

Global Health Fund 2021-2022 Impact Report



Image: Malaria Consortium US

Acknowledging your lifesaving support

We extend our deepest gratitude for your contributions to the RC Forward Global Health Fund. The Fund is advised by GiveWell, a charity evaluator that conducts rigorous research to identify charities that save the most lives per dollar.

Canadians donated over \$2 million to the Fund from 2021 to 2022. So far \$1.6 million of these gifts have been directed to global health projects carefully chosen for their strong evidence base and potential for high impact per dollar donated.

Based on GiveWell's research, we estimated these contributions have potentially **saved the lives of 222 people**. Thank you so much for your generosity!

– The [RC Forward](#) team

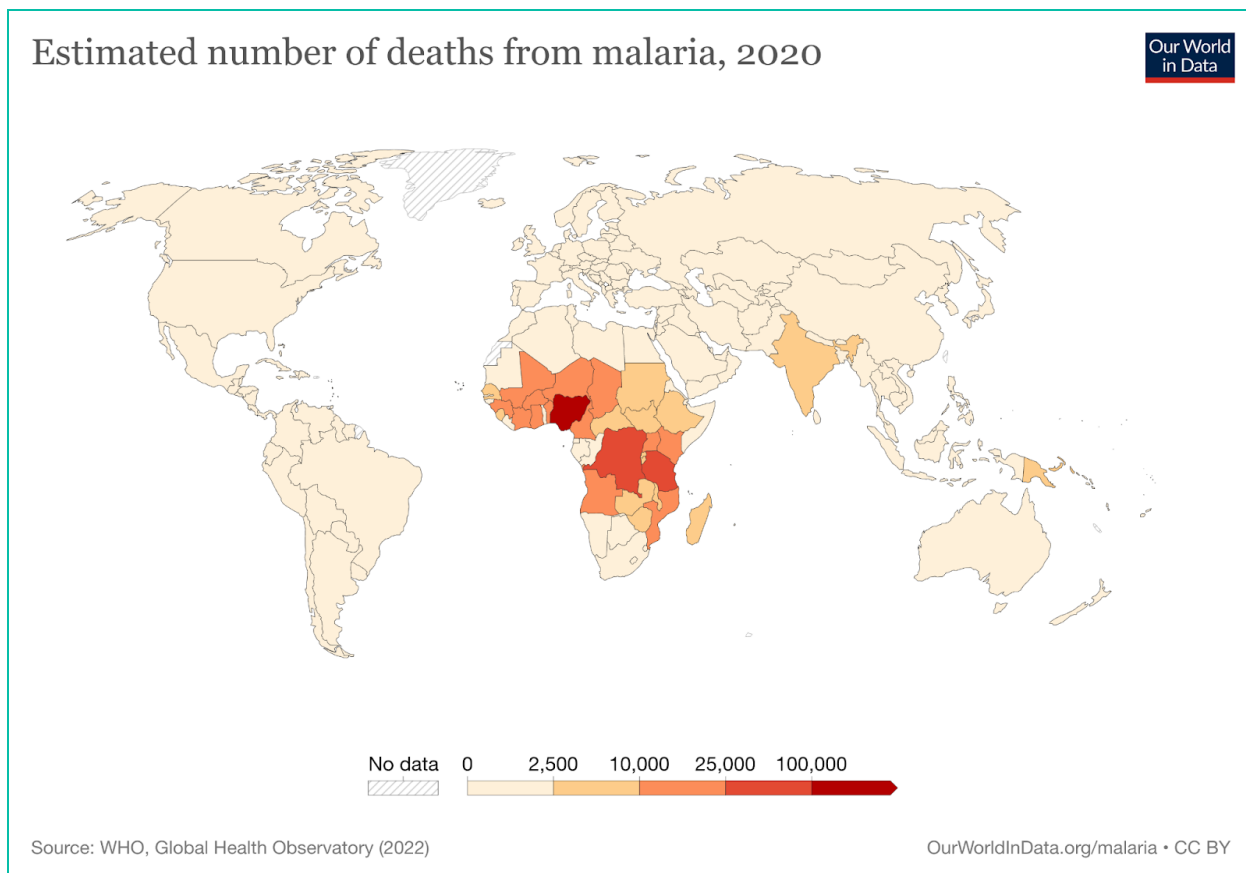
Fund goal

RC Forward Global Health Fund aims to maximize the impact of your donations through directing support to cost-effective, evidence-based projects to fight disease and improve health. Ultimately, we aim to help you meaningfully make a difference in the lives of some of the poorest people in the world.

The Fund is advised by [GiveWell](#), an expert charity evaluator that searches for the charities that save or improve lives the most per dollar.

Fund strategy 2021-2022

The Fund supported malaria-fighting projects in 2021-2022, and may support other health initiatives like vitamin supplements and vaccinations in future years. Malaria, killing an estimated 600,000 people annually—mainly young children in Sub-Saharan Africa—is preventable thanks to interventions including bed nets and medication. Your support of the Fund in 2021-2022 significantly aided work to eliminate malaria deaths



Estimated deaths from malaria globally in 2020. Source: [Our World In Data](#).

Gifts directed from the Fund, 2021-2022

The RC Forward Global Health Fund raised \$2,097,235 CAD in 2021-2022. After RC Forward's operational fees (4%) and third-party payment processing fees, \$1,998,832 was available to fund high-impact global health projects that improve or save lives. As of this report's publication in November 2023, \$1,600,404 of this funding (all donations raised January 2021–September 2022) has been directed to projects based on GiveWell's advice.

Recent changes to Fund operations

How the Fund had operated in the past—and over the period covered by this Impact Report—was by pooling donations and then allocating them quarterly to the most effective projects currently available among GiveWell's Top Charities. The below table shares gift and project details for 2021-2022 made possible by your support.

We [shared](#) in July 2023 that RC Forward is navigating changes to its grant process. These changes have significantly reduced the number of charities to which RC Forward is currently able to direct grant funding, which impacts how the Fund operates. Donations raised by the Fund October 2022 onwards will fund projects as soon as possible. Read more on Page 6 of this Impact Report.

Period	Raised	Fees	Gift size	Direction date	Purpose
2021-Q1	\$126,628	\$6,589	\$120,039	July 2021	Distribute nets to prevent malaria
2021-Q2	\$199,983	\$9,645	\$190,338	December 2021	Distribute nets to prevent malaria
2021-Q3	\$96,097	\$4,566	\$91,532	February 2022	Provide medicine to prevent malaria
2021-Q4	\$790,559	\$34,736	\$755,823	April 2022	Distribute nets to prevent malaria
2022-Q1	\$180,033	\$8,605	\$171,428	November 2022	Provide medicine to prevent malaria
2022-Q2	\$180,033	\$8,605	\$171,428	November 2022	Provide medicine to prevent malaria
2022-Q3	\$105,331	\$5,515	\$99,816	December 2022	Provide medicine to prevent malaria
2022-Q4	\$418,572	\$20,144	\$398,428	To be confirmed	To be confirmed
Totals	\$2,097,235	\$98,404	\$1,998,832		

Table: Global Health Fund gift and project details for 2021-2022. Note that 2022 Q1 and 2022 Q2 support was analyzed and reported together at one time, and these rows each represent ½ of the total support raised.

Project supported 2021-2022: Providing nets to fight malaria



Image: Against Malaria Foundation

Your gifts supported long-lasting insecticidal net (LLIN) distribution to help people protect themselves from malaria, which is transmitted by mosquitoes. [Against Malaria Foundation](#) (AMF) works to fund nets, ensure their use, and monitor their impact. This work is a highly effective intervention against malaria and is a [top-rated charity by GiveWell](#).

General information

- GiveWell estimates a cost of ~\$6.80 CAD (\$5 USD) for AMF to provide 1 net.
- In 2021 GiveWell estimated AMF's cost-effectiveness at roughly \$7,400 CAD (\$5,500 USD) per life saved.
- Nets generally protect more than 1 person, as family members can share nets.
- AMF estimates that providing nets improves the local economy by 12x the donation amount: "When people are ill they cannot farm, drive, teach – function, so the improvement in health leads to economic as well as humanitarian benefits."

Your impact with the RC Forward Global Health Fund, 2021-2022

- Funding provided: \$1,066,200 CAD
- Estimated nets provided: 156,794 nets
- Estimated lives saved: 144 people's lives

A note from Rob Mather, CEO of Against Malaria Foundation: *"This is amazing. We are so appreciative of the continued, wonderful generosity of so many people. It is so humbling how much, how frequently and how willingly people donate and show this fundamental interest in, and caring for, other people."*

Project supported 2021-2022: Medicine to prevent malaria



Image: Malaria Consortium

Your gifts supported seasonal malaria chemoprevention (SMC) to provide young children with medicine to prevent them from getting malaria. [Malaria Consortium's SMC program](#) provides preventative medicine to children in Sub-Saharan Africa during the high transmission season. This work is a highly effective intervention against malaria and is a [top-rated charity by GiveWell](#).

General information

- Malaria Consortium is a leading SMC implementer and has been scaling up rapidly. In 2022, it supported SMC delivery to almost 24 million children.
- GiveWell estimates a cost of ~\$9.50 CAD (\$7 USD) to protect 1 child.
- In 2022 GiveWell estimated cost-effectiveness of this program at roughly \$6,800 CAD (\$5,000 USD) per life saved.

Your impact with the RC Forward Global Health Fund, 2021-2022

- Funding provided: \$534,204 CAD
- Estimated children protected through SMC treatments: 56,232 children
- Estimated lives saved: 78 children's lives

A note from Malaria Consortium: *"We would like to extend our sincere gratitude for your generous donations. We are delighted to have your continued support. Through your generosity we have been able to continue to support multiple projects and research which are contributing to saving lives and reducing the burden of targeted diseases in Africa and Asia. You truly make the difference for us, and we are extremely grateful!"*

How the Fund works through RC Forward's operational changes

As we [shared in July 2023](#), we are currently making changes to our grant process. These changes have significantly reduced the number of charities to which we are currently able to direct grant funding.

Donations raised in the Fund October 2022 onwards have not yet funded projects, and will do so as soon as possible. We are collaborating with GiveWell to identify a cost-effective project among its Top Charities with immediate funding gaps that we are able to support within the constraints we are facing during our transition period. It's likely that funding a project may not occur in 2023, but if so it will be a top priority as soon as possible in 2024.

New donations

During this transition period, the Fund continues to accept new donations. Your gifts will support cost-effective global health projects as soon as possible. We will keep you updated via our [website](#) and newsletter.

Thank you for your generosity and for taking action to effectively help others!



Thank you for effectively helping others by supporting the RC Forward Global Health Fund!

To make a donation, visit rcforward.org/donate and select "RC Forward Global Health Fund."

Questions about your donation, the Fund, or this report? We are happy to help, contact our team at donations@rethinkprojects.org.

Image: Malaria Consortium