

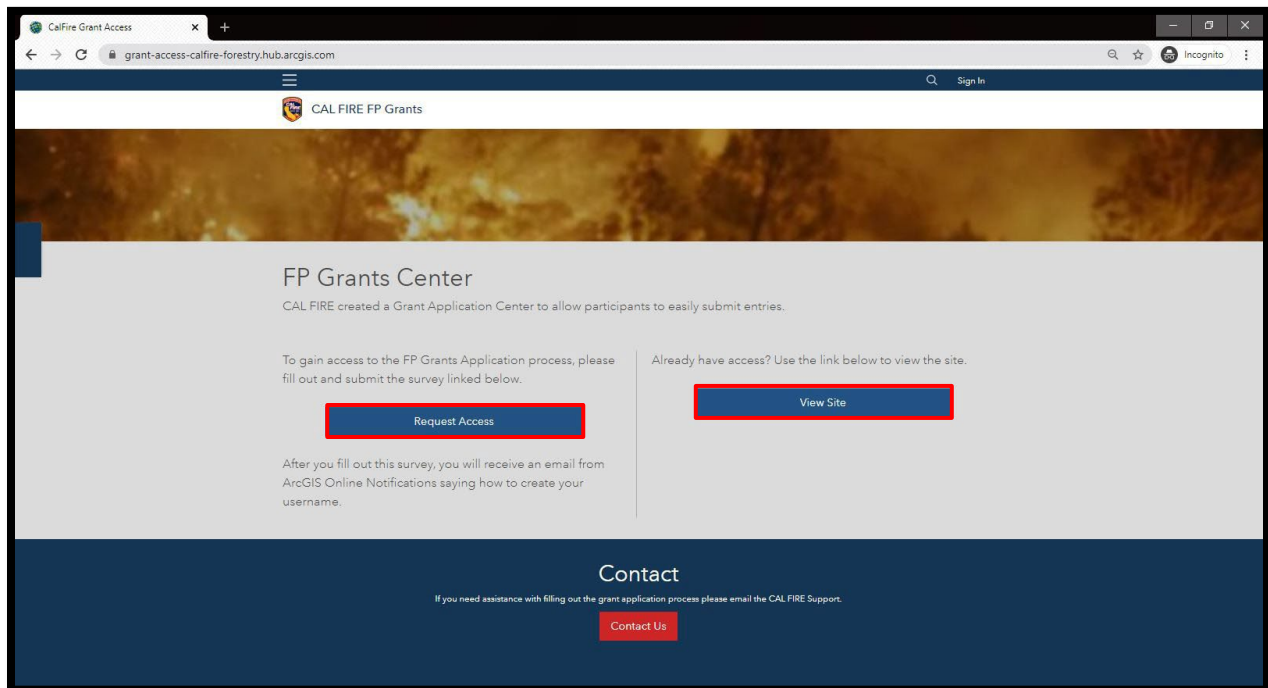
Wildfire Prevention Grants Project Mapping Program

Please email WPGrants@fire.ca.gov for questions.

Create the Geo Point and if applicable, the Treatment Influence Zone (TIZ) polygon(s) for your grant project. Hazardous Fuels Reduction grant applications are required to create both a Geo Point and TIZ polygons(s). Education and Planning projects need a Geo Point only. Applications without the required mapping elements will be disqualified from consideration.

How to Request Access or log-in

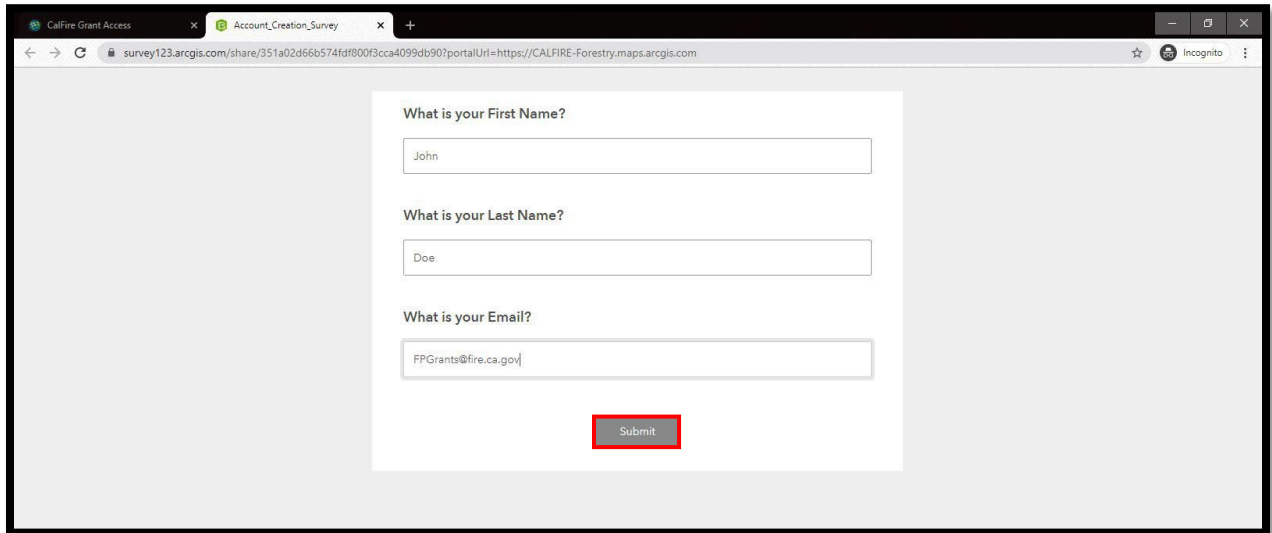
1. Click the link below to access the mapping website.



2. Select **Request Access** if you do not have a log-in. If you do have a log-in, select the **View Site** option.

Requesting Access

If you do not have a log-in, click on **Request Access**. Enter info and click submit.



CalFire Grant Access Account_Creation_Survey

survey123.arcgis.com/share/351a02d66b574fd800f3cca4099db907?portalUrl=https://CALFIRE-Forestry.maps.arcgis.com

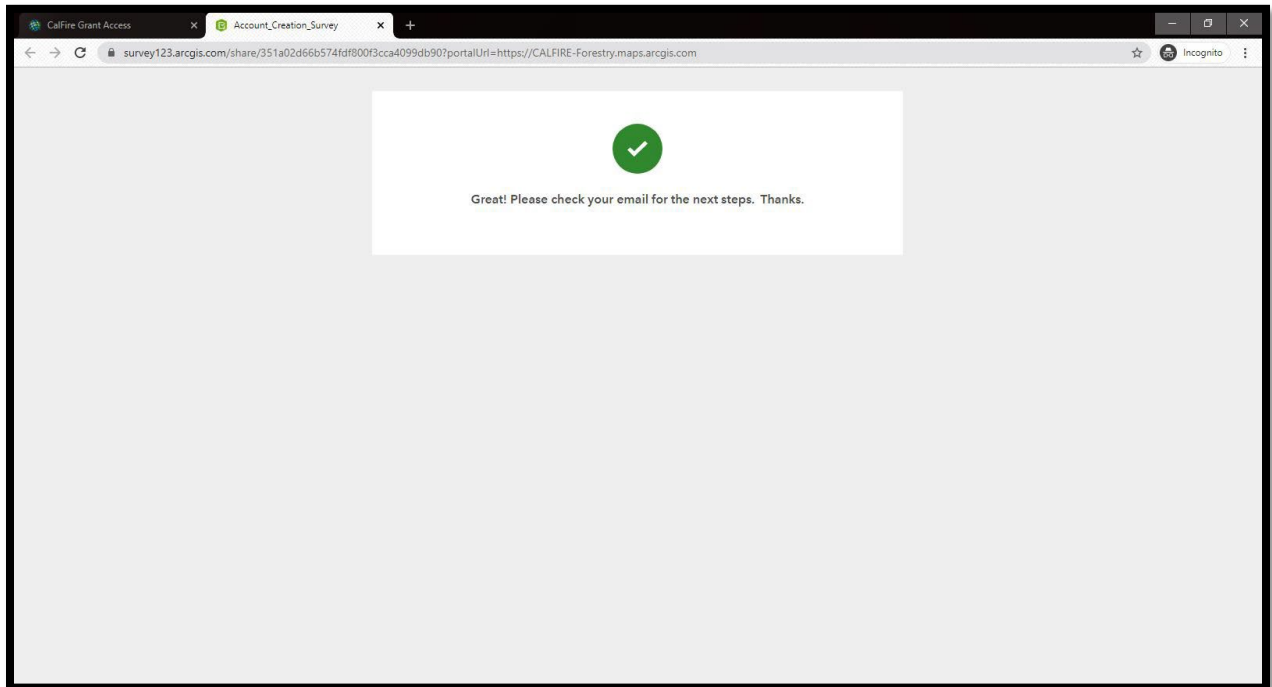
Incognito

What is your First Name?

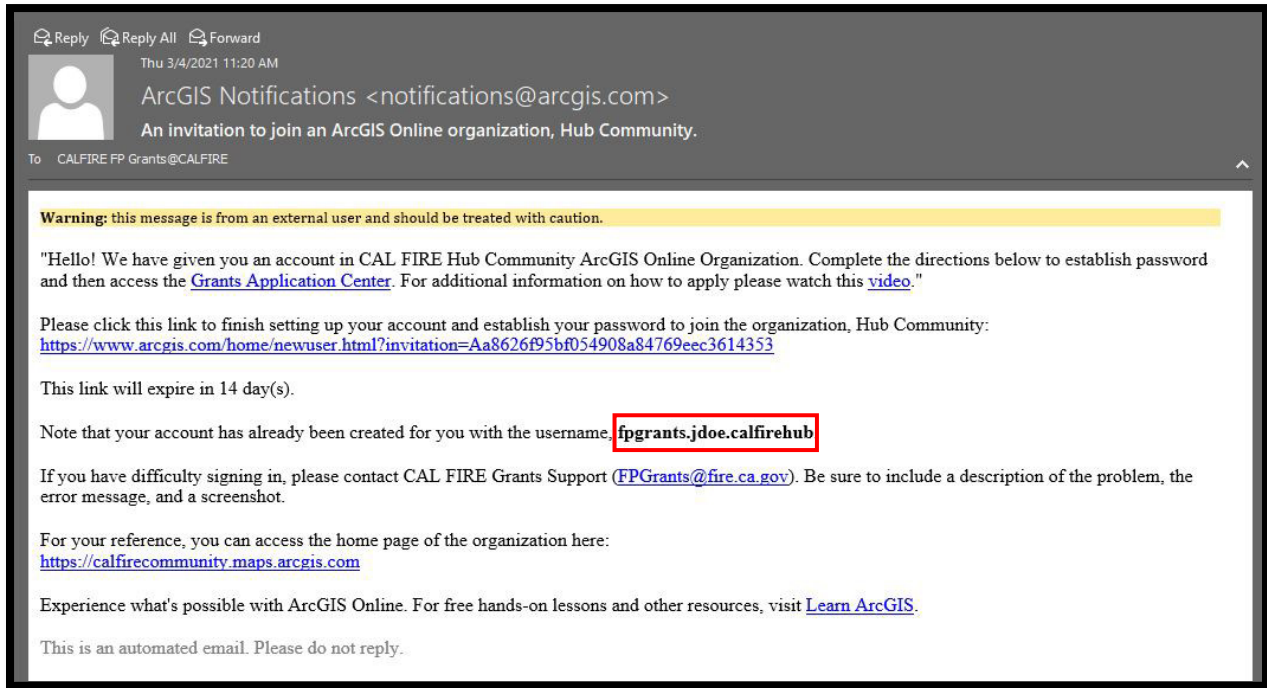
What is your Last Name?

What is your Email?

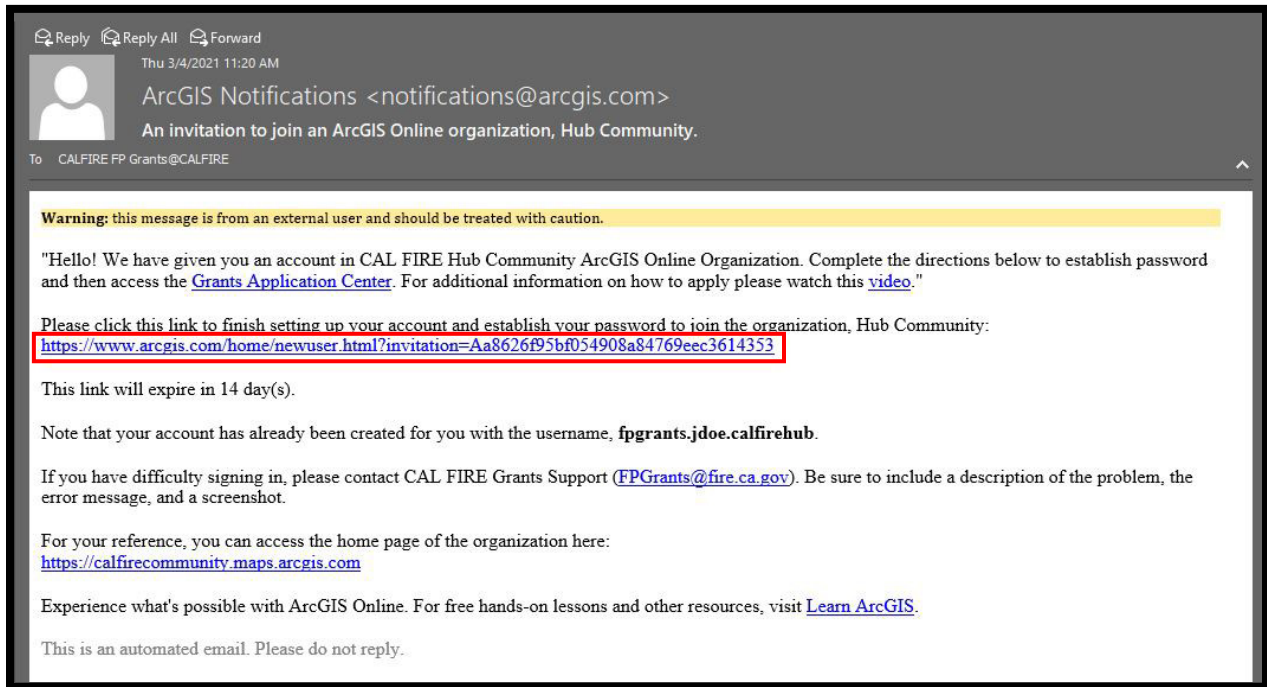
Submit



Please allow up to 1-2 business days for approval. Once the log-in request is approved, an email will be sent from ArcGIS Notifications to the email address entered when you **Requested Access**. Your username will be in bold text in the email.



To finish setting up your account and to create a password, click the link in your email.



Create your new password and click **Change Password**

Change your password

arcgis.com/sharing/oauth2/resetPassword?oauth_state=elHU_gnKu3UIA7F_ITT9W2UizMGZQaFCeII9Au0h_BbyF8wARGr9pbPGtOLeLyOqZ-t0BaLy9OJQdoYf-uAicYw8W7yAk3VRTsrfh-TNNW0sSjeFC85Th4VeNKh3la7X...

Set your password

New password

Password strength: **None**


The password must:

- Not match username.
- Be at least 8 characters long.
- Contain at least 1 letter(s) (A-Z, a-z).
- Contain at least 1 number(s) (0-9).

Confirm password

Change Password

Set your security question and answer, click **OK** to save

Security Question and Answer 

A security question has not been set for your account. Setting a security question and answer allows you to reset your password if needed. Choose a question from the drop down menu below and enter your answer in the input box provided.

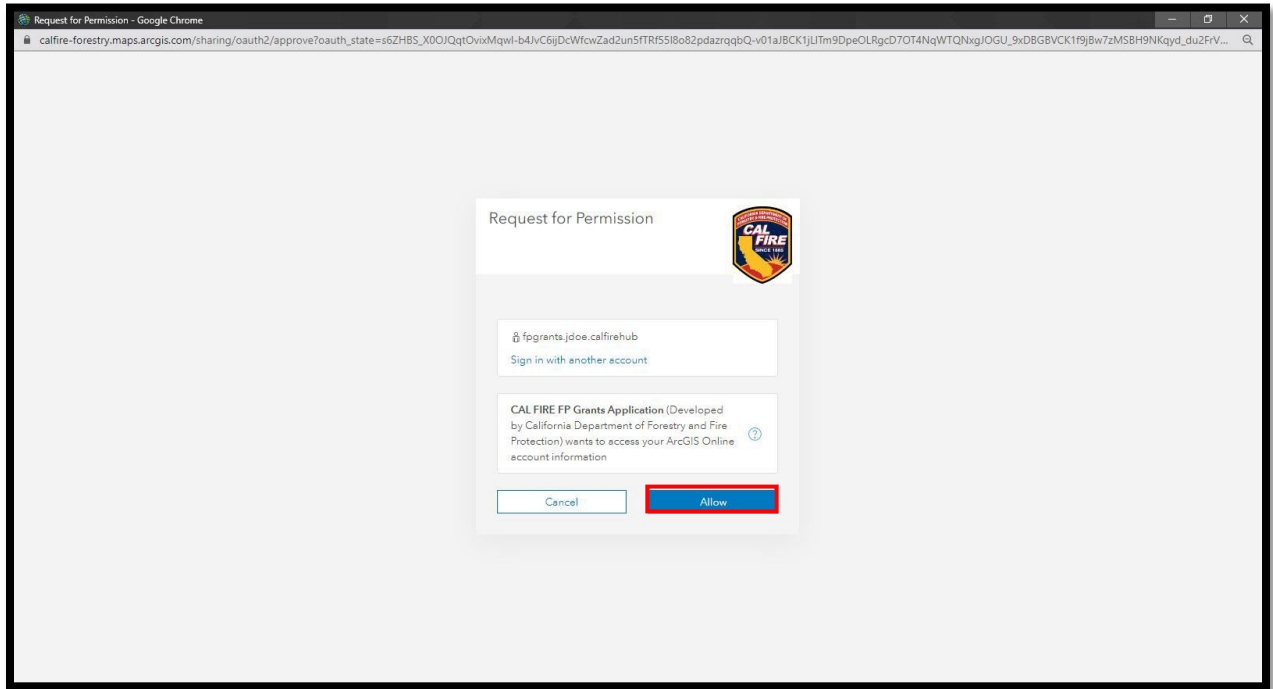
Security Question:

Select one

Answer:

OK

The site will direct you to login to access the Cal Fire Wildfire Prevention Grants Project Mapping Hub website

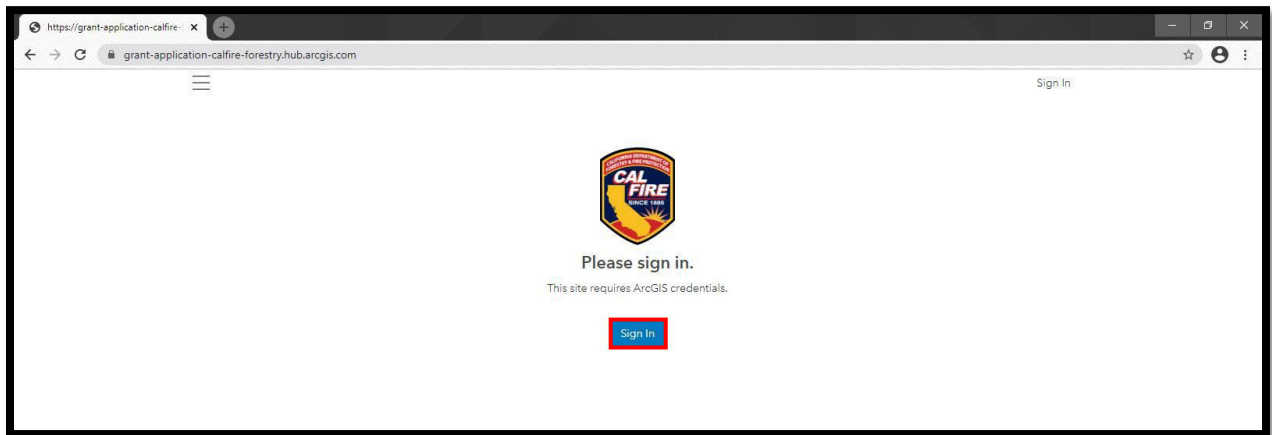


CAL FIRE Wildfire Prevention Grants Project Mapping Hub

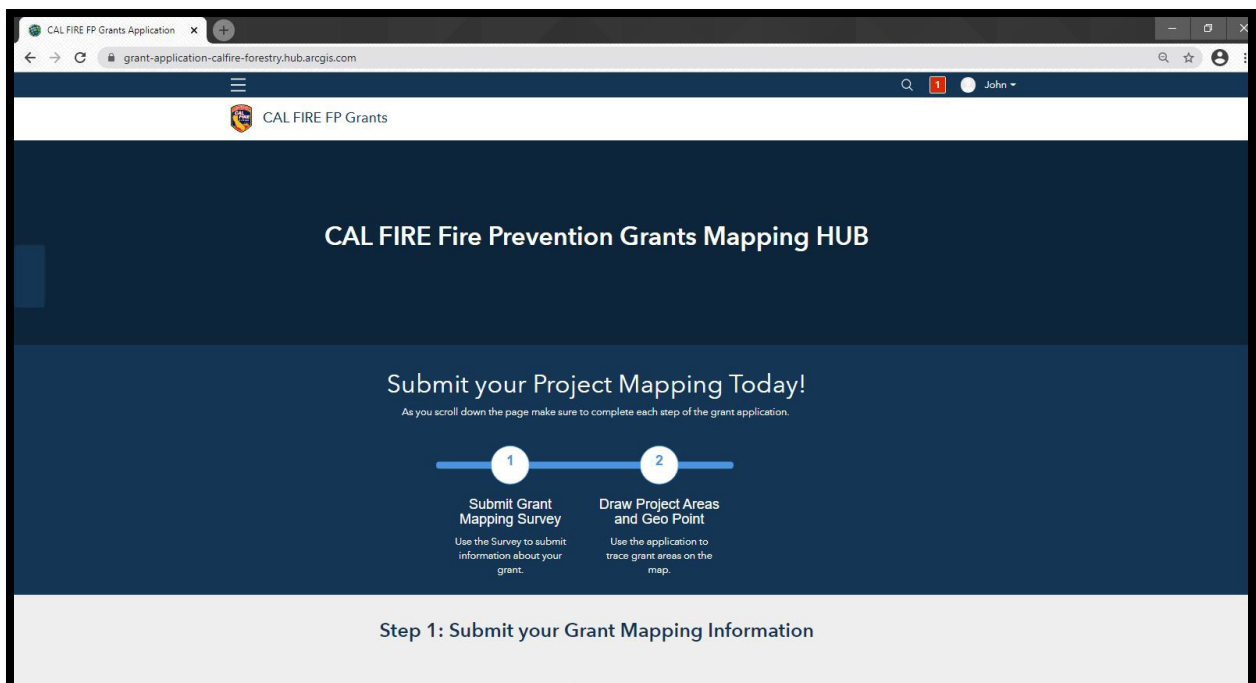
3. To begin the mapping portion of the grant application, click on the **View Site** option or follow the link below

<https://grant-application-calfire-forestry.hub.arcgis.com/>

4. Next, sign in using your new **calfirehub** account username and password



5. After signing in, you will be required to complete the application project mapping process



6. Scroll down the page to complete **Step 1: Submit your Grant Mapping Information**

- **Project Tracking Number *as assigned* in your Grants Portal grant application. The Project Tracking Number will be *auto-generated* in Grants Portal and will have the following format: 22-WP-(Unit Acronym) -(8-digit number)**
- **Project Type**
- **Project Description**
- **Contact Info for project primary contact**

The screenshot shows a web browser window with the URL `grant-application-calfire-forestry.hub.arcgis.com`. The page title is "CAL FIRE FP Grants" and the main heading is "Step 1: Submit your Grant Mapping Information". The form is titled "CAL FIRE Grant Application" and contains the following fields:

- What is your Project Tracking Number?*** (e.g. 20-FP-XXX-1234): A text input field containing "20 FP AEU 1234".
- Project Type:***: A dropdown menu with "Fuel Reduction" selected.
- Please provide a description of your project.*** (Please write a short description of the project. No more than 2000 characters.): A text area containing "This is a test."

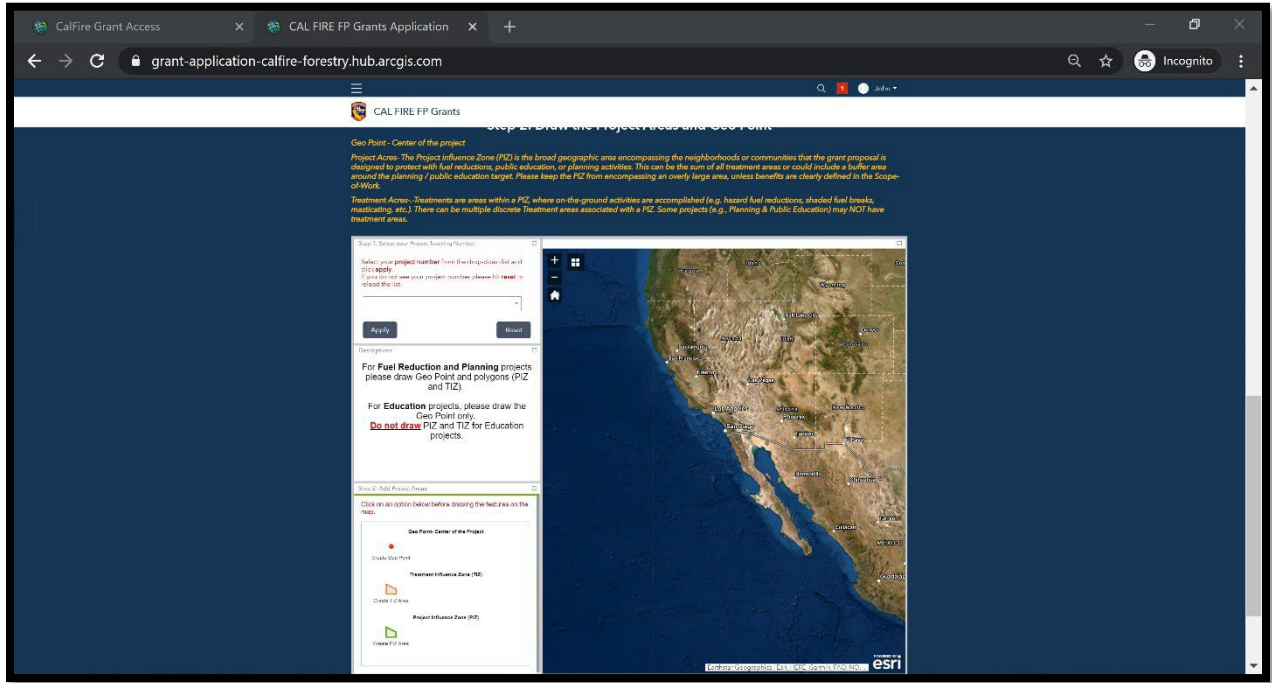
7. After completing the Grant Mapping Information, click **Submit** and continue scrolling down to complete the online mapping portion of the application.

The screenshot shows the same web browser window, but the form has scrolled down to the contact information section. The form is titled "CAL FIRE Grant Application" and contains the following fields:

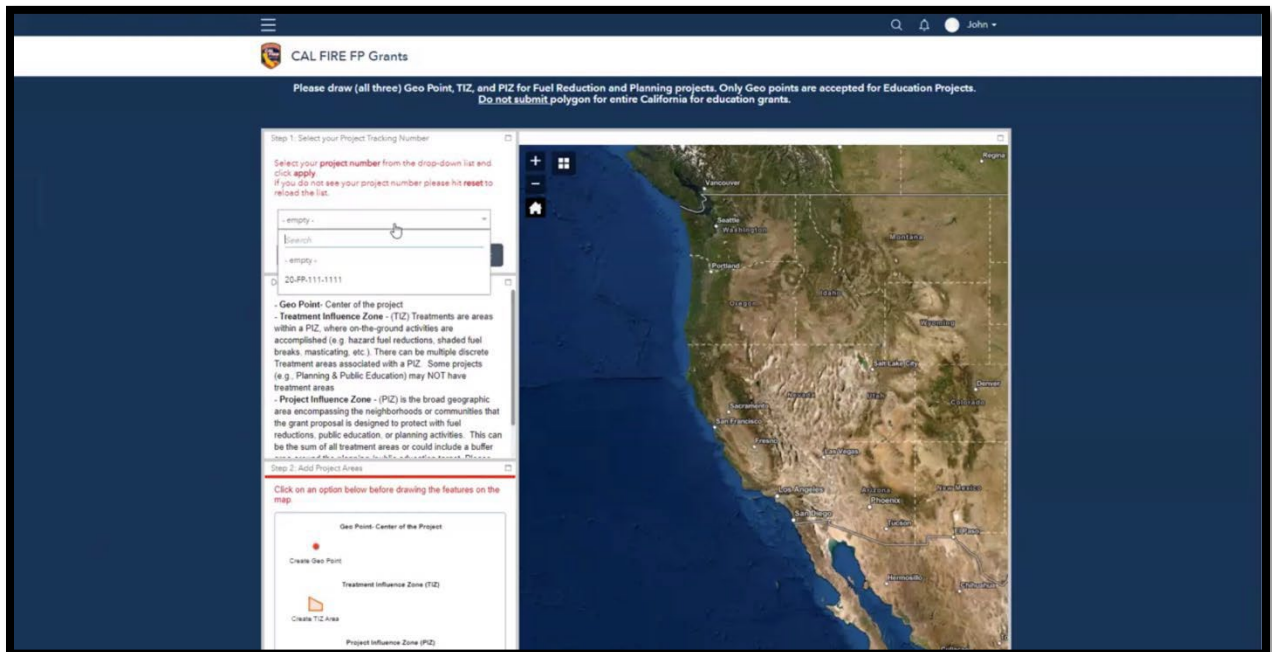
- What is your phone number?*** (xxx-xxx-xxxx): A text input field containing "955-555-5555".
- What is your email address?***: A text input field containing "fpgrants@fire.ca.gov".

Below the form, there is a red "Submit" button and a message: "After you click 'Submit' below, please continue to step 2 to create the Geo Point and polygon(s) for your grant project. Grant applications without Geo points and polygons will not be accepted. Thank you!"

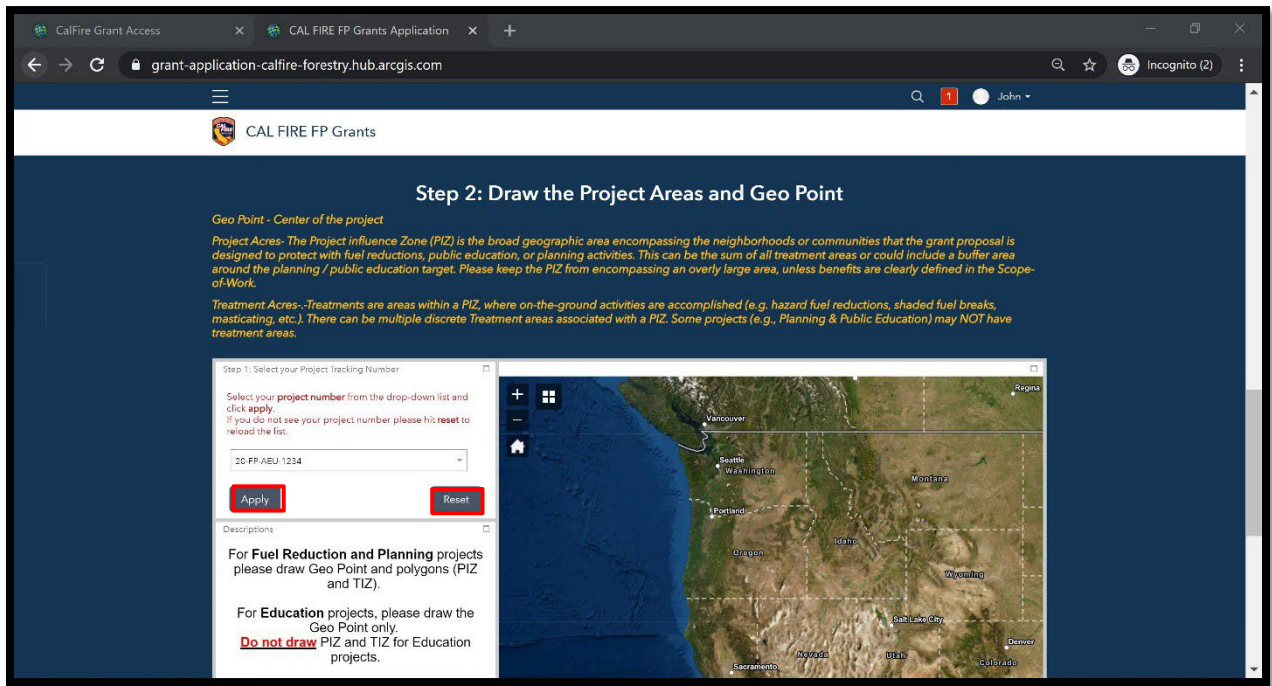
8. In the second part of the application process, you will be asked to draw the **Geo Point** and if a Hazardous Fuels Reduction project, the **Treatment Influence Zone (TIZ)** for your project **Planning and Education Projects will only require a Geo Point.**



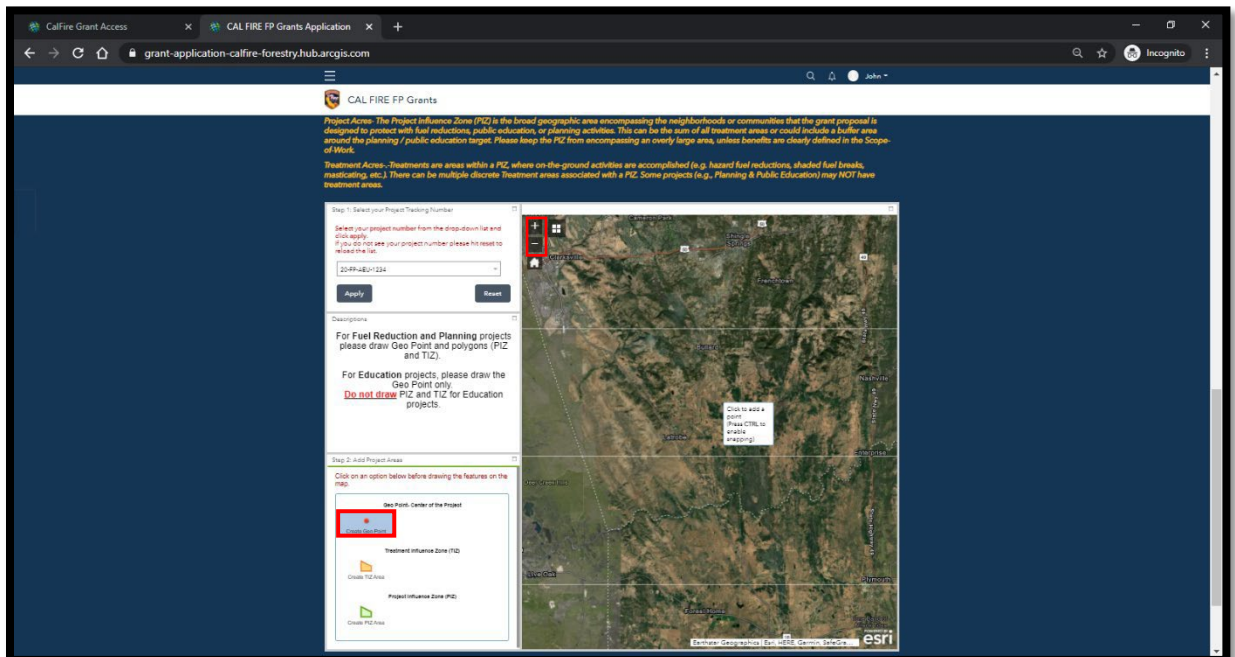
9. Using the drop-down menu, select your **project number** and select **Apply**



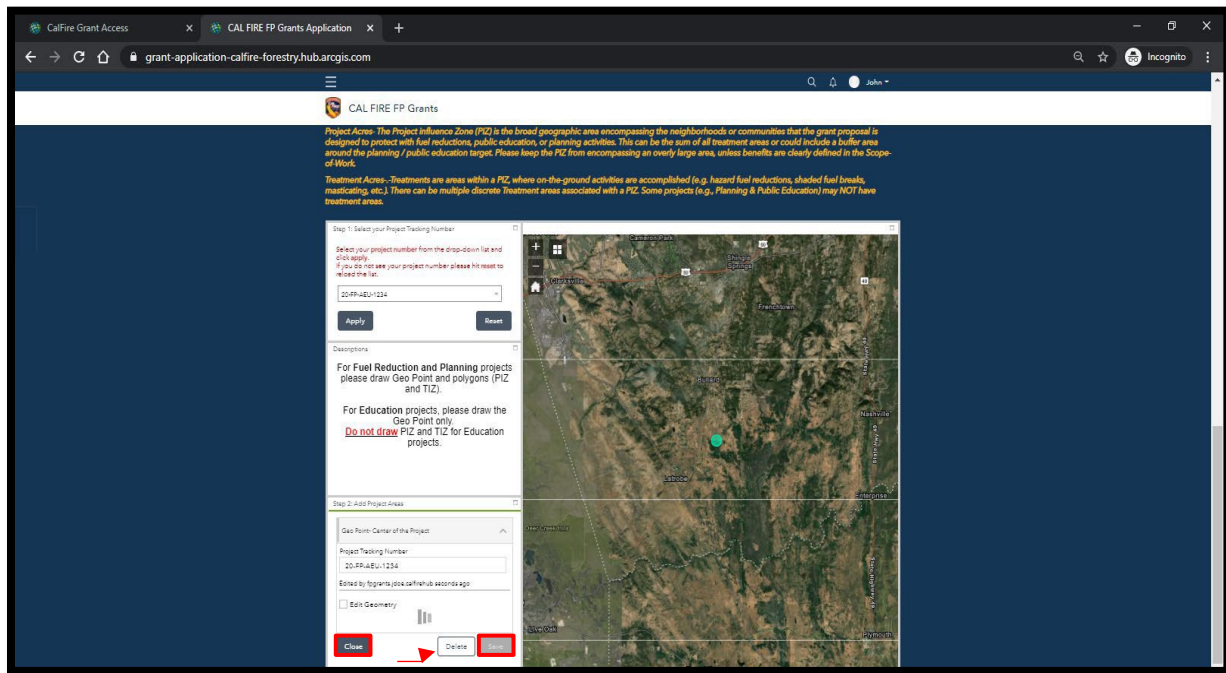
Note: If your project number does not display as an option in the drop down, click the **Reset** button, and reopen the drop-down menu to select the project number. Click **Apply** to save.



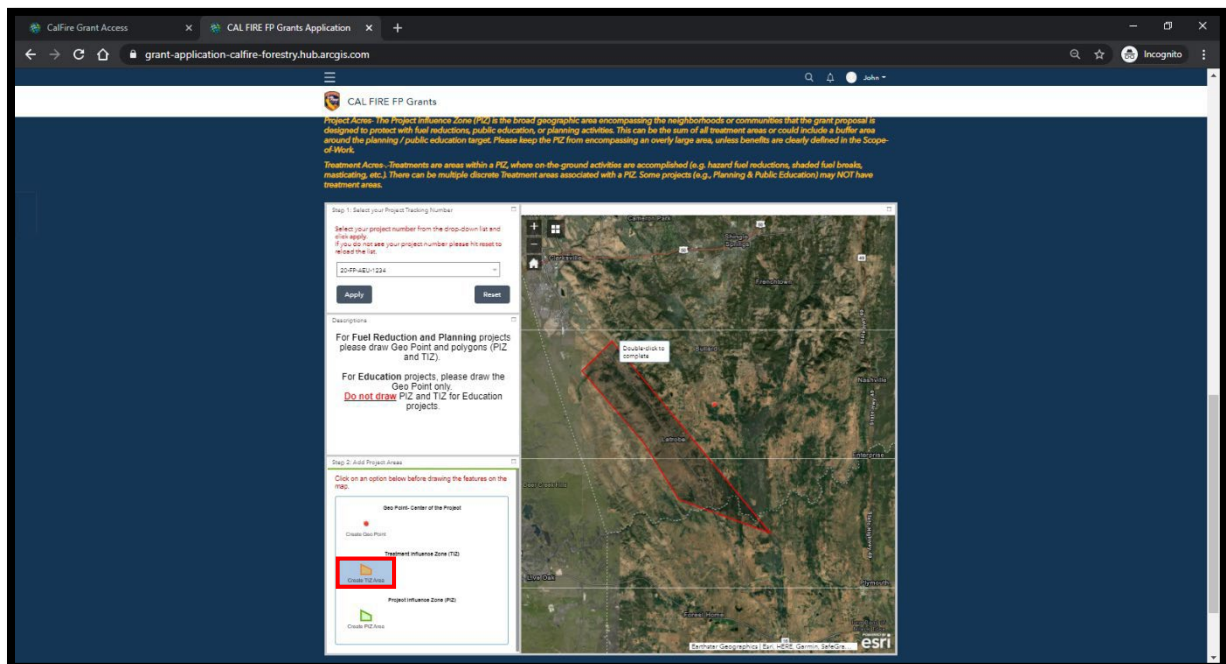
10. To draw a **Geo Point**, select the **Create Geo Point** tool from the features option. Once selected, the tool will turn **blue** indicating that the tool is selected. To zoom into your areas of interest using the scroll wheel on your mouse or the plus (+) and minus (-) buttons on the top. Once you have selected the **Create Geo Point** tool, move the cursor on the map and click on the location where you want the Geo Point to be placed



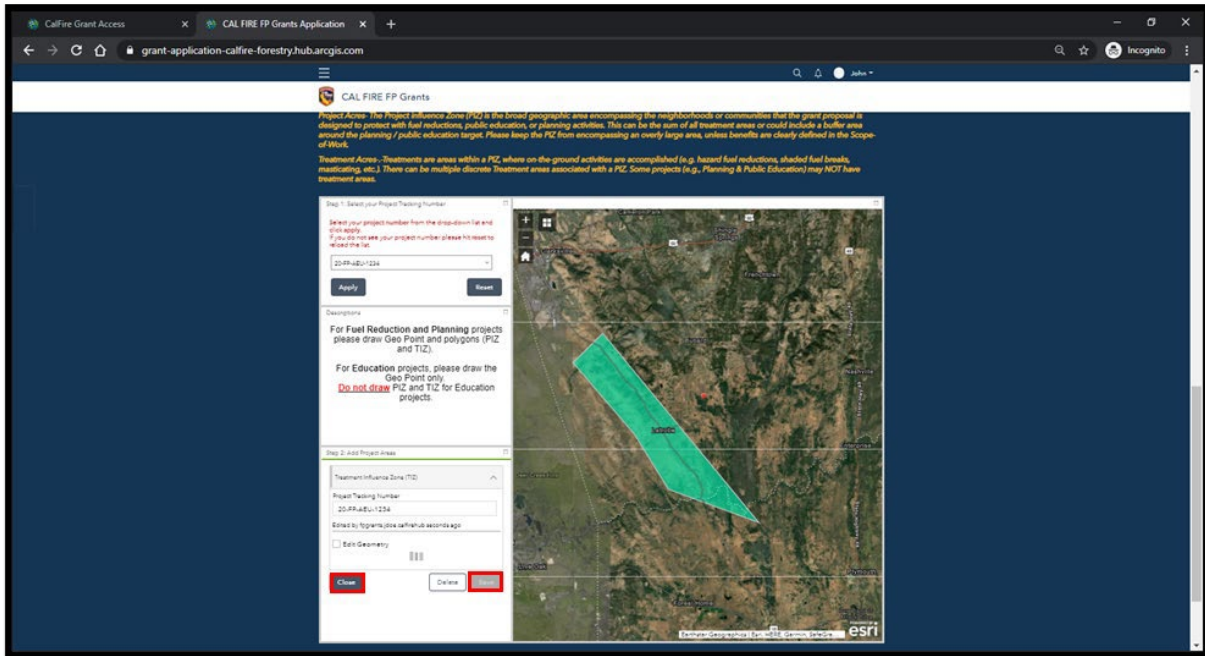
After you have drawn the Geo Point, click **Save** and **Close**. To delete an attempt, click **Delete**. If a **Hazardous Fuels Reduction** project go to **Step 11**, if a **planning and Education Project** please skip to **Step 12**.



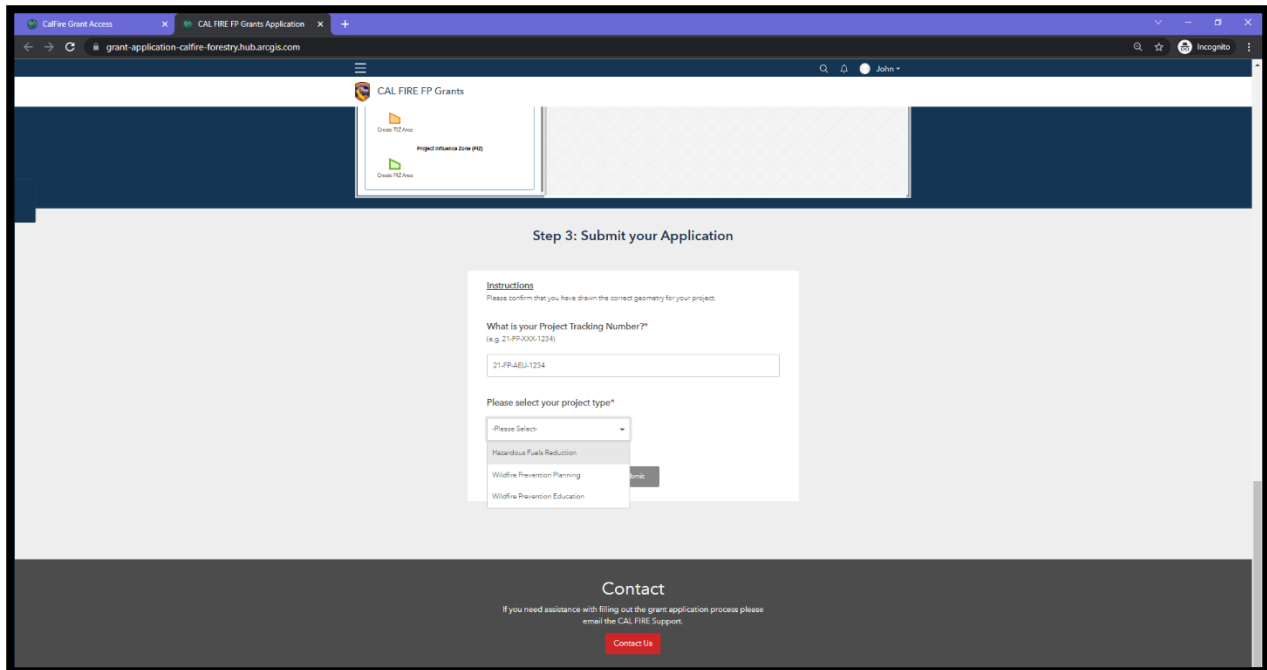
11. To draw the Treatment Influence Zone(s) (TIZ), click the **Create TIZ Area** tool so that it is selected. Move the cursor to the area of interest on the map and begin to draw the perimeter of the treatment area(s). Remember to click on the map to draw the perimeter. When you are finished, double-click to close the boundary



After you have drawn the Treatment Influence Zone(s), click **Save** and then **Close**



12. In the third part of the application process, you will be asked to confirm drawing the required geometry for your selected project type. Enter your project tracking number and select your project type from the drop-down menu



Once you have selected your project type from the drop-down menu, confirm that you have drawn the required geometry for your project. Select from the Yes/No options. Remember, you must draw a **Geo Point** and **Treatment Influence Zone(s) (TIZ)** for your Hazardous Fuels Reduction project. **Wildfire Prevention Planning and Education Projects will require a Geo Point only.**

Note: An application will be automatically rejected if an applicant fails to each draw required geometry for their project.

How to logout

Once you have successfully completed the Wildfire Prevention Grants Mapping application, click on the username on the top tool bar and select **Sign Out**.

