



# EMS Personnel Mutual Aid Compendium

Emergency Medical Services Authority  
California Health and Human Services Agency

EMSA # 301  
4<sup>th</sup> Revision June 2018







**HOWARD BACKER, MD, MPH, FACEP  
DIRECTOR**

**DANIEL R. SMILEY  
CHIEF DEPUTY DIRECTOR**

**SEAN TRASK  
DIVISION CHIEF**

EMSA # 301  
4<sup>th</sup> Revision June 2018  
3<sup>rd</sup> Revision October 2017  
2<sup>nd</sup> Revision June 2013  
Released December 2011



# Contents

Introduction .....	3
Purpose .....	3
Legal Authority.....	3
Definition of Mutual Aid.....	3
Auto/Instant Aid.....	3
Mutual Aid .....	3
Disaster Assistance.....	3
Scope of Practice During Mutual Aid.....	4
California EMS Personnel.....	4
Paramedic.....	4
AEMT .....	4
EMT .....	4
Out-of-State EMS Personnel .....	4
Paramedic.....	5
AEMT .....	5
EMT .....	5
Federal EMS Personnel.....	5
Paramedic.....	6
AEMT .....	6
EMT .....	6
Tribal EMS Personnel.....	6
Paramedic.....	7
AEMT .....	7
EMT .....	7
Appendix A: Decision Trees for License/Certification Recognition.....	8
EMT Recognition for California Mutual Aid.....	9
AEMT Recognition for California Mutual Aid.....	10
Paramedic Recognition for California Mutual Aid .....	11
Appendix B: Referenced California Code and Regulations.....	12
Health & Safety Code .....	13
California Code of Regulations .....	13

Appendix C: Sample Request for Temporary Recognition of Out-of-State EMS  
Personnel Form..... 16

Appendix D: LEMSA Information..... 18

    LOCAL EMS AGENCY REGIONAL MAP ..... 19

    LOCAL EMS AGENCY LISTING ..... 20

# Introduction

## PURPOSE

To clarify the existing laws and regulations pertaining to when and under what conditions a Paramedic, AEMT or EMT, whether licensed/certified inside or outside California, may legally function in their respective EMS classification during transport, mutual aid and disasters in California.

## LEGAL AUTHORITY

Health & Safety Code, Section 1797.170(b)

California Code of Regulations, Title 22, Division 9:

- Chapter 2 (EMT), §100061, §100062(c), §100064(a) (c) and (i)
- Chapter 3 (AEMT), §100126(a)
- Chapter 4 (Paramedic), §100142, §100145(c), §100146(b), §100166(a) and (l)

## DEFINITION OF MUTUAL AID

In general, mutual aid is the concept of resource sharing in which similar organizations assist each other during emergencies and day-to-day operations. For the purposes of this document, mutual aid will encompass the following:

### Auto/Instant Aid

Agreements between two or more jurisdictions where the nearest available resource is dispatched to an emergency irrespective of jurisdictional boundaries or where two or more agencies are automatically dispatched simultaneously to predetermined types of emergencies. This type of mutual aid agreement is typically utilized on a day-to-day basis.

### Mutual Aid

Agreements between two or more jurisdictions to provide assistance across jurisdictional boundaries, when requested, as a result of the circumstances of an emergency exceeding local resources.

### Disaster Assistance

Similar to mutual aid but are requests for assistance in the event that a disaster overwhelms local resources. These requests may be under existing mutual aid agreements or the result of unforeseen needs arising from a particularly large-scale disaster.

## Scope of Practice During Mutual Aid

### CALIFORNIA EMS PERSONNEL

The rules for California licensed/certified EMS personnel are the same regardless of whether for daily response and transport needs (includes auto/instant aid, mutual aid, inter-facility transport and aero-medical transport) or in response to a declared disaster or major wildfire. The following are the rules for California EMS personnel responding outside their jurisdiction.

#### Paramedic

California Paramedics may utilize their approved scope of practice anywhere in California during a mutual aid call provided all of the following conditions are met:

- a. They are in possession of a valid California Paramedic License
- b. They are accredited by a local EMS agency
- c. They are affiliated with an ALS provider that is approved by the local EMS agency with whom they are accredited
- d. They utilize the scope of practice for which s/he is trained and accredited according to the policies and procedures established by his/her accrediting local EMS agency, which shall include an “Out-Of-County Response” Policy.

#### AEMT

California AEMTs may utilize their approved scope of practice anywhere in California during mutual aid call provided all of the following conditions are met:

- a. They are in possession of a valid California AEMT Certificate
- b. They are accredited by a local EMS agency
- c. They are affiliated with an LALS or ALS provider that is approved by the local EMS agency with whom they are accredited
- d. They utilize the scope of practice as defined by the policies and procedures established by the local EMS agency with whom they are accredited

#### EMT

A California certified EMT is recognized as an EMT statewide regardless of where in California they are certified. EMTs may utilize optional scope of practice skills as long as they follow the policies and procedures established by the local EMS agency with whom they are accredited to for those skills. EMTs may utilize their EMT Scope of Practice in a volunteer capacity and for any provider. There is no requirement for an EMT to be affiliated with a provider.

### OUT-OF-STATE EMS PERSONNEL

The rules for out-of-state licensed/certified EMS personnel are the same regardless of whether for daily response and transport needs (includes auto/instant aid, mutual aid, inter-facility transport and aero-medical transport) or in response to a declared disaster



or major wildfire. The following are the rules for out-of-state EMS personnel (excluding federally or tribal licensed/certified personnel) responding/operating in California.

### **Paramedic**

An out-of-state Paramedic may temporarily practice in California provided all of the following conditions are met:

- a. They are in possession of a valid Paramedic license/certificate issued by another state or country
- b. They are approved by the medical director of the local EMS agency to practice in jurisdiction of the local EMS system
- c. They may utilize the scope of practice as defined by the jurisdiction with whom they are licensed/certified
- d. They will observe any limits placed on their scope of practice by the local medical director, should the local medical director exercise that option

There is no requirement for an out-of-state Paramedic to be affiliated with an approved ALS provider.

### **AEMT**

There is no provision in either California Statute or Regulations for non-California AEMTs to temporarily practice in California.

### **EMT**

An out-of-state EMT may temporarily practice in California provided all of the following conditions are met:

- a. They are either a Nationally Registered EMT (NREMT) OR are in possession of a valid EMT license/certificate issued by one of the following agencies of the federal government:
  - 1) Any branch of the Armed Forces (including the US Coast Guard)
  - 2) The National Park Service
  - 3) The Bureau of Land Management
  - 4) The US Forest Service
- b. They are approved by the medical director of the local EMS agency to practice in jurisdiction of the local EMS system
- c. They may utilize the scope of practice as defined by the jurisdiction with whom they are licensed/certified
- d. They will observe any limits placed on their scope of practice by the local medical director, should the local medical director exercise that option

## **FEDERAL EMS PERSONNEL**

The rules for federally licensed/certified EMS personnel are the same regardless of whether for daily response and transport needs (includes auto/instant aid, mutual aid, inter-facility transport and aero-medical transport) or in response to a declared disaster or major wildfire. The following are the rules for federally licensed/certified EMS

personnel responding/operating on non-federal land in California or on federal lands that are part of the local EMS system. Federal EMS personnel responding on federal lands that are not part of the local EMS system do not need to notify the local medical director.

### **Paramedic**

A Paramedic who is licensed/certified by a federal entity or who is under the jurisdiction of the federal government may temporarily practice in California provided all of the following conditions are met:

- a. They are in possession of a valid Paramedic license/certificate issued by the either federal government or another state or country
- b. They are approved by the medical director of the local EMS agency to practice in jurisdiction of the local EMS system
- c. They may utilize the scope of practice as defined by the jurisdiction with whom they are licensed/certified
- d. They will observe any limits placed on their scope of practice by the local medical director, should the local medical director exercise that option

### **AEMT**

There is no provision in either California Statute or Regulations for non-California EMT-IIs to temporarily practice in California.

### **EMT**

An out-of-state EMT may temporarily practice in California provided all of the following conditions are met:

- a. They are either a Nationally Registered EMT (NREMT) OR are in possession of a valid EMT license/certificate issued by one of the following agencies of the federal government:
  - 1) Any branch of the Armed Forces (including the US Coast Guard)
  - 2) The National Park Service
  - 3) The Bureau of Land Management
  - 4) The US Forest Service
- b. They are approved by the medical director of the local EMS agency to practice in jurisdiction of the local EMS system
- c. They may utilize the scope of practice as defined by the jurisdiction with whom they are licensed/certified
- d. They will observe any limits placed on their scope of practice by the local medical director, should the local medical director exercise that option

## **TRIBAL EMS PERSONNEL**

This section applies only to tribal EMS personnel when the tribe is NOT part of the local EMS system and who issue their own tribal EMS licenses and certifications. EMS personnel from tribes that do not issue their licenses/certifications would fall into one of

the above categories based on where they are licensed/certified. The rules for Tribally licensed/certified EMS personnel are the same regardless of whether for daily response and transport needs (includes auto/instant aid, mutual aid, inter-facility transport and aero-medical transport) or in response to a declared disaster or major wildfire. The following are the rules for tribal EMS personnel responding/operating in California outside their tribal lands.

### **Paramedic**

A tribally licensed/certified Paramedic may temporarily practice in California provided all of the following conditions are met:

- a. They are in possession of a valid Paramedic license/certificate issued by the either federal government or another state or country
- b. They are approved by the medical director of the local EMS agency to practice in jurisdiction of the local EMS system
- c. They may utilize the scope of practice as defined by the jurisdiction with whom they are licensed/certified
- d. They will observe any limits placed on their scope of practice by the local medical director, should the local medical director exercise that option

### **AEMT**

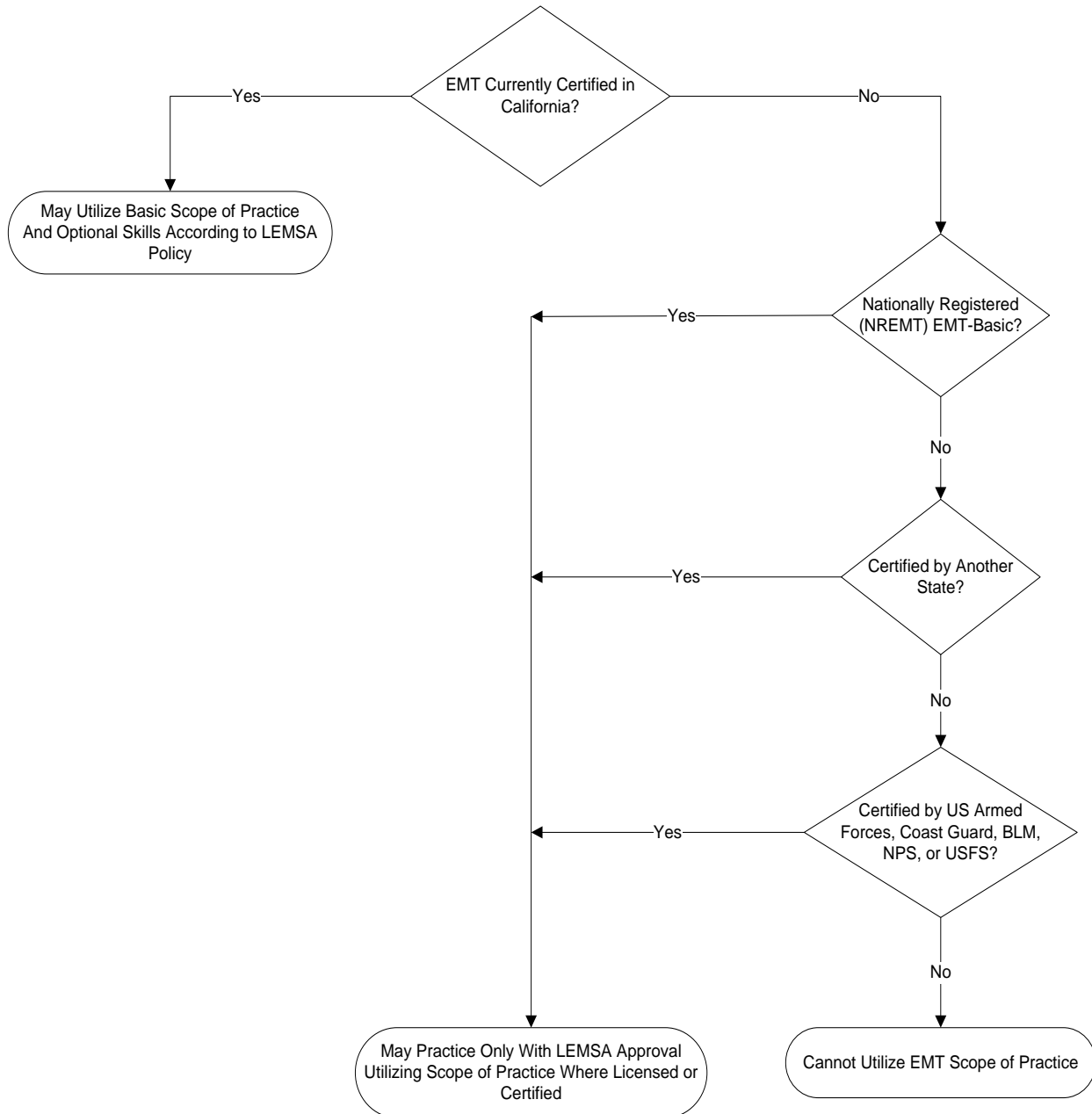
There is no provision in either California Statute or Regulations for non-California EMT-IIs to temporarily practice in California.

### **EMT**

When approved by the medical director of the local EMS agency a tribally licensed/certified EMT may temporarily utilize the Scope of Practice for which they have been trained only if they are also a Nationally Registered EMT (NREMT).

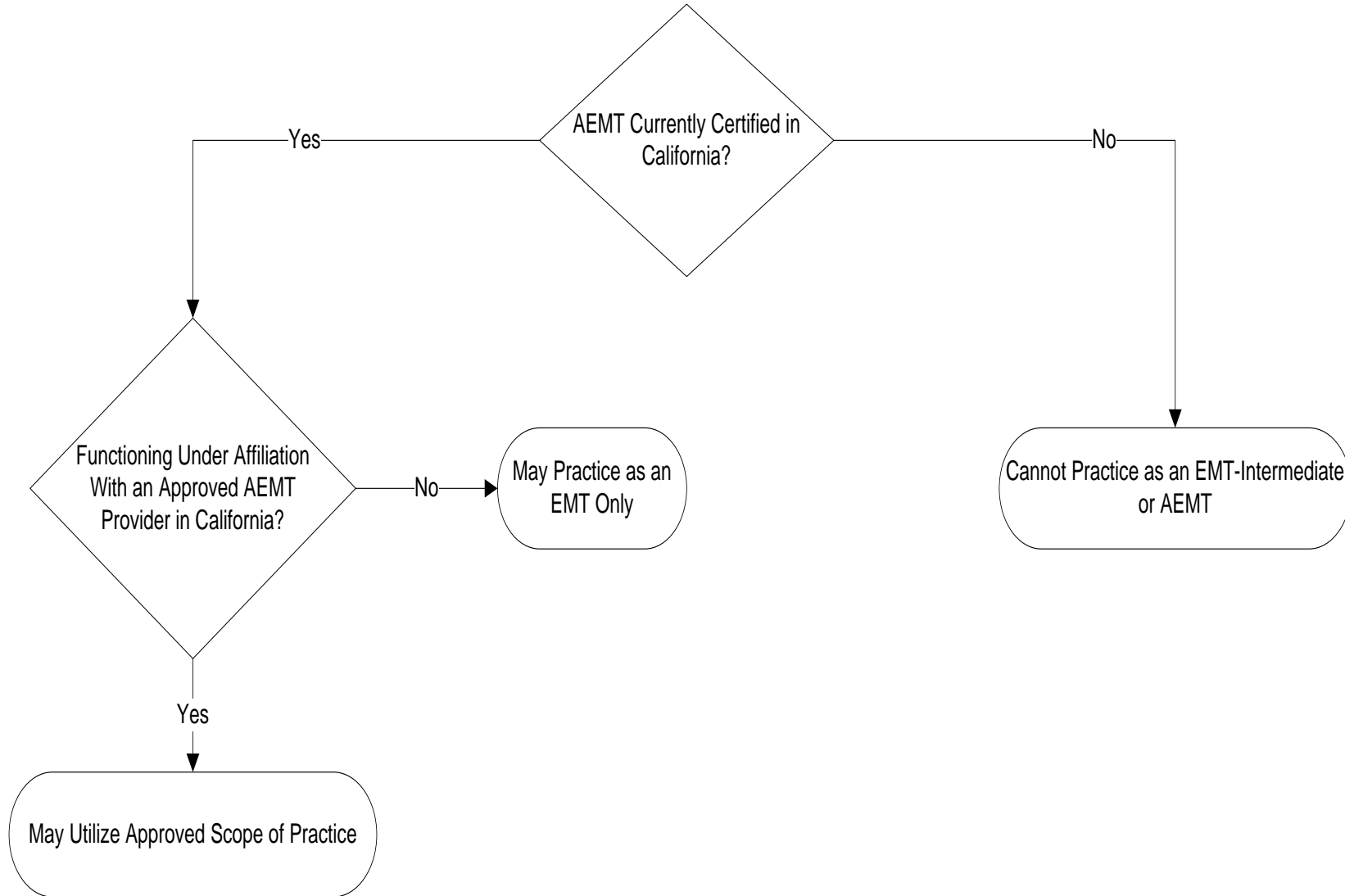
## **Appendix A: Decision Trees for License/Certification Recognition**

# EMT RECOGNITION FOR CALIFORNIA MUTUAL AID

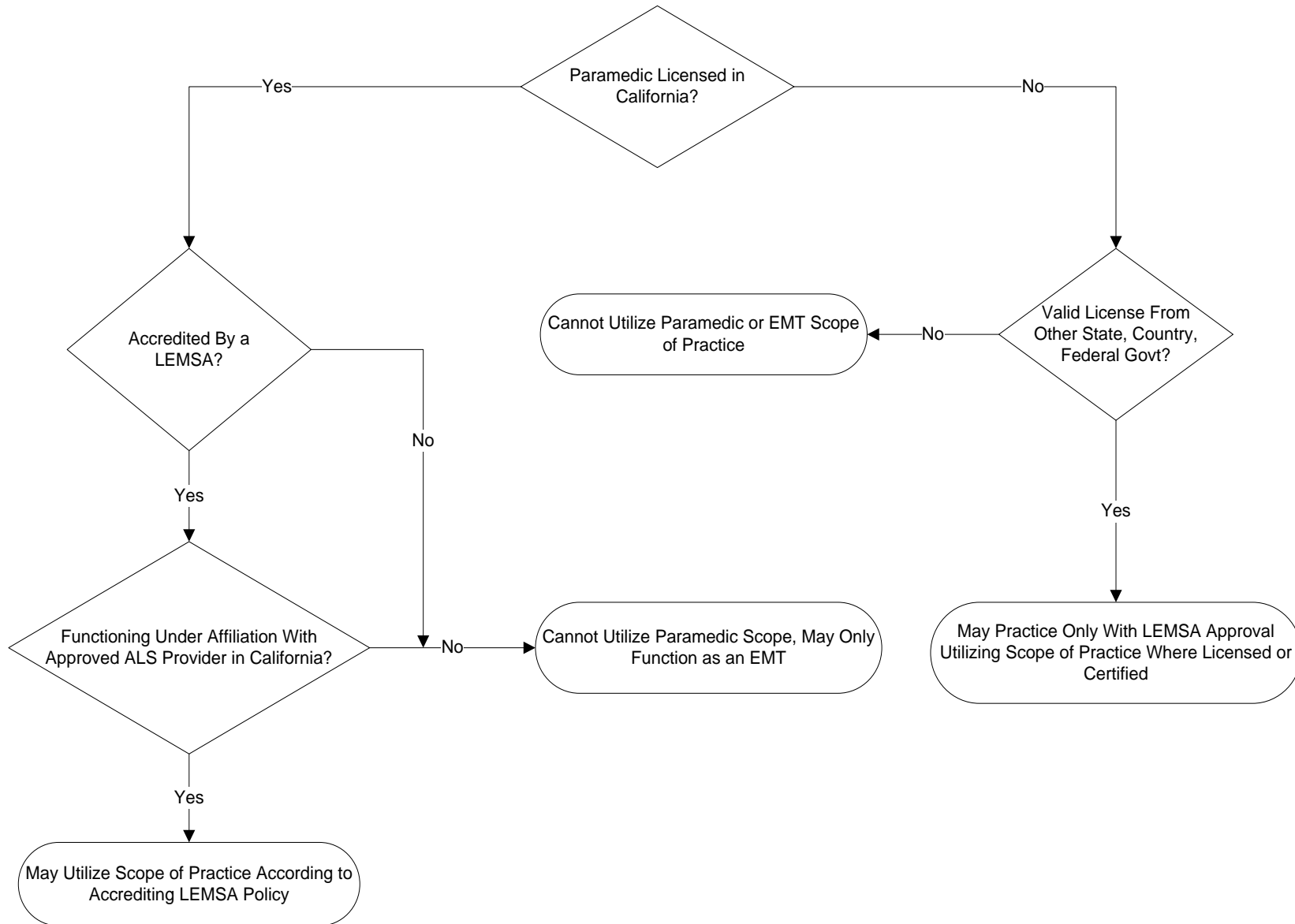


Legend  
BLM – Bureau of Land Management  
NPS – National Parks Service  
USFS – US Forest Service

## AEMT RECOGNITION FOR CALIFORNIA MUTUAL AID



# PARAMEDIC RECOGNITION FOR CALIFORNIA MUTUAL AID



## **Appendix B: Referenced California Code and Regulations**



## Health & Safety Code

### Section 1797.170(b)

“Any individual certified as an EMT-I pursuant to this act shall be recognized as an EMT-I on a statewide basis, and recertification shall be based on statewide standards. Effective July 1, 1990, any individual certified as an EMT-I pursuant to this act shall complete a course of training on the nature of sudden infant death syndrome which is developed by the California SIDS program in the State Department of Health Services in consultation with experts in the field of sudden infant death syndrome.”

## CALIFORNIA CODE OF REGULATIONS

### Title 22, Division 9:

#### CHAPTER 2. EMERGENCY MEDICAL TECHNICIAN

##### § 100061. Local Accreditation.

“Local accreditation” or “accreditation” or “accredited to practice” as used in this Chapter, means authorization by the LEMSA to practice the optional skill(s) specified in Section 100064. Such authorization assures that the EMT has been oriented to the LEMSA and trained in the optional skill(s) necessary to achieve the treatment standard of the jurisdiction.

##### § 100062. Application of Chapter to Operation of Ambulances.

(c) EMTs who are not currently certified in California may temporarily perform their scope of practice in California, when approved by the medical director of the LEMSA, in order to provide emergency medical services in response to a request, if all the following conditions are met:

(1) The EMTs are registered by the National Registry of Emergency Medical Technicians or licensed or certified in another state or under the jurisdiction of a branch of the Armed Forces including the Coast Guard of the United States, National Park Service, United States Department of the Interior-Bureau of Land Management, or the United States Forest Service; and

(2) The EMTs restrict their scope of practice to that for which they are licensed or certified.

##### § 100064. EMT Optional Skills.

(a) In addition to the activities authorized by Section 100063 of this Chapter, LEMSA may establish policies and procedures for local accreditation of an EMT student or certified EMT to perform any or all of the following optional skills specified in this section.

(c) The medical director of the LEMSA shall develop a plan for each optional skill allowed. The plan shall, at a minimum, include the following:

(2) A description of the geographic area within which the optional skill will be utilized, except as provided in Section 100064(l).

(i) During a mutual aid response into another jurisdiction, an EMT may utilize the scope of practice for which s/he is trained, certified and accredited according to the policies and procedures established by his/her certifying or accrediting LEMSA.

### **CHAPTER 3. ADVANCED EMERGENCY MEDICAL TECHNICIAN**

#### §100106 Advanced EMT Scope of Practice

(c) During a mutual aid response into another jurisdiction, an Advanced EMT may utilize the scope of practice for which s/he is trained and certified according to the policies and procedures established by his/her certifying LEMSA.

#### § 100126. Advanced EMT Service Provider.

(a) A LEMSA with a LALS system, shall establish policies and procedures for the approval, designation and evaluation through its EMSQIP of Advanced EMT service provider(s). These policies and procedures shall include provisions requiring an Advanced EMT to be affiliated with an approved Advanced EMT service provider in order to perform the scope of practice specified in this Chapter.

### **CHAPTER 4. EMERGENCY MEDICAL TECHNICIAN-PARAMEDIC**

#### § 100142. Local Accreditation.

"Local Accreditation" or "accreditation" or "accreditation to practice" means authorization by the local EMS agency to practice as a paramedic within that jurisdiction. Such authorization indicates that the paramedic has completed the requirements of Section 100165 of this Chapter.

#### § 100145. Application of Chapter.

(c) A paramedic who is not licensed in California may temporarily perform his/her scope of practice in California on a mutual aid response, on routine patient transports from out of state into California, or during a special event, when approved by the medical director of the local EMS agency, if the following conditions are met:

- (1) The paramedic is licensed or certified in another state/country or under the jurisdiction of the federal government.
- (2) The paramedic restricts his/her scope of practice to that for which s/he is licensed or certified.
- (3) Medical control as specified in Section 1798 of the Health and Safety Code is maintained in accordance with policies and procedures established by the medical director of the local EMS agency.

#### § 100146. Scope of Practice of Paramedic.

(b) A paramedic shall be affiliated with an approved paramedic service provider in order to perform the scope of practice specified in this Chapter.

§ 100166. Accreditation to Practice.

(a) In order to be accredited an individual shall:

(1) Possess a current California paramedic license.

(2) Apply to the local EMS agency for accreditation.

(3) Successfully complete an orientation of the local EMS system as prescribed by the local EMS agency which shall include policies and procedures, treatment protocols, radio communications, hospital/facility destination policies, and other unique system features. The orientation shall not exceed eight classroom hours, except when additional hours are needed to accomplish subsection (a)(4) of this section, and shall not include any further testing of the paramedic basic scope of practice. Testing shall be limited to local policies and treatment protocols provided in the orientation.

(4) Successfully complete training in any local optional scope of practice for which the paramedic has not been trained and tested.

(l) During a mutual aid response into another jurisdiction, a paramedic may utilize the scope of practice for which s/he is trained and accredited according to the policies and procedures established by his/her accrediting local EMS agency.

## **Appendix C: Sample Request for Temporary Recognition of Out-of-State EMS Personnel Form**

## REQUEST FOR TEMPORARY RECOGNITION OF OUT-OF-STATE EMS PERSONNEL RESPONDING ON MUTUAL AID IN CALIFORNIA

(Print or type all information, Use additional forms as necessary)

Out-of-state EMS personnel must obtain authorization from the Local EMS Agency (LEMSA) where they will be working before they may practice in California. Under California Law, out-of-state EMS personnel who have received authorization may utilize the scope of practice for which they have been licensed/certified.

Authorization for temporary recognition is requested for the following medical personnel assigned to:

**INCIDENT:** \_\_\_\_\_ in the COUNTY(s) of: \_\_\_\_\_

under the jurisdiction of the following LEMSA(s): \_\_\_\_\_

beginning on \_\_\_\_\_ and ending on \_\_\_\_\_

	Full Name	EMT Level (circle)	Certification/ License #	Issuing Agency
1		Basic / Paramedic		
2		Basic / Paramedic		
3		Basic / Paramedic		
4		Basic / Paramedic		
5		Basic / Paramedic		
6		Basic / Paramedic		
7		Basic / Paramedic		
8		Basic / Paramedic		
9		Basic / Paramedic		

**I attest that I have physically examined the certification/licenses of the above individuals.**

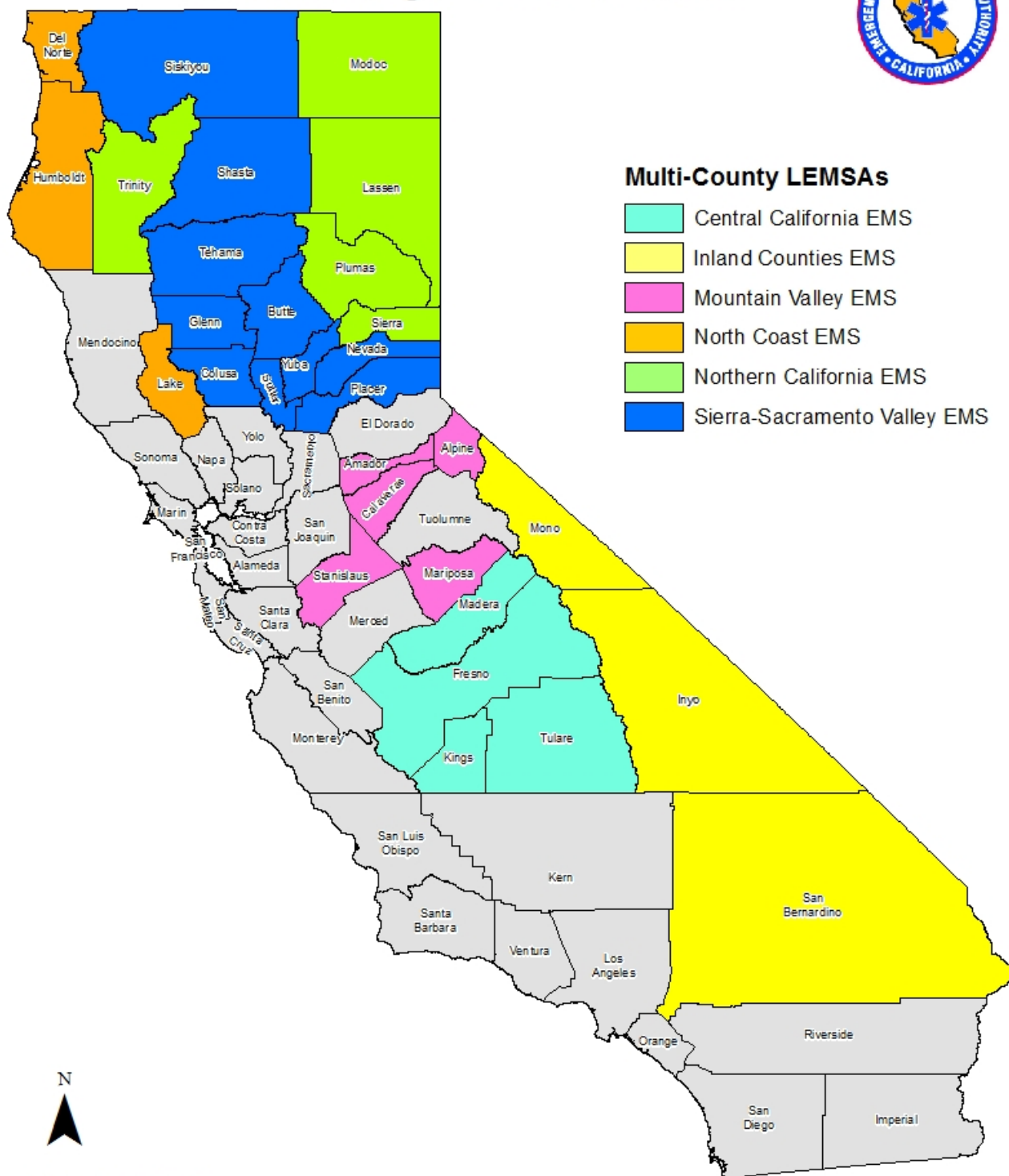
		Telephone	
Medical Unit Leader - Print	Agency	Fax	
Signature		Date	

		Telephone	
Medical Director - Print	LEMSA	Fax	
Signature		Date	

## **Appendix D: LEMSA Information**

# LOCAL EMS AGENCY REGIONAL MAP

## Local EMS Agencies in California

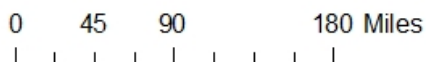


### Multi-County LEMSAs

- Central California EMS
- Inland Counties EMS
- Mountain Valley EMS
- North Coast EMS
- Northern California EMS
- Sierra-Sacramento Valley EMS



California EMS Authority  
EMS Systems Division



## LOCAL EMS AGENCY LISTING

(As of 6/26/2018, for a more up to date list visit the [EMS Authority's web page](#))

### **Alameda County**

1000 San Leandro Blvd., Ste. 200  
San Leandro, CA 94577  
(510) 618-2050  
FAX: (510) 618-2099  
<http://www.acphd.org/ems.aspx>

### **Central California**

(Fresno, Kings, Madera, Tulare)  
PO Box 11867, Fresno, CA 93775  
(559) 600-3387  
FAX: (559) 600-7691  
<http://www.ccemsa.org/>

### **Coastal Valleys**

(Sonoma/Mendocino)  
195 Concourse Blvd.,  
Santa Rosa, CA 95403  
(707) 565-6501  
FAX: (707) 565-6510  
<http://www.sonoma-county.org/cvremis/>

### **Contra Costa County**

1340 Arnold Drive, Suite 126  
Martinez, CA 94553  
(925) 646-4690  
FAX: (925) 646-4379  
<http://www.cccems.org/>

### **El Dorado County**

2900 Fair Lane Court,  
Placerville, CA 95667  
(530) 621-6500  
FAX: (530) 621-2758  
<http://www.edcgov.us/ems>

### **Imperial County**

935 Broadway Ave El Centro, CA 92243  
(442) 265-1364  
FAX: (760) 482-4517  
<http://www.icphd.com/emergency-medical-services/>

### **Inland Counties (ICEMA)**

(San Bernardino, Inyo, Mono)  
1425 South "D" St.  
San Bernardino, CA 92415-0060  
(909) 388-5823  
FAX: (909) 388-5825  
<http://www.sbcounty.gov/icema>

### **Kern County**

Kern County Public Health Services  
Dept., EMS Division  
1800 Mt. Vernon Ave.  
Bakersfield, CA 93306  
(661) 868-5215  
FAX: (661) 868-0225  
<http://kernpublichealth.com/ems/>

### **Los Angeles County**

10100 Pioneer Blvd., Suite 200  
Santa Fe Springs, CA 90670  
(562) 347-1604  
FAX: (562) 941-5835  
<http://ems.dhs.lacounty.gov/>

### **Marin County**

1600 Los Gatos Dr., Suite 220  
San Rafael, CA 94903  
(415) 473-6871  
FAX: (415) 473-3747  
<http://www.marinems.org/>

### **Merced County**

260 East 15th St.  
Merced, CA 95341  
(209) 381-1250  
FAX: (209) 381-1259  
<http://www.co.merced.ca.us/index.asp?NID=581>

### **Monterey County**

1441 Schilling Place, South Building  
Salinas, CA 93906  
(831) 755-5013  
<http://www.mocoems.org/>



**Mountain Valley**

(Alpine, Amador, Calaveras, Mariposa, Stanislaus)  
1101 Standiford Ave. #D1  
Modesto, CA 95350  
(209) 529-5085  
FAX: (209) 529-1496  
<http://www.mvemsa.com/>

**Napa County**

2751 Napa Valley Corp. Dr., Bldg. B  
Napa, CA 94558  
Main: (707) 253-4341  
Fax: (707) 299-4126  
<http://countyofnapa.org/ems>

**North Coast EMS Agency**

(Del Norte, Humboldt, Lake)  
3340 Glenwood Ave.  
Eureka, CA 95501  
(707) 445-2081  
FAX: (707) 445-0443  
<http://www.northcoastems.com/>

**Northern California**

(Glenn, Lassen, Modoc, Plumas, Sierra, Trinity)  
930 Executive Way, Suite 150  
Redding, CA 96001  
(530) 229-3979  
FAX: (530) 229-3984  
<http://www.norcalems.org/>

**Orange County**

Emergency Medical Services  
405 West Fifth St., Suite 301A  
Santa Ana, CA 92701  
(714) 834-3500  
FAX: (714) 834-3125  
<http://healthdisasteroc.org/ems/>

**Riverside County**

4210 Riverwalk Parkway Suite 300  
Riverside, CA 92505  
(951) 358-5029  
FAX: (951)358-5160  
<http://www.rivcoems.org/>

**Sacramento County**

9616 Micron Ave, Ste 960  
Sacramento, CA 95827  
(916) 875-9753  
FAX: (916) 875-9711  
<http://www.dhhs.saccounty.net/PRI/EMS/Pages/EMS-Home.aspx>

**San Benito County**

471 Fourth Street  
Hollister, CA 95023  
(831) 636-4168  
FAX: (831) 636-4165  
<http://www.sanbenitoco.org/ems/>

**San Diego County**

6255 Mission Gorge Rd.  
San Diego, CA 92120  
(619) 285-6524  
[http://www.sdcounty.ca.gov/hhsa/programs/phs/emergency\\_medical\\_services/index.html](http://www.sdcounty.ca.gov/hhsa/programs/phs/emergency_medical_services/index.html)

**City and County of San Francisco**

300 Van Ness Ave., Suite 3300  
San Francisco, CA 94102  
(415) 487-5000  
FAX: (415) 552-0194  
<http://sfdem.org/ems-agency>

**San Joaquin County**

P.O. Box 220,  
French Camp, CA 95231-0220  
(209) 468-6818  
FAX: (209) 468-6725  
<http://www.sigov.org/ems>

**San Luis Obispo County**

2180 Johnson Ave., 2nd Floor  
San Luis Obispo, CA 93401  
(805) 788-2512  
FAX: (805) 788-2517  
<http://www.sloemsa.org/>

**San Mateo County**

801 Gateway Blvd 2nd Floor  
South San Francisco, CA 94080  
(650) 573-2564  
FAX: (650) 573-2029  
<http://www.smchealth.org/>

**Santa Barbara County**

300 North San Antonio Rd.  
Santa Barbara, CA 93110-1316  
(805) 681-5274  
FAX: (805) 681-5142  
<http://cosb.countyofsb.org/phd/ems.aspx?id=20620>

**Santa Clara County**

700 Empey Way, San Jose, CA 95128  
(408) 794-0610  
FAX: (408) 792-1350  
<http://www.sccgov.org/sites/ems>

**Santa Cruz County**

1080 Emeline Ave.  
Santa Cruz, CA 95060  
(831) 454-4751  
FAX: (831) 454-4272  
<http://www.santacruzhealth.org/HSAHome/HSADivisions/PublicHealth/EmergencyMedicalServices.aspx>

**Sierra-Sacramento Valley**

(Butte, Colusa, Nevada, Placer, Shasta,  
Siskiyou, Sutter, Tehama, Yuba)  
5995 Pacific St., Rocklin, CA 95677  
(916) 625-1702  
FAX: (916) 625-1730  
<http://www.ssvems.com/>

**Solano County**

335 Tuolumne St.  
Vallejo, CA 94590  
(707) 784-8155  
FAX: (707) 421-6618  
<http://www.co.solano.ca.us/depts/ems/default.asp>

**Tuolumne County**

20111 Cedar Road North  
Sonora, CA 95370  
(209) 533-7460  
FAX: (209) 533-7406  
<http://www.tuolumnecounty.ca.gov/index.aspx?NID=302>

**Ventura County**

2220 E. Gonzales Rd., Suite 200  
Oxnard, CA 93036-0619  
(805) 981-5301  
FAX: (805) 981-5300  
<http://www.vchca.org/ph/ems/>

**Yolo County**

137 N. Cottonwood Street, Suite 2601  
Woodland, CA 95695  
(530) 666-8671  
<http://www.yolocounty.org/health-human-services/community-health/emergency-medical-services-ems>

# EMS Personnel Mutual Aid Compendium

**Edmund G. Brown, Jr.**  
**Governor**  
**State of California**

**Diana S. Dooley**  
**Secretary**  
**Health and Human Services Agency**

**Howard Backer, MD, MPH, FACEP**  
**Director**  
**Emergency Medical Services Authority**

---

EMSA Publication # 301  
Updated June 26, 2018

[www.emsa.ca.gov](http://www.emsa.ca.gov)