

If you're having trouble viewing this email, you may see it online



PSI NEWS

We want to extend our warmest wishes to you and your family for the New Year!



PSI ANNUAL CONFERENCE



Conference dates

- June 28-30: Main conference, in Portland, Oregon for 2019

- June 26-27: 2-day pre-conference Certificate Course, Perinatal Mood and Anxiety Disorders: Components of Care
- June 30: 1-day Advanced Psychotherapy Training

Call for conference presentation proposals: **Deadline to submit proposals is Friday, January 4th**

Don't forget to submit your proposals for the Annual Conference! We welcome presentations with scientific data as well as those addressing clinical expertise or community projects. Conference presentations will include topics relevant to: psychopharmacology; psychobiology; emerging technology; psychotherapy; community systems, peer support; diversity and culturally-informed services; integrated systems; and fathers, families, and partners. **READ MORE**

Create an account and submit proposals here:

https://psi.societyconference.com/?conf_id=10004&m=user&h=home

Susan Hickman Research Award

The Susan A. Hickman Memorial Research Award is given by PSI each year to an individual involved in a scholarly research project that contributes to the field of perinatal mental health. The recipient is selected by the PSI Research Committee among qualified applicants. The full award is \$5000, which includes a stipend for travel to attend the annual PSI Conference. The 2019 award will be presented at the conference in Portland Oregon on June 28, 2019.

- Visit here for more info on the Hickman Award: <https://bit.ly/2yVjZIm>
- Create an account and apply here: https://psi.societyconference.com/?conf_id=10004&m=user&h=home
- Deadline: **April 1st, 2019**

JANE HONIKMAN LIBRARY CATALOGUE ONLINE!



We are excited to announce that PSI Founder Jane Honikman has organized her decades worth of documents into a library. She has made the library catalogue accessible online.

Student Rachel Linfield received a grant from Princeton University to travel to Jane's home in Santa Barbara CA. She conducted research for her senior thesis by using this valuable collection of perinatal mental health history.

PSI would literally not exist without the wit, wisdom, and perseverance of Jane Honikman and her vision to create this 32-year-old organization. Take a pilgrimage to where the new parent support movement began in the 1970s at this link:

<https://janehonikman.com/library/>

FEATURED PSI MEMBER: Sharon Dekel, PhD

PSI's 2018 Susan A Hickman Memorial Awardee

Assistant Professor of Psychology, Harvard Medical School



Dr. Sharon Dekel

Our featured member this month is doing ground-breaking, cross-discipline research at Massachusetts General Hospital, working to develop novel early detection tools, and

increased precision and varieties of treatment for postpartum mental health disorders. For more about Dr. Dekel and her research, go to our member spotlight here: <http://www.postpartum.net/member-spotlight/featured-psi-member-sharon-dekel-phd/>

You can catch up on our previous spotlights here. If you know of a PSI member you think we should feature, contact membership@postpartum.net.

PSI CERTIFICATE TRAININGS

2-Day PSI PMD Certificate Trainings and 1-Day Advanced Trainings



The 2-day PSI Certificate of Completion Course, taught by experienced and engaging faculty, is a thorough and evidence-based curriculum designed for nurses, physicians, social workers, mental health providers, childbirth professionals, social support providers, or anyone interested in learning skills and knowledge for assessment and treatment of perinatal mood disorders. Registration includes training binder, handouts, breakfast and lunch, and continuing education credits. Approved for 14.5 CMEs, CNEs, CEes. Write to training@postpartum.net for more information, and visit [HERE](#) for the newest training dates and locations, sin.

Upcoming PMD Certificate Trainings

- February 27 - 28, 2019, Gilbert, Arizona (plus 3/1 Advanced*)
- March 28-29, 2019, Champaign, Illinois (plus 3/30 Advanced*)
- April 4-5, 2019, Anchorage Alaska (plus 4/6 Advanced*)
- April 11-12, 2019, Johnson City, Tennessee (plus 4/13 Advanced*)
- June 26-27, 2019, Portland, Oregon (plus 6/30 Advanced*)

* *Day 3 - Advanced Psychotherapy Trainings: The advanced psychotherapy course, or an equivalent six-hour advanced psychotherapy course that includes perinatal mental health, is a prerequisite for the Perinatal Mental Health Certification in the mental health/psychotherapy specialty. You can see alternative courses approved as pre-requisites [here](#).*

MEMBERSHIP CORNER

This year we re-worked our membership categories, so keep this in mind when you **renew** (or **join**). Current individual categories:

- Professional Provider \$160.00/year (Psychiatrists, counselors, midwives, nurses, family doctors, and other providers)
- Community Champion \$55.00/year (Community-based worker or volunteer not earning at a professional level, such as doulas, volunteer facilitators of free support groups, or just getting started in the field)
- Friend of PSI \$70.00/year (Happy to support PSI's mission; not a current care provider)
- Student \$35.00/year

We also have cost-effective group memberships, which are now based on the number of sub-members instead of the type of organization/business.

If you need any assistance in converting from an old to a new category when you renew, or if you have other membership questions, reach out to Edith at membership@postpartum.net.

Member benefits range from access to our online groups (including our popular Reproductive Psychiatry listserv and Care Providers listserv, and the PSI Care Providers virtual consultation group), to discounts on trainings and educational materials.

Membership dues support PSI as a whole as we provide direct peer support to families, train professionals, and provide a bridge to connect them. Thank you for being part of the worldwide safety net!

NEW! National PROVIDER DIRECTORY

Visit the directory here: <https://directorypsychapters.com/>

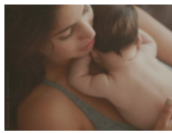


[FIND A PROVIDER](#) [FIND A STATE CHAPTER](#) [LEARN MORE](#)

DID YOU KNOW? 1 IN 7 WOMEN SUFFER FROM POSTPARTUM DEPRESSION.

We provide direct peer support to families, train professionals, and provide a bridge to connect them.

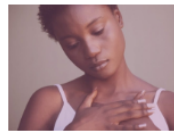
[Click here](#) to take a 10-question self-rating scale to find out if you have postpartum symptoms

BROWSE BY CATEGORY[more categories](#)

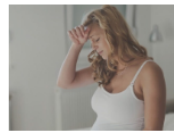
Additional
Training/Certifications
(167)



Languages (27)



Online Services
Available (89)



Specialities (206)



Support Group (60)



Treatment Orientation
(208)

Check out the National Perinatal Mental Health Provider Directory. First piloted in Colorado, we are now listing providers from all US states. Visitors to the directory will be able to search for providers by location, fee and insurance information, and other important categories. The Directory links back to www.postpartum.net, where families will find links to local support coordinators and groups to complement mental health treatment.

PMH Providers can apply to be part of the directory at no charge. We have categories for healthcare providers, mental health professionals, support groups, and affiliated professions. Applicants are reviewed before approval, and need to meet the following criteria:

- A professional perinatal mental health provider in good standing with state licensing standards.
- Completed specialized training in perinatal mental health, such as PSI's 2-day Certificate training, the 2020 Mom/PSI Webinar Certificate Course, or other specialized perinatal mental health trainings.

Our current goal is to collect a comprehensive list of providers and we will be sharing this resource publicly very soon! You can sign up on the directory at <https://directorypsychapters.com/list-your-practice>

NEW to PSI!

New programs:

- Perinatal Mental Health Certification
- Frontline Provider Training - for primary care providers
- Perinatal Psychiatric Consult Line - for medical professionals

New on our website:

- Media section to help members of the print and broadcast media who are covering stories related to perinatal mood and anxiety disorders

- A revamped home page, making it easier to find our HelpLine for people currently in need of perinatal mental health support. Our HelpLine has both English and Spanish support, and both phone and text options.

Congratulations to the new Certified Perinatal Mental Health Professionals (PMH-C)!



We are proud to share the list of the first Certified Perinatal Mental Health Professionals.

Our First Cohort! Congratulations to you all!

Alabama: Jennifer Thompson

Arizona: Danica Denton, KIm Kriesel, Michelle Lacy, Kristine Norris

California: Stephanie Greunke, Pec Indman, Katayune Kaeni, Gabrielle Kaufman, Megan Kornbluth, Meri Levy, Elyse Springer, Bethany Warren

Colorado: Amanda Baker, Rebecca Hart, Sarah Rasche, Keiko Yoneyama-Sims

Connecticut: Elaine Flynn, Destiny Gillman, Traci McComiskey, Sarah Pires

Florida: Shari-ann James, Andrea Press, Phyliss Taylor, Meyleen Velasquez

Hawaii: Jessica Logan

Iowa: Shannon Wilson

Idaho: Kellie Northam

Illinois: Sophia Biesanz, Sarah Cline, Kathryn Gardner, Suma Karandikar, Kathryn Kmiecik, Erika Knuth, Jamie Kreiter, Jessica Lee, Catherine Olson, Charlene Sanuade, Monica Schmitt

Indiana: Birdie Gunyon Meyer

Kentucky: Kathryn Sutton

Louisiana: Joy Couvillion Louis, Samantha Rauber, Elizabeth Walters Vivian

Massachusetts: Narlie Bedney, Lauren Harris, Susan Marchioni, Julie Paul

Maryland: Chana Lockerman

Maine: Jennifer Daly

Minnesota: Crystal Clancy, Lauren Robbins

Missouri: Kimberly Brandt

North Carolina: Meghan Coltrane, Hilary Mandzik, Robin Minick, Roxanne Rosenberg, Kelly Smedley

North Dakota: Lea Berentson

Nebraska: Kristen Treat

New Jersey: Lisa Tremayne, Aurielle Wilderman

Nevada: Ashley Hanna-Morgan

New York: Amanda Martin, Amanda Tinkelman

Oklahoma: Felicia Hurst, Brandi Ricketts

Oregon: Wendy Davis, Sarah Zuber

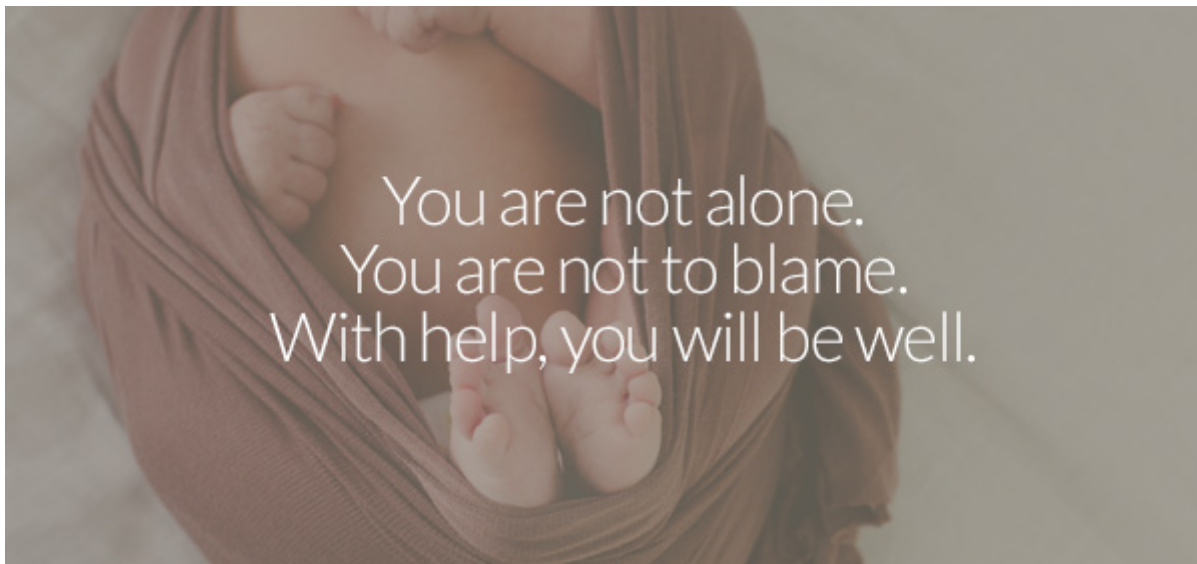
Pennsylvania: Joanna Cole

South Carolina: Suzannah Baldwin

South Dakota: Kimberly Belben

Tennessee: Emily Pardy, Elizabeth Shelton

Texas: Bina Bird, Souby George, Neysa Johnson, Teresa Lanza di Scalea, Heidi McBain, Kelsey Seifert, Christyna Skidmore



24/7 Helpline number:

1.800.944.4773

GET HELP | LEARN | JOIN | PROFESSIONALS
RESOURCES | BLOG | ABOUT

Donate



6706 SW 54th Avenue, Portland, OR 97219
© 2018 Postpartum Support International

To unsubscribe from future mailings please click [here](#).

