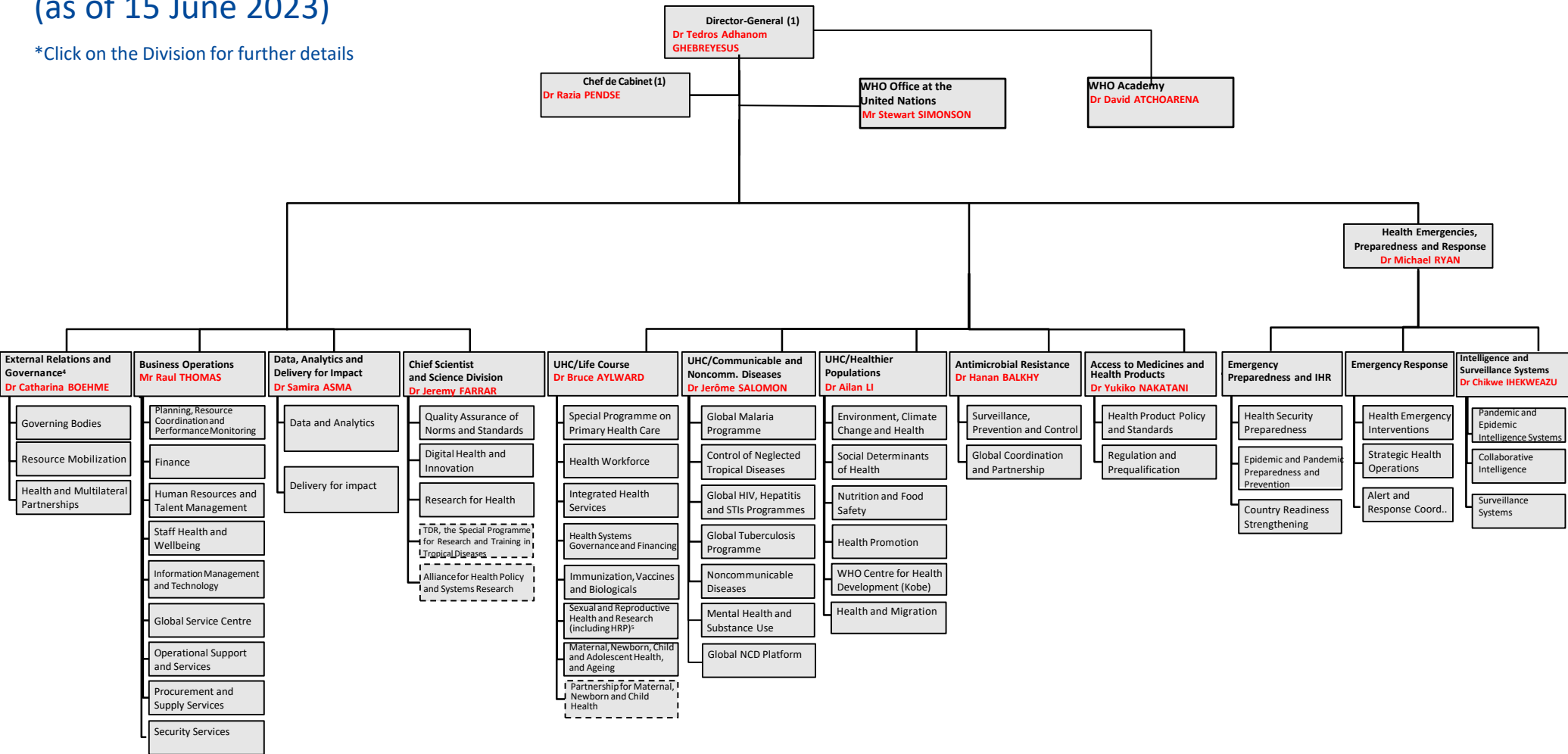


# World Health Organization Headquarters\*

(as of 15 June 2023)

\*Click on the Division for further details



(1) Includes: Office of the Director General; Chief Nurse Office; Compliance and Risk Management and Ethics (CRE); Country Strategy and Support (CSS); Communication (DCO); Evaluation Unit (EVL); Global Board of Appeal (GBA); Gender, Rights and Equity - Diversity, Equity and Inclusion (GRE); GPMB; IOAC; Office of Internal Oversight Services (IOS); Office of the Legal Counsel (LEG); Office of the Ombudsperson and Mediation Services (OMB); Polio Eradication and Polio Transition Programme (POL); Prevention and Response to Sexual Exploitation (PRS); Special Projects and Transformation (SPaT).

# Antimicrobial Resistance

Dr Hanan BALKHY ([balkyh@who.int](mailto:balkyh@who.int))

| Full Name  | Department                                  | eMail  |
|--|---|--|
| VAN WEEZENBEEK, Doctor Catharina Simonne Beatrix | HQ/SPC Surveillance, Prevention and Control | <a href="mailto:vanweezenbeekc@who.int">vanweezenbeekc@who.int</a> |
| GETAHUN GEBRE, Doctor Haileyesus                 | HQ/GCP Global Coordination and Partnership  | <a href="mailto:getahunh@who.int">getahunh@who.int</a>             |



# Business Operations

Mr Raul THOMAS ( [thomasr@who.int](mailto:thomasr@who.int) )

| Full Name                         | Department   | eMail  |
|-----------------------------------|--|--|
| HOLLO, Mr Imre                    | HQ/PRP Planning Resource Coordination and Per Monitoring | <a href="mailto:holloi@who.int">holloi@who.int</a>               |
| KYRIACOU, Mr George               | HQ/FNM Finance (Comptroller)                             | <a href="mailto:kyriacoug@who.int">kyriacoug@who.int</a>         |
| LINKINS, Ms Jennifer Marie        | HQ/HRT Human Resources and Talent Management             | <a href="mailto:linkinsj@who.int">linkinsj@who.int</a>           |
| CROSS, Doctor Caroline Marie      | HQ/SHW Staff Health and Wellbeing                        | <a href="mailto:crossc@who.int">crossc@who.int</a>               |
| GURUBACHARYA, Mr Biswamber (a.i.) | HQ/IMT Information Management and Technology             | <a href="mailto:gurubacharyab@who.int">gurubacharyab@who.int</a> |
| KERVINIO, Mr Yann                 | HQ/GSC Global Service Centre                             | <a href="mailto:kervinioy@who.int">kervinioy@who.int</a>         |
| EL-KHODARY, Mr Hatem              | HQ/OSS Operational Support and Services                  | <a href="mailto:elkhodaryh@who.int">elkhodaryh@who.int</a>       |
| KASTNER, Ms Angela                | HQ/SUP Procurement and Supply Services                   | <a href="mailto:kastnera@who.int">kastnera@who.int</a>           |
| BERMUDEZ, Angelito (a.i.)         | HQ/SEC Security Services                                 | <a href="mailto:bermudezan@who.int">bermudezan@who.int</a>       |



# Data, Analytics and Delivery for Impact

Dr Samira ASMA ([asmas@who.int](mailto:asmas@who.int))

| Full Name             | Department                 | eMail  |
|-----------------------|----------------------------|--|
| MAC FEELY, Mr Stephen | HQ/DNA Data and Analytics  | <a href="mailto:macfeelys@who.int">macfeelys@who.int</a> |
| URSU, Doctor Pavel    | HQ/DFI Delivery for Impact | <a href="mailto:ursup@who.int">ursup@who.int</a>         |



# Director-General's Office

Dr Tedros Adhanom GHEBREYESUS ([DGOffice@who.int](mailto:DGOffice@who.int))

Chef de Cabinet: Dr Razia PENDSE ([pendsera@who.int](mailto:pendsera@who.int))

## Director General's Office Senior Leadership

| Full Name                           | Directors  | eMail  |
|-------------------------------------|--|--|
| ACHARYA, Doctor Shambhu Prasad      | HQ/CSS Country Strategy and Support                                | <a href="mailto:acharyas@who.int">acharyas@who.int</a>     |
| ANKRAH-NTAMBWE, Ms Aba Tweba (a.i.) | HQ/OMB Office of the Ombudsperson and Mediation Services           | <a href="mailto:ankraha@who.int">ankraha@who.int</a>       |
| EL-HALABI, Ms Shenaaz               | HQ/ODG Office of the Director-General                              | <a href="mailto:elhalabis@who.int">elhalabis@who.int</a>   |
| GAMHEWAGE, Doctor Gaya Manori       | HQ/PRS Preventing and Responding to Sexual Exploitation            | <a href="mailto:gamhewageg@who.int">gamhewageg@who.int</a> |
| IGARASHI, Doctor Masahiro           | HQ/EVL Evaluation Unit   | <a href="mailto:igarashim@who.int">igarashim@who.int</a>   |
| KENNEY, Ms Erin (a.i.)              | HQ/GRE Gender, Rights and Equity - Diversity, Equity and Inclusion | <a href="mailto:kenneye@who.int">kenneye@who.int</a>       |
| LEVY, Ms Gabriella Stern            | HQ/DCO Communications  | <a href="mailto:sterng@who.int">sterng@who.int</a>         |
| MC CLENNON, Ms Lisa Marie           | HQ/IOS Office of Internal Oversight Services                       | <a href="mailto:mcclennonl@who.int">mcclennonl@who.int</a> |
| MLITZKE, Mr Andreas Horst           | HQ/CRE Compliance and Risk Management and Ethics                   | <a href="mailto:mlitzkea@who.int">mlitzkea@who.int</a>     |
| O' LEARY, Mr Aidan                  | HQ/POL Polio Eradication   | <a href="mailto:olearya@who.int">olearya@who.int</a>       |
| SEYDOUX, Ms Stephanie               | HQ/EMA Envoy for Multilateral Affairs                              | <a href="mailto:seydouxs@who.int">seydouxs@who.int</a>     |
| SIMONSON, Mr Stewart                | HQ/WUN WHO Office at the United Nations                            | <a href="mailto:simonsons@who.int">simonsons@who.int</a>   |
| SINGER, Doctor Peter Alexander      | Special Adviser - Director General's Office                        | <a href="mailto:singerp@who.int">singerp@who.int</a>       |
| TUIPULOTU, Doctor Amelia            | HQ/CNO Chief Nurse Office  | <a href="mailto:tuipulotua@who.int">tuipulotua@who.int</a> |
| WALTON, Mr Derek Antony Ruffel      | HQ/LEG Office of the Legal Counsel                                 | <a href="mailto:waltond@who.int">waltond@who.int</a>       |

## Academy

| Full Name                | Executive Director | eMail  |
|--------------------------|--------------------|--|
| ATCHOARENA, Doctor David | WHO Academy        | <a href="mailto:atchoarenad@who.int">atchoarenad@who.int</a> |

## FCTC

| Full Name                       |                                | eMail  |
|---------------------------------|--------------------------------|--|
| BLANCO MARQUIZO, Doctor Adriana | Head of Convention Secretariat | <a href="mailto:blancoa@who.int">blancoa@who.int</a> |



# External Relations and Governance

Dr Catharina BOEHME ([boehmec@who.int](mailto:boehmec@who.int))

| Full Name                            | Department                                  | eMail  |
|--------------------------------------|---|--|
| ARMSTRONG, Doctor Timothy Peter      | HQ/GBS Governing Bodies                     | <a href="mailto:armstrongt@who.int">armstrongt@who.int</a>       |
| MEULENBERGS, Ms Leen (a.i.)          | HQ/CRM Coordinated Resource Mobilization    | <a href="mailto:meulenbergs@who.int">meulenbergs@who.int</a>     |
| SILBERSCHMIDT, Doctor Gaudenz Ulrich | HQ/HMP Health and Multilateral Partnerships | <a href="mailto:silberschmidt@who.int">silberschmidt@who.int</a> |



# UHC/Healthier Populations

Dr Ailan LI ([lia@who.int](mailto:lia@who.int))

| Full Name                        | Department                                      | eMail  |
|----------------------------------|---|--|
| NEIRA, Doctor Maria Purificacion | HQ/ECH Environment, Climate Change and Health   | <a href="mailto:neiram@who.int">neiram@who.int</a>       |
| KRUG, Doctor Etienne G.G.        | HQ/SDH Social Determinants of Health            | <a href="mailto:kruge@who.int">kruge@who.int</a>         |
| BRANCA, Doctor Francesco         | HQ/NFS Nutrition and Food Safety                | <a href="mailto:brancaf@who.int">brancaf@who.int</a>     |
| KRECH, Doctor Ruediger           | HQ/HPR Health Promotion HEP                     | <a href="mailto:krechr@who.int">krechr@who.int</a>       |
| BARBER, Doctor Sarah Louise      | HQ/WKC WHO Centre for Health Development (Kobe) | <a href="mailto:barbers@who.int">barbers@who.int</a>     |
| SEVERONI, Doctor Santino         | HQ/PHM Health and Migration Programme           | <a href="mailto:severonis@who.int">severonis@who.int</a> |



# Access to Medicines and Health Products

Dr Yukiko NAKATANI ([nakataniy@who.int](mailto:nakataniy@who.int) )

| Full Name                    | Department                                 | eMail  |
|------------------------------|--|--|
| ONDARI, Doctor Clive         | HQ/HPS Health Product Policy and Standards | <a href="mailto:ondaric@who.int">ondaric@who.int</a> |
| GASPAR, Doctor Rogerio Paulo | HQ/RPQ Regulation and Prequalification     | <a href="mailto:gasparr@who.int">gasparr@who.int</a> |





# Chief Scientist and Science Division

Dr Jeremy FARRAR ([farrari@who.int](mailto:farrari@who.int))

| Full Name                      | Department   | eMail  |
|--------------------------------|--|--|
| SHEIKH, Doctor Mubashar Riaz   | HQ/QNS Quality Assurance of Norms and Standards        | <a href="mailto:sheikhm@who.int">sheikhm@who.int</a>         |
| LABRIQUE, Doctor Alain Bernard | HQ/DHI Digital Health and Innovation                   | <a href="mailto:labriquea@who.int">labriquea@who.int</a>     |
| REEDER, Doctor John Charles    | HQ/RFH Research for Health                             | <a href="mailto:reederj@who.int">reederj@who.int</a>         |
| REEDER, Doctor John Charles    | HQ/TDR Special Programme for TDR                       | <a href="mailto:reederj@who.int">reederj@who.int</a>         |
| RASANATHAN, Doctor Kumanan     | HQ/HSR Alliance for Health Policy and Systems Research | <a href="mailto:rasanathank@who.int">rasanathank@who.int</a> |



# UHC/Communicable and Noncommunicable Diseases

Dr Jérôme SALOMON ([salomonj@who.int](mailto:salomonj@who.int))

| Full Name                            | Department                                       | eMail  |
|--------------------------------------|--|--|
| AKSELROD, Doctor Svetlana Valeryevna | HQ/GNP Global NCD Platform                       | <a href="mailto:akselrods@who.int">akselrods@who.int</a>   |
| NGAMIJE, Doctor Daniel               | HQ/GMP Global Malaria Programme                  | <a href="mailto:ngamijed@who.int">ngamijed@who.int</a>     |
| FALL, Doctor Ibrahima Socé           | HQ/NTD Control of Neglected Tropical Diseases    | <a href="mailto:socef@who.int">socef@who.int</a>           |
| DOHERTY, Doctor Meg Caroline         | HQ/HHS Global HIV, Hepatitis and STIs Programmes | <a href="mailto:dohertym@who.int">dohertym@who.int</a>     |
| KASAEVA, Doctor Tereza               | HQ/GTB Global Tuberculosis Programme             | <a href="mailto:kasaevat@who.int">kasaevat@who.int</a>     |
| MIKKELSEN, Doctor Bente              | HQ/NCD Noncommunicable Diseases                  | <a href="mailto:mikkelsenb@who.int">mikkelsenb@who.int</a> |
| KESTEL, Ms Devora Lillia             | HQ/MSD Mental Health and Substance Use           | <a href="mailto:kesteld@who.int">kesteld@who.int</a>       |



# UHC/Life Course

Dr Bruce AYLWARD ([aylwardb@who.int](mailto:aylwardb@who.int))

| Full Name                        | Department   | eMail  |
|----------------------------------|--|--|
| DALIL, Doctor Suraya             | HQ/PHC Special programme on Primary Health Care              | <a href="mailto:dalilsu@who.int">dalilsu@who.int</a>       |
| CAMPBELL, Mr James William       | HQ/HWF Health Workforce                                      | <a href="mailto:campbellj@who.int">campbellj@who.int</a>   |
| EGGERS, Doctor Rudi              | HQ/IHS Integrated Health Services                            | <a href="mailto:eggersr@who.int">eggersr@who.int</a>       |
| EDEJER, Doctor Tessa (a.i.)      | HQ/HGF Health Systems Governance and Financing               | <a href="mailto:tantorrest@who.int">tantorrest@who.int</a> |
| O'BRIEN, Doctor Katherine Louise | HQ/IVB Immunization, Vaccines and Biologicals                | <a href="mailto:obrienk@who.int">obrienk@who.int</a>       |
| ALLOTEY, Doctor Pascale          | HQ/SRH Sexual and Reproductive Health and Research           | <a href="mailto:alloteyp@who.int">alloteyp@who.int</a>     |
| BANERJEE, Doctor Anshu           | HQ/MCA Maternal, Newborn, Child & Adolescent Health & Ageing | <a href="mailto:banerjeea@who.int">banerjeea@who.int</a>   |
| FOGSTAD, Mrs Helga               | HQ/NMC Partnership for Maternal Newborn and Child Health     | <a href="mailto:fogstadh@who.int">fogstadh@who.int</a>     |



# Health Emergencies

Dr Michael RYAN ([ryanm@who.int](mailto:ryanm@who.int)) – Executive Director

Dr Chikwe IHEKWEAZU ([cihekweazu@who.int](mailto:cihekweazu@who.int)) – Health Emergency Intelligence and Surveillance Systems

| Full Name                    | Department   | eMail  |
|------------------------------|--|--|
| PENDERGAST, Mr Scott Douglas | HQ/HEO EXD Office Health Emergencies Preparedness & Response | <a href="mailto:pendergasts@who.int">pendergasts@who.int</a> |

| <b>Emergency Preparedness and IHR</b> | Department   | eMail  |
|---------------------------------------|--|--|
| CHUNGONG, Doctor Stella               | HQ/HSP Health Security Preparedness                    | <a href="mailto:chungongs@who.int">chungongs@who.int</a> |
| BRIAND, Doctor Sylvie                 | HQ/EPP Epidemic & Pandemic Preparedness and Prevention | <a href="mailto:briands@who.int">briands@who.int</a>     |
| EMIROGLU, Doctor Nedret               | HQ/CRS Country Readiness Strengthening                 | <a href="mailto:emiroglun@who.int">emiroglun@who.int</a> |

| <b>Emergency Response</b>          | Department                             | eMail  |
|------------------------------------|--|--|
| MAHAMUD, Doctor Abdi Rahman (a.i.) | HQ/ARC Alert and Response Coordination | <a href="mailto:mahamuda@who.int">mahamuda@who.int</a> |
| MUSANI, Mr Altaf                   | HQ/HEI Health Emergency Interventions  | <a href="mailto:musania@who.int">musania@who.int</a>   |
| YAO, Doctor N'da Konan Michel      | HQ/SHO Strategic Health Operations     | <a href="mailto:yaom@who.int">yaom@who.int</a>         |

| <b>Health Emergency Intelligence and Surveillance Systems</b> |   |  |
|---|---|--|
| HERSEY, Ms Sara   | HQ/COL Collaborative Intelligence                 | <a href="mailto:herseys@who.int">herseys@who.int</a> |
| KRAUSE, Doctor Gérard   | HQ/SRV Surveillance Systems                       | <a href="mailto:krauseg@who.int">krauseg@who.int</a> |
| MORGAN, Doctor Oliver William Colville                        | HQ/ISY Pandemic and Epidemic Intelligence Systems | <a href="mailto:omorgan@who.int">omorgan@who.int</a> |

