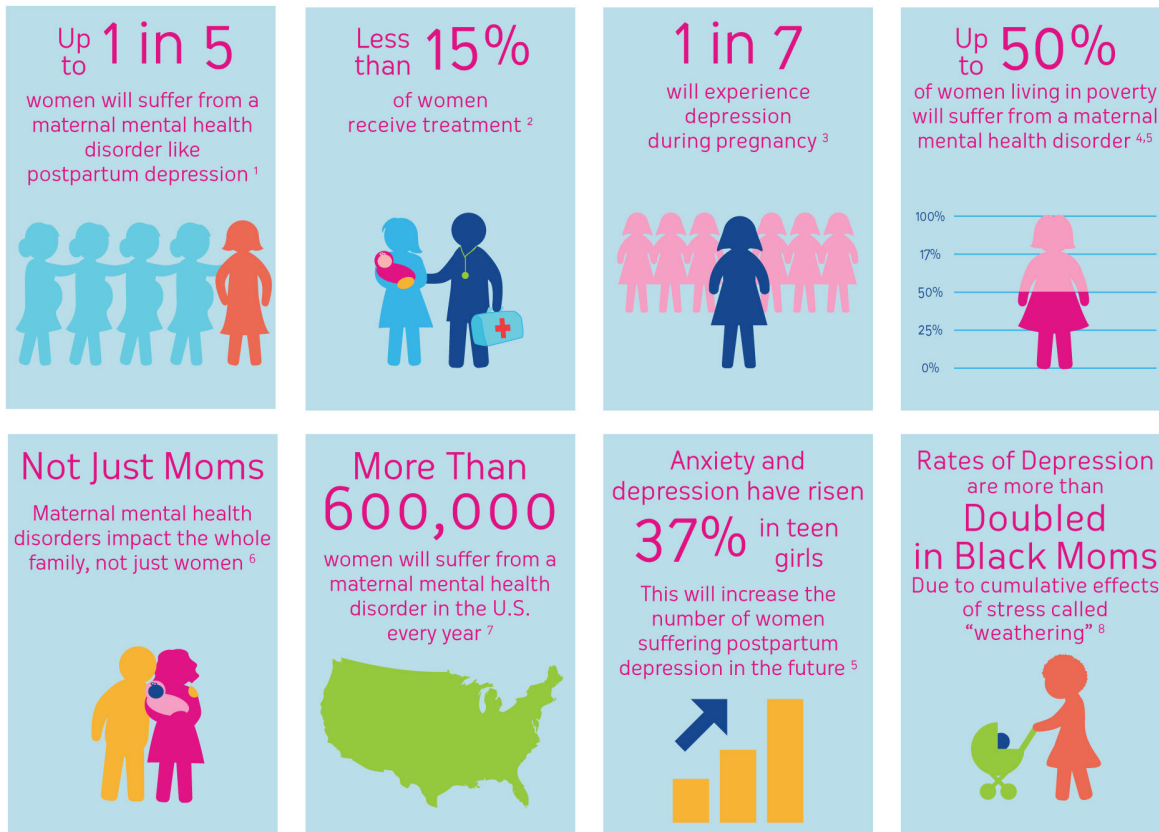




Contents

Where We've Been	2
Where We're Headed	2
Introduction	3
The North Star	3
Our North Star; Our Vision	3
Who We Serve	3
Our Values	4
What Makes Us Unique	4
Our Approaches	5
Definitions	6
Our Focus Areas & Strategies	7
Focus Areas and Strategic Tactics in Detail	9
Availability of Providers & Care	9
Sample Strategic Tactics	10
Appropriate Screening/Testing	12
Sample Strategic Tactics	12
Ample Coverage/Low Cost	13
Sample Strategic Tactics	13
Implementation of our Framework	14

The Problem We are Working to Solve



Where We've Been

In our first ten years, 2020 Mom was focused on introducing the problem and prevalence of maternal mental health disorders, and identifying and sharing barriers and pathways to change.

Our approaches included:

- engaging critical cross-sector stakeholders,
- coalescing non-profit partners
- identifying best practices
- creating tools to support change-agents
- launching and leading U.S. awareness campaigns
- centering mother's stories
- advancing the narrative from postpartum depression to maternal mental health
- laying the preliminary groundwork in federal and state policy

Where We're Headed

*In our next ten years,
2020 Mom will double down on implementation
of evidence-based and promising practices in the
healthcare system.*

Introduction

This strategic plan provides our vision for the future and a set of strategic tactics we will focus on, for the next four years.

The North Star

Explorers have used the **North Star** for navigational purposes for centuries. The north star is the brightest star and is located at the handle of the little dipper - it is visible to the naked eye.

A strategic plan, or framework, provides a map for an organization to reach its north star. It also acknowledges that great outcomes can come from clarity of what an organization seeks to achieve and:

- A framework for measurement,
- A process of testing ideas/projects against data,
- The need to purposefully iterate based on learnings,
- Clearly defining what is out of our scope, as to not distract us,
- The need to be anticipatory and responsive to our environment.

Our North Star; Our Vision

A health care system that routinely detects and treats maternal mental health disorders for every mother, every time.

Who We Serve

We put **mothers** at the center of our work.

We directly serve, through both “push and pull” strategies, cross-sector leaders & change agents in the U.S.:

- health care systems/providers
- insurers/plans and benefit administrators
- non-profits
- government

Our Values

Innovation & Creativity

Courageousness & Urgency

Collaboration & Partnership

Empathy & Understanding

Excellence & High Performance

What Makes Us Unique

Of the other organizations and leaders focusing on maternal mental health in the U.S., 2020 Mom is most known for understanding the complex health delivery system, including how change can be driven through:

- Integration of mental health care into medical health care
- provider payment strategy
- insurance/coverage benefit design, and
- provider networks

This understanding has helped 2020 Mom lead the way in identifying the most pressing barriers to screening and treatment.

We have also been applauded for **our ability to convene and communicate clearly**. We convene cross-sector stakeholders and we have a knack for translating unique stakeholder stories, challenges, and solutions to one another.

Our Approaches

We Will use the Pareto Principle

We are purposeful in strategically identifying where we can use our limited resources and our unique assets to have the greatest impact. Project Returns on Investments should be high - 20% effort equaling 80% impact.

We Will Plant Seeds and Create Domino Effects

We also wish to continue to “plant seeds” and create “domino effects” by creating new champions in existing and related fields, and we focus on solutions that are likely to trigger a positive chain reaction, accelerating implementation.

We Use Partners

Not only because it takes a village, but because we work with incredibly smart and innovative organizations. We are purposeful in using partners who serve our key stakeholders to co-create, pilot test, disseminate best practices, and scale change.

We Address Equity Head-On

We work with leaders in communities who have been marginalized to lift up their voices, ideas, and needs. We ask what these leaders, our partners, need and we back them by working together to pass policy, we support resource attainment, and we collaborate to pilot solutions.

We report how inequities lead to maternal mental health disorders and we share data that illuminates these inequities. We weave an equity lens into all of our projects and presentations.

We work to foster a universal understanding of the impact of racial and economic inequities on maternal mental health care and outcomes.

Definitions

How we define mother:

We use the term mother and mom to refer to those we ultimately seek to serve. We ultimately serve those who are pregnant, actively birthing, in the postpartum period, or parenting young children. We advocate for all mothers, whether pregnant, postpartum with a baby, or postpartum, and suffering from the loss of a baby. We advocate for all mothers regardless of sexual orientation and gender identity. We advocate for and work hard to bring the voices and needs of mothers facing racial and economic inequities to key stakeholders.

How we define treatment:

We define treatment broadly to include traditional treatments such as mental health therapy, medication, inpatient services, and other outpatient services.

We also define treatment to include preventive evidence-based interventions including peer supports and culturally responsive healing practices.

How we define providers:

We define providers as medical, mental health, and community professionals and facilities including clinics, residential programs, and hospital-based programs.

We believe that community-based organizations providing evidence-based care should be considered and reimbursed as healthcare providers.

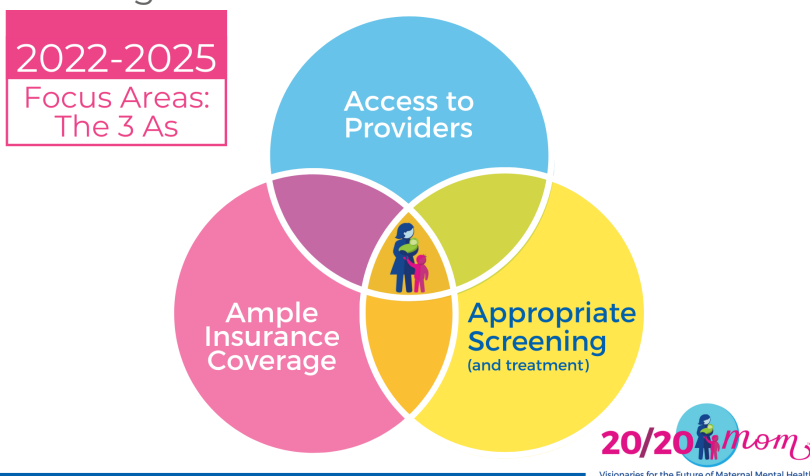
Our Focus Areas & Strategies

Our Focus Areas: The Three A's

Availability of Providers

Appropriate Screening

Ample Coverage



Availability of Providers

Goal: A broad range of qualified maternal mental health providers so evidence-based care options are readily available to mothers in the U.S.

Appropriate Screening

Goal: Obstetric providers adopt a standard protocol for screening, and they monitor screening rates and improved outcomes (reduced scores over time). We believe that screening should occur early so interventions and care can be implemented quickly.

Ample Coverage

Goal: Private insurers and Medicaid plans provide timely access to in-network providers and care without requiring mothers and those who support them to jump through hoops.

This includes the promotion of payment reform to support mental health integration in obstetric/primary care and addressing benefit coverage limitations, utilization management prohibitions, and provider network restrictions.

Our Strategies: The Four Cs

Craveable Content

Communities of Practice

Co-Laboratory & Co-Laborations

Commanding Action

Our Strategies, the 4 Cs

Our Approach

The perspective, stories, & voices of mothers anchor our work. We take complex information & transform it into programs that are approachable to the layperson.

Our How:

The 4 Cs

Craveable Content

Communities of Practice

Co-Laboratory & Co-Laborations

Commanding Action



These 4-C strategies support “turning the curve” or “moving the needle” in meeting our focus area goals.

Our Strategies: The Four Cs

Craveable Content

This strategy builds on 2020 Mom’s track record of curating and communicating cutting-edge content to those we serve. This content is centered around the development of issue briefs and “State of the State of Maternal Mental Health in America” reports.

Distribution of such content occurs through FORUM sessions, webinars, blogs, infographics (including graphic illustrations), storytelling, and social media memes and messaging.

Communities of Practice

We connect change agents working to solve the same problems or who work in similar settings to learn how to close gaps in maternal mental health care efficiently, and together.

These communities may include our fellowship programs and the further development of the maternal mental health LinkedIn groups, for example.

Certain communities of practice may center around the adoption of the 2020 Mom “Whole Mom” standard checklists.

Co-Laboratory & Co-Laborations

Our Co-Lab is where implementation science comes to life. We experiment and test ideas with partners to find solutions that work (and don’t work). We iterate on learnings and promote wide-scale adoption of solutions that work.

We collaborate with critical stakeholder organizations to support the adoption and scaling of solutions.

Commanding Action

Commanding Action means 2020 Mom will actively push for the adoption of solutions among stakeholder groups. Strategic tactics can include letters, petitions, legislative and legal solutions.

Focus Areas and Strategic Tactics in Detail:

Availability of Providers & Care

Goal:

A broad range of and adequate numbers and distribution of qualified maternal mental health providers and facilities, so evidence-based care is readily available in the U.S.

Sample Strategic Tactics

Craveable Content	Co-Laboratory & Co-Laborations
Issue briefs, webinars, surveys, and FORUM panels addressing workforce shortages, provider capacity, and novel treatments	<p>Develop and launch pilots to address the use of Certified Peer Support Specialists (CPSSs) in obstetric & community-based settings</p> <p>Develop and launch a pilot to address the use of CPSSs as care coordinators</p>
Communities of Practice	Commanding Action
Develop a hospital community of practice for the creation of inpatient and outpatient MMH programs with webinars and technical assistance and an online discussion board	<p>Introduce and pass state and federal legislation that addresses:</p> <ul style="list-style-type: none"> ● Creation of Inpatient, and Outpatient treatment programs ● Certification and adequate reimbursement for certified peer specialists providing mental health support ● Reproductive psychiatry and maternal mental health care specialist consultation services.

Appropriate Screening/Testing

Goal:

Obstetric providers adopt a standard protocol for screening for maternal mental health disorders, including risk for suicidality, and obstetric providers monitor screening rates for improved outcomes over time.

Sample Strategic Tactics

Craveable Content	Co-Laboratory & Co-Laborations
<p>Raise awareness of barriers to screening and solutions centered around the development of an issue brief and distributed through webinars, infographics, social media memes, the FORUM, etc.</p> <p>Provider surveys/reports about screening barriers and adoption rates of effective screening practices.</p> <p>Share validated screening tools and novel detection developments via blogs and website resource pages.</p>	<p>Promote the development, testing, and proliferation of an electronic screening tool with built-in logic that increases the efficiency, accuracy, and adoption rate of screening.</p> <p>Advocate for finalization and roll-out pending HEDIS maternal depression measure to monitor obstetric provider screening rates, and advocate as needed, for other interim solutions.</p> <p>Lead expert working groups in partnership with the International OCD Foundation to identify evidence-based screening tool(s) and more.</p> <p>Develop a pilot in partnership with the American Hospital Association to test and promote hospital adoption of the Zero Suicide framework for screening for and prevention of maternal suicide.</p>

Communities of Practice	Commanding Action
<p>Scale the adoption screening protocols among front-line providers through the Nonprofit State Policy Fellows Program and affiliate program</p> <p>Develop a Community of Practice, with webinars and technical assistance and an online discussion board for front-line screening providers, like obstetricians and ERs</p>	<p>Further develop and promote the use of model state MMH legislation, including screening mandates.</p>

Ample Coverage

Goal:

Private insurers and Medicaid plans provide ready access to providers and care. Including addressing coverage limitations, utilization management prohibitions, and provider network restrictions.

Sample Strategic Tactics

Craveable Content	Co-Laboratory & Collaborations
<p>Raise awareness about coverage issues and solutions in issue briefs, the FORUM, and supporting webinars, infographics, etc.</p> <p>Conduct Patient/Provider surveys about coverage barriers and issue findings in reports</p>	<p>Partner with CAQH (the organization that standardizes the insurer/health plan provider credentialing process) to promote the collection of / display of the PMH-C credential and race/ethnicity in provider directories</p>
Communities of Practice	Commanding Action
<p>Develop a Fellowship and/or a LinkedIn Group for Insurers addressing the Insurer MMH Best Practices (“Whole Mom Standards”)</p>	<p>Lead federal and state legislative policy to address:</p> <ul style="list-style-type: none"> ● The minimum level of low cost/no-cost visits and treatments ● Mandate Insurer / Health Plan Maternal mental health provider (PMH-C) network adequacy <p>Launch petitions aimed at individual insurers to reduce coverage limitations</p> <p>Support Individual Mothers Case Advocacy & Media Engagement</p>

Implementation of our Framework

This plan was approved by the Board of Directors in October 2021.

In 2022-2023 we will take the following steps to Implement this strategic plan.

Development of an implementation plan, that will include:

- a comprehensive resource needs assessment (people and technology strategies),
- creation of Key Performance Indicators (KPIs) by project
- development of a “Turn the Curve” Progress Score Card using a results-based accountability framework

This will include the roll out of infrastructure updates, including staffing and technology changes.

Revised 1/2023