



Detailed Results

The table below shows the aggregated data entered for each region, district, sub-district and community. Click on a location to drill down to view the statistics for the locations below it.

Individual PDMs

PDM

9 month PDM

Sort by

Location

[Back up to](#)

Accountability

Main Data

Region	100% Registration records	Sample size %	Sample size target	Main data provided #	Main data provided %	Total PDM data collected #	Total PDM data collected % (% of provided)	Δ #	Δ %	Sample size target %
Summary →	1,859,423	1.50	27,891	28,380	1.53	27,863	1.50 (98)	-517	-1.82	5.00
Ashanti	948,074	1.50	14,221	14,410	1.52	14,322	1.51 (99)	-88	-0.61	5.00
Brong Ahafo	624,111	1.50	9,362	9,548	1.53	9,378	1.50 (98)	-170	-1.78	5.00
Upper East	287,238	1.50	4,309	4,422	1.54	4,163	1.45 (94)	-259	-5.86	5.00

Detailed Results: Ghana 2018

The table below shows the aggregated data entered for each region, district, sub-district and community. Click on a location to drill down to view the statistics for the locations below it. You can also view [Accountability data](#)

At a glance **Detail**

PDM Sort by
 9 month PDM Location

Presence **Coverage** **Usage** **Condition** **Miscellaneous data** **Comments**

	AMF Nets										AMF Olyset nets												
	Total	Very Good		Good		Viable		Worn out		Rating	Total	Very Good		Good		Viable		Worn out		Rating	Total	Very Go	
Region		#	%	#	%	#	%	#	%	Rating		#	%	#	%	#	%	#	%	Rating		#	
Summary →	55,042	30,192	55	17,405	32	4,006	7	3,439	6	49	0	0	0	0	0	0	0	0	0	0	0	55,042	30,192
Ashanti	24,909	13,718	55	8,374	34	1,450	6	1,367	5	50	0	0	0	0	0	0	0	0	0	0	23,124	12,851	
Brong Ahafo	23,394	12,818	55	6,905	30	2,216	9	1,455	6	48	0	0	0	0	0	0	0	0	0	0	22,860	12,557	
Upper East	9,194	4,883	53	3,165	34	529	6	617	7	48	0	0	0	0	0	0	0	0	0	0	8,908	4,784	

show/hide key

Detailed Results: Ghana 2018

The table below shows the aggregated data entered for each region, district, sub-district and community. Click on a location to drill down to view the statistics for the locations below it. You can also view [Accountability data](#)

At a glance

Detail

PDM

Sort by

9 month PDM

Location

Presence

Coverage

Usage

Condition

Miscellaneous data

Comments

Region	Sleeping spaces			People		
	#	Covered	%	#	Covered	%
Summary →	73,336	58,056	79	135,471	115,593	85
Ashanti	34,016	25,789	76	64,786	50,321	78
Brong Ahafo	26,063	22,896	88	47,807	43,851	92
Upper East	13,257	9,371	71	22,878	21,421	94

Detailed Results: Ghana 2018

The table below shows the aggregated data entered for each region, district, sub-district and community. Click on a location to drill down to view the statistics for the locations below it. You can also view [Accountability data](#)

At a glance **Detail**

PDM Sort by
 9 month PDM Location

Presence Coverage Usage Condition Miscellaneous data Comments

Region	Households							AMF Nets												
	Target		#		%		Sleeping Spaces		People		Nets Received	Presence	Hung		Present not hung		Missing		Worn out/ not usable	
Summary →	28,380	27,870	98	73,336	2.63	135,471	1.85	71,676	90	50,679	71	14,438	20	3,796	5	3,439	5			
Ashanti	14,410	14,325	99	34,016	2.37	64,786	1.90	34,395	90	23,801	69	7,339	21	2,050	6	1,367	4			
Brong Ahafo	9,548	9,382	98	26,063	2.78	47,807	1.83	25,213	90	19,174	76	3,957	16	1,065	4	1,455	6			
Upper East	4,422	4,163	94	13,257	3.18	22,878	1.73	12,068	89	7,704	64	3,142	26	681	6	617	5			

show/hide key

Detailed Results: Ghana 2018

The table below shows the aggregated data entered for each region, district, sub-district and community. Click on a location to drill down to view the statistics for the locations below it. You can also view [Accountability data](#)

At a glance

Detail

PDM

9 month PDM

Sort by

Location

Presence

Coverage

Usage

Condition

Miscellaneous data

Comments

Region	Nets Used				Household used				People sleeping under nets								
	Correctly		Not Correctly		Correctly		Not correctly		Children under 5		Children 5 to 18		Pregnant women		Other adults		Total
	#	%	#	%	#	%	#	%	#	%	#	%	#	%	#	%	#
Summary →	56,076	100	0	0	22,438	100	0	0	20,950	18	38,082	33	1,774	2	54,787	47	115,593
Ashanti	24,845	100	0	0	11,220	100	0	0	8,767	17	16,867	34	623	1	24,064	48	50,321
Brong Ahafo	22,166	100	0	0	7,942	100	0	0	7,812	18	13,603	31	898	2	21,538	49	43,851
Upper East	9,065	100	0	0	3,276	100	0	0	4,371	20	7,612	36	253	1	9,185	43	21,421

show/hide key



Data Collection Accuracy

The numbers below are a measure of data quality, for both main PDM (100%) and re-visit (5%) data.

Key definitions for this page include:

- *Matching records: revisit records that form a matching pair with a PDM record, when automatic matching is attempted.*
- *Key data match: a matching pair has matching key data if the LLINs hung, number of sleeping spaces and whether the nets are used correctly are exactly the same in PDM and revisit records.*
- *Complete match: a matching pair has a complete match if, in addition, LLINs present not hung and the number of people in the household are exactly the same in PDM and revisit records.*

PDM

18 month PDM -

Summary

Matching Households	HIGH Accuracy	MEDIUM Accuracy	LOW Accuracy
845	456 (54%)	58 (7%)	331 (39%)

This table shows the proportion of matching pairs that fall into three categories of accuracy: high (complete match), medium (key data match only), and low (key data mismatch).

Detail

The results for a particular data clerk can be selected if desired.

All data clerks -

'Revisit' records entered	900
Total records entered	13,970
Percentage	6.4%
Matching records	845
Percentage of 'Revisit'	93.9%
Percentage of total	6.0%
Complete or Key Data only match	514
Percentage	60.8%

Matching type	Number of records	%
Complete Match	456	54.0%
Key Data Only Match	58	6.9%
Total Key Data Matches	514	60.8%
Key Data Mismatch	331	39.2%
Total # Matched Records	845	100.0%
No Matching Record Yet	55	
Total Records Entered	900	

Select a matching category

[Home](#) > [PDMs](#) > [Re-visit Analysis](#)

Data Collection Analysis

The table below shows the comparison of main data and revisit data for matched households. All differences are calculated as main data minus revisit data.

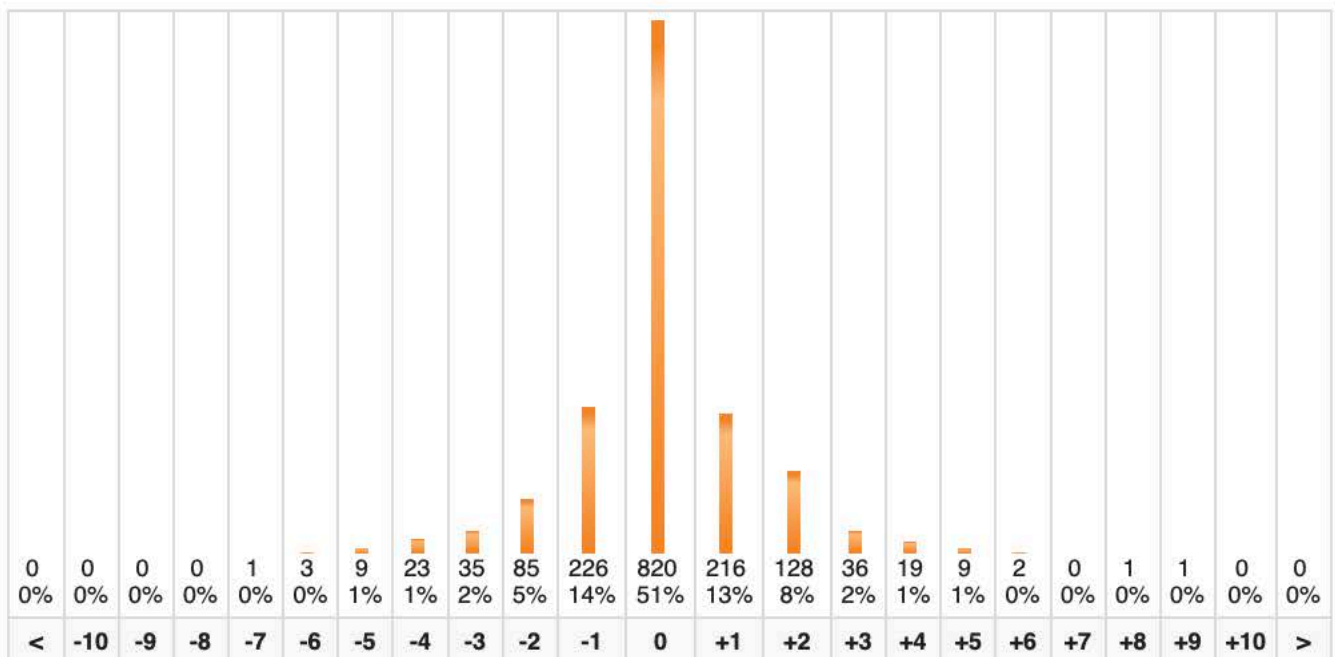
Click on a location to drill down to view the statistics for the locations below it.

PDM [Refresh](#)

Total records entered: 27,870 Revisit records entered: 1,768 (6.3%) Matching records: 1,614 (91.3%)

[Nets Hung](#)[Present Not Hung](#)[Sleeping Spaces](#)[Are Used Correctly?](#)[People In The Household](#)

Region	# HHs Matched	Nets Hung					
		Main	Revisit	Δ	%	σ 1	σ 2
Ashanti	857	1,598	1,532	+66	+4	0.9	1.43
Brong Ahafo	468	988	982	+6	+1	0.9	1.48
Upper East	289	559	564	-5	-1	0.9	1.49
	1,614	3,145	3,078	+67	+2	0.9	1.46



Region	<	-10	-9	-8	-7	-6	-5	-4	-3	-2	-1	0	+1	+2	+3	+4	+5	+6	+7	+8	+9	+10	>
Ashanti	0	0	0	0	0	2	6	12	17	42	107	439	124	74	19	8	5	2	0	0	0	0	0
Brong Ahafo	0	0	0	0	0	0	3	7	12	28	68	237	58	33	11	7	3	0	0	0	1	0	0
Upper East	0	0	0	0	1	1	0	4	6	15	51	144	34	21	6	4	1	0	0	1	0	0	0



Access

Data Entry

Registration

Distribution

PDMs

Search



Detailed Results

The table below shows the aggregated data entered for each region, district, sub-district and community. Click on a location to drill down to view the statistics for the locations below it.

Individual PDMs

PDM

9 month PDM -

Sort by

Location -

[Back up to](#)

Accountability

Re-visit data

Spares

Revisit rovided %	Revisit collected #	Revisit collected % (% of provided)	Δ #	Δ %	Spares provided #	Spares provided %	% of main data that is spares	Spares used	% of visited that is spares	% of target that is spares	% collected matched to HH list
6.67	1,764	6.22 (93)	-129	-6.81	9,030	0.49	31.82	1,287	4.6	4.6	99.7
6.62	912	6.33 (96)	-42	-4.40	4,585	0.48	31.82	746	5.2	5.2	99.8
6.26	533	5.58 (89)	-65	-10.87	3,038	0.49	31.82	342	3.6	3.7	99.5
7.71	319	7.21 (94)	-22	-6.45	1,407	0.49	31.82	199	4.8	4.6	99.6