

Detailed Results

The table below shows the aggregated data entered for each region, district, sub-district and community. Click on a location to drill down to view the statistics for the locations below it.

At a glance **Detail**

Arm: Any - PDM: 6 month PDM - PBO Nets: All Nets - Sort by: Location -

Presence	Coverage	Usage	Condition	Miscellaneous data	Comments	Accountability								
		AMF Nets								AMF OI				
		Very Good		Good		Viable		Worn out		Rating		Very Good		Good
Health sub-district	Total	#	%	#	%	#	%	#	%	Rating	Total	#	%	#
Summary →	42,928	26,598	62	11,999	28	3,681	9	650	2	48	11,302	7,326	65	2,992
1.1 Isingiro North	2,182	1,127	52	812	37	206	9	37	2	47	104	31	30	61
1.2 Rubabo	4,131	2,702	65	930	23	473	11	26	1	49	116	74	64	31
1.3 Ntugamo MC	406	276	68	108	27	17	4	5	1	50	264	179	68	69
1.4 Bumfumbira North	554	455	82	88	16	9	2	2	0	59	411	328	80	77
1.5 Buyanja	3,852	1,598	41	1,605	42	507	13	142	4	43	110	70	64	29
1.6 Rubanda West	3,172	2,208	70	799	25	135	4	30	1	52	52	37	71	15
1.7 Bukanga	2,287	1,072	47	993	43	185	8	37	2	46	1,265	567	45	581
1.8 Kibale	4,600	2,188	48	1,720	37	568	12	124	3	45	60	30	50	22
1.9 Rushenyi	2,863	2,237	78	495	17	92	3	39	1	54	111	80	72	22
1.10 Ndorwa East	747	483	65	134	18	124	17	6	1	48	686	427	62	131
1.11 Kyaka	4,861	3,324	68	887	18	545	11	105	2	48	399	286	72	46
1.12 Rwampara	4,116	3,178	77	846	21	89	2	3	0	58	2,936	2,298	78	596
2.1 Sheema North	84	74	88	7	8	3	4	0		66	77	67	87	7
2.2 Kabale MC	575	342	59	184	32	49	9	0		49	9	7	78	2
2.3 Kinkiizi East	1,087	620	57	386	36	71	7	10	1	49	23	11	48	11
2.4 Rukiga South	838	662	79	151	18	23	3	2	0	58	386	327	85	52
2.5 Igara - East	891	488	55	314	35	86	10	3	0	48	765	440	58	259
2.6 Fortportal MC	442	283	64	130	29	27	6	2	0	50	292	165	57	107
2.7 Kinkiizi West	1,045	779	75	167	16	92	9	7	1	53	22	12	55	7
2.8 Rujumbiura	1,382	726	53	443	32	185	13	28	2	46	1,130	592	52	372
2.9 Bufumbira East	125	96	77	27	22	1	1	1	1	56	3	3	100	0
2.10 Igara West	937	525	56	347	37	64	7	1	0	49	13	8	62	5
2.11 Kitagwenda	1,153	757	66	288	25	86	7	22	2	49	1,107	727	66	276
2.12 Bughendera	1,052	638	61	262	25	134	13	18	2	47	907	560	62	214

show/hide key

Detailed Results

The table below shows the aggregated data entered for each region, district, sub-district and community. Click on a location to drill down to view the statistics for the locations below it.

At a glance

Detail

Arm	PDM	PBO Nets	Sort by
Any -	6 month PDM -	All Nets -	Location -

Presence

Coverage

Usage

Condition

Miscellaneous data

Comments

Accountability

Health sub-district	Sleeping spaces			People		
	#	Covered	%	#	Covered	%
Summary →	56,837	49,351	87	102,511	86,869	87
1.1 Isingiro North	2,579	2,346	91	4,906	4,127	87
1.2 Rubabo	4,529	4,169	92	7,543	6,821	91
1.3 Ntugamo MC	596	462	76	975	822	85
1.4 Bumfumbira North	720	593	85	1,392	1,138	86
1.5 Buyanja	5,139	4,592	90	9,784	8,734	90
1.6 Rubanda West	3,881	3,300	89	7,149	5,761	85
1.7 Bukanga	3,200	2,537	75	5,875	4,225	74
1.8 Kibale	6,805	5,996	91	12,924	10,803	86
1.9 Rushenyi	4,364	3,599	87	7,874	5,946	81
1.10 Ndorwa East	834	756	91	1,474	1,223	83
1.11 Kyaka	7,083	6,443	90	14,157	12,451	90
1.12 Rwampara	5,798	4,445	74	8,337	7,036	85
2.1 Sheema North	129	109	85	211	153	75
2.2 Kabale MC	609	591	97	1,044	1,015	97
2.3 Kinkiizi East	1,278	1,105	88	2,294	2,395	100
2.4 Rukiga South	964	911	95	1,700	1,468	87
2.5 Igara - East	1,043	949	91	1,856	1,624	88
2.6 Fortportal MC	656	519	81	925	818	91
2.7 Kinkiizi West	1,258	1,094	87	2,170	1,950	92
2.8 Rujumbiura	1,628	1,380	87	2,856	2,440	87
2.9 Bufumbira East	132	134	100	274	226	85
2.10 Igara West	1,135	1,019	88	2,005	1,638	83
2.11 Kitagwenda	1,388	1,198	90	2,624	2,101	85
2.12 Bughendera	1,089	1,104	96	2,162	1,954	90

Detailed Results

The table below shows the aggregated data entered for each region, district, sub-district and community. Click on a location to drill down to view the statistics for the locations below it.

[At a glance](#)
[Detail](#)

Arm: Any - PDM: 6 month PDM - PBO Nets: All Nets - Sort by: Location -

[Presence](#)
[Coverage](#)
[Usage](#)
[Condition](#)
[Miscellaneous data](#)
[Comments](#)
[Accountability](#)

										AMF Nets							
Households		Sleeping Spaces		People		Nets Received		Presence		Hung		Present not hung		Missing		Worn out/ not usable	
jet	#	%	#	#/hh	#	#/ss	#	%	#	%	#	%	#	%	#	%	
68	21,100	82	56,837	2.69	102,511	1.80	57,198	96	47,055	82	8,100	14	1,393	2	650	1	
73	1,028	88	2,579	2.51	4,906	1.90	2,731	95	2,245	82	337	12	112	4	37	1	
63	1,585	85	4,529	2.86	7,543	1.67	4,412	99	3,739	85	609	14	38	1	26	1	
22	222	69	596	2.68	975	1.64	550	94	438	80	81	15	26	5	5	1	
99	278	93	720	2.59	1,392	1.93	730	98	567	78	151	21	10	1	2	0	
07	2,036	81	5,139	2.52	9,784	1.90	5,458	95	4,450	82	716	13	150	3	142	3	
47	1,567	77	3,881	2.48	7,149	1.84	3,991	96	3,129	78	717	18	115	3	30	1	
47	1,112	54	3,200	2.88	5,875	1.84	3,150	97	2,536	81	519	16	58	2	37	1	
59	2,638	86	6,805	2.58	12,924	1.90	7,052	96	5,786	82	950	13	192	3	124	2	
63	1,643	88	4,364	2.66	7,874	1.80	4,395	96	3,500	80	739	17	117	3	39	1	
99	296	99	834	2.82	1,474	1.77	798	99	745	93	44	6	3	0	6	1	
72	2,863	76	7,083	2.47	14,157	2.00	7,612	96	6,263	82	1,063	14	181	2	105	1	
10	1,646	102	5,798	3.52	8,337	1.44	4,764	98	4,033	85	633	13	95	2	3	0	
46	46	100	129	2.80	211	1.64	119	85	80	67	21	18	18	15	0	0	
76	220	80	609	2.77	1,044	1.71	587	100	573	98	14	2	0	0	0	0	
75	483	84	1,278	2.65	2,294	1.79	1,310	98	1,108	85	170	13	22	2	10	1	
14	385	93	964	2.50	1,700	1.76	998	99	869	87	121	12	6	1	2	0	
91	361	92	1,043	2.89	1,856	1.78	1,096	97	880	80	180	16	33	3	3	0	
22	214	66	656	3.07	925	1.41	631	96	511	81	92	15	26	4	2	0	
75	476	83	1,258	2.64	2,170	1.72	1,224	96	1,051	86	128	10	38	3	7	1	
44	589	91	1,628	2.76	2,856	1.75	1,671	97	1,394	83	222	13	27	2	28	2	
69	61	88	132	2.16	274	2.08	157	95	135	86	14	9	7	4	1	1	
60	388	84	1,135	2.93	2,005	1.77	1,097	97	960	88	99	9	37	3	1	0	
98	563	94	1,388	2.47	2,624	1.89	1,408	96	1,061	75	293	21	32	2	22	2	
37	400	92	1,089	2.72	2,162	1.99	1,257	95	1,002	80	187	15	50	4	18	1	

[show/hide key](#)

Detailed Results

The table below shows the aggregated data entered for each region, district, sub-district and community. Click on a location to drill down to view the statistics for the locations below it.

At a glance

Detail

Arm: Any - PDM: 6 month PDM - PBO Nets: All Nets - Sort by: Location -

Presence Coverage Usage Condition Miscellaneous data Comments Accountability

	Nets Used				Household used				People sleeping under nets						
	Correctly		Not Correctly		Correctly		Not correctly		Children under 5		Children 5 to 18		Pregnant women		Oth adu
Health sub-district	#	%	#	%	#	%	#	%	#	%	#	%	#	%	#
Summary →	47,127	98	1,176	2	19,196	98	492	2	17,837	21	30,298	35	1,787	2	36,947
1.1 Isingiro North	2,250	97	70	3	930	96	34	4	838	20	1,455	35	129	3	1,700
1.2 Rubabo	3,970	97	115	3	1,466	98	31	2	1,278	19	2,282	33	99	1	3,162
1.3 Ntugamo MC	461	100	1	0	211	100	1	0	188	23	223	27	17	2	394
1.4 Bumfumbira North	582	98	10	2	256	98	6	2	224	20	402	35	19	2	490
1.5 Buyanja	4,473	98	81	2	1,933	98	33	2	2,074	24	3,001	34	258	3	3,400
1.6 Rubanda West	3,175	98	63	2	1,368	97	37	3	1,141	20	2,064	36	83	1	2,470
1.7 Bukanga	2,409	98	37	2	1,015	98	21	2	1,035	24	1,526	36	109	3	1,550
1.8 Kibale	5,778	97	151	3	2,436	97	64	3	2,266	21	3,843	36	192	2	4,500
1.9 Rushenyi	3,342	98	65	2	1,385	98	29	2	1,120	19	2,066	35	115	2	2,640
1.10 Ndorwa East	729	97	23	3	284	97	8	3	241	20	410	34	25	2	540
1.11 Kyaka	5,944	96	280	4	2,547	96	114	4	3,009	24	3,925	32	299	2	5,210
1.12 Rwampara	4,277	98	88	2	1,521	98	29	2	1,366	19	2,532	36	133	2	3,000
2.1 Sheema North	109	100	0	0	38	100	0	0	36	24	34	22	1	1	80
2.2 Kabale MC	574	97	17	3	215	98	5	2	157	15	384	38	11	1	460
2.3 Kinkiizi East	1,094	99	6	1	457	99	4	1	389	16	879	37	17	1	1,110
2.4 Rukiga South	870	98	15	2	358	98	8	2	197	13	587	40	5	0	670
2.5 Igara - East	905	98	19	2	331	98	8	2	250	15	739	46	95	6	540
2.6 Fortportal MC	507	99	6	1	199	99	2	1	127	16	259	32	16	2	410
2.7 Kinkiizi West	1,029	98	24	2	432	98	11	2	326	17	647	33	24	1	950
2.8 Rujumbiura	1,312	97	37	3	541	97	14	3	440	18	903	37	36	1	1,060
2.9 Bufumbira East	124	96	5	4	53	93	4	7	34	15	90	40	0	0	100
2.10 Igara West	1,003	99	9	1	375	99	5	1	254	16	624	38	22	1	730
2.11 Kitagwenda	1,169	98	22	2	471	97	13	3	422	20	716	34	39	2	920
2.12 Bughendera	1,041	97	32	3	374	97	11	3	425	22	707	36	43	2	770

show/hide key

[Home](#) > [PDMs](#) > [Re-visit Analysis](#)

Data Collection Analysis

The table below shows the comparison of main data and revisit data for matched households. All differences are calculated as main data minus revisit data.

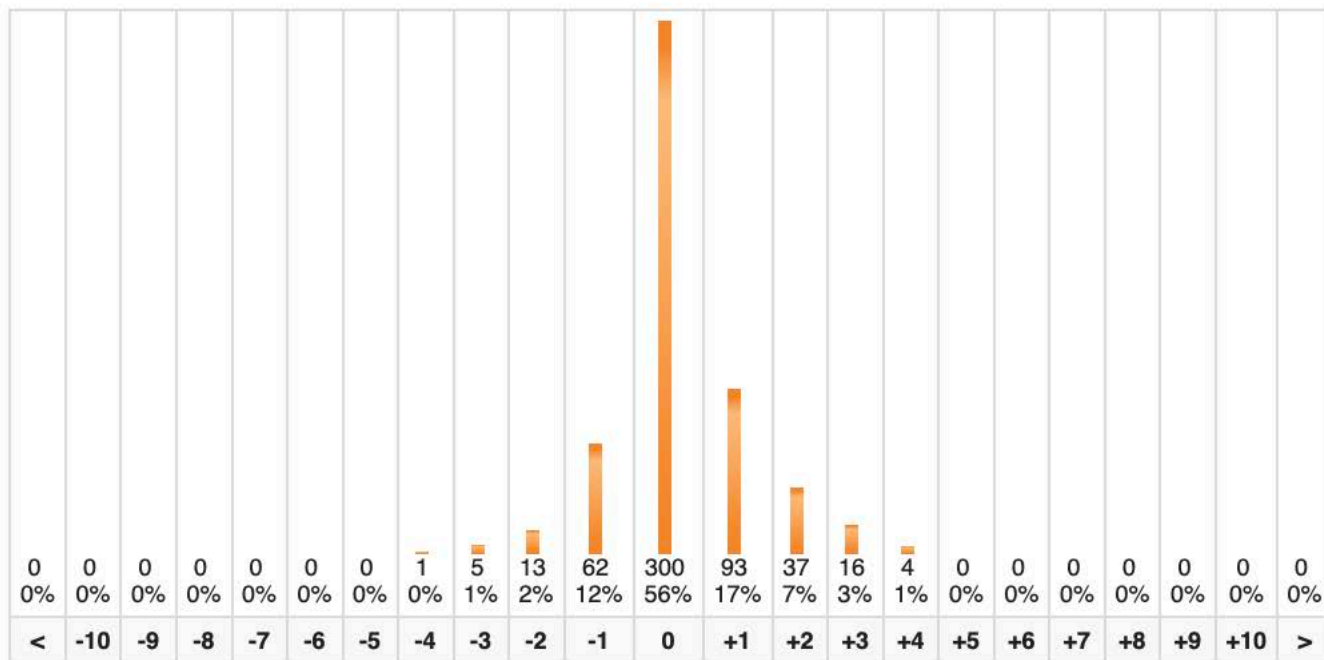
Click on a location to drill down to view the statistics for the locations below it.

Arm PDM [Refresh](#)

Total records entered: 16,914 Revisit records entered: 729 (4.3%) Matching records: 536 (73.5%)

[Nets Hung](#)[Present Not Hung](#)[Sleeping Spaces](#)[Are Used Correctly?](#)[People In The Household](#)

Region	# HHs Matched	Nets Hung					
		Main	Revisit	Δ	%	$\sigma 1$	$\sigma 2$
Western	536	1,220	1,092	+128	+10	0.6	1.08
	536	1,220	1,092	+128	+10	0.6	1.08



Region	<	-10	-9	-8	-7	-6	-5	-4	-3	-2	-1	0	+1	+2	+3	+4	+5	+6	+7	+8	+9	+10	>
Western	0	0	0	0	0	0	0	1	5	13	62	300	93	37	16	4	0	0	0	0	0	0	0



Home > PDMs > Re-visit Analysis

Data Collection Analysis

The table below shows the comparison of main data and revisit data for matched households. All differences are calculated as main data minus revisit data.

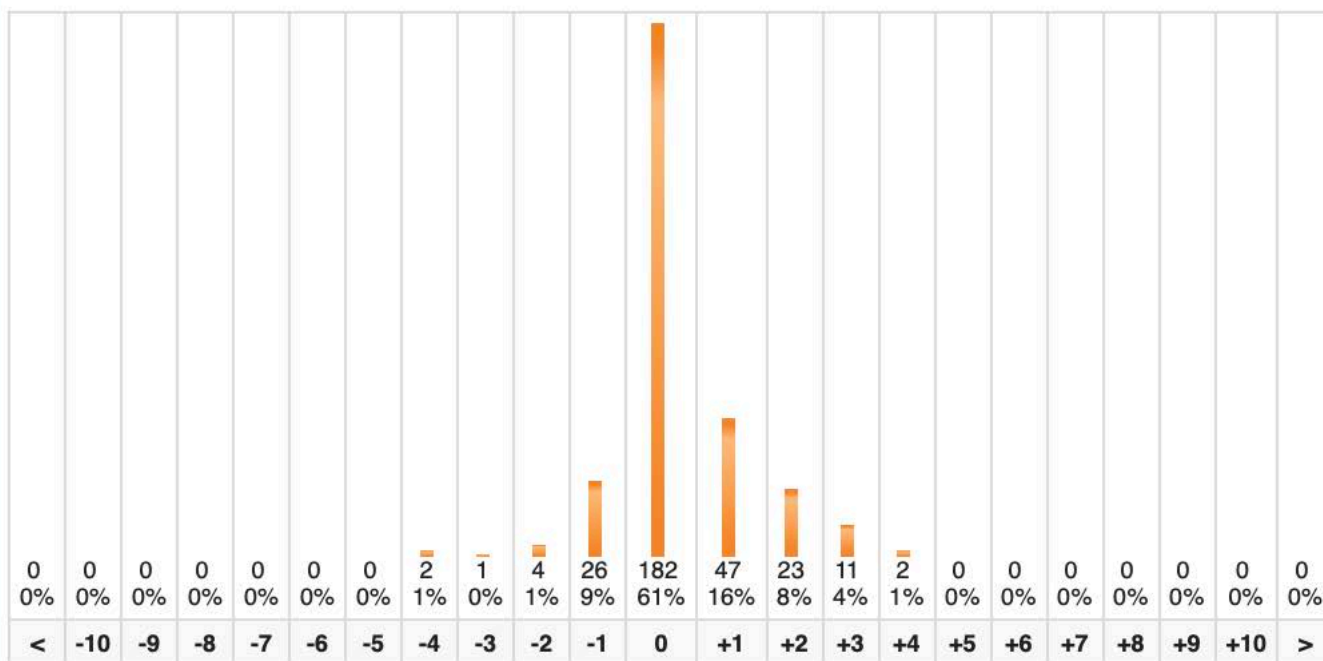
Click on a location to drill down to view the statistics for the locations below it.

Arm PDM [Refresh](#)

Total records entered: 4,186 Revisit records entered: 368 (8.8%) Matching records: 299 (81.3%)

[Nets Hung](#)[Present Not Hung](#)[Sleeping Spaces](#)[Are Used Correctly?](#)[People In The Household](#)

		Nets Hung					
Region	# HHs Matched	Main	Revisit	Δ	%	$\sigma 1$	$\sigma 2$
Western	299	742	651	+91	+12	0.6	1.09
	299	742	651	+91	+12	0.6	1.09



Region	<	-10	-9	-8	-7	-6	-5	-4	-3	-2	-1	0	+1	+2	+3	+4	+5	+6	+7	+8	+9	+10	>
Western	0	0	0	0	0	0	0	2	1	4	26	182	47	23	11	2	0	0	0	0	0	0	0