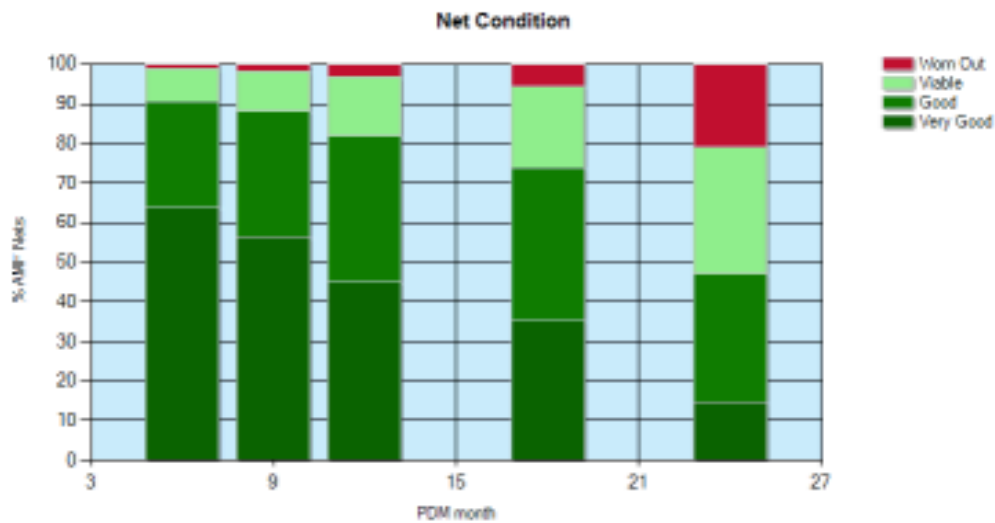
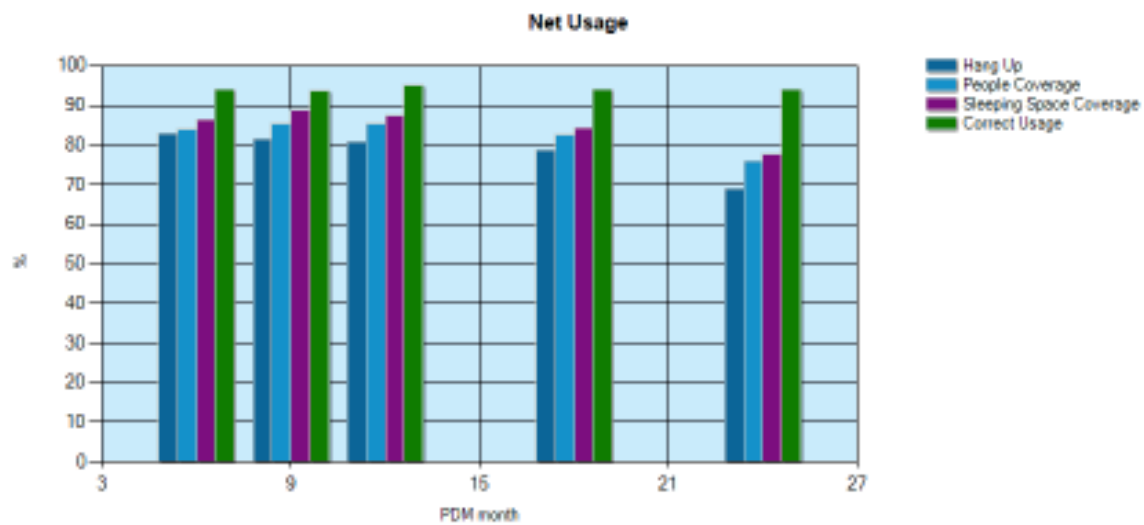
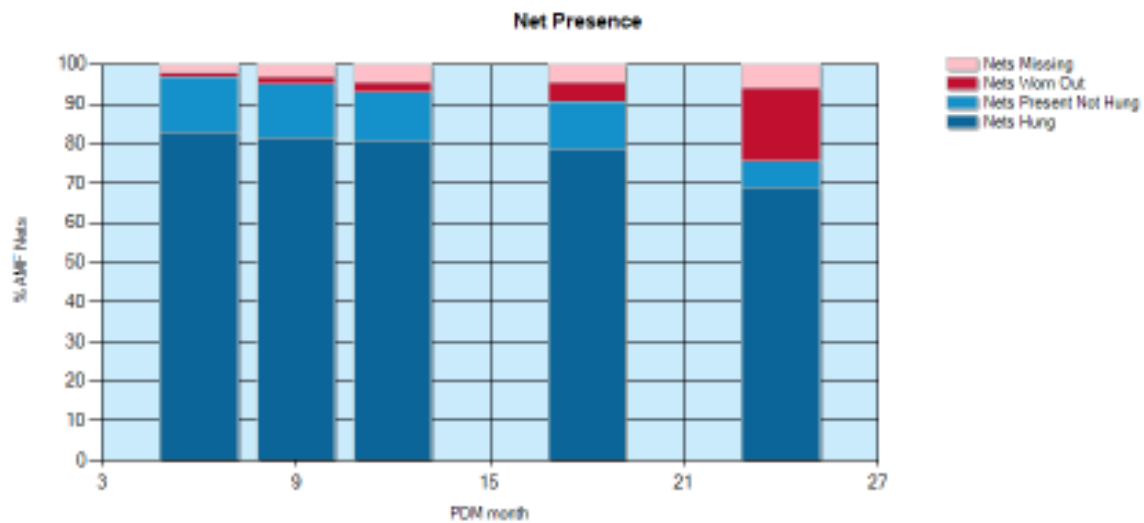


## Data Entered

The table below shows the aggregated data entered for each region, district, sub-district and community. Click on a location to drill down to view the statistics for the locations below it.

At a glance

Individual PDMs





Home > Results > PDM > Summary Results

## PDM - Summary Results

- AMF nets in Uganda were distributed between March 2017 and March 2018 across two regions - Western and Eastern - and across 124 health sub-districts (HSDs).
- Nets were distributed in four waves - wave 2, 3, 4a and 4b.
- Post Distribution Monitoring (PDM) is being performed across all 124 health sub-districts.
- In Eastern region (waves 2 and 3), PDMs are performed every 6 months with a sample size of 1.5%, starting at 12 months.
- In Western region (waves 4a and 4b), the scale and frequency of the PDMs is being varied to assess the potential impact on coverage rates over time.
- Of the 60 HSDs in waves 4a and 4b, 5 arms of 12 health sub-districts each have been randomly selected.

Hang up rates

Coverage

Nets worn out

The number of nets hung as a percentage of the available sleeping spaces.

Category	Month										
	0	3	6	9	12	15	18	21	24	27	30
Arm 1			70%		84%	83%		80%			
Arm 2			89%		85%	80%		86%			
Arm 3				86%				81%			
Arm 4				86%				79%			
Arm 5								82%			
Arm 6						84%	90%	79%	85%		73%
All			73%	86%	84%	84%	90%	79%	81%	85%	73%
Western			73%	86%	84%	83%		83%	81%		73%
Eastern					84%	90%	79%	85%			73%
PBO			70%	86%	84%	83%	88%	78%	81%	84%	71%
Non-PBO			92%	86%	85%	85%	92%	81%	81%	87%	76%
All PermaNet			73%	86%	84%	83%	90%	79%	81%	86%	74%
All Olyset				90%	85%	87%	89%	78%	84%	81%	65%



[Home](#) > [Results](#) > [PDM](#) > [Summary Results](#)

## PDM - Summary Results

- AMF nets in Uganda were distributed between March 2017 and March 2018 across two regions - Western and Eastern - and across 124 health sub-districts (HSDs).
- Nets were distributed in four waves - wave 2, 3, 4a and 4b.
- Post Distribution Monitoring (PDM) is being performed across all 124 health sub-districts.
- In Eastern region (waves 2 and 3), PDMs are performed every 6 months with a sample size of 1.5%, starting at 12 months.
- In Western region (waves 4a and 4b), the scale and frequency of the PDMs is being varied to assess the potential impact on coverage rates over time.
- Of the 60 HSDs in waves 4a and 4b, 5 arms of 12 health sub-districts each have been randomly selected.

### Hang up rates

### Coverage

### Nets worn out

The number of nets hung as a percentage of nets received.

Category	Month										
	0	3	6	9	12	15	18	21	24	27	30
Arm 1			85%		82%	82%		78%			
Arm 2			79%		84%	86%		85%			
Arm 3				81%				79%			
Arm 4				83%				80%			
Arm 5							80%				
Arm 6						77%	82%	75%	80%		70%
All			83%	81%	82%	80%	82%	75%	80%		70%
Western			83%	81%	82%	82%		78%	80%		69%
Eastern						77%	82%	75%	80%		70%
PBO			84%	83%	82%	78%	81%	73%	80%	88%	68%
Non-PBO			80%	80%	83%	82%	85%	77%	79%	85%	73%
All PermaNet			83%	81%	82%	80%	83%	76%	79%	82%	72%
All Olyset				85%	82%	79%	78%	69%	82%	85%	61%

Reasons for nets being present, but not hung

Reason	Total instances	%
Saved For future use	28,702	59
No hanging space	9,738	20
Unwilling To use	4,956	10
Net can be hot	2,424	5
Lack of hanging tools	1,917	4
It can catch fire	646	1

Reasons for nets not being present, other than worn out.

Reason	Total instances	%
Given To family member	17,618	73
Other	3,061	13
Stolen	2,545	10
Used For other purposes	1,031	4



Home > Results > PDM > Summary Results

## PDM - Summary Results

- AMF nets in Uganda were distributed between March 2017 and March 2018 across two regions - Western and Eastern - and across 124 health sub-districts (HSDs).
- Nets were distributed in four waves - wave 2, 3, 4a and 4b.
- Post Distribution Monitoring (PDM) is being performed across all 124 health sub-districts.
- In Eastern region (waves 2 and 3), PDMs are performed every 6 months with a sample size of 1.5%, starting at 12 months.
- In Western region (waves 4a and 4b), the scale and frequency of the PDMs is being varied to assess the potential impact on coverage rates over time.
- Of the 60 HSDs in waves 4a and 4b, 5 arms of 12 health sub-districts each have been randomly selected.

Hang up rates

Coverage

**Nets worn out**

The number of nets worn out as a percentage of nets received.

Category	Month										
	0	3	6	9	12	15	18	21	24	27	30
Arm 1			0%		1%	2%		5%			
Arm 2			1%		1%	1%		2%			
Arm 3				2%				5%			
Arm 4				1%				3%			
Arm 5								3%			
Arm 6					4%	4%	7%	8%		16%	
All			0%	2%	1%	3%	4%	7%	4%	8%	16%
Western			0%	2%	1%	2%		7%	4%		19%
Eastern					3%	4%	6%	8%			15%
PBO			0%	1%	1%	3%	5%	8%	4%	9%	17%
Non-PBO			1%	2%	2%	2%	3%	5%	5%	6%	13%
All PermaNet			0%	2%	1%	2%	4%	6%	4%	7%	14%
All Olyset				1%	2%	3%	5%	8%	5%	11%	22%