

WELCOME HOME

— APPLYING FOR —

STANFORD GRADUATE HOUSING



(Clockwise from left) Students in Study Room, GSB Jack McDonald; Munger Graduate Residences; EVGR Premium Two-Bedroom, Study Area; Escondido Village Graduate Residences; Kennedy Graduate Residences

2022 - 2023



thelottery.stanford.edu

TABLE OF CONTENTS

- Applying for Housing3
- Assignment Process and Priorities4-5
- COVID-19 Overview6
- On-Campus Graduate Housing Options6-15
- Residence Choices and Rates16-19
- Graduate Housing Map20-21
- Off-Campus Graduate Housing Options22-23
- Move-in Information24
- Campus Dining25-26
- Contact Information27



APPLYING FOR GRADUATE HOUSING

HOW TO APPLY

Apply online through Axess (axess.stanford.edu). Submit your application between **March 30, 2022** and **May 5, 2022** to participate in the first-round Lottery.

- New students are only guaranteed housing if they apply by the May 5 deadline, and select “assign me to any residence for which I am eligible” as their final application choice.
- Continuing students who are eligible to renew must do so by the May 5 deadline.

If you apply after the May 5 deadline, you will receive a sequential application number based on the date you submit your application.

You will need a **SUNet ID** to apply for housing. Instructions for obtaining a SUNet ID are included in your admission mailing. **Please set up your SUNet ID immediately after receiving your letter of admission.** You should be able to apply for housing in Axess within about 48 hours of creating your SUNet ID.

On your application, you will select the quarter you want your housing to start, your category of housing (single, couple without children or student with children), your requested move-in date and rank all your residence choices.

To improve your chances of being assigned to your desired housing, rank ALL apartment locations in the order you would like to be assigned until you have no further preferences.

If you need housing for summer 2022, you will need to submit a second application in Axess for just that quarter.

DISABILITY/MEDICAL ACCOMMODATIONS

If you, your spouse, partner or child have particular housing needs due to a documented disability or medical condition, you may participate in the Medical Accommodation Lottery, which takes place prior to the main Lottery. More information is available at rde.stanford.edu/studenthousing/medical-accommodations

- Register with the Office of Accessible Education by **April 5**. oaeconnect.stanford.edu
- Submit a housing accommodation request form with the Office of Accessible Education by **April 15**.
- Submit a housing application in Axess by **April 15**.

REASSIGNMENTS

After the Lottery assignments are announced, students may apply for reassignment, if they wish to change their assignment. An initial reassignment process will take place in July as part of the second round. If you are not reassigned in July, you can reapply for on-going reassignments that are made on a rolling basis each quarter after the demand from unassigned students is met. Your position in the rolling reassignment process is based on the date you apply.

If your family status changes, you should apply for housing in your new category as soon as you know about the change.

ROOMMATES IN SHARED HOUSING

If you are a single student assigned to a shared apartment, your roommate will be matched based on the roommate preferences you list on your application.

If you would like to live with specific friends, you are able to apply with a group of up to four students. If all group members have the same priority level and are the same gender, they are likely to be kept together.

rde.stanford.edu/studenthousing/applying-group-graduate-housing

For information on applying with friends of different genders: rde.stanford.edu/studenthousing/graduate-gender-neutral-housing

2022-23 HOUSING APPLICATION DEADLINES

QUARTER	ASSIGNMENT ROUND	APPLICATION DEADLINE	ASSIGNMENTS ANNOUNCED
Autumn	Medical accommodations	Now - April 5 to register with the OAE and April 15 to apply for housing and file OAE request	May 4
	First-round Lottery and renewal assignments	May 5	May 21
	Second-round assignments	July 5	July 23
	Rolling assignments	July 6 – October 28	July 25 – October 28
Winter	First-round assignments	October 28 (apply as early as possible beginning March 30)	November 19
	Rolling assignments	October 29 – February 10	November 21 – February 10
Spring	First-round assignments	February 10, 2023 (apply as early as possible beginning March 30)	March 4
	Rolling assignments	February 11 - May 5	March 6 - May 5

Submit your 2022-23 applications for all quarters in Axess beginning on March 30, 2022.



HOW ASSIGNMENTS ARE MADE

R&DE Student Housing uses a lottery to assign housing to graduate students. You are assigned according to (1) your assignment priority level, (2) a random lottery number and (3) your housing choices.

When the program gets to your priority level and lottery number, it will place you into the highest available residence on your preference list. If all of the residences you have listed are full, you will be assigned by your final choice.

If you select “assign me to any residence for which I am eligible,” you could be assigned to any on-campus housing option except Munger, the GSB Residences and the premium studios for single graduate students, due to their price. The system will assign you to a residence that is left over at the end of the process.

If you select “assign me only to the residences I have listed,” you will not be assigned if we cannot assign you to a residence you have listed.

In either case, we strongly recommend that you rank as many choices as possible to improve your chance of being assigned by your preferences.

FIRST-YEAR GRADUATE STUDENTS

If you are enrolled in a Stanford graduate degree program for the first time, housing is guaranteed for your first year if

- You apply by the Lottery deadline – **May 5, 2022**.
- You select “assign me to any residence for which I am eligible” as your final application choice. (Students selecting this choice will not be assigned to Munger, the GSB Residences, off-campus options or the premium studios for single students unless they have specifically listed them.)

If you have restricted housing choices, and you are not assigned in the first round, you will still be considered with high priority for housing before continuing students.

If you apply after the deadline, you will have high priority and your position on the list will be determined by the date you apply.

Your first-year assignment priority is only effective during your first academic year of graduate study. It cannot be used later, even if you are admitted to an additional degree program.

ORDER FOR ASSIGNING STUDENT HOUSING

1. Student staff and students needing medical accommodations.
2. Students living on campus with medium priority who are renewing their spring housing for the next year.
3. Students living in subsidized off-campus housing with medium priority who apply for the same category.
4. Guaranteed first-year students who applied by the deadline and selected “assign me to any residence for which I am eligible” as their final application choice.
5. First-year students with high priority who limited their housing choices or applied after the Lottery deadline.
6. Students with medium priority who are not renewing.
7. Students with low priority.
8. Students with no priority.
9. Non-matriculated students.

Students beginning a second graduate degree program are considered continuing students. Co-terminal students are considered continuing students with a low priority and are not guaranteed housing.

CONTINUING STUDENTS

After Your First Year

Your options after your first year are based on your housing priority. (See chart on next page.)

- Students with medium priority who want to stay in the same apartment may be able to renew annually and bypass the first-round Lottery if they are living in a full-year building and keep their summer contract.
- Students who want to change residences or who are not eligible to renew their housing should join the first-round Lottery.

PRIORITY BY DEGREE

Random Lottery Number

The best numbers (lowest numbers) are randomly assigned to students who apply for housing by the Lottery deadline. Students who miss the first-round deadline will receive a sequential number based on the date their application is submitted.

Assignment Priority is determined by:

1. Your student status (first-year or continuing graduate student)
2. Your degree program (PhD, master’s, etc.)
3. The total number of years you have lived in graduate housing

PROGRAMS	HOUSING CATEGORY	YR 1	YR 2	YR 3	YR 4	YR 5	YR 6	YR +7
Doctoral degree candidates	All categories	G/H	M	M	M	M	M	N
Medical students in the MD program	All categories	G/H	M	M	M	M	N	N
Law students in the JD program	All categories	G/H	M	M	N	N	N	N
Coterminal students	All categories	L	L	N	N	N	N	N
Master’s students	Single graduate	G/H	L	N	N	N	N	N
	Couple without children	G/H	L	N	N	N	N	N
	Student with children	G/H	M	N	N	N	N	N
Non-matriculated students	All categories	P	P	P	P	P	P	P

CHART LEGEND

G/H = High Priority | Can apply through Lottery

- Students in the first year of their first graduate degree program at Stanford (does not include coterminal students) are guaranteed housing (G) if they apply by the Lottery deadline and are willing to accept any assignment.
- First-year students who miss the deadline or are not willing to accept any assignment are no longer guaranteed, but are given a high priority (H) and are considered for housing before students with lower priority levels.

M = Medium Priority | Can renew if in on-campus housing

- Continuing doctoral students with priority years who have already had a year of guarantee or high priority.
- Master’s students applying for a second year of housing who are living in students with children housing.

L = Low Priority | Cannot renew but can apply through Lottery

- Master’s students applying for a second year of housing who are living in single graduate or couple without children housing.
- Coterminal students in the first two years of eligibility for graduate housing who have used their undergrad housing guarantee.

N = No Priority | Cannot renew but can apply through Lottery

- Students who have used their housing priority years.

P = Non-matriculated Priority | Cannot renew but can apply through Lottery

- Non-degree seeking students who are enrolled as postdocs or visitors.

Regardless of their priority level, we are strongly encouraging all graduate students and postdocs who need housing to apply for the Lottery.

Special Off-campus Priority for Lottery 2022

Doctoral students living in the off-campus subsidized apartments who are applying for the same category and who have medium priority years remaining will have a special priority to on-campus housing and their off-campus residence, if available in the 2022 Lottery. They will be assigned ahead of first-year students.

COVID-19 OVERVIEW

The health and well-being of Stanford students is R&DE's highest priority. Since the onset of the COVID-19 pandemic, we have followed the guidance of government and university health experts and closely observed the evolving mandates, so that we can continue to safely provide housing and dining services for students.

R&DE is prepared to support students in this ever-changing environment, including the identification of quarantine and isolation spaces, should we need them. This is especially important with students arriving on campus from all over the world.

As of spring 2022, the public health circumstances have improved and some of the earlier restrictions have been lifted. For example, dining halls no longer offer to-go boxes. Students may now dine with reusable dishes, glasses and flatware and indoor dining is once again available.

The [COVID-19 Guidance for Students website](#) and [Health Alerts](#) and [Grad Updates](#) provide up-to-date information about vaccination and testing requirements, what to do if you or a close contact contracts COVID and other important topics. The university notifies students by email when there are changes to the requirements.

ON-CAMPUS GRADUATE HOUSING OPTIONS

Graduate Housing

Stanford offers housing to single students, students with domestic partners of any gender and students with children. All housing is smoke-free. Pets are not allowed, although some animals are approved for medical reasons.

More information about housing options can be found at rde.stanford.edu/studenthousing/graduate-housing-options. The floor plans and photos in this section are representative samples. Your apartment may have variations.

Residential Renovations

The goal of R&DE's Maintenance Operations & Capital Projects (MCP) team is to ensure student comfort and safety in their campus homes. MCP provides routine maintenance and system upgrades year-round, with minimal disruption to students. However, some projects are so extensive that they can only be completed in unoccupied apartments. In these cases, students are relocated (temporarily or permanently) to other apartments/buildings to facilitate the renovations. R&DE will provide more detailed information about the project in the academic year before the scheduled start date. You can find information about upcoming projects through the 2027-2028 academic year on the [R&DE website](#).

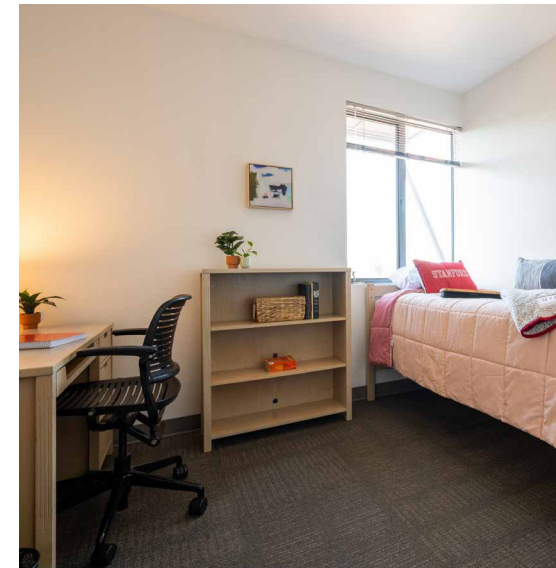
In Every Apartment

Students can expect bedroom furnishings such as a bed, dresser, nightstand, desk, desk chair, and a closet. Kitchens are generally equipped with refrigerator/freezer, electric stove, oven and sink with garbage disposal. Living spaces are commonly furnished to include sofa, coffee table, dining room table with chairs, small counter-height table with chairs, or counter with chairs.

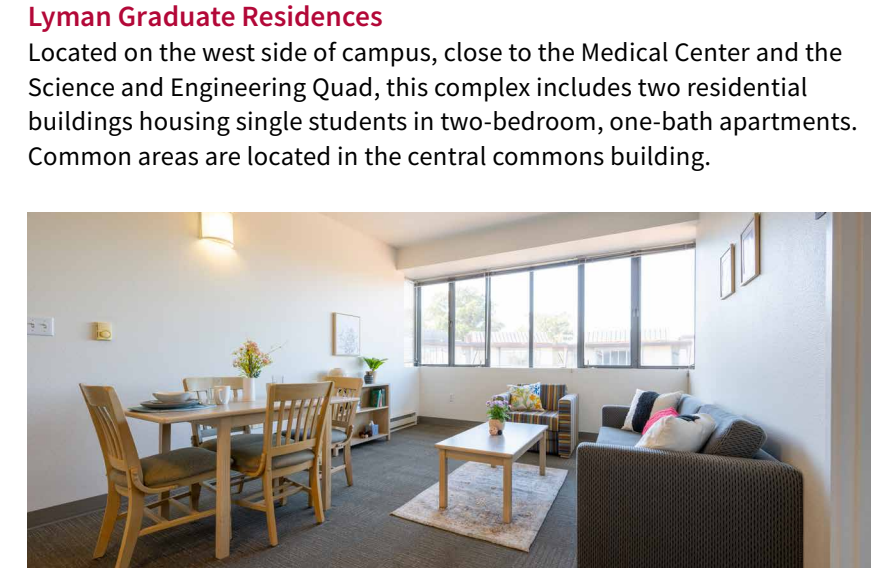
Residents pay no additional charge for utilities (water, heat, electricity, garbage, sewer). WiFi and long-distance VoIP calling is available in on-campus residences and is included in your technology fee (\$81/quarter).



Escondido Village Graduate Residences, Exterior



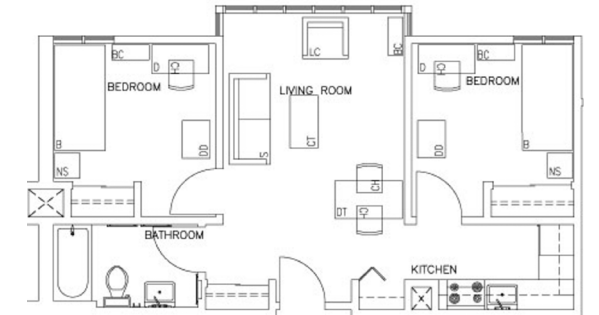
Lyman Graduate Residence, Bedroom



Lyman Graduate Residence, Living Room



Lyman Graduate Residences, Exterior



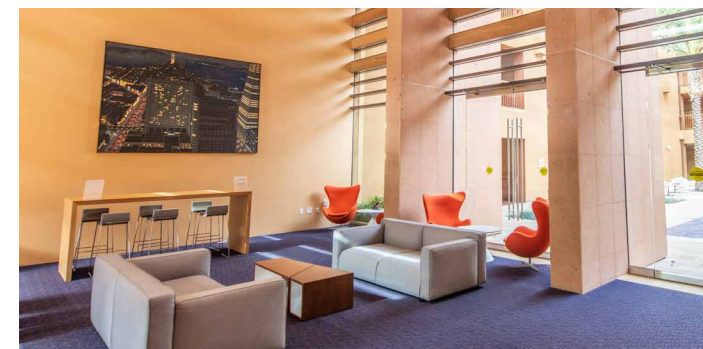
Lyman Graduate Residences, 2-Bedroom/1-Bath

GSB Residences

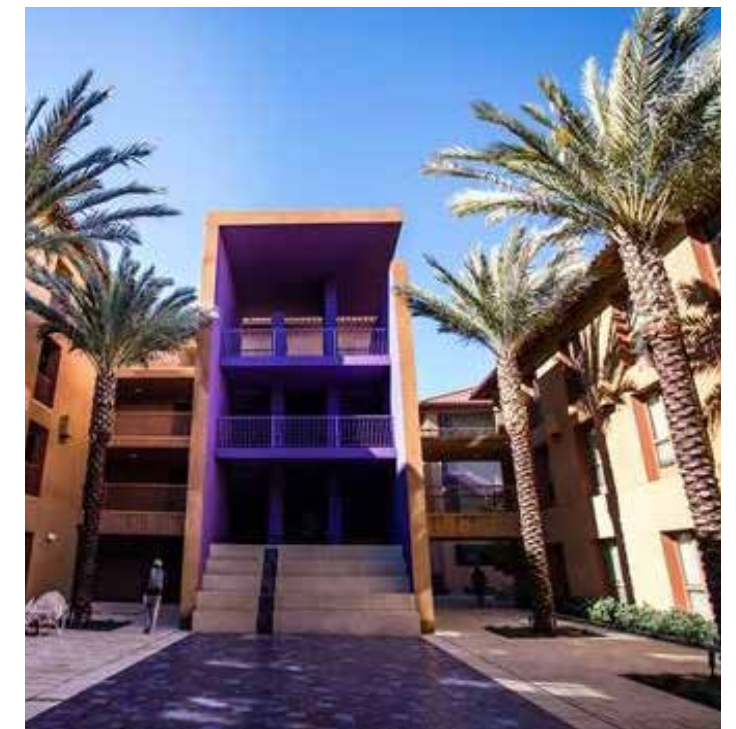
Stanford's Graduate School of Business (GSB) manages the GSB Residences, located across from the GSB on Jane Stanford Way.

Jack McDonald Hall and Schwab Residential Center offer studio apartments with shared kitchens. Most spaces are assigned to first-year GSB students.

Note: The GSB Residences are not automatically included if you indicate on the housing application that you are willing to be assigned anywhere.



GSB Residences, Jack McDonald Hall, Commons Interior



GSB Residences, Exterior

Munger Graduate Residence

Conveniently located, Munger's five apartment buildings are adjacent to the Law School and a short walk from White Plaza.

Studios and a limited number of one-bedroom apartments are available to couples. Studios, two- and four-bedroom apartments are available for single graduates. Each student has a private bedroom and bathroom. Premium studios are large enough to accommodate a dining table and chairs, while the standard studios have an eat-in counter with stools. Law students have priority for assignment for 50% of Munger spaces.

The Market at Munger, in Jacobson-Sorensen Hall, offers fresh produce, grab-and-go meals and a number of grocery and household items.



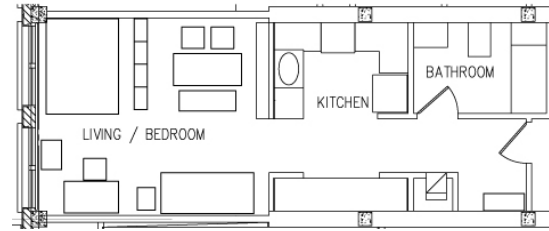
Munger Graduate Residence, Exterior



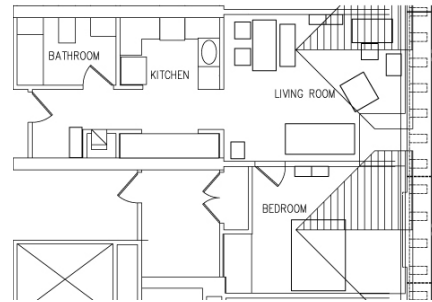
Munger Graduate Residence, Kitchen and Living Room



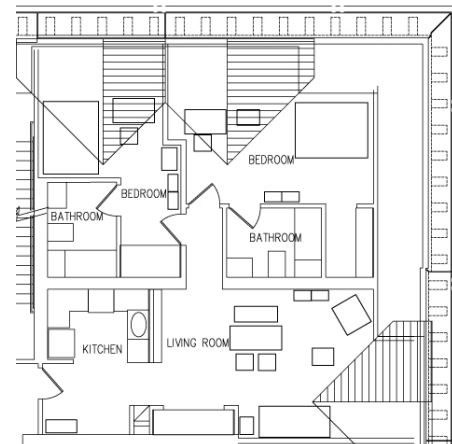
Munger Graduate Residence, Studio Apartment



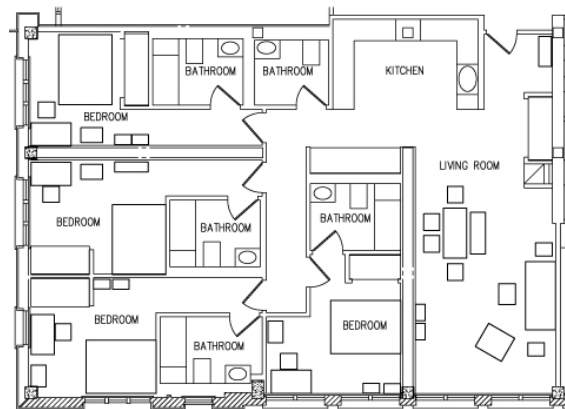
Munger Graduate Residence, Premium Studio/1-Bath



Munger Graduate Residence, 1-Bedroom/1-Bath



Munger Graduate Residence, 2-Bedroom/2-Bath

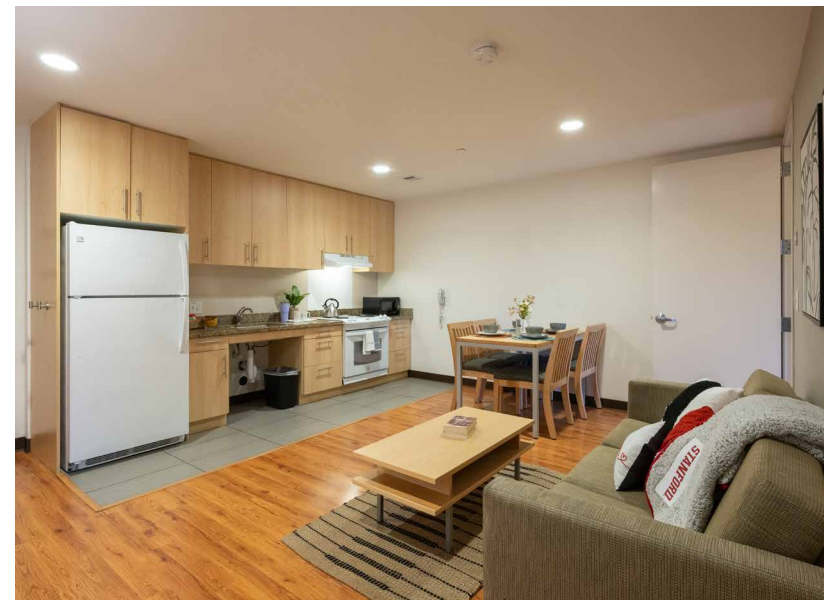


Munger Graduate Residence, 4-Bedroom/5-Bath

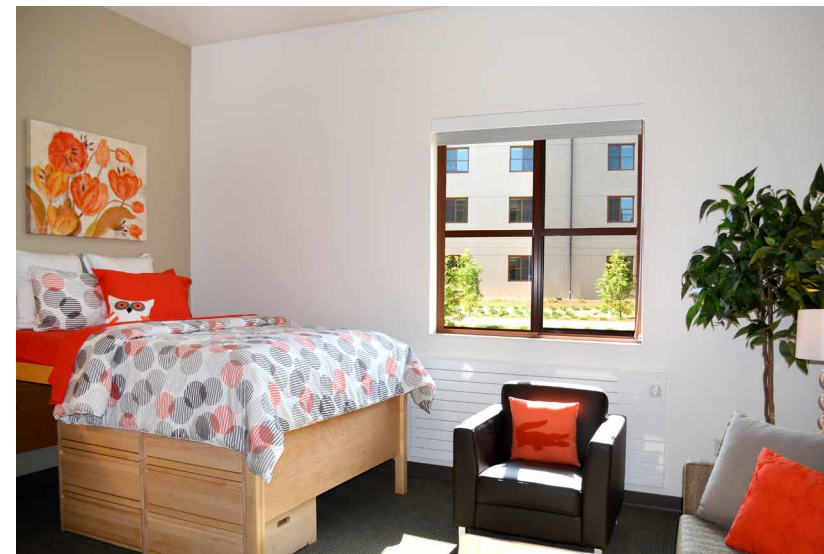
Note: Munger is not automatically included if you indicate on the housing application that you are willing to be assigned anywhere.



Kennedy Graduate Residences, Exterior



Kennedy Graduate Residences, Kitchen and Living Room

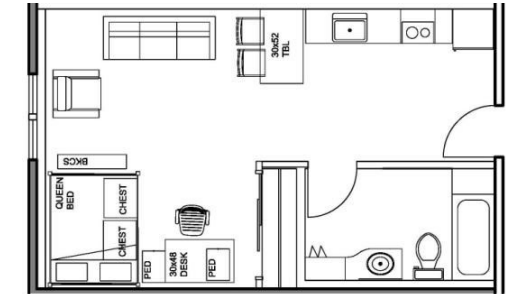


Kennedy Graduate Residences, Bedroom

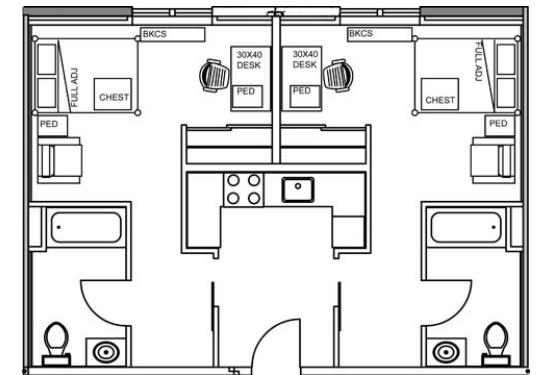
Kennedy Graduate Residences in Escondido Village

Apartments include premium two-bedroom, two-bath apartments with shared living room and kitchen, junior two-bedroom, two-bath units with shared kitchens and premium studios for single graduate students. Premium studios are available to couples and single parents with one child. Each student has a private bedroom and bathroom.

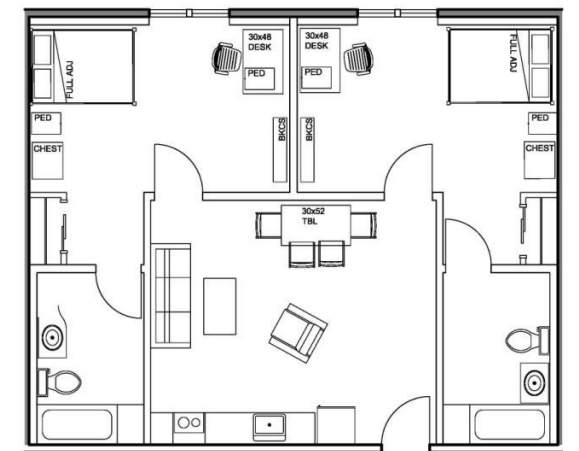
Note: The premium studios are not automatically included for single graduates if you indicate on the housing application that you are willing to be assigned anywhere.



Kennedy Graduate Residences, Premium Studio/1-Bath



Kennedy Graduate Residences, Junior 2-Bedroom/2-Bath



Kennedy Graduate Residences, Premium 2-Bedroom/2-Bath

Escondido Village & Escondido South Low-Rises

Home to couples, families and single students in one- to four-bedroom apartments, these units are located in one- and two-story low-rise apartments arranged around grassy fields, picnic areas and communal courtyards. The two-, three-, and four-bedroom apartments have fenced in patios that open on to gated play areas. The one-bedroom, one-bedroom with den and studio apartments do not have fenced in patios. Couples without children are assigned to one-bedrooms and a limited number of one-bedrooms with den and two-bedroom apartments. Single students are assigned to two- and three-bedroom apartments with a private bedroom and shared bathroom, kitchen and living room. There are only two four-bedroom apartments available and are assigned to families.

All apartments in Escondido South have two stories. Escondido Village has a combination of one- and two-story apartments that are assigned interchangeably.

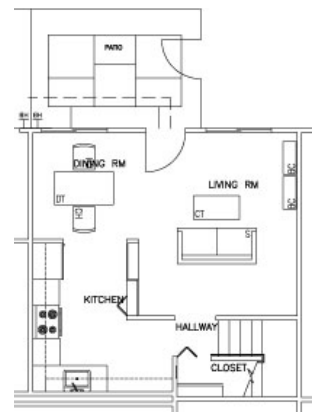
The low-rise apartments are slated to go through a multi-year renovation. Residents should expect to relocate to a renovated low-rise apartment when their building is due for construction.



Escondido South Two-story Low-Rises, Exterior



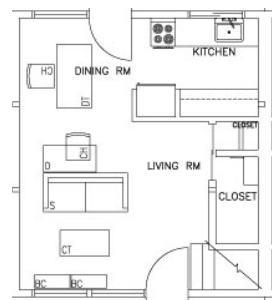
Escondido Village One-story Low-Rises, Exterior



Escondido Village & South Low-Rises, 2-Bedroom/1-Bath - First Floor



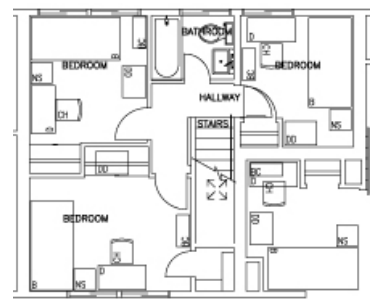
Escondido Village & South Low-Rises, 3-Bedroom/1-Bath - First Floor



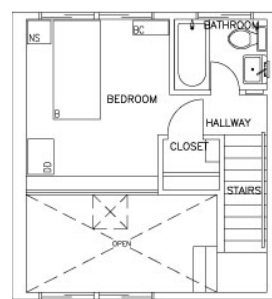
Escondido Village Low-Rises, 1-Bedroom/1-Bath - First Floor



Escondido Village & South Low-Rises, 2-Bedroom/1-Bath - Second Floor



Escondido Village & South Low-Rises, 3-Bedroom/1-Bath - Second Floor



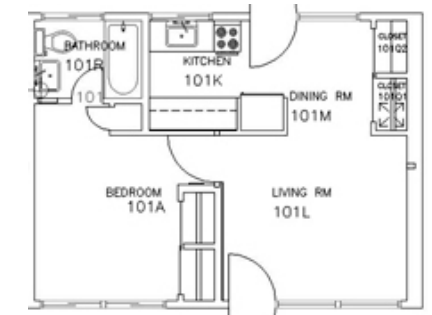
Escondido Village Low-Rises, 1-Bedroom/1-Bath - Second Floor



Escondido Village Low-Rises, Bedroom



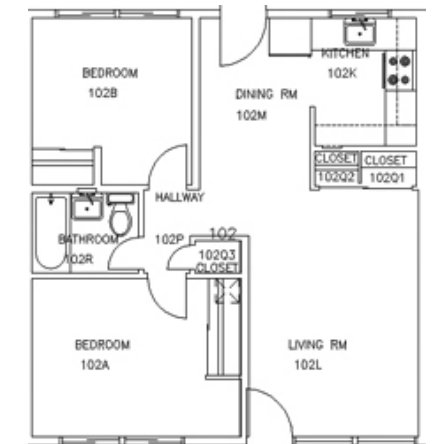
Escondido Village Low-Rises, Living Room



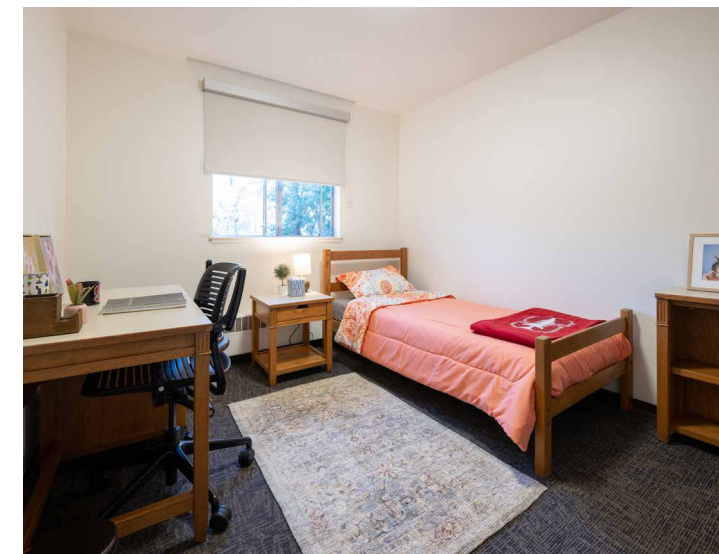
Escondido Village Low-Rises, 1-Bedroom/1-Bath



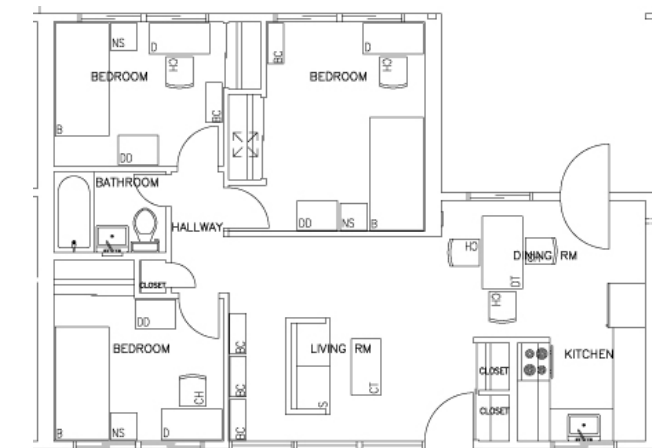
Escondido South Low-Rises, Living Room



Escondido Village Low-Rises, 2-Bedroom/1-Bath



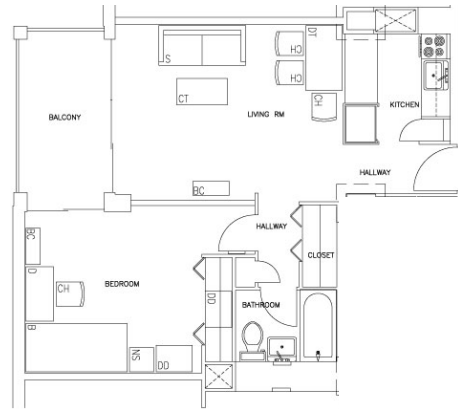
Escondido South Low-Rises, Bedroom



Escondido Village Low-Rises, 3-Bedroom/1-Bath



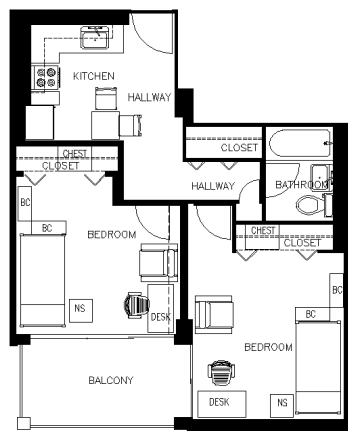
Escondido Village Mid-Rises, Exterior



Escondido Village Mid-Rises, 1-Bedroom/1-Bath for Couples without Children (except McFarland)



Escondido Village Mid-Rises, 1-Bedroom/1-Bath Compact for Couples without Children in McFarland



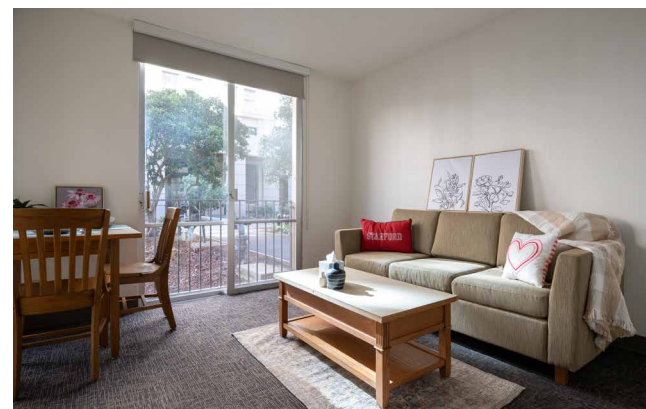
Escondido Village Mid-Rises, 2-Bedroom/1-Bath for Single Students in McFarland

Escondido Village Mid-Rises and High-Rises
 Five eight-story mid-rise apartment buildings — Abrams, Barnes, Hoskins, Hulme and McFarland — offer one-bedroom apartments for couples without children. Each apartment has a sliding glass door that opens onto a balcony. In McFarland, all units have been remodeled to enclose the kitchen and convert the living room into a second bedroom with a large closet and a locking bedroom door. McFarland is assigned as a junior two-bedroom, one-bath apartment for two single graduate students or as a one-bedroom, one-bath compact for a couple. Lobbies, lounges and other common spaces provide areas for social activities.

Escondido Village also includes two 12-story towers, Blackwelder and Quillen. Each building has 110 junior two-bedroom, one-bath apartments shared by two single students. Common spaces in each building include lounges, barbecue and picnic areas, computer clusters and a piano practice room. **Blackwelder is slated to close for major renovation from August 2022 to July 2023. Residents will have priority to relocate to other housing options. Quillen is slated to close for renovation from August 2023 to July 2024. Quillen residents will relocate to the renovated Blackwelder apartments.**



Escondido Village Mid-Rises, Bedroom



Escondido Village Mid-Rises, Living Room



Escondido Village High-Rises, Junior 2-Bedroom/1-Bath Apartment



Escondido Village High-Rises, Exterior



Escondido Village High-Rises, Interior



Escondido Village High-Rises, Interior

Escondido Village Studios

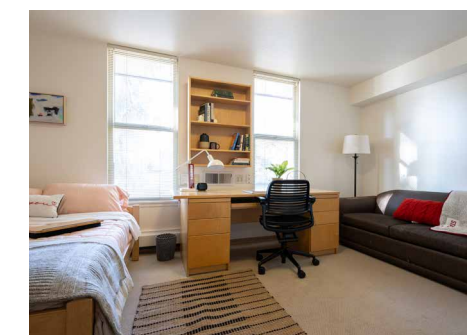
Six four-story buildings in Escondido Village accommodate 834 graduate students in single student and couples without children studio apartments. Each studio provides about 325 square feet of space, and combines living and sleeping quarters that include a kitchen and private bathroom. Common areas in each building include lounges, computer clusters and laundry facilities.



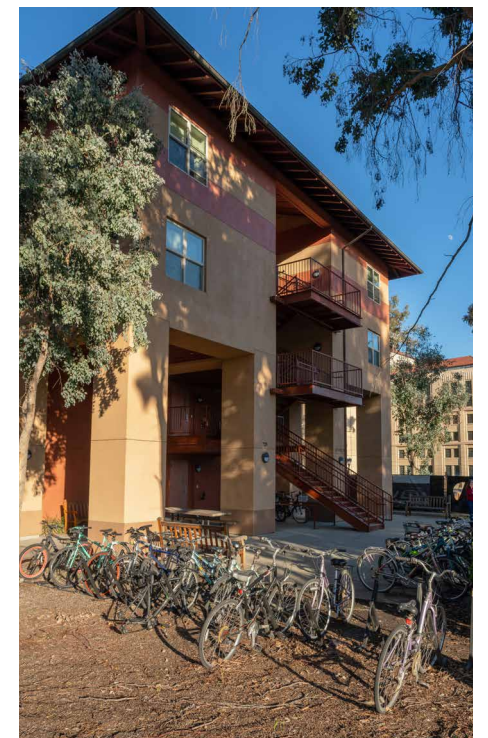
Escondido Village Studios, Kitchen



Escondido Village Studios, 1-Bath



Escondido Village Studios, Living-Bedroom

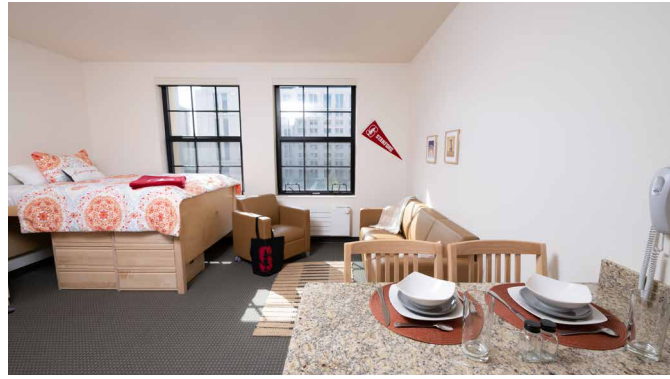


Escondido Village Studios, Exterior

Escondido Village Graduate Residences

Escondido Village Graduate Residences (EVGR), which opened in 2020, is Stanford’s newest on-campus residential community. Apartments include premium two-bedroom, two-bath apartments with shared living room and kitchen, junior two-bedroom, two-bath units with shared kitchens and premium studios. Each student has a private bedroom and bathroom. Single graduates are assigned to all options and couples are assigned to premium studios and a limited number of premium two-bedroom apartments.

Note: The premium studios are not automatically included for single graduates if you indicate on the housing application that you are willing to be assigned anywhere.



Escondido Village Graduate Residences, Premium Studio



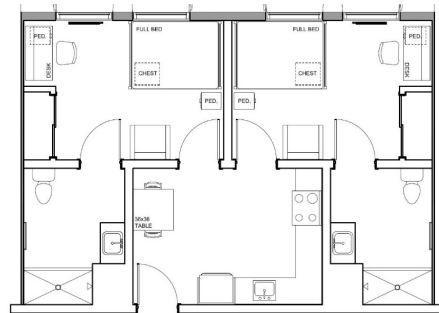
Escondido Village Graduate Residences, Kitchen



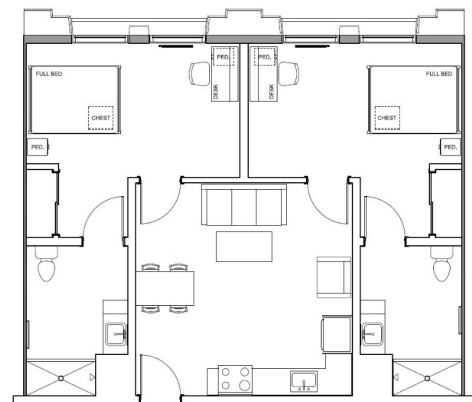
Escondido Village Graduate Residences, Bedroom



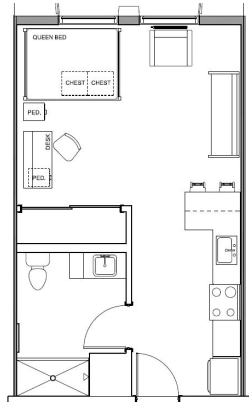
Escondido Village Graduate Residences, Exterior



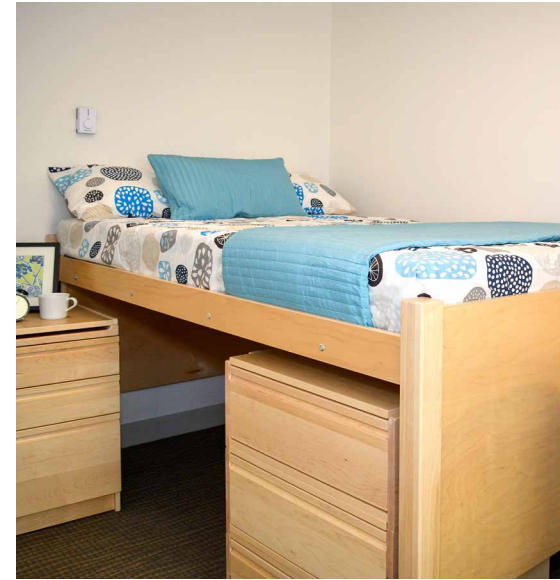
EVGR, Junior 2-Bedroom/2-Bath



EVGR, Premium 2-Bedroom/2-Bath



EVGR, Premium Studio/1-Bath



Rains, Bedroom



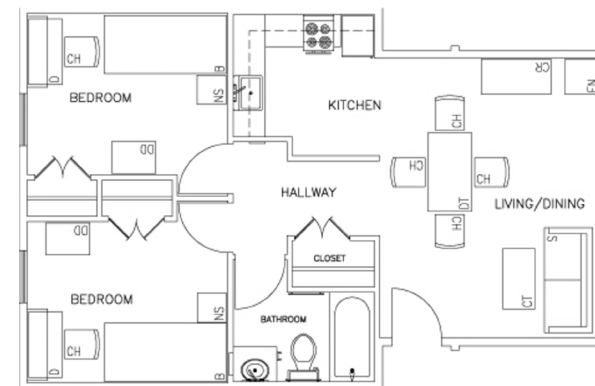
Rains, Living Room

Rains Houses

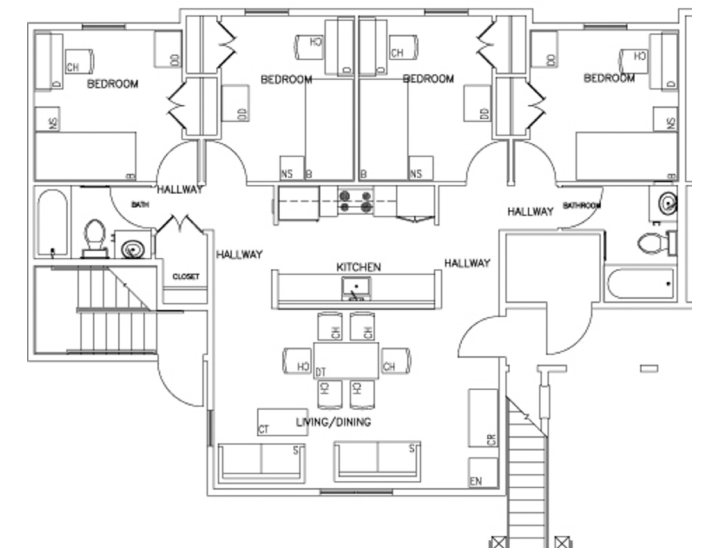
One of Stanford’s largest housing complexes, Rains accommodates single students in two-bedroom, one-bath and four-bedroom, two-bath apartments located in three-story buildings clustered around lawns and courtyards. This residence includes fragments of the Hacienda – an adobe winery built in 1875 – and a restored Buttery from the same era.



Rains, Exterior



Rains, 2-Bedroom/1-Bath



Rains, 4-Bedroom/2-Bath

RESIDENCE CHOICES & RATES

SINGLE GRADUATE HOUSING

Residence	# of Bedrooms	# of Baths	Occupancy	Monthly Rate (per person)	Contract Length	# of Spaces	Average Square Footage	Bed Size	Living Room	Kitchen
■ Studio Apartments Private living/bedroom area, bath and kitchen										
Escondido Village Graduate Residences, premium	none	one	single	\$2319/month	full-year & academic-year	385	438	queen	living/bedroom	eat-in kitchen with stools
Escondido Village Kennedy Residences, premium	none	one	single	\$2219/month	full-year	24	439	queen	living/bedroom	eat-in kitchen with stools
Escondido Village, standard	none	one	single	\$1808/month	full-year	754	325	full extra-long	living/bedroom	eat-in kitchen with stools
Munger Graduate Residence, premium	none	one	single	\$2565/month	full-year & academic-year	66	500	queen	living/bedroom	dining table & chairs
Munger Graduate Residence, standard	none	one	single	\$2393/month	full-year & academic-year	74	450	full extra-long	living/bedroom	eat-in kitchen with stools
■ Shared Premium Apartments Private bedroom and bath, shared kitchen and living/dining room										
Escondido Village Graduate Residences	two	two	double	\$1808/month	full-year & academic-year	586	876	full extra-long	shared	dining table & chairs
Escondido Village Kennedy Residences	two	two	double	\$1780/month	full-year	108	878	full extra-long	shared	dining table & chairs
Munger Graduate Residence	four	four	quadruple	\$2027/month	full-year & academic-year	284	1725	full extra-long	shared	dining table & chairs
Munger Graduate Residence	two	two	double	\$2051/month	full-year & academic-year	62	1050	full extra-long	shared	dining table & chairs
■ Shared Standard Apartments Private bedroom, shared bath, kitchen and living/dining room										
Escondido South, Low-Rise	three	one	triple	\$1261/month	full-year	51	800	twin extra-long	shared	dining table & chairs
Escondido South, Low-Rise	two	one	double	\$1445/month	full-year & quarterly	22	650	twin extra-long	shared	dining table & chairs
Escondido Village, Low-Rise	three	one	triple	\$1261/month	full-year & quarterly	105	800	twin extra-long	shared	dining table & chairs
Escondido Village, Low-Rise	two	one	double	\$1445/month	full-year & quarterly	178	650	twin extra-long	shared	dining table & chairs
Lyman Graduate Residences	two	one	double	\$1445/month	full-year	224	575	twin extra-long	shared	dining table & chairs
Rains Houses	four	two	quadruple	\$1438/month	full-year	284	1000	full extra-long	shared	dining table & chairs
Rains Houses	two	one	double	\$1445/month	full-year	492	500	full extra-long	shared	dining table & chairs
■ Shared Junior Apartments Private bedroom and bath, shared eat-in kitchen, no living room										
Escondido Village Graduate Residences	two	two	double	\$1473/month	full-year & academic-year	480	665	full extra-long	none	eat-in kitchen with stools
Escondido Village Kennedy Residences	two	two	double	\$1346/month	full-year	220	679	full extra-long	none	eat-in kitchen with stools
■ Shared Junior Apartments Private bedroom, shared bath, eat-in kitchen, no living room										
Escondido Village, High-Rise and McFarland Mid-Rise	two	one	double	\$1038/month	full-year & academic-year	246	460	twin extra-long	none	eat-in kitchen with stools
■ GSB Residences Private entrance, bedroom and bath, shared eat-in kitchen, no living room										
GSB Residences, Jack McDonald Hall	two	two	double	\$2160/month	academic-year	190	700	full extra-long	none	shared
GSB Residences, Schwab Residential Center	two	two	double	\$2110/month	academic-year	162	700	full extra-long	none	shared
■ Off-Campus Subsidized Housing										
Oak Creek	two	one	double	\$1449/month	full-year	86	940	twin extra-long	shared	dining table & chairs
Oak Creek	two	two	double	\$1781/month	full-year	72	1170	twin extra-long	shared	dining table & chairs
All other 2 bedroom apartments	two	varies	double	\$1449/month	full-year	304	900	twin extra-long	shared	dining table & chairs
All other 3 bedroom apartments	three	varies	triple	\$1449/month	full-year	99	1200	twin extra-long	shared	dining table & chairs

Single Graduate Housing

Graduate students attending Stanford without a spouse, partner or children are eligible for Single Graduate Housing. Undergraduate students 25 years of age or older attending Stanford without a spouse, partner or children are also eligible for Single Graduate Housing. Single students are assigned to a variety of single-occupancy studio apartments and shared apartments with two, three or four bedrooms.

Housing Rates and Contracts

Student housing charges fall below average local area rents. Housing charges, along with house dues and a technology fee, are billed each quarter. If you receive a salary through Stanford Payroll, you can make payments through payroll deduction.

Stanford housing rates and other fees include furnishings, utilities and internet. On-campus housing rates additionally include coinless/cardless laundry and, in most complexes, access to computer clusters and common rooms, such as lounges and game rooms.

Note: Monthly rates are provided for comparison purposes. Students pay for every night that they are in housing. You are billed quarterly based on monthly rates while in continuous housing. Billing will be prorated based on your actual contract start and end dates. More information is available at rde.stanford.edu/studenthousing/graduate-housing-rates-and-billing-information.

- Escondido Village Low-Rises
- Escondido Village Mid-Rises
- Escondido Village High-Rises
- Escondido Village Studios
- Escondido Village Graduate Residences
- Escondido Village Kennedy Residences
- Escondido South
- Lyman Graduate Residences
- Munger Graduate Residence
- Rains Houses
- GSB Residences
- Off-Campus Subsidized Housing

RESIDENCE CHOICES & RATES

COUPLE WITHOUT CHILDREN HOUSING

Residence	# of Bedrooms	# of Baths	Occupancy	Monthly Rate (per apt.)	Contract Length	# of Spaces	Average Square Footage	Bed Size	Living Room	Kitchen
■ Studio Apartments										
Escondido Village Graduate Residences, premium	none	one	couple	\$2319/month	full-year & academic-year	106	438	queen	living/bedroom	eat-in kitchen with stools
Escondido Village Kennedy Residences, premium	none	one	couple	\$2219/month	full-year	84	439	queen	living/bedroom	eat-in kitchen with stools
Escondido Village, standard	none	one	couple	\$1808/month	full-year	80	325	full extra-long	living/bedroom	eat-in kitchen with stools
Munger Graduate Residence, premium	none	one	couple	\$2565/month	full-year & academic-year	96	500	queen	living/bedroom	dining table & chairs
■ One-Bedroom Apartments										
Escondido Village, McFarland Mid-Rise	one	one	couple	\$2328/month	full-year	50	450	queen	private	dining table & chairs
Escondido Village, Mid-Rise	one	one	couple	\$2350/month	full-year	252	450	queen	private	dining table & chairs
Escondido Village, Low-Rise	one	one	couple	\$2350/month	full-year	35	450	queen	private	dining table & chairs
GSB Residences, Jack McDonald Hall	one	two	couple	\$3220/month	academic-year	6	700	queen	private	dining table & chairs
GSB Residences, Schwab Residential Center	one	two	couple	\$3170/month	academic-year	8	700	queen	private	dining table & chairs
Munger Graduate Residence	one	one	couple	\$3351/month	full-year & academic-year	18	650	queen	private	dining table & chairs
Escondido Village, Low-Rise with den	one	one	two-student couple	\$2676/month	full-year	5	700	queen	private	dining table & chairs
■ Two-Bedroom Apartments										
Escondido Village, Low-Rise	two	one	couple	\$2890/month	full-year	26	740	queen	private	dining table & chairs
Escondido Village Graduate Residences, premium	two	two	couple	\$3616/month	full-year & academic-year	35	876	queen	private	dining table & chairs
■ Off-Campus Subsidized Housing										
Oak Creek, studio	none	one	couple	\$2258/month	full-year	18	500	queen	living/bedroom	dining table & chairs
All other studios	none	one	couple	\$2221/month	full-year	2	400	queen	living/bedroom	dining table & chairs
All other apartments	one	one	couple	\$2355/month	full-year	88	600	queen	private	dining table & chairs
All other apartments	two	one	couple	\$2898/month	full-year	44	850	queen	private	dining table & chairs

STUDENT WITH CHILDREN HOUSING

Residence	# of Bedrooms	# of Baths	Occupancy	Monthly Rate (per apt.)	Contract Length	# of Spaces	Average Square Footage	Bed Size	Living Room	Kitchen
Escondido Village / Escondido South, Low-Rise	two	one	couple with one to three children or student-parent with one to four children	\$2552/month	full-year	181	740	one queen & one twin extra-long	private	dining table & chairs
Escondido Village / Escondido South, Low-Rise	three	one	couple with two to five children or student-parent with two to six children	\$3085/month	full-year	80	875	one queen & two twins extra-long	private	dining table & chairs
Escondido South, Low-Rise	four	one	couple with three to seven children or student-parent with three to eight children	\$3426/month	full-year	2	1050	one queen & three twins extra-long	private	dining table & chairs
Escondido Village, Low-Rise	one	one	couple with one child or student-parent with one to two children	\$2350/month	full-year	varies	450	one queen	private	dining table & chairs
Escondido Village, Low-Rise with den	one	one	couple with one child or student-parent with one to two children	\$2676/month	full-year	varies	700	one queen	private	dining table & chairs
Escondido Village Kennedy Residences, studio	none	one	student-parent with one child	\$2219/month	full-year	varies	439	one queen	private	eat-in kitchen with stools
■ Off-Campus Subsidized Housing										
Oak Creek	two	one or two	couple with one to three children or student-parent with one to four children	\$2552/month	full-year	56	940	one queen & one twin extra-long	private	dining table & chairs
Oak Creek	one	one	couple with one child or student-parent with one to two children	\$2355/month	full-year	varies	670	one queen	private	dining table & chairs
Oak Creek	none	one	student-parent with one child	\$2258/month	full-year	varies	500	one queen	living/bedroom	dining table & chairs

Couple without Children Housing

Couples without children are eligible for studios, one-, or two-bedroom units. A domestic partnership is defined as two adults who have chosen to share one another's lives in an intimate and committed relationship. Couples housing is not intended for friend pairs, siblings, parents, or members of a student's extended family.

Student with Children Housing

Students with children are eligible for studios, one-, two-, three-, or four-bedroom units depending on the number of occupancy-eligible members of the family (student, child(ren) and spouse or domestic partner). For students with children, Stanford uses an occupancy limit of two persons per studio, and two persons per bedroom + one for larger units. For example, depending on availability, 1) a family comprised of a student-parent and child is eligible to live in a studio, one-bedroom, or two-bedroom; 2) a family comprised of a couple and one child is eligible to live in a one-bedroom or two-bedroom; 3) a family comprised of a couple and three children is eligible to live in a two-bedroom, three-bedroom or four-bedroom.

The two-, three-, and four-bedroom Escondido Village low-rise apartments have fenced in patios that open on to gated play areas. The one-bedroom, one-bedroom with den and studio apartments do not have fenced in patios.

Stanford does not provide housing for extended families—including students' parents, siblings or live-in childcare staff. If your parents or other family members are moving to the Stanford area, you must make alternate housing arrangements for them.

Housing Rates and Contracts

Student housing charges fall below average local area rents. Housing charges, along with house dues and a technology fee, are billed each quarter. If you receive a salary through Stanford Payroll, you can make payments through payroll deduction.

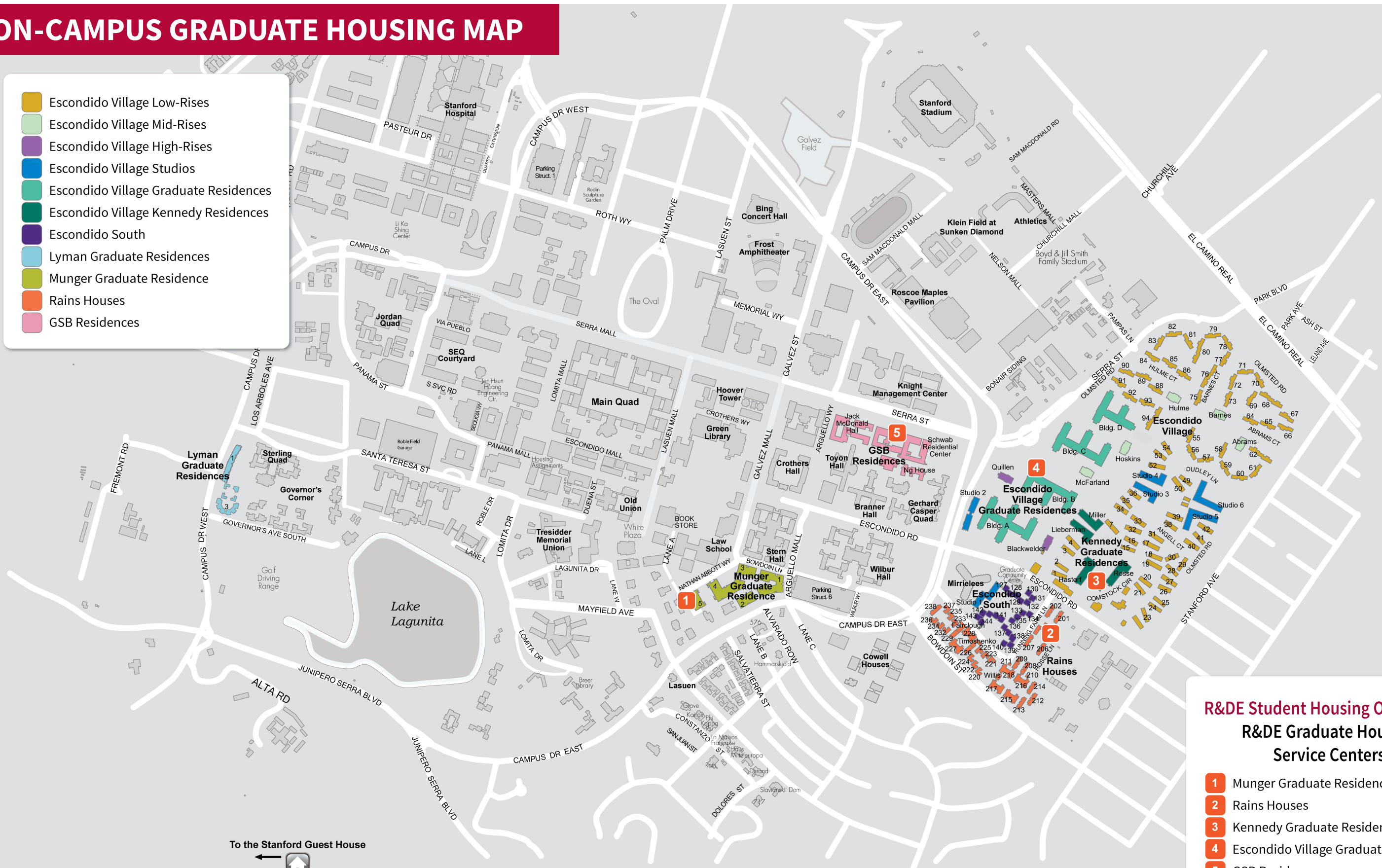
Stanford housing rates and other fees include furnishings, utilities and internet. On-campus housing rates additionally include coinless/cardless laundry and, in most complexes, access to computer clusters and common rooms, such as lounges and game rooms.

Note: Monthly rates are provided for comparison purposes. Students pay for every night that they are in housing. You are billed quarterly based on monthly rates while in continuous housing. Billing will be prorated based on your actual contract start and end dates. More information is available at rde.stanford.edu/studenthousing/graduate-housing-rates-and-billing-information.

- Escondido Village Low-Rises
- Escondido Village Mid-Rises
- Escondido Village Studios
- Escondido Village Graduate Residences
- Escondido Village Kennedy Residences
- Escondido South
- Munger Graduate Residence
- GSB Residences
- Off-Campus Subsidized Housing

ON-CAMPUS GRADUATE HOUSING MAP

- Escondido Village Low-Rises
- Escondido Village Mid-Rises
- Escondido Village High-Rises
- Escondido Village Studios
- Escondido Village Graduate Residences
- Escondido Village Kennedy Residences
- Escondido South
- Lyman Graduate Residences
- Munger Graduate Residence
- Rains Houses
- GSB Residences



- R&DE Student Housing Operations**
R&DE Graduate Housing
Service Centers
- 1 Munger Graduate Residence
 - 2 Rains Houses
 - 3 Kennedy Graduate Residences
 - 4 Escondido Village Graduate Residences
 - 5 GSB Residences

To the Stanford Guest House

OFF-CAMPUS GRADUATE HOUSING OPTIONS

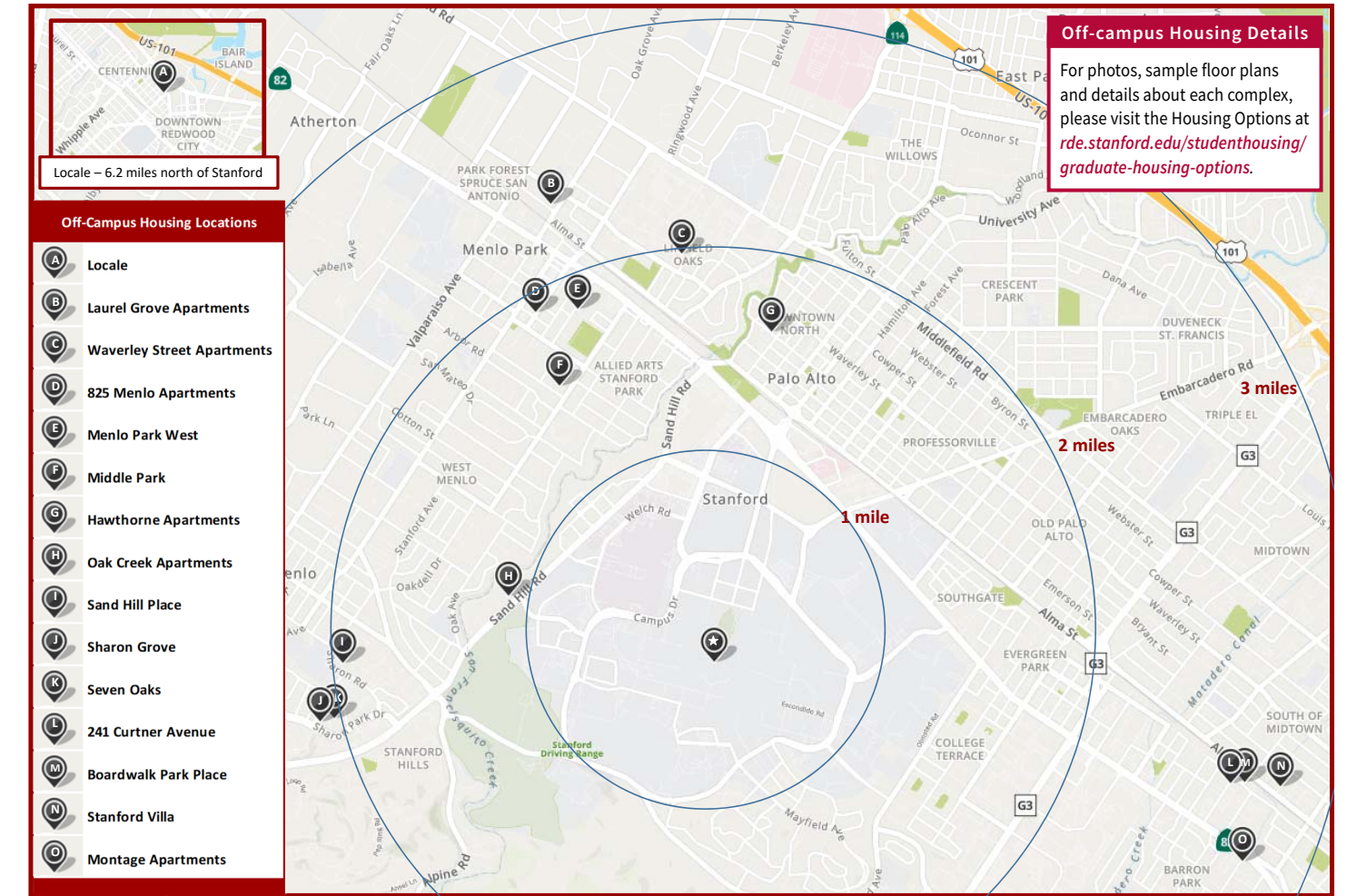
OFF-CAMPUS APARTMENTS

Depending on overall demand, Stanford may house students in apartment communities within Palo Alto, Menlo Park and Redwood City. These off-campus housing choices will be available to rank on your housing application. **Assignment to these spaces will be based on the overall applicant demand and COVID-19 related requirements.** Because we do not know the number of spaces we will assign off-campus, students listing these choices should also rank on-campus housing options. It is important to note that students assigned to these off-campus complexes may have to consolidate within a complex or relocate to campus during the academic year. **Students will not be able to renew for 2023-24.**

Students are also not eligible to sublicense their rooms. Each location promotes a sense of community and is accessible to public transportation (see transportation.stanford.edu/transit) and/or bicycle routes to campus. Most communities are within walking distance of shops and restaurants, and some are on or near a Stanford Marguerite shuttle route. Amenities vary and may include swimming pools, hot tubs, tennis courts, exercise rooms and rentable community rooms. Visit rde.stanford.edu/studenthousing/campus-subsidized-apartments for further information and photos.

Most options for single students are two-bedroom, double occupancy and three-bedroom, triple occupancy apartments that allow students to have their own bedroom in a shared apartment. Options for couples include studio and one-bedroom apartments in Palo Alto and Menlo Park. Oak Creek is the closest property to campus with the largest concentration of students. Its many social activities lend the complex a resort-like atmosphere. Apartments in Menlo Park are either near downtown or in the Sharon Heights neighborhood. Apartments in Redwood City are further away from Stanford, but are newly built.

STANFORD OFF-CAMPUS APARTMENT COMPLEX LOCATIONS



Locale



Montage Apartments



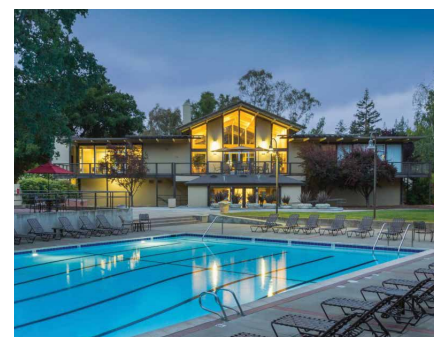
Stanford Villa



Seven Oaks Apartments



Sand Hill Place



Oak Creek Apartments

LOOKING FOR OFF-CAMPUS HOUSING ON YOUR OWN

Rental housing is available near Stanford, but the university is located in a highly desirable suburban area in the heart of Silicon Valley. Consequently, off-campus rental rates are relatively high compared to many other regions of the United States. More affordable options can be found if you look a little further from campus. If you expect to live off campus, plan to start your housing search at least a month in advance.

We have partnered with Places4Students to provide local rental listings accessible only to Stanford students and affiliates. To view the rental listings, you will either need a Stanford email address or you can contact Community Housing with proof of your affiliation for a temporary password. For further instructions, please visit R&DE Student Housing's Community Housing website at offcampus.stanford.edu.

PARKING AND TRANSPORTATION

Alternative transportation programs are offered to support residents who are able to go car-free. For more details visit transportation.stanford.edu.

For information about parking availability near residences and around campus, please visit: transportation.stanford.edu/parking.

Graduate students should be aware that the University is not planning to extend the Pilot Caltrain Go Pass program for graduate students beyond the 2022 calendar year.



More information about the Calendar Year 2022 program is available on the Stanford Transportation website.

NEW GRADUATE STUDENT ORIENTATION

The Graduate Life Office (GLO) coordinates New Graduate Student Orientation (NGSO) to welcome and orient new graduate students to Stanford. NGSO programs are open to all new graduate students. This year as with last year, we will work together as a community to address the challenges presented by the global pandemic and social injustice. Our goal for NGSO is to inform and connect new graduate students to useful campus resources that will assist you during your time as a graduate student. Currently, logistics and specifics for NGSO are in discussion. Please check our website for more information. glo.stanford.edu/ngso.

MOVING IN

- Students are required to schedule a move-in appointment after receiving their housing assignment. Move-in appointments are generally during business hours. Contact your R&DE Housing Service Center if you need to check in earlier than the established move-in dates or outside of posted service center hours: housing-service-center.stanford.edu.
- If you cannot check in during our published business hours, please call (650) 725-1602 for after-hours check-in assistance. When calling that number, a representative of the R&DE Community Access Response Enterprise (CARE) will meet you at the respective service center or designated area to provide you with your apartment keys. Please have your picture ID ready.
- Housing charges will be adjusted to reflect the move-in appointment date you select after you are assigned.
- Pre-Clinical MD and MSPA students have a special process to request an earlier move-in date before orientation. Not all residences or group assignments will be available for early arrival.
- You will have the opportunity to share contact information with your assigned roommate prior to checking in. While we encourage you to take advantage of this opportunity, it is not required and both roommates must opt in and share contact information in order to connect.

GRADUATE STUDENT GATEWAY

The Graduate Student Gateway gradgateway.stanford.edu is a one-stop resource for incoming grad students providing important information before and after your arrival.

STUDENTS WITH SCHOOL-AGED CHILDREN

The Palo Alto Unified School District (PAUSD) is one of the top districts in the United States, so it can be competitive to secure a space in the schools near campus for your child.

- You can begin the registration process once you have your apartment address (sent to you by early July) and finalize it after you move in.
- Once you have your address, go to pausd.org/registration/new-student-registration-process for information on how to register your child for school and what documents you need to provide.
- Although you won't have utility bills while living on campus, you can still obtain a bank account and cell phone bill with your new address.
- It is important that you ensure your child has had the appropriate immunizations so registration is not delayed. (Go to pausd.org for details). The TB Risk Assessment form must be completed by a U.S. health professional. International students should plan on doing this as soon as possible after arrival in the U.S.
- There is a small possibility that there will not be space at the closest school to your home. If so, you will be assigned to another PAUSD school and have priority to move to the closest one when space is available.

CAMPUS DINING

R&DE Cafés

R&DE cafés – EVGR Pub & Beer Garden, Forbes Family Café, Med Café, Coffee Bar @ the Clark Center, the Axe & Palm, Alumni Café, Law School Café, SLACafé, Heirlooms, Kikka Sushi, Curry Up Now, Starbucks, Panda Express and Subway – offer convenient meal options for every taste. In addition, the Market at Munger and EVGR Marketplace offer one-stop shopping for campus-living essentials, including fresh produce, meal kits, grab-and-go sandwiches and salads, grocery staples, sundries and more. We are committed to providing a safe retail environment for our customers and staff with increased cleaning, disinfecting and safety protocols. We offer convenient contact-free shopping and meal preorder online and with our app and provide grocery delivery and curbside pick-up options.

For R&DE café and market locations and hours visit rde.stanford.edu/hospitality/locations.

Cardinal Dollars are accepted at all R&DE retail locations and Stanford students pay no sales tax on meal purchases when presenting their valid student ID at time of service. Save nearly 20% by frequenting Stanford-operated retail locations. Proceeds from R&DE retail locations help offset increases in room and board, and support student programs. Visit cardinaldollars.stanford.edu.

R&DE Dining Halls

Dining Hall Meal Plan Information – R&DE Stanford Dining, a division of Residential & Dining Enterprises, is a best-in-class dining program serving 18,000 meals a day in 13 dining halls, 41 Row houses, Athletic Dining, and Schwab Executive Dining. Several dining halls offer special menu concepts. These are: Star Ginger (Southeast Asian, Wilbur Dining), Cardinal Sage (Mexican, Stern Dining), Red Skillet Kitchen (soul food, southern classics, Lakeside Dining) and Saffron Mediterranean Kitchen (Arrillaga Family Dining Commons) in the dining hall section. Dining hall locations and hours can be views on the R&DE website [here](#).

Stanford Dining also oversees the campus *BeWell* community gardens and the Stanford Food Pantry. As the dining department of the world's premier research and teaching institution, R&DE Stanford Dining has been recognized for its culinary excellence by awards such as the prestigious industry Ivy Award by Restaurants and Institutions for its leadership role.

R&DE Stanford Dining is *Committed to Excellence* by providing meal programs that support the development of communities within residences and across neighborhoods. R&DE Stanford Dining meal plans offer significant value, the highest quality food and flexibility of dining across campus to create new connections and allow students to engage in intellectual and lively discussions over meals with each other, faculty, and members of the Stanford community.



R&DE Stanford Dining prides itself on providing *nutritious, sustainable, and delicious* food choices — embodying the *Menus of Change Principles*, as part of its leadership of the *Menus of Change University Research Collaborative* — to meet the wide variety of dietary needs within our diverse Stanford community. The *Eat Well @Stanford program* provides support to students dining with food allergies, religious requirements, medical needs, vegan/vegetarian diets, and other nutritional needs. For more information on navigating your dietary needs in the neighborhoods, please contact nutritionist@stanford.edu.

R&DE Stanford Dining also has a long history of award-winning sustainability leadership. Our *One Plate, One Planet* vision captures the full breadth of our pioneering sustainable food program, which represents bold, long-term commitments to climate action and racial equity. It celebrates the power of social consciousness, operational innovation, and individual food choices in promoting sustainable food systems. We believe that with each plate we serve, and each meal our students eat, we have the opportunity to create a better future for this planet together. Learn more about our *Sustainable Food Ethos* that guides our purchasing decisions, the positive impact we have through our menu and operations in our *Sustainable Food @Stanford By the Numbers infographic*, and practical tips for *How to Eat Sustainably on Campus*.

Grad Student Meal Plans – Grad students and post-docs can purchase meals for breakfast, brunch, lunch, and dinner meal blocks for use in any open dining hall or can purchase any of the undergraduate dining hall meal plans. The EVGR Pub will offer meal plan meals next year for student dining, as an extension of EVGR Dining, for lunch and dinner Monday - Friday. *Meal plans are also available for spouses and partners of grad and post-doc students.* Visit our [dining hall locations and hours page](#) for more information on where meal plans can be used. **Meal Plan Dollars** may be used at select R&DE Stanford Hospitality & Auxiliaries retail locations or any R&DE Stanford Dining location, including all late-night operations. **Cardinal Dollars** may be used at all R&DE Stanford Dining and R&DE Stanford Hospitality & Auxiliaries retail locations. Grad students can use them at your leisure as meal plan blocks don't expire! **Meal card accounts that are inactive for 12 months or longer, from the last date of usage, will be forfeited and closed; meal blocks are non-transferable.* Grad students can also purchase *Apartment meal plans* or the *Standard Dining Hall Meal plans* as well.

2022-23 MOVE-IN DATES

QUARTER	DATE	STUDENT
Autumn	August 5, 2022	Students with school-age children
	August 19, 2022	Pre-clinical MD and MSPA students
	August 26, 2022	Early arrival option for all students
	August 29, 2022	First-year law students
	September 2, 2022	Early arrival option for all students
	September 9, 2022	Early arrival option for all students
	September 14, 2022 September 16, 2022	Residents of the GSB Residences All students
Winter	January 6, 2023	All students
Spring	March 31, 2023	All students
Summer	June 24, 2023	All students

Meal plans are purchased [online](#). Please allow two business days from the date of purchase for your meals and dining hall access to be activated. While active, these voluntary grad meal blocks are fully refundable. For questions or further assistance, please email diningplans@stanford.edu.

Food Allergies & Special Dietary Needs – R&DE Stanford Dining offers a variety of accommodations for students with food allergies and specialized dietary requirements through the Food Allergies @Stanford program. We have a dedicated Food Allergy Program and Inclusive Nutrition Program Specialist to support hundreds of Stanford students, staff and guests with food allergies and special dietary needs. As the prevalence of food allergies and other dietary needs continues to grow on campus, our nutritionists work closely with the [Office of Accessible Education \(OAE\)](#) to ensure that the university is adequately accommodating students with medically documented dietary needs as outlined by the Americans with Disabilities Act.

R&DE Stanford Dining has proudly partnered with [FARE \(Food Allergy Research & Education\)](#) to help improve the college experience for students with food allergies through enhanced awareness, accommodations, and training. The R&DE Stanford Dining nutrition team reviews all ingredients, recipes, and menus for allergens, trains R&DE staff on food allergy accommodations, and provides nutrition counseling and education for students to help with managing their dietary needs on campus. Stanford is also home to nut-sensitive dining programs at Wilbur, Stern, and Ricker dining halls.

Stanford Dining identifies the top 9 major allergens that are contained in, or may have come in contact with, the foods served in the dining halls. Daily menus are published [online](#), and food labels identify ingredients and allergens at the point of service. Allergens we label across R&DE Stanford Dining include: Coconut, Egg, Milk, Fish, Sesame, Shellfish, Tree Nuts, Peanuts, Soy, Wheat.

We work with each student individually to determine the dining strategy that best meets their dietary needs. The Food Allergies @Stanford support team includes the R&DE Stanford Dining nutritionists, chefs, and managers who work together to ensure students with food allergies and dietary needs have an exceptional dining experience. For more information about the accommodations available and how to get support with your food allergy or special dietary need, view our [Food Allergies @Stanford brochure](#) or reach out to nutritionist@stanford.edu. To register for the Food Allergies @Stanford program, please complete our [Request for Dining Accommodations Form](#).

Religious Dietary Accommodations – In this new and rapidly changing environment, **we strongly encourage**

students with religious dietary needs to plan ahead and coordinate any necessary accommodations before arriving to campus. Read below to learn more about the accommodations that are available through R&DE Stanford Dining. Students with religious dietary needs should contact the [Office for Religious Life](#) to discuss how their needs can be met on campus. It is important to reach out to discuss your specific needs prior to arriving on campus.

Kosher Dining – R&DE Stanford Dining offers a [Glatt kosher lunch and dinner program](#) at Florence Moore Dining in partnership with students, the [Office for Religious Life](#), Hillel, and Residential Education. To learn more about Kosher Dining, please visit the [Kosher Dining webpage](#) or contact nutritionist@stanford.edu.

Halal Dining – R&DE Stanford Dining offers a variety of food options to accommodate the dietary needs of Stanford's Muslim community. All chicken served in the dining halls is certified halal and halal beef is also available on a rotating basis. We do not cook with alcohol in any of our recipes and we are conscious to avoid cross-contact of pork products during food production. During Ramadan, we provide Suhoor to-go boxes and Iftar meals in the dining halls to keep students well-nourished while fasting. Students in any on-campus residence will have access to halal dining options from R&DE Stanford Dining. To learn more about halal dining, please contact nutritionist@stanford.edu.

Other Religious Dietary Requirements – Students with other religious dietary needs should consult with the [Office for Religious and Spiritual Life](#) about how their needs can be accommodated at Stanford prior to arriving on campus. Some religious dietary requirements, such as maintaining a vegetarian or vegan diet, can be accommodated in the dining halls. However, students with highly specific or complex restrictions may find it difficult to navigate these needs in the current COVID dining environment. Students who believe their religious dietary needs cannot be accommodated in the dining halls must request a different housing assignment with access to a kitchen to prepare their own foods, by contacting the [Office for Religious and Spiritual Life](#) prior to coming to campus.

R&DE Food Pantry Pop up – R&DE is pleased to partner with the Graduate Student Council (GSC) and Second Harvest Food Bank to address campus food insecurity in the graduate community. We have collaborated to pilot The Stanford Food Pantry Pop-up on campus located in the EVGR C (2) BBQ patio area. The Food Pantry is hosted on the second Monday of each month from 11am to 2:30pm. Participants can sign up through our website: rde.stanford.edu/food-pantry-pop-up which provides more information on upcoming events, and sign up to volunteer.



CONTACT INFORMATION

R&DE Student Housing Assignments
408 Panama Mall, Suite 101, Stanford, CA 94305
studenthousing.stanford.edu
(650) 725-2810

For questions, submit a ServiceNow request at stanford.service-now.com/services

Bechtel International Center
bechtel.stanford.edu
For questions relating to issuance of 1-20s/DS-2019s, applications for visas and other immigration related questions

Community Housing
offcampus.stanford.edu
communityhousing@stanford.edu

Graduate Life Office
glo.stanford.edu
(650) 736-7078

Office of Accessible Education
oae.stanford.edu
(650) 723-1066

Office of the Senior Associate Vice Provost for R&DE and Senior Adviser to the Provost on Equity and Inclusion
rde.stanford.edu
(650) 721-2956

R&DE Student Housing Service Centers
housingservicecenter.stanford.edu

R&DE Stanford Dining
dining.stanford.edu
(650) 723-4751

R&DE Stanford Hospitality & Auxiliaries
hospitality.stanford.edu
cardinaldollars.stanford.edu
(650) 725-1510

Stanford Guest House
guesthouse.stanford.edu
(650) 926-2800

Visitor Information
stanford.edu/dept/visitorinfo
(650) 723-2560

Parking & Transportation
transportation.stanford.edu
(650) 723-9362

