

WELCOME HOME

— APPLYING FOR —

STANFORD GRADUATE HOUSING



2021 - 2022

(Clockwise from left) Student in Piano Room; Lyman Graduate Residences, Common Area; Escondido Village Graduate Residences (EVGR) R&DE Housing Front Desk; Escondido Village Graduate Residences (rendering); EVGR Junior Two-Bedroom, Kitchen and Dining Area



thelottery.stanford.edu

TABLE OF CONTENTS

- Applying for Housing3
- Assignment Process and Priorities4-5
- COVID-19 Overview6
- On-Campus Graduate Housing Options 6-15
- Residence Choices and Rates 16-17
- Graduate Housing Map 18-19
- Off-Campus Graduate Housing Options 20-21
- Move-in Information 22
- Campus Dining23
- Contact Information24



APPLYING FOR GRADUATE HOUSING

HOW TO APPLY

Apply online through Axess (axess.stanford.edu). Submit your application between **April 2, 2021** and **May 6, 2021** to participate in the first-round Lottery.

- New students are only guaranteed housing if they apply by the May 6 deadline, and select “assign me to any residence for which I am eligible” as their final application choice.
- Continuing students who are eligible to renew must do so by the May 6 deadline.

If you apply after the May 6 deadline, you will receive a sequential application number based on the date you submit your application.

You will need a **SUNet ID** to apply for housing. Instructions for obtaining a SUNet ID are included in your admission mailing. **Please set up your SUNet ID immediately after receiving your letter of admission.** You should be able to apply for housing in Axess within about 48 hours of creating your SUNet ID.

On your application, you will select the quarter you want your housing to start, your category of housing (single, couple without children or student with children), your requested move-in date and rank all your residence choices.

To improve your chances of being assigned to your desired housing, rank ALL apartment locations in the order you would like to be assigned until you have no further preferences.

If you need housing for summer 2021, you will need to submit a second application in Axess for just that quarter.

DISABILITY/MEDICAL ACCOMMODATIONS

If you, your spouse, partner or child have particular housing needs due to a documented disability or medical condition, you may participate in the Medical Accommodation Lottery, which takes place prior to the main Lottery. More information is available at rde.stanford.edu/studenthousing/medical-accommodations

- Register with the Office of Accessible Education by **April 6.** oaeconnect.stanford.edu
- Submit a housing accommodation request form with the Office of Accessible Education by **April 16.**
- Submit a housing application in Axess by **April 16.**

REASSIGNMENTS

After the Lottery assignments are announced, students may apply for reassignment, if they wish to change their assignment. An initial reassignment process will take place in July as part of the second round. If you are not reassigned, you can apply for ongoing reassignments that are made on a rolling basis each quarter after the demand from unassigned students is met.

If your family status changes, you should apply for housing in your new category as soon as you know about the change.

ROOMMATES IN SHARED HOUSING

If you are a single student assigned to a shared apartment, your roommate will be matched based on the roommate preferences you list on your application.

If you would like to live with specific friends, you are able to apply with a group of up to four students. If all group members have the same priority level and are the same gender, they are likely to be kept together.

rde.stanford.edu/studenthousing/applying-group-graduate-housing

For information on applying with friends of different genders: rde.stanford.edu/studenthousing/graduate-gender-neutral-housing

2021-22 HOUSING APPLICATION DEADLINES

QUARTER	ASSIGNMENT ROUND	APPLICATION DEADLINE	ASSIGNMENTS ANNOUNCED
Autumn	Medical accommodations	Now - April 6 to register with the OAE and April 16 to apply for housing and file OAE request	May 5
	First-round Lottery and renewal assignments	May 6	May 22
	Second-round assignments	July 5	July 24
	Rolling assignments	July 5 – October 22	July 26 – October 22
Winter	First-round assignments	October 22 (apply as early as possible beginning April 2)	November 13
	Rolling assignments	October 23 – February 4	November 15 – February 4
Spring	First-round assignments	February 4, 2022 (apply as early as possible beginning April 2)	February 26
	Rolling assignments	February 5 – April 29	February 28 – April 29

Submit your 2021-22 applications for all quarters in Axess beginning on April 2, 2021.



HOW ASSIGNMENTS ARE MADE

R&DE Student Housing uses a lottery to assign housing to graduate students. You are assigned according to (1) your assignment priority level, (2) a random lottery number and (3) your housing choices.

When the program gets to your priority level and lottery number, it will place you into the highest available residence on your preference list. If all of the residences you have listed are full, you will be assigned by your final choice.

If you select “assign me to any residence for which I am eligible,” you could be assigned to any on-campus housing option except Munger, the GSB Residences and the premium studios for single graduate students, due to their price. The system will assign you to a residence that is left over at the end of the process.

If you select “assign me only to the residences I have listed,” you will not be assigned if we cannot assign you to a residence you have listed. First-year students who select this option and are not assigned in the first round will be able to join future assignment rounds with high priority, but are no longer guaranteed.

In either case, we strongly recommend that you rank as many choices as possible to improve your chance of being assigned by your preferences.

FIRST-YEAR GRADUATE STUDENTS

If you are enrolled in a Stanford graduate degree program for the first time, housing is guaranteed for your first year if

- You apply by the Lottery deadline – **May 6, 2021**.
- You select “assign me to any residence for which I am eligible” as your final application choice. (Students selecting this choice will not be assigned to Munger, the GSB Residences, off-campus options or the premium studios for single students unless they have specifically listed them.)
- Your first-year assignment priority is only effective during your first-academic year of graduate study. It cannot be used later, even if you are admitted to an additional degree program. **However, new graduate students who were admitted in the 2020-21 year and who did not use their guaranteed year due to the pandemic will keep their first-year assignment priority for 2021-22 as a one-time exception to this policy.**

If you apply after the deadline or have restricted housing choices, you will lose your first-year guarantee. However, you will still be considered with high priority for housing before continuing students and students with no priority.

ORDER FOR ASSIGNING STUDENT HOUSING

- Student staff and students needing medical accommodations.
- Students living on campus with medium priority who are renewing their spring housing for the next year.
- Students living in subsidized off-campus housing with medium priority who apply for the same category.
- Guaranteed first-year students who applied by the deadline and selected “assign me to any residence for which I am eligible” as their final application choice.
- First-year students with high priority who limited their housing choices or applied after the Lottery deadline.
- Students with medium priority who are not renewing.
- Students with low priority.
- Students with no priority.
- Non-matriculated students.

Your first-year assignment priority is only effective during your first academic year of graduate study. It cannot be used later, even if you are admitted to an additional degree program.

Students beginning a second graduate degree program are considered continuing students. Co-terminal students are considered continuing students with a low priority and are not guaranteed housing.

CONTINUING STUDENTS

After Your First Year

Your options after your first year are based on your housing priority. (See chart on next page.)

- Students with medium priority who want to stay in the same apartment may be able to renew annually and bypass the first-round Lottery if they are living in a full-year building.
- Students who want to change residences or who are not eligible to renew their housing should join the first-round Lottery.

PRIORITY BY DEGREE

Random Lottery Number

The best numbers (lowest numbers) are randomly assigned to students who apply for housing by the Lottery deadline. Students who miss the first-round deadline will receive a sequential number based on the date their application is submitted.

Assignment Priority is determined by:

- Your student status (first-year or continuing graduate student)
- Your degree program (PhD, master’s, etc.)
- The total number of years you have lived in graduate housing

PROGRAMS	HOUSING CATEGORY	YR 1	YR 2	YR 3	YR 4	YR 5	YR 6	YR +7
Doctoral degree candidates	All categories	G/H	M	M	M	M	M	N
Medical students in the MD program	All categories	G/H	M	M	M	M	N	N
Law students in the JD program	All categories	G/H	M	M	N	N	N	N
Coterminal students	All categories	L	N	N	N	N	N	N
Master’s students	Single graduate	G/H	L	N	N	N	N	N
	Couple without children	G/H	L	N	N	N	N	N
	Student with children	G/H	M	N	N	N	N	N
Non-matriculated students	All categories	P	P	P	P	P	P	P

CHART LEGEND

G/H = High Priority | Can apply through Lottery

- Students in the first year of their first graduate degree program at Stanford (does not include coterminal students) are guaranteed housing (G) if they apply by the Lottery deadline and are willing to accept any assignment.
- First-year students who miss the deadline or are not willing to accept any assignment are no longer guaranteed, but are given a high priority (H) and are considered for housing before students with lower priority levels.

M = Medium Priority | Can renew if in on-campus housing

- Continuing doctoral students with priority years who have already had a year of guarantee or high priority.
- Master’s students applying for a second year of housing who are living in students with children housing.

Regardless of their priority level, we are strongly encouraging all graduate students and post docs who need housing to apply for the Lottery. There is no risk in submitting a Lottery application. If you are assigned and subsequently wish to cancel your housing assignment, you may do so with no fee until Sunday, August 15, 2021.

Special Off-campus Priority for Lottery 2021

Doctoral students living in the off-campus subsidized apartments who are applying for the same category will have a special priority to on-campus housing and their off-campus residence, if available in the 2021 Lottery. They will be assigned ahead of first-year students.

L = Low Priority | Cannot renew but can apply through Lottery

- Master’s students applying for a second year of housing who are living in single graduate or couple without children housing.
- Coterminal students in the first year of eligibility for graduate housing who have used their four years of undergraduate housing.

N = No Priority | Cannot renew but can apply through Lottery

- Students who have used their housing priority years.

P = Non-matriculated Priority | Cannot renew but can apply through Lottery

- Non-degree seeking students who are enrolled as post-docs or visitors.

COVID-19 OVERVIEW

The health and well-being of Stanford students is R&DE's highest priority. Since the onset of the COVID-19 pandemic, we've followed the guidance of government and university health experts and closely observed the evolving mandates, so that we can continue to safely provide housing and dining services for students.

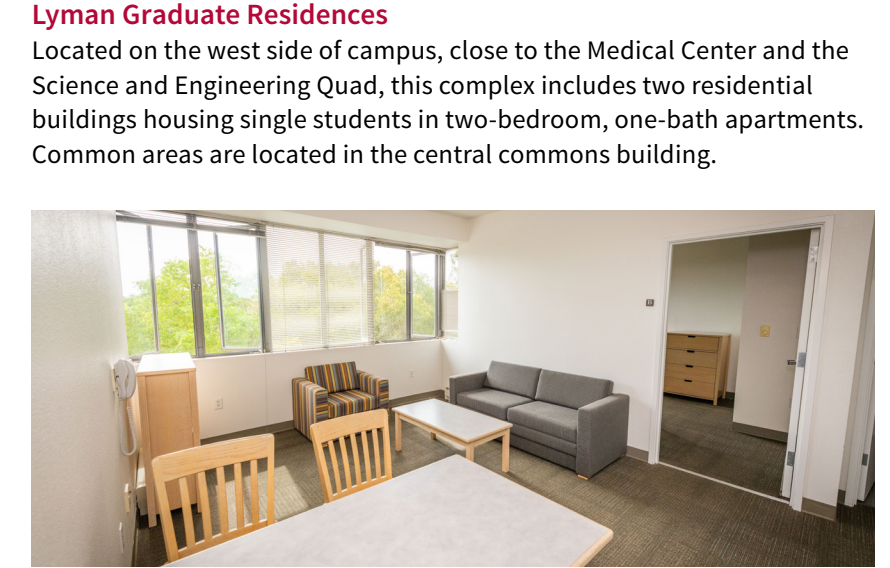
As the circumstances of the pandemic evolve, we hope this will result in a loosening of restrictions and an eventual return to a more typical campus environment. Until this happens, students arriving for autumn can expect some or all of the following measures to be in place.

- To prevent the spread of the virus, face coverings, handwashing and physical distancing are required in all R&DE locations, except inside student apartments and in gatherings of authorized household groups. We have also instituted enhanced cleaning in all facilities.
- Meals in R&DE dining halls and retail locations are offered to go only. Students must present a green Health Check badge and have their temperature checked to enter. As restrictions are lifted, we expect to offer limited indoor seating. The Market at Munger and EVGR Marketplace offer free grocery delivery and contact free curbside pickup. You can learn about safety measures in dining by visiting our [CleanDining](#) program webpage.
- We have also enhanced our emergency preparedness plan, including identifying quarantine and isolation spaces, should we need them. This is especially important with students arriving on campus from all over the world.
- Students who need a place to work or study outside their apartments may reserve respite spaces on campus. As local restrictions have eased, there are also spaces where members of registered households can gather together. We hope this will increase the sense of community and connectedness among students.

More information about COVID-19 safety protocols will be provided closer to the start of autumn quarter. The university also provides updates on the [Health Alerts](#) and [Grad Updates](#) websites.



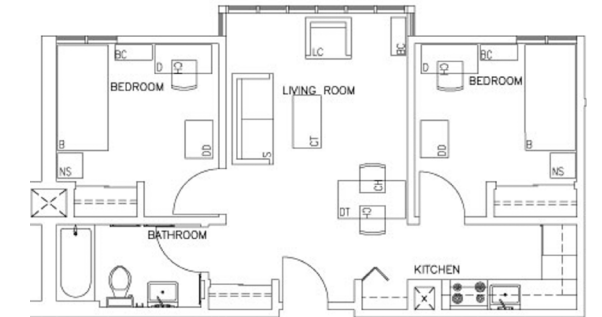
Lyman Graduate Residence, Bedroom



Lyman Graduate Residence, Living Room



Lyman Graduate Residences, Exterior



Lyman Graduate Residences, 2-Bedroom/1-Bath

ON-CAMPUS GRADUATE HOUSING OPTIONS

Graduate Housing

Stanford offers housing to single students, students with domestic partners of any gender and students with children. All housing is smoke-free. Pets are not allowed, although some animals are approved for medical reasons.

More information about housing options can be found at rde.stanford.edu/studenthousing/graduate-housing-options. The floor plans and photos in this section are representative samples. Your apartment may have variations.

In Every Apartment

Students can expect bedroom furnishings such as a bed, dresser, nightstand, closet, desk and desk chair. Kitchens are generally equipped with refrigerator/freezer, electric stove, oven and sink with garbage disposal. Living spaces are commonly furnished to include coffee table, dining room table with chairs, small counter-height table with chairs, or counter with chairs and a sofa.

Residents pay no additional charge for utilities (water, heat, electricity, garbage, sewer). WiFi and long-distance VoIP calling is available in on-campus residences and is included in your technology fee (\$78/quarter).



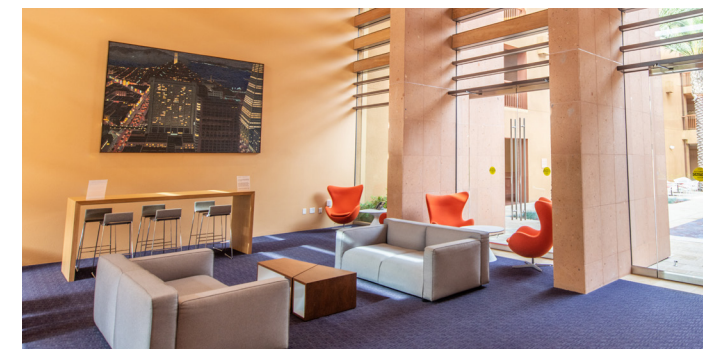
Escondido Village Graduate Residences, Exterior

GSB Residences

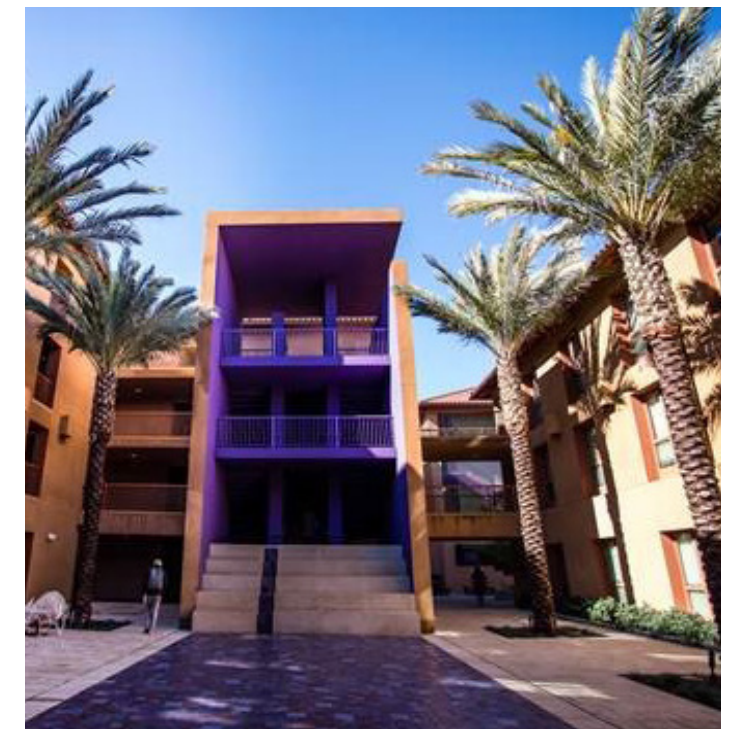
Stanford's Graduate School of Business (GSB) manages the GSB Residences, located across from the GSB on Jane Stanford Way.

Jack McDonald Hall and Schwab Residential Center offer studio apartments with shared kitchens. Most spaces are assigned to first-year GSB students.

Note: The GSB Residences are not automatically included if you indicate on the housing application that you are willing to be assigned anywhere.



GSB Residences, Jack McDonald Hall, Commons Interior



GSB Residences, Exterior

Munger Graduate Residence

Conveniently located, Munger's five apartment buildings are adjacent to the Law School and a short walk from White Plaza.

Studios and a limited number of one-bedroom apartments are available to couples. Studios, two- and four-bedroom apartments are available for single graduates. Each student has a private bedroom and bathroom. Premium studios are large enough to accommodate a dining table and chairs, while the standard studios have an eat-in counter with stools. Law students have priority for assignment for 50% of Munger spaces.

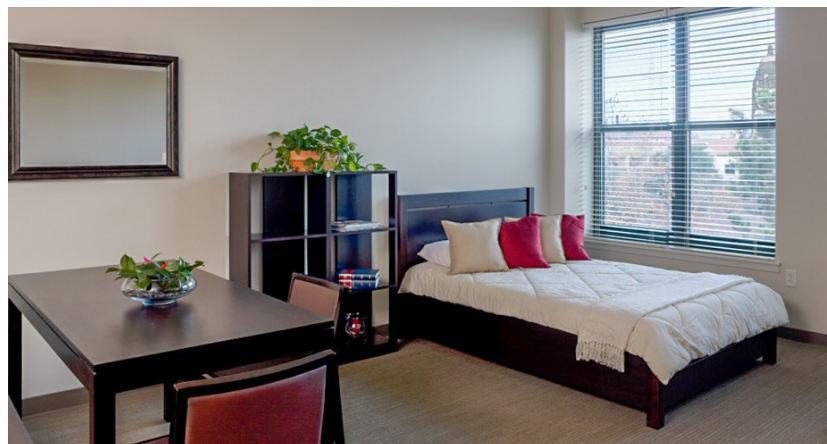
The Market at Munger, in Jacobson-Sorensen Hall, offers fresh produce, grab-and-go meals and a number of grocery and household items.



Munger Graduate Residence, Exterior



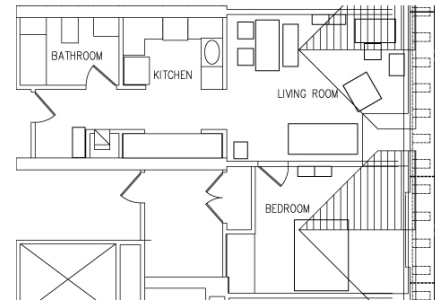
Munger Graduate Residence, Living Room



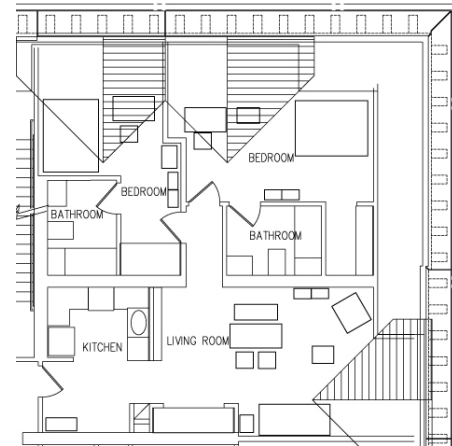
Munger Graduate Residence, Studio Apartment



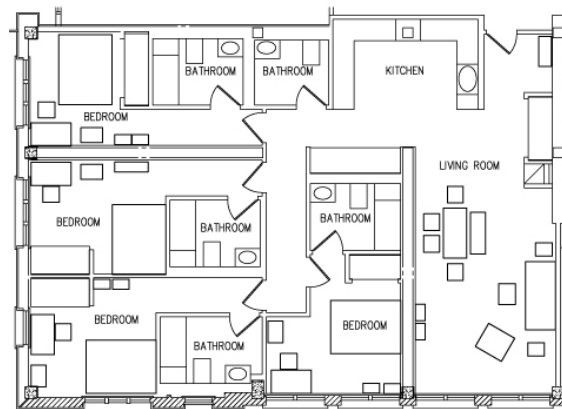
Munger Graduate Residence, Premium Studio/1-Bath



Munger Graduate Residence, 1-Bedroom/1-Bath



Munger Graduate Residence, 2-Bedroom/2-Bath



Munger Graduate Residence, 4-Bedroom/5-Bath

Note: Munger is not automatically included if you indicate on the housing application that you are willing to be assigned anywhere.



Kennedy Graduate Residences, Exterior



Kennedy Graduate Residences, Living Room

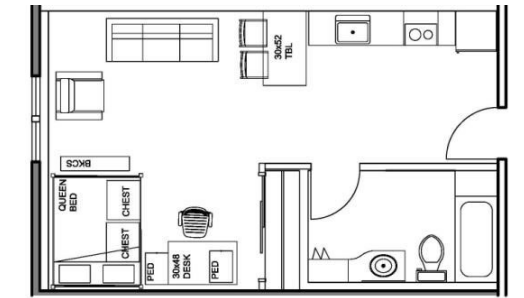


Kennedy Graduate Residences, Bedroom

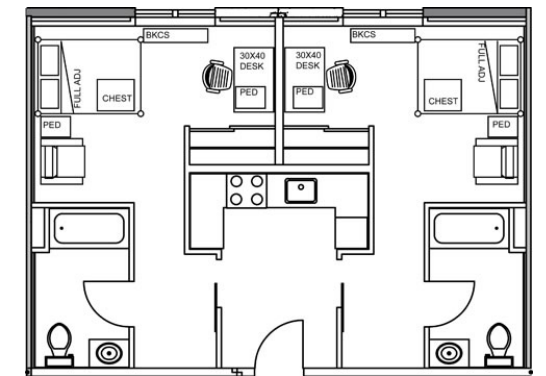
Kennedy Graduate Residences in Escondido Village

Apartments include premium two-bedroom, two-bath apartments with shared living room and kitchen, junior two-bedroom, two-bath units with shared kitchens for single students and premium studios available to couples. Each student has a private bedroom and bathroom.

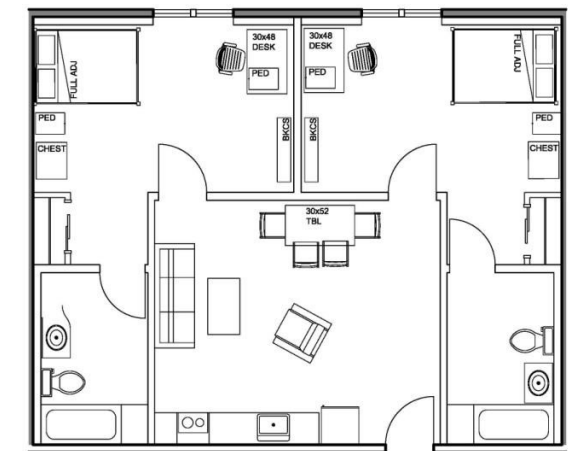
Note: The premium studios are not automatically included for single graduates if you indicate on the housing application that you are willing to be assigned anywhere.



Kennedy Graduate Residences, Premium Studio/1-Bath



Kennedy Graduate Residences, Junior 2-Bedroom/2-Bath



Kennedy Graduate Residences, Premium 2-Bedroom/2-Bath

Escondido Village & Escondido South Low-Rises

Home to couples, families and single students in one- to four-bedroom apartments, these units are located in one- and two-story low-rise apartments arranged around grassy fields, picnic areas and communal courtyards. All family apartments have two stories, fenced patios and access to gated play areas. There are only two four-bedroom apartments available and are assigned to families.

All apartments in Escondido South have two stories. Escondido Village has a combination of one- and two-story apartments that are assigned interchangeably.

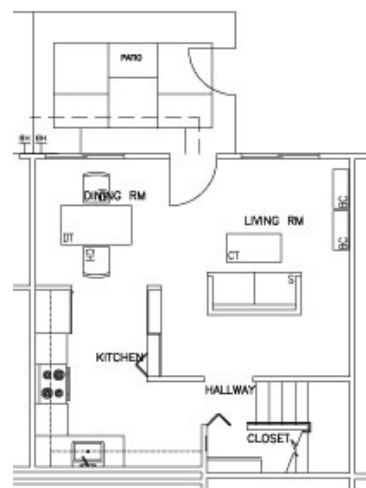
A limited number of couples without children may be assigned to one-bedrooms with den and two-bedroom apartments, depending on demand. **The low-rise apartments are going through a multi-year renovation. Residents should expect to relocate to a renovated low-rise apartment when their building is due for construction.**



Escondido South Two-story Low-Rises, Exterior



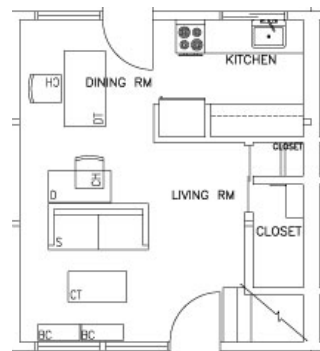
Escondido South One-story Low-Rises, Exterior



Escondido Village & South Low-Rises, 2-Bedroom/1-Bath - First Floor



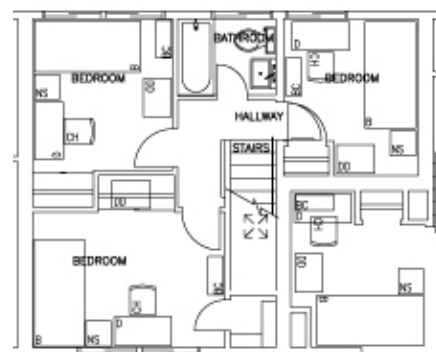
Escondido Village & South Low-Rises, 3-Bedroom/1-Bath - First Floor



Escondido Village Low-Rises, 1-Bedroom/1-Bath - First Floor



Escondido Village & South Low-Rises, 2-Bedroom/1-Bath - Second Floor



Escondido Village & South Low-Rises, 3-Bedroom/1-Bath - Second Floor



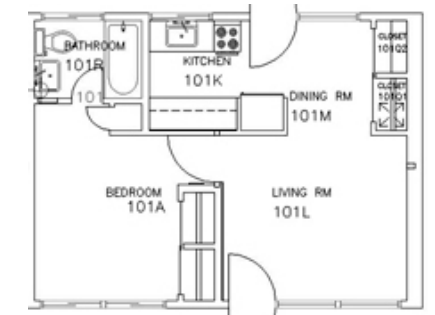
Escondido Village Low-Rises, 1-Bedroom/1-Bath - Second Floor



Escondido Village Low-Rises, Bedroom



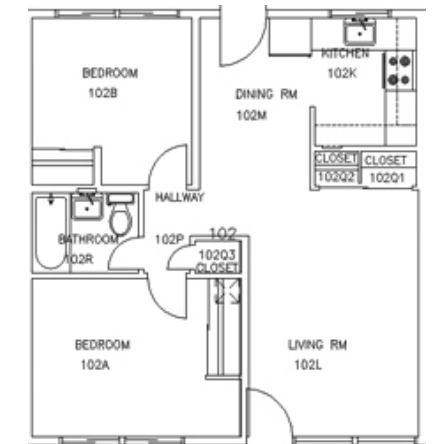
Escondido Village Low-Rises, Living Room



Escondido Village Low-Rises, 1-Bedroom/1-Bath



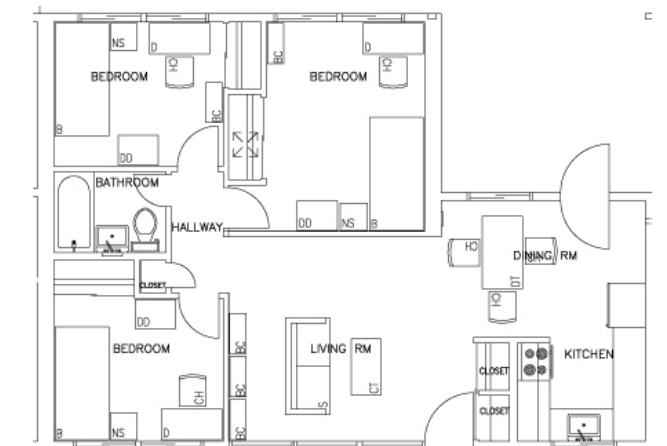
Escondido South Low-Rises, Living Room



Escondido Village Low-Rises, 2-Bedroom/1-Bath



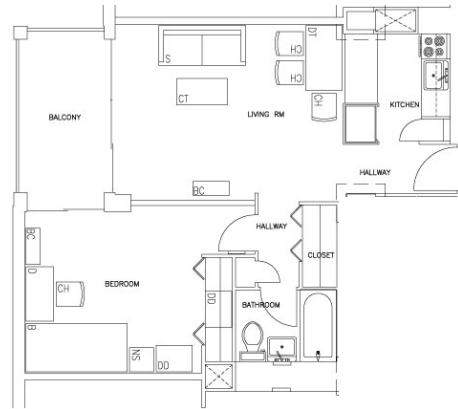
Escondido South Low-Rises, Bedroom



Escondido Village Low-Rises, 3-Bedroom/1-Bath



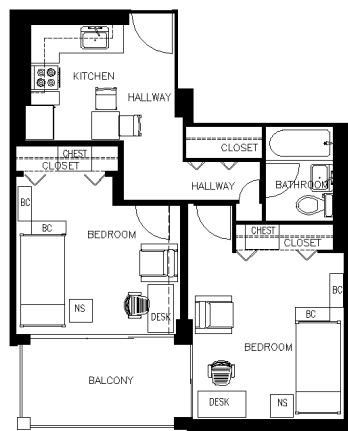
Escondido Village Mid-Rises, Exterior



Escondido Village Mid-Rises, 1-Bedroom/1-Bath for Couples without Children (except McFarland)



Escondido Village Mid-Rises, 1-Bedroom/1-Bath Compact for Couples without Children in McFarland



Escondido Village Mid-Rises, 2-Bedroom/1-Bath for Single Students in McFarland

Escondido Village Mid-Rises and High-Rises
 Five eight-story mid-rise apartments — Abrams, Barnes, Hoskins, Hulme and McFarland — offer one-bedroom apartments for couples without children. Each apartment has a sliding glass door that opens onto a balcony. In McFarland, all units have been remodeled to enclose the kitchen and convert the living room into a second bedroom with a large closet and a locking bedroom door. McFarland is assigned as a junior two-bedroom, one-bath apartment for two single graduate students or as a one-bedroom, one-bath compact for a couple. Lobbies, lounges and other common spaces provide areas for social activities.

Escondido Village also includes two 12-story towers, Blackwelder and Quillen. Each building has 110 junior two-bedroom, one-bath apartments shared by two single students. Common spaces in each building include lounges for social activities, barbecue and picnic areas, computer clusters and a piano practice room. **Blackwelder will close for major renovation in summer and autumn 2022. Residents will have priority to relocate to other housing options. Quillen will close for renovation in winter and spring 2022. Quillen residents will relocate to the renovated Blackwelder apartments.**



Escondido Village Mid-Rises, Interior



Escondido Village Mid-Rises, Interior



Escondido Village High-Rises, Junior 2-Bedroom/1-Bath Apartment



Escondido Village High-Rises, Exterior



Escondido Village High-Rises, Interior



Escondido Village High-Rises, Interior

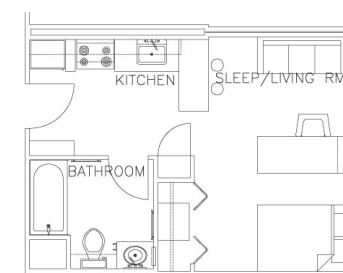
Escondido Village Studios
 Six buildings in Escondido Village accommodate 834 graduate students in single student and couples without children studio apartments. Each studio provides about 325 square feet of space, and combines living and sleeping quarters that include a kitchen and private bathroom. Common areas in each of the six buildings include lounges, computer clusters and laundry facilities.



Escondido Village Studios, Kitchen



Escondido Village Studios, Living-Bedroom



Escondido Village Studios, 1-Bath



Escondido Village Studios, Exterior

Escondido Village Graduate Residences

Escondido Village Graduate Residences (EVGR), which opened in 2020, is Stanford's newest on-campus residential community. Apartments include premium two-bedroom, two-bath apartments with shared living room and kitchen, junior two-bedroom, two-bath units with shared kitchens and premium studios. Each student has a private bedroom and bathroom. Single graduates are assigned to all options and couples are assigned to premium studios and a limited number of premium two-bedroom apartments.

Note: The premium studios are not automatically included for single graduates if you indicate on the housing application that you are willing to be assigned anywhere.



Escondido Village Graduate Residences, Kitchen



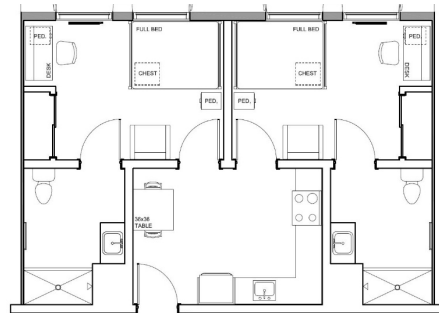
Escondido Village Graduate Residences, Living Room



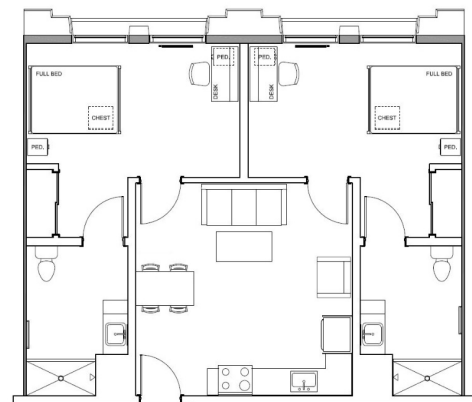
Escondido Village Graduate Residences, Bedroom



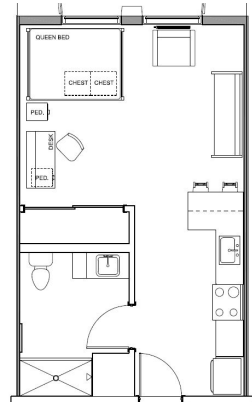
Escondido Village Graduate Residences, Exterior



EVGR, Junior 2-Bedroom/2-Bath



EVGR, Premium 2-Bedroom/2-Bath



EVGR, Premium Studio/1-Bath



Rains, Bedroom



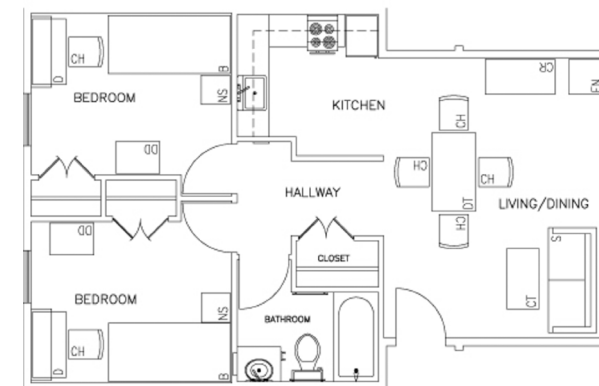
Rains, Living Room

Rains Houses

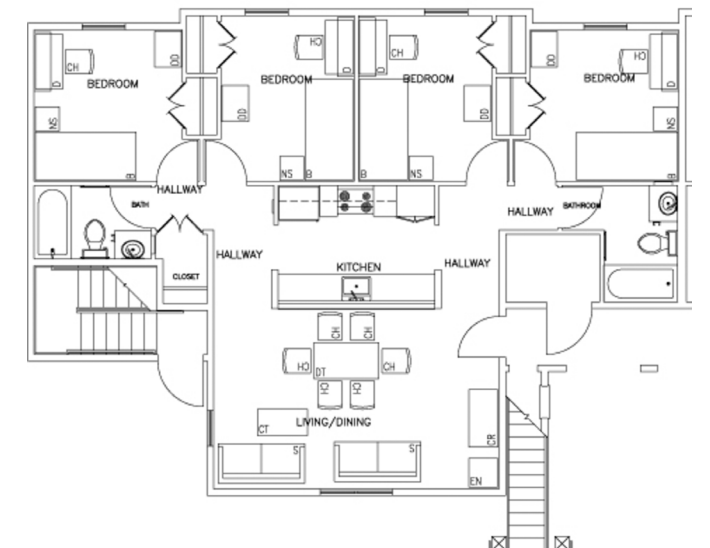
One of Stanford's largest housing complexes, Rains accommodates single students in two-bedroom, one-bath and four-bedroom, two-bath apartments located in three-story buildings clustered around lawns and courtyards. This residence includes fragments of the Hacienda – an adobe winery built in 1875 – and a restored Buttery from the same era.



Rains, Exterior



Rains, 2-Bedroom/1-Bath



Rains, 4-Bedroom/2-Bath

ON-CAMPUS RESIDENCE CHOICES & RATES

SINGLE GRADUATE HOUSING

Residence	# of Bedrooms	# of Baths	Occupancy	Monthly Rate (per person)	Contract Length	# of Spaces	Average Square Footage	Bed Size	Living Room	Kitchen
■ Studio Apartments Private living/bedroom area, bath and kitchen										
Escondido Village Graduate Residences, premium	none	one	single	\$2241/month	full-year & academic-year	423	438	queen	living/bedroom	eat-in kitchen with stools
Escondido Village Kennedy Residences, premium	none	one	single	\$2144/month	full-year	10	439	queen	living/bedroom	eat-in kitchen with stools
Escondido Village, standard	none	one	single	\$1747/month	full-year	627	325	full extra-long	living/bedroom	eat-in kitchen with stools
Munger Graduate Residence, premium	none	one	single	\$2472/month	full-year & academic-year	62	500	queen	living/bedroom	dining table & chairs
Munger Graduate Residence, standard	none	one	single	\$2306/month	full-year & academic-year	74	450	full extra-long	living/bedroom	eat-in kitchen with stools
■ Shared Premium Apartments Private bedroom and bath, shared kitchen and living/dining room										
Escondido Village Graduate Residences	two	two	double	\$1747/month	full-year & academic-year	596	876	full extra-long	shared	dining table & chairs
Escondido Village Kennedy Residences	two	two	double	\$1720/month	full-year	108	878	full extra-long	shared	dining table & chairs
Munger Graduate Residence	four	four	quadruple	\$1954/month	full-year & academic-year	284	1725	full extra-long	shared	dining table & chairs
Munger Graduate Residence	two	two	double	\$1977/month	full-year & academic-year	62	1050	full extra-long	shared	dining table & chairs
■ Shared Standard Apartments Private bedroom, shared bath, kitchen and living/dining room										
Escondido South, Low-Rise	three	one	triple	\$1218/month	full-year	57	800	twin extra-long	shared	dining table & chairs
Escondido South, Low-Rise	two	one	double	\$1396/month	full-year & quarterly	38	650	twin extra-long	shared	dining table & chairs
Escondido Village, Low-Rise	three	one	triple	\$1218/month	full-year & quarterly	111	800	twin extra-long	shared	dining table & chairs
Escondido Village, Low-Rise	two	one	double	\$1396/month	full-year & quarterly	178	650	twin extra-long	shared	dining table & chairs
Lyman Graduate Residences	two	one	double	\$1396/month	full-year	224	575	twin extra-long	shared	dining table & chairs
Rains Houses	four	two	quadruple	\$1389/month	full-year	284	1000	full extra-long	shared	dining table & chairs
Rains Houses	two	one	double	\$1396/month	full-year	492	500	full extra-long	shared	dining table & chairs
■ Shared Junior Apartments Private bedroom and bath, shared eat-in kitchen, no living room										
Escondido Village Graduate Residences	two	two	double	\$1423/month	full-year & academic-year	480	665	full extra-long	none	eat-in kitchen with stools
Escondido Village Kennedy Residences	two	two	double	\$1300/month	full-year	220	679	full extra-long	none	eat-in kitchen with stools
■ Shared Junior Apartments Private bedroom, shared bath, eat-in kitchen, no living room										
Escondido Village, High-Rise and McFarland Mid-Rise	two	one	double	\$1003/month	full-year & academic-year	468	460	twin extra-long	none	eat-in kitchen with stools
■ GSB Residences Private entrance, bedroom and bath, shared eat-in kitchen, no living room										
GSB Residences, Jack McDonald Hall	two	two	double	\$2105/month	academic-year	190	700	full extra-long	none	shared
GSB Residences, Schwab Residential Center	two	two	double	\$2055/month	academic-year	162	700	full extra-long	none	shared

COUPLE WITHOUT CHILDREN HOUSING

Residence	# of Bedrooms	# of Baths	Occupancy	Monthly Rate (per apt.)	Contract Length	# of Spaces	Average Square Footage	Bed Size	Living Room	Kitchen
■ Studio Apartments										
Escondido Village Graduate Residences, premium	none	one	couple	\$2241/month	full-year & academic-year	98	438	queen	living/bedroom	eat-in kitchen with stools
Escondido Village Kennedy Residences, premium	none	one	couple	\$2144/month	full-year	98	439	queen	living/bedroom	eat-in kitchen with stools
Escondido Village, standard	none	one	couple	\$1747/month	full-year	85	325	full extra-long	living/bedroom	eat-in kitchen with stools
Munger Graduate Residence, premium	none	one	couple	\$2472/month	full-year & academic-year	100	500	queen	living/bedroom	dining table & chairs
■ One-Bedroom Apartments										
Escondido Village, McFarland Mid-Rise	one	one	couple	\$2249/month	full-year	49	450	queen	private	dining table & chairs
Escondido Village, Mid-Rise	one	one	couple	\$2270/month	full-year	249	450	queen	private	dining table & chairs
Escondido Village, Low-Rise	one	one	couple	\$2270/month	full-year	35	450	queen	private	dining table & chairs
GSB Residences, Jack McDonald Hall	one	two	couple	\$3140/month	academic-year	6	700	queen	private	dining table & chairs
GSB Residences, Schwab Residential Center	one	two	couple	\$3090/month	academic-year	8	700	queen	private	dining table & chairs
Munger Graduate Residence	one	one	couple	\$3230/month	full-year & academic-year	18	650	queen	private	dining table & chairs
Escondido Village, Low-Rise with den	one	one	two-student couple	\$2585/month	full-year	5	700	queen	private	dining table & chairs
■ Two-Bedroom Apartments										
Escondido Village, Low-Rise	two	one	couple	\$2792/month	full-year	25	740	queen	private	dining table & chairs
Escondido Village Graduate Residences, premium	two	two	couple	\$3494/month	full-year & academic-year	30	826	queen	private	dining table & chairs

STUDENT WITH CHILDREN HOUSING

Residence	# of Bedrooms	# of Baths	Occupancy	Monthly Rate (per apt.)	Contract Length	# of Spaces	Average Square Footage	Bed Size	Living Room	Kitchen
Escondido Village / Escondido South Low-Rise	two	one	family with one or two children	\$2490/month	full-year	160	740	one queen & one twin extra-long	private	dining table & chairs
Escondido Village / Escondido South Low-Rise	three	one	family with two or three children	\$3009/month	full-year	68	875	one queen & two twins extra-long	private	dining table & chairs
Escondido South Low-Rise	four	one	family with three or four children	\$3342/month	full-year	2	1050	one queen & three twins extra-long	private	dining table & chairs

Housing Rates and Contracts

Student housing charges fall below average local area rents. Housing charges, along with house dues and a technology fee, are billed each quarter. If you receive a salary through Stanford Payroll, you can make payments through payroll deduction.

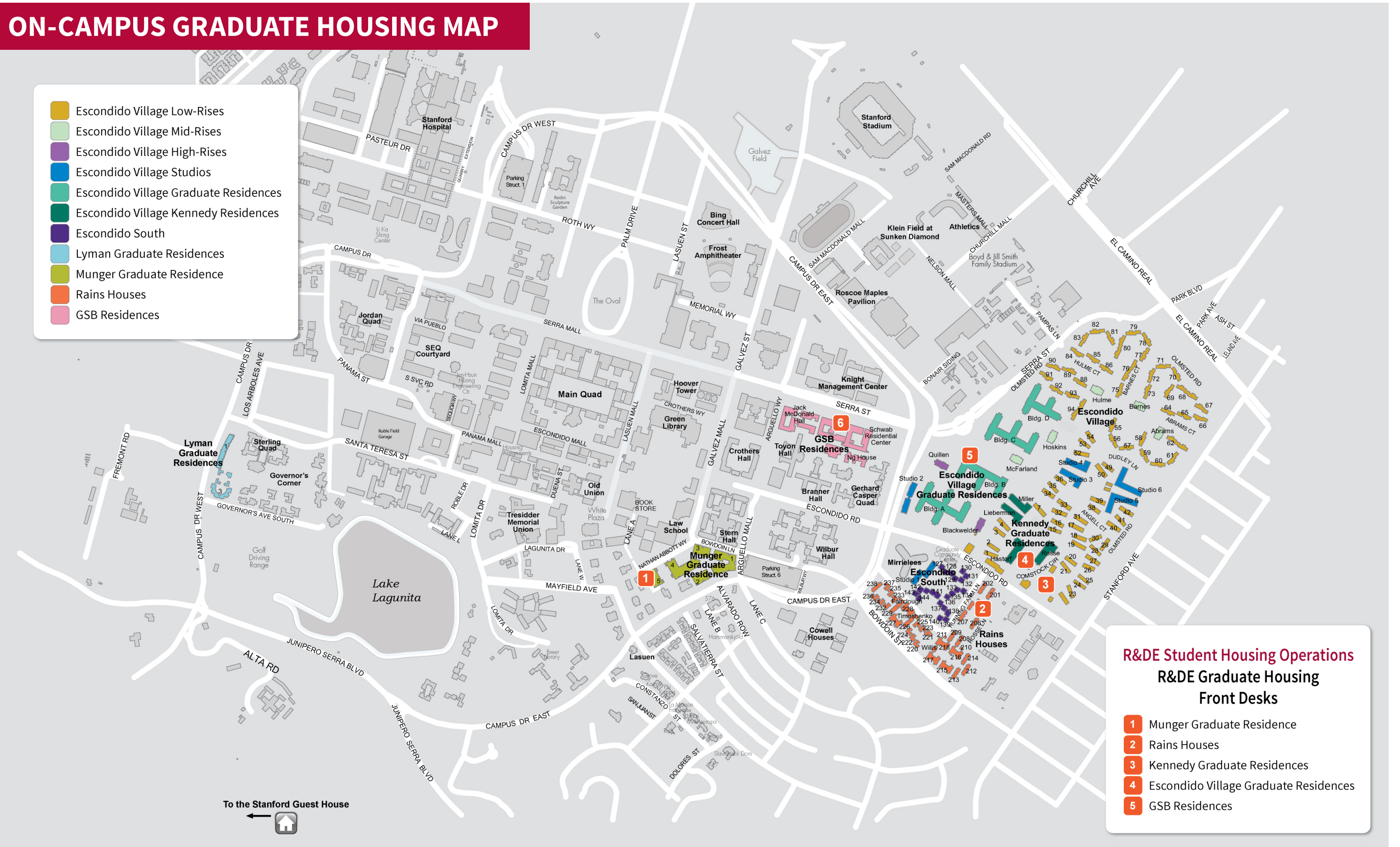
Stanford housing rates and other fees include furnishings, utilities and internet. On-campus housing rates additionally include coinless/cardless laundry and, in most complexes, access to computer clusters and common rooms, such as lounges and game rooms.

Note: Monthly rates are provided for comparison purposes. Housing is billed quarterly depending on the number of days in each quarter. More information is available at rde.stanford.edu/studenthousing/graduate-housing-rates-and-billing-information.

- Escondido Village Low-Rises
- Escondido Village Mid-Rises
- Escondido Village High-Rises
- Escondido Village Studios
- Escondido Village Graduate Residences
- Escondido Village Kennedy Residences
- Escondido South
- Lyman Graduate Residences
- Munger Graduate Residence
- Rains Houses
- GSB Residences

ON-CAMPUS GRADUATE HOUSING MAP

- Escondido Village Low-Rises
- Escondido Village Mid-Rises
- Escondido Village High-Rises
- Escondido Village Studios
- Escondido Village Graduate Residences
- Escondido Village Kennedy Residences
- Escondido South
- Lyman Graduate Residences
- Munger Graduate Residence
- Rains Houses
- GSB Residences



- R&DE Student Housing Operations**
R&DE Graduate Housing
Front Desks
- 1 Munger Graduate Residence
 - 2 Rains Houses
 - 3 Kennedy Graduate Residences
 - 4 Escondido Village Graduate Residences
 - 5 GSB Residences

To the Stanford Guest House

OFF-CAMPUS GRADUATE HOUSING OPTIONS

OFF-CAMPUS APARTMENTS

Depending on overall demand, Stanford may house students in apartment communities within Palo Alto, Menlo Park, Mountain View and Redwood City. These off-campus housing choices will be available to rank on your housing application. **Assignment to these spaces will be based on the overall applicant demand and COVID-19 related requirements.** Because we do not know the number of spaces we will assign off-campus, students listing these choices should also rank on-campus housing options. It is important to note that students assigned to these off-campus complexes may have to relocate to campus during the academic year if demand for on-campus housing changes. **Students will not be able to renew for 2022-23.**

Students are also not eligible to sublicense their rooms.

Each location promotes a sense of community and is accessible to public transportation (see transportation.stanford.edu/transit) and/or bicycle routes to campus. Most communities are within walking distance of shops and restaurants, and some are on or near a Stanford Marguerite shuttle route. Amenities vary and may include swimming pools, hot tubs, tennis courts, exercise rooms and rentable community rooms.

Visit rde.stanford.edu/studenthousing/campus-subsidized-apartments for further information and photos.

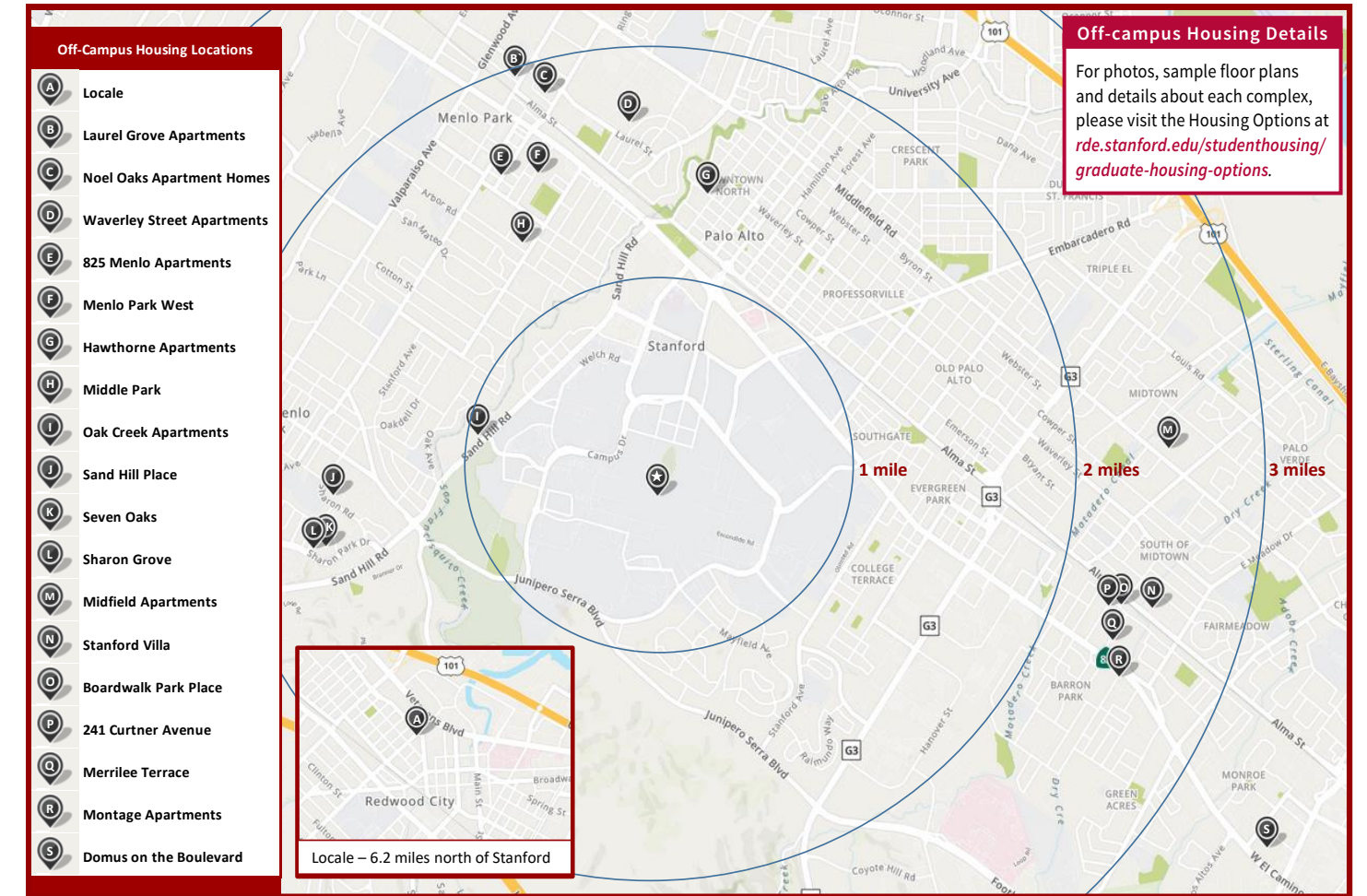
Most options for single students are two-bedroom, double occupancy and three-bedroom, triple occupancy

apartments that allow students to have their own bedroom in a shared apartment.

Oak Creek is the closest property to campus with the largest concentration of students. Its many social activities lend the complex a resort-like atmosphere. Apartments in Menlo Park are either near downtown or in the Sharon Heights neighborhood. Apartments in Redwood City and Mountain View are further away from Stanford, but are newly built.

Options for couples include studio and one-bedroom apartments in Palo Alto and Menlo Park.

STANFORD OFF-CAMPUS APARTMENT COMPLEX LOCATIONS



SINGLE GRADUATE HOUSING

Residence	Occupancy	Monthly Rate (per person)
Oak Creek 2 bedroom, 1 bath	Double	\$1396/month
Oak Creek 2 bedroom, 2 bath	Double	\$1717/month
All other 2 bedroom apartments	Double	\$1396/month
All other 3 bedroom apartments	Triple	\$1396/month

COUPLE WITHOUT CHILDREN HOUSING

Residence	Occupancy	Monthly Rate (per apt.)
Oak Creek Studio, 1 bath	All couples	\$2176/month
All other studios	All couples	\$2140/month
1 bedroom, 1 bath	All couples	\$2270/month
2 bedroom, 1 bath	All couples	\$2792/month

STUDENT WITH CHILDREN HOUSING

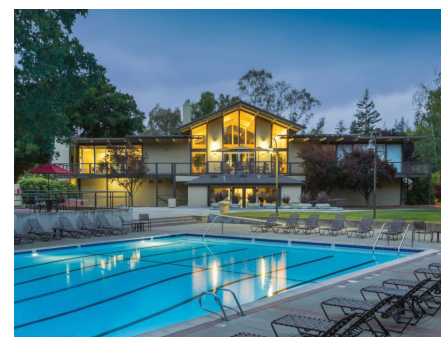
Residence	Occupancy	Monthly Rate (per apt.)
Oak Creek 2 bedroom, 1 or 2 bath	All families	\$2490/month



Seven Oaks Apartments



Sand Hill Place



Oak Creek Apartments

LOOKING FOR OFF-CAMPUS HOUSING ON YOUR OWN

Rental housing is available near Stanford, but the university is located in a highly desirable suburban area in the heart of Silicon Valley. Consequently, off-campus rental rates are relatively high compared to many other regions of the United States. More affordable options can be found if you look a little further from campus.

To check local rental listings accessible only to Stanford students and affiliates, visit R&DE Student Housing's Community Housing website at offcampus.stanford.edu.

You will be directed from there to the rental listings, which are available through the Places4Students website. To view the rental listings, you will either need a Stanford email address or you can contact Community Housing with proof of your affiliation for a temporary password.

If you expect to live off campus, plan to start your housing search at least a month in advance.

PARKING AND TRANSPORTATION

Alternative transportation programs are offered to support residents who are able to go car-free. For more details visit transportation.stanford.edu.

For information about parking availability near residences and around campus, please visit: transportation.stanford.edu/parking.



NEW GRADUATE STUDENT ORIENTATION

The Graduate Life Office (GLO) coordinates New Graduate Student Orientation (NGSO) to welcome and orient new graduate students to Stanford. NGSO programs are open to all new graduate students. This year as with last year, we will work together as a community to address the challenges presented by the global pandemic and social injustice. Our goal for NGSO is to inform and connect new graduate students to useful campus resources that will assist you during your time as a graduate student. Currently, logistics and specifics for NGSO are in discussion. Please check our website for more information.

glo.stanford.edu/ngso.

MOVING IN

- Students are required to schedule a move-in appointment after receiving their housing assignment. Move-in appointments are generally during business hours. Contact your R&DE Housing Front Desk if you need to check in earlier than the established move-in dates or outside of posted front desk hours: housingfrontdesks.stanford.edu.
- If you cannot check in during our published business hours, please call (650) 725-1602 for after-hours check-in assistance. When calling that number, a representative of the R&DE Community Access Response Enterprise (CARE) will meet you at the respective front desk or designated area to provide you with your apartment keys. Please have your picture ID ready.
- Housing charges will be adjusted to reflect the move-in appointment date you select after you are assigned.
- Pre-Clinical MD and MSPA students have a special process to request an earlier move-in date before orientation. Not all residences or group assignments will be available for early arrival.
- You will have the opportunity to share contact information with your assigned roommate prior to checking in. While we encourage you to take advantage of this opportunity, it is not required and both roommates must opt in and share contact information in order to connect.

GRADUATE STUDENT GATEWAY

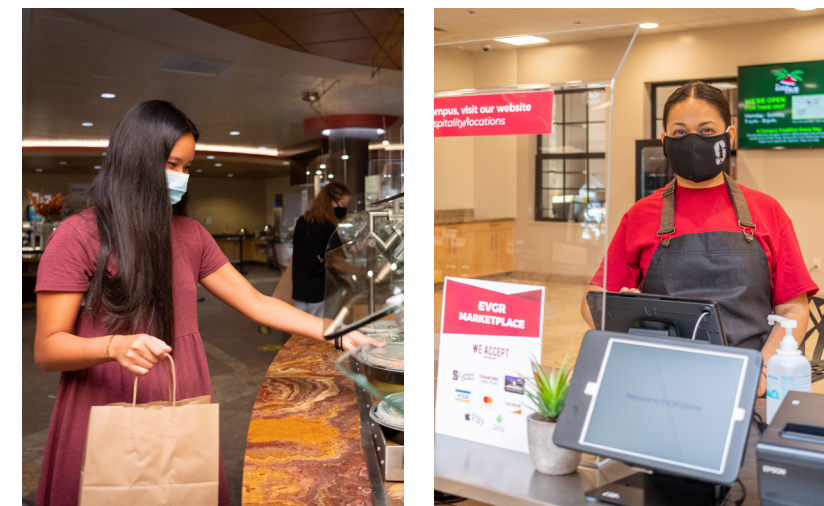
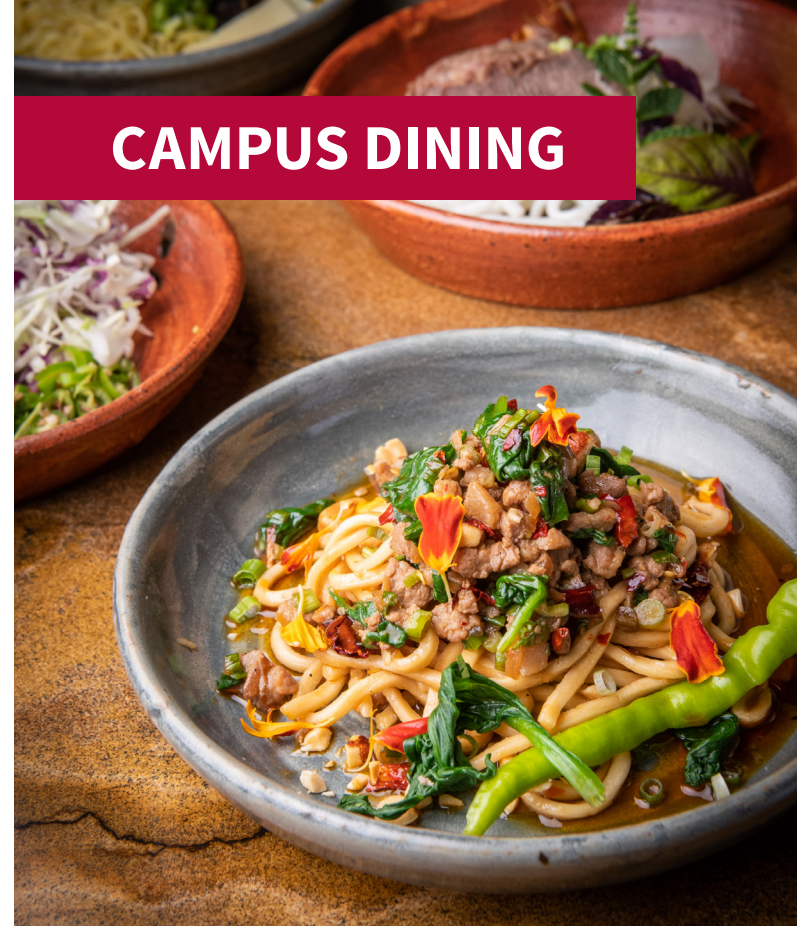
The Graduate Student Gateway gradgateway.stanford.edu is a one-stop resource for incoming grad students providing important information before and after your arrival.

STUDENTS WITH SCHOOL-AGED CHILDREN

The Palo Alto Unified School District (PAUSD) is one of the top districts in the United States, so it can be competitive to secure a space in the schools near campus for your child.

- You can begin the registration process once you have your apartment address (sent to you by early July) and finalize it after you move in.
- Once you have your address, go to pausd.org/registration/new-student-registration-process for information on how to register your child for school and what documents you need to provide.
- Although you won't have utility bills while living on campus, you can still obtain a bank account and cell phone bill with your new address.
- It is important that you ensure your child has had the appropriate immunizations so registration is not delayed. (Go to pausd.org for details). The TB Risk Assessment form must be completed by a U.S. health professional. International students should plan on doing this as soon as possible after arrival in the U.S.
- There is a small possibility that there will not be space at the closest school to your home. If so, you will be assigned to another PAUSD school and have priority to move to the closest one when space is available.

CAMPUS DINING



R&DE Cafés & Dining Halls

R&DE cafés – R&DE Stanford Hospitality & Auxiliaries continues to offer essential to-go meal services to the Stanford campus, consistent with all health and safety requirements. The Market at Munger, The Axe & Palm and EVGR Marketplace are open for students, faculty and staff. We are committed to providing a safe retail environment for our customers and staff with increased cleaning, disinfecting and safety protocols. We offer convenient contact-free shopping and meal pre-order with our mobile app and provide grocery delivery and curbside pick-up options. For R&DE café and market locations and hours visit rde.stanford.edu/hospitality/locations.

The **EVGR Pub & Beer Garden** is coming this fall to the EVGR Pavilion, at the end of Building 2 (C). You can enjoy delicious, freshly-made meals and snacks in our indoor dining area or the spacious beer garden. You can also stop by the bar to sample the selection of beers and wines. The pub includes a working brewery where students can take beer-making class.

Cardinal Dollars are accepted at all R&DE retail locations and Stanford students pay no sales tax on meal purchases when presenting their valid student ID at time of service. Save nearly 20% by frequenting Stanford-operated retail locations. Proceeds from R&DE retail locations help offset increases in room and board, and support student programs. Visit cardinaldollars.stanford.edu.

Graduate students may also eat at any of the **dining halls** open across campus. For a list of dining hall locations and hours visit dining.stanford.edu. R&DE Stanford Dining's CleanDining program provides students with reassurance of the safety of their dining experience with a focus on enhanced cleaning and safety protocols. Our award-winning dining services include:

- High-quality, seasonal, made from scratch, wholesome meals served for breakfast, lunch and dinner. All dining halls offer fresh salads, soups, healthy entrées and grilled specials, fresh fruits and locally grown vegetables.
- A daily variety of delicious and nutritious options including vegetarian, vegan, gluten-free, kosher, halal, and allergy-friendly meals.
- Accommodations for food allergies, sensitivities, and special dietary needs are offered through our Food Allergies @Stanford program.
- Monday-Friday continuous dining is offered at AFDC and Lakeside dining hall.
- Cultural dinner celebrations, like Día de Los Muertos, Lunar New Year, and Mardi Gras, in the dining halls throughout the year.
- We encourage you to discuss your individual needs with R&DE Stanford Dining's nutritionists at nutritionist@stanford.edu, as they are here to help make it easy to eat well at Stanford.

Graduate students can save by purchasing meal blocks. Visit rde.stanford.edu/dining/meal-plans for more information.

2021-22 MOVE-IN DATES

QUARTER	DATE	STUDENT
Autumn	August 6, 2021	Students with school-age children
	August 13, 2021	Pre-clinical MD and MSPA students
	August 23, 2021	Early arrival option for all students
	August 23, 2021	First-year law students
	August 27, 2021	Early arrival option for all students
	September 3, 2021	Early arrival option for all students
	September 8, 2021	Residents of the GSB Residences
	September 10, 2021	All students
Winter	December 31, 2021	All students
Spring	March 26, 2022	All students
Summer	June 18, 2022	All students



CONTACT INFORMATION

R&DE Student Housing Assignments

408 Panama Mall, Suite 101, Stanford, CA 94305
studenthousing.stanford.edu
(650) 725-2810

Note: Our offices at Panama Mall are currently closed and staff are accessible by phone, email or ServiceNow requests.

For questions, submit a ServiceNow request at stanford.service-now.com/services

Bechtel International Center

bechtel.stanford.edu

For questions relating to issuance of 1-20s/DS-2019s, applications for visas and other immigration related questions

Community Housing

offcampus.stanford.edu

communityhousing@stanford.edu

Graduate Life Office

glo.stanford.edu

(650) 736-7078

Office of Accessible Education

oae.stanford.edu

(650) 723-1066

Office of the Senior Associate Vice Provost for R&DE

rde.stanford.edu

(650) 721-2956

R&DE Student Housing Front Desks

rde.stanford.edu/studenthousing/housing-front-desks

R&DE Stanford Dining

dining.stanford.edu

(650) 723-4751

R&DE Stanford Hospitality & Auxiliaries

hospitality.stanford.edu

cardinaldollars.stanford.edu

(650) 725-1510

Stanford Guest House

guesthouse.stanford.edu

(650) 926-2800

Visitor Information

stanford.edu/dept/visitorinfo

(650) 723-2560

Parking & Transportation

transportation.stanford.edu

(650) 723-9362

