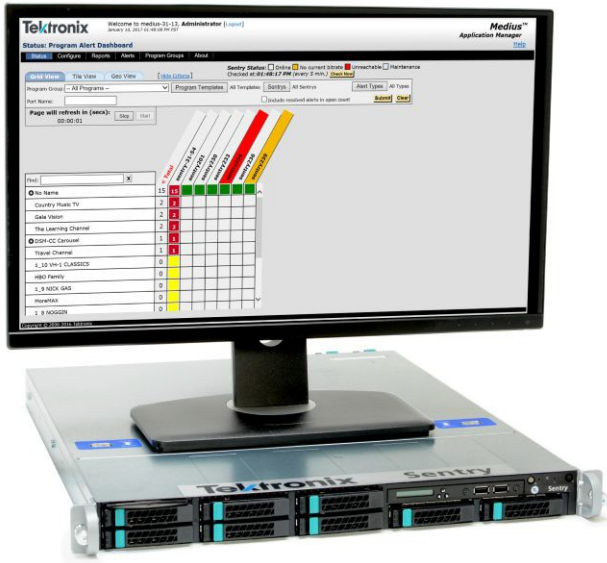


# Video Quality Monitors

## Medius Application Manager • VNM-MED2 Datasheet



Medius offers an advanced reporting package that is particularly helpful in capturing detailed QoE information that quickly highlights the top offending programs and/or locations. The reporting capabilities allow each user to generate customized reports that provide as much or as little detail as required, from monthly high-level reports for executive staff to immediate notices for technicians as incidents occur.

### Features and benefits

- Consolidate data from multiple Sentry units
- Centralized alarm reporting
- Historical reporting and graphing
- Alert filtering and resolution tracking
- User-defined reporting template
- Custom reports
- Customizable dashboard display

- Ability to upgrade multiple Sentry units
- Error second and program availability reporting

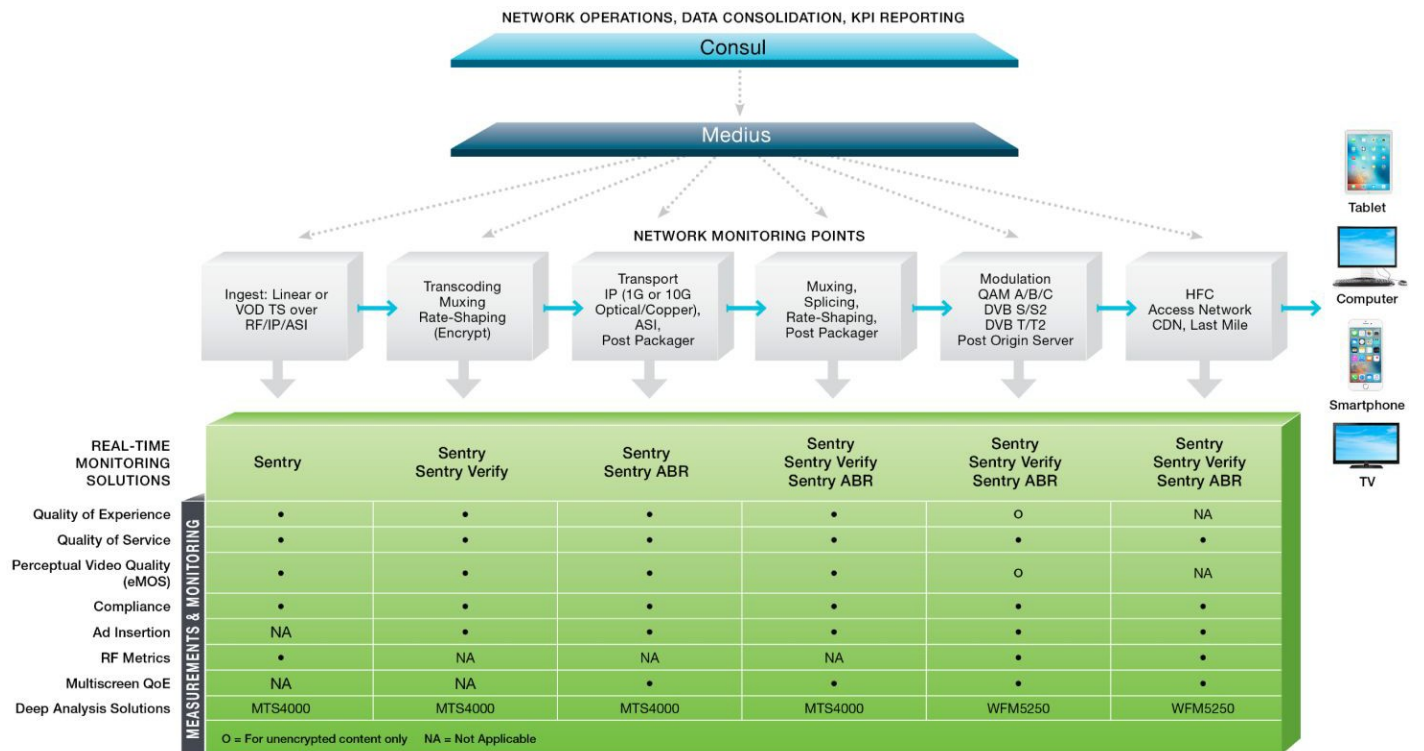
### Applications

- Multiple-view alert dashboard reporting
- QoE reporting
- Automated report generation and email
- Single point for NMS integration
- Program statistics and availability reporting

### Monitor your entire network with rich graphs and an easy-to-use Web-based interface

Medius is ideal for Network Operation Centers (NOCs) and provides a single interface for consolidated status, alerts, and reports from multiple Sentry and/or Sentry Verify, Sentry Assure, and Sentry Edge units across the network.

The complexity of today's networks makes detecting, evaluating, reporting, and resolving subscriber audio and video QoE impacting events a costly and time-consuming headache. Medius provides operators with an alert dashboard that takes the guesswork out of error detection by quickly and accurately reporting and diagnosing video and audio issues occurring anywhere in the network. The alert dashboard includes a geographical view that displays all of the monitoring points on a map, showing which of them have alerts to quickly highlight problem areas or regions; a grid view that shows a program's alert status across all monitoring points for fast identification and repair of the source locations having video and audio problems; and a tile view that provides a quick snapshot of the alert status of all programs or services and quickly highlights which programs need the most attention. This functionality dramatically reduces the number of technicians – and the time they spend – solving problems. By streamlining – or entirely eliminating in many cases – the need for the traditional “process of elimination” methodology, operators can dramatically reduce operational costs while ensuring subscribers enjoy a premium quality of experience (QoE).



Medius™ offers video service providers an effective way of managing and aggregating status, alerts, and reports from multiple Sentry®, Sentry Verify™, and Sentry Edge™ units deployed throughout a network.

## Specifications

### Platform Characteristics

<b>Browser Support</b>	Firefox, Safari, and Internet Explorer
------------------------	--

---

<b>MPEG/IP Input Port</b>	1000BASE-T Ethernet interface
---------------------------	-------------------------------

---

<b>Management Port</b>	1000BASE-T Ethernet interface
------------------------	-------------------------------

---

### Physical Characteristics

#### Dimensions

<b>Height</b>	44 mm (1.73 in)
---------------	-----------------

<b>Width</b>	437 mm (17.2 in)
--------------	------------------

<b>Depth</b>	600 mm (29.5 in)
--------------	------------------

---

<b>Weight (net)</b>	12.4 kg (27 lb.)
---------------------	------------------

---

<b>Power Requirements</b>	100-240 V AC, 50-60 Hz
---------------------------	------------------------

---

### Environmental Characteristics

#### Temperature

<b>Operating</b>	+10°C to +35°C, 30°C per hour maximum gradient
------------------	--

Temperature of the intake air at the front and sides of the instrument

<b>Non-operating</b>	-20°C to +60°C, 30°C per hour maximum gradient
----------------------	--

---

<b>Power</b>	4.0-1.7 A maximum, 100 - 240 V, 50/60 Hz
--------------	--

The maximum power consumption for any board combination measured is 175 W at 120 V by safety test

---

## Ordering Information

### Models

VNM-MED2                      Medius Application Manager

### Power Plug Options

Opt. A0	North America power plug (115 V, 60 Hz)
Opt. A1	Universal Euro power plug (220 V, 50 Hz)
Opt. A2	United Kingdom power plug (240 V, 50 Hz)
Opt. A3	Australia power plug (240 V, 50 Hz)
Opt. A4	North America power plug (240 V, 50 Hz)
Opt. A5	Switzerland power plug (220 V, 50 Hz)
Opt. A6	Japan power plug (100 V, 50/60 Hz)
Opt. A10	China power plug (50 Hz)
Opt. A11	India power plug (50 Hz)
Opt. A12	Brazil power plug (60 Hz)
Opt. A99	No power cord



**For Further Information.** Telestream maintains a comprehensive, constantly expanding collection of application notes, technical briefs and other resources to help engineers working on the cutting edge of technology. Please visit [www.telestream.net/video](http://www.telestream.net/video) for sales and support contacts.

Copyright © 2019 Telestream, LLC and its Affiliates. All rights reserved. Telestream products are covered by U.S. and foreign patents, issued and pending. Information in this publication supersedes that in all previously published material. Specification and price change privileges reserved. TELESTREAM is a registered trademark of Telestream, LLC. All other trade names referenced are the service marks, trademarks, or registered trademarks of their respective companies.

29 Jun 2017 2CW-61218-0

