

Detailed Results

The table below shows the aggregated data entered for each region, district, sub-district and community. Click on a location to drill down to view the statistics for the locations below it.

At a glance **Detail**

Arm: Any | PDM: 9 month PDM | PBO Nets: All Nets | Sort by: Location

Presence | Coverage | Usage | **Condition** | Miscellaneous data | Comments | Accountability

Health sub-district	AMF Nets										Total	Very Good	
	Total	#	%	#	%	#	%	#	%	Rating		#	%
Summary →	77,737	44,312	57	24,142	31	7,713	10	1,570	2	54	15,033	7,462	50
1.6 Rubanda West	3	3	100	0		0		0		100	0	0	0
3.1 Isingiro South	4,585	3,075	67	986	22	449	10	75	2	57	160	102	64
3.2 Bugangaizi West	5,162	2,453	48	1,690	33	804	16	215	4	48	213	106	50
3.3 Nyabushozi	3,908	2,666	68	971	25	213	5	58	1	58	408	231	57
3.4 Bukonzo East	935	457	49	404	43	63	7	11	1	54	228	124	54
3.5 Busongora South	6,188	3,463	56	1,999	32	597	10	129	2	54	82	41	50
3.6 Bufumbira South	5,715	3,821	67	1,586	28	213	4	95	2	58	1,248	737	59
3.7 Buyaga West	6,229	2,694	43	2,355	38	994	16	186	3	49	5,563	2,458	44
3.8 Kajara	2,501	1,929	77	410	16	148	6	14	1	65	64	47	73
3.9 Bugahya	5,396	3,110	58	1,728	32	432	8	126	2	54	110	61	55
3.10 Ibanda	6,295	4,064	65	1,775	28	413	7	43	1	58	339	153	45
3.11 Buhaguzi	7,842	3,586	46	3,006	38	1,015	13	235	3	50	587	249	42
3.12 Mwenge South	9,235	5,764	62	2,275	25	1,039	11	157	2	55	113	84	74
4.1 Kasese Mc	1,237	839	68	287	23	62	5	49	4	55	1,203	816	68
4.2 Burahya	2,213	1,448	65	508	23	232	10	25	1	57	241	114	47
4.3 Buyaga East	1,586	713	45	555	35	282	18	36	2	49	122	45	37
4.4 Bwamba	2,057	955	46	786	38	259	13	57	3	50	1,843	843	46
4.5 Hoima Mc	1,197	571	48	442	37	160	13	24	2	51	12	6	50
4.6 Katerera	636	281	44	278	44	74	12	3	0	53	52	25	48
4.7 Busongora North	368	218	59	139	38	9	2	2	1	58	43	3	7
4.8 Mwenge North	566	406	72	69	12	85	15	6	1	57	9	9	100
4.9 Bunyaruguru	662	335	51	289	44	36	5	2	0	56	4	2	50
4.10 Buhweju	1,023	681	67	304	30	29	3	9	1	59	787	521	66
4.11 Rukungiri Mc	492	208	42	224	46	53	11	7	1	51	458	197	43
4.12 Bukonzo West	2,865	1,157	40	1,432	50	270	9	6	0	53	1,181	478	40
5.5 Bushenyi-Ishaka Mc	3	3	100	0		0		0		100	3	3	100
5.6 Sheema South	3	2	67	1	33	0		0		64	0	0	0
5.7 Kazo	5	2	40	3	60	0		0		55	0	0	0

Detailed Results

The table below shows the aggregated data entered for each region, district, sub-district and community. Click on a location to drill down to view the statistics for the locations below it.

At a glance		Detail				
Arm	PDM	PBO Nets	Sort by			
Any -	9 month PDM -	All Nets -	Location -			
Presence	Coverage	Usage	Condition	Miscellaneous data	Comments	Accountability
Health sub-district	Sleeping spaces			People		
	#	Covered	%	#	Covered	%
Summary →	93,726	83,161	90	175,435	150,486	88
1.6 Rubanda West	2	3	100	5	5	100
3.1 Isingiro South	5,369	4,684	88	9,643	8,396	89
3.2 Bugangaizi West	7,045	6,215	89	13,615	11,322	86
3.3 Nyabushozi	5,019	4,426	87	8,886	7,413	84
3.4 Bukonzo East	1,060	934	90	2,026	1,770	90
3.5 Busongora South	6,906	6,189	90	13,725	11,781	87
3.6 Bufumbira South	6,922	6,165	92	13,285	11,433	90
3.7 Buyaga West	6,870	6,120	91	13,728	12,094	90
3.8 Kajara	3,420	2,869	87	5,941	4,602	81
3.9 Bugahya	6,708	5,908	91	12,416	10,450	87
3.10 Ibanda	7,482	6,630	90	13,650	12,581	95
3.11 Buhaguzi	8,641	8,067	94	16,125	13,859	88
3.12 Mwenge South	10,879	9,519	88	20,522	17,562	88
4.1 Kasese Mc	1,321	1,210	92	2,379	2,155	91
4.2 Burahya	3,130	2,442	77	5,475	4,533	86
4.3 Buyaga East	1,832	1,572	86	3,403	2,729	82
4.4 Bwamba	2,229	2,169	95	4,184	3,656	88
4.5 Hoima Mc	1,376	1,269	92	2,167	1,769	84
4.6 Katerera	715	647	93	1,371	1,160	86
4.7 Busongora North	452	368	81	803	618	77
4.8 Mwenge North	603	592	94	1,204	1,108	93
4.9 Bunyaruguru	756	733	97	1,398	1,233	88
4.10 Buhweju	1,270	1,031	83	2,277	1,936	90
4.11 Rukungiri Mc	508	491	94	884	771	87
4.12 Bukonzo West	3,174	2,872	91	6,255	5,484	89
5.5 Bushenyi-Ishaka Mc	3	4	100	7	5	71
5.6 Sheema South	3	4	100	7	7	100
5.7 Kazo	6	5	83	11	10	91
5.10 Kashari	2	2	100	4	3	75
5.11 Rubaga	6	6	100	5	5	100

Detailed Results

The table below shows the aggregated data entered for each region, district, sub-district and community. Click on a location to drill down to view the statistics for the locations below it.

At a glance **Detail**

Arm: Any - PDM: 9 month PDM - PBO Nets: All Nets - Sort by: Location -

Presence Coverage Usage Condition Miscellaneous data Comments Accountability

Households		Sleeping Spaces		People		AMF Nets													
						Nets Received		Presence		Hung		Present not hung		Missing		Worn out/ not usable			
#	%	#	#/hh	#	#/ss	#	%	#	%	#	%	#	%	#	%	#	%		
34,968	76	93,726	2.68	175,435	1.87	98,977	95	80,347	81	13,727	14	3,333	3	1,570	2				
1	1	2	2.00	5	2.50	3	100	2	67	1	33	0	0	0	0				
1,931	84	5,369	2.78	9,643	1.80	5,451	95	4,379	80	796	15	201	4	75	1				
2,874	91	7,045	2.45	13,615	1.93	7,643	94	6,130	80	1,086	14	212	3	215	3				
1,650	84	5,019	3.04	8,886	1.77	5,045	96	4,302	85	530	11	155	3	58	1				
348	95	1,060	3.05	2,026	1.91	1,116	97	932	84	155	14	18	2	11	1				
2,405	87	6,906	2.87	13,725	1.99	7,521	94	6,062	81	1,028	14	302	4	129	2				
2,718	92	6,922	2.55	13,285	1.92	7,508	96	5,856	78	1,347	18	210	3	95	1				
2,800	95	6,870	2.45	13,728	2.00	7,670	95	6,044	79	1,224	16	216	3	186	2				
1,201	93	3,420	2.85	5,941	1.74	3,410	97	2,703	79	602	18	91	3	14	0				
2,508	91	6,708	2.67	12,416	1.85	7,318	93	5,602	77	1,191	16	399	5	126	2				
2,874	87	7,482	2.60	13,650	1.82	7,875	95	6,388	81	1,114	14	330	4	43	1				
3,148	86	8,641	2.74	16,125	1.87	9,067	95	7,796	86	786	9	250	3	235	3				
4,363	87	10,879	2.49	20,522	1.89	11,289	95	9,152	81	1,622	14	358	3	157	1				
411	81	1,321	3.21	2,379	1.80	1,307	95	1,170	90	67	5	21	2	49	4				
1,161	86	3,130	2.70	5,475	1.75	3,009	94	2,394	80	424	14	166	6	25	1				
692	94	1,832	2.65	3,403	1.86	1,929	93	1,549	80	249	13	95	5	36	2				
731	86	2,229	3.05	4,184	1.88	2,520	95	2,000	79	395	16	68	3	57	2				
475	90	1,376	2.90	2,167	1.57	1,390	97	1,178	85	164	12	24	2	24	2				
280	94	715	2.55	1,371	1.92	805	93	652	81	100	12	50	6	3	0				
148	80	452	3.05	803	1.78	430	96	368	86	43	10	17	4	2	0				
240	95	603	2.51	1,204	2.00	701	98	579	83	107	15	9	1	6	1				
302	88	756	2.50	1,398	1.85	787	98	687	87	87	11	11	1	2	0				
484	88	1,270	2.62	2,277	1.79	1,346	95	1,044	78	231	17	62	5	9	1				
181	87	508	2.81	884	1.74	539	97	485	90	38	7	9	2	7	1				
1,030	95	3,174	3.08	6,255	1.97	3,257	98	2,857	88	337	10	57	2	6	0				
1	1	3	3.00	7	2.33	3	100	3	100	0	0	0	0	0	0				
1	0	3	3.00	7	2.33	4	100	4	100	0	0	0	0	0	0				
2	0	6	3.00	11	1.83	6	100	6	100	0	0	0	0	0	0				
1	0	2	2.00	4	2.00	3	100	2	67	1	33	0	0	0	0				

Detailed Results

The table below shows the aggregated data entered for each region, district, sub-district and community. Click on a location to drill down to view the statistics for the locations below it.

At a glance		Detail													
Arm	PDM	PBO Nets	Sort by												
Any	9 month PDM	All Nets	Location												
Presence	Coverage	Usage	Condition	Miscellaneous data	Comments	Accountability									
Health sub-district	Nets Used				Household used				People sleeping under ne						
	Correctly		Not Correctly		Correctly		Not correctly		Children under 5		Children 5 to 18		Pregnant women		O ac
	#	%	#	%	#	%	#	%	#	%	#	%	#	%	#
Summary →	78,841	97	2,444	3	31,840	97	980	3	32,737	22	50,252	33	3,567	2	63,9
1.6 Rubanda West	3	100	0	0	1	100	0	0	1	20	2	40	0	0	
3.1 Isingiro South	4,465	97	127	3	1,765	97	46	3	1,649	20	3,089	37	226	3	3,4
3.2 Bugangaizi West	5,906	97	184	3	2,613	97	83	3	2,819	25	3,449	30	348	3	4,7
3.3 Nyabushozi	4,152	98	78	2	1,499	98	28	2	1,568	21	2,496	34	170	2	3,1
3.4 Bukonzo East	909	98	16	2	324	98	7	2	401	23	550	31	22	1	7
3.5 Busongora South	5,889	97	189	3	2,222	96	82	4	3,084	26	4,022	34	293	2	4,3
3.6 Bufumbira South	5,785	96	229	4	2,379	96	104	4	2,153	19	4,150	36	145	1	4,9
3.7 Buyaga West	5,803	97	166	3	2,575	97	69	3	2,723	23	4,117	34	402	3	4,8
3.8 Kajara	2,732	99	35	1	1,066	98	17	2	917	20	1,651	36	83	2	1,9
3.9 Bugahya	5,644	97	162	3	2,282	97	65	3	2,352	23	3,195	31	254	2	4,6
3.10 Ibanda	6,273	97	170	3	2,603	97	67	3	1,938	15	3,656	29	157	1	6,8
3.11 Buhaguzi	7,802	98	179	2	2,986	98	64	2	3,416	25	4,539	33	364	3	5,5
3.12 Mwenge South	9,137	97	300	3	3,987	97	119	3	3,886	22	5,855	33	403	2	7,4
4.1 Kasese Mc	1,179	98	21	2	395	98	7	2	550	26	707	33	86	4	8
4.2 Burahya	2,205	91	207	9	982	92	84	8	877	19	1,506	33	68	2	2,0
4.3 Buyaga East	1,470	94	93	6	634	94	38	6	671	25	868	32	53	2	1,1
4.4 Bwamba	2,086	97	54	3	690	98	14	2	820	22	1,346	37	181	5	1,3
4.5 Hoima Mc	1,188	100	3	0	450	100	1	0	389	22	540	31	55	3	7
4.6 Katerera	633	98	13	2	267	99	4	1	230	20	415	36	24	2	4
4.7 Busongora North	330	95	18	5	134	95	7	5	162	26	169	27	28	5	2
4.8 Mwenge North	580	98	12	2	229	98	4	2	295	27	339	31	44	4	4
4.9 Bunyaruguru	690	97	19	3	273	98	7	2	215	17	466	38	20	2	5
4.10 Buhweju	903	99	8	1	396	99	6	1	398	21	699	36	18	1	8
4.11 Rukungiri Mc	476	98	10	2	176	98	3	2	105	14	312	40	12	2	3
4.12 Bukonzo West	2,568	94	151	6	901	94	54	6	1,103	20	2,091	38	108	2	2,1
5.5 Bushenyi-Ishaka Mc	4	100	0	0	1	100	0	0	1	20	2	40	0	0	
5.6 Sheema South	4	100	0	0	1	100	0	0	1	14	4	57	0	0	
5.7 Kazo	5	100	0	0	2	100	0	0	1	10	2	20	2	20	

[Home](#) > [PDMs](#) > [Re-visit Analysis](#)

Data Collection Analysis

The table below shows the comparison of main data and revisit data for matched households. All differences are calculated as main data minus revisit data.

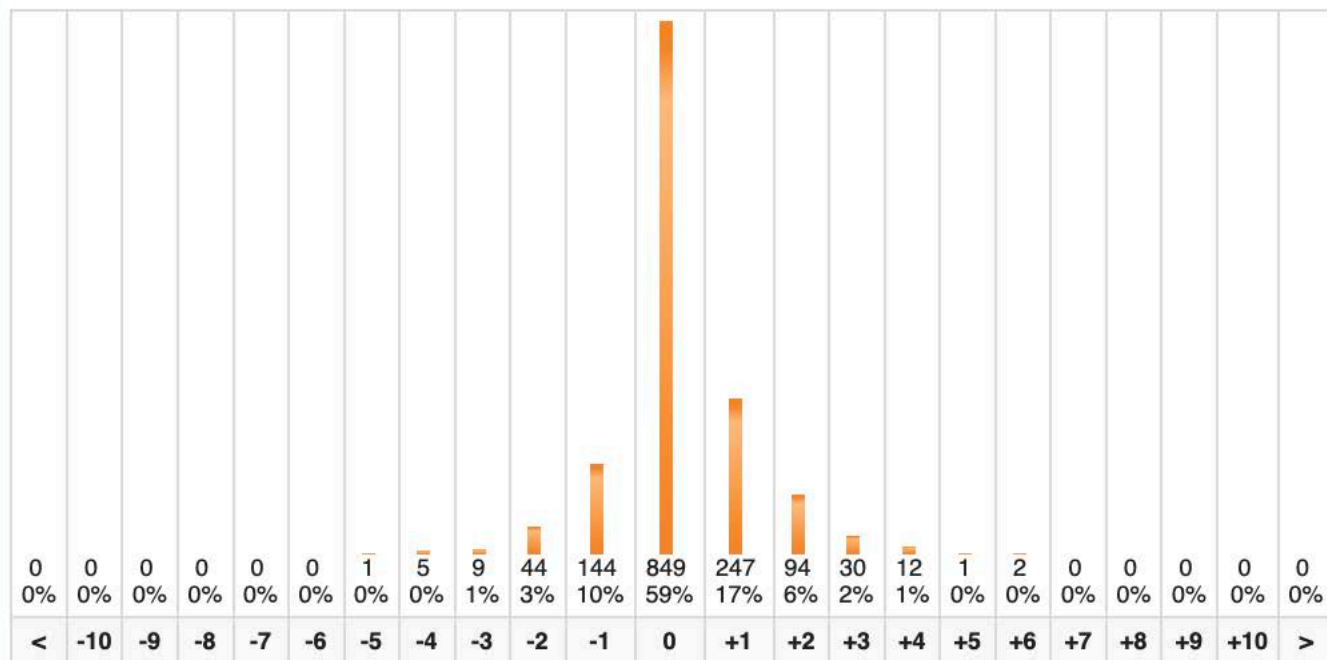
Click on a location to drill down to view the statistics for the locations below it.

Arm PDM [Refresh](#)

Total records entered: 28,820 Revisit records entered: 1,764 (6.1%) Matching records: 1,447 (82.0%)

[Nets Hung](#)[Present Not Hung](#)[Sleeping Spaces](#)[Are Used Correctly?](#)[People In The Household](#)

Region	# HHs Matched	Nets Hung					
		Main	Revisit	Δ	%	$\sigma 1$	$\sigma 2$
Western	1,447	3,206	2,892	+314	+10	0.6	1.08
	1,447	3,206	2,892	+314	+10	0.6	1.08



Region	<	-10	-9	-8	-7	-6	-5	-4	-3	-2	-1	0	+1	+2	+3	+4	+5	+6	+7	+8	+9	+10	>
Western	0	0	0	0	0	0	1	5	9	44	144	849	247	94	30	12	1	2	0	0	0	0	0

[Home](#) > [PDMs](#) > [Re-visit Analysis](#)

Data Collection Analysis

The table below shows the comparison of main data and revisit data for matched households. All differences are calculated as main data minus revisit data.

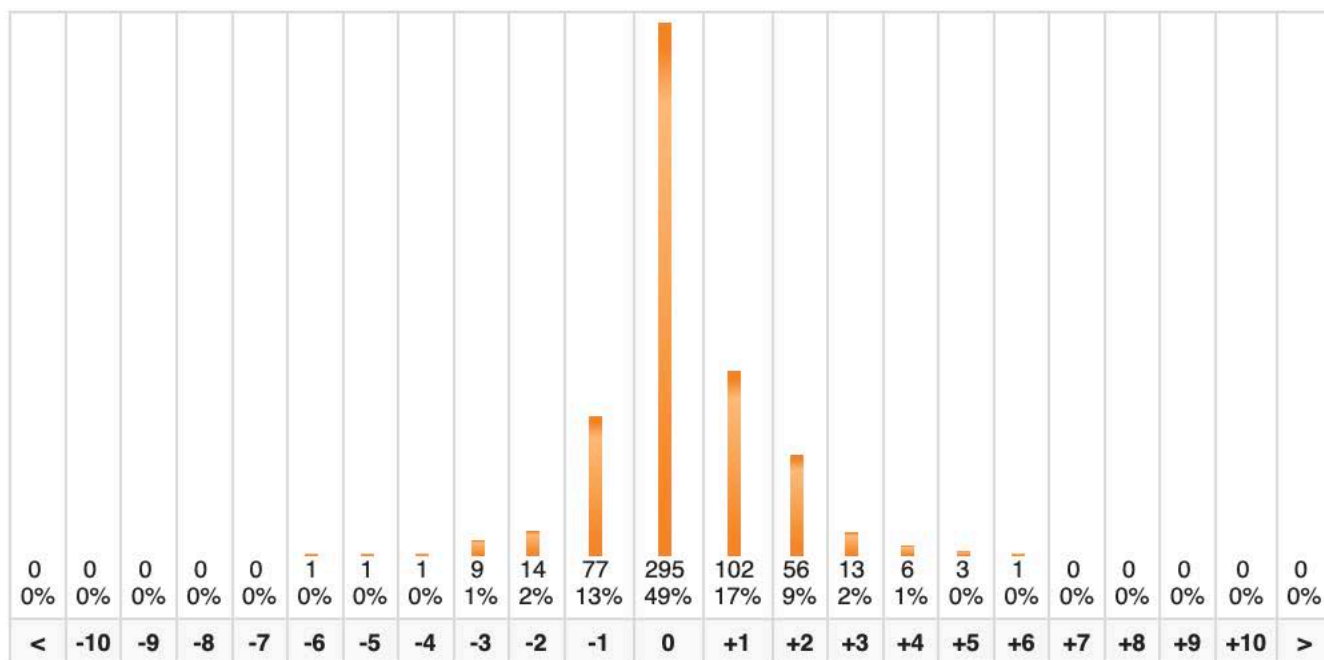
Click on a location to drill down to view the statistics for the locations below it.

Arm PDM [Refresh](#)

Total records entered: 6,135 Revisit records entered: 740 (12.1%) Matching records: 603 (81.5%)

[Nets Hung](#)[Present Not Hung](#)[Sleeping Spaces](#)[Are Used Correctly?](#)[People In The Household](#)

Region	# HHs Matched	Nets Hung					
		Main	Revisit	Δ	%	$\sigma 1$	$\sigma 2$
Western	603	1,420	1,209	+211	+15	0.7	1.25
	603	1,420	1,209	+211	+15	0.7	1.25



Region	<	-10	-9	-8	-7	-6	-5	-4	-3	-2	-1	0	+1	+2	+3	+4	+5	+6	+7	+8	+9	+10	>
Western	0	0	0	0	0	1	1	1	9	14	77	295	102	56	13	6	3	1	0	0	0	0	0