

Oti te Nanekoti

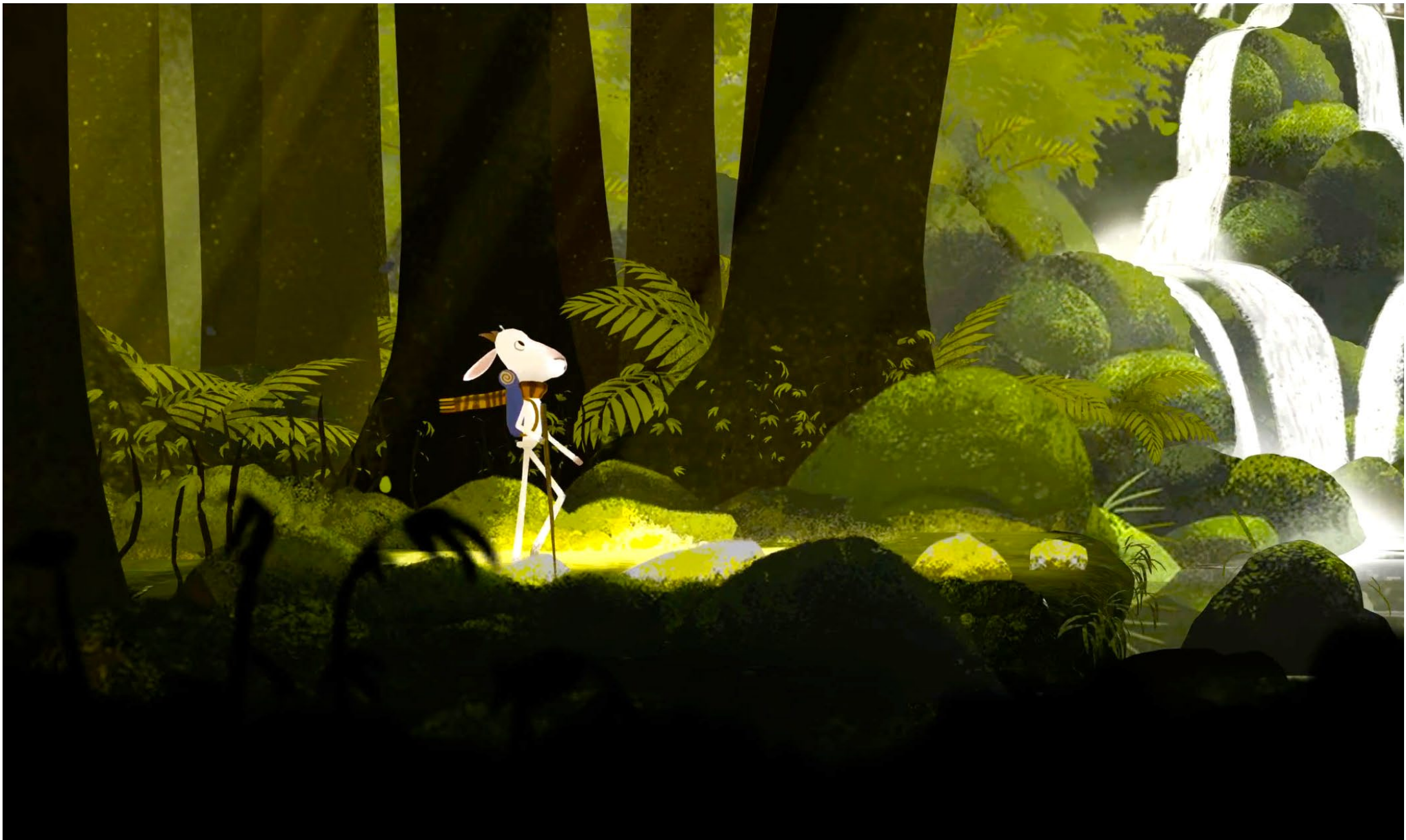
Hei ako i te hunga tamariki kia ngākau atawhai



He rangi mokopuna ki runga i te maunga tū matatea.
Ka hanatu a Oti te Nanekoti ahakoa te mōrearea.



Ka piki, ka kake, nāwai nāwai ka eke.
Kōawaawa he mea whakawhiti. Karahiwihiwi he mea piki.



Mā waenga kauri tupua te haere, tae rawa atu ki te taketake.
E Nane e! Kua rānui kē!? Me wawe ake, me wawe ake.



Ahiahī noa te tōhau-nui, ka hāmoemoe ngā kanohi o Oti.
Ha! He aha tēra e tangi mai rā?! 'Ba ha ha'. He purari hipi anana!



Ki muri toka tāna huna, ka tiro pī atu ki te iwi rā.
He hipi hoihoi, heahea, pīrorirori ana i te kata.



He maero mokemoke tā rātou whakatakē, mōna i hanga rerekē.
Te pūhuruhuru, te anuanu hoki.
Tōna ingoa tapa ko Mohi.



“Tō rerekē hoki” te whakatoī atu a hipi.

“He paruparu tēnā kei tō tikitiki?!”

“Te weriweri i a koe nā, me noho huna kē ki tōna rua.”



Ka kata ngā hipi, “Ba ha ha ha, ha ha ha ha,”
Ka mahara a Oti, kia tū ake rā.

Engari me aha? Me kata? Me kōhete?
Me tohu atu pea, “E kare mā, kia tika kē!”



KATA

Tahuri ki te whārangī 10



WAWAO

Tahuri ki te whārangī 12



KORE NOA IHO

Tahuri ki te whārangī 14



**ME PĀTAI, “KEI TE PAI
RĀNEI KOE?”**

Tahuri ki te whārangī 16

Me huri tuara ā rātou mahi nanakia?
Me pōhiri atu rānei a ia, “E Mohi e, hoake kē tāua.”



Ka tū ake a Oti ka kata, “Tō āhua e Mohi, ka kino te anuheā.”
Ka rongō a Mohi, ka taka ā-roto, he mamae kaikinikini ki tana poho.



Mākūkū ana ōna papa me te hohehohe ake a ngā heahea rā.
Kāore he āwhina i pahawa i tēnā. Tā Oti, he aha hei mahi kē atu māna?

E hoki ki te whārangī 9.



Ka tū ake a Oti, ka karanga atu, “Kāore ana hara ki a koutou!”
“Mēnā he kata tā koutou kimi tēnā tirohia kē te nui o ō puruhi!”



“E kī, e kī!” tā hipi whakahoki. “Tēnā haere mai kia tata, ka korokī.”
Auē! I konā a Oti ka whakaaro rua, he aha anō he ara hei whai kē māna?

E hoki ki te whārangī 9.



Tū ake a Oti, ka whakarongo atu ki ā hipi heahea makamaka taunu.
Kātahi a hipi ka hangareka i te tauhōu, tērā e mātaki mai rā.



“Ei! Pane Paru” tā rātou whakatea. “Tēnā e hoki ki te rua i ara mai ai koe!”
Me aha kē a Oti? Te mamae me whakamahu. Hokia a muri ka karo ai i te raru.

E hoki ki te whārangī 9.



Ka tū ake a Oti, ka huri ki a Mohi ka pātai ake, “Kei te pai rānei koe?”

Ka tumeke te maero rā. Ka kimi, ka rapu he kupu
hei whakamārama i te koa o tōna ngākau.

**ME PĀTAI,
“KEI TE PAI RĀNEI KOE?”**



Ka tū a Oti, ka whakamatakutia ngā hipi, kātahi rātou ka ngōki whakamuri.

Ka mea a Oti, “I wā rātou nei, e Mohi. Hoake kē tāua ki te tihi.”

Ki te tihi anō te haere. Rāua, rāua - kua pūkeke.
Nāwai nāwai ka piki ki te ana o te tūwiri.





Ka whakatata atu rā ki te ngutu o te ana, ka tākirikiri ko te manawa.
E taea ai te tihi, me manawa kai tūtāe, me ngākau tapatahi.



Ka oke te tokorua rā i te ana titiwha, heoi, ka tūpono kite kē i te awatea.
He manomano pūrātoke e iri mai ana. Miharo katoa ana ngā mata.



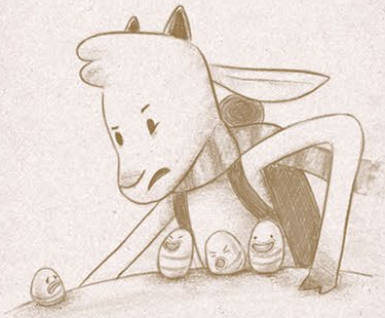
Ha! He aha kē tērā kei te kokonga? He pūrātoke mokepūihi,
tōna hana motuhake he kākāriki.



Ko te kī a tōna iwi, “Pōooooouri atu koe!” “He hanga tupua koe.”

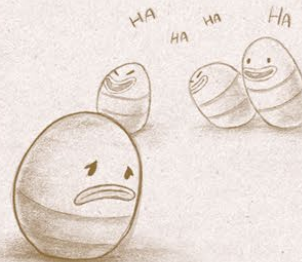
“He kākārīki kē tō kiri.”

“Tōu āhua he hanga māuiui.”



WHAKAPARAHAKO

Tahuri ki te whārangī 24



KORE NOA IHO

Tahuri ki te whārangī 26



WHAKAHOAHOA

Tahuri ki te whārangī 28

Me ihu tū, ka whakangongo atu, ka whai tonu i te ara ki te akitū?
Me huri kē ki a pūrātoke, “Me haere mai anō hoki koe.”



“Tōna tikanga ka ōrangi tō hanga, engari kē he kākāriki horotea.”

Ka kata a manomano pūrātoke, ka tangi hotuhotu a Hana Motuhake.



Ka ohore a Mohi i tō Oti ngākau whakawiri, ka hoki ia ki tana rua weriweri.

Ka pēhea kē a Oti? Kua mahue mai ko tōna kotahi.

E hoki ki te whārangi 23.



Ka heke te pō, ka kōhukihuki ā-roto mō Hana Motuhake me tana mokemoke.

Ka huri te ihu ki waho o te ana, ka tinea-ha! Ko te mura o Hana.



Ka tū a Mohi, ka hāmama ake, “Ha! E Oti, kei te haere koe ki hea?!”
Ka whakaaro rua te nanekoti rā, ka hoki whakamuri, kei hane kē a Hana.

E hoki ki te whārangi 23.



“Pūrātoke mokemoke e, e aha ana koe?”

“Tēnā hoake tātou ki te tihi, ki te kōpae o Kea Whakahīhī.”



Ka mura ake a Hana Motuhake. Ka pō, ka ao, ka awatea.
I konā a Oti ka tahuri whakamuri.
Ko te manomano kē ka numinumi i tā rātou whakatuturi.

Ka tō te rā, ka piki atu a Hana ki te tiripoupou o Oti Nanekoti.
Ka hoake te iwi rā ki te tihi, ko Hana hei hīnātore i te pōuri.



Nō te kātātanga atu ki te pīnakitanga,
kātahi te tihi ka horo, ka tanuku koa! I a haha!





Ka paheke a Oti, a Mohi, a Hana hoki.
Ki hea rātou tau ai?! E aua hoki! Inā te tiwhatiwha o te pōuri.



Kātahi rātou ka tatū iho ki raro, ka rongo i te karanga, “Kumekumea!”
Eeeiii! Ko Hipi tonu! Kua heua ōna wūru, kua whatua hei kupenga.

Ki te taumata whakatutuki ka titiro anō a Oti.
Ko te ara ki tua kua murara i a pūrātoke manomano, whakakaitoa.



Ā hipi me pūrātoke kupu whakatakē, he whakamihi kua huri kē.
Kāhore he hua o te patu wairua, kei mokemoke, kei whakamā.



Ka noho a Oti ka kai timotimo, ka huri whakamuri rā tana titiro.
Ahakoa te mōrearea i eke tonu ia i te maunga tū matatea.



Ki tōna taha ko ōna hoa haere, ko Mohi rāua ko Hana Motuhake.
Mei kore ake ko hipi me pūrātoke, ko te hua o te aroha i toitū kē.





Pānuihia te kōrero paki ā-tihi mō Oti te Nanekoti ki te reo Māori, te reo Pākehā anō hoki.

www.OatTheGoat.co.nz | www.OtiTeNanekoti.co.nz