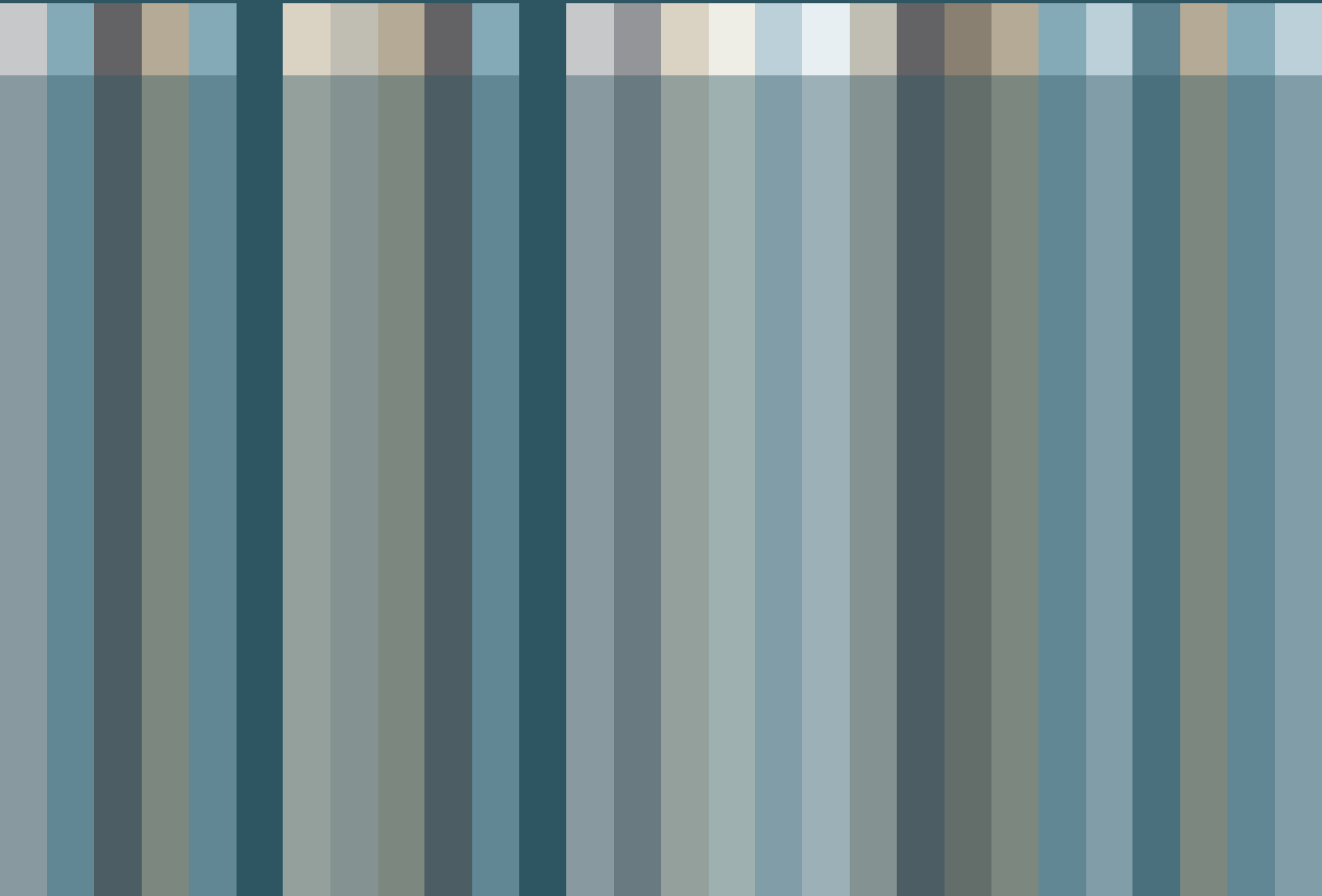


2022 Publications and Products

INFORMATION FOR INSTITUTIONS



Building on a tradition of editorial excellence, the JAMA Network™ brings *JAMA*® together with *JAMA Network Open*™ and 11 specialty medical journals to offer enhanced access to the research, reviews, and opinions shaping the future of medicine. Through a variety of innovative tools, the JAMA Network provides the insights that matter most to medical research and practice.

Online

The JAMA Network website, jamanetwork.com, connects information on the topics that interest you, revealing related articles from across the network on every page. Features include video, audio, CME activities, and more. An innovative search engine that targets concepts as opposed to key words makes finding and filtering information faster and more efficient. The JAMA Network's open access journals, *JAMA Network Open* and *JAMA Health Forum*, are published entirely online.

Print

From *JAMA Dermatology* to *JAMA Surgery*, JAMA Network journals are the authoritative source for cutting-edge research and thought-provoking opinions across medical specialties.

Mobile

Read JAMA Network content anytime, on any device. All JAMA Network websites are optimized for a pleasant reading experience on any mobile device.

Contents

JAMA Network

JAMA®.....	2
JAMA Network Specialty Journals	3
JAMA Network Online Features.....	8
JAMA Network CME Resources	9
JAMA Network Topic Resources	10
JAMA Network Backfiles	11

Pricing

JAMA Network Site Licenses.....	13
2022 Site License Pricing	14
JAMA Network Backfiles Pricing	16
2022 Institutional Print Pricing	18
Missing Issue & Sales Tax Information.....	19

JAMA[®] Since 1883, physicians and health care professionals around the world have turned to *JAMA* for groundbreaking research and insightful commentary from leaders in medicine and health care.

As one of the most widely circulated peer-reviewed general medical journals in the world, *JAMA* provides readers with essential medical information and a unique forum for discussions shaping the future of medical practice and public health.

FEATURES INCLUDE

Original Research

Reports of authoritative, cutting-edge, and practice-changing research.

Viewpoints

Timely opinions of leading scholars on a broad range of contemporary medical issues.

JAMA Clinical Challenge

Assess a patient case, study the image(s), and take a quiz to see if you've chosen the best course of action.

Author Audio Interviews

Listen to the author discuss the study to gain a deeper understanding of its objectives, findings, and implications.

 jama.com

US Preventive Services Task Force

Clinical recommendations and evidence reports from the USPSTF are now published regularly in *JAMA*.

JAMA Clinical Guidelines Synopsis

Concise summaries of guidelines recommendations in a format designed for busy physicians.

Clinical Review & Education

Timely, evidence-based Reviews providing clinically useful therapeutic and diagnostic insight.

JAMA Patient Page

Key facts on a wide variety of health topics, presented in patient-friendly terms with links to resources.

Visual Abstracts

Now available for selected research articles published in *JAMA*, visual abstracts offer helpful visual summaries of the information found in article abstracts.

Online Features at jama.com

- Weekly CME activities that offer *AMA PRA Category 1 Credit*[™]
- PDF article downloads
- Email alerts
- Key Points that offer a concise, 3-part summary of original research content
- Split-screen view displaying article text alongside figures, tables, and references
- Relevant links to PubMed and other resources
- Regular podcasts including JAMA Medical News, JAMA Clinical Reviews, and JAMA Editors' Summary
- PowerPoint image downloads

Interim Editor in Chief: Phil B. Fontanarosa, MD, MBA

2020 Impact Factor: 56.3

Frequency: (Weekly) 48 issues per year

Print ISSN: 0098-7484

Online ISSN: 1538-3598

Published Since: 1883

2022 Volume Number: 327-328

COUNTER-compliant Usage Statistics: Yes

Athens/Shibboleth Authentication: Available



JAMA Health Forum™

A new open access health policy journal

Editor: John Z. Ayanian, MD, MPP,
University of Michigan

Deputy Editor: Melinda B. Buntin, PhD,
Vanderbilt University School of Medicine

Online ISSN 2689-0186



JAMA Health Forum is a new, peer-reviewed, open access journal that addresses health policy and strategies affecting medicine, health, and health care. The journal publishes original research and opinion about national and global health policy; innovative approaches to health care delivery; and health care economics, access, quality, safety, equity, and reform. Health policy leaders contribute timely and insightful commentary via the JAMA Forum, and news briefs cover major reports released by government agencies, foundations, health policy think tanks, and other policy-focused organizations.

As an open access journal, *JAMA Health Forum* will be fully available for your patrons to read, regardless of your site license status.

***JAMA Health Forum* includes:**

- Timely perspectives on national and global health policy
- Discussions on issues in health care strategy and delivery
- Insights on health care economics, quality, safety, equity, and reform
- News briefs on major reports released by government agencies, foundations, and think tanks
- The JAMA Forum, an ongoing blog by leaders in health policy

Learn more at

 jamahealthforum.com

JAMA Cardiology

Editor: Robert O. Bonow, MD, MS
Print Frequency: 12 issues per year
Print ISSN: 2380-6583
Online ISSN: 2380-6591
Published Since: 2016
2022 Volume Number: 7

Description

JAMA Cardiology is a peer-reviewed journal dedicated to publishing exceptional original research, state-of-the-art reviews, and informative opinion that will advance the science and practice of cardiology, enhance cardiovascular health, and inform health care policy.

Features Include

- Leading clinical Research
- Clinically relevant Reviews
- Lively Opinion pieces
- Enhanced reader access through related commentary, author audio interviews, email alerts, Facebook, Twitter, other social media, and Topic Collections
- Patient Page
- Cardiovascular Images—Unusual or striking examples of clinical images

Indexed in: PubMed and MEDLINE

2020 Impact Factor

14.7, ranking high among cardiology journals

 jamacardiology.com

JAMA Dermatology

Editor: Kanade Shinkai, MD, PhD
Print Frequency: 12 issues per year
Print ISSN: 2168-6068
Online ISSN: 2168-6084
Published By AMA Since: 1920
2022 Volume Number: 158

Description

JAMA Dermatology publishes peer-reviewed information concerning a broad range of issues relating to the skin and its conditions — clinical studies, surgical therapeutics, techniques, and breakthrough treatments.

Features Include

- Clinical Evidence Synopsis
- Clinicopathological Challenge
- Patient Page
- Clinical Guideline Synopsis
- Images in Dermatology
- Consensus Statement

2020 Impact Factor

10.3, one of the highest ranking among dermatology journals

 jamadermatology.com

JAMA Internal Medicine

Editor: Rita F. Redberg, MD, MSc
Print Frequency: 12 issues per year
Print ISSN: 2168-6106
Online ISSN: 2168-6114
Published Since: 1908
2022 Volume Number: 182

Description

JAMA Internal Medicine delivers high-impact, peer-reviewed advances in internal medicine focusing on original research, reviews, and controversies in the field. Covering a broad range of topics, the journal publishes essential information for informed decision-making.

Features Include

- Original Investigations — Randomized trials, studies of screening and diagnostic tests, intervention studies, cohort studies, and cost-effectiveness studies covering diagnostic and therapeutic advances
- Less Is More® — Cases in which less health care results in better health
- Perspectives
- Challenges in Clinical Electrocardiography
- Teachable Moment—Trainees comment on the harms that can result from medical overuse or from underuse of needed medical interventions
- Evidence to Practice—Evidence reports for clinicians

2020 Impact Factor

21.9, ranking high among internal medicine journals

 jamainternalmedicine.com

JAMA Neurology

Editor: S. Andrew Josephson, MD
Print Frequency: 12 issues per year
Print ISSN: 2168-6149
Online ISSN: 2168-6157
Published Since: 1959
2022 Volume Number: 79

Description

JAMA Neurology provides an international perspective on a wide range of topics from leading centers of neurological research through peer-reviewed information, forums, and features.

Features Include

- Clinical Trials — High-impact, peer-reviewed articles with direct clinical relevance
- Clinical Challenges
- Reviews
- Images in Neurology
- Author Interviews
- Patient Page
- On the Brain—Personal stories from neurologists

2020 Impact Factor

18.3, ranking high among all neurology journals

 jamaneurology.com

JAMA Oncology

Editor: Mary L. (Nora) Disis, MD
Print Frequency: 12 issues per year
Print ISSN: 2374-2437
Online ISSN: 2374-2445
Published Since: 2015
2022 Volume Number: 8

Description

JAMA Oncology features pivotal new findings and fosters productive debate among academicians, clinicians, and trainees in the fields of medical, surgical, and radiation oncology.

Features Include

- Leading clinical Research
- Timely Viewpoints and clinically relevant Reviews
- Online First articles published weekly
- Clinical Challenges
- Useful article types such as the Patient Page
- Podcasts and author interviews that summarize key research findings

Indexed in: PubMed, MEDLINE, and Web of Science

2020 Impact Factor

31.8, one of the highest ranking among oncology journals

 jamaoncology.com

JAMA Ophthalmology

Editor: Neil Bressler, MD
Print Frequency: 12 issues per year
Print ISSN: 2168-6165
Online ISSN: 2168-6173
Published By AMA Since: 1929
2022 Volume Number: 140

Description

JAMA Ophthalmology draws on academic, scientific, and clinical experts for a broad range of clinical and laboratory science articles, Clinical Trials, Reviews, Commentaries, and a wide range of special features.

Features Include

- Journal Club
- Clinical Challenges
- New Instrument
- Ophthalmic Images
- Surgical Technique

2020 Impact Factor

7.4, one of the highest ranking among ophthalmology journals

 jamaophthalmology.com

ALL JAMA NETWORK JOURNALS INCLUDE

- CME activities that offer *AMA PRA Category 1 Credit*[™]
- PDF downloads
- Online First articles
- Email alerts
- Relevant links to PubMed and other resources
- Author interviews
- Viewpoints
- Video supplements
- PowerPoint image downloads
- RSS feeds
- Supplementary online-only content
- Topic collections that span the JAMA Network
- COUNTER-compliant usage statistics
- Athens and Shibboleth Authentication

JAMA Otolaryngology–Head & Neck Surgery

Editor: Jay F. Piccirillo, MD
Print Frequency: 12 issues per year
Print ISSN: 2168-6181
Online ISSN: 2168-619X
Published Since: 1925
2022 Volume Number: 148

Description

JAMA Otolaryngology–Head & Neck Surgery publishes clinical and basic research from around the world on diseases of the head and neck. It is the official publication for the American Head and Neck Society and the American Academy of Facial Plastic and Reconstructive Surgery, Inc.

Features Include

- Original Investigations
- Clinical Challenges
- Viewpoints
- Advances in Diagnosis and Treatment Review

2020 Impact Factor

6.2, the highest ranking otolaryngology journal in the world

 jamaotology.com

JAMA Pediatrics

Editor: Dimitri A. Christakis, MD, MPH
Print Frequency: 12 issues per year
Print ISSN: 2168-6203
Online ISSN: 2168-6211
Published Since: 1911
2022 Volume Number: 176

Description

JAMA Pediatrics offers original studies, Editorials, systematic Reviews, Commentaries, case studies, and updates on clinical science and practice management, in addition to a variety of special features.

Features Include

- Clinical Challenges
- Online-Only Content
- Journal Club
- Patient Page
- Caring for the Critically Ill Patient

2020 Impact Factor

16.2, the highest ranking pediatric journal in the world

 jamapediatrics.com

JAMA Psychiatry

Editor: Dost Öngür, MD, PhD
Print Frequency: 12 issues per year
Print ISSN: 2168-622X
Online ISSN: 2168-6238
Published Since: 1959
2022 Volume Number: 79

Description

Each month *JAMA Psychiatry* delivers state-of-the-art original studies and diverse commentary on the interplay between psychiatric disorders and physical health, human behavior, and emerging therapies.

Features Include

- Original Investigations
- Neuroscience and Psychiatry
- Reviews
- Editorials
- Clinical Challenges

2020 Impact Factor

21.6, one of the highest ranking among psychiatry journals

 jamapsychiatry.com

Content published weekly online.



JAMA Surgery

Editor: Melina R. Kibbe, MD
Print Frequency: 12 issues per year
Print ISSN: 2168-6254
Online ISSN: 2168-6262
Published Since: 1920
2022 Volume Number: 157

JAMA Network | Open

Editor: Frederick P. Rivara, MD, MPH
Online Publication Frequency: Every weekday
Online ISSN: 2574-3805
Published Since: 2018
2022 Volume Number: 5

Description

JAMA Surgery publishes peer-reviewed research, commentaries, illustrations, and special articles that keep readers up to date on important advances in the field, from surgical techniques to optimizing patient care. It is the official publication for the Association of VA Surgeons, Pacific Coast Surgical Association, and the Surgical Outcomes Club.

Features Include

- Original Investigations
- Invited Commentaries
- Surgical Innovations
- Reviews
- Clinical Challenges
- Guide to Statistics and Methods

2020 Impact Factor

14.8, the highest ranking surgery journal in the world

jamasurgery.com

Description

Guided by the highest standards of peer review and integrity, *JAMA Network Open* publishes research on all aspects of clinical care, health policy, and global health across all health disciplines. As an open access journal, *JAMA Network Open* is free for your patrons to read and does not require a site license to access.

The journal publishes research on a broad range of topics such as critical care medicine, infectious diseases, health informatics, substance use and addiction, emergency medicine, global health, and many more. A full list of topics is available in the For Authors section at jamanetworkopen.com.

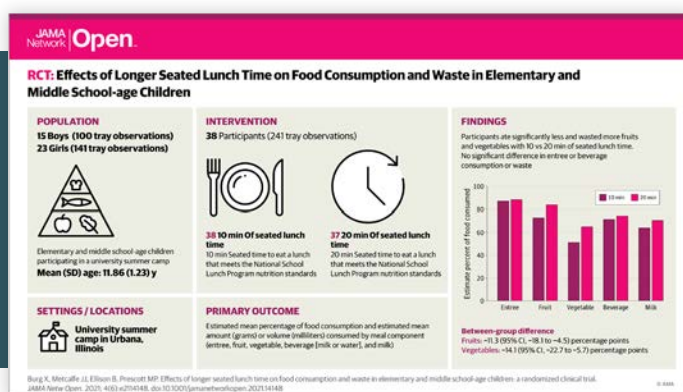
Features Include

- Indexed in: PubMed/MEDLINE, Emerging Sources Citation Index, and the Directory of Open Access Journals
- Immediate access upon publication
- Customized email alerts that suggest new articles based on a reader's interests
- Open access Invited Commentaries that accompany 25% of Research articles

2020 Impact Factor

8.48, one of the highest among general medicine open access journals

jamanetworkopen.com



Visual Abstracts

Helpful illustrations of text abstracts for randomized clinical trials published in *JAMA*, *JAMA Network Open*, and other specialty journals.

JAMA Network Online Features

All JAMA Network sites are fully integrated to offer clinicians and researchers a state-of-the-art user experience.

CONTENT FEATURES

Affinity alerts for JAMA Network Open

Readers can sign up for email alerts about new clinical research and commentary that match their interests.

Weekly Highlights Emails

Email alerts on key topics such as oncology, cardiology, COVID-19, and more, featuring articles from across the JAMA Network.

Online First

All journals publish new content online each week. JAMA Network also offers expedited review and publication for important clinical trials and research to be presented at major meetings.

Key Points

Key Points offers concise, 3-part summaries of original research content.

Altmetrics

View instant, article-level metrics about the digital impact and reach of JAMA Network content in traditional and social media outlets, blogs, public policy documents, postpublication peer-review forums, and online reference managers.

Email Alerts

Readers can choose among alert options, such as topic, author, or search, or sign up to receive tables of contents by email and to be alerted when new articles are released online first.

Podcasts: Listen and Learn

Take JAMA Network on the go with podcasts that explore the latest original research and current clinical topics. Shows include: JAMA Medical News, JAMA Network Editors' Summaries, JAMA Health Forum Editors' Summary, and more. Start listening now at jamanetworkaudio.com or your favorite podcast source..

Multimedia Features

Listen to podcasts, watch videos, or view figures and illustrations that enhance the learning process.

INTERFACE FEATURES

Split-Screen Article View

Move quickly between an article's text and the figures, tables, and references using the split-screen view; it's better than having two monitors side by side.

Mobile-Optimized View

All JAMA Network sites are fully optimized for use on mobile devices. Mobile view is automatically rendered through smartphone and tablet browsers.

Institutional Interface

Institutional administrators can use the Administrator Dashboard to set up and manage a wide range of important institutional account functions:

- Download COUNTER reports.
- Manage access options.
- Add and edit IP addresses.
- View current subscriptions.

Search

Innovative, semantic technology recognizes concepts instead of search terms and produces more targeted, meaningful search results.

New: Resources for Librarians

The all-new Resources for Librarians page offers easy access to helpful tools for current site license customers and anyone looking for more information about JAMA Network products. You will find administrative tools for managing your account, downloadable marketing materials, the latest news, and much more.

JAMA Network CME Resources

JN Learning™

CME and MOC made easy, from a source you trust.

Physicians can earn *AMA PRA Category 1 Credit*™ and MOC with JN Learning from the JAMA Network.® Explore 950+ CME activities based on articles or audio clips from *JAMA*® and the 10 JAMA Network specialty journals.

Experience a fully customized CME platform, including saved searches and email alerts based on topic and state requirements.

JN Learning allows your users to track completed activities, view their full transcript, and download certificates, all from within the site. JN Learning automatically transfers MOC to the ABIM, ABP, ABOHNS, and ABPath MOC programs.

JN Learning is included with your JAMA Network site license subscription. Each user will have complimentary access to 10 CME activities per calendar year. JN Learning is part of the AMA Ed Hub.

Clinical Challenges

Your users can test their diagnostic skills and earn CME/MOC Credit. JAMA Network Clinical Challenges quiz readers on how they would diagnose and treat unusual clinical cases in dermatology, infectious diseases, neurology, oncology, and other medical disciplines. All Clinical Challenges are available on the JN Learning platform.



Explore JN Learning and Clinical Challenges today at jamanetwork.com/learning



CME for Institutional Subscribers With JN Learning

Institutional users are eligible for free CME quizzes that span specialties. To gain access to 10 free CME activities per year, users can visit any JAMA Network article page from within their institution's IP range and follow the prompts to sign in or create a free account.

Catch up on the latest research and clinical topics wherever you are with JAMA Network podcasts. Visit jamanetworkaudio.com.



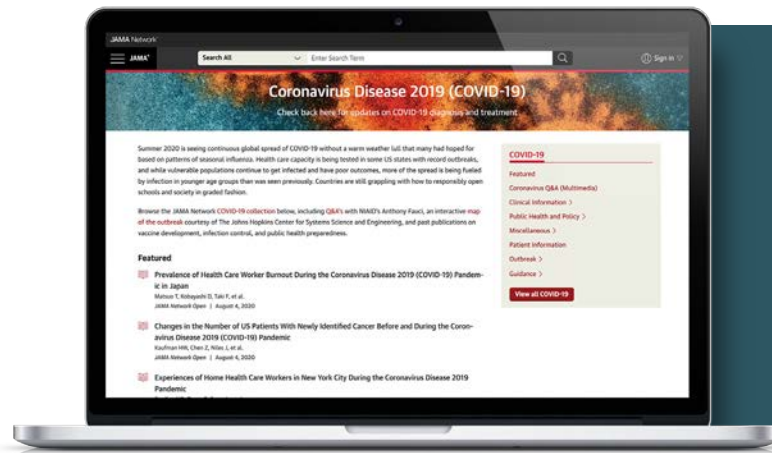
JAMA Network Topic Resources

COVID-19 Resource Center

The latest COVID-19 research, commentary, and video and audio interviews with frontline experts.

Visit the JAMA Network COVID-19 Resource Center for the latest free information on the pandemic, including clinical topics, the latest research on vaccines, public health guidance from the CDC and WHO, and much more.

Learn more at ja.ma/covid



Hypertension Topic Collection

A collection of the latest and most relevant hypertension articles from across the JAMA Network, including *JAMA*, *JAMA Cardiology*, *JAMA Internal Medicine*, *JAMA Network Open*, and more.

Learn more at jamanetwork.com/channels/hypertension



JAMA Network Backfiles

Explore the history of medicine with JAMA Network Backfiles. This rich, full-text digital resource includes every issue of *JAMA* and the specialty journals published from 1883 through 1997.

Available as a one-time, perpetual-access purchase, **JAMA Network Backfiles include:**

- *JAMA* (1883-1997)
- *Archives of Dermatology* (1920-1997)
- *Archives of General Psychiatry* (1959-1997)
- *Archives of Internal Medicine* (1908-1997)
- *Archives of Neurology* (1959-1997)
- *Archives of Neurology & Psychiatry* (1919-1958)
- *Archives of Pediatrics & Adolescent Medicine* (formerly *American Journal of Diseases of Children*) (1911-1997)
- *Archives of Ophthalmology* (1929-1997)
- *Archives of Otolaryngology–Head & Neck Surgery* (1925-1997)
- *Archives of Surgery* (1920-1997)

Already have the Backfiles? Talk to your sales representative about purchasing the Mid Files to complete your JAMA Network collection. The Mid Files bridge the gap between the Backfiles and your site license subscription, offering perpetual access to content published between 1998 and the start of your institution's subscription.

The AMA, in keeping with its policy regarding continued access to scholarly work, has arranged for *Archives of Family Medicine* to be freely available as “triggered content” with the CLOCKSS Archive.

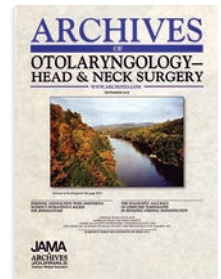
Archives of Family Medicine was offered free of charge to family physicians, general practitioners, and primary care doctors of osteopathic medicine from the beginning of 1992 until October 2000, when it ceased publication. It can now be accessed at the URL below:

[🌐 clockss.org/clockss/Archives_of_Family_Medicine](https://clockss.org/clockss/Archives_of_Family_Medicine)

For pricing, see page 16.

FEATURES INCLUDE

- Fully searchable high-resolution PDFs
- Fully searchable HTML abstracts and metadata
- HTML reference linking
- Sitewide access for all your patrons
- Perpetual access with purchase (annual maintenance fee may apply)
- COUNTER-compliant usage statistics



JAMA Network 2022 Institutional Pricing

JAMA Network Site Licenses

Site licenses provide the widest possible access, offering your users seamless access when logged in to your institution's network — either at work or remotely.

Give your patrons convenient access to the high-impact medical information and commentary they need — when and where they need it.

- Includes perpetual access to licensed content.
- Allows simultaneous, seamless access to leading medical information.
- Includes online-only supplements and Online First articles.
- Custom solutions available for multisite organizations, consortia, national health systems, membership organizations, multinational corporations, and other nonstandard organizations.
- Institutions may register an unlimited number of IP addresses.
- New: Seamless Access allows your patrons to log in and read articles with their institutional credentials.
- JAMA Network publications support access via Athens and Shibboleth.
- Print copies of any title are available at a discounted rate with a site license purchase.
- New: Seamless Access allows your patrons to log in and read articles with their institutional credentials.
- Institutional users are eligible for free CME activities that span specialties and offer *AMA PRA Category 1 Credit*.™

New: Resources for Librarians

- The all-new Resources for Librarians page offers easy access to helpful tools for current site license customers and anyone looking for more information about JAMA Network products. You will find administrative tools for managing your account, downloadable marketing materials, the latest news, and much more.

FEATURES INCLUDE

Complete Online Access Back to 1998

Active site license subscribers will have access to all content published in the licensed journals going back to January 1998.

Online First

All journals publish new content online each week. JAMA Network also offers expedited review and publication for important clinical trials and research to be presented at major meetings.

Citation Manager

Output citation data to RIS (Zotero), EndNote, BibTex, Medlars, Mendeley, ProCite, RefWorks, Reference Manager.

COUNTER-compliant Usage Statistics

Track your institution's usage with COUNTER-compliant usage statistics, included with your site license.

Multimedia

View animated figures, interactives, and videos that enhance the learning process.

Digital Preservation

JAMA Network has partnered with CLOCKSS to ensure that our content remains available to the global research community.

Visual Abstracts

Now available for selected research articles, visual abstracts offer helpful visual summaries of the information found in article abstracts.

Access for Developing Countries

JAMA Network journals participate in the World Health Organization's Research4Life initiatives, which provide free or nearly free access for institutions in low- and middle-income countries.

The JAMA+8 Site License Includes:*

- JAMA
- JAMA Dermatology
- JAMA Internal Medicine
- JAMA Neurology
- JAMA Ophthalmology
- JAMA Otolaryngology–Head & Neck Surgery
- JAMA Pediatrics
- JAMA Psychiatry
- JAMA Surgery

* JAMA Oncology and JAMA Cardiology sold separately.

2022 Site License Pricing

Academic/Research/Government

	JAMA	JAMA +3	JAMA +6	JAMA +8	JAMA Oncology*	JAMA Cardiology*
Tier D3	\$15,126	\$23,822	\$28,041	\$29,543	\$5,457	\$5,457
Tier D2	\$11,820	\$18,593	\$21,893	\$23,082	\$4,305	\$4,305
Tier D1	\$9,964	\$15,668	\$18,458	\$19,456	\$3,628	\$3,628
Tier C	\$4,344	\$6,860	\$8,082	\$8,514	\$1,626	\$1,626
Tier B	\$2,431	\$3,835	\$4,522	\$4,767	\$930	\$930
Tier A2	\$1,326	\$2,086	\$2,481	\$2,606	\$507	\$507
Tier A1	\$929	\$1,456	\$1,721	\$1,820	\$356	\$356

See Important Sales Tax Information on page 19.

*JAMA Oncology and JAMA Cardiology sold separately.

TIER DESCRIPTIONS

Tier D3

- Universities with a single medical school and 3-5 inpatient care medical centers and/or hospitals (that share e-resources with the University)
- Universities with a DO and MD school (and no inpatient care facilities that share e-resources with the library)
- Universities with two MD or two DO medical schools (and no inpatient care facilities that share e-resources with the library)
- Nonprofit research facilities with 1201-2000 research staff

Tier D2

- Universities with a single medical school and 1-2 inpatient care medical center(s) or hospitals (that share e-resources with the University)
- Nonprofit research facilities with 801-1200 research staff

Tier D1

- Universities with a single medical school (and no inpatient care facilities that share e-resources with the library)
- Nonprofit research laboratories with 301-800 research staff

Tier C

- Universities with practical health science related doctoral programs (PharmD, PsyD, DHSc)
- Masters colleges with practical/applied health science related programs (MSN, MHSc)
- Nonuniversity-affiliated health specialty school (pharmacy, anesthesiology, physician assistance)
- National government departments and agencies (excludes hospitals, hospital systems, and all patient care facilities)
- Nonprofit research laboratories with 101-300 research staff
- Postbaccalaureate premed programs

Tier B

- Masters colleges without practical/applied health-related programs (nutrition, biology)
- Baccalaureate colleges with practical health science programs (premed, BSN, medical assistant)
- Alternative health-related professional schools (Eastern medicine, massage therapy, nutrition, chiropractic colleges)

- Private foundations and charitable organizations (excludes hospitals, hospital systems, and patient care facilities)
- Nonprofit research laboratories with up to 100 research staff

Tier A2

- Multicampus associate and community colleges with fewer than 5 campuses
- Single-site community colleges with more than 5000 students and specialty health programs
- Baccalaureate colleges with no practical/applied health science programs (health care administration, biology)
- Multinational law, brokerage, and media companies

Tier A1

- Law schools
- High schools
- Public libraries with one location
- Single-campus associate and community colleges with fewer than 5000 full-time students

Please Note

- For universities with more than 5 affiliated inpatient care medical center or hospital locations, please contact your sales representative for additional pricing.
- For universities with collaborative or joint medical schools that offer first- and second-year medical school courses, please contact your sales representative for additional pricing.
- Hospitals located on a medical school campus are counted as a hospital location unless electronic IP access can be restricted to the university site only.
- Academic institutions with research affiliations with for-profit companies must disclose affiliations. Additional charges may apply.
- For public libraries with more than one location, please contact sales representative for additional pricing.
- Alumni access is available upon request.

2022 Site License Pricing

Hospital

	<i>JAMA</i>	<i>JAMA +3</i>	<i>JAMA +6</i>	<i>JAMA +8</i>	<i>JAMA Oncology*</i>	<i>JAMA Cardiology*</i>
Tier HE2	\$12,928	\$20,380	\$24,013	\$25,304	\$4,734	\$4,734
Tier HE1	\$8,618	\$13,599	\$15,996	\$16,867	\$3,155	\$3,155
Tier HD	\$5,009	\$7,906	\$9,283	\$9,799	\$1,870	\$1,870
Tier HC	\$3,344	\$5,281	\$6,214	\$6,552	\$1,251	\$1,251
Tier HB	\$2,627	\$4,163	\$4,882	\$5,152	\$1,005	\$1,005
Tier HA2	\$1,708	\$2,688	\$3,178	\$3,349	\$654	\$654
Tier HA1	\$1,273	\$2,006	\$2,372	\$2,497	\$487	\$487

See Important Sales Tax Information on page 19.

*JAMA Oncology and JAMA Cardiology sold separately.

TIER DESCRIPTIONS

Tier HE2

- Hospital systems with 8-11 hospitals

Tier HE1

- Hospital systems with 4-7 hospitals
- Single hospital with 11-20 affiliated clinics

Tier HD

- Hospital systems with 2-3 hospitals
- Single-site hospitals with 801-1100 staffed beds

Tier HC

- Single hospitals with 501-800 staffed beds

Tier HB

- Single hospitals with 251-500 staffed beds

Tier HA2

- Single hospitals with 121-250 staffed beds

Tier HA1

- Single hospitals with 120 or fewer beds

Nontiered

- Hospital systems with more than 12 hospitals
- Large physician practices

Please Note

- All medical schools that are located within hospitals must use the academic rates.
- If a research facility is within a hospital, the site license cost may be higher.

Already have the Backfiles?

Talk to your sales representative about purchasing the Mid Files to complete your JAMA Network collection. The Mid Files bridge the gap between the Backfiles and your site license subscription, offering perpetual access to content published between 1998 and the start of your institution's subscription.

JAMA Network Backfiles Pricing

Academic/Research/Government

Tiered Pricing Rates

JAMA Network Backfiles are available as a one-time purchase, which includes perpetual access rights to every issue of *JAMA* and the specialty journals published from 1883 through 1997. Maintenance fees are waived with an active site license.

This pricing applies to institutions that fall within tiers D3 through HA1. Other institutions are encouraged to contact a sales representative for a quote: sales@jamanetwork.com.

All prices in US dollars.

	Full Package	JAMA	Specialty Journals Only
Tier D3	\$70,000	\$59,500	\$17,500
Tier D2	\$56,000	\$47,600	\$14,000
Tier D1	\$47,200	\$40,120	\$11,800
Tier C	\$18,000	\$15,300	\$4,500
Tier B	\$11,100	\$9,435	\$2,775
Tier A2	\$6,000	\$5,100	\$1,500
Tier A1	\$4,200	\$3,570	\$1,050

See Important Sales Tax Information on page 19.

TIER DESCRIPTIONS

Tier D3

- Universities with a single medical school and 3-5 inpatient care medical centers and/or hospitals (that share e-resources with the University)
- Universities with a DO and MD school (and no inpatient care facilities that share e-resources with the library)
- Universities with two MD or two DO medical schools (and no inpatient care facilities that share e-resources with the library)
- Nonprofit research facilities with 1201-2000 research staff

Tier D2

- Universities with a single medical school and 1-2 inpatient care medical center(s) or hospitals (that share e-resources with the University)
- Nonprofit research facilities with 801-1200 research staff

Tier D1

- Universities with a single medical school (and no inpatient care facilities that share e-resources with the library)
- Nonprofit research laboratories with 301-800 research staff

Tier C

- Universities with practical health science related doctoral programs (PharmD, PsyD, DHSc)
- Masters colleges with practical/applied health science related programs (MSN, MHSc)
- Nonuniversity-affiliated health specialty school (pharmacy, anesthesiology, physician assistance)
- National government departments and agencies (excludes hospitals, hospital systems, and all patient care facilities)
- Nonprofit research laboratories with 101-300 research staff
- Postbaccalaureate premed programs

Tier B

- Masters colleges without practical/applied health-related programs (nutrition, biology)
- Baccalaureate colleges with practical health science programs (premed, BSN, medical assistant)
- Alternative health-related professional schools (Eastern medicine, massage therapy, nutrition, chiropractic colleges)

- Private foundations and charitable organizations (excludes hospitals, hospital systems, and patient care facilities)
- Nonprofit research laboratories with up to 100 research staff

Tier A2

- Multicampus associate and community colleges with fewer than 5 campuses
- Single-site community colleges with more than 5000 students and specialty health programs
- Baccalaureate colleges with no practical/applied health science programs (health care administration, biology)
- Multinational law, brokerage, and media companies

Tier A1

- Law schools
- High schools
- Public libraries with one location
- Single-campus associate and community colleges with fewer than 5000 full-time students

Please Note

- For universities with more than 5 affiliated inpatient care medical center or hospital locations, please contact your sales representative for additional pricing.
- Hospitals located on a medical school campus are counted as a hospital location unless electronic IP access can be restricted to the university site only.
- Academic institutions with research affiliations with for-profit companies must disclose affiliations. Additional charges may apply.
- For public libraries with more than one location, please contact sales representative for additional pricing.
- Alumni access is available upon request.

JAMA Network Backfiles Pricing

Hospital

Tiered Pricing Rates

JAMA Network Backfiles are available as a one-time purchase, which includes perpetual access rights to every issue of *JAMA* and the specialty journals published from 1883 through 1997. Maintenance fees are waived with an active site license.

This pricing applies to institutions that fall within tiers D3 through HA1. Other institutions are encouraged to contact a sales representative for a quote: sales@jamanetwork.com.

All prices in US dollars.

	Full Package	JAMA	Specialty Journals Only
Tier HE2	\$54,000	\$45,900	\$13,500
Tier HE1	\$36,000	\$30,600	\$9,000
Tier HD	\$21,632	\$18,387	\$5,408
Tier HC	\$15,158	\$12,884	\$3,789
Tier HB	\$12,632	\$10,737	\$3,158
Tier HA2	\$8,211	\$6,979	\$2,053
Tier HA1	\$6,000	\$5,100	\$1,500

See Important Sales Tax Information on page 19.

TIER DESCRIPTIONS

Tier HE2

- Hospital systems with 8-11 hospitals

Tier HE1

- Hospital systems with 4-7 hospitals
- Single hospital with 11-20 affiliated clinics

Tier HD

- Hospital systems with 2-3 hospitals
- Single-site hospitals with 801-1100 staffed beds

Tier HC

- Single hospitals with 501-800 staffed beds

Tier HB

- Single hospitals with 251-500 staffed beds

Tier HA2

- Single hospitals with 121-250 staffed beds

Tier HA1

- Single hospitals with 120 or fewer beds

Nontiered

- Hospital systems with more than 12 hospitals
- Large physician practices

Please Note

- All medical schools that are located within hospitals must use the academic rates.
- If a research facility is within a hospital, the site license cost may be higher.

2022 Institutional Print Pricing

Institutional Print Subscriptions

Institutional Print Only subscriptions are available as follows:

- 48 issues of *JAMA*
- 12 issues of *JAMA Cardiology*
- 12 issues of *JAMA Dermatology*
- 12 issues of *JAMA Psychiatry*
- 12 issues of *JAMA Internal Medicine*
- 12 issues of *JAMA Neurology*
- 12 issues of *JAMA Oncology*
- 12 issues of *JAMA Ophthalmology*
- 12 issues of *JAMA Otolaryngology – Head & Neck Surgery*
- 12 issues of *JAMA Pediatrics*
- 12 issues of *JAMA Surgery*

	US/CAN	AMS	EURO	GBP
JAMA	\$1,564	\$1,877	€1,737	£1,521
JAMA Cardiology	\$1,574	\$1,889	€1,750	£1,531
JAMA Dermatology	\$1,551	\$1,861	€1,723	£1,509
JAMA Psychiatry	\$1,656	\$1,987	€1,840	£1,610
JAMA Internal Medicine	\$1,317	\$1,580	€1,463	£1,280
JAMA Neurology	\$1,744	\$2,093	€1,937	£1,696
JAMA Oncology	\$1,259	\$1,511	€1,399	£1,224
JAMA Ophthalmology	\$1,530	\$1,837	€1,701	£1,489
JAMA Otolaryngology – Head & Neck Surgery	\$1,486	\$1,784	€1,652	£1,446
JAMA Pediatrics	\$1,346	\$1,616	€1,496	£1,309
JAMA Surgery	\$1,317	\$1,580	€1,463	£1,280

See Important Sales Tax Information on page 19.

Please Note

- Any subscription that will be used within an institution must pay the institutional rate.
- All orders placed through subscription agents must include end-user information.

Missing Issue & Sales Tax Information

Missing Issue Claims

Please call Customer Service at
1 800.262.2350 (US and Canada)
+1 312.464.5878 (Rest of World)

Email
jnfulfillment@jamanetwork.org.

Subscription Account Numbers

Subscription account numbers can be found on the mailing label:

ACCOUNT NUMBER

#[**08003430926**]5#JAMUAIMS
042612270CB B

John Doe, MD
123 Main Street
Anycity, Province/State, Postal Code
Country

Important Sales Tax Information

AMA is required by law to collect sales tax on orders shipped to states where AMA has economic nexus. If you are shipping to any of these states, the appropriate charges will be added to your total order and displayed on your final order confirmation.

For states imposing sales or use taxes, your purchase is subject to use tax unless it is specifically exempt from taxation. Your purchase is not exempt merely because it is made over the Internet or by other remote means. Some states require each purchaser to report any taxable purchase that was not taxed and to pay use tax on the purchase. The tax may be reported and paid on the state's individual income tax return or consumer use tax return. Details of how to file these returns may be found at the websites of your respective taxing authorities.

AMA PLAZA

330 North Wabash Ave
Ste 39300
Chicago, Illinois 60611 USA

CUSTOMER SERVICE

USA & Canada: 1 800.262.2350
Rest of World: +1 312.464.5878

SALES

Americas: +1 312.464.4371
Asia/Pacific: +1 312.464.4227
Europe/Middle East/Africa: +1 312.464.2543
sales@jamanetwork.com