

A unique opportunity to join West London's new innovation district.

Welcome to Scale Space White City,
in collaboration with Imperial College London





YOU'RE JOINING A

Scale up community



We're a community of venture builders, universities, corporate innovators and scale up services. Brought together to unlock the potential of UK innovation by helping innovative businesses to scale.

How? By connecting these businesses to the people, services and space they need to accelerate growth and thrive.

Building on over 20 years' experience of the UK's leading venture builder, and research and talent from world-leading universities, we know what it takes to scale.

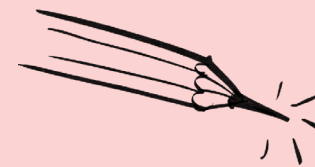
WE CALL THEM
Our ingredients for great.



GROWTH NETWORK

Plug your business into a network of venture builders, academics, researchers, tech leaders and scale up experts.

When you're a growing business, having people outside your core team to act as mentors and support is absolutely critical. As a member, you join an unrivalled network of growth expertise. Book half an hour with a serial entrepreneur, enable your team to collaborate on key topics you need support with, or join our exclusive roundtable events. Let our team help you make the connections you need for your next stage of growth.



EXPERT KNOW-HOW

Scaling is a science. Our community platform brings together research and insights from Blenheim Chalcot, Imperial College London and expert partners.

Moving into a new market, restructuring for growth, new product development; almost all the problems you face as a scaling business have been faced by someone before. To avoid having to reinvent the wheel, our community platform brings a range of research and expertise on business growth. That includes best-practice case studies, research, and insights from Blenheim Chalcot, world-leading universities and our expert partners.



SCALE UP SERVICES

As you grow, you'll need specialist support beyond your immediate team. Source these from our carefully curated list of trusted providers.

Connect with students and graduates looking to gain industry experience. Utilise our monthly talent clinics for recruitment guidance, talent scouting opportunities and research consultancy. As a member, you also have our curated list of trusted service providers, including tech experts, R&D support, brand builders and training providers. Giving you the specialist support you need on tap to accelerate your growth.



TAILORED SPACE

Located on Imperial College London's White City campus, in the heart of West London's new innovation district, we offer over 200,000 sq ft of space tailor-made for high-growth businesses.

Our workspaces are designed with all the facilities your team will need from day one. With us, you can brand your space and really make it your own, with all the flexibility fast-growing businesses need. Create somewhere your team will love to work. And an environment you can show off to your customers with pride.

Gain access to the right people, services and space to support your company's growth.



Our resident members



The UK's leading digital venture builder



Consistently ranked among the world's top business schools



The Payments as a service API platform for digital businesses



Providing co-location services for companies looking to collaborate with Imperial College London



Leading provider of cloud, IT and digital transformation services to the UK



The first true point-of-need Next Generation Sequencing company



Socially responsible employee finance



A professional academy that helps people and companies enable real change through interactive learning experiences

SPACE TO

Grow

**TAILORED WORKSPACE FIT FOR
EVERY STAGE OF GROWTH**



We understand all founders want to create a space their teams can call their own. However, high-growth often brings a need to balance putting down roots with the flexibility to expand. Our wide range of workspace solutions means you can find the perfect fit for your stage of growth.



FLEXI SPACE

5 – 30 shared space

Sometimes a space without walls is just what a fast-expanding team needs. With terms starting at just a month, rent an area in our co-working space, complete with individual desks, chairs and secure lockers, plus full use of our wonderful common business facilities.

Best for:

- Periods of high growth
- Remote or agile workers
- Temporary space



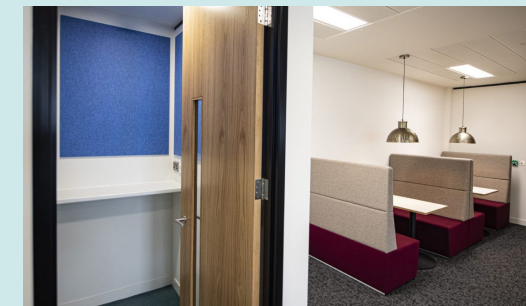
PRIVATE OFFICE

5 – 60+ shared amenities

Choose one of our fully fitted offices and be up and running from day one, in an environment that has been tried and tested to work seamlessly. With terms from 6 months, you can be confident that as your business changes, so can your space.

Best for:

- Small teams
- Growing start-ups
- Short-term commitments



OFFICE SUITE

25 – 100+ private amenities

An upgraded private office where you can choose from a range of finishes, and build up your own lounge areas, meeting space, working layouts and sit-stand desks. We will find the layout to suit your way of working, with your brand front and centre.

Best for:

- Large satellite offices
- Scale-up businesses
- Innovation space



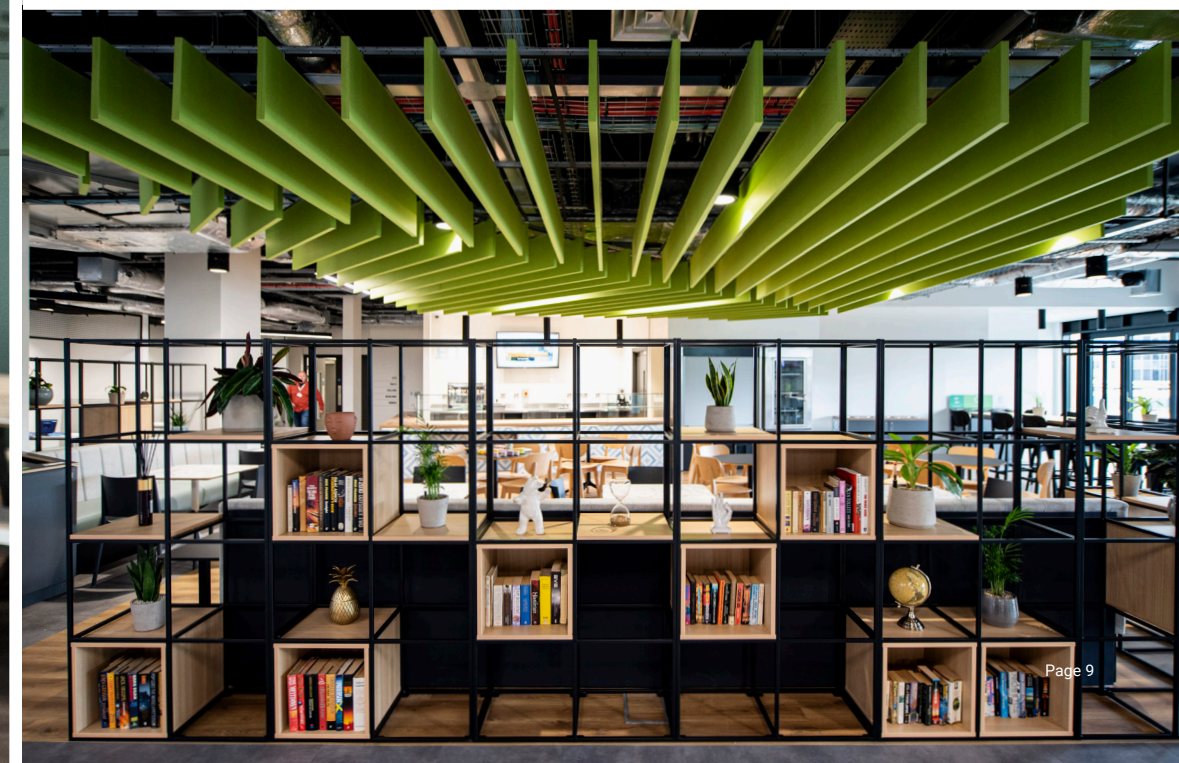
LEASE

100 upward, completely customisable

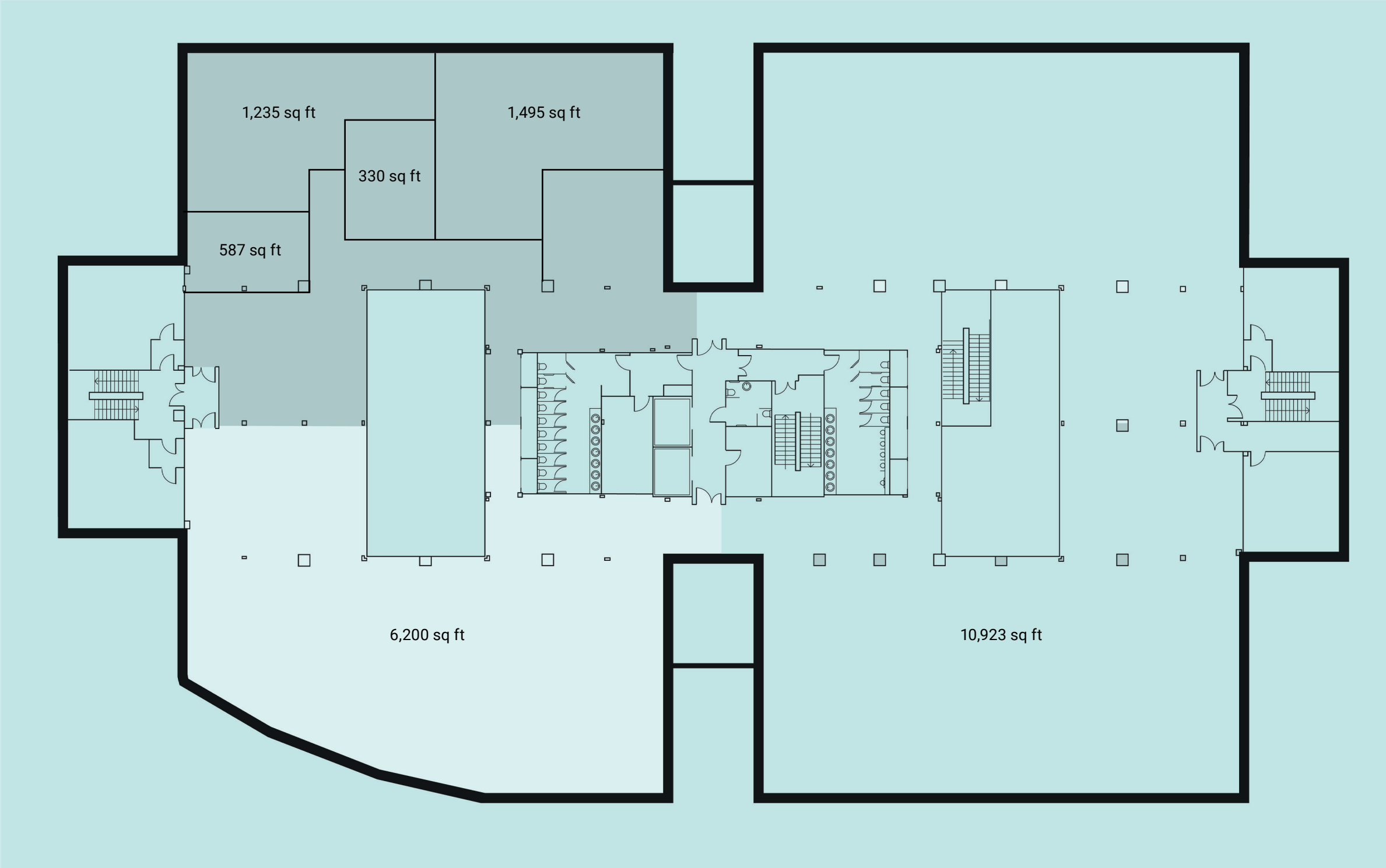
Bring your vision to life with full control of the fit out and operation of your space. Terms start at just 12 months, with a minimum commitment of 6,000 sq ft. All our leased space comes with VRF Air conditioning, integral LED Lighting and a minimum floor to ceiling of 2.7m as standard.

Best for:

- Established businesses
- Long-term commitments
- Full autonomy on space



Indicative space options



All the facilities your team expects



RECEPTION SERVICES



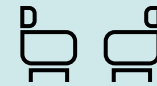
DAILY CLEANING



ALL-DAY CATERING SERVICE



24/7 BUILDING ACCESS



CAFÉ AND BREAK OUT SPACE



BIKE STORAGE



COMMUNITY TEAM



STOCKED KITCHENS



SHOWERS



HIGH SPEED WI-FI



PHONE BOOTHS



DRYING ROOM



UNLIMITED COLOUR PRINTING



MEETING AND EVENT SPACE

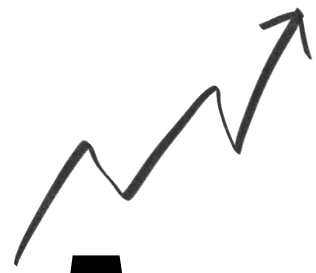


VISITOR'S PARKING

SCALE SPACE

Life





A network of scalers

Scale Space is a peer-to-peer, member-led network for scalers. Our members share knowledge, best practice and facilitate customer and supplier introductions via working groups, monthly meet-ups and hackathons. We facilitate connections, introductions and sharing of knowledge to help businesses scale.

LEADERSHIP NETWORK

Our Leadership Network is an executive forum for networking, thought leadership and policy review dedicated to scaling and innovation. Take part in exclusive events and roundtables; make powerful new connections with business leaders, innovators, investors and academics; and forge new R&D and business collaborations.

INTRODUCTIONS TO MENTORS

We'll introduce you to our network of mentors through our match-making programme – tap into their wealth of experience and industry connections to accelerate your growth trajectory.

WEEKLY EVENTS

Our programme of expert, professional development and social events will broaden your knowledge, skills and network. Our flagship event, The Scale Factor, explores how to scale in the UK's SME ecosystem, in collaboration with Imperial Business School and our affiliated growth partners.



Support at your fingertips



VOUCHED FOR SERVICE PARTNERS

As you grow, you'll need specialist support beyond your immediate team. Source these from our curated list of proven providers. We've done the work to make sure they are the right kind of organisations to help you and you can sign up for their services on terms we've already agreed.



TALENT CLINICS

Work with our in-house experts to access the best talent from Imperial College London. We run monthly talent clinics that connect you with Imperial's graduate and post graduate programmes to support your short-term and long-term hiring needs.



INTRODUCTIONS TO INVESTORS

We know that fundraising with the right partner is critical for your future growth. We'll use our links with the investment community to introduce you to the right partner through pitch nights, networking events and direct introductions.



LEARNING AND DEVELOPMENT

Develop your skills with access to L&D courses and thought leadership from leading academics and our expert partners.



SHORTCUTS TO THE ANSWER

Most challenges you face have been faced by someone before. Our digital platform hosts the best of Blenheim Chalcot's venture-building know-how, including venture building 'playbooks', along with focussed content from universities and partners and input from our community.

Relax and recharge

We also host a number of events supporting wellbeing. From yoga, to massage drop ins, to film nights, to bake-offs, we recognise the importance of balance in helping you and your teams thrive.

Eat and drink

Our onsite café, The Hive is ideal for meetings, breaks or a change of scene while you're working. There's a selection of hot and cold food choices, with many you can grab on the fly. Open 8-5 every weekday for the enjoyment of members, guests and the local community.





WE'RE
Ideally
located

A new vision for White City

AN INTERNATIONAL INNOVATION DISTRICT IS EMERGING IN WEST LONDON



White City has its own ebb and flow through history. The site of the great Franco-British Exhibitions, which ran from 1908 until 1914. Residential housing developments did not spring up until the 1930s, with the BBC arriving in 1960. In the past five years change has really ramped up.

Designated as an “opportunity area”, White City is being reborn. Among other major projects, five thousand new homes are being built, Westfield White City is the biggest shopping centre in Europe, BBC Television Centre and White City Place have undergone large redevelopments, and Imperial College

London has chosen White City for its major new campus. A 23-acre platform for innovation and entrepreneurship, by the end of 2020, approximately 3,000 scientists, clinicians and engineers will call Imperial’s White City Campus their home.



SOME OF THE WORLD-CHANGING BUSINESSES THAT CALL WHITE CITY HOME:

**ARTS ALLIANCE MEDIA, AUTOLUS, AVADO,
BBC, DNAE, DREAM REALITY INTERACTIVE,
ITV, LMAX EXCHANGE, L'OREAL, MODULR
FINANCE, NINEDOTS, NOVARTIS, ONEWEB,
PUBLICIS GROUPE, RESEARCHER, ROOSTER
MONEY, SILICON VALLEY BANK, SALARY
FINANCE, SOHO HOUSE, SYNTHACE, TECH
IRELAND, VIDYARD, YOOX NET-A-PORTER**



Out and about in White City

6

MINS TO WHITE CITY STATION

Central Line

8

MINS TO WOOD LANE STRATION

Circle, Hammersmith & City Lines

10

MINS TO WESTFIELD SHOPPING CENTRE

Parking

36

MINS TO OLD STREET

Connect easily with East London's Tech hub without the price tag.

27

MINS TO THE CITY

London's financial heart is in easy reach along the Central line

13

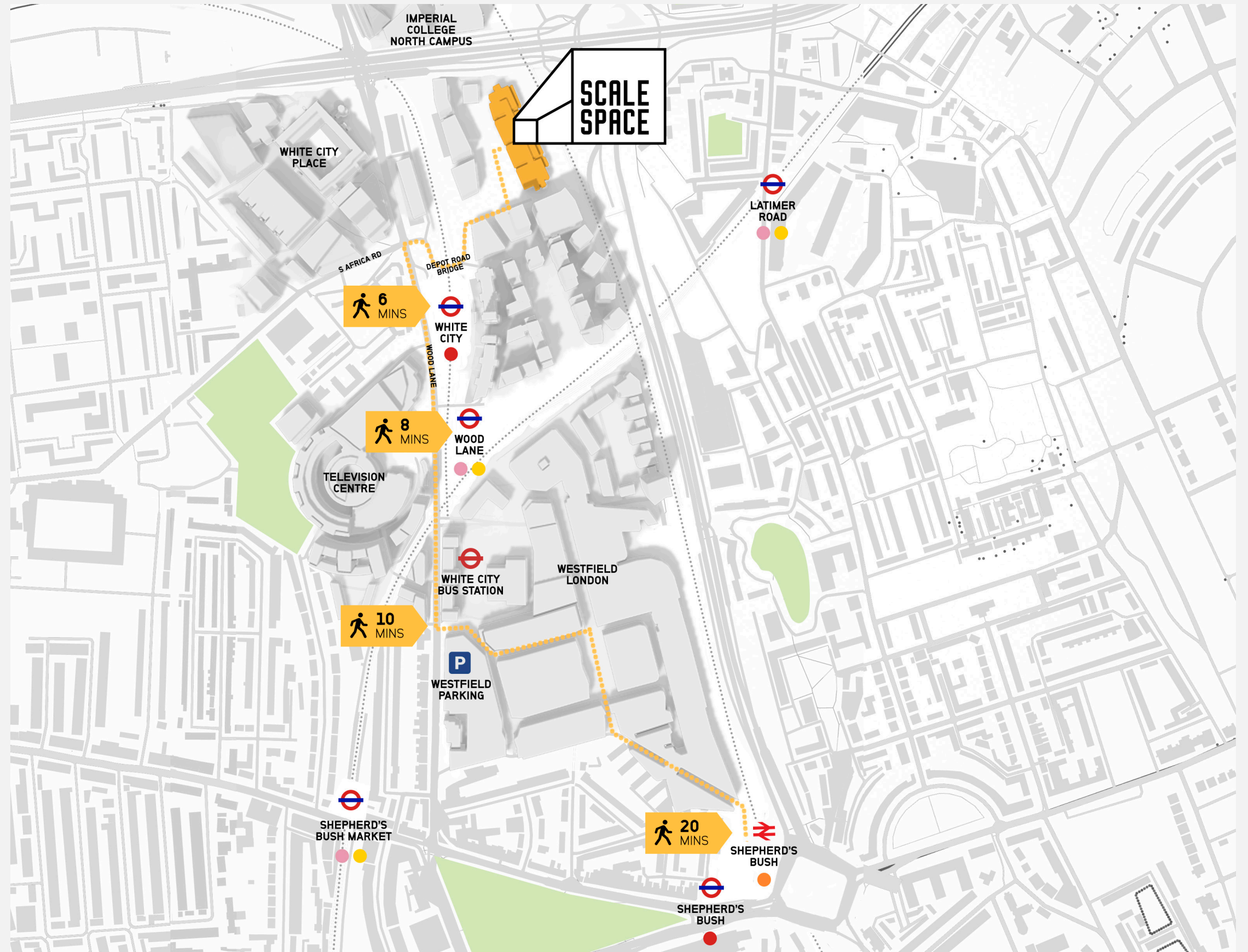
MILES TO HEATHROW

Global connections are crucial to modern business, find yourself on the right side of London for a tight turnaround.

3

UNDERGROUND LINES

With the Hammersmith & City, Central and Circle lines a short walk away, all corners of the capital city are within easy reach.



Area guide

FOOD & DRINK

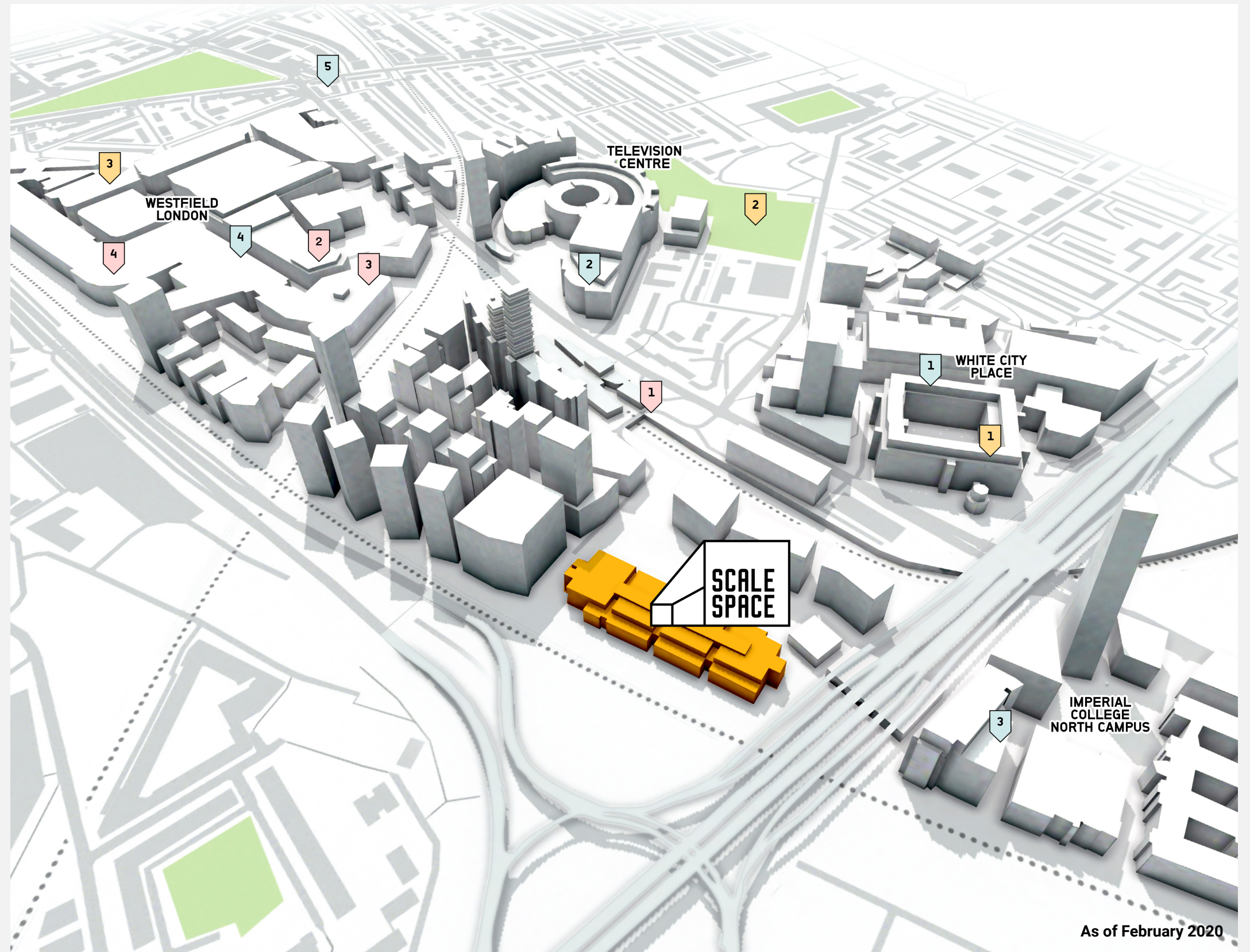
- 1 White City Place**
Butterscotch · Coco di Mama · Crussh
Juice Bar · Herman ze German · Shola
Karachi Kitchen · The Athenian · Waka
· W12 Studios
- 2 Bluebird Cafe**
- 3 Benugo**
- 4 Westfield London**
Barino · Bills · Black Sheep Coffee
· Byron · Catch Me · Franco Manca
· GBK · Mandaloun · Master Boa ·
Sushidog · The Bull · The Distillery ·
The Grand Concerto · The Original
Smokehouse · Wagamama
- 5 Albertine**

CULTURE & ACTIVITIES

- 1 Elephant West Art Gallery**
- 2 Puttshack White City**
- 3 All Star Lanes Westfield**
- 4 Kidzania Westfield**

GYM & FITNESS

- 1 Studio Lagree**
- 2 PlayFootball Shepherds Bush**
- 3 Gymbox Westfield**



As of February 2020

A word from our founders

We see the White City Campus as a place where the best of business comes together with the best research and talent from Imperial College London to help create the businesses of the future. We're excited about the partnership with Blenheim Chalcot and our collaboration on Scale Space – where we know we will see our vision come to life with amazing results.

Alice Gast
President, Imperial College London



Scale Space at White City Campus will be a destination for many of Blenheim Chalcot's businesses and we look forward to it being a centre of great innovation and entrepreneurship, leveraging leading edge research and talent from Imperial College London for our businesses and many others. I can't wait to see the next generation of disruptive digital businesses that are created here.

Manoj Badale
Co-Founder, Blenheim Chalcot



Great happens here

GET IN TOUCH

hello@scalespace.co.uk

scalespace.co.uk

SCALE SPACE WHITE CITY

Imperial College White City Campus
58 Wood Lane London W12 7RZ

