

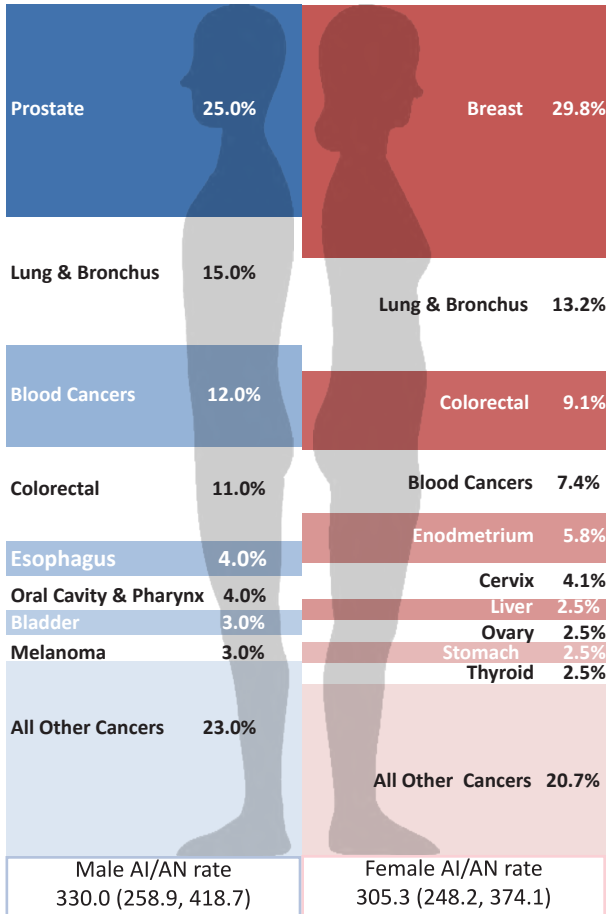
# Fact Sheet

## Cancer among American Indians and Alaska Natives in Idaho, 2003-2007



Northwest Portland Area Indian Health Board  
Indian Leadership for Indian Health

### Leading cancer sites by sex



### Leading cancer sites by age group and sex (percent of cases)

Rank	20-39		40-64		65+	
	Male	Female	Male	Female	Male	Female
1	--	Cervix; Thyroid (25.0% ea.)	Prostate (20.5%)	Breast (33.3%)	Prostate (32.7%)	Breast (29.1%)
2	--	--	Lung & bronchus (18.0%)	Endometrium; Lung & bronchus (10.5% ea.)	Lung & bronchus (15.4%)	Lung & bronchus (18.2%)
3	--	--	Blood cancers (12.8%)	Colorectal (8.8%)	Colorectal (11.5%)	Blood cancers; Colorectal (10.9% ea.)

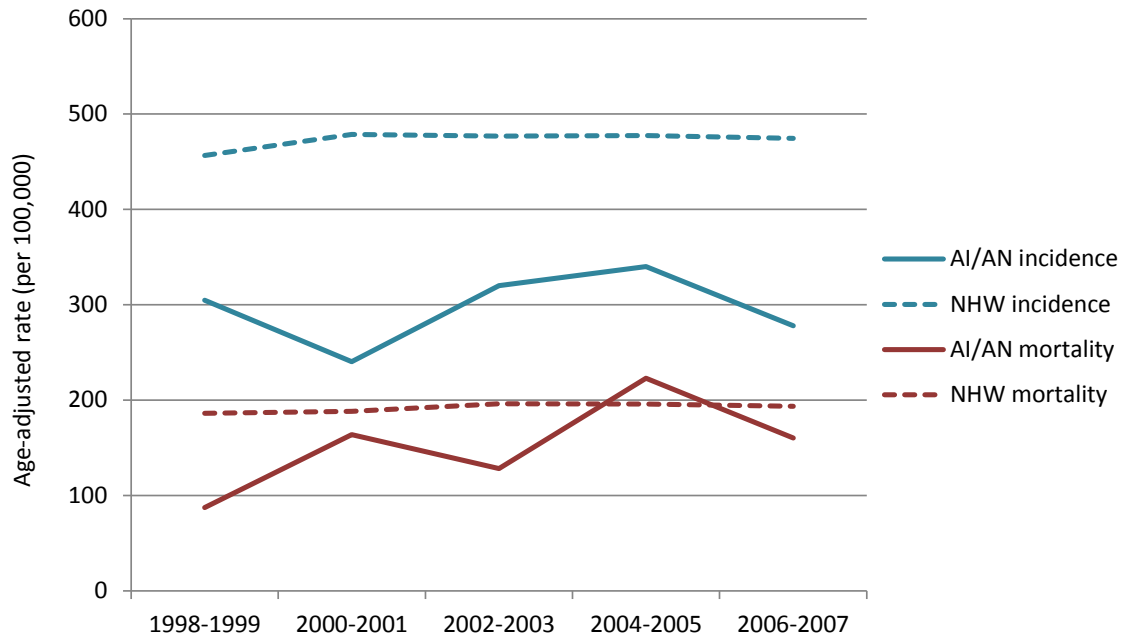
Note: younger age groups had too few cases to report

### Incidence, selected cancer sites

per 100,000 population, calculated using invasive cases only

Cancer	n	Rate (95% CI)	NHW Rate (95% CI)
All Sites	208	308.8 (265.0, 358.7)	475.2 (469.8, 480.5)
Prostate (male)	25	86.8 (53.8, 138.4)	168.3 (163.7, 173.0)
Breast (female)	31	87.5 (57.9, 129.7)	120.5 (116.8, 124.3)
Lung & Bronchus	31	45.9 (30.4, 67.9)	59.0 (57.1, 60.9)
Blood Cancers	21	33.4 (19.5, 54.4)	42.7 (41.1, 44.3)
Colorectal	22	34.5 (20.7, 55.3)	43.6 (42.0, 45.2)

### Incidence and mortality 10 year trends, AI/AN and NHW



### Racial Misclassification

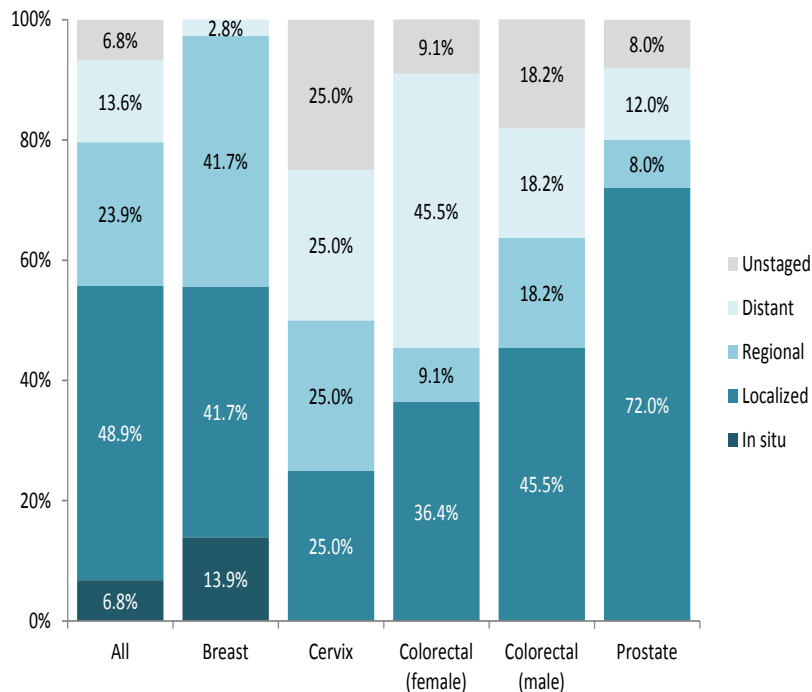
Cancer estimates for AI/AN may be obscured when AI/AN are incorrectly classified as another race (usually White) in public data sources. Each year the NW Tribal Registry partners with the three northwest state cancer registries to correct AI/AN racial misclassification and improve cancer estimates for Northwest AI/AN. Please contact us if you are interested in additional cancer data for your community.

### Cancer screening measures: Portland Area IHS (Idaho, Oregon, & Washington, 2010 reporting year)

<b>56%</b> of women ages 21-64 had a <b>pap smear</b> in the past 3 years	All IHS: <b>59%</b> 2010 Goal: <b>90%</b>
<b>38%</b> of women ages 52-64 had a <b>mammogram</b> in the past 2 years	All IHS: <b>48%</b> 2010 Goal: <b>70%</b>
<b>38%</b> of patients ages 51-80 had <b>colorectal cancer screening</b> in the past year	All IHS: <b>37%</b> 2010 Goal: <b>50%</b>
<b>27%</b> of tobacco users received <b>tobacco cessation</b> counseling in the past year	All IHS: <b>25%</b> 2010 Goal: <b>not determined</b>

The Idaho Department of Health and Welfare's Women's Health Check program offers FREE mammograms and Pap tests for women who qualify. For more information and eligibility criteria, call 1-800-926-2588.

### Stage at diagnosis, screen-detectable cancers



Note: *In situ* and localized may be referred to as 'early stage'; regional and distant are often considered 'late stage'

### Data Notes

- Unless specified as non-Hispanic White (NHW), all data are for American Indian or Alaska Native (AI/AN alone or in combination with another race) residents of Idaho, diagnosed from 2003-2007
- Unless specified, counts (n) and proportions (%) include all reportable cancer sites and stages
- Rates are interpreted as the number of cases (or deaths) that would occur in a population of 100,000 people over one year. All rates are age-adjusted to the 2000 US standard population.
- Incidence rates include invasive cancers plus *in situ* urinary bladder.
- Mortality rates are incidence-based and include a death from any type of cancer. These are based on cancers diagnosed from 1992-2007, and do not represent complete mortality.
- Blood cancers include leukemia, Hodgkin lymphoma, non-Hodgkin lymphoma, and multiple myeloma
- Data are from Cancer Data Registry of Idaho, compiled by Northwest Tribal Registry Project and Northwest Tribal Cancer Control Project, NPaiHB

### Cancer mortality, selected sites per 100,000 population

Cancer	n	Rate (95% CI)	NHW Rate (95% CI)
All Sites	113	185.1 (150.2, 226.7)	195.7 (192.3, 199.2)
Lung & Bronchus	28	42.1 (27.1, 63.8)	51.7 (49.9, 53.5)
Breast (female)	7	28.2 (10.7, 61.4)	23.7 (22.0, 25.4)
Blood Cancers	14	24.9 (12.9, 44.5)	22.1 (21.0, 23.3)
Colorectal	13	23.4 (11.9, 42.3)	17.5 (16.5, 18.6)

### Resources

- For more information about statistical terms and interpretation, see [www.cancer.gov/statistics/glossary](http://www.cancer.gov/statistics/glossary)
- For more information on stage at diagnosis definitions, see [www.cancer.gov/cancertopics/factsheet/detection/staging](http://www.cancer.gov/cancertopics/factsheet/detection/staging)
- Cancer Data Registry of Idaho: [www.idcancer.org](http://www.idcancer.org)
- Women's Health Check: [www.healthandwelfare.idaho.gov](http://www.healthandwelfare.idaho.gov)
- Screening Resources: [www.operationpinkbag.org](http://www.operationpinkbag.org)
- Screening information from Indian Health Service

### For more information

Megan Hoopes, MPH  
503-416-3261 or [mhoopes@npaihb.org](mailto:mhoopes@npaihb.org)

