



<hr/>	
CLASP <small>Policy solutions that work for low-income people</small>	Shiva Sethi
<hr/>	
Advancing Racial Equity in Maternal Mental Health Policy: A Guide for Policymakers and Advocates	
May 2020	


1

<hr/>	
Goals for this presentation	
<hr/>	
Understand barriers to equity in maternal mental health and strategies to overcome them based on successes around the country.	
<hr/>	
CLASP clasp.org	2

2

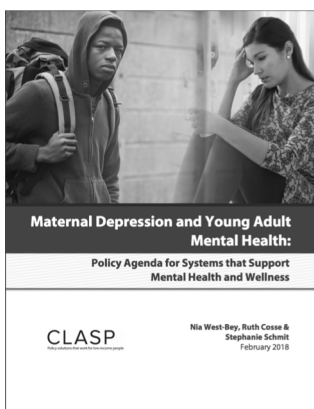
<h2>Outline</h2>	
<ul style="list-style-type: none">• Introduction to CLASP and our Maternal Depression work• Definitions of Key Terms, Overview of Inequities in Maternal Mental Health Care• Common Barriers to Advancing Equity• Strategies to Overcome these Barriers & Examples of Success• Additional Resources	
CLASP clasp.org	3

3

<h2>The Center for Law and Social Policy</h2>	
	
CLASP clasp.org	4

4

CLASP's Mental Health Work



CLASP's mental health work is focused on maternal depression (and other perinatal mood and anxiety disorders) as well as young adult mental health for people with low incomes aged 16-25.

5

The Moving on Maternal Depression (MOMD) Project

- CLASP began the MOMD project to increase access to screening, prevention, and treatment services for maternal depression while advocating for services that are racially equitable and culturally relevant.
- We have been working closely with NJ, NY and PA as well as 7 other states through a learning community.

6

moving on
MATERNAL DEPRESSION (MOMD)
CLASP
Policy and Systems Change Framework
Policy solutions that work for low-income people


What is maternal depression?

Maternal depression is a range of depressive symptoms, experienced by a pregnant woman or a mother with a young child.¹


MOMD's goals

The Center for Law and Social Policy (CLASP) aims to increase access to maternal depression prevention, screening, and treatment while advocating for services that are racially equitable and culturally relevant.


MOMD helps states advance racial equity, systems, and policy by...




Improving statewide education of current and upcoming policy changes and opportunities.



Improving, creating, and reforming policies.





Collecting and disseminating lessons learned, successes, and challenges.





Increasing the quality and availability of services related to maternal depression provided by states.


Factors impacting policy change ²


 Cross-sector partnerships

 Social determinants of health


 Cultural relevance/racial impact

 Research/data


 Mothers' voices/experiences

 Voices/experiences of communities of color


MOMD technical assistance (TA) states



New Jersey



New York



Pennsylvania


States proposed a range of goals they will work to achieve during the project period, including developing data systems to improve access, screening, and treatment as well as integrating standardized screening and referral processes in existing programs statewide. In addition to these three TA states, CLASP convenes a learning community with 7 additional states (D.C., LA, MA, MI, OR, RI, and VA).

CLASP | clasp.org
7

7

CLASP's Definition of Racial Equity

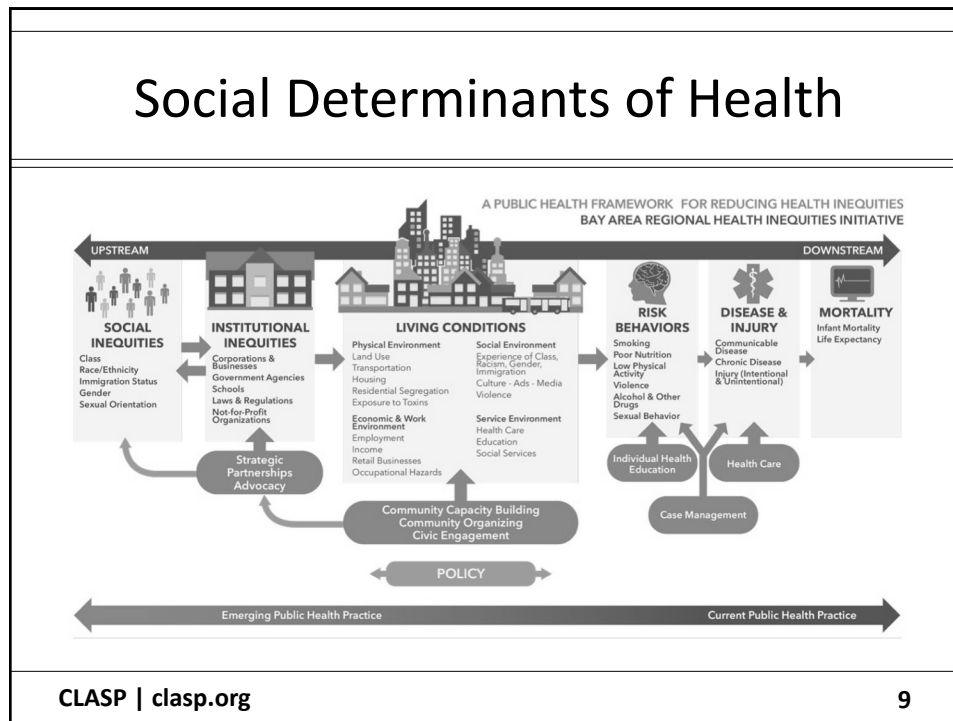
- Our definition of racial equity is the condition that would be achieved if your racial identity no longer predicted your life's outcomes.



CLASP | clasp.org
8

8

Social Determinants of Health



9

Why We Need to Fight Inequity in Maternal Health

Simply – the status quo isn't equitable.

- Nearly 40 percent of mothers of color experience depression after giving birth, twice the overall rate.
- Black women experience the highest rate of pre-term birth nationwide.
- Native American mothers are twice as likely to die during or after childbirth than white mothers, Black mothers are 3 times as likely.

CLASP | clasp.org

10

10

Common Barriers

- The high cost of care
- A lack of service providers
- Cultural beliefs about mental health treatment including a lack of trust in the health care system
- Lack cultural competency in the mental health system
- Stigma about mental health both among and about communities of color
- Language barriers
- Racism, bias, and discrimination in treatment settings
- Lack of transportation, child care, paid leave, or time off from work

CLASP | clasp.org

11

11

Strategies to Overcome these Barriers

- Disaggregating data
- Using upstream approaches
- Building long term, respectful relationships with the people you serve
- Hiring and retaining staff that reflect the diversity of their communities
- Regularly assess how policies impact different communities



CLASP | clasp.org

12

12

Disaggregating Data

Allegheny County, PA created an integrated, cross-agency data inventory to examine racial inequities.



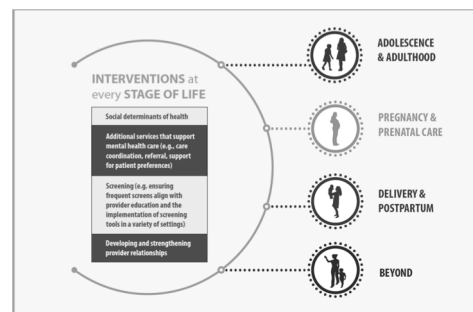
CLASP | clasp.org

13

13

Utilizing Upstream Approaches

The Resilient Boston Project used the city's history of racial division and social determinants of health to understand to guide its approach to reducing trauma and inequity in the city today



CLASP | clasp.org

14

14

Building Trusting Relationships



Minnesota's Department of Health has partnered with the Somali American Parent Association to improve their mental health services for that community.

Building a Diverse & Culturally Competent Workforce

The New York City Department of Health and Mental Hygiene conducted department-wide racial equity trainings and assessments.



Conducting Regular Equity Assessments

San Mateo County, California conducted a 10 year review of a variety of health equity initiatives.



CLASP | clasp.org

17

17

The Impact of Centering Equity

- Throughout the MOMD projects we have made racial equity a key focus of our work.
- As a result, Pennsylvania reevaluated its goals to focus more intentionally on closing disparities, fighting racism and implicit bias.
- In New York, our focus on equity has brought in groups of mothers with lived experience to the policymaking table.

CLASP | clasp.org

18

18

Additional Resources

- The report contains many more resources for more information.
- Many organizations like the Center for Social Inclusion and RaceForward offer racial equity related trainings that may be useful

Specific recommendations for advocates

- Many of these strategies can be adapted for internal as well as external work. Start with internal reform!
- Hold yourselves and your partners accountable for centering equity throughout your work.

Coronavirus, Maternal Mental Health & Equity

- Many of us know that the coronavirus has had a greater impact on many communities of color than it has had on the rest of the country. Black, Latinx, and Native communities have been hit especially hard.
- The COVID-19 pandemic and the economic and mental health crises that it has caused make equity more important than ever.

CLASP | clasp.org

21

21

Questions?



You can contact me at ssethi@clasp.org

CLASP | clasp.org

22

22