

Detailed Results

The table below shows the aggregated data entered for each region, district, sub-district and community. Click on a location to drill down to view the statistics for the locations below it.

At a glance	Detail		
Arm Any -	PDM 12 month PDM -	PBO Nets All Nets -	Sort by Location -

Presence	Coverage	Usage	Condition	Miscellaneous data	Comments	Accountability
-----------------	-----------------	--------------	------------------	---------------------------	-----------------	-----------------------

	AMF Nets												
	Total	Very Good		Good		Viable		Worn out		Rating	Total	Very Good	
Health sub-district		#	%	#	%	#	%	#	%	Rating		#	%
Summary →	142,042	63,095	44	51,505	36	22,346	16	5,096	4	55	30,655	12,705	41
1.1 Isingiro North	2,790	1,534	55	1,032	37	195	7	29	1	63	37	13	35
1.2 Rubabo	4,025	2,086	52	1,462	36	432	11	45	1	60	61	23	38
1.3 Ntugamo MC	537	348	65	157	29	24	4	8	1	67	483	328	68
1.4 Bumfumbira North	625	473	76	127	20	13	2	12	2	73	361	251	70
1.5 Buyanja	4,873	2,394	49	1,673	34	629	13	177	4	57	61	30	49
1.6 Rubanda West	4,051	2,474	61	1,279	32	245	6	53	1	65	118	46	39
1.7 Bukanga	5,177	2,566	50	2,099	41	480	9	32	1	60	3,173	1,586	50
1.8 Kibale	5,906	2,708	46	2,313	39	712	12	173	3	57	144	88	61
1.9 Rushenyi	3,653	2,814	77	698	19	108	3	33	1	78	174	124	71
1.10 Ndorwa East	699	411	59	256	37	32	5	0		69	566	335	59
1.11 Kyaka	7,473	4,190	56	2,146	29	922	12	215	3	58	234	158	68
1.12 Rwampara	3,947	1,664	42	1,884	48	372	9	27	1	59	3,875	1,634	42
2.1 Sheema North	99	56	57	27	27	16	16	0		62	98	55	56
2.2 Kabale MC	619	454	73	133	21	32	5	0		78	1	0	0
2.3 Kinkiizi East	1,041	527	51	386	37	124	12	4	0	60	13	6	46
2.4 Rukiga South	912	506	55	324	36	80	9	2	0	64	474	289	61
2.5 Igara - East	422	302	72	87	21	33	8	0		75	408	290	71
2.6 Fortportal MC	554	327	59	189	34	31	6	7	1	64	520	302	58
2.7 Kinkiizi West	1,291	673	52	394	31	207	16	17	1	59	47	13	28
2.8 Rujumbiura	1,519	843	55	563	37	102	7	11	1	64	1,162	654	56
2.9 Bufumbira East	142	80	56	55	39	4	3	3	2	62	1	1	100
2.10 Igara West	1,002	645	64	316	32	37	4	4	0	71	10	9	90
2.11 Kitagwenda	1,138	516	45	529	46	59	5	34	3	58	1,016	454	45
2.12 Bughendera	1,059	412	39	451	43	164	15	32	3	55	873	304	35
6.1 Bubulo East	265	101	38	82	31	45	17	37	14	44	10	4	40
6.2 Ngora	1,720	484	28	715	42	418	24	103	6	49	28	7	25
6.3 Bukedea	2,307	916	40	814	35	512	22	65	3	54	73	13	18
6.4 Soroti	3,032	884	29	1,179	39	885	29	84	3	52	66	18	27
6.5 Amuria	1,933	153	8	783	41	939	49	58	3	45	1,814	143	8

Detailed Results

The table below shows the aggregated data entered for each region, district, sub-district and community. Click on a location to drill down to view the statistics for the locations below it.

At a glance

Detail

Arm: Any - PDM: 12 month PDM - PBO Nets: All Nets - Sort by: Location -

Presence

Coverage

Usage

Condition

Miscellaneous data

Comments

Accountability

Health sub-district	Sleeping spaces			People		
	#	Covered	%	#	Covered	%
Summary →	163,087	144,104	90	307,910	263,347	88
1.1 Isingiro North	3,188	2,877	92	5,719	4,935	88
1.2 Rubabo	4,583	4,085	91	8,061	7,091	90
1.3 Ntugamo MC	658	541	83	1,015	884	88
1.4 Bumfumbira North	766	643	88	1,433	1,214	88
1.5 Buyanja	5,423	4,860	91	10,405	8,961	88
1.6 Rubanda West	4,984	4,170	88	9,130	7,597	88
1.7 Bukanga	5,814	5,300	91	10,752	9,618	90
1.8 Kibale	6,737	5,898	91	12,900	10,976	89
1.9 Rushenyi	4,195	3,700	92	7,542	6,169	85
1.10 Ndorwa East	742	710	95	1,322	1,255	95
1.11 Kyaka	8,436	7,441	90	16,816	14,169	88
1.12 Rwampara	5,457	4,008	75	7,778	6,643	88
2.1 Sheema North	125	99	81	233	156	69
2.2 Kabale MC	676	621	92	1,077	935	87
2.3 Kinkiizi East	1,513	1,081	72	2,467	2,158	89
2.4 Rukiga South	1,040	922	91	1,879	1,659	92
2.5 Igara - East	515	463	89	892	750	83
2.6 Fortportal MC	726	575	80	989	836	85
2.7 Kinkiizi West	1,312	1,321	99	2,536	2,251	90
2.8 Rujumbiura	1,661	1,531	93	2,938	2,700	92
2.9 Bufumbira East	173	142	90	321	265	91
2.10 Igara West	1,999	1,060	55	2,228	1,771	83
2.11 Kitagwenda	1,413	1,150	89	2,599	2,046	86
2.12 Bughendera	1,091	1,042	96	2,062	1,924	94
6.1 Bubulo East	253	230	90	571	514	90
6.2 Ngora	1,837	1,670	91	3,230	2,884	90
6.3 Bukedea	2,178	2,335	100	4,911	4,452	91
6.4 Soroti	3,412	3,192	93	6,174	5,599	91
6.5 Amuria	2,020	1,900	94	3,754	3,811	100
6.6 Budadiri West	2,806	2,684	96	5,344	4,968	94

Detailed Results

The table below shows the aggregated data entered for each region, district, sub-district and community. Click on a location to drill down to view the statistics for the locations below it.

At a glance **Detail**

Arm: Any - PDM: 12 month PDM - PBO Nets: All Nets - Sort by: Location -

Presence Coverage Usage Condition Miscellaneous data Comments Accountability

						AMF Nets									
Households		Sleeping Spaces		People		Nets Received	Presence	Hung		Present not hung		Missing		Worn out not usable	
#	%	#	#/hh	#	#/ss	#	%	#	%	#	%	#	%	#	
58,960	90	163,087	2.77	307,910	1.89	172,929	93	138,612	80	21,365	12	7,856	5	5,096	
1,160	99	3,188	2.75	5,719	1.79	3,244	95	2,706	83	382	12	127	4	29	
1,686	90	4,583	2.72	8,061	1.76	4,805	98	3,957	82	752	16	51	1	45	
244	76	658	2.70	1,015	1.54	703	96	569	81	108	15	18	3	8	
295	99	766	2.60	1,433	1.87	781	97	618	79	137	18	14	2	12	
2,149	86	5,423	2.52	10,405	1.92	5,743	93	4,644	81	671	12	251	4	177	
1,966	96	4,984	2.54	9,130	1.83	5,123	96	3,932	77	999	20	139	3	53	
1,952	95	5,814	2.98	10,752	1.85	5,765	98	5,164	90	514	9	55	1	32	
2,673	87	6,737	2.52	12,900	1.91	7,038	95	5,699	81	956	14	210	3	173	
1,585	85	4,195	2.65	7,542	1.80	4,276	96	3,562	83	525	12	156	4	33	
289	97	742	2.57	1,322	1.78	732	100	708	97	22	3	2	0	0	
3,389	90	8,436	2.49	16,816	1.99	9,079	93	7,071	78	1,411	16	382	4	215	
1,568	97	5,457	3.48	7,778	1.43	4,440	97	3,904	88	381	9	128	3	27	
43	93	125	2.91	233	1.86	127	83	98	77	7	6	22	17	0	
258	93	676	2.62	1,077	1.59	643	100	613	95	29	5	1	0	0	
534	93	1,513	2.83	2,467	1.63	1,370	98	1,199	88	146	11	21	2	4	
406	98	1,040	2.56	1,879	1.81	1,063	98	916	86	126	12	19	2	2	
181	46	515	2.85	892	1.73	504	95	450	89	30	6	24	5	0	
255	79	726	2.85	989	1.36	631	90	528	84	43	7	53	8	7	
519	90	1,312	2.53	2,536	1.93	1,421	98	1,292	91	96	7	16	1	17	
625	97	1,661	2.66	2,938	1.77	1,753	97	1,505	86	204	12	33	2	11	
71	103	173	2.44	321	1.86	169	92	140	83	16	9	10	6	3	
411	89	1,999	4.86	2,228	1.11	1,273	93	997	78	182	14	90	7	4	
560	94	1,413	2.52	2,599	1.84	1,334	94	1,077	81	176	13	47	4	34	
413	95	1,091	2.64	2,062	1.89	1,154	96	1,023	89	87	8	12	1	32	
92	100	253	2.75	571	2.26	327	80	229	70	31	9	30	9	37	
610	95	1,837	3.01	3,230	1.76	1,812	91	1,590	88	65	4	54	3	103	
899	98	2,178	2.42	4,911	2.25	2,690	95	2,252	84	297	11	76	3	65	
1,001	91	3,412	3.41	6,174	1.81	3,426	94	2,945	86	276	8	121	4	84	
640	73	2,020	3.16	3,754	1.86	2,056	96	1,853	90	125	6	20	1	58	
1,106	96	2,806	2.54	5,344	1.90	3,050	94	2,624	86	243	8	100	3	83	
48	104	124	2.58	206	1.66	105	97	87	83	15	14	0	0	3	

Detailed Results

The table below shows the aggregated data entered for each region, district, sub-district and community. Click on a location to drill down to view the statistics for the locations below it.

At a glance

Detail

Arm: Any - PDM: 12 month PDM - PBO Nets: All Nets - Sort by: Location -

Presence

Coverage

Usage

Condition

Miscellaneous data

Comments

Accountability

Health sub-district	Nets Used				Household used				People sleeping under					
	Correctly		Not Correctly		Correctly		Not correctly		Children under 5		Children 5 to 18		Pregnant women	
	#	%	#	%	#	%	#	%	#	%	#	%	#	%
Summary →	138,133	97	4,127	3	54,242	97	1,646	3	58,007	22	92,997	35	6,223	2
1.1 Isingiro North	2,791	98	65	2	1,092	98	28	2	1,031	21	1,740	35	72	1
1.2 Rubabo	3,874	97	120	3	1,551	97	49	3	1,202	17	2,522	36	116	2
1.3 Ntugamo MC	539	100	2	0	237	100	1	0	168	19	271	31	24	3
1.4 Bumfumbira North	618	98	13	2	262	97	8	3	220	18	450	37	12	1
1.5 Buyanja	4,592	96	214	4	1,953	96	85	4	2,136	24	3,060	34	224	2
1.6 Rubanda West	3,972	96	170	4	1,719	96	64	4	1,319	17	2,739	36	112	1
1.7 Bukanga	5,094	98	123	2	1,840	98	42	2	2,415	25	3,180	33	278	3
1.8 Kibale	5,671	97	160	3	2,437	97	67	3	2,190	20	4,013	37	155	1
1.9 Rushenyi	3,485	97	98	3	1,429	98	33	2	1,130	18	2,230	36	118	2
1.10 Ndorwa East	694	98	12	2	280	98	5	2	235	19	465	37	13	1
1.11 Kyaka	7,239	99	108	1	3,097	98	48	2	3,275	23	4,587	32	357	3
1.12 Rwampara	3,795	95	189	5	1,430	96	57	4	1,154	17	2,535	38	112	2
2.1 Sheema North	97	100	0	0	41	100	0	0	23	15	62	40	1	1
2.2 Kabale MC	605	98	15	2	248	96	9	4	166	18	308	33	12	1
2.3 Kinkiizi East	1,051	98	20	2	511	98	12	2	319	15	922	43	14	1
2.4 Rukiga South	908	98	14	2	380	98	7	2	247	15	608	37	9	1
2.5 Igara - East	460	100	1	0	175	99	1	1	122	16	283	38	16	2
2.6 Fortportal MC	565	98	10	2	240	99	2	1	141	17	246	29	4	0
2.7 Kinkiizi West	1,256	99	13	1	480	99	3	1	412	18	863	38	42	2
2.8 Rujumbiura	1,473	97	53	3	591	96	23	4	514	19	1,013	38	63	2
2.9 Bufumbira East	136	98	3	2	61	97	2	3	42	16	97	37	1	0
2.10 Igara West	1,028	98	21	2	380	98	6	2	301	17	709	40	16	1
2.11 Kitagwenda	1,105	96	43	4	466	96	19	4	338	17	748	37	31	2
2.12 Bughendera	1,004	98	23	2	390	98	10	2	412	21	686	36	62	3
6.1 Bubulo East	226	98	4	2	90	98	2	2	125	24	198	39	9	2
6.2 Ngora	1,657	99	11	1	591	99	4	1	585	20	1,075	37	65	2
6.3 Bukedea	2,220	99	33	1	847	99	12	1	1,115	25	1,560	35	139	3
6.4 Soroti	2,878	96	123	4	879	96	38	4	1,243	22	2,115	38	139	2
6.5 Amuria	1,872	99	10	1	628	99	6	1	822	22	1,486	30	106	2

[Home](#) > [PDMs](#) > [Re-visit Analysis](#)

Data Collection Analysis

The table below shows the comparison of main data and revisit data for matched households. All differences are calculated as main data minus revisit data.

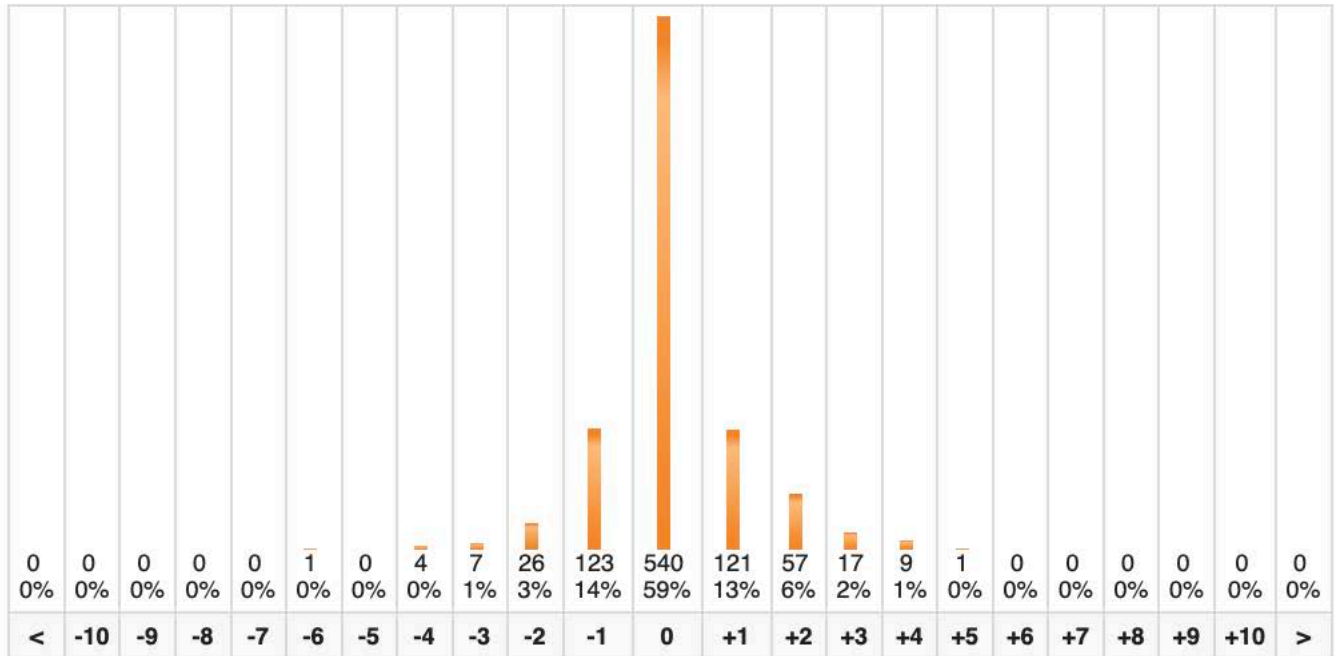
Click on a location to drill down to view the statistics for the locations below it.

Arm PDM [Refresh](#)

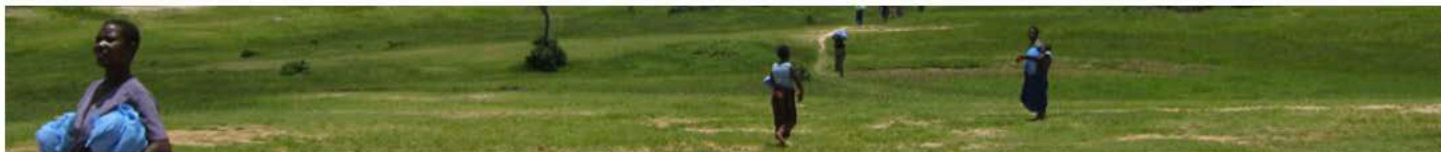
Total records entered: 18,956 Revisit records entered: 1,255 (6.6%) Matching records: 910 (72.5%)

[Nets Hung](#)[Present Not Hung](#)[Sleeping Spaces](#)[Are Used Correctly?](#)[People In The Household](#)

Region	# HHs Matched	Nets Hung					
		Main	Revisit	Δ	%	σ 1	σ 2
Western	910	2,059	1,943	+116	+6	0.6	1.08
	910	2,059	1,943	+116	+6	0.6	1.08



Region	<	-10	-9	-8	-7	-6	-5	-4	-3	-2	-1	0	+1	+2	+3	+4	+5	+6	+7	+8	+9	+10	>
Western	0	0	0	0	0	1	0	4	7	26	123	540	121	57	17	9	1	0	0	0	0	0	0

[Home](#) > [PDMs](#) > [Re-visit Analysis](#)

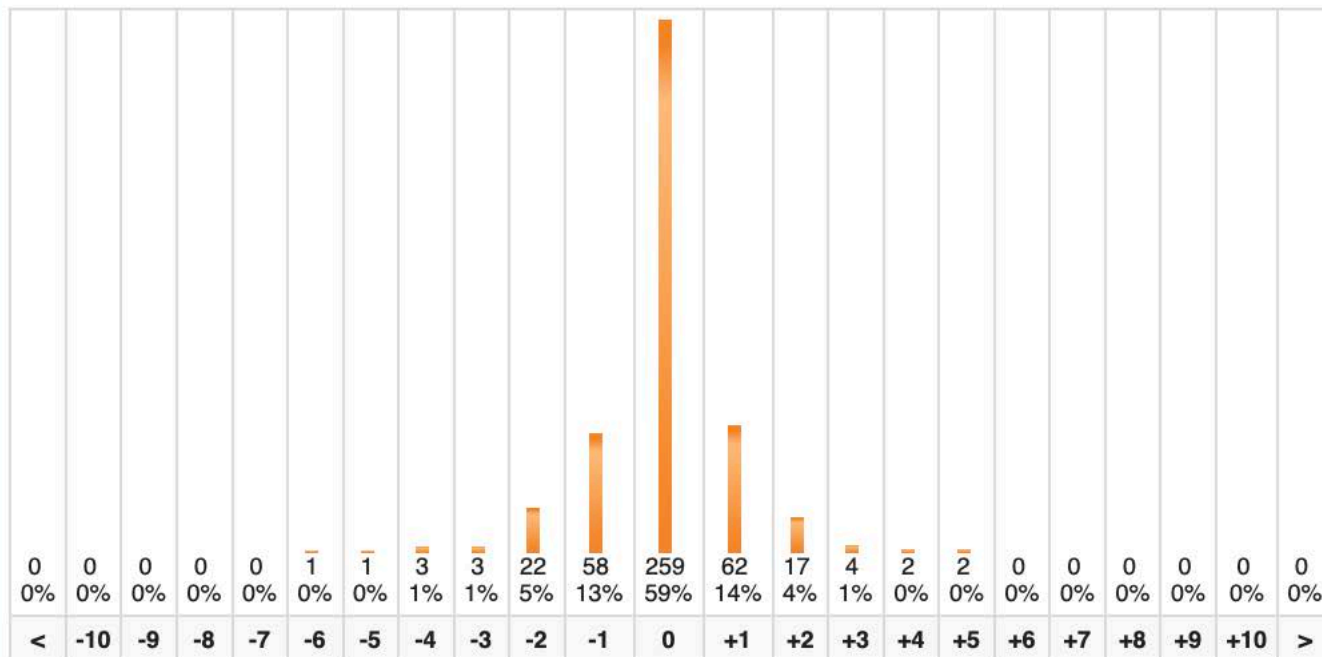
Data Collection Analysis

The table below shows the comparison of main data and revisit data for matched households. All differences are calculated as main data minus revisit data.

Click on a location to drill down to view the statistics for the locations below it.

Arm PDM [Refresh](#)**Total records entered:** 4,276 **Revisit records entered:** 743 (17.4%) **Matching records:** 439 (59.1%)[Nets Hung](#)[Present Not Hung](#)[Sleeping Spaces](#)[Are Used Correctly?](#)[People In The Household](#)

Region	# HHs Matched	Nets Hung					
		Main	Revisit	Δ	%	$\sigma 1$	$\sigma 2$
Western	439	1,029	1,024	+5	0	0.6	1.10
	439	1,029	1,024	+5	0	0.6	1.10



Region	<	-10	-9	-8	-7	-6	-5	-4	-3	-2	-1	0	+1	+2	+3	+4	+5	+6	+7	+8	+9	+10	>
Western	0	0	0	0	0	1	1	3	3	22	58	259	62	17	4	2	2	0	0	0	0	0	0

Data Collection Analysis

The table below shows the comparison of main data and revisit data for matched households. All differences are calculated as main data minus revisit data.

Click on a location to drill down to view the statistics for the locations below it.

Arm - PDM -

Refresh

Total records entered: 35,728 Revisit records entered: 3,702 (10.4%) Matching records: 3,037 (82.0%)

Nets Hung

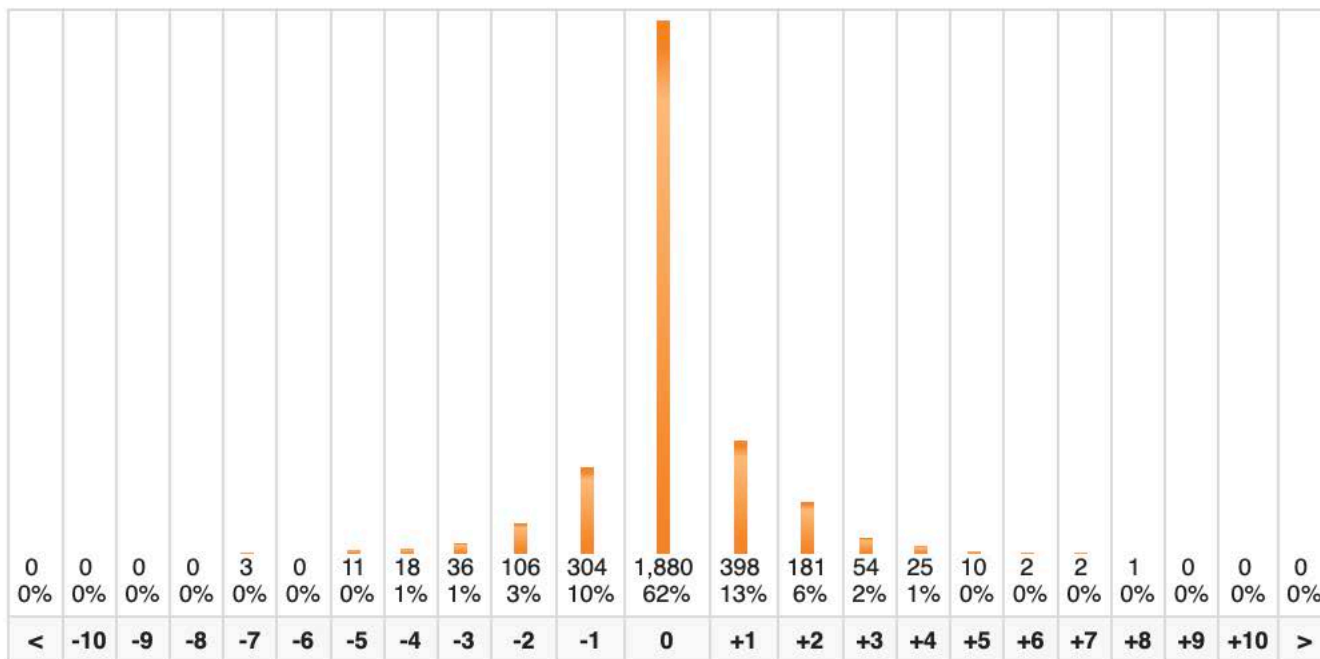
Present Not Hung

Sleeping Spaces

Are Used Correctly?

People In The Household

		Nets Hung					
Region	# HHs Matched	Main	Revisit	Δ	%	σ 1	σ 2
Eastern	2,945	7,126	6,802	+324	+5	0.6	1.19
Western	92	188	170	+18	+10	0.6	0.99
	3,037	7,314	6,972	+342	+5	0.6	1.18



Region	<	-10	-9	-8	-7	-6	-5	-4	-3	-2	-1	0	+1	+2	+3	+4	+5	+6	+7	+8	+9	+10	>
Eastern	0	0	0	0	3	0	11	18	36	100	298	1,827	377	178	51	25	10	2	2	1	0	0	0
Western	0	0	0	0	0	0	0	0	0	6	6	53	21	3	3	0	0	0	0	0	0	0	0