



PLYMOUTH
CITY COUNCIL

Plymouth Sound & Estuaries Marine Recreational Impacts Project: Funding Eco-mooring Research

Beth Siddons, Natural Infrastructure Officer
Plymouth City Council

Eco-moorings Workshop, Swindon, Oct 2017



Special Protection Area



1,955 ha

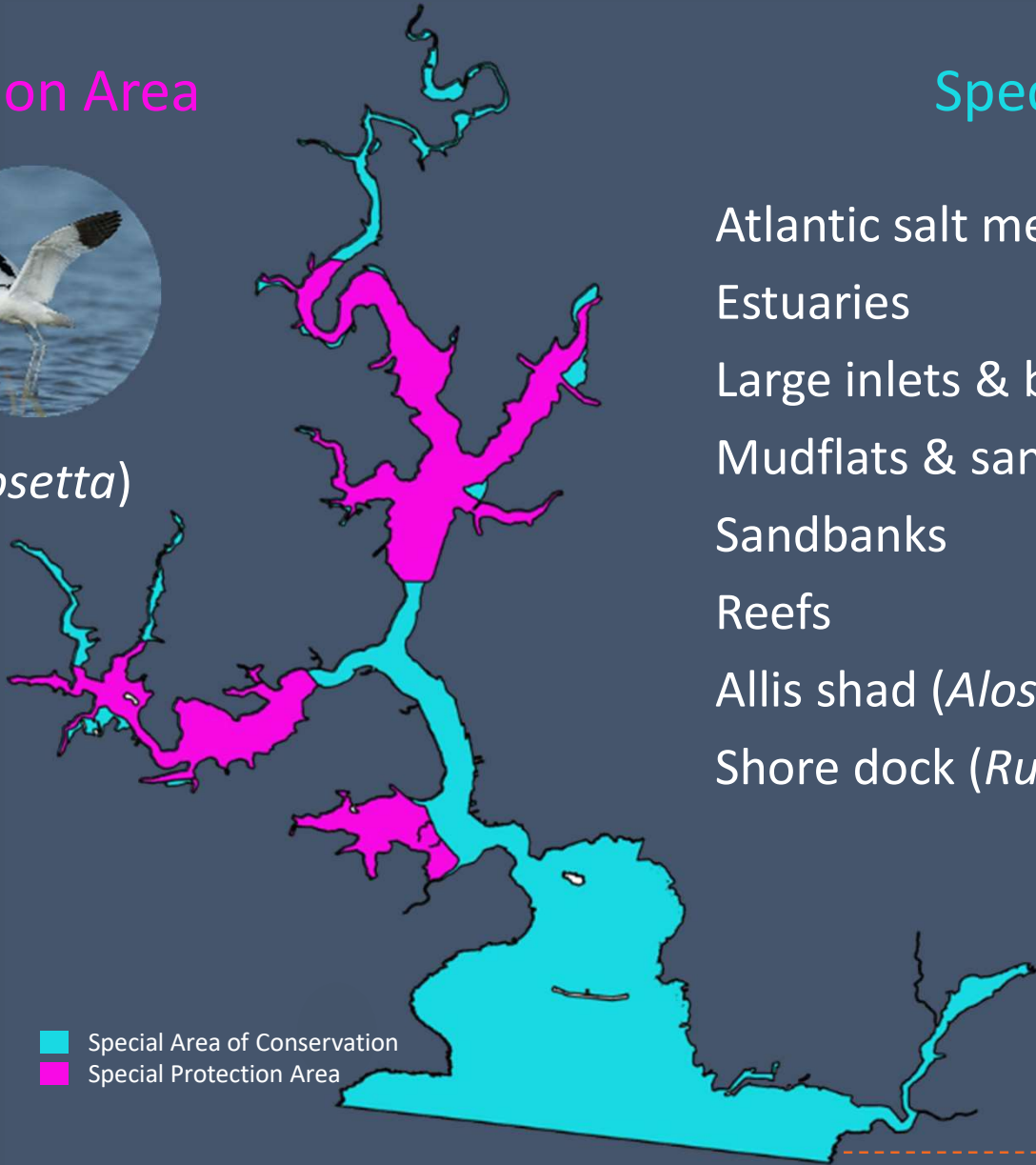


Avocet
(*Recurvirostra avosetta*)

Little Egret
(*Egretta garzetta*)



 Special Area of Conservation
 Special Protection Area



Special Area of Conservation

6,402 ha

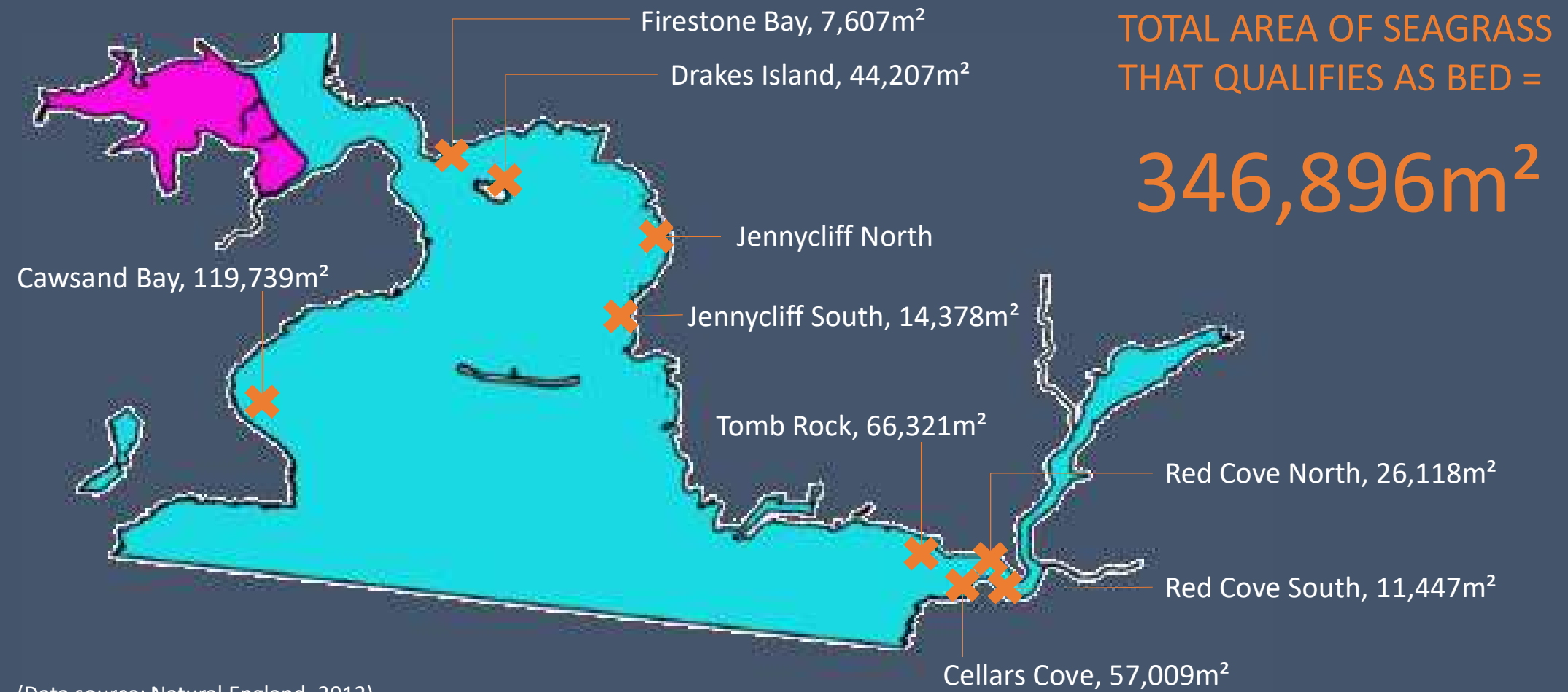
- Atlantic salt meadows
- Estuaries
- Large inlets & bays
- Mudflats & sandflats
- Sandbanks
- Reefs
- Allis shad (*Alosa alosa*)
- Shore dock (*Rumes rupestris*)



PLYMOUTH SOUND & ESTUARIES



Sub-feature - Seagrass bed communities (*Zostera marina*)



(Data source: Natural England, 2012)

INCREASE IN

POPULATION

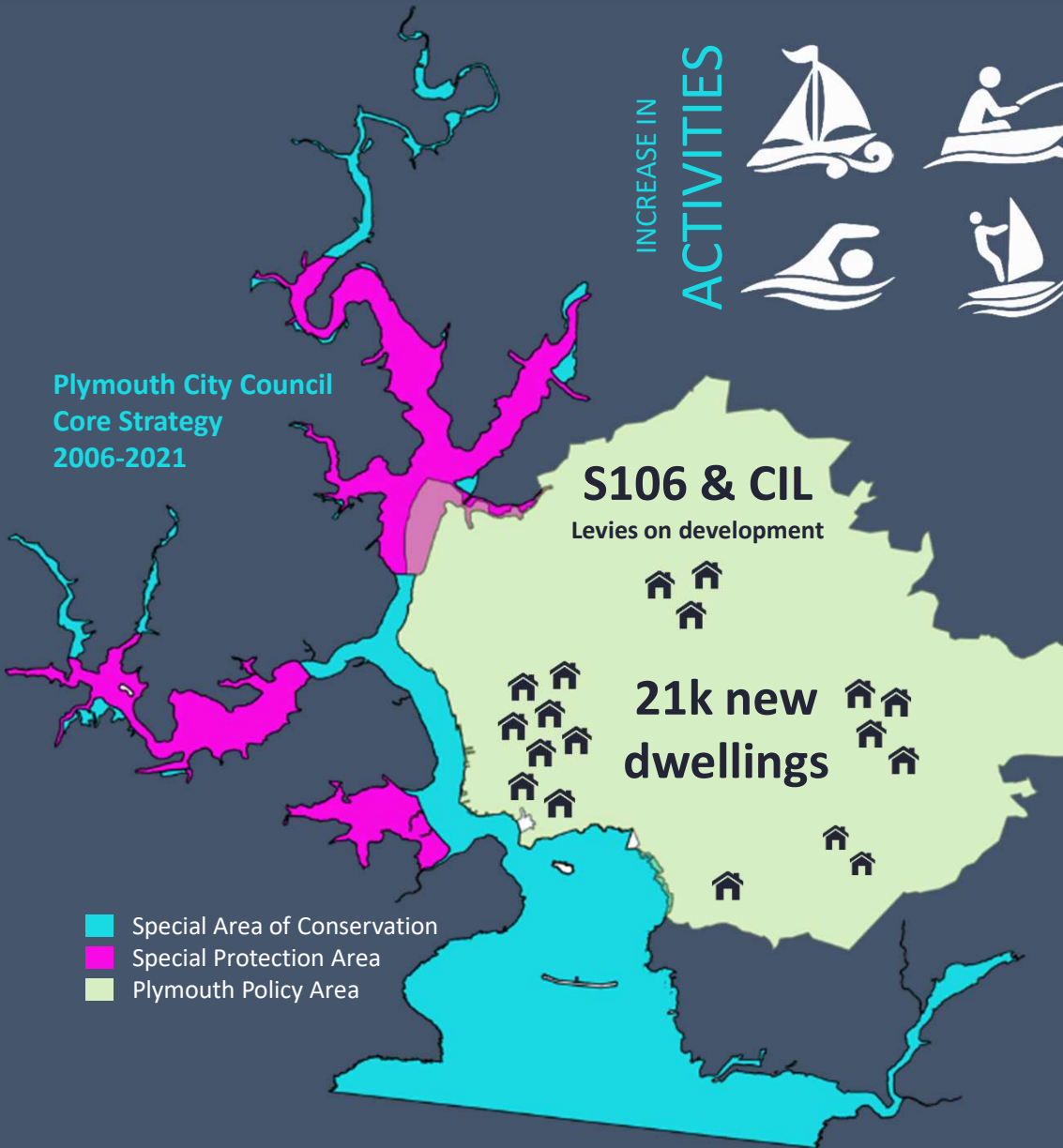
246k



300-350k

Plymouth City Council
Core Strategy
2006-2021

-  Special Area of Conservation
-  Special Protection Area
-  Plymouth Policy Area



INCREASE IN ACTIVITIES



INCREASE IN PRESSURES



Recreational Survey

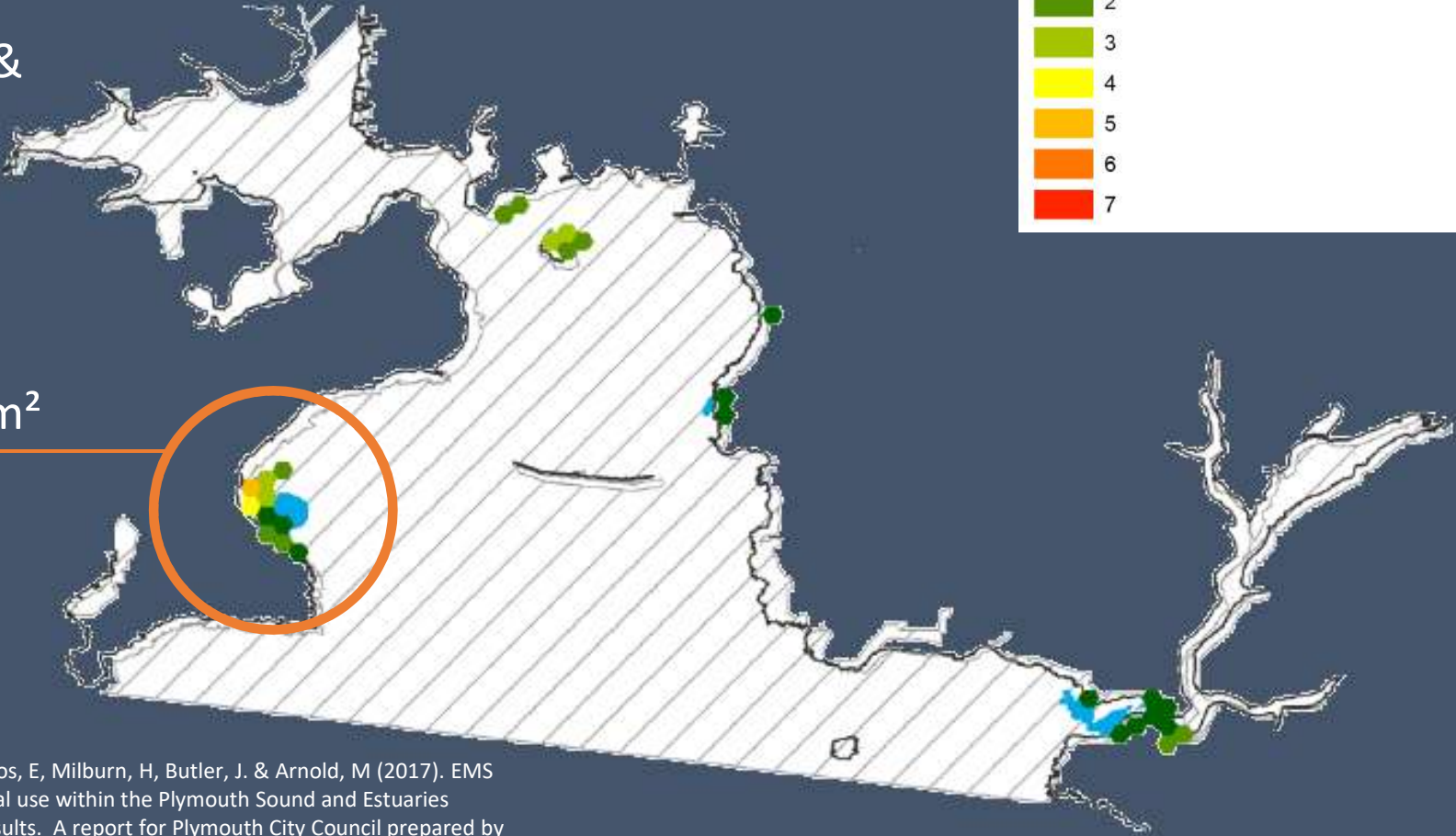


Small craft anchorage and Moorings



Insight into scale & distribution

Cawsand Bay, 119,739m²



Source: Langmead, O., Tillin, H., Griffiths, C; and Bastos, E, Milburn, H, Butler, J. & Arnold, M (2017). EMS Recreation Study Document 04. Survey of recreational use within the Plymouth Sound and Estuaries European Marine Site: Scoping report and Survey Results. A report for Plymouth City Council prepared by the Marine Biological Association of the UK.

Eco-mooring trial in Cawsand Bay



Small craft anchorage and Moorings

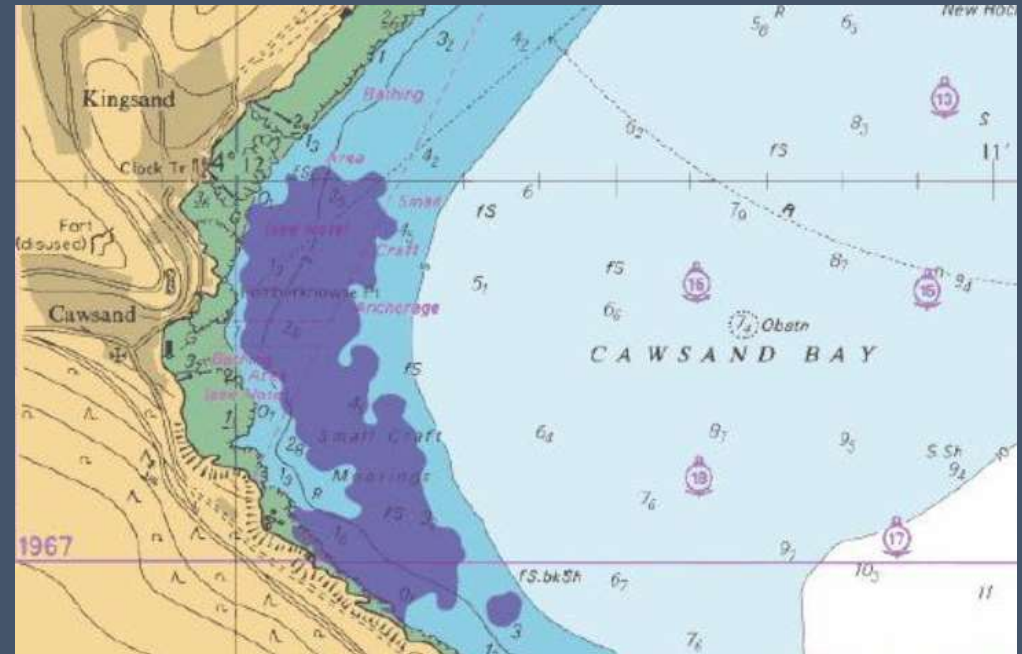


Insight into mitigation options

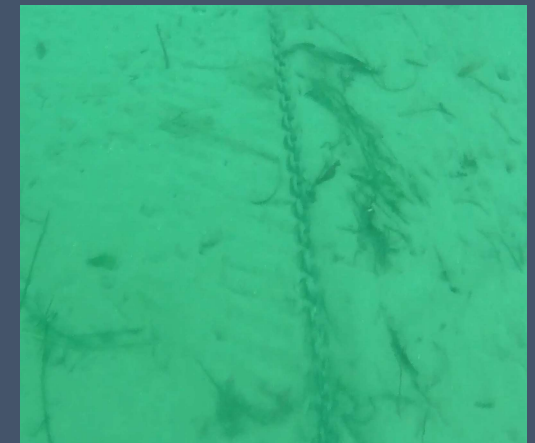


Science-based management

- ✓ Identify effective mitigation measures
- ✓ Justify management actions & investment
- ✓ Meet regulatory requirements
- ✓ Inform future CIL/S106 contributions



(CSI Volunteer)



(Mark Parry, CSI)

Thank you



Beth Siddons

Natural Infrastructure Officer,
Marine Recreational Impacts

beth.siddons@plymouth.gov.uk
Twitter: @TamarEstuaries

01752 306 530
07584 461 680