

Detailed Results

The table below shows the aggregated data entered for each region, district, sub-district and community. Click on a location to drill down to view the statistics for the locations below it.

At a glance		Detail										
Arm	PDM	PBO Nets	Sort by									
Any	18 month PDM	All Nets	Location									
Presence	Coverage	Usage	Condition	Miscellaneous data	Comments	Accountability						
AMF Nets												
		Very Good		Good		Viable		Worn out		Rating		Very Go
Health sub-district	Total	#	%	#	%	#	%	#	%	Rating	Total	#
Summary →	276,535	90,340	33	107,759	39	60,536	22	17,900	6	61	69,944	22,659
1.1 Isingiro North	2,412	1,259	52	882	37	228	9	43	2	78	29	13
1.2 Rubabo	4,410	1,374	31	2,096	48	902	20	38	1	69	142	31
1.3 Ntugamo MC	679	261	38	345	51	66	10	7	1	75	487	180
1.4 Bumfumbira North	638	294	46	278	44	43	7	23	4	73	489	226
1.5 Buyanja	4,736	1,068	23	1,898	40	1,311	28	459	10	57	144	59
1.6 Rubanda West	4,244	2,038	48	1,774	42	294	7	138	3	74	245	109
1.7 Bukanga	4,794	1,444	30	2,385	50	839	18	126	3	67	2,698	762
1.8 Kibale	5,989	1,968	33	2,197	37	1,273	21	551	9	59	218	68
1.9 Rushenyi	3,529	1,878	53	941	27	547	16	163	5	70	34	17
1.10 Ndorwa East	686	271	40	320	47	94	14	1	0	76	657	264
1.11 Kyaka	7,749	1,784	23	2,776	36	2,379	31	810	10	56	371	61
1.12 Rwampara	3,533	1,348	38	1,438	41	664	19	83	2	69	3,230	1,257
2.1 Sheema North	113	25	22	76	67	12	11	0		71	93	22
2.2 Kabale MC	673	201	30	406	60	63	9	3	0	73	9	4
2.3 Kinkiizi East	1,202	240	20	514	43	439	37	9	1	62	41	10
2.4 Rukiga South	946	546	58	348	37	48	5	4	0	84	484	287
2.5 Igara - East	967	540	56	411	43	8	1	8	1	84	906	501
2.6 Fortportal MC	504	199	39	204	40	73	14	28	6	66	409	151
2.7 Kinkiizi West	1,444	478	33	537	37	411	28	18	1	67	4	0
2.8 Rujumbiura	1,479	760	51	555	38	146	10	18	1	78	1,279	656
2.9 Bufumbira East	124	61	49	47	38	5	4	11	9	65	9	2
2.10 Igara West	1,010	436	43	446	44	111	11	17	2	75	27	9
2.11 Kitagwenda	1,311	334	25	576	44	308	23	93	7	59	1,153	285
2.12 Bughendera	1,142	260	23	485	42	312	27	85	7	58	1,109	248
3.1 Isingiro South	5,227	2,002	38	2,017	39	878	17	330	6	64	152	45
3.2 Bugangaizi West	6,558	1,929	29	2,518	38	1,457	22	654	10	58	219	57
3.3 Nyabushozi	4,136	1,403	34	1,748	42	799	19	186	4	65	127	49
3.4 Bukonzo East	997	273	27	446	45	219	22	59	6	60	393	107

Detailed Results

The table below shows the aggregated data entered for each region, district, sub-district and community. Click on a location to drill down to view the statistics for the locations below it.

At a glance

Detail

Arm	PDM	PBO Nets	Sort by
Any -	18 month PDM -	All Nets -	Location -

Presence

Coverage

Usage

Condition

Miscellaneous data

Comments

Accountability

Health sub-district	Sleeping spaces			People		
	#	Covered	%	#	Covered	%
Summary →	321,037	270,229	87	591,345	488,633	86
1.1 Isingiro North	2,848	2,444	86	5,087	4,131	83
1.2 Rubabo	4,985	4,509	93	8,671	7,537	90
1.3 Ntugamo MC	790	698	91	1,238	1,118	93
1.4 Bumfumbira North	753	625	89	1,457	1,220	90
1.5 Buyanja	5,301	4,456	87	9,955	8,385	88
1.6 Rubanda West	4,963	4,221	90	9,125	7,711	89
1.7 Bukanga	5,697	4,750	86	10,406	8,604	86
1.8 Kibale	6,994	5,545	85	13,185	10,583	86
1.9 Rushenyi	4,693	3,409	80	8,481	5,898	78
1.10 Ndorwa East	757	692	94	1,315	1,184	93
1.11 Kyaka	8,818	7,043	83	17,289	13,441	82
1.12 Rwampara	4,572	3,485	79	7,567	5,784	81
2.1 Sheema North	122	122	98	238	218	90
2.2 Kabale MC	703	677	96	1,195	1,129	94
2.3 Kinkiizi East	1,420	1,218	86	2,656	2,386	91
2.4 Rukiga South	1,070	962	91	1,818	1,691	94
2.5 Igara - East	1,077	1,010	94	1,964	1,342	68
2.6 Fortportal MC	669	528	80	938	792	86
2.7 Kinkiizi West	1,561	1,432	92	2,779	2,502	91
2.8 Rujumbiura	1,629	1,469	92	2,730	2,312	86
2.9 Bufumbira East	178	134	92	344	269	95
2.10 Igara West	1,272	1,007	80	2,202	1,712	80
2.11 Kitagwenda	1,448	1,245	89	2,667	2,238	87
2.12 Bughendera	1,264	1,108	89	2,333	2,039	89
3.1 Isingiro South	6,260	5,027	84	10,829	8,556	83
3.2 Bugangaizi West	7,169	6,175	90	13,452	10,978	86
3.3 Nyabushozi	5,000	4,133	86	9,239	7,171	82
3.4 Bukonzo East	1,088	971	90	2,064	1,601	78
3.5 Busongora South	6,557	5,661	90	13,132	10,815	86
3.6 Bufumbira South	7,260	6,215	89	13,934	13,188	99

Detailed Results

The table below shows the aggregated data entered for each region, district, sub-district and community. Click on a location to drill down to view the statistics for the locations below it.

At a glance	Detail		
Arm Any	PDM 18 month PDM	PBO Nets All Nets	Sort by Location

Presence		Coverage		Usage		Condition		Miscellaneous data				Comments		Accountability			
								AMF Nets									
		Sleeping Spaces		People		Nets Received		Presence		Hung		Present not hung		Missing		Worn / not used	
#	%	#	#/hh	#	#/ss	#	%	#	%	#	%	#	%	#	%	#	
114,715	91	321,037	2.80	591,345	1.84	329,927	90	260,226	79	35,918	11	15,883	5	17,900			
1,060	90	2,848	2.69	5,087	1.79	2,983	94	2,353	79	455	15	132	4	43			
1,796	96	4,985	2.78	8,671	1.74	4,910	96	4,330	88	376	8	166	3	38			
259	80	790	3.05	1,238	1.57	768	96	660	86	78	10	23	3	7			
293	98	753	2.57	1,457	1.93	762	95	616	81	107	14	16	2	23			
2,090	83	5,301	2.54	9,955	1.88	5,342	87	4,285	80	364	7	234	4	459			
2,004	98	4,963	2.48	9,125	1.84	5,314	94	4,100	77	891	17	185	3	138			
1,882	92	5,697	3.03	10,406	1.83	5,599	94	4,543	81	729	13	201	4	126			
2,717	89	6,994	2.57	13,185	1.89	7,150	87	5,446	76	785	11	368	5	551			
1,774	95	4,693	2.65	8,481	1.81	4,764	89	3,353	70	895	19	353	7	163			
298	100	757	2.54	1,315	1.74	751	98	681	91	58	8	11	1	1			
3,491	93	8,818	2.53	17,289	1.96	9,391	85	6,926	74	1,018	11	637	7	810			
1,528	95	4,572	2.99	7,567	1.66	4,190	94	3,424	82	500	12	183	4	83			
46	100	122	2.65	238	1.95	127	93	113	89	5	4	9	7	0			
272	99	703	2.58	1,195	1.70	718	98	666	93	37	5	12	2	3			
545	95	1,420	2.61	2,656	1.87	1,429	97	1,198	84	183	13	39	3	9			
406	98	1,070	2.64	1,818	1.70	1,028	99	953	93	65	6	6	1	4			
388	99	1,077	2.78	1,964	1.82	1,078	97	958	89	89	8	23	2	8			
240	75	669	2.79	938	1.40	605	92	475	79	81	13	21	3	28			
578	101	1,561	2.70	2,779	1.78	1,604	97	1,427	89	128	8	31	2	18			
596	93	1,629	2.73	2,730	1.68	1,743	97	1,463	84	231	13	31	2	18			
70	101	178	2.54	344	1.93	179	89	116	65	43	24	9	5	11			
422	92	1,272	3.01	2,202	1.73	1,180	96	995	84	135	11	33	3	17			
560	94	1,448	2.59	2,667	1.84	1,559	89	1,219	78	169	11	78	5	93			
431	99	1,264	2.93	2,333	1.85	1,324	90	1,048	79	137	10	54	4	85			
2,182	95	6,260	2.87	10,829	1.73	6,236	87	4,867	78	575	9	464	7	330			
2,814	89	7,169	2.55	13,452	1.88	7,497	86	5,708	76	757	10	378	5	654			
1,658	85	5,000	3.02	9,239	1.85	4,940	89	3,920	79	501	10	333	7	186			
338	92	1,088	3.22	2,064	1.90	1,142	90	930	81	101	9	52	5	59			
2,280	83	6,557	2.88	13,132	2.00	6,866	89	5,499	80	582	8	367	5	418			
2,903	99	7,260	2.50	13,934	1.92	7,535	96	6,110	81	1,091	14	184	2	150			
2,759	94	6,945	2.52	13,905	2.00	7,438	86	5,781	78	624	8	260	3	773			

Detailed Results

The table below shows the aggregated data entered for each region, district, sub-district and community. Click on a location to drill down to view the statistics for the locations below it.

At a glance

Detail

Arm: Any - PDM: 18 month PDM - PBO Nets: All Nets - Sort by: Location -

Presence Coverage Usage Condition Miscellaneous data Comments Accountability

	Nets Used				Household used				People sleeping u				
	Correctly		Not Correctly		Correctly		Not correctly		Children under 5		Children 5 to 18		Pregna wome
Health sub-district	#	%	#	%	#	%	#	%	#	%	#	%	#
Summary →	259,042	97	7,749	3	103,466	97	3,419	3	104,745	21	171,382	35	11,274
1.1 Isingiro North	2,348	97	64	3	974	97	31	3	815	20	1,448	35	67
1.2 Rubabo	4,273	97	118	3	1,640	97	48	3	1,224	16	2,879	38	122
1.3 Ntugamo MC	697	100	0	0	240	100	0	0	155	14	347	31	34
1.4 Bumfumbira North	624	100	1	0	269	100	0	0	248	20	475	39	16
1.5 Buyanja	4,143	97	122	3	1,817	97	56	3	2,076	25	2,787	33	199
1.6 Rubanda West	3,889	93	279	7	1,735	93	121	7	1,399	18	2,777	36	121
1.7 Bukanga	4,629	98	109	2	1,741	97	49	3	1,735	20	3,125	36	179
1.8 Kibale	5,236	96	228	4	2,350	96	105	4	2,255	21	3,677	35	179
1.9 Rushenyi	3,265	97	84	3	1,492	97	41	3	993	17	1,972	33	77
1.10 Ndorwa East	672	98	13	2	282	98	5	2	221	19	421	36	21
1.11 Kyaka	6,714	98	165	2	3,095	97	86	3	3,056	23	4,320	32	331
1.12 Rwampara	3,348	97	107	3	1,367	96	57	4	1,100	19	2,057	36	114
2.1 Sheema North	122	100	0	0	46	100	0	0	33	15	108	50	16
2.2 Kabale MC	673	99	4	1	270	100	1	0	198	18	405	36	18
2.3 Kinkiizi East	1,204	99	8	1	526	99	7	1	461	19	906	38	24
2.4 Rukiga South	954	100	4	0	397	99	2	1	198	12	684	40	14
2.5 Igara - East	1,010	100	0	0	384	100	0	0	374	28	444	33	128
2.6 Fortportal MC	514	97	14	3	215	97	7	3	95	12	300	38	15
2.7 Kinkiizi West	1,354	95	71	5	537	95	31	5	414	17	982	39	58
2.8 Rujumbiura	1,385	96	52	4	545	96	25	4	462	20	803	35	48
2.9 Bufumbira East	128	96	6	4	50	94	3	6	65	24	131	49	3
2.10 Igara West	990	99	12	1	401	98	7	2	314	18	593	35	21
2.11 Kitagwenda	1,201	98	21	2	503	97	13	3	464	21	815	36	22
2.12 Bughendera	1,013	98	17	2	382	98	7	2	433	21	722	35	59
3.1 Isingiro South	4,893	98	115	2	1,993	98	49	2	1,488	17	3,087	36	271
3.2 Bugangaizi West	5,758	95	299	5	2,407	95	129	5	2,685	24	3,524	32	283
3.3 Nyabushozi	4,047	99	45	1	1,527	99	20	1	1,555	22	2,488	35	155
3.4 Bukonzo East	919	97	31	3	309	96	13	4	358	22	535	33	42

[Home](#) > [PDMs](#) > [Re-visit Analysis](#)

Data Collection Analysis

The table below shows the comparison of main data and revisit data for matched households. All differences are calculated as main data minus revisit data.

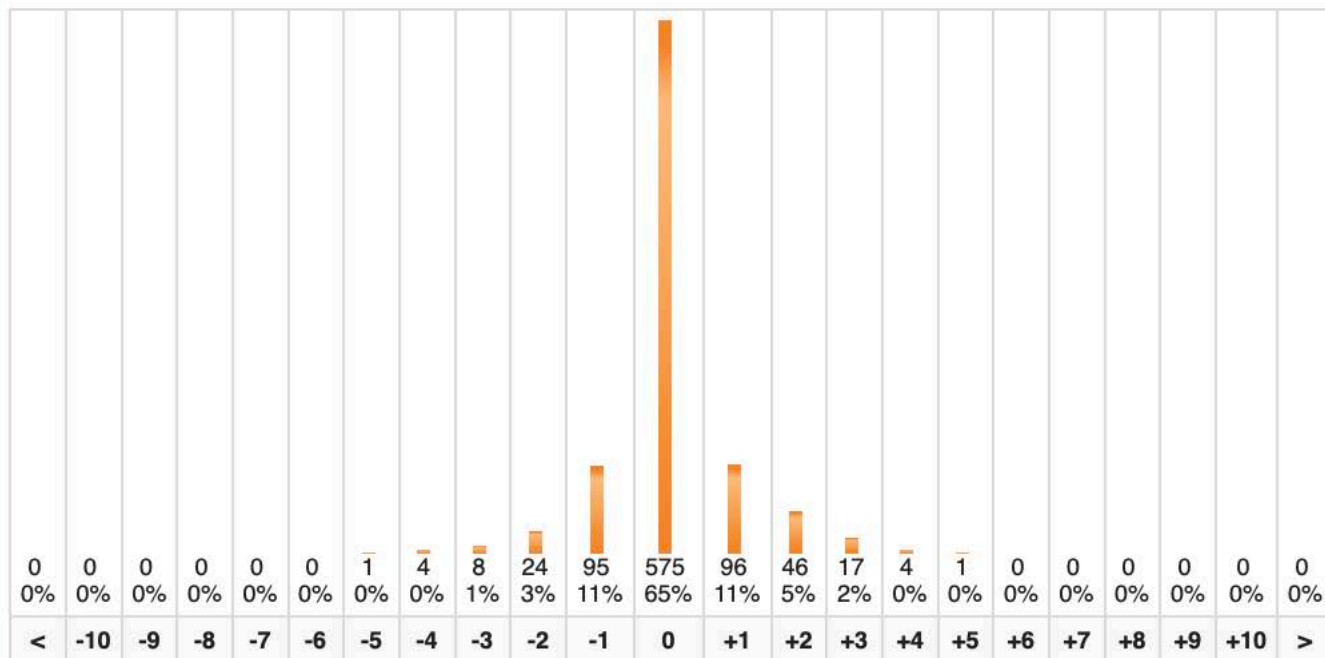
Click on a location to drill down to view the statistics for the locations below it.

Arm PDM [Refresh](#)

Total records entered: 19,192 Revisit records entered: 1,046 (5.5%) Matching records: 882 (84.3%)

[Nets Hung](#)[Present Not Hung](#)[Sleeping Spaces](#)[Are Used Correctly?](#)[People In The Household](#)

Region	# HHs Matched	Nets Hung					
		Main	Revisit	Δ	%	σ 1	σ 2
Western	882	1,926	1,829	+97	+5	0.5	1.00
	882	1,926	1,829	+97	+5	0.5	1.00



Region	<	-10	-9	-8	-7	-6	-5	-4	-3	-2	-1	0	+1	+2	+3	+4	+5	+6	+7	+8	+9	+10	>
Western	0	0	0	0	0	0	1	4	8	24	95	575	96	46	17	4	1	0	0	0	0	0	0

[Home](#) > [PDMs](#) > [Re-visit Analysis](#)

Data Collection Analysis

The table below shows the comparison of main data and revisit data for matched households. All differences are calculated as main data minus revisit data.

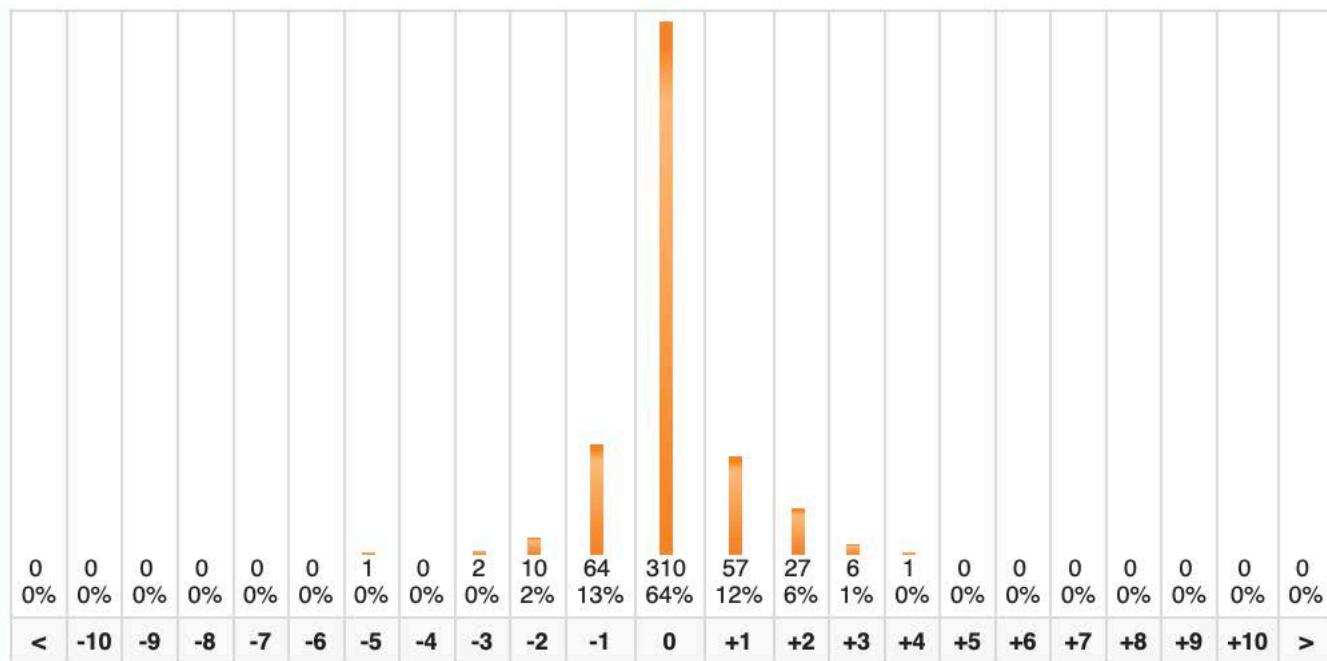
Click on a location to drill down to view the statistics for the locations below it.

Arm PDM [Refresh](#)

Total records entered: 4,554 Revisit records entered: 544 (11.9%) Matching records: 484 (89.0%)

[Nets Hung](#)[Present Not Hung](#)[Sleeping Spaces](#)[Are Used Correctly?](#)[People In The Household](#)

Region	# HHs Matched	Nets Hung					
		Main	Revisit	Δ	%	$\sigma 1$	$\sigma 2$
Western	484	1,097	1,060	+37	+3	0.5	0.89
	484	1,097	1,060	+37	+3	0.5	0.89



Region	<	-10	-9	-8	-7	-6	-5	-4	-3	-2	-1	0	+1	+2	+3	+4	+5	+6	+7	+8	+9	+10	>
Western	0	0	0	0	0	0	1	0	2	10	64	310	57	27	6	1	0	0	0	0	0	0	0

[Home](#) > [PDMs](#) > [Re-visit Analysis](#)

Data Collection Analysis

The table below shows the comparison of main data and revisit data for matched households. All differences are calculated as main data minus revisit data.

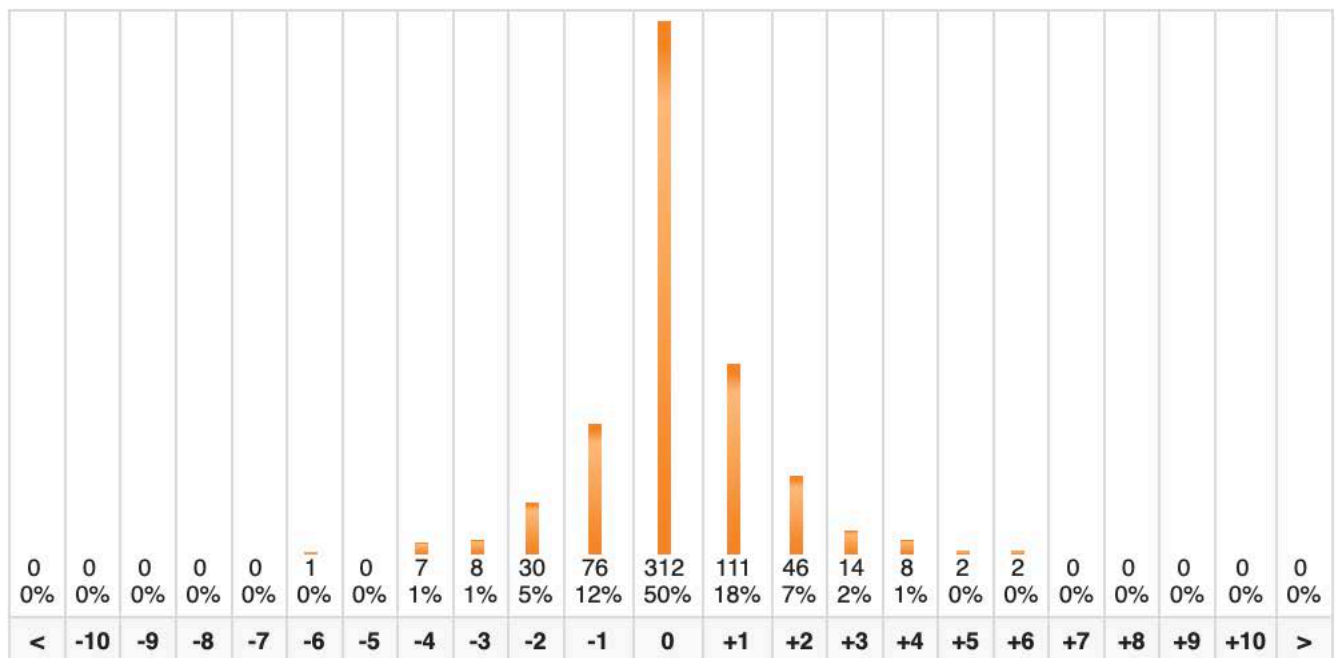
Click on a location to drill down to view the statistics for the locations below it.

Arm PDM [Refresh](#)

Total records entered: 6,189 Revisit records entered: 748 (12.1%) Matching records: 619 (82.8%)

[Nets Hung](#)[Present Not Hung](#)[Sleeping Spaces](#)[Are Used Correctly?](#)[People In The Household](#)

Region	# HHs Matched	Nets Hung					
		Main	Revisit	Δ	%	$\sigma 1$	$\sigma 2$
Western	619	1,436	1,329	+107	+7	0.8	1.33
	619	1,436	1,329	+107	+7	0.8	1.33



Region	<	-10	-9	-8	-7	-6	-5	-4	-3	-2	-1	0	+1	+2	+3	+4	+5	+6	+7	+8	+9	+10	>
Western	0	0	0	0	0	1	0	7	8	30	76	312	111	46	14	8	2	2	0	0	0	0	0

Data Collection Analysis

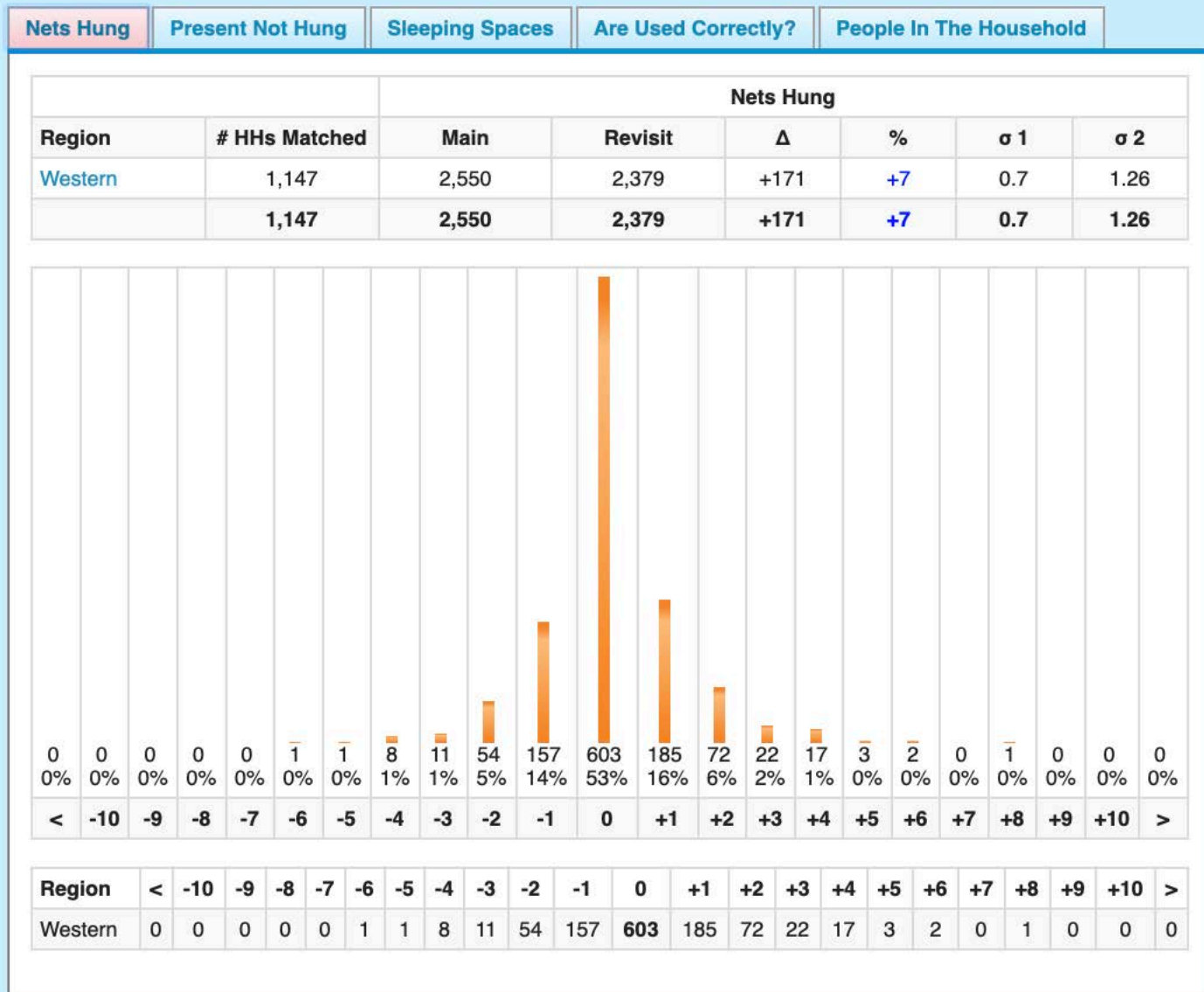
The table below shows the comparison of main data and revisit data for matched households. All differences are calculated as main data minus revisit data.

Click on a location to drill down to view the statistics for the locations below it.

Arm PDM

Refresh

Total records entered: 19,149 Revisit records entered: 1,285 (6.7%) Matching records: 1,147 (89.3%)



Data Collection Analysis

The table below shows the comparison of main data and revisit data for matched households. All differences are calculated as main data minus revisit data.

Click on a location to drill down to view the statistics for the locations below it.

Arm -

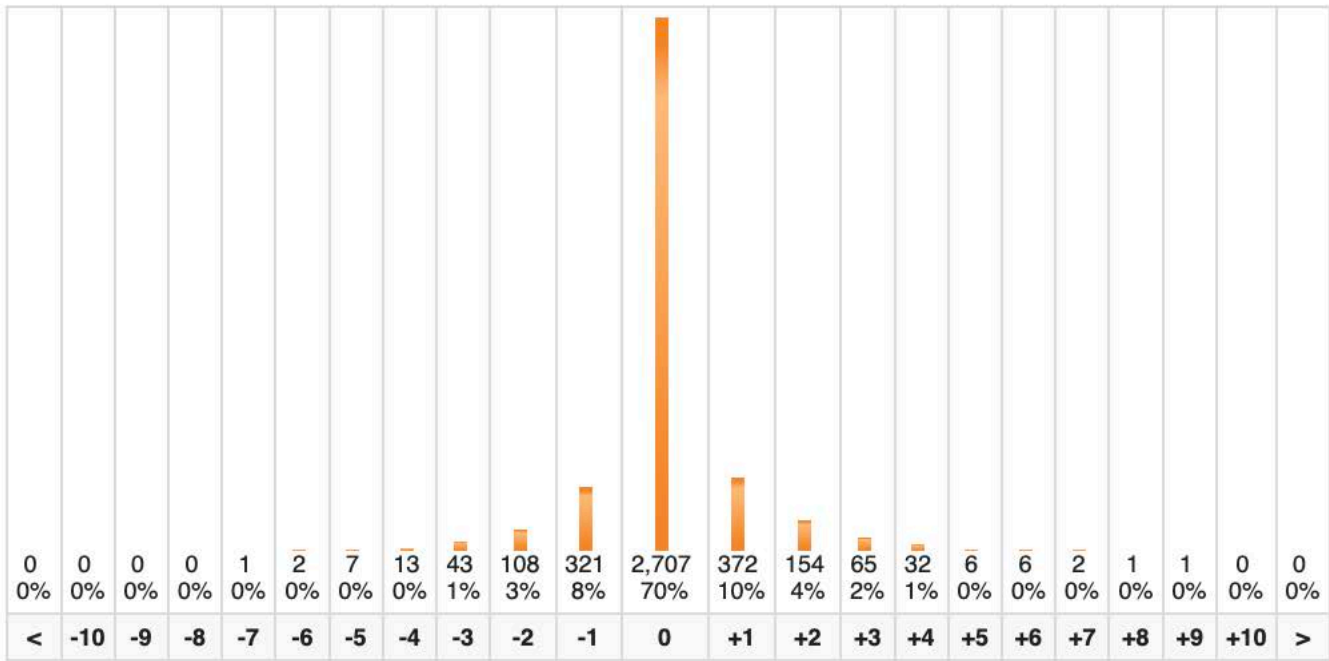
PDM -

[Refresh](#)

Total records entered: 36,394 **Revisit records entered:** 4,313 (11.9%) **Matching records:** 3,852 (89.3%)

Nets Hung	Present Not Hung	Sleeping Spaces	Are Used Correctly?	People In The Household
---------------------------	----------------------------------	---------------------------------	-------------------------------------	---

Region	# HHs Matched	Nets Hung					
		Main	Revisit	Δ	%	σ 1	σ 2
Eastern	3,704	8,621	8,327	+294	+3	0.5	1.06
Western	148	368	339	+29	+8	0.7	1.20
	3,852	8,989	8,666	+323	+4	0.5	1.06



Region	<	-10	-9	-8	-7	-6	-5	-4	-3	-2	-1	0	+1	+2	+3	+4	+5	+6	+7	+8	+9	+10	>
Eastern	0	0	0	0	1	2	6	13	41	105	300	2,626	350	142	63	29	6	6	2	1	1	0	0
Western	0	0	0	0	0	0	1	0	2	3	21	81	22	12	2	3	0	0	0	0	0	0	0