

Detailed Results

The table below shows the aggregated data entered for each region, district, sub-district and community. Click on a location to drill down to view the statistics for the locations below it.

At a glance		Detail											
Arm	PDM	PBO Nets	Sort by										
Any	24 month PDM	All Nets	Location										
Presence	Coverage	Usage	Condition	Miscellaneous data	Comments	Accountability							
AMF Nets													
Health sub-district	Total	Very Good		Good		Viable		Worn out		Rating	Total	Very Good	
		#	%	#	%	#	%	#	%	Rating		#	%
Summary →	146,266	29,572	20	52,376	36	42,273	29	22,045	15	64	25,863	5,515	21
1.1 Isingiro North	2,729	938	34	1,209	44	418	15	164	6	78	206	48	23
1.2 Rubabo	4,214	1,066	25	1,550	37	1,473	35	125	3	76	87	13	15
1.3 Ntugamo MC	509	133	26	255	50	107	21	14	3	79	456	121	27
1.4 Bumfumbira North	652	215	33	289	44	94	14	54	8	75	312	92	29
1.5 Buyanja	5,456	596	11	2,127	39	1,917	35	816	15	62	159	23	14
1.6 Rubanda West	4,172	1,899	46	1,710	41	393	9	170	4	83	171	58	34
1.7 Bukanga	5,324	1,741	33	2,436	46	876	16	271	5	78	3,280	1,096	33
1.8 Kibale	6,570	1,507	23	2,599	40	1,516	23	948	14	66	277	67	24
1.9 Rushenyi	3,931	1,575	40	1,558	40	546	14	252	6	79	158	70	44
1.10 Ndorwa East	704	345	49	264	38	87	12	8	1	87	689	333	48
1.11 Kyaka	7,635	1,237	16	2,565	34	2,435	32	1,398	18	60	116	25	21
2.2 Kabale MC	660	95	14	335	51	227	34	3	0	77	4	1	24
2.3 Kinkiizi East	1,263	220	17	513	41	497	39	33	3	74	10	0	0
2.4 Rukiga South	933	417	45	369	40	135	14	12	1	85	464	246	53
2.5 Igara - East	1,054	131	12	526	50	357	34	40	4	73	894	119	13
2.6 Fortportal MC	559	149	27	275	49	93	17	42	8	75	332	74	22
2.7 Kinkiizi West	1,382	171	12	551	40	593	43	67	5	70	12	1	8
2.8 Rujumbiura	1,442	433	30	584	40	335	23	90	6	75	1,110	330	30
2.9 Bufumbira East	151	62	41	68	45	14	9	7	5	82	3	3	100
2.10 Igara West	1,207	543	45	466	39	137	11	61	5	81	4	3	75
2.11 Kitagwenda	1,220	320	26	420	34	365	30	115	9	70	1,164	303	26
6.1 Bubulo East	235	35	15	53	23	82	35	65	28	54	7	1	14
6.2 Ngora	1,913	115	6	745	39	861	45	192	10	64	77	15	19
6.3 Bukedea	2,391	401	17	777	32	804	34	409	17	61	43	10	23
6.4 Soroti	3,187	532	17	1,235	39	980	31	440	14	64	394	28	7
6.5 Amuria	2,473	139	6	581	23	775	31	978	40	41	2,337	134	6
6.6 Budadiri West	2,682	262	10	963	36	873	33	584	22	57	938	105	11
6.7 Budadiri East	106	22	21	37	35	43	41	4	4	73	92	16	17

Detailed Results

The table below shows the aggregated data entered for each region, district, sub-district and community. Click on a location to drill down to view the statistics for the locations below it.

At a glance		Detail				
Arm	PDM	PBO Nets	Sort by			
Any -	24 month PDM -	All Nets -	Location -			
Presence	Coverage	Usage	Condition	Miscellaneous data	Comments	Accountability
Health sub-district	Sleeping spaces			People		
	#	Covered	%	#	Covered	%
Summary →	167,607	131,037	83	313,948	262,492	90
1.1 Isingiro North	3,324	2,861	88	5,693	4,893	88
1.2 Rubabo	4,742	4,166	90	8,150	7,129	90
1.3 Ntugamo MC	654	547	86	1,058	841	82
1.4 Bumfumbira North	732	615	87	1,304	1,089	88
1.5 Buyanja	5,895	4,799	87	11,184	9,068	87
1.6 Rubanda West	4,863	4,193	91	8,930	7,531	89
1.7 Bukanga	5,966	5,253	91	11,355	9,708	88
1.8 Kibale	7,474	5,782	84	14,283	11,297	85
1.9 Rushenyi	5,100	3,715	77	8,651	6,624	81
1.10 Ndorwa East	736	700	95	1,282	1,152	90
1.11 Kyaka	8,768	6,376	79	16,915	12,356	80
2.2 Kabale MC	664	658	99	1,038	1,016	98
2.3 Kinkiizi East	1,476	1,240	85	2,656	2,655	100
2.4 Rukiga South	1,097	945	87	1,909	1,712	90
2.5 Igara - East	1,126	1,071	96	1,980	1,305	67
2.6 Fortportal MC	767	550	74	1,143	889	81
2.7 Kinkiizi West	1,522	1,321	89	2,695	2,279	87
2.8 Rujumbiura	1,706	1,362	83	2,975	2,416	85
2.9 Bufumbira East	171	147	93	327	273	91
2.10 Igara West	1,416	1,164	83	2,324	1,988	88
2.11 Kitagwenda	1,520	1,139	81	2,798	2,161	84
6.1 Bubulo East	235	180	83	534	408	84
6.2 Ngora	2,096	1,781	86	3,642	3,102	86
6.3 Bukedea	2,388	2,100	92	4,771	3,822	84
6.4 Soroti	3,463	3,027	88	6,380	5,355	85
6.5 Amuria	2,865	1,751	69	5,368	3,309	70
6.6 Budadiri West	3,107	2,321	83	5,545	4,228	84
6.7 Budadiri East	134	103	77	212	176	83
6.8 Usuk	1,330	1,181	90	2,735	2,159	81

Detailed Results

The table below shows the aggregated data entered for each region, district, sub-district and community. Click on a location to drill down to view the statistics for the locations below it.

At a glance **Detail**

Arm: Any - PDM: 24 month PDM - PBO Nets: All Nets - Sort by: Location -

Presence Coverage Usage Condition Miscellaneous data Comments Accountability

												AMF Nets				
Households		Sleeping Spaces		People		Nets Received	Presence	Hung		Present not hung		Missing		Worn / not used		
#	%	#	#/hh	#	#/ss	#	%	#	%	#	%	#	%	#		
58,763	93	167,607	2.85	313,948	1.87	171,141	81	125,361	73	13,642	8	10,093	6	22,045		
1,130	96	3,324	2.94	5,693	1.71	3,236	89	2,526	78	363	11	183	6	164		
1,690	91	4,742	2.81	8,150	1.72	4,676	95	4,087	87	348	7	116	2	125		
220	68	654	2.97	1,058	1.62	656	90	491	75	100	15	51	8	14		
291	97	732	2.52	1,304	1.78	793	88	600	76	101	13	38	5	54		
2,265	90	5,895	2.60	11,184	1.90	5,974	82	4,637	78	265	4	256	4	816		
1,957	96	4,863	2.48	8,930	1.84	5,009	93	3,974	79	670	13	195	4	170		
2,020	99	5,966	2.95	11,355	1.90	5,976	92	5,052	85	464	8	189	3	271		
2,776	91	7,474	2.69	14,283	1.91	7,497	82	5,625	75	514	7	410	5	948		
1,744	94	5,100	2.92	8,651	1.70	4,769	89	3,679	77	558	12	280	6	252		
283	95	736	2.60	1,282	1.74	733	99	695	95	29	4	1	0	8		
3,302	88	8,768	2.66	16,915	1.93	8,792	79	6,248	71	699	8	447	5	1,398		
270	98	664	2.46	1,038	1.56	664	99	652	98	7	1	2	0	3		
552	96	1,476	2.67	2,656	1.80	1,434	96	1,237	86	133	9	31	2	33		
406	98	1,097	2.70	1,909	1.74	1,051	98	928	88	102	10	9	1	12		
387	99	1,126	2.91	1,980	1.76	1,025	96	961	94	22	2	2	0	40		
240	75	767	3.20	1,143	1.49	689	88	517	75	89	13	41	6	42		
542	94	1,522	2.81	2,695	1.77	1,542	92	1,316	85	100	6	59	4	67		
607	94	1,706	2.81	2,975	1.74	1,675	91	1,350	81	166	10	69	4	90		
68	99	171	2.51	327	1.91	187	93	143	76	30	16	7	4	7		
421	92	1,416	3.36	2,324	1.64	1,298	93	1,134	87	74	6	29	2	61		
562	94	1,520	2.70	2,798	1.84	1,451	88	1,087	75	195	13	54	4	115		
94	102	235	2.50	534	2.27	295	64	171	58	17	6	42	14	65		
628	98	2,096	3.34	3,642	1.74	1,943	87	1,647	85	47	2	57	3	192		
885	96	2,388	2.70	4,771	2.00	2,685	78	1,986	74	117	4	173	6	409		
1,052	95	3,463	3.29	6,380	1.84	3,435	84	2,744	80	146	4	105	3	440		
854	98	2,865	3.35	5,368	1.87	2,699	58	1,500	56	58	2	163	6	978		
1,113	97	3,107	2.79	5,545	1.78	3,248	76	2,040	63	419	13	205	6	584		
43	93	134	3.12	212	1.58	119	93	101	85	10	8	4	3	4		
498	87	1,330	2.67	2,735	2.06	1,476	83	1,128	76	98	7	66	4	184		
311	97	860	2.77	1,534	1.78	1,059	76	760	72	46	4	130	12	123		
432	94	1,242	2.88	2,605	2.10	1,302	41	509	39	31	2	47	4	715		

Detailed Results

The table below shows the aggregated data entered for each region, district, sub-district and community. Click on a location to drill down to view the statistics for the locations below it.

At a glance		Detail												
Arm	PDM	PBO Nets	Sort by											
Any	24 month PDM	All Nets	Location											
Presence	Coverage	Usage	Condition	Miscellaneous data	Comments	Accountability								
	Nets Used				Household used				People sleeping under					
	Correctly		Not Correctly		Correctly		Not correctly		Children under 5		Children 5 to 18		Pregnant women	
Health sub-district	#	%	#	%	#	%	#	%	#	%	#	%	#	%
Summary →	125,940	97	4,063	3	51,397	97	1,768	3	52,833	20	84,164	32	6,241	2
1.1 Isingiro North	2,675	94	184	6	1,009	95	55	5	1,251	26	1,494	31	93	2
1.2 Rubabo	3,963	97	110	3	1,532	97	47	3	1,152	16	2,674	38	120	2
1.3 Ntugamo MC	535	100	0	0	197	100	0	0	99	12	295	35	23	3
1.4 Bumfumbira North	557	92	50	8	247	91	23	9	174	16	382	35	12	1
1.5 Buyanja	4,670	99	48	1	1,992	99	23	1	2,072	23	3,232	36	238	3
1.6 Rubanda West	3,884	94	231	6	1,689	95	84	5	1,399	19	2,616	35	110	1
1.7 Bukanga	4,893	98	93	2	1,809	98	41	2	2,122	22	3,436	35	275	3
1.8 Kibale	5,595	98	133	2	2,405	98	61	2	2,226	20	4,224	37	188	2
1.9 Rushenyi	3,671	99	23	1	1,623	99	11	1	1,134	17	2,216	33	105	2
1.10 Ndorwa East	632	92	58	8	252	91	25	9	186	16	417	36	19	2
1.11 Kyaka	6,041	96	226	4	2,792	96	115	4	2,999	24	3,784	31	338	3
2.2 Kabale MC	658	100	0	0	269	100	0	0	213	21	271	27	14	1
2.3 Kinkiizi East	1,225	100	6	0	535	99	6	1	412	16	1,186	45	41	2
2.4 Rukiga South	924	98	18	2	389	97	10	3	251	15	632	37	23	1
2.5 Igara - East	1,061	99	6	1	367	99	2	1	322	25	417	32	165	13
2.6 Fortportal MC	536	99	8	1	215	98	5	2	152	17	272	31	10	1
2.7 Kinkiizi West	1,239	94	78	6	493	94	31	6	368	16	918	40	77	3
2.8 Rujumbiura	1,346	99	10	1	568	99	5	1	464	19	845	35	29	1
2.9 Bufumbira East	142	100	0	0	61	100	0	0	49	18	110	40	3	1
2.10 Igara West	1,118	98	26	2	391	98	7	2	330	17	777	39	26	1
2.11 Kitagwenda	1,035	92	91	8	452	91	43	9	348	16	884	41	54	2
6.1 Bubulo East	180	100	0	0	83	100	0	0	112	27	141	35	10	2
6.2 Ngora	1,736	97	45	3	599	97	16	3	639	21	1,200	39	46	1
6.3 Bukedea	2,079	99	21	1	807	99	8	1	827	22	1,451	38	95	2
6.4 Soroti	2,940	98	74	2	984	98	23	2	1,161	22	1,911	36	132	2
6.5 Amuria	1,630	93	119	7	646	94	43	6	786	24	1,089	33	76	2
6.6 Budadiri West	2,201	95	116	5	913	96	37	4	772	18	1,580	37	63	1
6.7 Budadiri East	100	97	3	3	42	98	1	2	34	19	72	41	6	3

[Home](#) > [PDMs](#) > [Re-visit Analysis](#)

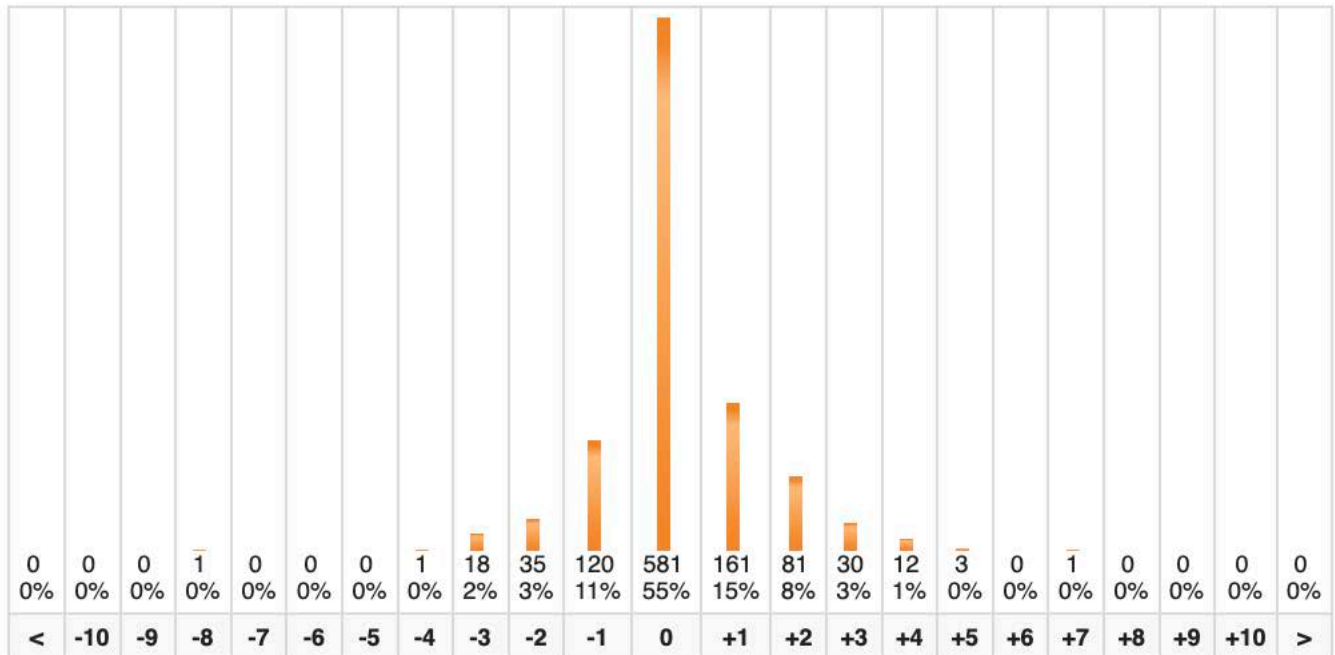
Data Collection Analysis

The table below shows the comparison of main data and revisit data for matched households. All differences are calculated as main data minus revisit data.

Click on a location to drill down to view the statistics for the locations below it.

Arm PDM [Refresh](#)**Total records entered:** 17,678 **Revisit records entered:** 1,310 (7.4%) **Matching records:** 1,047 (79.9%)[Nets Hung](#)[Present Not Hung](#)[Sleeping Spaces](#)[Are Used Correctly?](#)[People In The Household](#)

Region	# HHs Matched	Nets Hung					
		Main	Revisit	Δ	%	$\sigma 1$	$\sigma 2$
Western	1,047	2,180	1,953	+227	+10	0.7	1.23
	1,047	2,180	1,953	+227	+10	0.7	1.23



Region	<	-10	-9	-8	-7	-6	-5	-4	-3	-2	-1	0	+1	+2	+3	+4	+5	+6	+7	+8	+9	+10	>
Western	0	0	0	1	0	0	0	1	18	35	120	581	161	81	30	12	3	0	1	0	0	0	0

[Home](#) > [PDMs](#) > [Re-visit Analysis](#)

Data Collection Analysis

The table below shows the comparison of main data and revisit data for matched households. All differences are calculated as main data minus revisit data.

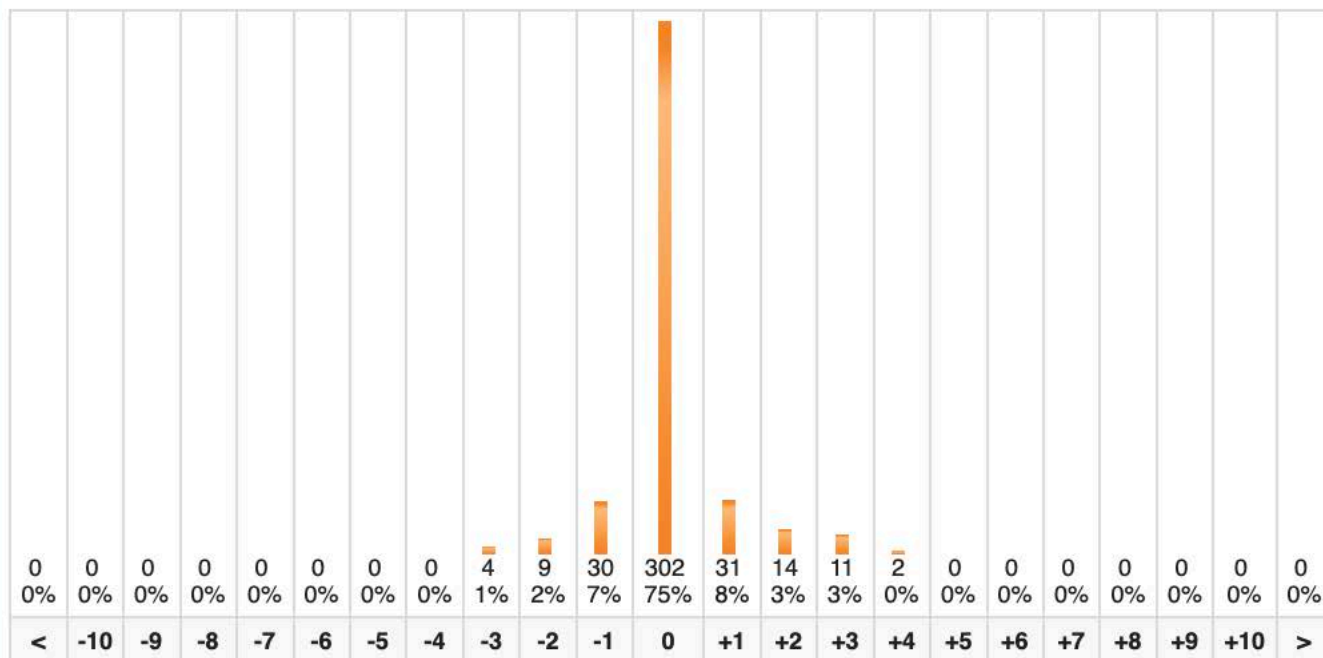
Click on a location to drill down to view the statistics for the locations below it.

Arm PDM [Refresh](#)

Total records entered: 4,055 Revisit records entered: 432 (10.7%) Matching records: 403 (93.3%)

[Nets Hung](#)[Present Not Hung](#)[Sleeping Spaces](#)[Are Used Correctly?](#)[People In The Household](#)

		Nets Hung					
Region	# HHs Matched	Main	Revisit	Δ	%	σ 1	σ 2
Western	403	972	932	+40	+4	0.4	0.89
	403	972	932	+40	+4	0.4	0.89



Region	<	-10	-9	-8	-7	-6	-5	-4	-3	-2	-1	0	+1	+2	+3	+4	+5	+6	+7	+8	+9	+10	>
Western	0	0	0	0	0	0	0	0	4	9	30	302	31	14	11	2	0	0	0	0	0	0	0

Data Collection Analysis

The table below shows the comparison of main data and revisit data for matched households. All differences are calculated as main data minus revisit data.

Click on a location to drill down to view the statistics for the locations below it.

Arm PDM

Refresh

Total records entered: 37,030 Revisit records entered: 4,404 (11.9%) Matching records: 3,966 (90.1%)

Nets Hung

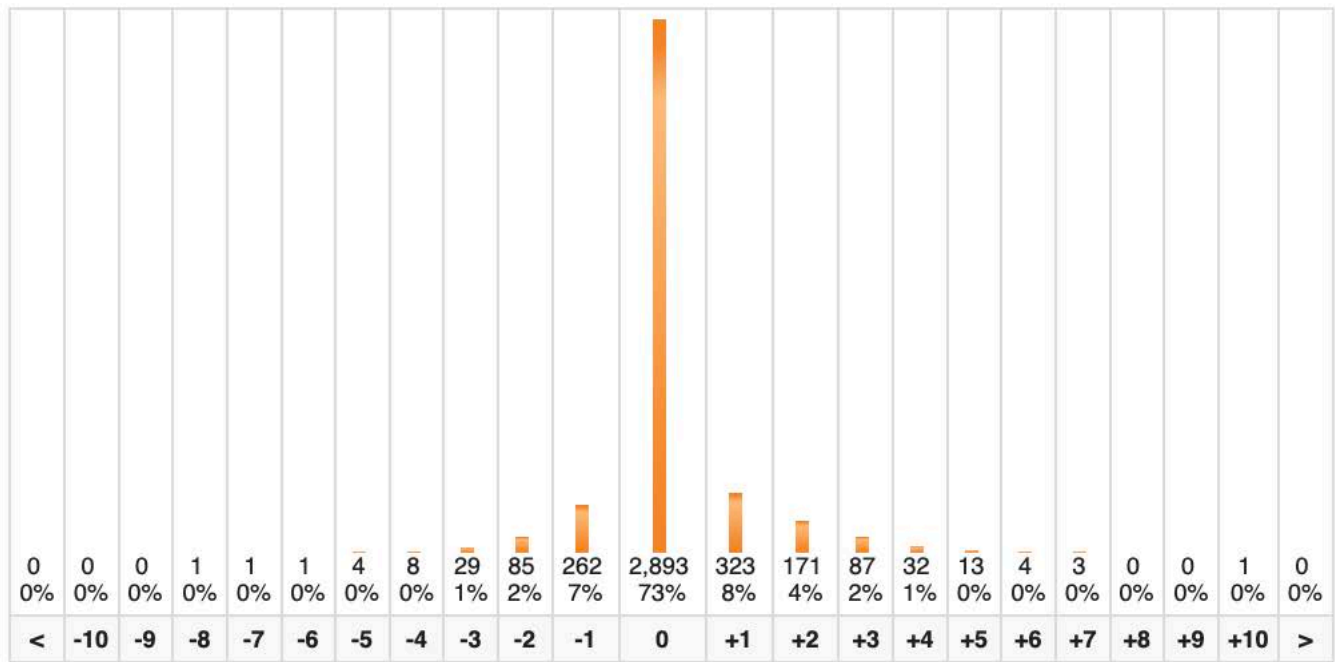
Present Not Hung

Sleeping Spaces

Are Used Correctly?

People In The Household

Region	# HHs Matched	Nets Hung					
		Main	Revisit	Δ	%	$\sigma 1$	$\sigma 2$
Eastern	3,792	7,767	7,110	+657	+8	0.4	1.03
Western	174	353	327	+26	+7	0.7	1.21
	3,966	8,120	7,437	+683	+8	0.4	1.04



Region	<	-10	-9	-8	-7	-6	-5	-4	-3	-2	-1	0	+1	+2	+3	+4	+5	+6	+7	+8	+9	+10	>
Eastern	0	0	0	1	1	1	2	7	26	84	240	2,794	300	152	83	32	13	4	3	0	0	1	0
Western	0	0	0	0	0	0	2	1	3	1	22	99	23	19	4	0	0	0	0	0	0	0	0



Detailed Results

The table below shows the aggregated data entered for each region, district, sub-district and community. Click on a location to drill down to view the statistics for the locations below it.

[At a glance](#)[Detail](#)

Arm

PDM

PBO Nets

Sort by

Any

24 month PDM

All Nets

Location

[Presence](#)[Coverage](#)[Usage](#)[Condition](#)[Miscellaneous data](#)[Comments](#)[Accountability](#)

Main Data

Health sub-district	100% Registration records	Sample size %	Sample size target	Main data provided #	Main data provided %	Total PDM data collected #	Total PDM data collected % (% of provided)	Δ #	Δ
Summary →	2,929,670	1.95	57,215	63,158	2.16	58,718	2.00 (93)	-4,440	-7
1.1 Isingiro North	22,420	5.00	1,121	1,173	5.23	1,128	5.03 (96)	-45	-3
1.2 Rubabo	35,592	5.00	1,780	1,863	5.23	1,690	4.75 (91)	-173	-9
1.3 Ntugamo MC	5,688	5.00	284	322	5.66	220	3.87 (68)	-102	-31
1.4 Bumfumbira North	5,592	5.00	280	299	5.35	291	5.20 (97)	-8	-2
1.5 Buyanja	47,949	5.00	2,397	2,507	5.23	2,263	4.72 (90)	-244	-9
1.6 Rubanda West	40,000	5.00	2,000	2,047	5.12	1,957	4.89 (96)	-90	-4
1.7 Bukanga	38,957	5.00	1,948	2,047	5.25	2,018	5.18 (99)	-29	-1
1.8 Kibale	58,516	5.00	2,926	3,059	5.23	2,771	4.74 (91)	-288	-9
1.9 Rushenyi	36,475	5.00	1,824	1,863	5.11	1,743	4.78 (94)	-120	-6
1.10 Ndorwa East	6,074	5.00	304	299	4.92	283	4.66 (95)	-16	-5
1.11 Kyaka	73,715	5.00	3,686	3,772	5.12	3,297	4.47 (87)	-475	-12
2.2 Kabale MC	16,366	1.50	245	276	1.69	270	1.65 (98)	-6	-2
2.3 Kinkiizi East	31,261	1.50	469	575	1.84	552	1.77 (96)	-23	-4
2.4 Rukiga South	24,447	1.50	367	414	1.69	406	1.66 (98)	-8	-1
2.5 Igara - East	21,224	1.50	318	391	1.84	387	1.82 (99)	-4	-1
2.6 Fortportal MC	20,465	1.50	307	322	1.57	239	1.17 (74)	-83	-25
2.7 Kinkiizi West	32,091	1.50	481	575	1.79	541	1.69 (94)	-34	-5
2.8 Rujumbiura	38,651	1.50	580	644	1.67	606	1.57 (94)	-38	-5
2.9 Bufumbira East	3,487	1.50	52	69	1.98	68	1.95 (99)	-1	-1
2.10 Igara West	27,074	1.50	406	460	1.70	420	1.55 (91)	-40	-8
2.11 Kitagwenda	34,796	1.50	522	598	1.72	562	1.62 (94)	-36	-6



Detailed Results

The table below shows the aggregated data entered for each region, district, sub-district and community. Click on a location to drill down to view the statistics for the locations below it.

At a glance**Detail**

Arm

PDM

PBO Nets

Sort by

Any

24 month PDM

All Nets

Location

Presence**Coverage****Usage****Condition****Miscellaneous data****Comments****Accountability****e-visit data****Spares**

Location ID	Revisit collected #	Revisit collected % (% of provided)	Δ #	Δ %	Spares provided #	Spares provided %	% of main data that is spares	Spares used	% of visited that is spares	% of target that is spares	% collected matched to HH list
2.77	5,971	9.45 (74)	-2,095	-25.97	19,222	0.66	30.43	10,228	17.4	17.9	99.9
3.63	72	6.14 (64)	-41	-36.28	357	1.59	30.43	192	17.0	17.1	100.0
7.62	85	4.56 (60)	-57	-40.14	567	1.59	30.43	272	16.1	15.3	100.0
2.42	24	7.45 (60)	-16	-40.00	98	1.72	30.43	43	19.5	15.1	100.0
4.05	36	12.04 (86)	-6	-14.29	91	1.63	30.43	52	17.9	18.6	100.0
0.53	165	6.58 (63)	-99	-37.50	763	1.59	30.43	444	19.6	18.5	100.0
3.01	146	7.13 (89)	-18	-10.98	623	1.56	30.43	344	17.6	17.2	99.9
1.04	193	9.43 (85)	-33	-14.60	623	1.60	30.43	369	18.3	18.9	100.0
3.60	170	5.56 (65)	-93	-35.36	931	1.59	30.43	481	17.4	16.4	99.9
7.62	109	5.85 (77)	-33	-23.24	567	1.55	30.43	322	18.5	17.7	100.0
3.03	0	0.00 (0)	-24	-100.00	91	1.50	30.43	24	8.5	7.9	100.0
3.28	180	4.77 (76)	-57	-24.05	1,148	1.56	30.43	615	18.7	16.7	99.9
3.77	0	0.00 (0)	-38	-100.00	84	0.51	30.43	29	10.7	11.8	100.0
3.78	92	16.00 (85)	-16	-14.81	175	0.56	30.43	65	11.8	13.9	100.0
2.56	35	8.45 (67)	-17	-32.69	126	0.52	30.43	81	20.0	22.1	100.0
3.37	27	6.91 (42)	-37	-57.81	119	0.56	30.43	47	12.1	14.8	100.0
1.18	8	2.48 (22)	-28	-77.78	98	0.48	30.43	49	20.5	16.0	100.0
7.04	87	15.13 (89)	-11	-11.22	175	0.55	30.43	87	16.1	18.1	100.0
3.32	54	8.39 (90)	-6	-10.00	196	0.51	30.43	119	19.6	20.5	100.0
3.84	12	17.39 (92)	-1	-7.69	21	0.60	30.43	10	14.7	19.1	100.0
5.22	45	9.78 (64)	-25	-35.71	140	0.52	30.43	78	18.6	19.2	100.0
4.05	42	7.02 (50)	-42	-50.00	182	0.52	30.43	104	18.5	19.9	100.0