

ROTARIANS AGAINST MALARIA



LONG LASTING INSECTICIDAL NET DISTRIBUTION REPORT

EAST SEPIK PROVINCE Angoram, Maprik, Wewak and Yanogoro Saussi Districts

Carried Out In Conjunction With The Provincial And District Government Health
Services And The Church Health Services Of East Sepik Province

With Support From Against Malaria Foundation and Global Fund

5 November 2017 to 7 March 2018



Table of Contents

Executive Summary.....	3
Background	4
Schedule.....	6
Methodology	7
Results.....	11
Conclusions.....	13
Acknowledgements	14
Appendix One – History Of LLIN Distribution In PNG.....	16
Appendix Two – Malaria In East Sepik Compared With Other Provinces.....	19
Appendix Three - Malaria By Altitude	21
Appendix Four – Other Photographs	22
Appendix Five - Map Of East Sepik Showing Census Points Of 2000 Census	24
Annex One	Detailed Distribution Data For Angoram District
Annex Two	Detailed Distribution Data For Maprik District
Annex Three	Detailed Distribution Data For Wewak District
Annex Four	Detailed Distribution Data For Yangoru Saussi District

Executive Summary

East Sepik is a province situated on the north coast of the mainland of PNG. Most of the province lies within the river basin of the Sepik River. The northern part of the province is mainly accessible by road, but the southern part is generally only accessible by boat (See Appendix Three and Four). Most of the province is at low altitude with high mountains on the southern border with Enga Province and low-lying hills along the coast.

A survey and distribution of Long Lasting Insecticidal Nets (LLINs) to family level was carried out in East Sepik Province between 5 November 2017 and 7 March 2018 in the four districts of Angoram, Maprik, Wewak and Yangoru Saussi. Maprik, Wewak and Yangoru Saussi are mainly accessible by road while most of Angoram District can only be reached by boat.

Table One shows the estimated population and actual population found in each district together with the number of LLINs distributed in each district. In total, 201,853 LLINs were distributed to a population of 410,558 people. This resulted in distribution of 49.2 nets for every 100 people in the province.

TABLE ONE – Population And Nets Distributed In 2017

District	Census Population 2000	Population Surveyed 2014	Population Surveyed 2017	House Holds Surveyed 2017	Nets Issued 2017
Angoram	68,796	119,600	133,238	21,830	64,921
Maprik	57,806	83,303	91,170	18,269	45,015
Wewak	63,965	97,298	112,395	19,164	54,968
Yangoru	47,809	67,943	73,755	14,945	36,949
Totals	238,376	368,144	410,558	74,208	201,853

A further 456 LLINs were donated to health centres as nets were surplus to requirement and in most cases could not be easily returned to a central location. These nets would be used by pregnant mothers and for hospital beds where needed.

The overall operational cost of the programme was 770,427.46 Kina (Approximately US\$237,054) resulting in a cost of about 3.82 Kina or US\$1.18 per net delivered which was about 19% over the anticipated overall budget. There were overspends in all categories but one aspect caused the greatest cost which is unbudgeted that it was necessary to get full security on the containers of nets as it was estimated that there was a big security risk and good chance that the containers would have been broken into if they had not been protected by a Security company. This cost alone added another 9% to the budget.

The distribution went very well in East Sepik except that the rivers were dry in Angoram in December which made access to remote villages very difficult. This was one of the reasons why operations in Angoram were delayed until after the New Year. Otherwise the distribution programme was carried out without any real difficulties apart from the usual poor infrastructure and bad weather.

Feedback from partners and communities suggest they were happy with the methodology used as the process appeared transparent to all concerned. However, as always, there were a few families who complained that they did not receive enough nets but for the most part it is believed that this was a result of families not fully understanding the allocation system used.

This distribution of LLINs was kindly funded through a donation of nets from the Against Malaria Foundation (AMF) with all delivery costs of distribution were covered by Global Fund (GF). Without these two donors, the delivery of nets into East Sepik would not have been possible.

The history of LLIN distribution in PNG and East Sepik Province is discussed in Appendix One and the malaria situation and stratification of malaria in East Sepik is discussed in Appendix Two and Appendix Three.



Fig.1 – Initial Meetings With Provincial Malaria Supervisor In Wewak

Background

Rotarians Against Malaria (RAM) is a nationally based organisation which was formed in 1997 by the Port Moresby Rotary Club in recognition of the tremendous burden that malaria imposes on the people of PNG.

RAM has an organizational mandate to work in malaria control and the distribution of LLINs in Papua New Guinea and has been working for many years with the National Department of Health (NDOH) and other partners including multilateral and bilateral agencies such as UNICEF and WHO (World Health Organisation), NGOs and church groups. (See Appendix One for full history of LLIN Distribution)



Fig.2 Training in Kabuku

Since 2010, RAM has been coordinating the distribution of nets to all districts and provinces on a three-year recurrent cycle. This effectively means that RAM visits every village in PNG every three years. RAM is funded by the Global Fund and since 2017 also from Against Malaria Foundation which supplied PNG with all its nets. The Global Fund resources are used for LLIN distribution costs and other relevant administration costs.

Generally, LLINs have been distributed to household level throughout the country but when shortage of funds occurred, different strategies of distribution have been used.

PNG can be roughly divided into five epidemiological zones.

- a) Areas which lie above 2000m in altitude will no longer receive LLINs as malaria transmission is not considered possible at these altitudes.
- b) Low lying areas of the country up to 1200m which have stable malaria endemicity and often have poor access to health will continue to have household distributions.
- c) Areas from 1200 to 1600m which are generally considered to be of low transmission potential but may be epidemic at times due to poor immunity and changing weather conditions. LLIN distribution will continue in these settings.
- d) Highlands regions between 1600 to 2000m in altitude such as Mount Hagen which have low malaria endemicity and generally has easy access to health services. These are low priority areas during funding constraints. However, RAM is trying to find additional funds to cover these areas
- e) In urban and peri-urban areas such as Port Moresby which are low lying areas with easy access to health, nets will not be distributed when funds are not sufficient. Nets will be supplied to these areas through the private sector.

As a result of this stratification and when funds had been reduced such as the end of 2014, areas above 2000m no longer received nets and areas from 1600 to 2000m only received under five campaigns in 2015 and 2016. However, due to the LLIN donation of Against Malaria Foundation (AMF) in 2017, all areas are now receiving household distribution of nets again except those areas above 2000m, and some urban areas such as NCD, Goroka, Mount Hagen and Mendi.

Only a few scattered villages of East Sepik lie above 2000m, therefore in 2017, for practical reasons, all areas in all districts were included for LLIN household distribution at a rate of approximately one nets for every two people.

One of the conditions of the AMF donation is that RAM would strengthen the way in which surveys are carried out. These new innovative processes are described in the Methodology Section. These methodologies now being carried out since the beginning of 2017. The major change to the survey methodology suggested by AMF is that previously a village meeting was called after a survey was carried out where names of family members were read out to ensure that all households had been surveyed. Instead of this process, a summary of every village surveyed is posted for 24 hours in a public place so that villages can ensure that all their family members have been included in the survey. As a further verification, RAM and local health staff team members carry out random house surveys of 6% of households in every village to ensure that the survey process has been carried out correctly.



Fig.3 – Training of Volunteers in Jangit

For household LLIN distributions, regardless of where they are carried out, must include a survey and a distribution phase though implementation methods may vary considerably depending on specific circumstances. RAM's approach has been to concentrate on quality distribution and continue to develop methodologies that ensure all recipients in an area actually receive nets and that this can be reported accurately.

The other major change to the original PNG programme of 2004 to 2009 carried out by the NDOH is that nets are allocated to families on a needs basis rather than simply the number of people in the family. Analysis of National Capital District (NCD) LLIN distribution data has shown that this gives a ratio of nets needed to be about 47 for every 100 people. In the previous LLINs distribution of Round Three in 2006 to 2010, nets were allocated at a rate of one net to every 2.5 people. With the programme only receiving 80% of national needs, and most provinces distributing for example two nets to families of three, in practically every province, nets ran out before the end of the distribution. The RAM programme makes all attempts to assure that this does not happen by collecting all population information first and then allocating the nets based on needs as well as availability of nets to ensure that all families receive nets throughout any given province. The only scenario where survey and net distribution may be simultaneous is in very remote locations where it is not practical to return a second time. This is particularly the case in remote villages which can only be reached by boat and it is costly and impractical to return to the villages for a second time.

In terms of coordination, RAM officers are allocated to specific LLGs or health centres where they coordinate the programme together with local health staff. In this capacity, RAM officers act as facilitators in terms of technical guidance to district health teams in each LLG as well as acting as financial officers and assuring quality control of activities taking place.

Schedule

This distribution took place in the eighth year in which RAM has been involved in the distribution of nets with Provincial Health Authorities in PNG. Survey and distributions were carried out as per the table below. The programme started in Mapril and Yangoru Saussi which are mostly accessible by road and then expanded into Wewak at the beginning of December. However, it was not possible to complete Wewak before the end of the year so operations in Wewak and then Angoram were completed after the New Year break. Most of Angoram is only accessible by boat.

TABLE TWO
General Timetable Of Activities In East Sepik

District	Survey		Distribution	
	Start	Finish	Start	Finish
Angoram	03.02.18	01.03.18	12.02.18	07.03.18
Maprik	07.11.17	29.11.17	01.12.17	08.12.17
Wewak	01.12.17	31.01.18	01.12.17	03.03.18
Yangoru Saussi	05.11.17	27.11.18	13.11.17	09.12.17

Methodology

Prior to planning and implementation, a master list of all villages of East Sepik was drawn up using data from the 2000 Census and the last RAM survey of 2014. Villages in the list were organised by LLG and Ward. In this master list, the estimated population for 2017 for each village is recorded in two ways, first estimated population figures from the 2000 Census and the estimated annual growth rate for East Sepik and then by taking the population surveyed in 2014 and applying the annual growth rate to each village.

In all areas, Health Centres form the hub from which distribution takes place to the respective villages in each health centre's catchment area. Therefore, with the planning data at hand, the project manager of RAM works together with the Provincial Health Office to allocate every village to its nearest health centre (government or Church Based) and outlines how each village is reached from each health centre. From this it is possible to create a budget, estimate how many nets are needed to be sent to each health centre and work out any other logistic considerations such as use of airplanes or boats to deliver nets to some remote areas.

Once all logistical needs are calculated and nets delivered to the province or district, a RAM team will travel to the province. Once there in the province, RAM officers are allocated to work with each health centre which becomes the centre of operations for that area.

With the arrival of RAM officers, each health facility identifies health staff members or non-health volunteers to be involved with the programme. If local health staff are selected then they are referred as District Health Team (DHT) but if a non-health staff is selected then s/he is termed as a Team Leader. Both DHTs and Team Leaders are responsible for the survey and distribution of nets. Each DHT and Team Leader work only in the area in which the health facility is based.

Before any activities take place, RAM officers are expected to work with health staff and other team leaders to make detailed plans (micro-planning) of their activities for training, survey, verification and distribution of nets. This process involves- making maps of the area, deciding how many teams are needed, and then making detailed work plans for each of the team members. This process also involves verifying that no villages have been left out of the census list and that the whole area is covered.

Also prior to field activities in any given LLG or health centre, a social awareness campaign is carried out in all villages informing villagers of the upcoming survey and distribution. This is also used as an opportunity for RAM officers to become familiar with each area. During this process, key malaria messages are also discussed with villagers such as the need to use LLINs every night.

During the social awareness campaign, a one-day training meeting is normally held at each health facility for all DHT members in that area who jointly carry out the micro-planning

exercise. These training and micro-planning sessions as well as all other activities associated with the programme are coordinated by RAM project officers together with health counterparts at provincial and district levels. RAM officers also have the responsibility to ensure the LLINs operation kept in line with the original budget.

Survey

The survey was carried out in the following way.

- 1) When arriving at a village and before starting the census process, a meeting is held with village elders explaining the process.
- 2) If village elders have an up to date list of all village occupants, the team would use this list to compile a census.
- 3) Where a village is small, e.g. less than 30 families, team members may carry out the census by themselves.
- 4) Where villages were large, village volunteers were identified with the assistance of the village chiefs, elders, health staff and councillors. One volunteer was chosen for each group of about 50 families with volunteers chosen by natural divisions in the village e.g. clans where one volunteer would make a list of only one clan. These volunteers were trained to carry out the survey by actually surveying houses with the team leaders supervising and assessing the recording. Once the team leader was confident that the volunteers knew the survey methodology, they were left to continue with the household survey with survey teams returning within an agreed period to verify the work of the survey volunteers, collect survey books and also to pay the survey volunteer if the work has been carried out correctly. The training of volunteers may occur in groups or individually depending on access to the village and its proximity to other villages.
- 5) For each household surveyed, all family members who normally reside at the household for a minimum of nine months were recorded by Name, Age, Sex and Relationship to head of household. All names and other information was recorded in the survey book with one survey form being used for each household.
- 6) After surveying a household, a white copy of the census form was given to the head of household or most senior person present in the household.
- 7) Where a whole household was absent, information was taken from the neighbours and the white survey form left with them.
- 8) In all cases, after the census/list was finished, all the information about the households and number of household members is entered into a summary sheet. This list is then hung in a public place where all villages can verify that the right number of family members for each household has been recorded and that all families have been included in the survey. After the list has been in a public place for 24 hours, then the volunteer requests for the RAM officer and or DHT to visit the village.
- 9) RAM officers and DHTs must visit three households randomly from each survey book (6%) and verify that the survey has been carried out correctly. Only when this has been done, then the volunteer can be paid.
- 10) If a village was surveyed by more than one volunteer, then volunteers were asked to work together so that lists can be hung together and the village volunteers can be verified at the same time. This process also ensures that households do not appear on more than one list. After this process, both the volunteers and the village elders sign a form to verify that this was done.
- 11) All village volunteers received a standard payment of 20 kina a day. Experience has shown that volunteers can usually only survey about 30 families a day, so for the most part, they would receive up to two days allowance to complete a survey book.
- 12) All volunteers were also given a small training manual. Contained in this training manual are key health education messages about malaria which volunteers are expected to discuss with households. This perhaps is the only project in PNG that is able to reach down to potentially every household in the country.



Fig.4 Distributions In Kambuku

To aid with the survey, the master plan with names of all census units in all the wards in the district had been printed out and given to all the DHTs and team leaders. This document also provides the projected population per census unit as well as other information which might be useful to the area concerned.

After collecting survey data from each village, the information is immediately compared with the data on the master sheet. Where the surveyed population is very different from the projected population, the project staff make enquiries into the reasons for these discrepancies.

Following the survey, all data was entered into a computer where possible or entered into a master sheet of the area concerned. For each village, nets were allocated to each family on a needs basis and this is also entered into the computer or master sheet. This process ensured that all villages received nets and that there would be no shortfalls.

The needs basis in PNG is based on the assumption that children under the age of six sleep with their parents, after which boys and girls are grouped separately from their parents. Nets are also allocated based on the number of children in the house their ages, and whether there are other dependents living in the households such as grandparents. A full description of the allocation system can be obtained from RAM officers but suffice to say a family of four could receive between one to four nets depending on the sex and age of family members.

Nets are allocated to each LLG based on assumed populations of each LLG and it was important prior to the distribution to ensure that when allocations had been carried out to families and villages that there were enough nets available to cover each and every family.

Distribution

There was no official launch for the LLINs distribution. However, prior to distribution there was a social awareness phase where the project teams informed communities about the arrival of the distribution teams, especially those accessible by road.

The LLINs were then distributed to teams depending on the needs of each village. The LLINs were then distributed by village or wards depending on whether villages were close together.

In this latter case, a central location was identified in the ward and distribution of nets was carried out. In terms of distribution sites, villages were organised in different ways to make the flow of nets easy and effective. However, the actual organisation depended on each team and the structure of the various groups receiving nets.

All net packaging was opened at distribution site with a district code printed on each net e.g. ES17 for East Sepik 2017. This code is added to identify nets to assist in future monitoring exercises as well as discouraging householders from selling the nets on the open market.

Some examples of the process used to control the crowd includes;

- Arranging the people according to the serial numbers in the survey books e.g. 72001 - 72050 and then calling the names and the serial numbers.
- Call the names of the owners of the households, collect the white copy and give the nets.
- Wait for everyone to come to the distribution site, collect all the white copies and sort the copies with the pink copies. Call the names on the white copies and give the nets.

Some of the following control methods were used.

- Everyone who presented with a white copy was given LLINs at the distribution site with LLINs only given to the owner of the house or a member of the house whose name is written on the back of the survey form.
- Those people who lost the white receipts were left to the end of each distribution, with nets only being issued if the name of the person collecting the nets was on the back of the pink copies.
- For those families who were absent at the time of distribution, their names were written in a form – MOSQUITO NETS HELD IN TRUST BY VILLAGE CHIEFS FORM and the nets allocated to missing families were given to chiefs or any person entrusted by the community with the forms for these families to collect their LLINs later.
- Householders are now being asked to make a thumb print as proof of delivery of nets to a household. The Global Fund had formally asked that householders should sign for delivery of nets. This was considered problematic as many householders are illiterate and even where householders can write, this process takes a long time in what is often a very chaotic and charged environment where speed is of the essence.

It should also be noted, that due to the very remote locations found in some LLGs of the province, surveys and distributions took place at more or less the same time.. This is particularly true for mountainous villages or small islands which might take several hours or days to reach. In these instances, estimations based on the 2000 Census data and local knowledge to pre-allocate nets to these areas. Teams were then dispatched to these areas with nets. On arrival in these remote places, surveys took place followed by immediate distribution of nets based on the survey results.

Other details

In the case of East Sepik Province, all LLINs were delivered to Lae by ship from Vietnam (via Singapore) in eleven containers where they were custom cleared. These containers were temporarily stored in Lae before being transported by road to Wewak where they were stored at the Provincial Malaria Office and the Provincial Administrators Office. Normally these containers would be stored in the Wewak Hospital which is secure, but as RAM was forced to store the containers elsewhere in less secure locations, it was necessary to employ a security company.

Results

The programme surveyed a total of 410,558 people in the four districts to which were distributed 201,853 LLINs. This resulted in distribution of 49.2 nets for every 100 people in the province. Table Three shows the distribution by district while Table Four shows the distribution by LLG.

TABLE THREE
Nets Distributed At District Level In East Sepik

District	Census Population 2000	Population Surveyed 2014	Population Surveyed 2017	House Holds Surveyed 2017	Nets Issued 2017	Growth Rate Against 2014 Survey	Growth Rate Against 2000 Survey	Nets Distributed Per 100 People
Angoram	68,796	119,600	133,238	21,830	64,921	3.67	3.96	48.7
Maprik	57,806	83,303	91,170	18,269	45,015	3.05	2.72	49.4
Wewak	63,965	97,298	112,395	19,164	54,968	4.93	3.37	48.9
Yangoru Saussi	47,809	67,943	73,755	14,945	36,949	2.77	2.58	50.1
Totals	238,376	368,144	410,558	74,208	201,853	3.70	3.25	49.2

TABLE FOUR
Nets Distributed At LLG Level In East Sepik

LLG	District	Population Surveyed 2014	Population Surveyed 2017	House Holds Surveyed	Nets Issued	Growth Rate Against 2014 Survey	Nets Per 100 People
Angoram Middle Sepik	Angoram	32,411	37,551	6,170	17,932	5.03	47.8
Kwarawari Rural	Angoram	16,238	17,965	2,623	8,805	3.43	49.0
Keram Rural	Angoram	29,121	33,485	5,222	16,314	4.76	48.7
Marienburg Rural	Angoram	27,709	29,392	4,970	14,324	1.98	48.7
Yuat Rural	Angoram	14,121	14,845	2,845	7,546	1.68	50.8
Albiges/Mablep Rural	Maprik	15,595	17,338	3,757	8,035	3.59	46.3
Mumbita/Muhian Rural	Maprik	20,718	22,453	4,369	11,274	2.72	50.2
Maprik/Wora Rural	Maprik	27,524	30,243	5,298	14,953	3.19	49.4
Yamil/Tamaui Rural	Maprik	19,466	21,136	4,845	10,753	2.78	50.9
Boikin/Dagua Rural	Wewak	22,511	23,241	4,583	11,462	1.07	49.3
Turubu Rural	Wewak	13,197	15,423	2,650	7,463	5.33	48.4
Wewak Island Rural	Wewak	12,345	13,257	2,315	6,483	2.40	48.9
Wewak Rural	Wewak	19,809	25,445	4,615	12,436	8.70	48.9
Wewak Urban	Wewak	29,436	35,029	5,001	17,124	5.97	48.9
East Yangoru Rural	Yangoru Saussi	20,703	22,464	4,223	10,839	2.76	48.3
Numbor Rural	Yangoru Saussi	16,480	17,235	3,700	8,963	1.50	52.0
Sausso Rural	Yangoru Saussi	13,159	14,353	3,011	7,109	2.94	49.5
West Yangoru Rural	Yangoru Saussi	17,601	19,703	4,011	10,038	3.83	50.9
Final		368,144	410,558	74,208	201,853	3.70	49.2

Both Table Three and Table Four show a great increase in the population. From 2011 to 2014, a growth rate of only 2.31 against the 3.7 recorded during this programme. The data also suggests an urban drift with very high growth rates recorded in and around Wewak. However,

growth rates for Wewak also suggest that perhaps there is also a population drift into the province from other provinces as well.

Referring to Table Five, it can be seen that a further 456 LLINs were donated to health centres as nets were surplus to requirement and in most cases could not be easily returned to a central location, particularly from health centres which could only be reached by boat. These nets would be used by pregnant mothers and for hospital beds, where needed.

TABLE FIVE
Nets Donated To Health Centres

District	LLG	HC	Donated
Angoram	Keram Rural	Kambot SHC	31
Angoram	Keram Rural	Kambuku HC	34
Angoram	Marienburg Rural	Marienburg HC	16
Angoram	Keram Rural	Jangit SHC	10
Maprik	Mumbita/Muhian Rural	Albinama SHC	36
Maprik	Mumbita/Muhian Rural	Brugam HC	50
Maprik	Mumbita/Muhian Rural	Ilahita SHC	40
Maprik	Yamil/Tamaui Rural	Kombikum HC	12
Maprik	Yamil/Tamaui Rural	Ulupu SHC	35
Wewak	Turubu Rural	Tumurau HC	75
Wewak	Turubu Rural	Koil HC	64
Wewak	Wewak Island Rural	Kairiru SHC	53
Final			456

TABLE SIX
Cost Of Programme In East Sepik

Cost Category	Budget	Actual	Variances	% Variance
Human Resources	K182,478.00	K213,597.51	-31,119.51	-17.0538
Fuel Cost	K74,594.00	K90,283.29	-15,689.29	-21.0329
Car Hire Cost	K239,400.00	K255,068.92	-15,668.92	-6.54508
Boat Hire Cost	K115,500.00	K122,960.00	-7,460.00	-6.45887
Stationeries/Supplies	K3,000.00	K2,572.71	427.29	85.757
5% Contingency	K32,011.95	K85,945.03	-53,933.08	-168.478
Total	K646,983.95	K770,427.46	-K123,443.51	-19.0798

Referring to Table Six, it can be seen that the overall operational cost of the programme was 770,427.46 Kina (Approximately US\$237,054) resulting in a cost of about 3.82 Kina or US\$1.18 per net delivered which was about 19% over the anticipated overall budget. There were overspends in all cost categories but additional security cost required in East Sepik was not anticipated thereby remained unbudgeted. There was a big security risk and good chance that the containers would have been broken into if they had not been protected by a Security company. This cost alone added another 9% to the budget.

The project also looked at radio or cell telephone coverage in the different parts of East Sepik. Referring to Table Seven, the data suggests that in East Sepik, there is reasonable coverage of cell networks and radio networks throughout the province even in the remote parts of Angoram.

TABLE SEVEN
Cell and Radio Coverage In East Sepik

District	House Holds Surveyed	Villages	Digicel	Bmobile	Houses with Radios	Villages with Radio Network
Angoram	21,830	287	120	27	3,590	231
Maprik	18,269	179	174	0	8,275	174
Wewak	19,164	316	227	78	7,706	256
Yangoru	14,945	183	182	0	2,758	181
Total	74,208	965	703	105	22,329	842



Fig.5 – Distributions In Marienburg

Conclusions

Overall it can be said that the East Sepik distribution was a success both in terms of results and joint coordination of the project by RAM field staff members together with provincial and district health staff and Catholics, Seventh Day Adventist (SDA) and South Sea Evangelical Church Health Services who have a presence in the province. Through this collaboration, the data suggests that all villages and practically all families in those villages received nets except those people who were having a tribal fight at the time of distribution.

The major achievement of the programme was also demonstrating that the new verification process introduced by RAM was practical and was generally accepted by health staff, communities and volunteers as the survey system is now more transparent. One result of this is that RAM officers generally received far less complaints at the time of this distribution than the previous distributions.

As with other provinces in the country where RAM has operated in over the last seven years, the methodologies used this time appeared practical and were openly welcomed by both villagers and implementers, particularly the practice of hanging up the list of names in the middle of the village following a survey: this allowed communities to feel that they were part of a transparent process. This is not to say that perhaps some extra people managed to slip into the books, but in general, it was felt that the system was fair and included practically everyone concerned. The use of the master lists also ensured that all villages were reached and accounted for.

The only issue that created some problems was there were volcanic eruptions on the islands of Kadovar and Biem in early January 2018 before the teams returned to Wewak. There were

emergency responses and one possible consequence of this was that Wewak ran out of fuel which delayed operations in Wewak when the team arrive two weeks later.

The review of the data prior to the distribution was also important. This ensured that all villages and families received the correct numbers of nets. The 2000 Census Lists were very important to ensure that survey teams reached all villages: without the complete list of villages, it would be very difficult to make a detailed report.

The greatest complaint still received by communities was the number of nets they received. Even though the team explain the logic of how the allocation of nets is calculated, some families were expecting one net per person, others expected it to be based on a fixed allocation based on the number of people in the family, and yet others thought they would be given nets based on the number of nets they stated they already had. This highlights that a better system of explaining the allocation system needs to be developed. In general, unlike some previous districts covered by RAM, DHTs of East Sepik assisted in the allocation of the nets which meant they were in a better position to explain the distribution system on the ground. Nevertheless, despite all the difficulties involved, it would appear that the vast majority of community members accepted the outcome and there were no real problems encountered.



Fig.10 – Distributions In Bunam

Acknowledgements

On behalf of the Rotarians Against Malaria household distribution team who worked in Wewak, Maprik, Yanguru Saussia and Angoram Districts, we would like to sincerely acknowledge and thank the East Sepik Provincial Health Authority and all District Health Staff of the four districts for the excellent help and cooperation during the LLIN distribution programme.

In particular, we would like to thank at provincial level, Mr Albert Bunat (Former Provincial Health Advisor), Mr Brown Kum (Acting Director of Public Health), Mr Mark Mauludu (Chief Executive Officer), Mr Conrad Kambi (Provincial Disease Control Officer), Ms Appolonia Parihuasi (Provincial Malaria Officer), Mr Able Sumbuk (Provincial Health Promotion Officer), Mr John Mark (Provincial Admin Officer) and Mr Daniel Balingi (Health Inspector).

For the district staff, we would like to thank all those who tirelessly took part in the programme, but in particular we would like to mention the following people who were instrumental in the planning and implementation of the programme namely:

Wewak District

Name	Occupation/Position Title	Institution
Ms Winnie Sagi	Environment Officer	Wewak LLG
Mr Allan Boyep	CHW	Koil Health Centre
Mr Melchior Wureng	Officer in Charge	Kairuru Health Centre
Mr Kelvin Jack	Officer In Charge	Passam Health Centre
Sr Philomina Mungu	Officer In Charge	Dagua Health Centre
Mr Hendry Takombo	Provincial Technical Officer	Wewak Urban Clinic
Sr Theresia Mugowen	Officer In Charge	Boiken Health Centre

Maprik district

Name	Occupation	Institution
Mr Raymond Pohonoum	District Health Manager	East Sepik Provincial Health
Mrs Josephine Bangi	Officer In charge	Albinama Health Centre
Mr Daniel Palaos	Officer In charge	Brugam Health Centre
Mr Matthew Wahabel	Officer In charge	Ihalita Health Centre
Mrs Matilda Isio	a/Officer In Charge	Kombikum Health Centre
Mr Peter Maku	Officer In charge	Roma Health Centre
Mr Eddie Yehrewani	Officer In charge	Ulupu Health Centre

Yanguru Saussia district

Name	Occupation	Institution
Mrs Glennis Wopmi	District Health Manager	East Sepik Provincial Health
Mr Anton Maniwo	Officer In charge	Yanguru Health Centre
Sr Miriam	Officer In charge	Sassoya Health Centre
Sr Zita	Officer In charge	Marinumbo Health Centre
Sr Margaret Sause	a/Officer In charge	Nasimingel Health Centre

Angoram district

Name	Occupation	Institution
Mr Godfrey Karum	District Health Manager	East Sepik Provincial Health
Mr Jeffery Kandu	Officer In charge	Angoram Health Centre
Mr Micheal	Officer In charge	Timbunke Health Centre
Mrs Brunhilda Tamara	Officer In charge	Kambot Health Centree
Mr Rapheal Banga	Officer In charge	Kambuku Health Centre
Mr Matthew Akimin	Officer In charge	Brunam Health Centre
Mrs Lynette Nawak	Officer In charge	Marienbergl Health Centre
Mrs Marianne Okim	Officer In charge	Jangit Health Centre
Mr Monford Mambare	Officer In charge	Biwat Health Centre

RAM would like to acknowledge the support received from service providers like Puma Energy for supplying fuel for the operation, Hertz rent a car, Fly Hire cars and Riverest Hire cars for providing transport and sincere appreciation to the church run facilities under, Catholic, Seventh Day Adventist (SDA) and the South Sea Evangelical Health Services for allowing their staff to work with the RAM team.

Last but not the least, RAM would also like to extend our acknowledgement and appreciation to all the hard-working volunteers who also played a very important role in ensuring the distribution progressed well without any interferences from the general public.

Appendix One – History Of LLIN Distribution In PNG

The use of Insecticide Treated Nets (ITNs) started in PNG in 1985. The PNG Institute of Medical Research (IMR) conducted one of the first trials demonstrating the health impact of treating mosquito nets with insecticide. The study, done near East Sepik, showed a reduction of *P.falciparum* incidence and prevalence in children below five years of age sleeping under permethrin-treated nets. The protective effect of insecticide-treated nets (ITNs) was also confirmed in many other trials around the world. As a consequence of such findings, the national malaria control program in PNG started emphasizing the use of ITNs in 1989. However, no regular or large-scale distribution of ITNs was carried out at that time.

In the following years, coverage with mosquito nets and other control interventions remained patchy and low in many parts of PNG. It was during this period that Rotarians Against Malaria (RAM) was created from the Port Moresby Rotary Club in 1997. Using a donation of 150,000 treated nets given to them from the National Department of Health (originally from AusAid), RAM successfully ran a revolving fund of nets in which nets were sold at a price which allowed the proceeds to buy more nets. This they did successfully for many years distributing about 45,000 treated nets a year from 2000 to 2004.

Prior to 2004, most treated nets had to be re-treated every six months or a year which requires a lot of work and organisation. In early 2004 everything changed with the introduction of Long Lasting Insecticidal Nets (LLINs) which would last for 20 heavy duty washes and effectively no longer required to be treated again. This change in nets also coincided with the introduction of the Global Fund into PNG known as the Global Fund Round 3.

From 2005 to 2009 the malaria programme in PNG received and delivered about 2.3 million nets throughout the country at a rate of one net for every 2.5 people. The delivery of nets to village level was under the provincial health authorities and reached most parts of the country with Rotarians Against Malaria (RAM) being responsible in delivering the containers of nets to the provinces from Port Moresby and Lae where the nets arrived from overseas suppliers.

While the programme was very successful in some areas while it was not so successful in others. Problems included slow release of funds from central to provincial level, some provinces not following laid out technical guidelines resulting in some areas not been covered, and technical and financial reporting leaving a lot to be desired in many of the provinces. When further funds became available from the Global Fund Round Eight, it was decided that Rotarians Against Malaria (RAM) would take over the coordination of the LLIN distribution programme in PNG.

This change has resulted in RAM being responsible for the overall coordination of the LLIN distribution in the country particularly in the areas of quantification, procurement, and delivery and reporting. However, the actual delivery of nets to village level is a collaboration between RAM, provincial health authorities and district health and health centre staff.

Fig.1 shows the distribution of nets to districts and provinces from 2006 to 2009 while Fig.2 shows the distribution of nets from 2010 to 2014 and Fig.3 shows the distribution from 2015 to 2017 which includes under five distributions in 2016 and 2017. Due to lack of funds Under Five distributions had been carried out only in areas above 1600m and in Port Moresby and Lae. This situation changed when support from Against Malaria Foundation was received.

Up until June 2017, a total of 8,223, 853 LLINs had been distributed under the coordination of RAM. Therefore, with the 2.5 million nets distributed from 2006 to 2009, this means that about 10.5 million nets have been delivered to household level in PNG since 2006. This is more than one net per every person in PNG. RAM has also distributed about another 1.2 million nets to health centres for distribution to pregnant women and for prisons and boarding schools.

It should also be noted that alongside developments related to treated mosquito nets, the first cases of chloroquine-resistant malaria were reported in 1976 (20). This progressed rapidly to widespread resistance of *P.falciparum*, and to a slightly lesser extent *P.vivax*, to chloroquine, amodiaquine and sulphadoxine-pyrimethamine (SP). In studies conducted between 2003 and 2005, even combination regimens of these drugs faced up to 29% resistance of *P. falciparum*². This situation together with Global Fund Round 8 also saw the introduction of artemether lumfantrine branded as Malawan and IPT (Intermittent Preventative Treatment) for antenatal women.

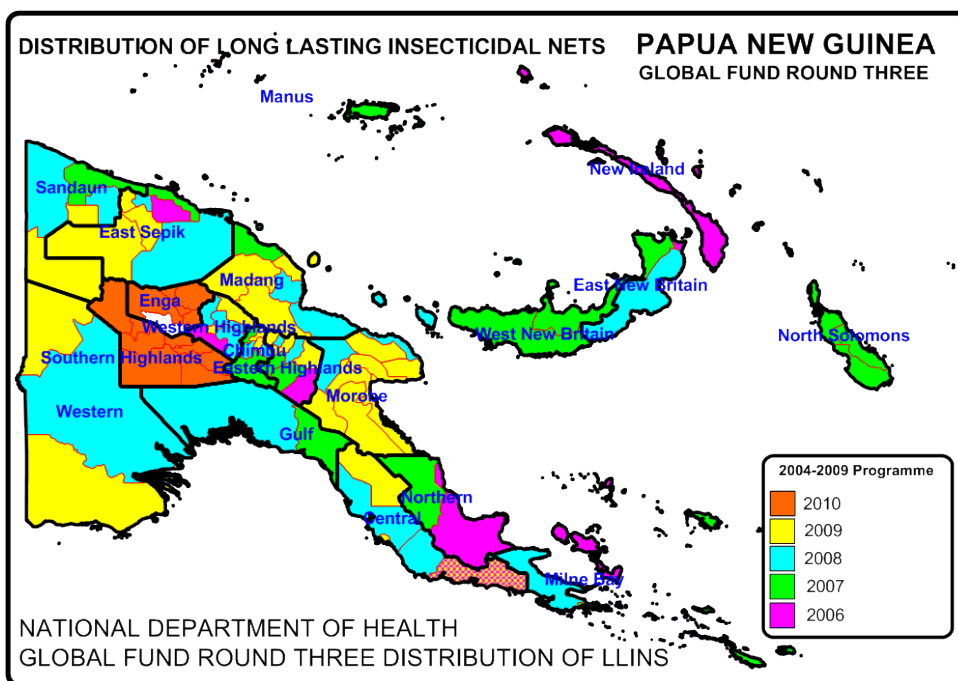


Fig. 1 Distribution Of Nets Under National Department Of Health From 2006 To 2010

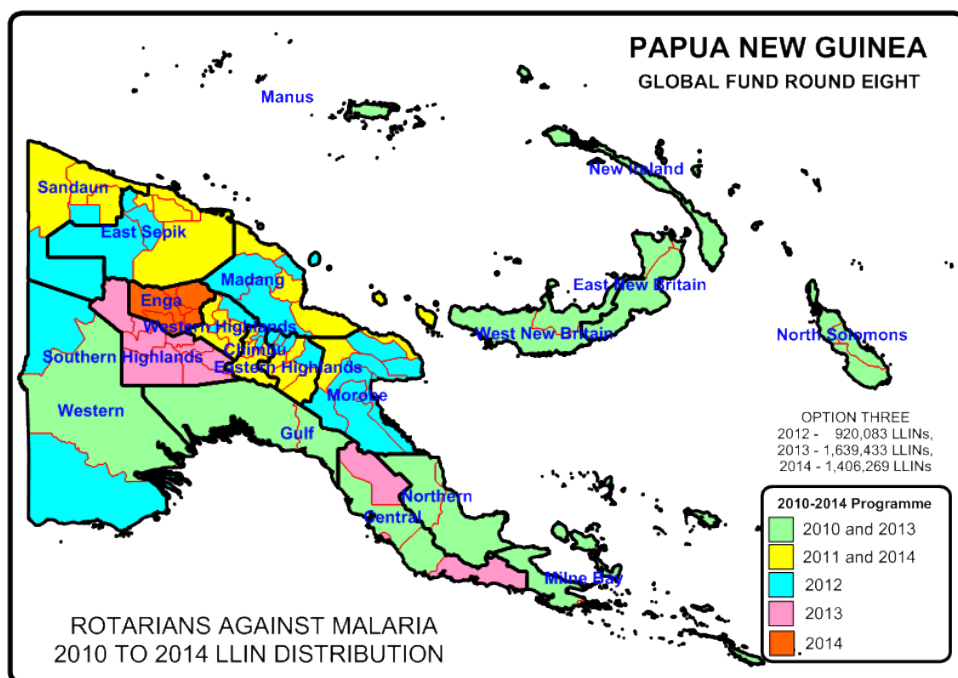


Fig.2 Distribution of LLIN Programme 2010 to 2014

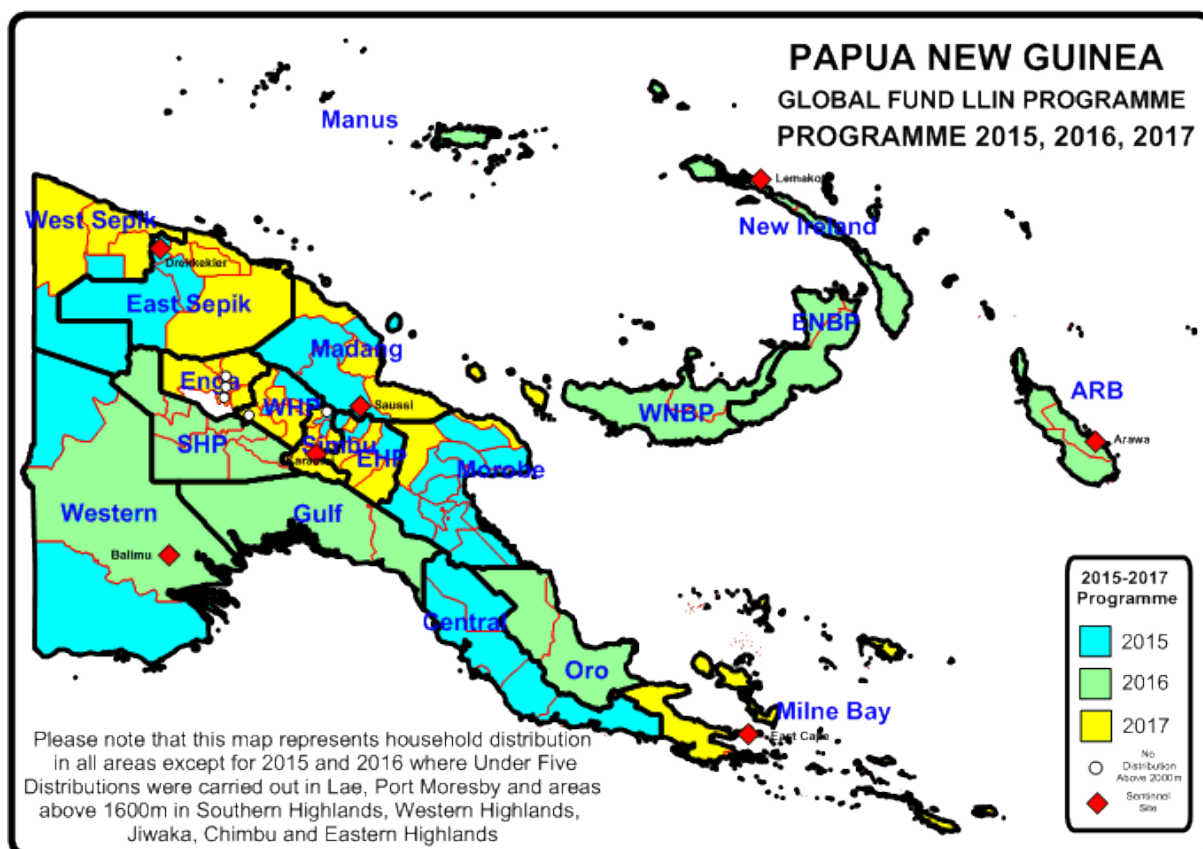


Fig.3 LLIN Distribution Programme 2015 to 2017

TABLE ONE - LLINs Delivered In PNG Under Coordination Of RAM From 2010

Period	Dates	Districts	Provinces	Nets Delivered
Phase One (2010-2011)	Nov 09 - Oct 11	50 Districts	18 Provinces	1,890,448
Year 3 (2012)	Nov 11 - Sep 12	27 Districts	10 Provinces	832,671
Year 4 (2013)	Oct 12 - Sep 13	28 Districts	12 Provinces	1,210,391
Year 5 (2014)	Oct 13 - Sep 14	23 Districts	11 Provinces	1,374,791
Year 5 (2014) No Cost Extension	Oct 14 - Dec 14	Okapa, Lufa, Madang, Angoram, Maprik, Yangoru Saussi, Wewak, Aitape Lumi, Nuku and Vanimo Green	EHP, Madang, East Sepik and Sandaun	454,806
Year 6 (2015)		29 Districts	11 Provinces	932,822
Year 7 (2016)		27 Districts	13 Provinces	805,597
Year 8 (2017)	Jan - Mar 2017	Kokopo, Rabaul, Gazelle, Kimbe, Alotau, Samarai Nurua, Esa'ala, Kiriwina Goodenough	East New Britain, West New Britain, Milne Bay	335,330
	Apr - Jun 2017	Kompiani, Wabag, Wapenamanda, Lagaip Porgera, Tambul Nebliya, Mul Bayer, Dei, Anglimp South Waghi and North Waghi	Enga, Western Highlands and Jiwaka	396,997
	Jul - Sep 2017	Chuave, Kerowagi, Karumui, Goroka, Okapa, Lufa, Henganofi and Obura Wonenara	Chimbu and Eastern Highlands	298,983
New Funding Model				2,769,729
Round Eight				5,763,107
Overall Total Phase One and Phase Two And NFM				8,532,836

Appendix Two – Malaria In East Sepik Compared With Other Provinces

- Fig.1 shows the decrease of malaria from 2007 to 2015 in all provinces, Fig. 2 shows the actual malaria incidence in East Sepik compared with other provinces and Fig.3 shows annual malaria trends from 2012 to 2016. In East Sepik, it can be seen from Fig.1 that malaria decreased from 2007 to 2015 by 67% which is a similar reduction to other northern coastal areas of PNG. This is also reflected in Fig.2 which shows that the incidence of malaria in East Sepik is 108 per 1000 people which is similar to its coastal neighbour Madang but much lower than Sandaun. Fig. 3 shows that the trend of incidence of malaria in East Sepik since 2012 as compared with other provinces while Fig.4 shows the malaria incidence reported since 2000 against LLIN distributions. Both Fig.3 and Fig.4 show that malaria has generally reduced following LLIN distribution but there was a sharp rise of malaria in 2014 after which malaria started to reduce again following the distribution in 2015.

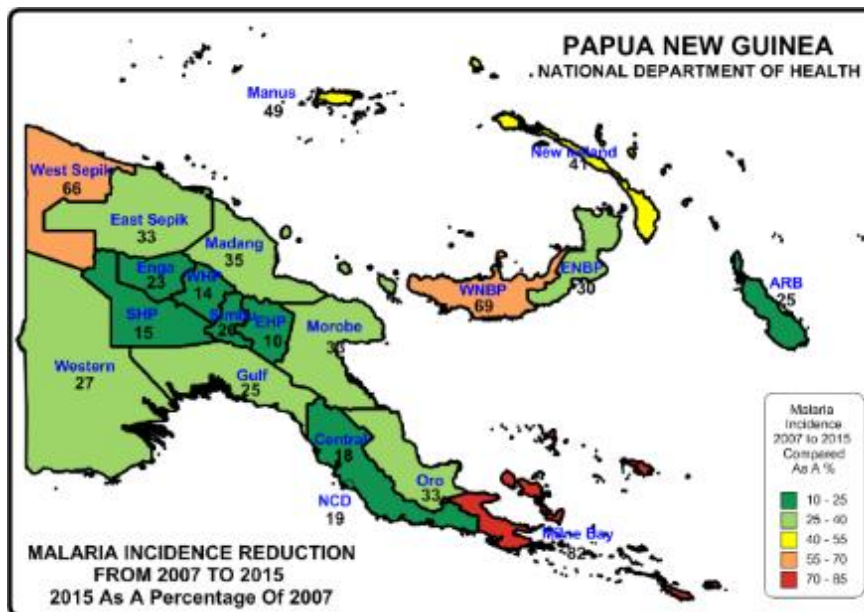


Fig.1 – Relative Reduction Of Malaria In Provinces Of PNG

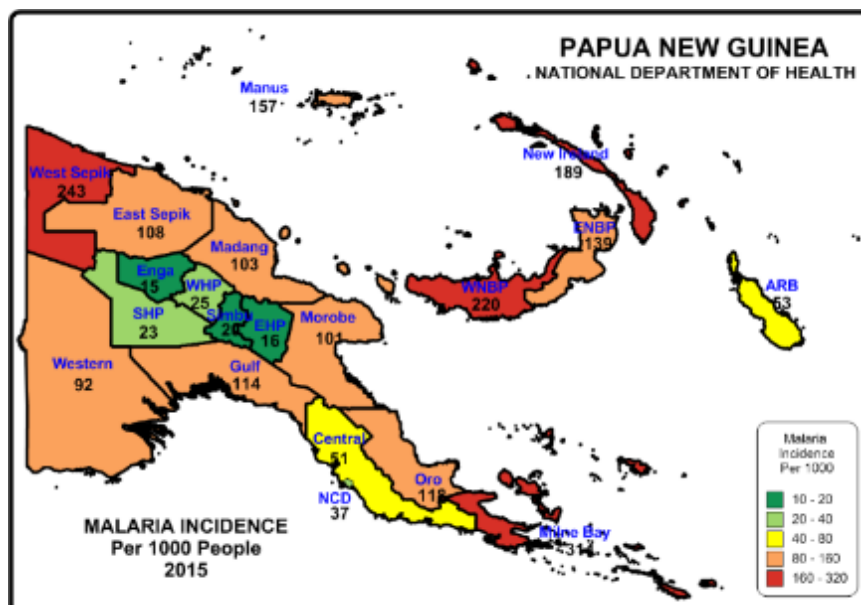


Fig.2 – Reported Malaria Incidence In 2015

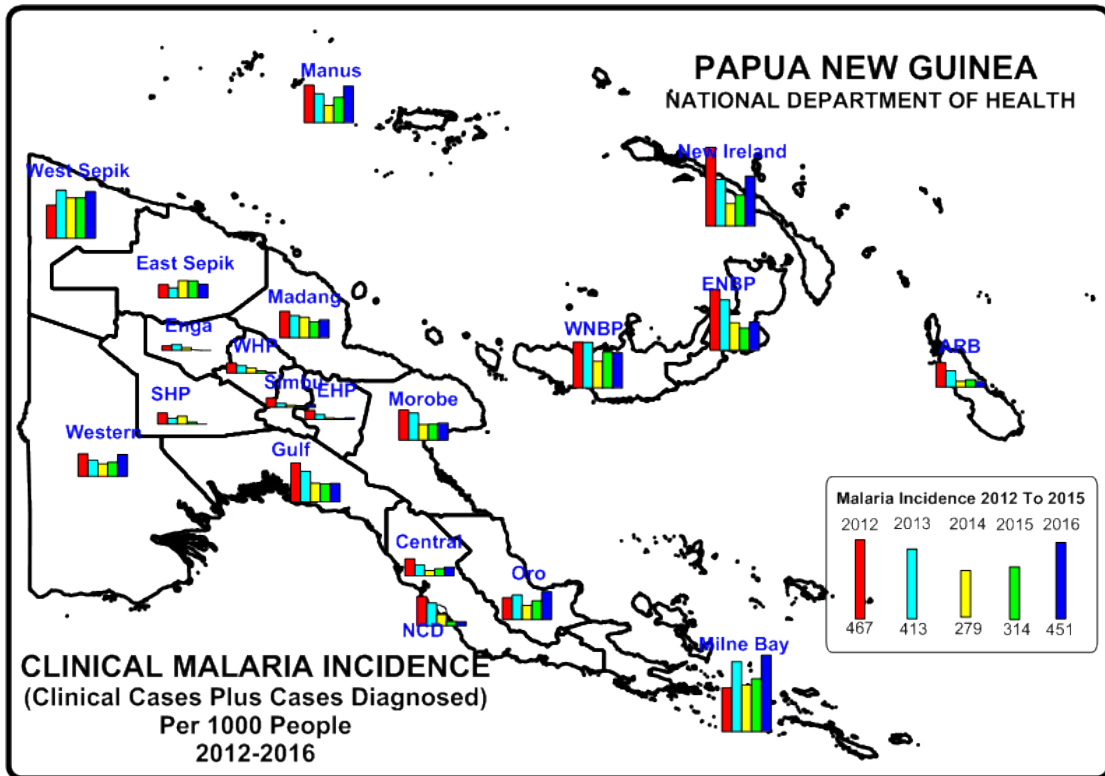


Fig. 3 - Reported Malaria Incidence In PNG From 2012 To 2016

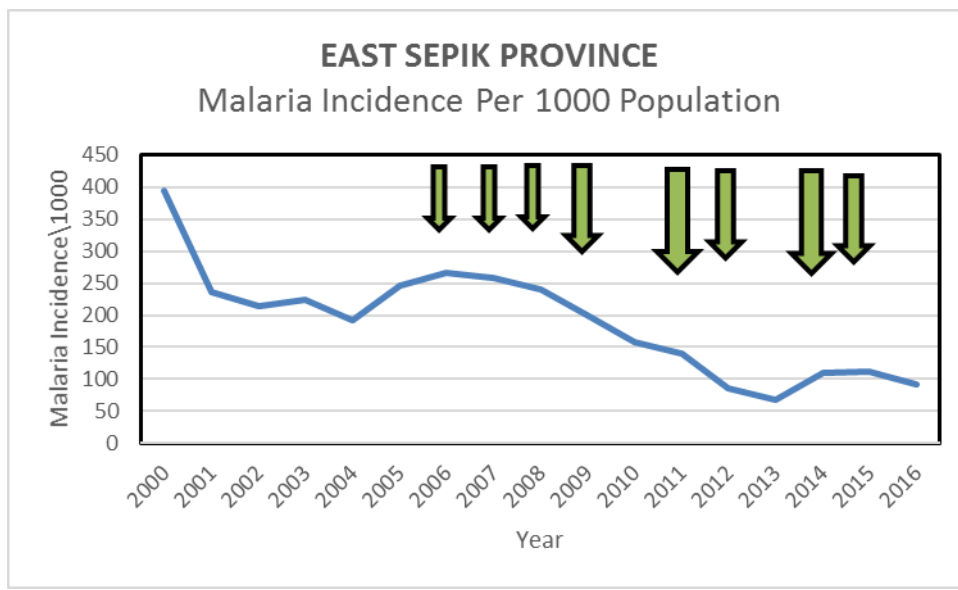


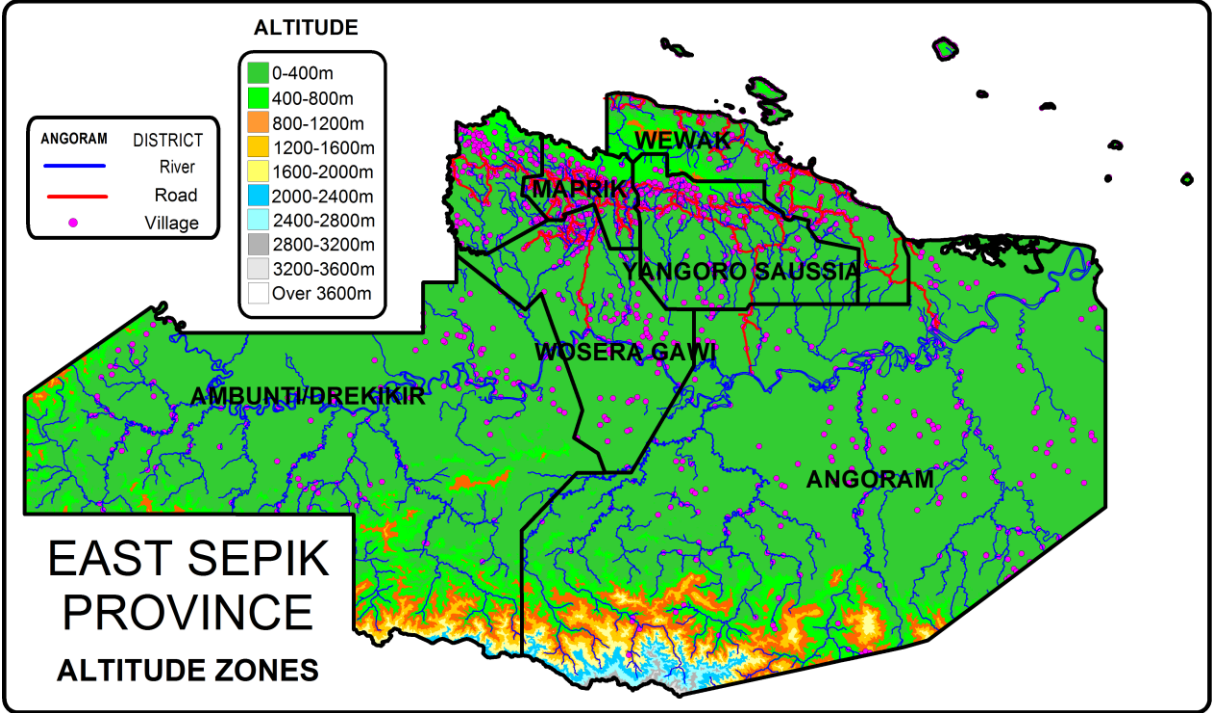
Fig. 4 – Malaria Incidence Versus Distribution Of Nets

(Green Arrows represent years of Household Distribution – Small Arrows show distributions in Yangoru Saussi in 2006, Wewak in 2007, Angoran 2008 and Ambunti Drekkier and Woser Gawi in 2009, 2012 and 2015. Large arrows show distributions in Angoram, Maprik, Wewak and Yangoru Saussi in 2011 and 2014).

Appendix Three - Malaria By Altitude

From Fig. 1 and data bases of village populations, it can also be calculated that about 95% of the population live below 400m and 99.8% of the population of East Sepik live below 1200m altitude where malaria can be considered highly endemic and stable. A further 0.2% in the zone between 1200-1600m which is considered malaria epidemic in nature. From the map below, it can be seen that the only people living at high altitude are those living in the mountains on the border with Enga Province.

Fig.1 - Altitude Zones Of And East Sepik Province



Appendix Four – Other Photographs



Distribution In Jangit (Left) and Trekking In Kaningara (Right)



Canoes taking staff and nets to Bunam (Left) And Dinghy In Unloading Boat in Jangit (Right)



Difficulty With Navigating River Channels

OTHER PICTURES



Happy Customers In Bunam (Left) And Jangit (Right)

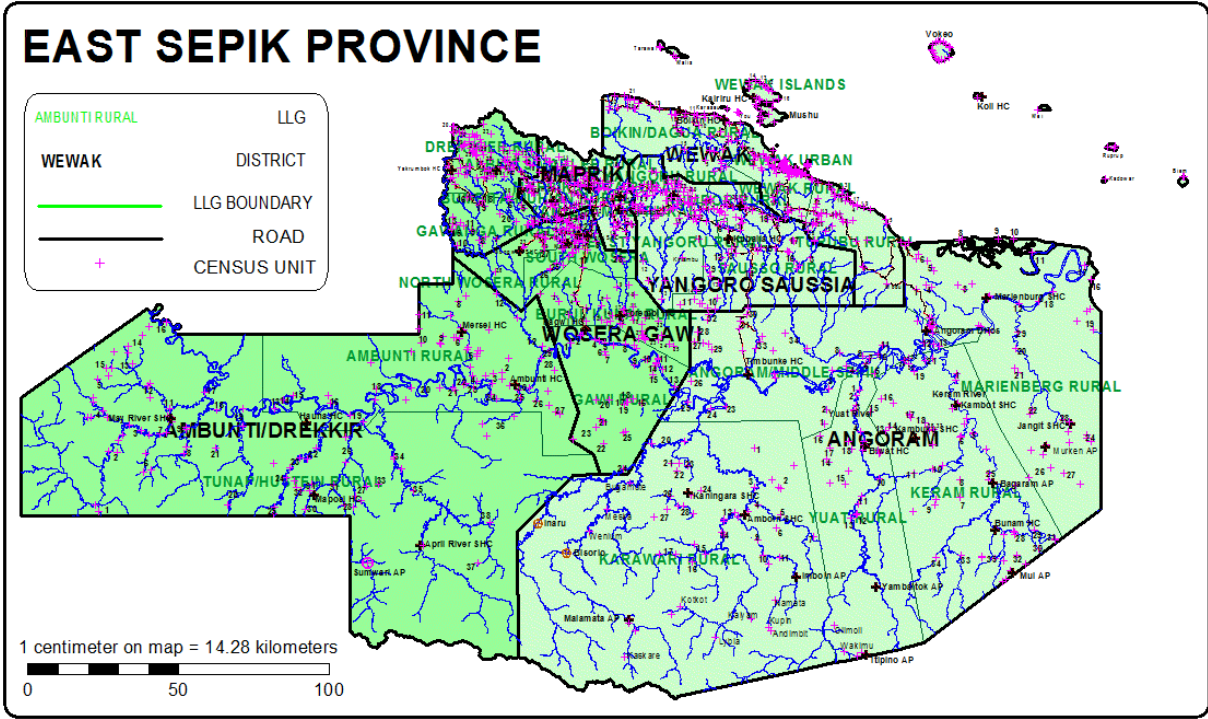


More Happy Customers In Jangit



Happy Customers In Kaningara

Appendix Five - Map Of East Sepik Showing Census Points Of 2000 Census



ANNEX ONE

**EAST SEPIK PROVINCE
ANGORAM DISTRICT POPULATION 2017
LLIN REPORT SUMMARY SHEET**

LLG	WARD	VILLAGE	Estimated 2017 Data Based On 2000 Census	Estimated 2017 Data Based On 2014 Data	Health Centre	Population Surveyed	House Holds Surveyed	Nets Issued	Date Of Distribution	Village	Digicel	Bmobile	Citifon	Houses With Radios	Radio Networks	Comment
ANGORAM			132,214	132,214		133,238	21,830	64,921						3,590	231	
ANGORAM MIDDLE SEPIK			36,286	35,831		37,551	6,170	17,932		56	41	13	0	1,388	33	
1	CHANGRIWA		1,322	1,383		1,332	241	668		1	0	0	0	81		
		Changriwa	1,322	1,383	Timbunke HC	1,332	241	668	18.02.18	1	0	0	0	81	East Sepik N	Boat
2	MARAMBA		1,607	1,426		1,353	319	675		1	0	0	0	40		
		Maramba	1,607	1,426	Timbunke HC	1,353	319	675	19.02.18	1	0	0	0	40	East Sepik N	Boat
3	KANDUANAM		1,119	1,146		1,306	227	603		2	2	0	0	66		
		Kanduanum 1	494	569	Timbunke HC	525	77	233	25.02.18	1	1	0	0	19	East Sepik N	Boat
		Kanduanum 2	625	577	Timbunke HC	781	150	370	25.02.18	1	1	0	0	47	East Sepik N	Boat
4	KRINJAMBIN		521	612		694	85	337		1	1	0	0	45		
		Krinjambin	521	612	Timbunke HC	694	85	337	25.02.18	1	1	0	0	45	East Sepik N	Boat
5	TAMBARI		663	747		710	111	325		1	0	0	0	0		
		Tambari	663	747	Angoram Hos	710	111	325	27.02.18	1	0	0	0	0		Boat
6	AGRUMARA		653	643		502	100	254		1	0	0	0	0		
		Agrumara	653	643	Angoram Hos	502	100	254	27.02.18	1	0	0	0	0		Boat
7	YUARMA		484	531		677	94	322		1	0	0	0	0		
		Yuarma	484	531	Angoram Hos	677	94	322	27.02.18	1	0	0	0	0		Boat
8	MUNDUMUNDO		1,497	1,436		1,594	283	732		1	1	0	0	227		
		Mundumundo	1,497	1,436	Timbunke HC	1,594	283	732	21.02.18	1	1	0	0	227	East Sepik N	Boat
9	KAMBRINDO		842	840		951	129	446		1	0	0	0	0		
		Kambrindo	842	840	Angoram Hos	951	129	446	27.02.18	1	0	0	0	0		Boat
10	MOIM		1,695	1,596		1,387	197	676		1	0	0	0	0		
		Moim	1,695	1,596	Angoram Hos	1,387	197	676	26.02.18	1	0	0	0	0		Boat
11	PINANG		1,019	884		1,090	150	521		1	0	0	0	0		
		Pinang	1,019	884	Angoram Hos	1,090	150	521	26.02.18	1	0	0	0	0		Boat
12	MAGENDO 1		855	695		801	100	374		2	0	0	0	0		
		Magendo 1	463	695	Angoram Hos	385	50	180	26.02.18	1	0	0	0	0		Boat
		Magendo 2	392	0	Angoram Hos	416	50	194	26.02.18	1	0	0	0	0		Boat
13	MAGENDO 2		544	633		669	117	330		1	0	0	0	0		
		Magendo 3/4	544	633	Angoram Hos	669	117	330	26.02.18	1	0	0	0	0		Boat
14	EX SERVICE CAMP		1,543	1,400		1,328	214	628		2	2	2	0	0		
		Ex Service Camp	630	430	Angoram Hos	361	55	168	24.02.18	1	1	1	0	0		Boat
		Langa Sait Sett	913	970	Angoram Hos	967	159	460	25.02.18	1	1	1	0	0		Boat
15	ANGORAM VILAGE		1,022	1,258		1,322	168	612		2	2	2	0	0		
		Angoram Village	575	601	Angoram Hos	695	83	309	25.02.18	1	1	1	0	0		Road
		Kambrok	448	657	Angoram Hos	627	85	303	24.02.18	1	1	1	0	0		Road
16	GAVIAN RESETT 1		1,758	1,953		1,905	288	886		1	1	1	0	0		
		Division One	1,758	1,953	Angoram Hos	1,905	288	886	21.02.18	1	1	1	0	0		Road
17	GAVIAN RESETT 2		1,149	1,406		1,294	207	591		1	1	1	0	0		
		Division Two	1,149	1,406	Angoram Hos	1,294	207	591	21.02.18	1	1	1	0	0		Road
18	GAVIAN RESETT 3		972	922		968	150	456		1	1	1	0	0		
		Division Three	972	922	Angoram Hos	968	150	456	23.02.18	1	1	1	0	0		Road
19	GAVIAN RESETT 4		669	931		1,074	186	514		1	1	1	0	0		
		Division 4	669	931	Angoram Hos	1,074	186	514	23.02.18	1	1	1	0	0		Road
20	TAMBUNUM		1,697	2,098		2,146	339	1,018		1	1	0	0	63		
		Tambunum	1,697	2,098	Timbunke HC	2,146	339	1,018	20.02.18	1	1	0	0	63	East Sepik N	Boat
21	WOMBUN		738	610		602	119	281		1	1	0	0	15		
		Wombun	738	610	Timbunke HC	602	119	281	20.02.18	1	1	0	0	15	East Sepik N	Boat
22	TIMBUNKI		2,239	1,814		1,805	324	850		1	1	0	0	201		
		Timbunke	2,239	1,814	Timbunke HC	1,805	324	850	24.02.18	1	1	0	0	201	East Sepik N	Boat
23	ANGRIMAN		527	475		434	79	205		1	1	0	0	34		
		Angriman	527	475	Timbunke HC	434	79	205	21.02.18	1	1	0	0	34	East Sepik N	Boat
24	MINDIMBIT		767	720		671	133	323		1	1	0	0	40		
		Mindimbit	767	720	Timbunke HC	671	133	323	21.02.18	1	1	0	0	40	East Sepik N	Boat
25	KAMINIMBIT		857	751		698	145	339		1	1	0	0	48		
		Kaminimbit	857	751	Timbunke HC	698	145	339	21.02.18	1	1	0	0	48	East Sepik N	Boat
26	KARARAU		730	638		601	129	329		1	1	0	0	27		
		Kararau	730	638	Timbunke HC	601	129	329	22.02.18	1	1	0	0	27	East Sepik N	Boat
27	TIMBOLI		594	590		566	109	294		2	2	0	0	69		
		Timboli	367	376	Timbunke HC	374	75	196	21.02.18	1	1	0	0	45	East Sepik N	Boat
		Mangjambut	227	214	Timbunke HC	192	34	98	21.02.18	1	1	0	0	24	East Sepik N	Boat
28	NINDIKUM		500	367		352	50	164		1	1	0	0	16		
		Nindikum	500	367	Timbunke HC	352	50	164	21.02.18	1	1	0	0	16	East Sepik N	Boat
29	CHIKINUMBU		440	420		329	68	159		2	2	0	0	7		
		Chikinumbu	244	290	Timbunke HC	217	42	107	21.02.18	1	1	0	0	4	East Sepik N	Road
		Marimbo	196	130	Timbunke HC	112	26	52	21.02.18	1	1	0	0	3	East Sepik N	Road
30	CHIMBIAN		719	681		622	98	305		2	2	0	0	19		
		Chimbian	382	344	Timbunke HC	335	48	158	23.02.18	1	1	0	0		East Sepik N	Road
		Warikum	336	337	Timbunke HC	287	50	147	23.02.18	1	1	0	0	19	East Sepik N	Road
31	SAUI		578	483		535	104	264		3	3	0	0	27		
		Sauai	86	56	Timbunke HC	88	18	44	23.02.18	1	1	0	0	8	East Sepik N	Road
		Suimbo	286	275	Timbunke HC	216	36	103	24.02.18	1	1	0	0	8	East Sepik N	Road
		Namuk	206	151	Timbunke HC	231	50	117	23.02.18	1	1	0	0	11	East Sepik N	Road
32	KINGAUI		317	271		419	82	208		3	0	0	0	12		
		Kingauai	217	185	Timbunke HC	169	38	89	21.02.18	1	0	0	0	7	East Sepik N	Road
		Simange	100	86	Timbunke HC	101	18	45	21.02.18	1	0	0	0	2	East Sepik N	Road
		Juwiniambu		NEW	Timbunke HC	149	26	74	21.02.18	1	0	0	0	3	East Sepik NBC	
33	KOIWUT		1,193	1,768		2,561	333	1,175		5	5	0	0	219		
		Kamangauai	346	404	Timbunke HC	419	79	211	21.02.18	1	1	0	0	36	East Sepik N	Road
		Koiwut	277	323	Timbunke HC	423	50	183	21.02.18	1	1	0	0	20	East Sepik N	Road
		Korep	284	517	Timbunke HC	1,015	107	451	21.02.18	1	1	0	0	80	East Sepik N	Road
		Wenio	113	151	Timbunke HC	297	47	143	21.02.18	1	1	0	0	33	East Sepik N	Road
		Mara	173	373	Timbunke HC	407	50	187	21.02.18	1	1	0	0	50	East Sepik N	Road
34	PAIMBIT		475	792		1,020	166	455		2	2	0	0	132		
		Paimbit	321	419	Timbunke HC	529	87	240	21.02.18	1	1	0	0	57	East Sepik N	Road

LLG	WARD	VILLAGE	Estimated 2017 Data Based On 2000 Census	Estimated 2017 Data Based On 2014 Data	Health Centre	Population Surveyed	House Holds Surveyed	Nets Issued	Date Of Distribution	Village	Digicel	Bmobile	Citifon	Houses With Radios	Radio Networks	Comment
		Angartom	761	273	Angoram Hos					1						Road
		Angoram Daka Compound / Yar Point	NEW	419	Angoram Hos	1,280	206	673	24.02.18	1	1	1	0	0		Road
		Kunai		NEW	Angoram Hos	384	65	180	24.02.18	1	1	1	0	0		
KWARAWARI RURAL			19,088	17,951		17,965	2,623	8,805		56	42	0	0	401	57	
1	MASADANAI		227	255		198	36	96		1	0	0	0	16		
		Masadana	227	255	Amboin SHC	198	36	96		1	0	0	0	16	R. ESP	Boat
2	KAIWARIA		1,295	1,351		1,434	227	701		4	4	0	0	0		
		Kaiwaria	475	461	Amboin SHC	450	74	220	25.02.18	1	1	0	0	0	C. R. ESP.	Boat
		Kungriabun	452	549	Amboin SHC	617	96	300	25.02.18	1	1	0	0	0	C. R. ESP.	Boat
		Maikrobi	315	305	Amboin SHC	299	44	148	25.02.18	1	1	0	0	0	C. R. ESP.	Boat
		Kasiet	54	35	Amboin SHC	68	13	33	25.02.18	1	1	0	0	0	C. R. ESP.	Boat
3	MANJAMAI		359	453		458	50	229		1	1	0	0	0		
		Manjamai	359	453	Amboin SHC	458	50	229	22.02.18	1	1	0	0	0	ESP/ FM	Boat
4	KONMEI		523	451		503	50	244		1	1	0	0	0		
		Konmei	523	451	Amboin SHC	503	50	244	22.02.18	1	1	0	0	0	ESP/ FM	Boat
5	AMBONWARI		974	751		927	81	449		1	1	0	0	0		
		Abonwari	974	751	Amboin SHC	927	81	449	22.02.18	1	1	0	0	0	C. R. ESP.	Boat
6	IMANMERI		1,257	1,082		995	69	487		1	0	0	0	16		
		Imanmeri	1,257	1,082	Amboin SHC	995	69	487	22.02.18	1	0	0	0	16	ESP / FM.	Boat
7	KANJIMEI		386	407		431	50	207		1	1	0	0	19		
		Kanjime	386	407	Amboin SHC	431	50	207	22.02.18	1	1	0	0	19	C. R. ESP.	Boat
8	KUNDIMAN		921	731		848	116	422		2	2	0	0	36		
		Kundiman	676	583	Amboin SHC	720	96	360	23.02.18	1	1	0	0	29	ESP/ FM	Boat
		Amboin Stn	244	148	Amboin SHC	128	20	62	23.02.18	1	1	0	0	7	ESP/FM	Boat
9	YIMAS		675	693		660	101	327		2	2	0	0	17		
		Yimas 1	242	227	Amboin SHC	230	37	115	22.02.18	1	1	0	0	0	ESP / FM.	Boat
		Yimas 2	432	467	Amboin SHC	430	64	212	24.02.18	1	1	0	0	17	ESP/ FM	Boat
10	AWIM		400	429		389	47	191		2	1	0	0	1		
		Awim	273	304	Amboin SHC	276	31	134	21.02.18	1	1	0	0	1	ESP/ FM	Boat
		Wambrumas	127	125	Amboin SHC	113	16	57	21.02.18	1	0	0	0	0	ESP/ FM.	Boat
11	YAMANDIM		217	392		419	55	206		1	1	0	0	0		
		Yamandim	217	392	Amboin SHC	419	55	206	21.02.18	1	1	0	0	0	0	
12	IMBOIN		744	692		499	108	274		6	0	0	0	0		
		Andimbit	98	85	Imboin AP	66	14	36	03.03.18	1	0	0	0	0	C Wewak.	Boat/2 Day Trek
		Namata	181	156	Imboin AP	109	25	59	04.03.18	1	0	0	0	0	C Wewak.	Boat/1 Day Trek
		Imboin	177	179	Imboin AP	171	27	82	05.03.18	1	0	0	0	0	C Wewak.	Boat
		Kupin	196	154	Imboin AP	66	14	33	06.03.18	1	0	0	0	0	C Wewak.	Boat/2 Day Trek
		Kaiyam	92	118	Imboin AP	27	14	36	07.03.18	1	0	0	0	0	C Wewak.	Boat/2 Day Trek
		Meakambut		NEW	Imboin AP	60	14	28	03.03.18	1	0	0	0	0	NBC, FM	Boat/ 1day Trek
13	AMONGABI		1,230	1,265		858	136	447		2	2	0	0	0		
		Ambongabi	1,040	1,059	Imboin AP	727	109	385	04.03.18	1	1	0	0	0	C Wewak.	Boat
		Tangambit	190	206	Imboin AP	131	27	62	04.03.18	1	1	0	0	0	C Wewak.	Boat
14	CHIMBUT		742	794		890	142	429		3	3	0	0	8		
		Chimbut	407	427	Imboin AP	403	62	193	04.03.18	1	1	0	0	7	C Wewak.	Boat
		Maramba	169	208	Imboin AP	280	48	128	04.03.18	1	1	0	0	1	C Wewak.	Boat
		Marouk	165	159	Imboin AP	207	32	108	04.03.18	1	1	0	0	0	C Wewak.	Boat
15	SIKAIUN		432	373		430	76	213		2	0	0	0	7		
		Barapisim	173	252	Imboin AP	163	30	86	04.03.18	1	0	0	0	3	C Wewak.	Boat
		Sikauin	259	121	Imboin AP	267	46	127	04.03.18	1	0	0	0	4	C Wewak.	Boat
16	YANITABAK		215	258		115	23	55		1	0	0	0	0		
		Yanitabak	215	258	Imboin AP	115	23	55	04.03.18	1	0	0	0	0	C Wewak.	Boat
17	LATOMA		315	210		345	61	158		2	0	0	0	2		
		Danig	71	0	Imboin AP	132	24	52	04.03.18	1	0	0	0	0	C Wewak.	Boat
		Latoma	244	210	Imboin AP	213	37	106	04.03.18	1	0	0	0	2	C Wewak.	Boat
18	MALAMATA		774	0												
		Malamata	248	0	ENGA											Air/Trek
		London	108	0	ENGA											Air/Trek
		Kaskare	363	0	ENGA											Air/Trek
		Sagare	56	0	ENGA											Air/Trek
19	KOTKOT		311	0												
		Kotkot	148	0	ENGA											Trek
		Iniai	104	0	ENGA											Trek
		Lybia	60	0	ENGA											Trek
20	MAMARI		436	356		394	65	192		2	2	0	0	19		
		Mamari	329	276	Kaningara SHC	283	45	138	14.02.18	1	1	0	0	13	FM, NBC	Boat
		Baliwei	108	80	Kaningara SHC	111	20	54	14.02.18	1	1	0	0	6	FM, NBC	Boat
21	SANGRIMAN		719	691		594	97	291		1	1	0	0	2		
		Sangriman	719	691	Kaningara SHC	594	97	291	13.02.18	1	1	0	0	2	FM, NBC	Boat
22	TUNGIMBIT		534	419		371	68	188		2	2	0	0	53		
		Tungimbit	283	189	Kaningara SHC	184	33	90	13.02.18	1	1	0	0	26	FM, NBC	Boat
		Yasimbit	252	230	Kaningara SHC	187	35	98	13.02.18	1	1	0	0	27	FM, NBC	Boat
23	KAMBRAMAN		392	226		379	56	187		1	1	0	0	0		
		Kambraman	392	226	Kaningara SHC	379	56	187	12.02.18	1	1	0	0	0	FM, NBC	Boat
24	KRAIMBIT		794	699		692	94	323		1	1	0	0	8		
		Kraimbit	794	699	Kaningara SHC	692	94	323	12.02.18	1	1	0	0	8	FM, NBC	Boat
25	KANINGARA		1,136	998		1,028	172	499		3	3	0	0	28		
		Kaningara	753	594	Kaningara SHC	552	88	270	13.02.18	1	1	0	0	20	NBC, FM	Boat
		Yamondanai	382	405	Kaningara SHC	361	63	174	13.02.18	1	1	0	0	6	NBC, FM	Boat
		Napman		NEW	Kaningara SHC	115	21	55	13.02.18	1	1	0	0	2	NBC, FM	
26	GOVERNMAS		582	662		743	96	330	0	1	1	0	0	2		
		Governmas	582	662	Kaningara SHC	743	96	330	13.02.18	1	1	0	0	2	NBC, FM	Boat
27	ANGANAMEI		586	621		647	96	318		2	2	0	0	3		
		Anganamei	319	253	Kaningara SHC	271	46	133	13.02.18	1	1	0	0	0	NBC, FM	Boat
		Marianmei	267	368	Kaningara SHC	376	50	185	13.02.18	1	1	0	0	3	NBC, FM	Boat
28	TARAKAI		452	609		641	108	317		3	3	0	0	32		
		Sevenbuk	221	260	Kaningara SHC	271	47	132	13.02.18	1	1	0	0	18	NBC, FM	Boat
		Tarakai	196	304	Kaningara SHC	285	47	143	13.02.18	1	1	0	0	0	NBC, FM	Boat
		Maribon	35	45	Kaningara SHC	85	14	42	13.02.18	1	1	0	0	14	NBC, FM	Boat
29	MESKA		851	996		1,005	153	498		3	3	0	0	88		

LLG	WARD	VILLAGE	Estimated 2017 Data Based On 2000 Census	Estimated 2017 Data Based On 2014 Data	Health Centre	Population Surveyed	House Holds Surveyed	Nets Issued	Date Of Distribution	Village	Digicel	Bmoble	Citfon	Houses With Radios	Radio Networks	Comment
		Yembiyemi		531	Kaningara SHC	516	95	256	16.02.18	1	1	0	0	36	FM, NBC	Boat - Comes under Gawi Rural - ward 24. Airfield here
		Mali (Mari)		81	Kaningara SHC	89	14	55	16.02.18	1	1	0	0	0	FM, NBC	Boat - Comes under Gawi Rural - ward 23
KERAM RURAL			30,778	32,189		33,485	5,222	16,314		74	0	0	0	712	66	
1	CHIMUNDO		830	530		732	138	363		2	0	0	0	0		
		Chimundo	782	279	Kambot SHC	732	138	363	22.02.18	1	0	0	0	0	FM Wewak	Boat
		Chimundo C/Sch	48	251	Kambot SHC					1						Included under Sumundo
2	KAMBOT		746	337		532	89	261		2	0	0	0	0		
		Kambot 1	690	337	Kambot SHC	532	89	261	20.02.18	1	0	0	0	0	FM Wewak	Boat
		Kambot C/Sch	56	0	Kambot SHC					1						Included under Kambot 1
3	KAMBOT		302	604		384	70	195		1	0	0	0	0		
		Kambot 2	302	604	Kambot SHC	384	70	195	20.02.18	1	0	0	0	0	FM Wewak	Boat
4	KAMBOT		905	786		630	130	314		1	0	0	0	0		
		Kambot 3	905	786	Kambot SHC	630	130	314	20.02.18	1	0	0	0	0	FM Wewak	Boat
5	BOBTEN		1,065	1,107		1,068	192	518		2	0	0	0	0		
		Bobten 1	429	402	Kambot SHC	476	92	238	21.02.18	1	0	0	0	0	FM Wewak	Boat
		Bobten 2	636	704	Kambot SHC	592	100	280	21.02.18	1	0	0	0	0	FM Wewak	Boat
6	KOROGOPA		1,555	1,133		1,299	186	626		5	0	0	0	89		
		Korogopa 1	553	650	Kambot SHC	672	91	324	17.02.18	1	0	0	0	62	FM Wewak	Boat
		Korogopa 2	186	368	Kambot SHC	437	68	210	17.02.18	1	0	0	0	23	FM Wewak	Boat
		Langaten	434	0	Kambot SHC					1						included under Lorogopa 1
		Yip Stn	256	115	Kambot SHC	190	27	92	20.02.18	1	0	0	0	4	FM Wewak	Boat
		Yip Comm.Sch	125	0	Kambot SHC					1						Included under Yip Station
7	PUSYTEN		530	712		689	122	332		1	0	0	0	4		
		Pusyten	530	712	Kambot SHC	689	122	332	19.02.18	1	0	0	0	4	FM Wewak	Boat
8	KEKTEN		329	350		706	100	326		1	0	0	0	38		
		Kekten	329	350	Kambot SHC	706	100	326	19.02.18	1	0	0	0	38	FM Wewak	Boat
9	BUTEN		1,132	1,353		1,558	234	727		3	0	0	0	22		
		Buten	598	693	Kambot SHC	765	118	351	17.02.18	1	0	0	0	22	FM Wewak	Boat
		Munytien	377	391	Kambot SHC	506	80	236	17.02.18	1	0	0	0	0	FM Wewak	Boat
		Wore	158	269	Kambot SHC	287	36	140	17.02.18	1	0	0	0	0	FM Wewak	Boat
10	YAMEN		913	1,304		1,456	210	656		2	0	0	0	8		
		Yamen 1	336	586	Kambot SHC	591	85	269	18.02.18	1	0	0	0	2	FM Wewak	Boat
		Yamen 2	577	719	Kambot SHC	865	125	387	18.02.18	1	0	0	0	6	FM Wewak	Boat
11	MANU		790	902		955	148	462		2	0	0	0	10		
		Manu	381	415	Kambot SHC	413	74	197	18.02.18	1	0	0	0	2	FM Wewak	Boat
		Simbiri	409	488	Kambuku HC	542	74	265	19.02.18	1	0	0	0	8	93 FM	Close to Kambuku
12	KAMBUKU		796	847		841	136	423		2	0	0	0	87		
		Kambuku	600	517	Kambuku HC	841	136	423	20.02.18	1	0	0	0	87	93 FM	Boat
		Saramandi	196	329	Kambuku HC					1					93 FM	Section name - Included under Kambuku
13	PAMBAN		684	690		757	116	378		1	0	0	0	39		
		Pamban	684	690	Kambuku HC	757	116	378	18.02.18	1	0	0	0	39	93 FM	Boat
14	BOBATEN		1,257	1,176		1,198	168	596		1	0	0	0	41		
		Bobaten	1,257	1,176	Kambuku HC	1,198	168	596	18.02.18	1	0	0	0	41	93 FM	Boat
15	LANGAM		815	756		883	142	438		1	0	0	0	21		
		Langam	815	756	Kambuku HC	883	142	438	18.02.18	1	0	0	0	21	93 FM	Boat
16	MONGOL		646	1,438		673	65	329		2	0	0	0	3		
		Kaimbal	156	515	Kambuku HC	371	35	181	18.02.18	1	0	0	0	2	93 FM	Boat
		Mongol	490	923	Kambuku HC	302	30	148	18.02.18	1	0	0	0	1	93 FM	Boat
17	WOM		1,755	1,576		1,744	227	853		3	0	0	0	15		
		Wom 1	711	724	Kambuku HC	740	89	361	19.02.18	1	0	0	0	9	93 FM	Boat
		Wom 2	955	852	Kambuku HC	1,004	138	492	19.02.18	1	0	0	0	6	93 FM	Boat
		Bandal	88	0	Kambuku HC					1					93 FM	Included under Wom 2
18	RATEN		882	813		842	103	418		2	0	0	0	17		
		Raten 1	438	392	Kambuku HC	371	42	185	19.02.18	1	0	0	0	1	93 FM	Boat
		Raten 2	444	420	Kambuku HC	471	61	233	19.02.18	1	0	0	0	16	93 FM	Boat
19	KETRO		284	245		190	27	93		1	0	0	0	6		
		Ketro	284	245	Kambuku HC	190	27	93	17.02.18	1	0	0	0	6	93 FM	Boat
20	BANIAMTA		455	349		392	55	195		1	0	0	0	26		
		Baniamata	455	349	Kambuku HC	392	55	195	17.02.18	1	0	0	0	26	93 FM	Boat
21	KAMEN		1,003	876		903	122	443		2	0	0	0	11		
		Kamen	582	501	Kambuku HC	781	100	383	17.02.18	1	0	0	0	9	93 FM	Boat
		Sangambun	421	375	Kambuku HC	122	22	60	17.02.18	1	0	0	0	2	93 FM	Boat
22	MARUA		984	881		1,021	200	472		1	0	0	0	0		
		Marua	984	881	Kambuku HC	1,021	200	472	01.03.18	1	0	0	0	0		Boat
23	YANBOE		934	891		1,015	129	481		1	0	0	0	0		
		Yanboe	934	891	Kambuku HC	1,015	129	481	01.03.18	1	0	0	0	0		Boat
24	NANTEN		1,199	1,017		1,184	170	576		1	0	0	0	0		
		Nanten	1,199	1,017	Kambuku HC	1,184	170	576	01.03.18	1	0	0	0	0		Boat
25	YAR		780	907		1,125	184	511		3	0	0	0	31		
		Yar	436	513	Kambot SHC	617	100	299	21.02.18	1	0	0	0	18	FM Wewak	Boat
		Yaut	334	394	Kambot SHC	508	84	212	21.02.18	1	0	0	0	13	FM Wewak	Boat
		Momunep	10	0	Kambot SHC					1						Included under Yar
26	BAGARAM		1,024	1,059		1,131	218	543		2	0	0	0	33		561
		Bagaram	479	413	Kambot SHC	561	99	281	21.02.18	1	0	0	0	32	FM Wewak	Boat
		Lembun	546	646	Kambot SHC	570	119	262	21.02.18	1	0	0	0	1	FM Wewak	Boat
27	KIVIM		1,405	1,372		1,412	225	751		3	0	0	0	26		
		Angisi	627	625	Bunam HC	632	103	321	19.02.18	1	0	0	0	9	FM,AM	Boat
		Bomenga	273	366	Bunam HC	416	65	229	18.02.18	1	0	0	0	4	FM,AM	Boat
		Bunam	505	381	Bunam HC	364	57	201	18.02.18	1	0	0	0	13	FM,AM	Boat
28	LONGWUK		561	608		541	84	290		3	0	0	0	9		
		Longwuk 1	461	283	Bunam HC	233	32	124	19.02.18	1	0	0	0	1	FM,AM	Boat
		Longwuk 2	83	132	Bunam HC	171	28	90	19.02.18	1	0	0	0	8	FM,AM	Boat
		Wusetak	17	193	Bunam HC	137	24	76	19.02.18	1	0	0	0	0	FM,AM	Boat
29	MUNGUM		455	524		541	97	278		2	0	0	0	23		
		Komting		NEW	Bunam HC	275	44	139	19.02.18	1	0	0	0	0	FM,AM	Boat
		Mungum	455	524	Bunam HC	266	53	139	19.02.18	1	0	0	0	23	FM,AM	Boat
30	MINIAS		655	699		703	121	355		2	0	0	0	9		
		Kongrum/Minias	346	400	Bunam HC</											

LLG	WARD	VILLAGE	Estimated 2017 Data Based On 2000 Census	Estimated 2017 Data Based On 2014 Data	Health Centre	Population Surveyed	House Holds Surveyed	Nets Issued	Date Of Distribution	Village	Digicel	Bmoble	Citfon	Houses With Radios	Radio Networks	Comment
32	NONJITO		776	779		830	139	398		3	0	0	0	53		
		Nito	148	133	Bunam HC	185	31	88	25.02.18	1	0	0	0	14	FM,AM	Boat
		Nonjito	338	346	Bunam HC	359	58	173	25.02.18	1	0	0	0	17	FM,AM	Boat
		Tovini	290	301	Bunam HC	286	50	137	25.02.18	1	0	0	0	22	FM,AM	Boat
33	LIKAN		523	438		534	87	274		1	0	0	0	0		
		Likan	523	438	Bunam HC	534	87	274	21.02.18	1	0	0	0	0	FM,AM	Boat
34	KLOROWOM		421	789		716	115	366		1	0	0	0	8		
		Klorowom	421	789	Bunam HC	716	115	366	21.02.18	1	0	0	0	8	FM,AM	Boat
35	SORI		619	838		795	157	393		5	0	0	0	15		
		Moli	156	189	Bunam HC	141	27	73	23.02.18	1	0	0	0	1	FM,AM	Boat
		Sori 1	202	167	Bunam HC	243	50	120	23.02.18	1	0	0	0	5	FM,AM	Boat
		Sori 2	161	154	Bunam HC	90	20	43	23.02.18	1	0	0	0	0	FM,AM	Boat
		Dumfu	100	118	Bunam HC	120	24	58	23.02.18	1	0	0	0	0	FM,AM	Boat
		Anjo	NEW	210	Bunam HC	201	36	99	23.02.18	1	0	0	0	9	FM,AM	Boat
36	PANITEN		771	888		823	112	403		1	0	0	0	23		
		Paniten	771	888	Kambuku HC	823	112	403	19.02.18	1	0	0	0	23	93 FM	Boat
37	PATAKA		788	1,122		1,087	168	532		2	0	0	0	44		
		Lol	317	310	Kambuku HC	355	68	174	19.02.18	1	0	0	0	3	93 FM	Boat
		Pataka	471	813	Kambuku HC	732	100	358	19.02.18	1	0	0	0	41	93 FM	Boat
38	MUI		682	933		986	144	442		4	0	0	0	1		
		Tobido	113	142	Bunam HC	146	24	69	25.02.18	1	0	0	0	1	FM,AM	Boat/Trek
		Nomare	256	235	Bunam HC	281	48	125	25.02.18	1	0	0	0	0	FM,AM	Boat/Trek
		Mui	313	277	Bunam HC	312	40	146	25.02.18	1	0	0	0	0	FM,AM	Boat/Trek
		Pella Kamal	NEW	279	Bunam HC	247	32	102	25.02.18	1	0	0	0	0	FM,AM	Boat/Trek
MARIENBURG RURAL			27,348	30,633		29,392	4,970	14,324		72	37	14	0	528	46	
1	KASMIN 2		1,630	3,167		3,094	483	1,445		5	5	5	0	0		
		Kamavilla	NEW	876	Angoram Hos2	319	50	149	20.02.18	1	1	1	0	0		Road
		Salaki	NEW	572	Angoram Hos2	653	100	299	20.02.18	1	1	1	0	0		Road
		Balbal	NEW	729	Angoram Hos2	918	150	438	20.02.18	1	1	1	0	0		Road
		Kasmin 2	1,630	212	Angoram Hos2	903	133	413	20.02.18	1	1	1	0	0		Road
		Vilavilla	NEW	779	Angoram Hos2	301	50	146	20.02.18	1	1	1	0	0		Road
2	KASMIN 1		1,722	2,899		2,201	407	1,058		7	6	6	0	0		
		Kasmin 1	454	483	Angoram Hos2	573	97	265	22.02.18	1	1	1	0	0		Road
		Gavieng Sett.	398	981	Angoram Hos2	270	63	138	22.02.18	1	1	1	0	0		Road
		Mansep Sett.	534	551	Angoram Hos2	285	50	139	22.02.18	1	1	1	0	0		Road
		Dagua Camp	150	216	Angoram Hos2	353	81	174	22.02.18	1	1	1	0	0		Road
		Kerosin/Calter	186	575	Angoram Hos2	298	50	144	22.02.18	1	1	1	0	0		Road
		Kamavilla Prince	NEW	94	Angoram Hos2					1						Non Existant
		Kunai Heights	NEW	NEW	Angoram Hos2	422	66	198	22.02.18	1	1	1	0	0		Road
3	MANSEP		855	1,185		1,352	264	739		3	3	3	0	0		
		Gavieng	215	329	Angoram Hos2	457	89	227	23.02.18	1	1	1	0	0		Road
		Mansep	344	497	Angoram Hos2	648	95	303	23.02.18	1	1	1	0	0		Road
		Mosan	296	358	Angoram Hos2	247	80	209	23.02.18	1	1	1	0	0		Road
4	ARIAPAN		1,291	2,098		1,472	268	728		4	0	0	0	0		
		Ariapan	186	505	Angoram Hos2	362	70	183	25.02.18	1	0	0	0	0		Road
		Karanas	211	294	Angoram Hos2	271	49	127	25.02.18	1	0	0	0	0		Road
		Waskurin	582	609	Angoram Hos2	592	100	288	25.02.18	1	0	0	0	0		Road
		Ariapan R/Sett.	311	690	Angoram Hos2	247	49	130	25.02.18	1	0	0	0	0		Road
5	BOIK		561	708		563	100	265		2	0	0	0	0		
		Boik	283	383	Angoram Hos2	285	50	134	26.02.18	1	0	0	0	0		Road
		Kasmin 3 (Nub)	279	325	Angoram Hos2	278	50	131	26.02.18	1	0	0	0	0		Road
6	KIS		874	922		903	129	429		1	0	0	0	0		
		Kis	874	922	Angoram Hos2	903	129	429	26.02.18	1	0	0	0	0		Boat
7	KAUP		1,878	1,473		1,062	199	511		4	0	0	0	0		
		kaup	1,174	1,121	Angoram Hos2	507	99	247	27.02.18	1	0	0	0	0		Road
		kaup Logging	283	0	Angoram Hos2					1						Road
		Kaup Com. Sch	46	352	Angoram Hos2					1						Road
		Kaup Sett.	375	0	Angoram Hos2	555	100	264	27.02.18	1	0	0	0	0		Road
8	MURIK		1,145	754		751	102	375		3	3	0	0	41		
		Aramut	480	276	Marienburg HC	298	41	144	25.02.18	1	1	0	0	10	NBC	Boat
		Jangaimot	284	221	Marienburg HC	221	31	113	25.02.18	1	1	0	0	24	NBC	Boat
		Wagamut	381	256	Marienburg HC	232	30	118	25.02.18	1	1	0	0	7	NBC	Boat
9	DARAPAP		832	684		575	89	278		1	1	0	0	21		
		Darapap	832	684	Marienburg HC	575	89	278	25.02.18	1	1	0	0	21	NBC	Boat
10	KARAU		550	328		338	68	172		1	1	0	0	17		
		Karau	550	328	Marienburg HC	338	68	172	25.02.18	1	1	0	0	17	NBC	Boat
11	MENDAM		744	455		412	73	206		1	1	0	0	28		
		Mendam	744	455	Marienburg HC	412	73	206	25.02.18	1	1	0	0	28	NBC	Boat
12	BIN		1,438	1,364		1,349	258	655		1	1	0	0	28		
		Bin	1,438	1,364	Marienburg HC	1,349	258	655	23.02.18	1	1	0	0	28	NBC	Boat
13	SUK		1,436	1,494		1,332	262	669		5	5	0	0	85		
		Yawa	NEW	NEW	Marienburg HC	221	34	106	27.02.18	1	1	0	0	19	NBC	
		Bonam	163	199	Marienburg HC	153	41	79	27.02.18	1	1	0	0	12	NBC	Road
		Mangan	669	673	Marienburg HC	355	68	176	27.02.18	1	1	0	0	28	NBC	Road
		Suk	423	535	Marienburg HC	415	90	212	27.02.18	1	1	0	0	24	NBC	Road
		Mariengberg	181	86	Marienburg HC	188	29	96	27.02.18	1	1	0	0	2	NBC	Road
14	IMBANDO		947	803		856	153	432		2	2	0	0	36		
		Imbando	667	590	Marienburg HC	341	68	170	28.02.18	1	1	0	0	12	NBC	Boat
		Tawai	281	212	Marienburg HC	515	85	262	28.02.18	1	1	0	0	24	NBC	Boat
15	MAMBER		438	615		566	112	282		1	1	0	0	13		
		Mamber	438	615	Marienburg HC	566	112	282	28.02.18	1	1	0	0	13	NBC	Boat
16	WATAM		492	420		457	71	220		1	1	0	0	12		
		Watam	492	420	Marienburg HC	457	71	220	24.02.18	1	1	0	0	12	NBC	Boat
17	KOPAR		438	363		577	82	277		1	1	0	0	1		
		Kopar	438	363	Marienburg HC	577	82	277	24.02.18	1	1	0	0	1	NBC	Boat
18	MABUK		688	766		755	130	365		2	2	0	0	10		
		Mabuk	406	499	Marienburg HC	490	92	235	23.02.18	1	1	0	0	2	NBC	Boat
		Singarin	283	268	Marienburg HC	265	38	130	23.02.18	1	1	0	0	8	NBC	

ANNEX TWO

EAST SEPIK PROVINCE
MAPRIK DISTRICT POPULATION 2017
LLIN REPORT SUMMARY SHEET

LLG	WARD	VILLAGE	Estimated 2017 Data Based On 2000 Census	Estimated 2017 Data Based On 2014 Data	Health Centre	Population Surveyed	House Holds Surveyed	Nets Issued	Date Of Distribution	Village	Digicel	Bmobile	Citifon	Houses With Radios	Radio Networks	Comment
MAPRIK			92,092	92,092		91,170	18,269	45,015		179	174	0	0	8,275	174	
ALBIGES / MABLEP RURAL			17,620	17,240		17,338	3,757	8,035		43	43	0	0	1,624	43	
1	IWAM		1,367	1,466		1,220	228	558		3	3	0	0	104		
		Aunyalim	435	413	Maprik Hos	230	50	105	21.11.17	1	1	0	0	22	FM/AM	Road
		Supa	430	489	Maprik Hos	469	79	215	21.11.17	1	1	0	0	35	FM/AM	Road
		Iwam	502	564	Maprik Hos	521	99	238	21.11.17	1	1	0	0	47	FM/AM	Road
2	KUKWAL		1,340	1,502		1,362	302	624		2	2	0	0	120		
		Jikinumbu	741	1,081	Maprik Hos	775	156	354	22.11.17	1	1	0	0	91	FM/AM	Road
		Kukwal	599	421	Maprik Hos	587	146	270	22.11.17	1	1	0	0	29	FM/AM	Road
3	KULUNGE		1,619	1,773		1,154	309	634		3	3	0	0	172		
		Kulunge	578	608	Maprik Hos	385	96	181	22.11.17	1	1	0	0	44	FM/AM	Road
		Matpamu	452	658	Maprik Hos	551	135	235	25.11.17	1	1	0	0	88	FM/AM	Road
		Saulik	588	507	Maprik Hos	218	78	218	22.11.17	1	1	0	0	40	FM/AM	Road
4	BONGIORA		1,028	929		1,026	262	502		2	2	0	0	130		
		Bongiora	564	527	Maprik Hos	582	162	296	22.11.17	1	1	0	0	61	FM/AM	Road
		Wambak	464	401	Maprik Hos	444	100	206	23.11.17	1	1	0	0	69	FM/AM	Road
5	APANGAI		2,003	1,404		2,407	575	1,065		5	5	0	0	184		
		Apangai 1	734	405	Maprik Hos	743	200	341	22.11.17	1	1	0	0	35	FM/AM	Road
		Apangai 2	510	405	Maprik Hos	730	164	322	22.11.17	1	1	0	0	65	FM/AM	Road
		Apangai 3	252	197	Maprik Hos	241	48	97	22.11.17	1	1	0	0	11	FM/AM	Road
		Yamelikum	430	277	Maprik Hos	399	100	168	22.11.17	1	1	0	0	24	FM/AM	Road
		Brigit com.Sch	76	121	Maprik Hos	294	63	137	22.11.17	1	1	0	0	49	FM/AM	Road
6	AMI		906	895		899	197	403		3	3	0	0	85		
		Ami 1	480	450	Maprik Hos	444	100	193	24.11.17	1	1	0	0	48	FM/AM	Road
		Ami 2	427	401	Maprik Hos	415	86	191	23.11.17	1	1	0	0	33	FM/AM	Road
		Ami Pri/School	NEW	44	Maprik Hos	40	11	19	23.11.17	1	1	0	0	4	FM/AM	Road
7	AMAHUP		1,294	1,394		1,286	273	552		2	2	0	0	100		
		Amahup 1	696	881	Maprik Hos	906	185	392	22.11.17	1	1	0	0	67	FM/AM	Road
		Amahup 2	597	513	Maprik Hos	380	88	160	22.11.17	1	1	0	0	33	FM/AM	Road
8	WAMSOK		2,004	1,709		1,876	404	862		4	4	0	0	157		
		Amom	451	316	Maprik Hos	393	74	182	25.11.17	1	1	0	0	28	FM/AM	Road/6 Hr Trek
		Wamsok 4	577	418	Maprik Hos	419	92	186	25.11.17	1	1	0	0	28	FM/AM	Road
		Wamsok 1	435	437	Maprik Hos	454	113	213	25.11.17	1	1	0	0	39	FM/AM	Road
		Wamsok 2	542	538	Maprik Hos	610	125	281	25.11.17	1	1	0	0	62	FM/AM	Road
9	SUPARI		1,190	1,112		1,161	219	516		5	5	0	0	70		
		Nilu 1	413	423	Albinama SHC	449	85	197	24.11.17	1	1	0	0	44	FM/AM	Road/6 Hr Trek
		Baiaga	228	263	Albinama SHC	275	47	125	24.11.17	1	1	0	0	11	FM/AM	Road
		Supari	292	258	Albinama SHC	272	50	122	24.11.17	1	1	0	0	7	FM/AM	Road
		Nilu 2	183	168	Albinama SHC	165	37	72	24.11.17	1	1	0	0	8	FM/AM	Road
		Supari Com.Sch	75	0	Albinama SHC					1	1	0	0		FM/AM	Included under Supari
10	GOENGOEN		1,125	1,217		1,314	287	589		4	4	0	0	93		
		Goengoen	355	400	Maprik Hos	360	94	161	25.11.17	1	1	0	0	22	FM/AM	Road
		Milak	360	446	Maprik Hos	460	83	203	25.11.17	1	1	0	0	29	FM/AM	Road
		Waikum	349	302	Maprik Hos	420	93	192	25.11.17	1	1	0	0	33	FM/AM	Road
		Bambra com sch	61	70	Maprik Hos	74	17	33	25.11.17	1	1	0	0	9	FM/AM	Road
11	DAHABINGA		827	800		838	173	382		3	3	0	0	100		
		Butiga	277	245	Maprik Hos	238	50	108	25.11.17	1	1	0	0	50	FM/AM	Road
		Dahabinga	413	387	Maprik Hos	443	93	204	25.11.17	1	1	0	0	33	FM/AM	Road
		Mahapitum	137	168	Maprik Hos	157	30	70	25.11.17	1	1	0	0	17	FM/AM	Road
12	KULELIKUM		774	775		652	128	355		2	2	0	0	67		
		Kulelikum	481	497	Maprik Hos	464	98	202	24.11.17	1	1	0	0	50	FM/AM	Road
		Magapita	293	277	Maprik Hos	188	30	153	24.11.17	1	1	0	0	17	FM/AM	Road
13	WALAHUTA		1,045	1,008		952	202	462		3	3	0	0	130		
		Waluhuta	444	443	Maprik Hos	393	94	207	25.11.17	1	1	0	0	30	FM/AM	Road
		Higiambel	293	335	Maprik Hos	267	54	121	25.11.17	1	1	0	0	52	FM/AM	Road
		Saones	307	230	Maprik Hos	292	54	134	25.11.17	1	1	0	0	48	FM/AM	Road
14	NINGALIM		1,099	1,255		1,191	198	531		2	2	0	0	112		
		Ningalim	1,099	1,007	Maprik Hos	1,066	175	476	24.11.17	1	1	0	0	102	FM/AM	Road/Trekking
		Ningalim Pri/School	NEW	248	Maprik Hos	125	23	55	24.11.17	1	1	0	0	10	FM/AM	Road/Trekking
BUMBITA/MUHAN RURAL			24,840	22,904		22,453	4,369	11,274		46	45	0	0	1,304	45	
1	ALBINAMA 1		1,799	1,674		1,664	314	834		2	2	0	0	97		
		Albinama 1	938	862	Albinama SHC2	824	164	413	03.12.17	1	1	0	0	63	95.3 FM	Road
		Bolomita	860	811	Albinama SHC2	840	150	421	03.12.17	1	1	0	0	34	95.3 FM	Road
2	TIMIGIR		1,681	1,470		1,656	288	831		4	4	0	0	184		
		Imbras	591	619	Brugam HC	522	80	262	08.12.17	1	1	0	0	8	95.3 FM	Road
		Timigir	755	615	Brugam HC	557	107	280	08.12.17	1	1	0	0	16	95.3 FM	Road
		Brugam Miss.Stn	335	237	Brugam HC	306	55	153	08.12.17	1	1	0	0	153	95.3 FM	Road
		Inganamber	NEW		Brugam HC	271	46	136	08.12.17	1	1	0	0	7	95.3 FM	Road
3	BALIF 1		822	783		775	183	389		2	2	0	0	33		
		Balif 1	822	734	Albinama SHC2	709	165	356	03.12.17	1	1	0	0	31	95.3 FM	Road
		Sir Lus Pri/School	NEW	49	Albinama SHC2	66	18	33	03.12.17	1	1	0	0	2	95.3 FM	Road
4	SALATA		1,305	1,309		1,171	208	589		3	3	0	0	45		
		Aluwingei	245	291	Brugam HC	289	48	147	08.12.17	1	1	0	0	13	95.3 FM	Road
		Salata	567	548	Brugam HC	454	97	228	08.12.17	1	1	0	0	7	95.3 FM	Road
		Waragom	492	470	Brugam HC	428	63	214	08.12.17	1	1	0	0	25	95.3 FM	Road
5	BONOHOL		1,461	1,425		1,526	258	766		3	3	0	0	78		
		Bonohol	755	733	Brugam HC	752	133	376	08.12.17	1	1	0	0	36	95.3 FM	Road
		Soloum	422	474	Brugam HC	441	76	221	08.12.17	1	1	0	0	22	95.3 FM	Road
		Doluwom	284	218	Brugam HC	333	49	169	08.12.17	1	1	0	0	20	95.3 FM	Road
6	URITA		1,792	1,652		1,607	302	806		4	4	0	0	69		
		Bumbita	429	347	Brugam HC	329	62	165	08.12.17	1	1	0	0	16	95.3 FM	Road
		Saunes	328	339	Brugam HC	366	65	184	08.12.17	1	1	0	0	20	95.3 FM	Road
		Urita	499	471	Brugam HC	482	90	241	08.12.17	1	1	0	0	28	95.3 FM	Road
		Wahun	537													

LLG	WARD	VILLAGE	Estimated 2017 Data Based On 2000 Census	Estimated 2017 Data Based On 2014 Data	Health Centre	Population Surveyed	House Holds Surveyed	Nets Issued	Date Of Distribution	Village	Digicel	Bmobile	Citifon	Houses With Radios	Radio Networks	Comment
8	KAMANAKOR		1,776	1,422		1,489	290	752		2	2	0	0	78		
		Kamanakor	1,776	731	Ilahita SHC	692	140	353	04.12.17	1	1	0	0	40	95.3 FM	Road
		Kamanakor 2	NEW	691	Ilahita SHC	797	150	399	04.12.17	1	1	0	0	38	95.3 FM	Road
9	SUNUHU 1		1,955	1,736		1,748	350	877		3	2	0	0	126		
		Sunuhu 1	1,158	982	Ilahita SHC	963	200	484	04.12.17	1	1	0	0	70	95.3 FM	Road
		Sunuhu 2	797	685	Ilahita SHC	785	150	393	04.12.17	1	1	0	0	56	95.3 FM	Road
		Numuku Pri/School	NEW	69	Ilahita SHC					1						School closed down
10	MUI 1		1,439	1,422		1,372	257	687		3	3	0	0	73		
		Mui 1	519	408	Ilahita SHC	316	71	158	04.12.17	1	1	0	0	12	95.3 FM	Road
		Mui 2	495	535	Ilahita SHC	614	106	307	04.12.17	1	1	0	0	35	95.3 FM	Road
		Mui 3	424	479	Ilahita SHC	442	80	222	04.12.17	1	1	0	0	26	95.3 FM	Road
11	UTAMUP		1,359	1,415		1,482	272	744		3	3	0	0	88		
		Ingamblis	825	457	Ilahita SHC	438	77	219	04.12.17	1	1	0	0	27	95.3 FM	Road
		Ingamblis 2	NEW	378	Ilahita SHC	480	94	243	04.12.17	1	1	0	0	19	95.3 FM	Road
		Utamup	534	580	Ilahita SHC	564	101	282	04.12.17	1	1	0	0	42	95.3 FM	Road
12	ILAHITA 1		1,415	1,217		1,126	250	572		4	4	0	0	50		
		Ilahita 6	384	256	Ilahita SHC	259	59	130	04.12.17	1	1	0	0	6	95.3 FM	Road
		Ilahita 1	613	556	Ilahita SHC	481	100	243	04.12.17	1	1	0	0	36	95.3 FM	Road
		Ilahita 2	417	349	Ilahita SHC	293	64	149	04.12.17	1	1	0	0	6	95.3 FM	Road
		Hiesy Pri/School	NEW	55	Ilahita SHC	93	27	50	04.12.17	1	1	0	0	2	95.3 FM	Road
13	ILAHITA 3		1,405	1,289		1,198	254	601		2	2	0	0	55		
		Ilahita 3	891	842	Ilahita SHC	736	151	369	04.12.17	1	1	0	0	29	95.3 FM	Road
		Ilahita 7	515	447	Ilahita SHC	462	103	232	04.12.17	1	1	0	0	26	95.3 FM	Road
14	ALBINAMA 2		1,244	1,186		1,044	231	523		2	2	0	0	88		
		Albinama 2	577	584	Albinama SHC2	495	99	248	03.12.17	1	1	0	0	43	95.3 FM	Road
		Albinama 3	668	603	Albinama SHC2	549	132	275	03.12.17	1	1	0	0	45	95.3 FM	Road
15	ILAHITA 4		1,050	884		912	152	456		2	2	0	0	56		
		Ilahita 5	405	352	Ilahita SHC	412	51	206	04.12.17	1	1	0	0	20	95.3 FM	Road
		Ilahita 4	645	533	Ilahita SHC	500	101	250	04.12.17	1	1	0	0	36	95.3 FM	Road
16	NUMANGU		972	731		695	164	349		2	2	0	0	35		
		Numangu	503	385	Albinama SHC2	352	84	177	03.12.17	1	1	0	0	17	95.3 FM	Road
		Ulahimabel	468	346	Albinama SHC2	343	80	172	03.12.17	1	1	0	0	18	95.3 FM	Road
17	TAUNANGAS		1,373	1,429		1,216	231	609		2	2	0	0	54		
		Endipi	720	741	Brugam HC	732	146	366	08.12.17	1	1	0	0	40	95.3 FM	Road
		Taunangas	653	689	Brugam HC	484	85	243	08.12.17	1	1	0	0	14	95.3 FM	Road
				0												
MAPRIK \ WORA RURAL			27,438	30,428		30,243	5,298	14,953		52	48	0	0	4,192	48	
1	KLABU 1		1,230	1,287		1,224	218	600		1	1	0	0	74		
		Klabu 1	1,230	1,287	Maprik Hos2	1,224	218	600	21.11.17	1	1	0	0	74	FM/AM	Road
2	KLABU 2		578	873		701	115	345		2	1	0	0	83		
		Klabu 2	578	717	Maprik Hos2	701	115	345	22.11.17	1	1	0	0	83	FM/AM	Road
		Klabu Pri/School	NEW	156	Maprik Hos2					1						School Close
3	JAME		1,209	1,169		1,556	225	763		3	3	0	0	226		
		Bartga	104	129	Maprik Hos2	145	24	71	05.12.17	1	1	0	0	8	FM/AM	1 Hr Trek
		Jame	588	555	Maprik Hos2	832	124	408	03.12.17	1	1	0	0	137	FM/AM	Road
		Lonem	518	484	Maprik Hos2	579	77	284	04.12.17	1	1	0	0	81	FM/AM	Road
4	NIAMIKUM		1,905	2,049		1,965	314	965		4	4	0	0	432		
		Balaguil	411	509	Maprik Hos2	353	67	173	04.12.17	1	1	0	0	154	FM/AM	1 Hr Trek
		Imbiap	277	296	Maprik Hos2	334	86	164	04.12.17	1	1	0	0	117	FM/AM	Road
		Eluwata/Mipil	147	262	Maprik Hos2	120	14	60	08.12.17	1	1	0	0	11	FM/AM	4 Hr Trek
		Niamikum	1,071	982	Maprik Hos2	1,158	147	568	04.12.17	1	1	0	0	150	FM/AM	Road
5	KUMINIMBIS 1		956	1,120		1,113	233	546		1	1	0	0	224		
		Kuminimbis 1	956	1,120	Maprik Hos2	1,113	233	546	27.11.17	1	1	0	0	224	FM/AM	Road
6	KUMINIMBIS 2		1,364	1,259		1,280	252	630		2	2	0	0	272		
		Kuminimbis 2	1,364	1,198	Maprik Hos2	1,233	242	607	27.11.17	1	1	0	0	246	FM/AM	Road
		Kuminimbis Pri/School	NEW	61	Maprik Hos2	47	10	23	27.11.17	1	1	0	0	26	FM/AM	Road
7	NAGIPAIM		711	763		751	137	369		1	1	0	0	129		
		Nagipaim	711	763	Maprik Hos2	751	137	369	01.12.17	1	1	0	0	129	FM/AM	1 Day Trek
8	NELIKUM		1,717	939		1,055	160	518		3	2	0	0	185		
		Serikum	397	265	Maprik Hos2					1						Included Under Ward 18-Ward 3
		Nelikum 2	636	214	Maprik Hos2	387	62	190	27.11.17	1	1	0	0	52	FM/AM	Road
		Nelikum 3	685	459	Maprik Hos2	668	98	328	27.11.17	1	1	0	0	133	FM/AM	Road
9	MAPRIK 1		1,741	2,039		1,961	277	962		2	2	0	0	262		
		Maprik 1	1,117	911	Maprik Hos2	1,050	147	514	05.12.17	1	1	0	0	93	FM/AM	Road
		Maprik 2	625	1,128	Maprik Hos2	911	130	448	04.12.17	1	1	0	0	169	FM/AM	Road
10	KINBANGUA		1,534	1,046		931	125	467		2	1	0	0	74		
		Kinbangua	726	436	Maprik Hos2	931	125	467	23.11.17	1	1	0	0	74	FM/AM	Road
		Bainyik DPI	808	610	Maprik Hos2					1						Included under Ward 18-Ward 4
11	WORA		2,003	1,013		1,483	299	742		3	3	0	0	76		
		Nukakum	435	248	Maprik Hos2	441	100	217	05.12.17	1	1	0	0	50	FM/AM	Road
		Serandu	311	235	Maprik Hos2	337	69	166	05.12.17	1	1	0	0	0	FM/AM	Road
		Wora	1,257	530	Maprik Hos2	705	130	359	05.12.17	1	1	0	0	26	FM/AM	Road
12	GWELIKUM 1		2,339	2,556		2,405	435	1,229		3	3	0	0	237		
		Gwelikum 1	876	1,073	Maprik Hos2	871	178	462	22.11.17	1	1	0	0	0	FM/AM	Road
		Gwelikum 2	793	800	Maprik Hos2	918	145	467	22.11.17	1	1	0	0	145	FM/AM	Road
		Nerikim	669	682	Maprik Hos2	616	112	300	22.11.17	1	1	0	0	92	FM/AM	Road
13	GATNIKUM		1,528	1,613		1,706	316	836		4	4	0	0	164		
		Gatnikum	750	593	Maprik Hos2	893	160	437	22.11.17	1	1	0	0	103	FM/AM	Road
		Nindiko	304	289	Maprik Hos2	312	55	153	22.11.17	1	1	0	0	0	FM/AM	Road
		Samgik	473	493	Maprik Hos2	492	100	241	22.11.17	1	1	0	0	60	FM/AM	Road
		Mairowi Pri/School	NEW	239	Maprik Hos2	9	1	5	22.11.17	1	1	0	0	1	FM/AM	Road
14	AUPIK		1,384	1,438		1,447	287	714		3	3	0	0	195		
		Aupik 1	841	757	Maprik Hos2	945	175	468	25.11.17	1	1	0	0	109	FM/AM	Road
		Aupik 2	543	499	Maprik Hos2	431	98	211	25.11.17	1	1	0	0	85	FM/AM	Road
		Aupik Pri/School	NEW	182	Maprik Hos2	71	14	35	25.11.17							

LLG	WARD	VILLAGE	Estimated 2017 Data Based On 2000 Census	Estimated 2017 Data Based On 2014 Data	Health Centre	Population Surveyed	House Holds Surveyed	Nets Issued	Date Of Distribution	Village	Digicel	Bmobile	Citifon	Houses With Radios	Radio Networks	Comment
		Ningalimbi 3	347	261	Ilahita SHC2	308	62	152	23.11.17	1	1	0	0	39	FM/AM	Road
		Mamalimbi	NEW	343	Ilahita SHC2	210	48	103	23.11.17	1	1	0	0	23	FM/AM	Road
		Kwangiatama Pri/School	NEW	33	Ilahita SHC2	37	8	18	23.11.17	1	1	0	0	6	FM/AM	Road
17	SERAKIKUM		954	988		1,016	170	509		2	2	0	0	0		
		Serakikum 1	480	504	Ilahita SHC2	411	70	206	22.11.17	1	1	0	0	0	FM/AM	Road
		Serakikum 2	475	484	Ilahita SHC2	605	100	303	22.11.17	1	1	0	0	0	FM/AM	Road
18	MAPRIK URBAN		2,186	6,364		6,177	1,034	3,054		6	5	0	0	1,138		
		Maprik	2,186	0	Maprik Hos2					1						Road
		Ward 1	NEW	1,250	Maprik Hos2	790	101	387	03.12.17	1	1	0	0	154	FM/AM	Road
		Ward 2	NEW	594	Maprik Hos2	824	144	404	03.12.17	1	1	0	0	267	FM/AM	Road
		Ward 3	NEW	1,251	Maprik Hos2	1,197	200	610	03.12.17	1	1	0	0	183	FM/AM	Road
		Ward 4	NEW	1,260	Maprik Hos2	1,016	188	508	03.12.17	1	1	0	0	178	FM/AM	Road
		Ward 5	NEW	2,009	Maprik Hos2	2,350	401	1,145	03.12.17	1	1	0	0	356	FM/AM	Road
				0												
YAMIL \ TAMAUI RURAL			22,194	21,520		21,136	4,845	10,753		38	38	0	0	1,155	38	
1	KOMBIKUM		1,701	1,449		1,673	339	872		3	3	0	0	110		
		Kombikum 1	795	698	Kombikum HC	679	131	361	07.12.17	1	1	0	0	54	93.5 FM	Road
		Kombikum 2	481	446	Kombikum HC	483	98	240	07.12.17	1	1	0	0	7	93.5 FM	Road
		Kombikum 3	425	306	Kombikum HC	511	110	271	07.12.17	1	1	0	0	49	93.5 FM	Road
2	GWARIP		1,577	1,781		1,671	340	857		3	3	0	0	81		
		Gwarip 1	464	470	Kombikum HC	423	93	219	07.12.17	1	1	0	0	6	93.5 FM	Road
		Gwarip 2	309	286	Kombikum HC	373	68	201	07.12.17	1	1	0	0	21	93.5 FM	Road
		Yangisaku	805	1,025	Kombikum HC	875	179	437	07.12.17	1	1	0	0	54	93.5 FM	Road
3	BENGRAKUM		878	973		1,032	293	529		2	2	0	0	64		
		Bengrakum 1	374	455	Kombikum HC	487	143	248	07.12.17	1	1	0	0	30	93.5 FM	Road
		Bengrakum 2	503	517	Kombikum HC	545	150	281	07.12.17	1	1	0	0	34	93.5 FM	Road
4	YAUNJANGE		1,243	1,257		1,138	248	575		2	2	0	0	96		
		Yaunjange 1	378	902	Roma SHC	756	166	382	08.12.17	1	1	0	0	43	93.5 FM	Road
		Yaunjange 2	865	355	Roma SHC	382	82	193	08.12.17	1	1	0	0	53	93.5 FM	Road
5	SUAMBUKUM		844	783		714	170	365		3	3	0	0	36		
		Suambukun 1	398	354	Roma SHC	355	88	187	08.12.17	1	1	0	0	16	93.5 FM	Road
		Suambukun 2	363	353	Roma SHC	303	67	151	08.12.17	1	1	0	0	17	93.5 FM	Road
		Roma Miss.Stn	83	76	Roma SHC	56	15	27	08.12.17	1	1	0	0	3	93.5 FM	Road
6	KWIMBU 1		1,614	1,582		1,614	374	804		3	3	0	0	82		
		Kwimbu 1	739	664	Roma SHC	742	135	353	08.12.17	1	1	0	0	41	93.5 FM	Road
		Kwimbu 2	682	774	Roma SHC	695	200	361	08.12.17	1	1	0	0	33	93.5 FM	Road
		Kwimbu 3	193	144	Roma SHC	177	39	90	08.12.17	1	1	0	0	8	93.5 FM	Road
7	MALBA 1		1,631	1,533		1,443	327	734		2	2	0	0	55		
		Malba 1	924	829	Ulupu SHC	773	186	399	04.12.17	1	1	0	0	16	93.5 FM	Road
		Malba 2	707	704	Ulupu SHC	670	141	335	04.12.17	1	1	0	0	39	93.5 FM	Road
8	ULUPU		1,768	1,945		1,833	417	915		3	3	0	0	79		
		Aunyalim 1	363	505	Ulupu SHC	451	106	206	04.12.17	1	1	0	0	22	93.5 FM	Road
		Aunyalim 2	699	807	Ulupu SHC	697	172	362	07.12.17	1	1	0	0	32	93.5 FM	Road
		Ulupu	706	632	Ulupu SHC	685	139	347	05.12.17	1	1	0	0	25	93.5 FM	Road
9	YALAHINE		911	995		1,028	234	525		2	2	0	0	58		
		Nambenagu	413	434	Ulupu SHC	472	99	234	05.12.17	1	1	0	0	18	93.5 FM	Road
		Yalahine	499	560	Ulupu SHC	556	135	291	05.12.17	1	1	0	0	40	93.5 FM	Road
10	YAMIL 1		1,431	1,440		1,405	376	734		3	3	0	0	113		
		Yamil 1	470	601	Ulupu SHC	465	136	255	04.12.17	1	1	0	0	58	93.5 FM	Road
		Yamil 2	674	583	Ulupu SHC	546	141	275	04.12.17	1	1	0	0	31	93.5 FM	Road
		Yamil 3	287	256	Ulupu SHC	394	99	204	05.12.17	1	1	0	0	24	93.5 FM	Road
11	WAIKAKUM 1		2,242	1,835		1,941	531	971		2	2	0	0	36		
		Waikakum 1	683	953	Kombikum HC	850	250	418	06.12.17	1	1	0	0	8	93.5 FM	Road
		Waikakum 2	1,558	882	Kombikum HC	1,091	281	553	06.12.17	1	1	0	0	28	93.5 FM	Road
12	WAIKAKUM 3		2,007	1,157		1,211	275	626		2	2	0	0	41		
		Kwatgu	1,117	421	Kombikum HC	515	116	255	06.12.17	1	1	0	0	32	93.5 FM	Road
		Waikakum 3	891	736	Kombikum HC	696	159	371	06.12.17	1	1	0	0	9	93.5 FM	Road
13	SAIKISI 1		1,055	1,026		1,077	243	545		2	2	0	0	85		
		Saikisi 1	750	748	Kombikum HC	674	143	339	07.12.17	1	1	0	0	37	93.5 FM	Road
		Saikisi 2	304	277	Kombikum HC	403	100	206	07.12.17	1	1	0	0	48	93.5 FM	Road
14	DUMBIT		1,120	1,133		1,120	234	552		2	2	0	0	78		
		Dumbit 1	546	681	Roma SHC	682	144	341	08.12.17	1	1	0	0	51	93.5 FM	Road
		Dumbit 2	574	452	Roma SHC	438	90	211	08.12.17	1	1	0	0	27	93.5 FM	Road
15	YENIGO		1,556	1,785		1,467	325	761		2	2	0	0	62		
		Naramgo	789	899	Kombikum HC	663	145	346	06.12.17	1	1	0	0	25	93.5 FM	Road
		Yenigo	768	887	Kombikum HC	804	180	415	06.12.17	1	1	0	0	37	93.5 FM	Road
16	MENDIAMIN		615	845		769	119	388		2	2	0	0	79		
		Chologun	218	298	Ulupu SHC	356	55	179	04.12.17	1	1	0	0	39	93.5 FM	Road/Trekking
		Mendiamin	397	546	Ulupu SHC	413	64	209	04.12.17	1	1	0	0	40	93.5 FM	Road/Trekking

ANNEX THREE

EAST SEPIK PROVINCE
WEWAK DISTRICT POPULATION 2017
LLIN REPORT SUMMARY SHEET

LLG	WARD	VILLAGE	Estimated 2017 Data Based On 2000 Census	Estimated 2017 Data Based On 2014 Data	Health Centre	Population Surveyed	House Holds Surveyed	Nets Issued	Date Of Distribution	Village	Digital	Bmobile	Citfon	Houses With Radios	Radio Networks	Comment	
WEWAK			107,564	107,564		112,395	19,164	54,968			316	227	78	0	7,706	256	
BOIKIN \ DAGUA RURAL			26,455	24,886		23,241	4,583	11,462			67	56	0	0	1,104	65	
1	HAWAIN		2,867	2,919		2,804	564	1,355			6	5	0	0	272		
		Numbotui	390	321	Boiken HC	188	41	90	06.12.17	1	0	0	0	28	NBC Wewa	Road	
		Kambanumbo	740	811	Boiken HC	772	150	384	09.12.17	1	1	0	0	60	NBC Wewa	Road	
		Tangugle	126	170	Boiken HC	233	50	116	09.12.17	1	1	0	0	28	NBC Wewa	Road	
		Singang	301	252	Boiken HC	213	49	103	06.12.17	1	1	0	0	40	NBC Wewa	Road	
		Parom	1,172	1,067	Boiken HC	1,101	225	520	09.12.17	1	1	0	0	91	NBC Wewa	Road	
		Hawain Stn	138	297	Boiken HC	297	49	142	09.12.17	1	1	0	0	25	NBC Wewa	Road	
2	NIMIEGIN		372	377		189	50	90		1	1	0	0	14		Road	
		Nimiegin	372	377	Wewak UC	189	50	90	01.12.17	1	1	0	0	14	NBC Wewa	Road	
3	ARIN \ SURUMBA		918	866		929	265	447		3	0	0	0	119			
		Surumba	372	277	Boiken HC	262	48	125	30.11.17	1	0	0	0	11	NBC Wewa	Road	
		Kuarombo	227	248	Boiken HC	269	67	128	06.12.17	1	0	0	0	50	NBC Wewa	Road	
		Mapawia	320	340	Boiken HC	398	150	194	06.12.17	1	0	0	0	58	NBC Wewa	Road	
4	PENJEN \ PERINGA		940	807		841	175	412		4	2	0	0	119			
		Nimiegua	96	117	Boiken HC	127	25	60	12.12.17	1	1	0	0	23	NBC Wewa	Road	
		Peringa	345	274	Boiken HC	250	50	120	07.12.17	1	1	0	0	21	NBC Wewa	Road	
		Penjen	378	335	Boiken HC	329	73	158	07.12.17	1	0	0	0	61	NBC Wewa	Road/Trek	
		Jambirambe	121	81	Boiken HC	135	27	74	27.11.17	1	0	0	0	14	NBC Wewa	Road	
5	SIRO \ WANJO		927	738		501	99	240		2	0	0	0	6			
		Siro	200	134	Wewak UC	209	49	100	07.12.17	1	0	0	0	6	NBC Wewa	Road/Trek	
		Wanjo	726	605	Wewak UC	292	50	140	09.12.17	1	0	0	0		NBC Wewa	Road/Trek	
6	BOIKIN		1,461	1,476		1,436	285	679		6	6	0	0	62			
		Kuapun	276	300	Boiken HC	300	67	141	08.12.17	1	1	0	0	4	NBC Wewa	Road	
		Kurupie	291	304	Boiken HC	268	55	128	09.12.17	1	1	0	0		NBC Wewa	Road	
		Kaiembe	219	255	Boiken HC	358	69	168	08.12.17	1	1	0	0	12	NBC Wewa	Road	
		Ingo	313	333	Boiken HC	292	53	137	08.12.17	1	1	0	0	14	NBC Wewa	Road	
		Paja	274	217	Boiken HC	138	27	66	08.12.17	1	1	0	0	21	NBC Wewa	Road	
		Boikin miss.c/sch	89	67	Boiken HC	80	14	39	06.12.17	1	1	0	0	11	NBC Wewa	Road	
7	KARAWAP		1,268	924		901	199	424		4	3	0	0	28			
		Karawap	461	336	Boiken HC	351	91	165	09.12.17	1	0	0	0	8	NBC Wewa	Road	
		Kawanumbo	525	218	Boiken HC	134	30	62	11.12.17	1	1	0	0		NBC Wewa	Road	
		Majuom	222	164	Boiken HC	179	28	85	29.11.17	1	1	0	0	18	NBC Wewa	Road	
		Karawap Ptn	61	207	Boiken HC	237	50	112	09.12.17	1	1	0	0	2	NBC Wewa	Road	
8	YOU		1,421	1,563		1,451	266	686		4	4	0	0	54			
		You Island	148	172	Boiken HC	150	26	70	03.12.17	1	1	0	0	15	NBC Wewa	Boat	
		You no.2-Kringring	496	646	Boiken HC	599	100	282	08.12.17	1	1	0	0	13	NBC Wewa	Road	
		Utupunim	451	355	Boiken HC	345	74	164	10.12.17	1	1	0	0	12	NBC Wewa	Road	
		Utugoi	326	390	Boiken HC	357	66	170	08.12.17	1	1	0	0	14	NBC Wewa	Road	
9	KARASAU [EST]		891	778		738	161	347		2	1	0	0	19			
		Karasau Island	799	755	Boiken HC	738	161	347	01.12.17	1	1	0	0	19	NBC Wewa	Boat	
		Karasau C/Sch	92	23	Boiken HC					1						Included under Karasau Is.	
10	BANAK \ HOGI		1,455	1,358		1,496	377	785		6	6	0	0	136			
		Banak	256	178	Dagua HC	194	48	97	08.12.17	1	1	0	0	40	NBC	Road	
		Hogi	476	470	Dagua HC	488	97	248	06.12.17	1	1	0	0	14	NBC	Road	
		Kwangen	254	163	Dagua HC	148	36	75	08.12.17	1	1	0	0	9	NBC	Road	
		Humunduo	230	190	Dagua HC	185	100	120	06.12.17	1	1	0	0	5	NBC	Road	
		Walandum	202	321	Dagua HC	290	54	146	08.12.17	1	1	0	0	32	NBC	Road	
		Banak Com.Sch	37	36	Dagua HC	191	42	99	08.12.17	1	1	0	0	36	NBC	Road	
11	BOGUMATAI \ WAUTOGIK		789	621		466	99	240		2	2	0	0	43			
		Bogumatai	456	344	Dagua HC	201	49	107	06.12.17	1	1	0	0	12	NBC	Road	
		Wautogik	333	277	Dagua HC	265	50	133	06.12.17	1	1	0	0	31	NBC	Road	
12	DOGUR		859	834		776	136	395		2	2	0	0	71			
		Dogur	695	628	Dagua HC	527	95	263	03.12.17	1	1	0	0	42	NBC	Road	
		Dagua Mission	165	206	Dagua HC	249	41	132	03.12.17	1	1	0	0	29	NBC	Road	
13	WOGINARA 1		832	725		561	109	283		2	1	0	0	19			
		Woginara 1	715	702	Dagua HC	561	109	283	06.12.17	1	1	0	0	19	NBC	Road	
		Woginara Com Sch	118	23	Dagua HC					1						coved under Woginara 1	
14	WOGINARA 2		668	666		678	97	338		1	1	0	0	18			
		Woginara 2	668	666	Dagua HC	678	97	338	06.12.17	1	1	0	0	18	NBC	Road	
15	SAPUAIN		1,063	771		598	100	299		1	1	0	0	7			
		Sapuain	1,063	771	Dagua HC	598	100	299	08.12.17	1	1	0	0	7	NBC	Road	
16	URIP		491	380		338	54	167		1	1	0	0	0			
		Urip	491	380	Dagua HC	338	54	167	02.12.17	1	1	0	0	0	NBC	Road	
17	MAKOPIN		585	647		579	94	289		1	1	0	0	17			
		Makopin	585	647	Dagua HC	579	94	289	03.12.17	1	1	0	0	17	NBC	Road	
18	MAGUER		713	776		967	150	475		2	2	0	0	4			
		Maguer Sibigin	299	312	Dagua HC	641	100	313	02.12.17	1	1	0	0	4	NBC	Road	
		Subigen/Nagihe	414	464	Dagua HC	326	50	162	02.12.17	1	1	0	0	0	NBC	Road	
19	SMAIN \ BUT		1,223	1,222		1,238	213	621		2	2	0	0	2			
		But	461	476	Dagua HC	547	90	276	04.12.17	1	1	0	0	0	NBC	Road	
		Smain	762	745	Dagua HC	691	123	345	07.12.17	1	1	0	0	2	NBC	Road	
20	LOWAN		1,954	2,074		1,445	270	719		4	4	0	0	21			
		Kuminim	459	724	Dagua HC	444	79	222	04.12.17	1	1	0	0	10	NBC	Road	
		Lowan 2	442	417	Dagua HC	426	84	212	04.12.17	1	1	0	0	0	NBC	Road	
		Lowan 3	831	639	Dagua HC	407	80	201	04.12.17	1	1	0	0	0	NBC	Road	
		Lowan Com.Sch	222	294	Dagua HC	168	27	84	04.12.17	1	1	0	0	11	NBC	Road	
21	KAUK \ BALAM		1,720	1,358		1,255	229	628		4	4	0	0	14			
		Balam	681	365	Dagua HC	278	50	139	04.12.17	1	1	0	0	0	NBC	Road	
		Kauk	859	764	Dagua HC	544	97	272	04.12.17	1	1	0	0	7	NBC	Road	
		Gilgamok	92	69	Dagua HC	175	40	88	04.12.17	1	1	0	0	7	NBC	Road	
		Bai Mission	87	160	Dagua HC	258	42	129	04.12.17	1	1	0	0	0	NBC	Road	
22	SOWOM		2,184	2,026		2,269	439	1,149		5	5	0	0	48			
		Arohimi	328	367	Dagua HC	319	48	159	04.12.17	1	1	0	0	0	NBC	Road	
		Misuum	513	449	Dagua HC	476	99										

LLG	WARD	VILLAGE	Estimated 2017 Data Based On 2000 Census	Estimated 2017 Data Based On 2014 Data	Health Centre	Population Surveyed	House Holds Surveyed	Nets Issued	Date Of Distribution	Village	Digicel	Emobile	Citifon	Houses With Radios	Radio Networks	Comment
		Kotai	283	310	Dagua HC	284	52	142	03.12.17	1	1	0	0		NBC	Road
24	KUBREN		572	672		501	100	252		1	1	0	0	11		
		Kubren	572	672	Dagua HC	501	100	252	02.12.17	1	1	0	0	11	NBC	Road
			0	0												
TURUBU RURAL			13,823	14,589		15,423	2,650	7,463		58	48	4	0	1,223	41	
1	MANDI		1,154	1,434		1,330	202	677		2	2	1	0	103		
		Mandi	770	852	Wewak UC2	800	116	391	07.02.18	1	1	1	0	60	FM	Road
		Maur	383	581	Wewak UC2	530	86	286	07.02.18	1	1	0	0	43	FM	Road
2	FOROK		1,520	1,634		1,828	314	915		5	5	0	0	115		
		Forok 1	395	531	Wewak UC2	528	91	260	07.02.18	1	1	0	0	23	FM	Road
		Forok 2	261	242	Wewak UC2	282	48	138	07.02.18	1	1	0	0	19	FM	Road
		Musangun	294	291	Wewak UC2	323	51	166	07.02.18	1	1	0	0	12	FM	Road
		Forok 3	291	306	Wewak UC2	379	68	188	07.02.18	1	1	0	0	33	FM	Road
		Forok 4	279	264	Wewak UC2	316	56	163	07.02.18	1	1	0	0	28	FM	Road
3	KEP		858	973		998	136	454		3	3	0	0	55		
		Kep	266	307	Wewak UC2	285	40	130	06.02.18	1	1	0	0	29	FM	Road
		Turubu Village	298	348	Wewak UC2	371	46	162	06.02.18	1	1	0	0	10	FM	Road
		Balik/Kep 2	294	317	Wewak UC2	342	50	162	06.02.18	1	1	0	0	16	FM	Road
4	SUANAM		365	398		361	75	188		2	2	0	0	22		
		Munjum	166	178	Wewak UC2	153	27	80	06.02.18	1	1	0	0	11	FM	Road
		Suanum	198	220	Wewak UC2	208	48	108	06.02.18	1	1	0	0	11	FM	Road
5	SAMAP		550	402		605	94	272		2	2	0	0	11		
		Samap 1	353	319	Wewak UC2	346	50	158	14.02.18	1	1	0	0	6	FM	Boat
		Samap 2	197	83	Wewak UC2	259	44	114	14.02.18	1	1	0	0	5	FM	Boat
6	IBAB		499	588		763	102	364		3	3	0	0	76		
		Wandomin	160	184	Tumurau HC	281	31	137	05.12.17	1	1	0	0	6		Road
		Ibab	215	255	Tumurau HC	327	50	159	05.12.17	1	1	0	0	49	FM	Road
		Wobu	124	149	Tumurau HC	155	21	68	05.12.17	1	1	0	0	21	FM	Road
7	TRING		493	543		471	80	217		2	2	0	0	54		
		Tring (Tiling)	373	363	Tumurau HC	325	56	152	05.12.17	1	1	0	0	37	FM	Road
		Wau 1&2	119	180	Tumurau HC	146	24	65	05.12.17	1	1	0	0	17	FM	Road
8	YAUGIBA		698	775		679	135	399		4	2	0	0	98		
		Kamasau	286	318	Tumurau HC	390	66	255	05.12.17	1	1	0	0	33	FM	Road
		Yaugiba	293	269	Tumurau HC	289	69	144	05.12.17	1	1	0	0	65	FM	Road
		Morai	81	142	Tumurau HC					1						Included under Kamasau
		Bajiman C/Sch	39	46	Tumurau HC					1						Included under Yaugiba
9	NUMAREP		420	526		591	104	274		2	2	0	0	92		
		Numarep 1	288	307	Tumurau HC	374	60	172	08.12.17	1	1	0	0	52	FM	Road
		Numarep 2	133	219	Tumurau HC	217	44	102	08.12.17	1	1	0	0	40	FM	Road
10	KINYARE		343	331		883	175	419		4	4	2	0	31		
		Kinyare	172	151	Tumurau HC	167	37	80	06.12.17	1	1	0	0	15		Road
		Sering	172	179	Tumurau HC	136	31	71	06.12.17	1	1	0	0	13	FM	Road
		Mavit		NEW	Tumurau HC	301	50	140	06.12.17	1	1	1	0	3	FM	New Village
		Kumange		NEW	Tumurau HC	279	57	128	06.12.17	1	1	1	0	0	FM	New Village
11	KANDAI		710	874		848	122	394		0	3	1	0	7		
		Dagawit	279	439	Tumurau HC	383	65	177	08.12.17	1	0	0	0	0		Road
		Kandai	252	219	Tumurau HC	368	41	170	08.12.17	1	0	0	0	0		Road
		Waibap	178	217	Tumurau HC	97	16	47	08.12.17	1	1	0	0	7		Road
12	MUNDAGAI		538	501		654	108	301		0	3	3	0	0	87	
		Hariegen	175	169	Tumurau HC	213	30	100	09.12.17	1	1	0	0	30	FM	Road
		Kaupari	35	23	Tumurau HC	50	12	21	09.12.17	1	1	0	0	0	FM	Road
		Mundangai	328	308	Tumurau HC	391	66	180	09.12.17	1	1	0	0	57	FM	Road
13	WAWAT 1		587	521		602	112	280		0	4	3	0	0	52	
		Wawat 1	165	116	Tumurau HC	181	31	86	08.12.17	1	1	0	0	7	FM	Road
		Wawat 2	160	210	Tumurau HC	223	49	108	08.12.17	1	1	0	0	16	FM	Road
		Wangin	126	128	Tumurau HC	198	32	86	08.12.17	1	1	0	0	29	FM	Road
		Tuaringe	136	66	Tumurau HC					1						Included under Wangin
14	YAMBAN		691	785		674	156	343		1	1	0	0	130		
		Yamban	691	785	Tumurau HC	674	156	343	07.12.17	1	1	0	0	130		Road
15	MAMBE		521	511		523	102	253		3	1	0	0	80		
		Tumeru 1	146	101	Tumurau HC	90	20	45	07.12.17	1	0	0	0	15		Road
		Tumeru 2	106	111	Tumurau HC	113	23	55	07.12.17	1	0	0	0	13		Road
		Manbe	269	300	Tumurau HC	320	59	153	07.12.17	1	1	0	0	52		Road
16	BUNGAIN		779	780		688	99	334		1	1	0	0	26		
		Bugain	779	780	Wewak UC2	688	99	334	06.02.18	1	1	0	0	26	FM	Road
17	SINAMBLAI 1		737	793		792	144	367		3	1	0	0	39		
		Sinamblai 1	269	266	Tumurau HC	220	46	111	05.12.17	1	1	0	0	39		Road
		Sinamblai 2	183	184	Tumurau HC	229	47	107	09.12.17	1	0	0	0	0		Road
		Taul	284	343	Tumurau HC	343	51	149	09.12.17	1	0	0	0	0		Road
18	MANUWARA		923	958		1,006	187	466		3	3	0	0	90		
		Manuwara	499	460	Tumurau HC	466	97	216	07.12.17	1	1	0	0	0	FM	Road
		Parua	156	195	Tumurau HC	183	33	84	07.12.17	1	1	0	0	33	FM	Road
		Samowia	267	304	Tumurau HC	357	57	166	07.12.17	1	1	0	0	57		Road
19	SIR		372	434		414	76	212		3	3	1	0	16		
		Sir	140	107	Wewak UC2	118	20	58	14.02.18	1	1	0	0	1	FM	Road
		Daden	123	184	Wewak UC2	141	27	80	14.02.18	1	1	0	0	3	FM	Road
		Sikan	109	144	Wewak UC2	155	29	74	14.02.18	1	1	1	0	12	FM	Road
20	PUTANDA		634	323		342	64	164		3	2	0	0	10		
		Putanda	348	0	Tumurau HC	125	24	100	06.12.17	1	1	0	0	0	FM	Road
		Numbingo	138	127	Tumurau HC					1						
		Yanduwek	148	196	Tumurau HC	217	40	64	06.12.17	1	1	0	0	10	FM	Road
21	PARPUR		432	505		371	63	170		2	2	0	0	29		
		Parpur	230	284	Tumurau HC	216	36	98	09.12.17	1	1	0	0	16	FM	Road
		Jumur	202	221	Tumurau HC	155	27	72	09.12.17	1	1	0	0	13	FM	Road
			0	0												
WEWAK ISLANDS RURAL			14,601	13,647		13,257	2,315	6,483		60	32	5	0	522	59	
1	BIEM 1		937	663		650	119	326		1	1	0	0	26		
		Kulkirap	937	663	Koil HC	650	119	326	04.12.17	1	1	0	0	26	NBC Madang	Boat
2	BIEM 2															

LLG	WARD	VILLAGE	Estimated 2017 Data Based On 2000 Census	Estimated 2017 Data Based On 2014 Data	Health Centre	Population Surveyed	House Holds Surveyed	Nets Issued	Date Of Distribution	Village	Digicel	Bmobile	Citifon	Houses With Radios	Radio Networks	Comment
6	WEI		114	138		149	25	74		1	1	0	0	1		
		Wei	114	138	Koil HC	149	25	74	06.12.17	1	1	0	0	1	IBC East Sep	Boat
7	KOIL 1		318	249		257	42	129		1	0	0	0	6		
		Tob	318	249	Koil HC	257	42	129	30.11.17	1	0	0	0	6	IBC East Sep	Boat
8	KOIL 2		900	406		395	59	199		1	0	0	0	15		
		Waur	900	406	Koil HC	395	59	199	30.11.17	1	0	0	0	15	IBC East Sep	Boat
9	VOKIO 1		748	745		734	112	360		11	0	0	0	17		
		New Camp	62	35	Koil HC	20	3	9	07.12.17	1	0	0	0	1	IBC East Sep	Boat
		Bariat	81	142	Koil HC	125	17	63	07.12.17	1	0	0	0	2	IBC East Sep	Boat
		Job	94	41	Koil HC	43	8	21	07.12.17	1	0	0	0	3	IBC East Sep	Boat
		Dab	87	94	Koil HC	125	20	60	07.12.17	1	0	0	0	3	IBC East Sep	Boat
		Kinaba	15	42	Koil HC	57	8	27	07.12.17	1	0	0	0	0	IBC East Sep	Boat
		Morok	103	65	Koil HC	53	8	26	07.12.17	1	0	0	0	0	IBC East Sep	Boat
		Falala	79	62	Koil HC	57	8	28	07.12.17	1	0	0	0	0	IBC East Sep	Boat
		Wuokipror	91	84	Koil HC	93	14	45	07.12.17	1	0	0	0	3	IBC East Sep	Boat
		Urao	42	57	Koil HC	54	6	27	07.12.17	1	0	0	0	3	IBC East Sep	Boat
		Juk	87	83	Koil HC	82	15	41	07.12.17	1	0	0	0	2	IBC East Sep	Boat
		Street Gabriel c/s	7	40	Koil HC	25	5	13	07.12.17	1	0	0	0	0	IBC East Sep	Boat
10	VOKIO 2		765	720		718	109	357		8	0	0	0	26		
		Bajor	156	117	Koil HC	110	16	55	07.12.17	1	0	0	0	4	IBC East Sep	Boat
		Gaa	141	144	Koil HC	144	18	73	07.12.17	1	0	0	0	14	IBC East Sep	Boat
		Koblik	62	59	Koil HC	63	10	31	07.12.17	1	0	0	0	3	IBC East Sep	Boat
		Gol	148	135	Koil HC	137	26	67	07.12.17	1	0	0	0	3	IBC East Sep	Boat
		Maluk	44	72	Koil HC	73	11	36	07.12.17	1	0	0	0	0	IBC East Sep	Boat
		Kananabele	82	48	Koil HC	50	8	25	07.12.17	1	0	0	0	1	IBC East Sep	Boat
		Waur	42	70	Koil HC	67	10	33	07.12.17	1	0	0	0	1	IBC East Sep	Boat
		Gonami	89	76	Koil HC	74	10	37	07.12.17	1	0	0	0	0	IBC East Sep	Boat
11	KORAGUR 1		182	310		250	50	121		1	0	0	0	9		
		Baru	182	310	Kairiru SHC	250	50	121	06.12.17	1	0	0	0	9	Radio Wewa	Boat
12	KORAGUR 2		679	269		317	68	160		1	0	0	0	4		
		Koragur	679	269	Kairiru SHC	317	68	160	06.12.17	1	0	0	0	4	Radio Wewa	Boat
13	SHAGUR		585	565		535	99	266		2	0	0	0	2		
		Shagur	422	282	Kairiru SHC	262	50	125	06.12.17	1	0	0	0	2	Radio Wewa	Boat
		Gou	163	283	Kairiru SHC	273	49	141	07.12.17	1	0	0	0	0	Radio Wewa	Boat
14	RUMLAL		679	690		751	136	356		4	3	0	0	22		
		Rumlal	232	224	Kairiru SHC	193	36	91	06.12.17	1	0	0	0	0	Radio Wewa	Boat
		Surai	210	249	Kairiru SHC	188	36	85	06.12.17	1	1	0	0	7	Radio Wewa	Boat
		Shawir	104	91	Kairiru SHC	139	27	69	06.12.17	1	1	0	0	11	Radio Wewa	Boat
		Buruan	133	126	Kairiru SHC	231	37	111	06.12.17	1	1	0	0	4	Radio Wewa	Boat
15	SERESING		868	986		996	142	467		5	5	0	0	52		
		Chem	200	281	Kairiru SHC	289	44	141	06.12.17	1	1	0	0	0	Radio Wewa	Boat
		Seresing	257	298	Kairiru SHC	311	44	139	06.12.17	1	1	0	0	19	Radio Wewa	Boat
		Takar	128	157	Kairiru SHC	134	17	67	06.12.17	1	1	0	0	4	Radio Wewa	Boat
		Street Xaviers	210	161	Kairiru SHC	178	28	82	06.12.17	1	1	0	0	25	Radio Wewa	Boat
		Street Johns	72	88	Kairiru SHC	84	9	38	06.12.17	1	1	0	0	4	Radio Wewa	Boat
16	BRAUNIEK		1,081	1,076		1,063	198	518		5	5	0	0	60		
		Yawik	283	254	Kairiru SHC	262	48	125	06.12.17	1	1	0	0	6	Radio Wewa	Boat
		Yuwun	219	223	Kairiru SHC	206	39	97	06.12.17	1	1	0	0	17	Radio Wewa	Boat
		Brauniek	341	338	Kairiru SHC	354	62	175	06.12.17	1	1	0	0	18	Radio Wewa	Boat
		Cos	69	0	Kairiru SHC	84	17	36	06.12.17	1	1	0	0	1	Radio Wewa	Boat
		Sabar	170	260	Kairiru SHC	157	32	85	06.12.17	1	1	0	0	18	Radio Wewa	Boat
17	MUSHU 1		1,186	1,278		1,195	182	571		5	4	0	0	50		
		Mushu 1	612	668	Kairiru SHC	676	93	331	05.12.17	1	1	0	0	23	Radio Wewa	Boat
		Subabru	269	217	Kairiru SHC	224	34	107	05.12.17	1	1	0	0	18	Radio Wewa	Boat
		Bausum	155	222	Kairiru SHC	209	39	94	05.12.17	1	1	0	0	4	Radio Wewa	Boat
		Worak	140	144	Kairiru SHC	86	16	39	05.12.17	1	1	0	0	5	Radio Wewa	Boat
		Mushu C/Sch	10	28	Kairiru SHC					1						Included in Mushulbai
18	MUSHU 2		1,206	1,907		1,666	281	791		5	5	1	0	117		
		Bam	313	202	Kairiru SHC	34	16	15	05.12.17	1	1	0	0	3	Radio Wewa	Boat
		Mushu 2	600	496	Kairiru SHC	394	61	191	05.12.17	1	1	0	0	22	Radio Wewa	Boat
		Mushulbai	190	485	Kairiru SHC	615	100	288	05.12.17	1	1	0	0	48	Radio Wewa	Boat
		Failau	103	172	Kairiru SHC	142	25	67	05.12.17	1	1	0	0	24	Radio Wewa	Boat
		Sup	0	551	Kairiru SHC	481	79	230	05.12.17	1	1	1	0	20	Radio Wewa	Boat
19	WALIS 1		674	567		534	105	277		1	1	1	0	19		
		kombi	674	567	Boikan HC	534	105	277	01.12.17	1	1	1	0	19	Radio Wewa	Kairiru HC Catchment
20	WALIS 2		651	505		499	105	248		1	1	1	0	21		
		Kapilai	651	505	Boikan HC	499	105	248	01.12.17	1	1	1	0	21	Radio Wewa	Kairiru HC Catchment
21	TARAWAI		432	354		311	74	172		2	2	2	0	13		
		Satem	217	193	Boikan HC	175	40	95	01.12.17	1	1	1	0	12	Radio Wewa	Kairiru HC Catchment
		Sumatem	215	160	Boikan HC	136	34	77	01.12.17	1	1	1	0	1	Radio Wewa	Kairiru HC Catchment
			0	0												
WEWAK RURAL			18,620	21,899		25,445	4,615	12,436		57	54	32	0	2,860	54	
1	KAMBOGORA		493	521		549	100	269		1	1	1	0	40		
		Kambogora	493	521	Passam SHC	549	100	269	02.12.17	1	1	1	0	40	IBC WEWA	Road
2	PASSAM 2		651	777		770	184	377		3	3	3	0	40		
		Soinumbo	271	417	Passam SHC	387	94	190	02.12.17	1	1	1	0	3	IBC WEWA	Road
		Poliere	246	271	Passam SHC	119	40	58	02.12.17	1	1	1	0	16	IBC WEWA	Road
		Kumau	135	90	Passam SHC	264	50	129	02.12.17	1	1	1	0	21	IBC WEWA	Road
3	PASSAM 1		1,180	1,087		994	200	487		2	1	1	0	60		
		Passam 1	627	710	Passam SHC	994	200	487	02.12.17	1	1	1	0	60	IBC WEWA	Road
		Kavanumbo	553	377	Passam SHC					1						Included Under Passam 1
4	PALIAMA		595	647		579	114	283		1	1	1	0	90		
		Paliama	595	647	Passam SHC	579	114	283	02.12.10	1	1	1	0	90	IBC WEWA	Road
5	PASSAM 3		235	286		240	55	117		1	1	1	0	30		
		Passam 3	235	286	Passam SHC	240	55	117	02.12.17	1	1	1	0	30	IBC WEWA	Road
6	MARIK		185	298		321	76	157		1	1	1	0	31		
		Marik	185	298	Passam SHC	321	76	157	03.12.17	1	1	1	0	31	IBC WEWA	Road
7	KREER		203													

LLG	WARD	VILLAGE	Estimated 2017 Data Based On 2000 Census	Estimated 2017 Data Based On 2014 Data	Health Centre	Population Surveyed	House Holds Surveyed	Nets Issued	Date Of Distribution	Village	Digicel	Emobile	Citifon	Houses With Radios	Radio Networks	Comment
		Hambraure	111	196	Passam SHC	169	40	83	04.12.17	1	1	1	0	11	BC WEWA	Road
12	MANGARARA		320	340		418	68	200		1	1	0	0	62		
		Mangarara	320	340	Wewak UC3	418	68	200	08.02.18	1	1	0	0	62	FM	Road
13	YARAPI		758	832		768	141	379		3	3	0	0	25		
		Yarapi	294	271	Wewak UC3	501	90	245	08.02.18	1	1	0	0	15	FM	Road
		Kunai	314	407	Wewak UC3	193	39	101	08.02.18	1	1	0	0	8	FM	Road
		Singani	150	155	Wewak UC3	74	12	33	08.02.18	1	1	0	0	2	FM	Road
14	NUMOIKUM		410	552		403	100	197		1	1	1	0	18		
		Numoikum	410	552	Passam SHC	403	100	197	04.12.17	1	1	1	0	18	BC WEWA	3-4 Hr Trek
15	URINDOGUM		313	350		318	65	155		1	1	1	0	33		
		Urindogum	313	350	Passam SHC	318	65	155	04.12.17	1	1	1	0	33	BC WEWA	3 Hr Trek
16	PANGARIPMA		382	394		387	98	189		1	1	1	0	30		
		Pangaripma	382	394	Passam SHC	387	98	189	02.12.17	1	1	1	0	30	BC WEWA	Road
17	WEWAK TOWN		11,391	13,370		16,820	2,898	8,204		35	33	18	0	2,019		
		Brandi	631	200	Wewak UC3	623	86	278	07.02.18	1	1	0	0	5	FM	Road
		Yawasoro Gvt/cp	419	0	Wewak UC3	780	149	379	09.02.18	1	1	0	0	82	NBC	Road
		Yarapos H/Sch	72	0	Wewak UC3	88	19	41	08.02.18	1	1	0	0	11	FM	Road
		Koiken	419	1,051	Wewak UC3	770	129	379	12.02.18	1	1	1	0	100	FM	Road
		Sawarin	644	1,431	Wewak UC3	1,531	223	704	07.02.18	1	1	1	0	112	FM	Road
		Kremending	247	385	Wewak UC3	301	56	144	12.02.18	1	1	0	0	31	FM	Road
		Megar Yawasoro Settlement		NEW	Wewak UC3	1,069	183	501	10.02.18	1	1	0	0	430	NBC	
		Saure 1	425	470	Wewak UC3	388	88	197	10.02.18	1	1	0	0	31	NBC	Road
		Solongo Sett.	301	0	Wewak UC3	210	40	107	10.02.18	1	1	10	0	25	NBC	Road
		Mengar Sitt.basis	383	897	Wewak UC3	1,512	198	713	10.02.18	1	1	0	0	147	NBC	Road
		Wariman DPI	313	0	Wewak UC3	329	49	123	10.02.18	1	1	0	0	48	NBC	Road
		Yawasoro W/jnct	558	0	Wewak UC3					1						Included under Wom Junctn
		Tangara	333	0	Wewak UC3	273	50	139	09.02.18	1	1	0	0	16	NBC	Road
		Wom	642	661	Wewak UC3	678	118	345	09.02.18	1	1	0	0	42	NBC	Road
		Works Cmp.Sett.	393	118	Wewak UC3	281	36	138	12.02.18	1	1	0	0	23	FM	Road
		Yaramuru	220	234	Wewak UC3	211	48	123	09.02.18	1	1	0	0	15	NBC	Road
		Yavago	288	0	Wewak UC3					1						Same as Yawago
		Wingei	306	0	Wewak UC3	293	50	137	10.02.18	1	1	0	0	46	NBC	Road
		Wingwaiko	145	0	Wewak UC3	211	34	103	10.02.18	1	1	1	0	15	NBC	Road
		Saure 2	168	607	Wewak UC3	458	96	217	10.02.18	1	1	0	0	73	NBC	Road
		Mengar Village	299	483	Wewak UC3	600	100	281	10.02.18	1	1	1	0	90	NBC	Road
		Mengar Sitt kaindi	177	1,133	Wewak UC3	1,024	187	479	10.02.18	1	1	0	0	88	NBC	Road
		Yawasoro	873	0	Wewak UC3	653	100	325	09.02.18	1	1	0	0	65	NBC	Road
		Yawasoro Lease	1,043	1,122	Wewak UC3	1,674	316	903	09.02.18	1	1	0	0	207	NBC	Road
		Wom Jnctn Yawasoro Settlement	178	652	Wewak UC3	202	50	100	09.02.18	1	1	0	0	10	NBC	Road
		Yawago	251	319	Wewak UC3	84	16	41	09.02.18	1	1	0	0	15	NBC	Road
		Yawago2	0	197	Wewak UC3	86	13	37	09.02.18	1	1	0	0	12	NBC	Road
		Yawago3	0	276	Wewak UC3	51	12	24	09.02.18	1	1	0	0	1	NBC	Road
		Yawago4	0	115	Wewak UC3	256	48	133	09.02.18	1	1	0	0	19	NBC	Road
		Yawago5	0	324	Wewak UC3	235	50	129	09.02.18	1	1	0	0	1	NBC	Road
		Yarapos	545	520	Wewak UC3	668	100	313	08.02.18	1	1	0	0	85	FM	Road
		Perigem/Moem 2	210	285	Wewak UC3	237	50	114	12.02.18	1	1	1	0	47	FM	Road
		Moem 2		NEW	Wewak UC3	147	46	121	12.02.18	1	1	1	0	32	FM	
		Moem 1	552	984	Wewak UC3	523	96	257	12.02.18	1	1	1	0	40	FM	Road
		Nengar	356	905	Wewak UC3	374	62	179	12.02.18	1	1	1	0	55	FM	Road
			0	0												
WEWAK URBAN			34,064	32,542		35,029	5,001	17,124		74	37	37	0	1,997	37	
1		Ward 1	2,260	1,591		1,592	221	799		7	1	1	0	100		
		Wewak Hill	457	1,591	Wewak UC4	1,592	221	799	25.02.18	1	1	1	0	100	Radio ESP	Road
		Noresman Avenue	286	0	Wewak UC4					1						included under Wewak Hill
		Kenna V.C. Avenue	173	0	Wewak UC4					1						included under Wewak Hill
		Hill Street	462	0	Wewak UC4					1						included under Wewak Hill
		The Centre	182	0	Wewak UC4					1						included under Wewak Hill
		Memorial Drive	387	0	Wewak UC4					1						included under Wewak Hill
		Scenic Drive	313	0	Wewak UC4					1						included under Wewak Hill
2		Ward 2	2,300	1,892		2,427	292	1,123		8	4	4	0	284		
		Island Compound	313	1,892	Wewak UC4	243	30	114	01.03.18	1	1	1	0	30	Radio ESP	Road
		Dagua Road	146	0	Wewak UC4					1						included under Dagua road
		Dagua Road Section 11	168	0	Wewak UC4					1						included under Dagua road
		Mongnuil Compound	272	0	Wewak UC4	854	113	411	01.03.18	1	1	1	0	106	Radio ESP	Road
		Native labour cmpn	478	0	Wewak UC4					1						included under Dagua road
		Yo Settlement/Mangoro Compound	311	0	Wewak UC4					1						included under Dagua road
		Dump/Lumi Camp	419	0	Wewak UC4	544	50	234	01.03.18	1	1	1	0	50	Radio ESP	Road
		Dump/Island Compound	193	0	Wewak UC4	786	99	364	01.03.18	1	1	1	0	98	Radio ESP	Road
3		Ward 3	3,646	2,438		3,072	375	1,496		8	4	4	0	179		
		Sepik Timbers	462	2,438	Wewak UC4	895	131	435	01-02.03.18	1	1	1	0	129	Radio ESP	Road
		Sepik Timbers	518	0	Wewak UC4					1						Same as sepik timbers
		Saksak Compound	578	0	Wewak UC4	1,284	150	629	01-02.03.18	1	1	1	0		Radio ESP	Road
		Kamanabit Community School	296	0	Wewak UC4					1						included with Saksak compound
		Saksak Settlement	836	0	Wewak UC4					1						included with Saksak compound
		Manusara Settlement	417	0	Wewak UC4	386	44	194	01.03.18	1	1	1	0	0	Radio ESP	Road
		Mission Compound	372	0	Wewak UC4	507	50	238	01.03.18	1	1	1	0	50	Radio ESP	Road
		Wasard Camp and Niagiuro Camp	166	0	Wewak UC4					1						Included with Manusar
4		Ward 4	1,414	2,120		2,147	303	1,026		2	1	1	0	202		
		Mansau-Mapau YC Street	541	2,120	Wewak UC4	2,147	303	1,026	8-02/01.03.1	1	1	1	0	202	Radio ESP	Road
		Mapau Settlement	873	0	Wewak UC4					1						Included with Mansau
5		Ward 5	1,502	1,784		1,685	299	805		4	3	3	0	326		
		Koboibus Camp	138	1,784	Wewak UC4					1						Included with Kaindi T/c
		Kaindi Tchr College	397	0	Wewak UC4	330	50	155	02-03.03.18	1	1	1	0	42	Radio ESP	Road
		Kaindi Settlement	651	0	Wewak UC4	917	170	441	02-03.18	1	1	1	0	75	Radio ESP	Road
		Kaindi Kunai	316	0	Wewak UC4	438	79	209	02-03.03.18	1	1	1	0	209	Radio ESP	Road
6		Ward 6	1,016	829		1,045	153	527		3	1	1	0	0		
		Wirui Mission	340	829	Wewak UC4					1						Included in Kiuya
		Wirui Mission Settlement	378	0	Wewak UC4					1						Included in Kiuya

LLG	WARD	VILLAGE	Estimated 2017 Data Based On 2000 Census	Estimated 2017 Data Based On 2014 Data	Health Centre	Population Surveyed	House Holds Surveyed	Nets Issued	Date Of Distribution	Village	Digicel	Bmobile	Citifon	Houses With Radios	Radio Networks	Comment
9		Kuiya PTC	343	0	Wewak UC4					1						Included with National work
		Ward 9	2,857	2,249		2,162	314	1,040		5	1	1	0	0		
		Kreer Heights	580	2,249	Wewak UC4	2,162	314	1,040	25.02.18	1	1	1	0	0	Radio ESP	Road
		Kreer S 50, 52,48)	516	0	Wewak UC4					1						Included with Kreer heights
		Kreer Hght S: 54	412	0	Wewak UC4					1						Included with Kreer heights
10		Kreer Hght S: 49	582	0	Wewak UC4					1						Included with Kreer heights
		Kr 53,31,32,28,30	767	0	Wewak UC4					1						Included with Kreer heights
		Ward 10	3,340	3,160		2,865	427	1,389		3	3	3	0	222		
		Boram hosp.area	1,555	3,160	Wewak UC4	431	60	204	23-24.02.18	1	1	1	0	45	Radio ESP	Road
		Boram Rd Beach Front	393	0	Wewak UC4	636	97	312	23-24.02.18	1	1	1	0	94	Radio ESP	Road
11		Kreer Beach Settlement	1,391	0	Wewak UC4	1,798	270	873	23-24.02.18	1	1	1	0	83	Radio ESP	Road
		Ward 11	2,420	2,299		1,844	322	956		6	2	2	0	216		
		Brm DCA Airport	718	2,299	Wewak UC4					1						Included with boram bch settlement
		Boram Bch Settlement	141	0	Wewak UC4	1,541	259	786	22.02.18	1	1	1	0	154	Radio ESP	Road
		Korogogo-Kandega/Magon #2 Settlen	464	0	Wewak UC4					1						Included with Magon
12		Magom Village	283	0	Wewak UC4	303	63	170	22.02.18	1	1	1	0	62	Radio ESP	Road
		Magom Settlement	358	0	Wewak UC4					1						Included with Magom village
		Boram DCA Compound	456	0	Wewak UC4					1						Included with DCA Airport
		Ward 12	3,113	1,843		2,225	312	1,249		7	1	1	0	0		
		Moem B'cks "a" Matmat H'qtrs	368	1,843	Wewak UC4					1						
		Moem B'cks B Type 1 Quarters	800	0	Wewak UC4	2,225	312	1,249	03.03.18	1	1	1	0		Radio ESP	Road
		Moem B'cks C Type 2 Quarters	348	0	Wewak UC4					1						Included withB Quarters
		Moem B'cks D Type Quarters	246	0	Wewak UC4					1						Included withB Quarters
		Moem B'cks E Type Quarters	390	0	Wewak UC4					1						Included withB Quarters
		Moem B'cks "F"	385	0	Wewak UC4					1						Included withB Quarters
13		Moem B'cks "G" Officers	575	0	Wewak UC4					1						Included withB Quarters
		Ward 13	3,927	4,202		4,042	654	1,973		9	6	6	0	247		
		Niugo 1st/2nd/3rd Street	733	4,202	Wewak UC4	770	138	396	27.02.18	1	1	1	0	99	Radio ESP	Road
		Niugo 4th Street	257	0	Wewak UC4	85	14	39	27.02.18	1	1	1	0	2	Radio ESP	Road
		Niugo 8th Street	410	0	Wewak UC4	198	34	92	27.02.18	1	1	1	0	0	Radio ESP	Road
		Niugo 6th Street	531	0	Wewak UC4					1						Road
		Niugo 7th Street	306	0	Wewak UC4	301	50	157	27.02.18	1	1	1	0	0	Radio ESP	Road
		Niugo 10th Street	183	0	Wewak UC4					1						Road
		Suago/Tangugo	750	0	Wewak UC4	883	136	420	27.02.18	1	1	1	0		Radio ESP	Road
		Niugo Settlement	256	0	Wewak UC4					1						Road
14		Niugo	499	0	Wewak UC4	1,805	282	869	27.02.18	1	1	1	0	146	Radio ESP	Road
		Ward 14	2,015	1,625		1,765	257	855		4	4	4	0	17		
		CIS Boram	999	1,625	Wewak UC4	315	50	154	22.02.18	1	1	1	0	9	Radio ESP	Road
		Perigo Police Barracks	388	0	Wewak UC4	290	49	144	22.02.18	1	1	1	0	0	Radio ESP	Road
		DCA Compound	267	0	Wewak UC4	406	48	196	22.02.18	1	1	1	0	0	Radio ESP	Road
15		Perigo	360	0	Wewak UC4	754	110	361	22.08.18	1	1	1	0	8	Radio ESP	Road
		Ward 15	1,845	2,140		2,473	320	1,176		3	3	3	0	0		
		Windjammer	671	2,140	Wewak UC4					1	1	1	0		Radio ESP	Included with Meni village
		Meni Village	454	0	Wewak UC4	2,473	320	1,176	TBA	1	1	1	0		Radio ESP	Road
		Imbongs Imeni S'ment/Siao Kagra S'n	720	0	Wewak UC4					1	1	1	0		Radio ESP	Included with Meni village

ANNEX FOUR

EAST SEPIK PROVINCE
YANGORU SAUSSI DISTRICT POPULATION 2017
LLIN REPORT SUMMARY SHEET

LLG	WARD	VILLAGE	Estimated 2017 Data Based On 2000 Census	Estimated 2017 Data Based On 2014 Data	Health Centre	Population Surveyed	House Holds Surveyed	Nets Issued	Date Of Distribution	Village	Digicel	Bmobile	Citifon	Houses With Radios	Radio Networks	Comment	
YANGORU SAUSSI			75,111	75,111		73,755	14,945	36,949			183	182	0	0	2,758	181	
EAST YANGORU RURAL			23,450	22,887		22,464	4,223	10,839			49	49	0	0	755	48	
1	PACHEN \ KARAPIA		958	1,081		935	159	447			2	2	0	0	55		
	Karapia		526	597	Yangoru HC	537	88	257	17.11.17	1	1	0	0	5	NBC	Road	
	Pachen		432	484	Yangoru HC	398	71	190	17.11.17	1	1	0	0	50	NBC	Road	
2	YANGORU STATION		426	446		427	79	204			1	1	0	0	30		
	Yangoru Stn		426	446	Yangoru HC	427	79	204	17.11.17	1	1	0	0	30	NBC	Road	
3	NUMBOROUN		517	272		457	89	219			1	1	0	0	16		
	NUMBOROUN		517	272	Yangoru HC	457	89	219	18.11.17	1	1	0	0	16	NBC	Road	
4	BAIMURU		1,098	1,121		1,056	221	515			3	3	0	0	69		
	Hangererak		275	318	Yangoru HC	221	40	105	17.11.17	1	1	0	0	16	NBC	Road	
	Herengei		223	219	Yangoru HC	199	50	106	17.11.17	1	1	0	0	8	NBC	Road	
	Baimuru		600	584	Yangoru HC	636	131	304	17.11.17	1	1	0	0	45	NBC	Road	
5	BUKIENDUON		1,123	1,118		1,104	181	527			4	4	0	0	66		
	Bukienduon		471	331	Yangoru HC	453	74	216	16.11.17	1	1	0	0	46	NBC	Road	
	Saina		317	329	Yangoru HC	357	57	171	16.11.17	1	1	0	0	18	NBC	Road	
	Sausenduon		288	233	Yangoru HC	204	34	97	16.11.17	1	1	0	0	2	NBC	Road	
	Negrie Mission		47	224	Yangoru HC	90	16	43	16.11.17	1	1	0	0	0	NBC	Road	
6	MARAMBANJA		764	621		719	119	352			1	1	0	0	31		
	Maranbanja		764	621	Yangoru HC	719	119	352	16.11.17	1	1	0	0	31	NBC	Road	
7	SIMA		936	1,127		1,078	201	516			2	2	0	0	20		
	Hambley		220	255	Yangoru HC	218	43	105	15.11.17	1	1	0	0	4	NBC	Road	
	Sima		716	871	Yangoru HC	860	158	411	15.11.17	1	1	0	0	16	NBC	Road	
8	HOWI \ WAMAINA		797	993		973	194	468			3	3	0	0	55		
	Howi		203	254	Yangoru HC	304	70	147	17.11.17	1	1	0	0	30	NBC	Road	
	Wamaina		383	283	Yangoru HC	418	82	201	17.11.17	1	1	0	0	23	NBC	Road	
	Pangu		211	455	Yangoru HC	251	42	120	17.11.17	1	1	0	0	2		Road	
9	KUFA \ AMBOKON		1,134	911		777	155	372			2	2	0	0	11		
	Ambokon		738	394	Yangoru HC	349	61	167	18.11.17	1	1	0	0	0	NBC	Road	
	Kufar		396	517	Yangoru HC	428	94	205	18.11.17	1	1	0	0	11	NBC	Road	
10	SINIANGU \ MOMBUK		863	1,000		943	187	463			2	2	0	0	25		
	Mombuk		545	648	Yangoru HC	645	123	309	18.11.17	1	1	0	0	11	NBC	Road	
	Siniangu		317	353	Yangoru HC	298	64	154	18.11.17	1	1	0	0	14	NBC	Road	
11	WITUPEL		1,194	585		541	100	259			1	1	0	0	0		
	Witupe 1		1,194	585	Yangoru HC	541	100	259	14.11.17	1	1	0	0	0	NBC	Road	
12	KORO		988	926		992	170	474			2	2	0	0	0		
	kumbi		419	384	Yangoru HC	454	72	217	14.11.17	1	1	0	0	0	NBC	1day/trek	
	koro		569	543	Yangoru HC	538	98	257	14.11.17	1	1	0	0	0	NBC	Road	
13	MAKAMBU		856	1,086		959	179	459			2	2	0	0	0		
	Makambu		542	713	Yangoru HC	566	100	272	17.11.17	1	1	0	0	0	NBC	1day/trek	
	Pangeimit		314	373	Yangoru HC	393	79	187	17.11.17	1	1	0	0	0	NBC	1day/trek	
14	KINIAMBU		1,130	1,165		1,002	199	479			2	2	0	0	0		
	Kamatogu		374	343	Yangoru HC	383	70	183	17.11.17	1	1	0	0	0	NBC	1day/trek	
	Kiniambu		756	822	Yangoru HC	619	129	296	17.11.17	1	1	0	0	0	NBC	1day/trek	
15	HARIPMO \ 2 & 3		811	712		733	143	350			1	1	0	0	0		
	Haripmo		811	712	Yangoru HC	733	143	350	17.11.17	1	1	0	0	0	NBC	Road	
16	MEROHOMBI		757	741		811	148	392			2	2	0	0	23		
	Maringe		454	467	Yangoru HC	450	75	215	17.11.17	1	1	0	0	11	NBC	Road	
	Merohombi		303	274	Yangoru HC	361	73	177	17.11.17	1	1	0	0	12	NBC	Road	
17	KWAHUJIE		577	650		599	118	285			1	1	0	0	25		
	Kwahuie		577	650	Yangoru HC	599	118	285	18.11.17	1	1	0	0	25	NBC	Road	
18	HAGAMA		892	936		980	185	473			2	2	0	0	101		
	Hagama 1&2		650	669	Yangoru HC	757	149	367	16.11.17	1	1	0	0	89	NBC	Road	
	Numiesoli		242	268	Yangoru HC	223	36	106	16.11.17	1	1	0	0	12	NBC	Road	
19	SOLI		1,450	1,425		1,194	227	588			4	4	0	0	47		
	Ambosou		251	336	Yangoru HC	234	46	114	21.11.17	1	1	0	0	9	NBC	Road	
	Soli 1		377	296	Yangoru HC	410	79	197	21.11.17	1	1	0	0	17	NBC	Road	
	Waragembe		239	338	Yangoru HC	259	52	135	21.11.17	1	1	0	0	7	NBC	Road	
	Soli 2		583	454	Yangoru HC	291	50	142	21.11.17	1	1	0	0	14	NBC	Road	
20	PARINA		1,317	1,471		1,377	288	683			2	2	0	0	44		
	Parina		575	690	Yangoru HC	824	173	409	20.11.17	1	1	0	0	22	NBC	Road	
	Waramuru		742	782	Yangoru HC	553	115	274	20.11.17	1	1	0	0	22	NBC	Road	
21	AMBUKENJA		723	714		661	110	316			1	1	0	0	38		
	Ambukanja		723	714	Yangoru HC	661	110	316	20.11.17	1	1	0	0	38	NBC	Road	
22	KIARIVU		685	711		827	163	402			1	1	0	0	10		
	Kiarivu		685	711	Yangoru HC	827	163	402	20.11.17	1	1	0	0	10	NBC	Road	
23	KWORABRI		1,045	916		869	164	422			2	2	0	0	13		
	Kworabri 1		687	256	Yangoru HC	244	50	119	13.11.17	1	1	0	0	5	NBC	Road	
	Kworabri 2		358	660	Yangoru HC	625	114	303	13.11.17	1	1	0	0	8	NBC	Road	
24	SIMBOMIE \ SENGRI 494		776	548		708	100	338			1	1	0	0	26		
	Simbomie/Sengri		776	548	Yangoru HC	708	100	338	18.11.17	1	1	0	0	26	NBC	Road	
25	YEKIMBOLYE 2		652	618		701	133	340			2	2	0	0	49		
	Inagombi		259	174	Yangoru HC	230	46	111	16.11.17	1	1	0	0	17	NBC	Road	
	Yekimbolye		393	444	Yangoru HC	471	87	229	16.11.17	1	1	0	0	32	NBC	Road	
26	KAMANJAN		399	464		470	88	225			1	1	0	0	1		
	Kamanjan		399	464	Yangoru HC	470	88	225	14.11.17	1	1	0	0	1	NBC	Road	
27	WITUPE 2		583	528		571	123	271			1	1	0	0	0		
	Witupe 2		583	528	Yangoru HC	571	123	271	14.11.17	1	1	0	0	0	NBC	Road	
				0													
NUMBOR RURAL			18,078	18,219		17,235	3,700	8,963			49	49	0	0	968	49	
1	KININIEN		1,262	1,038		970	193	486			4	4	0	0	22		
	Kininien		372	220	Kubalia HC	190	40	96	24.11.17	1	1	0	0	5	NBC	Road	
	Sufonduo		361	321	Kubalia HC	318	60	157	24.11.17	1	1	0	0	4	NBC	Road	
	Kusambuk Pri.Sch		27	54	Kubalia HC	83	19	43	24.11.17	1	1	0	0	3	NBC	Road	
	Yekembole 1		501	443	Kubalia HC	379	74	190	24.11.17	1							

LLG	WARD	VILLAGE	Estimated 2017 Data Based On 2000 Census	Estimated 2017 Data Based On 2014 Data	Health Centre	Population Surveyed	House Holds Surveyed	Nets Issued	Date Of Distribution	Village	Digicel	Bmobile	Citfon	Houses With Radios	Radio Networks	Comment
		Huragore	149	155	Sassoya HC	102	28	57	04-05.12.17	1	1	0	0	8	Radio Wewa	All nets issued /Road
		kininumbogu	262	265	Sassoya HC	230	39	118	04-05.12.17	1	1	0	0	25	Radio Wewa	All nets issued /Road
		Sasse Numbogu	363	270	Sassoya HC	294	66	160	06-07.12.17	1	1	0	0	12	Radio Wewa	All nets issued /Road
5	NYAGANDOGUM		916	931		868	212	460		3	3	0	0	55		
		Nyagandogum 1	148	176	Sassoya HC	150	45	88	04-05.12.17	1	1	0	0	4	Radio Wewa	All nets issued /Road
		Nyagandogum 2	539	507	Sassoya HC	406	100	217	04-05.12.17	1	1	0	0	15	Radio Wewa	All nets issued /Road
		Nyagandogum 3	229	248	Sassoya HC	312	67	155	04-05.12.17	1	1	0	0	36	Radio Wewa	All nets issued /Road
6	NEIMU		911	874		881	169	448		1	1	0	0	0		
		Neimu	911	874	Sassoya HC	881	169	448	06.12.17	1	1	0	0	0	Radio Wewa	All nets issued /Road
7	NAHOMBI		479	590		534	99	254		1	1	0	0	66		
		Niahombi	479	590	Sassoya HC	534	99	254	06.12.17	1	1	0	0	66	Radio Wewa	All nets issued /Road
8	MUSUHAGEN		379	453		451	107	223		1	1	0	0	0		
		Mushagen	379	453	Sassoya HC	451	107	223	06.12.17	1	1	0	0	0	Radio Wewa	All nets issued /Road
9	WALEMBA		435	511		370	91	190		1	1	0	0	50		
		Walembe	435	511	Sassoya HC	370	91	190	06.12.17	1	1	0	0	50	Radio Wewa	All nets issued /Road
10	NUMBOGU		588	673		805	134	400		3	3	0	0	41		
		Hariegen	126	196	Sassoya HC	214	39	112	06.12.17	1	1	0	0	37	Radio Wewa	All nets issued /Road
		Numbogu	459	478	Sassoya HC	543	80	264	06.12.17	1	1	0	0	0	Radio Wewa	All nets issued /Road
		Nindinumbo C/Sch	3	0	Sassoya HC	48	15	24	04-05.12.17	1	1	0	0	4	Radio Wewa	All nets issued /Road
11	ABAWIA		1,004	1,014		895	168	444		1	1	0	0	26		
		Abawia	1,004	1,014	Sassoya HC	895	168	444	06-07.12.17	1	1	0	0	26	Radio Wewa	All nets issued /Road
12	HAMBUKE		1,287	1,250		1,081	233	550		3	3	0	0	8		
		Hambuke 1	742	305	Sassoya HC	446	99	221	06-07.12.17	1	1	0	0	0	Radio Wewa	All nets issued /Road
		Hambuke 2	539	496	Sassoya HC	421	84	216	06-07.12.17	1	1	0	0	8	Radio Wewa	All nets issued /Road
		Hambuke Com. Sch	6	449	Sassoya HC	214	50	113	06-07.12.17	1	1	0	0	0	Radio Wewa	All nets issued /Road
13	HANIAK		886	754		813	189	434		3	3	0	0	49		
		Haniak 1	291	754	Sassoya HC	619	139	323	05.12.17	1	1	0	0	33	Radio Wewa	All nets issued /Road
		Basik pngbc	38	0	Sassoya HC					1	1	0	0	0	Radio Wewa	Included under Haniak 1
		Haniak 2	558	0	Sassoya HC	194	50	111	05.12.17	1	1	0	0	16	Radio Wewa	All nets issued /Road
14	NIUMINDOGUM		1,042	807		890	199	452		1	1	0	0	60		
		Niumindogum	1,042	807	Sassoya HC	890	199	452	05.12.17	1	1	0	0	60	Radio Wewa	All nets issued /Road
15	NANGUMARUM		891	895		860	199	454		1	1	0	0	26		
		Nangumarum	891	895	Sassoya HC	860	199	454	05.12.17	1	1	0	0	26	Radio Wewa	All nets issued /Road
16	TANGORI 1		709	846		711	162	367		3	3	0	0	48		
		Tangori 1	418	542	Sassoya HC	447	93	225	08.12.17	1	1	0	0	48	Radio Wewa	All nets issued /Road
		Tangori Chambers	20	0	Sassoya HC	85	15	41	08.12.17	1	1	0	0	0	Radio Wewa	All nets issued /Road
		Waninkuikom	270	304	Sassoya HC	179	54	101	08.12.17	1	1	0	0	0	Radio Wewa	All nets issued /Road
17	SASSOYA		613	663		787	150	416		2	2	0	0	60		
		Sassoya	548	553	Sassoya HC	552	100	284	05.12.17	1	1	0	0	48	Radio Wewa	All nets issued /Road
		Sassoya Mission	64	111	Sassoya HC	235	50	132	05.12.17	1	1	0	0	12	Radio Wewa	All nets issued /Road
18	TANGORI 2		452	436		375	89	199		2	2	0	0	4		
		Handrandogum	225	237	Sassoya HC	148	39	80	08.12.17	1	1	0	0	4	Radio Wewa	All nets issued /Road
		Tangori 2	228	199	Sassoya HC	227	50	119	08.12.17	1	1	0	0	0	Radio Wewa	All nets issued /Road
19	PAMBANIENG		856	798		765	169	418		2	2	0	0	71		
		kuiakom	426	360	Sassoya HC	381	70	199	08-09.12.17	1	1	0	0	27	Radio Wewa	All nets issued /Road
		Pambanieng	430	438	Sassoya HC	384	99	219	08-09.12.17	1	1	0	0	44	Radio Wewa	All nets issued /Road
20	HUARIPOGUM		699	862		690	143	366		2	2	0	0	40		
		Huariipogum	390	421	Sassoya HC	373	82	199	06.12.17	1	1	0	0	40	Radio Wewa	All nets issued /Road
		Koiruo	310	441	Sassoya HC	317	61	167	06.12.17	1	1	0	0	0	Radio Wewa	All nets issued /Road
21	NUNGORI		646	742		742	135	370		2	2	0	0	28		
		Nungori 1	204	281	Sassoya HC	306	42	151	06.12.17	1	1	0	0	28	Radio Wewa	All nets issued /Road
		Nungori 2	441	461	Sassoya HC	436	93	219	08.12.17	1	1	0	0	0	Radio Wewa	All nets issued /Road
22	PARA		756	955		844	215	465		4	4	0	0	97		
		Handra	346	528	Sassoya HC	265	83	141	08.12.17	1	1	0	0	33	Radio Wewa	All nets issued /Road
		Handarahu	156	164	Sassoya HC	127	32	69	06-07.12.17	1	1	0	0	1	Radio Wewa	All nets issued /Road
		Para	229	263	Sassoya HC	305	61	174	06-07.12.17	1	1	0	0	35	Radio Wewa	All nets issued /Road
		Handra Com. Sch	25	0	Sassoya HC	147	39	81	08.12.17	1	1	0	0	28	Radio Wewa	All nets issued /Road
23	PAPAROM		913	1,044		897	186	485		4	4	0	0	82		
		Paparom 1	363	284	Sassoya HC	246	49	138	08.12.17	1	1	0	0	17	Radio Wewa	All nets issued /Road
		Paparom 2	284	284	Sassoya HC	209	50	114	08.12.17	1	1	0	0	36	Radio Wewa	All nets issued /Road
		Paparom 3	266	258	Sassoya HC	265	49	136	08.12.17	1	1	0	0	3	Radio Wewa	All nets issued /Road
		Paparom 4	0	218	Sassoya HC	177	38	97	08.12.17	1	1	0	0	26	Radio Wewa	All nets issued /Road
SAUSSO RURAL			13,825	14,547		14,353	3,011	7,109		43	42	0	0	927	42	
1	URIEGEMBI		756	615		578	104	290		1	1	0	0	33		
		Uriegembi	756	615	Marinumbo AP	578	104	290	02.12.17	1	1	0	0	33	Radio Wewa	All nets issued /Road
2	JAPARAKA		701	708		660	150	343		1	1	0	0	66		
		Japaraka	701	708	Marinumbo AP	660	150	343	03.12.17	1	1	0	0	66	Radio Wewa	All nets issued /Road
3	YARI NUNGAWA		275	363		388	66	191		2	2	0	0	17		
		Yari	150	150	Kubalia HC2	174	29	83	16.11.17	1	1	0	0	0	R. Wewak	Road
		Yari/Nungawa	275	212	Kubalia HC2	214	37	108	16.11.17	1	1	0	0	17	FM	Road
4	YUMUNGU		589	570		634	135	310		1	1	0	0	13		
		Yumungu	589	570	Kubalia HC2	634	135	310	17.11.17	1	1	0	0	13	R. Wewak	Road
5	TUONUMBU		1,276	1,226		1,193	261	588		2	2	0	0	70		
		Tuanombu	1,098	996	Kubalia HC2	921	215	453	19.11.17	1	1	0	0	58	FM, 98.5, N	Road
		Kubalia stn	178	230	Kubalia HC2	272	46	135	19.11.17	1	1	0	0	12	NBC Wewa	Vicinity
6	MUNJI 1		1,351	1,035		1,074	229	544		2	2	0	0	35		
		Munji 1	707	512	Kubalia HC2	543	119	283	19.11.17	1	1	0	0	29	Wewak,FM	Road
		Munji 2	644	523	Kubalia HC2	531	110	261	19.11.17	1	1	0	0	6	Wewak,FM	Road
7	SUANDOGUM		1,042	1,135		1,117	234	546		2	2	0	0	24		
		Suandogum	731	724	Kubalia HC2	748	148	367	19.11.17	1	1	0	0	14	Wewak,93	Road
		Mapringa	311	411	Kubalia HC2	369	86	179	19.11.17	1	1	0	0	10	5. FM,93 F	Road
8	ROFUNDOGUM		773	865		847	172	403		2	2	0	0	146		
		Rofundogum	723	865	Kubalia HC2	799	163	379	19.11.17	1	1	Yes	0	73	Wewak, 93	Road
		Turingi Com.Sch	50	0	Kubalia HC2	48	9	24	19.11.17	1	1	Yes	0	73	Wewak, 93	Road
9	MINDOGUM		911	1,012		1,206	249	586		4	4	0	0</			

LLG	WARD	VILLAGE	Estimated 2017 Data Based On 2000 Census	Estimated 2017 Data Based On 2014 Data	Health Centre	Population Surveyed	House Holds Surveyed	Nets Issued	Date Of Distribution	Village	Digicel	Bmobile	Citfon	Houses With Radios	Radio Networks	Comment	
		Weriman	179	184	Kubalia HC2	160	50	79	18.11.17	1	1	0	0	39	95 FM	1 Day Trek	
		Sotange	75	121	Kubalia HC2	98	27	48	18.11.17	1	1	0	0	10	R. ESP	1 Day Trek	
12	BARARAT		580	524		499	103	242		1	1	0	0	39			
		Bararat	580	524	Kubalia HC2	499	103	242	18.11.17	1	1	0	0	39	93 FM.	Road	
13	PERINGA		350	525		438	72	212		1	1	0	0	34			
		Peringa	350	525	Kubalia HC2	438	72	212	18.11.17	1	1	0	0	34	R. ESP	Road	
14	WEMBI		374	472		527	100	258		1	1	0	0	29			
		Wambe	374	472	Kubalia HC2	527	100	258	17.11.17	1	1	Yes	0	29	90.7	Road	
15	RABIAWA		702	693		692	123	342		4	4	0	0	41			
		Rabiawa	440	455	Kubalia HC2	370	61	184	17.11.17	1	1	0	0	24	IBC, 90.5 F	Road	
		Madawa	239	238	Kubalia HC2	220	42	108	17.11.17	1	1	0	0	11	0.7 R. Wew	Road	
		Mongen Pri Sch.(New)		NEW	Kubalia HC2	33	6	16	20.11.17	1	1	0	0	0	0	NBC R. E.S	Road
		Nagam SDA	24	0	Kubalia HC2	69	14	34	20.11.17	1	1	0	0	6	BC, 90.5 F	Road	
16	KAMBARAKA		577	693		549	113	263		6	5	0	0	27			
		Kambaraka	193	279	Kubalia HC2	134	25	63	16.11.17	1	1	0	0	9	NBC E.S.	Road	
		koiru	137	415	Kubalia HC2	189	39	89	16.11.17	1	1	0	0	5	NBC R. E.S	Road	
		Amato	149	0	Kubalia HC2	123	27	60	16.11.17	1	1	0	0	9	NBC R. E.S	Road	
		koptuwe	53	0	Kubalia HC2	90	18	44	16.11.17	1	1	0	0	4	NBC R. E.S	Road	
		Taiwa	14	0	Kubalia HC2					1						Non Existant	
		Urimo com.Sch	30	0	Kubalia HC2	13	4	7	16.11.17	1	1	0	0	0	0		
17	WAMANGU		305	434		400	80	193		2	2	0	0	18			
		Wamangu	248	434	Kubalia HC2	313	60	150	16.11.17	1	1	0	0	0	R. E.S.P	Road	
		Kamabruka C/Sch	57	0	Kubalia HC2	87	20	43	16.11.17	1	1	0	0	18	R. E.S.P	Road	
18	JAPARAKA 1		589	717		690	147	370		1	1	0	0	71			
		Japaraka 1	589	717	Marinumbo AP	690	147	370	03.12.17	1	1	0	0	71	Radio Wewa	All nets issued /Road	
19	POROMBE		668	804		743	179	380		1	1	0	0	40			
		Porombe	668	804	Marinumbo AP	743	179	380	02.12.17	1	1	0	0	40	Radio Wewa	All nets issued /Road	
20	SEGORO		339	293		301	63	150		1	1	0	0	2			
		Segero	339	293	Kubalia HC2	301	63	150	19.11.17	1	1	0	0	2	93.1	Road	
21	KUSAUN		471	428		481	90	243		1	1	0	0	63			
		Kusaun	471	428	Marinumbo AP	481	90	243	01.12.17	1	1	0	0	63	Radio Wewa	All nets issued /Road	
				0													
WEST YANGORU RURAL			19,758	19,458		19,703	4,011	10,038		42	42	0	0	108	42		
1	KUMUN		839	1,063		905	190	478		2	2	0	0	0			
		Kumuon	485	738	Nasimingel HC	667	140	358	29.11.17	1	1	0	0	0	95.3FM	x3 bks/Road	
		Winjuon	353	325	Nasimingel HC	238	50	120	29.11.17	1	1	0	0	0	95.3FM	x1 bk/Road	
2	KUMBUHUN		1,068	1,268		987	197	512		3	3	0	0	0			
		Kumbuhun 1	342	319	Nasimingel HC	254	50	133	30.11.17	1	1	0	0	0	95.3FM	x1 bk/Road	
		Kumbuhun 2	405	413	Nasimingel HC	249	50	129	30.11.17	1	1	0	0	0	95.3FM	x1 bk/Road	
		Kumbuhun 3	320	535	Nasimingel HC	484	97	250	30.11.17	1	1	0	0	0	95.3FM	x2 bks/Road	
3	WIHUN (BOINAM)		742	463		316	52	178		2	2	0	0	0			
		Boinam	426	284	Nasimingel HC	176	31	96	30.11.17	1	1	0	0	0	95.3FM	x1 bk/1 Day Trek	
		Wihun	316	179	Nasimingel HC	140	21	82	30.11.17	1	1	0	0	0	95.3FM	x1 bk/1 Day Trek	
4	HIMBRU \ BUKI		701	722		751	142	355		2	2	0	0	0			
		Bukinara	341	390	Nasimingel HC	462	92	219	01.12.17	1	1	0	0	0	95.3FM	x2 bks/Road	
		Himbru	360	332	Nasimingel HC	289	50	136	30.11.17	1	1	0	0	0	95.3FM	x1 bk/Road	
5	ALISU		778	1,044		1,028	183	519		2	2	0	0	0			
		Alisu	303	631	Nasimingel HC	347	83	173	02.12.17	1	1	0	0	0	95.3FM	x2 bks/Road	
		Bubuami	474	412	Nasimingel HC	681	100	346	02.12.17	1	1	0	0	0	95.3FM	x2 bks/Road	
6	BONAHITAM		572	616		618	110	336		2	2	0	0	0			
		Belegel	220	273	Nasimingel HC	298	49	173	30.11.17	1	1	0	0	0	95.3FM	x1 bk/Road	
		Bonahitam	352	343	Nasimingel HC	320	61	163	30.11.17	1	1	0	0	0	95.3FM	x2 bks/Road	
7	KABOIBUS		834	1,117		871	159	459		1	1	0	0	0			
		Kaiboibus	834	1,117	Nasimingel HC	871	159	459	29.11.17	1	1	0	0	0	95.3FM	x4 bks/Road	
8	YABOMUNO		724	616		618	100	312		1	1	0	0	0			
		Yabomuno	724	616	Nasimingel HC	618	100	312	30.11.17	1	1	0	0	0	95.3FM	x2 bks/Road	
9	KRAGUMUN		555	524		551	133	293		1	1	0	0	0			
		Kragumun	555	524	Nasimingel HC	551	133	293	29.11.17	1	1	0	0	0	95.3FM	x3 bks/Road	
10	BUKITU		1,280	1,271		1,274	268	649		3	3	0	0	0			
		Bukitu	610	579	Nasimingel HC	542	125	276	01.12.17	1	1	0	0	0	95.3FM	x3 BKS/Road	
		Suanambu	470	452	Nasimingel HC	508	93	243	01.12.17	1	1	0	0	0	95.3FM	x2 bks/Road	
		Walgai	201	240	Nasimingel HC	224	50	130	01.12.17	1	1	0	0	0	95.3FM	x1 bk/Road	
11	WINGEI 1		704	821		692	158	344		1	1	0	0	0			
		Wingei 1	704	821	Nasimingel HC	692	158	344	02.12.17	1	1	0	0	0	95.3FM	x4 bks/Road	
12	WINGEI 2		946	962		1,083	226	566		2	2	0	0	0			
		Wingei 2	267	962	Nasimingel HC	856	169	440	02.12.17	1	1	0	0	0	95.3FM	x4 bks/Road	
		Wingei	679	0	Nasimingel HC	227	57	126	02.12.17	1	1	0	0	0	95.3FM	x2 bks/Road	
13	BAPANDU		946	782		743	161	373		1	1	0	0	0			
		Bapandu 1,2,3	946	782	Nasimingel HC	743	161	373	01.12.17	1	1	0	0	0	95.3FM	x4 bks/Road	
14	YEKINGEN		1,020	1,056		972	250	531		2	2	0	0	0			
		Yekingen	485	723	Nasimingel HC	538	150	300	01.12.17	1	1	0	0	0	95.3FM	x3 bks/Road	
		Belmo	534	333	Nasimingel HC	434	100	231	01.12.17	1	1	0	0	0	95.3FM	x2 bks/Road	
15	SARA		1,166	1,102		1,062	239	516		2	2	0	0	61			
		Boim	669	584	Yangoru HC2	621	100	298	13.11.17	1	1	0	0	35	Nbc	Road	
		Sara	496	518	Yangoru HC2	441	139	218	13.11.17	1	1	0	0	26	Nbc	Road	
16	HOLIK		982	790		1,012	167	480		2	2	0	0	47			
		Holik 1 & 2	556	431	Yangoru HC2	546	89	259	13.11.17	1	1	0	0	35	Nbc	Road	
		Yaraboim	426	359	Yangoru HC2	466	78	221	13.11.17	1	1	0	0	12	Nbc	Road	
17	NINDEPOLYE		511	427		501	91	230		1	1	0	0	0			
		Nindepolye	511	427	Nasimingel HC	501	91	230	01.12.17	1	1	0	0	0	95.3FM	x2 bks/Road	
18	KWAIAN		448	469		464	95	237		1	1	0	0	0			
		Kwaiian	448	469	Nasimingel HC	464	95	237	29.11.17	1	1	0	0	0	95.3FM	x2 bks/Road	
19	DUNINGI		643	640		557	97	294		2	2	0	0	0			
		Duningi	281	290	Nasimingel HC	275	48	142	30.11.17	1	1	0	0	0	95.3FM	x1 bk/Road	
		Kairiru	361	350	Nasimingel HC	282	49	152	30.11.17	1	1	0	0	0	95.3FM	x1 bk/Road	
20	MIAMBORU		707	750		859	200	413		1	1	0					

LLG	WARD	VILLAGE	Estimated 2017 Data Based On 2000 Census	Estimated 2017 Data Based On 2014 Data	Health Centre	Population Surveyed	House Holds Surveyed	Nets Issued	Date Of Distribution	Village	Digicel	Bmobile	Citifon	Houses With Radios	Radio Networks	Comment
		Guningi	745	287	Nasimingel HC	561	100	278	03.12.17	1	1	0	0	0	95.3FM	x2 bks/Road
25	NIMBIHU		605	234		512	133	253		1	1	0	0	0		
		Nimbihu	605	234	Nasimingel HC	512	133	253	30.11.17	1	1	0	0	0	95.3FM	x3 bks/Road

