

Erasmus + Programme  
Erasmus + International Credit Mobility

# GUIDE FOR INCOMING ERASMUS+ STUDENTS



“1 Decembrie 1918” University of Alba Iulia, Romania  
[www.uab.ro](http://www.uab.ro)



Erasmus + Programme  
Erasmus + International Credit Mobility

# GUIDE FOR INCOMING ERASMUS+ STUDENTS



“1 Decembrie 1918” University of Alba Iulia, Romania  
[www.uab.ro](http://www.uab.ro)





Erasmus+

Changing lives. Opening minds.

This project has been funded with support from the European Commission. This publication reflects the views only of the author, and the Commission cannot be held responsible for any use which may be made of the information contained therein.

Editing: Centre for International Relations

©“1 Decembrie 1918” University of Alba Iulia  
Centre for International Relations

# Contents

Rector's Message	4
Discovering Romania	6
The City of Alba Iulia	10
Arriving in Alba Iulia	12
Our University	13
Student Life	15
Centre for International Relations	19
Erasmus+ Coordinators	21
Educational Offer of "1 Decembrie 1918" University of Alba Iulia	
Bachelor's Programmes	22
Master's & Doctoral Programmes	23
Teaching Departments	24
Erasmus+ partner institutions	25
Erasmus+ International Credit Mobility Partner Institutions	30
Mini Glossary	31



# Rector's message

As a public higher education institution, “1 Decembrie 1918” University of Alba Iulia is going through a new stage of its existence, a stage marked by the three principles underlying the current mandate of the University's Management: performance, quality and consistency. As a relatively young University - we celebrated our 20th anniversary in 2011 -, our University is fully aware of its place and role within the higher education system in Romania, and constantly relates to the tradition of the Transylvanian educational system. Each detail of our institutional activity is connected to the importance of our University's existence in the heart of Romania, a privileged locus of the national spirit. The basic mission of the University is precisely that of contributing through specific means of education, research and value creation to preserving and underpinning the national identity, to unity in diversity of the Romanian culture and to its active integration within the European and universal flow of values.



The previous developmental stage of our University has been marked by major strategic projects and significant achievements in the strengthening and advancement of the academic body, by an increase in scientific performances of the teaching and research staff, the development of all the material resources, including living conditions offered to our students. The new stage of maturity aims at intensifying these actions, having as main purpose the increase of every category of performances. It is our endeavour to focus on performances which will secure a higher ranking of our University in the coming years, in the context of a hierarchy based on firm, fair and unitary criteria for all Romanian institutions of higher education. The strategic objectives of the University are therefore oriented in this direction, and aim at increasing the quality of the educational process in accordance with the Romanian Law of Education 1/2011. Within the European context, our University promotes excellence in scientific research, by developing and strengthening academic relations at national and international level, supporting individual excellence of teaching staff and researchers, increasing the quality of students' life and creating opportunities for personal and professional development in order to help them actively integrate in society, promoting an efficient institutional management, developing and updating material resources, providing and diversifying financial resources.

The academic community of Alba Iulia focuses on students and the quality of their education and professional training. The values that we promote are orientated towards maintaining a harmonious and seminal relationship between the actors of the educational process: equality, diversity, sustainability and social responsibility, openness, transparency and fairness, innovation and professionalism, excellence, respect towards the individual and collective values, responsibility for the human and material patrimony. We enjoy collaboration with institutions from the secondary and higher educational systems from Romania and abroad, viable and constructive partnerships with public and private institutions and the enthusiastic support of local and regional officials, so that we cannot but mobilise and channel all our activities and commitment to the enhancement of our University's performances. In troubled times, marked by a world crisis and instability, we vouch to offer stability and balance, by promoting essential ethical and aesthetic principles, a sense of responsibility towards national identity and its values within the European and global context. We assure all our University's current and prospective students, friends, partners, supporters or collaborators that they will always find a close-knit academic family in Alba Iulia, in the heart of the Alba Carolina Fortress. In order to understand its essence, you are warmly welcomed here to become the friends with whom we can pledge allegiance to the truth once spoken by Nelson Mandela: "Education is the most powerful weapon which you can use to change the world."

**Professor Valer Daniel Breaz, Ph.D.**  
**Rector of "1 Decembrie 1918" University of Alba Iulia**

# Discovering Romania

**Romania** lies in the Central-South-Eastern part of the European continent. Having a surface of approximately 238,000 sq km and a population of 21.5 million inhabitants, it is one of the medium-sized countries of Europe. Romania's neighbours are Moldavia, Ukraine, Hungary, Serbia, Bulgaria and the coasts of the Black Sea.

Romania, a semi-presidential republic, with a bicameral Parliament, joined the European Union in 2007.

The geographical position and the historical evolution of this territory imposed it as an archetype of mixtures between cultures relatively differentiated: Western-European, East-European and Balkan. This historical reality was materialised into a special type of general behaviour that manifests itself through tolerance, hospitality and easiness of communication for the people that live here.

The capital of the country is the city of **Bucharest**, founded in 1459, which has now a population of over 2 million inhabitants. Other major cities are Timișoara, Constanța, Iași and Cluj-Napoca.

The official language is Romanian, belonging to the Romance family of languages (of Latin origin like Italian, Spanish and French);

Romania's official currency is LEU(RON), pl. LEI; 1 LEU is 100 BANI.

Flag description: three equal vertical bands of blue (hoist side), yellow, and red.

## Perhaps you have heard about the famous Romanian castles and fortresses

**Biertan Fortified Church, Harman Fortified Church, Bran Castle, Peles Castle in Sinaia, Calnic Fortified Church, Prejmer Fortified Church, Cisnădie Fortified Church, Râsnov Fortress, Corvinesti Castle in Hunedoara, Saschiz Fortified Church, Cristian Fortified Church, Valea Viilor Fortified Church, Dârjiu Fortified Church, Viscri Fortified Church, Făgăras Fortress, Alba Carolina Fortress.**

Romania's collection of castles and fortresses perhaps best illustrates the rich medieval heritage of the country. While castles built from the 14th to the 18th centuries are strong and austere fortresses, built mainly for defence against invaders, those erected beginning in the late 1800s are imposing and luxurious. The most popular include the 14th century Corvinesti Castle, built on the site of a former Roman camp, the elegant 19th century Peles Castle with its 160 rooms filled with priceless European art and, of course, the Bran Castle, built in the mid-1300s.

## Medieval Cities



World literature has found valuable sources of inspiration in some of Romania's castles; the most famous novels written about them are "The Castle from the Carpathians" by Jules Verne and "Dracula" by Bram Stoker.

As a result of almost nine centuries of Saxon presence, Transylvania, located in central Romania, claims a cultural and architectural heritage unique in Europe. This region is home to nearly 200 Saxon villages, churches and fortifications built between the 13th and 15th centuries. Seven of the fortified Saxon churches (in Biertan, Calnic, Dârjiu, Prejmer, Saschiz, Valea Viilor, and Viscri) were designated by UNESCO as World Heritage Sites. A visit to these quaint villages, placed amidst lush farmland and green rolling hills, will give you a taste of the long-gone medieval times.

### Romania's national and natural parks

**Apuseni Natural Park, Bicazului Gorges – Hășmas National Park, Călimani National Park, Ceahlău National Park, Piatra Craiului National Park, Retezat National Park**

Romania's national and natural parks, displaying a unique variety of landscapes, vegetation and wildlife, protect some of the largest remaining areas of pristine forest in Europe. Grasslands, gorges, subterranean caves, volcanic lakes, and an extensive river network add to the richness of the park system that also includes the **Danube Delta**, a UNESCO Biosphere Reserve and Europe's largest wetland.

### Romanian cuisine

Romanian gastronomy is an expression of the geography and history of the country: the landscape diversity provides Romanian housewives with a large variety of fruits, vegetables and spices while the historical neighborhood of other ethnic groups has left a colourful and tasty mark. So, Romanian cuisine is extremely diverse. In fact it is a mix up of different dishes from **several cultures** it has come across during its stormy past, but it has managed to maintain its own character and adapt the foreign recipes to local taste. It has been greatly influenced by Balkan cuisine but it has retained some influences from other neighbours' culinary traditions, such as Germans, Serbians, and Hungarians too.

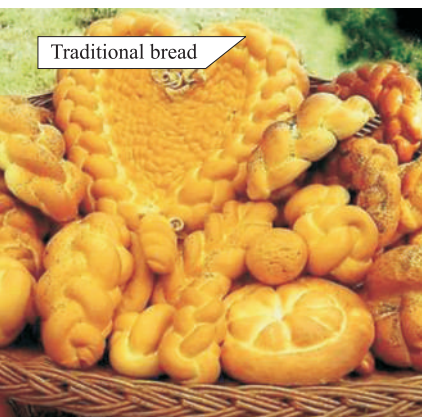
Traditional **Romanian spirits** are very strong and we can include here the famous **palinca** and **țuica**, usually made from plums.

But Romania is also a great **wine producer**. In fact **archaeological findings** and **historical documents** place the beginning of **wine culture** on these lands some 4000 years ago. **High quality wines** produced in this region were object of trade ever since ancient times. Some of the most important vineyard centres are Dealu Mare, Pietroasa, Drăgășani, Murfatlar, Cotnari, Odobești and some of the best Romanian wine varieties include **Tămâioasa Românească, Feteasca Alba, Feteasca Neagra, Jidvei, Galbena de Odobești, Băbeasca, Busuioaca** and many others.

Although each region has its own specific dishes, there are a few characteristics of Romanian traditional cuisine.



# Discovering Romania



**Home - made bread** - since ancient times, Romanians have been an agrarian society; worshipping agrarian and earth gods came natural to them. That is why cereals like wheat have always played an important role in our life and in our cuisine too.

**Polenta (mămăligă)** is a very popular Romanian dish made from boiled cornmeal. It is traditionally a slowly cooked dish. It sometimes takes an hour or longer and constant stirring is necessary. Polenta is considered the peasants' bread – it is thick, but not as consistent as bread.

**A lot of soups** – you can find a lot of soup recipes in **Romanian cuisine**; some of them are clear soups, but some of them are thicker broths which are usually prepared with lots of vegetables and these ones are called *ciorbe* in Romanian.



**Ciorbe** are extremely diverse - one can prepare a *ciorba* almost from everything. Meat used for *ciorbe* can be of any kind - pork, beef, chicken, lamb - and they usually contain a mix up of vegetables. *Ciorbe* are usually served with sour cream (*smântână*) in Transylvania. There are several recipes of broths which can be served in most restaurants with or without sour cream.

**Here are some special Christmas dishes, which can be easily found all over the country:**

- **Cârnați** – pork based sausages
- **Caltaboși** – a special type of sausages made from pork entrails
- **Piftie** – pork based jelly (aspic) made of pork and leftover organs (such as ears or snouts), garlic and sometimes vegetables like carrots, string beans
- **Tobă** - various cuttings of pork, liver boiled, diced and “packed” in pork stomach like a salami
- **Sarmale** - rolls of cabbage pickled in brine and filled with minced meat, rice and various spices and herbs. They can be served with sour cream and/or polenta. These are probably the most well known Romanian dish.
- **Cozonac** – a special type of panettone filled with a walnut squash and/or cocoa, raisins, Turkish delight or with poppy squash (poppy seeds dried, smashed and boiled with sugar and milk).

**Easter feast** – there is always going to be lamb served for Easter! Lamb means purity and a new life and it is also a symbol of Jesus Christ and His sacrifice for humans' sins. Lamb roast and sometimes lamb soup is eaten on the Easter day.

**But for Easter there are also “sarmale” and “cozonac” alongside other specialties as:**

- **Drob** - a cooked mix of intestines, meat (traditionally lamb), eggs and **fresh vegetables**, mainly spring onion and dill
- **Oua roşii** (red painted eggs) – for Easter Romanians symbolically knock red eggs (hard boiled eggs painted traditionally in red – but today people use different colours) – red as blood, saying “Christ is risen!” and the answer is “He has risen indeed!”
- **Pasca** – a nutty kind of cheesecake made only at Easter time.



## Alba County

Alba County is situated in central Romania, where the Transylvanian Plateau meets the Apuseni Mountains and the Southern Carpathians (also known as Transylvanian Alps). It is crossed by the Mureş River (one of the longest rivers in Romania).

The high relief forms are predominant in Alba County; thus, the mountains cover about 52% of the total surface and the plateaus and hills cover 26%. The plains cover the rest of 22%.

Alba County has 11 towns (Alba Iulia, Aiud, Blaj, Sebeş, Abrud, Câmpeni, Cugir, Ocna Mureş, Zlatna, Teiuş, Baia de Arieş), 65 communes and 658 villages.

In Alba County (the village of Tartaria), the first writings in human history (7000 years old) were discovered.

The territory presently occupied by Alba County had a very important role before and during Roman Empire domination because of its strategic position and natural resources (gold, silver, salt etc.)

# The city of Alba Iulia

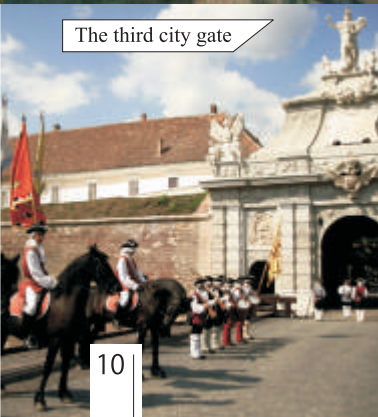
Citadel guard



Michael the Brave



The third city gate



## Historical facts:

Alba Iulia is one of the most important historical sites of Romania.

The city was an important Dacian political, economic and social centre named Apulon, mentioned by the ancient Greek geographer Ptolemy. After the southern part of Dacia became a province of the Roman Empire, the capital of the Dacia Apulensis district was established here, and the city was known as Apulum. It was one of the largest centres in Roman Dacia and the seat of Legion XIII Gemina.

Alba Iulia became the capital of the Principality of Transylvania in 1541, a status retained until 1690. It was during the reign of Prince Gabriel Bethlen that the city reached a high point in its cultural history, with the establishment of an academy. Further important milestones in the city's development include the creation of the Batthyanaeum Library in the 18th century, and the arrival of the railway in the 19th century.

In November 1599, Mihai Viteazul (Michael the Brave), Voivode of Wallachia, entered Alba Iulia following his victory in the Battle of Șelimbăr and became governor of Transylvania. In 1600, he took control of Moldavia, thereby uniting the three principalities under his rule until his murder in 1601 by Giorgio Basta's agents. His achievement has a historic significance for Romanians, representing the first unification of the three Romanian-populated principalities of Wallachia, Moldavia, and Transylvania.

In 1918, tens of thousands of Romanians and representatives of the Transylvanian Saxons and other minorities of Transylvania, gathered in Alba Iulia on December 1st, now commemorated as the Union Day in Romania, to hear the proclamation of the union of Transylvania with the Kingdom of Romania. In 1922, Ferdinand of Romania was symbolically crowned King of Romania in Alba Iulia in an act which mirrored the achievement of Mihai Viteazul. Since then our city has been known as The Unification City or the Soul Capital of all Romanians.

### **The Reunification Cathedral**

The Reunification Cathedral of Alba Iulia was built during 1921-1923 based on a project designed by architect D. G. Stefanescu in collaboration with engineer T. Eremia. The establishment was built in the shape of a Greek cross. The Great Romanian monarchs King Ferdinand and Queen Mary were crowned here on the 15th of October 1922.

### **The National Museum of Unification**

The National Museum of Unification in Alba Iulia is one of the finest in Romania. It was originally built for military purposes, the *Babilon* Building dating since the half of the 19th century (1851-1853). It has two floors and over 100 rooms, and it exhibits over 130,000 pieces of priceless works included in its patrimony.

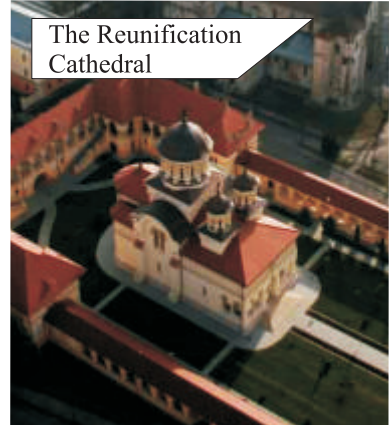
### **The Fortress of Alba Iulia (Alba Carolina Fortress)**

The Alba Carolina fortress was built between 1714 and 1738 and it is considered to be the most representative of Vauban type in Europe. The fortress was designed by the Italian architect Giovanni Morando Visconti, who worked under the supervision of General Stefan de Steinville and was later completed under General Weiss. The fortification has seven bastions (Eugene of Savoy, St. Stephen, The Trinity, St. Michael, St. Charles, St. Capistrano and St. Elisabeth) that make it into a star-shaped, Vauban-style fortress. The fortress is the most important baroque architectural ensemble in Romania and Europe.

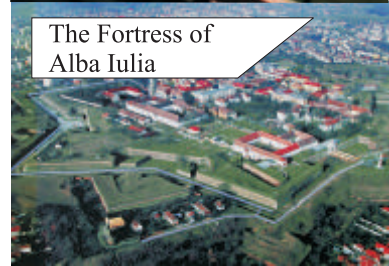
### **The Route of the Three Fortresses**

The Route of the Three Fortresses offers its visitors the chance to travel 2,000 years back in time, walking about the vestiges of three fortifications belonging to three different historical epochs, successively built on the same location, each new citadel including the previous one: The Roman Camp (106 AD), The Medieval Citadel (16th - 17th c.) and the Alba Carolina Citadel (18th c.). The route includes visits to: The Minting Factory Gate, South Gate of the Roman Camp (Castrum), The Military Camp, The Access Tunnel to the Artillery Platform, The Artillery Platform, The Guard Room - The Arms Room, The Bethlen Bastion and the Alba Carolina Citadel.

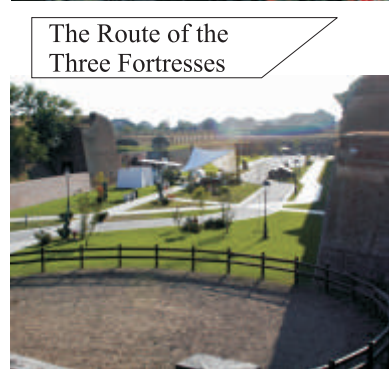
The tourist potential of the area is mirrored by many other numerous traces of millenary history, art and architecture, and the variety and beauty of nature.



The Reunification Cathedral



The Fortress of Alba Iulia



The Route of the Three Fortresses



The Citadel Park



# Arriving in Alba Iulia

## By plane:

International airports of Romania: Bucharest, Cluj-Napoca, Timișoara, Sibiu, Constanta, Arad and Targu Mures.

## By train:

Because of its central position, Alba Iulia is situated on an important railway route. The timetable of Romanian train routes can be found on [www.mersultrenurilor.ro](http://www.mersultrenurilor.ro).

## By bus:

From Bucharest and Cluj Napoca to Alba Iulia you can travel by bus. There are at least 4 buses a day and the price is about 5 Euro (from Cluj Napoca to Alba Iulia) or 15 Euro from Bucharest.

For more information, please visit:

The International Airport in Bucharest [www.bucharestairports.ro](http://www.bucharestairports.ro),

The International Airport in Cluj-Napoca [www.airportcluj.ro](http://www.airportcluj.ro),

The International Airport in Timisoara [www.aerotim.ro](http://www.aerotim.ro),

The International Airport in Sibiu [www.sibiuairport.ro](http://www.sibiuairport.ro).



# Our University

## “1 Decembrie 1918” University

“1 Decembrie 1918” University was established in 1991, through the 474/1991 Decision of the Romanian Government and started to function in the academic year 1991/1992. The University is a public institution for education and research, integrated into the national higher education system, open to worldwide inter-university cooperation.

UAB is an established university which aims at producing highly qualified specialists for the ever more demanding and challenging national and international labour market. UAB is committed to creating, preserving and disseminating knowledge, enhancing the academic community's excellence, developing students' skills and competences, through promoting a culture of values, morality, inquiry, research, and life-long learning;

### Academic calendar

Two semesters:

- the first semester: 1st October- mid February;
- the second semester: end of February – end of June;

Two exam periods in February and June with (2 re-examinations);

Vacations:

- Christmas holidays - 2 weeks in December-January
- 1 week between the semesters in February
- summer holidays- July-30 September

Erasmus+ students benefit from tutor-based education (in English):

- Weekly assignments (based on the reading list in accordance with the university-approved syllabus),
- Weekly face-to-face sessions with the assigned tutor.

As of now UAB cannot offer standard large audience university lectures in English, except for English language courses.



The grading scale for each discipline runs from 10 to 1, all grades being integers. The lowest pass grade is 5, and the highest pass grade is 10.

Prospective incoming students may apply to the Erasmus Office no later than June 30 for the 1st Semester and December 15 for the 2nd Semester.

### Orientation day

The orientation day is organised by the Erasmus+ Office at the beginning of each semester. It is mandatory that all Erasmus+ students be present at the meeting, at which they will obtain all the necessary information concerning the study period in Alba Iulia. Information about the date of the orientation day will be sent to you by e-mail before your arrival.

### Erasmus Buddies

The Erasmus+ Buddy Programme offers opportunities for cultural understanding and self-development under the principle of Students Helping Students.

Your buddy will:

- Tell you how to get to Alba Iulia;
- Pick you up at the bus/train station here in Alba Iulia;
- Take you to the residence halls and help you fill in the necessary documents;
- Take you to the University during Orientation Day;
- Give you basic orientation in the city, at the university, explain public transportation system, shopping;
- Sharing tips about the best places to have fun;
- Help you during your mobility with anything you need.

If you are interested in having a Buddy, please accept the invitation to the Erasmus Incoming Students Group on Facebook, which we will create prior to your arrival in Alba Iulia.



# Student Life

## The Students' Union

University students can benefit from the cultural-artistic and entertainment facilities and services provided by the **Students' Cultural Centre**. The institution offers rooms for rehearsals and shows, and through its specialized staff or partners, it provides different training courses in traditional and modern Romanian music, modern and ballroom dancing, etc.

Three student and alumni organisations are active within the University: the University Students' League (LSUA), The Association of Christian-Orthodox Students (ASCOR), and the Alumni Association (ALUMNI).

The **“Gaudeamus” International Study and Conference Centre** has been especially designed and equipped to host most of the national and international scientific and cultural events organized by the University. It also has rooms for teaching/learning activities, including laboratories and study rooms.

## Accommodation

The University has 4 modern **Student Residence Halls**, with a total capacity of 948 places. The standard facilities and appliances in each Residence Hall include triple bed rooms with modern furniture, bathroom, refrigerator, TV, Internet connection, a launderette, a multifunctional hall, study rooms and kitchens with gas stoves and electric hoods. Inside the campus there is a modern gym. The University also has a **Guest House** with 32 rooms (studios and apartments equipped with a private bathroom, refrigerator and TV) which are used to accommodate professors from Romania and abroad, as well as for delegates in scientific events organized by the University.

Price of accommodation – 150 lei (about 35 Euro/month).

## Meals

Students can have lunch at the **University Restaurant** located on the premises of the Campus with the following facilities: a room with 200 seats, 2 cocktail rooms (social events, conferences, and official meetings) with 39 seats; an automatic line for preparing





# Student Life

food with modern kitchen appliances. The University Restaurant offers only lunch; a 3 course menu is approx. 15 Ron. It is open from Monday to Friday, from 11:30 to 15:30. The University also has a **snack bar** with an open-air terrace (during summer time), as well as outdoor recreational areas within the historical grounds of Alba Iulia Fortress.

## Local transport

In general, local transport is not expensive. There are several buses in Alba Iulia and some of them connect the Cetate (new commercial city centre) with Centru (downtown, the old city centre) and Ampoi III (where 2 of the University student residence halls are located). Buses generally follow the route Railway station – Centru – Ampoi III – Cetate and vice versa. A bus ticket costs 1.8 lei.

Taxis are still relatively cheap, so if you need one just call (or ask your Romanian friend to do it for you) one of the following numbers:

- Taxi Florea 0258 945
- Taxi AS 0258 946
- Taxi Exclusiv 0258 941

## Shopping

Supermarkets in the city such as Kaufland, Penny, Dacia are open late every day (except for Sundays when they close earlier). Smaller local shops (especially food stores) and newsagents open at about 8 am and close at 6-7 pm on weekdays (a bit earlier on Saturdays); some of them are open on Sundays. Most of other shops open at 9 am (and close at 5 pm). There are some small nonstop stores in Cetate.

The most diversified shopping location is Alba Mall ([www.mallalba.ro](http://www.mallalba.ro)), 50A Tudor Vladimirescu Str., phone 0258/817505.

## Medical facilities

European citizens need a valid European Health Insurance Card in order to have free access to health care services in public hospitals and clinics.

No specific vaccination is needed to enter Romania. Only if you plan to stay a long time in a



rural area, you should get vaccinated against tick-borne encephalitis.

Basic medical care is available on campus.

There is a student medical office on campus where you can get full medical assistance according to European standards. Medical examinations with the students' doctor are free of charge and some easy drugs for emergencies can be administered immediately.

### Health and Liability insurance

For more serious illnesses and medical conditions that require medical intervention or hospitalization, you should have medical insurance which covers the entire period of your stay in Romania.

Before you come to Romania, make sure that you have made arrangements to be properly insured for the costs of medical treatment and liability.

Personal liability insurance is not compulsory but recommended. It insures you against costs incurred if you harm someone else or damage someone else's possessions.

### Pharmacies

Medicines prescribed by a doctor can be picked up at a pharmacy. These are open mainly from 08.00 to 17.30 hrs on working days, but there are also non-stop pharmacies.

For emergencies, there is one general emergency number to phone in Romania, which can be dialled from any telephone, cable or mobile, private or public (this number passes information on to the nearest police station, fire fighters or hospital): **112**.

### Library

**The University Library** is a modern, computerized library with a stock of over 100,000 volumes (together with the Archbishopric Library) that cover almost all fields of interest. The Orthodox Archbishopric Library is located on the premises of the Faculty of Orthodox Theology and provides services which are similar to the ones of the University's Library, both sharing a common database.

The Library's services are open to all University students, (BA, MA, and Ph.D.), researchers, and teaching professionals and administrative staff.

The database of the Library can be accessed through the OPAC software. The library is



# Student Life

organised on home loan and reading rooms with over 100 seats. The access to the Library's collections is made based on a Library Card, issued according to the Library bylaws.

There are additional services available to the readers in exchange of a small fee.

The library includes four reading rooms with free access to the shelf located on the first floor of the building, where readers can make photocopies; there is also a loan section, a reading room and the acquisitions and archiving department on the ground floor; a multimedia room is located in the attic of the Library's building equipped with 50 computers, where students can check the electronic databases to which the University is a subscribed user; there are digitized teaching/learning materials which students can also purchase.

## Sports facilities

There are two gyms available to the students of our University, suitable for different sports activities (fitness, body-building, basketball, football, table tennis, etc.).

Our University has an international women's basketball team, CSU Alba Iulia, playing in first division competitions in Romania.

There is also one football stadium in our city, a public swimming pool and several private ones, plus many opportunities for different other sports activities.

## Culture

Throughout the year there is a variety of events, exhibitions and concerts to be attended in Alba Iulia's cultural centres, Museum and other similar locations. Our city also has much to offer in the area of culture, history and civilization.





# Centre for International Relations

The Centre for International Relations is the pacesetter for the internationalisation strategy of “1 Decembrie 1918” University of Alba Iulia, developed in cooperation with and endorsed by the university management for the current mandate (2012-2016). The main tenets of this strategy are construed along the following lines: extending the international dimension of research activities, and teaching/learning processes, raising intercultural and plurilingual awareness, and active involvement in social and corporate governance. We actively foster the mobility of teachers and students and we continuously extend our cooperation with institutions worldwide, either through bilateral agreements or collaborating in different types of networks (Association of Carpathian Regional Universities, Consortium in Humanities, European Network for Intercultural Education Activities, etc.). Our university has currently concluded 101 Erasmus+ agreements with higher education institutions for student and staff mobility, as well as 50 Erasmus+ agreements with various institutions for student placement. We yearly host a number of approximately 150 outgoing students and 50 incoming students within the Erasmus+ mobility Programme. Our university is also implementing the International Credit Mobility action, as we have been awarded grants for mobility flows with Bosnia and Herzegovina, Serbia, Montenegro, Uzbekistan and China (with China we have grants only for staff mobility) besides mobility programmes we will develop collaborative educational and research activities, such as: co-organising thematic conferences (GeoCAD, ICTAMI, BENA, etc.), co-publishing periodical volumes of conference proceedings and peer-reviewed academic journals. We have already established successful joint PhD programmes, and we are looking into new vistas offered by ERA+ and Horizon 2020 Programmes.

For International students our university organizes a special non- degree programme: Romanian Language as a Foreign Language. Preparatory Year.

For information, advice on or support in the following areas, please contact The Centre for International Relations:

- Study/work experience in Alba Iulia;
- Funding/Scholarships;
- Admission procedures and recognition of diplomas;







- Visa applications;
- Accommodation;
- Insurance;
- Romanian language courses;
- Induction sessions.

Address: 510009 Alba Iulia, 5 Gabriel Bethlen Street,  
Phone: +40 258 806042; Fax: +40 258 802814  
e-mail: erasmusplus\_uab@yahoo.com



### The EU Programmes Office

“1 Decembrie 1918” University of Alba Iulia, signatory to the Erasmus+ University Charter, 223983-LA-1-2014-1-RO-E4AKA1-ECHE-3, Erasmus+ ID code RO ALBAIU 01, sends and receives students to and from partner universities with which it has concluded Erasmus+ Bilateral Agreements.

If your university is on the list of partner universities under the Erasmus+ programme and you wish to study for a period between 3 and 10 months at our university, then contact your Erasmus+ Institutional Coordinator and see what the requirements are for you to apply for an Erasmus+ study grant at your institution.

Fill in the application form and send it to the EU Programmes Office from our university. If your application is approved, you will have to fill in the Learning Agreement, signed and stamped by the Erasmus+ Coordinators from your institution and send it to us.

We will send you a letter of acceptance along with an information package on the University of Alba Iulia. All the application documents can be found at

[www.uab.ro/departamente/relatii\\_internationale/index\\_.php](http://www.uab.ro/departamente/relatii_internationale/index_.php)

Contact:

**Centre for International Relations, Erasmus+ Office,**

“1 Decembrie 1918” University of Alba Iulia

Postal Address: 5 Gabriel Bethlen Street, 510009, Alba Iulia

Phone: 0040-258-806042; Fax: 0040-258-802814,

E-mail: erasmusplus\_uab@yahoo.com

**Contact persons:**

**Mrs. Teodora Iordachescu, Associate Professor PhEd,**

teo.popescu@hotmail.com, bpc@uab.ro

**Mr. Daniel Mihai Melinte** - Erasmus mobility assistant, contact:  
erasmusplus\_uab@yahoo.com, daniel.melinte@uab.ro



# Erasmus Coordinators

## Faculty of History and Philology

### Department coordinators:

Philology: Associate Professor Rodica Chira, Ph.D., rogabchira@yahoo.fr  
History, Archeology, Museology: Senior Lecturer Cosmin Popa-Gorjanu, Ph.D.,  
cosminpg@gmail.com

## Faculty of Orthodox Theology

### Department coordinator:

Assistant Lecturer Lucian Colda, Ph.D. luciancolda@yahoo.de

## Faculty of Law and Social Sciences

### Department coordinators:

Law: Assistant Lecturer Mihaela Simion, Ph.D., mihaelamacavei@yahoo.com  
Sociology: Associate Professor Lucian Marina, Ph.D., marinaflds@yahoo.com  
Social Work: Senior Lecturer Călina Buțiu, Ph.D., bcalina@yahoo.co.uk  
Educational Sciences: Associate Professor Ioana Todor, Ph.D., ioanatodor@gmail.com  
Physical Education and Sports: Assistant Lecturer Sorin Șimon, Ph.D.,  
sorinsimonyah@yahoo.com

## Faculty of Economic Sciences

### Department coordinators

Business Administration and Marketing: Senior Lecturer Silvia Maican, Ph.D.,  
sylvia\_mihalache@yahoo.com  
Finance: Senior Lecturer Adina Dănuțiu, Ph.D., adina.danuletiu@gmail.com  
Accounting: Senior Lecturer Sorin Deaconu, Ph.D., deaconu\_sorin@yahoo.com

## Faculty of Exact Sciences and Engineering

### Department coordinators

Computer Science: Associate Professor Corina Rotar, Ph.D., cory2000ro@yahoo.com  
Mathematics: Professor Nicoleta Breaz, Ph.D., nbreaz@uab.ro  
Land and Cadastral Surveying: Associate Professor Levente Dimen, Ph.D.,  
ldimen@uab.ro  
Environmental Engineering: Associate Professor Ildiko Tulbure, Ph.D. Eng. Habil.,  
ildiko.tulbure@tu-clausthal.de  
Electronic Engineering: Senior Lecturer Loredana Boca, Ph.D.,  
loredana\_bocal@yahoo.com

# Educational Offer of “1 Decembrie 1918” University of Alba Iulia

## Bachelor’s Programmes

### The Faculty of History and Philology

History	History
	Archaeology
	Archaeology (in english)
Language and Literatures	Romanian Language and Literature –English Language and Literature
	Romanian Language and Literature – French Language and Literature
	French Language and Literature – English Language and Literature
	Translation and Interpretation (English - French - Romanian)

### The Faculty of Economic Sciences

Business Administration	The Economy of Trade, Tourism and Services
	Business Administration
	Business Administration (in english)
Finance	Finance and Banking
Accounting	Accounting and Computer Science Management
Marketing	Marketing

### Faculty of Exact Sciences and Engineering

Computer Science	Computer Science
	Computer Science (in english)
Geodetic Engineering	Land and Cadastral Surveying
Electronic Engineering and Telecommunications	Applied Electronics
Environmental Engineering	Environmental Engineering

### The Faculty of Law and Social Sciences

Law	Law
Sociology	Sociology
Social Work	Social Work
Administrative Sciences	Public Administration
Educational Sciences	Primary and Preschool Teacher Education
Physical Education and Sports	Physical Education and Sports
Psychology	Occupational Therapy

### Faculty of Orthodox Theology

Theology	Pastoral Orthodox Theology
	Orthodox Theology – Social Work
	Religious music

# Master's & Doctoral Programmes

## The Faculty of History and Philology

Romanian Literature and Culture within a European Context  
English Language, Literature and Culture within a European Context  
Museum studies and cultural tourism  
Regional identities in Central and Eastern Europe  
Interdisciplinary archaeological research  
The research, conservation and capitalization of the historical heritage

## The Faculty of Economic Sciences

Audit and Control of Companies  
Accounting Information System in the Management Decision Making  
Administration of Sustainable Regional Development  
Business Administration in Trade, Tourism, and Services  
Banks, Insurance and Financial Markets  
Marketing and Sales Promotion

## Faculty of Exact Sciences and Engineering

Information Systems in Surveying and Property Management  
Advanced Programming and Database

## The Faculty of Law and Social Sciences

Private Law Institutions  
Managerial Assistance in the Public and Private Sectors  
Educational Management  
Social Work in ecclesiastical institutions  
Criminal Sciences and Criminology  
Psycho-Pedagogy of Early and Primary Teacher Education  
Human resources Development and Management

## Faculty of Orthodox Theology

Comparative Theology  
Intercultural and Inter-religion Mediation  
Pastoral Counselling

# University units

## Teaching departments

### The Faculty of History and Philology

1. Department of History, Archaeology and Museology

Director: Associate Professor Mihai GLIGOR, Ph.D., m\_gligor@yahoo.com

2. Department of Philology

Director: Senior Lecturer Gabriel BARBULET, Ph.D., gabriel.barbulet@gmail.com

### The Faculty of Economic Sciences

3. Department of Business Administration and Marketing

Director: Associate Professor Ionela GAVRILĂ-PAVEN, Ph.D., ionelapaven@yahoo.com

4. Department of Finance and Accounting

Director: Associate Professor Iuliana CENAR, Ph.D., cenar\_iuliana@yahoo.com

### The Faculty of Exact Sciences and Engineering

5. Department of Exact Sciences and Engineering

Director: Associate Professor Corina ROTAR, Ph.D., cory2000ro@yahoo.com

### The Faculty of Law and Social Sciences

6. Department of Law and Administrative Sciences

Director: Senior Lecturer Laura CETEAN-VOICULESCU, Ph.D., lauravoiculescu@yahoo.com

7. Department of Social Sciences

Director: Senior Lecturer Petronela TALPAS, Ph.D., ptalpas@yahoo.com

8. Department of Teaching Education

Director: Associate Professor Ioana Todor, Ph.D., ioanator@gmail.com

9. Department of Physical Education and Sports

Director: Assistant Lecturer Sorin Şimon, Ph.D., sorinsimonyah@yahoo.com

### The Faculty of Orthodox Theology

10. Department of Theology and Social Work

Director: Associate Professor Dumitru VANCA, Ph.D., vancadum@yahoo.com

## Administrative Centres

### Centre for International Relations

Director: Associate Professor Teodora IORDACHESCU, Ph.Ed.

teo\_popescu@hotmail.com, bpc@uab.ro, Tel: +40-0258-806042, Fax: +40 258 802814 / +40-0258-806042

### Centre for Quality Management and Institutional Strategy

Director: Associate Professor Letitia Simona TRIF, Ph.Ed.

dmc@uab.ro, trifletitia@yahoo.com, Tel: +40-0258-813722 ext.350, Fax: +40-0258-813722

### Centre for Open, Distance and Life-Long Learning

Director: Associate Professor Levente DIMEN, Ph.D.

ldimen@uab.ro. Tel: +40-0258-806266, Fax: +40-0258-806266

### Centre for Technology Transfer, Research, Development, Innovation and Project Management

Director: Associate Professor Manuela KADAR, Ph.D.

dmp@uab.ro, manuellaadar@yahoo.com, Tel: +40-0258-806271, Fax: +40-0258-806271

### Centre for Career Orientation, Counselling and Development

Director: Associate Professor Larisa DRAGOLEA, Ph.D.

larisadragolea@uab.ro, Tel: +40-0258-813722 ext. 350, Fax: +40-0258-813722

# Erasmus+ partner institutions

Field of study	University	Erasmus code
<b>Business Administration</b>	UNIVERSITY OF HRADEC KRALOVE	CZ HRADEC01
	NEPOLIS UNIVERSITY PAFOS	CY PAFOS01
	JOSIP JURAJ STROSSMAYER UNIVERSITY OF OSIJEK	HR OSIJEK01
	CONSERVATOIRE DES ARTS ET MATIERS	F PARIS056
	UNIVERSITY OF PIRAEUS	G PIREAS01
	UNIVERSITA DEGLI STUDI DI FOGGIA	I FOGGIA03
	UNIVERSITA DEGLI STUDI DI TORINO	I-TORINO01
	UNIVERSITA DEGLI STUDI DEL PIEMONTE ORIENTALE "AMEDEO AVOGADRO"	I VERCCELL 01
	KAUNAS UNIVERSITY OF TECHNOLOGY	LT KAUNAS 02
	INTERNATIONAL SCHOOL OF LAW AND BUSINESS	LT VILNIUS15
	KLAIPEDA STATE COLLEGE	LT KLAIPED09
	GOCE DELCEV UNIVERSITY	MK STIP01
	POLITECHINKA CZESTOCHOWSKA	PL CZESTOC01
	STANISLAW STASZIC STATE SCHOOL OF HIGHER VOCATIONAL EDUCATION IN PILA	PL PILA02
	THE ANGELUS SILESIIUS STATE SCHOOL OF HIGHER VOCATIONAL EDUCATION IN WALBRZYCH	PL WALBRZY04
	THE WITELON UNIVERSITY OF APPLIED SCIENCES IN LEGNICA	PL LEGNICA01
	UNIVERSITY OF LODZ	PL LODZ01
	UNIVERSITY OF ECONOMY IN BYDGOSZCZ	PL BYDGOSZ06
	ALCIDE DE GASPERI UNIVERSITY OF EUROREGIONAL ECONOMY	PL JOZEFOW01
	UNIVERSITY OF ZIELONA GORA	PL ZIELONAO1
	THE JERZY KUKUCZKA ACADEMY OF PHYSICAL EDUCATION	PL KATOWIC05
	STATE HIGHER VOCATIONAL SCHOOL IN WALCZ	PL WALCZ01
	UNIVERSITY OF SZCZECIN	PL SZCZECI01
	UNIVERSIDADE DA MADEIRA	P FUNCHAL03
	GEA COLLEGE CVS DRUZBA ZA VISJESOLSKO IZOBRAZEVANJE- CENTER VISJIH SOL, D.O.O.	SI LJUBLJA07
	UNIVERSITAT DE LLEIDA	E LLEIDA01
	ADYAMAN UNIVERSITY	TR ADIYAMA01
	BALIKESIR UNIVERSITESI	TR BALIKES01
	BINGOL UNIVERSITY	TR BINGOL01
	FIRAT UNIVERSITY, ELAZIG	TR ELAZIG01
MUSTAFA KEMAL UNIVERSITY	TR HATAY01	
ISTANBUL GELISIM MESLEK YUKSEKOKULU	TR ISTANBU32	
MEHMET AKIF ERSOY UNIVERSITY	TR BURDUR 01	
<b>Public Administration</b>	RADOM ACADEMY OF ECONOMICS	PL RADOM04
<b>Archaeology</b>	FREIE UNIVERSITAT BERLIN	D BERLIN01
<b>Architecture and urban planning</b>	NEPOLIS UNIVERSITY PAFOS	CY PAFOS01
	THE ANGELUS SILESIIUS STATE SCHOOL OF HIGHER VOCATIONAL EDUCATION IN WALBRZYCH	PL WALBRZY04
<b>Construction and Civil Engineering</b>	ALEXANDER TECHNOLOGICAL INSTITUTE OF THESSALONIKI	G THESSAL 12
<b>Accounting</b>	CONSERVATOIRE DES ARTS ET MATIERS	F PARIS056
	UNIVERSITY OF MACEDONIA DEP. OF BUSINESS ADMINISTRATION	G THESSAL02
	INTERNATIONAL SCHOOL OF LAW AND BUSINESS	LT VILNIUS15
	GOCE DELCEV UNIVERSITY	MK STIP01

	POLITECHINKA CZESTOCHOWSKA	PL CZESTOC01
	STANISLAW STASZIC STATE SCHOOL OF HIGHER VOCATIONAL EDUCATION IN PILA	PL PILA02
<b>Law</b>	JOHANNES KEPLER UNIVERSITAT LINZ	AT LINZ01
	JOSIP JURAJ STROSSMAYER UNIVERSITY OF OSIJEK	HR OSIJEK01
	REGENSBURG UNIVERSITY	D REGENSB01
	ALMA MATER STUDIORUM UNIVERSITA DI BOLOGNA	I BOLOGNA01
	UNIVERSITA DEGLI STUDI DI CATANIA	I CATANIA01
	UNIVERSITA DEGLI STUDI DI FOGGIA	I FOGGIA03
	INTERNATIONAL SCHOOL OF LAW AND BUSINESS	LT VILNIUS15
	GOCE DELCEV UNIVERSITY	MK STIP01
	KATOLICKI UNIWERSYTET LUBELSKI JANA PAWLA II	PL LUBLIN02
	NICOLAUS COPERNICUS UNIVERSITY FACULTY OF LAW AND ADMINISTRATION	PL TORUN01
	THE ANGELUS SILESIVS STATE SCHOOL OF HIGHER VOCATIONAL EDUCATION IN WALBRZYCH	PL WALBRZY04
	UNIWERSYTET RZESZOWSKI	PL RZESZOW02
	UNIVERSITY OF GDANSK	PL GDANSK01
	ALCIDE DE GASPERI UNIVERSITY OF EUROREGIONAL ECONOMY	PL JOZEFOW01
	UNIVERSITY OF ZIELONA GORA	PL ZIELONA01
	RADOM ACADEMY OF ECONOMICS	PL RADOM04
	GEA COLLEGE CVS DRUZBA ZA VISJESOLSKO IZOBRAZEVANJE- CENTER VISJIH SOL, D.O.O.	SI LJUBLJA07
	UNIVERSIDAD REY JUAN CARLOS	E MADRID 26
	UNIVERSIDAD DE VALLADOLID	E VALLADO01
	SULEYMAN DEMIREL UNIVERSITY	TR ISPARTA01
OKAN UNIVERSITY	TR ISTANBU22	
<b>Economics</b>	GOCE DELCEV UNIVERSITY	MK STIP01
	POLITECHINKA CZESTOCHOWSKA	PL CZESTOC01
	STANISLAW STASZIC STATE SCHOOL OF HIGHER VOCATIONAL EDUCATION IN PILA	PL PILA02
	THE WITELON UNIVERSITY OF APPLIED SCIENCES IN LEGNICA	PL LEGNICA01
	UNIVERSITY OF LODZ	PL LODZ01
	UNIWERSYTET RZESZOWSKI	PL RZESZOW02
	RADOM ACADEMY OF ECONOMICS	PL RADOM04
	STATE HIGHER VOCATIONAL SCHOOL IN WALCZ	PL WALCZ01
	UNIVERSITY OF SZCZECIN	PL SZCZECI01
	UNIVERSITY OF HUELVA	E HUELVA 01
	OKAN UNIVERSITY	TR ISTANBU22
	CELAL BAYAR UNIVERSITESI, MANISA	TR MANISA01
<b>Education</b>	JOSIP JURAJ STROSSMAYER UNIVERSITY OF OSIJEK	HR OSIJEK01
	UNIVERSITE DE CAEN BASSE-NORMANDIE	F CAEN 01
	UNIVERSITY OF WESTERN MACEDONIA	G KOZANIO2
	UNIVERSITA DEGLI STUDI DI SALERNO	I SALERNO01
	KLAIPEDA STATE COLLEGE	LT KLAIPED09
	GOCE DELCEV UNIVERSITY	MK STIP01
	THE NORWEGIAN UNIVERSITY OF SCIENCE AND TECHNOLOGY	NO TRONDHE01
	UNIWERSYTET RZESZOWSKI	PL RZESZOW02
	HOLY CROSS UNIVERSITY	PL KIELCE04
	UNIVERSITY OF ZIELONA GORA	PL ZIELONA01
	RADOM ACADEMY OF ECONOMICS	PL RADOM04
	STATE HIGHER VOCATIONAL SCHOOL IN WALCZ	PL WALCZ01
CATHOLIC UNIVERSITY IN RUZOMBEROK	SK RUZOMBE01	

	UNIVERSIDAD DE CASTILLA-MANCHA	E CIUDA-R01	
	ADIYAMAN UNIVERSITY	TR ADIYAMA01	
	BALIKESIR UNIVERSITESI	TR BALIKES01	
	KAHRAMANMARAS SUTCU IMAM UNIVERSITY	TR KAHRAMA01	
	FIRAT UNIVERSITY, ELAZIG	TR ELAZIG01	
	NIGDE UNIVERSITY	TR NIGDE01	
	CELAL BAYAR UNIVERSITESI, MANISA	TR MANISA01	
	UNIVERSITY OF PECS	HU PECS01	
<b>Electronics</b>	RYHR-UNIVERSITAT BOCHUM	D BOCHUM01	
	ALEXANDER TECHNOLOGICAL INSTITUTE OF THESSALONIKI	G THESSAL 12	
	KAUNAS UNIVERSITY OF TECHNOLOGY	LT KAUNAS 02	
	GOCE DELCEV UNIVERSITY	MK STIP01	
	SOR TRONDELAG UNIVERSITY COLLEGE	NO TRONDHE03	
	UNIVERSIDADE DA MADEIRA	P FUNCHAL03	
	UNIVERSITY OF MARIBOR	SI MARIBOR 01	
	FIRAT UNIVERSITY, ELAZIG	TR ELAZIG01	
<b>Philology</b>	UNIVERSIDADE NOVA DE LISBOA	P LISBOA03	
	VELIKOTURNOVSKI UNIVERSITET <<SV. KIRIL I METODII>>	BG-VELIKO01	
	UNIVERSITY OF HRADEC KRALOVE	CZ HRADEC01	
	AIX-MARSEILLE UNIVERSITE	F MARSEIL84	
	UNIVERSITA DEGLI STUDI DI FOGGIA	I FOGGIA03	
	UNIVERSITA DEGLI STUDI DEL PIEMONTE ORIENTALE "AMEDEO AVOGADRO"	I VERCCELL 01	
	KAUNAS UNIVERSITY OF TECHNOLOGY	LT KAUNAS 02	
	GOCE DELCEV UNIVERSITY	MK STIP01	
	THE NORWEGIAN UNIVERSITY OF SCIENCE AND TECHNOLOGY	NO TRONDHE01	
	ADAM MICKIEWICZ UNIVERSITY OF POZNAN	PL POZNAN01	
	PANSTWOWA WYZSZA SZKOLA ZAWODOWA W KROSNIE	PL KROSN001	
	POLITECHNIKA CZESTOCHOWSKA	PL CZESTOC01	
	STANISLAW STASZIC STATE SCHOOL OF HIGHER VOCATIONAL EDUCATION IN PILA	PL PILA02	
	THE ANGELUS SILESIOUS STATE SCHOOL OF HIGHER VOCATIONAL EDUCATION IN WALBRZYCH	PL WALBRZY04	
	THE WITELON UNIVERSITY OF APPLIED SCIENCES IN LEGNICA	PL LEGNICA01	
	UNIVERSITY OF LODZ	PL LODZ01	
	UNIVERSITY OF ECONOMY IN BYDGOSZCZ	PL BYDGOSZ06	
	HOLY CROSS UNIVERSITY	PL KIELCE04	
	UNIVERSITY OF ZIELONA GORA	PL ZIELONA01	
	HIGHER SCHOOL IN WARSAW	PL WARSZAW61	
	UNIVERSIDADE DA MADEIRA	P FUNCHAL03	
	UNIVERSITY OF PRIMORSKA	SI KOPER03	
	BALIKESIR UNIVERSITESI	TR BALIKES01	
	CELAL BAYAR UNIVERSITESI, MANISA	TR MANISA01	
	<b>Finance-Banking</b>	UNIVERSITY OF MACEDONIA DEP. OF BUSINESS ADMINISTRATION	G THESSAL02
		GOCE DELCEV UNIVERSITY	MK STIP01
POLITECHNIKA CZESTOCHOWSKA		PL CZESTOC01	
STANISLAW STASZIC STATE SCHOOL OF HIGHER VOCATIONAL EDUCATION IN PILA		PL PILA02	
<b>Computer Science</b>	UNIVERSITY OF SZCZECIN	PL SZCZECI01	
	CLAUSTHAL UNIVERSITY OF TECHNOLOGY	D CLAUSTH 01	
	UNIVERSITY OF WESTERN MACEDONIA	G KOZANI02	
	ALEXANDER TECHNOLOGICAL INSTITUTE OF THESSALONIKI	G THESSAL 12	
	KAUNAS UNIVERSITY OF TECHNOLOGY	LT KAUNAS 02	



	GOCE DELCEV UNIVERSITY	MK STIP01
	NESNA UNIVERSITY COLLEGE	NO NESNA01
	EINDHOVEN UNIVERSITY OF TECHNOLOGY	NL EINHOV17
	POLITECHINKA CZESTOCHOWSKA	PL CZESTOC01
	STANISLAW STASZIC STATE SCHOOL OF HIGHER VOCATIONAL EDUCATION IN PILA	PL PILA02
	THE WITELON UNIVERSITY OF APPLIED SCIENCES IN LEGNICA	PL LEGNICA01
	UNIVERSITY OF ECONOMY IN BYDGOSZCZ	PL BYDGOSZ06
	RADOM ACADEMY OF ECONOMICS	PL RADOM04
	STATE HIGHER VOCATIONAL SCHOOL IN WALCZ	PL WALCZ01
	UNIVERSITY OF SZCZECIN	PL SZCZECI01
	UNIVERSIDADE DA MADEIRA	P FUNCHA03
	UNIVERSIDADE NOVA DE LISBOA	P LISBOA03
	ISTANBUL GELISIM MESLEK YUKSEKOKULU	TR ISTANBU32
	UNIVERSITY OF MISKOLC	HU MISKOLC01
<b>Environmental Engineering</b>	UNIVERSITY OF IOANNINA	G IOANNIN01
	GOCE DELCEV UNIVERSITY	MK STIP01
	POLITECHINKA CZESTOCHOWSKA	PL CZESTOC01
<b>Engineering</b>	UNIVERSIDAD DE LA LAGUNA	E TENERIF01
	JOSIP JURAJ STROSSMAYER UNIVERSITY OF OSIJEK	HR OSIJEK01
	CLAUSTHAL UNIVERSITY OF TECHNOLOGY	D CLAUSTH 01
	STATE HIGHER VOCATIONAL SCHOOL IN WALCZ	PL WALCZ01
	UNIVERSIDAD REY JUAN CARLOS	E MADRID 26
	ADİYAMAN UNIVERSITY	TR ADIYAMA01
<b>Civil Engineering</b>	BINGOL UNIVERSITY	TR BINGOL01
	SOR TRONDELAG UNIVERSITY COLLEGE	NO TRONDHE03
<b>Art History</b>	UNIVERSITÄT KOBLENZ-LANDAU	D KOBLENZ 02
<b>History</b>	VELIKOTURNOVSKI UNIVERSITET <<SV. SV. KIRIL I METODII>>	BG-VELIKO01
	UNIVERSITY OF HRADEC KRALOVE	CZ HRADEC01
	UNIVERZITA PALACKEHO V OLOMOUCI	CZ OLOMOUC01
	SAPIENZA UNIVERSITA DI ROMA	I-ROMA 01
	GOCE DELCEV UNIVERSITY	MK STIP01
	THE NORWEGIAN UNIVERSITY OF SCIENCE AND TECHNOLOGY	NO TRONDHE01
	ADAM MICKIEWICZ UNIVERSITY OF POZNAN	PL POZNAN01
	UNIVERSITY OF WROCLAW	PL WROCLAW01
	UNIVERSITY OF ZIELONA GORA	PL ZIELONA01
	CONSTANTINE THE PHILOSOPHER UNIVERSITY IN NITRA	SK NITRA01
<b>History and Archaeology</b>	UNIVERSITY OF PELOPONNESE	G TRIPOLI03
	UNIVERSITY OF LODZ	PL LODZ01
	UNIWERSYTET RZESZOWSKI	PL RZESZOW02
	UNIWERSYTET KARDYNAŁA STEFANA WYSZYŃSKIEGO W WARSZAWIE	PL WARSZAW07
	CATHOLIC UNIVERSITY IN RUZOMBEROK	SK RUZOMBE01
	UNIVERSITÄT DE LLEIDA	E LLEIDA01
	UNIVERSIDAD REY JUAN CARLOS	E MADRID 26
	FIRAT UNIVERSITY, ELAZIG	TR ELAZIG01
<b>Marketing</b>	GOCE DELCEV UNIVERSITY	MK STIP01
	POLITECHINKA CZESTOCHOWSKA	PL CZESTOC01
	UNIVERSITY OF SZCZECIN	PL SZCZECI01
	AMASYA UNIVERSITY	TRAMASYA01

<b>Mathematics</b>	NESNA UNIVERSITY COLLEGE	NO NESNA01
	UNED	E MADRID 01
	ULUDAG UNIVERSITESI	TR BURSA01
	DICLE UNIVERSITY	TR DIYARBA01
	AKDENIZ UNIVERSITESI	TR ANTALYA 01
	ADIYAMAN UNIVERSITY	TR ADIYAMA01
	BINGOL UNIVERSITY	TR BINGOL01
	FIRAT UNIVERSITY, ELAZIG	TR ELAZIG01
	CELAL BAYAR UNIVERSITESI, MANISA	TR MANISA01
<b>Sport</b>	UNIVERSITY OF PHYSICAL EDUCATION	PL POZNAN08
	UNIVERSITY OF PHYSICAL EDUCATION	PL POZNAN08
	HOLY CROSS UNIVERSITY	PL KIELCE04
	THE JERZY KUKUCZKA ACADEMY OF PHYSICAL EDUCATION	PL KATOWIC05
	STATE HIGHER VOCATIONAL SCHOOL IN WALCZ	PL WALCZ01
<b>Social Sciences</b>	UNIVERSITY OF HUELVA	E HUELVA 01
	UNIVERSITY OF HRADEC KRALOVE	CZ HRADEC01
	UNIVERSITA DEGLI STUDI DEL PIEMONTE ORIENTALE "AMEDEO AVOGADRO"	I VERCELL 01
	KAUNAS UNIVERSITY OF TECHNOLOGY	LT KAUNAS 02
	THE NORWEGIAN UNIVERSITY OF SCIENCE AND TECHNOLOGY	NO TRONDHE01
	ADAM MICKIEWICZ UNIVERSITY OF POZNAN	PL POZNAN01
	NICOLAUS COPERNICUS UNIVERSITY FACULTY OF LAW AND ADMINISTRATION	PL TORUN01
	STANISLAW STASZIC STATE SCHOOL OF HIGHER VOCATIONAL EDUCATION IN PILA	PL PILA02
	UNIWERSYTET RZESZOWSKI	PL RZESZOW02
	UNIVERSITY OF ECONOMY IN BYDGOSZCZ	PL BYDGOSZ06
	STATE HIGHER VOCATIONAL SCHOOL IN WALCZ	PL WALCZ01
	UNIVERSITY OF HUELVA	E HUELVA 01
	UNIVERSIDAD REY JUAN CARLOS	E MADRID 26
	SULEYMAN DEMIREL UNIVERSITY	TR ISPARTA01
	ADIYAMAN UNIVERSITY	TR ADIYAMA01
	<b>Earth Sciences</b>	BINGOL UNIVERSITY
FIRAT UNIVERSITY, ELAZIG		TR ELAZIG01
CLAUSTHAL UNIVERSITY OF TECHNOLOGY		D CLAUSTH 01
<b>Theology</b>	UNIVERSITY OF IOANNINA	G IOANNIN01
	OBUDA UNIVERSITY	HU BUDAPES16
	NEPOLIS UNIVERSITY PAFOS	CY PAFOS01
	OTTO-FRIEDRICH UNIVERSITAT BAMBERG	D BAMBERG01
	UNIVERSITAT KOBLENZ-LANDAU	D KOBLENZ 02
<b>Occupational Therapy</b>	UNIVERSITY OF MALTA	MT MALTA01
	UNIWERSYTET MARIII CURIE-SKLODOWSKIEJ	PL-LUBLIN 01
<b>Tourism</b>	POLITECHINKA CZESTOCHOWSKA	PL CZESTOC01
	MUSTAFA KEMAL UNIVERSITY	TR HATAY01

# Erasmus+ International Credit Mobility Partner Institutions

Country	Partner Institution	Mobility Flows	Subject Area
BOSNIA AND HERZEGOVINA	International Burch University	2 Incoming Mobility for Studies, 1 <sup>st</sup> and 3 <sup>rd</sup> study Cycle	Languages and Literature; Finance and Banking; Information and Communication Technologies.
	University of Zenica	2 Incoming Mobility for Studies, 1 <sup>st</sup> study Cycle	Languages and Literature; Education Science
Montenegro	University of Montenegro	4 Incoming Mobility for Studies, 1 <sup>st</sup> study Cycle	Languages and Literature; Education Science; Business Administration; Social Sciences
Serbia	Megatrend University	2 Incoming Mobility for Studies, 1 <sup>st</sup> study Cycle	Business Administration
	University of Novi Sad	3 Incoming Mobility for Studies, 1 <sup>st</sup> , 2 <sup>nd</sup> and 3 <sup>rd</sup> study Cycle	Languages and Literature; Finance and Banking; Business Administration; Law; Sports; Environmental Sciences
Uzbekistan	Tashkent Chemical-Technological Institute	2 Incoming Mobility for Studies, 1 <sup>st</sup> , 2 <sup>nd</sup> study Cycle	Environmental Sciences

# Mini Glossary

## Time

today	astăzi
yesterday	ieri
tomorrow	măine
morning	dimineață
evening	seară
night	noapte
day	ziua
Monday	luni
Tuesday	marți
Wednesday	miercuri
Thursday	joi
Friday	vineri
Saturday	sâmbătă
Sunday	duminică
public holiday	zi de sărbătoare

## In the city

street	stradă
square	piață
park	parc
bus stop	stație de autobuz
train station	gară
market	piață
post office	poștă
stamp	timbru
embassy	ambasada
ATM	bancomat

## Basis

hello	Bună ziua
good morning	Bună dimineața
good evening	Bună seara
good night	Noapte bună
good bye	La revedere
thank you	Mulțumesc
Yes / No	Da / Nu
Please	Vă rog
Excuse me	Scuzați-mă
Where ?	Unde ?
When ?	Când ?
How much ?	Cât ?
Why ?	De ce ?
How are you ?	Ce mai faceți ?
I don't understand	Nu înțeleg
I don't speak Romanian	Nu vorbesc românește

Could you write it ?  
What does ... mean?  
My pleasure

## Daily life

Mrs.	Doamna
Mr.	Domnul
schedule	orar
open	deschis
close	închis
public WC	WC public / toaletă publică
taxi	taxi
tramway	tramvai
subway	metrou

## Emergencies

hospital	spital
doctor	doctor
pharmacy	farmacie
police	poliție
Could you help me?	M-ați putea ajuta?

## Accommodation

hotel	hotel
pension	pensiune
double bedroom	o cameră dublă
simple bedroom	o cameră de o persoană / simplă
	cu baie
with bathroom	fără baie
without bathroom	Este inclus micul dejun?
Is the breakfast included?	

## At the restaurant

restaurant	restaurant
breakfast	mic dejun
lunch	prânz
dinner	cină
menu	menu
the bill	nota
beer	bere
café	cafea
tea	ceai
wine	vin

still water  
mineral water  
cheese  
salty cheese  
desert  
fruits  
milk  
vegetables  
bread  
fish  
meat  
pepper  
salt  
soup  
sour soup  
salad  
(without) sugar

### Visits

lake  
sea  
beach  
mountain  
monastery  
church  
(outside) museum

### Directions and transportation

Where is ... ?  
I am looking for ...  
Is it far?  
left  
right  
straight ahead  
arrival / departure  
entrance / exit  
north  
south  
east  
west  
petrol station  
road  
highway  
bridge  
train  
ticket

apă plată  
apă minerală  
brânză / cașcaval  
telemea  
desert  
fructe  
lapte  
legume  
pâine  
pește  
carne  
piper / ardei  
sare  
supă  
ciorbă  
salată  
(fără) zahăr

lac  
mare  
plajă  
munte  
mănăstire  
biserică  
muzeu (în aer  
liber)

Unde este ... ?  
Caut ...  
E departe?  
Stânga  
Dreapta  
Drept înainte  
Sosire / Plecare  
Intrare / Ieșire  
nord  
sud  
est  
vest  
benzinărie  
drum  
autostradă  
pod  
tren  
bilet

ticket office  
platform  
airport

ghișeu  
peron  
aeroport

At what time arrives / leaves ...?

La ce oră sosește / pleacă ...?

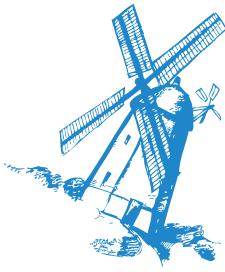
I would like a ticket for a one way (round-trip)  
for...

Aș dori un bilet dus (dus-întors)

până la ...

### Numbers

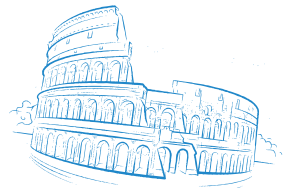
0	zero
1	unu
2	doi
3	trei
4	patru
5	cinci
6	șase
7	șapte
8	opt
9	nouă
10	zece
11	unsprezece
12	doisprezece
20	douăzeci
21	douăzeci și unu
.....	.....
100	o sută
101	o sută unu
200	două sute
1 000	o mie



Erasmus+

Changing lives. Opening minds.

Erasmus+



"1 Decembrie 1918"  
University of Alba Iulia  
Romania