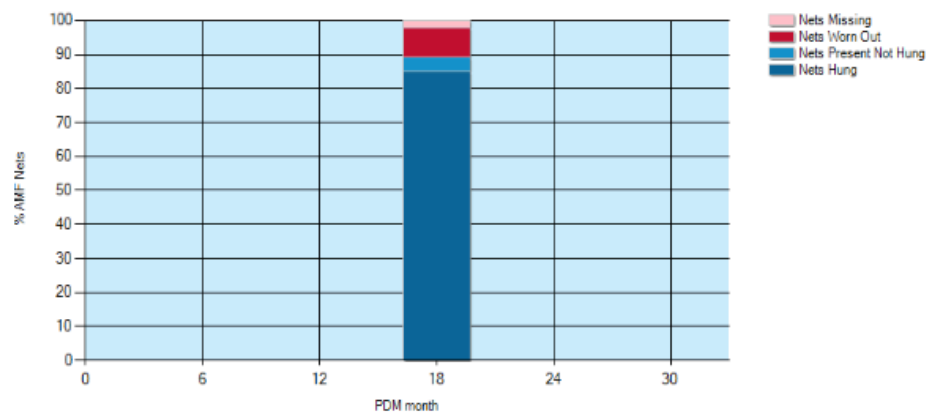
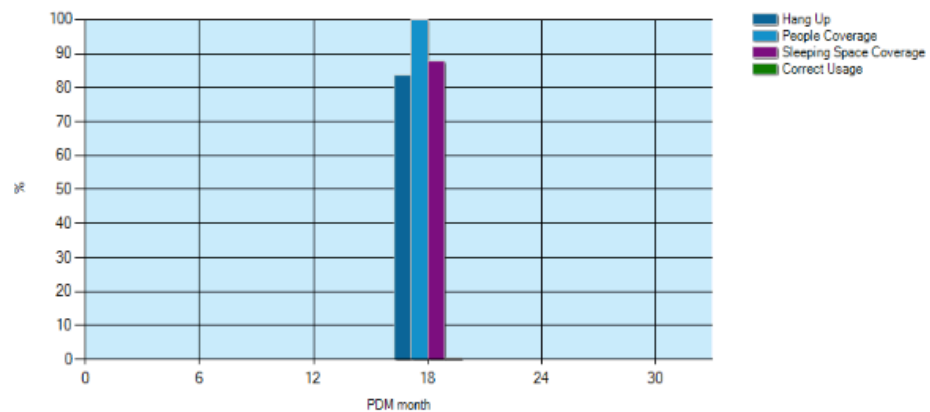


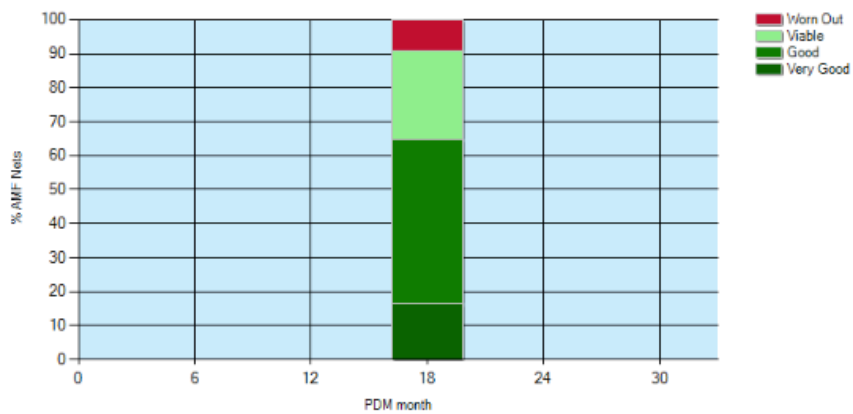
Net Presence



Net Usage



Net Condition





Default PDM: 18

## PDM - Detailed Results

The table below shows the aggregated data entered for each region, district, sub-district and community. Click on a location to drill down to view the statistics for the locations below it.

At a glance

Individual PDMs

PDM

18 month PDM

Sort by

Location

Presence

Coverage

Usage

Condition

Miscellaneous data

Comments

Accountability

	AMF Nets										AMF Olyset nets										Total	#	
	Total	Very Good		Good		Viable		Worn out		Rating	Total	Very Good		Good		Viable		Worn out		Rating			
Region	Total	#	%	#	%	#	%	#	%	Rating	Total	#	%	#	%	#	%	#	%	Rating	Total	#	
Summary →	34,560	5,620	16	16,799	49	8,979	26	3,162	9	57	0	0	0	0	0	0	0	0	0	0	0	34,560	5,620
Centrale	6,817	462	7	2,417	35	3,153	46	785	12	53	0	0	0	0	0	0	0	0	0	0	6,817	462	
Kara	10,421	863	8	5,857	56	2,566	25	1,135	11	55	0	0	0	0	0	0	0	0	0	0	10,421	863	
Plateaux	7,801	2,470	32	3,715	48	1,105	14	511	7	62	0	0	0	0	0	0	0	0	0	0	7,801	2,470	
Savanes	9,521	1,825	19	4,810	51	2,155	23	731	8	58	0	0	0	0	0	0	0	0	0	0	9,521	1,825	



Default PDM: 18

## PDM - Detailed Results

The table below shows the aggregated data entered for each region, district, sub-district and community. Click on a location to drill down to view the statistics for the locations below it.

At a glance

Individual PDMs

PDM

18 month PDM

Sort by

Location

Presence

Coverage

Usage

Condition

Miscellaneous data

Comments

Accountability

Region	Sleeping spaces			People		
	#	Covered	%	#	Covered	%
<b>Summary →</b>	<b>36,389</b>	<b>31,872</b>	<b>88</b>	<b>65,130</b>	<b>66,193</b>	<b>100</b>
Centrale	7,337	6,127	84	13,417	14,220	100
Kara	10,533	9,356	89	17,463	18,159	100
Plateaux	8,470	7,513	89	15,847	14,048	89
Savanes	10,049	8,876	88	18,403	19,766	100



Default PDF

## PDM - Detailed Results

The table below shows the aggregated data entered for each region, district, sub-district and community. Click on a location to drill down to view the statistics for the locations below it.

At a glance

Individual PDMs

PDM

18 month PDM

Sort by

Location

Presence

Coverage

Usage

Condition

Miscellaneous data

Comments

Accountability

Region	Households		Forms Signed		Sleeping Spaces		People		AMF Nets										
	Target	#	%	#	%	#	#/hh	#	#/ss	Nets Received	Hung		Present not hung		Missing		Worn out/ not usable		M + WO
										#	#	%	#	%	#	%	#	%	%
Summary →	14,052	13,666	97	36,389	2.59	65,130	1.79	36,888	30,884	84	1,538	4	792	2	3,162	9	11		
Centrale	2,781	2,764	99	7,337	2.64	13,417	1.83	7,351	5,962	81	292	4	205	3	785	11	13		
Kara	3,933	3,706	94	10,533	2.68	17,463	1.66	10,715	9,058	85	239	2	143	1	1,135	11	12		
Plateaux	3,583	3,442	96	8,470	2.36	15,847	1.87	8,815	7,289	83	582	7	357	4	511	6	10		
Savanes	3,755	3,754	100	10,049	2.68	18,403	1.83	10,007	8,575	86	425	4	87	1	731	7	8		





Default PDM: 18

## PDM - Detailed Results

The table below shows the aggregated data entered for each region, district, sub-district and community. Click on a location to drill down to view the statistics for the locations below it.

At a glance

Individual PDMs

PDM

18 month PDM

Sort by

Location

Presence

Coverage

Usage

Condition

Miscellaneous data

Comments

Accountability

Region	Nets Used				Household used				People sleeping under nets								
	Correctly		Not Correctly		Correctly		Not correctly		Children under 5		Children 5 to 18		Pregnant women		Other adults		Total
	#	%	#	%	#	%	#	%	#	%	#	%	#	%	#	%	#
<b>Summary →</b>	41	100	0	0	0	0	0	0	13,053	20	23,155	35	1,822	3	28,163	43	66,193
<a href="#">Centrale</a>	15	100	0	0	0	0	0	0	2,952	21	4,826	34	345	2	6,097	43	14,220
<a href="#">Kara</a>	5	100	0	0	0	0	0	0	3,205	18	6,280	35	538	3	8,136	45	18,159
<a href="#">Plateaux</a>	14	100	0	0	0	0	0	0	2,491	18	4,981	35	324	2	6,252	45	14,048
<a href="#">Savanes</a>	7	100	0	0	0	0	0	0	4,405	22	7,068	36	615	3	7,678	39	19,766