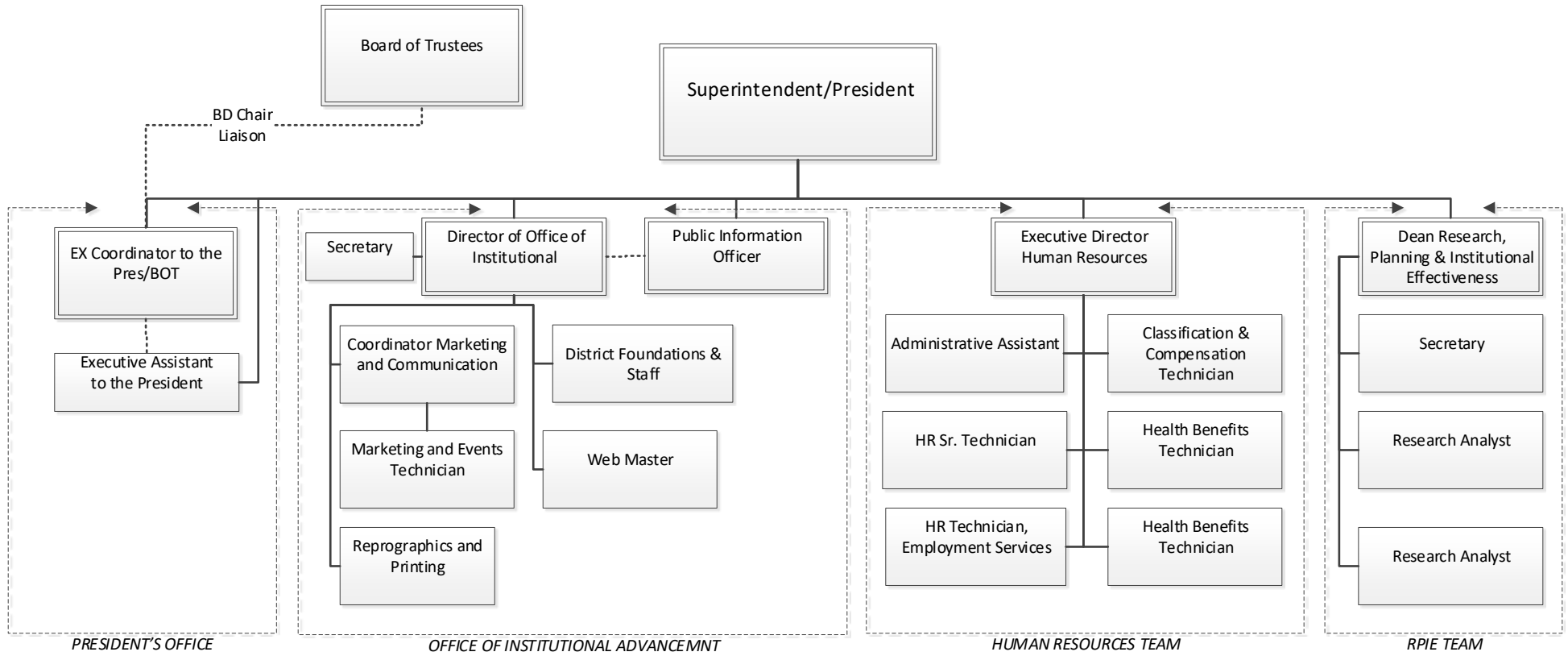
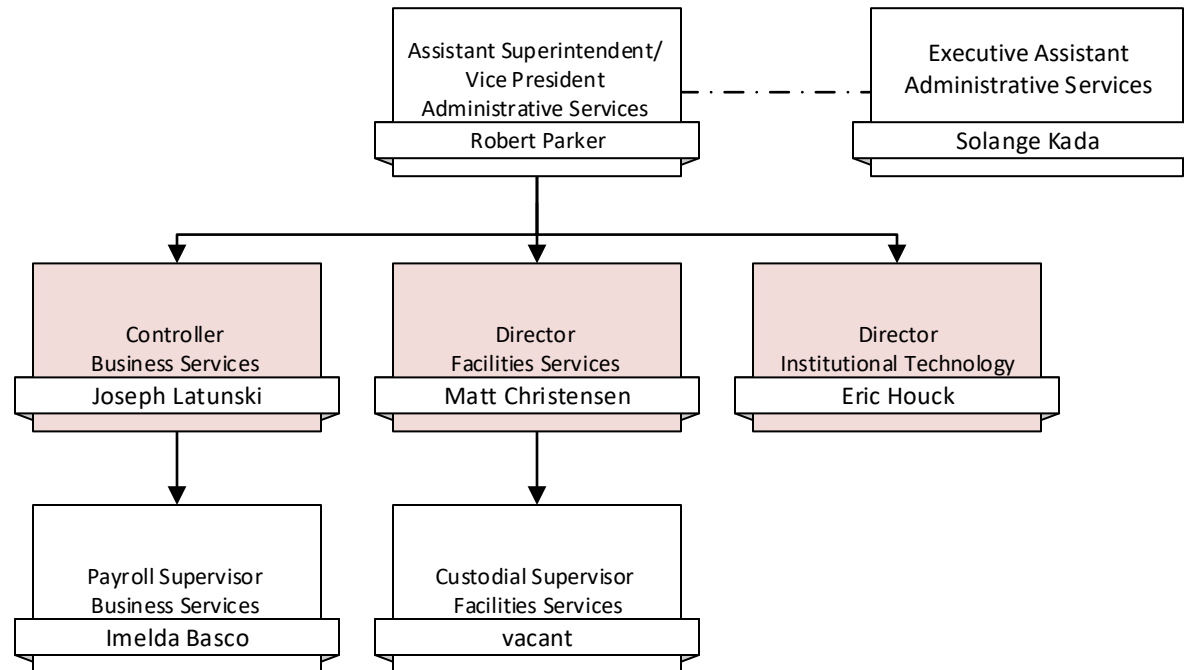
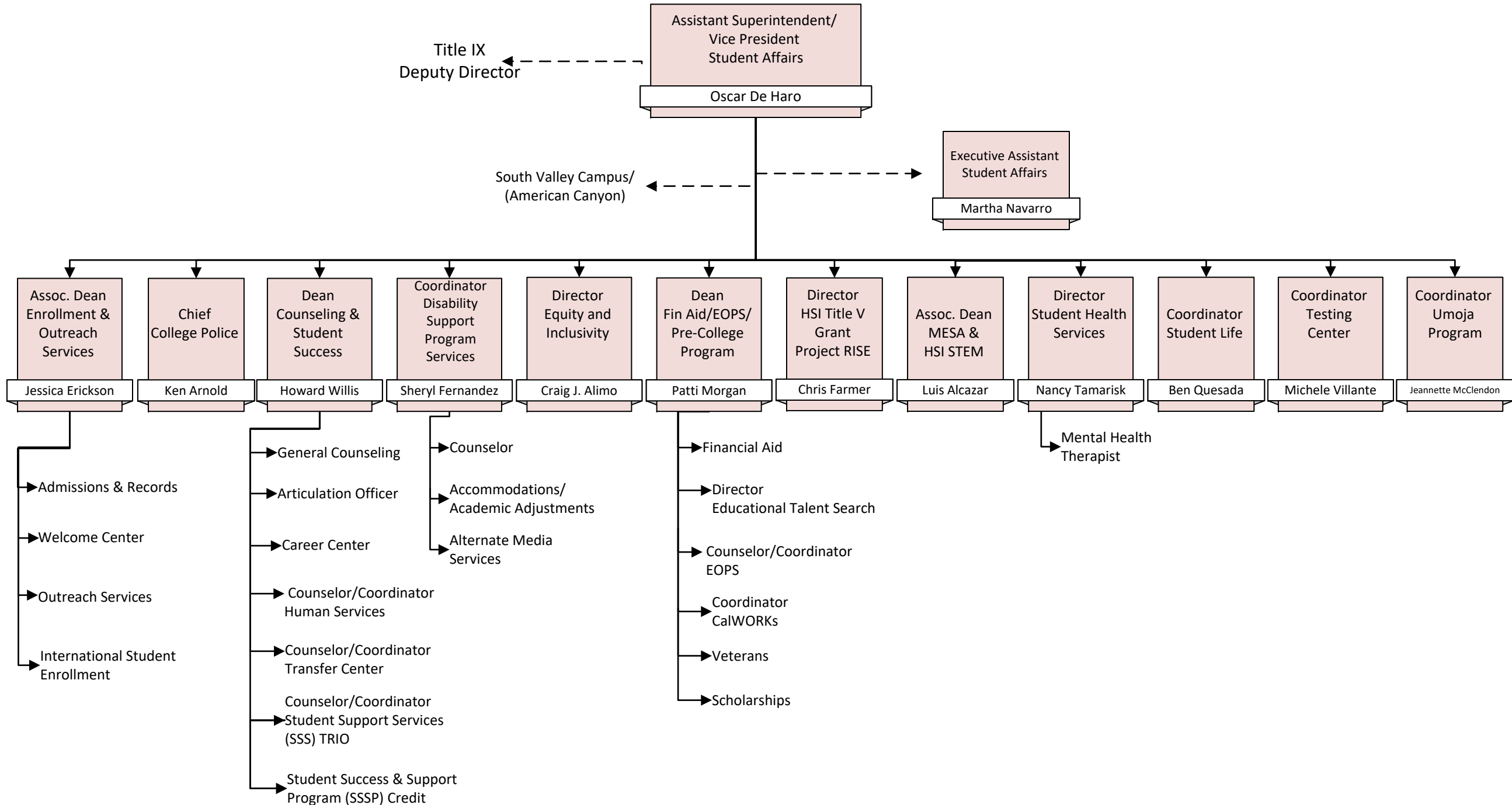


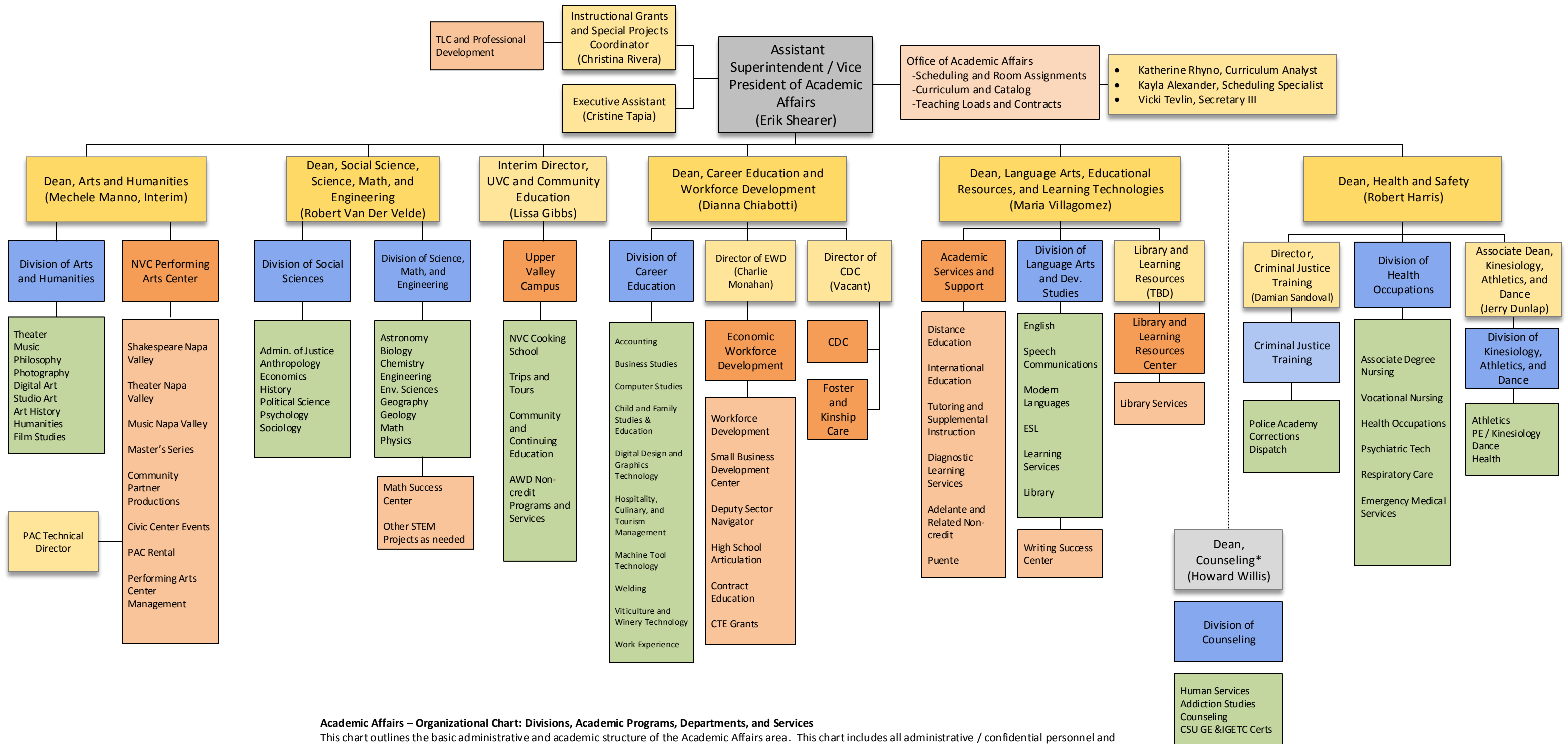
PRESIDENT'S AREA





**STUDENT AFFAIRS UNIT**





**Academic Affairs – Organizational Chart: Divisions, Academic Programs, Departments, and Services**

This chart outlines the basic administrative and academic structure of the Academic Affairs area. This chart includes all administrative / confidential personnel and division chairs, but does not include faculty coordinators, contract faculty, or adjunct faculty positions. These positions are included on a separate personnel chart and the org charts for the division(s), organized by dean. \*Dean responsible for counseling reports to the VP of Student Affairs. This chart is color-coded as follows:

- Dean
- Assistant Dean, Director, Confidential
- Academic Division
- Academic departments, programs, or areas of study
- Support, co-curricular, or administrative service, program, or function
- Subsidiary support, co-curricular, or administrative service, program, or function
- Counseling services and programs, report to Student Affairs

September 4, 2018