



BRIEFING TO COMMITTEE A

Ebola Outbreak Response

IN THE DEMOCRATIC REPUBLIC OF THE CONGO

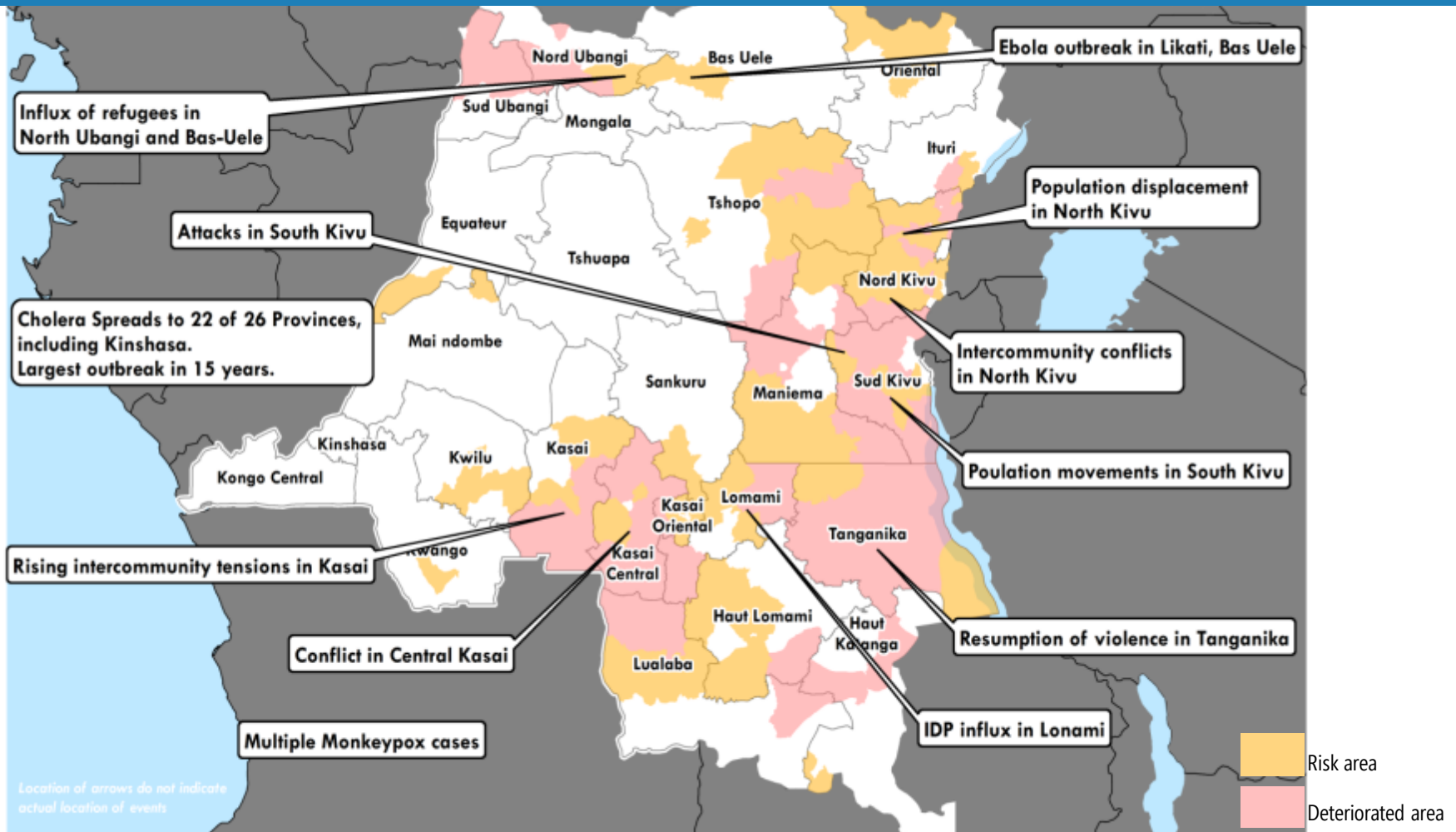
23 MAY 2018 | WORLD HEALTH ASSEMBLY



World Health
Organization

HEALTH
EMERGENCIES
programme

Humanitarian Context

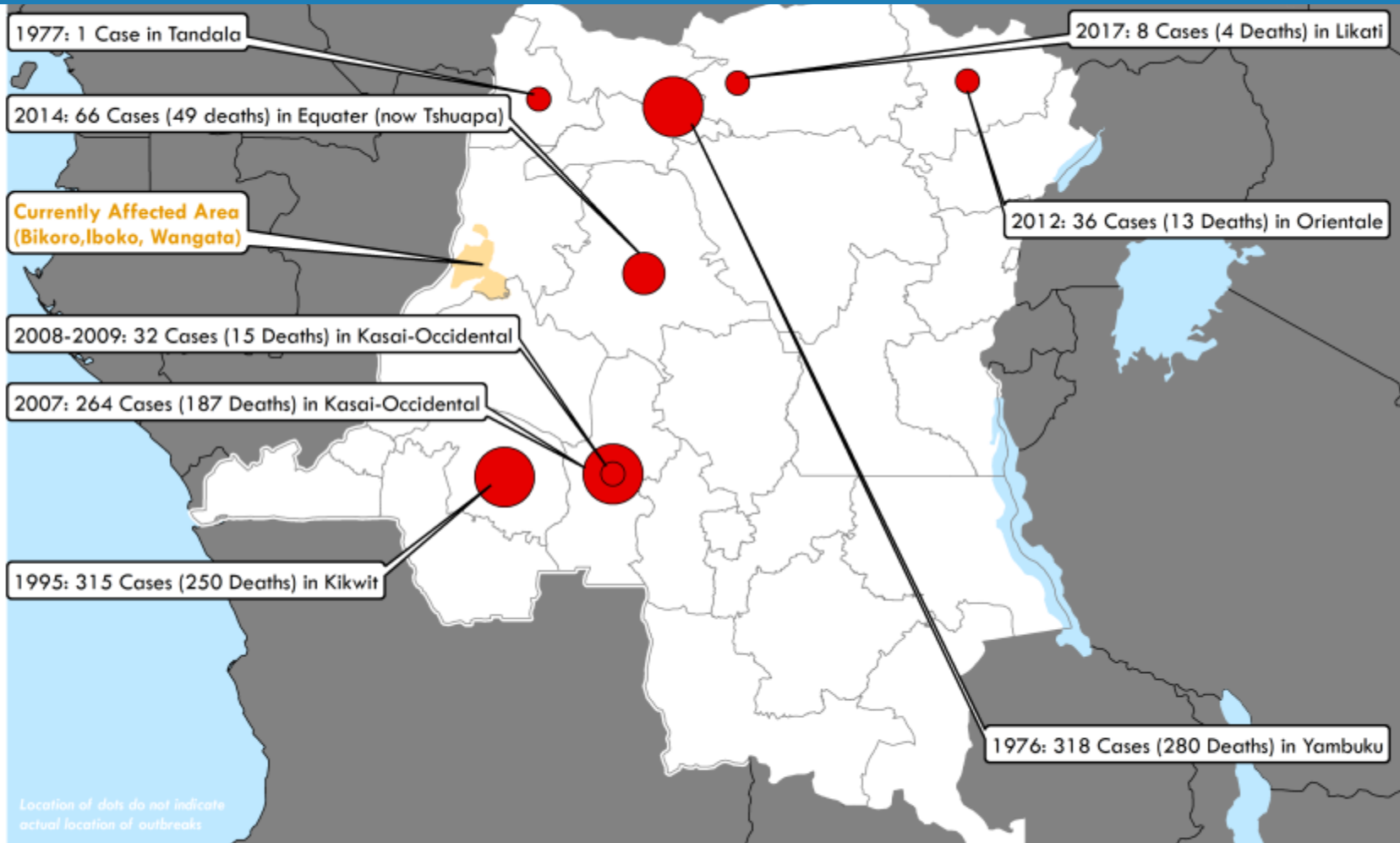


World Health Organization

DISCLAIMER: The boundaries and names shown and the designations used on this map do not imply the expression of any opinion whatsoever on the part of the World Health Organization concerning the legal status of any country, territory, city or area or of its authorities, or concerning the delimitation of its frontiers or boundaries. Dotted and dashed lines on maps represent approximate border lines for which there may not yet be full agreement. Data source: World Health Organization. Map production: WHO Health Emergencies Programme

HEALTH
EMERGENCIES
programme

Past Ebola Virus Outbreaks Since 1976



**World Health
Organization**

DISCLAIMER: The boundaries and names shown and the designations used on this map do not imply the expression of any opinion whatsoever on the part of the World Health Organization concerning the legal status of any country, territory, city or area or of its authorities, or concerning the delimitation of its frontiers or boundaries. Dotted and dashed lines on maps represent approximate border lines for which there may not yet be full agreement. Data source: World Health Organization. Map production: WHO Health Emergencies Programme

HEALTH
EMERGENCIES
programme

Epidemiology Update

As of 21 May 2018

58 cases including 27 deaths

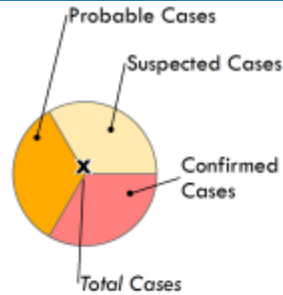
- 28 confirmed
- 9 suspected
- 21 probable

628 contacts listed



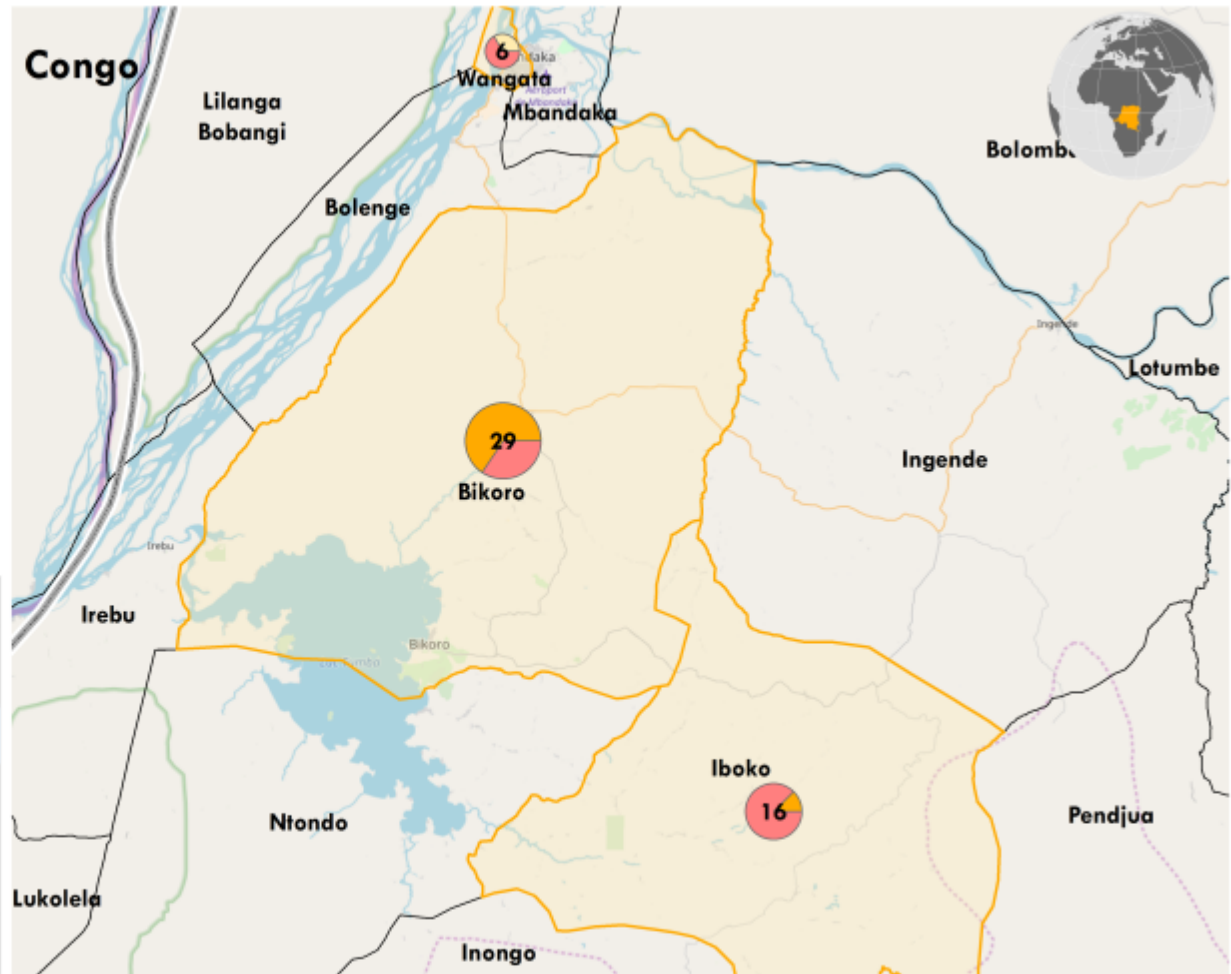
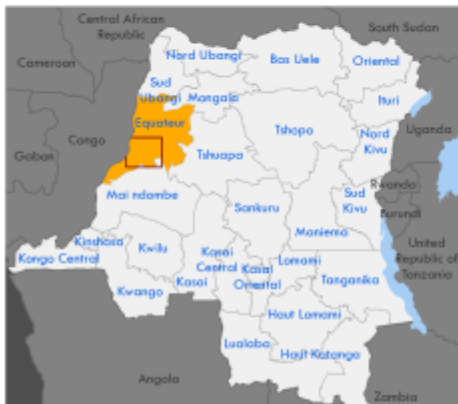
Ebola Cases by Health Zone in Equateur Province

Map date: 22 May 2018



- National boundary
- Affected Health Zones
- Health Zones

Boundaries and Locations Subject to Confirmation



World Health Organization

DISCLAIMER: The boundaries and names shown and the designations used on this map do not imply the expression of any opinion whatsoever on the part of the World Health Organization concerning the legal status of any country, territory, city or area or of its authorities, or concerning the delimitation of its frontiers or boundaries. Dotted and dashed lines on maps represent approximate border lines for which there may not yet be full agreement. Data source: World Health Organization. Map production: WHO Health Emergencies Programme

HEALTH
EMERGENCIES
programme

Pillars of Ebola Response

**LABORATORY
TESTING**

**RESEARCH
RESPONSE
INCLUDING
VACCINE**

**RISK
COMMUNICATION**

SAFE BURIALS

COORDINATION

**CASE
MANAGEMENT
AND INFECTION
PREVENTION AND
CONTROL**

**SURVEILLANCE
AND CONTACT
TRACING**

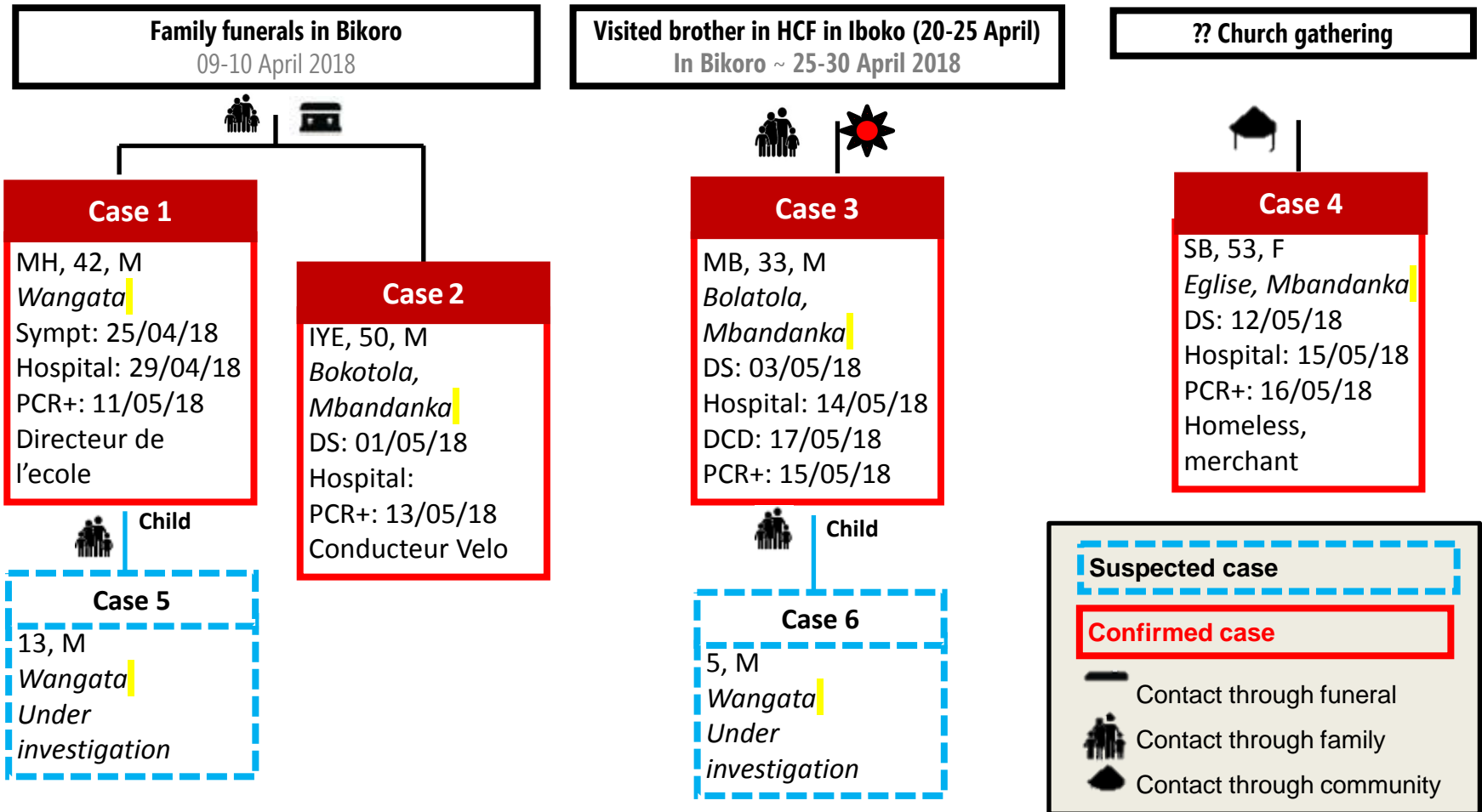
**OPERATIONAL
READINESS**



**World Health
Organization**

**HEALTH
EMERGENCIES**
programme

Chain of Transmission in Wangata



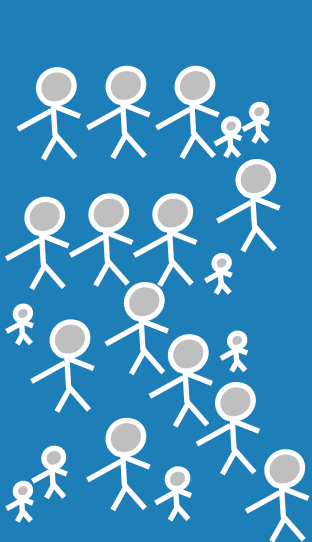
Vaccination Transport and Storage

Arktek™
storage to
transport the
vaccine at
-60 to -80 C

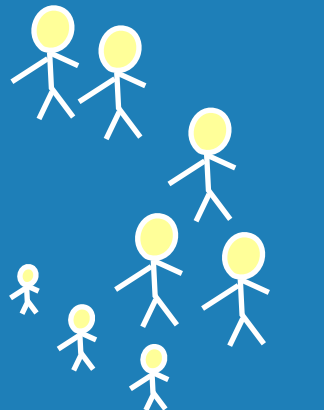


Ring Vaccination

Who is offered Ebola vaccine in a ring vaccination?
Contacts and contacts of contacts



Extended family



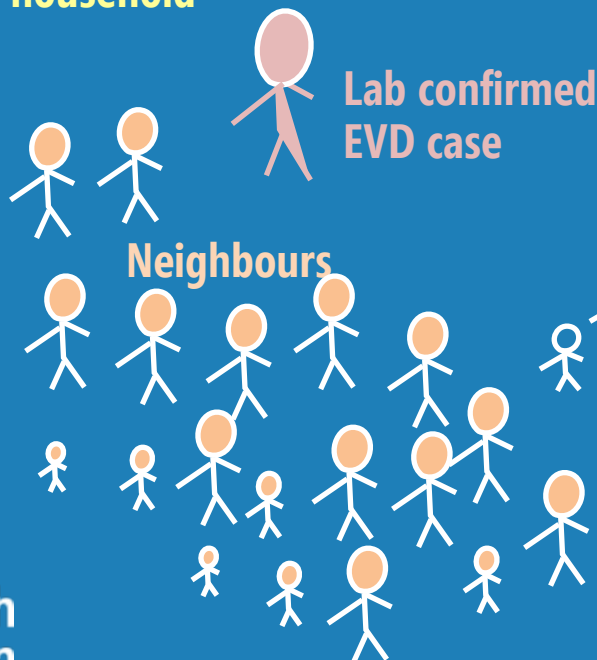
Lived in the same household



High risk contact:
close contact with patient
body or body fluids, linen,
or clothes

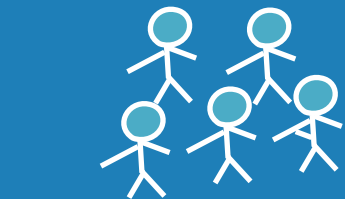


Household members
of high risk contacts

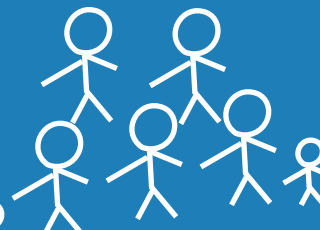


Lab confirmed
EVD case

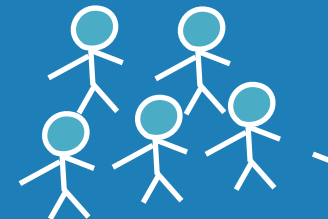
Neighbours



HCWs & FLWs in areas
at risk of expansion of
the outbreak



Visited the
symptomatic
patient



Local & international
HCWs & FLWs in the
affected areas

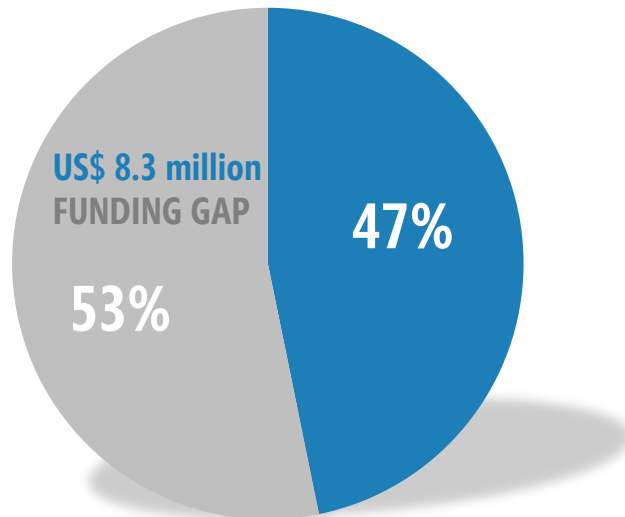


World Health
Organization

WHO Requirements and Funding

US\$ 15.6 million
REQUESTED

US\$ 7.3 million
FUNDED



STRATEGIC RESPONSE PLAN : \$25.9 million
OF WHICH WHO NEEDS ARE: \$15.6 million.

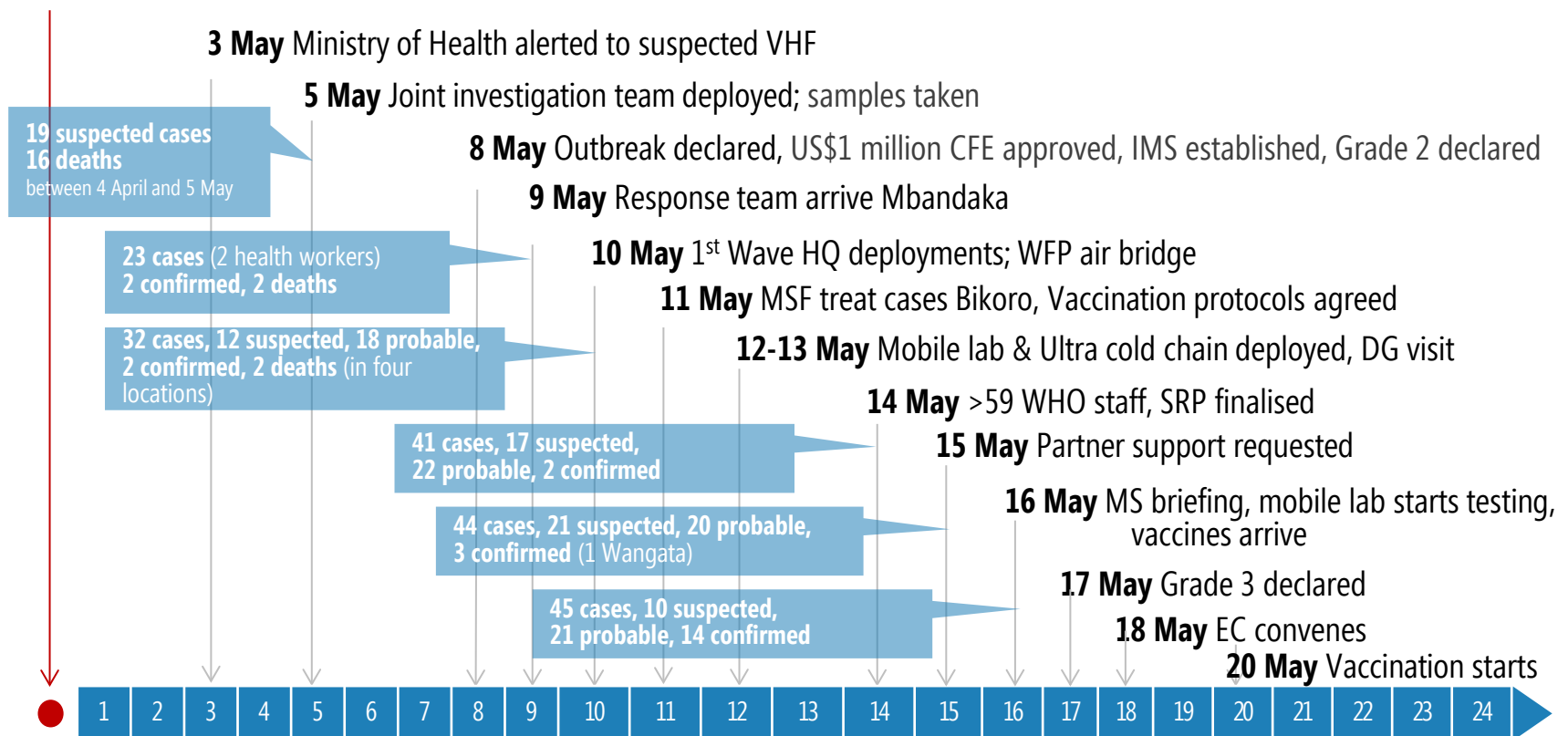
Thanks to : CERF, DFID, Gavi, Italy, USAID, and the Wellcome Trust

Further firm pledges: AfDB, Canada, ECHO, Germany, USAID, and the WB

DONOR ALERT ISSUED ON 10 MAY 2018

Response Timeline

INDEX CASE – date unknown





Thank you

Photo: WHO/E. Kabambi



World Health
Organization

HEALTH
EMERGENCIES
programme