

WHAT WE DO:

RIVER NAVIGATION AND SAFETY: Our port control centres, harbour masters, pilots and river patrol crews keep river users safe. Salvage operations and divers keep the river clear of obstructions and open for business. We are responsible for river traffic control, security and navigational safety, including buoys, beacons, bridge lights and channel surveys.

PLANNING CONSULTATION AND TECHNICAL EXPERTISE: We provide information, support and significant marine expertise to help river users and investors maximise the value of the river, and to do it safely. We license river works and dredging on the river, applying our expertise to keep the river safe and protect the environment.



BRING PEOPLE TOGETHER AND PROMOTE THE RIVER: We bring people together to discuss how to make the best use of the Thames and advocate its potential to those unfamiliar with it. We work with, and for, a wide range of stakeholders and partners on commercial freight, investment, property, safety, conservation, leisure, tourism, passenger transport, sporting pursuits and major events.

LOOK AFTER THE THAMES' ENVIRONMENT: We hold the tidal Thames in trust, with the goal of handing it on to succeeding generations in the same, or better condition. A major part of our work is conservancy of the Thames, dredging and maintaining the main navigation channels on the river. As stewards of the marine environment, we carefully look after the river's many assets, conserving wildlife, keeping the river clean and free of rubbish. We also promote the use of the river as a low-carbon means of transport.

COMMUNITY BENEFIT: As we operate for the benefit of stakeholders, not shareholders, we are able to generate a substantial benefit to the community, estimated to be £13.5 million in 2014.



VISION FOR THE TIDAL THAMES

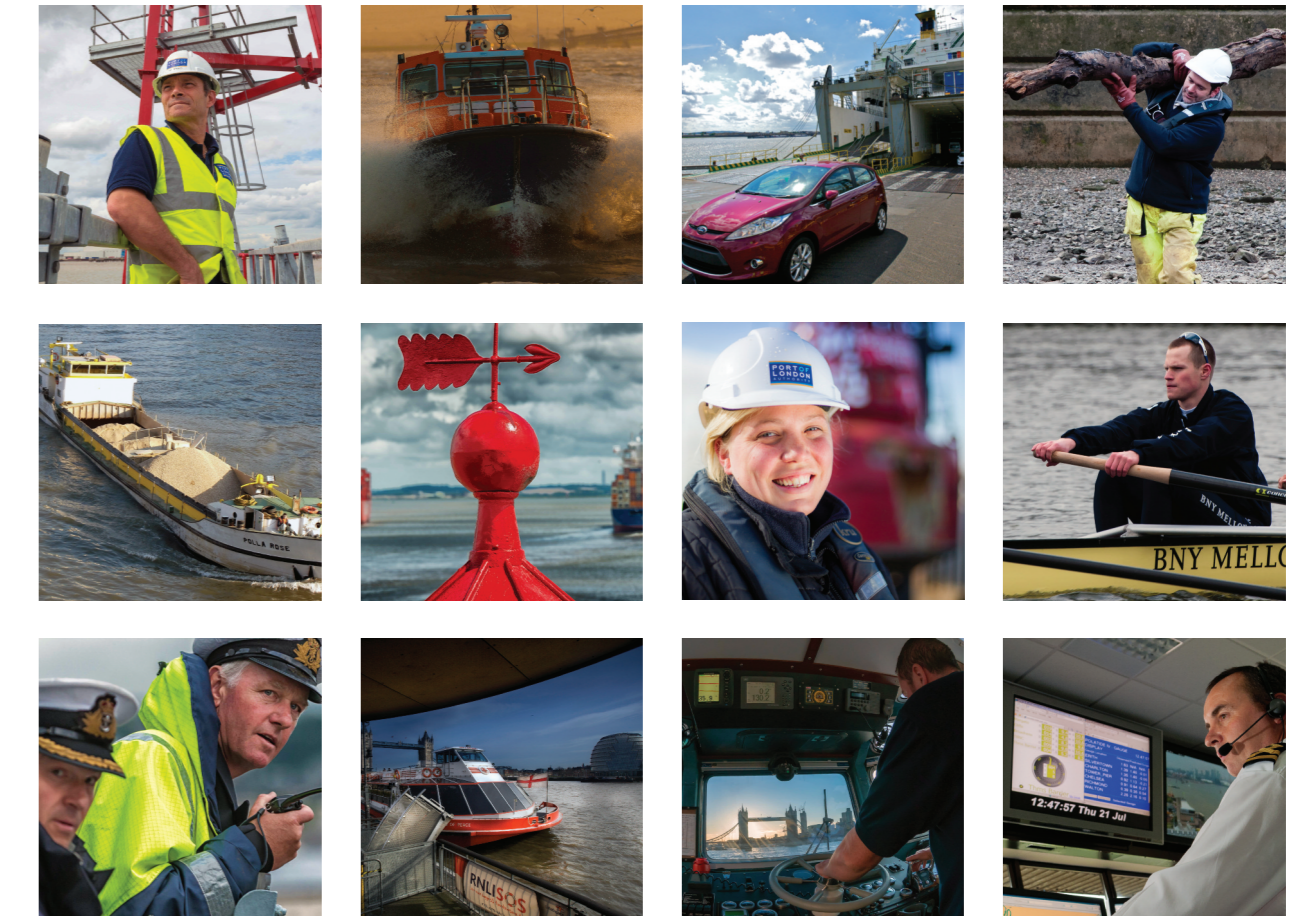
We're working with stakeholders to shape a Vision for development of the tidal Thames over the next 20 years.

Consultation and discussion will run through 2015, with the final Vision document published in Spring 2015.

To find out more visit: www.pla.co.uk/ThamesVision



www.pla.co.uk
[@LondonPortAuth](https://twitter.com/LondonPortAuth)
www.youtube.com/portoflondon
01474-562200



AT THE HEART OF TRADE, TRAVEL,
LEISURE AND SPORT ON THE THAMES



KEY FACTS:

TIDAL THAMES FACTS:

- 95 miles of river and estuary, from Teddington to the North Sea.
- The UK's second biggest port, handling 44.5 million tonnes of cargo each year, employing 46,000 people and contributing more than £3 billion to the economy annually.
- Britain's busiest inland waterway, carrying over 5 million tonnes of goods and materials, keeping over a quarter million lorry trips off roads.
- A growing commuter and tourist route used by almost 10 million people a year. New piers and vessels will underpin future growth, in line with the Mayor's River Action Plan.
- 83 sporting events, including the annual University Boat Race.

PLA FACTS:

- Operates river patrols between Southend and Teddington Lock, keeping people safe 365 days of the year.
- Runs 90 PLA pilots who board and guide more than 10,000 ships through the port annually.
- Has its own marine services team, including divers and salvage specialists, who keep the channels marked and clear for ships.
- Clears more than 200 tonnes of driftwood and rubbish from the river in central London annually. Supports Thames foreshore clean-up charity, Thames21.
- The most sophisticated in-house underwater survey capability of any UK port; mapping the depths of 400 square miles of shifting, changing riverbed.
- Ships' bridge simulator recreates more than 1,000 trips a year, training pilots on more than 70 different ship types.
- Self-financing authority, generating revenue from river users – no Government funding.

