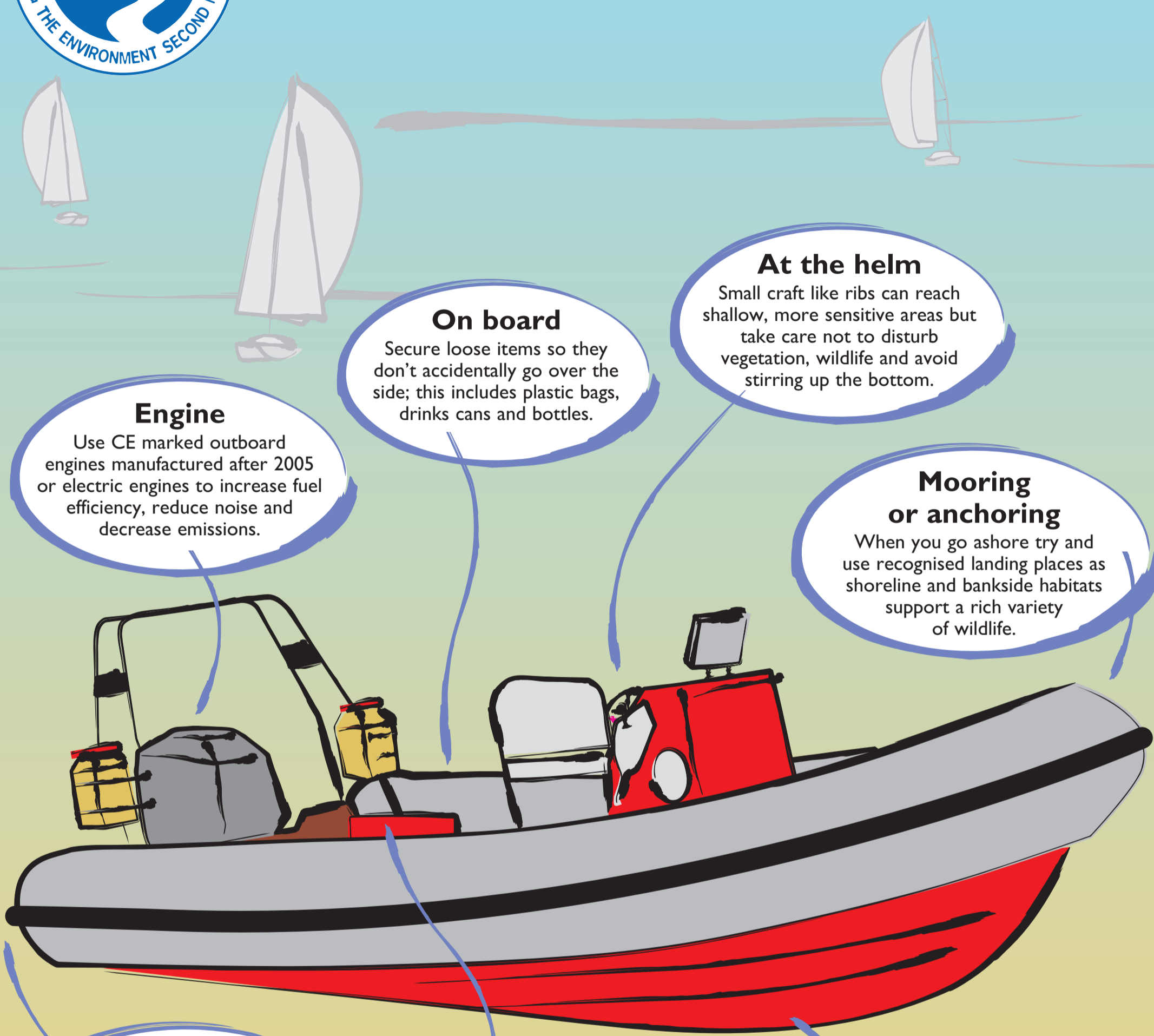




How to *green* your RIB!



Engine

Use CE marked outboard engines manufactured after 2005 or electric engines to increase fuel efficiency, reduce noise and decrease emissions.

On board

Secure loose items so they don't accidentally go over the side; this includes plastic bags, drinks cans and bottles.

At the helm

Small craft like ribs can reach shallow, more sensitive areas but take care not to disturb vegetation, wildlife and avoid stirring up the bottom.

Mooring or anchoring

When you go ashore try and use recognised landing places as shoreline and bankside habitats support a rich variety of wildlife.

Trailer

Help prevent the spread of alien species - drain and scrub all parts of the boat, trailer and equipment that came into contact with the water before leaving the area.

Re-fuelling

To help prevent spills, use a funnel or safety fill nozzle when pouring oil and fuel and keep a spill kit to hand.

Hull

Choose environmentally friendly cleaning products and avoid those containing chlorine and bleach.



A joint BMF and RYA Initiative

www.thegreenblue.org.uk

Supported by

