

# HANDBOOK & TIDE TABLES 2015



LARGS

WE  
LOVE  
BOATING



# euroyachts

APPOINTED BROKERS AT LARGS AND TROON YACHT HAVENS



We sell boats! Large boats, small boats, motorboats, sailingboats, new boats, old boats and all those in between.

Euroyachts is a family run business that has been at the forefront of boat sales for more than 50 years during which time we have sold several thousand new and used boats of all types to many different parts of the world.

Today, as always, boat sales is our core activity. We are the officially appointed brokers for power and sailing craft at both Largs and Troon Yacht Havens where we endeavour to offer fair and honest service to buyers and sellers alike. We have been members of the British Marine Federation for 35 years.

We are also responsible for the distribution of Jeanneau sailing and powerboats in the North of the UK. Jeanneau have been our trading partners for more than 35 years.

Our custom designed and built Showroom at Largs which was opened in 2008 remains the only one of its type in the UK and allows customers to inspect craft in comfort throughout the year.

**LARGS YACHT HAVEN 01475 687204 • TROON YACHT HAVEN 01292 318002**

**[www.euroyachts.com](http://www.euroyachts.com)**



# WELCOME TO LARGS



Yacht Havens

**WE  
LOVE  
BOATING**

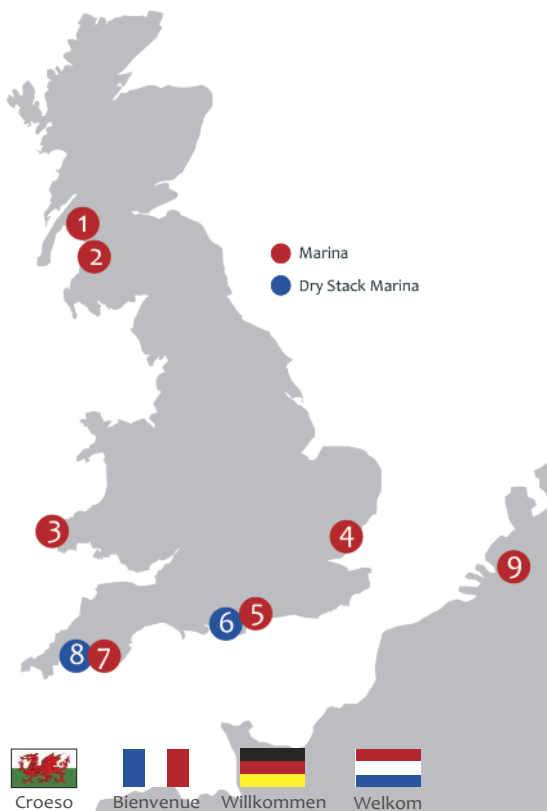
## CONTENTS

|   |    |
|---|----|
| Welcome to Largs                                | 2  |
| Admiralty Chart                                 | 5  |
| Free WiFi Access                                | 6  |
| Berth Holder Benefits                           | 7  |
| Marina Information                              | 9  |
| Events at Largs                                 | 10 |
| Largs Sailing Club & Scottish Sailing Institute | 11 |
| Activities at Largs                             | 13 |
| Other Services on Site                          | 15 |
| Cruising the Clyde                              | 16 |
| Directions to Largs Yacht Haven                 | 17 |
| Approach and Navigational Information           | 19 |
| Eating Ashore                                   | 22 |
| Marina Layout                                   | 24 |
| Site Safety & Environmental Policy              | 25 |
| Largs Town Map                                  | 26 |
| Things To Do Ashore                             | 27 |
| Surrounding Area                                | 28 |
| Berthing Charges                                | 31 |
| Tide Tables for 2015                            | 33 |
| Jachthaven Biesbosch – New Dutch Marina         | 37 |
| Useful Contact Numbers                          | 39 |
| Index of Advertisers                            | 40 |

### PART OF THE YACHT HAVENS GROUP

With a portfolio of nine marinas and dry stacks, home to over 4,000 berths, we are now one of the UK's leading marina operators. Despite our scale, we remain a family owned business and at every site we pride ourselves in having the most helpful staff, who are dedicated to providing a personal service and are always ready to assist.

- 1 Largs Yacht Haven / Tel: 01475 675333
- 2 Troon Yacht Haven / Tel: 01292 315553
- 3 Neyland Yacht Haven / Tel: 01646 601601
- 4 Fambridge Yacht Haven / Tel: 01621 740370
- 5 Lymington Yacht Haven / Tel: 01590 677071
- 6 Haven Quay, Lymington / Tel: 01590 677072
- 7 Plymouth Yacht Haven / Tel: 01752 404231
- 8 Yacht Haven Quay, Plymouth / Tel: 01752 481190
- 9 Jachthaven Biesbosch / Tel: +31(0)162 68 22 49



Croeso



Bienvenue



Willkommen



Welkom







## WELCOME TO LARGS YACHT HAVEN, SCOTLAND'S FINEST MARINA!

Largs has an enviable location in sheltered scenic waters with easy access to islands and anchorages. It is also close to excellent road, rail and air communications for links to the central belt of Scotland as well throughout the UK.

Not only do we have most helpful and experienced staff we also offer our resident berth holders a wide variety of benefits to maximise their enjoyment of sailing.

We are committed to delivering the highest level of customer service as well as continually developing facilities and services for resident and visiting yachts.

We hope you will be impressed by Largs Yacht Haven and the friendly atmosphere that has been created here. If you require any assistance at all please do not hesitate to ask.

Carolyn Elder  
**Manager**

Largs Yacht Haven Ltd  
Irvine Road, Largs  
Ayrshire KA30 8EZ

tel 01475 675333  
24 hour mobile 07920 098222  
e-mail [largs@yachthavens.com](mailto:largs@yachthavens.com)  
website [www.yachthavens.com](http://www.yachthavens.com)



[www.facebook.com/largsyachthavenscotland](http://www.facebook.com/largsyachthavenscotland)



[@yachthavenslargs](https://twitter.com/yachthavenslargs)



# David Belding

BOATYARD SERVICES

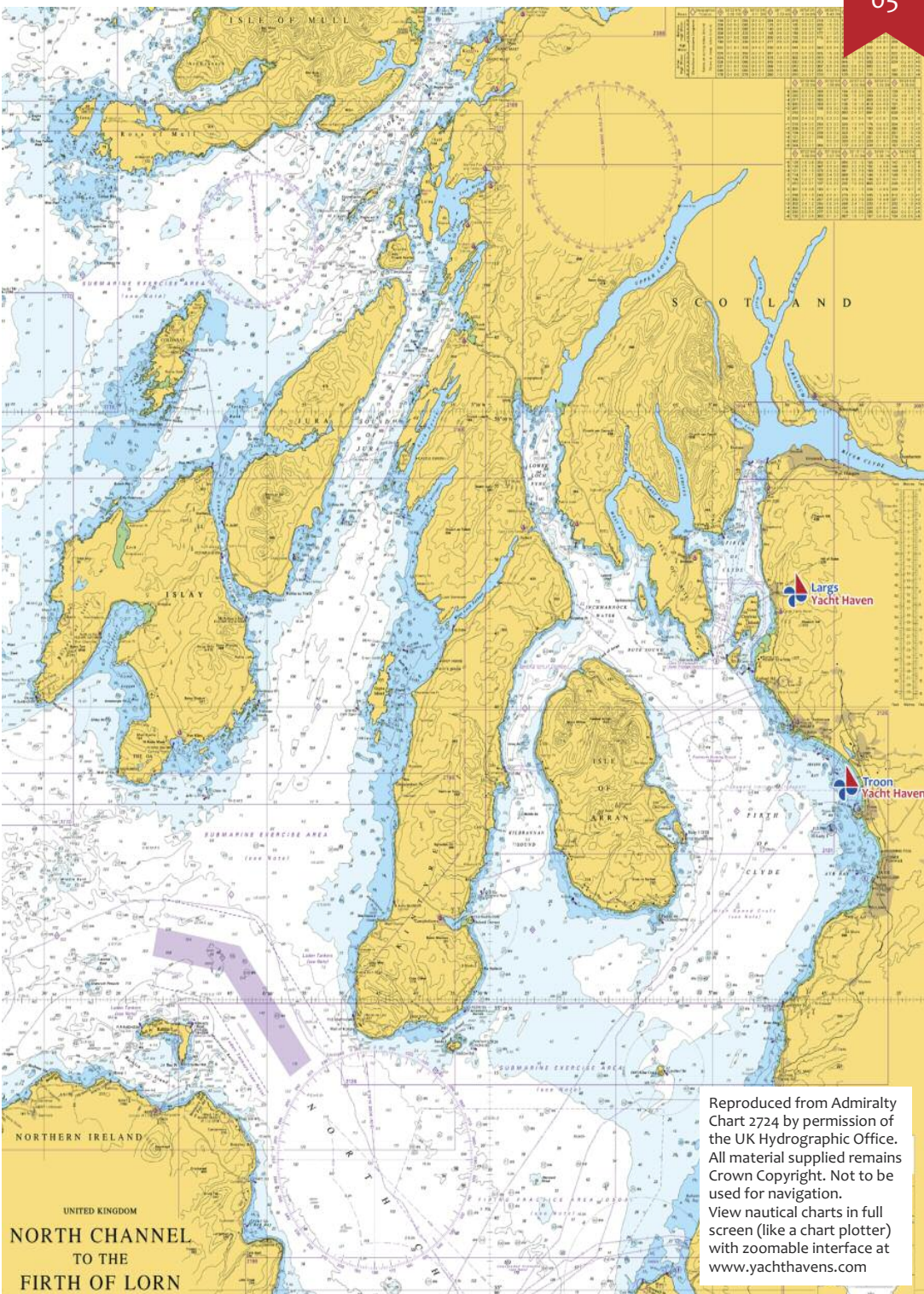
Rely on my  
experience for  
the full range of  
practical marine  
services



Contact me at  
Mobile **07889 377105**  
E-mail: **[dbyachting@aol.com](mailto:dbyachting@aol.com)**

Middleton Cottage, Perceton-by-Irvine,  
Ayrshire KA11 2AJ





Reproduced from Admiralty Chart 2724 by permission of the UK Hydrographic Office. All material supplied remains Crown Copyright. Not to be used for navigation. View nautical charts in full screen (like a chart plotter) with zoomable interface at [www.yachthavens.com](http://www.yachthavens.com)





# FREE WiFi

## How to get online

### FREE WI-FI ACCESS TO ALL BERTH HOLDERS AND VISITING YACHTSMEN

To register – visit your Marina Reception and ask for your Unique Access Code. On your device, connect to the Wi-Fi network called “Spectrum Marina WiFi” and then open your usual web browser. You will be redirected to Yacht Havens log-in page where you will be invited to enter your Access Code and register your details online.

When you’ve completed your registration, you’ll be logged in automatically and you can open your Internet Browser and enjoy free Wi-Fi. If your account has expired, please ask at your Marina Reception for a new code.

### FREEDOM TO ROAM

Yacht Havens annual berth holders can use their registered log-in details to access the free Wi-Fi network at all other Yacht Havens’ marinas around the UK. Also, in an exclusive offer for this season, Yacht Havens annual berth holders are welcome to use their log-in details to access free Wi-Fi at any other UK marina with a Wi-Fi network provided by Arqiva. Please contact Arqiva for a full list of marina locations.



### HELP DESK

Please contact Arqiva on  
0871 909 9980





# BERTH HOLDER BENEFITS

## at Largs Yacht Haven

**BERTHING AT LARGS YACHT HAVEN IS NOT JUST ABOUT HELPFUL SERVICE AND EXPERIENCED STAFF; WE ALSO OFFER THE FOLLOWING BENEFITS:**

- Sublet refunds – we will refund you 50% of fees received from visitors using your berth when you are away between April and September
  - Two marinas for the price of one – unlimited berthing at nearby Troon Yacht Haven
  - Up to 14 free visitor nights for use at any of our marinas around the UK, subject to availability. To secure your berth, please call the marina ahead of your visit.
  - Free WiFi
  - Free storage ashore
  - 5% discount on fuel sales to annual berth holders
  - “Introduce a friend” – introduce a friend to us as an annual berth holder, both parties receive £200 on account redeemable against fuel and hoist charges
- Terms and Conditions apply

Our marina reception is open 24 hours to deal with all your needs. We also sell diesel, petrol and gas throughout and our two travel hoists operate 7 days a week. Ashore we have a full range of shops, services and restaurants open all year round.

Should you require any further assistance please give us a call or come and visit Largs to see for yourself our excellent facilities and sheltered sailing location.



**MRS**  **SELDÉN**



**MAST & RIGGING  
SERVICES**  
**LARGS YACHT HAVEN**  
**Phone: 01475 670110**  
**Fax: 01475 522800**

MANUFACTURERS AND SUPPLIERS  
STANDING AND RUNNING RIGGING

- ★ MASTS ★ BOOMS ★
- ★ FURLING SYSTEMS ★
- ★ SPINNAKER POLES ★
- ★ ROD KICKERS ★ DECKGEAR ★
- ★ DESIGN, LAYOUT & FITTING ★

Also at Kip Marina 01475 522700

**SCOTTISH REGIONAL CENTRE**

[www.mastandriggering.co.uk](http://www.mastandriggering.co.uk)

**LSCG**  
LARGS YACHT HAVEN

Largs Yacht Haven  
Irvine Road, Largs,  
Ayrshire KA30 8EZ  
Office: 01475 670 000  
Lounge/Bar: 01475 670 022  
Email: [info@largss.co.uk](mailto:info@largss.co.uk)  
[www.largss.co.uk](http://www.largss.co.uk)



Berth holder membership £120  
Includes 10% discount card for many outlets  
Pop in and sample our bar and dining facilities,  
with our outstanding view. Party hosting available  
See our website for further details and membership  
[www.largss.co.uk](http://www.largss.co.uk)

**SATURN SAILS**

Inspired Design:  
Manufactured Quality

Racing and Cruising Sails  
Covers and Canopies  
Repair Service

[info@saturnsails.co.uk](http://info@saturnsails.co.uk) 01475 689933



Experience the latest Garmin range at:

**DDZ Marine**

Largs Yacht Haven  
Irvine Road  
Largs  
KA30 8EZ

  
**DDZ MARINE LTD**

**Tel: 01475 686072**

**Fax: 01475 672887**

[www.ddzmarine.com](http://www.ddzmarine.com)

**GARMIN**

Total marine navigation solutions

[www.garmin.co.uk](http://www.garmin.co.uk)

CHARTPLOTTERS • RADAR • INSTRUMENTS • VHF • AUTOPILOTS • CARTOGRAPHY • FISHFINDERS

# MARINA INFORMATION

We're open 24 hours, 7 days a week

## MARINA BERTHS

- 730 berths, fully serviced with power and water
- Visitor berths, subject to availability
- Large alongside berths suitable for motor boats
- Accessible at all states of tide

Free WiFi available throughout the marina – please collect your unique password from reception.

## MARINA RECEPTION

- Opening hours: 24 hours throughout the year, except Christmas Day
- VHF: Channel 80. Call sign Largs Yacht Haven
- Freephone for taxi service
- Weather forecasts posted in reception daily
- 24 hour flatscreen weather and news display
- Ice for sale
- Photocopying facilities
- Post boxes for incoming/outgoing mail
- DVDs available to view free of charge
- Book and magazine exchange
- Live webcam looking west over the Largs Channel. View through [www.yachthavens.com](http://www.yachthavens.com)
- Additional weather information is available through [www.scottishsailinginstitute.com](http://www.scottishsailinginstitute.com)
- Defibrillator in reception

## SECURITY 24/7

- The marina is manned 24 hours a day, 364 days a year
- The bridgeheads are controlled by access gates operated by either a daily PIN or security cards issued to permanent berth holders
- Marina car parks are also controlled by an access barrier
- CCTV cameras are sited around the marina

## DRY BERTHING

- Dry berthing is suitable for RIBS and motor boats up to 8m LOA.
- The package includes unlimited launching and recovery 7 days a week
- Boats remain weed and barnacle free, therefore on the water performance is maintained

## BOATYARD OPERATIONS

- 70 ton and 45 ton travel hoist and mobile crane, operational 7 days a week
- Space ashore for 230 boats, serviced with power and water
- Storage for cradles and trailers in the summer
- Internal slipway for casual use
- Boat shed for undercover repairs
- Dedicated trailer park for trailer storage

## TOILETS, SHOWERS AND LAUNDRY

These are located in the main building with 24 hour access. Additional toilets and showers are located in LSC clubhouse.

## FUEL

On-water, 24 hour diesel and unleaded petrol. High speed diesel pump for large deliveries.

## SEWAGE PUMP OUT

Free sewage pump out facility located on the fuel berth.

## GAS

Calor and camping gas is available from reception 24 hours.

## WASTE DISPOSAL at each bridgehead:

- Refuse skips, waste oil tanks and waste oil filters
- Free battery disposal
- Flare disposal (chargeable)
- Glass and cardboard recycling
- Trolleys (£1 coin required)

## WEATHER FORECASTS

Local weather forecasts are posted in reception daily and you can view live weather forecasts by following the links on our website – [www.yachthavens.com](http://www.yachthavens.com)

## YACHT TUITION

Largs Yacht Haven operates a marina professional scheme whereby owners can receive tuition on board their own yacht for anything from an hour to a week. If you are interested, please contact reception.

There is a Morrisons **supermarket** in Largs open 7 days. This is also the nearest **cash point**.





# EVENTS AT LARGS

2015

## MAIN EVENTS AT LARGS 2015

1 – 4 May

European Offshore Rowing Series

29 – 30 June

Rallye Ecosse par le cercle celtique

27 June – 3 July

Dragon Edinburgh Cup

22 – 30 AUGUST 2015

## LARGS PREMIER REGATTA!

- Open to all keelboats and dinghies
- Round the buoys and round the islands courses
- Scottish Two Handed Race round Arran or Holy Island
- Live bands
- Themed regatta dinner
- Special regatta berthing rates

Lots of fun for all the family!

[www.largssc.co.uk/regattaweek](http://www.largssc.co.uk/regattaweek)



## CRUISES IN COMPANY, WORKSHOPS & OTHER SOCIAL EVENTS

Largs Yacht Haven organises a number of social events throughout the year. Alongside these events, the RYA Active Marina Programme will also present you with the opportunity to get to know and socialise with the people at your marina. Enjoy cruising with other berth holders and boat owners and spend time with like-minded people at social events.

To find out what is going on at Largs Yacht Haven, speak to the marina staff.

For more information about the RYA Active Marina Programme visit [www.rya.org.uk/go/activemarina](http://www.rya.org.uk/go/activemarina)



**RYA**  
Active Marina



# LARGS SAILING CLUB

## and Scottish Sailing Institute

### LARGS SAILING CLUB

Largs Sailing Club is proud to operate from its waterfront clubhouse at the marina. It is Scotland's only RYA Centre of Excellence. Coffees, drinks and snacks are available at the bar throughout the summer.

Within the Club the Largs Cruising Group runs cruises in company around the Firth of Clyde and a summer cruise to the west coast. The Club's cadet training programme is very popular with the younger members, they meet every Thursday evening throughout the summer. Visitors from other clubs are welcome to use the facilities and enjoy the best view of the Clyde sunsets and firework displays (Sept and November) from the balcony.

### SCOTTISH SAILING INSTITUTE

The Scottish Sailing Institute Ltd works within the LSC clubhouse. Its specific function is to promote the sport of sailing, organise training and manage national and international events from Largs. The SSI works in conjunction with the national sports centres at Inverclyde and Cumbrae as well as the governing body, the Royal Yachting Association.

### FAIRLIE YACHT CLUB

Fairlie Yacht Club run a busy programme of weekend and evening races and musters from Largs.





**THE DOUGLAS HOTEL**  
A TASTE OF LUXURY  
- ON THE ISLE OF ARRAN

**THE DOUGLAS**  
Hotel • Bistro • Bar  
www.thedouglashotel.co.uk




The Douglas Hotel is the focal point for the village of Brodick and a perfect base for the discerning traveller.

Offering a personalised level of service in luxury and comfort, our knowledgeable staff will welcome you like old friends.

With a seasonal Bistro menu and Bar menu, a wide selection of whiskies and cocktails, and wines from around the world, we have something to suit all tastes.

 **WE LOOK FORWARD TO WELCOMING YOU**  
 **T:01770 302968**  
[stay@thedouglashotel.co.uk](http://stay@thedouglashotel.co.uk)



*Hastie  
of Largs*

*The Largest Department Store in the World*

Over 350 Malt Whiskies,  
Food Hall, Tilley Hats &  
Clothing, Gallery, Jewellery,  
Cards & Gifts, Hardware  
& Electrical Goods



*"The Last Magical Retailers"*  
INDEPENDENT ON SUNDAY

109 Main St., Largs. Tel: 01475 673104 Fax: 01475 675917

## MAPES BIKE HIRE



**CYCLE HIRE**  
1 HOUR - £2.80  
ALL DAY - £5.70

**3/5 Guildford Street, Millport,  
Isle of Cumbrae KA28 0AE**

Tel/Fax 01475 530444  
Email: [bikes@mapesmillport.co.uk](mailto:bikes@mapesmillport.co.uk)

*Cecchini's*  
Restaurant & Bar

*Fantastic range of Italian  
food, beers, fine Wines &  
Cocktails*

[www.cecchinis.com](http://www.cecchinis.com)

Clyde Ardrossan Marina, Dock Road, Ardrossan, KA22 8DA - Tel (01294) 471700

Also at Wellington Square, Ayr, KA7 1EH - Tel (01292) 263607

Prestwick - Tel (01292) 474146



# ACTIVITIES AT LARGS

Ellen MacArthur Cancer Trust

The new Scottish base for the Ellen MacArthur Cancer Trust opened in June 2014, and marks the expansion for the 10 year old charitable trust based in Cowes Isle of Wight, to assist young people recovering from cancer and leukaemia through sailing. Largs Yacht Haven is hugely supportive of the great work being carried out and look forward to working closely with both the young people and the Trust Team to aid their expansion.

For more information: [www.emcancertrust.org](http://www.emcancertrust.org)



## FIRTH OF CLYDE COASTAL ROWING CLUB

2 St Ayles Skitts are based in the Yacht Haven and welcome members of the local community to participate in coastal rowing in the sheltered Largs Channel. Training and social events take place in Largs Sailing Club.

For more information:  
[www.firthofclydecoastalrowingclub.com](http://www.firthofclydecoastalrowingclub.com)



THE *Ellen MacArthur* TRUST  
INSPIRING YOUNG PEOPLE'S CANCER RECOVERY THROUGH SAILING

**B**oat BUZZZZZZ in and see us

**E**lectrics &  
**E**lectronics Ltd

**Clyde and Argyll**

Tel: 01292 315355 / 01475 522268



**TEEM SURVEYS**  
Marine Surveyor

P.I. Insurance  
Full Member IIMS  
RYA Yachtmaster

**Pre Purchase, Insurance, Valuation & Damage Surveys**

Email: [info@teemsurveys.co.uk](mailto:info@teemsurveys.co.uk) Web: [www.teemsurveys.co.uk](http://www.teemsurveys.co.uk)

**Tel: 01698 826 886 Mob: 07775 601 479**

Surveyor- Tom Elder DipMarSur, DipMarEEE  
18 Manus Duddy Court, Blantyre, Glasgow G72 9DE



**CUMBRAE VOYAGES**

**WILDLIFE BOAT TRIPS**  
Regular sailings from LARGS

**Open all year**

Seals, Sharks and Dolphins  
Family Discounts - Professional Skippers  
Waterproofs Provided

**0845 257 0404**  
[www.cumbraevoyages.co.uk](http://www.cumbraevoyages.co.uk)





**www.anodesdirect.co.uk**

**Boat Equipment & Accessories**

- Anodes • Anode Eye • Marine Paints •
- Heating Systems • Vetus Range •

**Phone 07787 566816**  
email: [sales@anodesdirect.co.uk](mailto:sales@anodesdirect.co.uk)










**Eberspächer Heating**  
**YOU CHOOSE US – WE'LL HEAT YOU**

For best prices, local supply, installation and service  
call **DDZ Marine Ltd** on **01475 686072**

A WORLD OF COMFORT

**www.ddzmarine.com**

**Eberspächer**











# OTHER SERVICES

## On site at Largs Yacht Haven

### YACHT SALES

**Euroyachts:** agents for Jeanneau sail and power and the official yacht brokers on site at Largs Yacht Haven. Any yacht for sale within the marina must be registered with Euroyachts. Now operating from Scotland's first purpose built boat showroom at Largs. Tel: 01475 674764

**DDZ Marine:** Beneteau Power, Bavaria Yachts.  
Tel: 01475 686072

### YACHT SERVICES

**Diving:** C & C Marine: Dive centre and shop, compressed air and sea safaris! Tel: 01475 687180

**Chandlers:** Largs Chandlers: Clothing, books and chandlery. Tel: 01475 686026

**Marine Engineers:** North Western Automarine  
Tel: 01475 687139 / DDZ Marine Tel: 01475 686072 /  
C&C Marine Tel: 01475 687180

**Sailmakers:** Saturn Sails Tel: 01475 689933

**Riggers:** MRS Mast and Rigging Services  
Tel: 01475 670110

### SAILING SCHOOLS & YACHT CHARTER

**Catima Sailing Yacht Charter:** Tel: 07711 635 923

**Cumbrae Voyages:** Marine wildlife adventures.  
Tel: 0845 257 0404

**Flamingo Yacht Charter:** a large variety of yachts from 26-40ft. Tel: 01475 686088

**Scotsail Yacht Charters:** Charter and RYA courses.  
Tel: 01475 689677

**Scottish Sailing Institute** Tel: 01475 670011  
**Sport Scotland Cumbrae** (Cumbrae National Watersports Centre): RYA Training  
Tel: 01475 530757  
**Sailaway Yacht Charter** Tel: 0845 528 1011

### FOOD & DRINK

Enjoy refreshments in the sunshine in our landscaped courtyard.

**Largs Sailing Club / Bar & Restaurant:** Waterfront clubroom for members and associates.

Tel: 01475 670000

**Scotts Restaurant / Bar:** Open seven days a week.  
Tel: 01475 686684

**The Bosuns Table Coffee Shop and Deli** with basic provisions, papers, milk etc as well as wide selection of local food produce. Tel: 01475 689198

### OTHER SERVICES

**Haven Spa (Health & Beauty):** Treat yourself to some relaxation, therapy or a facial at The Haven Spa! Open 7 days a week to make yourself feel special and beautiful! Tel: 01475 670444

**Car Hire (Delivery to Largs Yacht Haven)**

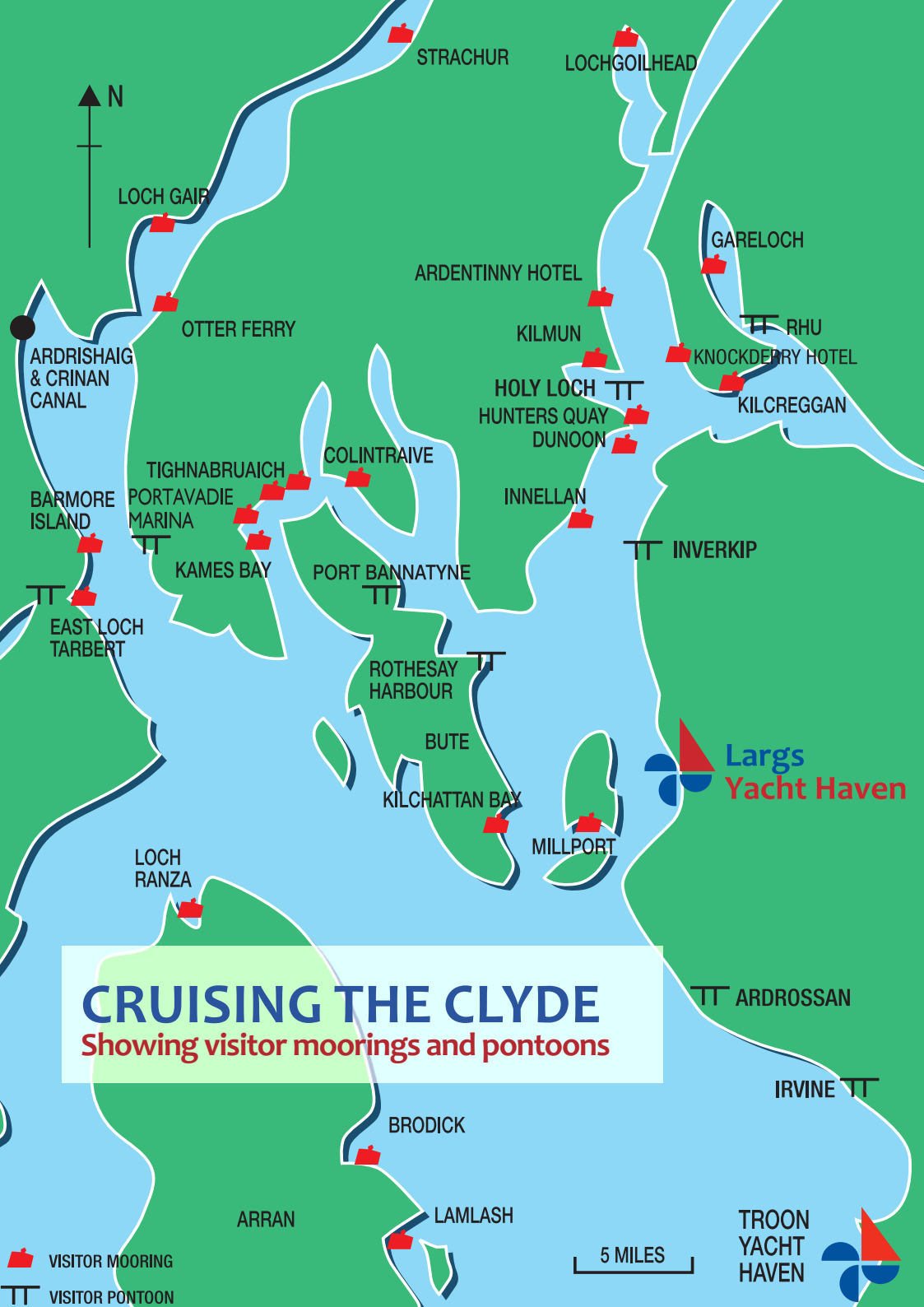
Avis Tel: 0870 6060 100 / 0141 221 2827

**Enterprise Rent A Car** Tel: 01475 721444

**Hertz** Tel: 0870 846007 (Glasgow Airport) /  
01292 511281 (Prestwick Airport)







# CRUISING THE CLYDE

Showing visitor moorings and pontoons

-  VISITOR MOORING
-  VISITOR PONTOON

5 MILES

TROON  
YACHT  
HAVEN



Largs  
Yacht Haven



STRACHUR  
LOCHGOILHEAD  
LOCH GAIB  
GARELOCH  
ARDENTINNY HOTEL  
RHU  
OTTER FERRY  
KILMUN  
KNOCKDEERY HOTEL  
KILCREGGAN  
ARDRISHALG & CRINAN CANAL  
HOLY LOCH  
HUNTERS QUAY  
DUNOON  
TIGHNABRUAICH  
COLINTRAIVE  
BARMORE ISLAND  
PORTAVADIE MARINA  
KAMES BAY  
PORT BANNATYNE  
INNELLAN  
EAST LOCH TARBERT  
ROTHESAY HARBOUR  
BUTE  
KILCHATTAN BAY  
MILLPORT  
LOCH RANZA  
IRVINE  
BRODICK  
LAMLASH  
ARRAN

# DIRECTIONS

## to Largs Yacht Haven

Largs town centre, a 20 minute coastal walk away has bars, restaurants, shopping, and the usual town services.

### TRANSPORT

For detailed planned routes please see our route planner on our website [www.yachthavens.com](http://www.yachthavens.com)

### BY ROAD

Largs is well connected by the A737 to the M8, Glasgow and M74 to England.

### BY RAIL

The hourly train service to Glasgow takes 50 minutes. Trains leave Largs 10 minutes before each hour.

### BY AIR

Glasgow Airport is 35 minutes away, as is Prestwick with its low cost flights to Europe.

### BY TAXI

The local taxi firm has a freephone in our Reception and will arrange to meet flights from the airports if required. Contact 01475 689990.

### BY SEACAT

Trains to Troon, changing at Kilwinning, link Largs to the Northern Ireland Ferry.



## DRY BERTHING FOR RIBs & MOTOR BOATS up to 8m

Keep your RIB/Motorboat ashore and launch only when required.  
Avoid slime, barnacles and deterioration.

The low cost way to go sailing!



# Masts, Spars & Rigging Specialists

[www.rigitscotland.co.uk](http://www.rigitscotland.co.uk)



[www.rigitscotland.co.uk](http://www.rigitscotland.co.uk)  
Telephone: 0141 375 7823

Alloy, Carbon Spars; Rod Wire  
& Fibre Rigging; All Hardware.

We cover all locations from our  
bases in Ardrossan and Troon.

OPEN 7 DAYS A WEEK



- ✓ INSPECTION
- ✓ SERVICE
- ✓ FITTING
- ✓ SUPPLY
- ✓ ALL MAKES



**Marlow  
HARKEN**

OFFICIAL  
SERVICE  
CENTRE

## BOAT & MARINE SURVEYS

Prepurchase  
Insurance  
Valuation  
Damage surveys, etc.

**IAN CATTERSON**  
BSc, CEng, MBA, MRINA



T 01475 530326      COMPETITIVE RATES  
M 07791 254833      E [happycatt@mac.com](mailto:happycatt@mac.com)

ICA Marine - Cumrae Cottage - 12 Narros Bay - Millport - K98 0EA



## EUROBOAT INTERNATIONAL



International Boat Transport Specialists  
Road Haulage, Shipping and Air Freight

**ALISTAIR ADAMS**

139 Carlisle Road, Blackwood, Lanark ML11 9SB  
Tel: 01555 463072 Mob: 07920 859141 / 07921 803333  
email: [euroboatscotland@mail.com](mailto:euroboatscotland@mail.com)



**5% off**  
RYA Sea  
Survival Course  
Code:  
LYHSS2015\*

## Cruise with Confidence

For Pleasure or for Practice. All levels of RYA Cruising Courses.  
Visit [www.nationalcentrecumrae.org.uk](http://www.nationalcentrecumrae.org.uk) or call 01475 530 757



**cumbrae**  
a sportscotland national centre



\*Offer available for all Largs Yacht Haven berthholders.



# NAVIGATION

## Information to help you

### CRUISING LOCATION

The Yacht Haven is based perfectly amongst lochs and islands with fishing villages and harbours as near as half an hour away. The inner Clyde offers ideal day cruising whilst the more open west coast and Ireland is only a day away. Everywhere lies the background of Scottish mountains and wildlife providing interest at every opportunity. Refer to the publication Welcome Anchorages for a comprehensive guide to visitor moorings and facilities.

### ACCESS

- All tide access is available to the marina
- We are well sheltered by the adjacent Cumbrae Islands and the islands to the west. You can sail whatever the weather as no significant swell develops in the Largs channel
- Minimum depth below Chart Datum is 2.5m with several areas having deep water berths with 3m below CD
- Navigation lights mark the port and starboard breakwaters (occluding 10 secs)
- The deep water approaches to the entrance are marked with a lit safe water mark. (L.Fl.10s)

The approach to the marina is via the Largs Channel and is free of hazards

HM Customs & Excise Tel: 0845 010 9000  
Belfast Coastguard 02891 463933

### DISTANCES FROM LARGS

|                            |         |
|----------------------------|---------|
| Millport, Isle of Cumbrae  | 4 n.m.  |
| Rothesay, Isle of Bute     | 6 n.m.  |
| Colintraive, Kyles of Bute | 14 n.m. |
| Brodick, Isle of Arran     | 16 n.m. |
| Troon Yacht Haven          | 20 n.m. |
| Tarbert, Loch Fyne         | 22 n.m. |
| Ardishaig (Crinan Canal)   | 32 n.m. |











# EATING ASHORE

## At Largs Yacht Haven

### BOSUN'S TABLE

Bosun's is a Café and Deli during the day, Bistro in the evening. It is located in the heart of the marina and has a nautical themed interior creating a natural relaxed atmosphere for a coffee, a light snack or a hearty meal. Bosun's can boast that the wholesome food and bakery has been created on site by our talented Chefs, sourcing as much as we can locally. So why not come aboard and sample our famous Bosun's breakfast or fresh fish coated in homemade bread crumbs.

Bosun's can also offer a take away of speciality coffee's, hot or cold filled rolls and sandwiches or full meals and home baking. Bosun's also holds stock for your boat – everything from rolls, bacon and wine to toothbrushes!

Bosun's would also be happy to host your own private party. So pay us a visit and see for yourself, all are welcome aboard.

### BOSUN'S CAFÉ, BISTRO AND DELI

Summer Hours:

Monday – Friday 8am – 6pm

Saturday 8am – late

Sunday 8am – 6pm

Winter Hours:

We open a little later from 9am on the dark winter mornings!

To book please call us on 01475 689198 or email us at [bosunstable-largs.co.uk](mailto:bosunstable-largs.co.uk)



## BOSUN'S TABLE

Café ☒ Deli ☒ Bistro



Largs Yacht Haven  
Irvine Road, Largs KA30 8EZ  
01475 689198  
[www.bosunstable-largs.co.uk](http://www.bosunstable-largs.co.uk)



# SCOTT'S

## SCOTT'S BAR RESTAURANT

With stylish surroundings, a perfectly crafted cocktail list and a menu featuring seasonal ingredients, Scott's is ideal for everything from a leisurely lunch to an unforgettable night out.

The laid-back bar area is open all day for casual drinks and a bite to eat, while the elegant restaurant offers fine dining with spectacular views overlooking the marina.

Most impressive of all, though, is our heated outside terrace, enabling guests to dine al fresco all year round.



## SCOTT'S AT LARGS YACHT HAVEN

Scotts Bar Restaurant  
Irvine Road  
Largs  
KA30 8EZ

Tel: 01475 686684

[www.scotts-largs.co.uk](http://www.scotts-largs.co.uk)



SCOTT'S AT TROON YACHT HAVEN  
Harbour Road, Troon KA10 6DJ  
01292 315 315  
[www.scotts-troon.co.uk](http://www.scotts-troon.co.uk)

SCOTT'S AT LARGS YACHT HAVEN  
Irvine Road, Largs KA30 8EZ  
01475 686 684  
[www.scotts-largs.co.uk](http://www.scotts-largs.co.uk)

### Legend

- ① Yacht Haven Reception  
Defibrillator and First Aid
- ② Hoist Dock
- ③ Fuel / Sewage Pump Out
- ④ Bottled Gas
- ⑤ Visitor Berth
- ⑥ Largs Sailing Club Slip
- ⑦ Public Slipway
- ⑧ Championship Slipway
- ⑨ Dry Berthing Slipway
- ⑩ Public Car Parks
- ⑪ Berthholders Car Parks



### Symbols

- ① Gate 1  
Waste & Recycling
- ② Gate 2  
Waste & Recycling
- ☐ Hoist
- ⛽ Diesel / Petrol
- Fire Extinguishers  
and Lifebelts
- Safety Ladders
- Fire Assembly Point

Safe water mark  
Lat: 55° 46.4'N  
Long: 4° 51.8'W



# YOUR SAFETY

## And the Environment

### YOUR SAFETY

We aim to provide a relaxed and safe environment for you to enjoy your boating in and ask that all marina rules and regulations are followed.

### IN CASE OF FIRE ON BOARD

- Sound the alarm at each bridgehead and notify marina staff
- Call 999
- Only tackle the fire if it is safe to do so with the extinguishers provided in the emergency cabinets.
- Retreat to a safe distance and locate the nearest fire assembly point.

### GENERAL SAFETY

- Please familiarize yourself with the location of lifesaving and firefighting equipment on the pontoons and ashore.
- Please take extra care in snow and icy conditions as the pontoons can be slippery and ensure appropriate footwear is worn at all times
- Please do not ride bicycles or scooters on the pontoons
- Please ensure all children and non-swimmers wear a life jacket at all times
- Please do not allow dogs to foul the pontoons or yard areas, if they do please clean up
- Swimming and scuba diving are not permitted in the marina
- Please keep below 2 knots when in the marina and mind your wash
- Always isolate gas and fuel when leaving your boat.
- Always use own hosepipe for drinking water and filling water tanks, and never leave hoses running or hanging in the water.
- Do not remove supports from vessels in the yard, or run engines of vessels stored ashore. All furling sails must be removed prior to boats being lifted.

For your safety and enjoyment of our marina please be sure to follow the guidelines. Comprehensive marina rules can be found on the reverse of your berthing contracts. All boats and contractors using the marina, ashore or afloat, must have a minimum of £3,000,000 third party Insurance.

### HELP US TO PROTECT THE ENVIRONMENT

Largs Yacht Haven is committed to promoting environmental awareness and best practice so we can all continue to enjoy our boating in a clean and healthy environment.

### OUR OBJECTIVES ARE:

- To comply with all current and relevant regulations
- To reduce the use of consumables and energy
- Reduce hazardous waste generation
- Minimise the impact of activities on neighbours

### WE PROVIDE TO OUR CUSTOMERS:

- Paper and cardboard recycling
- Glass recycling
- Waste oil and battery collection for recycling
- Sewage pump out facilities

### IN THE MARINA AND ON THE WATER:

- Please do not disturb wildlife with excessive wash
- Please avoid water pollution and use the facilities ashore (toilets, waste bins, sewage pump out)
- Please do not pump out bilges in the marina
- If you have or see a fuel leak please notify marina staff immediately
- Please keep your boat washed and antifouled annually to prevent marine growth



# LARGS

## LARGS TOWN AND SEAFRONT

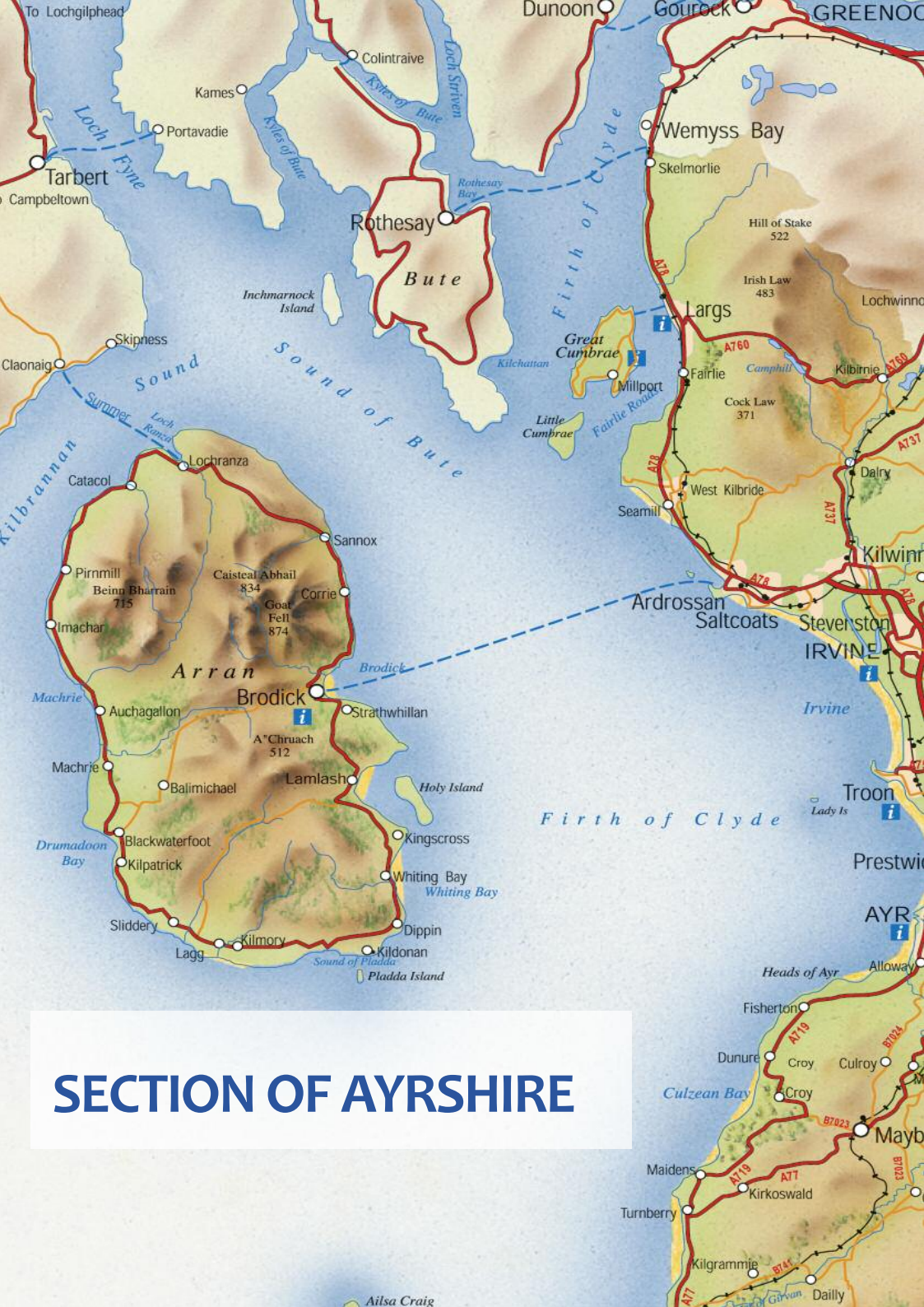
Reproduced by Nicolson Maps Licence No 398098.  
This map is based upon Ordnance Survey maps with the permission of the Controller of Her Majesty's Stationery Office  
© Crown Copyright 2004.











# SECTION OF AYRSHIRE







# NORTH WESTERN AUTOMARINE ENGINEERS

**MerCruiser**  
DIESELS & PETROLS  
INBOARDS & STERNDRIVES

The complete marine service  
ENGINES:

Sales Service and major overhauls to all types of marine engines.

Agents and Distributors for: Mercruiser, Vetus, Mermaid, Sabre, Perkins Engines, Lombardini.

**ELECTRICAL:** From a minor fault to complete rewire.

Generators, Vetus. Accessory fitting service

**FIBREGLASS AND ANTIFOULING:**

Repairing a small scratch and polishing of hulls.



**Largs Yacht Haven. Tel & Fax: 01475 687139**  
**Mobile: 07836 705928 and 07880 813769**  
Email: [nwautomarine@btconnect.com](mailto:nwautomarine@btconnect.com)

# LargsChandlers

- Open 7 days a week at Largs Yacht Haven
- Marine clothing, boat hardware, spares and advice
- 24-hour collection available
- Mail order and internet sales

t 01475 686026 e [shop@largschandlers.co.uk](mailto:shop@largschandlers.co.uk)



## THE CATCH @ FINS SEAFOOD RESTAURANT

RESTAURANT OPENING TIMES

THURSDAY - SUNDAY LUNCH 12 - 3PM

THURSDAY - SATURDAY DINNER 6 - 9PM

OPEN FOR MOST BANK HOLIDAYS

KIDS MENU

NON-SEAFOOD DISHES

GROUP BOOKINGS & SET MENU AVAILABLE

TEL 01475 568989



SMOKEHOUSE & FARMSHOP

## SMOKEHOUSE & FARMSHOP OPEN 7 DAYS

A RANGE OF FRESH FISH AND QUALITY  
SMOKED PRODUCTS

PLATTERS AVAILABLE TO ORDER

OUTSIDE CATERING & MAIL ORDER SERVICE

TEL 01475 568918

THERE IS NO MISTAKING THAT FRESH CAUGHT SEAFOOD TASTE



FENCEBAY LTD,  
FENCEFOOT FARM, FAIRLIE,  
KA29 0EG 5MINS SOUTH OF  
LARGS HARBOR ON A78  
WEB: [FENCEBAY@GOL.COM](http://FENCEBAY@GOL.COM)  
EMAIL: [FENCEBAY@GOL.COM](mailto:FENCEBAY@GOL.COM)  
FACEBOOK: FENCEBAYFINS



# CHARGES

## Berthing Charges at Largs 1.4.2015 – 31.3.2016

### MARINA CHARGES

#### ANNUAL BERTHING

Includes storage ashore

up to 6m 6.1-7m 7.1-12.1m 12.2m +

One payment

£1275 £326 £405 £412

(flat rate)

3 instalments add 2%

10 direct debits add 4%

#### LONG TERM BERTHING

7% discount on annual rate when purchasing 2 years or longer

#### DRY BERTHING

£1350 £263 (6.1m to 8m)

(flat rate)

#### DUTCH BERTHING

£342/m. Incl 12 months storage ashore  
+ 5 lifts/launches, 20 nights berthing

#### WINTER 1.10.15 – 31.3.16

up to 6m 6.1-7m 7.1-12.1m 12.2m +

Winter afloat £108 £108 £115

Winter package ashore £140 £140 £148

#### VISITOR BERTHING

Overnight £3/m

Monthly £57/m

Regatta rate

(groups) £20 per night

Hard standing £0.62/m per day

### BOATYARD CHARGES

BOATYARD 6.1-7.8m 7.9- 12.1m 12.2m +

Lift out per metre £20 £24 £30

Launch £14.50 £17 £22

Mast up/down £60 £79 £128

Crane hire £90 per hour (min charge £50)

Boat movement £26 per time

Tow from entrance £42 per time

Heavy load surcharge £260 (over 50 tons)

Emergency lift double lift rate out with working hours (8am to 4pm)

Labour £37 per hour

Refuel £33 per time plus fuel

Cradle storage £64 per annum

LYH cradle hire £11 per week (up to 11.9m)/  
£22 per week (12m plus)

SLIPWAY up to 6m 6.1-8m

Self use £11 £11

Lift out by LYH £33 £40

Launch £25 £33

Annual self use £155 £155

All berthing to be paid in advance. All other accounts to be settled net 7 days. All work carried out under BMF Scotland/TYHA regulations. All lifting, boat movement, boat and vehicle storage entirely at owner's risk.

The Company reserves the right to meter all electricity usage. All electricity consumption is chargeable.

Registered in England No 1685301 VAT No 704 2931 57 E&OE

Prices are per metre including VAT @ 20%.

Minimum chargeable length 6.1m

Annual contracts commence the first day of any month



# Sails

by Leitch  
of Tarbert

ARGYLL SCOTLAND

Tel: 0845 5214128

E-mail: leitchsails@aol.com

*Sailmakers, Riggers, Chandlery*



# OWEN SAILS

Head Office:  
Tralee Bay, Benderloch,  
By Oban, Argyll, PA37 1QR  
Tel: 01631 720485  
Fax: 01631 720545

Photo by Marc Turner  
email: [info@owensails.com](mailto:info@owensails.com) • web: [www.owensails.com](http://www.owensails.com)



**SJ Marine Services**

Wash : Polish  
Anti-foul  
Interior Valet  
Sail Wash  
Osmosis Treatment  
Coppercoat  
Other Services Available

0781  
549 6781

[ajsj7@hotmail.com](mailto:ajsj7@hotmail.com)



John Shepherd Boat Transport  
UK & Europe

Tel: 01563 538216 Mob: 07836 706119  
E: [john@jsboattransport.co.uk](mailto:john@jsboattransport.co.uk)

## équipagemarine

mobile marine valeting

**OUTSIDE**

Polishing & Cleaning  
all Surfaces,  
Deep Clean & Regular Washes  
Gelcoat, Glass, Stainless Steel, Al...  
Teak Deck Care  
Sail & Canvas Cleaning

**INSIDE**

Regular Domestic &  
One off Seasonal Cleaning  
Carpet, Upholstery, Galley  
Headlining, Bilges, Engine Room  
Heads Sanitary Coating

M: 0797 3374311  
[mail@equipagemarine.co.uk](mailto:mail@equipagemarine.co.uk)



## The Old Rectory

The Old Rectory is ideally situated right on the seafront of Largs just a short walk along the promenade to the town centre. The house has excellent sea views from its spacious ensuite bedrooms. Safe off street parking, Residents Lounge and Free WI FL.

Not even 5 minutes from the Marina.

+44 (0) 1475 674405  
[ashrona@aol.com](mailto:ashrona@aol.com)  
[www.oldrectorylargs.co.uk](http://www.oldrectorylargs.co.uk)  
2 Aubrey Crescent, Largs, Ayrshire KA30 8PR

## quay marine

Mechanical & Electrical Installations,  
Repair & Engine Servicing

Mobile: 07787 803409  
Tel: 01475 568624

Email: [quaymarine@btinternet.com](mailto:quaymarine@btinternet.com)  
[www.quay-marine.com](http://www.quay-marine.com)

Workshop, Fairlie Quay Marina, Main Road, Fairlie, KA29 0AS

# LARGS TIDE TABLES 2015

LAT 55°57' N LONG 4°46' W

TIME ZONE UT(GMT)\*

TIMES AND HEIGHTS OF HIGH AND LOW WATERS

| JANUARY                                   |                          |   |                          | FEBRUARY                                   |                          |   |                           | MARCH                                      |                          |  |                            |
|---|--------------------------|---|--------------------------|--|--------------------------|---|---------------------------|--|--------------------------|--|----------------------------|
| Time                                      | m                        | Time                                      | m                        | Time                                       | m                        | Time                                      | m                         | Time                                       | m                        | Time                                       | m                          |
| <b>1</b> 0222<br>0906<br>TH 1457<br>2143  | 0.6<br>3.1<br>0.9<br>3.2 | <b>16</b> 0126<br>0836<br>F 1414<br>2034  | 1.0<br>2.9<br>1.1<br>3.0 | <b>1</b> 0357<br>1046<br>SU 1624<br>2327   | 0.6<br>3.2<br>0.6<br>3.2 | <b>16</b> 0302<br>1016<br>M 1545<br>2231  | 0.8<br>3.1<br>0.5<br>3.1  | <b>1</b> 0241<br>0920<br>SU 1512<br>2221   | 0.8<br>3.0<br>0.7<br>2.9 | <b>16</b> 0118<br>0824<br>M 1415<br>2056   | 1.0<br>2.8<br>0.6<br>2.9   |
| <b>2</b> 0321<br>1010<br>F 1549<br>2244   | 0.6<br>3.3<br>0.7<br>3.3 | <b>17</b> 0232<br>0948<br>SA 1517<br>2145 | 0.9<br>3.1<br>0.9<br>3.1 | <b>2</b> 0444<br>1132<br>M 1707            | 0.5<br>3.4<br>0.5        | <b>17</b> 0401<br>1108<br>TU 1635<br>2328 | 0.6<br>3.3<br>0.2<br>3.3  | <b>2</b> 0337<br>1024<br>M 1603<br>2310    | 0.7<br>3.1<br>0.5<br>3.0 | <b>17</b> 0238<br>0949<br>TU 1521<br>2216  | 0.8<br>3.0<br>0.3<br>3.0   |
| <b>3</b> 0412<br>1102<br>SA 1638<br>2336  | 0.5<br>3.4<br>0.6<br>3.4 | <b>18</b> 0330<br>1043<br>SU 1608<br>2247 | 0.8<br>3.3<br>0.6<br>3.3 | <b>3</b> 0012<br>0525<br>TU 1213<br>O 1744 | 3.2<br>0.5<br>3.5<br>0.4 | <b>18</b> 0450<br>1155<br>W 1721          | 0.3<br>3.5<br>0.0         | <b>3</b> 0424<br>1111<br>TU 1646<br>2352   | 0.5<br>3.3<br>0.4<br>3.2 | <b>18</b> 0341<br>1045<br>W 1614<br>2312   | 0.5<br>3.3<br>0.4<br>3.2   |
| <b>4</b> 0458<br>1146<br>SU 1720          | 0.5<br>3.5<br>0.5        | <b>19</b> 0420<br>1129<br>M 1654<br>2341  | 0.6<br>3.4<br>0.4<br>3.4 | <b>4</b> 0052<br>0603<br>W 1249<br>1816    | 3.3<br>0.4<br>3.6<br>0.4 | <b>19</b> 0018<br>0536<br>TH 1241<br>1804 | 3.4<br>0.2<br>3.7<br>-0.2 | <b>4</b> 0506<br>1152<br>W 1722            | 0.4<br>3.4<br>0.4        | <b>19</b> 0432<br>1134<br>TH 1700          | 0.3<br>3.5<br>-0.2         |
| <b>5</b> 0023<br>0540<br>M 1257<br>O 1758 | 3.4<br>0.5<br>3.6<br>0.5 | <b>20</b> 0507<br>1212<br>TU 1739         | 0.4<br>3.6<br>0.2        | <b>5</b> 0126<br>0636<br>TH 1321<br>1846   | 3.3<br>0.5<br>3.6<br>0.4 | <b>20</b> 0106<br>0621<br>F 1326<br>1849  | 3.5<br>0.1<br>3.8<br>-0.2 | <b>5</b> 0029<br>0542<br>TH 1254<br>O 1754 | 3.2<br>0.4<br>0.3<br>0.4 | <b>20</b> 0001<br>0517<br>F 1222<br>● 1743 | 3.4<br>0.1<br>-0.3<br>-0.3 |
| <b>6</b> 0105<br>0618<br>TU 1303<br>1833  | 3.4<br>0.5<br>3.7<br>0.5 | <b>21</b> 0031<br>0552<br>W 1256<br>1822  | 3.4<br>0.3<br>3.7<br>0.0 | <b>6</b> 0158<br>0707<br>F 1352<br>1916    | 3.3<br>0.5<br>3.6<br>0.4 | <b>21</b> 0151<br>0706<br>SA 1410<br>1934 | 3.5<br>3.0<br>0.8<br>-0.2 | <b>6</b> 0103<br>0613<br>F 1300<br>1822    | 3.2<br>0.4<br>3.5<br>0.4 | <b>21</b> 0047<br>0602<br>SA 1308<br>1827  | 3.5<br>3.7<br>0.0<br>-0.3  |
| <b>7</b> 0142<br>0654<br>W 1337<br>1906   | 3.3<br>0.5<br>3.7<br>0.5 | <b>22</b> 0120<br>0638<br>TH 1339<br>1908 | 3.5<br>0.2<br>3.8<br>0.0 | <b>7</b> 0229<br>0738<br>SA 1424<br>1948   | 3.3<br>0.5<br>3.6<br>0.5 | <b>22</b> 0234<br>0751<br>SU 1454<br>2020 | 3.5<br>0.0<br>3.8<br>-0.1 | <b>7</b> 0134<br>0642<br>SA 1329<br>1849   | 3.3<br>0.4<br>3.5<br>0.5 | <b>22</b> 0130<br>0645<br>SU 1353<br>1911  | 3.5<br>-0.1<br>3.8<br>-0.2 |
| <b>8</b> 0216<br>0729<br>TH 1411<br>1940  | 3.3<br>0.6<br>3.7<br>0.5 | <b>23</b> 0207<br>0724<br>F 1423<br>1955  | 3.5<br>0.2<br>3.9<br>0.0 | <b>8</b> 0301<br>0811<br>SU 1457<br>2022   | 3.3<br>0.5<br>3.6<br>0.5 | <b>23</b> 0315<br>0838<br>M 1537<br>2109  | 3.5<br>0.1<br>3.8<br>0.1  | <b>8</b> 0203<br>0710<br>SU 1359<br>1918   | 3.3<br>0.4<br>3.5<br>0.4 | <b>23</b> 0211<br>0729<br>M 1437<br>1956   | 3.5<br>-0.1<br>3.7<br>-0.1 |
| <b>9</b> 0251<br>0805<br>F 1446<br>2017   | 3.3<br>0.6<br>3.7<br>0.6 | <b>24</b> 0252<br>0812<br>SA 1508<br>2044 | 3.5<br>0.2<br>3.9<br>0.0 | <b>9</b> 0334<br>0848<br>M 1533<br>2059    | 3.3<br>0.5<br>3.6<br>0.5 | <b>24</b> 0355<br>0926<br>TU 1620<br>2202 | 3.5<br>0.2<br>3.6<br>0.3  | <b>9</b> 0232<br>0741<br>M 1432<br>1950    | 3.3<br>0.4<br>3.5<br>0.5 | <b>24</b> 0250<br>0813<br>TU 1519<br>2043  | 3.6<br>0.0<br>3.6<br>0.1   |
| <b>10</b> 0327<br>0842<br>SA 1522<br>2056 | 3.3<br>0.7<br>3.7<br>0.6 | <b>25</b> 0336<br>0901<br>SU 1553<br>2135 | 3.5<br>0.3<br>3.8<br>0.2 | <b>10</b> 0408<br>0928<br>TU 1611<br>2141  | 3.2<br>0.6<br>3.5<br>0.6 | <b>25</b> 0435<br>1018<br>W 1705<br>2302  | 3.4<br>0.4<br>3.3<br>0.5  | <b>10</b> 0302<br>0816<br>TU 1507<br>2028  | 3.3<br>0.4<br>3.5<br>0.4 | <b>25</b> 0328<br>0859<br>W 1600<br>2133   | 3.5<br>0.1<br>3.5<br>0.3   |
| <b>11</b> 0405<br>0923<br>SU 1600<br>2137 | 3.2<br>0.8<br>3.6<br>0.7 | <b>26</b> 0419<br>0952<br>M 1639<br>2232  | 3.4<br>0.4<br>3.6<br>0.3 | <b>11</b> 0445<br>1014<br>W 1652<br>2230   | 3.1<br>0.8<br>3.3<br>0.7 | <b>26</b> 0518<br>1121<br>TH 1755         | 3.2<br>0.7<br>3.0         | <b>11</b> 0334<br>0857<br>W 1545<br>2110   | 3.3<br>0.4<br>3.4<br>0.5 | <b>26</b> 0407<br>0949<br>TH 1643<br>2230  | 3.4<br>0.3<br>3.2<br>0.6   |
| <b>12</b> 0445<br>1006<br>M 1640<br>2223  | 3.1<br>0.9<br>3.4<br>0.8 | <b>27</b> 0504<br>1048<br>TU 1729<br>2336 | 3.3<br>0.6<br>3.4<br>0.5 | <b>12</b> 0526<br>1108<br>TH 1740<br>2326  | 3.0<br>0.9<br>3.1<br>0.9 | <b>27</b> 0017<br>0607<br>F 1247<br>1905  | 0.8<br>3.0<br>0.8<br>2.8  | <b>12</b> 0408<br>0943<br>TH 1624<br>2159  | 3.2<br>0.5<br>3.6<br>0.3 | <b>27</b> 0449<br>1049<br>F 1731<br>2341   | 3.2<br>0.6<br>2.9<br>0.8   |
| <b>13</b> 0528<br>1056<br>TU 1726<br>2316 | 3.0<br>1.0<br>3.3<br>0.9 | <b>28</b> 0552<br>1154<br>W 1827          | 3.2<br>0.8<br>3.2        | <b>13</b> 0618<br>1211<br>F 1838           | 2.8<br>1.0<br>3.0        | <b>28</b> 0135<br>0719<br>SA 1409<br>2114 | 0.9<br>2.8<br>2.8<br>2.7  | <b>13</b> 0445<br>1036<br>F 1709<br>2255   | 3.1<br>0.7<br>3.1<br>0.8 | <b>28</b> 0536<br>1212<br>SA 1834          | 3.0<br>0.8<br>2.7          |
| <b>14</b> 0618<br>1154<br>W 1819          | 2.9<br>1.2<br>3.1        | <b>29</b> 0048<br>0652<br>TH 1315<br>1950 | 0.7<br>3.0<br>0.9<br>3.0 | <b>14</b> 0033<br>0732<br>SA 1327<br>1952  | 1.0<br>2.8<br>1.0<br>2.9 | <b>14</b> 0531<br>1139<br>SA 1804         | 2.9<br>0.8<br>2.9         | <b>14</b> 0531<br>1139<br>SA 1804          | 2.9<br>0.8<br>2.9        | <b>29</b> 0101<br>0637<br>SU 1338<br>2043  | 1.0<br>2.8<br>0.8<br>2.6   |
| <b>15</b> 0017<br>0720<br>TH 1303<br>1922 | 1.0<br>2.9<br>1.2<br>3.0 | <b>30</b> 0200<br>0822<br>F 1431<br>2128  | 0.9<br>2.8<br>0.9<br>3.0 | <b>15</b> 0150<br>0906<br>SU 1443<br>2118  | 1.0<br>2.9<br>0.8<br>2.9 | <b>15</b> 0000<br>0637<br>SU 1254<br>1918 | 0.9<br>2.8<br>0.8<br>2.8  | <b>15</b> 0000<br>0637<br>SU 1254<br>1918  | 0.9<br>2.8<br>0.8<br>2.8 | <b>30</b> 0211<br>0830<br>M 1442<br>2154   | 0.9<br>2.8<br>0.7<br>2.8   |
|   |                          | <b>31</b> 0303<br>0948<br>SA 1533<br>2235 | 0.7<br>3.0<br>0.7<br>3.1 |  |                          |   |                           | <b>31</b> 0309<br>0950<br>TU 1533<br>2242  | 0.8<br>2.9<br>0.5<br>3.0 |  |                            |

Deduct 20 minutes from the HW Greenock for HW Largs. British Summer Time: 29 March to 24 October 2015 inclusive.  
 \*Add 1 hour BST in shaded areas. ©Crown Copyright and/or database rights. Reproduced by permission of the Controller of Her Majesty's Stationery Office and the UK Hydrographic Office (www.ukho.gov.uk). No liability can be accepted by the Hydrographic Office or Largs Yacht Haven for the consequences of any inaccuracy in prediction.



# LARGS TIDE TABLES 2015

LAT 55°57'N LONG 4°46'W

TIME ZONE UT(GMT)\*

TIMES AND HEIGHTS OF HIGH AND LOW WATERS

| APRIL                              |                          |                                   |                            | MAY                               |                          |   |                          | JUNE  |                          |   |                          |
|------------------------------------|--------------------------|-----------------------------------|----------------------------|-----------------------------------|--------------------------|---|--------------------------|---|--------------------------|---|--------------------------|
| Time                               | m                        | Time                              | m                          | Time                              | m                        | Time                                      | m                        | Time  | m                        | Time                                      | m                        |
| <b>1</b> 0358<br>W 1816<br>2323    | 0.6<br>0.4<br>3.1        | <b>16</b> 0319<br>TH 1550<br>2250 | 0.5<br>0.0<br>3.2          | <b>1</b> 0407<br>F 1817<br>2323   | 0.5<br>0.4<br>3.2        | <b>16</b> 0352<br>SA 1618<br>2315         | 0.4<br>0.0<br>3.3        | <b>1</b> 0448<br>M 1652                     | 0.5<br>0.4               | <b>16</b> 0512<br>TU 1732                 | 0.2<br>3.3<br>0.2        |
| <b>2</b> 0439<br>TH 1653<br>2359   | 0.4<br>3.3<br>0.3<br>3.2 | <b>17</b> 0412<br>F 1638<br>2339  | 0.3<br>3.5<br>-0.2<br>3.4  | <b>2</b> 0444<br>SA 1652          | 0.4<br>3.2<br>0.4        | <b>17</b> 0441<br>SU 1702                 | 0.2<br>3.5<br>-0.1       | <b>2</b> 0004<br>TU 1158<br>O 1727          | 3.3<br>0.4<br>3.2<br>3.2 | <b>17</b> 0024<br>W 1301<br>1815          | 3.4<br>0.2<br>3.3<br>3.0 |
| <b>3</b> 0516<br>F 1725            | 0.4<br>3.3<br>0.3        | <b>18</b> 0459<br>SA 1722         | 0.1<br>3.6<br>-0.2         | <b>3</b> 0000<br>SU 1157<br>1723  | 3.2<br>0.4<br>0.4        | <b>18</b> 0000<br>M 1228<br>1747          | 3.4<br>0.1<br>3.5<br>0.0 | <b>3</b> 0038<br>W 1239<br>1804             | 3.4<br>0.3<br>0.4        | <b>18</b> 0105<br>TH 1346<br>1857         | 3.5<br>0.1<br>3.2<br>0.3 |
| <b>4</b> 0033<br>SA 1232<br>O 1753 | 3.2<br>0.3<br>3.3<br>0.4 | <b>19</b> 0024<br>SU 1248<br>1806 | 3.4<br>0.0<br>3.6<br>-0.2  | <b>4</b> 0035<br>O 1752           | 3.3<br>0.4<br>3.3<br>0.4 | <b>19</b> 0044<br>TU 1315<br>1830         | 3.5<br>0.0<br>3.5<br>1.1 | <b>4</b> 0112<br>TH 1322<br>1846            | 3.5<br>0.2<br>3.3        | <b>19</b> 0143<br>F 1426<br>1939          | 3.5<br>0.2<br>3.2<br>0.4 |
| <b>5</b> 0106<br>SU 1302<br>1820   | 3.3<br>0.4<br>3.4<br>0.4 | <b>20</b> 0107<br>M 1334<br>1849  | 3.5<br>-0.1<br>3.6<br>-0.1 | <b>5</b> 0106<br>TU 1305<br>1825  | 3.4<br>3.3<br>0.4        | <b>20</b> 0124<br>W 1400<br>1914          | 3.5<br>0.0<br>3.4<br>0.2 | <b>5</b> 0147<br>F 1406<br>1932             | 3.5<br>0.2<br>3.4<br>0.3 | <b>20</b> 0219<br>SA 1751<br>2020         | 3.6<br>0.2<br>3.5<br>0.5 |
| <b>6</b> 0135<br>M 1333<br>1849    | 3.3<br>0.3<br>3.4<br>0.3 | <b>21</b> 0147<br>TU 1418<br>1934 | 3.6<br>-0.1<br>3.6<br>0.0  | <b>6</b> 0136<br>W 1343<br>1903   | 3.4<br>0.3<br>0.3        | <b>21</b> 0202<br>TH 1443<br>1958         | 3.6<br>0.1<br>3.3<br>0.3 | <b>6</b> 0225<br>SA 1451<br>2021            | 3.6<br>0.4<br>0.4        | <b>21</b> 0256<br>SU 1544<br>2103         | 3.5<br>0.3<br>3.1<br>0.5 |
| <b>7</b> 0203<br>TU 1407<br>1924   | 3.4<br>0.3<br>3.4<br>0.3 | <b>22</b> 0225<br>W 1500<br>2019  | 3.6<br>0.0<br>3.5<br>0.2   | <b>7</b> 0207<br>TH 1423<br>1946  | 3.5<br>0.2<br>3.4<br>0.3 | <b>22</b> 0240<br>F 1524<br>2044          | 3.6<br>0.2<br>3.2<br>0.4 | <b>7</b> 0305<br>SU 1537<br>2113            | 3.6<br>0.2<br>3.3<br>0.3 | <b>22</b> 0334<br>M 1626<br>2148          | 3.5<br>0.4<br>3.0<br>0.6 |
| <b>8</b> 0233<br>W 1444<br>2004    | 3.4<br>0.3<br>3.4<br>0.3 | <b>23</b> 0303<br>TH 1542<br>2107 | 3.5<br>0.1<br>3.3<br>0.4   | <b>8</b> 0242<br>F 1505<br>2033   | 3.5<br>0.2<br>3.4<br>0.4 | <b>23</b> 0318<br>SA 1606<br>2132         | 3.5<br>0.3<br>3.1<br>0.6 | <b>8</b> 0348<br>M 1626<br>2208             | 3.5<br>0.2<br>3.2<br>0.5 | <b>23</b> 0414<br>TU 1710<br>2237         | 3.3<br>0.5<br>2.9<br>0.8 |
| <b>9</b> 0305<br>TH 1522<br>2048   | 3.4<br>0.3<br>3.4<br>0.4 | <b>24</b> 0342<br>F 1626<br>2200  | 3.4<br>0.3<br>3.1<br>0.6   | <b>9</b> 0319<br>SA 1548<br>2125  | 3.4<br>0.3<br>3.3<br>0.5 | <b>24</b> 0359<br>SU 1652<br>2225         | 3.4<br>0.5<br>2.9<br>0.7 | <b>9</b> 0437<br>TU 1719<br>2307            | 3.4<br>0.3<br>3.1<br>0.6 | <b>24</b> 0456<br>W 1758<br>2331          | 3.2<br>0.7<br>2.9<br>0.9 |
| <b>10</b> 0339<br>F 1603<br>2138   | 3.3<br>0.4<br>3.3<br>0.5 | <b>25</b> 0423<br>SA 1712<br>2302 | 3.3<br>0.5<br>2.9<br>0.8   | <b>10</b> 0359<br>SU 1636<br>2222 | 3.3<br>0.4<br>3.2<br>0.6 | <b>25</b> 0442<br>M 1743<br>2323          | 3.2<br>0.6<br>2.8<br>0.9 | <b>10</b> 0536<br>W 1821                    | 3.2<br>0.3<br>3.0        | <b>25</b> 0545<br>TH 1852                 | 3.0<br>0.7<br>3.0<br>2.8 |
| <b>11</b> 0417<br>SA 1648<br>2235  | 3.2<br>0.5<br>3.1<br>0.7 | <b>26</b> 0509<br>SU 1810         | 3.1<br>0.7<br>2.7          | <b>11</b> 0446<br>M 1730<br>2324  | 3.2<br>0.4<br>3.0<br>0.8 | <b>26</b> 0531<br>TU 1842                 | 3.0<br>0.7<br>2.7        | <b>11</b> 0011<br>TH 1301<br>1935           | 0.7<br>3.1<br>3.0        | <b>26</b> 0032<br>F 1303<br>1953          | 1.0<br>2.9<br>2.8        |
| <b>12</b> 0502<br>SU 1743<br>2340  | 3.0<br>0.6<br>2.9<br>0.9 | <b>27</b> 0015<br>M 1252<br>1932  | 1.0<br>2.9<br>0.8<br>2.6   | <b>12</b> 0549<br>TU 1840         | 3.0<br>0.4<br>2.9        | <b>27</b> 0028<br>W 1302<br>1950          | 3.0<br>0.7<br>2.7        | <b>12</b> 0122<br>TH 0817<br>F 1405<br>2052 | 0.7<br>3.1<br>0.3<br>3.0 | <b>27</b> 0137<br>SA 1402<br>2059         | 1.0<br>2.9<br>0.7<br>2.9 |
| <b>13</b> 0605<br>M 1855           | 2.9<br>0.6<br>2.8        | <b>28</b> 0128<br>TU 1400<br>2104 | 1.0<br>2.8<br>0.7<br>2.7   | <b>13</b> 0034<br>W 1326<br>2007  | 0.8<br>3.0<br>2.9        | <b>28</b> 0136<br>TH 0741<br>1402<br>2058 | 1.0<br>2.9<br>0.7<br>2.8 | <b>13</b> 0231<br>SA 0925<br>1504<br>2157   | 0.6<br>3.2<br>0.2<br>3.1 | <b>28</b> 0240<br>SU 0853<br>1455<br>2206 | 0.9<br>2.9<br>3.0<br>3.0 |
| <b>14</b> 0055<br>TU 1350<br>2034  | 0.9<br>2.8<br>0.5<br>2.9 | <b>29</b> 0231<br>W 1453<br>2159  | 0.9<br>2.9<br>0.6<br>2.9   | <b>14</b> 0148<br>TH 1430<br>2125 | 0.8<br>3.1<br>0.2<br>3.0 | <b>29</b> 0237<br>F 1453<br>2155          | 0.9<br>2.9<br>3.0        | <b>14</b> 0332<br>SU 1029<br>1557<br>2252   | 0.5<br>3.3<br>0.2<br>3.3 | <b>29</b> 0334<br>M 1542<br>2251          | 0.7<br>3.0<br>3.6<br>3.1 |
| <b>15</b> 0214<br>W 1456<br>2154   | 0.8<br>3.0<br>0.2<br>3.0 | <b>30</b> 0323<br>TH 1538<br>2244 | 0.7<br>3.0<br>0.5<br>3.0   | <b>15</b> 0255<br>F 1526<br>2224  | 0.6<br>3.2<br>0.1<br>3.2 | <b>30</b> 0327<br>SA 1538<br>2243         | 0.7<br>3.0<br>0.5<br>3.1 | <b>15</b> 0425<br>M 1646<br>2340            | 0.3<br>3.3<br>0.2<br>3.4 | <b>30</b> 0419<br>TU 1624<br>2334         | 0.5<br>3.1<br>0.5<br>3.3 |
|                                    |                          |                                   |                            |                                   |                          | <b>31</b> 0410<br>SU 1038<br>1617<br>2326 | 0.6<br>3.1<br>0.5<br>3.2 |   |                          |   |                          |

Deduct 20 minutes from HW Greenock for HW Largs. British Summer Time: 24 March to 25 October 2015 inclusive.

\*Add 1 hour BST in shaded areas. ©Crown Copyright and/or database rights. Reproduced by permission of the Controller of Her Majesty's Stationery Office and the UK Hydrographic Office ([www.ukho.gov.uk](http://www.ukho.gov.uk)). No liability can be accepted by the Hydrographic Office or Largs Yacht Haven for the consequences of any inaccuracy in prediction.

# LARGS TIDE TABLES 2015

LAT 55°57'N LONG 4°46'W

TIME ZONE UT(GMT)\*

TIMES AND HEIGHTS OF HIGH AND LOW WATERS

| JULY                                       |                          |  |                          | AUGUST                                    |                           |   |                           | SEPTEMBER                                   |                           |  |                           |
|--|--------------------------|--|--------------------------|---|---------------------------|---|---------------------------|---|---------------------------|--|---------------------------|
| Time                                       | m                        | Time                                       | m                        | Time                                      | m                         | Time  | m                         | Time  | m                         | Time                                       | m                         |
| <b>1</b> 0600<br>1132<br>W 1705            | 0.4<br>3.2<br>0.4        | <b>16</b> 0010<br>0543<br>● 1250<br>● 1801 | 3.4<br>0.2<br>3.2<br>0.3 | <b>1</b> 0533<br>0803<br>SA 1251<br>1814  | 3.5<br>0.0<br>3.3<br>0.2  | <b>16</b> 0107<br>0634<br>SU 1345<br>1853   | 3.5<br>0.3<br>3.2<br>0.4  | <b>1</b> 0143<br>0709<br>TU 1405<br>1926    | 3.8<br>-0.2<br>3.5<br>0.1 | <b>16</b> 0142<br>0735<br>W 1415<br>1926   | 3.6<br>0.4<br>3.3<br>0.5  |
| <b>2</b> 0013<br>0539<br>TH 1219<br>O 1747 | 3.4<br>0.2<br>3.3<br>0.4 | <b>17</b> 0050<br>0520<br>F 1332<br>1840   | 3.5<br>0.2<br>3.2<br>0.4 | <b>2</b> 0116<br>0645<br>SU 1338<br>1900  | 3.6<br>-0.1<br>3.3<br>0.2 | <b>17</b> 0138<br>0704<br>M 1415<br>1925    | 3.5<br>0.3<br>3.2<br>0.5  | <b>2</b> 0227<br>0754<br>W 1448<br>2012     | 3.8<br>-0.1<br>3.5<br>0.1 | <b>17</b> 0214<br>0735<br>TH 1446<br>2000  | 3.6<br>0.4<br>3.4<br>0.5  |
| <b>3</b> 0051<br>0620<br>F 1305<br>1831    | 3.5<br>0.1<br>3.3<br>0.3 | <b>18</b> 0126<br>0655<br>SA 1409<br>1917  | 3.5<br>0.2<br>3.1<br>0.4 | <b>3</b> 0158<br>0730<br>M 1425<br>1948   | 3.7<br>-0.1<br>3.4<br>0.2 | <b>18</b> 0209<br>0735<br>TU 1447<br>1958   | 3.6<br>0.4<br>3.2<br>0.5  | <b>3</b> 0310<br>0842<br>TH 1529<br>2101    | 3.8<br>0.0<br>3.5<br>0.2  | <b>18</b> 0249<br>0810<br>F 1519<br>2039   | 3.6<br>0.5<br>0.4<br>0.6  |
| <b>4</b> 0131<br>0703<br>SA 1352<br>1918   | 3.6<br>0.0<br>3.3<br>0.3 | <b>19</b> 0200<br>0729<br>SU 1443<br>1954  | 3.5<br>0.3<br>3.1<br>0.4 | <b>4</b> 0242<br>0817<br>TU 1510<br>2036  | 3.8<br>-0.1<br>3.4<br>0.2 | <b>19</b> 0241<br>0808<br>W 1520<br>2035    | 3.6<br>0.4<br>3.2<br>0.5  | <b>4</b> 0353<br>0934<br>F 1611<br>2153     | 3.6<br>0.2<br>3.4<br>0.4  | <b>19</b> 0325<br>0849<br>SA 1554<br>2123  | 3.5<br>0.6<br>3.3<br>0.7  |
| <b>5</b> 0212<br>0748<br>SU 1439<br>2007   | 3.7<br>0.0<br>3.3<br>0.3 | <b>20</b> 0234<br>0805<br>M 1518<br>2032   | 3.5<br>0.3<br>3.1<br>0.5 | <b>5</b> 0326<br>0907<br>W 1564<br>2127   | 3.7<br>0.0<br>3.4<br>0.3  | <b>20</b> 0316<br>0844<br>TH 1555<br>2114   | 3.5<br>0.5<br>3.2<br>0.6  | <b>5</b> 0438<br>1034<br>SA 1655<br>⊕ 2253  | 3.4<br>0.3<br>3.5<br>0.6  | <b>20</b> 0405<br>0935<br>SU 1633<br>2214  | 3.4<br>0.7<br>3.2<br>0.8  |
| <b>6</b> 0254<br>0837<br>M 1526<br>2057    | 3.7<br>0.0<br>3.3<br>0.3 | <b>21</b> 0308<br>0843<br>TU 1555<br>2112  | 3.5<br>0.4<br>3.1<br>0.5 | <b>6</b> 0410<br>1002<br>TH 1639<br>2220  | 3.6<br>0.1<br>3.3<br>0.4  | <b>21</b> 0352<br>0923<br>F 1632<br>2158    | 3.4<br>0.6<br>3.0<br>0.7  | <b>6</b> 0527<br>1148<br>SU 1745            | 3.1<br>0.7<br>0.8         | <b>21</b> 0448<br>1029<br>M 1719<br>⊕ 2314 | 3.2<br>0.9<br>3.0<br>1.0  |
| <b>7</b> 0338<br>0930<br>TU 1613<br>2150   | 3.6<br>0.1<br>3.3<br>0.4 | <b>22</b> 0344<br>0924<br>W 1634<br>2154   | 3.5<br>0.5<br>3.1<br>0.6 | <b>7</b> 0458<br>1103<br>F 1725<br>⊕ 2320 | 3.4<br>0.3<br>3.2<br>0.6  | <b>22</b> 0432<br>1010<br>SA 1714<br>⊕ 2248 | 3.3<br>0.7<br>3.0<br>0.9  | <b>7</b> 0011<br>0634<br>M 1306<br>1848     | 0.8<br>2.8<br>3.0<br>2.9  | <b>22</b> 0542<br>1135<br>TU 1821          | 3.0<br>1.1<br>2.9         |
| <b>8</b> 0425<br>1027<br>W 1703<br>⊕ 2245  | 3.5<br>0.2<br>3.2<br>0.5 | <b>23</b> 0423<br>1009<br>TH 1715<br>2241  | 3.3<br>0.6<br>3.0<br>0.8 | <b>8</b> 0553<br>1213<br>SA 1819          | 3.2<br>0.5<br>3.1         | <b>23</b> 0519<br>1105<br>SU 1804<br>2348   | 3.1<br>0.9<br>2.9<br>1.0  | <b>8</b> 0136<br>0845<br>TU 1414<br>2040    | 0.9<br>2.7<br>2.8<br>2.9  | <b>23</b> 0026<br>0653<br>W 1253<br>1945   | 1.0<br>2.9<br>2.1<br>2.9  |
| <b>9</b> 0518<br>1130<br>TH 1756<br>2346   | 3.3<br>0.3<br>3.1<br>0.6 | <b>24</b> 0506<br>1101<br>⊕ 2335           | 3.2<br>0.7<br>0.9        | <b>9</b> 0031<br>0707<br>SU 1325<br>1930  | 0.8<br>2.9<br>0.6<br>2.9  | <b>24</b> 0616<br>1212<br>M 1907            | 2.9<br>1.0<br>2.8         | <b>9</b> 0246<br>0959<br>W 1512<br>2158     | 0.8<br>2.9<br>3.1<br>0.7  | <b>24</b> 0149<br>0822<br>TH 1412<br>2112  | 0.9<br>2.9<br>1.0<br>3.1  |
| <b>10</b> 0623<br>1236<br>F 1858           | 3.2<br>0.4<br>3.0        | <b>25</b> 0557<br>1200<br>SA 1855          | 3.0<br>2.8<br>2.8        | <b>10</b> 0152<br>0854<br>M 1431<br>2108  | 0.8<br>2.8<br>0.6<br>3.0  | <b>25</b> 0101<br>0727<br>TU 1328<br>2026   | 1.0<br>2.0<br>1.0<br>2.9  | <b>10</b> 0342<br>1050<br>TH 1602<br>2250   | 0.8<br>3.1<br>2.6<br>3.3  | <b>25</b> 0259<br>0945<br>F 1515<br>2214   | 0.6<br>3.1<br>0.7<br>3.3  |
| <b>11</b> 0655<br>0743<br>SA 1344<br>2014  | 0.7<br>3.0<br>0.4<br>3.0 | <b>26</b> 0037<br>0657<br>SU 1306<br>1959  | 1.0<br>2.9<br>0.9<br>2.8 | <b>11</b> 0303<br>1010<br>TU 1529<br>2219 | 0.7<br>3.0<br>0.6<br>3.1  | <b>26</b> 0221<br>0847<br>W 1439<br>2144    | 0.9<br>2.9<br>0.8<br>3.0  | <b>11</b> 0428<br>1134<br>F 1646<br>2333    | 0.4<br>3.2<br>0.4<br>3.4  | <b>26</b> 0352<br>1042<br>SA 1606<br>2305  | 0.3<br>3.3<br>0.5<br>3.5  |
| <b>12</b> 0209<br>0907<br>SU 1446<br>2131  | 0.7<br>3.0<br>0.4<br>3.0 | <b>27</b> 0149<br>0805<br>M 1411<br>2113   | 1.0<br>2.9<br>0.8<br>2.9 | <b>12</b> 0400<br>1105<br>W 1620<br>2311  | 0.5<br>3.1<br>0.5<br>3.3  | <b>27</b> 0326<br>1001<br>TH 1537<br>2241   | 0.6<br>3.0<br>0.6<br>3.3  | <b>12</b> 0507<br>1212<br>SA 1724           | 0.4<br>3.4<br>0.4         | <b>27</b> 0438<br>1130<br>SU 1652<br>2352  | 0.4<br>3.0<br>0.3<br>3.7  |
| <b>13</b> 0318<br>1016<br>M 1543<br>2234   | 0.6<br>3.1<br>0.4<br>3.2 | <b>28</b> 0257<br>0916<br>TU 1509<br>2216  | 0.8<br>2.9<br>0.7<br>3.1 | <b>13</b> 0448<br>1153<br>TH 1705<br>2355 | 0.4<br>3.2<br>0.4<br>3.4  | <b>28</b> 0416<br>1059<br>F 1626<br>2328    | 0.3<br>3.2<br>0.4<br>3.5  | <b>13</b> 0010<br>0540<br>SU 1247<br>● 1758 | 3.5<br>0.3<br>3.3<br>3.4  | <b>28</b> 0521<br>1215<br>M 1736<br>O      | -0.1<br>3.5<br>0.1<br>3.0 |
| <b>14</b> 0413<br>1113<br>TU 1633<br>2325  | 0.5<br>3.2<br>0.3<br>3.3 | <b>29</b> 0352<br>1019<br>W 1559<br>2307   | 0.6<br>3.1<br>0.6<br>3.3 | <b>14</b> 0528<br>1235<br>● 1745          | 0.3<br>3.2<br>0.4         | <b>29</b> 0501<br>1148<br>SA 1711<br>O      | 0.0<br>3.3<br>0.3         | <b>14</b> 0043<br>0610<br>M 1317<br>1827    | 0.4<br>3.4<br>0.4<br>0.5  | <b>29</b> 0038<br>0603<br>TU 1300<br>1819  | 3.8<br>0.2<br>0.6<br>0.1  |
| <b>15</b> 0501<br>1204<br>W 1719           | 0.3<br>3.2<br>0.3        | <b>30</b> 0439<br>1113<br>TH 1645<br>2350  | 0.4<br>3.2<br>0.4<br>3.4 | <b>15</b> 0503<br>0603<br>SA 1313<br>1821 | 3.5<br>3.5<br>3.2<br>0.4  | <b>30</b> 0013<br>0542<br>SU 1235<br>1755   | 3.6<br>-0.1<br>3.4<br>0.1 | <b>15</b> 0113<br>0637<br>TU 1345<br>1856   | 3.5<br>0.4<br>3.5<br>0.3  | <b>30</b> 0125<br>0646<br>W 1342<br>1903   | 3.8<br>0.2<br>3.6<br>0.1  |
| <b>31</b> 0521<br>1202<br>F 1730<br>O      | 0.1<br>3.3<br>0.3        | <b>31</b> 0521<br>1202<br>F 1730<br>O      | 0.1<br>3.3<br>0.3        | <b>31</b> 0058<br>0625<br>M 1321<br>1840  | 3.7<br>-0.2<br>3.4<br>0.1 |   |                           |   |                           |  |                           |

Deduct 20 minutes from HW Greenock for HW Largs. British Summer Time: 29 March to 24 October 2015 inclusive.

\*Add 1 hour BST in shaded areas. ©Crown Copyright and/or database rights. Reproduced by permission of the Controller of Her Majesty's Stationery Office and the UK Hydrographic Office (www.ukho.gov.uk). No liability can be accepted by the Hydrographic Office or Largs Yacht Haven for the consequences of any inaccuracy in prediction.

# LARGS TIDE TABLES 2015

LAT 55°57'N LONG 4°46'W

TIME ZONE UT(GMT)\*

TIMES AND HEIGHTS OF HIGH AND LOW WATERS

| OCTOBER                                   |                          |   |                          | NOVEMBER                                  |                          |   |                          | DECEMBER                                  |                          |  |                          |
|---|--------------------------|---|--------------------------|---|--------------------------|---|--------------------------|---|--------------------------|--|--------------------------|
| Time                                      | m                        | Time                                      | m                        | Time                                      | m                        | Time  | m                        | Time                                      | m                        | Time                                       | m                        |
| <b>1</b> 0209<br>TH 1424<br>1949          | 3.8<br>0.0<br>0.1        | <b>16</b> 0149<br>F 1415<br>1933          | 3.6<br>0.5<br>0.6        | <b>1</b> 0319<br>SU 1522<br>2103          | 3.6<br>3.7<br>0.5        | <b>16</b> 0245<br>M 1502<br>2040            | 3.5<br>3.6<br>0.6        | <b>1</b> 0347<br>TU 0912<br>2130          | 3.3<br>0.8<br>0.7        | <b>16</b> 0313<br>W 1528<br>2116           | 3.5<br>3.7<br>0.5        |
| <b>2</b> 0253<br>F 1504<br>2036           | 3.8<br>0.2<br>0.3        | <b>17</b> 0225<br>SA 1448<br>2013         | 3.6<br>0.6<br>0.6        | <b>2</b> 0403<br>M 1604<br>2159           | 3.3<br>3.5<br>0.7        | <b>17</b> 0327<br>TU 1541<br>2132           | 3.5<br>0.8<br>0.7        | <b>2</b> 0433<br>W 1628<br>2226           | 3.2<br>3.5<br>0.8        | <b>17</b> 0358<br>TH 1613<br>2212          | 3.4<br>0.8<br>0.6        |
| <b>3</b> 0335<br>SA 1545<br>2127          | 3.6<br>0.4<br>0.5        | <b>18</b> 0303<br>SU 1523<br>2058         | 3.5<br>0.6<br>0.7        | <b>3</b> 0452<br>TU 1651<br>C 2309        | 3.1<br>1.0<br>0.9        | <b>18</b> 0411<br>W 1626<br>2231            | 3.4<br>0.9<br>0.8        | <b>3</b> 0523<br>TH 1104<br>C 2332        | 3.0<br>1.1<br>1.0        | <b>18</b> 0446<br>F 1030<br>J 1704<br>2313 | 3.3<br>0.9<br>3.5<br>0.6 |
| <b>4</b> 0419<br>SU 1628<br>C 2226        | 3.4<br>0.7<br>3.4<br>0.7 | <b>19</b> 0343<br>M 1602<br>2149          | 3.4<br>0.8<br>3.4<br>0.8 | <b>4</b> 0550<br>W 1158<br>1747           | 2.9<br>1.2<br>3.2        | <b>19</b> 0502<br>TH 1050<br>1721<br>D 2337 | 3.2<br>1.1<br>3.3<br>0.8 | <b>4</b> 0622<br>F 1213<br>1812           | 2.9<br>1.2<br>3.2        | <b>19</b> 0541<br>SA 1132<br>1807          | 3.2<br>1.0<br>3.3        |
| <b>5</b> 0508<br>M 1119<br>1716<br>2347   | 3.1<br>0.9<br>3.2<br>0.9 | <b>20</b> 0426<br>TU 1646<br>D 2249       | 3.3<br>1.0<br>3.2<br>0.9 | <b>5</b> 0033<br>TH 0716<br>1859          | 1.0<br>2.8<br>3.1        | <b>20</b> 0604<br>F 1159<br>1935            | 3.1<br>3.2               | <b>5</b> 0045<br>SA 0730<br>1918          | 1.0<br>2.9<br>3.1        | <b>20</b> 0021<br>SU 1243<br>1926          | 0.6<br>3.1<br>3.3        |
| <b>6</b> 0612<br>TU 1239<br>1816          | 2.8<br>1.0<br>3.0        | <b>21</b> 0518<br>W 1744                  | 3.1                      | <b>6</b> 0143<br>F 0849<br>1413<br>2029   | 0.9<br>2.9<br>1.1<br>3.1 | <b>21</b> 0050<br>SA 0725<br>1314<br>2003   | 0.7<br>1.1<br>3.1<br>3.2 | <b>6</b> 0151<br>SU 0842<br>1425<br>2031  | 1.0<br>3.0<br>3.1<br>3.1 | <b>21</b> 0131<br>M 0811<br>1356<br>2047   | 0.6<br>1.1<br>3.1<br>3.3 |
| <b>7</b> 0112<br>W 0820<br>1348<br>1953   | 0.9<br>2.7<br>1.0<br>3.0 | <b>22</b> 0000<br>TH 0626<br>1225<br>1907 | 0.9<br>3.0<br>1.2<br>3.0 | <b>7</b> 0239<br>SA 0945<br>1506<br>2135  | 0.8<br>3.1<br>0.9<br>3.2 | <b>22</b> 0200<br>SU 0850<br>1424<br>2117   | 0.6<br>3.2<br>0.9<br>3.4 | <b>7</b> 0245<br>M 0941<br>1516<br>2134   | 0.6<br>3.2<br>1.0<br>3.2 | <b>22</b> 0236<br>TU 0926<br>1502<br>2156  | 0.5<br>3.2<br>3.8<br>3.4 |
| <b>8</b> 0220<br>TH 0935<br>1447<br>2124  | 0.8<br>2.9<br>0.9<br>3.1 | <b>23</b> 0120<br>F 0757<br>1344<br>2038  | 0.8<br>3.0<br>1.1<br>3.1 | <b>8</b> 0326<br>SU 1028<br>1551<br>2224  | 0.7<br>3.3<br>0.7<br>3.4 | <b>23</b> 0300<br>M 0954<br>1523<br>2217    | 0.4<br>3.3<br>0.7<br>3.6 | <b>8</b> 0331<br>TU 1029<br>1600<br>2225  | 0.8<br>3.3<br>0.8<br>3.3 | <b>23</b> 0333<br>W 1026<br>1559<br>2255   | 0.4<br>3.4<br>3.6<br>3.5 |
| <b>9</b> 0315<br>F 1024<br>1537<br>2219   | 0.7<br>3.1<br>0.7<br>3.3 | <b>24</b> 0230<br>SA 0921<br>1451<br>2146 | 0.6<br>3.1<br>0.8<br>3.4 | <b>9</b> 0407<br>M 1107<br>1631<br>2305   | 0.6<br>3.4<br>1.2<br>3.4 | <b>24</b> 0352<br>TU 1046<br>1614<br>2310   | 0.2<br>3.5<br>0.5<br>3.7 | <b>9</b> 0411<br>W 1112<br>1639<br>2308   | 0.7<br>3.4<br>0.7<br>3.4 | <b>24</b> 0425<br>TH 1117<br>1648<br>2349  | 0.3<br>3.5<br>0.4<br>3.5 |
| <b>10</b> 0400<br>SA 1106<br>1621<br>2302 | 0.5<br>3.3<br>0.6<br>3.4 | <b>25</b> 0326<br>SU 1020<br>1545<br>2240 | 0.3<br>3.4<br>0.6<br>3.6 | <b>10</b> 0443<br>TU 1143<br>1706<br>2341 | 0.6<br>3.5<br>0.6<br>3.5 | <b>25</b> 0440<br>W 1133<br>1700<br>2348    | 0.6<br>3.1<br>0.3        | <b>10</b> 0448<br>TH 1150<br>1714<br>2348 | 0.7<br>3.5<br>0.6<br>3.4 | <b>25</b> 0512<br>F 1203<br>1734<br>2307   | 0.3<br>3.7<br>0.3        |
| <b>11</b> 0439<br>SU 1142<br>1659<br>2340 | 0.5<br>3.4<br>0.5<br>3.5 | <b>26</b> 0414<br>M 1109<br>1632<br>2330  | 0.1<br>3.5<br>0.3<br>3.7 | <b>11</b> 0515<br>W 1217<br>1737          | 0.6<br>3.5<br>0.6        | <b>26</b> 0000<br>TH 0525<br>1218<br>1744   | 3.7<br>0.1<br>3.7<br>0.2 | <b>11</b> 0521<br>F 1225<br>1747          | 0.7<br>3.6<br>0.6        | <b>26</b> 0039<br>SA 0557<br>1246<br>1816  | 3.6<br>0.3<br>3.7<br>0.3 |
| <b>12</b> 0513<br>M 1215<br>1732          | 0.4<br>3.4<br>0.5        | <b>27</b> 0459<br>TU 1154<br>1717         | 0.0<br>3.6<br>0.2        | <b>12</b> 0015<br>TH 0544<br>1249<br>1806 | 3.5<br>0.6<br>3.6<br>0.6 | <b>27</b> 0050<br>F 0609<br>1301<br>1827    | 3.7<br>0.2<br>3.8<br>0.2 | <b>12</b> 0027<br>SA 0553<br>1258<br>1820 | 3.5<br>0.6<br>3.7        | <b>27</b> 0126<br>SU 0640<br>1327<br>1856  | 3.5<br>3.4<br>3.8<br>3.3 |
| <b>13</b> 0014<br>TU 0542<br>1246<br>1801 | 3.5<br>0.5<br>3.4<br>0.5 | <b>28</b> 0018<br>W 0542<br>1238<br>1800  | 3.8<br>0.1<br>3.7<br>0.1 | <b>13</b> 0050<br>F 0613<br>1320<br>1837  | 3.5<br>0.6<br>3.6<br>0.6 | <b>28</b> 0137<br>SA 0653<br>1342<br>1911   | 3.7<br>0.3<br>3.8<br>0.3 | <b>13</b> 0107<br>SU 0629<br>1332<br>1858 | 3.5<br>0.6<br>3.7<br>0.5 | <b>28</b> 0209<br>M 0721<br>1406<br>1936   | 3.5<br>0.5<br>3.8<br>0.4 |
| <b>14</b> 0045<br>W 0610<br>1316<br>1829  | 3.5<br>0.5<br>3.5<br>0.5 | <b>29</b> 0106<br>TH 0626<br>1320<br>1843 | 3.8<br>0.0<br>3.7<br>0.1 | <b>14</b> 0126<br>SA 0646<br>1351<br>1913 | 3.6<br>0.6<br>3.7<br>0.6 | <b>29</b> 0221<br>SU 0738<br>1422<br>1954   | 3.6<br>0.4<br>3.8<br>0.4 | <b>14</b> 0148<br>M 0710<br>1408<br>1939  | 3.5<br>0.6<br>3.7<br>0.5 | <b>29</b> 0249<br>TU 0803<br>1444<br>2017  | 3.4<br>3.8<br>0.5<br>0.4 |
| <b>15</b> 0115<br>TH 0637<br>1345<br>1858 | 3.6<br>0.5<br>3.5<br>0.5 | <b>30</b> 0152<br>F 0710<br>1401<br>1928  | 3.8<br>0.1<br>3.8<br>0.2 | <b>15</b> 0205<br>SU 0725<br>1425<br>1954 | 3.6<br>0.6<br>3.7<br>0.6 | <b>30</b> 0304<br>M 0824<br>1502<br>2040    | 3.5<br>0.6<br>3.7<br>0.5 | <b>15</b> 0230<br>TU 0755<br>1447<br>2026 | 3.5<br>0.6<br>3.7        | <b>30</b> 0328<br>W 0845<br>1523<br>2100   | 3.3<br>3.6<br>3.7<br>0.6 |
|   |                          | <b>31</b> 0236<br>SA 0756<br>1441<br>2014 | 3.7<br>0.3<br>3.7<br>0.3 |   |                          |   |                          |   |                          | <b>31</b> 0408<br>TH 0928<br>1603<br>2146  | 3.2<br>3.6<br>3.8<br>0.7 |

Deduct 20 minutes from HW Greenock for HW Largs. British Summer Time: 29 March to 24 October 2015 inclusive.

\*Add 1 hour BST in shaded areas. ©Crown Copyright and/or database rights. Reproduced by permission of the Controller of Her Majesty's Stationery Office and the UK Hydrographic Office (www.ukho.gov.uk). No liability can be accepted by the Hydrographic Office or Largs Yacht Haven for the consequences of any inaccuracy in prediction.



# JACHTHAVEN BIESBOSCH

## Our new Dutch Marina

### A HAVEN OF PEACE AND TRANQUILITY IN THE HEART OF THE BEAUTIFUL BIESBOSCH NATURE RESERVE

We have recently acquired this fantastic 1400 berth inland marina in the south of the Netherlands. Approximately 50km from sea, Jachthaven Biesbosch is adjacent to the 90 sq km wetlands of the beautiful Biesbosch nature reserve and centrally located on the broad river Amer, known as the “Gentle river”.

For a new boating experience we encourage you to explore the 3732 km of inland waterways that link the whole of the Netherlands and stretch into the Rhine in Germany and the Meuse in Belgium and France.

The area is renowned for its friendly, laid-back atmosphere and the Biesbosch provides a unique sailing environment, in a location renowned for its year-round activities. Hiking, boating, canoeing, biking, fishing, bird-watching, horse-riding, and swimming are just some of the excursions available throughout the year.



First-class boating facilities sit comfortably alongside welcoming water-terrace restaurants and the marina is particularly good at giving its customers an air of being looked after.

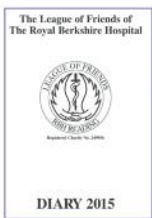
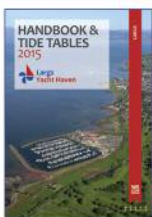
We believe the Netherlands is the place to visit this summer, packed with interesting places to go and things to see, all accessible by water, and there you will find good food and drink and friendly English speaking locals.

To find out more visit [www.jachthavenbiesbosch.nl](http://www.jachthavenbiesbosch.nl)



# Jessail

**SAIL REPAIRS – CANVAS WORK  
UPHOLSTERY – INDUSTRIAL SEWING**  
**58 Glasgow Street, Ardrossan KA22 8EH**  
**01294 467311 / 07771 970578**  
**jessail@btinternet.com**



**We've got it covered**

Fundraising  
Diaries  
Address Books  
Souvenir Programmes  
Area Guides  
Annual Reports  
Business Directories  
Hospital & Charity Magazines

**To advertise in publications like this one and  
for all your publishing requirements please contact**

**Horizon Publishing, Millstream Business Centre,  
12 Millstream, Ringwood, Hampshire BH24 3SE  
Tel: 01425 470950 Fax: 01425 477078  
Email: [office@horizon-publishing.co.uk](mailto:office@horizon-publishing.co.uk)**



# USEFUL CONTACT NUMBERS

|                                      |               |                               |                            |
|--------------------------------------|---------------|-------------------------------|----------------------------|
| Marina Office                        | 01475 675333  | <b>RIGGING/YACHT GRAPHICS</b> |                            |
| Largs Sailing Club                   | 01475 670000  | Autograph                     | 0141 882 2200              |
| Clyde Cruising Club                  | 0141 2212774  | Mast & Rigging                | 01475 670110               |
| <b>YACHT HAVEN SHOPPING</b>          |               | <b>TRAVEL</b>                 |                            |
| Haven Spa                            | 01475 670444  | Brisbane Taxis                | 01475 689990/687171/674128 |
| Largs Chandlers                      | 01475 686026  | Largs Central Taxis           | 687119/560123              |
| <b>SUB AQUA AND DIVERS</b>           |               | Mapes Bike Hire               | 01475 530444               |
| C&C Marine Services                  | 01475 687180  | Glasgow Airport               | 0870 400008                |
| <b>ELECTRICAL/ELECTRONIC</b>         |               | Prestwick Airport             | 01292 479822               |
| Boat Electrics & Electronics Ltd     | 01292 315355  | <b>MARITIME SAFETY</b>        |                            |
| David Belding Boatyard Services      | 01475 686026  | Caledonian Canal              | 01463 233140               |
| DDZ Marine Ltd                       | 01475 686072  | Clydeport                     | 0141 221 8733              |
| Yacht Electrical and Electronics     | 01475 522244  | Crinan Canal                  | 01546 603210               |
| <b>YACHT SALES AND BROKERAGE</b>     |               | HM Customs                    | 0845 010 9000              |
| Euroyachts                           | 01475 674764  | H2O Fire Protection           | 01475 673068               |
| DDZ Marine                           | 01475 686072  | Belfast Coastguard            | 02891 463933               |
| <b>ENGINEERING/REPAIRS</b>           |               | <b>PUBLIC SERVICES</b>        |                            |
| C&C Marine Services                  | 01475 687180  | Doctor                        | 01475 673380/674545        |
| David Belding Boatyard Services      | 01475 686026  | Hospital (Greenock)           | 01475 633777               |
| DDZ Marine Ltd                       | 01475 686072  | Largs Police Station          | 01475 674651               |
| North Western Automarine Engineers   | 01475 687139  | NHS 24 Hour                   | 0845 4242424               |
| Quay Marine                          | 01475 568624  | Post Office                   | 01475 673137               |
| The Outboard Shop                    | 01475 560324  | Dentist                       | 01475 673399/672009        |
| <b>MARINE SURVEYORS</b>              |               | Pharmacy                      | 01475 687187               |
| Marcon Marine Consultants            | 0141 4452525  | <b>FOOD AND DRINK</b>         |                            |
| Teem Surveys                         | 01698 826886  | Bosuns Table                  | 01475 689198               |
| McGruers                             | 01436 831313  | Scotts Restaurant             | 01475 686684               |
| Ian Catterson                        | 01475 530326  | Lounge                        | 01475 689968               |
| <b>YACHT CHARTER/SAILING SCHOOLS</b> |               | Nardinis                      | 01475 675000               |
| Catima Sailing                       | 07711 635923  | The Village Inn, Fairlie      | 01475 568432               |
| Cumbræ Voyages                       | 0845 257 0404 | The Catch at Fins             | 01475 568989               |
| Flamingo Yacht Charter               | 01475 686088  | <b>ACCOMMODATION</b>          |                            |
| Scotsail                             | 0845 834 0335 | Brisbane House Hotel          | 01475 687200               |
| Scottish Sailing Institute           | 01475 670011  | Haylie Hotel                  | 01475 673207               |
| Sport Scotland                       | 01475 530757  | The Old Rectory               | 01475 674405               |
| Tony Walton                          | 01475 673850  | Woodhouse Hotel               | 01475 673381               |
| Sailaway Charter                     | 0845 528 1011 | No 62 Irvine Road             | 01475 686268               |
| <b>YACHT INSURANCE</b>               |               | Northend                      | 01475 670025               |
| Haven Knox Johnston                  | 01732 223600  | <b>SAILMAKERS</b>             |                            |
| Porthcawl Insurance Consultants Ltd  | 01656 784866  | Jessail                       | 01294 467311               |
| Saga                                 | 0800 092 4022 | Leitch Sails                  | 01880 820287               |
| <b>BOAT TRANSPORT</b>                |               | Owen Sails                    | 01631 720485               |
| John Shepherd                        | 07836 706119  | Saturn Sails                  | 01475 689933               |



# INDEX OF ADVERTISERS

|                                       |     |  |    |
|---------------------------------------|-----|--|----|
| Anodes Direct .....                   | 14  | Mapes Bike Hire .....                    | 12 |
| Boat Electrics & Electronics Ltd..... | 14  | Mast and Rigging.....                    | 8  |
| Bosun's Table.....                    | 22  | National Centre Cumbrae .....            | 18 |
| Cecchinis Restaurant & Bar .....      | 12  | North Western Automarine Engineers ..... | 30 |
| Cumbrae Voyages.....                  | 14  | Owen Sails .....                         | 32 |
| David Belding .....                   | 4   | Quay Marine .....                        | 32 |
| DDZ Marine Ltd.....                   | OBC | Rigit .....                              | 18 |
| DDZ Marine Garmin .....               | 8   | Saturn Sails.....                        | 8  |
| Eberspächer.....                      | 14  | SJ Marine Services.....                  | 32 |
| Equipage Marine .....                 | 32  | Scotts Bar & Restaurant .....            | 23 |
| Euroboat International .....          | 18  | Teem Surveys .....                       | 14 |
| Euroyachts .....                      | IFC | The Douglas Hotel .....                  | 12 |
| Fencebay .....                        | 30  | The Old Rectory.....                     | 32 |
| Hastie of Largs .....                 | 12  |  |    |
| Haven Knox-Johnston.....              | IBC |  |    |
| Horizon Publishing.....               | 38  |  |    |
| ICA Marine .....                      | 18  |  |    |
| Jessail .....                         | 38  |  |    |
| John Shepherd Boat Transport .....    | 32  |  |    |
| Largs Chandlers.....                  | 30  |  |    |
| Largs Sailing Club.....               | 8   |  |    |
| Leitch Sails.....                     | 32  |  |    |

Published by Horizon Publishing Ltd,  
 Millstream Business Centre, 12 Millstream,  
 Ringwood, Hampshire BH24 3SE  
 Tel: 01425 470950 Fax: 01425 477078  
 Email: [office@horizon-publishing.co.uk](mailto:office@horizon-publishing.co.uk)

Horizon Publishing Ltd.© No reproduction by any form,  
 copying or recording, image scanning may be allowed  
 without written consent of the publishers.



# Specialists in boat insurance

Together we've got it covered

**Windsor:** 13.30 Mon 13 May

**Weather:** Overcast/breezy

**Boat:** Fairline Targa

**Location:** Upstream of Monkey Island

**Sonia Hook**, Haven Knox-Johnston's Marketing and Business Development Co-ordinator, visits one of the Thames leading marinas with Yacht Broker, Neil Davey

Up to  
**15%  
discount**  
for Yacht  
Haven Berth  
Holders



Call now on 01732 223650 or visit  
[www.boatinsure.co.uk](http://www.boatinsure.co.uk)

**Haven**  
Knox-Johnston

An **amlin** company



**BENETEAU**

**POWER BOATS SCOTLAND**



Swift Trawler 34,44,50,52ft



Antares 19-45ft



Flyer GT 34-49ft



**DDZ MARINE LTD**

**ELECTRICAL • MECHANICAL • ELECTRONIC • HEATING SALES •  
SERVICE • INSTALLATION  
FULL UNDERCOVER REPAIR FACILITY**

**01475 686072**

[www.ddzmarine.com](http://www.ddzmarine.com)

[sales@ddzmarine.co.uk](mailto:sales@ddzmarine.co.uk)

All Major Marine Dealerships held on site at Largs Yacht Haven



Bavaria 33 Cruiser



**BAVARIA CRUISER RANGE 33 - 56FT  
BAVARIA VISION RANGE 42 - 52FT**



Bavaria 46 Vision

**VOLVO  
PENTA**