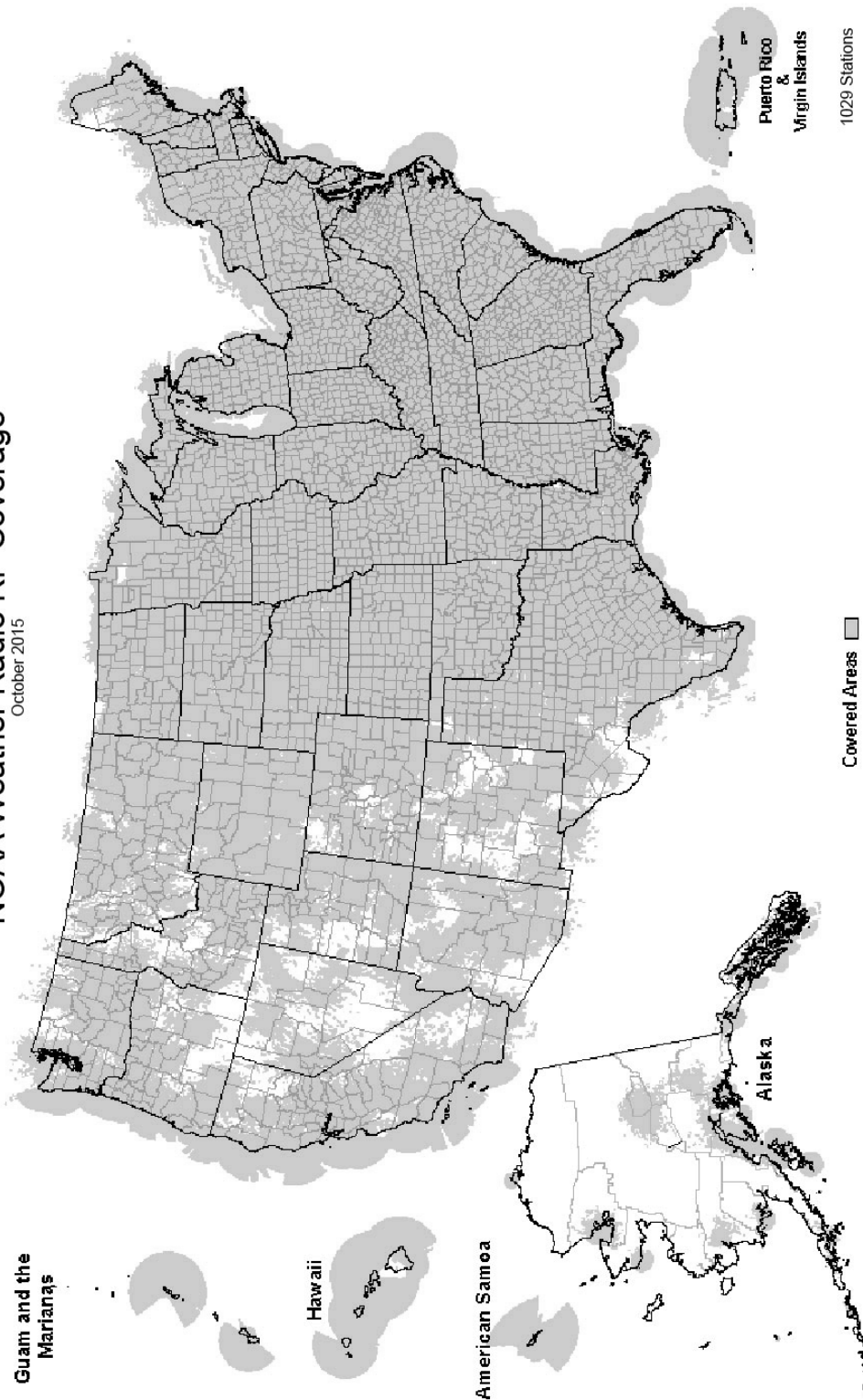
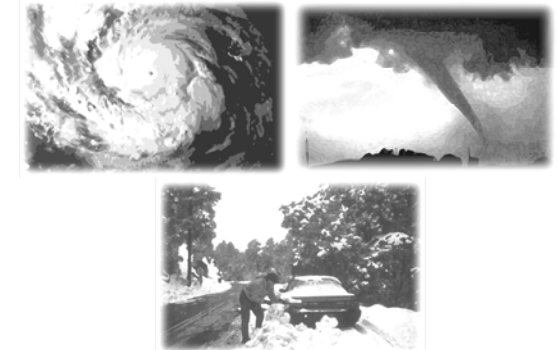
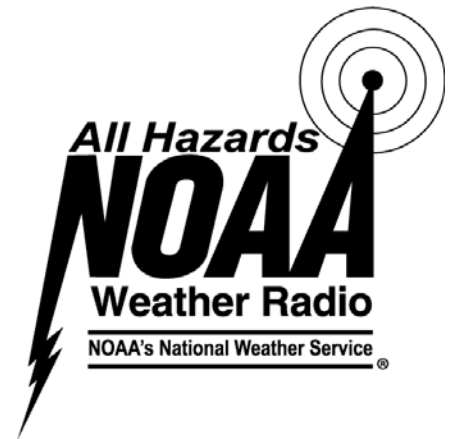


**NOAA Weather Radio RF Coverage**  
October 2015



NOAA/PA 94062  
Rev October 2015



**The Voice of NOAA's  
National Weather Service**

< Over 1000 Transmitters >

**Broadcasting Continuous  
Weather Information on the  
Following Frequencies:**

- 162.400 MHz
- 162.425 MHz
- 162.450 MHz
- 162.475 MHz
- 162.500 MHz
- 162.525 MHz
- 162.550 MHz

U.S. Department of Commerce  
National Oceanic and Atmospheric Administration  
National Weather Service

<http://www.weather.gov/nwr/>

# NOAA WEATHER RADIO

The Voice of NOAA's National Weather Service

<http://www.weather.gov/nwr>

NOAA Weather Radio is a service of the National Oceanic and Atmospheric Administration (NOAA) of the U.S. Department of Commerce. As the "voice of the National Weather Service," it provides continuous broadcasts (24 hours a day) of the latest weather information from local National Weather Service offices. Weather messages are repeated every 4 to 6 minutes and are routinely updated every 1 to 6 hours or more frequently in rapidly changing local weather or if a nearby natural hazardous or manmade condition exists.



The regular broadcasts are specifically tailored to weather information needs of the people within the service area of the transmitter. For example, in addition to general weather information, stations in coastal areas provide information of interest to mariners. Other specialized information, such as hydrological forecasts and other climate data may be broadcast.

During severe weather, National Weather Service

forecasters can interrupt the routine weather broadcasts and insert special warning messages concerning imminent threats to life and property. The forecaster can also add special signals to warnings that trigger "alerting" features of specially equipped receivers. In the simplest case, this signal activates audible or visual alarms, indicating that an emergency condition exists within the broadcast areas of the station being monitored, and alerts the listener to turn up the volume and stay tuned for more information. More sophisticated receivers are automatically turned on and set to an audible volume when an alert is received.

In the most sophisticated alerting system, NOAA Weather Radio Specific Area Message Encoding (SAME), digital coding is employed to activate only those special receivers programmed for specific emergency conditions in specific area, typically a county. SAME can activate specially equipped radio and cable television receivers and provide a short text message that identifies the location and type of emergency. SAME is the primary activator for the FCC Emergency Alert System (EAS).

To program NWR SAME receivers with the proper county(s) and marine area(s) of choice, you need to know the 6-digit SAME code number(s) for that county(s). Once you have your code number(s), follow the manufacturer's directions for programming your NWR SAME receiver. You can obtain your SAME code numbers by dialing:

**888-NWR-SAME (888-697-7263)** – Voice & TTY/TTD Accessible

Under a January 1975 White House policy statement, NOAA Weather Radio was designated the sole Government-operated radio system to provide direct warning into private homes for both

San Juan.....162.400	Big Spring.....162.475	UTAH	Beckley.....162.550
RHODE ISLAND	Borger.....162.400	Bear Lake.....162.500	Charleston.....162.400
Providence.....162.400	Brownsville.....162.550	Castle Dale.....162.500	Clarksburg.....162.550
SOUTH CAROLINA	Bryan.....162.550	Coalville/ Park City.....162.475	Garfield.....162.500
Aiken.....162.450	Burkeville.....162.425	Escalante.....162.425	Gilbert.....162.475
Aynor.....162.400	Carrizo Springs.....162.550	Lake Powell.....162.550	Greggs Knob.....162.500
Barnwell.....162.500	Center.....162.525	Logan.....162.400	Hinton.....162.425
Beaufort.....162.450	Childress.....162.525	Manti.....162.425	Monterville.....162.525
Charleston.....162.550	Cisco.....162.500	Milford/Cedar City.....162.400	Moorefield.....162.400
Cheraw.....162.450	Coleman.....162.475	Moab.....162.475	Morgantown.....162.475
Columbia.....162.400	Corpus Christi.....162.550	Monticello.....162.450	Sutton.....162.450
Cross.....162.475	Corsicana.....162.525	Salt Lake City.....162.550	WISCONSIN
Florence.....162.550	Cumby.....162.500	St. George.....162.475	Ashland.....162.525
Georgetown.....162.500	Dallas.....162.400	Tabiona.....162.550	Baraboo.....162.450
Greenville.....162.550	Del Rio.....162.400	Tooele (South Mountain).....162.450	Black River Falls.....162.500
Jasper County.....162.400	D'Hanis.....162.525	Tooele (Vernon Hills).....162.525	Coloma.....162.400
Kirksey.....162.425	Dickens.....162.500	Vernal.....162.400	Crandon.....162.450
Orangeburg.....162.525	Dilley.....162.500	Wendover.....162.475	Dubuque.....162.400
Rock Hill.....162.425	El Paso.....162.475	VERMONT	Fond Du Lac.....162.500
Sumter.....162.425	El Paso Spanish.....162.550	Burlington.....162.400	Green Bay.....162.550
SOUTH DAKOTA	Fort Worth.....162.550	Castleton.....162.500	Gresham.....162.500
Aberdeen.....162.475	Galveston.....162.550	Marlboro.....162.425	Janesville.....162.425
Arlington.....162.525	Gilmer.....162.425	St. Johnsbury.....162.425	Ladysmith.....162.550
Faith.....162.475	Gonzales.....162.525	Windsor.....162.475	Madison.....162.550
Firesteel.....162.425	Guadalupe Mt Nat'l. Park.....162.525	VIRGIN ISLANDS	Menomonie.....162.400
Hot Springs.....162.425	Harlingen Spanish.....162.450	St. Croix.....162.500	Milwaukee.....162.400
Lead.....162.525	Junction.....162.475	Kerrville.....162.450	New London.....162.525
Lowry.....162.500	Kerrville.....162.450	La Grange.....162.500	Park Falls.....162.500
Mitchell.....162.450	La Grange.....162.500	Laredo.....162.550	Prairie Du Chien.....162.500
Philip.....162.450	Laredo.....162.550	Llano.....162.425	Racine.....162.450
Pickstown.....162.425	Llano.....162.425	Lubbock.....162.400	Rhineland.....162.400
Pierre.....162.400	Lubbock.....162.400	Lufkin.....162.550	Richland Center.....162.475
Porcupine.....162.500	Lufkin.....162.550	Marietta.....162.525	Sheboygan.....162.525
Rapid City.....162.550	Marietta.....162.525	Miami.....162.450	Sister Bay.....162.425
Reliance.....162.525	Miami.....162.450	Midland/Odessa.....162.400	Spooner.....162.475
Sioux Falls.....162.400	Midland/Odessa.....162.400	Milano.....162.525	Tomah.....162.525
South Shore.....162.425	Milano.....162.525	Mineral Wells.....162.525	Wausau.....162.475
Wessington.....162.550	Mineral Wells.....162.525	Muenster.....162.425	Wausaukee.....162.400
White River.....162.550	Muenster.....162.425	New Taiton.....162.450	Winona.....162.425
TENNESSEE	New Taiton.....162.450	Onalaska.....162.500	Withee.....162.425
Bristol.....162.550	Onalaska.....162.500	Ozona.....162.500	WYOMING
Centerville.....162.450	Ozona.....162.500	Palestine.....162.450	Afton.....162.475
Chattanooga.....162.550	Palestine.....162.450	Paris.....162.550	Casper.....162.400
Clarksville.....162.500	Paris.....162.550	Pecos.....162.450	Cheyenne.....162.550
Clifton.....162.500	Pecos.....162.450	Perryton.....162.475	Cody.....162.400
Cookeville.....162.400	Perryton.....162.475	Pharr.....162.400	Dubois.....162.450
Dyersburg.....162.500	Pharr.....162.400	Pharr Spanish.....162.475	Elk Plaza.....162.425
Hickman.....162.500	Pharr Spanish.....162.475	Plainview.....162.450	Evanston.....162.450
Jackson.....162.550	Plainview.....162.450	Port O'Connor.....162.475	Gillette.....162.500
Knoxville.....162.475	Port O'Connor.....162.475	Richland Springs.....162.525	Glendo.....162.450
La Follette.....162.450	Richland Springs.....162.525	Richmond.....162.475	Grant Village.....162.450
Lafayette.....162.525	Richmond.....162.475	Rio Grande City.....162.425	Jackson.....162.525
Lawrenceburg.....162.425	Rio Grande City.....162.425	Riviera.....162.525	Kaycee.....162.550
Lobelville.....162.525	Riviera.....162.525	San Angelo.....162.550	Kemmerer.....162.525
Memphis.....162.475	San Angelo.....162.550	San Antonio.....162.550	Lander.....162.475
Nashville.....162.550	San Antonio.....162.550	Seguin.....162.475	Newcastle.....162.475
Shelbyville.....162.475	Seguin.....162.475	Seminole.....162.425	Pinedale.....162.500
Spencer.....162.450	Seminole.....162.425	Sherman.....162.475	Rawlins.....162.425
Vale.....162.450	Sherman.....162.475	Stephenville.....162.450	Rock Springs.....162.550
Waverly.....162.400	Stephenville.....162.450	Summerfield.....162.500	Sheridan.....162.475
Winchester.....162.525	Summerfield.....162.500	Sweetwater.....162.425	Thermopolis.....162.500
TEXAS	Sweetwater.....162.425	Texarkana.....162.550	West VIRGINIA
Abilene.....162.400	Texarkana.....162.550	Three Rivers.....162.450	Backbone Mountain.....162.450
Alpine.....162.550	Three Rivers.....162.450	Throckmorton.....162.425	
Amarillo.....162.550	Throckmorton.....162.425	Tomball.....162.400	
Austin.....162.400	Tomball.....162.400	Tyler.....162.475	
Bay City.....162.425	Tyler.....162.475	Uvalde.....162.425	
Beaumont.....162.475	Uvalde.....162.425	Victoria.....162.400	
	Victoria.....162.400	Waco.....162.475	
	Waco.....162.475	Wichita Falls.....162.475	
	Wichita Falls.....162.475		

The National Weather Service requests your assistance in reporting any outages of NOAA Weather Broadcast Stations.

Please use our Toll Free Number (888) 697-7263 or send an Email to [nwroutage@noaa.gov](mailto:nwroutage@noaa.gov) to report the outage.

Crocker .....	162.500	Ord.....	162.525
Doniphan .....	162.450	Oshkosh .....	162.525
El Dorado Springs.....	162.475	Scottsbluff .....	162.475
Fredericktown .....	162.500	Shubert .....	162.500
Gainesville .....	162.425	Sidney .....	162.500
Hannibal.....	162.475	Superior.....	162.525
Hermitage .....	162.450	Trenton .....	162.500
Jamestown .....	162.425	Valentine.....	162.450
Joplin .....	162.550	Yankton .....	162.500
Kansas City.....	162.550		
La Plata.....	162.525		
Lancaster .....	162.550		
Maryville.....	162.425		
Medill .....	162.450		
Neosho .....	162.450		
Piedmont.....	162.425		
Springfield.....	162.400		
St. Louis.....	162.550		
Summersville .....	162.475		
Trenton .....	162.500		
Wardell.....	162.525		
West Plains.....	162.525		

<b>MONTANA</b>			
Baker .....	162.550		
Belgian Hill.....	162.500		
Billings .....	162.550		
Bozeman .....	162.500		
Broadus .....	162.425		
Browning .....	162.525		
Butte .....	162.550		
Circle .....	162.550		
Dillon .....	162.475		
Ekalaka.....	162.475		
Forsyth.....	162.525		
Glasgow.....	162.400		
Glendive.....	162.475		
Glentana .....	162.525		
Great Falls .....	162.550		
Hardin .....	162.450		
Havre .....	162.400		
Helena .....	162.400		
Jordan .....	162.500		
Kalispell .....	162.550		
Lewistown .....	162.500		
Livingston.....	162.525		
Malta .....	162.475		
Miles City .....	162.400		
Missoula.....	162.400		
Plentywood .....	162.475		
Poplar .....	162.425		
Ryegate .....	162.450		
Scobey.....	162.450		
Wibaux.....	162.500		
Winnett.....	162.400		

<b>NEVADA</b>			
Battle Mtn.....	162.425		
Bullhead City.....	162.500		
Elko.....	162.550		
Ely.....	162.400		
Eureka .....	162.550		
Fernley.....	162.450		
Hawthorne .....	162.475		
Jackpot .....	162.500		
Las Vegas.....	162.550		
Owyhee .....	162.450		
Pahrump.....	162.400		
Reno.....	162.550		
Tonopah .....	162.400		
Winnemucca.....	162.400		

<b>NEW HAMPSHIRE</b>			
Clarksville.....	162.400		
Concord .....	162.400		
Deerfield .....	162.450		
Hanover .....	162.525		
Holderness.....	162.550		
Mt. Washington.....	162.500		
Pack Monadnock .....	162.525		

<b>NEW JERSEY</b>			
Atlantic City.....	162.400		
Hardyston .....	162.500		
Southard .....	162.450		

<b>NEW MEXICO</b>			
Albuquerque .....	162.400		
Artesia .....	162.425		
Carlsbad .....	162.475		
Des Moines.....	162.550		
Farmington.....	162.475		
Hobbs .....	162.400		
Las Cruces.....	162.400		
Portales .....	162.475		
Roswell .....	162.450		
Ruidoso .....	162.550		
Santa Fe .....	162.550		
Silver City.....	162.425		

<b>NEW YORK</b>			
Albany .....	162.550		
Binghamton.....	162.475		
Buffalo .....	162.550		
Call Hill .....	162.425		
Cattaraugus .....	162.425		
Cooperstown.....	162.450		
Elmira .....	162.400		
Frewsburg.....	162.525		
Gore Mtn.....	162.450		
Highland .....	162.475		
Ithaca.....	162.500		
Lyons.....	162.475		
Middleville .....	162.425		
Mt. Washington.....	162.450		
Mullen .....	162.425		
Norfolk .....	162.550		
North Platte.....	162.550		
Omaha .....	162.400		

Spencerport .....	162.525		
Stamford.....	162.400		
Syracuse.....	162.550		
Walton .....	162.425		
Watertown .....	162.475		
White Hill .....	162.525		

<b>NORTH CAROLINA</b>			
Asheville .....	162.400		
Buck Mountain.....	162.500		
Cape Hatteras .....	162.475		
Chapel Hill .....	162.550		
Charlotte .....	162.475		
Ellerbe .....	162.400		
Garner .....	162.450		
Henderson .....	162.500		
Linville .....	162.450		
Mamie.....	162.425		
Margarettsville .....	162.450		
Mooreville .....	162.525		
Mount Jefferson .....	162.500		
New Bern .....	162.400		
Robbinsville .....	162.525		
Rocky Mount.....	162.475		
Saint Pauls .....	162.475		
Warsaw .....	162.425		
Windsor .....	162.525		
Winnabow.....	162.550		
Winston-Salem .....	162.400		

<b>NORTH DAKOTA</b>			
Bismarck .....	162.475		
Cavalier .....	162.450		
Dickinson.....	162.400		
Fargo .....	162.475		
Fort Ransom.....	162.525		
Grand Forks.....	162.475		
Jamestown .....	162.550		
Langdon .....	162.500		
Minot.....	162.400		
New Town.....	162.525		
Petersburg.....	162.400		
Rolla .....	162.475		
Scranton .....	162.525		
Sheyenne .....	162.525		
Steele .....	162.400		
Webster .....	162.425		
Williston .....	162.550		
Willow City.....	162.450		

<b>NORTHERN MARIANA ISLANDS</b>			
Saipan .....	162.550		

<b>OHIO</b>			
Akron .....	162.400		
Athens .....	162.425		
Bridgeport .....	162.525		
Carey .....	162.525		
Chillicothe .....	162.500		
Cleveland .....	162.550		
Columbus .....	162.550		
Dayton .....	162.475		
Grafton .....	162.500		
High Hill .....	162.475		
Lima .....	162.400		
Mansfield .....	162.450		
Marietta .....	162.400		
New Philadelphia .....	162.425		
Otway .....	162.525		
Sandusky .....	162.400		
Toledo .....	162.500		
Youngstown.....	162.500		

<b>OKLAHOMA</b>			
Altus .....	162.425		
Antlers .....	162.400		
Ardmore.....	162.525		
Atoka .....	162.500		
Bartlesville .....	162.425		
Broken Bow .....	162.450		
Chickasha.....	162.450		
Clinton .....	162.525		
Enid .....	162.475		
Grove.....	162.525		
Guymon.....	162.500		
Lawton .....	162.550		
McAlester .....	162.475		
Oklahoma City .....	162.400		
Oktaha .....	162.525		
Ponca City .....	162.450		
Stillwater .....	162.500		
Tulsa.....	162.550		
Wewoka.....	162.550		
Woodward .....	162.500		

<b>OREGON</b>			
Bend/Redmond.....	162.500		
Brookings .....	162.550		
Burns Butte.....	162.475		
Cape Blanco .....	162.425		
Carney Butte.....	162.475		
Coos Bay.....	162.400		
Eugene .....	162.400		
Florence .....	162.500		
Fossil.....	162.550		
Hepner .....	162.425		
John Day .....	162.500		
Klamath Falls.....	162.550		
Medford .....	162.400		
Mt Hebo .....	162.525		
Mt. Ashland .....	162.475		
Neahkahnie .....	162.425		
Newport .....	162.550		
Portland.....	162.550		
Reedsport.....	162.525		
Roseburg.....	162.550		
Salem .....	162.475		
Spout Springs.....	162.400		
The Dalles .....	162.400		
Tillamook .....	162.475		

<b>PENNSYLVANIA</b>			
Allentown .....	162.400		
Altoona .....	162.425		
Clearfield .....	162.550		
Coudersport.....	162.500		
Erie .....	162.400		
Harrisburg.....	162.550		
Hibernia Park.....	162.425		
Honesdale .....	162.450		
Huntingdon .....	162.525		
Johnstown .....	162.400		
Meadville .....	162.475		
Parker .....	162.425		
Philadelphia.....	162.475		
Pittsburgh .....	162.550		
Punxsutawney .....	162.500		
State College.....	162.475		
Towanda.....	162.525		
Warren .....	162.450		
Wellsboro .....	162.475		
Wilkes-Barre .....	162.550		
Williamsport.....	162.400		

<b>PUERTO RICO</b>			
Maricao.....	162.550		

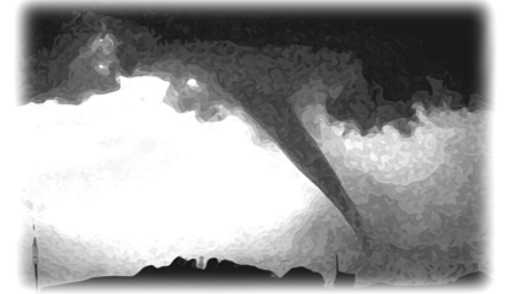
natural disasters and nuclear attack. This concept has been expanded to include warnings for all hazardous conditions that pose a threat to life and safety, both at a local and national level. As a result, NOAA Weather Radio is being better integrated with other National Weather Service systems to provide state and local emergency managers and other warning providers better access to local weather forecast offices, allowing hazard warnings of all types to be broadcast on NOAA Weather Radio within seconds

NOAA Weather Radio currently broadcasts from 1029 stations in fifty states, Puerto Rico, the U.S. Virgin Islands, American Samoa, Guam, and Saipan on seven frequencies in the VHF band, ranging from 162.400 to 162.550 megahertz (MHz). These frequencies are outside the normal AM or FM broadcast bands.

Special radios that receive only NOAA Weather Radio, both with and without special alerting features, are available from numerous manufacturers. In addition, other manufacturers are including NWR capability in a variety of receivers. NOAA Weather Radio capability is currently available on automobile, aircraft, marine, citizens band, and standard AM/FM radios as well as communications receivers, transceivers, scanners, and cable TV.

By nature and design, NOAA Weather Radio coverage is limited to an area within 40 miles of the transmitter. The quality of reception is dictated by transmitter distance, local terrain, and the quality and location of the receiver. In general, those using a high quality receiver on flat terrain or at sea can expect reliable reception beyond 40 miles. Those with standard receivers, surrounded by large buildings in cities and those in mountain valleys may experience little or no reception at considerably less than 40 miles. If possible, a receiver should be tested in the location where it will be used prior to purchase.

NOAA Weather Radio is directly available to a large portion of the U.S. population. The National Weather Service is currently engaged in a program to increase coverage to at least 95 percent of the population.



If you have a question regarding the technical aspects of NOAA Weather Radio such as transmitter location, reception, and characteristics or if you are interested in becoming a partner with the National Weather Service to identify or provide local funding and/or facilities for the installation of a NOAA Weather Radio transmitter, please contact your local National Weather Service Office or send a letter to:

National Weather Service  
 Attn: Dissemination Systems Branch, W/OPS17  
 1325 East-West Highway  
 Silver Spring, MD 20910

The following is a listing of operational stations by state. For specific coverage information for your local area please visit our website at:

<http://www.weather.gov/nwr/>

**ALABAMA**

Anniston.....	162.475
Arab.....	162.525
Auburn.....	162.525
Birmingham.....	162.550
Brewton.....	162.475
Columbus.....	162.400
Cullman.....	162.450
Demopolis.....	162.475
Dozier.....	162.550
Florence.....	162.475
Greenville.....	162.425
Henagar.....	162.500
Huntsville.....	162.400
Jackson.....	162.500
Louisville.....	162.475
Mobile.....	162.550
Montgomery.....	162.400
Oneonta.....	162.425
Selma.....	162.450
Tuscaloosa.....	162.400
Winfield.....	162.525

**ALASKA**

Althorp Peak.....	162.425
Anchorage.....	162.550
Barrow.....	162.550
Bede Mountain.....	162.450
Bethel.....	162.550
Cape Fanshaw.....	162.425
Cape Gull.....	162.500
Cape Hinchinbrook.....	162.525
Cold Bay.....	162.425
Cordova.....	162.400
Craig.....	162.475
Dillingham.....	162.500
Duke Island.....	162.450
East Point.....	162.500
Fairbanks.....	162.550
Glennallen.....	162.550
Gravina Island.....	162.525
Haines.....	162.400
Homer.....	162.400
Juneau.....	162.550
Ketchikan.....	162.550
Kodiak.....	162.550
Kotzebue.....	162.550
Manleyville.....	162.500
Marmot Island.....	162.500
Mt. McArthur.....	162.525
Mt. Robert Barron.....	162.450
Nenana.....	162.400
Ninilchik.....	162.550
Nome.....	162.550
Pillar Mtn.....	162.525
Point Pigot.....	162.450
Potato Point.....	162.425
Raspberry Island.....	162.425
Rugged Island.....	162.425
Saint Paul Island.....	162.525
Sand Point.....	162.550
Seward.....	162.550
Sitka.....	162.550
Sitkinak Dome.....	162.450
Soldotna.....	162.475

Sukkwan Island.....	162.425
Tuklung Mtn.....	162.425
Unalaska.....	162.550
Valdez.....	162.550
Wasilla.....	162.400
Whittier.....	162.475
Wrangell.....	162.400
Yakutat.....	162.400
Zarembo Island.....	162.450

**AMERICAN SAMOA**

Mt. Olotete.....	162.550
Pago Pago.....	162.400

**ARIZONA**

Flagstaff.....	162.400
Globe.....	162.500
Grand Canyon.....	162.475
Greer.....	162.525
Kingman.....	162.425
Lake Havasu.....	162.400
Nogales.....	162.500
Payson Gila County N.....	162.425
Phoenix.....	162.550
Prescott.....	162.525
Safford.....	162.550
Show Low.....	162.400
Tucson.....	162.400
Window Rock.....	162.550

**ARKANSAS**

Cherokee Village.....	162.475
El Dorado.....	162.525
Fayetteville.....	162.475
Fort Smith.....	162.550
Fountain Hill.....	162.475
Gurdon.....	162.475
Harrison.....	162.525
High Peak.....	162.425
Jonesboro.....	162.550
Little Rock.....	162.550
Marvell.....	162.525
Mena.....	162.400
Morrilton.....	162.475
Mountain View.....	162.450
Russell.....	162.400
Russellville.....	162.525
Springdale.....	162.400
Star City.....	162.400
Yellville.....	162.500

**CALIFORNIA**

Avalon.....	162.525
Bakersfield.....	162.550
Big Rock Ridge.....	162.500
Bishop.....	162.425
Coachella.....	162.400
Coachella / Spanish.....	162.525
Contra Costa County.....	162.425
Conway Summit.....	162.525
El Paso Mtns.....	162.425
Eureka.....	162.400
Fresno.....	162.400
Grass Valley.....	162.400
Horse Mtn.....	162.450
Los Angeles.....	162.550
Malibu Marine.....	162.425
Monterey.....	162.550
Monterey Marine.....	162.450
Point Arena.....	162.550
Redding.....	162.550
Sacramento.....	162.550
San Diego.....	162.400

San Diego Marine.....	162.425
San Francisco.....	162.400
San Luis Obispo.....	162.550
San Simeon.....	162.525
Sandberg.....	162.425
Santa Ana.....	162.450
Santa Barbara.....	162.400
Santa Barbara Marine.....	162.475
Sonoma County.....	162.475
Ukiah.....	162.525
Victorville.....	162.500
Yosemite.....	162.450
Yuma.....	162.550

**COLORADO**

Alamosa.....	162.475
Anton.....	162.450
Bethune.....	162.525
Boyer.....	162.450
Canon City.....	162.500
Colorado Springs.....	162.475
Deer Trail.....	162.500
Denver.....	162.550
Dillon.....	162.400
Durango.....	162.425
Eagle.....	162.450
Fort Collins/Ault.....	162.450
Fort Morgan.....	162.525
Fowler.....	162.425
Franktown.....	162.450
Glenwood Springs.....	162.500
Grand Junction.....	162.550
Greeley.....	162.400
La Junta.....	162.500
Lamar.....	162.525
Mead/Longmont.....	162.475
Montrose.....	162.450
North Cottonwood.....	162.500
Pueblo.....	162.400
Springfield.....	162.400
Steamboat Springs.....	162.525
Sterling.....	162.400
Mena.....	162.450
Wray.....	162.475

**CONNECTICUT**

Cornwall.....	162.500
Hartford.....	162.475
Meriden.....	162.400
New London.....	162.550

**DELAWARE**

Lewes.....	162.550
Salisbury.....	162.475

**DISTRICT OF COLUMBIA**

Washington DC.....	162.450
--------------------	---------

**FLORIDA**

Belle Glade.....	162.400
Daytona Beach.....	162.400
East Point.....	162.500
Fort Myers.....	162.475
Fort Pierce.....	162.425
Gainesville.....	162.475
Hialeah Spanish.....	162.500
Inverness.....	162.400
Jacksonville.....	162.550
Key West.....	162.400
Lake City.....	162.400
Largo.....	162.450
Melbourne.....	162.550
Miami.....	162.550

Morrison.....	162.550
Naples.....	162.525
Ocala.....	162.525
Orlando.....	162.475
Palatka.....	162.425
Panama City.....	162.550
Pensacola.....	162.400
Princeton.....	162.425
Salem.....	162.425
Sebring.....	162.500
Sneads.....	162.425
Sumterville.....	162.500
Tallahassee.....	162.400
Tampa Bay.....	162.550
Tea Table Key.....	162.450
Venice.....	162.400
West Palm Beach.....	162.475
Westville.....	162.450

**GEORGIA**

Americus.....	162.425
Deer Trail.....	162.450
Athens.....	162.400
Atlanta.....	162.550
Augusta.....	162.550
Baxley.....	162.525
Blakely.....	162.525
Blue Ridge.....	162.475
Brasstown Bald.....	162.500
Brunswick.....	162.425
Buchanan.....	162.425
Chatsworth.....	162.400
Clayton.....	162.450
Cleveland.....	162.525
Eastman.....	162.400
Eatonton.....	162.525
Jesup.....	162.450
La Grange.....	162.450
Macon.....	162.475
Metter.....	162.425
Pelham.....	162.550
Sandersville.....	162.450
Summerville.....	162.450
Thomaston.....	162.500
Toccoa.....	162.425
Valdosta.....	162.500
Washington.....	162.500
Waycross.....	162.475
Waynesboro.....	162.425

**GUAM**

Guam.....	162.400
-----------	---------

**HAWAII**

Hawaii Kai.....	162.450
Kauai.....	162.400
Kulani Cone.....	162.550
Maui.....	162.400
North Kohala.....	162.500
Oahu.....	162.550
South Point.....	162.550

**IDAHO**

Boise.....	162.550
Bonnors Ferry.....	162.500
Burley.....	162.475
Driggs.....	162.450
Grangeville.....	162.450
Lewiston.....	162.550
McCall.....	162.475
Orofino.....	162.500
Payette.....	162.400
Pocatello.....	162.550

Salmon.....	162.500
Sedgwick Peak.....	162.425
Sun Valley.....	162.450
Twin Falls.....	162.400

**ILLINOIS**

Bloomington.....	162.525
Champaign.....	162.550
Chester.....	162.450
Chicago.....	162.550
Crescent City.....	162.500
Crystal Lake.....	162.500
DeKalb.....	162.550
Dixon.....	162.525
Freeport.....	162.450
Galesburg.....	162.400
Hillsboro.....	162.425
Jacksonville.....	162.525
Jerseyville.....	162.450
Kankakee.....	162.525
Lockport.....	162.425
Ashburn.....	162.500
Marion.....	162.425
McLeansboro.....	162.400
Newton.....	162.450
Odell.....	162.450
Paris.....	162.525
Peoria.....	162.475
Plano.....	162.400
Princeton.....	162.425
Quad Cities.....	162.550
Rockford.....	162.475
Salem.....	162.475
Shelbyville.....	162.500
Springfield.....	162.400

**INDIANA**

Angola.....	162.425
Bloomington.....	162.450
Edwardsport.....	162.425
Evansville.....	162.550
Fort Wayne.....	162.550
Georgia.....	162.500
Hebron.....	162.450
Indianapolis.....	162.550
Marion.....	162.450
Michigan City.....	162.500
Monticello/Lafayette.....	162.475
Muncie.....	162.425
New Albany.....	162.475
Newport.....	162.425
North Webster.....	162.500
Putnamville.....	162.400
Richmond.....	162.500
Seymour.....	162.525
South Bend.....	162.400

**IOWA**

Burlington.....	162.525
Carroll.....	162.425
Cedar Rapids.....	162.475
Decorah.....	162.525
Delaware.....	162.450
Denison.....	162.550
Des Moines.....	162.550
Essex.....	162.550
Fairfield.....	162.400
Forest City.....	162.500
Fort Dodge.....	162.400
Hancock/Pottawattam.....	162.525
Iowa Falls.....	162.525
Lake Rathbun.....	162.425
Lenox.....	162.450

Maquoketa.....	162.425
Marshalltown.....	162.500
Milford.....	162.550
Montezuma.....	162.450
Ottumwa.....	162.500
Ringsted.....	162.475
Sanborn.....	162.525
Sioux City.....	162.475
St. Ansgar.....	162.450
Storm Lake.....	162.450
Van Wert.....	162.475
Waterloo.....	162.550

**KANSAS**

Abilene.....	162.525
Beaumont.....	162.500
Belvidere.....	162.525
Blue Rapids.....	162.425
Chanute.....	162.400
Concordia.....	162.550
Dighton.....	162.525
Dodge City.....	162.475
Ellsworth.....	162.400
Gem.....	162.400
Great Bend.....	162.500
Halls Summit.....	162.425
Hays.....	162.450
Kirwin.....	162.500
Lenora.....	162.425
Meade.....	162.425
Parker.....	162.525
Saint Joseph.....	162.400
Sharon.....	162.400
Topeka.....	162.475
Tribune.....	162.550
Ullyses.....	162.450
Wichita.....	162.550

**KENTUCKY**

Ashland.....	162.550
Beattyville.....	162.500
Bowling Green.....	162.400
Burkesville.....	162.475
Campbellsville.....	162.525
Covington.....	162.550
East Madison County.....	162.525
Ekron.....	162.450
Elizabethtown.....	162.550
Frankfort.....	162.500
Frenchburg.....	162.475
Harlan.....	162.450
Hazard.....	162.475
Hopkinsville.....	162.450
Horse Cave.....	162.500
Irvine.....	162.475
Jackson.....	162.425
Lexington.....	162.400
London.....	162.475
Madison County.....	162.525
Madisonville.....	162.525
Manchester.....	162.400
Mayfield.....	162.475
Maysville.....	162.425
McKee.....	162.450
Moberly.....	162.525
Monticello.....	162.425
Morehead.....	162.400
Mount Vernon.....	162.425
Owenton.....	162.450
Paintsville.....	162.525
Phelps.....	162.500
Pikeville.....	162.400
Pineville.....	162.525

Somerset.....	162.550
Stanton.....	162.550
West Liberty.....	162.450
West Madison County.....	162.525
Whitesville.....	162.475
Williamsburg.....	162.500

**LOUISIANA**

Alexandria.....	162.475
Baton Rouge.....	162.400
Bogalusa.....	162.525
Buras.....	162.475
Lafayette.....	162.550
Lake Charles.....	162.400
Monroe.....	162.550
Morgan City.....	