

*The Oyster Perpetual*  
EXPLORER II



*Oyster, 42 mm, steel*  
**EXPLORER II**

Extreme environments, such as the polar regions, have always been real-life proving grounds for Oyster watches. The Explorer II is natural heir to the Explorer as a reliable guide, a tool and a companion for explorers, speleologists and vulcanologists. When it was launched in 1971, the Explorer II set new standards for chronometric precision, strength, autonomy and clarity. It features a distinctive 24-hour hand, an invaluable aid to distinguish daytime hours from night around the poles and beneath ground.



## Reference

216570

### MODEL CASE

---

#### MODEL CASE

Oyster, 42 mm, steel

#### OYSTER ARCHITECTURE

Monobloc middle case, screw-down case back and winding crown

#### DIAMETER

42 mm

#### MATERIAL

904L steel

#### BEZEL

Fixed, 24-hour graduated

#### WINDING CROWN

Screw-down, Twinlock double waterproofness system

#### CRYSTAL

Scratch-resistant sapphire, Cyclops lens over the date

#### WATER-RESISTANCE

Waterproof to 100 metres / 330 feet

### MOVEMENT

---

#### MOVEMENT

Perpetual, mechanical, self-winding, 24-hour hand

#### CALIBRE

3187, Manufacture Rolex

#### FUNCTIONS

Centre hour, minute and seconds hands. 24-hour display. Second time zone with independent rapid-setting of the hour hand. Instantaneous date. Stop-seconds for precise time setting

#### PRECISION

Officially certified Swiss chronometer (COSC)

#### OSCILLATOR

Paramagnetic blue Parachrom hairspring. High-performance Paraflex shock absorbers

#### WINDING

Bidirectional self-winding via Perpetual rotor

### BRACELET

---

#### BRACELET

Oyster, flat three-piece links

#### BRACELET MATERIAL

904L steel

#### CLASP

Folding Oysterlock safety clasp with Easylink 5 mm comfort extension link

### DIAL

---

#### DIAL

White

#### DETAILS

Highly legible Chromalight display with long-lasting blue luminescence

## *History of the Explorer II*

# THE 1971 EXPLORER II

The Rolex Explorer II, first released in 1971, is the natural heir to the original Rolex Explorer – yet with a character all of its own. A robust, highly refined tool, the Explorer II swiftly became the watch of choice of speleologists, volcanologists and polar and jungle explorers, thanks to its specially designed features.





### *The new Explorer II*

## FOUR DECADES OF ADVENTURE

For its 40th anniversary in 2011, the Explorer II received an extensive technical and aesthetic makeover. The most obvious innovation is the size of the case, increased from 40 mm to 42 mm in diameter, opening up the dial for better legibility. The hands have also been enlarged, enhancing their visibility. But the signature feature of this new version is its larger, orange 24-hour hand ending in an arrow, mirroring the original Explorer II of 1971.



*Spirit of the Explorer II*

## A COMPANION IN EXTREME CONDITIONS

The call to adventure is often driven by a determination to contribute knowledge culled from regions where few are brave or intrepid enough to venture. Rolex continues to be a key part of these expeditions, working side by side with those whose life's passion takes them from fundraising galas to snow-pelted tents.

Tough and yet elegant, the Rolex Explorer II is a guide, a tool and a companion that opens doors to the imagination by accompanying its wearer on even the most challenging expeditions.



### *Function*

## 24-HOUR BEZEL



The Explorer II is equipped with an additional 24-hour display; a dedicated hand circles the dial in 24 hours rather than the usual 12, pointing to a fixed bezel with 24 hour graduations.

This function enables the wearer to distinguish the hours of the day from the hours of the night, an essential feature for those who venture into environments where darkness reigns supreme – such as in the depths of caves, or where the sun never sets – like the polar regions in summer.

*Spirit of the Explorer II*

## GLOBAL ADVENTURERS

An independent 12-hour hand, which provides a second time zone function in conjunction with the fixed or “home” 24-hour display, and an integrated Cyclops lens that magnifies the date display, are other functions that make the Explorer II highly appreciated by global adventurers.







### *Features*

## TWINLOCK WINDING CROWN

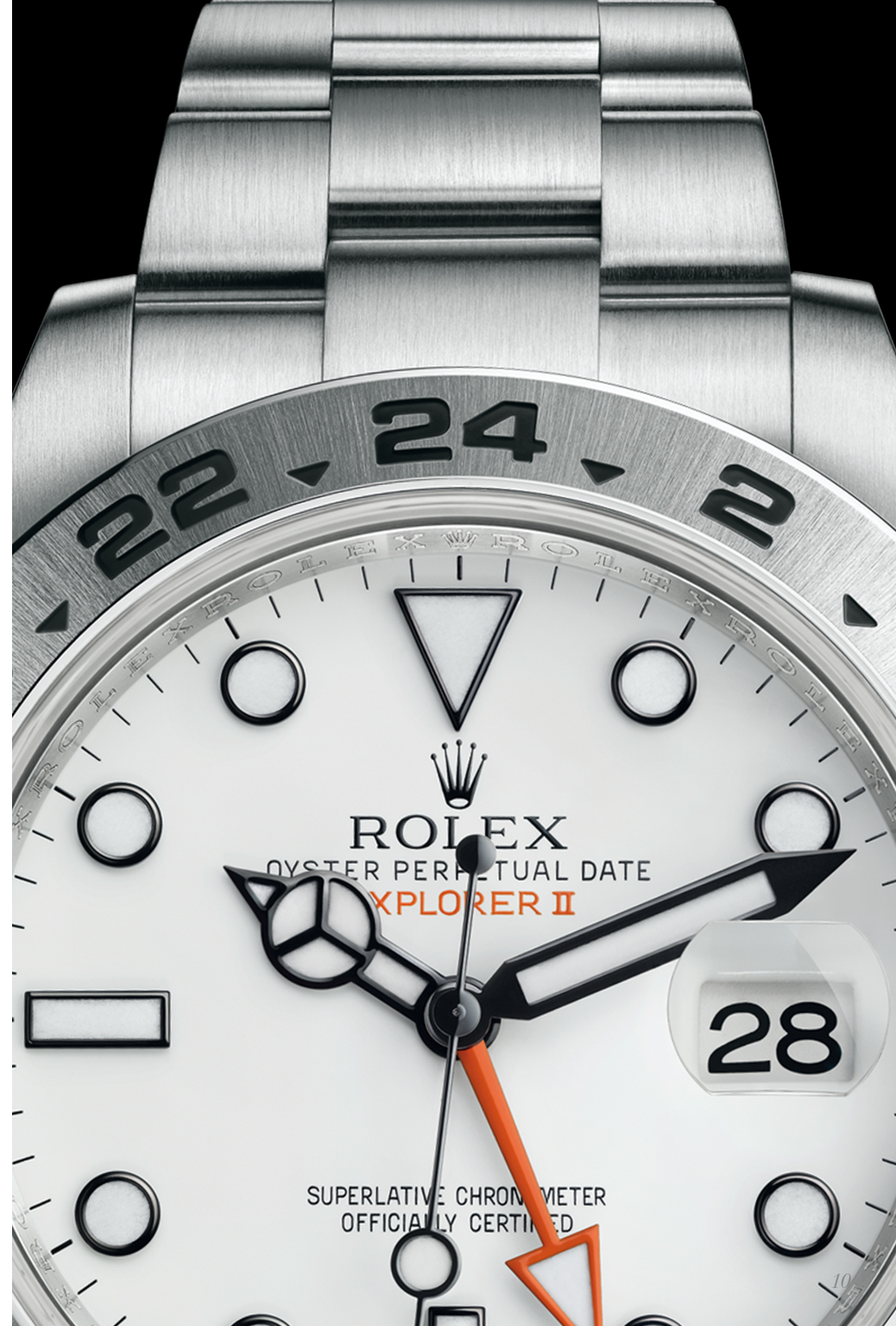
The Twinlock system guarantees that the screw-down winding crown is perfectly water-resistant thanks to two sealed zones, one inside the tube, the other inside the crown. This principle is used on all the watches in the Oyster collection that are guaranteed waterproof to 100 metres (330 feet).

To protect the winding crown – the only external mobile element of the watch – the case of the Explorer II is machined with an integral crown guard.

*Features*

## LEGENDARY LEGIBILITY

A scratch-proof sapphire crystal, a clear dial and special luminescent markings allow the rugged Rolex Explorer II to be read even in the most challenging conditions.

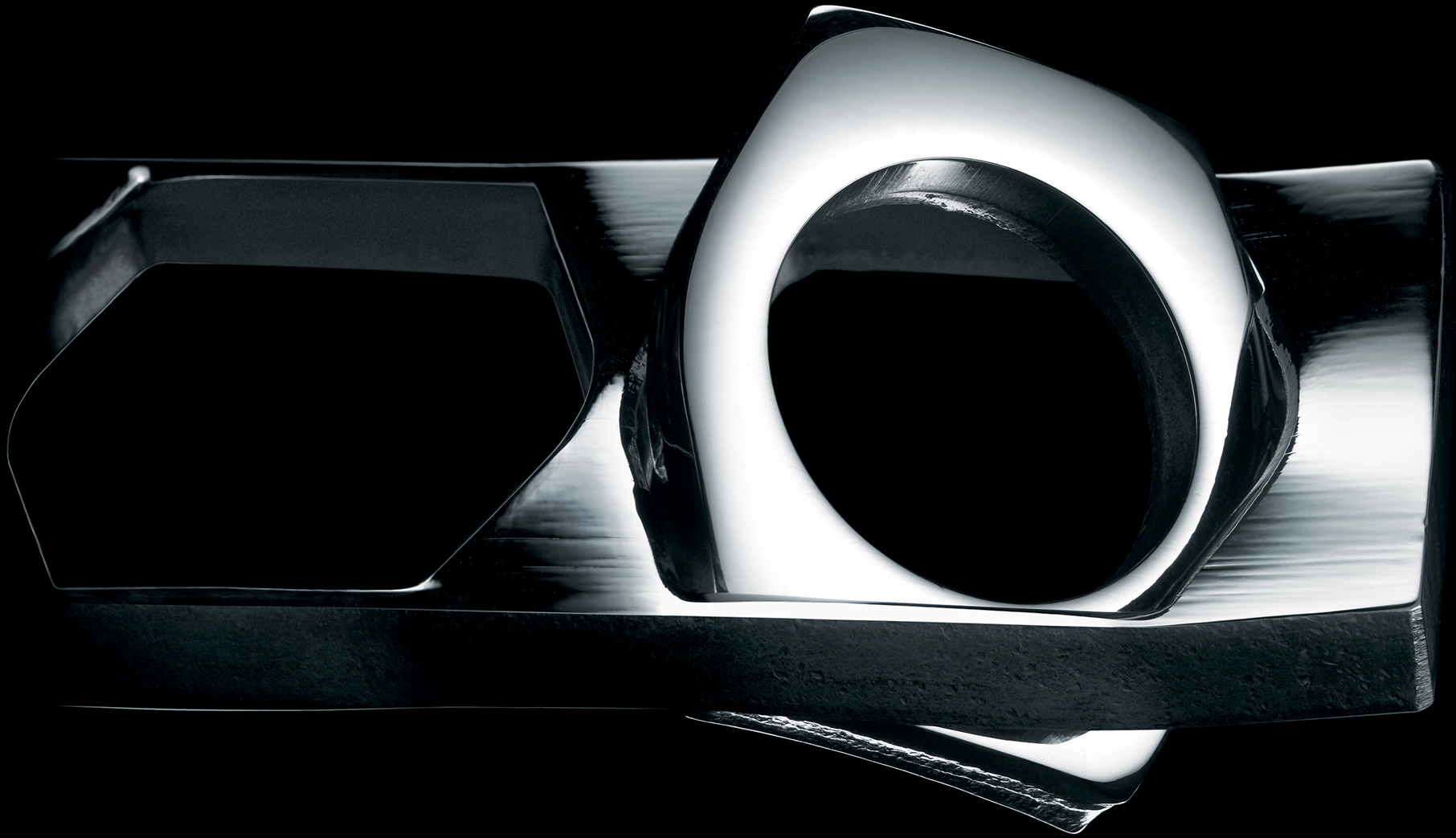




### *Function*

## NIGHT AND DAY

The high-contrast Chromalight display on the dial innovates by pushing the boundaries of visibility in dark environments. The blue glow of the hour markers and hands lasts up to eight hours with a uniform luminosity throughout, practically twice as long as that of standard luminescent materials.





### *Features*

## OYSTER BRACELET

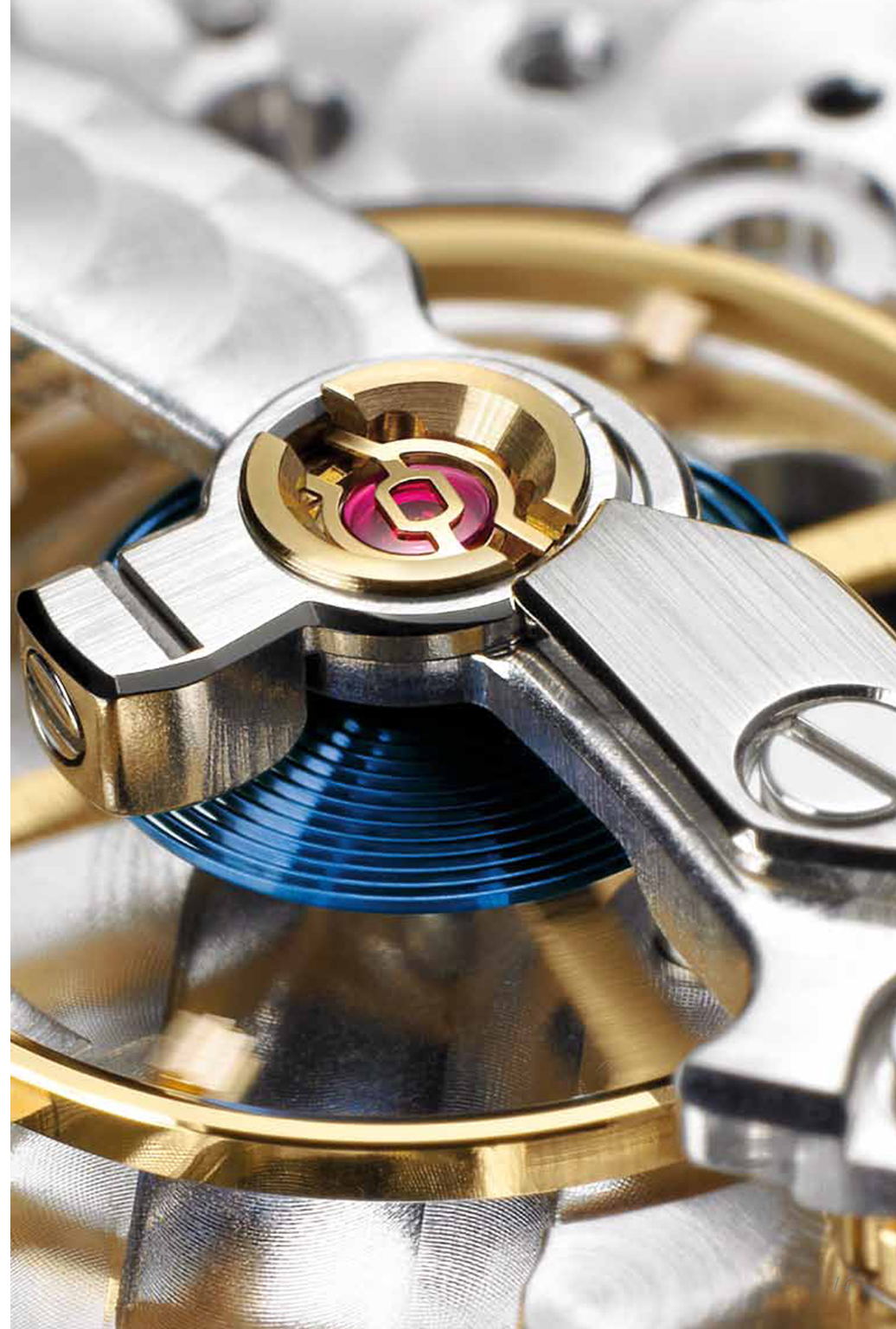
The Oyster bracelet is a perfect alchemy of form and function, aesthetics and technology, designed to be both robust and comfortable. It is equipped with an Oysterlock folding clasp, which prevents accidental opening, and the Easylink comfort extension link, also exclusive to Rolex. This ingenious system allows the wearer to increase the bracelet length by approximately 5 mm, providing additional comfort in any situation.

## *Features*

# PARAFLEX



To increase the resistance of its movements to shocks – especially if the watch is dropped – Rolex developed Paraflex, a highly efficient shock absorber designed to protect sensitive components of the movement, notably the staff of the balance wheel. Paraflex shock absorbers increase shock resistance by up to 50 per cent.





## *Features*

# 3187 MOVEMENT

The Explorer II is equipped with calibre 3187, a self-winding mechanical movement entirely developed and manufactured by Rolex. In addition to the conventional hour, minute and seconds hands, it features a 24-hour hand to display a second time zone. The 3187 is fitted with a Parachrom hairspring and Paraflex shock absorbers, offering greater resistance to shocks and to extreme conditions.

Like all Rolex Perpetual movements, the 3187 is a certified Swiss chronometer, a designation reserved for high-precision watches that have successfully passed the Swiss Official Chronometer Testing Institute (COSC) tests. Its architecture, in common with all Oyster watch movements, makes it singularly reliable.



*Spirit of the Explorer II*

## THE WORLD AS A LABORATORY

The Explorer symbolises the privileged relationship that has always bound Rolex and exploration. Since the late 1920s, Rolex has been using the world as a laboratory to prove its watches under real-life conditions. This pioneering spirit prompted the company to equip numerous Himalayan expeditions, whose observations in the harshest environments have had a direct impact on the development of Oyster watches and the quest for greater precision, robustness and reliability.





*Spirit of the Explorer II*

## BECAUSE IT'S THERE

Mountaineer George Mallory was asked:

"Why do you climb Mount Everest?"

He replied simply: "BECAUSE IT'S THERE"

*Expedition Watches*

## CONQUERING EVEREST



On 29 May 1953, two men fired with extraordinary determination were the first to reach Mount Everest's 8,848-metre summit. Sir Edmund Hillary and Tenzing Norgay, members of a British expedition led by Sir John Hunt, achieved the goal that dozens of other earlier expeditions had tried to reach: to stand on the top of the world.





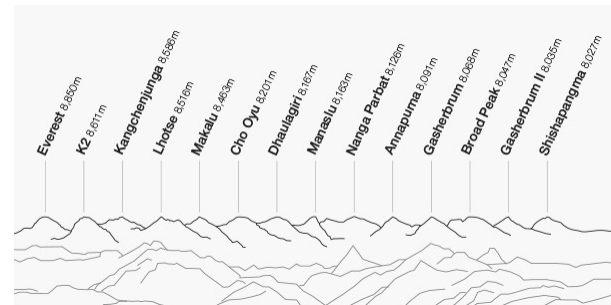
*Ed Viesturs*

REACHING THE SUMMIT IS OPTIONAL.  
GETTING DOWN IS MANDATORY.



## *Ed Viesturs*

# 14 X 8000



Ed Viesturs is the USA's leading high altitude mountaineer, and has climbed many of the world's most challenging summits, including ascending Mount Everest seven times. In 2005, he completed an 18-year project christened Endeavor 8000 to reach the summits of the 14 highest mountains in the world – all those whose summits exceed 8,000 metres or 26,240 feet.

And Viesturs climbed all 14 without using supplemental oxygen. For Ed Viesturs, the key to keeping going is to break up the climb into tiny stages.

*Jean Troillet*

## ALPINE STYLE

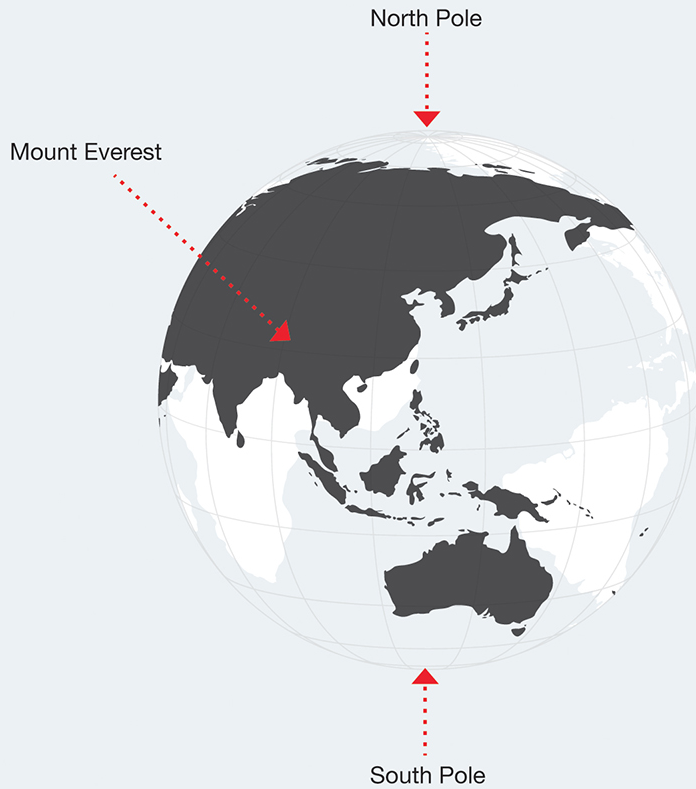
Swiss-Canadian climber and sailor Jean Troillet obtained his qualifications as a mountain guide in 1969. He has climbed 10 8,000-metre peaks, all in alpine style and without oxygen. He embodies that common characteristic of all explorers: perseverance. Troillet can no longer keep track of the expeditions in which he had to turn back in the face of danger and abandon a challenge. “At least 10 times,” he says, “maybe a dozen.” But he has always gone back: the mountain will still be there.



An aerial photograph of a dry, cracked riverbed in a desert landscape. The riverbed is a dark, winding path through a light-colored, cracked earth. The cracks are deep and jagged, forming a complex network of lines. The overall color palette is a range of blues and greys, from light to dark. The text is overlaid in the center of the image.

*“ Psychological preparation  
is extremely important. ”*

JEAN TROILLET



*Erling Kagge*

## THE THREE POLES

Before the age of 32, Norwegian adventurer Erling Kagge had sailed across the Atlantic alone twice, sailed to Antarctica and back, become one of the first two men to travel to the North Pole (with Børge Ousland) without outside assistance, reached the South Pole alone and unsupported (also a first), and climbed Mount Everest.

He became the first person in history to reach the “Three Extremes” – the two poles and the highest mountaintop.

*Rune Gjeldnes*

## THE LONGEST MARCH

Norwegian adventurer Rune Gjeldnes became in 2006 the first and only person in the world to succeed in crossing the three big ice sheets – Greenland, the Arctic Ocean and Antarctica – unsupported. In November 2005, Gjeldnes started on “The Longest March”, a three-month, 4,800 km solo ski trek across the South Pole which he completed in February 2006. He now holds the records of the longest ski journey without resupply and the longest ski journey generally.





### *Features*

## SUPERLATIVE CHRONOMETER

The green seal accompanying every Rolex watch is a symbol of its status as a Superlative Chronometer. This exclusive designation attests that it has successfully undergone a series of specific final controls by Rolex in its own laboratories according to its own criteria, in addition to the official COSC certification of its movement. This unique testing of the chronometric precision of the cased-up movement, as well as of the watch's waterproofness, self-winding and power reserve, pushes back the boundaries of performance and makes Rolex the benchmark for excellence in mechanical watches. The green seal is coupled with a five-year guarantee which applies to all Rolex models.





*Where to buy a Rolex*

## THE OFFICIAL ROLEX RETAILER

Only official Rolex retailers, distinguishable by this official green plaque, are allowed to sell and maintain a Rolex. With the necessary skills, technical know-how and special equipment, they guarantee the authenticity of each and every part of your Rolex, not to mention its reliability over time, helping you make the choice that will last a lifetime.



*Find your retailer on [rolex.com](https://www.rolex.com)*



EXPLORE AND DISCOVER MORE ON [ROLEX.COM](https://www.rolex.com)

All intellectual property rights such as trademarks, service marks, trade names, designs and copyrights are reserved. Nothing contained in this website may be reproduced without written permission. Rolex reserves the right at all times to modify the models featured in the present website.