

**First Floor Plan - Option B**

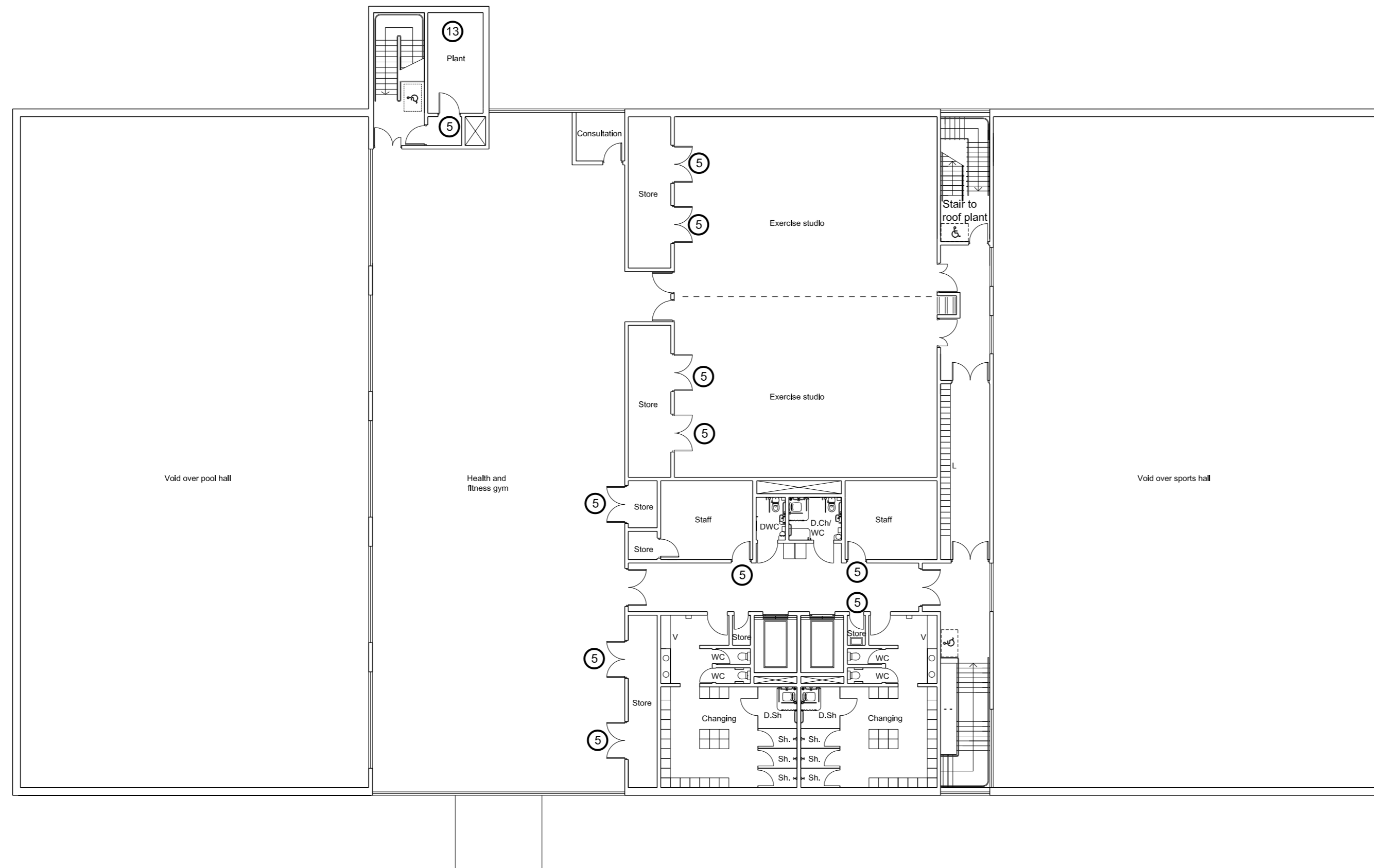
**Scale: 1:200 @ A2**

Notes:  
This drawing is developed from Sport England's publication Affordable Sports Centres with Community 25m Pool Options and must be read in conjunction with the document.

DO NOT SCALE FROM THIS DRAWING

[Click here for 'Design and Cost Guidance'](#)

[Click here for 'User Guide'](#)

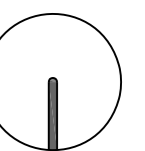


**KEY**

- ① Automatic doors
- ② Vending machines
- ③ Area of low level counter
- ④ Buggy park
- ⑤ Staff only door
- ⑥ Roof lights
- ⑦ Wheel chair storage
- ⑧ High level windows
- ⑨ Aluminium curtain walling
- ⑩ Balance tank under
- ⑪ Extent of pool surround to meet BSEN 15288 Part 1
- ⑫ Swimmer seating
- ⑬ Plant equipment
- ⑭ Removable section of floor
- ⑮ External louvre panels
- ⑯ Steps between plant levels

**ABBREVIATIONS**

- WC Unisex WC
- FWC Female WC
- MWC Male WC
- DWC Unisex accessible WC 2.2 X 1.5m
- A/F/Gr Accessible / family / group changing cubicle minimum 2.0 X 2.6m
- Dis. ch 1 Unisex accessible changing place facility with WC and shower 2.5 X 2.4
- Dis. ch 2 Unisex accessible changing place facility with WC and shower 4.0 X 3.0
- Cl. St Cleaners store
- B ch Baby changing facility
- Sh #p Showers for # no. of people
- S / D Single / Double changing cubicle
- AC Access control turnstile
- V Vanity
- W Wheelchair / buggy storage
- L Lockers
- Gr Group Changing



North

0 5 10m