

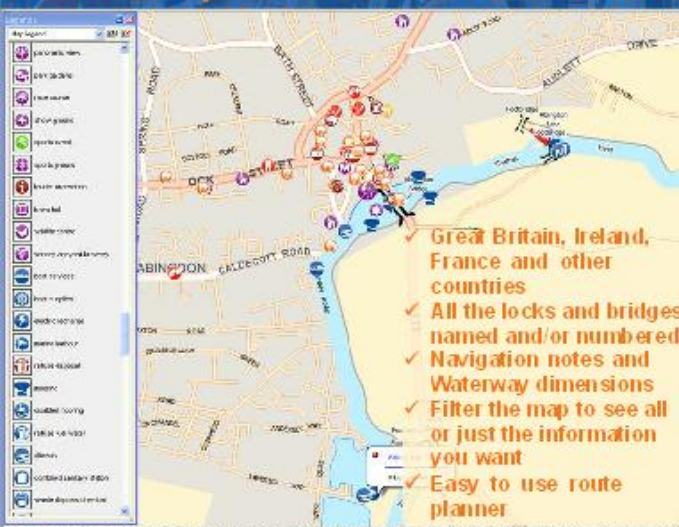
WATER-WAY

AN ESSENTIAL BOATING COMPANION

Use with your desktop, laptop or netbook PC


- Plan your route
- Pin-point your exact location using a GPS
- Find thousands of continually updated points of interest, including:
 - ✓ places to eat and drink
 - ✓ pump-outs, diesel, gas and stoppages
 - ✓ doctors, vets and dentists
 - ✓ shops, laundrettes and Internet points
 - ✓ museums, cinemas and attractions

No need for permanent Internet connection!



Covers the whole of Great Britain and incorporates the **complete** content from **all** of the **NICHOLSON** Guides to the Waterways



As used throughout the UK by

 Scan the QR code for our details or visit.....

Watch a full demo on www.eureauweb.com

Welcome

Mike Kelly
 e-canal Ltd

RYA e-canal IW Training Conference 2013

e-canal mapp

AN ESSENTIAL BOATING COMPANION

Use with your iPad or Smartphone



- regional cruising guides and maps covering all of GB
- no need for permanent Internet
- location-based, with GPS



- thousands of points of interest:
 - ✓ diesel, gas, pump-outs
 - ✓ places to eat and drink
 - ✓ doctors, vets, dentists
 - ✓ shops, laundrettes, libraries
 - ✓ internet access points
 - ✓ museums, cinemas, attractions.... and many, many more



Available from iTunes App Store and Google Play

Scan the QR for our details or visit.....

www.e-canalmapp.co



WATER-WAY

THE ESSENTIAL BOATING COMPANION

GeoConcept Enterprise - [GB Map Master]

File Edit Appearance Objects Data Topology Geocoding GPS Routing SmartLabel Windows ?

0 50 km 1/2,000,000

GPS: Not Connected. Settings

Form [U/1]

The Red Lion

52 Main Street
Crick
Northamptonshire
NN9 7TX
Tel: 01788 822342
Mobile:
Fax:

Email:
Web site:
Accessibility:

Description
Real ale dispensed in a cosy, unadorned pub with low ceilings and coal fires. Excellent home-cooked meals served with fresh vegetables L and E (not Sun E).

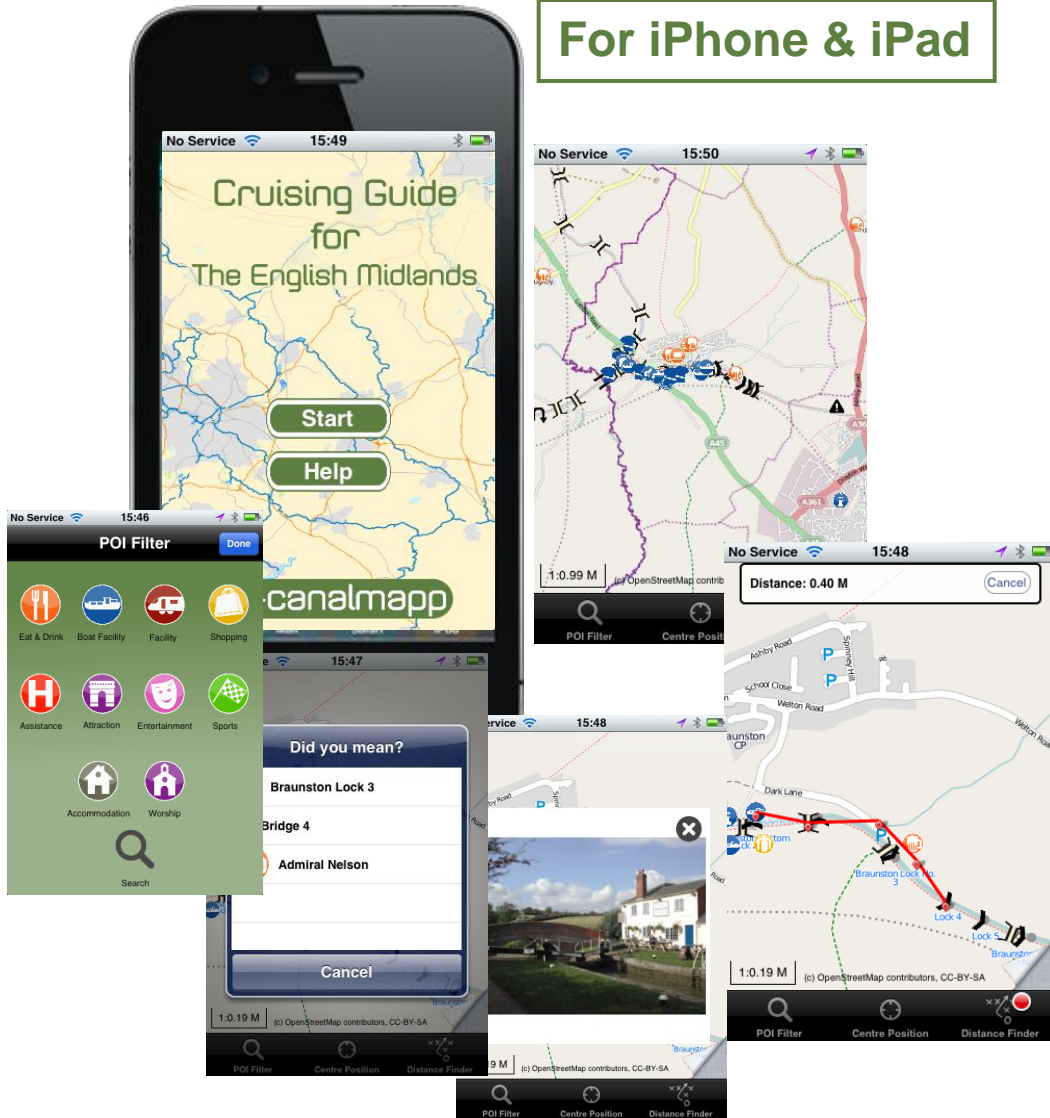
Facilities
Children lunchtime only. Dogs welcome. Patio seating.

Prices **Opening times** **Specials**

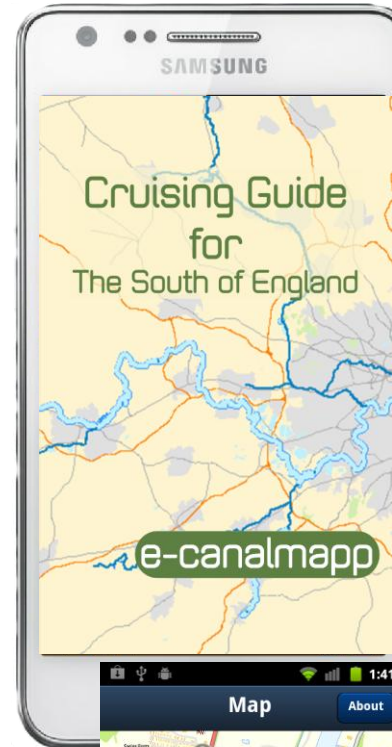
Nicholson Waterway Guides © Collins Bartholomew Ltd 2009

Validate Cancel

For iPhone & iPad



For Android



Which? The Boathouse

The Boathouse

London Road
Braunston
Northamptonshire
NN11 7HB

Telephone:
[01788 891734](tel:01788891734)

'Two for One' on all main courses.
Canalside garden with children's play area. Free WiFi. Overnight mooring for patrons.
0.5 km / 0.3 miles



10 Regional maps covering the whole of Great Britain

The North West

The North East

... and Scotland, to follow later

West of Canals

Midlands

East Of

Norfolk Broads

West Of England

Grand Ring

South of England

E-canalmap on the market

- ❖ iOS (iPhone/iPod Touch/iPad)
 - Available from AppStore/iTunes
- ❖ Compatible Android devices (phones and tablets)
 - Available from Google Play or directly from e-canal
- ❖ Water-Way customers and RCR Members get one free region each!

Perfect mApps for...

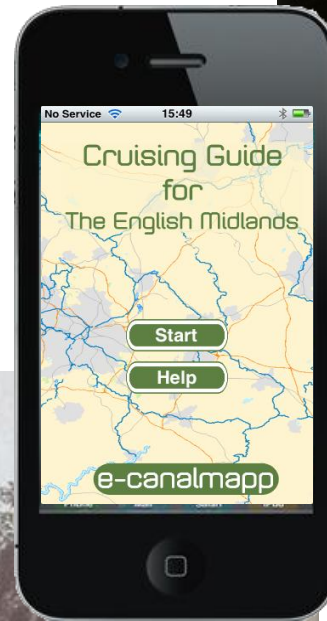
- ❖ Leisure - such as boaters, walkers, cyclists
- ❖ Business – such as marinas, hire operators, pubs, B&Bs, places of interest

Spreading the word

- ❖ Our e-canalmapps are now selling steadily
- ❖ The 2000 mile 'towpath telegraph' is already helping us to make everyone aware of them
- ❖ We are offering all today's delegates a
free e-canalmap region of your choice!
- ❖ ...the catch?
 - just that you will tell the boaters you train about our products and hand out our flyers

e-canal – linking past and present

From the first
'information super-highway' ...



...to the latest!

**Visit us on the exhibition
stand for a chat and
demonstration**

www.e-canalmap.co

**Scan the QR code to
keep our details**

