

Raymarine®



**RYA Yachtmaster Instructor Conference**  
**2014**



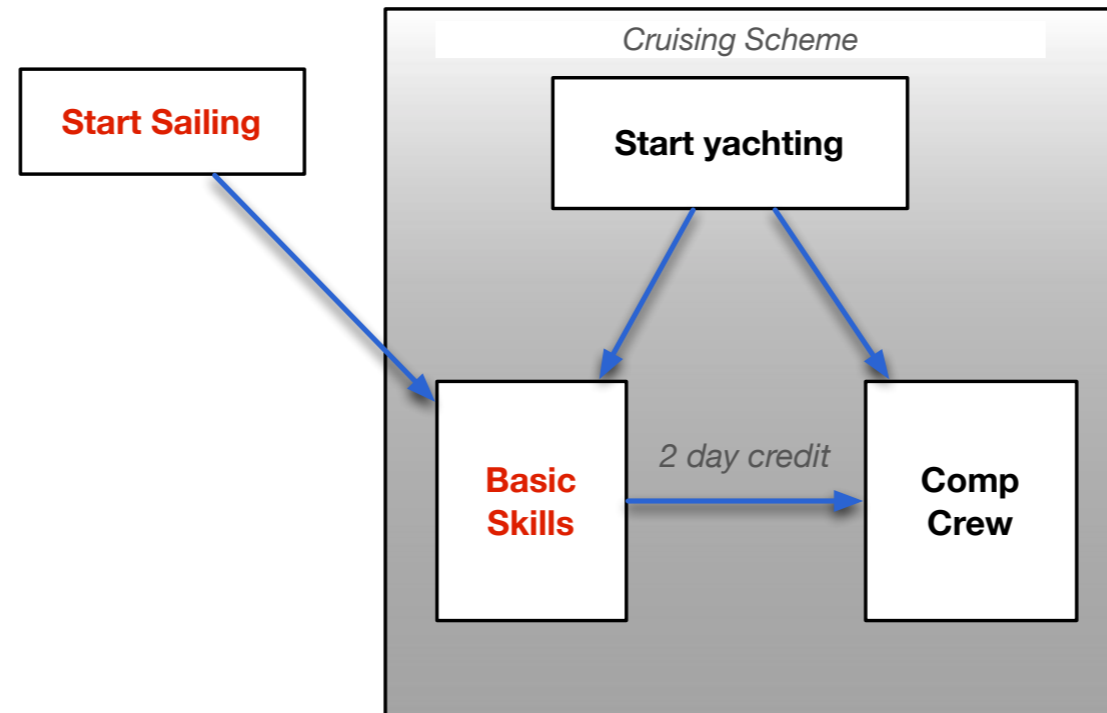
RYA Training



@rya\_training



## New 2 Day Sail Cruising Courses



Two new Stand alone to day courses are available within the sail Cruising Scheme

Cant be run alongside any other courses

The man focus is getting off the pontoon putting the sails up and going sailing

Can be delivered by an RTC with Sail cruising recognition

Instructed by

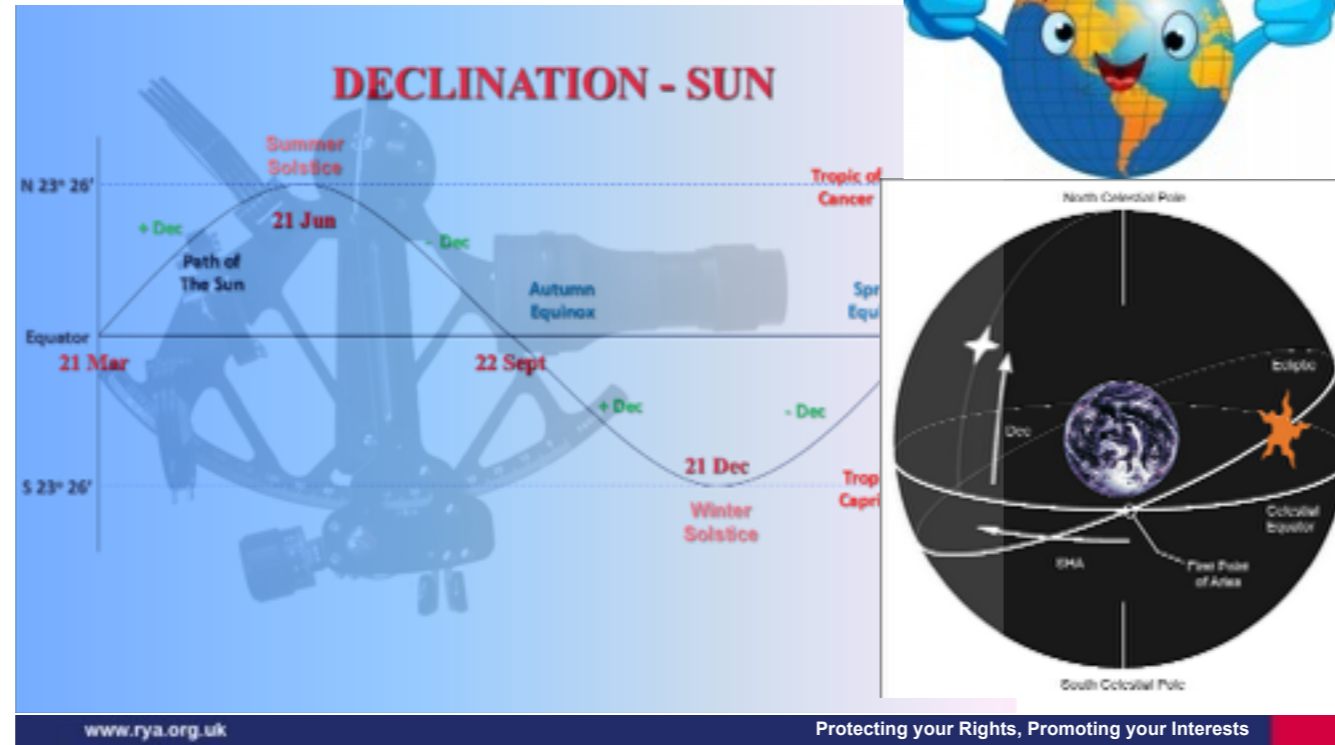
CIS

YMIS

Keelboat instructor with a commercially endorsed YMC or YMOS



# Yachtmaster Ocean Course notes



The course notes have been written and are going through the checking process at the moment



## SRC (Short Range Certificate) Options



- Tuition
  1. 10 hours of classroom tuition
  2. The 10 hours can be up to 3 Hours homework followed by 7 hrs classroom
  3. An on line course, created by us, delivered and sold by you.
- Followed by an exam in a classroom.

Two methods of tuition

RTC's can deliver which ever method of the two they like

the hours of homework must be planned and specific areas of study nominated

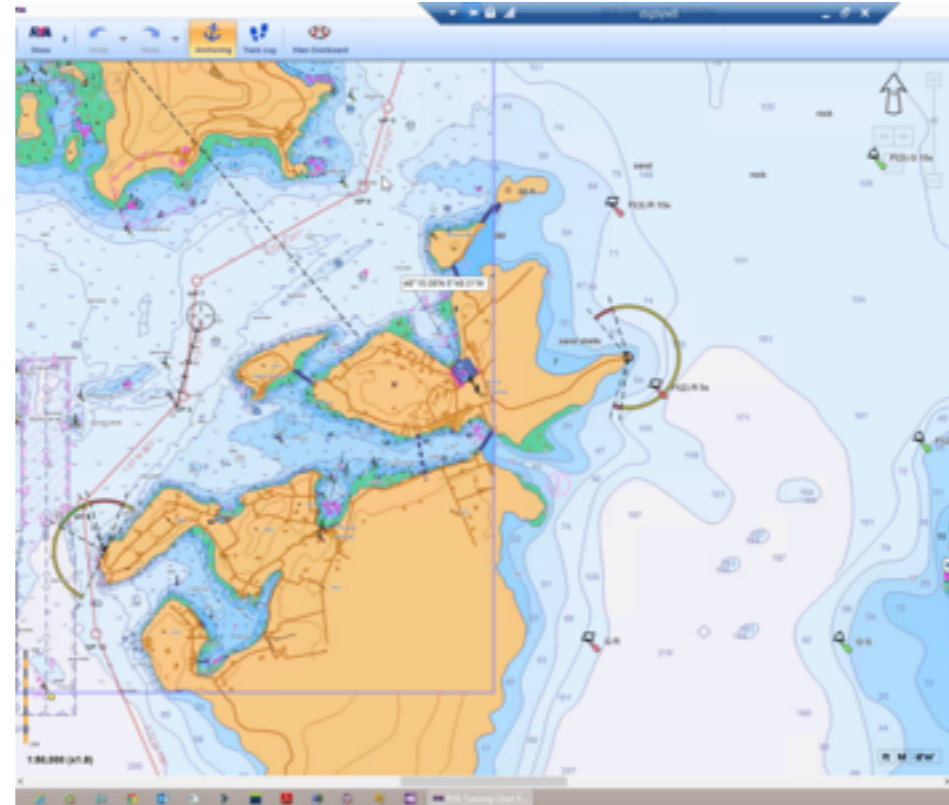
Exam to be conducted by ann SRC assessor not involved in the tuition



## Remember to Register



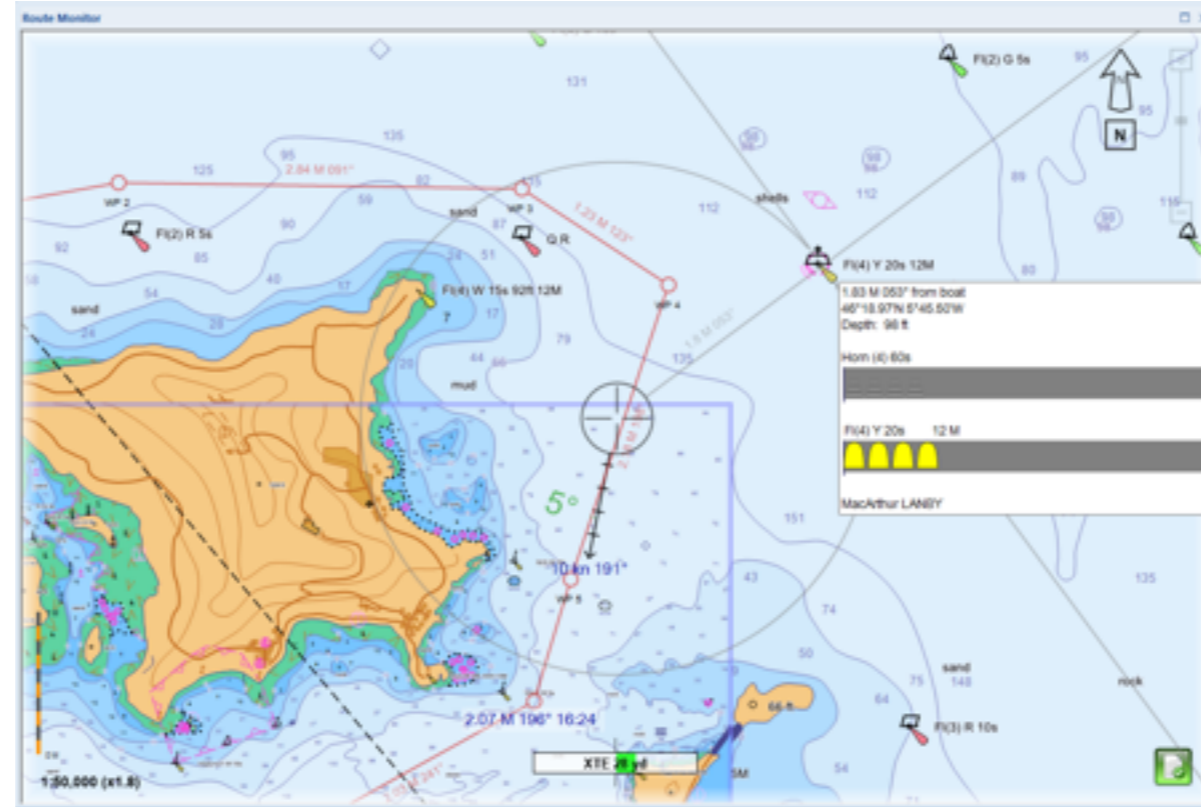
It is part of the recognition process that certificates need to be registered please ensure they are



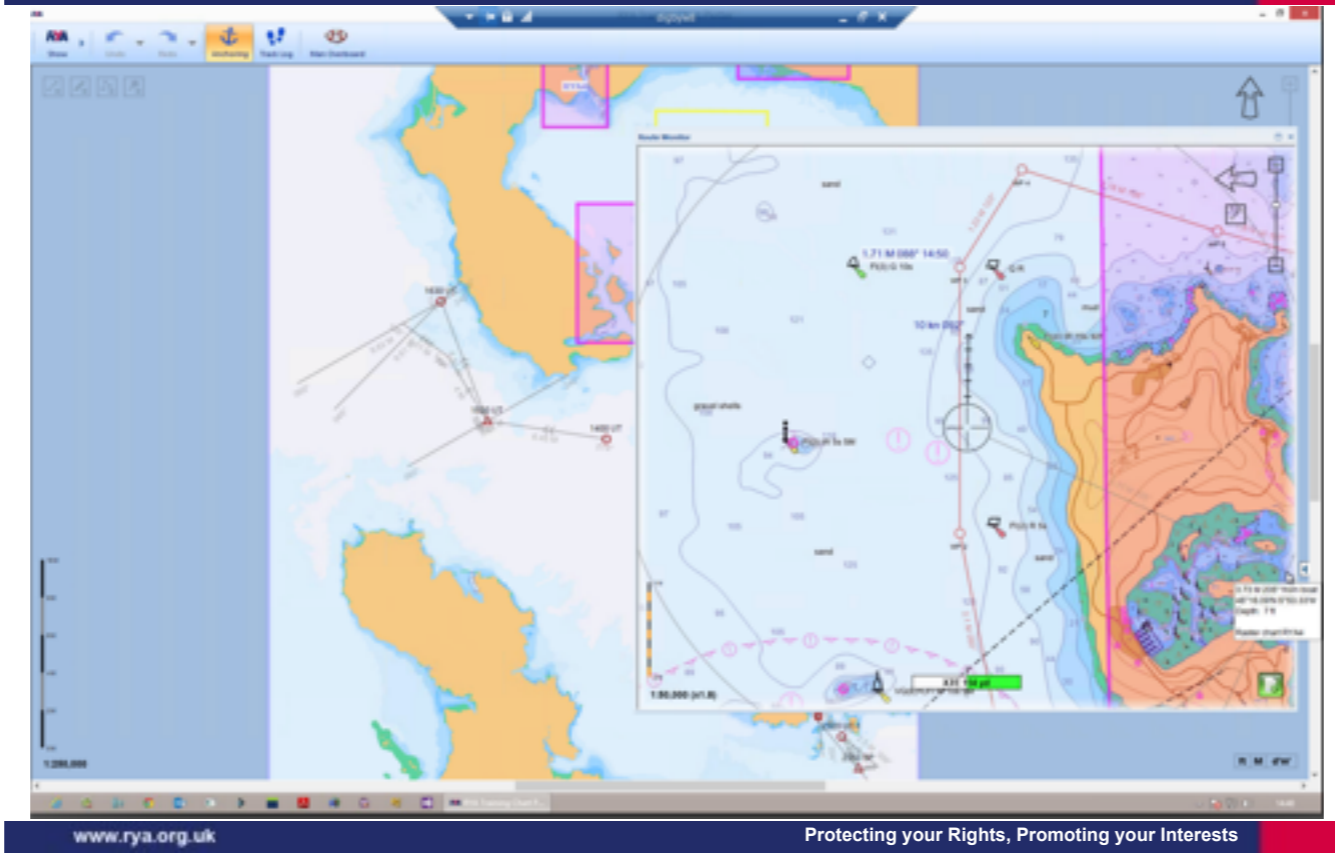
We are working with Chersoft to create a new training plotter

Screen grab above





Training Chart plotter screen grab

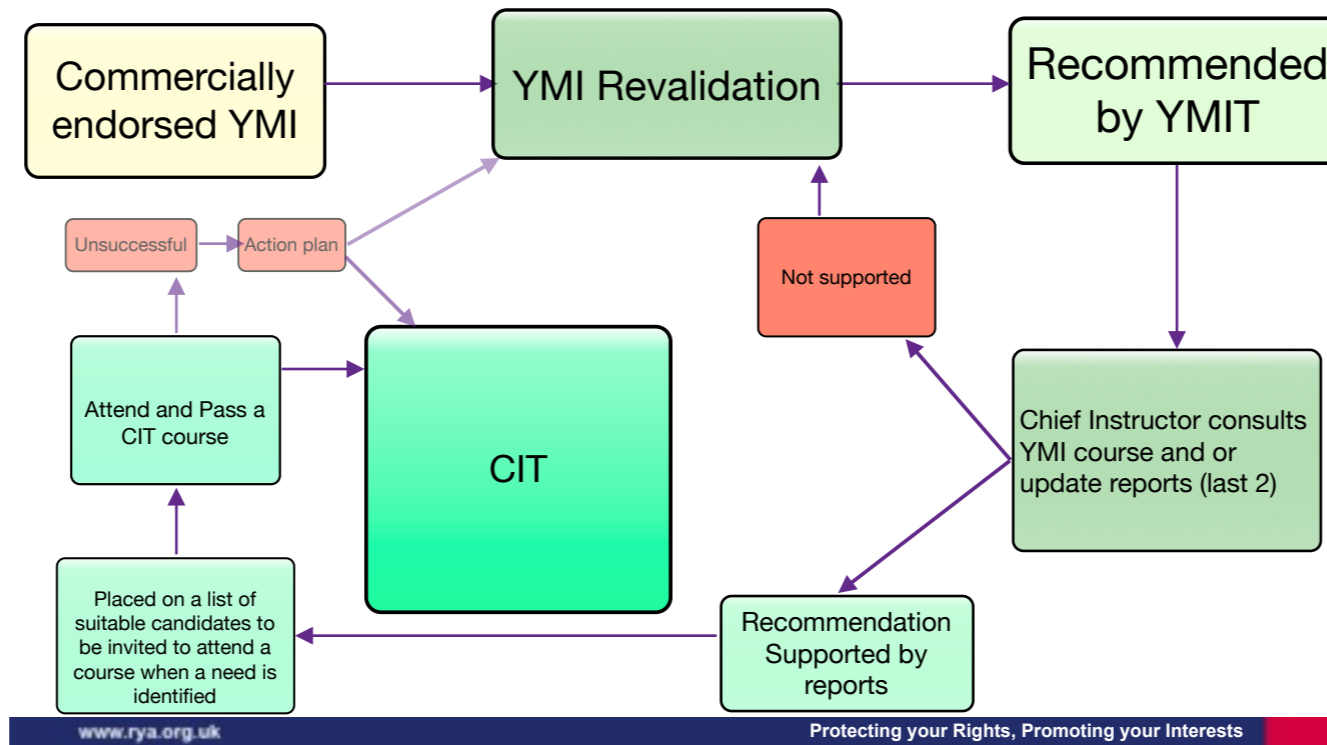


Training Chart plotter screen grab





## Route to Cruising Instructor Trainer (CIT)



The route to becoming a Cruising Instructor trainer (route to becoming an Examiner is the same)

The intention is not to have a huge quantity of Cruising Instructor trainers, they need to be current and of a suitably high standard

Assessment Criteria

Sailing ability (Sail Only)- Motoring ability - Theory Knowledge - Observation skills - Instructional ability

Debriefing skills - A suitable ambassador for the RYA



## Cruising Instructor courses

- Trainer and moderator - CIT or YMIT
- Correct RTC recognition
- Max 4 candidates per boat
  
- Permission to run

Any RTC can run a CI Course permission to run is via the interactive website.



### Returning to this web site?

Login here using your username and password  
(Cookies must be enabled in your browser) ?

 Your session has timed out. Please login again.

Username

Password

Login

Remember username

[Forgotten your username or password?](#)

---








Some courses may allow guest access

Login as a guest

Login as guest

Welcome to RYA Interactive. Any courses that you are currently enrolled on should appear in 'My Courses' below. Simply click your course to get started. Other courses that you might like to take are shown in the 'Other Courses' section. Please let us know if you want to sign up.

#### Other Courses

-  [Help](#)
-  [CEVNI test information](#)
-  [PPR course information](#)
-  [Essential Navigation and Seamanship taster course](#)
-  [Apply to run a Cruising Instructor course](#)
-  [Apply for a Racing Coach Level 3 course](#)
-  [Apply for a Racing Coach Level 2 course](#)

Apply to run CI course



## Apply to run a Cruising Instructor course

### Course criteria

To offer Cruising Instructor training, your centre must be currently recognised for either sail or motor cruising courses, as appropriate.

You must also nominate a trainer and a moderator, both of whom need to be either a current RYA Cruising Instructor Trainer or Yachtmaster Instructor Trainer for either sail or power as appropriate.


The maximum number of students per boat is 4.

### Submit course details for approval

If you fulfil the criteria above and have a course planned, please submit the details for approval below.

Once submitted, your course details will be checked by one of our Chief Instructors. Approval will be confirmed by email to the address entered in the form below. Courses that have not been approved must not be run.

Please allow 3 working days for course details to be reviewed and approval sent.

 [Submit a course for approval](#)

Read the info then submit course for approval

**Submit a course for approval**

\*1 Your name

\*2 Training centre

\*3 Your position at the training centre  
Choose... ▼

\*4 Your email address

\*5 Training centre account number

\*6 Type of course  
Choose... ▼

\*7 Course start date  
Use the day/month/year format, e.g. for March 14th, 1945: 14/3/1945

\*8 Course venue

www.rya.org.uk

Interests

Length of CI course 4 Day power 5 days sail including the moderation day

Once the checks have been done that you are an RTC able to run the course and the trainer and Moderators are CIT's then it will be advertised on our website via google calendar





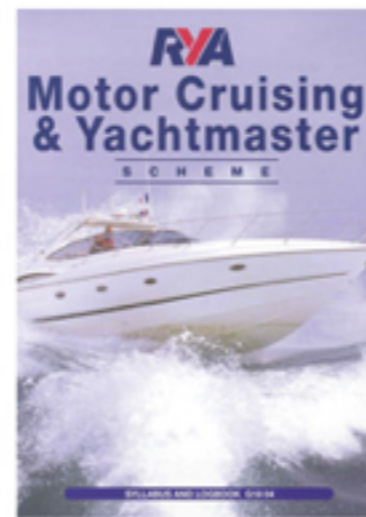
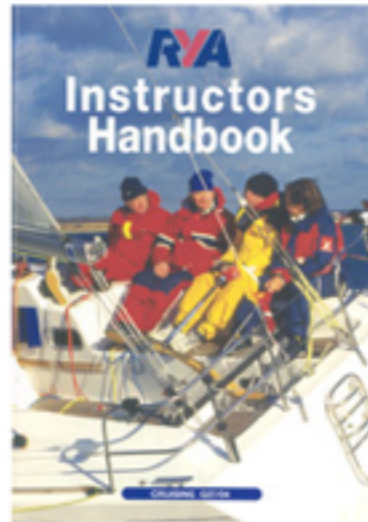
## Pre-Cruising Instructor course online theory paper

- Quiz
- Presentation

By April

Add cruising instructor training to your existing interactive rec for free

New interactive rec £108 + VAT annual hosting fee



Cruising scheme Instructor handbook work continues

Joint cruising scheme logbook by next year, including all new courses



New courses Start and Advanced, no longer piloting

Video for Start, emphasising family learning

Articles in RYA mag and others promoting new courses

# **RYA** TIME TO THINK... SAFETY

Wearing a kill cord can prevent serious injury or death. Display these stickers on your boat, console or outboard to remind the helm to always wear a kill cord.



Produced by Multimedia Marketing 01243 386640 2013/08

Small, open powerboats should be fitted with a kill cord, which if used correctly, will stop the engine if the driver becomes dislodged from the helm position.

Clip on, cast off...  
For more information visit:  
[www.rya.org.uk/go/killcord](http://www.rya.org.uk/go/killcord)

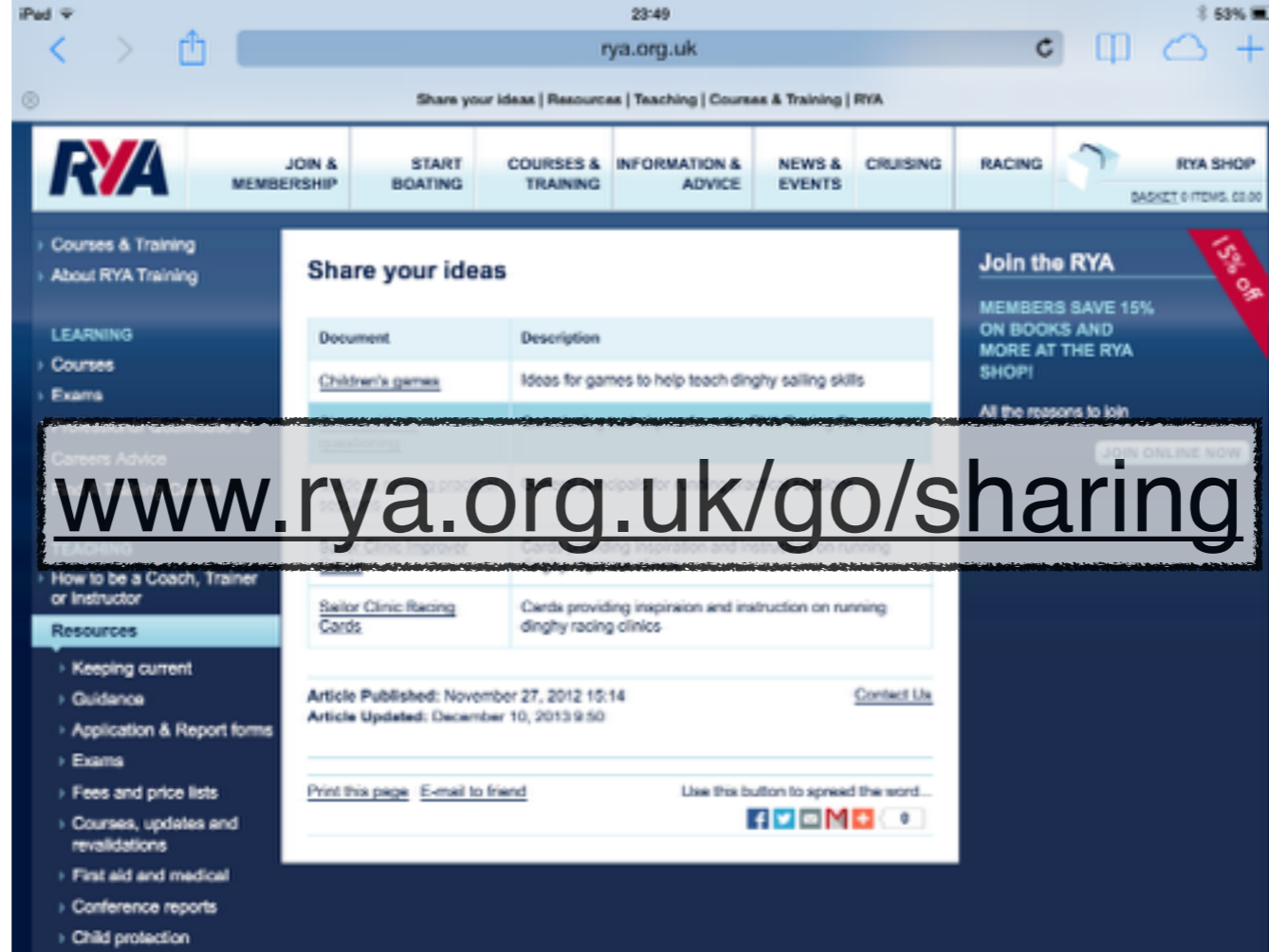


Most MOBs in harbour, Tender safety

kill cord

life jacket

Stickers in delegate packs



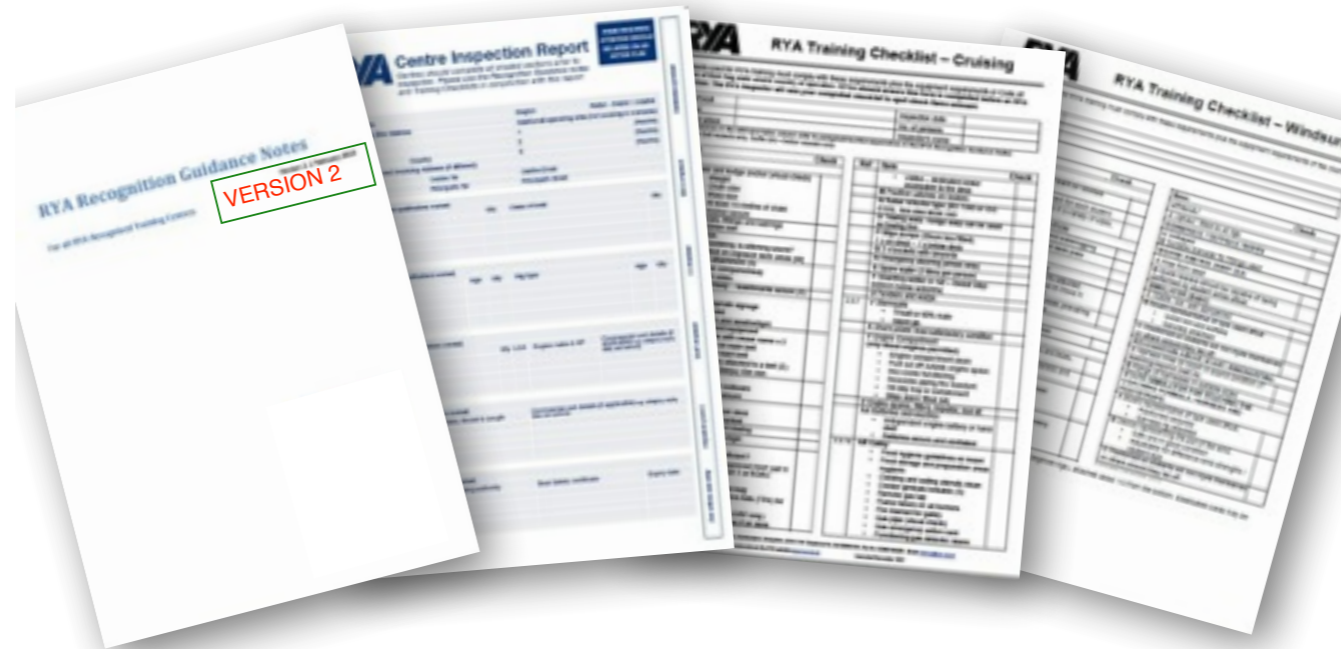
Share your ideas

We would like some ideas from you to add to this list

Email with ideas/suggestions for content



# Combined Guidance Notes



- Version 2, from 1 Feb 14
- Wording clarification
- No major changes
- Single-leaf for ease of replacement





**RYA**



[www.rya.org.uk](http://www.rya.org.uk)

Protecting your Rights, Promoting your Interests

Membership requirement for instructors to update you quals you will need to be a member

Membership 5 year offer cost - 3 for 5 years £129.00, save £86

25% off the RRP and free delivery on the Gill Pro Racer Buoyancy Aid

30% discount across the whole SLAM range

20% discount on OverBoard's range of water, sand and dirt proof products

Up to 30% discount at Ocean Safety



## Communication with Instructors

- [www.rya.org.uk/coursestraining/resources](http://www.rya.org.uk/coursestraining/resources)
- Wavelength
- Facebook  *RYA Training*
- Twitter  *@rya\_training*
- Webinars



**Thank you.....**

