

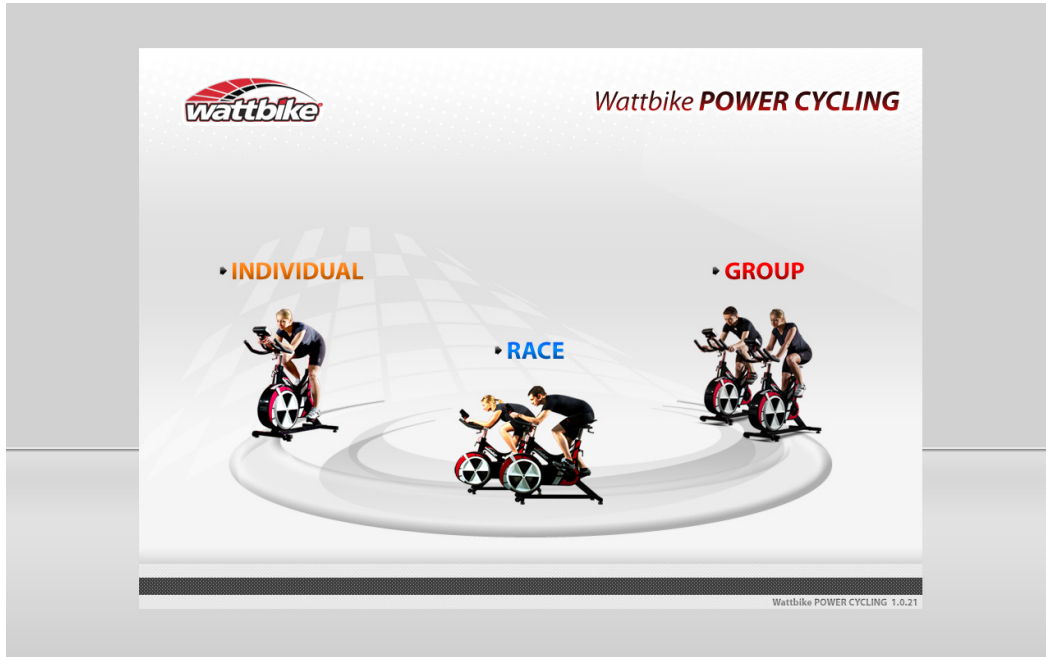
Power Cycling

Quick Start Guide



1.

Click the Wattbike Power Cycling icon from the desktop, Select Group, from the 3 available options.



2.

To make sure that you have the correct monitor connected, select Settings, then Change Device.



3.

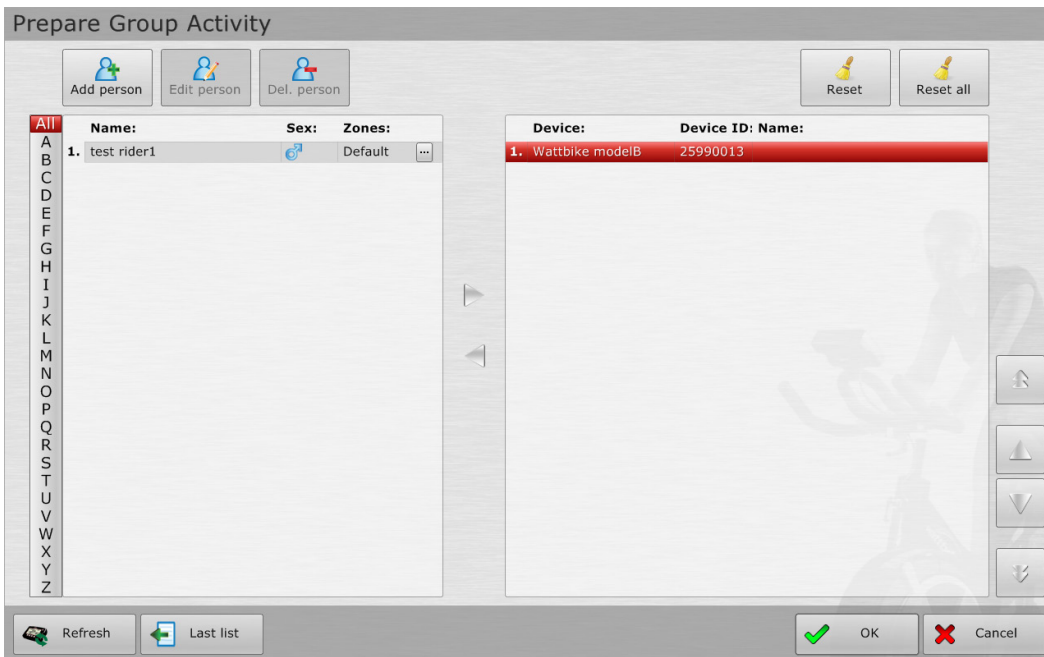
Select the monitor type that you have in your set up. You cannot mix A and B monitors on the same user system



4.

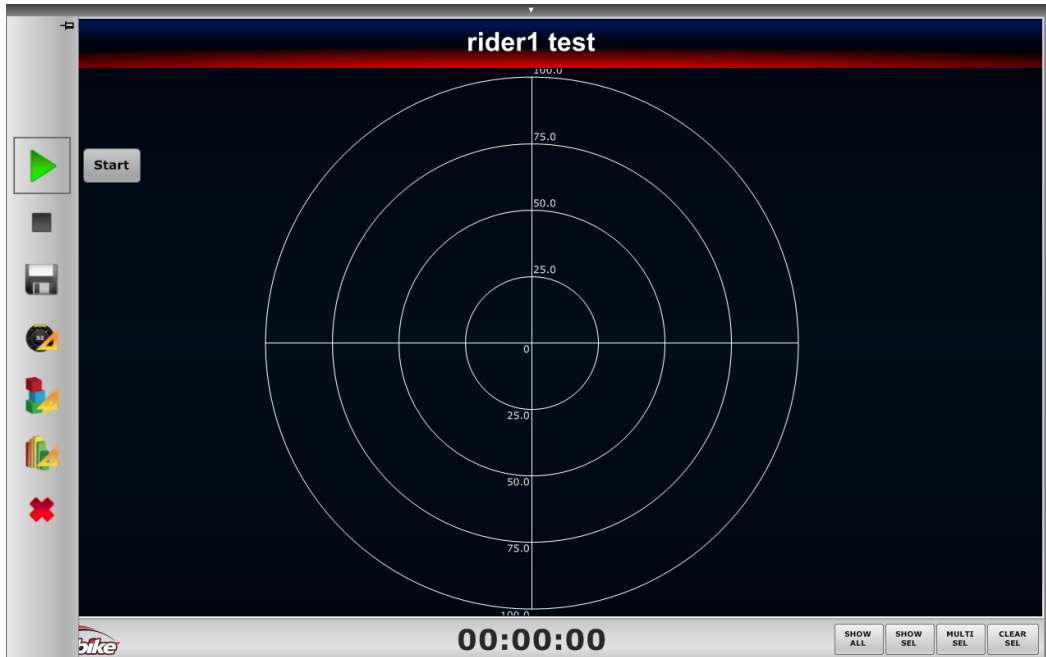
Make sure each monitor is on and connected via the USB cable. In the left column you have each person in the class, in the right column is the device ID of each Wattbike. The list will populate as each bike connects. To assign a rider to a bike: select the bike device id, then click on a rider.

*If all the bikes are not connected select Refresh in the bottom left corner to reload the bike device id's.



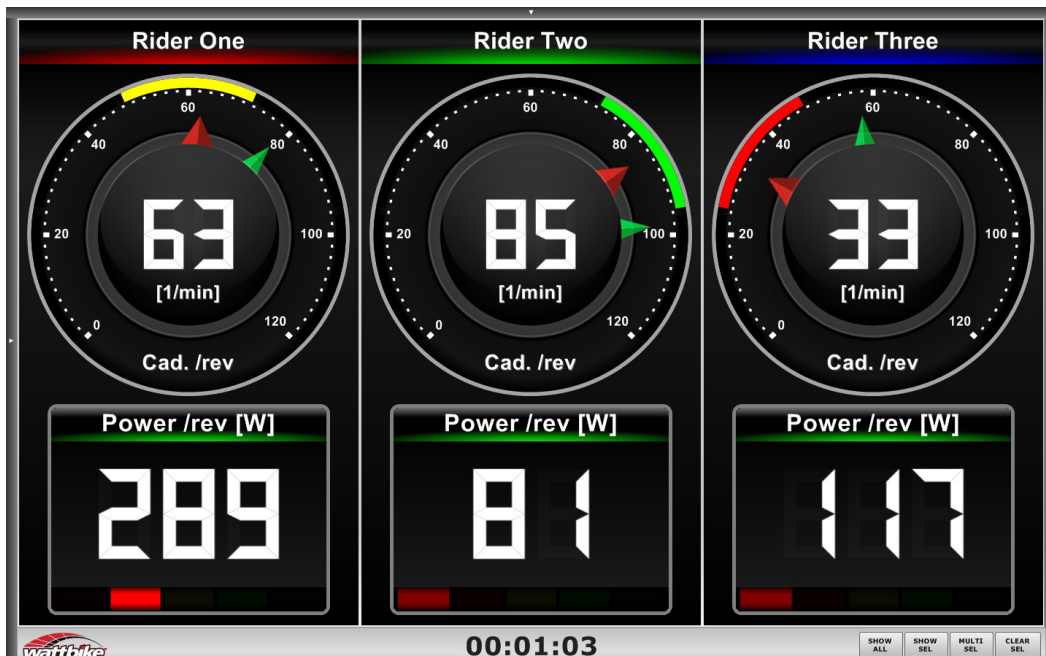
5.

Move the mouse cursor to the left of the screen to open up the flyout tab, and select the Start icon to start the whole session for everyone.



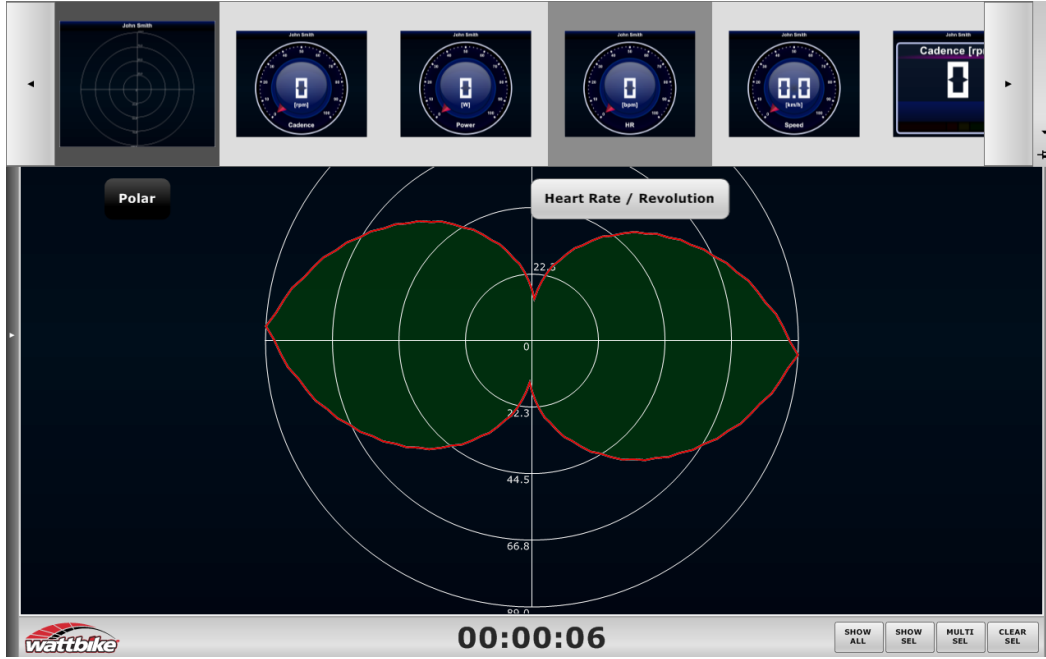
6.

You should also see a grid of all the riders on one screen. Use the buttons in the bottom right corner to select and move as desired. Or double click each rider to view only that rider's screen.



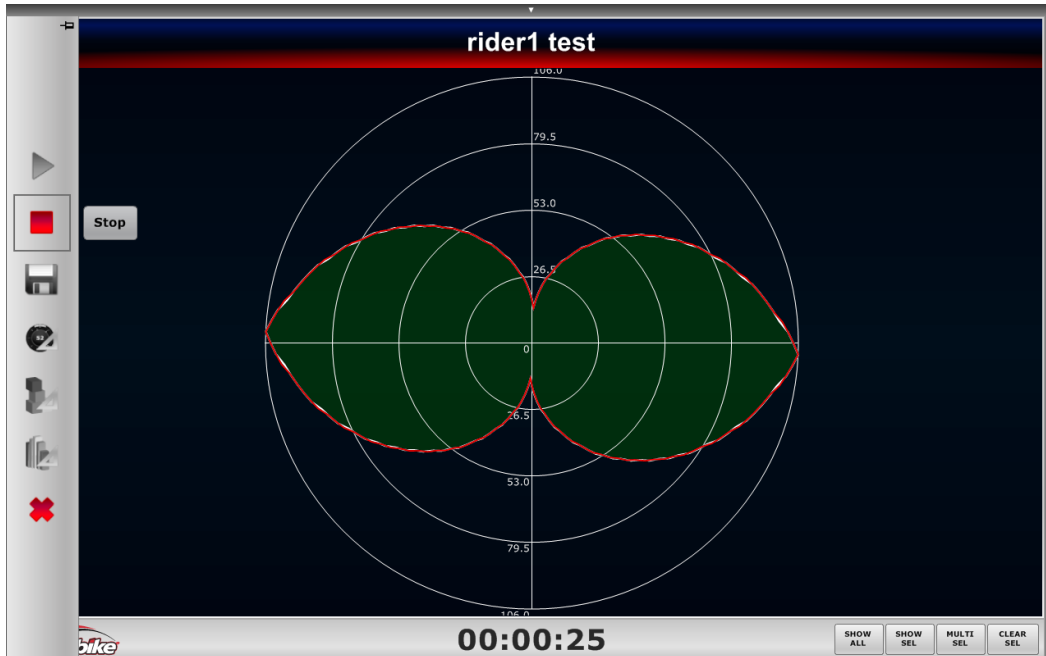
7.

Move the mouse cursor to the top of the screen to select a different screen view for everyone.



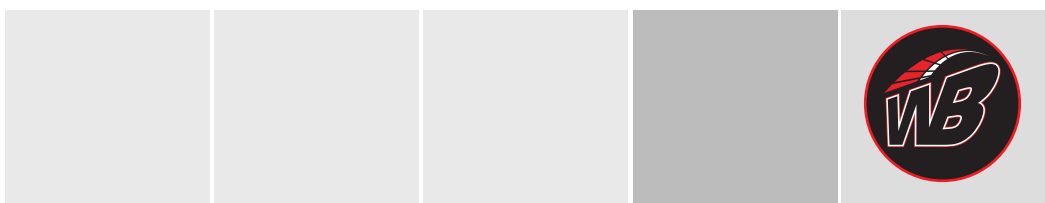
8.

To end the session and stop collecting data, move the mouse cursor over to the left of the screen to open up the flyout tab, and select the red square to stop the session.



9.

To quit and return to the menu screen, move the mouse cursor over to the left of the screen to open up the flyout tab, and select the red cross to exit the session.





wattbike.com