



The Ultimate in Boating Pedestals

STAINLESS STEEL RANGE

**BRIDGEMASTER**



[www.marinetechindustries.com.au](http://www.marinetechindustries.com.au)

# INNOVATION NOT IMITATION

As a proud Australian manufacturer, Marine Tech Industries Australia Pty Ltd manufactures products that compete favourably with our competitors in both Australia and around the world. The products we manufacture are of the highest quality, and reflect value for money. While competitive pricing is important, we believe the quality of our products backed by the excellent service and experience offered by our team, is invaluable to our customers.

We have invested heavily over the years in research and development to ensure all of our products will perform as expected, even in the most demanding conditions. While we offer an extensive product range, we also have an in-house design team that can work with you to help design new products to suit your requirements. Our experience in this area will ensure that the product not only looks good, but will continue to exceed your expectations.

At Marine Tech Industries Australia Pty Ltd, our motto is "Innovation not Imitation". We are constantly looking to design and develop new products that will increase the enjoyment and comfort levels of your boating experience. Regardless of the type and size of your boat, we are sure to have a product in our range to suit your requirements. If not, let us create for you something specifically suited to your individual needs.



## Luxury Helm Seating Systems

### Voyager Elite Helm Seat (With Headrest)

The Voyager Elite Helm Seat is part of an exclusive range designed with headrest incorporated using the latest materials to bring you a seat that is durable, comfortable and stylish. This helm seat features:

- 1: Moulded foams
- 2: Adjustable armrests
- 3: Reclining back rest
- 4: 316 stainless steel frame
- 5: Options include footrest, pedestal or plinth mounted.

CODE: MTIA-VE



### Voyager Helm Seat (Without Headrest)

The Voyager Helm Seat is part of an exclusive range designed using the latest materials to bring you a seat that is durable, comfortable and stylish. This helm seat features:

- 1: Moulded foams
- 2: Adjustable armrests
- 3: Reclining back rest
- 4: 316 stainless steel frame
- 5: Options include pedestal, footrest or plinth mounted.

CODE: MTIA-V



**BRIDGEMASTER**



## Luxury Helm Seating Systems

### Voyager Plinthslider 400 & Voyager Low Back Helm Chair

The stainless steel plinthslider is another unique product from MTIA. It has 400mm travel. By mounting this slider onto a plinth or built in cabinet, it allows you to keep the companionway clear in front of the helm station doing away with expensive or unstable floor rails. On this slider is mounted our Voyager Low Back Helm Seat with the following features:

- 1: Moulded foams
- 2: Adjustable armrests
- 3: Reclining back rest
- 4: 316 stainless steel frame
- 5: Options fitted to our range of stainless pedestal, footrest or plinth mounted.

CODE: VPLMS400  
& MTIA-VLB



### Voyager Low Back Twin Helm Seat

The Voyager Low Back Twin Helm Seat is part of an exclusive range designed using the latest materials to bring you a seat that is durable, comfortable and stylish. This helm seat features:

- 1: Moulded foams
- 2: Adjustable armrests
- 3: Reclining back rest
- 4: 316 stainless steel frame
- 5: Options fitted to our range of stainless pedestal, footrest or plinth mounted.

CODE: MTIA-VLB-TH



**BRIDGEMASTER**



## Stainless Steel Adjustable & Fixed Helm Seat Pedestals



### Stainless Steel Low Profile Helm Pedestal

**Options:**

- 1: Fixed Stainless Steel Pedestal Swivel Lock (as shown SFPSL)
- 2: Fit MTIA'S stainless sliding systems
- 3: Fit our range of Voyager helm seats
- 4: Fit your own helm seat
- 5: Polished to a mirror finish.

**CODE: SLPP**



### Stainless Fixed Helm Pedestal

**Options:**

- 1: Fixed Stainless Steel Pedestal Swivel Lock (as shown SFPSL)
- 2: Fit MTIA'S stainless sliding and footrest systems
- 3: Fit our range of Voyager helm seats
- 4: Fit your own helm seat
- 5: Height can be customised
- 6: Polished to a mirror finish.

**CODE: SFP100**



### Stainless Adjustable Helm Pedestal

This pedestal has a gas spring assist height adjustment of 200mm and it can be locked off at your required height.

**Options:**

- 1: Fixed Stainless Steel Pedestal Swivel Lock (as shown SFPSL)
- 2: Fit MTIA'S stainless sliding and footrest systems
- 3: Fit our range of Voyager helm seats
- 4: Fit your own helm seat
- 5: Height can be customised
- 6: Polished to a mirror finish.

**CODE: SADJH**



### Stainless Softrider Elite Pedestal

The Softrider Elite Pedestal is a unique design. These pedestals are available in three height options of 600mm, 700mm and 750mm. The Softrider Elite has a gas spring assist height adjustment and can be fitted with the following:

**Options:**

- 1: Fit MTIA'S stainless sliding and footrest systems
- 2: Fit our range of Voyager helm seats
- 3: Fit your own helm seat
- 4: Polished to a mirror finish.

**CODE: SSRE**



## Stainless Pedestal Options



### Elite Electric Slider

The Electric Slider has the fore and aft system adjusted electrically. It has up to 150mm travel and is compatible with our Softrider Elite range of stainless steel pedestals.

CODE: SSRES



### Voyager Pedestal Footrest

The footrest mount is compatible with our full range of stainless steel pedestals. It is available with or with the wooden insert.

CODE: VSFR/W



### Softrider Elite Manual Slider with or without Footrest Mounts

This manual slider is adjustable and has 150mm of travel. This slider is lockable in any position and has footrest mounts to fit our selection of footrest. It is compatible with our Softrider Elite pedestal range.

CODE: SSRSM & SSRMSF



### Stainless Steel Fixed Pedestal Swivel Lock

The Stainless Steel Fixed Pedestal with Swivel Lock is designed to fit our adjustable, fixed and low level pedestals. This can have a custom made top plate to suit your requirements.

CODE: SFPSL



### Manual Slider with or without Footrest Mounts

The Manual Slider is adjustable and has 150mm of travel. This slider is lockable in any position and has footrest mounts to fit our selection of footrest. It is compatible with our range of stainless fixed and adjustable helm seat pedestals.

CODE: SMS & SMSFM



### Twin Helm Slider

The Twin Helm Slider is unique to Marine Tech Industries it allows you to mount two Helm Seats side by side, mount a bench type seat or our Voyager Twin Hem Seat, This Twin Helm Slider is available in two sizes the SSTHS900 (900mm) and the SSTHS700 (700mm).

CODE: SSTHS

**BRIDGEMASTER**



## Stainless Steel Table Systems

### Stainless Steel Triple Stage Table Pedestal

This unique Triple Stage Pedestal has gas spring assisted height adjustment. The standard table pedestal has an extended height of 700mm and can be lowered to 330mm. This height can be customized to suit your requirements. These tables are polished to a high quality mirror finish or finished to suit your decor. The adjustable table pedestal has a 200mm square plate fitted to the upper tube to support the table top. This table pedestal is compatible with our stainless steel slider. The table pedestals can be mounted individually or in pairs depending on requirements. Top plates can be customised to suit your requirements.

CODE: SADJT



### Stainless Steel Adjustable Table Pedestal

The Stainless Steel Adjustable Table Pedestal has gas spring assisted height adjustment. The standard table pedestal has an extended height of 700mm and can be lowered to 400mm. This height can be customised to suit your requirements. The adjustable table pedestal has a 200mm square plate fitted to the tube to support the table top. Tube sizes are 63/76mm, 76/101mm and 101/127mm. All tables can be fitted with a stainless steel table slider. The table pedestals can be mounted individually or in pairs depending on requirements. Top plates can be customised to suit your requirements.

CODE: SADJ



### Stainless Steel Removable Table System

The Stainless Steel Removable Table Pedestal has a standard height of 700mm this table system can be fixed to an adjustable height pedestal. The removable table pedestal is unique in that it only requires 40mm of floor penetration, this product is exclusively made by Marine Tech Industries. The removable table can be custom built to suit your requirements and all tables can be fitted with a stainless steel table slider.

CODE: SSRT



### Stainless Steel Fixed Table System

The stainless steel fixed table pedestal has a standard height of 700mm or can be custom built to suit. The fixed table pedestal has a 200mm square plate welded to the tube to support the table top. (The picture shown for the SFT shows an optional removable table swivel top STSL). Tube sizes for the fixed table pedestal are available in 76mm, 101mm, 127mm, 150mm, 200mm and 250mm. All tables can be fitted with a stainless steel table slider.

CODE: SFT





# Stainless Steel Electric Table Pedestal Systems

## Stainless Steel Electrical Table Pedestal

The Stainless Steel Electric Table Pedestal requires a cavity below the floor of 100mm to allow for the installation of the motor. This Stainless Steel Electric Pedestal has a travel of 300mm and a lift capacity of 80kgs.

The table pedestal has an extended height of 700mm and can be lowered to 400mm. It has its own control box which can run up to 4 pedestals in sync and are custom built to your requirements. The electric table pedestal has a 200mm square plate fitted to the tube to support the table top. Tube sizes are available in 127/100mm or 150/127mm. All tables can be fitted with a stainless steel table slider.

CODE: SADJ10E

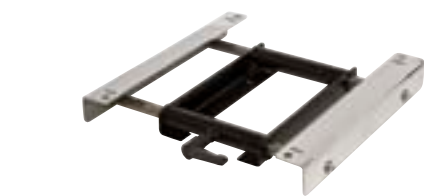


## Customised Stainless Steel Electric Table Pedestal

This Stainless Steel Electric Table has up to 400mm of travel. The travel is controlled by its own unique control box which can be programmed to a specified height. It has a lift capacity of 200kgs. Its control box can run up to four pedestals two in sync and an additional two independently.

The electric table pedestal has a 300mm square plate fitted to support the table top. The tube size for the Electric table pedestal 250/220mm. These tables can be fitted with a stainless steel sliding system, customized to your requirements. These table pedestals can incorporate a customised seal for outdoor use.

CODE: SADJE



## Table Slider For All Table Pedestals

The Table Slider is adjustable and has 300mm of travel. This slider is lockable in any position. This Slider fits our range of Fixed & Adjustable Stainless Steel Table Pedestals.

CODE: STS300

## Customized Stainless Steel Electric Helm Seat Pedestals

This customised Electric Helm Seat Pedestal is the pinnacle of helm seat pedestal design. Electric rise and fall (200mm adjustment) electric, forward and aft adjustment of 150mm. It has a lift capacity of 200kgs. Tube sizes 250/220mm custom built to your requirements. These helm seats are designed to our Voyager range of helm seats or be customised to suit your own helm chair. These table pedestals can incorporate a customised seal for outdoor use.

CODE: SADJHE





## Marine Tech Industries Australia Pty Ltd

Marine Tech Industries offers the boating industry an extensive range of top quality pedestals, table systems and seats. We have combined the latest technology & materials to bring you a product that is durable, comfortable & stylish. On the water it's the quality & performance that counts & our Softrider system is the ultimate in boating pedestals.

**Proudly Manufactured in Australia & Exported World Wide**



**BRIDGEMASTER**



Distributed by

Factory 3, 209 Liverpool Road Kilsyth, Victoria, Australia 3137  
Tel: 1300 300 089 International: +61 (3) 9761 9322  
Email: [sales@marinetechindustries.com](mailto:sales@marinetechindustries.com)  
[www.marinetechindustries.com.au](http://www.marinetechindustries.com.au)