



YAMAHA

MUSIC PRODUCTION GUIDE

OFFICIAL NEWS GUIDE FROM YAMAHA & EASY SOUNDS FOR YAMAHA MUSIC PRODUCTION INSTRUMENTS

05|2014

Contents

Yamaha Artist Emily Dolan Davies	3
MOTIF XF V 1.50 Guitar sounds using amp modeling part 2	5
MUTEC Flash Expansion for MOTIF XF & MOXF	12
MOXF Using your own Samples	14
Exploring Sound: Nature of Chill Pt. 2	17
Sounds & Goodies	21
Imprint	35

A photograph of Emily Dolan Davies, a woman with blonde hair, wearing a black leather jacket and playing a drum set. She is surrounded by warm, glowing string lights that create a bohemian atmosphere. The background shows a dimly lit room with a mirror and some furniture.

EMILY
DOLAN
DAVIES



Yamaha Synth 40th Anniversary

40 YEARS OF INSPIRATION

YAMAHA CELEBRATES 40 YEARS IN SYNTHESIZER-DESIGN WITH BRANDNEW MOTIF XF IN A STUNNING WHITE FINISH



MOTIF XF6 WH

MOTIF XF7 WH

MOTIF XF8 WH



Since 1974 Yamaha has set new benchmarks in the design of excellent synthesizers and has developed innovative tools of creativity. The unique sounds of the legendary SY1, VL1 and DX7 have influenced a whole variety of musical styles. Yamaha's know-how, inspiring technique and the distinctive sounds of a 40-years-experience are featured in the new MOTIF XF series that is now available in a very stylish white finish.

- FL1024M FLASH MEMORY
- USB FLASH MEMORY (4GB)
- INCL. SOUND LIBRARIES:
 - CHICK'S MARK V
 - CS-80
 - ULTIMATE PIANO COLLECTION
 - VINTAGE SYNTHESIZER COLLECTION



EUROPE.YAMAHA.COM





YAMAHA ARTIST EMILY DOLAN DAVIES

On the DTX-stage at the Frankfurt Musikmesse the young English drummer Emily Dolan Davies showed what one can do with talent and Yamaha Electronic Drums: We have met the new face in the big Yamaha family to get to know her a little bit more.

So tell us a bit about your background.

I'm a drummer from London, UK and have been playing since 1999. I started out learning a lot by going to blues jams, playing in bands and getting private lessons, and I am still learning a lot by going to jams, playing with many different bands and still having lessons!

Although I had been playing for many years, and in many various bands, I got first real break as a professional musician with a band called „The Hours“ in 2008, a 7 piece indie rock band who I toured with for a year and a half. I recorded an album, 'See The Light', and worked with some very interesting people including singer Bono, artist Damien Hirst, producer Flood, and director Tony Kaye, amongst many others!

Soon after that I got a call from an old friend of mine asking if I was free for a last minute show, to which I said yes, and it turned out to be for Bryan Ferry! I continued to tour on and off in his corporate band for the following four years and also recorded on his album 'Olympia' alongside countless legendary musicians!

In between working with Bryan I also toured with trip-hop artist Tricky, pop singer Cher Lloyd and Jazz artist Emilia Mitiku, so keeping myself very busy in a variety of different genres!

This year I have been touring with UK pop artist Janet Devlin, as well as touring and recording with country rock artist (and ex-Black Sabbath bass player) Jo Burt, as well as demonstrating for Yamaha at various music shows.

How did you get involved with Yamaha?

Well, I've always played Yamaha, since my very first kit, which was an electronic Yamaha DTXPro, then later a Stage Custom and have been in love with their drums and electronics ever since! Then when I was touring with Tricky, which used a heavy amount of electronics, I was lucky enough to start endorsing them too! This carried on to the acoustic drums, and then I was asked to start demonstrating certain products, so it's been a natural progression of a relationship that has taken place over many years. They really are a lovely bunch of people, and look after me so well!

What setup are you using at the moment?

Well it depends on the gig I am doing at the time, but as a general rule at the moment it is a Yamaha 9000 Recording Custom in 22, 12, 14, and all tuned quite low, a 14x6 1/2 Brass snare and DTX-Multi12. Its flexibility covers just about any kind of style I need to be playing, and always sounds great! In the past though I've played much more elaborate setups, for instance with Cher Lloyd I was using the DTX900 brain with 11 external pads, acoustic triggers and foot pedals! But if the music calls for it, Yamaha seems to always deliver for me!

What advantages are there in using Yamaha DTX E-Drums?

There is a huge amount of advantages! For me I can't remember the amount of times I've been in rehearsals for an artist and at the last minute the artist has decided we need electronic sounds or loops on a song! Luckily I've always had the DTX-Multi 12 or DTX900 brain with me and been able to do exactly what the music needs, quickly, simply and easily.

It's a priceless thing being able to deal with potentially stressful situations with ease, and giving the artist and their music exactly what they need!

Who are your main influences?

I have many influences in my drumming and am constantly being inspired, but some musicians that I always will come back to are Levon Helm, James Gadson, Steve Gadd, Steve Jordan, Jeff Pocar, Jeremy Stacey, Ian Thomas. All these guys have a groove so fierce and beautiful that makes me lose my breath, and my heart just want to burst out of my chest!

And what do you have coming up?

Coming up I have a UK and Canadian tour with Jo Burt promoting his new album, 'Indestructible', another UK tour with artist Janet Devlin promoting her debut album, 'Running with Scissors' as well as other random gigs with random people in random places. I like to be kept on my toes and keep it varied! Probably the best place to see where I am next is www.emilydrums.com



MOTIF XF

MOTIF XF
V1.50 Update

MOTIF XF V 1.50 = GUITAR SOUNDS USING AMP MODELING

PART 2 = SOUNDS FOR ELECTRIC GUITARS VIA A/D INPUT

The first episode of this workshop was about the application of the new insert effects on existing guitar Voices.

In this episode, we will describe how the guitar insertion effects can be used for a guitar that's connected to the A/D input.

This is of particular interest for those MOTIF XF users who also play electric guitar or work with a guitarist.

By the way: On the occasion of the firmware update to version 1.5 (which features the new guitar effects) the electric guitar is the focus of this three-part series. However, technical processes such as the setting of the

A/D Parts or recording backing tracks are also applicable to other instruments or vocals. So do not pass up the know-how of this series, even if you are not particularly interested in guitars.

Even MOTIF XS users can benefit partially from the know-how of this episode - whether with or without interest in guitar sounds. While the MOTIF XS does not have the new guitar effects nor the new Performances of the MOTIF XF (USER 1), the handling of the A/D input is the same as on the MOTIF XF. Ampsim or distortion effects can alternatively be used for a connected electric guitar.

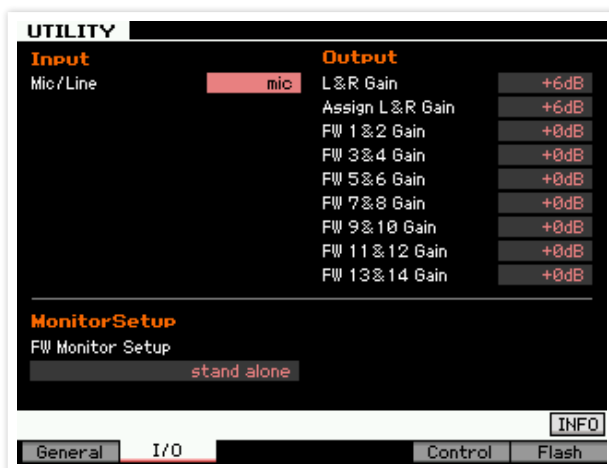
SETTING UP THE AUDIO INPUT

When connecting an electric guitar to the A/D input (L) of the MOTIF XF, some global settings are important first.

In UTILITY - F2 I/O the parameter "Input" can be toggled between "mic" and "line".

"Mic" is designed for devices with low output, "Line" for devices with high output level.

The manual states that a guitar is an instrument with low output, so normally this parameter had to be set to "mic".



But depending on the actual output level of the connected guitar it can also be useful to select the "line" setting instead.

The input level is adjusted with the Gain knob on the rear panel (next to the A/D input).

So if you choose "mic" as setting for the input, you should first turn the gain knob all the way down. Then after connecting the guitar you slowly increase the gain level to protect your ears and your speakers!

If you choose "line", you will probably have to set the gain knob to maximum in order to achieve a sufficient level.

For the guitars I used (Gibson Les Paul and Fender Stratocaster) I've had good experiences with the "line" setting and a maximum gain level. When recording lead sounds, I have also increased the volume parameter of the A/D input from 100 (default) to 127.

You should take your time for the correct level adjustment of the guitar. An optimal level is an important prerequisite for the success of subsequent recordings. If the level is too low, the recording will be too vague. If the level is too high, however, you will have to contend with very ugly digital distortions. These can be difficult to hear when they mix with the desired distortion of the amp models. You may then simply hear a not authentic, gritty distortion sound without being aware that this is caused by an excessive input level.

If you do not trust your ears, you can use the level indicator in the record standby mode of the Integrated Sampling mode as an optical control. More about that later when we describe the recording of guitar tracks.

WHICH MODE TO SELECT?

The A/D input is available in all play modes of the MOTIF.

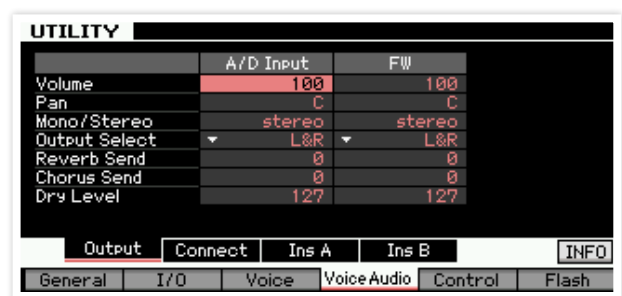
In the Voice mode all A/D settings are globally available in UTILITY (F4 - Voice Audio).

In Performance mode, the A/D settings are found in EDIT - COMMON EDIT - F4 Audio In. The A/D settings are stored individually per Performance and are also transferred to the destination Song or the destination Pattern when the Performance Recording or Performance Copy functions are executed.

In the Song and Pattern mode, the A/D settings are made individually in the Mixing of each Song or Pattern (F2 - Audio) and are stored there as well.

The A/D displays are the same in all play modes:

- F1 - Output = Mixing settings of the A/D Part
- F2 - Connect = Selection and connection of the Insert effects
- F3 - Ins A = Parameters for Insert effect 1
- F4 - Ins B = Parameters for Insert effect 2



However, please note that the setting of the input gain (mic/line) is always done globally in UTILITY - as described above.

In this workshop we will add live-played guitar sounds to backing tracks that were generated by the Performance Recording function. Therefore, the following examples will first explain how to set the A/D Part for certain Performances, which are then transmitted automatically into Songs using Performance Recording.

The advantage of doing so is that you can store the settings of the A/D Part including the insert effects to the selected Performances and can retrieve them for other recordings or sessions.

However, if you use the Voice mode to experiment with the A/D Part and the new guitar effects, you have no way to store good results, since there are no memory slots for the A/D Part available.

We will therefore proceed as follows:

1. Select Performances that are suitable for guitar backings
2. Program and store the A/D Part settings for the selected Performances
3. Use Performance Recording to record backing tracks, while the stored A/D settings are automatically transferred to the Song mode
4. In Song mode record audio tracks from the live-played guitar with the guitar insert effects. This step, however, is covered in the next episode

If you are a keyboardist working with a guitarist, you can just leave it in a session without recording the same.

In this case it is sufficient if you only perform the first two steps.

SELECTING PERFORMANCES

Here's a list of some Performances of the MOTIF XF that might be interesting as guitar backings. Not only rock/blues/jazz styles were taken into account, but also some electronic or atmospheric oriented Performances, where

a lead guitar is rather unusual, but can be quite interesting with corresponding effect programming.

Only the new Performances from USER1 have been included in the selection. However, you will still be able to discover plenty of other candidates in the other USER banks, if necessary.

MOTIF XF PERFORMANCES – USER1

- 003 (A03) – ALTERED STATES Category: Rock (Hard)
- 005 (A05) – INDIAN XPERIENCE Category: Elect (Chill)
- 009 (A09) – LIGHTHOUSE Category: Elect (Tekno)
- 019 (B03) – RULE THE EARTH Category: Rock (Clasic)
- 027 (B11) – BIG WATCHES Category: Rock (Top 40)
- 028 (B12) – SWINGIN' ORGAN CLUB Category: Jazz
- 051 (D03) – INTO THE SUNSET Category: Rock (Balad)
- 062 (D14) – DON'T LOOK Category: R&B (Modrn)
- 067 (E03) – ALTERNATIVE POP Category: Rock (Top 40)
- 075 (E11) – LOVE HER CRAZILY Category: Rock (Clasic)
- 083 (F03) – ROCKIN' THE COUNTRY Category: Rock
- 086 (F06) – TENOR TO THE MAX Category: Jazz (JzFnk)
- 091 (F11) – 60S BORDER TOWN Category: Rock (Clasic)
- 099 (G03) – AUTO BALLAD Category: Rock (Balad)
- 108 (G12) – WALTZING QUARTET Category: Jazz
- 123 (H11) – MINOR MOOD Category: Rock (Balad)

SETTING UP THE A/D PART AND GUITAR EFX IN A PERFORMANCE

We can only highlight some of the above listed Performances in this context and present the basic settings for the Guitar Efx. A convincing setting of the guitar amp models, however, depends on many individual factors, so in any case you should adjust the settings for your guitar, the pickups used, and last but not least your taste.

XAMPLE 1: BRITISH LEGEND BLUES

Slightly distored blues guitar sound

- Select the Performance *USR1:027 (B11) Big Watches*
- Press *F6* Effect – *F4* Audio In
- Press *SF3* to select *Insert Effekt A (Ins A)*
- Select „Guitar Efx“ as Category

- Select the Type „British Legend“
- Set the parameters as shown
- Press SF1 Output and set Reverb Send to 24



Modify the settings according to your own taste. In particular adjust the parameters Preamp and Master Volume to match the output level of your guitar.

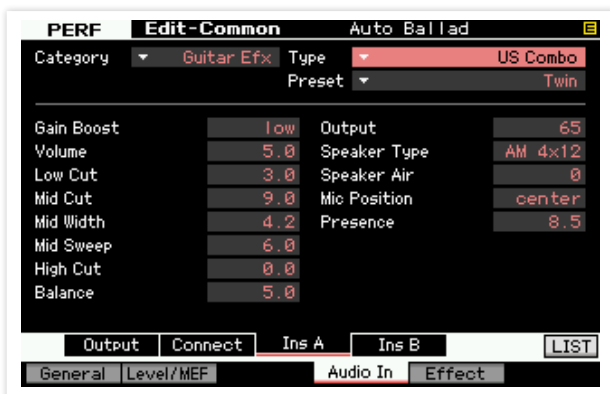
The Bass setting is also important. Bridge pickups can usually tolerate more bass than neck pickups.

Save the edited Performance with STORE.

XAMPLE 2: US COMBO CLEAN

Clean lead sound

- Select the Performance USR1:099 (G03) Auto Ballad
- Press F6 Effect – F4 Audio In
- Press SF3 to select Insert Effekt A (Ins A)
- Select „Guitar Efx“ as Category
- Select the Type „US Combo“
- Set the parameters as shown
- Press SF1 Output and set Reverb Send to 24



Modify the settings according to your own taste.

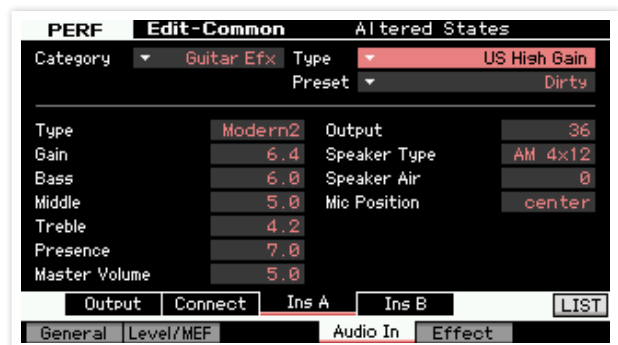
Change Gain Boost from "low" to "high" and reduce Output significantly. The clean sound then becomes a more crunchy sound.

Save the edited Performance with STORE.

XAMPLE 3: US HIGH GAIN DIRTY

Heavily distorted lead sound

- Select the Performance USR1:003 (A03) Altered States
- Press F6 Effect – F4 Audio In
- Press SF3 to select Insert Effekt A (Ins A)
- Select „Guitar Efx“ as Category
- Select the Type „US Combo“
- Set the parameters as shown
- Press SF1 Output and set Reverb Send to 24



Do you also think, that this sound could use a nice delay effect?

Then press SF4 - Ins B, select the Category "Delay" and, for example, the type "Tempo Cross Delay". Set the Dry/Wet balance to your taste (eg D32> W).



Save the edited Performance with STORE.

These are just some examples that you can continue in any way you like.

The next step is to record backing tracks to which you can finally jam to!

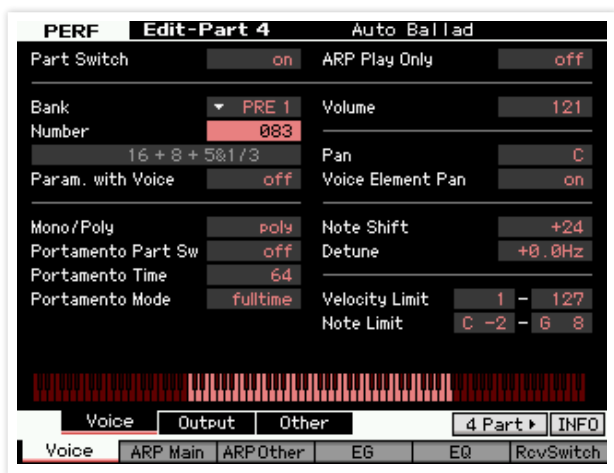
In this context: Here's another tip on how to prepare individual Performances even better for effective backing tracks.

Many Performances include a lead sound for right side of the keyboard - but that is actually not needed for the backing, because it would likely collide with the live played lead guitar.

So replace that lead part with a suitable accompanying sound.

Example:

In the Performance 099 (G03) – „Auto Ballad“ select the organ Voice Pre 1 – 083 „16 + 8 + 5&1/3“ for Part 4 with a Volume setting of 100.



RECORDING BACKING TRACKS USING THE DIRECT PERFORMANCE RECORDING FUNCTION

A special highlight in the context of the 4-Part Arpeggiator is the ability to record complete arpeggio arrangements directly from the Performance mode by hitting a single button. This procedure is called "Direct Performance Recording." The actual recording is done in the Song or Pattern mode, where the sound and arpeggio settings of the Performance are automatically applied to.

So if you want to spontaneously record your musical ideas that are based on the many inspiring Performances, you don't have to enter the Song mode and make various settings first.

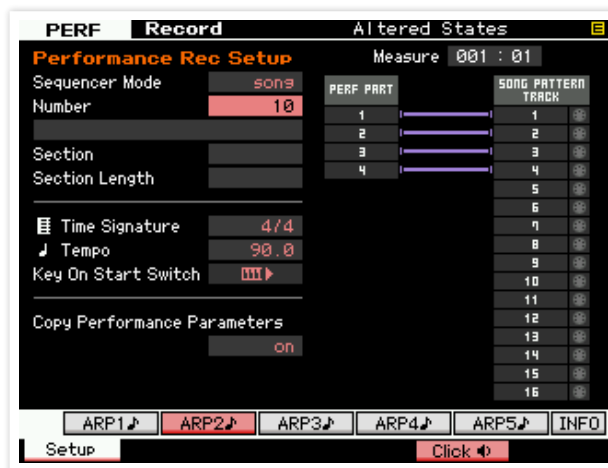
Exactly this procedure is ideally suited to record inspiring backing tracks using the Performances of the MOTIF.

After recording the backing, jam sessions or further recordings can take place in the Song mode. The MOTIF XF then becomes a luxury backing machine with a built-in guitar amp.

THESE ARE THE STEPS FOR „PERFORMANCE RECORDING“:

- Select a Performance
- Press the RECORD button. „Performance Rec Setup“ is displayed
- Select the Sequencer mode „song“ (or „pattern“)
- Activate „Key On Start Switch“. An arrow appears next to the keyboard symbol. Recording starts as soon as a note is played on the keyboard
- Play your chord progression or your melody without having pressed the PLAY button before. Use F5 to mute the click
- Stop the recording
- MODE – SONG (or PATTERN)
- Press PLAY to play back your Song or your Pattern

All Performance settings including the A/D Part settings are automatically copied to the destination Song in the recording operation. The results is a finished Song or Pattern Section with 4 Tracks/Parts including the Mixing settings for the Parts 1 - 4 and the A/D Part.



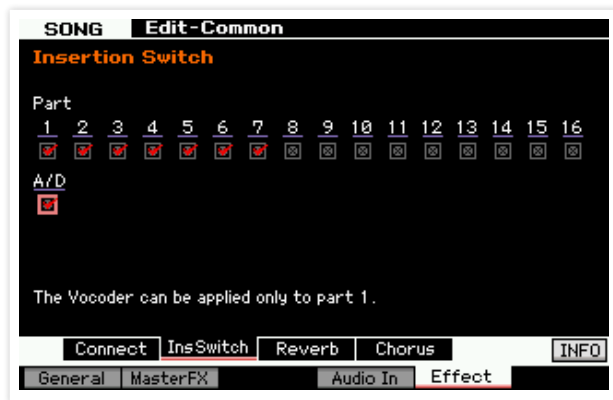
ENTER SONG MODE – ACTIVATE A/D PART – AND JAM!

Important: If you want to use the Insert effect for the A/D Part in Song or Pattern mode, you have to enable it in the "Insertion Switch" display. This also applies if the settings of the A/D Part were transferred to the Song Mixing by the Performance Recording function.

In a new Song, the maximum of eight Insert effects are initially enabled for Parts 1 - 8. So you need to turn off the Insert effect for one of those eight Parts in order to enable it for the A/D Part.

THESE ARE THE STEPS TO ENABLE THE INSERT EFFECT FOR THE A/D PART:

- EDIT – EDIT COMMON
- F5 Effect
- SF2 InsSwitch
- Part 8 (or another Part 1 – 7) = Insertion Switch OFF
- Part A/D = Insertion Switch ON

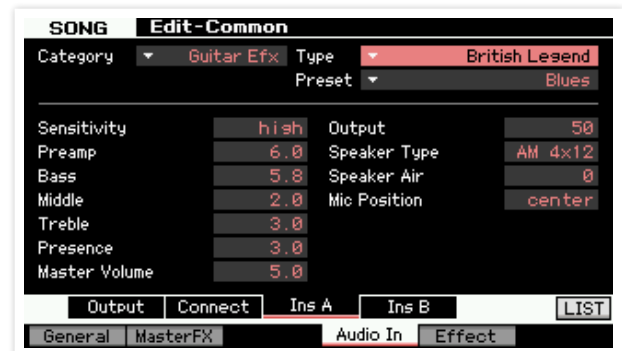


Whether further A/D settings are required or not depends on whether these were already made in the Performance mode and thus transferred to the Song by the Performance Recording function.

If this is not the case, you can set the A/D Part in the Song: MIXING-Mode – EDIT – COMMON EDIT – F5 Effect – F4 Audio In

The displays here are the same as in the Performance mode.

Now that the A/D Part is ready and the guitar sounds good, the jam session can start at last.



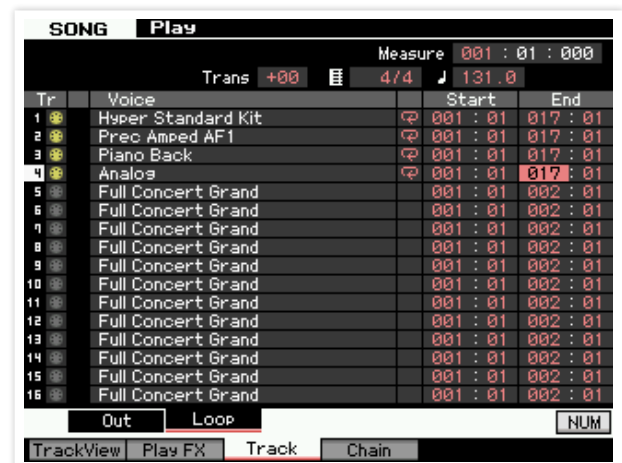
Depending on the length of the recorded backing it may be desirable to loop the Song Tracks in order to not having to re-start the Song again and again and interrupt the guitar playing.

Proceed as follows to set loops for Song Tracks:

- SONG Play – F3 Track
- SF2 Loop
- Activate the Loop symbol - in the third column of the display (between „Voice“ and „Start“) - for the Tracks 1 – 4
- Set the end of the Song in the "End" column

If you don't remember the length of your Song, you could take a look on the Track View (F1), scroll through the bardisplay at the top and observe the graphic display of the Track's content.

A 16-measured loop - set for Tracks 1 - 4 - for example is shown as follows:



In the next episode we will finally describe how to record guitar Tracks to the existing backing Tracks.

Until then: keep practicing!

Peter Krischker

MOXF

A universe of sounds
FROM A DECADE OF **MOTIF**



NEW

MOXF8



NEW

MOXF6

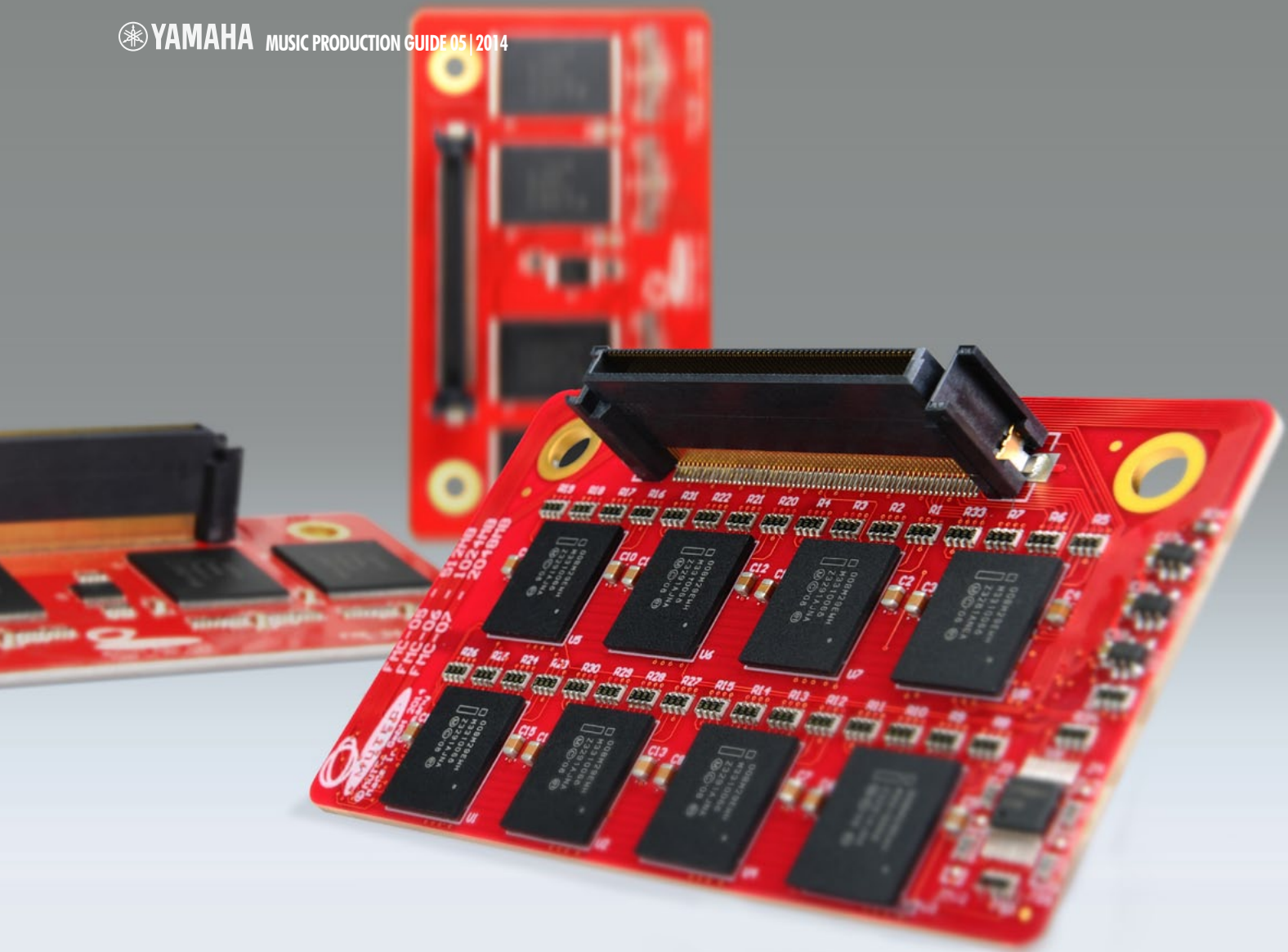


- WAVEFORM DATA FROM THE MOTIF XF ••• 128-NOTE POLYPHONY
- UP TO 1 GB OPTIONAL FLASH SAMPLING MEMORY ••• BUILT-IN USB AUDIO/MIDI-INTERFACE
- LIGHTWEIGHT AND PORTABLE ••• AUDIO INPUT, INCLUDING VOCODER EFFECT
- FREE VST3 EDITOR SOFTWARE ••• SEAMLESS INTEGRATION IN STEINBERG CUBASE •••

 [FACEBOOK.COM/YAMAHA.SYNTHESIZERS.EU](https://www.facebook.com/yamaha.synthesizers.eu)

EUROPE.YAMAHA.COM

 **YAMAHA**



MUTECH FMC-07

FLASH EXPANSION FOR MOTIF XF & MOXF

In May, the well-known German manufacturer of memory expansions MUTECH GmbH presented the FlashROM memory expansion FMC-07 with a capacity of 2 GB.

In the official press release the manufacturer states:

"MUTECH from Germany, manufacturer of professional audio and video equipment, starts to ship the new FMC-07 FlashROM expansion card which enables users of Yamaha Tyros 4+5, MOTIF and MOXF music workstations to double the memory capacity of their devices.

MUTECH's exclusive FMC-07 high-density FlashROM memory expansion card offers - worldwide unique - with 2,048 MB the largest memory capacity for Yamaha's Tyros 4+5, MOTIF XF and MOXF music workstations. With help of the FMC-07, the current maximum memory of all previously mentioned workstations can now be easily doubled. That enables the user to play with much larger Waveforms/Samples, respectively with Samples of higher resolution for better sound quality. Especially for live events, the FMC-07 allows to play longer rhythm loops or other background sounds without the need of re-loading the FlashROM memory. Apart from all that, the handling of the FMC-07 is very easy, it can be

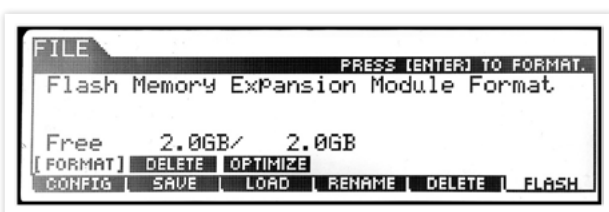
exchanged with every of the standard FlashROM cards. In the MOTIF workstations, the combined use of the FMC-07 with Yamaha's or MUTEK's 512MB (FMC-05) or 1024MB (FMC-06) FlashROM cards is possible.

The FMC FlashROM expansions are based on a 6-way multilayer PCB design which helps to reduce electrical noise during data transfer which supports best possible sound. To secure the highest production quality, the FMCs are assembled with components of brand name manufacturers only on latest assembling-machines. Their perfect working is guaranteed by 100% in-system-tests. All MUTEK FMC FlashROM expansions are strictly manufactured in Germany and available from now on all over the world."



Harald Landsdorf – known as "Musiker Lanze" in the Yamaha bulletin board - and I had the opportunity to test the new expansion boards with both the MOTIF XF and the MOXF. We had two FMC-07 at hand. In the MOTIF XF we tested them both and one in combination with a Yamaha FL1024M.

The flash boards are delivered checked and formatted (for MOTIF XF). The installation of the boards is analogous to the original extensions FL512M and FL1024M made by Yamaha. In the MOXF the formatting has to be started again after installation. After formatting is complete, the full capacity is displayed immediately.



Then the memory expansions were "filled up" by loading sample-based soundsets. Basically, the loading of the sets including the installation of the Waveforms to the flash boards was flawless in numerous test series.

Limitations are only set by the operating system of the instruments. The number of addressable Waveforms and Samples is limited as follows:

- maximum number of Waveforms = 2,048
- maximum number of Samples (Keybanks) per Waveform = 128, but...
- maximum total number of Samples: 8,192

If one of these limits is reached, the error message "Sample Memory Full" appears, despite the fact that the physical memory is not exhausted. In particular, by loading soundsets, which contain a high number of short single Samples, the limits are reached sooner. Soundlibraries with large Samples, however, such as for pianos or electric pianos, which were recorded with a long sustain phase, are very well suited to take advantage of the expanded capacity.

The above restrictions apply to the MOTIF XF and the MOXF alike. As a result, for example, two FMC-07 in the MOTIF XF with an average mix of soundsets are less effectively used as a single one in the MOXF, which is equipped with only one integrated slot.

Especially for users who work with large Samples such as long audio loops or complete audio tracks, the MUTEK 2 GB modules can offer completely new possibilities. A regular stereo file in 44.1 kHz/16 bits is about 10.1 MB per minute. Thus in this format a good three hours of audio material fit on one FMC-07!

In summary, I would like to point out that this is not an official test by Yamaha. Whether there will be an official opinion from Yamaha concerning these extensions remains to be seen. It is also unknown whether Yamaha will fulfill the desire of many users to expand the number of addressable Waveforms and Samples with a firmware update.

More information on the FMC series flash modules can be found on the manufacturer's website

www.mutek-net.com

Hans-Peter Henkel



MOXF USING YOUR OWN SAMPLES

In addition to the two-part MOXF Flash Memory Guide, that was published in the Music Production Guides 04/2013 and 02/2014, I will now show you how to work with your own User Samples in the MOXF.

But first let me explain the terms that are used in this context. The following is an extract from the Flash Memory Guide Part 1.

In the MOXF Samples are always integrated in Waveforms. A Waveform is a group of Keybanks. A Waveform contains at least one and a maximum of 128 Keybanks. A Keybank is a keyboard and velocity zone to which a Sample is assigned. This creates what is known as a Multisample in common parlance. However, these terms are merely background information. Subsequently, only the terms Sample and Waveform will be used.

Unlike the instruments of the MOTIF series, the MOXF has no parameter set to the extensive processing of Samples and Waveforms. Nevertheless, you are not limited to use only ready soundsets with sample content. For example, for special sound effects, drum Samples as a supplement in User Drum-Kits or Drum Loops a further processing in the instrument is seldomly required.

A deep introduction to the sampling technology is not necessary at this point, I just want to give some preliminary informations, which are helpful for the further course. It's one of the more important criteria for the distinction of Samples, whether it is a One-Shot Sample or a Loop.

A One-Shot Sample is essentially a normal audio recording that is played back once and must be re-started for another playback.

In Sample Loops two markers are placed in the audio recording, between which the playback is repeated in a loop as soon as the end of the Waveform is reached.

ONE-SHOT FIRST, PLEASE...

So let's say you want to prepend a particular sound effect to the intro of a song. How can you do that? First, find an unneeded Voice from the User Voices. Initialize that Voice.

- Press [JOB] > [F1] INIT > [ENTER] (2x) - then press [EXIT]

Store the initialized Voice.

- Press [STORE] > [F1] INIT > [ENTER] (2x)

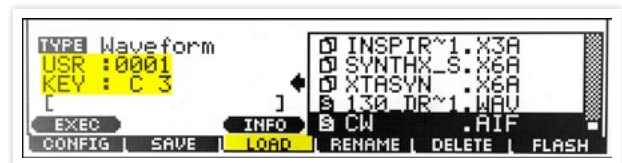
Copy the desired sound effect in WAV or AIFF format (44.1 kHz, 16 bit) on a USB stick and connect the stick with the MOXF.

Here are direct links to the mentioned MPG editions - in case you missed them or would like to read again:

http://www.easysounds.eu/MusicProductionGuide_2013_04_EN.pdf

http://www.easysounds.eu/MusicProductionGuide_2014_02_EN.pdf

- Press [FILE]
- Use the dial to change the "TYPE" from "All" to "Waveform"
- Use the cursor [▶] to navigate to the selection and locate your Sample
- Press [SF1] EXEC



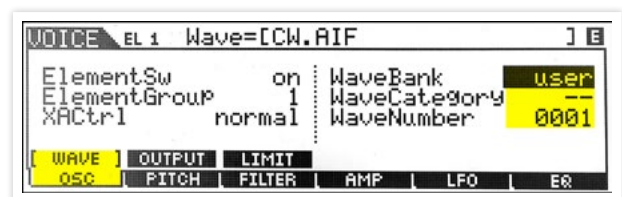
By doing so you get option on the left of the display to assign the new Waveform to a dedicated User slot 1 - 2048 and to set its root key. This is the note from which the Sample can be triggered (by default it's C3).

- Make the desired settings and press [SF1] EXEC again

The Sample will be installed on the Flash Memory Board.

Go to your initialized Voice.

- Press [EDIT]
- Change from [COMMON] to Element 1 - button [1]



- In the "OSC" / "WAVE" display use the cursor [▶] to navigate to "Wave Bank"
- Change the entry "pre" to "user" using the [INC] button
- Use the dial or the [INC] / [DEC] buttons to select your new Sample

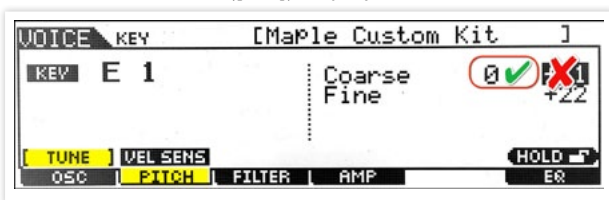
Play C3 on the keyboard to play your Sample immediately. If you want to store your Voice, use the procedure described above.

A simple Sample, with a Waveform generated in this way, can only be assigned to a single key, and then can not be detuned. If you change the coarse tuning (Pitch Coarse), the Sample will only be played on a different key (Transpose). I will come back again to the loading of Waveforms in the further course.

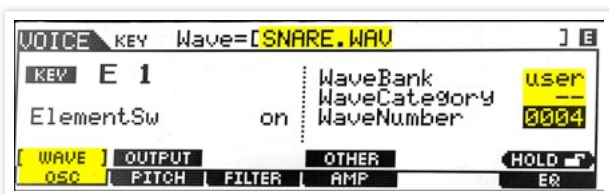
„PIMP MY DRUMS“

The inclusion of a Sample in a User Drum Kit is similarly simple. The loading process is not different from the procedure described above. For example, select a User Drum Kit in which you want to replace an existing snare drum from the ROM-Waves by one of your Samples.

- Press [EDIT]
- Change from [COMMON] to Element 1 - button [1]
- Play the key to which you want to assign the Sample
- If necessary adjust "Coarse" to the value "0" in the "PITCH" / "TUNE" ([SF1]) display



- Press [F1] OSC to change to the Oscillator section of the selected Drum Voice
- Use the dial or the [INC] / [DEC] buttons to select your new Sample (for a better overview not only the WaveNumber, but the name of the Samples is displayed in the top of the display, too)



- Store your Drum Kit with the settings

WAVES IN FORM

These examples only contained a single Sample. The MOXF is also able to load a complete Waveform. A Waveform, as described above, can contain one or more so-called Keybanks, to which the Samples are assigned.

If you are willing to deal with the terms in this context, I suggest you to take a look at the Yamaha Synth Guide.

http://www.easysounds.eu/YamahaSynthGuide_EN.pdf

A detailed description of the relationships is given in Chapter 3 "MOTIF Terminology" on page 14.

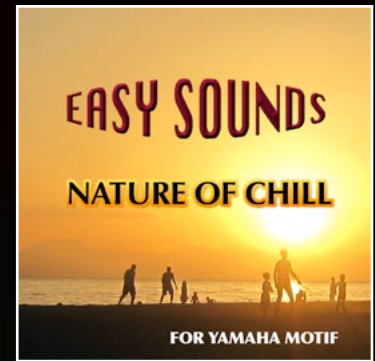
If you load a Waveform that contains Keybanks, Samples and additional information, such as loop points etc., it can be much more edited with the Voice parameters as a single Sample. For example, if you add such a Waveform in your initialized Voice, the assignment of each Sample to the keyboard is transferred from the information of the Waveform. This Waveform can be used just like the internal ROM-Waveforms. Also drum loops run "smoother" when they are well prepared. Again, the John Melas Waveform Editor is seriously recommended for all those who are interested in the subject of Samples. And I have permission to tell one thing: In the summer of this year there will be an update that supports the import of Voices and Waveforms from files from the MOTIF XS, MOTIF XF, and MOXF (X0A, X3A, X6A...)

CONCLUSION

I hope I could help you with the extended use of your installed Flash Boards. Almost mandatory at this point I would like to point out that you should regularly create backups of your important data. In particular, before working with Waveforms / Samples it is practically mandatory to save an ALL file including Waveforms as a backup that you can access to if needed.

Based on the Yamaha slogan I now wish you to have "Inspiration In A Flash".

Your Hans-Peter Henkel

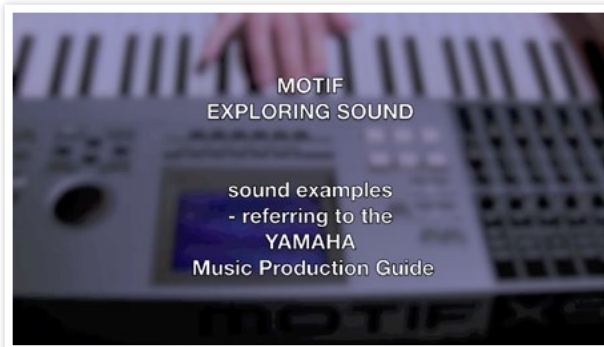


MOTIF XSIXF/MOXF EXPLORING SOUND: NATURE OF CHILL PT. 2

WORKSHOP SERIES FOR YAMAHA MOTIF USERS

The first part of this workshop was all about different types of sounds that play an important role in chill-out and related musical styles. Now, with this knowledge there are only few things easier than taking a sound pad, rythmical arpeggios, and a drum beat to arrange a song. Read this workshop to learn how to use the content of „Nature of Chill“ to easily produce decent tracks.

By using two different song sketches – which can also be experienced as a video on YouTube – this second part of the workshop about the „Nature of Chill“ soundset will show you how to use MIDI to control single Voices, how to record the MOTIF’s audio output, and how to arrange the recorded audio files in a DAW. Of course, you could also use the built-in sequencer of the MOTIF with its Performance Recording function or its Song Job „Copy Performance To Song“. But since most users use a computer für their recording purposes, we decided to describe the production process with a DAW.



MOTIF and a DAW: This video from the Motifnews YouTube channel shows the sounds and other elements of a chill-out track



The MIDI parts for the MOTIF should remain in the arrange window of the DAW alongside the recorded audio data

SONG EXAMPLES – HOW TO START WITH „NATURE OF CHILL“

Like in the fifth part of this workshop series (which was about the „Evolving Soundscape“ soundset) we'll use a DAW for MIDI sequencing and audio recording. Use whatever DAW you have available – Cubase, Logic, or any other software (like for instance the free audio editor Audacity 2.0). Establish a MIDI connection between your MOTIF and your PC for both ways (In and Out). It is important to disconnect the MOTIF's tone generator from its keyboard. This is done by using the „MIDI Local off“ function: Press the Utility button, then hit F5 (Control) and SF2 (MIDI). The section Switch contains the parameter „Local Control“, which you should now set to „off“. By doing so you avoid to double trigger the internal sounds of the MOTIF which results in a „flanging effect“.

The stereo output of the MOTIF will be recorded with the audio interface of your computer. We'll follow a simple concept: We'll record single phrases, grooves, or parts of around four to eight bars and use those „snippets“ to arrange the full production. In most cases it is better to do the mixdown in the DAW. So you should de-activate (bypass) the System Effects Reverb and Delay in the MOTIF and replace them by plug-ins in the DAW. Doing so gives you more freedom in the final mix. On the MOTIF you should have an eye on the Arpeggiator Tempo (hit F4 from the Play menu) and change it accordingly to the song's tempo. The same applies to the LFO which definitely should follow the song tempo.

EXAMPLE SONG 01: „CHILL TRADITIONAL“ PIANO, FRETLESS-BASS, E-GUITAR

Nice song layouts are quickly designed on the basis of the many Performances of "Nature of Chill". Try the Performance 030 "Vari Chill AF 1 & 2 MW" and keep its tempo of 60 bpm.

We'll use only two parts from this Performance: The drum kit and the electric piano. Use the volume sliders 2 and 3 to completely fade out (Level = 0) the bass (Part 2 = "Deep 'n Dry") and the pad (Part 3 = Mystic Angels). You should try an economical arrangement, which means that the accompaniment or the triggering of the drum loop and electric piano is done with only one note. Harmoniously only little happens here: An simple eight-bar chord progression with four bars Bb minor and four bars Eb minor.

The Performance 030 provides two options for sound shaping: The MW wheel allows to increase the reverb depth for the drums, which is particularly noticeable in the snare. The electric piano part becomes more brilliant with a digital bell sound by hitting the AF1 key. For tonal variations within the track, it is useful to make different recordings of the accompaniment (with modified sounds etc.).

In the next step we'll work out the piano part. A beautiful Voice is quickly found with USR1: 002 (A02) "Choiry Grand AF1". First of all it is important to bring the Arpeggiator from 90 to 60 bpm. Only then the tempo delay is in sync with the tempo. It's even better to disable the delay and reverb effects (→ Effect

Bypass System) and later replace these two effects with Plug-ins when mixing in the DAW.

The piano Voice can be played dynamically and quite brilliantly over many octaves. But please do not get tempted to play too fast, for runs with sixteenth notes will blur with the delay effects, and the choir pad, which can be modulated effectively in long sustained chords with the modulation wheel, won't be audible. Anyway, in chill out a smooth, stable part is asked for. For this purpose, please play a rhythmic motif with chords that is varied with a few fills and single notes. As I said, use the mod wheel to breathe in some life and take advantage of this certain piano Voice.



All audio tracks of the first arrangement at a glance.

Special feature: The drum track will be faded in

We'll then replace the bass that we faded out from Performance 30 with a different Voice. For a more traditional sounding rhythm backing (and matching the acoustic piano) the fretless bass from Voice USR 1: 033 (C01) "Time And Fret Less" is recommended. We have all musical freedom with that bass, for example, we don't need to always play the root note, but can switch to a fifth or a third. For recording, turn off the delay effect (→ Effect Bypass System), so you have more options in the mixing.

Now the traditional arrangement will get a little blues feel: The Arp-Voice with its single-note electric guitar (USR 1: 115 Anisette) and the dirty electric piano with a lot of phaser effect (USR 1: 072 Lounge Tramp) - but without arpeggio - will provide the track with a somewhat earthy sound.

Still missing is a clear brilliant voice. For this lead part, we'll use USR 1: 037 (C05) "Chilly Lead 1" and make the melody match the rhythm of the piano part.

In the course of the arranging process it's all about trying filling material and creating rhythmic soundscapes. A good tip is the Voice USR 1: 008 (A08) "Limber". Although it is inconspicuous at first, it does its job well within the arrangement. It squeezes itself unobtrusively between piano, electric piano, and bass. In terms of harmonics a few options are allowed, such as adding a minor seventh.

EXAMPLE SONG 02: „ELECTRONIC CHILL“ – SWEEPS, SINE LEAD, EFFECTED DRUMS

The sound selection for the second sample arrangement with a tempo of 80 bpm is clearly more electronic. First and foremost it's about layers of several tracks for the four-bar rhythmic-harmonic backing, which is based on the two chords in C minor and B-flat minor.

A ticking Arpeggiator pattern is first. For this purpose, we choose the Voice USR 1: 059 (D11) "Sleep Mode" and reduce the Arp tempo to 80 bpm. Using the same chords a second Arpeggiator Voice is triggered: USR 1: 055 (D07) "Big Star Comp". For variations within the arrangement, we record the track once with Arp-Pattern 2 and then again with Arp-Pattern 4 of this Voice. Although both Voices already are quite fat, a third track is nice, refining it all with a sweep pad. A dark pad, that can be filter-modulated by the mod wheel, gives a calm and strong atmosphere. Among the many synth pads of "Nature of Chill" the Voice USR 1: 089 (G02) "Chill Swell 2" fits for this task.



The second example ("Electronic Chill") at a glance. A mere six tracks are sufficient for the arrangement

For the drums, we won't use an Arp pattern, but instead record a beat that matches the arpeggios: Select UDR: 002 "Chill out Kit 2" and disable the Arpeggiator. As suggested in the last part of this workshop, the drum kit can be varied creatively by using the effects. Try other effect types for Insert A and the Reverb jazz up the drum's sound - anything goes! However, the kick drum should remain free of (reverb) effects. You can do this by setting "Ins Effect Output = thru" on the Oscillator page of the appropriate drum notes.

Finally, this chill track is set to receive a nice dreamy theme. Because the background is already swirled with the pad and the Arp patterns, a simple, powerful sound is the best choice: USR 1: 039 (C07) "Tweety" is a sine-like sound, which has a beautiful portamento effect inbetween two melody notes when it is played legato. The cool spherical sound of USR 1: 013 (A13) "Polar Bear Cafe" playfully wraps around the theme.

So far for a few suggestions on how to combine individual Voices from "Nature of Chill" and develop a song arrangement. Please watch the corresponding video on the YouTube channel. Furthermore, the soundset for your Yamaha MOTIF / MOXF is still waiting for you with many beautiful surprises. So let yourself be inspired!

Matthias Sauer

www.app-sound.com

LINKS

Video:

<http://www.youtube.com/user/motifnews/videos>

Sound product:

www.easysounds.de

„Nature of Chill“ for
Yamaha MOTIF inspires
with a multitude of
Performances and
quaint sounds





On the last page of the Music Production Guide a link can be found to download a zip-file containing all previous editions (in the Box „Music Production Guide History“).

In addition, we now offer all readers the opportunity to access all previous issues online. So the Guides archive is available from everywhere you've got connection to the internet.

After entering the access data, simply click on the relevant issue in order to open it for reading.

The link to the German editions:

http://easysounds.macbay.de/MusicProductionGuides_DE

The link to the English editions:

http://easysounds.macbay.de/MusicProductionGuides_EN

Login:

Name: *musicpro*

Password: *guide*

Name	Last modified	Size	Description
Parent Directory	-	-	-
MusicProductionGuide_2011_03_EN.pdf	26-May-2011 09:16	3.1M	
MusicProductionGuide_2011_04_EN.pdf	26-May-2011 09:08	4.6M	
MusicProductionGuide_2011_05_EN.pdf	26-Jul-2011 07:36	4.3M	
MusicProductionGuide_2011_06_EN.pdf	26-Jul-2011 07:33	4.4M	
MusicProductionGuide_2011_07_EN.pdf	11-Nov-2011 08:56	4.7M	
MusicProductionGuide_2011_08_EN.pdf	11-Nov-2011 08:55	4.5M	
MusicProductionGuide_2011_09_EN.pdf	07-Dec-2011 20:46	5.9M	
MusicProductionGuide_2011_10_EN.pdf	28-Dec-2011 18:41	6.3M	
MusicProductionGuide_2012_01_EN.pdf	15-Feb-2012 22:16	5.6M	
MusicProductionGuide_2012_02_EN.pdf	24-Jun-2012 19:13	6.0M	
MusicProductionGuide_2012_03_EN.pdf	18-Sep-2012 18:52	4.5M	
MusicProductionGuide_2012_04_EN.pdf	14-Nov-2012 09:00	4.9M	
MusicProductionGuide_2012_05_EN.pdf	14-Nov-2012 08:59	4.4M	
MusicProductionGuide_2013_01_EN.pdf	23-May-2013 21:22	6.0M	
MusicProductionGuide_2013_02_EN.pdf	13-Nov-2013 14:11	5.6M	
MusicProductionGuide_2013_03_EN.pdf	13-Nov-2013 14:11	5.0M	
MusicProductionGuide_2013_04_EN.pdf	24-Dec-2013 16:03	6.2M	
MusicProductionGuide_2014_01_EN.pdf	27-Jan-2014 14:10	6.7M	



YAMAHA-GOODIE: MX49/MX61 PERFORMANCE KIT

With the „Performance Kit“ there is free additional, yet high-quality content available for MX49/MX61 users. It was produced by Yamaha Music Europe in cooperation with EASY SOUNDS and consists of the following components:

- *MX49/MX61 Performance Library*
- *WAV pool with about 200 WAV files totaling 93 MB (drum loops, vocal and vocoder phrases, sound effects, and atmospheres)*
- *MIDI loops & arpeggios*

To register for this free goodie simply write an e-mail with the keyword „MX49/MX61 Performance Kit“ to:

mxgoodies@easysounds.de

As soon as the registration process is complete you will receive an e-mail from EASY SOUNDS with a password and a link where the file can be downloaded.

MOX „SOUND & GROOVE KIT“



The free MOX „Sound & Groove Kit“ is available for all registered users of the MOX.

This soundset includes an „Electronic & Dance“ soundlibrary featuring 128 Voices - a selection of the best synth-sounds from the EASY SOUNDS soundlibraries for the MOTIF series.

In addition, the package includes a WAV loop pool with drums, synths, vocals, sound effects, and atmospheres for Cubase AI and other DAWs.

Registration for this goodie is done by writing an informal e-mail with the keyword „MOX“ to this e-mail address:

moxgoodies@easysounds.de

EASY SOUNDS SOUNDSETS FOR MOX

The popular MOTIF soundlibrary from EASY SOUNDS is also available in MOX format.

The following products are available:

- Yamaha MOX „Live Instruments“
- Yamaha MOX „Nature of Chill“
- Yamaha MOX „Dance Pro“
- Yamaha MOX „Phat Analog II“
- Yamaha MOX „Xtasyn“
- Yamaha MOX „Synth Xtreme“
- Yamaha MOX „Magical Pads“
- Yamaha MOX „Stage & Studio“
- Yamaha MOX „Phat Analog“
- Yamaha MOX „Organ Session“
- Yamaha MOX „Hypnotic Stepz“
- Yamaha MOX „Chill Xperience“
- Yamaha MOX „Mystic Spheres“
- Yamaha MOX „Dance Xpanded“

Visit the EASY SOUNDS online shop:

www.easysounds.de

YAMAHA CP 1 ARTIST PERFORMANCES

A free soundset in excellent quality is available for every CP1 user.

A total of 64 Performances were programmed by renowned sound designers Johannes Waehneltdt and Peter Jung on behalf of Yamaha Music Europe.

The soundset can be requested by sending an e-mail to

cp1goodies@easysounds.de

containing the keyword „CP1 Artist“.

You will receive an e-mail from EASY SOUNDS containing a link where the file can be downloaded.



MOTIF XF FLASH MEMORY CONTENT



Yamaha is working with third party software vendors to offer an extensive amount of free and optional Flash Memory content for registered MOTIF XF users.

The flash memory content package „Inspiration In A Flash“ make a perfect first stock for a sample-library of up to 2 GB for the non-volatile Flash Memory of the MOTIF XF. This content package contains three new User Voice Banks, 353 User Waveforms, 458 MB of Samples and 12 User Drum Kits. It focusses on the sound categories piano, organ, brass & reeds, pads, synths, oriental instruments and drums.

These Voice Banks can be individually loaded into the volatile SDRAM of the MOTIF XF, if no Flash Memory Module is installed.

The „Symphonic Orchestra Library“ features 128 User Voices, 34 User Waveforms and 336 MB Samples (979 Keybanks).

The orchestra library produced by Prof. Dr. Peter Jung (Duisburg-Essen, Germany) is based on recordings that were created over the past five years with the participation of two well-known Central European symphony orchestras.

The recorded sounds are very lively and authentic. Some feature delicate impressions of „disturbances“ that are typical for strings, such as the sound of slightly hitting the instrument body with the bow. All recordings were digitally processed on PCs, collaborating with well-known sound designers.

In addition to the orchestra sounds the Voice bank also contains sounds of categories like Electric Organ, Pipe Organ, Acoustic Piano, and Electric Piano.

To be able to load the complete All-file a Flash Expansion Memory Module (512 MB or 1 GB) is required. Single Voices can also be loaded into the SDRAM memory of the MOTIF XF (volatile sample memory).

This free content for the MOTIF XF can be requested by sending an e-mail containing the keywords „MOTIF XF Inspiration & Symphonic“ to:

xfgoodies@easysounds.de

The MOTIF XF user will receive an e-mail from EASY SOUNDS with a password and a link where the file can be downloaded.

MOTIF XS: EUROPEAN LOYALTY PROGRAM AND ORIENTAL SOUNDSET

The „European Loyalty Program“ offers MOTIF XS users free additional but nonetheless high-class content.

It is mainly a premium Voice and Sample library produced by EASY SOUNDS in collaboration with Yamaha Music Europe which contains the following:

- *The 3-layers Yamaha S700 stereo piano (32 MB compressed)*
- *„Sweet Voices“ and choir and scatvoices from the Yamaha Tyros*
- *Best-of compilations of the optional soundsets from EASY SOUNDS*
- *A WAV pool containing 200 WAV files with 93 MB in total*

The MOTIF XS soundset „Oriental Instruments & Percussion“ was produced by turkish musicians and contains the following:

- *36 Performances*
- *128 Voices*
- *9 User Drum Voices*
- *113 User Waveforms / 84 MB Samples of oriental instruments*
- *6 Turkish Authentic Micro Tunings*

„Oriental Instruments“ is developed for the use in both traditional and modern turkish music and is based on authentic samples of oriental musical instruments. Nonetheless these special oriental instruments can be used in music styles like pop, world, chill out, ambient and whatever you can imagine.

To register for the loyalty program and the oriental soundset simply write an e-mail with the keyword „MOTIF XS Goodies“ to:

sxgoodies@easysound.de

As soon as the registration process is complete, the MOTIF XS user will receive an e-mail from EASY SOUNDS with a password and a link where the file can be downloaded.

S90 XS / S70 XS: SOUNDPACKAGE

A free „Soundpackage“ with additional high-class content is available for S90 XS / S70 XS users.

This Soundpackage is produced by EASY SOUNDS under contract to Yamaha Music Europe and contains the following:

- Soundset „Pop & Dance“ - 128 professional Voices from the EASY SOUNDS library
- Soundset „Vocoder Dreamz“ containing 40 VocoderVoices
- A WAVpool containing 200 WAV files with a total size of 93 MB

This free soundpackage can be requested by sending an e-mail containing the keyword „S90 XS / S70 XS Soundpackage“ to:

s90xsgoodies@easysounds.de

You will receive an e-mail from EASY SOUNDS with a password and a link where the file can be downloaded.

MOTIF-RACK XS: SOUND & INFOPACKAGE

MOTIF-RACK XS users can obtain the free „Sound & Infopackage“ that’s produced by EASY SOUNDS under contract to Yamaha Music Europe.

The software package contains a Soundset (128 Voices), a WAV pool with 200 loops and audiophrases, a demo song, and a comprehensive guide plus tips & tricks.

This free soundpackage can be requested by sending an e-mail containing the keyword „MOTIF-RACK XS Sound & Infopackage“ to:

mxrgoodies@easysound.de

You will receive an e-mail from EASY SOUNDS with a password and a link where the file can be downloaded.

S90 ES, MOTIF-RACK ES, MO6/MO8: SOUND & INFOPACKAGE

Users of the MO6 / MO8, S90 ES, and MOTIF-RACK ES can obtain a free Sound & Infopackage that's produced by EASY SOUNDS under contract to Yamaha Music Europe.

This includes the soundset „Pop Xpanded“ with 192 professional live- and arpeggio-Voices. Furthermore a comprehensive documentation and other useful tips & tricks are included.

This free soundpackage can be requested by sending an e-mail containing the keyword „Pop Xpanded“ to:

popxpanded@easysound.de

You will receive an e-mail from EASY SOUNDS with a password and a link where the file can be downloaded.

TENORI-ON: EUROPEAN VOICE & SAMPLEBANK

Yamaha Music Europe and EASY SOUNDS provide their free soundlibrary „European Voice & Samplebank“ to all Tenori-On users.

The downloadable file (48 MB) contains the following:

- 18 Tenori-On User Voices (*Samplings*)
- 4 Tenori-On Demos (*AllBlock-Files*)
- 268 Samples in WAV-Format (*19 MB*)
- *Comprehensive PDF documentation*

This free sound library can be requested by sending an e-mail containing the keyword „Tenori-On European“ to:

tenorion@easysound.de

You will receive an e-mail from EASY SOUNDS with a password and a link where the file can be downloaded.

FREE DRUM KITS FOR DTX900 & DTXTREMEIII

Yamaha offers free content for DTX900K, DTX950K, and DTXTREMEIII.

There are five content packages available for download:

- *Extra Content 1 - Jazz Kit (4 Drum Kits)*
- *Extra Content 2 - Rock Kit (13 Drum Kits)*
- *Extra Content 3 - Electronic Kit (15 Drum Kits)*
- *Extra Content 4 - Vintage Kit (6 Drum Kits)*
- *Extra Content 5 - Oak Kit (6 Drum Kits)*

Altogether there are 44 Drum Kits (containing 150 MB samples) available. For more information and the download links visit

<http://de.yamaha.com/de/support/>

Go to the Downloads / Driver and Software section and enter the name of your drum kit model.

OCEAN WAY DRUMS DTXPANSION KIT

These three Drum Kits have been produced by Yamaha's sound designer Dave Polich and are based on the sample library from Ocean Way (Sonic Reality).

The Drum Kits feature a very complex programming containing multiple velocity layers. You can download the file at:

<http://www.dtxperience.com/dtxpansion.php>

FREE DRUM KITS FOR THE DTX-MULTI 12

Yamaha provides 25 high quality Drum Kits (75 MB) for the DTX-MULTI 12 for free download.

It is the same content that has been available for some time now for DTX900K, DTX950K, and DTXTREMEIII.

Here's an overview of the available Kits, which are divided into two files:

File 1 = Acoustic Kits

- *Jazz Maple (5 variations)*
- *Oak X Single (5 variations)*
- *Vintage (5 variations)*
- *Rock Single (5 variations)*

File 2 = Electronic Kits

- *ClasscDance*
- *Classic RX*
- *Drum'n'Bass*
- *HipHop90bpm*
- *House 128bpm*

More information and download links can be found here:

<http://download.yamaha.com>

First select your country and then enter DTX-MULTI12 into the search form.



DTX-MULTI 12 SOUNDSET: „ORIENTAL PERCUSSION“

The DTX Electronic Percussion Pad MULTI-12 uses many of the high-end features and sounds from the DTX and MOTIF series and provides an optimum tool for live drumming, productions or rehearsals.

With over 1,200 high-class sounds - including newly-developed drum, percussion and keyboard sounds - the DTX-12 MULTI enriches any musical situation. Up to 200 User Sets can be programmed and added with effects to get ready for every conceivable musical style with the best sounds around. In addition, the large 64MB Flash-ROM Wave-Memory can be filled with additional samples which then can be assigned to the Pads.

Now the soundset „Oriental Percussion“ for the DTX-MULTI 12 is available for registered users. It is provided by EASY SOUNDS on behalf of Yamaha Music Europe - free of charge.

The download package includes the following:

- 50 Patterns
- 24 Kits
- 132 User Waves (18 MB Samples)

The soundset has been designed primarily for traditional and modern Turkish music. It's based on authentic samples of oriental percussion instruments.

The oriental instruments are however well suited for use in other music styles such as Pop, World, Chill Out, Ambient, etc.

„Oriental Percussion“ was programmed by the Turkish musician and producer Mert Topel.

Since 1990 Mert Topel is working as a musician with nationally and internationally known pop and rock stars such as Tarkan (1993-2008) and many others. Mert recorded several albums as a producer of jazz, fusion, rock bands, and singers like Kirac, Mor ve Otesi, Gülden Goksen, Grizu etc. He also has his own jazz-rock band „Fenomen“, which published its first album in 2006 - with very good response from jazz lovers. Another project is a collaboration with Alper Maral in the production of an electro-acoustic-oriented album called „The Voltage Control Project“, which appeared in 2010.

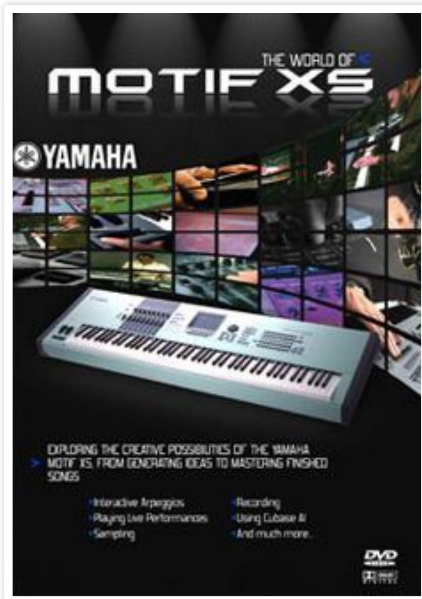
The DTX-12 MULTI Patterns produced by Mert Topel should inspire the musician in the first place and serve as basis for his own music productions.

This free soundset can be requested by sending an e-mail containing the keyword „DTX-M12 Oriental“ to:

dtxmulti12@easysounds.de

The user will receive an e-mail from EASY SOUNDS with a password and a link where the file can be downloaded.

FREE TUTORIAL DVD FOR MOTIF XS / XF USERS



The free tutorial DVD „The World of MOTIF XS“ (English language) is available for all registered european MOTIF XS and MOTIF XF users.

The DVD procures comprehensive instructions on how to use a MOTIF XS in a music production environment. The running time of over 3 hours covers deep insights in topics like interactive Arpeggios, live performances, sampling, recording sessions, Cubase AI and much more.

Although the instructions refer to the MOTIF XS, this DVD is of interest for MOTIF XF users, because the XS' operation is substantially the same concept.

To request this DVD simply write an e-mail to:

musicproduction@yamaha.de

Please give your name, address, serial number of your MOTIF XS or MOTIF XF, and the keyword „The World of MOTIF XS“ - even if you already are a registered MOTIF XS user.

Important note: This DVD can not be shipped outside Europe!

CUBASE AI TUTORIAL VIDEOS FOR REGISTERED USERS

Thanks to the cooperation between Yamaha and Steinberg most of the recent instruments and mixing desks from the Yamaha Music Production range have the DAW software Cubase AI included – for those who do not own a DAW software yet this is one good reason more to buy from Yamaha. Even more Cubase AI is a music production tool with functions which were exclusive for high-end studios not very long time ago.

Even better: European customers buying a Yamaha Music Production instrument with included Cubase AI software are qualified to request a free English language tutorial CD from ASK Video containing 23 videos on how to use Cubase AI4.

The CD is English language only and only available as long stocks last. So better be quick – request your CD by sending an e-mail containing the serial number of your Yamaha instrument and your name and address to:

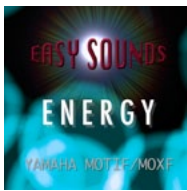
musicproduction@yamaha.de

MOTIF XS users can order this CD in combination with the tutorial DVD „The World of MOTIF XS“.

Important note: This CD-ROM can not be shipped outside Europe!

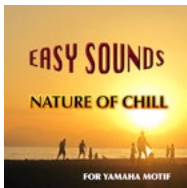


OPTIONAL SOUNDSETS FOR MOTIF / MOXF / MOX / MO AND S SERIES



"ENERGY"

Sounds for electronic, modern pop, dance, dubstep, electro house, and related styles of music. With Energy important elements of the current electronic music are finally available for the MOTIF. Rapid arpeggios, wobbling synths, electric bass, and drum beats in variable tempos are essential features of this set



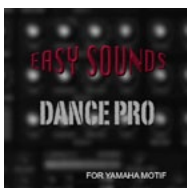
"NATURE OF CHILL"

Exquisite Voices and Performances for chill out, lounge, ambient, electronic, and related musical styles of popular music. In addition to broad, effective and atmospheric synthesizer sounds also remakes of traditional instrument sounds from the fields of piano, electric piano and guitar are offered



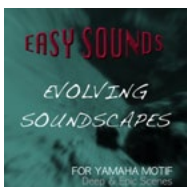
"LIVE INSTRUMENTS"

Voice and sound collection with high-quality sounds of the categories piano, electric piano, clavinet, organ, Mellotron, strings, brass section, synth. Popular selection of instruments that are always required by keyboard players in bands. In addition, the sound library contains punchy drum sounds and arpeggio Performances that offer inspiration and ample opportunities for improvisation with accompaniment and idea material for productions



"DANCE PRO"

Top-current, powerful, and assertive dance Voices, programmed by top international sound designers. A special feature are the audio / MIDI arrangements, where synth Voices and drum loops are combined. These arrangements can be used as a starting point for your own dance tracks



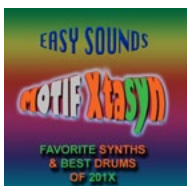
"EVOLVING SOUNDSCAPES"

Inspiring collection of atmospheric and dramatic Voices and Performances on the basis of a newly created sample library. High-quality FX, synth and drum samples, pads, and musical effects with impressive atmosphere and motion-rich sound structures, spherical and spectacular sound effects for cinematic and ambient productions



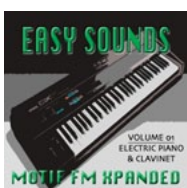
"PHAT ANALOG II"

Timeless Voice and sound collection with an emulation of popular sounds from Oberheim synthesizers (OBX, OB8, Matrix12 ...) and the Jupiter-8. The ultimate analog extension for the MOTIF! Polyphonic synth sounds like synthbrass, synthstrings, pads, and synthcomps are the main content. However, leadsynths for synthpop, sequencer, arpeggio, and FX sounds can also be found in this sound library



"XTASYN"

Up-to-date synth and drum sounds for dance, trance, pop, and electronic. Phat leads & synthcomps, pads, FX. Special attack Waveforms for punchy sounds



"FM XPANDED – VOL. 1: ELECTRIC PIANO & CLAVINET"

Sample-based FM sounds with very high dynamic and authenticity, which are heavily based on classic DX7 sounds, but also offer new and innovative creations



„PHAT ANALOG“

Synthleads, pads & more! Timeless Voice and sample library with a Minimoog emulation (Leadsynths) and JP-8 sounds. The ultimate analogue extension!



„CHILL XPERIENCE“

Soundset for Chill Out, Lounge, Ambient, New Age, Electronic, and related genres. These sounds offer a high level of musical inspiration



„DRUM PERFORMER“

Lavishly produced 'Real Drums' for extremely realistic sound; dry, fat and punchy. Extreme range of sounds achieved by different recording techniques



„STAGE & STUDIO“

The ultimate top 40 and live set! Contains the most important standard instruments and synth sounds for live musicians. Outstanding performance and power



„ORGAN SESSION“

This set is an impressive emulation of the legendary Hammond B3. Smacky organ sounds with concise key click and controllable percussion. Perfect for Rock, Pop and Jazz

GENERAL INFORMATION

The above soundsets are available for the following devices:

- MOTIF XF, MOXF, MOTIF XS, MOTIF-RACK XS, S90 XS / S70 XS, MOX, MOTIF ES, MOTIF-RACK ES, S90 ES, MO6, MO8.

- Some soundsets are not available in allen formats.

The most recent soundsets are offered primarily for MOTIF XF, MOXF, and MOTIF XS.

Each soundset contains 128 Voices. Depending on the device, additional content such as Performances, Samples, User Arpeggios, and WAV Loops are included..

Further details can be found on www.easysounds.de

Price per soundset = 35,- EUR

The soundsets are available from:

EASY SOUNDS – Peter Krischker

vertrieb@easysounds.de

http://www.easysounds.de

IMPRINT & FURTHER LINKS

IMPORTANT WEBSITES FOR MOTIF USERS

Official international Yamaha website for synthesizers including a comprehensive download section

<http://www.yamahasyth.com>

Official website of Yamaha Music Europe GmbH

<http://www.yamaha-europe.com>

American MOTIF support website including message board + KEYFAX webshop + „XSpand Your World“ downloads

<http://www.motifator.com/>

EASY SOUNDS website + webshop sounds and USB sticks for Yamaha synths

<http://www.easysounds.de>

John Melas MOTIF Site Editor softwares for the MOTIF series

<http://www.jmelas.gr/motif/>

MUSIC PRODUCTION GUIDE HISTORY

You can download all English editions already published as one single ZIP file using this link to the EASY SOUNDS website:

<http://www.easysounds.eu/NewsGuides.zip>

YAMAHA MUSIC PRODUCTION GUIDE

The official News Guide about the Yamaha Music Production product series and Computer Music Instruments

Published by

EASY SOUNDS

Peter Krischker

Am Langberg 97 A

D-21033 Hamburg

Telefon: +49 40 - 738 62 23

In cooperation with

Yamaha Music Europe GmbH

Siemensstraße 43

D-25462 Rellingen

Telefon: +49 41 01 - 30 30

e-mail: motifnews@easysound.de

The free Music Production Guide contains news, tips & tricks, software offers, and interviews on and around Yamaha synthesizers of the MOTIF series, S series, MO series, MM series, Tenori-On, and articles about recording, software, and Computer Music Instruments.

You can subscribe or unsubscribe to the free Music Production Guide by sending an informal e-mail to:

motifnews@easysound.de

CLARITY IN SOUND AND DESIGN



HS STUDIO MONITORS

NOW ALSO AVAILABLE IN A STUNNING WHITE FINISH



••• A great new look as pure as their sound: of course with the same features as the legendary black originals ••• 2-way bi-amped HS5 (70W), HS7 (95W) and HS8 (120W) studio reference monitors that are ideal for mixing and music production, delivering an exceptionally smooth, flat and – most importantly – accurate response ••• For more bottom end the HS monitors can be combined with the HS8S (150W) subwoofer •••

