

DOGGER BANK  
CREYKE BECK

PUBLIC  
November 2011

# Statement of Community Consultation (SoCC) Consultation Documents

<h1>Statement of Community Consultation (SoCC) Consultation Documents</h1>		
Document no. :	Contract no. (if applicable):	Project: Dogger Bank Creyke Beck
Classification: Public	Distribution: Public	
Expiry date (if applicable):	Status: Approved	
Date: 17 November 2011	Version no.: 1.0	
<b>Overview:</b> This document provides further information on the content of the Statement of Community Consultation (SoCC) and how the local community associated with Dogger Bank Creyke Beck was determined.		
Prepared by: Nikki Smith	Date: 17/11/2011	Signature: 
Approved by: Mark Thomas	Date: 17/11/2011	Signature / Approval meeting ref: 

## Contents

<b>4</b>	<b>Policy context</b>	<b>1</b>
<b>5</b>	<b>Project overview</b>	<b>3</b>
5.1	Offshore	5
5.2	Onshore	6
<b>6</b>	<b>The SoCC</b>	<b>7</b>
6.3	Scope of the SoCC	7
6.4	Consultation on the content of the SoCC	7
6.5	Publications proposed for advertising the SoCC	8
<b>7</b>	<b>Scope of the community consultation process</b>	<b>10</b>
7.3	Objectives	10
7.4	Phases of consultation	10
7.4.1	Phase One – The site selection process to date	10
7.4.2	Phase Two – Full details of the project	12
7.5	Defining ‘the vicinity’ of the project	12
7.5.2	The vicinity for the onshore works	15
7.5.3	The vicinity for the offshore works	16
7.5.4	Other technical or community organisations	17
7.5.5	Hard-to-reach groups	17
7.6	How we will consult	18
7.6.1	How we will consult - Phase One	18
7.6.2	How we will consult - Phase Two	18
7.6.3	Consideration of other promoters’ consultation exercises	19
7.6.4	Communication tools	19
<b>8</b>	<b>What we will do with the consultation</b>	<b>21</b>
<b>9</b>	<b>Consultation summary</b>	<b>22</b>
9.3	Summary of consultation activities in Phase One	22
9.4	Summary of consultation activities in Phase Two	22
<b>10</b>	<b>Further information</b>	<b>23</b>
	<b>Appendices</b>	<b>24</b>
	Appendix A: Statement of Community Consultation (SoCC)	24

## Table of Figures

Figure 1	Dogger Bank Project One Scoping Envelope .....	4
Figure 2	The proposed location for Dogger Bank Creyke Beck .....	5
Figure 3	Proposed location of the onshore infrastructure for Dogger Bank Creyke Beck.....	11
Figure 4	The Consultation Area for Phase One .....	14

## 4 Policy context

Forewind Ltd (Forewind) is promoting the Dogger Bank Creyke Beck offshore wind development. The development could comprise up to two offshore wind farm projects, each with a generating capacity of up to 1.4GW. Therefore, the development could have a total generating capacity of up to 2.8GW.

Offshore wind farms with a capacity over 100MW, are classified as Nationally Significant Infrastructure Projects (NSIPs) under Section 14 of the Planning Act 2008 and require a Development Consent Order (DCO) before they can be built. Under current legislation, Forewind must submit an application for a DCO to the Infrastructure Planning Commission (IPC). However, the Localism Bill, which is currently before Parliament, proposes to abolish the IPC and applications will then most likely be submitted to a new major infrastructure department of the Planning Inspectorate. It is expected that this legislation will come into effect in April 2012. Therefore, it is likely that Forewind will submit applications for DCOs to the IPC's successor – hereafter referred to as the "Examining Body".

Due to the scale of Dogger Bank Creyke Beck, Forewind may decide to submit either one application for a DCO for the entirety of the up to 2.8GW development, or two separate applications each for a DCO for an offshore wind farm with a generating capacity of up to 1.4GW. Each application will request consent to construct and operate both the offshore and onshore elements of that project.

The Planning Act places a statutory duty on Forewind to consult with the community in the vicinity of the projects and to consider the responses received. Forewind has decided to consult the community on the largest possible scale of Dogger Bank Creyke Beck, even though it may end up being the subject of two separate applications for DCOs. This approach is intended to provide clarity and to be transparent on the full scale of the development that may affect the local community in this area and to give stakeholders the option to provide their comments on both or either of the project proposals as they feel appropriate.

It is important that the local communities get involved in the consultation and make their views known, so that issues can be better understood and resolved where possible. The Statement of Community Consultation (SoCC) is a formal requirement of the Planning Act which sets out how the community will be consulted.

This document was originally produced to provide supporting information for East Riding of Yorkshire (ERoY) Council and Kingston upon Hull City Council (Hull City Council) during their formal review of Forewind's proposed SoCC, in accordance with Section 47(2) of the Planning Act. In line with guidance published by the Department for Communities and Local Government (DCLG), Forewind has also consulted the Marine Management Organisation (MMO) on the proposed content of the SoCC.

Therefore, this document comprised the 'Consultation Documents' defined under Section 47(3) and (4) of the Planning Act in relation to Forewind's duty to prepare a SoCC for the Dogger Bank Creyke Beck proposal.

This version of the Consultation Documents takes into account feedback from the Local Authorities and the MMO and has been made available to the public as a reference aid to provide further information on the content of the SoCC and also how the local community associated with the project was determined.

## 5 Project overview

In 2010, the development company Forewind was awarded the exclusive right to develop offshore wind farm projects at the Dogger Bank Zone through the third round of offshore wind farm leasing undertaken by The Crown Estate.

The Dogger Bank Zone is located within the UK's Renewable Energy Zone (REZ)<sup>1</sup>, and is between 125 and 290 kilometres off the east coast of Yorkshire. It extends over an area of approximately 8660 km<sup>2</sup> (approximately the same size as North Yorkshire) with its eastern most outer limit aligned to the UK continental shelf, as defined by the UK Hydrographic Office. The water depth ranges from 18–63 metres.

Forewind has committed to developing 9 Gigawatts (GW) of wind generation capacity at Dogger Bank but believes that the zone has the potential to accommodate up to 13GW, which if built to this capacity, would make it the largest offshore wind farm development in the world. To relieve the pressure on stakeholders and the supply chain, the zone will be developed in a series of up to 12 wind farms.

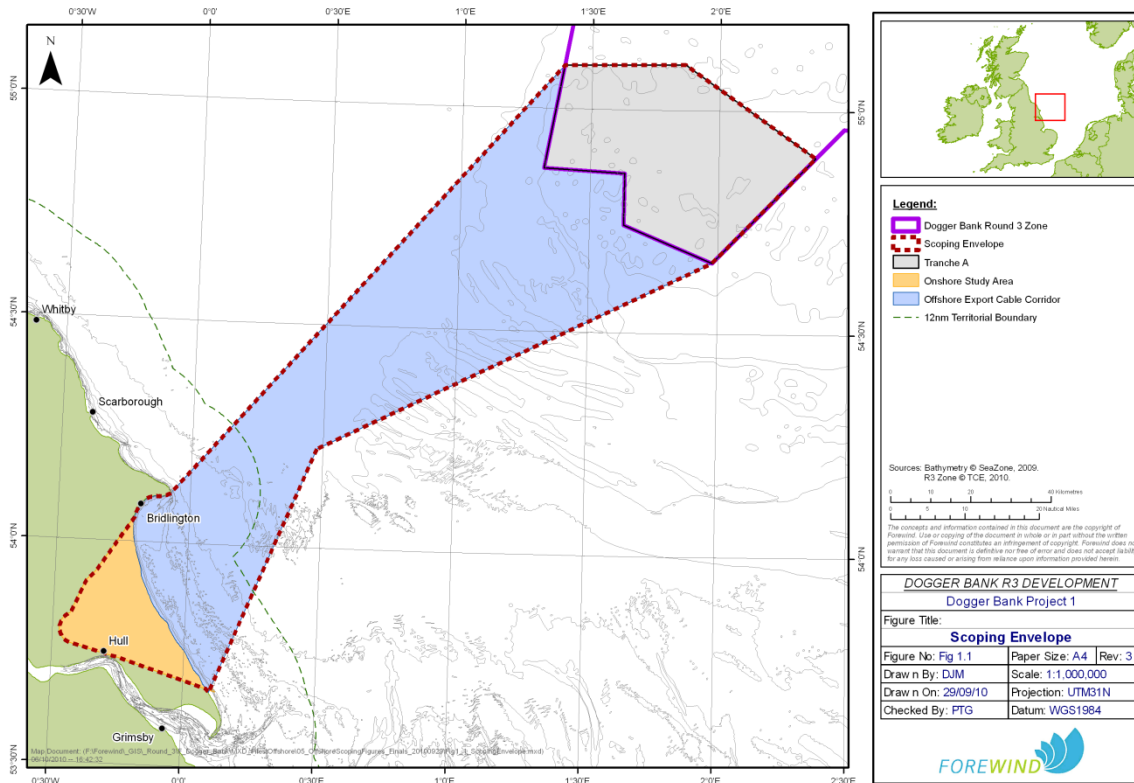
Forewind had previously identified Dogger Bank Project One which was an offshore wind farm with a generating capacity of up to 1.4GW. Dogger Bank Project One connected into the national grid at the Creyke Beck Substation near Cottingham in the East Riding of Yorkshire. Forewind is now proposing two projects each with a generating capacity of up to 1.4GW which would both connect into the Creyke Beck Substation. These are being developed together under the name of Dogger Bank Creyke Beck. The combined maximum generating capacity of Dogger Bank Creyke Beck would therefore be 2.8GW and as such, is a Nationally Significant Infrastructure Project (NSIP) as defined under the Planning Act.

These two wind farms will be presented to stakeholders together during consultation in order to provide clarity on the largest possible scale of Dogger Bank Creyke Beck and to give stakeholders the opportunity to provide their comments on both or either of the project proposals as they feel appropriate.

In October 2010, Forewind identified a broad area (the Scoping Envelope) in which the original Dogger Bank Project One development would be located. This is shown in Figure 1. Forewind identified the appropriate Local Authorities to consult on the development on this basis, namely the ERoY Council and Hull City Council.

---

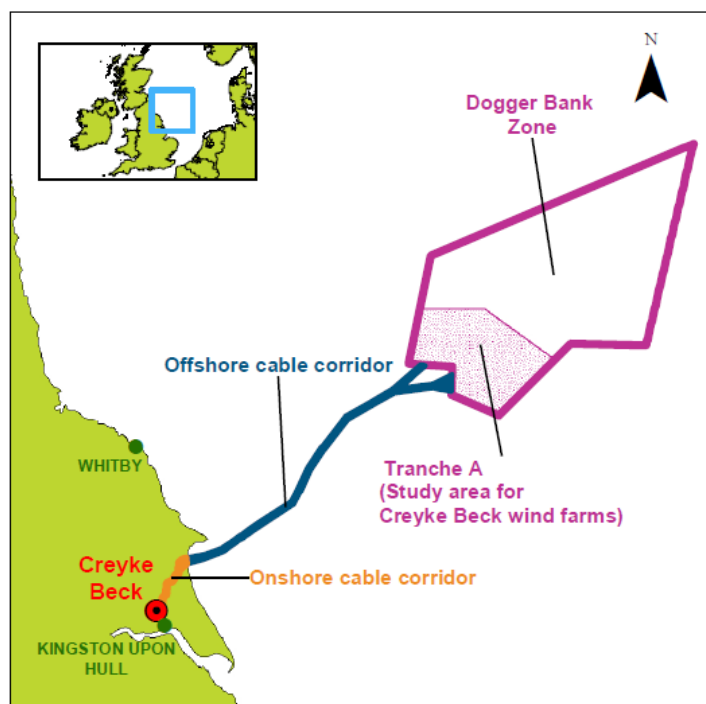
<sup>1</sup> The REZ was declared under section 84 of the Energy Act 2004. It extends from the seaward limit of the territorial sea up to a maximum of 200 nautical miles from the baseline.



**Figure 1 Dogger Bank Project One Scoping Envelope**

Since then, and in consultation with the Local Authorities, Forewind has undertaken a site selection process to identify the proposed location of the Dogger Bank Creyke Beck development, which is shown in Figure 2. This will be presented to consultees in Phase One of the community consultation process (through the public exhibitions and preliminary environmental information) and is described in Section 7.4.1 of this document.





**Figure 2 The proposed location for Dogger Bank Creyke Beck**

There are two key elements of the development: the offshore works and the onshore works. For the purposes of this document, offshore means any point on the seaward side of the point the export cables come to shore (the landfall) and comprises the grey and blue highlighted sections in Figure 1.

## 5.1 Offshore

The offshore works comprise not only the offshore wind farms, but also a range of associated development needed for the operation of the wind farms. This includes:

- Subsea alternating current (AC) cabling between the offshore wind turbine generators (inter-array cables);
- Offshore collector stations and offshore AC to Direct Current (DC) converter stations including foundations and scour protection measures;
- Offshore operations and maintenance infrastructure, including accommodation platforms;
- Permanent moorings, navigational buoys and scour protection measures;
- Subsea DC export cables, from the offshore converter stations to the UK coastline, or possibly adjacent projects;
- Crossing structures at the points where project cables cross existing subsea cables and pipelines; and
- Offshore meteorological masts and metocean equipment.

## 5.2 Onshore

The onshore works include:

- Cables buried below the foreshore;
- An onshore buried cable joint at the landfall where the subsea cables come onshore and join the onshore cables;
- Underground direct current (DC) electricity cable system - from the landfall to the onshore DC to AC converter station(s);
- Ancillary cable ducts (if installed) - these are buried ducts running adjacent to the cable system;
- Up to four DC to AC converter stations; and
- An AC underground cable from the onshore converter station(s) to National Grid's substation at Creyke Beck.

The electricity generated at Dogger Bank Creyke Beck will be connected to the national high-voltage electricity transmission network, the national grid, at the existing Creyke Beck substation. This national grid is operated by the company National Grid<sup>2</sup>, which is responsible for developing and maintaining an efficient, co-ordinated and economical electricity transmission network. This includes determining where it is appropriate for power generation projects such as Dogger Bank Creyke Beck to connect to the network. National Grid may need to carry out works at Creyke Beck Substation in order to connect Dogger Bank Creyke Beck. Consenting, construction and operation of these works will be the responsibility of National Grid. Forewind will endeavour to provide details of any such works during the consultation process.

Infrastructure improvements may be needed to local port facilities in order to support the construction, operation and decommissioning of Dogger Bank Creyke Beck. This will not be part of the Dogger Bank Creyke Beck application(s).

Further detail on Dogger Bank Creyke Beck is available on the project website at [www.forewind.co.uk](http://www.forewind.co.uk).

---

<sup>2</sup> National Grid in this document means the company National Grid Electricity Transmission Limited while 'national grid' is the name of the electricity network itself.

## 6 The SoCC

### 6.3 Scope of the SoCC

The Statement of Community Consultation (SoCC) (see Appendix A) is a formal requirement of the Planning Act that sets out how Forewind will consult with local communities.

In parallel with the consultation undertaken with the local community, Forewind will engage with the local, national and international fishing community to ensure that they are kept up to date with the development and are also given an opportunity to provide comments on the proposal. Details of this consultation process will be published separately in Forewind's Fisheries Liaison Plan.

Forewind will work with the IPC or its successor and the relevant UK and EU governments to ensure that appropriate international stakeholders are consulted.

Statutory consultees, the Local Authorities, landowners and tenants will also be consulted in accordance with Section 42 of the Planning Act. Further details are provided in Forewind's Stakeholder Engagement Plan (StEP) which is available to download from the Forewind website [www.forewind.co.uk](http://www.forewind.co.uk)

### 6.4 Consultation on the content of the SoCC

The format and content of the SoCC, in Appendix A, shows how Forewind proposes to communicate a clear, informative and comprehensive statement to the various communities on how it will consult them.

ERoY Council and Hull City Council have been consulted on the proposed content of the SoCC, as they are the Local Authorities within which the "land" lies in relation to the Dogger Bank Creyke Beck. ERoY Council is the directly affected Local Authority, because the proposed onshore cables and converter station(s) will be located within its boundaries. Hull City Council was consulted on the SoCC as a very small area of the original scoping area<sup>3</sup>, as shown in Figure 1, lay within its boundary. None of the preferred study area for Dogger Bank Creyke Beck onshore works now falls within the Hull City Council area. In accordance with DCLG guidance, Forewind has also sought the views of the Marine Management Organisation (MMO) on the offshore elements of the wind farm consultation strategy.

In line with IPC Guidance Note 1, Forewind supplied ERoY Council, Hull City Council and the MMO with the following preliminary environmental information (PEI) at the time of consulting on the SoCC:

<sup>3</sup> See the Dogger Bank Project One Scoping Report, published by Forewind in October 2010.

- The Dogger Bank Project One Scoping Report
- The Dogger Bank Zonal Characterisation Report (ZoC)
- The Tranche A Selection Report
- A map showing the community consultation boundary in relation to the preferred study area

The authorities that have received this document are listed below, along with the potential impact to communities within their boundaries.

Authority	Potential Impact
East Riding of Yorkshire (ERoY) Council (Statutory consultee to this document under Section 47 of the Planning Act)	<ul style="list-style-type: none"> <li>• Potential impacts associated with the construction, operation and decommissioning of the converter station(s) and onshore cables routes connecting to offshore cables</li> <li>• Potential impacts associated with the construction, operation and decommissioning of offshore cables as they come close to the shore</li> </ul>
Hull City Council (Statutory consultee to this document under Section 47 of the Planning Act)	<ul style="list-style-type: none"> <li>• Potential impacts on sea users within the council's areas (e.g. fishermen, recreational users etc.)</li> </ul>
Marine Management Organisation (MMO)	<ul style="list-style-type: none"> <li>• Impacts due to operations associated with the construction, operation and decommissioning of components below MHWS<sup>4</sup></li> </ul>

**Table 1 Authorities that have been consulted on the content of the SoCC**

## 6.5 Publications proposed for advertising the SoCC

Section 47(6) of the Planning Act requires that:

*Once the applicant has prepared the statement, the applicant must publish it –*  
*(a) in a newspaper circulating in the vicinity of the land, and*  
*(b) in such other manner as may be prescribed.*

<sup>4</sup> Mean high water springs

Forewind proposes to publish the SoCC for Dogger Bank Creyke Beck in the publications shown in Table 2, in the form of a single issue notification.

The publications proposed are intended to capture the communities affected by both the offshore works and the onshore works.

Publication	Distribution	Purpose
Advertiser Series	Holderness, East Hull, Beverley, West Hull, West Hull villages	Free weekly newspaper delivered across the East Riding and Hull reaching people who do not buy a newspaper
Bridlington Free Press	Bridlington and neighbouring villages in the Bridlington Bay and Flamborough Head area	Weekly tabloid newspaper. The biggest selling newspaper in the Bridlington area. To capture people in the landfall area and northern stretch of the cable route corridor
Fishing News	Commercial fishing industry	To capture offshore users notable those commercial fishing interests that may use the Dogger Bank Zone
Holderness Gazette	Holderness and East Coast from Hornsea down to Spurn Point	To capture the eastern area of the East Riding including Holderness and the East Coast
Hull Daily Mail	Barton-upon-Humber, Beverley, Bridlington, Driffield, Filey, Flamborough, Goole, Hornsea, Howden, Hull, Market Weighton, Pocklington, Scarborough, Withernsea, York	To capture the southern extent of the East Riding of Yorkshire (Holderness) coast

**Table 2 Publications in which Forewind proposes to publish the SoCC**

In addition, a summary of the SoCC and a link to the full document will be published in the Kingfisher Bulletin which is distributed as an electronic newsletter to mariners. It is not possible to publish the SoCC in full in the Kingfisher Bulletin due to constraints on the available space.

Hard copies of the SoCC will be made available at local public venues such as libraries and ERO's and Hull City Council's offices (where possible), and it will also be available for download at [www.forewind.co.uk](http://www.forewind.co.uk).

## 7 Scope of the community consultation process

### 7.3 Objectives

The objectives of the Dogger Bank Creyke Beck community consultation are to:

- Provide information to all sections of the relevant communities in a clear and concise way,
- Create a process through which local people can comment on the proposal and provide Forewind with information relevant to the proposal,
- Ensure that Forewind understands the views of the local community in order that they can be considered during the development process, and
- Provide feedback on how community consultation has influenced the proposal.

### 7.4 Phases of consultation

Guidance from the DCLG on pre-application consultation states that:

*“consultation must happen at a sufficiently early stage to allow consultees a real opportunity to influence the proposals.”*

Following early discussions with ERoY Council and Hull City Council, Forewind has determined that it is appropriate to undertake a two-phase consultation with the community for Dogger Bank Creyke Beck.

Details of the two phases are identified below.

#### 7.4.1 Phase One – The site selection process to date

Forewind has narrowed down the original Scoping Envelope (shown in Figure 1) and has identified the proposed location for the onshore and offshore infrastructure for Dogger Bank Creyke Beck. This consists of:

- Tranche A – the area in the Dogger Bank Zone that Forewind proposes to site the Dogger Bank Creyke Beck wind turbine generators and some of the associated infrastructure;
- The offshore cable corridor (approximately 2km wide);
- Two shortlisted landfall areas;
- The onshore cable corridor (at least 1km wide) – this consists of an indicative cable route with spurs to the two shortlisted landfall areas and a 500m buffer either side to allow for micrositing;
- The refined onshore converter station study area within which the final location of the onshore converter station(s) will be selected.



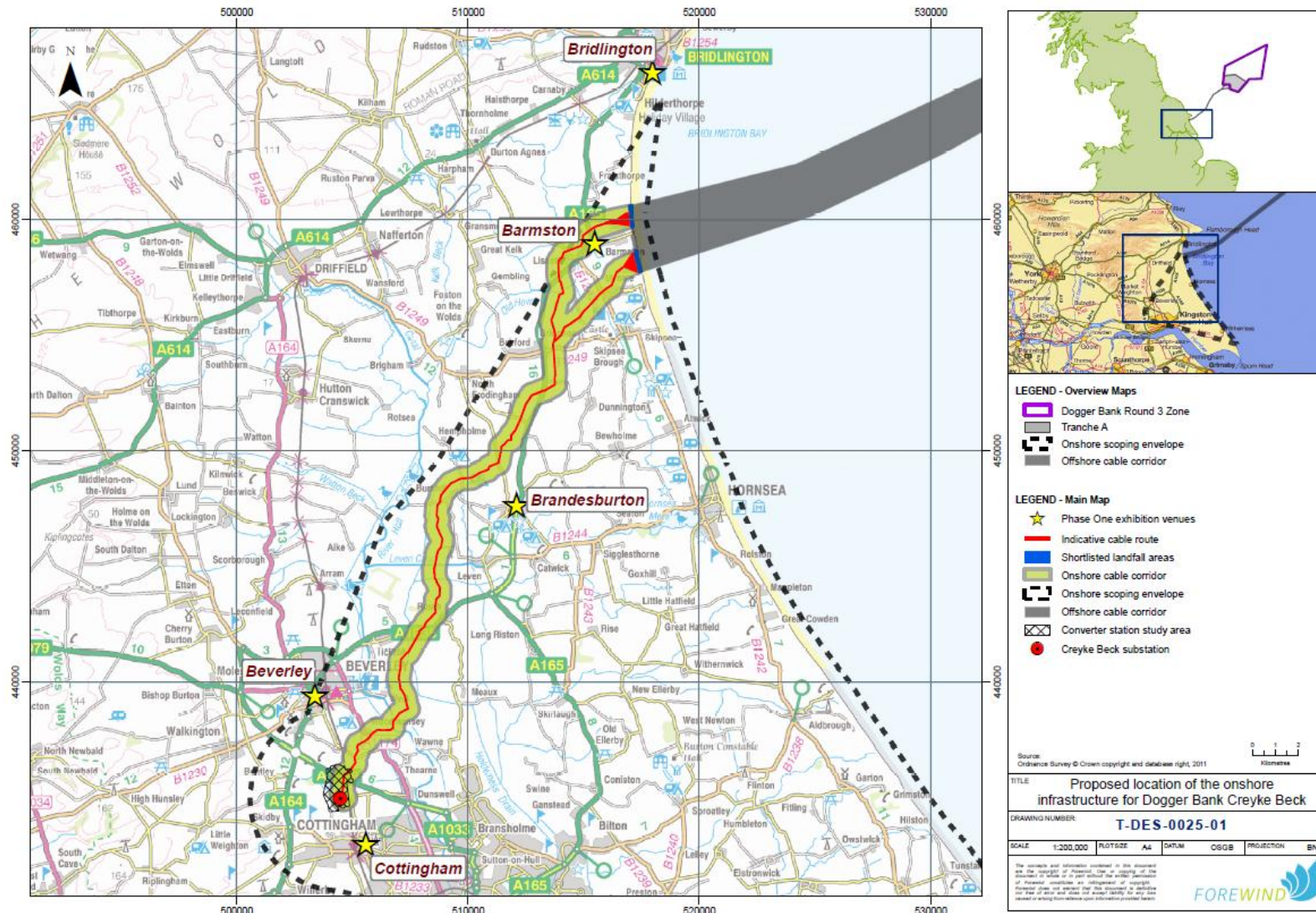


Figure 3 Proposed location of the onshore infrastructure for Dogger Bank Creyke Beck

The offshore elements of the refined study area are shown in 5Figure 2 and the onshore elements of the refined study area are shown in Figure 3.

Forewind recognises that the local community may be aware of issues and have valuable information about the study area, and that they will have preferences about the location of the infrastructure or the way that it is constructed. Forewind is committed to considering this information in the development of the project and will therefore undertake to engage at an early stage with those people in the 'vicinity' of the study area, both offshore and onshore. Forewind will also put in place mechanisms so that the wider community can contribute to this process. Details are given later in this document.

PEI will be made available during this phase to explain how the proposed location of the infrastructure was chosen and the site selection process that was followed.

#### 7.4.2 Phase Two – Full details of the project

Having considered the results of the Phase One consultation and further developed the project and PEI, Forewind will move to Phase Two of the consultation process. This will involve setting out the detail of the offshore and onshore proposals for Dogger Bank Creyke Beck and consulting with the relevant communities.

Prior to this stage, Forewind will inform the local community whether one single application will be made for a DCO for the entirety of Dogger Bank Creyke Beck, or whether it will be the subject of two separate applications. If Dogger Bank Creyke Beck is to be consented as two separate applications, Forewind will explain how the consultation responses received will apply to each application going forwards.

Phase Two will target those people in the vicinity of both the offshore and onshore elements of the project who may be affected by the offshore or onshore elements of the proposals. Forewind will also put in place mechanisms so that the wider community, who may be aware of the project via the SoCC or other communications tools, can contribute to the process. Details are given later in this document.

### 7.5 Defining 'the vicinity' of the project

A key requirement of the guidance from the DCLG is for developers to establish the appropriate "vicinity" of the project in which to consult and this is an important focus of this document. The level of consultation in each area seeks to be appropriate to the potential impacts of the scheme at those locations.

Guidance from the DCLG states that:

*"In most communities promoters will need to strike a balance between consulting those who are significantly affected by proposals (i.e. those identified in Section 42 of the Act) and consulting a wider group of local people who will not be directly affected, but who will have a reasonable fear that they might be, or will have*



*strong feelings about a project. This second category may include people who live in the proximity of the development, but not close enough to be physically affected by it, people who are likely to be affected by wider impacts of the development, or who are users of, or visitors to the area.”*

Furthermore the guidance states that:

*“We also recognise that, whilst consultation should be thorough and effective, there will be a variety of possible approaches to discharging the requirements, and that consultation will need to be proportionate.”*

The following section identifies how the ‘vicinity’ for our consultation is derived based on the potential impacts of the different elements of the scheme. The combined consultation boundaries defined below will constitute the Consultation Area. Forewind will consult directly with stakeholders within this area as they are more likely to be affected by the proposal than the general public.

Forewind welcomes consultation responses from anyone with an interest in the Dogger Bank Creyke Beck. Therefore, Forewind will advertise consultation events in the local newspapers, marine journals and on the Forewind website to ensure that anyone not included in the defined Consultation Area, will also have the opportunity to take part.

Figure 4 shows the Consultation Area for Phase One, which is based on the study areas defined on 9<sup>th</sup> November 2011. Sections 7.5.2 and 7.5.3 explain in detail how these boundaries were defined.

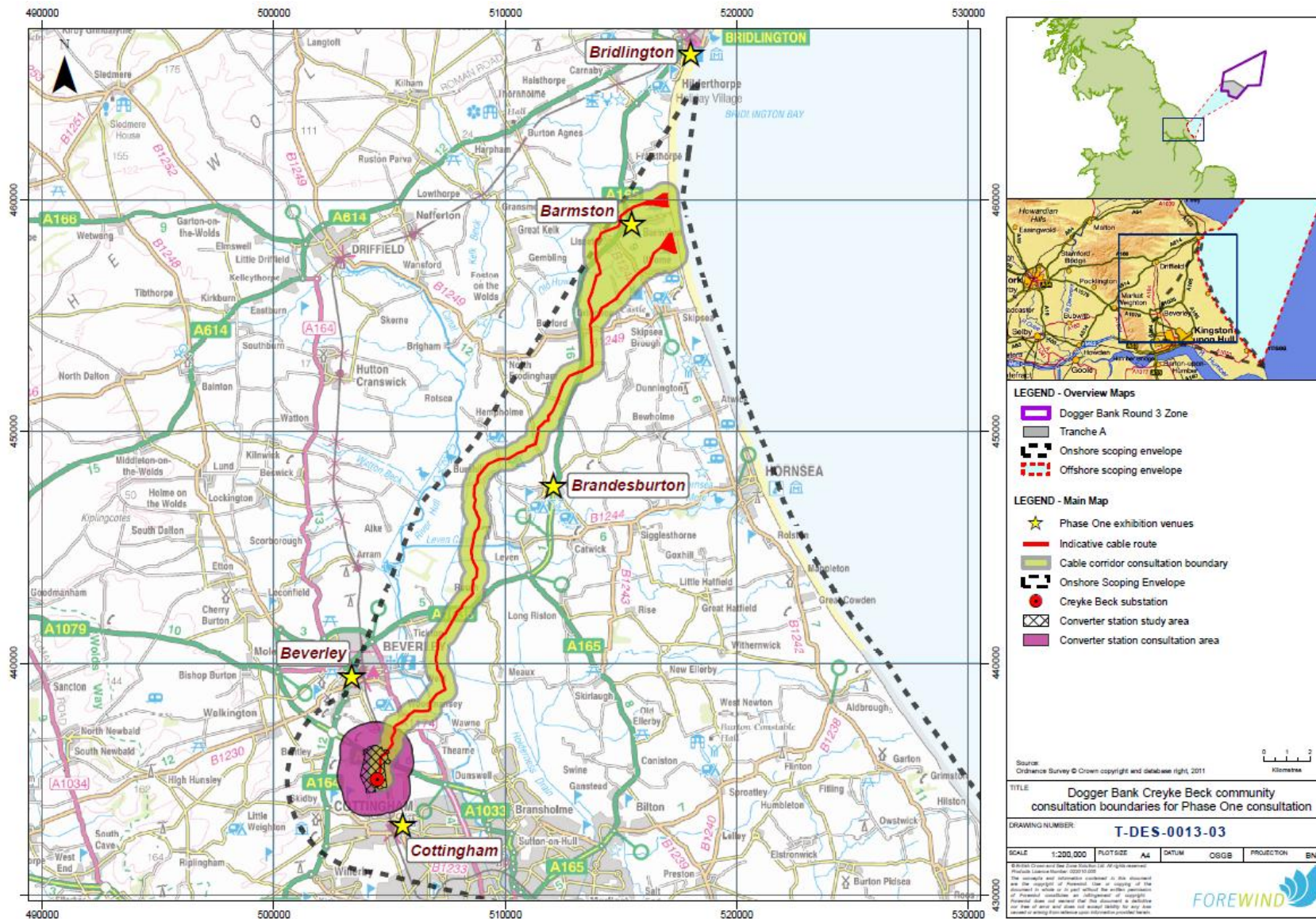


Figure 4 The Consultation Area for Phase One

## 7.5.2 The vicinity for the onshore works

The onshore converter station(s) and cable route may have a variety of different potential impacts, the primary examples of which are summarised below:

### Onshore converter station(s)

- Temporary noise, dust and air quality impacts during construction
- Temporary visual impacts from construction equipment
- Temporary impacts on watercourses
- Temporary disruption during delivery of abnormal loads with large electrical equipment
- Temporary impacts on traffic networks due to construction traffic
- Permanent or semi-permanent visual impacts from the construction of new buildings and long-term removal of vegetation, or the time needed for new vegetation to grow
- Permanent Low Frequency Electro-magnetic Field (EMF) considerations
- Permanent operational noise
- Permanent new access arrangements
- Potential employment benefits for the operation and maintenance of the converter station(s).

### Onshore cable route

- Temporary noise, dust and air quality impacts during construction
- Temporary visual impacts from construction equipment
- Temporary impacts on watercourses during construction
- Temporary impacts on traffic networks due to road crossings and construction traffic
- Permanent or semi-permanent visual impacts from the removal of vegetation, or the time needed for new vegetation to grow
- Permanent Low Frequency Electro-magnetic Field (EMF) considerations
- Permanent removal of existing development or development potential along the cable route

As Forewind has chosen to bury all of the onshore electricity cables underground rather than erect overhead lines, the majority of the onshore cable route impacts would be temporary and are unlikely to have an impact over a significant distance. Permanent potential impacts are expected to be restricted to EMF, which would be a very localised issue, and any permanent or semi-permanent visual impacts from the removal of vegetation or construction of new buildings.

Therefore, Forewind proposes that the onshore cable route consultation boundary should match the 1km wide onshore cable corridor study area. The study area is effectively a 500m buffer either side of Forewind's indicative cable route. The cable route consultation boundary has been expanded near the coast to include the village

of Barmston, which lies between the two shortlisted landfall areas but outside of the cable corridor study area.

Visual impacts of the new converter station(s) are expected to be one of the key concerns of the local community. We therefore propose that the converter station consultation boundary extends 1km from the converter station study area boundary.

Within these consultation boundaries, the targeted group of community consultees for will be as follows:

- Local residents, businesses and community groups with postal addresses or who are active within either consultation boundary;
- Members of UK and European Parliaments with local constituencies wholly or partly within either consultation boundary;
- Parish councils wholly or partly within either consultation boundary; and
- District and county councillors with wards/divisions wholly or partly within either consultation boundary.

### 7.5.3 The vicinity for the offshore works

The construction and operation of the offshore wind farm, offshore converter stations and subsea cable route will have a variety of impacts, including but not limited to:

- Temporary noise during construction and decommissioning;
- Temporary disturbance and redistribution of sediments during construction;
- Temporary exclusion of other marine users during construction;
- Temporary construction activity (exclusion, noise and visual impacts) on the landfall site;
- Temporary construction vessel movement to and from the wind farm site and cable route;
- Temporary employment benefits during the construction and decommissioning periods;
- Permanent limits or exclusions on movement through the wind farms;
- Permanent regular movements of operational and maintenance vessels to and from the wind farms;
- Permanent, very localised (at or in the seabed) low frequency Electro-Magnetic Field (EMF) considerations;
- Permanent visual impacts of the offshore infrastructure; and
- Permanent employment benefits during the operation of the wind farm; and
- Temporary or permanent effects on commercially important fish or shellfish species.

The majority of the above impacts will only affect sea-based users and the coastal residents nearest the subsea cable route and landfall.



As with the onshore cable route and onshore converter station(s) we will undertake a tiered approach to consultation, whereby those stakeholders with an interest close to the incoming subsea cable route will be targeted directly for consultation.

Stakeholders likely to be affected only by visual impact during construction will be made aware of the consultation events via the general media. For those within 500m radius of the landfall and incoming subsea cable route and in the village of Barmston (the landfall consultation boundary) we will seek to consult directly with the following groups:

- Local residents, businesses and community groups with postal addresses or who are active within the landfall consultation boundary;
- Recreational and commercial users of the sea<sup>5</sup> and coastline in the proximity of the subsea cable route and landfall;
- Members of British and European Parliaments with local constituencies wholly or partly within the landfall consultation boundary;
- Parish councils wholly or partly within the landfall consultation boundary; and
- District and county councillors with wards/divisions wholly or partly within the landfall consultation boundary.

#### 7.5.4 Other technical or community organisations

In addition to those consultees described above, Forewind has used ERoY Council's and Hull City Council's Statements of Community Involvement (SCI) to identify community groups and organisations (for example the Local Enterprise Partnerships -LEPs) that are active or have an interest in the study area. These will be added to the Forewind stakeholder database and will be consulted along with all other stakeholders in accordance with the relevant requirements under the Planning Act.

#### 7.5.5 Hard-to-reach groups

DCLG guidance notes that it is important for promoters to identify any hard-to-reach groups in the areas where consultation is occurring.

During informal meetings with ERoY Council it was identified that the key hard-to-reach group on the coastline was the significant elderly population which is unlikely to have access to the internet and may have relatively low mobility. For this reason we have included proposals for a public exhibition venue at the coast. We also propose to lodge all our consultation documents in local libraries, including the mobile library service. There is a freephone telephone number and freepost address to allow feedback, questions and comments to be submitted free-of-charge and at a time convenient to that person.

---

<sup>5</sup> Note that in parallel to the consultation undertaken with the local community Forewind will be engaging with the local, national and international fishing community to ensure that they are up to date with the development proposals and are also given an opportunity to provide any comments. Commercial mariners affected by the wind farm or the export cable will be consulted under the Section 42 process as they are likely to be directly affected.

Forewind is aware of the high rate of illiteracy in the north of Hull. Whilst this area is outside of the consultation boundary, Forewind recognises that this community may still wish to take part in the consultation process and therefore Forewind will endeavour to advertise the consultation events on the local radio and local television. Staff will be available at the public exhibitions to explain the proposal and answer questions and consultation responses can be submitted via the freephone telephone number or in person at the public exhibitions. All the main consultation materials will be written in non-technical language.

## 7.6 How we will consult

Forewind will invite communities and interested parties to read the PEI, attend public exhibitions to discuss the proposal with members of staff and submit comments on the development of Dogger Bank Creyke Beck. There will be a number of alternate ways to contact the project team and these are described in Section 4.4.

Forewind will endeavour to provide clear and concise information about the project and its impacts throughout the pre-application consultation process, to enable constructive debate to take place.

### 7.6.1 How we will consult - Phase One

Those within the consultation boundaries will receive direct invitations to public exhibitions and advised how they can access the PEI. Response mechanisms will be put in place to allow feedback and comments by post, telephone, on-line and in person at the exhibitions.

It is important that other members of the community from outside the consultation boundaries are aware of our proposals and have the opportunity to comment. Therefore, Forewind will announce the commencement of the Phase One consultation by issuing information to local media outlets (via a press release and adverts), by putting up posters, and on the Forewind website [www.forewind.co.uk](http://www.forewind.co.uk).

### 7.6.2 How we will consult - Phase Two

Consultees will receive Dogger Bank Creyke Beck factsheets and invitations to public exhibitions by post, and they will also be able to obtain information via the other communication methods listed below.

A key consultation activity will be the undertaking of public exhibitions in the potentially affected areas. Details of the public exhibitions and general project news will be included in fact sheets, newsletters and posters which will be made available in local community outlets, press releases issued to local media, on the Forewind website and through information provided to local politicians.

The Forewind website will be developed and expanded during the pre-application consultation process and a dedicated telephone contact number, postal address and e-mail address are already available.

### 7.6.3 Consideration of other promoters' consultation exercises

Forewind is aware that there are other promoters consulting this community on other projects. Where possible, Forewind will avoid scheduling consultation events that overlap with these other consultation exercises. Currently there are three other projects listed on the IPC website that could be consulting in this area:

- SMart Wind Ltd – Hornsea Offshore (Round 3 Zone 4) Wind Farm
- Able – Able Marine Energy Park
- National Grid Carbon Ltd – Yorkshire and Humber Cross Country CCS Pipeline

### 7.6.4 Communication tools

A range of communication tools will be used to disseminate information to consultees. These are:

- **Website** – [www.forewind.co.uk](http://www.forewind.co.uk) is already live and will be updated during the wind farm project development. The website will explain what we are consulting about, advertise the public exhibitions events, include electronic copies of all publications and will give details of how to contact the project team to submit comments or questions.
- **Factsheets** – Dogger Bank Creyke Beck topic specific factsheets will be sent by post to those in the consultation boundaries. They will also be made available to the wider community at a range of community outlets. Copies will be available on request from Forewind and at [www.forewind.co.uk](http://www.forewind.co.uk).
- **Newsletter** – a Dogger Bank Newsletter will be introduced to provide information on the zone-wide development. This will include progress on Dogger Bank Creyke Beck as well as the other ongoing zonal activities to give a fuller picture of all the work being undertaken by Forewind on this development. The newsletter will be sent by post or e.mail to those within the consultation boundaries and will be available at public outlets.
- **Points of contact** – A dedicated Dogger Bank freepost postal address, free phone telephone number and email address have been set up.
- **Media** – press releases will be issued from time to time during the development process giving details about the public exhibitions and report publication.
- **Public exhibitions** – to be held in at least three locations in the East Riding of Yorkshire. They will be open exhibitions where people will be able to view details of the wind farm proposal (onshore and offshore), talk to the project team and submit their comments. The exhibitions will be held at publicly accessible locations. People will be informed about the venues and dates when the events

are organised through a range of communication channels including the Forewind website, media releases and advertisements, posters and (within the consultation boundaries) by direct invitation. Informal consultation with ERO Y Council has identified in or near Cottingham, Brandesburton and Barmston as appropriate locations to hold the Phase One public exhibitions. Forewind have also chosen to hold exhibitions in Bridlington to encourage the fisheries community to engage in the consultation, and Beverley as another major town close to the development. The venues may be reviewed for the Phase Two exhibitions once the precise locations of the onshore infrastructure are clear.

- **Feedback forms** – feedback forms will be available for people to submit their comments when they attend the public exhibitions in both consultation phases. People will also be able to download the form from the Forewind website.
- **Elected representative engagement (including information for parish council clerks)** – Forewind will undertake updates and briefings for local politicians about the offshore and onshore elements of the wind farm to ensure they have all of the relevant facts, the opportunity to comment on the project and can feed into the consultation process.
- **Ongoing liaison with marine users** – including general and issue-specific meetings, factsheets, and direct contact with relevant individuals and organisations about the wind farm project. A Fisheries Liaison Plan will be published separately.
- **Lodging of documents in public** – Forewind will lodge key consultation documents at a number of appropriate ERO Y Council and Hull City Council offices and public libraries, including the mobile library service. The documents will include:
  - The final version of this Consultation Document
  - The advertised version of the SoCC
  - Any questionnaires, factsheets or newsletters issued to local communities
  - Any further adverts made in line with the SoCC
  - The PEI
  - The application documents

Further copies will be made available on request.



## 8 What we will do with the consultation

All consultation responses received by Forewind during the consultation periods will be recorded and considered alongside the development proposals. Forewind is required by the provisions of the Planning Act to show how it has considered responses to all formal consultations in a Consultation Report, which will be submitted as part of the application to the IPC or its successor. Responses received outside the consultation periods will be considered wherever possible.

## 9 Consultation summary

During the pre-application consultation process, the Forewind website will be updated with relevant information as it becomes available. The dedicated contact methods (telephone, post and e-mail) will be available throughout the consultation periods and post-application. Liaising with the local media, proactively sending out press releases and reactively responding to media enquiries will begin when the consultation period starts and will continue during the consultation periods and beyond. During the consultation periods, public exhibitions, newsletters and factsheets will be used to update the local communities and mariners with information and progress on the project.

### 9.3 Summary of consultation activities in Phase One

- Publication of the SoCC;
- Advertise the start of Phase One and details of the public exhibitions (within the SoCC);
- Send direct invitations to the public exhibitions to the community consultees;
- Public exhibitions to introduce the development and present the site selection work done to date;
- Make PEI available;
- Dogger Bank Creyke Beck factsheets;
- Dogger Bank Newsletter;
- Lodging of documents in public places;
- Local media briefings and press releases;
- Ongoing liaison with marine users.

### 9.4 Summary of consultation activities in Phase Two

- Public exhibitions covering the full detail of Dogger Bank Creyke Beck;
- Make PEI available;
- Dogger Bank Creyke Beck factsheets;
- Dogger Bank Newsletters;
- Lodging of documents in public places;
- Local media briefings and press releases;
- Elected representative engagement including offers of meetings to relevant political figures;
- Ongoing liaison with marine users.

## 10 Further information

For further information about Forewind or our plans for Dogger Bank Creyke Beck, contact the Stakeholder Management Team at:

**Post:** Freepost RSLY-HKGK-HEBR  
Forewind  
Davidson House,  
Forbury Square,  
Reading, RG1 3EU

**e-mail:** [info@forewind.co.uk](mailto:info@forewind.co.uk)

**Website:** [www.forewind.co.uk](http://www.forewind.co.uk)

**Phone:** 0800 975 5636

# Appendices

## Appendix A: Statement of Community Consultation (SoCC)



## Dogger Bank Creyke Beck Offshore Wind Farm



### DOGGER BANK CREYKE BECK

Statement of Community Consultation  
Published in accordance with Section 47(6)  
of the Planning Act 2008

#### Introduction

Forewind is publishing this Statement of Community Consultation (SoCC) for the proposed Dogger Bank Creyke Beck Offshore Wind Development and its associated infrastructure. This Statement explains how we will consult with the local community including residents living within a specified distance of the project, the general public, community groups, local businesses, technical consultees and land owners, as well as others who work in or use the area, both offshore and onshore.

Pre-application consultation provides the main opportunity for the local community to be engaged with and to help shape the proposals so it is important that you let Forewind know if you have any comments or information about any part of the Dogger Bank Creyke Beck proposal during this consultation process.

#### Forewind and the Dogger Bank Offshore Wind Farm Zone

Forewind is a consortium comprising four leading international energy companies which joined forces to successfully bid for the right to develop the Dogger Bank Offshore Wind Farm Zone as part of The Crown Estate's third round of UK offshore wind farm leasing (Round 3).

The Dogger Bank Zone is in the North Sea, located between 125 and 290 kilometres off the English coast, east of Yorkshire. It extends over an area of approximately 8660 km<sup>2</sup> (approximately the same size as North Yorkshire) with its eastern most outer limit aligned to the UK continental shelf, as defined by the UK Hydrographic Office. The water depth ranges from 19-63 metres.

Forewind has committed to developing 9 Gigawatts (GW) of wind generation capacity at Dogger Bank but believes that the zone has the potential to accommodate up to 13GW, which if built to this capacity would make it the largest offshore wind farm development in the world. To relieve the pressure on stakeholders and the supply chain, the zone will be developed in a series of up to 12 wind farms.

Dogger Bank Creyke Beck is an offshore wind farm development of up to 2.8GW which will connect into the existing Creyke Beck substation near Cottingham in the East Riding of Yorkshire. It will comprise up to two offshore wind farms, each with a maximum generating capacity of up to 1.4GW.

These two wind farms will be presented to stakeholders together during consultation in order to provide clarity on the largest possible scale of Dogger Bank Creyke Beck and to give stakeholders the opportunity to provide their comments on both or either of the project proposals as they feel appropriate.

Forewind will either submit a single application for one wind farm development of up to 2.8GW or else will submit two separate applications (each for a wind farm of up to 1.4GW) at the end of the development phase. This decision will be made and presented to stakeholders prior to the Phase Two consultation (described in more detail later in this document). It is currently Forewind's intention to include the associated offshore and onshore infrastructure for each offshore wind farm in each application.

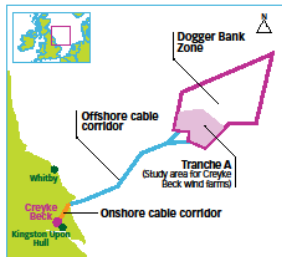


Figure 1  
The location of Dogger Bank Creyke Beck

Dogger Bank Creyke Beck will comprise of:

- Offshore wind turbine generators (the number and generating capacity of the wind turbines is yet to be decided);
- Alternating Current (AC) cabling between the offshore wind turbine generators (inter-array cabling) and onshore platforms;
- Offshore collector stations and offshore AC to Direct Current (DC) converter stations including foundations and scour protection measures;

- Offshore operations and maintenance infrastructure including offshore accommodation;
- Permanent moorings, navigational buoys and scour protection measures;
- Offshore meteorological masts and meteocean equipment;
- DC subsea export cable system from the offshore AC to DC converter stations to the landfill on the UK coastline;
- Crossing structures at the points where the export and inter-array cables cross existing subsea cables and pipelines;
- A buried onshore cable joint at the landfill where the subsea export cables come onshore and join the onshore cables;
- Underground onshore DC export cable system from the landfill area to the onshore DC to AC converter station(s);
- Up to four onshore DC to AC converter stations which could be up to 30m in height and will require a combined permanent land take of up to 9 hectares with additional land required for mitigation which may include landscaping, and
- An AC underground cable from the onshore converter station(s) to National Grid's substation at Creyke Beck.

#### Potential impacts

The development of Dogger Bank Creyke Beck would be a major step towards achieving the Government's renewable energy targets and improving energy security for the UK. It will also generate local and national employment opportunities. There will be some local impacts but where it is reasonably feasible, Forewind intends to minimise any potentially negative impacts on the local community. These impacts are expected to include (but are not restricted to) temporary noise and disruption during construction, permanent visual impacts resulting from the construction of the onshore converter station(s), increased marine traffic during construction and operation and limits or exclusions on movement through the offshore wind farms.

#### The consenting process

Offshore wind farms with a capacity over 100MW are classified as Nationally Significant Infrastructure Projects (NSIPs) under Section 14 of the Planning Act 2008 and require a Development Consent Order (DCO) before they can be built. Under current legislation, Forewind must submit an application for a DCO to the Infrastructure Planning Commission (IPC). However, the Localism Bill, which is currently before Parliament, proposes to abolish the IPC and applications will then most likely be submitted to a new major infrastructure department of the Planning Inspectorate. It is expected that this legislation will come

into effect in April 2012. Therefore, it is likely that Forewind will submit applications for DCOs to the IPC's successor - hereafter referred to as the "Examining Body".

For each application, the Examining Body will first decide whether or not the application should be accepted. If accepted, it will examine and determine the application in accordance with the relevant National Policy Statements (NPS), which set out the need for new energy infrastructure and the issues to be considered in determining an application. For this project the relevant NPSs are EN1 - Overarching Energy and EN3 - Renewable Energy Infrastructure. The Examining Body will then recommend to the Secretary of State (SoS) whether or not the application should be approved. If the SoS approves the application, the DCO will be awarded authorising the construction and operation of the wind farm.

#### Consultation objectives

The objectives of the Dogger Bank Creyke Beck community consultation process are to:

- Provide information to all sections of the local communities in a clear and concise way;
- Create a process through which local people can comment on the formal proposals;
- Ensure that Forewind understands the views of the local community in order that they can be considered during the development process; and
- Provide feedback on how community consultation has influenced the proposal.

#### What we will consult on

The consultation will be carried out in two formal phases:

##### Phase One - The site selection process to date (Late 2011)

During Phase One, Forewind will clearly explain the site selection work done to date, including the process to narrow down the original study areas within which the offshore wind farms, offshore cables, landfill site(s), onshore cables and converter station(s) will be sited. Forewind will set out why the proposed location has been selected and what further refinement is required. Forewind will ask the local community to provide any comments or information on the site selection work that they think Forewind should consider when choosing the precise locations for onshore and offshore elements of the project.

##### Public exhibitions will be held at the following times and places:

Venue	Date (2011)	Time
Barmston Village Hall Sands Lane, Barmston YO25 8PG	Monday 5 December	2pm-8pm
Bridlington Spa South Marine Drive, Bridlington YO15 3JH	Tuesday 6 December	2pm-8pm
Brandesburton Parish Hall Caldwell Lane, Brandesburton YO25 8SB	Wednesday 7 December	2pm-8pm
Cottingham Civic Hall Market Green, Cottingham HU16 5QG	Friday 9 December	2pm-8pm
Beverley Library Champerley Road, Beverley HU17 8HE	Saturday 10 December	10am-3pm

Consultation documents will also be available at local libraries and to download from the Forewind website [www.forewind.co.uk](http://www.forewind.co.uk) from Monday 5 December. For a list of the relevant libraries, please refer to the Forewind website or contact Forewind directly.

**This constitutes formal notice of the start of the Phase One Consultation. Consultation responses must reach Forewind by Friday 20 January 2012** to ensure that they are considered. However, Forewind will endeavour to consider any responses received outside this period, wherever possible.

**Phase Two - The detailed proposals**  
During Phase Two, Forewind will ask the local community for comments on the detailed proposals for Dogger Bank Creyke Beck. At this stage, Forewind will have gathered and assessed a comprehensive set of data and will be able to explain the potential impacts of the development and any proposed mitigation measures, which may include landscaping.

Prior to Phase Two, Forewind will inform the local community whether it will be submitting a single application for a DCO for the entirety of Dogger Bank Creyke Beck, or whether two separate applications will be submitted. If separate applications are to be submitted, Forewind will explain how the consultation responses received will be applied to each application going forwards.

Currently, the exact dates and locations of the Phase Two consultation events have not been set but they will be published in the local press and marine journals, and on the Forewind website at least two weeks beforehand. Any response to consultation will need to reach Forewind before the consultation response deadline to ensure that it is considered. The period of the consultation and deadline for responses will be published when known.

#### Environmental Impact Assessment

Dogger Bank Creyke Beck is "EA Development" for the purposes of Schedule 2 to the Infrastructure Planning (Environmental Impact Assessment) Regulations 2009 and Forewind will comply the Preliminary Environmental Information (PEI) required to assess the environmental impacts of the project. PEI will be available during both stages of consultation.

#### Who we will consult

This process (both phases) is designed to engage with the local communities, both onshore and offshore, which may be affected by Dogger Bank Creyke Beck. The Consultation Area is defined as:

- Within 500m radius of the refined landfill areas;
- Within the 1000m wide onshore cable corridor; and
- Within 1000m from the onshore converter station study area or sites (when identified).

Forewind will send direct invitations to the consultation events to the following people, hereafter referred to as the "Local Community Consultees":

- Residents, businesses and community groups with postal addresses or who are active in the Consultation Area;
- Members of the British and European Parliaments with constituencies wholly or partly within the Consultation Area;
- District and County Councillors with wards/divisions wholly or partly within the Consultation Area; and
- Town and Parish Councils wholly or partly within the Consultation Area.

Anyone outside of the Consultation Area who may be interested in the project is welcome to take part in the community consultation process and should refer to advertisements in the local newspapers, marine journals and the Forewind website for details of the consultation events and deadlines for responses.

Forewind is engaging with the local, national and international fishing communities directly to ensure that they are up to date with the development proposals and are given the opportunity to provide comments. Details of this consultation process will be published separately in Forewind's Fisheries Liaison Plan. Members of the fishing community are welcome to engage in the community consultation process as well.

Forewind will work with the Examining Body and the relevant UK and EU governments to ensure that appropriate international stakeholders are consulted.

#### The methods we will use to consult

##### Public exhibitions

Anyone with an interest in Dogger Bank Creyke Beck is welcome to attend the public exhibitions. In addition to the information panels and printed materials, Forewind staff will be at the exhibitions to answer questions. Visitors will be asked to submit feedback and comments via questionnaires.

##### Newsletters and factsheets

Forewind will produce zone level newsletters and subject-specific factsheets at key stages of the project to ensure that the local community is kept up to date with the development.

##### Lodging of consultation documents in public

All PEI documents, questionnaires, factsheets and newsletters will be lodged at libraries, and wherever possible at East Riding of Yorkshire Council's and Hull City Council's Customer Service Centres, within and close to the Consultation Area. They will also be available to download from the Forewind website [www.forewind.co.uk](http://www.forewind.co.uk).

#### What we will do with responses to consultation

All responses received during consultation will be carefully considered. Details of any responses received during consultation and the account taken of those responses will be included in the Consultation Report, submitted with the application for a DCO to the Examining Body and will therefore be made public. For this reason, any responses to Forewind must not contain personal information about any third party without their consent. This is to ensure compliance with the Data Protection Act.

The Consultation Report will demonstrate how Forewind has complied with the consultation requirements of the Planning Act 2008 and will be considered by the Examining Body both when considering whether to accept the application and in examining the application.

#### Other consultations

There are other companies consulting local communities on other projects during the consultation period for Dogger Bank Creyke Beck. Where possible, Forewind will avoid scheduling consultation events that overlap with these other consultations. The following applications have been registered on the IPC website to date:

- **SMART Wind Ltd** - Hornsea Offshore Wind Farm
- **Able** - Able Marine Energy Park
- **National Grid Carbon Ltd** - Yorkshire and Humber Cross Country CCS Pipeline

#### How to get in touch with us or obtain more detailed information

A Consultation Document explaining the background to this SoCC can be downloaded from the Forewind website [www.forewind.co.uk](http://www.forewind.co.uk).

Website [www.forewind.co.uk](http://www.forewind.co.uk)

Email [info@forewind.co.uk](mailto:info@forewind.co.uk)

Free phone 0800 975 5436

Post Freepost RSLV-HGKX-HEBR  
Forewind  
Davidson House  
Forbury Square  
Reading  
RG1 3EU



[www.forewind.co.uk](http://www.forewind.co.uk)

Forewind  
Davidson House  
Forbury Square  
Reading  
RG1 3EU