



Self Evaluation for Race Teams

Rob Lamb
and
Adrian Stoggall





Race Officials' National Conference

Self Evaluation of Race Teams

Adrian Stoggall & Robert Lamb

Aims of a Race Management Team



Have a good time

Provide the best possible racing for the customers

- fairness
- consistent
- quality

Optimise the RM team's performance

=

Provide the best racing possible

Optimising a team's performance

- Objectivity
- Discussion
- No-blame culture
- Briefings and debriefings
- Asking the question(s)

What can we test objectively on the race course?

- Start Line
- Beat
- Run
- Gate
- Target Time
- Redress awarded for improper actions of the RC

What can we test objectively on the race course?

- Start Line
- Beat
- Run
- Gate
- Target Time
- Redress awarded for improper actions of the RC

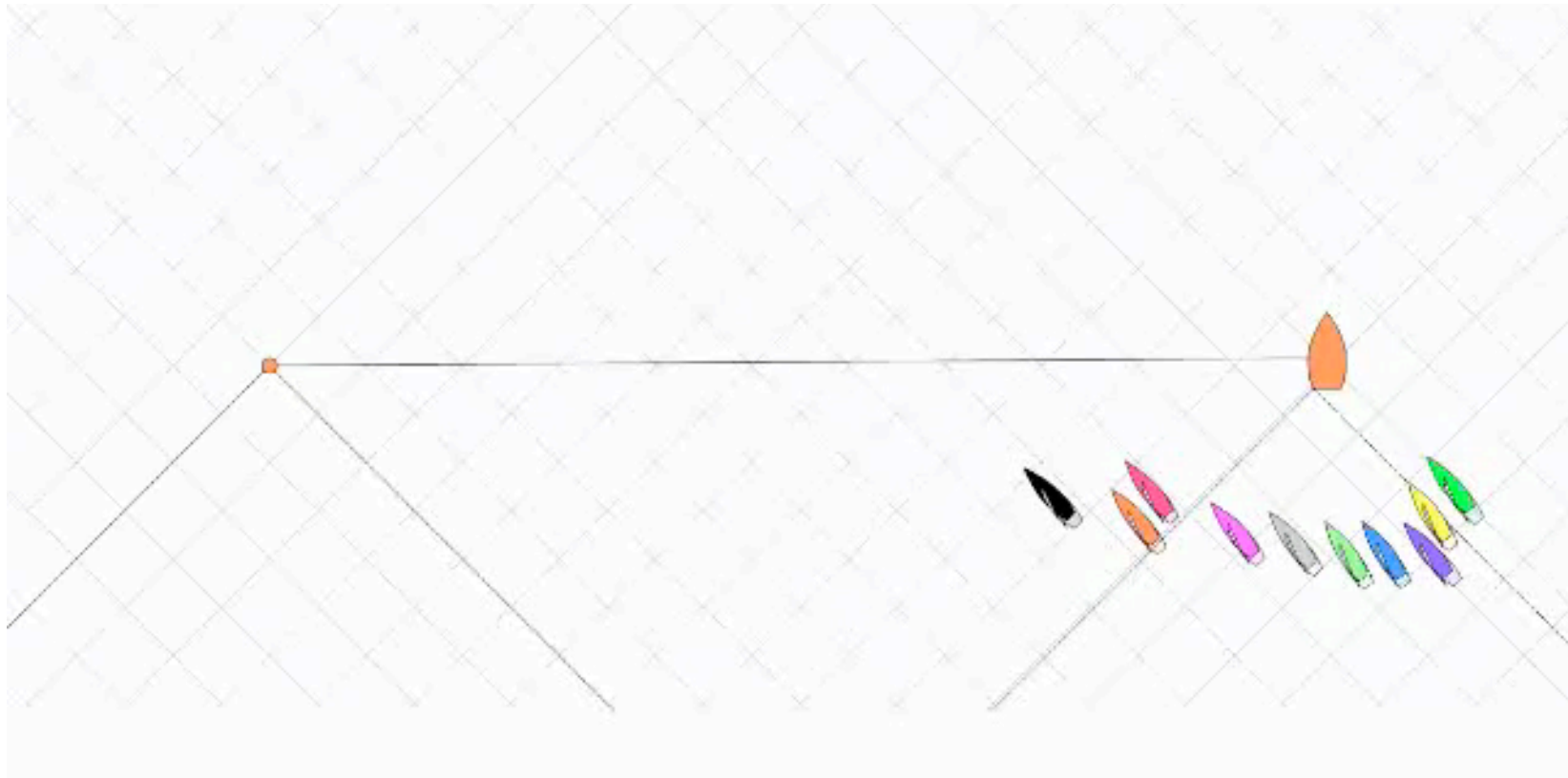
What can we test objectively on the race course?

- 5 questions to ask yourself
- How did you do?

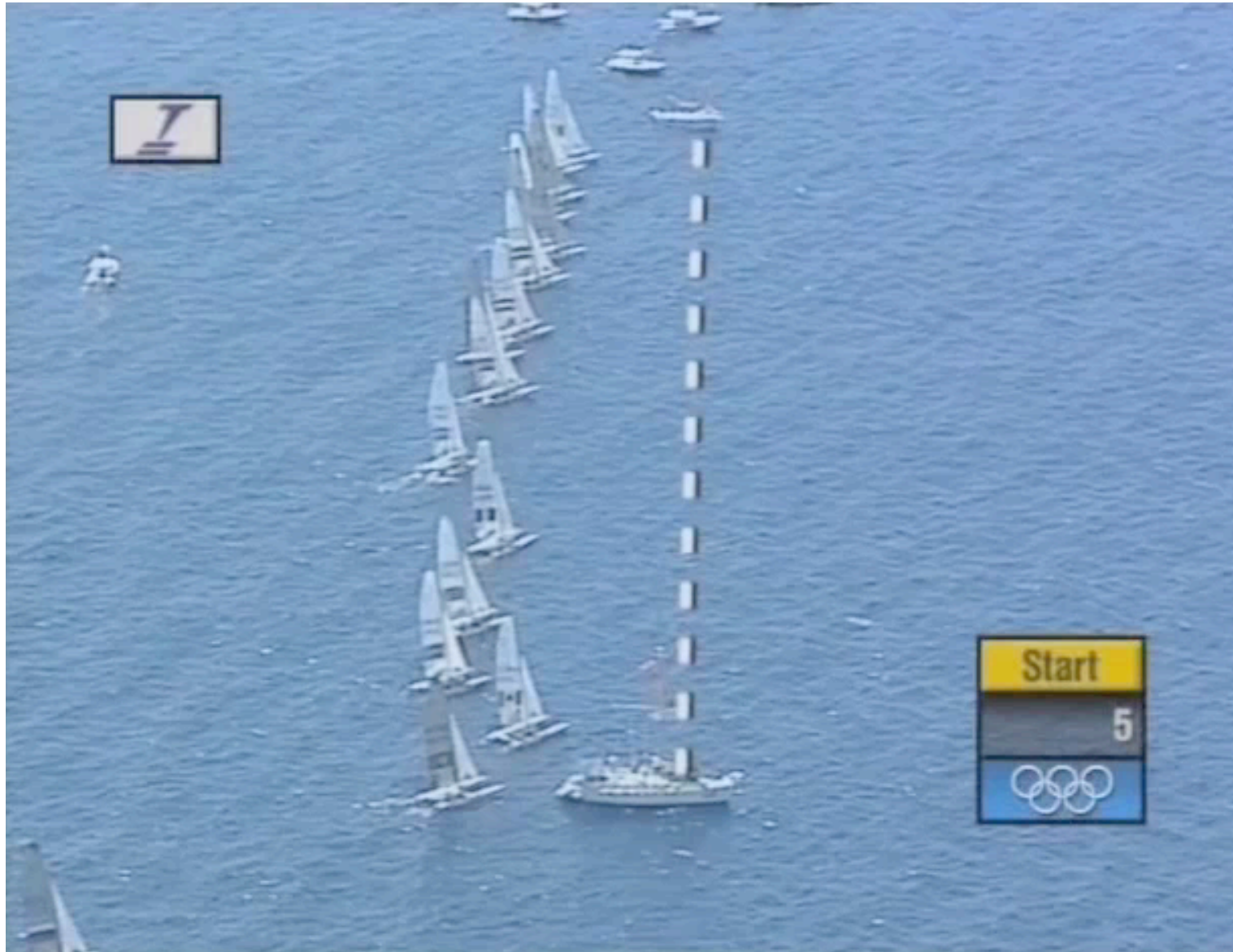
What are we looking for?

- Good spread down the line
- No bunching

Assess the Start Line (max 5 pts)



Assess the Start Line (max 5 pts)



Assess the Start Line (max 5 pts)



Assess the Start Line (max 5 pts)



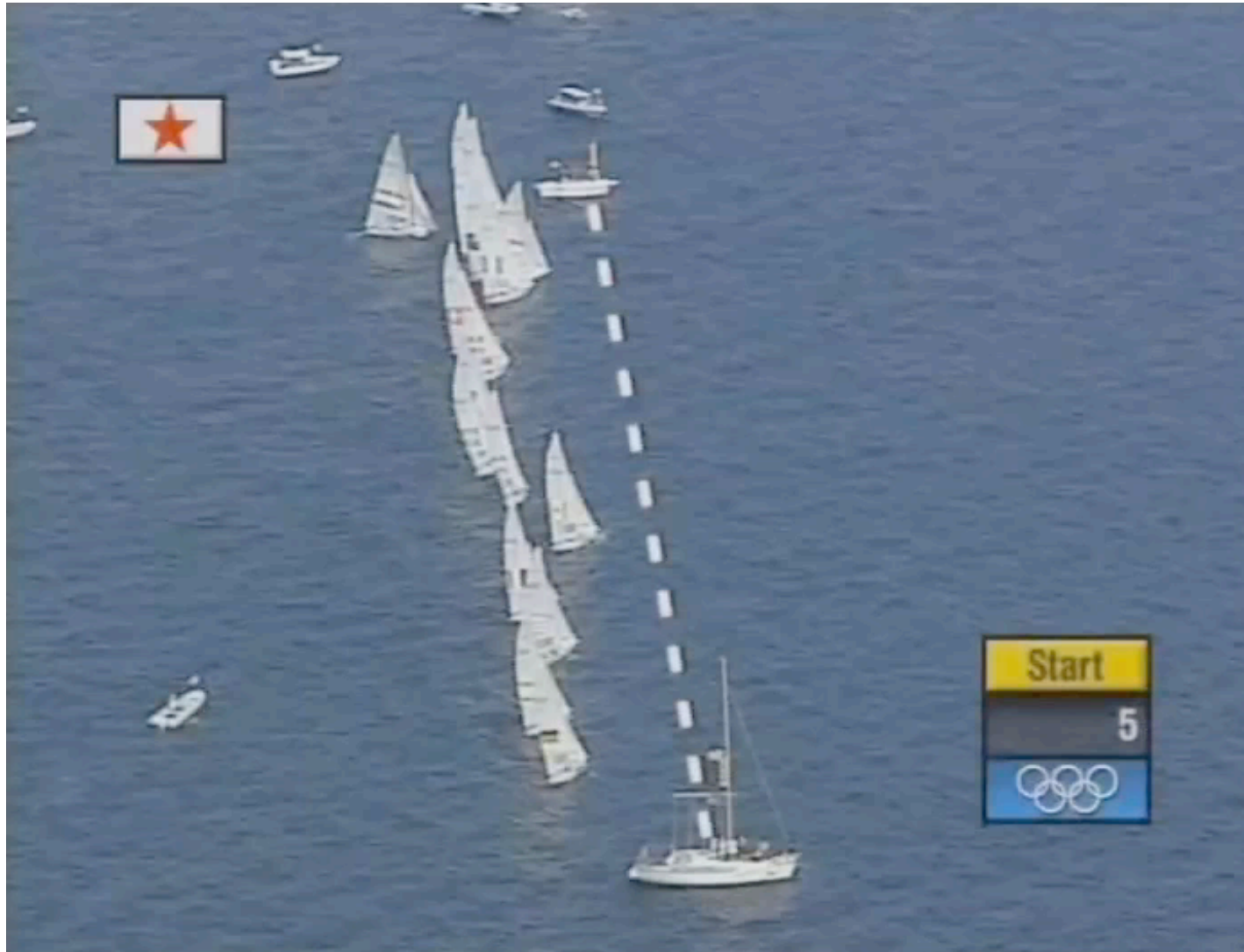
Assess the Start Line (max 5 pts)



Assess the Start Line (max 5 pts)



Assess the Start Line (max 5 pts)



Start line

When the race started there was/were:

- a) an equal distribution of boats along the start line (5pts)
- b) more boats at one end than the other but no bunching (3pts)
- c) some minor bunching at either end (2pts)

What are we looking for?

- Boats on both Gybes
- Boats on each gybe for an equal amount of time

The Run

How much gybing was there?

- a) boats spent 70/30 on each gybe (5 pts)
- b) all boats gybed just once (3 pts)

score each run and calculate the average

Assess the Run (max 5 pts)



Stop Watches



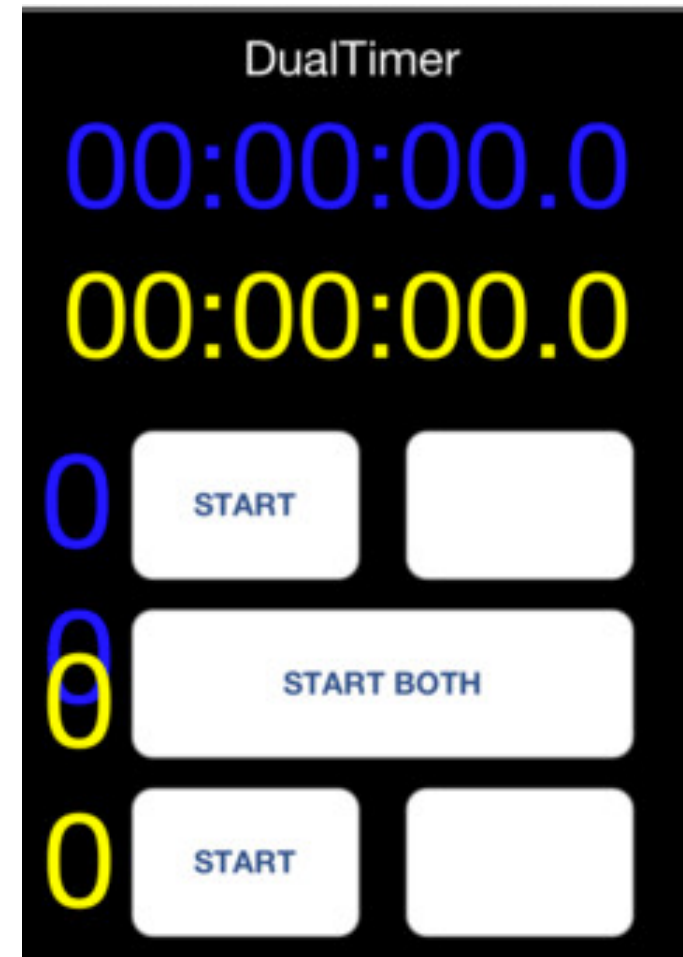
Chess Clock



Chess Stopwatch



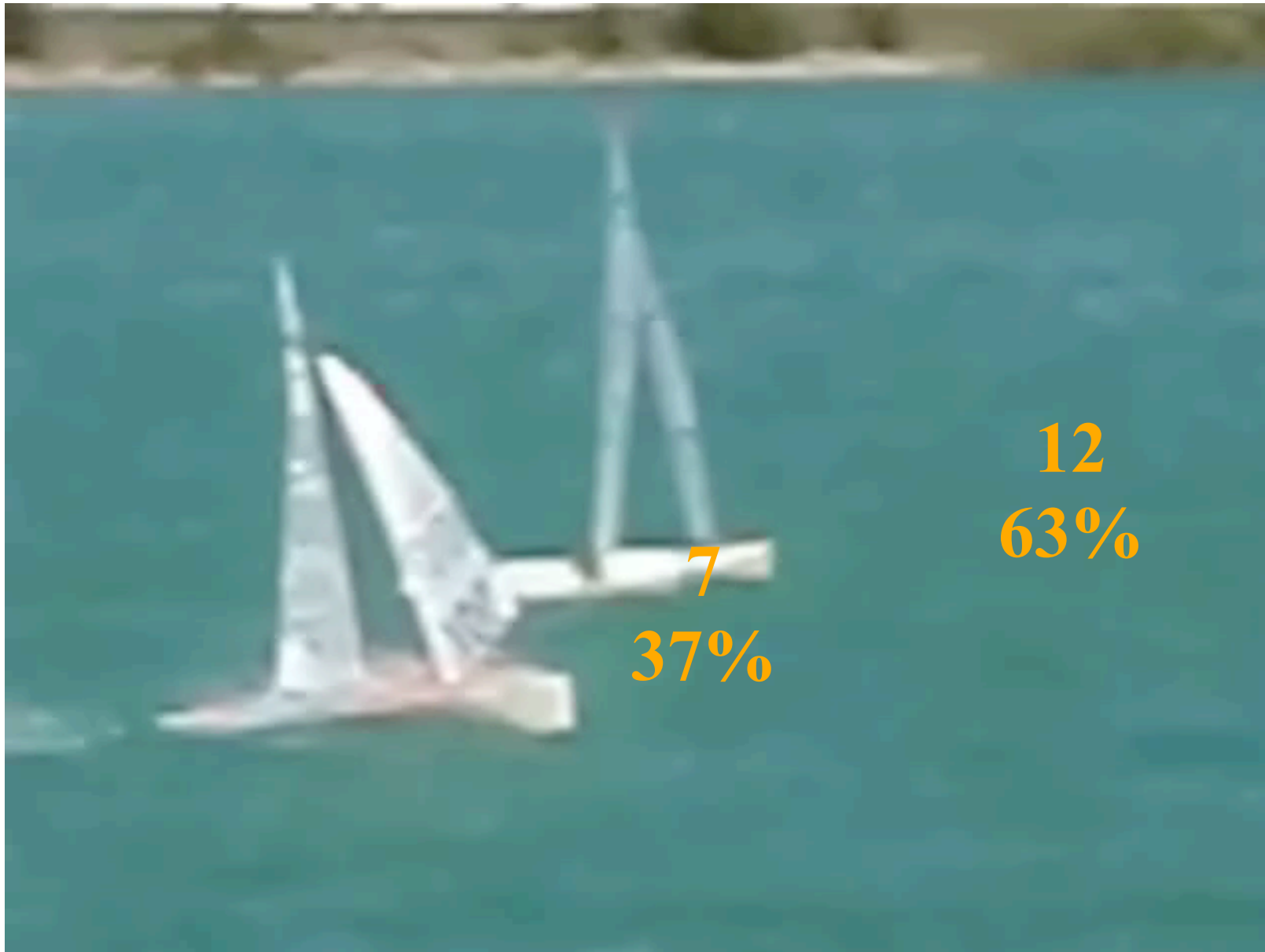
Dual Timer



What are we looking for?

- A good number of boats rounding each gate mark
- An equal split is perfect

The Gate (max 5pts)



The Gate

What was the split of roundings at the gate mark?

a) 60/40 or better (5 pts)

b) 70/30 = (3 pts)

c) 80/20 = (2 pts)

score each gate and calculate the average

What are we looking for?

- At least an idea of the anticipated race duration
- To be within parameters that are desirable

Target Times

The first finisher finished within:

- a) 10% of the target time (5 pts)
- b) 20% of the target time (3 pts)

What are we looking for?

- Clean racing without any issues
- A request for redress may show a problem
- A request for redress that resulted in a change to the scoring does demonstrate a problem

Redress



Redress

Requests for Redress resulted in a change to scoring:

- a) there was one (- 3 pts)
- b) there was more than one (- 6 pts)

Self Evaluation of Race Teams



SELF EVALUATION in Race Management

Self Evaluation of Race Teams

Start line

When the race started there was/were:

- a) an equal distribution of boats along the start line (5pts)
- b) more boats at one end than the other but no bunching (3pts)
- c) some minor bunching at either end (2pts)

The Run

How much gybing was there?

- a) boats spent 70/30 on each gybe (5 pts)
 - b) all boats gybed just once (3 pts)
- score each run and calculate the average*

Self Evaluation of Race Teams

The Gate

What was the split of roundings at the gate mark?

- a) 60/40 or better (5 pts)
- b) 70/30 = (3 pts)
- c) 80/20 = (2 pts)

score each gate and calculate the average

Target Times

The first finisher finished within:

- a) 10% of the target time (5 pts)
- b) 20% of the target time (3 pts)

Redress

Requests for Redress resulted in a change to scoring:

- a) there was one (- 3 pts)
- b) there was more than one (- 6 pts)

Self Evaluation of Race Teams

Assess each race that you run and discuss the score with your team.

Scores		Questions to ask
Gates	No Gates	
20	15	You are a great race team; how do you stay as good?
15-20	10-15	Good; what can you do to improve?
10-15	5-10	Room for improvement; how can that be achieved?
<10	<5	Not the best of races and probably some unhappy customers; review what you remember from your Race Management seminar or sign up for one of the latest.

Self Evaluation of Race Teams

- Involve the whole team in scoring a race
- Get them actively involved in the discussions on how to score higher
- Every one should feel some ownership for making things fair for the competitors
- Plenty of praise for the team's contributions



Race Officials' National Conference

Self Evaluation of Race Teams

Adrian Stoggall & Robert Lamb