

Intellian®

mcmurdo

LOWRANCE

Raymarine®

SIMRAD



AND MORE
INSIDE...

2014 BUYER'S GUIDE

Order online from Europe's leading specialist Marine Electronics Suppliers

ALL CHANGE FOR GARMIN

MASSIVE NEW RANGE FROM GARMIN FOR 2014 - SEE PAGES 3-9 FOR FULL DETAILS!



NEW
FOR 2014

GPSMAP800 & 1000 SERIES MFDs



NEW
FOR 2014

SOUNDERS/FISHFINDERS



NEW
FOR 2014

METEOR300 AUDIO SYSTEM



NEW
FOR 2014

B&G H5000
INNOVATIVE NEW MULTIFUNCTION
INSTRUMENT & AUTOPILOT SYSTEM



INBUILT
AIS

NEW
FOR 2014

ICOM M506 & M73
ICOM LAUNCH NEW FIXED VHF WITH INBUILT
AIS AND PROFESSIONAL GRADE HANDHELD



www.cactusnav.com

www.mesltd.co.uk

Call +44 (0)1752 548 845

Call +44 (0)1179 114 111

Expert installation service • Local branch service • Technical support • Unbiased advice

Next
Day
Delivery*

*Subject to stock availability

Welcome to MES & Cactus Introduction

Contents

Garmin	3
Furuno	10
Raymarine	12
Simrad	13
B&G	14
Lowrance	16
Humminbird	18
McMurdo	20
Spot	21
Vesper	21
Davis	21
Nevada	21
Ocean Signal	11
Navionics	23
C-Map	26
Digital Yacht	28
KVH	34
Intellian	35
Icom	38
Standard Horizon	40
V-Tronix	42
Thrane & Thrane	43
Inmarsat	43
Iridium	43
Thuraya	43
Scanstrut	44
Fusion	46

Dear boat owner,

Thanks for picking up our brochure and giving Cactus and Marine Electronic Services the chance to supply your next item of navigation and communication equipment. In an increasingly competitive market, we know that to stay on top we have to give our customers a great service and a unique offering.

Who we are

Cactus 020 is a privately owned business operating with an office and warehouses in the UK. I started the business after many years in the marine industry, first as an electronics installation engineer and later as a sales and marketing manager for one of the manufacturers, working the UK and overseas. Before I started Cactus, marine electronics were either sold from mail order chandlers who sold at low prices but lacked the specialist knowledge, or the local technical dealers who had the knowledge but tended to be expensive. My idea was to offer both good technical expertise and low prices.

We guarantee not to be beaten on price.

Our price promise guarantees you the best price, even in the event you have seen a price cheaper elsewhere. We try to keep our promise as simple as possible and not have lots of exceptions or caveats, so in a nutshell we will always match or better a price providing the product is from an official source, like for like and it's not a discontinued product or promotion we can no longer source.

We are a real business

We are a bricks and mortar business with premises and a warehouse full of stock. Next time you are looking at online retailers look carefully at their address (if they put it on their site, many don't) thanks to Google maps you can even take a look at their premises. You will see many of the retailers on the net are just one man bands working from home. But why does that matter? Well without premises they can't hold decent levels of stock - in fact most of these companies don't hold stock, and instead they source from distributors who ship the goods for on their behalf. Many have no idea what they are selling and most importantly have no infrastructure in place to deal with returning goods or service work.

Free Installation Advice

Unlike many web retailers our sales team are marine engineers, so as well as being able to guide you through all the options they can talk intelligently about all aspects of the installation. They can tell you the kit and tools you need, positioning antennas and display even how best to run cables. Our advice makes sure you get the right kit and you get the most out of it. If you don't want to install the equipment yourself we offer a comprehensive installation service.

We are there for you if you get a problem

If you have a problem we don't hide behind email address or restrict the times you can call us. If something you have bought from us isn't working to your satisfaction, let us know and we will get it sorted.

We've been in the business a long time

We know the solutions and products that work and ones that don't. Over the years we have supplied equipment to tens of thousands of customers with boats ranging from day sailors to super yachts. Nearly all become repeat customers because they like our pricing, customer service and business approach. We like to build a rapport with our customers and get feedback on how their kit has performed; consequently we are able to give great advice.

We are a solid business, our growth & expansion has been consistent over the years

In an industry where businesses come and go all the time, our strong credit rating and healthy balance sheet, make us one of the safest places to buy from. Remember your product warranty is always with the retailer, so if you get a problem you need to feel safe that the company you bought from is still in business.

We are an authorised dealer for all the brands

We are one of only a few internet retailers that is a dealer and service agent for ALL the major brands. We are not tied to a few suppliers which mean we can offer genuine unbiased advice. Unlike many online stores we are happy to talk you through a problem.

I hope this gives you a brief explanation of why I believe you should buy from us. I also hope what we offer in our catalogue and website is of interest. If you have any questions or queries I would be more than happy to answer them directly through my email address at andrew@cactusnav.com.

Happy Boating,

Andrew Smythe
Cactus 020 Managing Director

Product Colour Code Key

- Communications, Satcom and Sat TV**
- Navigation, Autopilots and Instrumentation**
- Sonar, Echosounders and Fishfinders**
- Electronic Cartography**

Garmin Handheld Navigation

Garmin eTrex 10

Handheld GPS

The eTrex 10 retains the core functionality, rugged construction, affordability and long battery life that made eTrex the most dependable GPS available. Garmin have improved the user interface and added a worldwide basemap, paperless geocaching and added support for spine mounting accessories.

Durable and waterproof, eTrex 10 features the legendary toughness that's built to withstand the elements - whether it's dust, dirt, humidity or water, none of which are a match for this legendary navigator.

KEY FEATURES

- High-sensitivity, WAAS-enabled GPS receiver
- HotFix® satellite prediction with
- GPS and GLONASS
- Easy to read enhanced 2.2in mono display
- Easy to use interface
- Paperless geocaching
- Waterproof standard: IEC 60529 IPX7
- USB interface
- Measures just 5.3 x 10.1 x 3.3cm, weighs 142g
- Up to 25 hours of battery life, 2 x AA

SUPPLIED WITH

USB cable



Garmin Montana 600 Bundle

Handheld GPS Chartplotter with g2 UK & Ireland SD Card

The Montana 600 features a large 4in sunlight-readable TFT touchscreen that offers crystal clear enhanced colours, dual orientation display and high sensitivity HotFix® positioning to track your location, it's easy to see where you are at all times. Durable and waterproof, Montana 600 is built to withstand the elements. The Montana marine bundle includes g2 BlueChart UK & Ireland mapping (HXEU706L) featuring smooth layering and seamless integration of map graphics for easy panning, scrolling and zooming. With rich colours and shading for easy interpretation and clear visibility, it gives boaters greater capabilities on the water.

HOT PRODUCT

KEY FEATURES

- WAAS enabled
- 3-axis compass
- Barometric altimeter
- Waterproof (IEC 60529 IPX7)
- Dual battery system - use either the rechargeable lithium-ion pack or traditional AA alkaline batteries
- microSD™ card slot for optional mapping
- Custom maps compatible
- High speed USB and Serial interface
- Wirelessly share data between compatible units



Garmin GPS72H

Handheld GPS

This rugged GPS features a high-contrast backlit FSTN, 4-level gray scale (120x160 pixel) display, backlit keypad and a high sensitivity receiver for faster signal acquisition. WAAS position accuracy to less than three metres, it's waterproof and it floats!

The GPS72H is also available as marine bundle pack which includes a marine mounting bracket, 12v cigarette lighter cable and carrying case.

KEY FEATURES

- Permanent user data storage - no memory battery required
- 500 waypoints, 50 reversible routes
- Automatic track log - 10 saved tracks
- Anchor drag, arrival, off-course, proximity waypoint and clock alarms
- "Large numbers" option for easy viewing
- 1 MB internal memory for loading MapSource Points of Interest data
- Trip computer
- Built-in celestial tables



Garmin GPSMAP78 & GPSMAP78S

Handheld GPS Chartplotter

The GPSMAP 78 is a rugged unit with crisp colour mapping, high-sensitivity receiver, moulded rubber side grips plus a microSD card slot for loading additional maps - and it floats too! Supplied with an inbuilt worldwide basemap, you can easily add more maps from Garmin's range of detailed marine, topographic and road maps on microSD card. The card slot is inside the waterproof battery compartment, so you don't have to worry about getting it wet.

The **GPSMAP78S** also features an electronic compass, barometric altimeter, unit-to-unit transfer functionality and high speed USB interface.

KEY FEATURES

- 2.6in transfective 65-K colour TFT display
- High sensitivity GPS receiver
- 1.7Gb internal memory
- 2000 waypoints, 200 routes, 200 tracks
- USB (high speed USB on GPSMAP78S) and NMEA0183 interface
- BirdsEye satellite imagery (subscription required)
- Compatible with Custom Maps - transform your own paper and electronic maps into downloadable maps
- Automatic turn-by-turn routing (with optional road maps)
- 20hr battery life, uses 2 x AA batteries



Garmin FORETREX 301 & 401

Wrist Mounted GPS

Cleverly simple, the Foretrex 301 is a slim wrist-mounted GPS navigator perfect for outdoor activities that require the use of both hands. Foretrex 301 combines a high-sensitivity GPS receiver, rugged, waterproof design and USB interface into a lightweight device ideal for hikers, skiers and campers.

KEY FEATURES

- Compact unit - only 75 x 43 x 23mm
- Foretrex keeps track of your path and displays it as a dotted trail on the screen
- TracBack® feature lets you retrace your path back to where you started
- 500 waypoints
- Uses replaceable AAA batteries - up to 18 hours of battery life
- Trip computer
- Sunrise/sunset times
- Hunting and fishing information
- Store waypoints, routes and tracks on your PC or Mac via USB

ALSO AVAILABLE

Foretrex 401 - all the features of the 301, with an electronic compass, barometric altimeter and wireless integration



Garmin GPSMAP620

5.2in Colour Touchscreen Marine/Automotive Chartplotter

Full-featured chartplotter featuring an automotive mode when loaded with City Navigator NT road charts. Preloaded with worldwide satellite basemap of shorelines and other surface features. Marine mode provides 3D "mariner's eye view" above the waterline, "fish eye view" below the waterline and Auto Guidance that searches chart data to suggest the best route (g2 Vision only).

KEY FEATURES

- Turn-by-turn voice prompts
- 1500 waypoints, 50 routes (marine)
- 1000 waypoints, 10 routes (automotive)
- 10,000-point auto track log
- AIS and DSC compatible
- Optional remote antenna
- Inbuilt tide and celestial tables
- Optional flush mount kit



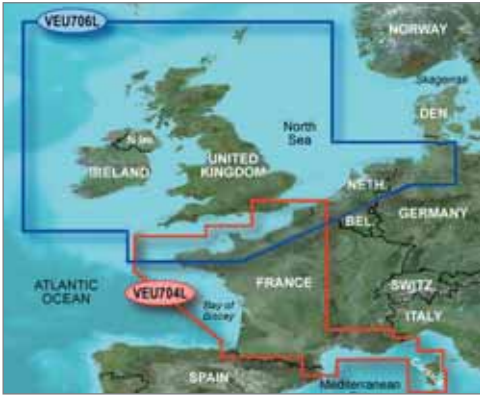
PRICES CHANGE DAILY
VISIT OUR WEBSITES FOR THE LATEST DEALS

www.mesltd.co.uk
Call +44 (0)1179 114 111



Garmin Electronic Cartography

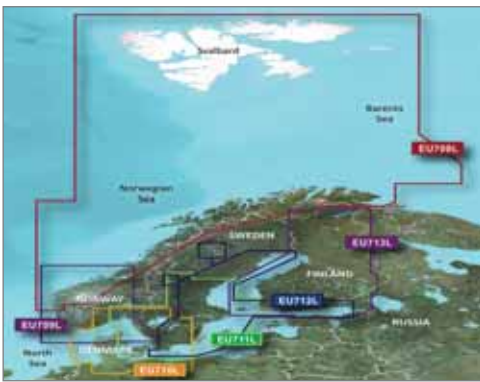
BLUECHART g2 & g2 VISION
UK, Ireland, France Large



BLUECHART g2 & g2 VISION
Mediterranean Large



BLUECHART g2 & g2 VISION
Nordic Large



BLUECHART g2 & g2 VISION
Canada West Large



BLUECHART g2 & g2 VISION
Canada East Large



BLUECHART g2 & g2 VISION
USA West Coast Large



BLUECHART g2 & g2 VISION
USA East Coast Large



BLUECHART g2 & g2 VISION
USA Gulf of Mexico Large



BLUECHART g2 & g2 VISION
USA Alaska Large



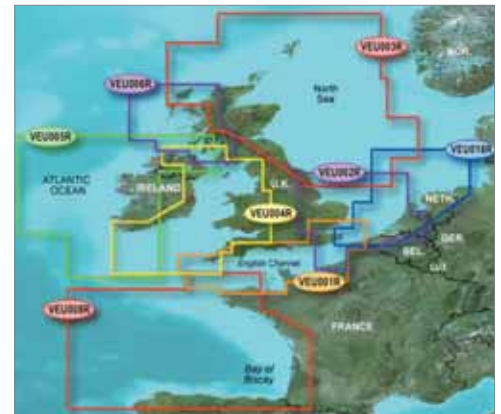
BLUECHART g2 & g2 VISION
USA Great Lakes Large



BLUECHART g2 & g2 VISION
Caribbean Regular



BLUECHART g2 & g2 VISION
UK, Ireland, France Regular



BLUECHART g2 & g2 VISION
Europe South Atlantic Coast Regular



BLUECHART g2 & g2 VISION
Mediterranean Regular



g2 Please note that this is just a small selection of the worldwide Bluechart coverage - please call us for assistance if the cruising area you require is not shown here.

g2
VISION

Garmin Chartplotters & Chartsounders

Garmin GPSMAP 800 & GPSMAP 1000 Series

8in & 10in Multifunction Displays

The colour 8" and 10" GPSMAP 800 and GPSMAP 1000 series include keyed chartplotters plus chartplotter/sonar combos for cruising, sailing or fishing. The chartplotter/sonar combo units have built-in Garmin 1kW sonar, CHIRP, and DownVu™ scanning sonar with CHIRP technology for a nearly photographic view of fish and structure under the boat (xs versions only). Add a compatible CHIRP transducer (sold separately) for crystal-clear sonar images, remarkable target separation and resolution at extraordinary depths – and you can dial into specific frequencies to target certain species of sport fish (xs versions only).

Wirelessly connect to Apple mobile devices for BlueChart Mobile – Plan and view routes on your iPad, iPhone or iPod then wirelessly transfer them to your networked Garmin chartplotter.

KEY FEATURES

- **GPSMAP 800** - 8" SVGA chartplotter
- **GPSMAP 800xs** - 8" SVGA combination chartplotter/sonar
- **GPSMAP 1000** - 10" SVGA chartplotter
- **GPSMAP 1000xs** - 10" SVGA combination chartplotter/sonar
- Select networking capabilities – share features with other compatible GPSMAP units such as radar, GCV 10 DownVu and SideVu sonar, supplemental maps and user data such as waypoints, routes, and tracks
- Optional maps can be shared with multiple networked Garmin displays on the boat
- Supported sailing features include laylines, enhanced wind rose, heading and course over ground lines, and true wind data fields
- Garmin Helm™ support for chartplotter view and control capability via iPhone or iPad
- Add any Garmin marine GMR series radar for enhanced situational awareness
- Optional 50/200kHz transducers to optimise performance in saltwater
- Transmit power: 1kW RMS, 8,000W Peak to Peak (xs versions)
- CHIRP: 600W RMS, 4800W Peak to Peak (xs versions)
- 10Hz GPS – (GPS/GLONASS) provides position and heading updates 10 times per second
- Compatible with BlueChart® g2, BlueChart® g2 Vision® and LakeVu HD Ultra maps (sold separately)
- NMEA 2000® support for autopilot capability and engine data
- Sonar recording and playback using HomePort™ marine planning software (sold separately)
- Two SD™ data card slots for gigabytes of storage

SUPPLIED WITH

Power/data cable, bail mount, flush mount, protective cover

**HOT
PRODUCT**



**NEW
FOR 2014**

Garmin GPSMAP557/557xs

5in Colour Chartplotter/Fishfinder

The GPSMAP 557 and 557xs chartplotters have a crisp 5in VGA display offering perfect legibility both in the dark and in bright sunlight, work at 10Hz to update position and heading 10 times per second, and have a powerful processor with excellent performance, unbeatable map processing and panning.

The GPSMAP 557xs also has a powerful digital sounder with spread spectrum CHIRP technology, with the potential for an output power of 1kW RMS at depths down to 600m (1kW for traditional sonar with HD-ID™ technology and feature 600W CHIRP sonar).



KEY FEATURES

- High-sensitivity 10Hz GPS/GLONASS receiver
- Wireless communication via Wi-Fi and Bluetooth®
- NMEA 0183 and NMEA 2000
- Robust and waterproof (IPX7)
- Preloaded with UK & Ireland charts
- Fast processor for rapid zooming, panning and updating of the image
- 2 SD cards slots - one for BlueChart g2 or g2 Vision and one for user data
- Fusion media integration - control your Fusion stereo via your Garmin

SOUNDER FEATURES (557XS)

- Supports dual frequency mode (50/200kHz) or dual beam mode (77/200kHz)
- Built in highly acclaimed HD-ID™ sonar technology which also includes built-in Spread-Spectrum CHIRP sonar capability
- Up to 1,000 watts (RMS), 8,000 watts (peak to peak), with 1kW transducer
- Depth: 600 metres (with dual freq., 1kW transducer)
- Advanced target searching with CHIRP technology

Garmin GPSMAP751/751xs

7in Colour Touchscreen Chartplotter/Fishfinder

With a crisp 7in sunlight-viewable capacitive multitouch WVGA colour display, both models have a built-in, high-sensitivity 10Hz GPS/GLONASS receiver that updates your position and heading 10 times per second. Features wireless communication via Wi-Fi and Bluetooth, with the option to connect engine, fuel, VHF and autopilot via NMEA 2000, as well as radar.

The GPSMAP 751xs also has a powerful digital sounder incorporating Spread-Spectrum CHIRP technology, with the potential for an output power of 1kW RMS at depths down to 600 m (1kW for traditional sonar with HD-ID™ technology and feature 600W CHIRP sonar).



KEY FEATURES

- Robust and waterproof (IPX7)
- Preloaded with UK & Ireland charts
- Video input
- Fast processor for rapid zooming, panning and updating of the image.
- Fusion media integration - control your Fusion stereo via your Garmin

SOUNDER FEATURES (751XS)

- Supports dual frequency mode (50/200kHz) or dual beam mode (77/200kHz)
- Built in highly acclaimed HD-ID™ sonar technology which also includes built-in Spread-Spectrum CHIRP sonar capability
- Up to 1,000 watts (RMS), 8,000 watts (peak to peak), with 1kW transducer
- Depth: 600 metres (with dual freq., 1kW transducer)
- Advanced target searching with CHIRP technology



PRICES CHANGE DAILY
VISIT OUR WEBSITES FOR THE LATEST DEALS

www.mesltd.co.uk
Call +44 (0)1179 114 111



Garmin Multifunction Displays

Garmin GPSMAP 4000 Series

8.4in, 10.4in & 12.1in Multifunction Displays

These powerful MFDs combine video-quality resolution and luminous colour with the latest sensor and data options. Worldwide satellite imagery enhances the inbuilt basemap, add an optional BlueChart Vision card for high-resolution aerial reference photos which help in navigating tricky harbours and channels or locating places such as marinas, fuel barges or restaurants.

g2 Vision charts allow the units to graphically depict a true 3D "mariner's eye" top-side view with auto-guidance or "fish eye" underwater navigation perspective. Auto Guidance searches the chart features to suggest the best route for navigation.



KEY FEATURES

- **GPSMAP4008** - 8.4in 640x480 pixel VGA
- **GPSMAP4010** - 10.4in 800x600 pixel SVGA
- **GPSMAP4012** - 12.1in 1024x768 pixel XGA
- 4000 waypoints, 50 routes, 300 waypoints/route
- 2 video inputs for onboard cameras, 1 SVGA PC monitor output
- Anchor drag, arrival, off-course, shallow water, deep water, proximity waypoint, clock and battery alarms
- Add radar with optional **GMR** digital antennas with MARPA target tracking
- Radar/chart overlay and split screen modes
- Add sonar with optional **GSD22** digital remote sounder

SUPPLIED WITH

GPS 19x 10Hz, A/V cable, power/data cable, mounting bracket, unit cover, flush mount, bail mount

Garmin GPSMAP 5000 Series

8.4in, 12.1in & 15in Touchscreen Multifunction Displays

The GPSMAP 5000 Series offers all the features of the 4000 Series but with a touchscreen interface that makes navigation as easy as pointing your finger. For even more detail, you can add charts easily using the SD card slots. Keep watch on your engine room or other areas of your vessel by connecting a live video feed using the video input/output with the **GC10** Marine Camera.



KEY FEATURES

- **GPSMAP5008** - 8.4in 640x480 pixel VGA
- **GPSMAP5012** - 12.1in 1024x768 pixel XGA
- **GPSMAP5015** - 15in 1024x768 pixel XGA
- Add radar with optional **GMR** Series digital antennas
- Add sonar with optional **GSD22** digital remote sounder

SUPPLIED WITH

GPS 19x 10Hz, A/V cable, power cable, mounting bracket, unit cover, flush mount, marine grommet kit, NMEA2000 drop cable, NMEA2000 T-connector & terminator kit, NMEA2000 power cable, NMEA0183 cable

Garmin GPSMAP 6000 Series

8.4in & 12.1in Multifunction Displays

The 6000 Series brings blazing-fast map redraw and refresh rates offering near real-time data with Garmin G Motion™ technology. The 6000 Series features a worldwide basemap with high quality satellite images. Optional BlueChart g2 Vision charts add a whole new dimension of exceptional features.

Keep tabs on your engine room or other area of your boat with a live video feed using the video input with the **GC10** Marine Camera.

The 6000 Series easily connects to your network so you can interface with additional displays and add remote sensors, cameras and more.



KEY FEATURES

- **GPSMAP6008** - 8in 1024x768 pixel XGA
- **GPSMAP6012** - 12.1in 1024x768 pixel XGA
- Add radar with optional **GMR** digital antennas with MARPA target tracking
- Radar/chart overlay and split screen modes
- Add sonar with optional **GSD22/24/26** digital remote sounders
- AIS compatible
- 5000 waypoints, 100 routes, 50,000 track points, 50 saved tracks
- 4 NMEA 0183 inputs, 2 NMEA 0183 outputs, 2 video inputs for **GC10** Marine Camera, 1 PC monitor video output

SUPPLIED WITH

GPS 19x NMEA 2000 with pole, flush and under deck mount adapters, front cover, power cable, video cable, NMEA 0183 cable, NMEA 2000 drop cable, 10m NMEA 2000 backbone cable, NMEA 2000 power cable, NMEA 2000 T-connector and terminator kit, bail mount, flush mount kit, marine grommet kit

Garmin GPSMAP 7000 Series

12.1in and 15.5in Touchscreen Multifunction Displays

The 7000 Series has all the features, power and speed of the 6000 Series but with touchscreen control and the choice of larger displays.



KEY FEATURES

- **GPSMAP7012** - 12.1in 1024x768 pixel XGA
- **GPSMAP7015** - 15in 1024x768 pixel XGA
- AIS compatible
- Add radar/chart overlay with optional **GMR** Series digital antennas
- Add sonar with optional **GSD22/24/26** digital remote sounder
- 5000 waypoints, 100 routes, 50,000 track points, 50 saved tracks
- 4 NMEA 0183 inputs, 2 NMEA 0183 outputs
- **GPSMAP7012** - 2 video inputs for **GC10** Marine Camera, 1 PC video output
- **GPSMAP7015** - 4 video inputs for **GC10** Marine Camera, 1 PC video output, 1 PC video input

**HOT
PRODUCT**



Garmin Multifunction Display Peripherals

Garmin Meteor 300

Black Box Marine Audio System

The Garmin Meteor 300 black box marine audio system, controlled through your chartplotter, streams music across your boat. Music flows to three zones from 4x50W speaker outputs, 1 pre-amp output, and 1 dual mono subwoofer output. Inbuilt AM/FM radio tuner and Bluetooth streaming and control. Easy plug-and-play NMEA 2000 connections to chartplotter and optional wired remote.

KEY FEATURES

- Control tuner, volume and media from a remote location on the boat using your chartplotter or optional wired remote
- Bluetooth wireless music streaming and control
- Easy to use - quick access to media and volume
- Charge and control compatible smartphones and media players
- Supports iPhone, iPod, Android devices and USB media players
- 2 auxiliary ports - connect external audio sources or add the included panel-mount 3.5mm socket
- Display data such as wind direction, depth, SOG and more
- Optional docking station charges and protects your mobile device
- Compatible with GPSMAP 527, 721, 6000, 7000, 8000 Glass Bridge (Feb 2014), 800 and 1000 series (June 2014)

SUPPLIED WITH

Meteor 300 to NMEA 2000 (1m) cable, NMEA 2000 T-connector, panel mount USB socket with 1m cable, panel mount RCA 3.5mm socket with 2m cable, Meteor 300 mounting kit, power/speaker wire harness

NEW FOR 2014



Optional Docking Station



Optional Wired Remote

Garmin xHD Digital Radar

High Definition Digital Radar

Garmin xHD next-generation digital radar offers high resolution imagery and intuitive, advanced features that make them easy to use. Dynamic Auto Gain and Dynamic Sea Filter continually adjusts to your surroundings providing optional performance in varying conditions. Data is transmitted over the Garmin Marine Network to any Garmin MFD.



KEY FEATURES

- Narrow beamwidth
- Improved robustness
- Quieter operation
- Sharper images, better target separation
- No complex user settings - easy to install and use
- 24/48rpm dual speed on radome antennas
- 24/30rpm dual speed on open array antennas
- Minimum range - 20m

NEW FOR 2014

Tech info

Garmin Radar Scanners

When ordering your radar system you'll need to specify the antenna you require -

Part No.	Size	Power	Beam	Type	Range
GMR 18HD	18in	4kW	5°	RD	36nm
GMR 18xHD	18in	4kW	5.2°	RD	48nm
GMR 24HD	24in	4kW	3.6°	RD	48nm
GMR 24xHD	24in	4kW	3.7°	RD	48nm
GMR 404xHD	48in	4kW	1.8°	OA	72nm
GMR 406xHD	72in	4kW	1.18°	OA	72nm
GMR 604xHD	48in	6kW	1.8°	OA	72nm
GMR 606xHD	72in	6kW	1.1°	OA	72nm
GMR 1204xHD	48in	12kW	1.8°	OA	72nm
GMR 1206xHD	72in	12kW	1.1°	OA	72nm

RD - Radome Antenna (enclosed)

OA - Open Array

Garmin GCV 10

Black Box Sonar

The Garmin GCV 10 adds both SideVü™ and DownVü™ with CHIRP scanning sonar technology to your compatible Garmin echoMAP™ or GPSMAP® series. CHIRP technology sweeps through a range of frequencies to give you an ultra-clear sonar picture of objects, structure and fish that pass below and to the sides of the boat. Together with your combo's HD-ID™ sonar, you get an excellent search and confirmation tool for advanced fishfinding in both fresh and saltwater.

KEY FEATURES

- DownVü and SideVü with CHIRP technology
- Compatible with echoMAP 70 series, GPSMAP 7x1, 820 and 1020 series
- Includes 12-pin DownVü/SideVü transducer with fast response temperature sensor
- 3 network ports for networking with multiple units

NEW FOR 2014



Garmin AIS300

Black Box AIS Receiver

This affordable NMEA2000 compatible black box AIS receiver alerts you to potential collisions with other AIS-equipped vessels in your vicinity. It integrates with a Garmin chartplotter and VHF radio to enable automatic AIS target calling and to display AIS target data directly on the chartplotter screen.



KEY FEATURES

- Class A and Class B reception
- Closest Point of Approach (CPA) alarm
- 12-volt and 24-volt boat systems
- NMEA 0183 output with selectable speed
- Inbuilt passive splitter enables one VHF antenna to serve both the AIS 300 and any VHF radio

SUPPLIED WITH

Power/data cable, 2m NMEA2000 cable, NMEA2000 T-connector, VHF interconnect cable, mounting kit

Garmin AIS600

Black Box AIS Transceiver

Receive and transmit AIS data. Inbuilt active splitter allows one VHF antenna to serve both the AIS 600 and VHF radio with minimal signal loss. The AIS 600 connects to your existing Garmin marine network and is controlled via the chartplotter, so all the information you need will be right at your fingertips.

KEY FEATURES

- ClearTrack™ technology ensures no interruption of AIS traffic position while the VHF radio is in use
- Integrates with chartplotters & VHF via NMEA2000
- Call With Radio function - initiate a call to any MMSI target directly from the chartplotter

SUPPLIED WITH

GPS antenna, pole & surface mount, power cable, SRM cable, 2m NMEA2000 cable, NMEA2000 T-connector, USB cable, 2m VHF interconnect cable, PC/Software CD, mounting kit

HOT PRODUCT



Garmin GC10

Marine Camera

Durable and waterproof with a small unobtrusive design in a rugged housing that makes it easy to mount almost anywhere on your boat.



KEY FEATURES

- Can be used with on-board TV, video monitors or chartplotters with video input
- No need to add separate hardware to view feed
- Standard-image and reverse-image models
- Automatic infra-red functionality

Garmin GFS10

Fuel Sensor (Petrol Only)

Add fuel tracking to your Garmin multifunction display and optimise your fuel economy.



KEY FEATURES

- 10-22v
- Unlike other fuel sensors it will measure fuel level when connected to an existing analogue fuel gauge or resistive fuel tank sensor
- Flow rate 2 - 50 Gallons per hour per engine
- Data transfer via CANet or NMEA 2000



PRICES CHANGE DAILY
VISIT OUR WEBSITES FOR THE LATEST DEALS

www.mesltd.co.uk

Call +44 (0)1179 114 111



Garmin Instruments, Autopilots & VHF Radios

GARMIN GMI 20

Digital Marine Instrument Display

The GMI 20 digital marine instrument display is perfectly designed for both power and sail vessels, clearly showing depth, speed, wind and over 100 other marine and vessel parameters. Screens can be set to auto-scroll, cycling between pages automatically. Default profiles can be customised for powerboat, sailboat, fishing, engine/fuel, plus several other user-specified profiles. Power is supplied by the NMEA 2000 network. The GMI 20 also features a dedicated race timer that counts down and counts up, with an internal beeper. Included are two bezels which allow you to match the GMI 20 with the GPSMAP 500/700 series, GPSMAP 8000 Glass Helm or legacy Garmin chartplotters.

KEY FEATURES

- Shows depth, speed, wind and 100+ marine and vessel parameters
- Large, bright 4" colour glass-bonded lens display with anti-glare finish
- Easy to read from a distance, 170° viewing angle
- Enhanced night time readability with backlight dimmer and choice of colour schemes
- Enhanced daylight readability with new high contrast colour option
- Compatible with new gWind range of standard, wireless and race wind transducers

NEW FOR 2014



SUPPLIED WITH

Black bezel, Silver/black bezel, protective cover, flush mount gasket and hardware, NMEA 2000 power cable, NMEA 2000 drop cable, NMEA 2000 T-connectors and terminators



NEW gWind Sensor



GWS 10 Wind Sensor



GPS 19x GPS Sensor



GFS 10 Fuel Sensor

Garmin GHP 10

Powerboat Autopilot System

Powerful, easy to use autopilot, suitable for all types of hydraulically steered power boats. The control unit integrates via NMEA2000, so heading data can be shared with other devices including chartplotters. Up to three GHC 10 controls can be interfaced, ideal for multiple helm station boats.

KEY FEATURES

- GHP 10V version for Volvo Penta IPS systems
- No rudder feedback unit required
- Gyro-stabilised compass
- Shadow Drive™ technology disengages autopilot if the helm is turned and re-engages when a steady course is held
- Can steer in reverse



HYDRAULIC REVERSING PUMPS AVAILABLE

- 1.2L (up to 160cc, 10in³)
- 2.0L (160-400cc, 10-24in³)
- 2.1L (160-400cc, 10-24in³), engine size 400hp+

SUPPLIED WITH

GHC 10, course computer, gyro compass, drive unit, interconnect cable, buzzer, power cable, NMEA2000 drop cable, NMEA2000 T-connector

Garmin VHF 100i & VHF 200i

Fixed DSC VHF Radios

Now also available in black. With a large backlit 3.2in display, Class D DSC functionality, rotary volume, squelch and channel selection knobs. The **VHF 200i** also offers two-way hailer plus automatic and manual foghorn signals if connected to a compatible horn speaker and NMEA 2000 compatibility.

KEY FEATURES

- Position tracking: locate and monitor up to three other boats
- LOCAL receiver mode improves performance in busy port environments
- Ergonomic fist mic with built-in speaker
- Programmable international channels
- ATIS and private channel customisation options
- **200i** - Supports GHS 10i second station
- Waterproof to IPX7 standard
- Easy front flush-mounting option
- NMEA 0183 compatible
- Automatic power-on when boat starts



SUPPLIED WITH

Fistmike, power cable, hailer/NMEA cable (200i), mounting bracket, flush mount gasket, protective cover

Garmin GHP 12

Sailboat Autopilot System

The GHP 12 is designed to suit most 20 to 70ft sailboats with linear actuated steering systems with a choice of two drives (supplied separately).

KEY FEATURES

- Steer to GPS (requires GPS input)
- Heading hold, wind hold, step turn, tack/gybe
- Integrates with GWS 10 wind sensor or compatible NMEA windvanes

LINEAR ACTUATORS AVAILABLE

- Class A Drive Unit - up to 28,500lbs (13 tonnes) displacement
- Class B Drive Unit - up to 79,000lbs (36 tonnes) displacement

SUPPLIED WITH

Course computer, electronic control unit, Rate Gyro CCV, interconnect cable, buzzer, power cable, NMEA2000 drop cable, 2 x NMEA2000 T-connectors.



Garmin VHF 300i & VHF 300i AIS

Fixed DSC VHF Radios

Multi-station transceiver with a two-way hailer system and a voicemail feature that lets you pre-record a 15-second message and send to any DSC radio. Replay the last 90 seconds of any incoming voice transmission at the touch of a button. The **VHF 300i AIS** has an inbuilt dual channel AIS receiver which simultaneously receives Class A and B AIS signals.

KEY FEATURES

- 30w hailer when connected to compatible horn speaker
- Position tracking: locate and monitor up to three other boats
- GHS 10i handset microphone with 2in LCD display
- Rotary key and three soft buttons for dynamic controls
- Multi station support
- Intercom function
- NMEA 0183 and 2000 compatible
- Waterproof to IPX7 standard



SUPPLIED WITH

GHS 10i handset microphone, active speaker, power cable, 10m deck cable

Garmin Fishfinders & Sonar

Garmin echo 101

4in Mono Single Beam Fishfinder

Garmin's exclusive HD-ID target tracking technology brings enhanced separation and definition of images on the echo 101's fast refreshing 4in grayscale display.

KEY FEATURES

- Compact design
- Garmin HD-ID™ technology
- 200kHz, 200 watts (RMS)
- Beam width to 60°
- Max Depth 450m (1500ft)

NEW FOR 2014



SUPPLIED WITH

Tilt/swivel mount, transducer, trolling motor clamp and transom mount

Garmin echo 151 & 151dv

4in Mono Dual Beam Fishfinder

Dual-beam technology at single-beam price! Scan to depths of 480m in fresh water. HD-ID target tracking technology provides you with better separation and definition of images. New for 2014, the echo 151dv features Garmin's revolutionary DownVu™ scanning sonar for a nearly photographic view under your boat.

KEY FEATURES

- 200/77/50kHz
- 200 watts (RMS)
- Beam width to 120°
- Max depth 480m (1,600ft)

NEW FOR 2014



SUPPLIED WITH

Tilt/swivel mount, transducer, trolling motor clamp and transom mount

Garmin echo 201 & echo 201dv

5in Mono Dual Beam Fishfinder

Combines the features of the echo 151 with a larger 5in grayscale display. The new echo 201dv features Garmin's revolutionary DownVu™ scanning sonar.

KEY FEATURES

- 200/77/50kHz
- 200 watts (RMS)
- Max depth 480m (1,600ft)
- Beam width to 120°

NEW FOR 2014



SUPPLIED WITH

Tilt/swivel mount, transducer, trolling motor clamp and transom mount

Garmin echo 301c

3.5in Colour Dual Beam Fishfinder

Combines the performance and features of the echo 201 with the compact design of the echo 151. The new echo 301dv includes DownVu™ scanning sonar.

KEY FEATURES

- 200/77/50kHz
- 200 watts (RMS)
- Max depth 480m (1,600 ft)
- Beam width to 120°

NEW FOR 2014



SUPPLIED WITH

Tilt/swivel mount, transducer, trolling motor clamp and transom mount

Garmin echo 501c, 551c & 551dv

5in Colour Dual Beam Fishfinders

Range of colour dual frequency fishfinders ideal for both shallow and deep water. HD-ID target tracking technology brings enhanced separation and definition of images. Smooth Scaling™ technology means you won't lose sight of the sonar history as the unit changes depth ranges and allows you to rewind your sonar history in order to ensure that you haven't missed a thing. The echo 551c boasts a video-quality 640x480-pixel VGA screen. The new echo 551dv also features Garmin's revolutionary DownVu™ scanning sonar.

KEY FEATURES

- 200/77/50kHz, 500 watts (RMS)
- Max depth 700m (2,300 ft)
- Beam width to 120°
- echo 501c - 5in colour QVGA 234 x 320 pixel display
- echo 551c - 5in colour VGA 480 x 640 pixel display
- echo 551dv - 5in colour VGA 480 x 640 pixel display, DownVu

SUPPLIED WITH

80/200kHz transom transducer, power/data cable, mounting bracket, flush mount hardware



NEW FOR 2014

Garmin echoMAP 50s & echoMAP 50dv

5in Colour Chartplotter/Fishfinder

A space-saving combination chartplotter that is suitable for use in most small boats. In addition to a high performance plotter preloaded with UK & Ireland charts it has an HD-ID™ sounder that gives extra sensitive fish targeting, clearly separating fish from structures. The sounder signals are co-ordinated with the position of the boat, creating waypoints on the map so that you can easily find your way back. New for 2014, the echoMAP 50dv model also features Garmin's revolutionary DownVu™ scanning sonar for a nearly photographic view under your boat.

KEY FEATURES

- Internal, high-sensitive 10Hz GPS/GLONASS receiver
- Wireless communication via Wi-Fi
- 5,000 waypoints and 100 routes
- NMEA 0183 compatible
- 2 SD cards slots - one for BlueChart g2 and one for user data
- Bracket, flush or flat mounted
- Sounder output: up to 500 watts (RMS) 4,000 watts (peak to peak)
- Depth to 450 metres (with 500 watt transducer)
- UltraScroll®: rapid updating of the sounder image
- Sonar recording
- AutoGain
- Split-screen zoom for optimum reading of the bottom and fish at close quarters
- Alarms relating to fish size, water depth and voltage



NEW FOR 2014

Garmin echoMAP 70s & echoMAP 70dv

7in Colour Touchscreen Chartplotter/Fishfinder

The echoMAP 70s is a high-performance plotter preloaded with UK & Ireland charts with an HD-ID™ fishfinder. The sounder signals are co-ordinated with the boat's position to create 3D waypoints on the map so you can easily find your way back to your favourite locations. The echoMAP 70s has a crisp 7" touchscreen that is very easy to read, even in strong sunlight, and can communicate wirelessly via Wi-Fi. New for 2014, the echoMAP 70dv model also features Garmin's revolutionary DownVu™ scanning sonar for a nearly photographic view under your boat.

KEY FEATURES

- Internal, high-sensitive 10Hz GPS/GLONASS receiver
- Advanced echo HD-ID™ fishfinder
- 5,000 waypoints and 100 routes
- NMEA 0183 compatible
- 2 SD cards slots - one for BlueChart g2 and one for user data
- Bracket, flush or flat mounted
- Sounder output: up to 500 watts (RMS) 4,000 watts (peak to peak)
- Depth to 450 metres with 500 watt transducer
- UltraScroll®: rapid updating of the sounder image
- Sonar recording
- AutoGain
- Split-screen zoom for optimum reading of the bottom and fish at close quarters
- Alarms relating to fish size, water depth and voltage



NEW FOR 2014



PRICES CHANGE DAILY
VISIT OUR WEBSITES FOR THE LATEST DEALS

www.mesltd.co.uk
Call +44 (0)1179 114 111



FURUNO MFD8 & MFD12

NAVNet 3D 8.4" & 12.1" Multifunction Displays

A groundbreaking navigation system with Full Time 3D chart rendering - choose traditional 2D top-down view or pan/zoom the chart to any 3D angle instantly. The cutting edge "Time Zero" technology gives instant chart zoom, panning and display mode changes seamlessly with no lag.

See all the information you want - radar overlay, AIS, depth soundings etc. Choose the charts you want to view - raster, vector or combine them with FURUNO's Satellite Photofusion charts.



HOT PRODUCT

KEY FEATURES

- 8.4" 640x480 pixel or 12" 800x600 pixel TFT displays
- Jeppesen C-Map, Navionics DataCore or Raster Charts
- Head up, course up, North up, relative or true motion modes
- True 3D environment for a more instinctive chart presentation
- Simple, intuitive operation with Rotokey & Scrollpad
- High-resolution satellite photography can be fused with raster or vector chart information, viewable in 2D or 3D
- Ultra High Definition (UHD) Digital Radar
- 3D chart-radar overlay (requires heading source)
- FURUNO Digital Filter (FDF) Fish Finder



FURUNO TZTouch9 & TZTouch14

NAVNet 9" & 14" Multi-Touch Multifunction Displays

The world's first Multi Touch chart plotter, with custom multi touch gestures, like pinch to zoom, orientation switching, simple flipping from 2D to 3D views and a customisable gesture which make the units incredibly easy to use.

Building upon FURUNO's groundbreaking TimeZero architecture, NAVNet TZT displays can be used with Navionics, C-MAP and Raster charts, all presented in stunning 3D including satellite photography and depth shading overlays.



HOT PRODUCT

KEY FEATURES

- RotoKey™ control
- Black Box model with a range of multi touch monitors
- Integrate with Ultra High Definition Radars, Digital Fish Finders, GPS, AIS, Weather Stations, Cameras and fuel tank systems etc
- View and control the displays using iPad and iPhone with the free NAVNet Viewer and NAVNet Remote app
- Wireless hotspot connectivity - download updates and real-time weather data via the internet
- CAN bus, LAN, USB, DVI-D Video Output, 2 x NTSC/PAL Video Input, Line Out and MIC In ports



FURUNO NAVNet 3D BB

NAVNet 3D Black Box System

If NAVNet 3D sounds right for you, but you want a bigger display, then the NAVNet 3D BB system offers all the features of the MFD8/MFD12, linking a powerful NAVNet3D black box processor with a range of LCD displays, from 12.1" up to 19", controlled via a separate dedicated control keyboard.



KEY FEATURES

- 12.1" SVGA marine monitor, 800x600px
- 15" XGA marine monitor, 1024x768px HD
- 17" SXGA marine monitor, 1280x1024px
- 19" SXGA marine monitor, 1280x1024px
- Dedicated control keyboard
- Compatible with NAVNet 3D digital sounder, radar, AIS, satellite compass, weatherfax etc.

FURUNO NAVNet

Upgrade Modules

These optional upgrade modules enable you to add powerful features to your NAVNet 3D system to suit your exact needs.



MODULES AVAILABLE

- **DFF1** Digital Sounder Module
- **FA30** AIS Receiver
- **FA50** Class A & B AIS Transponder
- **FAX30** Weatherfax & Navtex Receiver
- **PG700** Integrated Heading Sensor
- **SC30, SC50 & SC110** Satellite Compasses
- **BBWX1** Sirius Satellite Weather Receiver (US only)

FURUNO NAVNet UHD RADAR

Digital Radar



KEY FEATURES

- Compatible with NAVNet 3D and NAVNet TZT
- 30 Target Tracking (ARPA)
- Antenna rotation speed 24, 36 or 48rpm
- Enhanced auto tune, gain and anti-clutter controls
- 48rpm rotation for HSC and river applications
- Adaptive rotation speed according to pulse length
- Accurate radar overlay on both 2D and 3D charts



Tech info

FURUNO UHD Radar Scanners

When ordering your radar system you'll need to specify the antenna you require -

Part No.	Size	Power	Type	Range
DRS2D	19"	2.2kW	RD	24nm
DRS4D	24"	4kW	RD	36nm
DRS4A	3.5ft	4kW	OA	48nm
DRS6A	4ft	6kW	OA	64nm
DRS12A	4ft/6ft	12kW	OA	72nm
DRS25A	4ft/6ft	25kW	OA	96nm

RD - Radome Antenna (enclosed)

OA - Open Array



FURUNO RD33

4.3" Colour Data Display

Display data from interfaced equipment such as GPS, navigation, autopilot, instruments, engine info and more. The bright, crisp display is easy to read. Various display modes are available including Speedometer, Highway and Text. The RD33 can also be added to a NAVNet 3D system to display nav data from the CAN bus network.



KEY FEATURES

- Large characters and high resolution sunlight viewable display
- Customisable display format from full-screen to a 6-way split screen layout
- Supports both CAN bus and NMEA0183 interfaces - requires cable
- Two CAN bus input/output ports incorporated for daisy chain networking
- Internal NMEA0183/CAN bus conversion capability available
- Simultaneous alarm monitoring capabilities for Water Temp, Depth, Speed, Arrival, Anchor, XTE, Trip, Odometer, Timer and Countdown Timer, Roll & Pitch, Wind Speed, Wind Direction, and Battery

FURUNO GP33

4.3" Colour GPS

Provides accurate and reliable position fixing and displays navigation data in a wide variety of numerical and graphical formats.

KEY FEATURES

- Store up to 10,000 marks/waypoints, 100 routes and 3,000 track points
- 7 display modes inc 2 user customised
- NMEA0183 and NMEA 2000

SUPPLIED WITH

12 channel SdGPS antenna



FURUNO NX300D

Dual Mode Navtex Receiver

One of our most popular products, this compact unit has a high contrast 4.5" display and receives weather reports and navigation alerts worldwide, within 200-400nm of shore.

KEY FEATURES

- Dual frequency (518/490kHz)
- Printout available via PC
- Can be used as a Nav data repeater
- Low power consumption



FURUNO M1623

6" LCD Radar

BEST SELLER! A great value high contrast, low power consumption LCD radar which gives detailed images of coastline and targets at short ranges thanks to narrow pulselengths and dual IF bandwidths.

In Watchman mode, the antenna is stopped, the screen displaying nav data only. The radar wakes up at a specified time interval and operates for 1 minute. If a target enters the guard zone, an alarm sounds and the radar goes into its normal operating mode.

KEY FEATURES

- 15" 2.2kW radome, max range 16nm
- Excellent screen clarity, day and night modes
- 12 range scales
- EBL, VRM, TLL output (Target Lat/Long), Cursor Lat/Long input/output, Echo Trail, Guard Zone Alarm
- Interface with GPS and chart plotter
- Waypoints displayed as "lollipop" marks
- Automatic receiver tuning, sensitivity and anti-clutter controls

SUPPLIED WITH

2.2kW 15" radome antenna & 10m cable



EDITOR'S CHOICE

FURUNO GP1670 & GP1870

5.7" & 7" GPS C-Map 4D Chartplotters

Compact, powerful chartplotters with internal GPS for recreational and fishery boats which provide the user with powerful, fast performance and intelligent features. The bright LCD display gives excellent readability even in direct sunlight.

EDITOR'S CHOICE



KEY FEATURES

- Bonded LCD to ensure a crystal clear display in all conditions
- Clear visibility even when wearing polarised sunglasses
- Split screen display - dual range 2D chart, 3D chart, nav data display
- Satellite photo overlay function
- Supports detailed C-MAP 4D charts (locally supplied with an SD card)
- RotoKey™ revolving menu and familiar point-and-click operation
- Internal memory: Waypoint/Track 30,000 points, Route 1,000 routes
- Also available - **GP1670F** & **GP1870F** dual frequency chart/fishfinders

FURUNO FCV627 & FCV587

5.6" & 8.4" Dual Frequency Colour Fishfinders

High performance fishfinders equipped with FURUNO's latest technology: Bottom Discrimination which provides an at-a-glance recognition of bottom form with four types of graphical displays (Rocks/Sand/Gravel/Mud) and ACCU-FISH™, a unique fish size analyser based on the latest digital technology.



KEY FEATURES

- **FCV627** - 5.6" display, 600W output
- **FCV587** - 8.4" display, up to 1kW output
- White Line feature - Discriminate fish lying near the bottom
- Configurable Alarm function (depth, fish echoes, etc.)
- Post-processing Gain Control applied to all echoes displayed on the screen
- TLL (Target Lat/Lon) output - share and display information on a chartplotter
- Fast transmission rate of 3,000 PRR per minute (at 5m depth range)
- Bright 800 cd/m2 LCD gives excellent readability, even in bright sunlight
- Bonded LCD to ensure a crystal clear display in all conditions
- Clear visibility even when wearing polarised sunglasses

FURUNO LS4100 & LS6100

5" & 6" LCD Black and White Fishfinders

Easy to use 50/200kHz dual frequency fishfinders with either a 5" (**LS4100**) or 6" (**LS6100**) high resolution mono display. 300W RMS power, maximum depth 500m.

KEY FEATURES

- White Line and "Sea-Through" technology
- Bottom lock fish alarm
- Speed and wind data if interfaced with relevant sensor
- Mini-navigator feature provides 12 "goto" waypoints with programmable names

SUPPLIED WITH

Transducer must be specified when ordering



PRICES CHANGE DAILY
VISIT OUR WEBSITES FOR THE LATEST DEALS

www.mesltd.co.uk

Call +44 (0)1179 114 111



Raymarine Navigational Equipment

Raymarine Multifunction Displays



A SERIES

- 5.7in and 7in touchscreen displays
- 50 Channel internal GPS
- Navionics Silver charts included
- Navionics Gold and Platinum+ compatible
- Fusion Marine Stereo integration
- Multifunction display with chart, radar and fuel management functions
- Also available with a dual frequency 600w ClearPulse® digital sonar
- Now available with WiFi

C SERIES

- 9 and 12.1in display sizes
- Built-in high-sensitivity GPS receiver
- Wi-Fi streaming to Apple iPhones (4 and above) and iPads (1 and 2)
- Network up to six displays
- Bluetooth integration
- Dual frequency fishfinder versions



E SERIES

- 7, 9" 12.1 and 15.4in touchscreen displays
- HybridTouch. Full touchscreen interaction or total keypad control - your choice
- Built-in high-sensitivity GPS receiver
- Wi-Fi streaming to Apple iPhones (4 and above) and iPads
- Network up to six displays
- Bluetooth integration
- Dual frequency fishfinder versions



Raymarine Autopilots



ST1000+ & ST2000+ SAILBOAT PILOTS

- ST1000+ for sailboats up to 2,500kg
- ST2000+ for sailboats up to 4,500kg
- Inbuilt SeaTalk and NMEA interface
- Autopilot and navigation info display
- Weatherproof design, 2-stage pushrod seal
- Low power consumption

EVOLUTION AUTOPILOTS

Race, cruise, or fish - Evolution will take command! No fuss, easy to install and robust, the Evolution autopilot combines Raymarine's autopilot expertise, FLIR Systems' R&D, and advanced aerospace guidance technology to create Evolution Ai control algorithms that deliver a new level of accurate autopilot control



NEW FOR 2014

KEY FEATURES

- EV Sensor Core - 9-axis sensor monitors vessel motion in all three dimensions
- Precision monitoring of heading, pitch, roll, and yaw allowing the autopilot to evolve instantly as sea conditions and vessel dynamics change
- The p70 and p70R control heads feature vibrant colour displays and are powered by Raymarine's intuitive LightHouse user interface
- A pilot for all vessels - wide range of cockpit, hydraulic and linear drives available for your boat. Also compatible with 3rd party drive systems

Raymarine Instrument Systems

I40 SERIES

- Compact displays with extra large digits
- Speed, Depth, Bidata, Digital Wind
- Same footprint as ST40 displays



I50 & I60 SERIES

- Dedicated digital (i50) and analogue (i60) displays
- i50 Speed, Depth and Tridata displays
- i60 Wind and Close Hauled displays
- SeaTalk, SeaTalk^{ng} and NMEA2000 interfaces



I70 SERIES

- Multifunction display with 4in LCD display and 160° viewing angle
- LightHouse user interface is simple and quick to use
- Display Wind, Speed, Depth, Engine, Environmental, Fuel and navigation data

Raymarine Echosounders & Fishfinders

DRAGONFLY SONAR

View the world beneath your boat with the photo-like clarity of CHIRP DownVision™ sonar, the first high-resolution CHIRP imaging sonar for anglers. Dragonfly's dual channel CHIRP technology lets you explore structure and target fish like never before.

KEY FEATURES

- View high resolution CHIRP DownVision structure and target fish with CHIRP sonar simultaneously
- Inbuilt 50-channel GPS with fast-acquisition technology
- Available with Navionics charts included on microSD
- User interface simplifies display choices and menu options
- Ultra-bright 1500 nit optically bonded sunlight display
- Tilt/swivel quick release holster with optional locking core



NEW FOR 2014

Raymarine VHF Communications

RAY49E

- Entry level Class D DSC VHF
- NMEA0183 input
- Programmable scanning, dual & tri watch
- External loudspeaker option
- Available in gray or white



RAY55E

- Position, COG & SOG display via NMEA
- Chartplotter position polling
- Dual station with full duplex intercom
- Ray218E adds an inbuilt 30W hailer with "Listen Back" capability and automatic foghorn



RAY240E

- Modular multi-station system with "black box" transceiver unit
- Full function handset stations with alphanumeric keypad
- Intercom facility between stations
- Optional fog horn/loudhailer
- Separate loudspeaker with on/off switch and volume control



Simrad Powerboat Systems

Simrad NSE Expert

8in & 12in Combi Displays

Simrad NSE is engineered for anyone who is serious about performance navigation. The NSE8 & NSE12 displays are feature-rich network displays with a lightning fast processor, high bright LED backlight display and intuitive control interface. Equipped with the optional BSM-1 broadband sounder module and BR24 Broadband Radar or HD digital Radar, the NSE range offers best in class performance.



KEY FEATURES

- Single, Dual or multi-station configurations
- Network NMEA0183, NMEA2000 or Simnet data
- Input and output of video or navigation data
- Pre-loaded with complete Navionics Platinum charts for Europe

SEEN IT
FOR LESS?
WE WON'T BE
BEATEN ON
PRICE!

Simrad NSS Evo2

7, 9, 12 & 16in Touchscreen Displays

The integrated NSS evo2 MFD features a sleek display with TouchSensible™ multi-touch interaction. TouchSensible, provides precision interaction in any sea condition with its logical keypad input and rotary, push-to-enter knob. With its widescreen 16:9 display and expandability the NSS evo2 is well suited for center consoles, sportfishing and power cruising boats. Combo versions also available with integrated StructureScan™ and Broadband sonar.



KEY FEATURES

- Embedded, hi-gain 10Hz GPS/GLONASS antenna
- Simrad performance module integration
- Full autopilot integration capability
- Mapping Options: Navionics, C-Map MAX-N, Insight, Insight Genesis, NV Digital and charts produced with Navico Mapcreator

NEW
FOR 2014

Simrad NSO Evo2

Black Box Navigation System

Perfectly suited to blue water powerboats and commercial vessels, NSO evo2 features high-power processing, dual video output for individual display and control of touch and non-touch monitors, sonar, radar, charting and entertainment systems integration.



KEY FEATURES

- Dual independent video output
- New range of 16, 19 and 24"
- multi-touch touchscreen monitors
- New 16, 19 and 24" widescreen monitors
- Performance Module Integration with Broadband Radar, WiFi-1, BSM-2 echo sounder and more
- Compatible WITH C-Map MAX-N, Navionics Gold and Platinum, Insight, Lake Insight, Nautic Insight, Insight Genesis, NV digital charts and others
- Quad-core processor for lightning fast performance
- Smaller and lighter design for ease of installation
- Optimisation for widescreen monitors
- Dedicated power cruising navigational panel
- Easy-to-use icons
- Easy-access widgets for activating integration of components such as SonicHub and Autopilots

NEW
FOR 2014

Simrad HD RADARS

High Definition Digital Radar



- DX42S 2kW 18in Radome, 24nm, 5.3° beamwidth
- DX64S 4kW 24in Radome, 48nm, 4° beamwidth
- TX06S 6kW 4ft Open Array, 64nm, 1.8° beamwidth
- TX10S 10kW 6ft Open Array, 72nm, 1.2° beamwidth
- TX25S 25kW 8ft Open Array, 96nm, 1° beamwidth

Simrad Broadband Radar 3G/4G

Networked Radar

KEY FEATURES

- Crystal clear image
- Automatic clarity
- 10 MARPA tracking
- Dual guard zones
- Instant on
- Low power consumption, extremely low emissions
- 4G ONLY: 50% greater range than 3G
- 4G ONLY: Dual range
- 4G ONLY: 48 RPM option
- 4G ONLY: Advanced target detection



Simrad NAIS-400

AIS Class B Black Box Transceiver

See and be seen on the water. Automatically and dynamically share and update your position to reduce the risk of on water collision.

KEY FEATURES

- Dual Channel
- Low Power use
- Compact
- NMEA 2000
- NMEA0183 including multiplexing USB PC interface



Simrad IS20

Instrument System



KEY FEATURES

- Flexible display units for vital data
- Graphic and Combi digital displays
- Wind, Tack, Compass & Rudder analogue displays
- Easy to use with large control buttons
- High contrast dot matrix displays
- SimNet or NMEA0183 connectivity
- Compatible with NSO, NSE and NSS

Simrad IS40

Instrument & Autopilot System



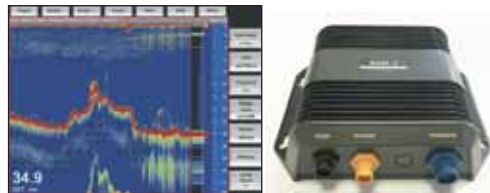
KEY FEATURES

- Bright, easy to use full colour displays
- Multiple data pages
- Speed, depth, wind, autopilot and engine data
- 40% larger display than its rivals
- Largest digits available, easy to read day or night
- Bonded LCD with 170° viewing angle
- Easy to install with daisychain connectivity
- Compatible with NSO, NSE, NSS and OP10

Simrad BSM-1

Broadband Sounder Module

Compatible with NSE, NSO & NSS systems.



KEY FEATURES

- Tri-frequency capability for optimal performance
- Deep water performance of over 3000ft (with appropriate transducer)
- Low Power and Low-noise Sonar
- High Resolution Linear receiver providing superior clarity in shallow and mid water

Simrad SonicHub

Marine Audio Server

Marine audio server which lets you control onboard music components from any NS display. A water-proof dock connects an iPod, iPhone or MP3 player while also keeping it protected and secure.



KEY FEATURES

- Four channel x 50 watt speaker amplifier
- AM/FM stereo tuner
- Line-out to subwoofer
- Audio source input via USB port and flash drive
- Aux input for audio, intercom, alarm and override
- Music control for up to three individual zones



PRICES CHANGE DAILY
VISIT OUR WEBSITES FOR THE LATEST DEALS

www.mesltd.co.uk

Call +44 (0)1179 114 111



B&G Sailboat Systems

B&G Zeus²

7in, 9in & 12in Touchscreen Multifunction Displays

The new Zeus² chartplotter is packed full of B&G's unique sailing specific features. Additional benefits include an easy to use, highly intuitive and responsive user interface, multi-touch widescreen with pinch to zoom technology - all backed up by B&G's signature rotary controller. From the ultra-fast processor, which offers seamless chart redraw and super sharp graphics, to the bonded glass, bright LED backlit screen, every inch of the Zeus² has been engineered to provide style and performance in the toughest of environments. Zeus² integrates seamlessly with your network including Broadband Radar, AIS, CZone Digital Switching and much more. Perfect for the sailor who likes to spend more time on the water than at the chart table, the Zeus² has an array of options to help improve on water navigation and maximise sailing success.

SailSteer: A composite sailing screen, which combines key sailing data into one clear display. The SailSteer navigation screen shows Heading and COG, Current Layline, Calculated Tide, True Wind Angle indicator, Rudder Angle Indicator and Opposite Tack Layline to name but a few features. All data is shown relative to the boat—so it's quick and easy to relate to reality.

GoFree: Control and view your Zeus² via your tablet—wherever you are. View data on a Smartphone and carry a chartplotter in your pocket. Requires GoFree WiFi-1 Wireless Gateway Module.

Maximum Mapping: Zeus² is compatible with leading cartography options, including Navionics, Insight and C-Map, which can be installed via a convenient dual chart slot to give sailors the level of detail they need for confident, expert navigation on the water. Dual media card slots let you to run multiple datasets.

KEY FEATURES

- Responsive multi-touch display - pinch to zoom, tap to select, swipe to pan
- SailTime calculations - no more reliance on ETAs and distances that are only useful for powerboats
- Enhanced Laylines - see your tacking angles on a chart, even without an active waypoint
- Enhanced Tides - internal tidal calculations and Navionics® Dynamic Tides and Currents data (requires Navionics cartography)
- Internal high-sensitivity GPS antenna
- Low power consumption
- Video input/output
- Integrated Pilot control
- NMEA 2000, 0183 and Ethernet compatibility



HOT PRODUCT

NEW FOR 2014

B&G GoFree WiFi-1

Wireless Module

The WiFi-1 is a marine grade wireless gateway which allows owners of compatible B&G Zeus and Zeus² Touch Displays to view data on a wireless device such as an iPhone, iPad or Android device. Multiple tablets or smartphones can be used to view B&G network data. The GoFree Controller app allows Zeus Touch displays to be controlled from the wireless device, including SonicHub control.

The WiFi-1 connects to B&G Zeus Touch via Ethernet and supports wireless connectivity using 802.11 b+g wireless protocols. A number of B&G Zeus Touch units can be used with just one WiFi-1 module, meaning that an entire system can be online with just the addition of one handy wireless gateway.



HOT PRODUCT

KEY FEATURES

- Wireless technology
- Full Integration
- Network ready
- Marine Specific
- Zeus Touch compatible
- Rugged and waterproof
- Low Power device
- Easy to install
- Anti-VHF disruption filters

B&G Broadband Radar 3G/4G

Networked Radar

Award-winning Broadband Radar will keep constant watch over you and your crew. Whether you're interested in short range targets or longer range information, the Broadband 3G Radar and Broadband 4G Radar will provide the high levels of safety and target detection that you expect from B&G.

KEY FEATURES

- Low Power
- Feature Packed
- B&G Precision
- Low Emissions
- InstantOn
- High Target Separation
- No Main Bang
- **4G ONLY:** 36nm range
- **4G ONLY:** Dual range
- **4G ONLY:** 48 RPM option
- **4G ONLY:** Advanced target detection



B&G NAIS-400

AIS Class B Black Box Transceiver

See and be seen on the water with this advanced AIS Class B transponder. Automatically and dynamically share and update your position to reduce the risk of on water collision.

Also available is the NSPL-400, a compact low power antenna splitter, with very low signal loss and FM antenna output.

KEY FEATURES

- Class B transceiver
- Dual Channel
- Low Power use
- NMEA 2000 interface
- NMEA0183 including multiplexing USB PC interface
- Compact



B&G Sailboat Systems

B&G Triton Instrument System

The Triton instrument system brings the outstanding performance synonymous with B&G to the cruising yachtsman and club racer in an easy to use, great value, package.

Triton navigation systems consist of large and clear instrument displays, an intuitive autopilot controller and sensors packed full of race-winning pedigree, all of which can be easily installed and integrated with other electronics to create a bespoke system designed around you and your yacht.



KEY FEATURES

- Multifunction "do it all" display
- Straightforward user interface
- 4.1in colour display - nearly 40% more area than competing products
- Bonded screens - excellent visibility in all conditions
- Low power consumption typically 100mA - up to 30% less than its rivals
- Dedicated pilot control - or interface with Zeus MFD
- Expandable - choose a simple network and expand it to fit your requirements - with full B&G Zeus navigation system compatibility
- B&G Precision - Grand Prix derived sensor technology provides the most accurate information available
- Available as a Speed/Depth/Wind Cruise Pack with 3 displays and transducers
- Easy Installation - Micro-C connectors provide quick and easy daisy-chain connection, ideal for retro-fit or new build.

B&G Triton PILOT Inboard Autopilot System

A perfect complement to the Triton Instrument System, Triton Pilot uses the same 4.1in colour multifunction instrument head to display pilot status and course information in conjunction with the Triton Pilot Controller. Triton Pilot provides Intelligent Sail Steering, manual and auto steering functions, Smart Manoeuvre and chartplotter integration all combined with intuitive menus for ultimate control. Available in Low or High Current forms.

Integrate with sensors including rate-gyro corrected compasses and rudder feedback units to ensure optimum performance.



SEEN IT FOR LESS? WE WON'T BE BEATEN ON PRICE!

KEY FEATURES

- Intelligent sail steering - Steer to compass, true wind angle or apparent wind angle for optimum sailing performance
- Smart Manoeuvre - Tack at the touch of a button to make life easier when you're short handed
- Chartplotter integration - navigate to waypoint, or follow a route
- Easy to use



B&G H5000 Instrument System

The new H5000 instrument system combines unique sailing features with race-proven technology in a straightforward package. Developed for blue water cruisers and racing yachts alike, the range brings powerful system options to match your exacting requirements. From an ultra-fast CPU to a convenient web-browser interface access, full-colour and custom displays, the H5000 system was developed to provide the best instrument system available. The H5000 range comprises several units which network seamlessly with other onboard electronics including the Zeus range of chartplotters.

The H5000 system is driven by a powerful Central Processing Unit (CPU) reaching speeds up to 50 times greater than its predecessor, with Hydra, Hercules and Performance level software options tailored for all users from serious cruisers to professional racers. It works with B&G's proven H3000 Wind, Speed, Heel and meteorological sensors for a straightforward upgrades. The high resolution H5000 Graphic Display is highly intuitive and delivers information on a 5-inch bonded screen with fast, smooth display updates. The H5000 Race Display provides segmented text, numbers and target indicator for the race information you need in a glance.



KEY FEATURES

- Fast, Flexible CPU, 50 times faster than its predecessor
- Powerful 5" sunlight viewable colour display with straightforward user interface
- Glass bonded for zero condensation and enhanced contrast
- Unique sailing features, including B&G's unique boat motion corrections and dedicated start line functions
- Bright, 5-inch bonded LCD race display with update rates up to 10Hz. A unique bar graph provides an immediate visual reference
- Convenient web-style interface enables advanced calibration, set-up and diagnostics without the hassle of negotiating a complex menu system
- Access interface via PC, tablet or smartphone
- 10/10, 20/20, 30/30 and 40/40 mast maxi displays

NEW FOR 2014



B&G H5000 Pilot Inboard Autopilot System

The powerful H5000 Pilot brings the functionality and dedicated sailing algorithms of its record-breaking predecessor, supporting the exact needs of a performance sailboat and its crew, whether short-handed cruising or solo racing. In addition, the Pilot Controller provides dedicated access to autopilot functions.

Developed in the Grand Prix sailing arena, it is fresh from guiding the Vendee Globe winner to victory and dependable in the most challenging conditions - scrutinised and endorsed by the world's best. The H5000 Pilot Computer networks seamlessly with your H5000 system.



KEY FEATURES

- Dedicated Pilot control
- Glass-bonded monochrome display
- Straightforward interface
- Selectable steering modes - steer to Heading, Wind or Waypoint
- Apparent, True or Polar wind modes for optimum performance under sail
- Intuitive and responsive - provides gust and high-wind response modes for rapid response to changing conditions.
- Optimum course keeping - auto response switching and recovery mode for optimum course keeping in varying sea-states

NEW FOR 2014



PRICES CHANGE DAILY
VISIT OUR WEBSITES FOR THE LATEST DEALS

www.mesltd.co.uk
Call +44 (0)1179 114 111



Lowrance Multifunction Displays

Lowrance HDS TOUCH

7, 9 and 12in HD Touchscreen Multifunction Displays

**HOT
PRODUCT**



Delivering the same award-winning benefits that made the HDS High Definition System the world's top-selling multifunction display series, Gen2 Touch models incorporate easier-to-use, wide touchscreens in 7-, 9- and 12-inch sizes.

These units also feature the best, built-in fishfinding technologies on the market - the Broadband Sounder™ and StructureScan® HD as well as powerful chartplotting capabilities and seamless integration of Lowrance's comprehensive range of performance modules including the award-winning Broadband Radar™ and SonicHub® marine audio server.

KEY FEATURES

- Easy-to-use touchscreen control with high-bright, sunlight-viewable displays
- Customise and configure personal screen views with up to four panels at once
- SideScan and true DownScan Imaging™ offer full panoramic displays for best-in-class, clear picture-like views of underwater structure
- Available with a 50/200 kHz Skimmer® transducer for deep-water coastal applications or a 83/200 kHz Skimmer option for inland fishing
- Compatible with Airmar® in-hull or thru-hull transducers up to 1kW operation.
- Highly accurate internal 1 Hz GPS antenna with optional external 5 Hz GPS
- Pre-loaded with Navionics Silver cartography.
- Compatible with Navionics® Platinum+, Lowrance Insight HD charts, HotMaps Premium, HotMaps Platinum with Freshest Data and Fishing Hot Spots® Pro
- Simultaneously view Lowrance and Navionics mapping data.
- NMEA 2000®, NMEA 0183 and Ethernet compatible
- Video input for underwater or onboard cameras.
- Multi station networking
- Optional wireless connectivity with boat systems, iPhone, iPad and Android

Lowrance HDS GEN2

5-10in HD Multifunction Displays

**EDITOR'S
CHOICE**



HDS Gen2 multifunction displays offer High Definition charting and fishfinding with improved processor speed and StructureMap overlay feature (requires StructureScan) which allows you to view and create lifelike underwater images of the lake, river or seafloor. The versatile and flexible HDS operating system presents a whole new way to view and select features. This menu format is easy to grasp, so you can fly through keypad functions control with the greatest of ease and speed. The inbuilt high-sensitivity 16-channel GPS+WAAS antenna makes installation easy with no external antenna to fit. The 8 and 10in models feature a unique FlyWheel™ scroll dial and quick access softkeys as well as a larger memory capacity and four-way split screen functionality (two-way on the 5 & 7in models).

KEY FEATURES

- Range of chartplotter or chartplotter/fishfinders with 5, 7, 8 or 10in displays
- Available with embedded Navionics Silver UK & Ireland chart
- Real time side scan image overlay onto chart (StructureScan required)
- Lighting fast graphics redraw
- SolarMAX Plus display for the best detail in bright sunlight, the best wide-angle viewing ever achieved
- Multi station networking
- Compatible with Navionics Gold, Platinum and Platinum plus cartography
- Add Radar, StructureScan, AIS, Instruments, SonicHub and other NMEA 2000 devices

Lowrance Broadband Radar Networked Radar System For HDS



The revolutionary Broadband Radar offers amazing target resolution, even at 1/32nm range. Docks, channel markers, moored vessels and other targets are displayed with clarity and separation. Broadband technology also eliminates the "main bang" of a pulse radar (the dead zone immediately around the vessel) which interferes with close target detection. Because Broadband Radar transmits at 1/2000th the power of typical pulse radars (10 times less than an average mobile phone), the radome can be mounted in locations never before possible. No more waiting ages for a magnetron to warm up - 100% solid-state design provides InstantOn™ capability!

KEY FEATURES

- 19in radome, 5.2° beamwidth
- Crystal clear image of your immediate surroundings
- First radar with no radiation hazard
- InstantOn™ with no tuning required
- Low power consumption, ideal for yachts

Lowrance LSS-2 Structure Scan HD

Designed for all HDS displays, Structure Scan HD gives you the full picture, with phenomenal panoramic underwater sonar imaging, both sidescan and standard down scan. Plug and Play, it's easy to install - the improved LSS-2 imaging transducer is a low-profile, low-drag unit designed for multiple mounting locations - transom, transom step, jackplate, even trolling motors (with a simple, inexpensive adapter option).



KEY FEATURES

- Fully Networkable
- Down Scan high detail sonar imaging up to 90m
- Side Scan imaging to at least 45m
- View DownScan imaging with HDS Broadband Radar in split screen mode
- Transducer includes water temperature sensor

SUPPLIED WITH

LSS-2 module, LSS-2 imaging transducer

Lowrance SonicHub Marine Audio Server



Control your onboard music from any HDS display on the boat! A waterproof dock connects an iPod, iPhone or MP3 player while keeping it protected and secure. Input lines allow control of an iPod, iPhone, integrated AM/FM tuner, and plays MP3s on a USB stick.

KEY FEATURES

- Simple, menu-driven controls on the HDS
- Four channel x 50 watt speaker amplifier
- AM/FM stereo tuner
- Line-out to subwoofer
- Stereo AUX line input for audio, mono line input for intercom, alarm and emergency override
- Music control for up to two individual zones

SUPPLIED WITH

SonicHub server, waterproof dock, 2 x 6.5in 200W 2-way speakers, NMEA2000 network T-connector plus 1.8m cable, mounting kit

Lowrance Chartplotters & VHF Radios

Lowrance ELITE-4 SERIES

4in Colour Fishfinder, Chartplotter and Chart Sounder

All-new chartplotter, echosounder and chartplotter/echosounder combi with a high resolution 4.3 inch display. Chartplotters include a built-in GPS antenna, world basemap and support for high-definition mapping. Echosounder models feature Hybrid Dual Imaging™ that combines Broadband Sounder™ with DownScan Imaging™ technology.

KEY FEATURES

- Compatible with Navionics Gold and C-Map Max-N
- Insight Genesis™ - create customised maps based on your own survey data
- DownScan Overlay™ technology overlays DownScan Imaging onto Broadband Sounder
- One-thumb operation

MODELS AVAILABLE

- **Elite 4m HD** - 4in chartplotter
- **Elite 4 HDI** - 4in chartplotter/echosounder, 50/200 455/800kHz or 83/200 455/800kHz transducer
- **Elite 4x HDI** - 4in echosounder, 50/200 455/800kHz or 83/200 455/800kHz transducer



NEW FOR 2014

Lowrance Elite-5 Series

5in Colour Fishfinder, Chartplotter and Chart Sounder

All-new chartplotter, echosounder and chartplotter/echosounder combi with a high resolution 5 inch display. Chartplotter models include a built-in GPS antenna and support for high-definition mapping. Echosounder models feature Hybrid Dual Imaging™ that combines Broadband Sounder™ with DownScan Imaging™ technology to provide the best possible view beneath your boat.

KEY FEATURES

- Hybrid Dual Imaging™ (HDI)
- Highly accurate, built-in GPS antenna with world basemap
- Compatible with Navionics® Gold and Platinum+ and C-Map Max-N
- Insight Genesis™ - create customised maps based on your own survey data
- DownScan Overlay™ technology overlays DownScan Imaging onto Broadband Sounder
- Advanced Signal Processing (ASP) reduces the need to manually adjust settings to see fish, structure and bottom detail more clearly
- Page selector menu - access all features using one-thumb operation



NEW FOR 2014

MODELS AVAILABLE

- **Elite 5m HD** - 5in chartplotter
- **Elite 5 HDI** - 5in chartplotter/echosounder, 50/200 455/800kHz or 83/200 455/800kHz transducer
- **Elite 5x HDI** - 5in echosounder, 50/200 455/800kHz or 83/200 455/800kHz transducer

Lowrance Elite-7 Series

7in Colour Fishfinder, Chartplotter and Chart Sounder

Elite-7 delivers superior navigational performance with a highly accurate built-in GPS antenna (chartplotter models only). The 7-inch display with LED backlight provides an easy-to-view screen – all at a more affordable price. Available as a standalone chartplotter, echosounder with Hybrid Dual Imaging™ (HDI) or a combination chartplotter echosounder with HDI.

KEY FEATURES

- Highly accurate, inbuilt GPS
- Background mapping
- 70% larger Elite colour display - brilliant, widescreen visibility and viewing detail in all conditions
- Multi-Window Displays
- NMEA 2000 networking
- One-thumb operation

MODELS AVAILABLE

- **Elite 7m** - 7in chartplotter
- **Elite 7 HDI** - 7in chartplotter/echosounder, 50/200 455/800kHz or 83/200 455/800kHz transducer
- **Elite 7x HDI** - 7in echosounder, 50/200 455/800kHz or 83/200 455/800kHz transducer



Lowrance Link-5

Fixed DSC VHF Radio

Compact and affordable radio with an ultra-rugged waterproof (IPX7) chassis. Meeting the latest international compliance standards, the Link-5 offers ultimate reliability and performance, for unparalleled safety and communication on the water.

SEEN IT FOR LESS? WE WON'T BE BEATEN ON PRICE!



KEY FEATURES

- 1/25W transmit power
- Class D compliant with dedicated DSC transceiver
- High quality easy grip rubber fist microphone with speaker
- Quick "favourites" channel access
- Extra large channel 16/9 key and rotary knob
- Dedicated volume and Squelch knob

Lowrance Link-8

Fixed DSC VHF Radio With Dual Channel AIS Receiver

The Link-8 marine VHF radio combines reliable performance with critical safety features for complete communication anywhere on the water. Features a built-in dual channel AIS receiver with AIS plot functionality and NMEA2000/0183 connectivity.



KEY FEATURES

- Extra large, high resolution LCD display
- High quality fist mic with built-in speaker
- MOB feature
- Track Your Buddy option
- PA/Hailer horn output with Listen Back Feature
- 20 user programmable names with MMSI
- Fully waterproof

HOT PRODUCT

Lowrance Link-2

Handheld VHF Radio

With a built-in GPS receiver, the Lowrance Link-2 is a full-featured 1/5W handheld VHF marine radio with the added convenience of a simple plotter with Great Circle waypoint navigation, Man Over Board functionality and storage for up to 500 waypoints. It's waterproof and it floats too!

KEY FEATURES

- Unique trackplotter screen feature
- "Track-Your-Buddy" - pinpoint and display the location of other vessels via position polling
- "Get Buddy" transmits position at the push of a button
- Save a buddy list of up to 20 people
- Large display with adjustable contrast and backlighting
- 1400mAh Li-Ion battery
- Signal Strength Indicator
- Lat/Long and time display
- Distress call button
- Up to 13hrs battery life

SUPPLIED WITH

Rubber duck antenna, desktop charger and mains adapter, wrist strap, belt clip



PRICES CHANGE DAILY
VISIT OUR WEBSITES FOR THE LATEST DEALS

www.mesltd.co.uk

Call +44 (0)1179 114 111



Humminbird Fishfinders and Chartsonars

Humminbird PiranhaMAX 175x

4in Mono Fishfinder

The PiranhaMAX 175 features a 16 level grayscale 240V X 160H, 4in display with 1600 watts PTP power output with Dual Frequency sonar. The design also allows drop-in replacement for competitive in-dash models.

EXPERT
ADVICE

KEY FEATURES

- 4.0in 240V x 160H FSTN LCD display
- 200/455kHz Dual Frequency sonar
- Depth: 600 ft
- Power Output 200 Watts (RMS), 1600 Watts (Peak-to-Peak)
- Portable version also available



Humminbird PiranhaMAX 196cxi

3.5in Colour Internal GPS Fishfinder Combo

The PiranhaMAX 196ci features a 256 colour 320V X 240H, 3.5in display, 1600 watts PTP power output with Dual Frequency sonar. Now you can mark waypoints, see your track, view Course over Ground and get your GPS speed. The design also allows drop-in replacement for competitive in-dash models.

KEY FEATURES

- 3.5in 320V x 240H 256 colour display
- 200/455kHz Dual Beam sonar
- Depth: 600 ft.
- Power Output 200 Watts (RMS), 1600 Watts (Peak-to-Peak)
- Precision GPS
- Trackplotting
- GPS Speed
- 500 waypoints, 2,000 points



Humminbird PiranhaMAX 195cx

3.5in Colour Dual Beam Fishfinder

The PiranhaMAX™ 195cx features a 256 colour TFT 320V x 240H 3.5" display and dual beam sonar with 1600 watts PTP power output. The new design also allows drop-in replacement for competitive in-dash models.

SEEN IT
FOR LESS?
WE WON'T BE
BEATEN ON
PRICE!

KEY FEATURES

- 3.5in diagonal 256 Colour Display
- 320V x 240H pixels
- Dual Beam Sonar
- Sonar Frequency 200/455 KHz
- Coverage: 28° & 16° @ -10db
- Power Output (max.): 200W (RMS); 1600W (PTP)
- Depth Capability: 183 m



Humminbird 140cx Fishin' Buddy

3.5in Dual Beam + Sidesfinder

The 140c Fishin' Buddy features a 320V x 240H 3.5in backlit 256 colour TFT display, Down and Side looking sonar with 1000 Watts PTP power output. The ultimate in portability, with an ergonomic clamp mount designed to use nearly anywhere. No rigging, wiring or transducer to mount.

KEY FEATURES

- Depth: 240ft Down, 120ft Side
- 24-40in telescopic pole
- 3.5in 320V x 240H 256 colour TFT LCD
- Target Separation: 2.5in
- Power Output: 125 Watts (RMS), 1000 watts (Peak to Peak)
- Power: 6 AA batteries
- Power consumption: 125mA (lights off)



Humminbird 346cx DI

3.5in Down Imaging Fishfinder

The 346c DI features a brilliant color 320V x 240H 3.5in display with LED backlight and Down Imaging Enhance and advanced DualBeam PLUS sonar with 4000 Watts PTP power output. New for 2013 is the ability to turn 2D sonar off while in full screen DI view and get twice the number of DI pings.

KEY FEATURES

- Switchfire Sonar
- Sonar Recording
- Split Screen Views
- Wide Narrow Cone Split Screen
- Instant Image Update
- Freeze Frame with the ability to mark structure on sonar
- Selective Fish ID+
- Real Time Sonar RTS Window
- Sonar Echo Enhancement
- TrueArch Technology
- 3D Chart View
- Large Digits View
- Custom View Selections
- Custom Digital Readout Selection
- Temperature Alarm
- Triplog



Humminbird 386 DI

3.5in Combination Chartplotter and Down Imaging Sonar

The 386ci DI Combo features a brilliant color 320V x 240H 3.5in display with LED backlight, Down Imaging Enhance and advanced DualBeam sonar with 4000 Watts PTP power output, and GPS Chartplotting with built-in UniMap. Optional Navionics Gold cartography.

KEY FEATURES

- 3.5in 320x240 256 colour TFT
- 2500 Waypoints, 50 routes, 50 tracks with 20,000 points each
- Down Imaging Sonar with DualBeam PLUS™ & SwitchFire™
- Depth: 350ft (DI) / 600 ft.
- DI Only Mode and Digital Depth Source
- Selection - 2D or DI
- Power Output 500 Watts (RMS), 4000 Watts (Peak-to-Peak)
- Precision GPS
- Trackplotting
- Chartplotting
- GPS Speed
- Humminbird UniMap™



Humminbird Chartsonars and Chartplotters

Humminbird 688cxi HD DI

5in Combo Chartplotter and Dual Beam Sonar

Featuring a High Definition 480H x 640V 5in 256 colour display, DualBeam PLUS sonar and Down Imaging sonar with 4000 Watts PTP power output and GPS Chartplotting.

KEY FEATURES

- Down Imaging Sonar
- Switchfire Sonar
- Screen Snap Shot to Memory Card
- Sonar Recording
- Split Screen Zoom
- Split Screen Bottom Lock
- Wide Narrow Cone Split Screen
- Instant Image Update
- Freeze Frame with the ability to Mark Structure on Sonar
- Selective Fish ID+
- Real Time Sonar RTS Window
- Sonar Echo Enhancement
- TrueArch Technology



NEW FOR 2014

Humminbird 698cxi HD SI

5in Combination Chartplotter and Side Imaging Sonar

Featuring a brilliant 480H x 640V, 5in 256 colour display, Side Imaging and Down Imaging sonar with 4000 watts PTP power output, Precision Internal GPS Chartplotting.

KEY FEATURES

- 3D Chart View
- Large Digits View
- Custom View Selections
- Custom Digital Readout Selection
- Selectable Display Colors
- Selectable Background Colors
- View Preset Keys
- Temperature Graph
- Temperature Alarm
- Triplog
- X-Press™ Menu System
- Built-in UniMap cartography



NEW FOR 2014

Humminbird 899cxi HD SI

7in Chartplotter and Side / Down Imaging Sonar

Featuring a super bright 7in 480V x 800H LCD display providing bright, crystal clear images for easy viewing in harsh sunlight. The Side Imaging / Down Imaging sonar with DualBeam PLUS™ and SwitchFire™ has 8000 watts PTP power output, 10Hz precision GPS Chartplotting with built-in Humminbird ContourXD™ map and networking capabilities.



NEW FOR 2014

KEY FEATURES

- DualBeam PLUS™ 200/83kHz with SwitchFire™
- HD Side Imaging and Down Imaging 455/800kHz, 180° total coverage
- Optional 200/50kHz transducer
- 8000 Watts (PTP), 1000 Watts (RMS)
- 150ft/45m (SI), 1500ft/450m

Humminbird 959cxi HD DI

8in Widescreen Chartplotter and Down Imaging Sonar

Featuring a super bright 8in 480V x 800H LCD display providing bright, crystal clear images for easy viewing in harsh sunlight. The HD Down Imaging™ sonar with DualBeam PLUS™ with SwitchFire™ has 4000 watts PTP power output, 10Hz precision GPS Chartplotting with built-in Humminbird ContourXD™ map and Advanced Fishing System capabilities.



NEW FOR 2014

KEY FEATURES

- 8in 800x480 LCD display
- DualBeam PLUS™ with SwitchFire™ 200/455kHz
- HD Down Imaging 180° total coverage
- 4000 Watts (PTP), 500 Watts (RMS)
- 250ft/75m (DI), 600ft/180m

Humminbird 1199cxi HD SI

10.4in Widescreen Chartplotter and Side Imaging Sonar

Featuring a huge 10.4in display, Side Imaging and DualBeam PLUS sonar, 10Hz precision GPS Chartplotting with built-in ContourXD maps, and advanced Fishing System capabilities.



NEW FOR 2014

KEY FEATURES

- DualBeam PLUS™ 200/83kHz
- HD Side Imaging and Down Imaging 455/800kHz, 180° total coverage
- Up to 8000 Watts* (PTP), 1000 Watts (RMS)
- Max Depth 450m/1500ft (900m/3000ft with optional 50kHz transducer)
- Max Depth (Side Imaging) 150ft/45m

* Requires the use of the optional 1KW (8000watt) transducer.

Humminbird ONIX

8.4in & 10.4 Touchscreen Chartplotter/Sonar Combos

A range of 8 and 10in multi touch combination Chartplotter and Sonar displays with DSP (Digital Signal Processing) DualBeam PLUS sonar with SwitchFire with up to 8000 Watts PTP power output. GPS Chartplotting with Humminbird TriFuel™ Cartography that gives you access to world background maps from Navionics, C-MAP and Humminbird LakeMaster.



NEW FOR 2014

HOT PRODUCT

KEY FEATURES

- ONIX8ci - 8.4in chartplotter & DualBeam PLUS sonar
- ONIX8ci SI - 8.4in chartplotter & DualBeam PLUS sonar with Side Imaging
- ONIX10ci - 10.4in chartplotter & DualBeam PLUS sonar
- ONIX10ci SI - 10.4in chartplotter & DualBeam PLUS sonar with Side Imaging
- DualBeam PLUS™ 200/83kHz max depth 450m/1500ft
- Max depth 1500m with optional 200/50 kHz transducer for deepwater use or 3000m with Optional CHIRP Ethernet Sonar



PRICES CHANGE DAILY
VISIT OUR WEBSITES FOR THE LATEST DEALS

www.mesltd.co.uk

Call +44 (0)1179 114 111



McMurdo EPIRBs, PLBs and AIS Beacons

McMurdo Fast Find 220

406MHz GPS PLB

The Fast Find 220 uses advanced technology packed into a simple, lightweight palm sized unit, now with 6 year battery life. Using the dedicated 406MHz frequency, the 220 transmits your unique ID and precise GPS position to the global network of search and rescue satellites. Within minutes rescuers are alerted to your situation, and receive regular position updates. Finally, emergency services can home in on your beacon's 121.5MHz transmission to find you.

KEY FEATURES

- Compact and lightweight
- 6 year battery life
- Floats with buoyancy pouch (included)
- 406MHz transmitter and 121.5MHz homing frequency
- Integral GPS
- Waterproof to 10m
- No subscription fees or call charges
- SOS Morse LED flash light
- Safe-stow antenna
- Simple design, easy to use
- Minimum 24hrs continuous operation



McMurdo Smartfind G5

406MHz GPS EPIRB

Ultra-compact 406MHz EPIRB with a high performance multi-channel integral GPS. Supplied with a Carrysafe mounting bracket, the G5 can be activated manually or automatically by immersion in water. A hydrostatic release casing is also available.

Smartfind EPIRBs are programmed with a unique serial number which must be registered with the national authorities. Where permitted by these authorities, beacons can be re-programmed with the vessel's MMSI or Radio Call Sign.

KEY FEATURES

- Transmits on 406MHz (distress) and 121.5MHz (homing frequency)
- State of the art multi-channel GPS
- Internationally approved
- Non hazardous battery for safe and easy transportation
- High brightness LED flashing locator light
- Comprehensive diagnostic and self-test facilities
- 5 year battery life
- 5 year warranty
- Minimum 48hrs continuous operation



EDITOR'S CHOICE

McMurdo Smart Find S10

Personal AIS Beacon

The Smartfind S10 AIS Beacon is an innovative manually activated personal safety device which incorporates both AIS (Automatic Identification System) and GPS technology.

Smartfind S10 is waterproof, buoyant and compact, intended for carriage by divers, crew and anyone who works or carries out leisure activities on the water.

When activated the Smartfind S10 transmits an AIS signal to the vessel the individual has come from and to all AIS enabled equipment within a typical 4 mile range, signalling that help is required in a man overboard or lost diver situation.

KEY FEATURES

- Manually activated personal safety device to aid recovery of persons in difficulty
- Transmits GPS position information over AIS every minute
- Typical range 4nm
- Small and light for unobtrusive carriage
- Waterproof, buoyant and fully submersible to 60m
- Flashing LED light
- Minimum 24 hour continuous operation
- 5 year battery life



McMurdo Smartfind S20

Survivor Recovery System

The Smartfind S20 SRS (Survivor Recovery System), is a personal AIS device designed to be fitted to a lifejacket and assist in Man Overboard recovery. It enables AIS equipped vessels to quickly and efficiently locate and retrieve a missing crew member. It also features a flashing LED indicator light to aid detection.

Carrying a Smartfind S20 is a must for every safety conscious sailor. Using this simple to operate, yet state of the art device gives the best chance of retrieval in a man overboard situation.

KEY FEATURES

- Lifejacket mounted personal AIS beacon
- Transmits GPS position information over AIS every minute
- Compact and lightweight
- Webbing clip or oral inflation tube mounting
- Provides exact location, distance and bearing to locate a person in need of assistance
- Minimum 24 hour continuous operation
- 7 year battery storage life

HOT PRODUCT



Vesper, Spot, Avtex AIS, GPS Tracking, TV Combis

Vesper WatchMate Vision

Touchscreen Class B AIS Transponder with WiFi

WatchMate Vision is a clever, dedicated safety instrument for any leisure or work boat skipper wanting to make accurate safety decisions using integrated AIS GPS and NMEA 2000 information.

Vision brings a new dimension to AIS information by the intuitive way it eliminates unwanted alarms and removes clutter from the display. It prioritises only the targets that have a current collision risk while allowing you to customise the powerful features to your current situation (Offshore, Coastal, Harbour or Anchored).



KEY FEATURES

- NMEA 2000 / 0183, WiFi and waterproof USB connectivity
- WiFi configuration options; Access Point for up to five devices or connected to an existing router
- Worldwide coastal outlines on color touchscreen
- Screen readable with polarized lenses
- Prioritised target list and split screen views
- Transponder Silent Mode option for privacy
- Free WatchMate app for iPhone/iPad providing interactive remote controls
- Internal high-performance parallel two channel Class B AIS transponder
- 50 channel GPS receiver with internal antenna
- New multi-processor architecture for fast performance

HOT PRODUCT

Vesper AISWatchMate 850

Class B AIS Transponder

The AISWatchMate 850 Transponder incorporates a built-in GPS receiver and patch antenna with the award winning AISWatchMate collision avoidance display. The AISWatchMate 850 transmits your AIS data and displays data from all AIS equipped vessels in your vicinity. Audible warning alarms are sounded if a potentially dangerous situation exists. The alarm sounds whenever a ship is detected that will come dangerously close even though the ship may still be many miles away. You are alerted immediately with the closest point of approach (CPA) and the time until CPA.

KEY FEATURES

- Ultra low power consumption
- Integrated GPS antenna
- Large 5in sunlight viewable display
- Easy to use
- Direct Selective Calling (DSC)
- AIS SART and MOB
- Target plot display
- CPA and TCPA, Bearing and Range
- CPA, Guard and Anchor watch alarms
- External alarm output
- Silent Mode
- Graphical plot shows crossing situations
- Meteorological and hydrographic display
- Fully waterproof including USB connection
- External interface



SEEN IT FOR LESS? WE WON'T BE BEATEN ON PRICE!

Vesper XB-8000

Black Box Class B AIS Transponder

A unique Class B AIS transponder with GPS and WiFi allowing AIS and GPS information to be viewed from anywhere on your boat. Mounting the XB-8000 is easy with innovative cable connection points that create low profile installations.

KEY FEATURES

- High-performance two channel AIS transponder
- View AIS and navigate from your PC or tablet from anywhere on your boat over wireless connections
- Connect to WiFi simultaneously
- Free WatchMate app for iPhone/iPad providing interactive remote control
- NMEA 2000 / 0183, WiFi connectivity
- Waterproof USB connectivity
- Transponder Silent Mode
- Includes 50 channel GPS receiver with WAAS/EGNOS
- Multi-colour operational status LED



SPOT2

Personal Tracker/Satellite Distress System

SPOT2 gives you peace of mind knowing help is always within reach. SPOT uses the GPS satellite network to acquire its coordinates, and then sending its location with a link to Google Maps and a pre-programmed message via a commercial satellite network.

Unlike Personal Locator Beacons, SPOT does more than just call for help. Track your progress, check in with loved ones and non-emergency assistance are also available at the push of a button. And because it uses 100% satellite technology, SPOT works where cell phones won't.



KEY FEATURES

- **SOS:** Alerts the appropriate emergency services worldwide in life threatening or other critical emergencies
- **Help:** Notifies your personal contacts in non-life threatening emergencies.
- **Check-in/OK:** Lets friends/family know that all is OK with a pre-programmed message along with your GPS location via SMS
- **Custom Message:** Send a custom message with GPS location

SPOT3

Generation 3 Personal Tracker/Satellite Distress System

The latest generation of award-winning SPOT devices, giving you a critical, life-saving line of communication using 100% satellite technology.

KEY FEATURES

- Improved Performance
- Motion activated - SPOT3 sends track updates when you are moving and stops when you do
- Unlimited tracking - no need to reset after 24hrs
- Extreme tracking - vary tracking rate down to every 2.5 minutes
- Longer battery life - approx twice as much as SPOT2!
- USB power input



SPOT CONNECT

Smartphone Satellite Communicator

No mobile signal? Turn your smartphone into a satellite communicator - simply pair your smartphone with SPOT Connect and get connected to a global satellite network that lets you send messages and GPS coordinates from virtually anywhere on the planet.

KEY FEATURES

- Send custom "Type & Send" 41 char text messages
- Store up to 10 predefined messages
- Provide GPS functionality to non-GPS devices
- Track Progress on Google Maps
- Transmit an SOS message in an emergency
- Send location-based SMS or emails via satellite
- Web and Mobile account management
- Bluetooth wireless connection
- On device SOS button
- Waterproof and lightweight



Avtex L186

18.5in Super Slim Widescreen LED TV

Features inbuilt DVB-T2 high definition tuner giving access to HD programmes and all through your regular aerial! The L186 benefits from all the outstanding features you expect from an Avtex TV, such as AQT one button tuning, pause and record live TV to a USB stick or HDD in high definition.

KEY FEATURES

- **L186DR** - LED TV/CD/DVD combi
- **L186DRS** - LED TV/CD/DVD combi with inbuilt HD satellite decoder
- DVBT & DVBT2 digital tuner
- HD built-in for terrestrial channels
- Pause/playback live TV
- Instant record to USB or HDD
- Timer record from EPG
- 240v AC / 12v24v DC
- 2xHDMI / 2xUSB / phono / headphone / audio in / co-axial audio-out
- Also available - **L216DR** & **L216DRS** with 21in widescreen display



PRICES CHANGE DAILY
VISIT OUR WEBSITES FOR THE LATEST DEALS

www.mesltd.co.uk

Call +44 (0)1179 114 111



Ocean Signal Safety Products

OCEAN SIGNAL RESCUEME PLB1

Personal Locator Beacon (PLB)

The new rescueME PLB1 is the world's smallest Personal Locator Beacon. Wherever at sea or on land, the rescueME PLB1 provides the reassurance that emergency services can be alerted by the press of a button.

Despite its ultra-compact size, rescueME PLB1 uses the same Cospas Sarsat search and rescue satellite network as the E100/G EPIRBs.

When activated, the rescueME PLB1 transmits your position and unique ID to a Rescue Coordination Centre via satellite link. Rescue services are promptly notified of your emergency and regularly advised of your current location. To assist with search and rescue, a homing signal is transmitted on 121.5MHz, which is received by equipment fitted to both sea and airborne rescue craft.

The rescueME PLB1 can be operated with one hand in even the most challenging situations. A spring loaded flap covers the activation button preventing inadvertent use. The integrated strobe light ensures maximum visibility with an incredible 1 candela output.

rescueME PLB 1 can be easily fitted to a lifejacket or belt taking up minimal space and ensuring it is easily accessible.

HOT PRODUCT

KEY FEATURES

- Waterproof to 15m
- Easily deployed antenna
- 30% (typically) smaller
- Fast accurate positioning
- No Subscription
- 7 year battery life
- 7 year warranty



Simple, one handed operation



Lifejacket or belt mounting

OCEAN SIGNAL SAFESEA V100

GMDSS Handheld VHF Radio

Ultra-rugged and easy to use handheld that meets all IMO requirements for carriage on SOLAS ships.

The novel battery protection tab means the primary battery can be permanently attached to the radio without fear of losing its charge. In an emergency simply break off the red protective tab and the radio will be immediately ready to turn on. An optional rechargeable lithium polymer battery is available for everyday use. The quick release rapid charger provides the ideal solution for keeping the batteries fully charged.



Battery protection tab



Optional accessory socket



KEY FEATURES

- High efficiency transmitter for maximum battery life
- Lithium primary battery for emergency use
- Novel battery protection tab protects from inadvertent use
- Battery classified as non-hazardous for shipment
- Battery provides in excess of 16hrs typical operation, even at -20°C. (10% Tx, 10% Rx, 80% Squelched)
- Lithium Polymer rechargeable battery option available with rapid charger, for everyday normal use
- High contrast, backlit LCD and keypad
- Rugged accessory socket option - waterproof to IP68 for use with headsets, helmets, fist mikes, etc.

OCEAN SIGNAL SAFESEA E100/E100G

406MHz/121.5MHz EPIRB & GPS EPIRB

SafeSea EPIRBs operate in the 406MHz satellite band and are also fitted with a 121.5MHz homing beacon and high brightness LED strobe light for fast on-scene location.

The SafeSea E100G includes an inbuilt 50 channel GPS providing fast and accurate signal acquisition (typically within 30 seconds).

At 96hrs, battery operating life is the highest in the industry, so an Ocean Signal EPIRB keeps rescue services updated with your location for longer.



High brightness LED strobe light



User replaceable, non hazardous battery



KEY FEATURES

- Choice of GPS and non-GPS models
- Meets or exceeds all International standards
- Class 2 (-20°C - +55°C) for general use
- Non hazardous battery
- User replaceable batteries with five year replacement interval
- Intuitive operating controls protected from accidental activation
- Manual bracket, manual release housing and float free housing options

Tech info

SafeSea EPIRB Mounting Options

Two optional housings are available for the SafeSea EPIRB. Manufactured in a durable and highly UV stable plastic they provide excellent protection of the unit until it is required:

- MRH100 manual release housing
- ARH100 automatic release housing, containing a hydrostatic release that automatically deploys the EPIRB if the vessel is sinking. IMO regulations require that an automatic release housing is used with mandatory fitted EPIRBs.



OCEAN SIGNAL SAFESEA S100

Search and Rescue Transponder (SART)

Dedicated radar transponder which complies with IMO SOLAS regulations. When switched on, the SART remains in a standby mode until automatically activated by an X-Band Radar sweep from any vessel in the vicinity. The SafeSea S100 transmits a series of pulses which are displayed on the ships Radar as a line of dots, providing a bearing to the survival craft. Simple, intuitive operating controls under snap-off cover prevent accidental activation.



Intuitive controls

KEY FEATURES

- Superior battery life, even at -20°C
- User replaceable, non hazardous battery
- Five year replacement interval
- Compact size for easy liferaft packing
- Supplied with telescopic pole and storage bracket
- 1 SART required per IMO SOLAS vessel (300 tonnes and above on international voyages)
- 1 SART for every 4 liferafts on RO-RO passenger vessels
- Nationally mandated vessels, including fishing vessels, passenger craft, commercial workboats, etc
- Most Super and Megayachts are required to carry a SART, especially if covered by the MCA code of practice, which is recognised by many countries.
- Voluntary fit vessels will also benefit by carrying a SART



Navionics Electronic Cartography

Navionics+

Navionics+ is the new electronic chart standard providing more content and the best value for marine areas for new customers. Simply connect to navionics.com, choose your coverage area and download!

- Everything on one card! Nautical Charts, SonarCharts and Community Edits.
- Get one year of Freshest Data updates to Nautical Charts, SonarCharts and Community Edits.
- Enhance charts for your area with our Sonar Logs upload feature
- Select the region. For coverage areas check navionics.com

Navionics Platinum+ Electronic Cartography

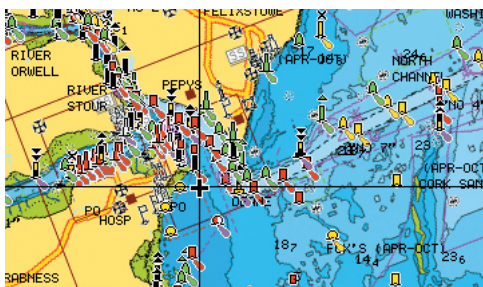
Take situational awareness to the next level with Gold features plus additional functionality! Eligible for Freshest Data updates to Nautical Charts, SonarCharts™ and Community Edits.



- 3D and Satellite Overlay
- Panoramic Port Pictures
- Dynamic Tides and Currents
- Port Services and Points of Interest
- SonarCharts high def layer
- Eligible for Freshest Data updates to Nautical charts, SonarCharts and Community Edits
- Available in two sizes (XL and XL3)

Navionics Gold Electronic Cartography

Navigate easily with the familiar paper-like display of the best charts. Eligible for Freshest Data updates to Nautical Charts and Community Edits. Get SonarCharts through Navionics updates.



- Tides & currents
- Port plans
- User-selectable safety depth contours
- Marine services with phone numbers
- Drying areas

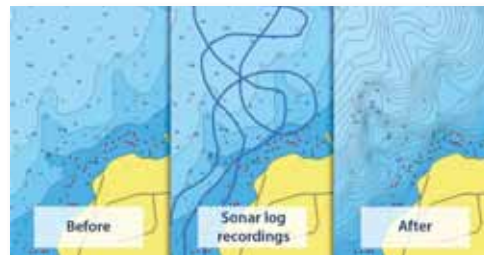
Navionics Updates

With the tremendous value of Freshest Data and the low price, the decision to update your charts is as easy to make as it is to do. So if you own a Silver or Gold chart, Navionics Updates allows you to download Navionics+ and unlock a world of value!

- Everything on one card! Nautical Charts, SonarCharts and Community Edits
- Get one year of Freshest Data updates to Nautical Charts, SonarCharts™ and Community Edits.
- Enhance charts for your area with our Sonar Logs upload feature
- Select the region. For coverage areas check navionics.com

Navionics SonarCharts High Definition Bathymetry

SonarCharts™, a separate layer included in Platinum+ and Navionics+ is an HD bathymetry map, great for locating fishing areas and revealing more bottom contour detail. It reflects ever changing conditions by integrating sonar logs from the Navionics Community with existing data. SonarCharts is updated daily and can be downloaded anytime from navionics.com.



You can even contribute yourself and obtain a better level of detail in the charts for your area. It's simple and fast:

- Record your sonar logs using your GPS plotter
- Upload the sonar logs through navionics.com
- Navionics will integrate the new data
- ...and you can download the updated SonarCharts in about one week!



Find Out More

The Freshest Data Available!
2000 updates a day, every day!

Why update your charts? Buoys change, sand bars shift, new rocks and submerged structures are discovered every day. Freshest Data provides the most current charts available.



Nautical Charts Updates

Refresh your chart online as often as you want. We add data sourced using satellite imagery, airborne laser and sonar, along with updated notices to mariners and more.

Community Edits

By being part of the Navionics Community you may contribute to building the best localised data available. With a few simple steps, you can edit your charts to indicate local data. By sharing your Edits, the Navionics Community of users will benefit by receiving them whenever they download the Freshest Data to their chart (and within seconds on their mobile device).



Find Out More

Why upgrade from Silver?

Navionics Silver is only supplied, embedded or bundled with some chartplotters (you cannot buy it as a standalone chart).

Consider the following when choosing a plotter with or without Silver:

Navionics Silver

This is a very simple, basic chart of a large cruising area (eg Europe). The advantages are that you get huge coverage, you can use your chartplotter "straight out the box" and it's great for route planning as it enables you to plan trips outside your regular cruising area.

However, there are limitations - the detail is only down to 0.5nm, there is no depth information beyond 10m (spot sounding, contours, etc.), no tidal heights, no current speed and direction, no port plans or Points Of Interest, it's not Navionics freshest data and you cannot update the Silver chart format.



Portland Bill & The Shambles - Navionics Silver



Portland Bill & The Shambles - Navionics Gold



Portland Bill & The Shambles - Navionics Platinum+

The above examples clearly show the difference in the level of detail and presentation of the same area between Silver, Gold and Platinum+. Only Platinum+ is compatible with TurboView, Navionics' exclusive software engine which enables you to switch seamlessly between 2D and 3D views.

The current generation of Navionics compatible plotters are designed to take full advantage of all the features of Navionics Gold and Platinum+ cartography. In our view it would be a waste to invest in this level of technology and to not use it to the full.

Call us now for unbiased advice and to find out more about the chart coverage of your area.



PRICES CHANGE DAILY
VISIT OUR WEBSITES FOR THE LATEST DEALS

www.mesltd.co.uk
Call +44 (0)1179 114 111



Navionics Electronic Cartography

Navionics Platinum+

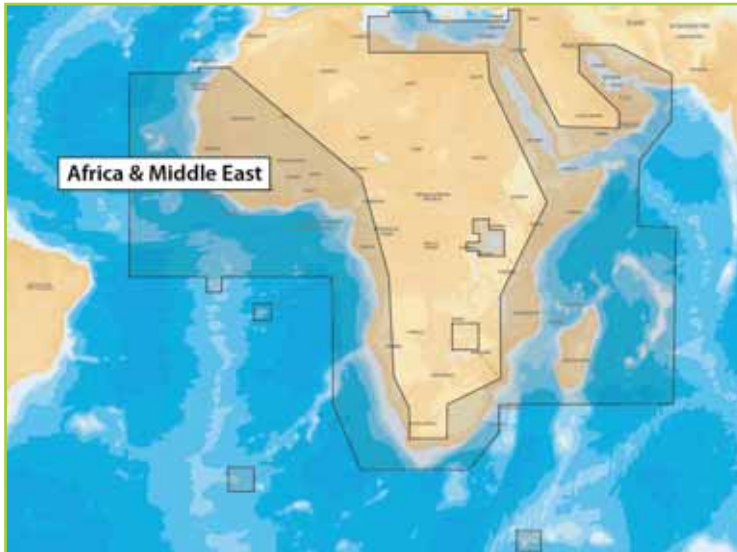
Platinum+ XL3 - Europe & Middle East



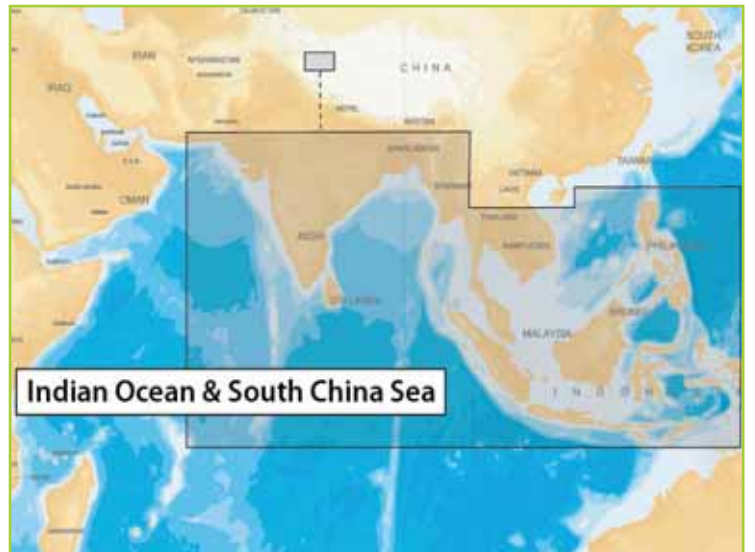
Platinum+ XL - Europe, North Africa



Navionics+, Navionics Updates, Gold XL9 - Africa & Middle East



Navionics+, Navionics Updates, Gold XL9 - Indian Ocean, S. China Sea



FDI NavigationPlanner

PC-Based Chart Viewing System

Designed specifically for Navionics charts, NavigationPlanner allows you to plan using your PC at home, on board or in the office and save directly to a compatible cartridge for your chart plotter. Backup all your navigation waypoints and routes on your PC, import data from other sources and transfer them to your chartplotter.

KEY FEATURES

- View the chart on your PC
- Load, create, edit routes and save to chart card
- Keep your own waypoint library, imported from CSV files and other sources
- Transfer data directly from the card to the plotter
- Create a route with just a few mouse clicks
- Now calculates the best time to leave taking tides into account
- Calculates the route with tides and shows the gain or loss in time taken
- View and print full details of routes and waypoints
- Measure distances, bearing, fuel use and more
- Access tide & current, sun & moonrise data - show tidal flow direction and velocity on chart. (Subject to chart data availability)



Navionics Gold

Gold Small - UK

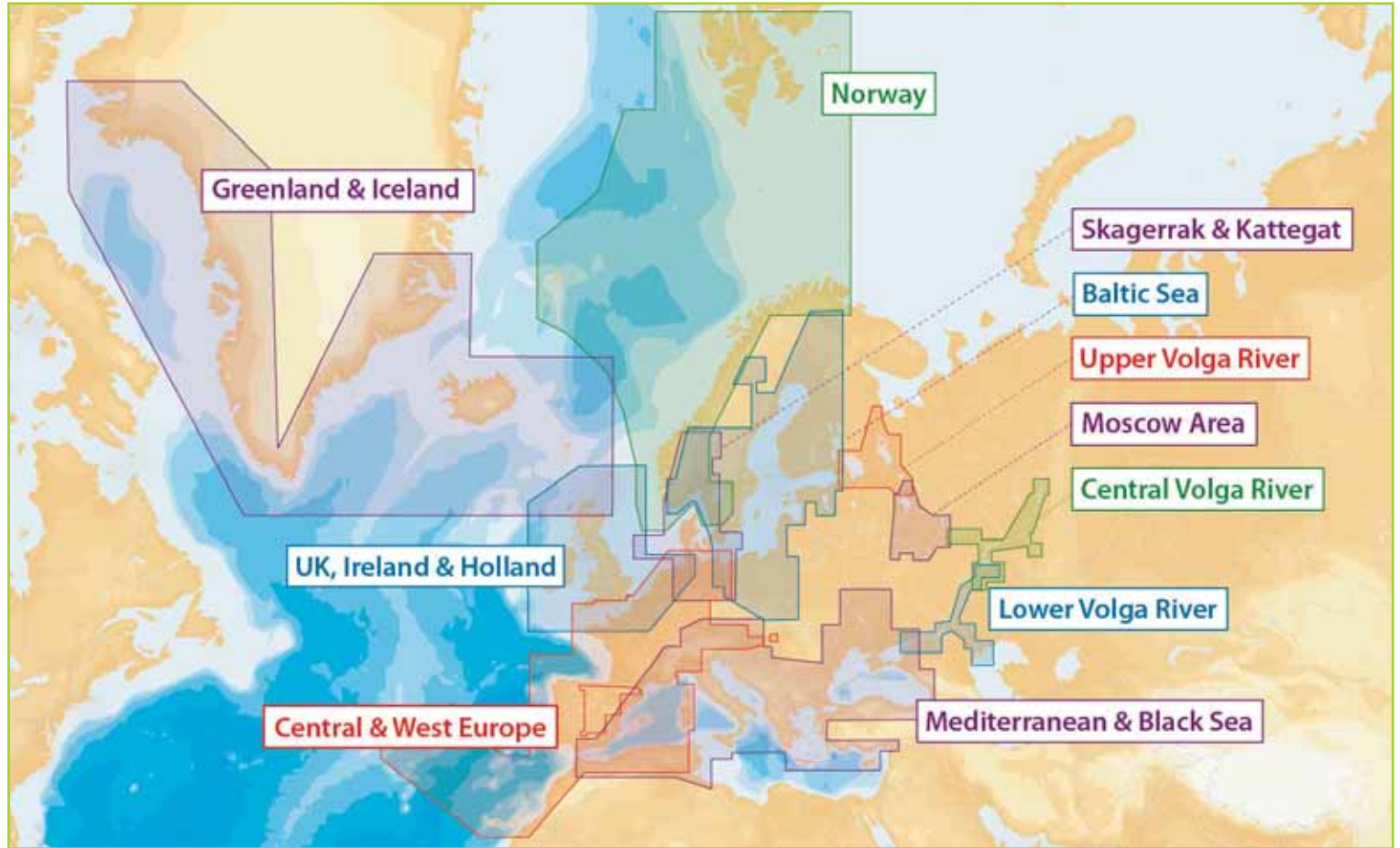
Code	Area
557	JERSEY - LE TREPORT
558	ST-VALERY - ZEEBRUGGE
559	TENBY - EXMOUTH
560	FALMOUTH - WAYMOUTH
561	START PT - CHICHESTER
562	KEYHAVEN - RYE HBR.
563	LITTLEHAMPTON - WALTON
564	BURNHAM - SCARBOROUGH
565	GRIMSBY - ANSTRUTHER
566	SCOTLAND EAST
567	SCOTLAND NORTH WEST
568	SCOTLAND WEST
569	ISLE OF JURA - BARMOUTH
570	LIVERPOOL - GOWER
571	IRELAND EAST
572	IRELAND SOUTH
573	IRELAND WEST
574	IRELAND NORTH WEST
575	IRELAND NORTH
576	SHANNON - ERNE

Navionics Electronic Cartography

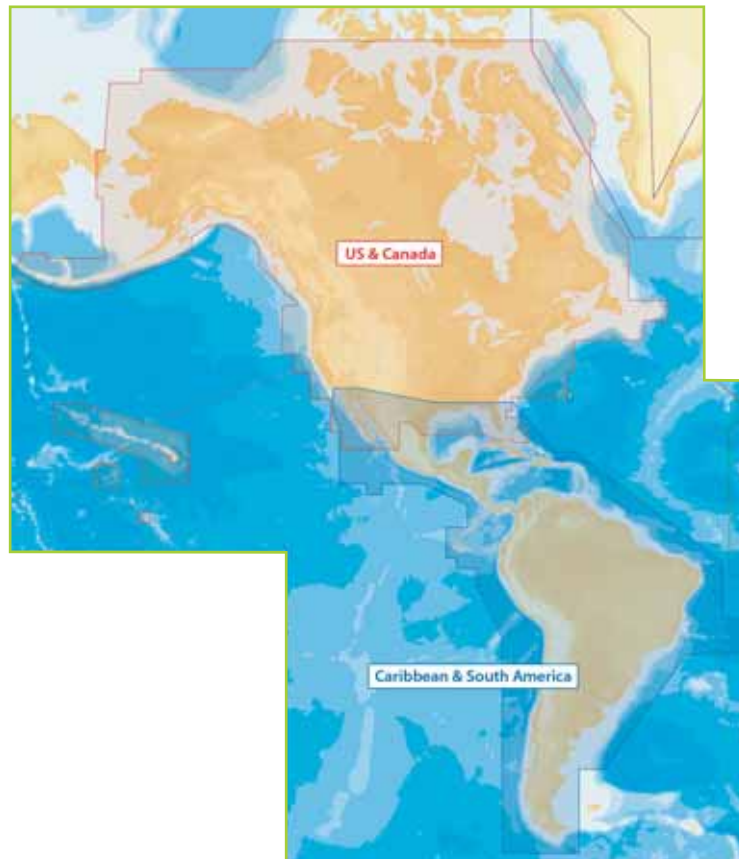
Navionics+, Navionics Updates and Gold XL9

Note: In all global areas, except the Americas, Navionics+, Navionics Updates and Gold XL9 areas are the same

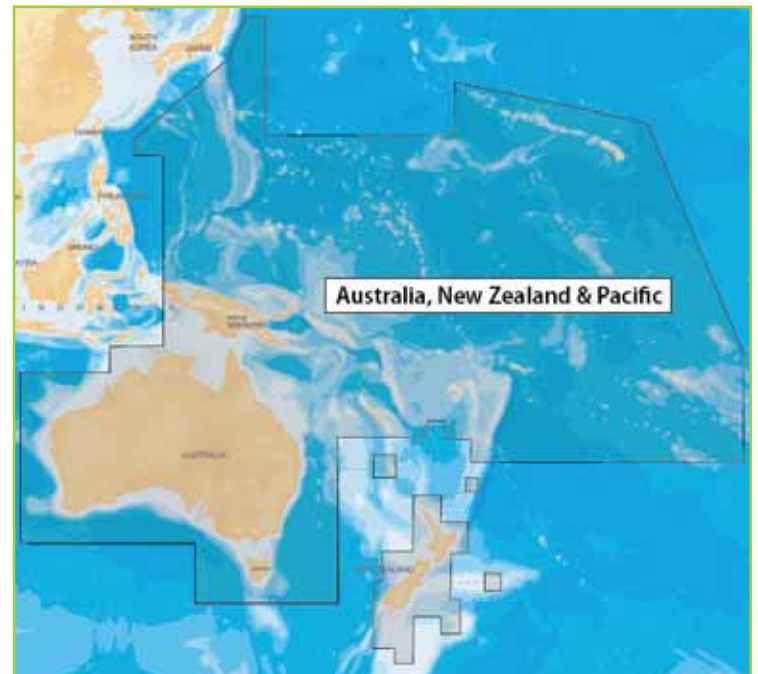
Europe



Navionics+ Americas



Navionics+, Navionics Updates, Gold XL9 - Australia, New Zealand & Pacific



This is just a small selection of the coverage areas available from Navionics. Contact us for further information if the area you're looking for is not shown here, or visit our website.



PRICES CHANGE DAILY
VISIT OUR WEBSITES FOR THE LATEST DEALS

www.mesltd.co.uk
Call +44 (0)1179 114 111



Jeppesen (CMap) Electronic Cartography



Tech info

MAX 14

New up-to-date version of C-MAP by Jeppesen charts

When it comes to MAX 14, there's no comparison. Advanced features make cruising, sailing and fishing easier, safer, and more fun. With the most accurate chart detail, versatile features and a wealth of important value-added data, we take your boating enjoyment to the MAX!



Why Update

- Wide coverage areas are now up to 3 times bigger
- Get the most accurate and current information
- Up-to-date charts help contribute to safe navigation
- C-MAP by Jeppesen charts are updated regularly and offer the best in official and reliable charting

For more information on updating your cartridge, visit jeppesen.com/lightmarine.

Check the date of your update on the label of your C-MAP by Jeppesen chart.



PC-Planner

Rewind your adventure... plan your next one

Whatever marine activity you enjoy, PC-Planner makes it easier. Plan next summer's cruise, view your course from the weekend regatta, locate a wreck to dive or fish on and download free weather forecasts.

- Plan
- Archive
- Weather
- View
- Work

Visit jeppesen.com/lightmarine

C-MAP by Jeppesen charts are available in the following technologies, sizes and media:

NT+

Local, Wide



MAX 14

Local, Wide, MegaWide



C-Map MAX Electronic Charting System



MAX is C-Map's dynamic and interactive chart technology that has revolutionised the way electronic charts look and behave. MAX brings new life to the electronic chart, combining unparalleled levels of chart accuracy and detail, striking presentation and a huge collection of new value added data.

KEY FEATURES



Embedded photos & coastal land mapping



Fully animated worldwide tide & current database



Aerial photography of ports and marinas



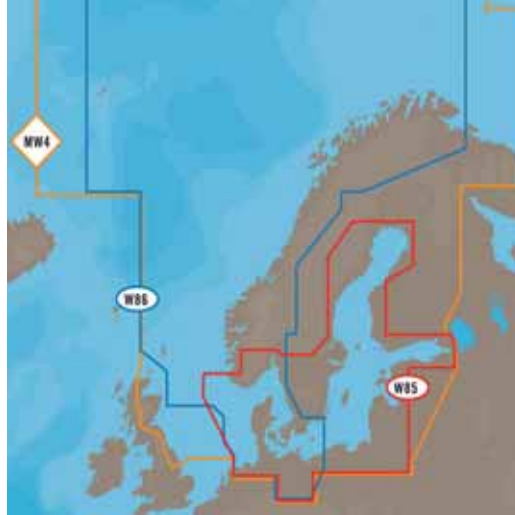
Perspective view - "rolling road" chart display

Jeppesen (CMap) Electronic Cartography

West European Coasts Megawide/Wide



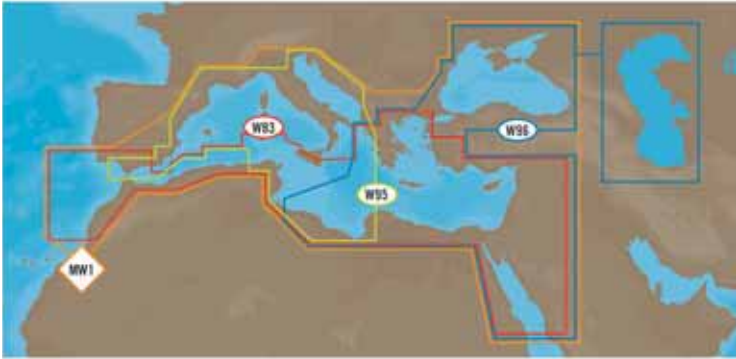
North & Baltic Seas Megawide/Wide



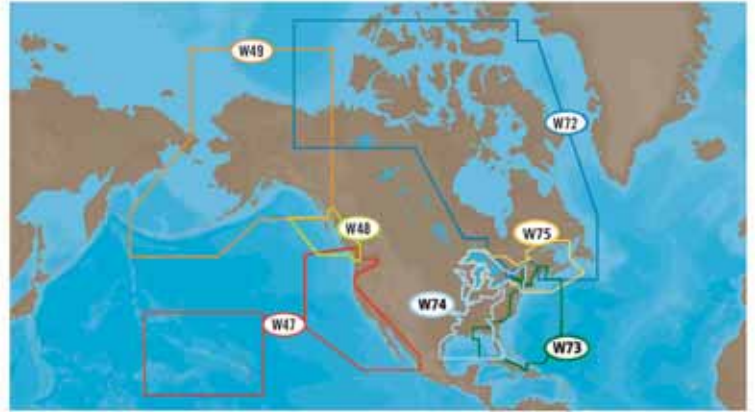
West Europe Fresh Waters Megawide/Wide



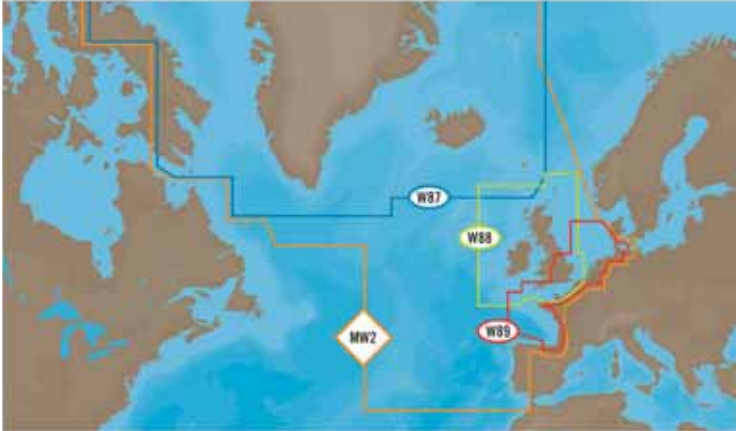
Mediterranean & Black Sea Megawide/Wide



Canada & USA Wide



Atlantic European Coasts Megawide/Wide



MAX US Freshwater Lakes Wide



North & Central America Megawide



US High-Resolution Bathymetric Charts Wide



This is just a small selection of the total C-Map coverage. If you are looking for a region not shown here, please call us for more details or check our website.



PRICES CHANGE DAILY
VISIT OUR WEBSITES FOR THE LATEST DEALS

www.mesltd.co.uk
Call +44 (0)1179 114 111



Digital Yacht Marine PC Systems

Digital Yacht Aqua2 Standard PC

Compact 12v Marine PC

Aqua Standard is designed as a general purpose, great value on board PC. Featuring the latest ultra low power, fanless, Intel Atom N2800 processor (6.5W) the complete Aqua PC system typically consumes just 20W, but provides all of the PC performance needed to run navigation software, email, surf the web etc.

Aqua PCs are supplied with Windows 8 (UK versions) and feature high efficiency DC-DC converters that allow them to be connected directly to the boat's 12v DC supply with no inverter. The Aqua Standard PC can be supplied with optional built-in Hi-Power Wi-Fi adaptor or built-in NMEA 2000 gateway.

KEY FEATURES

- Fanless design and solid state HDD for totally silent and reliable operation
- Ultra low power consumption and auto power up feature
- Intel Atom N2800 processor for low power consumption and fast computing
- Compact - measures just 30cm x 27cm x 7cm!
- 2 x NMEA Ports
- 4 x USB Ports (2xUSB3)
- Fitted with CD/DVD RW
- 64GB solid state hard drive

HOT PRODUCT



Digital Yacht GV30

AIS/VHF GPS Antenna

Regulations stipulate that all Class B AIS transponders must have a dedicated GPS as well as a VHF antenna or suitable VHF-AIS antenna splitter. The GV30 is a combination VHF/AIS and GPS antenna with twin 10m coax feeds.

The cables are terminated with a FME mini connector which makes running the cable easy, as the connector is barely bigger than the 5mm cable. TNC and BNC connectors are included.

Despite its compact size (190 x 75mm), the GV30 offers very good performance as it is specifically tuned to the AIS frequency. Also available with the AIT2000 as a bundle.



KEY FEATURES

- Combination AIS/VHF and GPS antenna
- Specifically tuned to 162MHz
- High gain GPS element
- Mini connectors for easy cable installation
- Standard 1" threaded base for compatibility with a variety of 3rd party mounts
- Under 200mm high for low profile installation

NEW FOR 2014

SUPPLIED WITH

10m cables, TNC adaptor and BNC adaptor

Digital Yacht AquaPro2 PC

Compact 12v Marine Navigation PC

Designed specifically for high speed, demanding 3D charting and bathymetric applications, AquaPro 2 has been successfully tested on the latest MaxSea TimeZero technology. For exceptional performance it uses the latest AMD Fusion APU technology, with 8GB RAM, 6 USB ports (including 2 x USB3.0), Windows 8 as standard. It can be fitted with an internal 4 port isolated NMEA interface with built in multiplexing functions, allowing complex NMEA systems to be integrated with the PC.



KEY FEATURES

- Latest AMD A6-3500 processor
- 64GB solid state hard drive, 8GB RAM
- Optimised for graphics-intensive navigation software
- 802.11n wireless adaptor for easy networking
- 6 x USB Ports
- 1090P HDMI output, Dolby 7.1 surround sound

ALL AQUA2 PCS SUPPLIED WITH

0.75m power/I/O cable, bulkhead and desktop mounting brackets, SmarterTrack Lite software, driver CD.

Digital Yacht AquaNav2 PC

Compact 12v Marine Navigation PC

A powerful marine navigation PC, with two NMEA ports, a super fast 64GB solid state hard drive, 4 GB of RAM, built-in dual channel AIS receiver, dedicated GPS Antenna and a CD/DVD RW drive. Standard connections include four USB ports, a VGA and HDMI port allowing the system to drive up to two compatible LCD monitors and all the standard system connectors for keyboard, audio and network.



KEY FEATURES

- Intel Atom N2800 processor
- Inbuilt dual channel high sensitivity AIS receiver
- Smart GPS that connects on dedicated I/O cable
- Pre-configured and interfaced so GPS and AIS work straight out of the box
- Supplied with Windows 8 home premium 32bit operating system (on UK versions)
- 2 x NMEA ports and 4 x USB ports (2xUSB3)
- Fitted with CD/DVD RW
- 64GB solid state hard drive

Digital Yacht GPS150 DualNav

50 Channel GPS/Glonass Sensor

This super accurate GPS/GLONASS smart sensor will automatically switch between the systems or the user can manually select. In DualNav mode, a sophisticated algorithm combines GPS and GLONASS data to offer <1m accuracy. The GPS150 will also be able to utilise the European Galileo positioning system when it comes online in 2018.

The GPS150 utilises the industry standard NMEA data format allowing older chart plotters as well as current generation products to take advantage of this new technology. The user can select a variety of different NMEA baud rates to allow interfacing with legacy and current systems. TurboNav™ mode will appeal to racing yachtsmen and performance users where GPS/GLONASS data is output at 10Hz (10 x faster update than normal) and with an interface speed of 115200 baud which is 24 x the speed of normal NMEA data.



NEW FOR 2014

KEY FEATURES

- Compact - only 75mm in diameter
- Designed to fit industry standard 1" mounts
- Ultra tough, waterproof construction
- Configurable 4800, 38400 & 115200 baud NMEA
- Selectable update rates from 1 to 10Hz
- WAAS/EGNOS/SBAS enabled for <1m accuracy
- Ultra low 30mA power consumption (at 12V DC)
- 5-30V DC power input
- GPS150USB version with USB connection

SUPPLIED WITH

Integral 1in 14TPI threaded base and 10m cable

Aqua Adapt PC

Modular PC System

Aqua Adapt is a new modular PC system designed to optimise PC integration into onboard navigation, communication and entertainment systems. It's based around a central PC processor utilising a powerful Intel i3 core. Its fanless design makes for totally silent, super reliable operation. What's more it only consumes around 20W of power. The Adapt series is designed to connect direct to the boat's DC battery system and operates from 8-19v DC. It ships as standard with Windows 8 64 bit preloaded.

Two optional modules are available for the Aqua Adapt PC; for long range (up to 5NM) Wi-Fi internet connections, the Communication Module incorporates a high power wifi interface with 15dBI external WiFi antenna, 10m LMR400 cable and simple RJ45 connection. The Navigation Module provides two opto-isolated NMEA ports (38400+4800 baud) and a certified NMEA2000 interface, for connecting the Adapt PC module to your boat's navigation system via USB.

KEY FEATURES

- Modular approach makes integration easy
- 64GB solid state drive, 8GB RAM
- Navigation Module Option (2x NMEA0183, 1 x NMEA 2000)
- Communication Module Option (long range Wi-Fi up to 5NM)
- Inbuilt 802.11 b/g/n WiFi
- Windows 8 (64bit)
- Fully compatible with SmarterTrack 2014 software



NEW FOR 2014

Digital Yacht PC Software & Network Integration

Digital Yacht Smartertrack

Navigation Software

Ideal for anyone with a dedicated Navionics Gold, Platinum or Platinum+ chartplotter or is new to electronic charting and wants simple to use PC navigation software with excellent AIS support.

SmarterTrack turns your Windows XP/Vista/7&8 PC into a navigation tool that overlays your position and AIS targets onto the chart. AIS features include colour coded targets, user selectable target labelling, fully configurable CPA and TCPA alarms, visual indication of CPA, AIS targets drawn to scale and more. Programming routes, checking tides, depths or nav-aids on the chart and a host of other navigation tasks can be performed simply and effortlessly.



KEY FEATURES

- NMEA2000 compliant version available
- Weather overlays (GRIB files)
- Transfer route and waypoints to your chartplotter
- Optimum departure time capability from tidal data
- Displays all NMEA instrument data with customisable instrument displays
- Full set of configurable alarms
- Display wireless NMEA0183 data from Digital Yacht iAIS, WLN10 & Boatranet

EDITOR'S CHOICE

SUPPLIED WITH

CD-ROM, License Voucher and Manual (NMEA2000 version supplied with NMEA2000 to USB interface)

Digital Yacht Smartertrack Lite

PC AIS Display Software

A simple but effective graphical AIS display program for any PC running Windows XP/Vista/7&8. AIS data is meaningless unless it shows where the targets are in the real world relative to your vessel. SmarterTrack LITE does this by plotting all surrounding AIS targets on a world map or, as you zoom in, on a radar type screen with variable range rings. Features include colour coded targets, user selectable target labelling, target course lines and fast AIS information recovery, making it the ideal introduction to AIS software.



KEY FEATURES

- Graphical AIS display software plots all detected AIS targets on world map
- Automatically switches to AIS "Radar" type display as you zoom in
- Colour coded AIS Targets with course lines
- Each AIS target shown with user selectable label
- Can be upgraded to full SmarterTrack package

EXPERT ADVICE

SUPPLIED WITH

Installation CD-ROM and manual

Digital Yacht iNAVHub

12/24v Wireless Hub

iNAVHub combines wireless networking and NMEA data transfer in one easy to install box. Similar to the popular iNavConnect, it creates a wireless network on board the boat that any wireless device can connect to.



Once connected iPhones, iPads, PCs, etc. can receive NMEA0183 data wirelessly for use in iNavX and other navigation apps, whilst also sharing the long range internet connection created by Digital Yacht's WL510.

iNAVHub is designed to fully integrate with Digital Yacht's latest WL510 long range Wi-Fi adaptor. Simply plug the WL510 into the dedicated network socket and when you arrive in port and connect the WL510 to the marina's hotspot, everyone on board will be able to share the long range internet connection.

KEY FEATURES

- Easy to install IP54 black box solution
- All-in-one solution for distributing your wireless internet and NMEA data
- Integrates with Digital Yacht's latest WL510 long range Wi-Fi Adaptor
- Includes an NMEA interface that outputs NMEA0183 data wirelessly to multiple iPhones, iPads, PCs, etc. via UDP
- Creates an 802.11n wireless network onboard with full WEP/WPA/WPA2 encrypted password protection
- 5dB detachable antenna

SUPPLIED WITH

1m Power cable, 1m Network Cable, Wifi Antenna and User Manual

Digital Yacht WLN10 & WLN10HS

Wireless NMEA Server

Innovative, cost effective wireless device which creates its own 802.11b+g wireless access point which any other wireless device can connect to, such as a Smartphone, Netbook or Laptop. Connect it to any device or system that has an NMEA0183 output - either 4800 or 38,400 baud and it'll automatically read the data and transmit it wirelessly to another device via TCP/IP protocol to a suitably compatible application such as SeaPro and Rose Point Coastal Explorer (PC), MacENC (Macs) or iNavX (iPhone/iPad).



KEY FEATURES

- Easy to install IP54 black box solution
- Can be fitted to any AIS unit, instrument system or device with an NMEA 0183 output
- WLN10 - 4800 baud NMEA data rate
- WLN10HS - 38,400 baud NMEA data rate
- Free iAIS App for iPhone, iPod or iPad

SUPPLIED WITH

1m Power/Data cable, Wifi Antenna, software CD and User Manual

Digital Yacht MUX100

NMEA Multiplexer

With modern AIS receivers and transponders outputting high speed NMEA0183 data at 38400 baud, it is often difficult to connect AIS data and low speed GPS or instrument data at 4800 baud to some chartplotters and/or PCs with just one NMEA 0183 input. With the MUX100, Input 1 accepts AIS data at 38400 baud and Input 2 accepts GPS/instrument data at 4800 baud. All data received on both inputs is then multiplexed and transmitted on Output 1 at 38400 baud.

KEY FEATURES

- Re-transmits high speed GPS data at low speed
- Gives priority to GPS on input 1 but switches to input 2 if position lost on input 1
- Opto isolated inputs and true NMEA differential output capable of driving several devices

SUPPLIED WITH

0.75m Power/Data cable and manual



NEW FOR 2014

Digital Yacht HSC100

Fluxgate Compass Sensor

Provides heading data to chartplotters, radar and instrument systems. Unlike most low cost sensors, the HSC100 outputs at 10Hz, required for MARPA target tracking and accurate radar overlays. Industry standard NMEA 0183 HDG output.

KEY FEATURES

- Gimballed to 45°
- Waterproof to IPX7
- Automatic calibration and manual compass offset
- Additional AD10 heading output for Furuno systems

SUPPLIED WITH

15m Cable and manual



PRICES CHANGE DAILY
VISIT OUR WEBSITES FOR THE LATEST DEALS

www.mesltd.co.uk
Call +44 (0)1179 114 111



Digital Yacht WiFi Access & Intranet Systems

Digital Yacht BOATraNET

Wireless Navigation Server

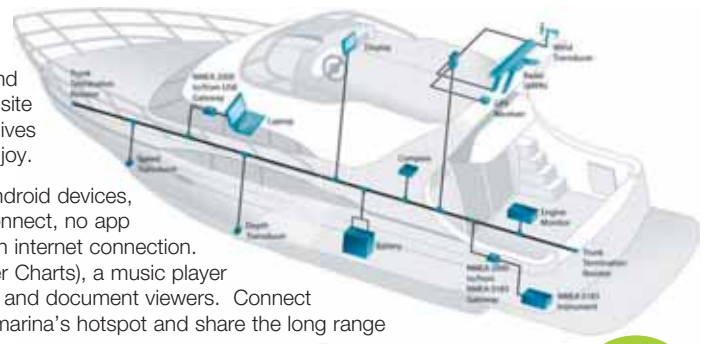
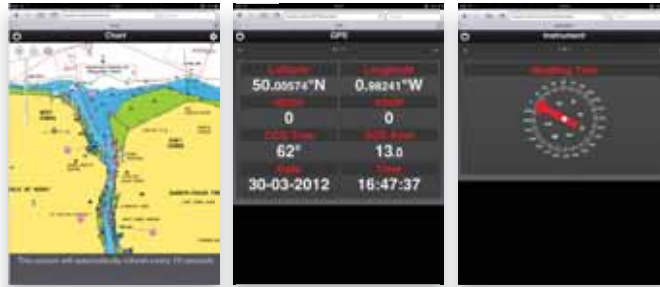
A truly unique and innovative product that "e-enables" your existing navigation system and creates a dynamic local intranet for your boat. Imagine having your own automatic website that shows visitors to your boat all of the most important navigational information and gives them access to the photos, documents and music that you want them to share and enjoy.

BOATraNET creates a wireless hotspot that works with iPhones, iPads, iPod Touch, Android devices, smart phones, laptops, Windows, LINUX and Mac OS X PCs. Anyone on board can connect, no app required, simply view data with the mobile device's web browser even at sea without an internet connection. BOATraNET incorporates a Navionics based chartplotter (with optional embedded Silver Charts), a music player that can output to your boat's hifi or stream music to your wireless devices, plus photo and document viewers. Connect BOATraNET to one of Digital Yacht's long range wifi adaptors you can connect to the marina's hotspot and share the long range wifi connection with everyone on board when you are in the marina.

BOATraNET is fully expandable - software updates, data and media can easily be transferred via USB memory sticks.

KEY FEATURES

- 12/24v DC
- Ultra rugged fanless hardware consumes just 1.5A
- Creates dynamic HTML5 compliant web pages accessible by anyone on the boat (access via password)
- Apache Web Server
- 802.11n Wireless LAN
- Two NMEA0183 Ports
- Optional NMEA2000 Gateway
- Optional long range wifi adaptor



HOT PRODUCT



Digital Yacht iNAVConnect

12v WiFi Router

Easily setup a wireless network on your boat, that is pre-configured and optimised for transferring Routes/WPs between your Navionics iPhone/iPad App and a Raymarine C/E Series plotter or for controlling your Fusion Stereo using the Fusion Link App. Full integration with Digital Yacht's WL510 long range Wi-Fi adaptor means everyone on board can share the long range internet connection when you arrive in port and connect to the marina's hotspot.



KEY FEATURES

- 12v or 24v DC operation
- Integrates with WL510 long range Wi-Fi Adaptor
- Creates 802.11n wireless network with full WEP/WPA/WPA2 encrypted password protection
- Preconfigured for Raymarine and Fusion systems
- Easy to install IP54 black box solution

SUPPLIED WITH

1m Power cable, 1m Network Cable, Wifi Antenna

Digital Yacht WL60

Wi-Fi Booster

Compact all-in-one system which should boost your Wi-Fi range to over 1 mile in perfect conditions. It comes with software and drivers for Windows XP/Vista/7/8, Mac and LINUX.

KEY FEATURES

- 802.11n 300mW Wi-Fi modem
- High gain (8dBm) omni-directional antenna
- 4 x suction cup mount
- USB bus powered, Plug & Play connection

SUPPLIED WITH

Mounting bracket, 5m USB cable, Driver CD



Digital Yacht WL450

1m Smart WiFi Antenna

Smart wifi system with all the electronics encapsulated into its rugged 1m omni-directional antenna. It connects to PC or Mac systems via a simple network connection with power and data carried to the antenna via a thin ethernet cable. A 10m cable is supplied as standard with a 20m option also available. The WL450 is fitted with a standard 1" threaded base so it can mount onto a variety of deck, pole and rail bases. With a network interface, there are no complicated drivers or software to install. Simply enter the IP address of the antenna into any browser and you can access and adjust all the WL450 features and parameters. Range is dependent upon many local conditions but reliable distances of up to 3NM are possible with this system.

KEY FEATURES

- Tough GRP design
- Omni-directional performance
- Ranges up to 3NM
- Easy browser interface
- MAC, Linux and PC ready
- Plug 'n play LAN network connection

SUPPLIED WITH

Power over ethernet (POE) DC adaptor and 10m cable (20m option)

- Single cable for power and data
- 12v DC Operation
- Fits standard 1 inch mounts
- Compatible with iNavConnect and iNavHub routers allowing the WiFi connection to be shared across multiple users.

NEW FOR 2014



Digital Yacht WL510

High Power Wi-Fi System

The WL510 allows boat owners to connect to Wi-Fi hot spots. With internet connectivity on board you can download the latest weather or chart updates as well as having a mobile office on board. The system has a compact 12v DC below deck 600mW booster/modem and an external 12dBm high gain antenna.

The WL510 modem connects to the PC via a regular RJ45 network cable for plug 'n' play, driver free operation on Windows XP/Vista/7/8, Mac OS X 10.3 (and higher) and LINUX operating systems. It supports 802.11b/g protocols as well as WEP/WPA/WPA2 encryption. Even if you already have Wi-Fi access you will still want to take advantage of the superior range and speed that this system will offer. Wi-Fi range depends on many factors, we've seen ranges of up to 4-6 miles with this low cost system.

KEY FEATURES

- Ideal for permanent installations and new builds
- Easy to set up and control from any browser via web-based interface
- 600mW Wi-Fi modem and high gain (12dBm) omni-directional antenna
- Industry standard 1in x 14 TPI thread mount

SUPPLIED WITH

WiFi modem, antenna with 10m cable, base mount, 1m network cable, User Manual



- Supplied with 10m of low loss coax cable
- 1m network cable can be extended with any CAT5 network cable up to 50m
- Requires connection to boat's 12v supply
- Windows XP/Vista/7/8 compatible
- Mac OS X and LINUX compatible



Digital Yacht AIS Systems

Digital Yacht AIS100/AIS100USB/AIS100PRO AIS Receivers

These value priced, entry level AIS receivers are Digital Yacht's most cost effective solution for adding AIS to your boat. Three models are available, all with the same dual frequency receiver for use with existing AIS compatible chart plotters. Connected to an existing VHF antenna via a splitter or to a dedicated AIS antenna, you can receive all AIS targets typically within 20 miles of your boat.

KEY FEATURES

- Low cost entry level AIS receivers
- **AIS100** - NMEA0183 output
- **AIS100USB** - USB output
- **AIS100PRO** - NMEA0183 and USB output, multiplexed NMEA0183 input
- Requires VHF antenna, dedicated AIS antenna (optional accessory) or splitter
- Easy to install IP54 black box solution

SUPPLIED WITH

Integral mounting brackets, 0.75m power/data cable, AIS Lite software on CD and User Manual



Digital Yacht AIS200N2NET

Class B AIS Receiver

Top of the range AIS receiver with Tri-Output connectivity and the very latest AIS technology, to give unrivalled levels of reception and data through put. With easy connections to all of the latest PC navigation software and chart plotters, the AIS200N2NET matches and exceeds the performance of other more expensive, big brand AIS receivers. With NMEA 2000, dual NMEA 0183 and USB outputs connection, interfacing and installation is simple and the AIS200N2NET supports all of the latest AIS message types including AIS SARTs, AtoNs and base stations.

KEY FEATURES

- Brand new AIS receiver design
- Rugged IPX5 aluminium housing
- Plug and Play USB interface
- Two NMEA 0183 outputs (38,400 baud)
- Multiplexed NMEA input for single NMEA GPS+AIS data output at 38,400 baud

SUPPLIED WITH

0.75m Power/Data cable, 0.75m USB cable, 0.75m NMEA 2000 cable, AIS Lite software on CD. Requires VHF antenna, dedicated AIS antenna or splitter.



Digital Yacht S1000

AIS Smart SART

The S1000 is a fully IMO compliant and approved AIS SART (Wheel Marked) which once activated, will display a target on any Class A or B transponder system, AIS receiver or SART alarms like the **AIS Lifeguard**. As such it greatly aids recovery of the casualty or liferaft.

The S1000 utilises specialist VHF antenna technology to offer exceptional range (typically up to 10NM) and has a battery life of 96 hours under operation. It comes with a storage bag and bracket mount and has an integrated 1m telescopic pole so it can be used in a liferaft. The integrated 50 channel GPS offers a very fast time to first fix (typically under 40 seconds) and thereafter position information is transmitted 8 times per minute. The SART shows as a SART target on any AIS system and a safety message is sent every 4 minutes. The S1000 SART also offers considerable safety benefits for both commercial and leisure users and should be part of any safety pack for coastal or ocean sailing.

KEY FEATURES

- Inbuilt 50 channel GPS
- 96 hour battery life
- Specialist VHF antenna technology for superior performance
- LED indications for test and activation
- When activated transmits position 8 times per minute
- Sends SART ACTIVE safety message every 4 minutes
- Easy to change, low cost battery replacement

SUPPLIED WITH

Mounting bracket, U-bolts, 10m buoyant lanyard, 1m pole mount, storage bag



NEW FOR 2014

Digital Yacht AIS Life Guard

AIS Man Overboard Alarm

The world's first AIS MOB Alarm designed to work with the new generation of AIS SARTs. Many existing AIS compatible chartplotters don't fully support AIS SARTs, but connect the AIS Life Guard to an AIS receiver and you can have a complete working AIS SART man overboard system. Operation is automatic, simply connect the AIS Life Guard to the AIS receiver's NMEA output and it will listen to all AIS traffic.

An AIS SART transmission is indicated by the internal alarm and red warning light, it can also be connected to an external alarm. Both AIS Message 1 and Message 14 are detected, as well as AIS SART test messages for testing your AIS SART prior to departing port. It is compatible with all Digital Yacht AIS receivers and transponders and it is designed to operate on 12v or 24v DC systems.



KEY FEATURES

- World's first dedicated AIS Man Overboard Alarm system
- Listens to AIS data on NMEA0183 Input
- Alarms when AIS SART message 1 and 14 are detected
- Internal 95dB buzzer with option to drive external alarm (not supplied)
- Audible and Visual Alarms
- Push button to silence alarm (short press) and reset alarm (long press)
- Easy to install IP54 black box solution

SUPPLIED WITH

Integral mounting brackets, 0.75m Power/Data cable and User Manual

Digital Yacht iAIS

Wireless Tri-Output AIS Receiver

The world's first AIS receiver that links wirelessly with the latest iPhone, iPad and iTouch devices. Consisting of a high performance dual channel AIS receiver and an integrated 802.11b+g wireless access point, the iAIS also multiplexes any other NMEA data available - GPS, depth, speed and wind etc., all of which is available to any compatible application. By using the boat's own GPS, even an iPod Touch or iPad that does not have an internal GPS can now be used for navigation and superior performance will also be seen on an iPhone.

The iAIS also has an NMEA0183 and USB interface to output data to a PC or a dedicated plotter. The free iAIS app from the App Store is a simple AIS display program, for more advanced use Digital Yacht recommends the iNavX app (www.inavx.com). Compatible with Navionics charts, iNavX provides a complete set of navigation functions that turns your Apple device into a full function chart-plotter with waypoints, route and tidal data and GRIB weather data overlay.



KEY FEATURES

- Tri-output - WiFi, NMEA 0183 and USB
- Integrated 802.11b+g wireless access point
- Fully compatible with iNavX navigation application for Apple mobile devices
- Simple "fit and forget" black box solution
- Requires VHF antenna, dedicated AIS antenna (optional accessory) or splitter

SUPPLIED WITH

Mounting brackets, 1m Power/Data cable, 1m USB Cable, iAIS app (from Apple App Store), software CD and User Manual

HOT PRODUCT



PRICES CHANGE DAILY
VISIT OUR WEBSITES FOR THE LATEST DEALS

www.mesltd.co.uk
Call +44 (0)1179 114 111



Digital Yacht AIS Systems

Digital Yacht AIT2000

Black Box AIS Class B Transponder

This ultra-compact Class B Transponder uses the latest AIS Transponder technology to squeeze more performance and interfacing options in to a housing that is half the size of the previous generation. Featuring a remote silence button option, two NMEA 0183 Inputs and Outputs, NMEA 2000 and USB connections, the AIT2000 is the perfect AIS transponder solution for all light marine vessels up to 300 tons. Configuration of your vessel's fixed data such as MMSI, call sign, boat name, dimensions etc. is made easy with the Windows and Mac compatible pro-AIS2 software included. As well as transmitting your own vessel's position so that other AIS equipped vessels know where you are, the AIT2000, when connected to an existing VHF antenna (via a splitter) or dedicated AIS antenna, will receive all AIS targets within range of your boat - typically up to 30NM.



KEY FEATURES

- Easy to install black box solution
- Latest generation AIS technology featuring new AIS transponder design
- Ideal for use with existing plotter and radar systems
- Built-in high performance 50 channel GPS receiver (ideal also as a backup GPS)
- USB Interface for simple plug and play connection to a PC or Mac
- Includes N2Net interface and cable for connection to NMEA 2000 network
- 2 x NMEA0183 outputs - one high speed (38,400 baud) with AIS + GPS + multiplexed data and the other 4800 baud for GPS output to DSC VHF Radio
- Comes complete with GPS antenna with integral 1"x14TPI thread mount
- Requires VHF antenna or dedicated AIS antenna (available as optional accessory) or splitter (SPL250)
- Remote Silence Switch option
- Supplied with programming software for user programming

SUPPLIED WITH

0.75m Power/Data cable, 0.75m USB cable, 0.75m N2Net cable, GPS Antenna with 7.5m cable, AIS software on CD and User Manual

Digital Yacht ANT200

AIS Smart Antenna Receiver

Perfect "all in one" AIS Smart Antenna solution for small boats, particularly RIBs, sports boats and small yachts, where dry space to mount black box AIS units is limited.

KEY FEATURES

- High performance dual channel AIS receiver for use with existing chartplotter and radar systems
- Multiplexed NMEA input for single NMEA GPS
- High speed (38,400 baud) NMEA output of both GPS and AIS data to chartplotter, radar etc
- Integral 1in x 14 TPI thread for standard VHF mounts

SUPPLIED WITH

15m Power/Data cable, AIS Lite software, User Manual



HOT PRODUCT

Digital Yacht uAIS

USB Powered AIS Smart Antenna Receiver

Perfect "all in one" solution for anyone using a Laptop on a small boat that wants to receive AIS data. Uses standard Windows XP/Vista/7&8 drivers and is automatically mapped to an available "virtual" com port, which your PC software can read. Also compatible with Mac OS X and all LINUX Kernels since V2.4.20. For use with any AIS compatible PC navigation software, such as the latest SmarterTrack, MaxSea, SeaPro, Nobeltec and RosePoint applications.

KEY FEATURES

- Integral 1" x 14 TPI thread for fixing to standard VHF mounts
- Simple plug and play USB connection to a PC
- High performance dual channel AIS receiver
- High speed NMEA output (38,400 baud)

SUPPLIED WITH

5m USB cable, AIS Lite software, User Manual



Digital Yacht AISnet

Internet Base Station

AIS base station receiver for use at home or in the office. With the same high performance dual channel AIS receiver as the rest of the Digital Yacht range, AISnet features an ethernet socket so that you can connect it to your broadband router and send AIS data to an online AIS tracking service. There are now a large number of websites which offer a view of AIS equipped vessels on a background chart allowing users to check the position and identity of ships and yachts. If you are close to the coast and you would like to contribute your data to one of these sites, simply register with the company and they will give you an IP address and port number.

It takes seconds to program the IP address and port into AISnet, which then starts sending your local AIS data across the internet to be displayed on the site. It is also possible to view the AIS data on your PC using the free SmarterTrack Lite software included with AISnet. Simply plug the USB connector into your PC and the AIS data will appear on your PC and still be transmitted over the internet.

KEY FEATURES

- Integrated ethernet network controller for supplying AIS data to AIS websites
- High performance dual channel AIS receiver
- Simple configuration via free setup program
- USB Interface for simple plug and play connection to a PC

SUPPLIED WITH

UK/Euro/US mains adaptor, 1m USB cable, AIS Lite+ setup software, manual



SEEN IT FOR LESS? WE WON'T BE BEATEN ON PRICE!

Digital Yacht SPL2000

AIS Antenna Splitter

Digital Yacht's new, zero loss SPL2000 AIS-VHF antenna splitter allows an existing antenna to be used for both AIS and VHF (DSC) and even with an AM/FM radio. Unlike most splitters, it can also be used with a Class B transponder system and it incorporates special circuitry to ensure safe operation of the two transmitting devices.

KEY FEATURES

- Fail safe operation
- Works with all Class B transponders and receivers
- 12v or 24v Operation and low power consumption
- AM-FM radio antenna connection for standard car stereo
- Patented ZeroLoss™ technology for exceptional performance
- Makes installation of an AIS receiver or transponder very quick and simple

SUPPLIED WITH

0.75m PL259 and BNC Coax interconnect cables, 0.75m power lead, manual



Digital Yacht NavLink

Wireless NMEA Server

With more and more equipment now using NMEA 2000 networking, being able to easily connect the network data to mobile devices such as smart phones, tablets and laptops is becoming an important consideration. NavLink converts NMEA2000 data into a wireless data feed that can be received by any mobile wireless device. Using standard NMEA data formats, the WLN2Net is compatible with all software applications that support TCP (single device) or UDP (multiple devices) data transfer.

KEY FEATURES

- Supports Bi-Directional communication for driving an Autopilot
- Free iAIS App for iPhone, iTouch or iPad
- Creates a wireless access point and then transmits data via TCP/UDP link
- Single "plug and play" connection to the NMEA2000 network
- Optional USB connection for providing NMEA2000 data to the boat's computer
- Fully compatible with popular iNavX navigation app for Apple mobile devices

SUPPLIED WITH

1m NMEA2000 cable, Wifi Antenna and User Manual (1m USB cable option)



EXPERT ADVICE

Digital Yacht Commercial AIS Systems

Digital Deep Sea

Introduction To Digital Deep Sea

Digital Deep Sea is Digital Yacht's sister division that designs and manufactures products to meet the needs of the fishing, workboat, naval, deep sea, superyacht and commercial sectors. Digital Deep Sea systems are designed for demanding professional conditions and minimum in service costs, offering great performance and terrific value for the professional mariner.

Digital Deep Sea CLA1000

Class A AIS Transponder

A Class A AIS transponder is a mandatory fit on all commercial vessels over 300 tons and is also required on many smaller passenger carrying vessels. The CLA1000 meets all the global approvals and can consequently be fitted on any IMO vessel. It provides an automatic transmission of the vessel's own position, speed and heading to other AIS equipped vessels within VHF range.

It features a large LCD display, which lists all AIS targets within range and can also provide a graphical target plot. All standard IMO specified alarms are supported and the remote break out box provides all of the sensor and NMEA connections for other IMO approved equipment. Measuring just 195mm x 105mm, the CLA1000 is currently one of the world's smallest Class A systems available.

It also incorporates a universal pilot plug which allows quick and easy connection of a PC running electronic chart plotting software, allowing GPS and AIS data to be overlaid onto the chart. Digital Deep Sea have developed their own range of PC programs and accessory cables which allow quick and easy programming of static data into the transponder without the use of the dedicated display.

KEY FEATURES

- Fully approved and MED Wheel Marked Class A AIS transponder
- Full Class A functionality with dedicated controller
- Ultra compact design with 240x128 pixel backlit LCD display
- Automatic transmission of vessel's own position, identity, speed and heading to other AIS equipped vessels within VHF range
- Easy soft key and rotary encoder operation
- Positively identify other AIS targets with name, call sign and MMSI data



HOT PRODUCT

- See an overlay of targets on a graphical plot
- Pilot plug for PC connections
- Remote break out box for interfacing with ext alarms, ECS and ECDIS systems
- Inbuilt GPS with GPS antenna supplied

SUPPLIED WITH

PC tracking software, GPS antenna. VHF antenna required (optional accessory)

Digital Deep Sea ARX200

Class B AIS Receiver

Top of the range AIS receiver with Tri-Output connectivity and the very latest AIS technology, to give unrivalled levels of reception and data through put. With easy connections to all of the latest PC navigation software and chart plotters, the ARX200 matches and exceeds the performance of other more expensive, big brand AIS receivers. With NMEA 2000, dual NMEA 0183 and USB outputs connection, interfacing and installation is simple and the ARX200 supports all of the latest AIS message types including AIS SARTs, AtoNs and base stations.

KEY FEATURES

- Brand new AIS receiver design
- Rugged IPX5 aluminium housing
- Plug and Play USB interface
- Two NMEA 0183 outputs (38,400 baud)
- Multiplexed NMEA input for single NMEA GPS+AIS data output at 38,400 baud



NEW FOR 2014

SUPPLIED WITH

0.75m Power/Data cable, 0.75m USB cable, 0.75m NMEA 2000 cable, AIS Lite software on CD. Requires VHF antenna, dedicated AIS antenna or splitter.

Digital Deep Sea CLB2000

Class B AIS Transponder

The perfect solution for all commercial vessels up to 300 tons not mandated to fit a Class A. It uses the latest AIS transponder technology to squeeze more performance and interfacing options into an ultra-compact housing. The three outputs - NMEA 0183, NMEA 2000 and USB allow it to work with every AIS compatible chartplotter or software package on the market today.

KEY FEATURES

- 12v and 24v operation
- Built-in high performance 50 channel GPS receiver (ideal also as a backup GPS)
- Plug & Play USB interface
- Two NMEA 0183 Inputs and Outputs
- High speed NMEA output (38,400 baud) compatible with industry standard plotters
- NMEA 2000



SUPPLIED WITH

0.75m Power/Data cable, 0.75m USB cable, 0.75m N2Net cable, Combo GPS/VHF Antenna with 10m cable, AIS software on CD and User Manual

Digital Deep Sea Pilot Plug Cable

Class A PC Pilot Plug USB Connection Cable

Allows Commercial Pilots etc to connect their laptop to a Class A Transponder via its Pilot Plug. The 1.8m cable also allows some Class A transponders to be configured with the static AIS data and / or mandatory voyage data that must be programmed in before starting a passage. **NEW FOR 2014** - optional 10m extension cable allows you to extend the cable without increasing the USB cable length, which is limited to 5m (sold separately).

KEY FEATURES

- Bidirectional data connection
- Confirms to the IMO SN/Circ.227
- Fully NMEA 0183 compatible (differential RS422)
- Built-in indicator lights flash to show data is being received and transmitted
- Easy plug and play connection to most computers (Windows/Mac/LINUX)



SUPPLIED WITH

1.8m Cable, Driver CD with SmarterTrack Lite AIS software, User Manual

Digital Deep Sea PilotLINK

Class A AIS WiFi Interface

PilotLINK connects to the Pilot Plug on a Class A AIS transponder and creates a WiFi navigation network on board the vessel which allows AIS and GPS data from the Class A to be sent directly to any connected mobile devices such as phones or tablets. Compatible with iOS, Android, PC & Mac based systems.

KEY FEATURES

- Creates a wireless access point, typical range 30m
- Supports bi-directional communication for configuring the transponder
- Free iAIS App for iPhone, iPod or iPad
- Transmits data via TCP/UDP link
- TCP allows single device connection while UDP allows multiple devices to receive the data
- Powered from internal 9v PP3 battery or optional external USB power source



SUPPLIED WITH

1m Pilot Plug cable, User Manual and CD including SmarterTrack Lite software



PRICES CHANGE DAILY
VISIT OUR WEBSITES FOR THE LATEST DEALS

www.mesltd.co.uk
Call +44 (0)1179 114 111



KVH Satellite Communication & Satellite TV

KVH TRACPHONE V3

Voice and Broadband Internet Access

At 14.5 inches (37 cm) in diameter, the TracPhone V3 is the world's smallest maritime VSAT antenna.

Designed for boats as small as 30 feet, TracPhone V3 meets all your data and phone needs at an affordable price to stay connected.

With airtime rates 1/10th the cost of Inmarsat it's the perfect solution for staying in touch.



HOT PRODUCT

KEY FEATURES

- Complete with 39cm antenna, ACU and modem
- ViaSat Arclight® spread spectrum technology for seamless global roaming
- Dynamic, gyro-stabilised tracking
- Download speeds as fast as 2 Mbps
- KVH's Enhanced Voice Service technology for crystal clear calling
- Ultra-high efficiency antenna using KVH's RingFire™ design and groundbreaking dielectric feed rod technology for excellent reception even in bad weather.
- No need to hook up the antenna to the ship's gyro compass – installation has never been simpler!

KVH TRACPHONE V7

Broadband Internet Access

TracPhone V7 meets all your high speed data and phone needs.

Enjoy high-quality, consistent, always-on broadband data connections, multiple voice telephone lines, and dramatically reduced service costs thanks to mini-VSAT Broadband's modern spread spectrum satellite technology. This service is available via the TracPhone V7 and its fully integrated below-decks modem and control unit. A fraction of the size of standard 1-meter VSAT systems, this solution offers easy connections to shipboard networks, fully stabilised tracking, a remarkable reduction in the cost of hardware and installation, and all with no compromise in performance!



EXPERT ADVICE

KEY FEATURES

- Seamless regional roaming
- 85% smaller, 75% lighter than standard VSAT antennas, with dynamic, gyro-stabilised tracking
- Up to 512Kbps for ship-to-shore transmissions
- Up to 2Mbps for shore-to-ship downloads
- Military-grade modem - outstanding performance

KVH TRACPHONE FB150

Global Communications

The TracPhone FB150 antenna is the smallest in KVH's family of Inmarsat FleetBroadband-compatible TracPhone systems, perfect for leisure boats. The fully stabilised TracPhone FB150 offers IP data connections up to 150 Kbps and simultaneous voice and SMS service, all via Inmarsat's trusted FleetBroadband network with its new I-4 satellite constellation ensuring service for the next 20 years and beyond!

Enjoy access to weather data, sea conditions, chart updates, friends, family, and the office. For the first time, broadband at sea is small enough and affordable enough for you to rely on wherever you cruise.



Low cost airtime packages and affordable hardware/airtime bundles are available - call us for details now!

KEY FEATURES

- Designed for the harsh marine environment
- Always-available 150 Kbps data connection with outstanding quality voice and text messaging
- Rugged, compact antenna is reliable, simple to install, and easy to integrate with your computer or phone network
- Global coverage via Inmarsat's I-4 network

KVH TRACVISION M2

"At Anchor" Satellite TV System

A great choice if you want to watch Satellite TV while at anchor or at the dock, offering the highest signal strength available for "at-anchor" systems. The high-efficiency antenna features Ring Fire™ technology, which offers reception and signal gain previously only available in 18in diameter systems! Enjoy KVH's award-winning quality and reliability at an affordable price with this fully automatic system.



HOT PRODUCT

KEY FEATURES

- Height 45cm, diameter 40cm
- Ideal for use on boats as small as 25 feet
- Fully automatic satellite acquisition and satellite
- Ultra-quiet motors, no cable wrap, single-cable install, user-friendly onscreen set-up and control

SUPPLIED WITH

15m Antenna cable. Requires a digibox or satellite decoder (eg Sky box)

KVH TRACVISION M3DX

Compact Satellite TV System

If you thought your boat was too small for satellite TV then think again! This fully stabilised mobile satellite television antenna system is ideal for boats as small as 25ft! The ultra-compact 37cm antenna weighs only 8.6kg and gives crystal-clear reception and coverage comparable to the larger satellite TV antennas.



KEY FEATURES

- Great offshore coverage
- Fast, powerful, ultra-quiet motors
- Fully automatic satellite acquisition
- Single LNB - simple single cable installation
- Voltage 9-16V DC, power consumption 50W
- Height 45cm, diameter 40cm

SUPPLIED WITH

15m Antenna cable. Requires a digibox or satellite decoder (eg Sky box)

KVH TRACVISION M5, M7SK & M9

HDTV Satellite TV Systems

Enjoy HD programming from any leading provider with automatic satellite switching directly from the remote control! Unsurpassed High-Performance DVB® tracking.



KEY FEATURES

- **Tracvision M5** - 45cm system ideal for 40-60ft boats, weight 13.6Kg, power consumption 50W
- **Tracvision M7SK** - 60cm system ideal for 60-80ft boats, weight 25Kg, power consumption 55W
- **Tracvision M9** - 82cm system with integral Gyro/GPS and Remote Service Modem ideal for 80ft+ boats, weight 38.5Kg, power consumption 120W
- RingFire technology gives 30% greater reception and range than other comparably sized systems
- Superior offshore performance
- M5 & M7SK - optional GyroTrac gyrocompass upgrade
- Supports multiple TVs and receivers



Intellian Satellite Communication & Satellite TV

Intellian®

Experience the Innovation

Intellian is a company with better ideas. Built upon innovation and a commitment to design excellence, Intellian has consistently led with breakthrough technologies that provide the marine industry with superior performance and exceptional results.

Intellian is the global leader in maritime satellite communication antenna systems. Intellian offers a full line of VSAT communications and satellite TVRO antennas for recreational boats and commercial, oil and gas, deep sea and military.

Proven Leadership in Marine Satellite Antenna Technology

State of the Art Technology

- The most advanced up to date technology and design on the market.
- Exceptional value and superior performance backed with 3 year warranty.
- Relying on BDT [Dynamic Beam Tilt] that responds more quickly, quietly and tracks more consistently.
- Intellian's exclusive Wide Range [WRS] algorithm will allow the dish to search over a wider range and lock on to a signal in seconds.
- High speed TV signal identification.
- Designed and manufactured to function flawlessly in the harshest of marine environments, assuming reliability and performance.



Intellian®
Experience the Innovation

Intellian Satellite Communication & Satellite TV

SATELLITE TV ON YOUR BOAT FROM £1,999 INC VAT

From 25 ft leisure boats through to superyacht, commercial and military, Intellian has a solution for you. www.intelliantech.com

- All Intellian Satellite TV Systems come complete with 20m of high quality RF cable, a link cable to connect to your Freesat or Sky box and plenty of power cable.
- All Intellian TV Antenna Systems can be expanded to operate with multiple televisions to provide the user with total control and flexibility.



INTELLIAN i2

33cm Satellite TV Antenna System

- Compact size for smaller vessels, perfect fit for boats as small as 25ft.
- Proven performance for UK TV - Freesat/Sky - whole of the UK, Netherlands to La Rochelle.
- With just a single cable to connect the antenna and the ACU [Antenna Control Unit], quick and easy to install.
- The ACU is designed to require a minimum of set-up so you can begin to enjoy watching TV programs aboard your boat in no time.
- At sea operation in fair conditions and coastal.

HOT PRODUCT



INTELLIAN i3

37cm Satellite TV Antenna System

- Compact size for leisure boats sailing further from the UK.
- Full at sea operation in just about all conditions.
- Slightly larger dish size gives better performance when there may be slight obstruction from other vessels, mast etc when in a Marina.
- Built in GPS for easier operation and faster signal acquisition.
- High signal gain improves performance and operational area.
- User friendly interface allows for easy installation and operation

SEEN IT FOR LESS?
 [Price comparison icons]



INTELLIAN i4

45cm Satellite TV Antenna System

- The market's most popular system for proven performance and reliability
- For leisure, fishing boats, workboats, wind farm support and coastguard vessels
- Professional at sea performance where operators expect up to 7 days uninterrupted viewing in all conditions.
- Compatible with a variety of worldwide service providers.

EXPERT ADVICE



INTELLIAN i6PE & i6W

60cm Satellite TV Antenna System

- Best-selling system.
- Recognised for its commercial-grade build and exceptionally strong signal gain
- Low elevation capabilities for severe pitch and roll and high northerly latitudes.
- Auto skew LNB for signal optimisation over wide geographical range.



Intellian Satellite Communication & Satellite TV



INTELLIAN T-Series/W-Series TVRO Antennas Stabilised TV Antenna System

Global satellite TV service reception with Intellian's exclusive WorldView™ LNB module.

T-SERIES OVERVIEW

- 3 Axis stabilised marine satellite TV antenna
- Delivering hands-free satellite reception without the need to manually change the LNB component inside the radome each time the vessel crosses into a different satellite service region.

**HOT
PRODUCT**



t80W/t110W/t130W/i6W/i9W

- Outstanding coverage range that outperforms other systems in its class.
- Easy installation with fewer cables and proven reliability.
- Pre-programmed global satellite library – allows boaters to select the desired satellite while travelling from region to region anywhere in the world.
- Groundbreaking 3-axis marine stabilised design with wide elevation range [t-Series].

INTELLIAN VSAT Communication Antennas Ku-Band/Ka-Band VSAT Antenna System

- Exceptional value and superior RF performance.
- Intellian global PLL LNB is fully programmable to receive the full range of operating frequencies from any VSAT satellite service around the globe.
- Subjected to rigorous electronic and environmental tests during design and manufacture to assure reliability and performance.
- 90% of top 10 satellite service providers recommend and install Intellian VSAT communication systems as part of their comprehensive equipment.
- Established 400 contracted dealers and distributors around Europe, America, Asia and Middle East with a worldwide support network.
- Aptus software is compatible with all Intellian VSAT antennas allowing the user and integrator to monitor the system and performance data in real time from Apple or other Android product.

**HOT
PRODUCT**



PRICES CHANGE DAILY
VISIT OUR WEBSITES FOR THE LATEST DEALS

www.mesltd.co.uk
Call +44 (0)1179 114 111



Icom Handheld VHF Radios & AIS

Icom IC-M91D

Buoyant Handheld DSC VHF Radio with GPS

The world's first active noise cancelling handheld with built-in DSC and GPS. The IC-M91D features Icom's new soft-key user interface and advanced safety features including internal GPS, Class D DSC, and built-in compass and navigation functions.

KEY FEATURES

- Active Noise Cancelling Technology reduces background noise by up to 90%
- High definition dot matrix display
- Icom Marine Family User Interface provides simple operation
- Waypoint/compass function
- "Float'n Flash" - the LCD, keypad and distress button will flash when IC-M91D comes into contact with water
- 700mW Loud Internal Speaker
- Aquaquake draining function provides clear audio
- Optional Speaker Microphone
- Waterproof construction equivalent to IPX7 (1m depth for 30 minutes)
- 3 Year Warranty



Icom MA-500TR

Class B AIS Transponder

Designed for non-SOLAS vessels such as pleasure craft and fishing boats, the MA-500TR AIS transponder not only receives information from AIS vessels within range, it also transmits your vessel's information as well, so you will be seen by other vessels. It features a full dot-matrix display and visually shows real-time vessel traffic information.

The MA-500TR can operate as a stand alone unit or it can be connected via NMEA to a PC or compatible chartplotters, radars etc allowing AIS data to be overlaid in real time onto chart and radar displays. It can also be integrated with the Icom IC-M505 and IC-M603 fixed VHF radios which allows you to send DSC individual calls to a selected vessel instantly without the need to manually enter the vessel's MMSI number (requires firmware upgrade).



KEY FEATURES

- Dual channel receive capability
- 3 lines of NMEA0183 Input/Output
- IPX7 waterproof protection - 1 metre depth for 30 minutes
- Features collision-risk management functions including CPA (Closest Point of Approach), TCPA (Time to CPA), Target list and dangerous list and collision alarm
- External alarm connection

SUPPLIED WITH

Comes complete with the MXG-5000 GPS

Icom IC-M23

Compact Buoyant Handheld VHF Radio

At just under 13cm in height, the IC-M23 is one of the smallest and lightest buoyant handhelds on the market and can match the audio and battery performance of comparable models. The IC-M23 features a bright internal red LED at the bottom of the radio automatically which starts flashing when the radio detects contact with water, a useful feature should you accidentally drop the radio. Another useful feature is that the DC charging jack is protected with a watertight rubber cap which should keep the charging points of the radio free from corrosion for years to come.

KEY FEATURES

- "Float'n Flash" LED
- Can deliver 5W RF / 600mW AF for 10 hours at 5-5-90 operation
- Aqua Quake draining function blows water away from the speaker grille
- Rugged submersible body (1m depth for 30 minutes, equivalent to IPx7)
- Easy to read LCD with large channel indication
- Instant access to Ch 16 or Ch 37A (M1).



Icom IC-M35

Buoyant Handheld VHF Radio

Imagine a radio smart enough to adjust its volume level to account for the surrounding noise level. Icom's IC-M35 buoyant VHF marine handheld does just that with its Clear Voice Boost technology. This measures the ambient sound pressure level so that during a sudden burst of noise the IC-M35 not only automatically adjusts the volume but also the transmit level as well so your conversation is sent and received as clearly as possible no matter how noisy the background is. The inbuilt noise cancelling microphone further enhances the audio quality.

KEY FEATURES

- 6W output power
- Buoyant and waterproof to IPX7
- Clear Voice Boost override button
- Up to 8 hours use on a single charge
- Optional waterproof speaker microphone



SUPPLIED WITH

Li-Ion battery pack, charger, belt clip and lanyard

Icom IC-M73 PLUS

Handheld VHF Radio

The IC-M73PLUS builds on many of the features that made the IC-M71 the choice of many maritime professionals across the globe but also incorporates two new important features; a new voice recording function and Icom's Active Noise Cancelling Technology.

KEY FEATURES

- Last Call Voice Recording - up to 1 minute of your last received call is automatically saved
- Bass Boost Function (on both TX & RX)
- 700mW Loud Audio, 6W RF Output Power
- IPX8 Advanced Waterproofing
- AquaQuake™ water draining function
- Vox function for hands free operation
- Up to 18 hours battery life on a 5-5-90 duty cycle



Icom MXA-5000

Dual Channel AIS Receiver

This black box dual channel AIS receiver allows boat owners to receive AIS info (both Class A and Class B signals) on two channels simultaneously and output the information onto compatible PCs, combi displays, chartplotters or radars, aiding navigation and collision avoidance.



KEY FEATURES

- Data input port for multiplexing GPS and AIS data
- AIS data output via NMEA0183
- Full Class A and B duplex receiver
- Inbuilt antenna splitter

Icom Fixed VHF & SSB Radios

Icom IC-M323

Fixed DSC VHF Radio

The entry-level IC-M323 VHF/DSC transceiver brings exceptional features at a entry level price. It features the Icom Marine Family User Interface with intuitive "soft-keys" permitting faster access to radio functions. A rotary selector and directional keypad provides intuitive operation..

When connected to an external GPS receiver, current position and time are shown on the display. When receiving DSC information from another vessel, the IC-M323 can transfer it to a navigational device via NMEA 0183 connectivity.

KEY FEATURES

- Waterproof to IPX7
- AquaQuake™ water draining function
- MarineCommander™ compatible
- Black and super white versions available
- Can be integrated with MA-500TR Class B AIS Transponder

SUPPLIED WITH

Fistmic, power cable



Icom IC-M423

Fixed DSC VHF Radio

Icom's Next Generation compact fixed VHF with high definition dot matrix display. The Icom Marine Family User Interface provides simple operation. Rotary selector and directional keypad provide intuitive operation. Compatible with the Icom MA-500TR AIS Transponder for one-touch DSC individual calls. Three year warranty.



KEY FEATURES

- Active Noise Cancelling Technology reduces background noise by up to 90%
- 10W Loud Audio, Public Address and Fog Horn
- Optional HM-195 Commandmic
- Compatible with MA-500TR AIS Transponder for one-touch AIS Target Call
- Aquaquake draining function provides clear audio
- Waterproof construction equivalent to IPX7 (1m depth for 30 minutes)

SUPPLIED WITH

Fistmic, power cable

Icom IC-M400BB

Black Box DSC VHF Radio

The IC-M400BB's black box configuration allows the transceiver unit to be fitted out of sight, with all function control including DSC operation made from the HM-195B COMMANDMIC™ supplied. The IC-400BB uses the Icom Marine Family User Interface for simple, intuitive operation.

Connect the optional MA-500TR Class B AIS transponder and the AIS target call function allows you to set up an individual DSC call from the MA-500TR.

KEY FEATURES

- MarineCommander™ compatible
- AquaQuake™ water draining function
- IPX7 waterproof protection
- Inbuilt 10W amplifier increases audio output from external speaker
- Public Address and Foghorn functions

SUPPLIED WITH

Black box transceiver, HM-105B Commandmic, power cable



HOT PRODUCT

Icom HM-195B COMMANDMIC

Full Function Remote Fistmic

The HM-195 COMMANDMIC allows you to use the IC-M423 from a separate cabin or tower up to 18.3m (60ft) away from the IC-M423.

All functions of the IC-M423, including power switch, distress call, DSC, and PA functions can be controlled from the COMMANDMIC. The COMMANDMIC can also be used as an intercom with the IC-M423.

KEY FEATURES

- IPX7 Submersible Protection
- Class D DSC full control capability
- DSC "Distress" button on the back of the unit
- Large 45mm speaker for superior audio
- Black and white versions available.



Icom IC-M506

Fixed DSC VHF Radio with AIS

The IC-M506 is packed full of features including inbuilt AIS receiver, NMEA2000 connectivity, 'Last Call' voice recording function, 'Active Noise Cancelling' technology plus Icom's new intuitive menu-driven user interface and large dot matrix display making it really easy to use. When connected to an external hailer horn, you can talk to people on the deck or shore and can hear people's reply via the hailer speaker. Horn and RX hailer functions are also available.

NEW FOR 2014



KEY FEATURES

- Inbuilt AIS Receiver
- NMEA 2000™ Connectivity
- Last Call Voice Recording
- Active Noise Cancelling
- Intuitive User Interface
- Optional COMMANDMIC™
- IPX8 Waterproofing
- 25W Two-Way Hailer

SUPPLIED WITH

Fistmic, power cable

Icom IC-M802

SSB Transceiver

Powerful SSB radio system meeting GMDSS Class A specifications, with inbuilt DSC facilities. The main transceiver unit can be installed out of sight, while operation is via a compact remote control panel with a large, easy to read display.

Two large bank and channel dials make channel selection fast and easy. 1355 ITU channels, up to 16 banks of user channels, 17 banks of ITU channels - each with up to 20 channels per bank Inbuilt modem for email and data services. NMEA in for GPS, RS-232C port for PC input. Integrate the remote control with the IC-M603 or IC-M505 VHF radio to form a complete MF/HF/VHF communications station.



KEY FEATURES

- Digital signal processor
- 125W (PEP) output
- VFO mode option
- Wide band receive coverage (0.5 – 29.9999MHz)
- Headphone jack, RS-232C/NMEA input, GPS input, printer output and D-SUB connector for NBDP/FSK terminal
- Available with telephone handset or fistmic
- IC-M801GMDSS meets MED96/98/EC wheelmark requirements for SOLAS
- Icom M802 for non-UK vessels also available



PRICES CHANGE DAILY
VISIT OUR WEBSITES FOR THE LATEST DEALS

www.mesltd.co.uk

Call +44 (0)1179 114 111



Standard Horizon Handheld VHF & Chartplotters

STANDARD HORIZON HX280E

Waterproof Handheld VHF Radio

Compact, rugged submersible handheld with all International, USA and Canadian channels and a highly legible LCD display with automatic backlight. The preset key allows you to recall the 10 most frequently used channels.

KEY FEATURES

- 16hr duty cycle from 1650mAh Li-Ion battery
- Dual Watch
- Battery charge level indicator



SUPPLIED WITH

1650mAh Li-Ion battery pack, belt clip

STANDARD HORIZON HX290E

Waterproof Floating Handheld VHF Radio

An affordable floating handheld radio with speaker microphone socket and large easy to read display.

KEY FEATURES

- Submersible JIS-8 / IPX8 (3.3 feet for 30 mins)
- 1 and 5 Watt transmit power output
- Glow-In-the-Dark strip
- Huge channel display
- Key lock
- Optional speaker microphone or headset capable
- All USA, International and Canadian Marine Channels
- Programmable Scan, Priority Scan and Dual Watch
- Preset key used to recall up to 10 favorite channels
- NOAA Weather channels and Weather Alert
- Optional FBA-40 Alkaline battery tray available



SUPPLIED WITH

Li-Ion battery, belt clip, AC charger, cradle with charging indication, wrist strap

STANDARD HORIZON HX300E

Waterproof Handheld VHF Radio

The world's first handheld with a USB charging port. The compact, ergonomic case is a result of the new ultra small, large capacity 1650 mAh 3.7V Li-Ion battery. The intuitive menu system allows easy access to all of the setup functions of the radio, making it easy to customise settings.

KEY FEATURES

- Floats & submersible IPX8
- 5 Watt transmit power
- Water activated LED light
- 600 mW loud internal speaker audio



SUPPLIED WITH

1560 mAh 3.7V Li-Ion Battery, AC USB Plug and charging cable

STANDARD HORIZON HX851E

Waterproof Handheld VHF Radio

6W handheld with inbuilt 12 channel GPS, DSC, waypoint navigation, compass display and a glow-in-the-dark gasket.

KEY FEATURES

- Floats and is submersible JIS7/IPX7
- Waypoint entry (200 waypoints)
- Navigate to DSC Position Request call
- Large easy to read LCD with full dot matrix display
- Ergonomic design with rubber armor for non-slip grip
- DSC functions: Distress call with position, All ships, Urgency, Safety, Individual call, Position Request, Position Report and Group call
- Programmable Scan, Priority Scan and Dual Watch
- NMEA output (via cradle): DSC, DSE, GLL, RMC, GSA, GSV and GGA
- Water activated SOS Strobe light



SUPPLIED WITH

1380mA Li-Ion Battery, Charger, Mains Adaptor, Belt Clip

STANDARD CPN700i & CPN1010i

7in & 10in Chartplotter and Chart Sounder

Colour chartplotters with built-in Wi-Fi®, internet browser, Windows Media Player and USB memory stick input. Stream music or video and listen through the chartplotter's front panel speakers. AIS and FF525 Fishfinder compatible.

KEY FEATURES

- CPN700i - 7in 800x480 sunlight viewable bonded touchscreen
- CPN1010i - 10in XGA 1024x600 sunlight viewable bonded touchscreen
- Internal 50 channel WAAS GPS with external antenna connection
- Displays DSC Distress and Position report calls received from a DSC VHF
- 1 (CPN700i) or 2 (CPN1010i) NTSC/PAL Video inputs with Picture in Picture
- Dual chart display with independent zoom levels
- VGA Video output (CPN1010i)
- Dual station networking capability
- Optional C-Map 4D cartography



SUPPLIED WITH

Swivel mount bracket, flush mount



STANDARD CP180 & CPF180

5in Chartplotter and Chart Sounder

Available as a chartplotter or a combination chart sounder with inbuilt 600W dual frequency fishfinder, both models are radar and AIS ready.

KEY FEATURES

- CP180 - colour chartplotter
- CPF180 - inbuilt 600W 50/200kHz fishfinder
- External or internal 50 channel GPS antenna
- 2nm worldwide basemap
- 1 NMEA input and 2 outputs
- Dual chart window with independent zoom
- VHF DSC polling capability
- Route Check alerts to hazards long the way



SUPPLIED WITH

Swivel mount bracket, flush mount (external antenna versions only)



STANDARD CP300 & CPF300

7in Widescreen Chartplotter and Chart Sounder

All the features of the CP180 and CPF180 with a 800x480 widescreen display and 6 customisable quick keys.

KEY FEATURES

- CP300 - colour chartplotter
- CPF300 - inbuilt 600W 50/200kHz fishfinder
- 5 NMEA outputs, 2 NMEA inputs, video input



SUPPLIED WITH

Swivel mount bracket, flush mount (external antenna versions only)

STANDARD HORIZON CP500

12in Chartplotter

All the features of the CP300 with a large 800x600 TFT sunlight viewable display and an alphanumeric keypad.

KEY FEATURES

- 5 NMEA outputs
- 2 NMEA inputs
- 2 video inputs
- VGA output



SUPPLIED WITH

50 channel GPS, mounting bracket, flush mount kit



PRICES CHANGE DAILY
VISIT OUR WEBSITES FOR THE LATEST DEALS

www.mesltd.co.uk

Call +44 (0)1179 114 111



Shakespeare Antennas & Accessories

V-Tronix Antennas and Fittings

This is just a small sample of the full range of Shakespeare's range of antennas and accessories. Contact us for advice and full details.

YHK Hawk

Stainless Steel Whip & Hawk Wind Indicator

- Low windage
- 20m cable
- Solderless connection
- PL259 plug



YWX Whipflex

Stainless Steel Whip

- Low windage
- 20m cable
- Solderless connection
- PL259 plug



HA156c & HA156C-AIS

Stub Antennas

- Low windage for racing yachts
- Helical construction
- 20m cable
- PL259 plug
- No groundplane required



YRR & YRR-W Raider

RIB Antenna

- Specially designed for rigid inflatable boats
- Short helical design to avoid snagging
- Solderless connection
- 8m cable
- PL259 plug



427-N Kit (MD 10S)

1.5m GRP Antenna with polycarbonate ferrule

- Ideal for smaller power boats & workboats
- 6m cable, PL259 plug
- Complete with white nylon Ratchet Mount



427-S (RV120)

1.5m GRP Antenna with stainless steel ferrule

- Ideal for smaller power boats & workboats
- 6m cable
- PL259 plug
- Stainless steel ferrule



427-N (RV120-P)

1.5m GRP Antenna with polycarb ferrule

- 3dB antenna.
- Ideal for smaller power boats & workboats
- 6m of RG58 cable plus PL259 connector



4186 (ARMNT-P)

Ratchet Mount, Nylon

- Four-way swivel mount
- Deck or side mount
- Quick release lever
- UV resistant
- Suitable for antennas less than 2.4m



4187 (ARMNT)

Ratchet Mount, Stainless Steel

- Four-way swivel mount
- Deck or side mount
- Quick release lever
- UV resistant



4190 (ARMRM-S)

Ratchet Rail Mount, Stainless Steel

- For 22mm & 25mm vertical/horizontal rails
- Quick release lever



4721 (ARMRM-P)

Ratchet Rail Mount, Nylon

- For 22mm & 25mm vertical/horizontal rails
- Complete with rubber gasket
- Quick release lever



4720 (ARM-S)

Economy Rail Mount, S/Steel

- For 22mm & 25mm round or square rails
- Vertical or horizontal fit
- Can be mounted on flat surfaces
- Complete with nylon adaptor



4722 (ARM-P)

Fixed Rail Mount, Nylon

- For 22mm & 25mm rails
- Complete with adaptor, rubber gasket & hexagonal key
- Can also be mounted on flat surfaces
- Complete with nylon adaptors



4365 (ALDHM)

Fixed Base Mount, Stainless Steel

- 100mm high, 75mm dia. base
- Ideal for fitting to radar arches
- Excellent for GPS & marine TV antennas



4711 (ALDHM-P)

Flange Mount, Nylon

- 25mm high, 70mm dia. base
- Suitable for moderate duty operations



5216

Whip Antenna

- Specially built for sports boats
- Super lightweight
- Black stainless steel
- Gold-plated connector
- Black "L" bracket included for mast mounting



5911 STOWAWAY

Emergency VHF Antenna

- 25.5cm whip antenna
- Weather-resistant plastic tube
- 3.6m cable, SO239 connector
- Rubber suction cup
- Velcro straps included



5187

Quick Release Ratchet Mount

- Stainless Steel
- 4 way swivel.
- 5° adjustment.
- Sleek design



5218

Magnetic Whip Antenna

- 48 cm black stainless steel
- VHF whip antenna.
- Magnetic mount - quick detach
- 4.5m RG58 cable with PL259 connector



WS200-P

Extension Loudspeaker

- Surface or flush mount
- Weatherproof, UV resistant
- Suitable for 4 or 8 ohm systems



ACC105

Deck Plug & Socket

- For RG58 cable
- With N-type connector, shroud & s/steel screws
- With 2 protection caps



PV3i

DC-DC Converter

- Converts 24v-12v
- 3/6 amp
- Isolated Switchmode



MD23 & MD23-AIS

Helical VHF Antenna

- 0.31m helical antenna
- Robust VHF antenna ideal for RIBs and Sports boats operating in tough conditions



5250 SKINNY MINI™

0.9m Stainless Steel Whip

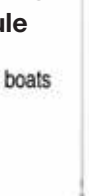
- Ideal for vessels with limited space
- 4.5m RG58 cable, PL-259 connector
- Standard 1"x14 thread
- Requires mount with centre hole for cable
- Suggested mounts: 4187, 5187, 4188-S, or 4190 Mounts



5101-S (RV-240)

2.4m GRP Antenna with stainless steel ferrule

- 6dB antenna.
- Ideal for power and work boats
- 1" x 14 TPI thread
- 6m RG58 cable with PL259 connector



Remember...
A Radio Is Only As Good As Its Antenna!
 No matter what you pay for a radio, its performance will be directly proportional to the quality and performance capabilities of the antenna. Don't compromise - insist on Shakespeare's V-Tronix range!

T&T/Thuraya/Iridium Satcoms

Thrane & Thrane Sailor FleetBroadband 150 & 250 Voice & Broadband Internet Access

Sailor 150 FleetBroadband features a small and light antenna, which enables simple user-installation, so smaller vessels with a requirement for reliable, high quality global internet and voice can enter the broadband era with a true IP solution.

The Sailor 250 FleetBroadband harnesses the flexibility of Inmarsat's latest I-4 satellite technology. It offers budget conscious fishing vessels, workboats and private yachts the opportunity to enter the broadband arena whilst providing the reliability and functionality expected of systems for large commercial vessels.

The same benefits are available for private yachts. Users can be confident that the rugged and reliable design engineered for professional use means it will take everything from a Mediterranean cruise to an Ocean crossing in its stride.

KEY FEATURES

- Data rate - 150kbps (150), 284kbps (250)
- Antenna diameter less than 30cm
- Weight - 3.9kg (150), 5kg (250)
- Competitively priced hardware and airtime
- Voice and data simultaneously
- IP connection for e-mail, internet & intranet access
- LAN interface
- IP Handset interface



EXPERT
ADVICE

INMARSAT iSatphone Pro Handheld Satellite Phone

The first global handheld from Inmarsat - the world's most reliable satellite communications network. The iSatphone Pro offers clear voice quality and is easy to use with an intuitive GSM-style interface and a high-visibility colour screen. The larger keypad makes it easy operate even when wearing gloves. It is also the only satellite phone that currently supports Bluetooth.

It also offers highly competitive handset, accessory and airtime pricing.

HOT
PRODUCT

KEY FEATURES

- Dust, splash and shock resistant
- Voicemail, text and email
- Call history, caller ID
- Call waiting, call divert, call holding and barring
- Conference calling
- Speed dialling
- GPS location data
- Up to 8 hours talk time
- Up to 100 hours standby time



Thuraya XT Handheld Satellite Phone

Splash resistant, dust protected, and shockproof, the Thuraya XT is one of the most rugged handsets, combining satellite phone functionality with the technology of the Thuraya network.

GmPRS capability means you can tether the phone to your laptop or PC to receive emails and browse the web from anywhere.

KEY FEATURES

- Rugged design with an IP54/IK03 rating
- Internet-on-the-go
- Weighs only 193g
- Compact - measures only 128 x 53 x 26.5mm
- Download speed - 60kbps
- Upload speed - 15kbps
- Fax and data @ 9.6kbps



Iridium 9555 & 9575 Handheld Satellite Phones

The 9555 is a compact, light and easy to use handheld Iridium phone with SMS and email capabilities and an upgraded mini-USB data port. Water and shock-resistant, it is engineered to perform in demanding and industrial environments. For really demanding applications, the new 9575 Extreme model puts all the features of the 9555 in a ruggedised, military-grade designed handset and adds additional functionality such as GPS-enabled location-based services, online tracking and accessories to create instant Wi-Fi hotspots.

KEY FEATURES

- True global coverage
- Retractable antenna for compact carrying
- Illuminated, weather-resistant keypad
- Menu configurable in any of 21 languages
- Additional address book fields for phone numbers, email addresses and notes
- Programmable international codes for automatic dialling
- Built-in help function
- Integrated speakerphone
- Mini-USB data port
- Standby time up to 30 hours, talk time up to 4 hours
- 9575 Extreme - GPS-enabled location-based services
- 9575 Extreme - Online tracking
- 9575 Extreme - Accessories to create instant Wi-Fi hotspots
- 9575 Extreme - Certified S.E.N.D. by RTCM

HOT
PRODUCT



9555

9575 Extreme

Suitable for any size of vessel, comprises transceiver, intelligent handset and small marinised antenna. Ideal for crew calling use with pre-paid scratch cards.

KEY FEATURES

- True global coverage - voice and data
- Data rate 9.6kps when compressed
- Rugged construction, lightweight waterproof antenna
- Flexible installation - up to 50m between handset RJ11 port for secondary analogue telephone

SUPPLIED WITH

Transceiver, antenna, handset. Antenna cable sold separately (10, 15, 20 & 30m sizes)



SUPPLIED WITH

Battery, AC charger, DC car charger, holster, handsfree kit, external antenna



PRICES CHANGE DAILY
VISIT OUR WEBSITES FOR THE LATEST DEALS

www.mesltd.co.uk
Call +44 (0)1179 114 111



Scanstrut Marine Electronics Mounts & Accessories

Lifedge Waterproof iPhone 5/5S Case

Use every feature of your iPhone for navigation, photography and communication, safe in the knowledge that it's 100% waterproof and protected from the elements.

Available in a range of four different colours.



KEY FEATURES

- Ultra-compact case
- Shockproof
- 100% waterproof and dustproof to IP68.
- Abrasion resistant, highly sensitive touch screen protector
- Access all iPhone functions including in-case charging
- Exceptional sound transmission and call clarity.

NEW FOR 2014

Lifedge Waterproof iPad Case

Go anywhere - inshore, offshore, onboard, overboard. Integrate with your onboard systems. Retains full touchscreen and camera functionality.



KEY FEATURES

- 100% Waterproof. Shockproof
- Rated to IP67 - dust tight and waterproof to 1m
- Anti-glare screen for sunlight viewing
- Comfortable handstrap for ease of use
- Range of mounting accessories available

Scanstrut Mast Mounts

Mast Platforms

Scanstrut Mast Mounts are a popular choice for mounting radar or satcom antenna onto your yacht's mast, raising the antenna clear of any obstructions or interference.



RADAR
SATCOM
CAMERA

KEY FEATURES

- Universal Mounting: Attach to any mast with four swivel feet
- Strong Fixing: 12 point fixing using high quality monel rivets
- Safety wire kit independently attaches scanner to mast in case an accident damages the installation



Scanstrut Self-Levelling Radar Mount

Mast, Backstay or Pole Antenna Mount

TESTED BY YACHTING MONTHLY AND PROVEN TO GIVE PICTURE PERFECT RADAR PERFORMANCE.

Ensures radar stays level with the horizon at all times for optimum antenna performance. Hydraulic damping eliminates minor oscillations. Single GPS / VHF mounting accessory available.

MAST MOUNTED

- Reduced weight aloft, weighs only 3.4 kg

BACKSTAY MOUNTED

- Options to mount fore or aft of backstay
- Suitable for single and split backstays
- 2.6m aluminium mounting pole
- High strength universal base eliminates loading on backstay
- Deck, transom or chainplate mount

POLE MOUNTED

- 360° adjustable base enables installation on sloping transoms and level decks
- 2.5m mounting pole
- Option to install both satcom and radar on one pole mount



RADAR

Scanstrut SC100

Pole Mount

Available in Aluminium, Stainless Steel and Carbon. Complete kit with everything needed for quick and easy installation.

KEY FEATURES

- Two heights - 1.9m recommended for deck mounting and 2.5m recommended for transom mounting
- 360° adjustable base fits angled decks and sloping transoms
- Supplied with two support modules for maximum fore/aft support

ALSO AVAILABLE

- **SC2 Pole Mount** for larger radomes, open array antennas and satcoms, choice of 1m deck mounted and 3m or 4m through deck mounted versions

ACCESSORIES

Lifting Crane, 55W Halogen Deck Flood Light, Light & GPS/VHF Antenna Mounts



RADAR
SATCOM

Scanstrut Scanpod

Instrument Mounting Pods

For mounting chartplotters, radar displays, instruments and autopilot controls, manufactured from acrylic capped ABS plastic in high gloss white.

DISPLAYS
INSTRUMENTS

KEY FEATURES

- **Helm Pod Rail Mount** - To fit 1 standard instrument or 7in display
- **Helm Pod Arm Mount** - To fit 1 standard instrument or 7in display
- **Compact Scanpods** - To fit 7, 8 & 12in displays from Raymarine and Simrad

HELM PODS

- No drill fixing kit - unique clamping system provides universal fit to all pedestal rails 25mm - 33.7mm dia.
- Fits rail widths from 178mm (7in)

FLEX MOUNT SYSTEM ACCESSORY

- Tilt display forward / back and side to side for best viewing angle
- Clamp onto existing rail or steering binnacle - install Helm Pod as normal

MAST PODS

- Universal mounting system fits a wide range of mast sizes (76 - 223mm)
- Carbon Mast Pod - lightweight unit designed to fit 3 or 4 maxi instruments

DECK PODS

- Quick release lever to alter the angle of the screen quickly
- Adjustable base allows a range of movement and multiple mounting angles



Scanstrut Marine Electronics Mounts

Scanstrut Rok-Lok Electronics Mount

Multi position mount for small electronic devices onboard.

ADJUSTABLE DECK MOUNT

- "Set & forget" system ensures zero loss of clamping force over time
- Easily adjusted. Unlock, reposition, lock again

ADJUSTABLE RAIL MOUNT

- Fits to rails from 25.4mm to 33.7mm diameter

RAIL MOUNT

- Install instruments direct onto pushpit or pedestal rails.
- Fits rails from 25.4mm to 33.7mm dia.



DISPLAYS
INSTRUMENTS

Scanstrut Tapered Mast Antenna Mount

Combination mount for radar, lights, GPS / VHF antennas, cameras and searchlights, with each item positioned for maximum performance.

KEY FEATURES

- Removable wings for safe low cost shipping
- Hollow wings and stem allow hidden cabling
- Option to fit search light or camera
- Mount additional satcom



RADAR
SATCOM
GPS/VHF
LIGHTS
CAMERA

Scanstrut PowerTower Antenna Mount

Mount 2kW, 4kW radomes or small satcom antennas on the cabin roof, flybridge or radar arch, giving a clear view of the horizon for maximum antenna performance. Pre-fitted IP65 cable gland and watertight base seal.

COMPOSITE POWERTOWER

- Choice of 150 or 350mm heights
- 200mm² footprint
- 30° aft leaning profile

STAINLESS POWERTOWER

- Small footprint - 150mm² mounting footprint makes it ideal for use on narrow arches or RIB A-frames
- 150mm height
- 30° aft leaning profile

ALUMINIUM POWERTOWER

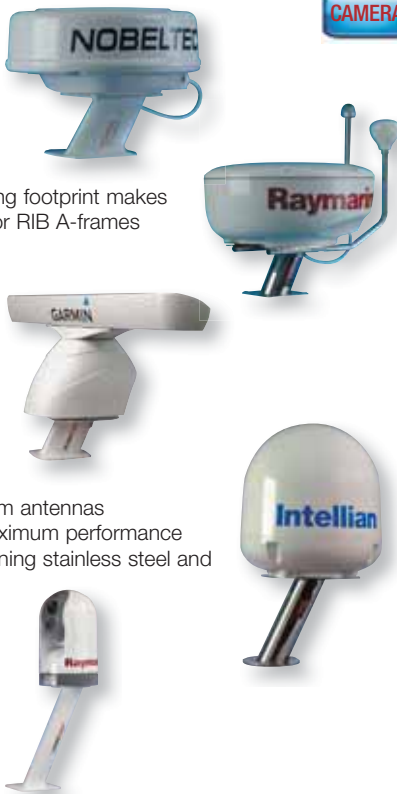
- Choice of 130 or 250mm heights
- 30° aft leaning (open array) or 25° forward lean (radomes) profiles
- 180mm² footprint

SATCOM POWERTOWER

- For 30cm, 40cm and 60cm satcom antennas
- Raises antenna by 300mm for maximum performance
- Two models available - 30° aft leaning stainless steel and vertical profile Aluminum

CAMERA POWERTOWER

- Choice of 150 or 300mm heights
- 30° aft leaning profile



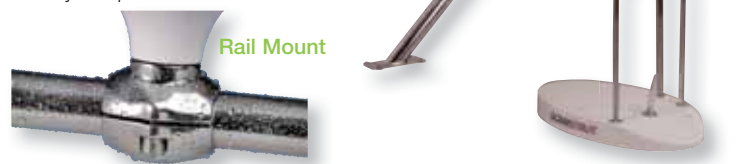
RADAR
SATCOM
CAMERA

Scanstrut T-Bar / T-Pole / Rail Mount Antenna Mounts

Cost effective mounts for up to 4 GPS / VHF antennas. Easy to install and ideal for both sail and powerboats.

KEY FEATURES

- **T-Pole** - 1.5m adjustable height, fits to flat or sloping surfaces
- **T-Bar** - Mount to upright stanchions, sloping transoms, cabin roofs
- **Rail Mount** - Mount to rails, standard 1in by 14 tpi thread



GPS/VHF

Scanstrut deck seal Waterproof Cable Routing

100% WATERPROOF - IPX6 & IPX7 tested and approved. Provides waterproof cable routing with options for 16mm to 40mm connectors. Supplied with both pre-drilled and blank inner seals

KEY FEATURES

- Aesthetic dome-shaped profile provides a stronger, impact-resistant design
- Split-seal option does not require connector removal during install
- Available in 30% Glass-filled Nylon or 316 stainless steel
- Long life stainless fastenings with captive nuts
- Tapered bung forms watertight seal

MULTI DECK SEAL

- Supplied with 1 blank seal
- Marine grade aluminium with hard anodised finish to resist impact marks



Scanstrut Dual PowerTower Antenna Mount

For radomes or open-array antenna and 30cm, 40cm or 60cm satcom antennas.

KEY FEATURES

- Installs satcom antenna above the radar - eliminates antenna interference, ensures maximum performance
- Accessory available - install additional lights



RADAR
SATCOM

Scanstrut Satcom Antenna Mount Satcom Dome Mounts

For 30cm, 40cm and 60cm satcom/tv antennas.

KEY FEATURES

- Reduce antenna footprint by up to 60%, providing greater choice of antenna position
- Watertight seal and gland systems



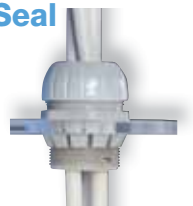
SATCOM

Scanstrut Through Bulkhead Cable Seal

Eliminate time consuming, sub-standard routing of cables through watertight bulkheads.

KEY FEATURES

- Access required from only one side of bulkhead
- Push cables through pierceable membrane
- Options for 4 x 15mm cables or 10 x 7mm cables



Scanstrut Junction Boxes

Secure, watertight connections for marine electrical cables anywhere on board.

KEY FEATURES

- 'Standard' 5 screw down terminals or 'deluxe' 10 fast fit terminals
- IP66 membrane guarantees waterproofing
- Upgrade to IP67 with seal upgrade kit



PRICES CHANGE DAILY
VISIT OUR WEBSITES FOR THE LATEST DEALS

www.mesltd.co.uk
Call +44 (0)1179 114 111



Fusion Entertainment Systems

Fusion MS-RA50 Marine Stereo

The MS-RA50 has a shallow mount depth of only 55mm, perfect for small boats and personal watercraft. It features iPod/iPhone music playback and Fusion's innovative easy to use True Marine music interface. With a maximum output of 80 watts, this 2 channel stereo is capable of powering a set of speakers.



KEY FEATURES

- Large 2.3in LCD display
- Total control of iPod music library through fully integrated iPod user interface
- Connect iPod/iPhone via optional cable or water resistant docking unit
- Left and Right AUX In, Left and Right line out connections
- Water resistant to IPx5

Fusion MS-RA205 Marine Stereo

The MS-RA205 features FUSION-Link NMEA 2000 connectivity. This fully featured compact marine stereo delivers powerful, clear and dynamic sound. Powered by the advanced ARM-9 Processor, the MS-RA205 offers quick and intuitive audio control. FUSION's iPod interface allows navigation of the iPod menu structure and offers selection of songs by artist, song, playlist, album, genre or composer. MTP (Media Transfer Protocol) allows you to connect your supported Windows/Android smartphone and access your entire music library.



KEY FEATURES

- Sources: AM, FM, VHF, USB, iPod/iPhone, MTP, Bluetooth (requires MS-BT100 or MS-BT200 sold separately), AUX
- FUSION-Link enabled, NMEA 2000 certified
- VHF Receiver
- iPod/iPhone video playback (with supported iPod models and MS-DKIPUSB Dock)
- Multi-Zone Technology

Fusion MS-IP600 Marine iPod Stereo

Features enhanced remote bus technology, an intelligent user memory, Fusion's Alpha Search Technology and extended Apple iPod support with fully integrated iPod user interface - your iPod sits inside the Stereo, completely protected from the harsh marine elements. The unique Fusion user interface is simple to navigate, scrolling through your iPod music library has never been easier.



KEY FEATURES

- World's first internal iPod dock
- Sources - AM/FM/iPod/AUX
- Dual mono subwoofer output
- 100% aluminium chassis
- Individual volume control in three locations onboard your vessel (requires additional amplification)
- Internal Class-D amplifier system will draw less power than a standard amplifier
- 360° IPx5 water resistant, withstands high humidity, salt air and water splashes



Fusion MS-IP700i Marine Entertainment System

The 700 Series True Marine Entertainment System is the culmination of Fusion's engineering and design brilliance, resulting in a product with superior sound quality, controls and features never seen before. Integrate and control your system via NMEA2000 and Ethernet with partnered marine multifunction displays and wirelessly control the on-board entertainment with the Fusion-Link Wireless Remote Control App for iPad, iPhone or Android. The MS-IP700i features an internal iPod/iPhone dock for iPhone 4S and earlier, an external USB connector for iPhone 5 and a marine grade remote network connector for added reliability and easy integration with a NMEA 2000 network.



**HOT
PRODUCT**

KEY FEATURES

- Intuitive and easy to use
- Internal iPod/iPhone dock
- External USB connector
- Marine VHF Receiver
- Innovative 4 zone control
- Sources - AM/FM/VHF/USB/AUX/ iPod/iPhone
- MTP (Media Transfer Protocol) audio support - access your Windows/Android smartphone's music library
- Bluetooth audio support via optional MS-BT200 or MS-BT100
- NMEA 2000 Certified
- IPx5 water resistant



Fusion UNI-Dock Universal Smartphone Dock

The revolutionary UNI-Dock supports the widest array of smart phones, media players and USB devices on the market.

Compatible with the MS-IP700i, MS-RA205 and others, the UNI-Dock allows users to enjoy on-the-water entertainment from an extensive range of Apple and supported MTP (Media Transfer Protocol) enabled Android and Windows smartphones.



**HOT
PRODUCT**

Fusion FM-402 Marine Amplifier

The 2 Channel 400 Watt (Peak) FM-402 will drive up to two subwoofers, an extra pair of speakers or even 4 speakers (2 speakers in parallel each channel at 2 Ohms).

KEY FEATURES

- FUTRANZ Heat Sink Technology transfers heat more efficiently and offers more thermal stability and maximum component reliability
- F.R.A.T Fusion Regulated Amplifier Technology outputs enormous power output at the lowest voltage
- F.I.S.T Fusion Intercooled Semi-Conductor Technology clams down internal power switching, rapidly removing heat from all associated semi-conductors



Fusion MS-FR4021/MS-FR6021/MS-FR7021 Marine Loudspeakers

- Waterproof to IP65
- High efficiency design reduces battery drain
- **MS-FR4021** - 4in 2-Way, 120W max power
- **MS-FR6021** - 6in 2-Way, 200W max power
- **MS-FR7021** - 7in 2-Way, 260W max power



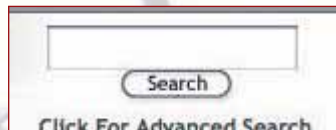
MES & Cactus Information

How We Do Business



GET THE LATEST PRICES ONLINE

- See our full product range on our website www.cactusnav.com or www.mesltd.co.uk
- Get up-to-the-minute prices and buy securely online
- See the very latest unbeatable megadeals
- Looking for a specific product? Use our online search function to find what you're looking for
- Seen it cheaper elsewhere? Try our **Price Match function** - we regularly check prices and are confident you can't buy better anywhere else!



PAYMENT

We accept the following methods of payment - cash, cheque and most credit and debit cards -



- Cactus will not charge your credit/debit card until the goods are shipped unless it is a highly specialised item, in which case we may ask for a small deposit at the time of order.



TRADE CUSTOMERS

We have a trade website which offers attractive trade terms for trade customers including Chandlers, Brokerages, Boat Builders, Marine Engineers, Yacht Charter, and Marine Electronics resellers.

To qualify you must be able to answer yes to the following questions:-

1. Do you run a business whose principle activity is in the marine sector?
2. Have you been established for at least 2 years?
3. Do you have a valid UK or EU VAT number?
4. Can you provide 2 marine trade references?

If the answer is yes to these simple questions just complete the online application form, once approved you can then create an account online and we can activate for trade terms.



INTERNET PARTNERS WANTED

If you want to set up a website dealing in marine electronics we want to hear for you, we can help with the design, technical aspects, and supply of products.

Please email andrew@cactusnav.com for details



SOME IMPORTANT ADVICE PLEASE READ

We work very hard to provide a high level of customer service and if you follow our simple advice we can ensure that your shopping experience with us is pleasant and stress free.

- Please allow a reasonable time for ordering and delivery - although we keep plenty of stock in our warehouse many marine electronics manufacturers find it difficult to predict demand, so delivery times can vary, particular during the season. We will always tell you if the product you are buying is about to change, so there is no need to leave ordering to the last minute.
- Buy PC software at least 2 weeks before you plan to use it. Loading and configuring marine software is generally not straightforward, often there are issues with unlock codes and drivers that can take a few days to resolve, plus you might need to order additional PC peripherals so everything functions correctly.
- Because of the number of PC operating systems, navigational applications, and electronic chart formats available, we are unable to provide telephone support for marine software. However, we provide a full in-house commissioning and setup service, please ask the sales team for details.
- When calling please give us plenty of information about your boat and how you intend to use the equipment, even if you are just phoning up for a price. This provides a useful check to ensure you are purchasing the right product for you.
- If you are ordering accessories or electronic charts, please check compatibility with us before ordering. Formats and specifications change all the time so it is worth double-checking even if you think you know what you need. This will avoid the trouble and expensive of returning items that were incorrectly ordered.
- If you have any comments or feedback on our service or the products please email me directly (andrew@cactusnav.com) and I will do my best to help.



PRICES CHANGE DAILY
VISIT OUR WEBSITES FOR THE LATEST DEALS

www.mesltd.co.uk
Call +44 (0)1179 114 111





Cactus Navigation & Communication Ltd

Tel: +44 (0)1752 548 845
Email: sales@cactusnav.com
Website: www.cactusnav.com



Marine Electronic Services Ltd

Tel: +44 (0)1179 114111
Email: sales@mesltd.co.uk
Website: www.mesltd.co.uk

Cactus 020 Ltd Head Office

PO Box 189
Bristol
BS20 1BJ
Tel +44 (0) 1752 548845

We Are Open:

Monday to Friday: 9.00am to 5.00pm



Cactus and mesltd.co.uk are Cactus020 Companies
Reg. No. 7844892

SIMRAD NSS evo2

WITH INBUILT 10Hz GPS/GLONASS RECEIVER,
HDMI OUTPUT & 4G RADAR COMPATIBILITY



NEW FOR 2014

KEEP YOUR IPHONE DRY

WE ALL LOVE THEM, BUT THEY DON'T LIKE GETTING WET! KEEP IT SAFE AT SEA WITH SCANSTRUT'S NEW LIFEDGE CASE!



NEW FOR 2014

HUMMINBIRD ONIX MFDs

RADICAL NEW DISPLAYS WITH ADVANCED NAVIGATION AND SONAR FEATURES



NEW FOR 2014

HYBRID DUAL IMAGING

NEW ELITE 5 HDI FROM LOWRANCE NOW COMBINES BROADBAND SOUNDER™ AND DOWNSCAN IMAGING TECHNOLOGY!



NEW FOR 2014

©2014 Cactus 020 Ltd

Created by Avalyn Design avalyn.co.uk

www.cactusnav.com

Call +44 (0)1752 548 845

www.mesltd.co.uk

Call +44 (0)1179 114 111

25 years experience • Free installation advice • We are there for you if you get a problem • Authorised dealer