

## **Appendix B: Environmental Baseline Maps**

See insert.

Statutory Designations - International Nature Conservation Sites

Statutory Designations - National Nature Conservation Sites

Habitat Types - Land Cover Map 2007

Multiple Deprivation Measure 2010





Water Quality - Rivers

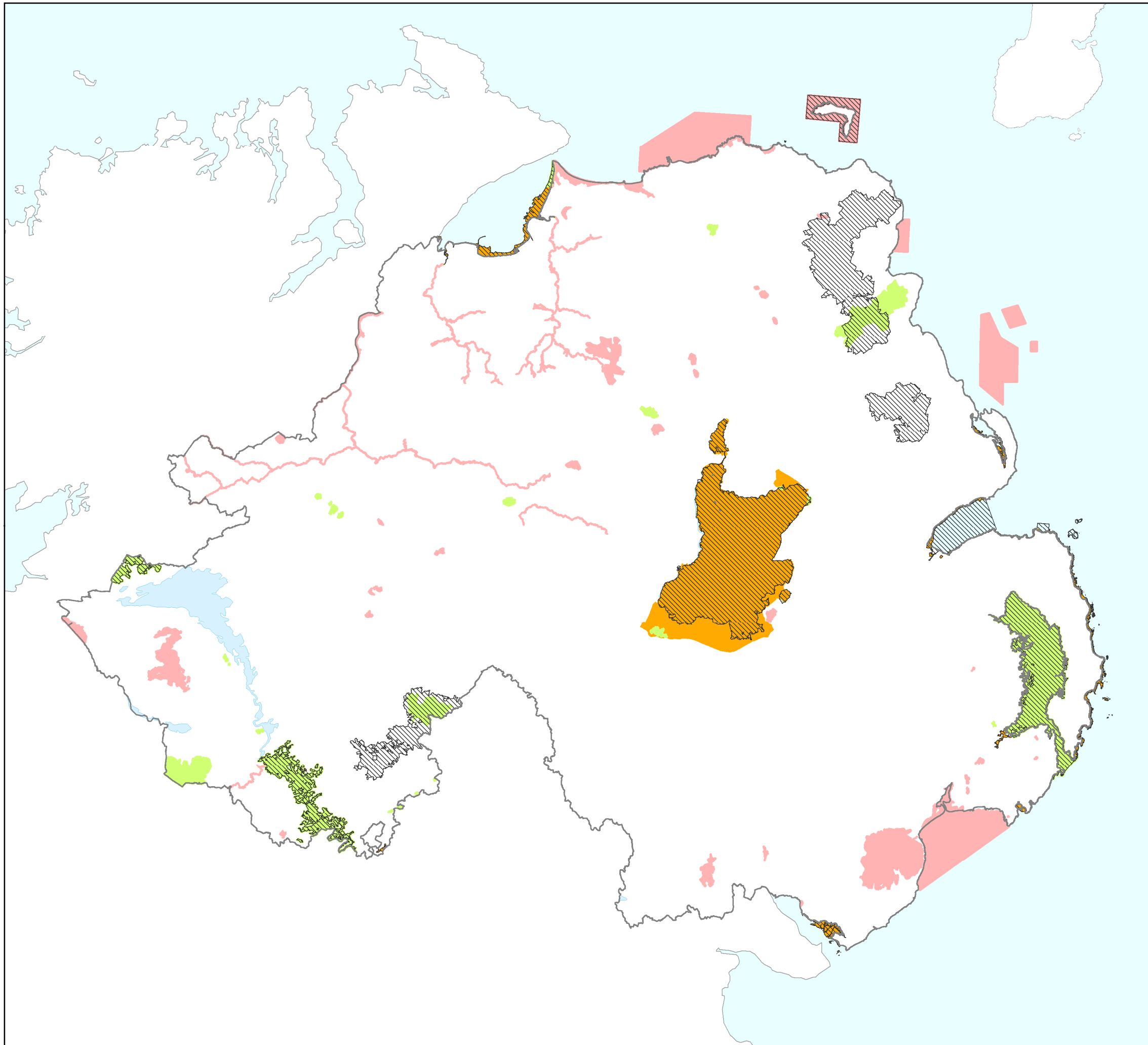
Statutory Designations - Landscape & Cultural Heritage Sites

Access and Sustainable Transport

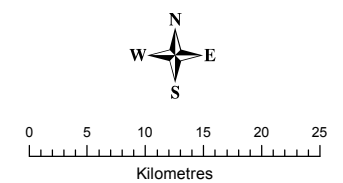
**SEA for the  
Strategic Planning Policy Statement**

**European / International Designations -  
Nature Conservation Sites**

-  SPA )
-  SAC ) Natura 2000 Sites
-  Ramsar
-  Ramsar & SAC



Drawn by P. Taylor 10/10/2013, Verified by H. Davies 10/10/2013



Scale 1:650,000 at A3 size

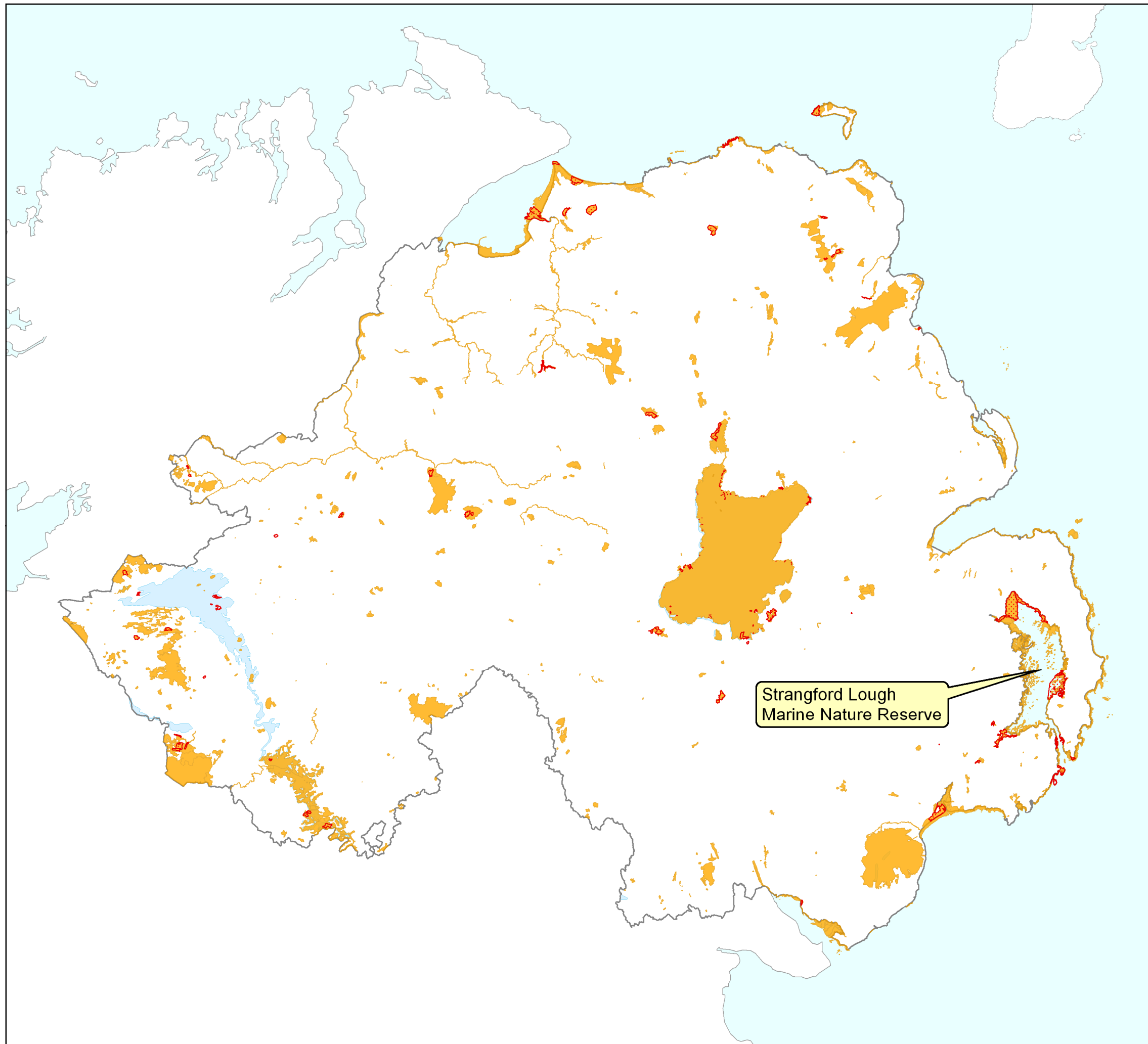
NMS – Dept of Arts, Heritage and the Gaeltacht. Copyright 2013.

This material is based upon Crown Copyright and is reproduced  
with the permission of Land & Property Services under delegated  
authority from the Controller of Her Majesty's Stationery Office,  
Crown copyright and database rights, EMOU206.2.  
Northern Ireland Environment Agency Copyright 2013.

# SEA for the Strategic Planning Policy Statement

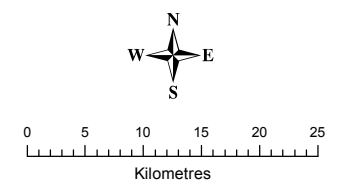
## National Designations - Nature Conservation Sites

- ASSI
- NNR



Strangford Lough  
Marine Nature Reserve

Drawn by P. Taylor 10/10/2013, Verified by H. Davies 10/10/2013



NMS – Dept of Arts, Heritage and the Gaeltacht. Copyright 2013.

This material is based upon Crown Copyright and is reproduced with the permission of Land & Property Services under delegated authority from the Controller of Her Majesty's Stationery Office, Crown copyright and database rights, EMOU206.2. Northern Ireland Environment Agency Copyright 2013.

ADAS Group Ltd, Pendeford House, Pendeford Business Park, Wobaston Road, Wolverhampton, WV9 5AP. Tel 01902 271300.

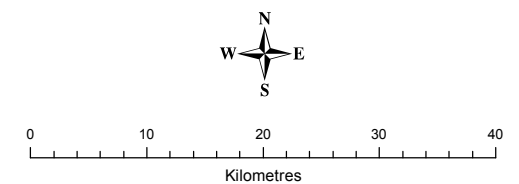


**SEA for the  
Strategic Planning Policy Statement**

**Habitat Types (Land Cover Map 2007)**

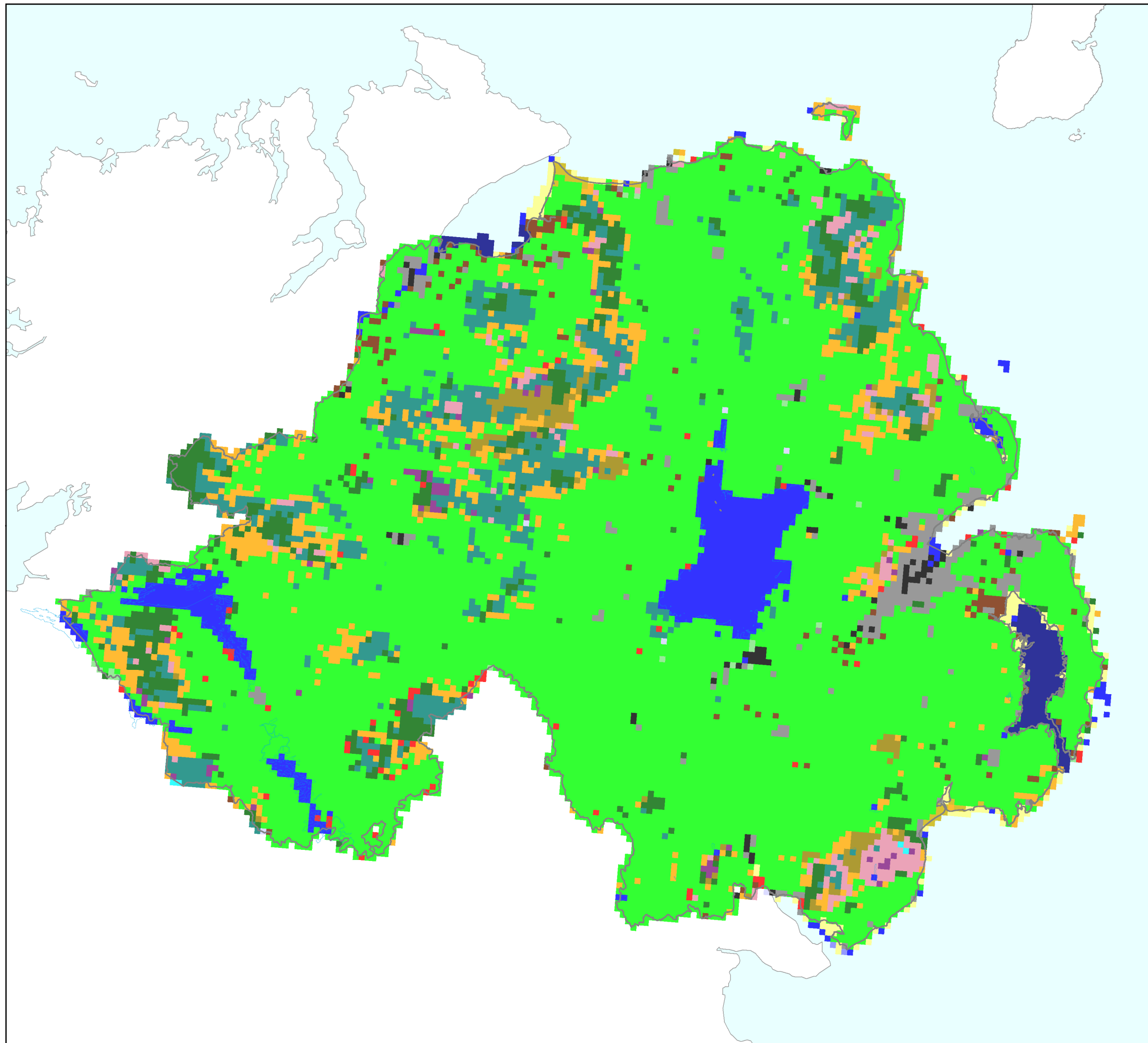
- Broadleaved Woodland
- Coniferous Woodland
- Arable and Horticulture
- Improved Grassland
- Rough grassland
- Neutral Grassland
- Calcareous Grassland
- Acid grassland
- Heather
- Heather Grassland
- Bog
- Montane Habitats
- Inland Rock
- Saltwater
- Freshwater
- Supra-littoral Rock or Sediment
- Littoral Rock or Sediment
- Saltmarsh
- Urban
- Suburban

Drawn by P. Taylor 09/10/2013, Verified by H. Davies 09/10/2013



Scale 1:650,000 at A3 size

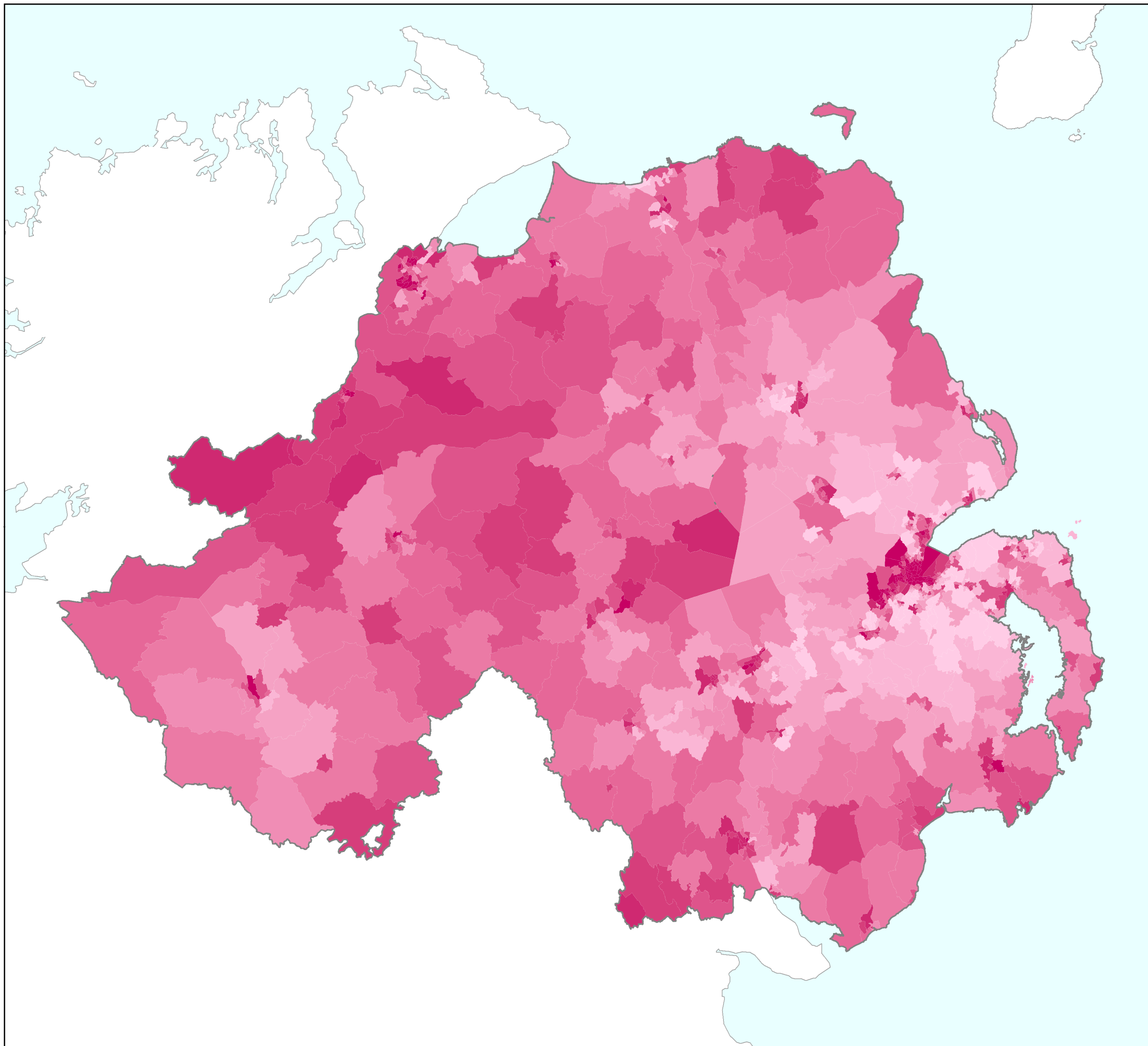
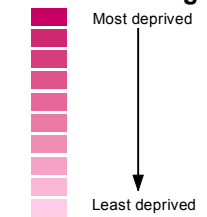
LCM2007 © and database right NERC (CEH) 2011.  
All rights reserved. Contains Ordnance Survey data  
© Crown copyright and database right 2007.



# SEA for the Strategic Planning Policy Statement

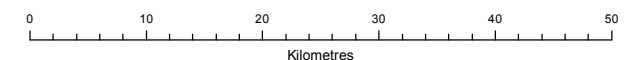
## Overall Deprivation Rankings for Northern Ireland

### Multiple Deprivation Measure (NI) 2010 Ranking (by Super Output Area)



Notes:  
1. NI data based on Northern Ireland Multiple Deprivation Measure 2010 data (most to least deprived areas by decile) for Super Output Areas.  
2. Data should be used for illustrative purposes only.

Drawn by Hayley Coristine 23/09/2013 Verified by Helen Davies 23/09/2013



Scale 1:650,000 at A3 size

This map is reproduced from Ordnance Survey material with the permission of Ordnance Survey on behalf of the Controller of Her Majesty's Stationery Office © Crown copyright. Unauthorised reproduction infringes Crown Copyright and may lead to prosecution or civil proceedings.  
ADAS Licence AL100020033 September 2013.  
For reference purposes only. No further copies may be made.







ADAS Group Ltd, Pendeford House, Pendeford Business Park,  
Wobaston Road, Wolverhampton, WV9 5AP. Tel 01902 271300.



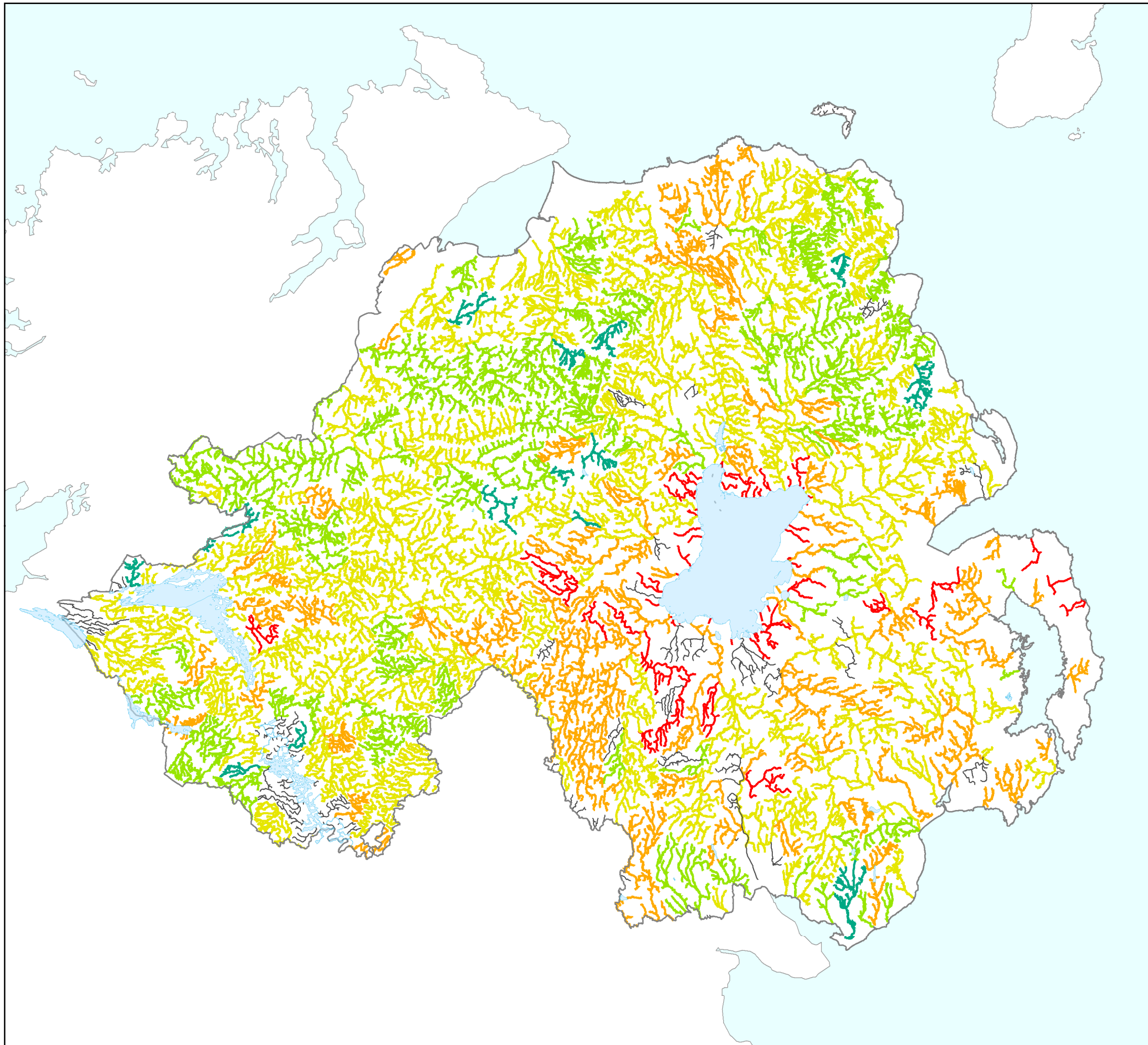
# SEA for the Strategic Planning Policy Statement

## Water Quality - Rivers

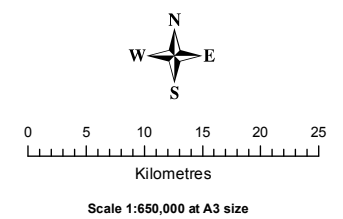
### Ecological Status

-  High
-  Good
-  Moderate
-  Poor
-  Bad
-  No status recorded

**NOTE:**  
Current ecological status is available for 84% of the river network. A further 6% is 2012 data and for approximately 10% no status is recorded.



Drawn by P. Taylor 20/09/2013, Verified by H. Davies 20/09/2013



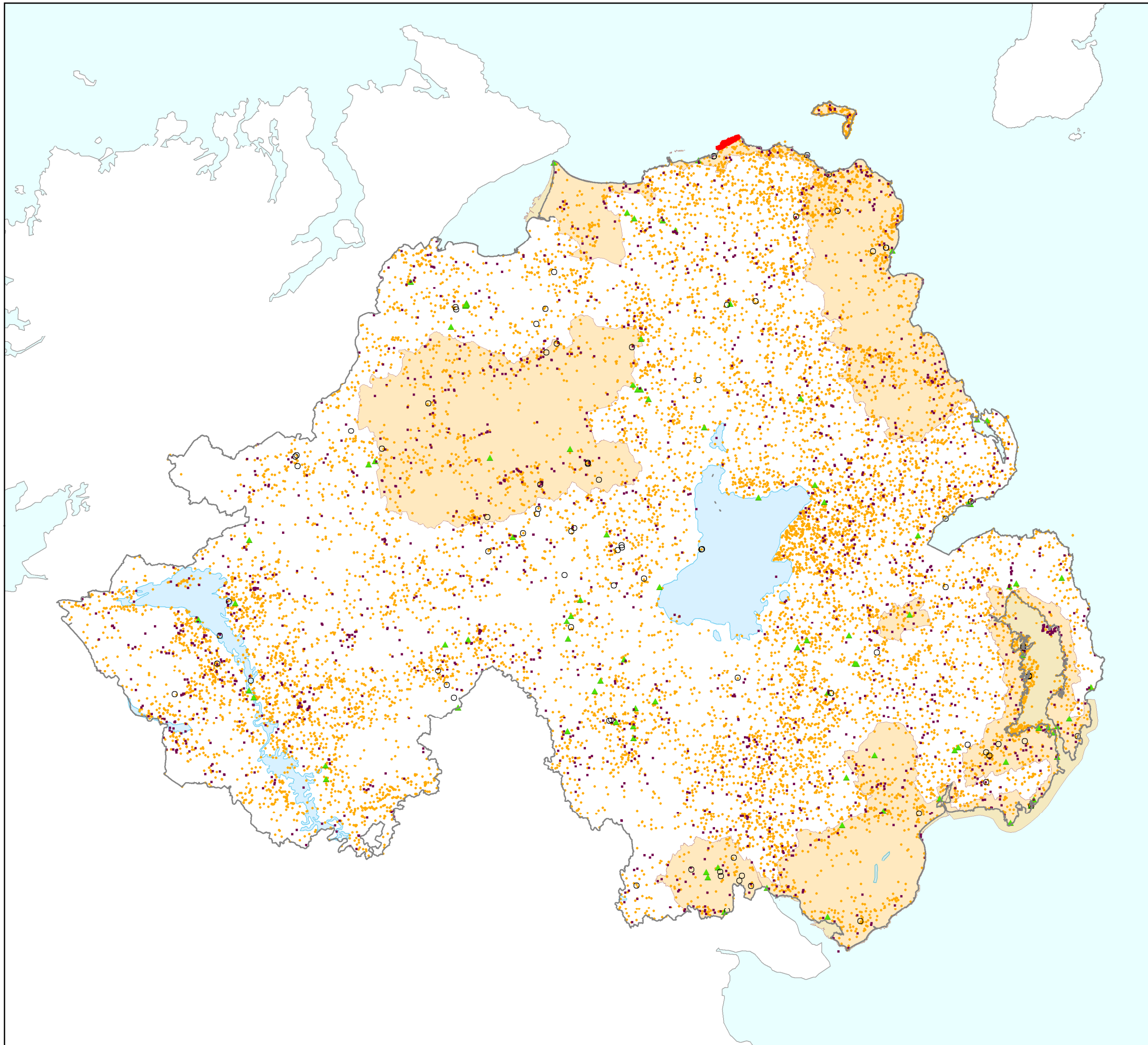
© Copyright Department of Agriculture and Rural Development 2013

# SEA for the Strategic Planning Policy Statement

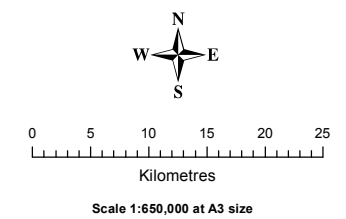
## Statutory Designations - Landscape & Cultural Heritage Sites

### Site & Monument Record (NI)

- Scheduled
  - ▲ State Care
  - State Care and Scheduled
  - Non-statutory
- AONB
- World Heritage Site



Drawn by P. Taylor 20/09/2013, Verified by H. Davies 20/09/2013



NMS – Dept of Arts, Heritage and the Gaeltacht. Copyright 2013.

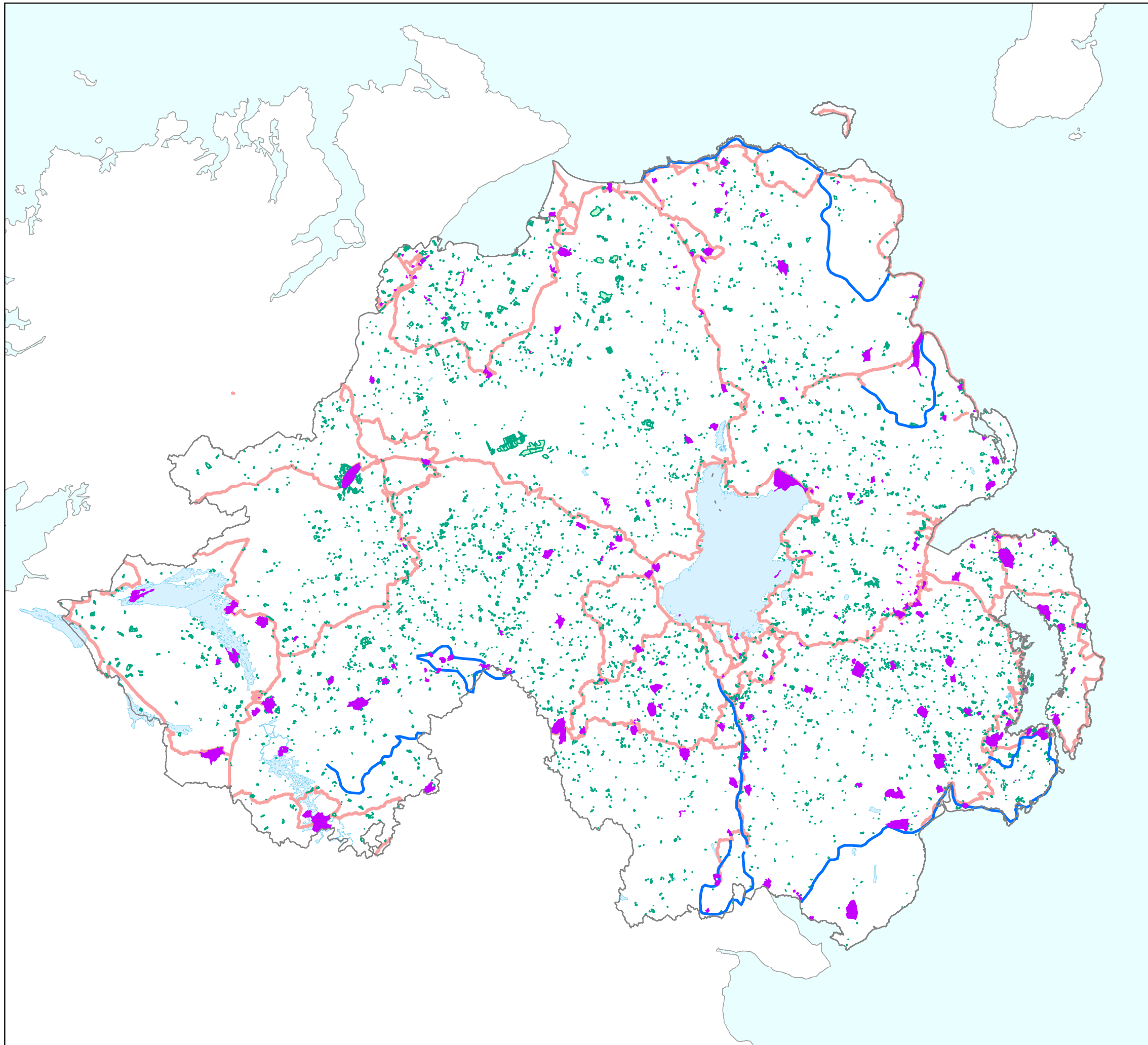
This material is based upon Crown Copyright and is reproduced with the permission of Land & Property Services under delegated authority from the Controller of Her Majesty's Stationery Office, Crown copyright and database rights, EMOU206.2, Northern Ireland Environment Agency Copyright 2013.





ADAS Group Ltd, Pendeford House, Pendeford Business Park, Wobaston Road, Wolverhampton, WV9 5AP. Tel 01902 271300.



# SEA for the Strategic Planning Policy Statement

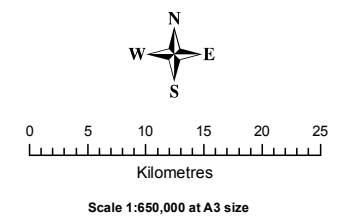
## Access and Sustainable Transport



-  National Waymarked Trails
-  National Cycle Network Routes
-  DARD Forestry Service Grant aided woodlands (1970 to 2013)  
Pedestrian access from March 17th 2013
-  NI Historic Parks & Gardens

**NOTE:**  
The majority of historic parks, gardens or demenses are in private ownership and may not be accessible to the public without seeking permission or paying an admission charge.

Drawn by P. Taylor 20/09/2013, Verified by H. Davies 20/09/2013



Gardens material is based upon Crown Copyright and is reproduced with the permission of Land & Property Services under delegated authority from the Controller of Her Majesty's Stationery Office, Crown copyright and database rights, EMOU206.2, Northern Ireland Environment Agency Copyright 2012.

NMS – Dept of Arts, Heritage and the Gaeltacht. Copyright 2013.

DARD Woodlands - Forest Service NI Copyright 2013

National Cycle Route data supplied by Sustrans  
© Sustrans and OpenStreetMap contributors

ADAS Group Ltd, Pendeford House, Pendeford Business Park,  
Wobaston Road, Wolverhampton, WV9 5AP. Tel 01902 271300.

