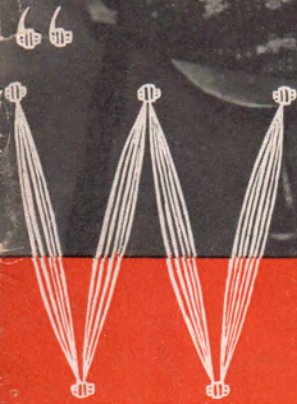


This file was downloaded from  
[http://www.knitting-and.com/butterfly/  
bucilla100.html](http://www.knitting-and.com/butterfly/bucilla100.html)

The watermark with pink text that appears at the bottom of the pages will not show when the file is printed.

This pdf document is copyrighted to Sarah Bradberry and **may not** be uploaded to any other website, “shared” via discussion list of any type, added to any “collection CD” (for the purpose of selling or free download) or sold. If you would like to tell people about this booklet you may link to it at <http://www.knitting-and.com/tatting/bucilla100.html>

<http://knitting-and.com>



A FASCINATING PASTIME

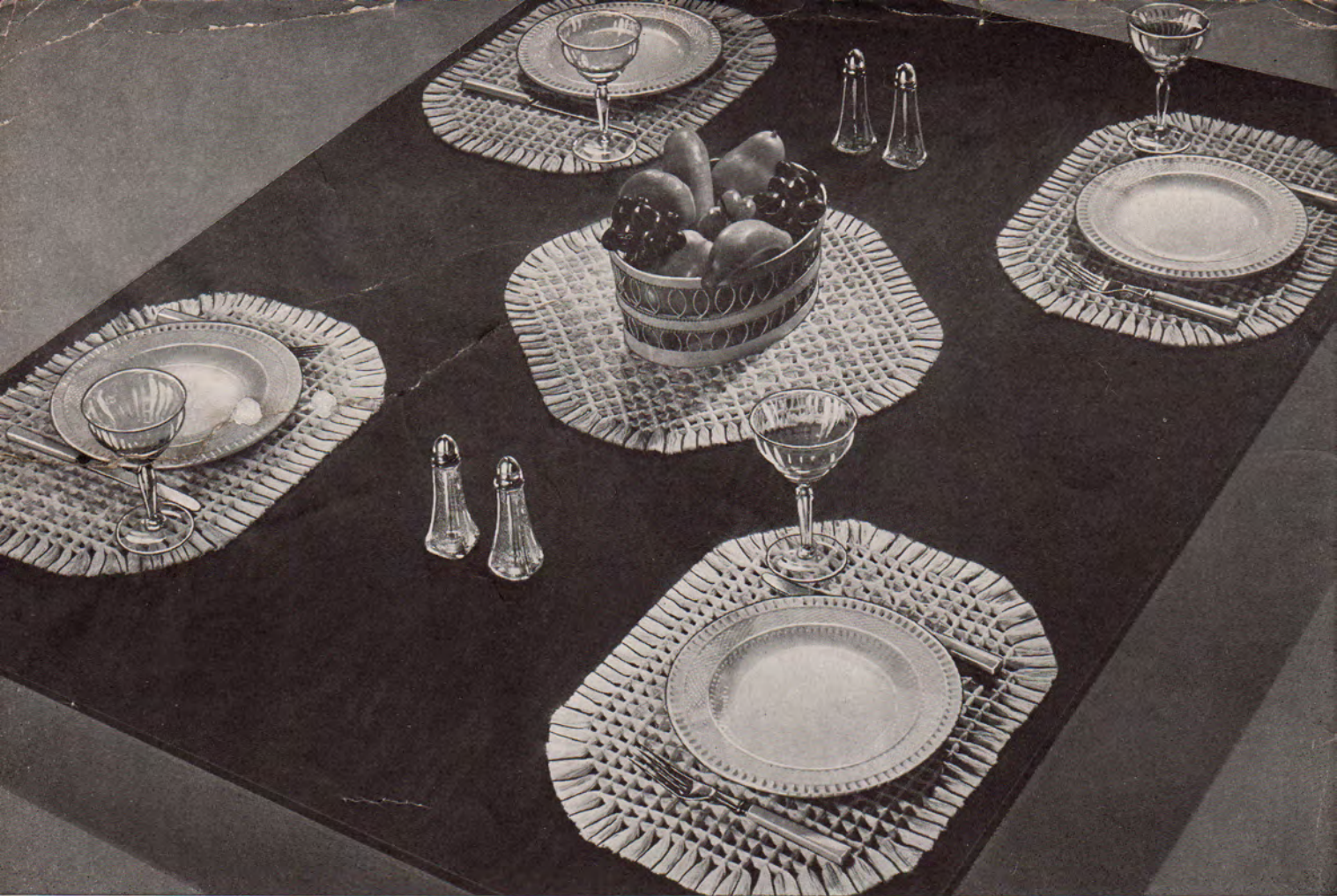
EASILY AND QUICKLY DONE WITH  
BUCILLA CROCHET AND KNITTING COTTON

<http://knitting-and.com>

VOLUME 100



(in U.S.A.)



## "Anne of Green Gables" Luncheon Set No. 3635

This lovely set was inspired by the new RKO Radio Picture featuring Anne Shirley and based on the famous novel by L. M. Montgomery.

**MATERIALS**—Bucilla Adjustable "Waffle-Weave" Frame (Patent Applied For) No. 4515.

Bucilla Tapestry Needle size 17, No. 3483 for tying and "Waffle-Weave" Needle No. 3478 for working diagonal weaving.

Bucilla Glossitwist Mercerized Crochet and Knitting Cotton, Article 3580, 14 balls White, 3 balls Green or

Bucilla Delustered Super Crochet and Knitting Cotton, Article 3458, 12 balls White, 2 balls Green.

**Centerpiece:** (13½-inches in diameter)—Set frame in an 18-inch square as follows: place the first bar on table in a horizontal position with screw at right hand end and teeth up, slip the screw at end of first bar in end hole of a second bar, screw wing nut in place, join the other 2 bars to form a complete square.

Tie a strand of white in 2nd notch at left side on upper bar, draw thread down to corresponding notch on lower bar, wind it around tooth, through next notch up to corresponding notch on upper bar. Continue this serpentine winding until 27 vertical strands have been laid (this will leave 1 blank notch at right hand side), pass thread under corner of frame, lay 27 horizontal strands. This completes the first ply. Wind the frame with 24 ply of white; break off.

Tie a strand of color (green) in same notch as 1st vertical strand, draw thread through corresponding notch on lower bar, skip 1 notch, draw thread through next notch (same notch as 3rd vertical strand) continue to wind frame, laying a strand of green over every other vertical strand on frame (14 vertical strands) pass thread under corner of frame, draw it through same notch as 1st horizontal strand, draw through corresponding notch on opposite bar; continue to lay a strand of green over every other horizontal strand on frame (14 horizontal strands). This completes 1 ply; wind the frame with 8 ply of green, break off. Tie white thread in same notch as 2nd vertical strand, lay a strand of white over each white strand, wind the frame with 8 ply of white, break off.

Before starting to sew straighten out the rows,

being careful to have the squares even and the green strands directly over the white strands below. Turn frame over, all the tying is done from wrong side.

Join white thread in 7th vertical strand from right hand side of frame (A on chart), tie a row of 15 knots (B on chart), tie a knot in intersection directly below last knot (C on chart), continue to tie knots at the intersections of cross threads following outline of centerpiece on chart. Continue to work tying a knot at each intersection marked with a circle or a slant line. Join thread under 5th knot in 3rd horizontal row (D on chart), draw thread diagonally downward to left, slip needle under next knot (E on chart), continue to draw thread under each knot until (F on chart) is reached, draw thread down straight, draw it under next knot (G on chart), continue to work diagonally to (H on chart), continue to work diagonal weaving until the diagonal threads have been laid in one direction (the diagonal weaving is worked only under the knots indicated by circles on chart), when all the threads have been laid in one direction, turn and recross in opposite direction.

Remove work from frame. Trim fringe to 1½-inches.

**Place Mats:** (10½-inches by 14-inches)—Set frame in a 15-inch by 18-inch oblong as follows: place the first bar on table in a horizontal position with teeth up, slip the screw at end of first bar in 6th hole (from screw end) of a second bar, screw wing nut in place, slip the screw at end of second bar in end hole of a third bar, slip the screw at end of third bar in 6th hole of a fourth bar, slip the screw at end of fourth bar in end hole of first bar.

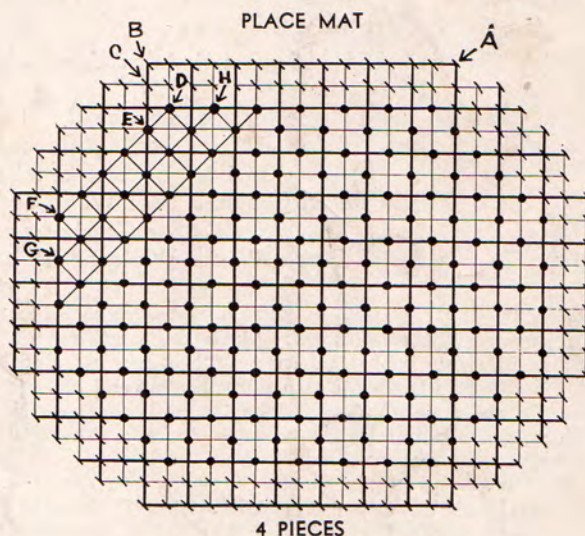
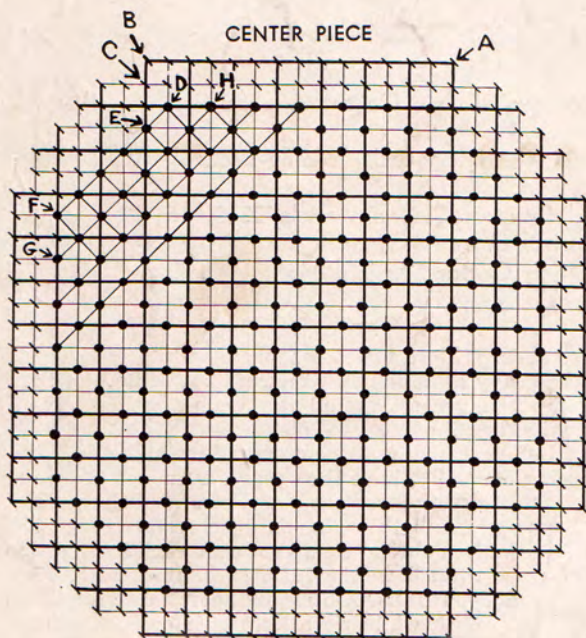
Wind the frame with 24 ply of white (there should be 27 vertical and 21 horizontal strands on frame), break off. Tie a strand of green in same notch as 1st vertical strand, draw thread through corresponding notch on lower bar, skip 1 notch, draw thread through next notch (same notch as 3rd vertical strand) continue to wind frame laying a strand of green over every other vertical strand on frame (14 vertical strands) pass thread under corner of frame, draw it through same notch as 1st horizontal strand, draw through corresponding notch on opposite bar, continue to lay a strand of green over every other horizontal strand on frame (11 horizontal strands). This completes 1 ply; wind the frame with 8 ply of green, break off. Tie white thread in same notch as 2nd vertical strand on frame, lay a strand of white over each white strand on frame, wind the frame with 8 ply of white, break off.

Join white thread in 7th vertical strand from right hand side of frame (A on chart), tie a row of 15 knots (B on chart), tie a knot in intersection directly below last knot (C on chart), continue to tie knots at the intersections of cross threads following outline of mat on chart. Continue to work, tying a knot at each intersection marked with a circle or a slant line. Join thread under 5th knot in 3rd horizontal row (D on chart) continue to work diagonal weaving same as on centerpiece.

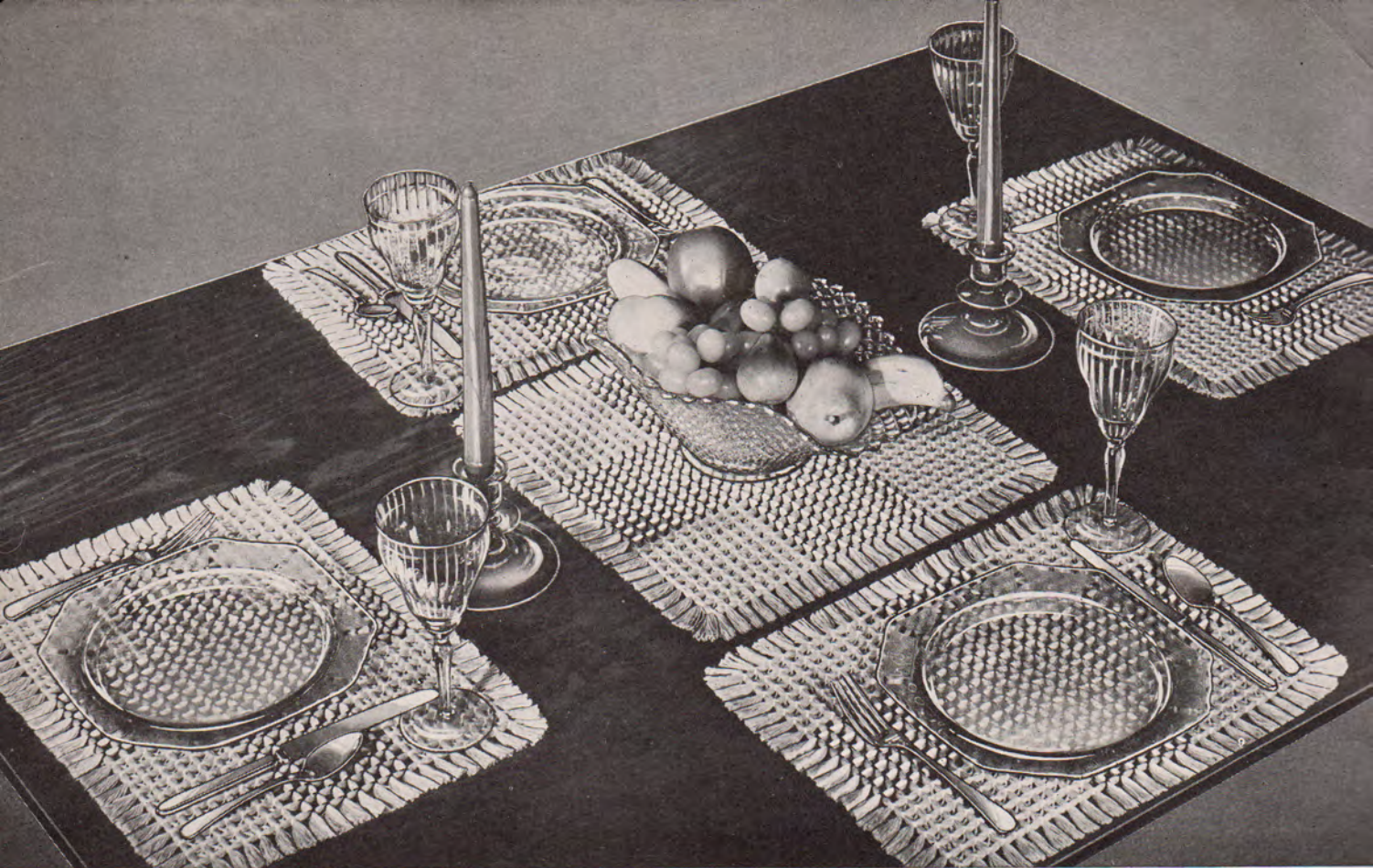
Remove work from frame. Trim fringe to 1½-inches.

Make 4 of these mats.

This set can also be made using Salmon Rose, Skipper Blue, Beige or Black as the contrasting color.



**IMPORTANT**—At the time you make your initial purchase of any colored cotton for the piece you intend to make, it is important that you buy the complete amount of each color necessary to finish the article, making sure that it is all of one dye lot number as the next lot number of any color may differ slightly in shade from the original lot you purchased and make it impossible to complete your article satisfactorily.



## Criss-Cross 5 Piece Luncheon Set No. 3632

**MATERIALS**—Bucilla Adjustable "Waffle-Weave" Frame (Patent Applied For) No. 4515.

Bucilla Tapestry Needle size 17, No. 3483 for tying and "Waffle-Weave" Needle No. 3478 for working diagonal weaving.

Bucilla Glossitwist Mercerized Crochet and Knitting Cotton, Article 3580, 15 balls Pastel Green, 3 balls White and 1 ball Black or

Bucilla Delustered Super Crochet and Knitting Cotton, Article 3458, 10 balls Pastel Green, 2 balls White and 1 ball Black.

*1 pastel green  
3 white  
1 black*

**Centerpiece:** (14-inch square)—Set frame in an 18-inch square as follows: place the first bar on table in a horizontal position with screw at right hand side and teeth up, slip the screw at end of first bar in end hole of a second bar, screw wing nut in place, join remaining 2 bars to form a complete square.

Tie a strand of main color (green) in 2nd notch at left side on upper bar, draw thread down to corresponding notch on lower bar, wind it around tooth, through next notch to corresponding notch on upper bar. Continue this serpentine winding until 27 vertical strands have been laid (this will leave 1 blank notch at right hand side) pass thread under corner of frame, lay 27 horizontal strands. This completes the first ply. Wind frame with 24 ply of green; break off. Tie a strand of white thread in same notch as 11th vertical strand, draw thread down to corresponding notch on lower bar, draw thread through notch, wind it around tooth and through next notch, continue serpentine winding until 7 white vertical strands have been laid, pass thread under corner of frame, draw thread through same notch as the 11th horizontal strand, lay 7 horizontal

strands. This completes 1 ply of white (see chart, the heavy lines on chart indicate the white, the light lines the green). Wind the frame with 8 ply of white, break off.

Before starting to sew straighten out the rows, being careful to have the squares even and the white strands directly over the green strands below. Turn frame over, all the tying is done from wrong side.

With black thread tie a knot over each intersection of cross threads in the 11th, 12th, 13th, 14th, 15th, 16th and 17th horizontal and vertical strands on frame. With white tie a knot over each remaining intersection. Join white thread under 2nd knot in 1st horizontal row on left side of frame (A on chart), draw thread diagonally across to 1st knot in 2nd horizontal row (B on chart), slip needle under knot, draw thread down to knot directly below (C on chart), slip needle under knot, work across to (D on chart), continue diagonal weaving until all the diagonal threads have been laid in one direction (see chart, the cross in a square indicates a cross of diagonal weaving), turn and recross in opposite direction. Work a group of diagonal weaving in each corner of square (see chart).

Remove work from frame. Trim fringe to 1½-inches.

**Place Mats:** (10½-inches x 14-inches)—Set frame in a 15-inch by 18-inch oblong as follows: place the first bar on table in a horizontal position with teeth up, slip the screw at end of first bar in 6th hole (from screw end) of a second bar, screw wing nut in place, slip the screw at end of second bar in end hole of a third bar, slip the screw at end of third bar in 6th hole of a fourth bar, slip the screw at end of fourth bar in end hole of first bar.

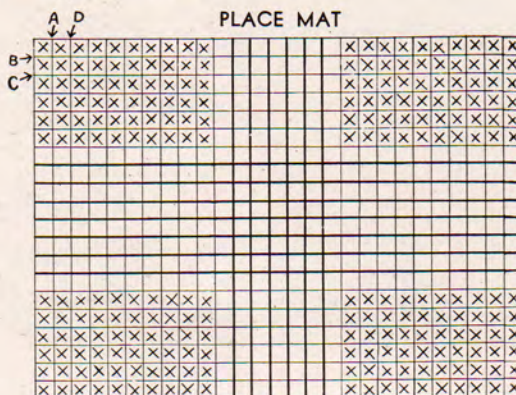
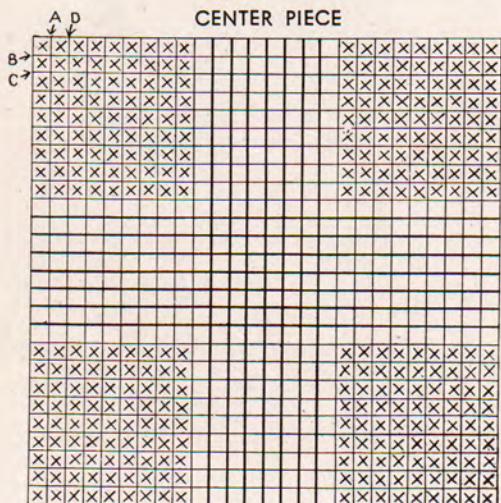
Wind the frame with 24 ply of green (there should be 28 vertical and 21 horizontal strands on frame), break off. Tie a strand of white thread in same

notch as 12th vertical strand, draw thread down to corresponding notch on lower bar, draw through notch, wind it around tooth and through next notch, continue serpentine winding until 6 white vertical strands have been laid, pass thread under corner of frame, draw through same notch as 8th horizontal strand, lay 7 horizontal strands. This completes 1 ply of white (see chart, the heavy lines on chart indicate white, the light lines the green). Wind the frame with 8 ply of white, break off.

With black thread tie a knot over each intersection of cross threads in the 12th to 17th vertical strands and in the 8th to 14th horizontal strands. Work the diagonal weaving in each corner of mat (same as on centerpiece).

Remove work from frame. Trim fringe to 1½-inches. Make 4 of these mats.

This set can also be made using any of the Pastel shades in place of Green.



4 PIECES

## Bulgarian Stripe 5 Piece Luncheon Set No. 3634

(Shown on back cover)

**MATERIALS**—Bucilla Adjustable "Waffle-Weave" Frame (Patent Applied For) No. 4515.

Bucilla Tapestry Needle size 17, No. 3483 for tying and "Waffle-Weave" Needle No. 3478 for working diagonal weaving.

Bucilla Glossitwist Mercerized Crochet and Knitting Cotton, Article 3580, 11 balls White, 1 ball each of Skipper Blue, Orange, Dark Green and Red or Bucilla Delustered Super Crochet and Knitting Cotton, Article 3458, 8 balls White, 1 ball each Skipper Blue, Orange, Dark Green and Red.

**Centerpiece:** (14-inch square)—Set frame in an 18-inch square as follows: place the first bar on table in a horizontal position with screw at right hand end and teeth up, slip the screw at end of first bar in end hole of a second bar, screw wing nut in place, join the remaining 2 bars to complete the square.

Wind the frame with 24 ply of white thread (there should be 28 vertical and 28 horizontal strands on frame); break off.

Cut 10 strands of red each 30-inches long, tie one end in same notch as 1st vertical strand, tie opposite end of strand in corresponding notch on lower bar, tie another group of red strands in the 9th, 17th and 25th vertical strand on frame (see chart; the heavy lines on chart indicate the strands of red), tie a group of green strands over the 2nd, 10th, 18th and 26th vertical strand (see chart, the dashed lines on chart indicate the strands of green); tie a group of orange strands over the 3rd, 11th, 19th and 27th strand on frame (see chart; the wavy lines

on chart indicate the strands of orange), tie a group of blue strands over the 4th, 12th, 20th and 28th vertical strands on frame (see chart; the dotted lines on chart indicate the strands of blue). Continue in same way to lay horizontal strands, following the chart for placing of colors.

Before starting to sew straighten out the rows being careful to have the squares even and the colored strands directly over the white strand below. Turn frame over, all the tying is done from wrong side.

Tie all the knots in white. Work the diagonal weaving in center of each white square (see chart; work a white cross of diagonal weave for each cross on chart).

Remove work from frame. Trim fringe to 1½-inches.

**Place Mats:** (10½-inches by 14-inches)—Set frame in a 15-inch by 18-inch oblong as follows: place the first bar on table in a horizontal position with teeth up, slip the screw at end of first bar, in 6th hole

*skipper blue*  
*blue*  
*orange*  
*3 dark green*  
*green*  
*red*  
*white*

(from screw end) of a second bar, screw wing nut in place, slip the screw at end of second bar in end hole of a third bar, slip the screw at end of third bar in 6th hole of a fourth bar, slip the screw at end of fourth bar in end hole of first bar.

Wind the frame with 24 ply of white thread (there should be 28 vertical and 20 horizontal strands on frame); break off. Cut 10 strands of red each 24 inches long, tie one end in same notch as 1st vertical strand, tie opposite end of strand in corresponding notch on lower bar, tie another group of red strands over the 9th, 17th and 25th vertical strand on frame

(see chart); tie a group of green over the 2nd, 10th, 18th and 26th vertical strand (see chart); tie a group of orange strands over the 3rd, 11th, 19th and 27th vertical strand on frame (see chart), tie a group of blue strands over the 4th, 12th, 20th and 28th vertical strand on frame (see chart).

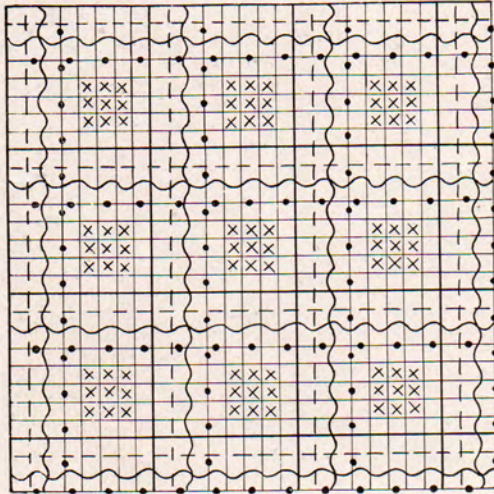
With white thread tie a knot at each intersection of cross threads. Work the diagonal weaving under white strips (see chart; work a white cross of diagonal weaving for each cross on chart).

Remove work from frame. Trim fringe to 1½-inches.

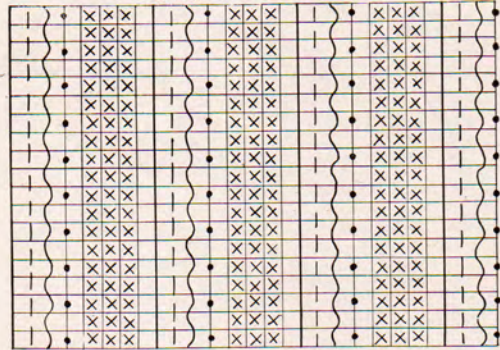
Make 4 place mats.

This set can also be made using Linen for the background color in place of White.

CENTER PIECE



PLACE MAT—4 PIECES



— = RED  
 - - - = GREEN  
 ~ ~ ~ = ORANGE  
 • • • = BLUE  
 ⊗ = CROSS OF DIAGONAL WEAVING

## Two - Tone 5 Piece Luncheon Set No. 3633

(Shown on Page 7)

**MATERIALS**—Bucilla Adjustable "Waffle-Weave" Frame (Patent Applied For) No. 4515.

Bucilla Tapestry Needle size 17, No. 3483.

Bucilla Glossitwist Mercerized Crochet and Knitting Cotton, Article 3580, 17 balls Pastel Blue, 3 balls Skipper Blue and 2 balls White or

Bucilla Delustered Super Crochet and Knitting Cotton, Article 3458, 12 balls Pastel Blue and 2 balls each of Skipper Blue and White.

**Centerpiece:** (14-inch square)—Set frame in an 18-inch square as follows: place the first bar on table in a horizontal position with screw at right hand side and teeth up, slip the screw at end of first bar in end hole of a second bar, screw wing nut in place, join the other 2 bars to form a complete square.

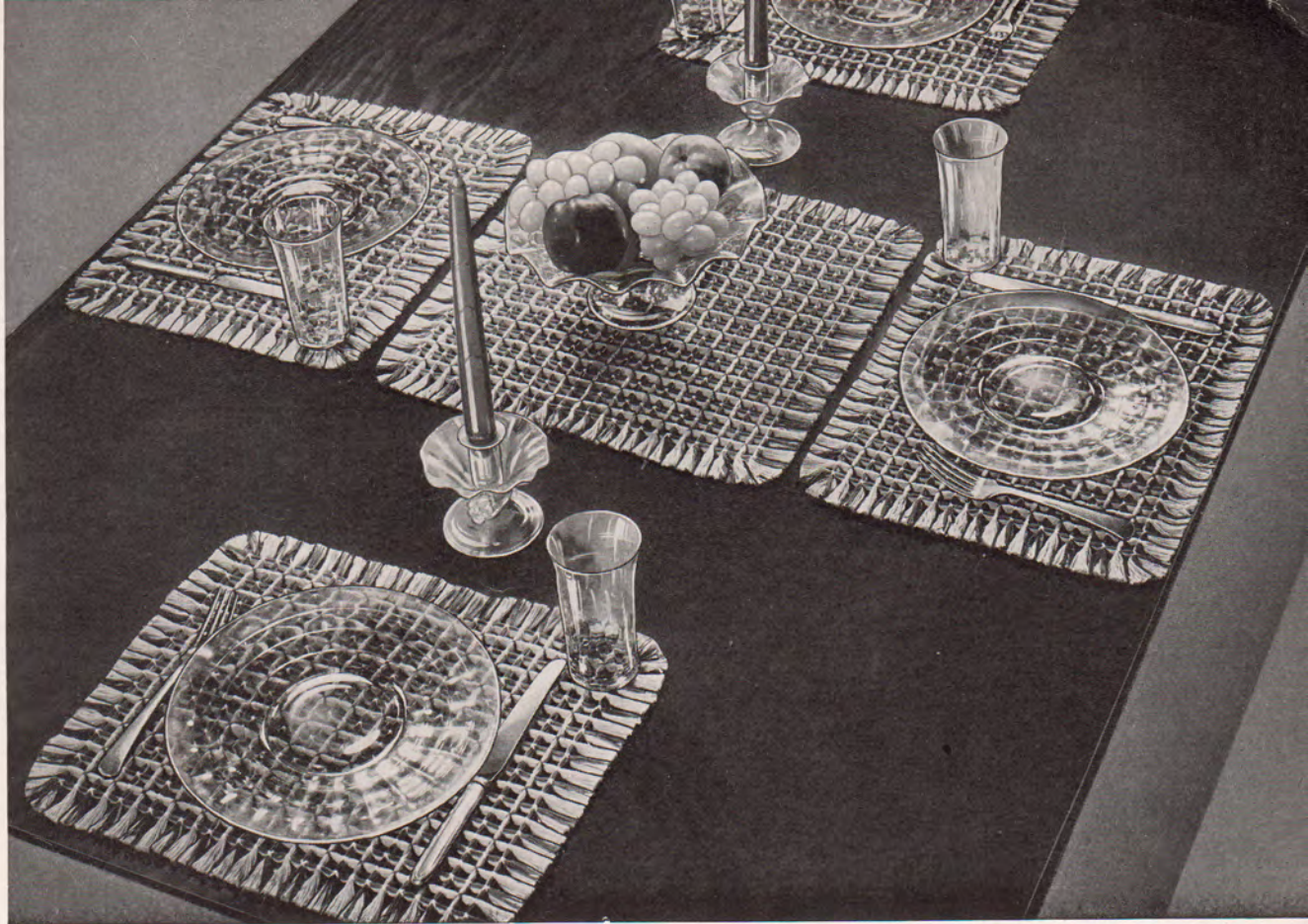
Tie a strand of the lighter shade (pastel blue thread) in 2nd notch at left side on upper bar, draw thread down to corresponding notch on lower bar, wind it around tooth, through next notch to corresponding notch on upper bar. Continue this serpentine winding until 27 vertical strands have been laid (this will leave 1 blank notch at right hand side) pass thread under corner of frame, lay 27 horizontal strands. This completes the first ply. Wind the frame with 24 ply of pastel blue, break off. Tie the darker shade (delf blue) in same notch as 1st vertical strand, draw thread down through corresponding notch on lower bar, skip 1 notch, draw thread through same notch as 3rd vertical strand, continue in this way laying a dark strand over every other vertical strand until right hand bar is reached (14 dark blue strands) pass thread under

corner of frame, draw it through same notch as 1st horizontal strand, continue to wind laying a dark strand over every other light strand until upper bar is reached (14 dark blue horizontal strands). This completes 1 ply of winding (see chart; the heavy lines on chart indicate the dark blue, the light lines the light blue). Wind 8 ply of dark blue, break off. Tie light blue in same notch as 3rd vertical strand, lay light blue thread over each strand of light blue on frame (13 vertical and 13 horizontal strands). This completes the first ply, wind 8 ply of light blue, break off.

Before starting to sew straighten out the rows being careful to have the squares even and the dark blue strands directly over the light strands below. Turn frame over, all the tying is done from wrong side.

Join white thread in first intersection of cross threads at upper right hand corner (A on chart), tie a row of white knots along all 4 sides. Skip the 2nd intersection of cross threads in 2nd horizontal row (B on chart), tie a knot over next intersection (C on chart), continue tying a white knot over every other intersection along all 4 sides. Continue to

*white*  
*skipper blue*  
*pastel blue*  
*2*



repeat the last 2 rounds until center is reached, break off. With the dark shade of blue tie a knot over each of the skipped intersections.

Remove work from frame. Trim fringe to 1¼-inches.

**Place Mats:** (10½-inches by 14-inches)—Set the frame in a 15-inch by 18-inch oblong as follows: lay first bar on table in a horizontal position with teeth up, slip the screw at end of first bar in 6th hole (from screw end) of a second bar, screw wing

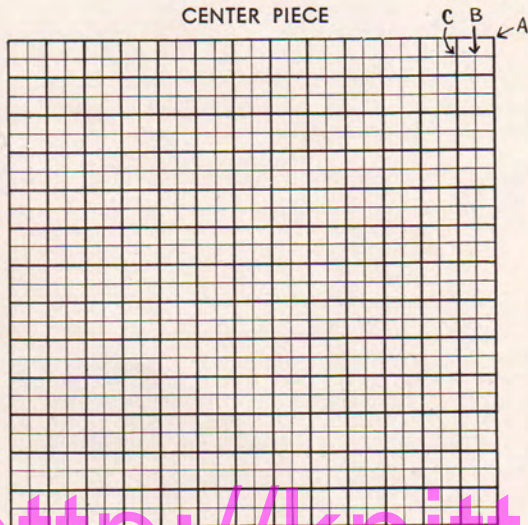
nut in place, slip the screw at end of second bar in end hole of a third bar, slip the screw at end of third bar in 6th hole of a fourth bar, slip the screw at end of fourth bar in end hole of first bar.

Wind the frame with 24 ply of light blue thread (27 vertical strands and 21 horizontal strands on frame), break off. Wind 8 ply of dark blue over every other strand same as on centerpiece. (14 vertical and 11 horizontal dark blue strands, see chart); break off. Wind 8 ply of light blue over each light blue strand on frame (13 vertical and 10 horizontal light blue strands), break off.

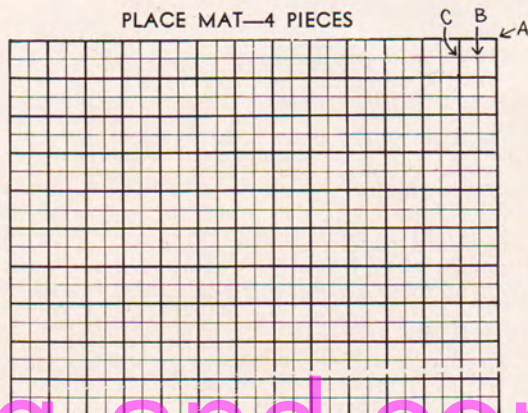
Tie the knots following the directions for tying in centerpiece, fasten off.

Remove work from frame. Trim fringe to 1¼-inches. Make 4 of these mats.

CENTER PIECE



PLACE MAT—4 PIECES



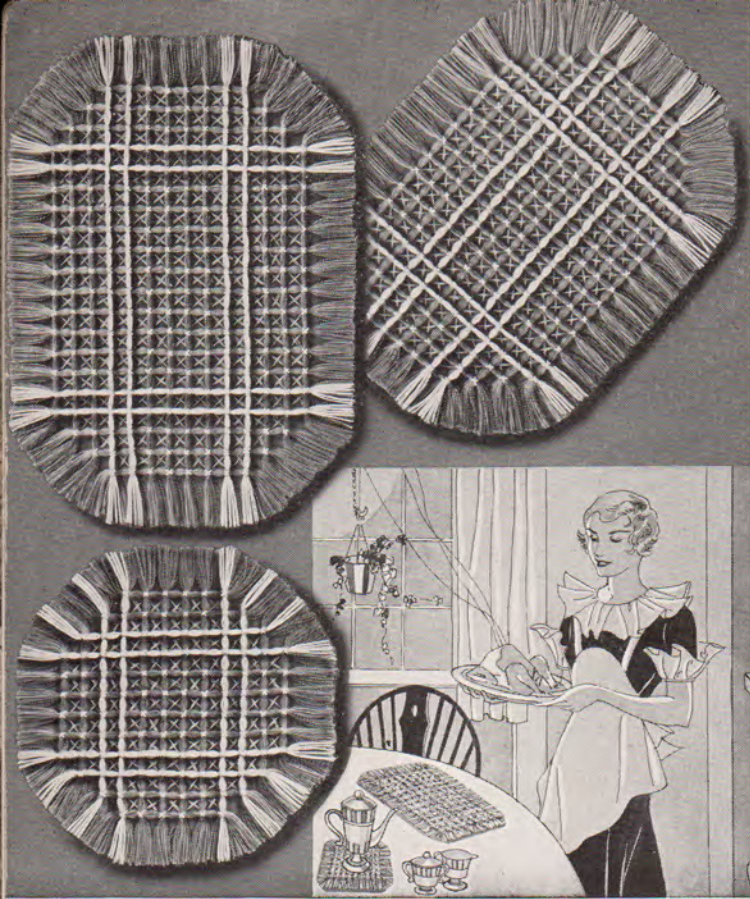
**OTHER SUGGESTED COLOR COMBINATIONS:**

Article 3458	Article 3580	Combination No. 2	Combination No. 3	Combination No. 4	Combination No. 5
12 Balls	17 Balls	Salmon Rose	Pastel Green	Lemon	Orange
2 "	3 "	Brown	Dark Green	Skipper Blue	Dark Green
2 "	2 "	White	White	White	White

<http://knitting-and.com>



# Hot Mat Sets



## Smart 3-Piece Hot Mat Set No. 3636

**MATERIALS**—Bucilla Adjustable "Waffle-Weave" Frame (Patent Applied For) No. 4515. Bucilla Tapestry Needle size 17, No. 3483 for tying and "Waffle-Weave" Needle No. 3478 for working diagonal weaving.

Bucilla Glossitwist Mercerized Crochet and Knitting Cotton, Article 3580, 6 balls Blue and 1 ball White or Bucilla Delustered Super Crochet and Knitting Cotton, Article 3458, 4 balls Blue and 1 ball White.

**Large Mat:** (7-inches by 11-inches)—Set the frame in an 11-inch by 14½-inch oblong as follows: place the first bar on table in a horizontal position with screw at right hand end and teeth up, slip the screw at end of first bar in 4th hole (from screw end) of a second bar, screw wing nut in place, slip the screw at end of second bar in 6th hole of a third bar, slip the screw at end of third bar in 4th hole of a fourth bar, slip the screw at end of fourth bar in 6th hole of first bar.

Tie a strand of main color (pastel blue) in 2nd notch from left side on upper bar, draw thread down to corresponding notch on lower bar, wind it around tooth, through next notch to corresponding notch on upper bar. Continue this serpentine winding until 21 vertical strands have been laid (this will leave 1 blank notch at right hand side) pass thread under corner, lay 14 horizontal strands. This completes the first ply. Wind the frame with 32 ply of blue; break off. Join white in same notch as 4th vertical strand on frame, draw thread down, through corresponding notch on lower bar, wind it around tooth and through next notch (same notch as 5th vertical strand), draw thread up, through corresponding notch on upper bar, skip the next 11 notches, draw thread through next notch (same notch as 17th vertical strand) draw thread down through corresponding notch on lower bar, wind it around tooth,

draw through next notch, up to corresponding notch on upper bar, draw thread through, pass thread under corner of frame, lay a thread on the 4th, 5th, 10th and 11th horizontal strand. This completes first ply of winding. Wind 8 ply of white; break off.

Before starting to sew straighten out the rows, being careful to have squares even and the white strands directly over the blue strands below. Turn frame over, all the tying is done from wrong side.

Join white thread in 1st intersection of cross threads in fourth horizontal row (A on chart), working down right side of frame tie a knot over each of the next 7 intersections (8 knots in row, B on chart), tie 10 knots along next vertical strand (C-D on chart), tie 12 knots along next vertical strand (E-F on chart), tie 14 knots along each of the next 15 vertical strands (see chart). Continue to follow chart to end. With white work in a background of diagonal weaving (see chart, the cross in a square indicates a cross of diagonal weaving), break off.

Remove work from frame. Trim fringe to 1½-inches.

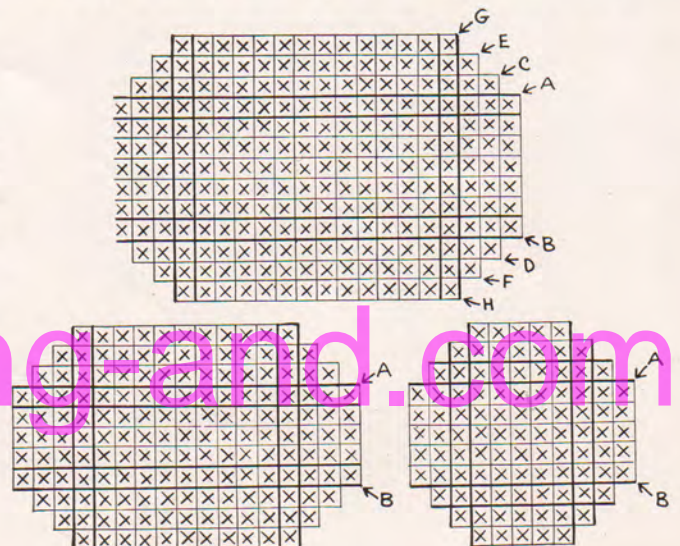
**Medium Size Mat:** (6-inches by 9-inches)—Set frame in a 9½-inch by 13-inch oblong as follows: place the first bar on table in a horizontal position with screw at right hand end and teeth up, slip the screw at end of first bar in 3rd hole (from screw end) of a second bar, screw wing nut in place, slip the screw at end of second bar in 5th hole of a third bar, slip the screw at end of third bar in 3rd hole of a fourth bar, slip the screw at end of fourth bar in 5th hole of first bar.

Wind the frame with 32 ply of blue (18 vertical and 12 horizontal strands on frame), break off. Wind 8 ply of white over the 4th and 5th strand on all 4 sides (same as on large mat, see chart), break off.

Join white thread in first intersection of cross threads in 4th horizontal row (A on chart), working down right side of frame tie a knot over each of the next 5 intersections (6 knots, B on chart). Continue to follow chart to end; break off. Work in the diagonal weaving same as on large mat.

Remove work from frame. Trim fringe to 1½-inches.

**Small Mat:** (6-inch circle)—Set frame in a 9½-



☒=A CROSS OF DIAGONAL WEAVING

*white blue*

<http://www.craft.com>

# Make Lovely Gifts

inch square as follows: place the first bar on table in a horizontal position, slip the screw at end of first bar in 3rd hole (from screw end) of a second bar, screw wing nut in place, slip the screw at end of second bar in 3rd hole of third bar, complete the square.

Wind the frame with 32 ply of blue (12 vertical and 12 horizontal strands on frame), break off. Wind 8 ply of white over the 3rd and 4th strand on all 4 sides (see chart), break off.

Follow the directions for tying in medium size mat (see chart). Work in the diagonal weaving as before.

Remove work from frame. Trim fringe to 1½-inches.

This set can also be made using Salmon Rose, Pastel Green, Lavender or Beige as the background color.

## Novel 3-Piece Hot Mat Set No. 3637

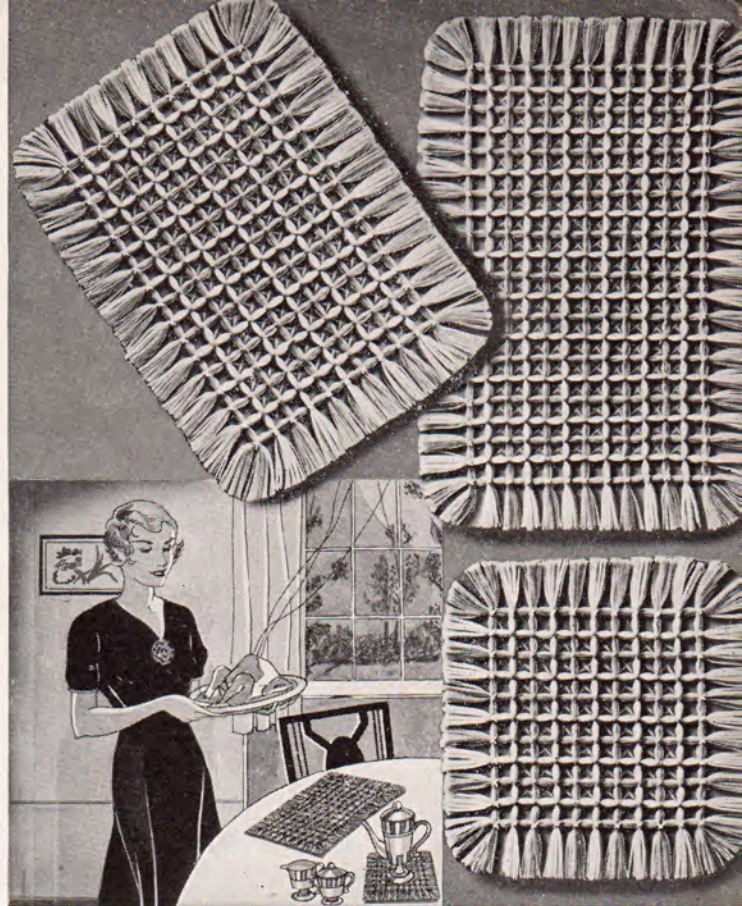
**MATERIALS**—Bucilla Adjustable "Waffle-Weave" Frame (Patent Applied For) No. 4515.

Bucilla Tapestry Needle size 17, No. 3483 for tying and "Waffle-Weave" Needle No. 3478 for working diagonal weaving.

Bucilla Glossitwist Mercerized Crochet and Knitting Cotton, Article 3580, 5 balls White, 2 balls Orange or Bucilla Delustered Super Crochet and Knitting Cotton, Article 3458, 3 balls White, 1 ball Orange.

**Large Mat:** (6½-inches by 11-inches)—Set frame in a 9½-inch by 15-inch oblong as follows: place the first bar on table in a horizontal position with screw at right hand end and teeth up, slip the screw at end of first bar in 3rd hole (from screw end) of a second bar, screw wing nut in place, slip the screw at end of second bar in 6th hole of a third bar, slip screw at end of third bar in 3rd hole of a fourth bar, slip the screw at end of fourth bar in 6th hole of first bar.

Tie a strand of white thread in 2nd notch from left side on upper bar, draw thread down to corresponding notch on lower bar, wind it around tooth, through next notch to corresponding notch on upper bar. Continue this serpentine winding until 21 vertical strands have been laid (this will leave 1 blank notch at right hand size) pass thread under corner,

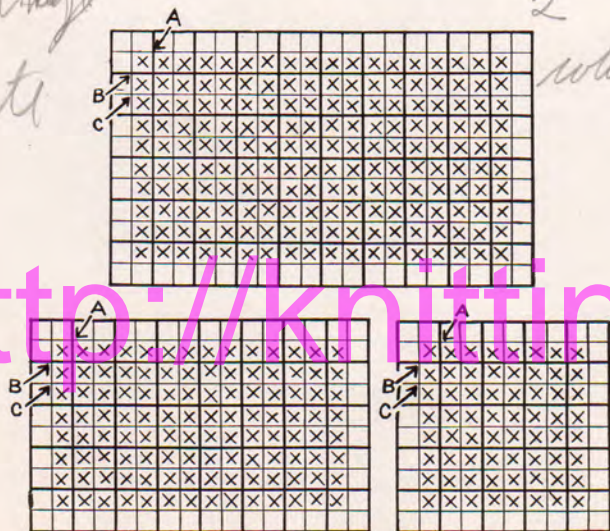


lay 13 horizontal strands. This completes the first ply. Wind frame with 28 ply of white thread, break off. Tie a strand of contrasting color (orange) in same notch as 1st vertical strand, draw thread through corresponding notch on opposite bar, skip 1 notch, draw thread through next notch (same notch as 3rd vertical strand) and up through corresponding notch on upper bar; continue in this way laying a strand of orange over every other white strand, pass thread under corner, draw through same notch as 1st horizontal strand, continue to wind frame laying an orange strand over the 1st, 3rd, 5th, 7th, 9th, 11th and 13th horizontal strand (there should be 11 vertical and 7 horizontal strands of color). Wind 8 ply of orange; break off. Tie white thread in same notch as 2nd vertical strand, draw thread down to corresponding notch on lower bar; continue to lay a white strand over each white strand on frame (10 vertical and 6 horizontal). Wind 8 ply of white, break off (see chart; the heavy lines represent the orange threads and the light lines the white).

Before starting to sew straighten out the rows, being careful to have the squares even and the orange strands directly over the white strands below. Turn frame over, all the tying is done from wrong side.

With white tie a row of knots along all 4 sides of mat; change to orange and tie an orange knot at all other intersections. Join orange thread under 3rd knot in 2nd horizontal row on left side of frame (A on chart) draw thread diagonally across to 2nd knot in 3rd horizontal row (B on chart), slip needle under knot, draw thread down to knot directly below (C on chart), slip needle under knot, continue diagonal weaving until all the diagonal threads have been laid in one direction (the diagonal weaving is worked in the orange knots only), turn and recross in opposite direction (see chart, the cross in square indicates a cross of diagonal weaving).

Remove work from frame. Trim fringe to 1¼-inches.



x = A CROSS OF DIAGONAL WEAVING

**Medium Size Mat:** (5½-inches by 8½-inches)—Set frame in a 9½-inch by 13-inch oblong as follows: lay first bar on table in a horizontal position with screw at right hand end and teeth up, slip the screw at end of first bar in 3rd hole (from screw end) of a second bar, screw wing nut in place, slip the screw at end of second bar in 5th hole of a third bar, slip the screw at end of third bar in 3rd hole of a fourth bar, slip the screw at end of fourth bar in 5th hole of first bar.

Tie a strand of white thread in 2nd notch at left side on upper bar, draw thread down to corresponding notch on lower bar, wind it around tooth, through next notch to corresponding notch on upper bar. Continue the serpentine winding until 17 vertical strands have been laid (this will leave 2 blank notches at right hand side), pass thread under corner, skip the next 2 notches, draw through 3rd notch from lower right hand corner, draw thread across and through corresponding notch on left side of frame; continue winding until upper bar is reached (11 horizontal strands). This completes the first ply. Pass thread under corner, draw through same notch as 1st vertical strand. Wind the frame with 28 ply of white, break off. Tie orange in same notch as 1st vertical strand, draw thread through corresponding notch on lower bar, skip 1 notch, draw through next notch (same notch as 3rd vertical strand) and up through corresponding notch on upper bar, continue in this way, laying a strand of orange over every other white strand, pass thread under corner, draw through same notch as 1st horizontal strand, continue to wind, laying an orange strand over the 1st, 3rd, 5th, 7th, 9th, and 11th horizontal strand (there should be 9 vertical and 6 horizontal strands of color). Wind 8 ply of orange; break off. Tie white thread in same notch as 2nd vertical strand, draw thread down to corresponding notch on opposite bar; continue to lay a white strand over each white strand on frame (8 vertical and 5 horizontal white strands). Wind 8 ply of white, break off (see chart).

With white tie a row of knots along all 4 sides of mat, change to orange and tie an orange knot at all other intersections. With orange work the diagonal weaving same as on large mat.

Remove work from frame. Trim fringe to 1¼-inches.

**Small Mat:** (5½-inch square)—Set frame in a 9½-inch square as follows: lay the first bar on table in a horizontal position with screw at right hand end and teeth up, slip the screw at end of first bar in 3rd hole (from screw end) of a second bar, screw wing nut in place, slip the screw at end of second bar in 3rd hole of a third bar, join other bar to complete the square.

Tie a strand of unbleached thread in 2nd notch at left side on upper bar, draw thread down to corresponding notch on lower bar, wind it around tooth, through next notch to corresponding notch on upper bar. Continue this serpentine winding until 11 vertical strands have been laid (this will leave 2 blank notches at right hand side), pass thread under corner, skip the next 2 notches, draw through 3rd notch from lower right hand corner, draw thread across and through corresponding notch on left side of frame; continue winding until upper bar is reached (11 horizontal strands). This completes the first ply. Pass thread under corner, draw through same notch as 1st vertical strand. Wind the frame with 28 ply of white, break off. Tie orange in same notch as 1st vertical strand, draw thread through corresponding notch on lower bar, skip 1 notch, draw through next notch (same notch as 3rd vertical strand) and up through corresponding notch on upper bar; continue in this way laying a strand of orange over every other white strand, pass thread under corner, draw through same notch as 1st horizontal strand, continue to wind laying an orange strand over the 1st, 3rd, 5th, 7th, 9th and 11th horizontal strand on frame (there should be 6 vertical and 6 horizontal strands of color). Wind 8 ply of color, break off. Tie white thread in same notch as 2nd vertical strand, draw thread down to corresponding notch on opposite bar; continue to lay a white strand over each white strand on frame (5 vertical and 5 horizontal strands). Wind 8 ply of white, break off (see chart). With white tie a row of knots along all 4 sides, break off. With orange tie a knot at each remaining intersection. Work the diagonal weaving same as on large mat.

Remove work from frame. Trim fringe to 1¼-inches.

This set can also be made in Pastel Blue, Pastel Green, Salmon Rose, or Lavender as the contrasting color; or it may be made in all White.

## 3 Piece Set No. 3640 (For Living Room or Breakfast Nook)

(Shown on Page 11)

**MATERIALS**—Bucilla Adjustable "Waffle-Weave" Frame (Patent Applied For) No. 4515.

Bucilla Tapestry Needle size 17, No. 3483 for tying and "Waffle-Weave" Needle No. 3478 for working diagonal weaving.

Bucilla Glossitwist Mercerized Crochet and Knitting Cotton, Article 3580, 8 balls Brown, 1 ball each of Pastel Green, Orange and Delft Blue or

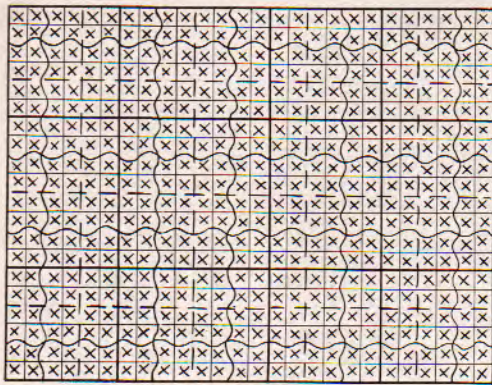
Bucilla Delustered Super Crochet and Knitting Cotton, Article 3458, 6 balls Brown, 1 ball each of Pastel Green, Orange and Delft Blue.

**Large Mat:** (10½-inches by 14-inches)—Set frame in a 15-inch by 18-inch oblong as follows: place the first bar on table in a horizontal position with screw at right hand end and teeth up, slip the screw at end of first bar in 6th hole (from screw end) of a second bar, screw wing nut in place, slip the screw at end of second bar in end hole of a third bar, slip the screw at end of third bar in 6th hole of a fourth bar, slip the screw at end of fourth bar in end hole of

first bar.

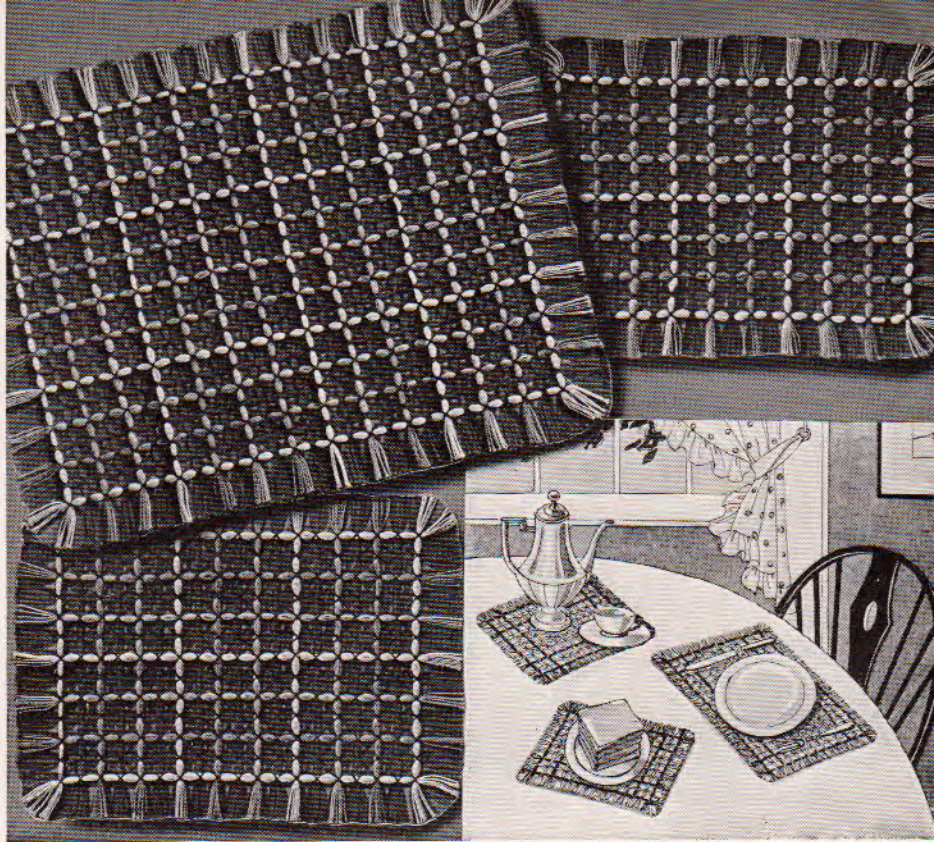
Tie a strand of main color (brown) in 2nd notch at left side on upper bar, draw thread down to corresponding notch on lower bar, wind it around tooth, through next notch to corresponding notch on upper bar. Continue this serpentine winding until 27 vertical strands have been laid (this will leave 1 blank notch at right hand side) pass thread under corner of frame, lay 21 horizontal strands. This completes

1 brown  
2 pastel green  
3 orange  
4 delft blue



2 PIECES

- = GREEN
- ~ = ORANGE
- - - = BLUE
- ⊠ = CROSS OF DIAGONAL WEAVING



the first ply. Wind the frame with 24 ply of brown thread, break off. Cut 8 strands of green each 24-inches long. Tie one end of the green strands in same notch as 1st vertical strand on frame, tie the opposite end of green strands in corresponding notch on lower bar. Tie a group of green strands over the 7th, 15th, 21st and 27th vertical strand (see chart, the heavy lines indicate the green strands). Tie a group of 8 strands of orange over the 3rd, 9th, 13th, 19th and 25th vertical strand on frame (see chart, the wavy lines on chart indicate the orange strands); tie a group of 8 strands of blue over the 5th, 11th, 17th and 23rd vertical strand (see chart, the dashed lines on chart indicate the blue strands). Cut 8 strands of green each 30 inches long, tie the green strands over 1st horizontal strand on frame, tie other groups over the 7th, 15th and 21st horizontal strand (see chart); tie orange groups over the 3rd, 9th, 13th and 19th horizontal strand (see chart, tie blue groups over the 5th, 11th and 17th horizontal strand (see chart). Tie a strand of brown in same notch as 2nd vertical strand on frame, draw thread through corresponding notch on lower bar, skip next notch, draw through same notch as 4th vertical strand; continue in this way laying a strand of brown over every other strand, 13 vertical strands in all, pass thread under corner of frame, draw through same notch as 2nd horizontal strand, draw through corresponding notch on opposite side, continue to wind laying a strand of brown over every other horizontal strand, 10 horizontal strands in all. This completes the first ply, wind 8 ply of brown, break off.

Before starting to sew straighten out the rows, being careful to have the squares even and the colored strands directly over the brown strands below. Turn frame over, all the tying is done from wrong side.

With brown tie a knot at each intersection, break off. With brown work a background of diagonal weaving, making a brown cross (from corner to corner) in each square (see chart; the cross in a square indicates a cross of diagonal weaving), break off.

Remove work from frame. Trim fringe to 1½-inches.

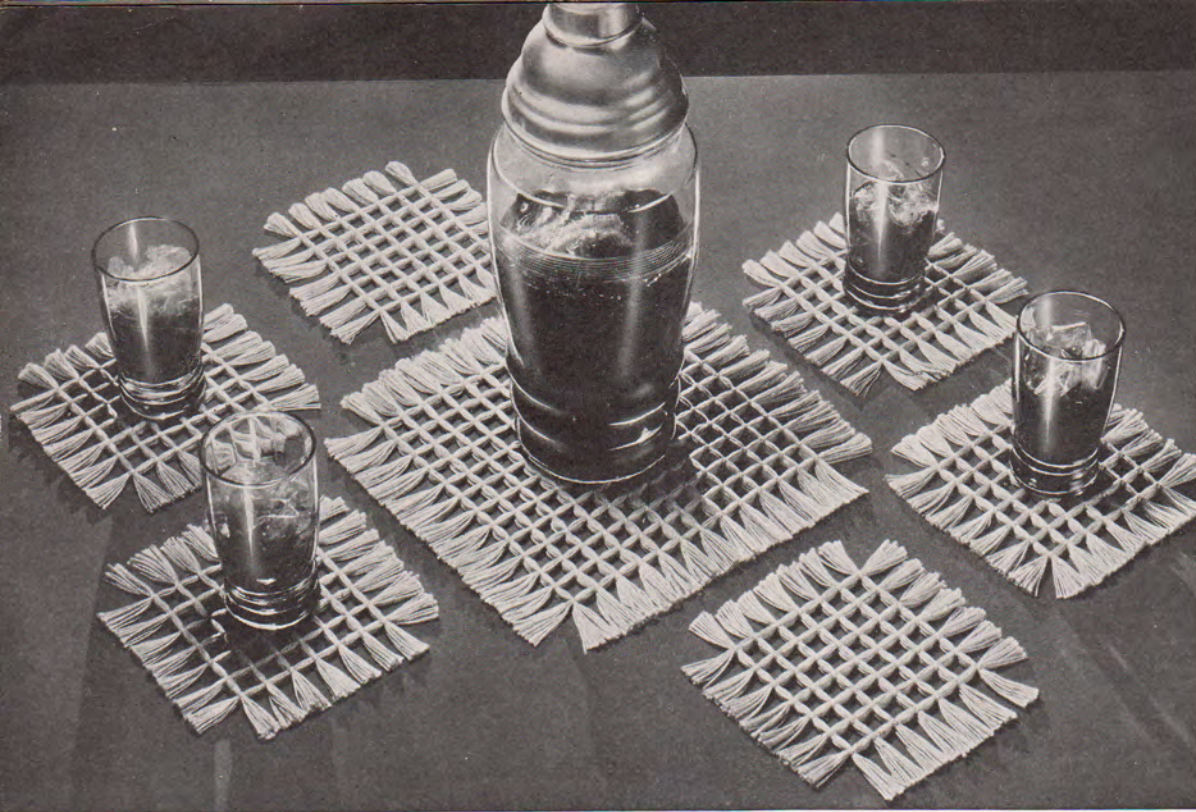
**Small Mat:** (6½-inches by 10-inches)—Set frame in a 9½-inch by 13-inch oblong as follows: place the first bar on table in a horizontal position with teeth up, slip the screw at end of first bar in 3rd hole (from screw end) of a second bar, screw wing nut in place, slip the screw at end of second bar in 5th hole of a third bar, slip the screw at end of third bar in 3rd hole of a fourth bar, slip the screw at end of fourth bar in 5th hole of first bar.

Wind the frame with 24 ply of brown thread (there should be 19 vertical and 13 horizontal strands on frame), break off. Tie strands of 8 green threads each 15½-inches long over the 1st, 7th, 13th and 19th vertical strand on frame (see chart), tie orange strands over the 3rd, 9th and 17th vertical strand on frame (see chart), tie blue strands over the 5th, 11th and 15th vertical strand. Tie strands of 8 green threads each 19-inches long over the 1st, 7th and 13th horizontal strand on frame (see chart), tie orange strands over the 3rd and 11th horizontal strand, tie blue strands over the 5th and 9th horizontal strand. Tie brown in same notch as 2nd vertical strand, draw through corresponding notch on lower bar, skip the next notch, draw through same notch as 4th vertical strand, continue in this way laying a strand of brown over every other vertical strand on frame (9 brown vertical strands), pass thread under corner, draw it through same notch as 2nd horizontal strand, draw thread through corresponding notch on opposite bar, continue to wind laying a brown strand over every other horizontal strand (6 brown horizontal strands). This completes 1 ply, wind 8 ply of brown; break off.

With brown tie a knot at each intersection of cross threads. Work the diagonal weaving same as on large mat.

Remove work from frame. Trim fringe to 1½-inches. Make a duplicate mat.

This set can also be made with a black background instead of brown.



## 7 Piece Refreshment Set No. 3642

*orange black*

*2 colors*

**MATERIALS**—Bucilla Adjustable "Waffle-Weave" Frame (Patent Applied For) No. 4515.

Bucilla Tapestry Needle size 17, No. 3483.

Bucilla Glossitwist Mercerized Crochet and Knitting Cotton, Article 3580, 4 balls Orange and 1 ball Black or

Bucilla Delustered Super Crochet and Knitting Cotton, Article 3458, 3 balls Orange and 1 ball Black.

**Large Mat:** (6½-inches square)—Set frame in a 9½-inch square as follows: place the first bar on table in a horizontal position with screw at right hand side and teeth up, slip the screw at end of first bar in 3rd hole (from screw end) of a second bar, screw wing nut in place, slip the screw at end of second bar in 3rd hole of a third bar, slip the screw at end of 3rd bar in 3rd hole of a 4th bar, slip the screw at end of fourth bar in 3rd hole of first bar.

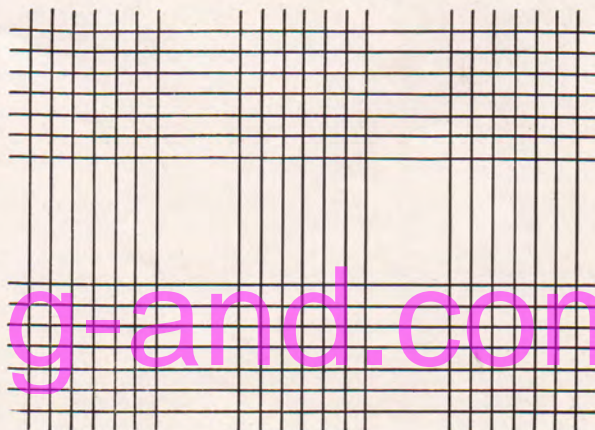
Tie a strand of main color (orange) in 2nd notch at left side on upper bar, draw thread down to corresponding notch on lower bar, wind it around tooth, through next notch to corresponding notch on upper bar. Continue this serpentine winding until right hand bar is reached (13 vertical strands), pass thread under corner of frame, draw it through 1st notch at lower right hand corner, draw thread across and through corresponding notch on left side of frame; continue winding until upper bar is reached (13 horizontal strands). This completes the first ply. Pass thread under corner of frame, draw it through same notch as 1st vertical strand. Wind the frame with 28 ply of orange, break off.

Before starting to sew straighten out the rows making the squares as even as possible. Turn frame over, all the tying is done from wrong side.

With contrasting color (Black) tie a knot over each intersection of cross threads, break off. Remove work from frame. Trim fringe to 1¼ inches.

**Glass Mat:** (3¼-inches square)—Set frame in a 13-inch by 18-inch oblong as follows: place the first bar on a table in a horizontal position with screw at right hand end and teeth up, slip the screw at end of first bar in 5th hole (from screw end) of a second bar, screw wing nut in place, slip screw at end of second bar in end hole of a third bar, slip screw at end of third bar in 5th hole of a fourth bar, slip the screw at end of fourth bar in end hole of first bar.

Tie a strand of orange in 2nd notch from left side



on upper bar, draw thread down to corresponding notch on lower bar, wind it around tooth, through next notch to corresponding notch on upper bar. Continue this serpentine winding until 7 vertical strands have been laid, skip 3 notches, draw thread through next notch (11th notch from left hand side on lower bar) and up to corresponding notch on upper bar, continue winding until a second group of 7 vertical strands have been laid, skip the next 3 notches lay a third group of 7 vertical strands (this will leave 1 blank notch at right hand side), pass thread under corner, draw thread through first notch from lower right hand corner, across frame and

through corresponding notch on left hand bar; wind a group of 7 horizontal strands, skip next 5 notches, draw thread through next notch, wind a second group of 7 horizontal strands. This completes the first ply. There are now 6 groups of 36 squares on frame (see chart).

With black tie a knot at each intersection of cross threads.

Remove work from frame, cut the 6 glass mats apart. Trim fringe to 1 1/4-inches.

This set can also be made using Red in place of Orange and White in place of Black or Aqua in place of Orange and Orange in place of Black.

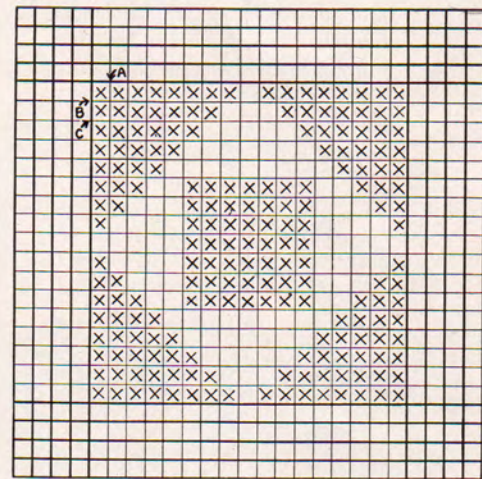
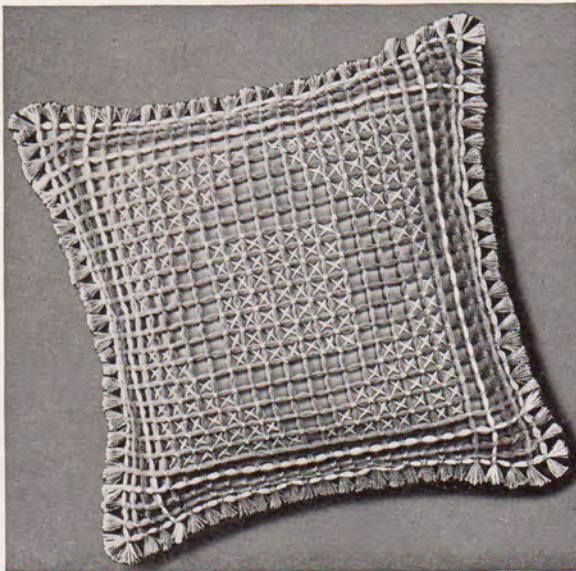
## Boudoir Pillow No. 3641

**MATERIALS**—Bucilla Adjustable "Waffle-Weave" Frame (Patent Applied For) No. 4515.

Bucilla Tapestry Needle size 17, No. 3483 for tying and "Waffle-Weave" Needle No. 3478 for working diagonal weaving.

Bucilla Glossitwist Mercerized Crochet and Knitting Cotton, Article 3580, 3 balls Green, 1 ball each of Lemon, Pastel Blue, Salmon Rose, White and Lavender or

Bucilla Delustered Super Crochet and Knitting Cotton, Article 3458, 2 balls Medium Green, 1 ball each of Lemon, Salmon Rose, Pastel Blue, White and Lavender.



☒ = A CROSS OF DIAGONAL WEAVING

Set the frame in an 18-inch square as follows: place the first bar on table in a horizontal position with teeth up, slip the screw at end of first bar in end hole of a second bar, screw wing nut in place, join the other 2 bars to form a complete square.

Tie a strand of main color (green) in 2nd notch at left side on upper bar, draw thread down to corresponding notch on lower bar, wind it around tooth, through next notch to corresponding notch on upper bar. Continue this serpentine winding until 26 vertical strands have been laid (this will leave 2 blank notches at right hand side) pass thread under corner of frame, lay 26 horizontal strands. This completes the first ply. Wind frame with 16 ply of green,

break off. Tie 1st color (yellow) in same notch as 1st vertical strand, draw thread through corresponding notch on lower bar, pass thread under lower left hand corner of frame and through same notch as 1st horizontal strand, across frame and through corresponding notch on right hand bar, pass thread under lower right hand corner of frame, draw through same notch as 1st vertical strand from right bar, draw thread up through corresponding notch on upper bar, pass thread under upper right hand corner and draw through same notch as 1st horizontal strand from upper bar, draw thread through corresponding notch on left hand bar. This completes 1 ply of winding, make 8 ply of yellow, break off. Tie 2nd color (blue)

in same notch as 2nd vertical strand on frame, wind 8 ply of blue along all 4 sides, break off. Tie 3rd color (salmon rose) in same notch as 3rd vertical strand on frame, wind 8 ply of salmon rose along all 4 sides, break off. Tie 4th color (white) in same notch as 4th vertical strand on frame, wind 8 ply of white along all 4 sides, break off. Tie 5th color (lavender) in same notch as 5th vertical strand on frame, wind 8 ply of lavender along all 4 sides (see chart, the heavy lines represent the 5 colors used in border and the light lines the main color), break off.

Before starting to sew straighten out the rows, being careful to have the squares even and the colored strands directly over the green strands below. Turn frame over, all the tying is done from wrong side.

With white tie 6 rows of knots along all 4 sides.

*Seventh round:* 6 white, 2 green, 6 white to corner, repeat on other 3 sides. *Eighth round:* 4 white, 4 green, 4 white to corner, repeat along other 3 sides. *Ninth round:* 2 white, 6 green, 2 white to corner, repeat on other 3 sides. Tie the remaining knots with white. Join white thread under 6th knot in 5th horizontal row on left side of frame (A on chart) draw thread diagonally across to 5th knot in 6th horizontal row (B on chart), slip needle under knot, draw thread down to knot directly below (C on chart), slip needle under knot (see chart, the cross in a square indicates a cross of diagonal weaving). Continue diagonal weaving until all the diagonal threads have been laid in one direction, turn and re-cross in opposite direction.

Remove work from frame. Trim fringe to 1-inch.

**OTHER SUGGESTED COLOR COMBINATIONS:**

Article 3458	Article 3580	Combination No. 2.	Combination No. 3.	Combination No. 4.
2 Balls	3 Balls	Lemon	Pastel Blue	Salmon Rose
1 "	1 "	Salmon Rose	Salmon Rose	Lemon
1 "	1 "	Pastel Blue	Lemon	Pastel Blue
1 "	1 "	Lavender	Lavender	Lavender
1 "	1 "	White	White	White
1 "	1 "	Pastel Green	Pastel Green	Pastel Green

## 3 Piece Chair Set No. 3639

*linen  
black  
2 colors*

**MATERIALS**—Bucilla Adjustable "Waffle-Weave" Frame (Patent Applied For) No. 4515.

Bucilla Tapestry Needle size 17, No. 3483 for tying and "Waffle-Weave" Needle No. 3478 for working diagonal weaving.

Bucilla Glossitwist Mercerized Crochet and Knitting, Article 3580, 7 balls Linen and 1 ball Black or

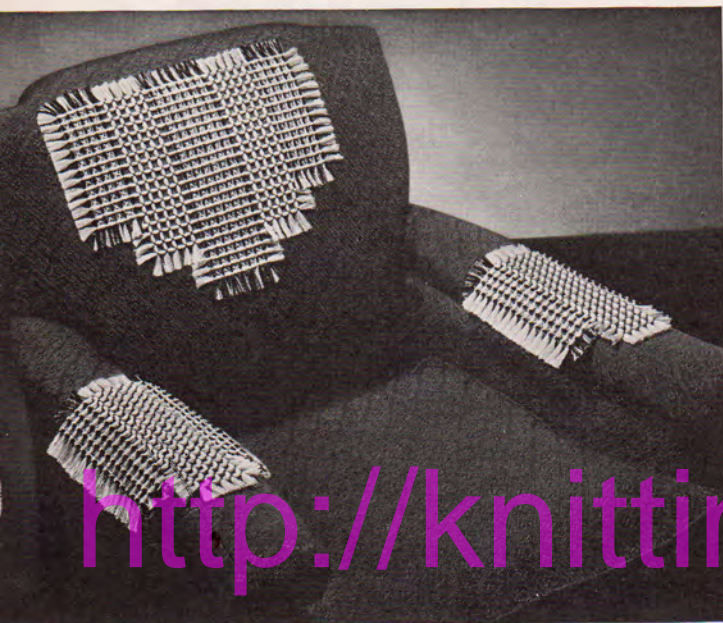
Bucilla Delustered Super Crochet and Knitting Cotton, Article 3458, 5 balls Linen, 1 ball Black.

**Chair Back**—Set frame in a 14½-inch by 18-inch oblong as follows: place the first bar on table in a horizontal position with screw at right hand side and teeth up, slip the screw at end of first bar in 6th

hole (from screw end) of a second bar, screw wing nut in place, slip the screw at end of second bar in end hole of a third bar, slip the screw at end of third bar in 6th hole of a fourth bar, slip the screw at end of fourth bar in end hole of first bar.

Tie a strand of main color (linen) in 2nd notch at left hand side on upper bar, draw thread down to corresponding notch on lower bar, wind it around tooth, through next notch to corresponding notch in upper bar. Continue this serpentine winding until 27 vertical strands have been laid (this will leave 1 blank notch at right hand side) pass thread under corner of frame lay 21 horizontal strands (this will leave 1 blank notch). This completes the first ply, wind 24 ply of linen; break off. Cut 10 strands of contrasting color (black) each 24-inches long. Tie one end of the black strands in same notch as 1st vertical strand, tie opposite end of black strand in corresponding notch on lower bar. Tie a group of 10 black threads over each of the first 5 vertical strands, skip the next 5 vertical strands, tie a group of 10 black threads 30-inches long over each of the next 7 vertical strands, skip the next 5 vertical strands, tie a group of 10 black threads over each of the 5 remaining vertical strands (see chart, the heavy lines indicate the black thread and the light lines the linen thread).

Before starting to sew straighten out the rows being careful to have the squares even and the black strands over the linen strands below. Turn frame



over, all the work is done from wrong side.

With linen thread tie a knot in first intersection of cross threads at upper right hand corner of frame (A on chart), working down right side of frame tie a knot in each of the next 12 intersections (13 knots in row, B on chart), tie a row of 13 knots over each of the next 4 vertical strands, break off. With black tie a knot over each of the first 17 intersections on next vertical strand (C-D on chart), work 4 more rows, break off. With linen thread tie a knot over each of the first 21 intersections on next vertical strand (E-F on chart), work 6 more rows, break off. With black tie a knot over each of the first 17 intersections on next vertical strand (G-H on chart), work 4 more rows, break off. With linen thread tie a knot in each of the first 13 knots on next vertical strand, work 4 more rows, break off.

Join linen thread under 2nd knot in first horizontal row on left side of frame (I on chart), draw thread diagonally down to first knot in 2nd horizontal row (J on chart), slip needle under knot, draw thread down to knot directly below (K on chart), slip needle under knot, continue diagonal weaving until all the diagonal threads have been laid in one direction (see chart, the cross in square indicates a cross of diagonal weaving) turn and recross in opposite direction.

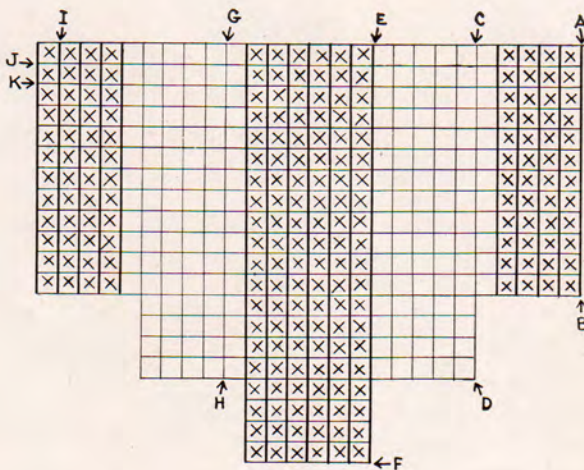
Remove work from frame. Trim fringe to 1-inch.

**Arm Rest**—Set frame in a 9½-inch by 14½-inch oblong as follows: place the first bar on table in a horizontal position with teeth up, slip the screw at end of first bar in 6th hole (from screw end) of a second bar, screw wing nut in place, slip the screw at end of second bar in 3rd hole of a third bar, slip the screw at end of third bar in 6th hole of a fourth bar, slip the screw at end of fourth bar in 3rd hole of first bar.

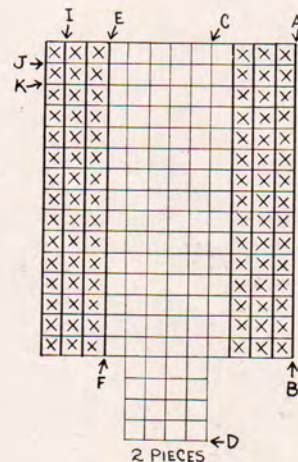
Tie a strand of linen thread, in 2nd notch from left side on upper bar, draw thread down to corresponding notch on lower bar, wind it around tooth, through next notch to corresponding notch on upper bar. Continue this serpentine winding until 13 vertical strands have been laid, pass thread under corner, skip the first 2 notches on right hand bar, draw thread through 3rd notch, continue winding until upper bar is reached (20 horizontal strands). This completes the first ply. Wind the frame with 24 ply of linen, break off. Cut 10 strands of black each 24-inches long. Tie one end of the black strands in same notch as 1st vertical strand, tie opposite end of black strand in corresponding notch on lower bar. Tie a group of 10 black threads over each of the first 4 vertical strands, skip the next 5 vertical strands, tie a group of 10 black threads over each of the remaining 4 vertical strands (see chart, the heavy lines indicate the black thread and the light lines the linen thread).

With linen thread tie a knot in first intersection of cross threads at upper right hand corner of frame (A on chart) working down right side of frame tie a knot in each of the next 15 intersections (16 knots in row, B on chart), tie a row of 16 knots over each of the next 3 vertical strands, break off. With black tie a knot over each of the first 20 intersections on next vertical strand (C-D on chart), work 4 more rows, break off. With linen thread tie a knot over each of the first 16 intersections on next vertical strand, work 3 more rows, break off. With linen thread work the diagonal weaving same as in chair back.

Remove work from frame. Trim fringe to 1-inch. Make a duplicate arm rest. This set can also be made using White in place of Linen.



⊗ = A CROSS OF DIAGONAL WEAVING



2 PIECES

**IMPORTANT**—At the time you make your initial purchase of any colored cotton for the piece you intend to make, it is important that you buy the complete amount of each color necessary to finish the article, making sure that it is all of one dye lot number as the next lot number of any color may differ slightly in shade from the original lot you purchased and make it impossible to complete your article satisfactorily.



# DIRECTIONS FOR USING THE NEW BUCILLA

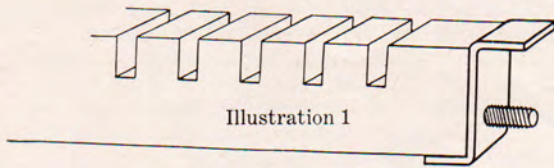


Illustration 1

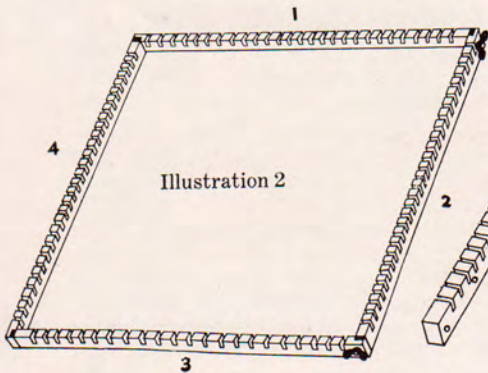


Illustration 2

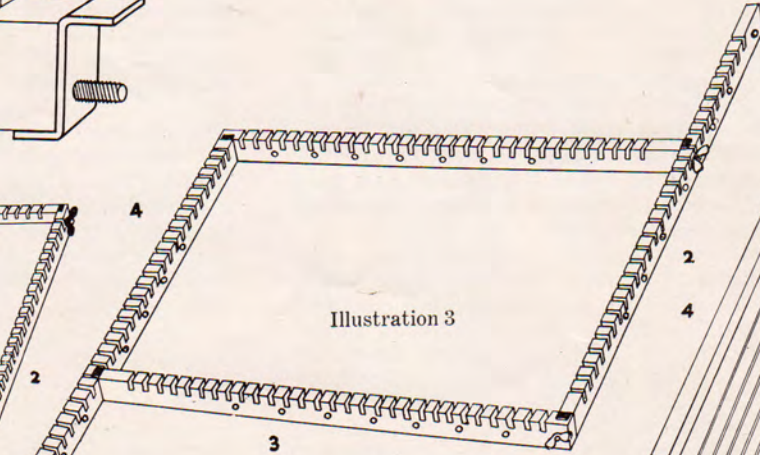


Illustration 3

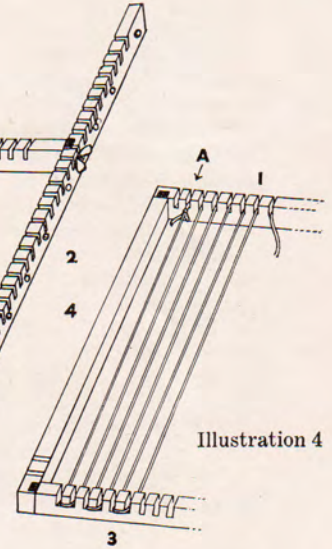


Illustration 4

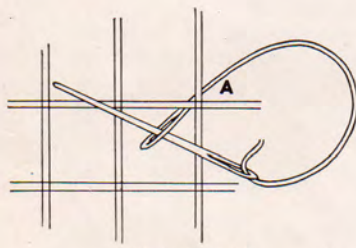


Illustration 5

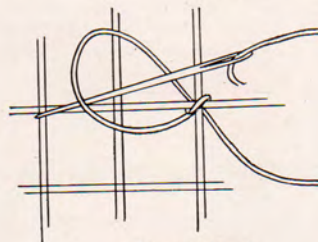


Illustration 6

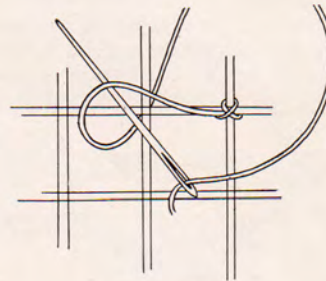


Illustration 7

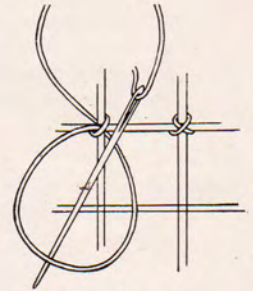


Illustration 8

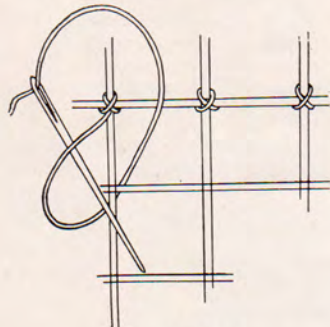


Illustration 9

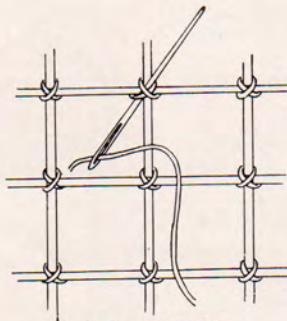


Illustration 10

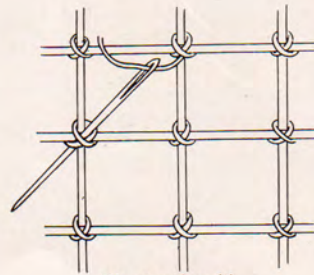


Illustration 11

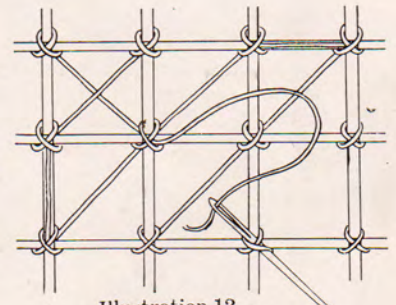


Illustration 12

**To Adjust Frame**—The frame consists of 4 bars identical in size and construction. The notches and teeth are used for winding and the holes for adjusting the frame to different sizes.

Slip an S-shaped bracket on screw at end of each bar (see illustration 1). Place the first bar on table in a horizontal position with screw at right hand end and teeth up, slip the screw at end of first bar in end hole of a second bar, screw the wing nut over the protruding end of screw, tighten nut; join the remaining bars to form a complete square (see illustration 2). This makes an 18 inch square, the

largest obtainable on this frame.

The frame can be adjusted to a variety of different size squares and oblongs by fastening the screws in different holes on bars. For example: To make an oblong 13 inches by 18 inches, place the first bar on table in a horizontal position with teeth up, slip the screw at end of first bar in fifth hole (from screw end) of a second bar (the holes are always counted from screw end of bar), screw wing nut in place, slip the screw at end of second bar, in end hole of a third bar, screw in place; slip the screw at end of a third bar in fifth hole of a fourth bar, screw in

# ADJUSTABLE "WAFFLE-WEAVE" FRAME No. 4515

PAT. APPLIED FOR

place; slip the screw at end fourth bar in hole at end of first bar. This forms a 13 inch by 18 inch oblong (see illustration 3).

**To Wind Frame**—Tie a single strand of thread in second notch from upper left hand corner on bar No. 1 (see A in illustration 4), draw thread down to first notch on lower bar No. 3 (the wide tooth next to screw counts as one and corresponds to second notch on the opposite side); wind thread around tooth, through second notch and up to third notch on bar No. 1 (see illustration 4). The thread must be drawn tight enough so that the strands do not sag. All the strands must run parallel to each other and to the frame. Continue in same way to wind until right hand side is reached (there will be 28 vertical strands on large square), pass thread under corner of frame coming up underneath bar No. 2, draw thread through second notch on bar No. 2, across to first notch on opposite bar, around tooth, through second notch, across to third notch on bar No. 2, continue this serpentine winding until lower bar is reached (28 horizontal strands across frame). This completes 1 ply (one layer of work). Pass thread under corner, draw thread through same notch as first vertical strand. Continue until the requisite number of layers (ply) have been wound (see illustration on front cover), tie end securely to frame. The number of ply to be wound depends on the thickness desired in the finished article.

**To Tie Knots**—Use a No. 3483 Tapestry needle for tying. All the tying is done from wrong side. Hold work with wrong side up. Cut a piece of thread about 3 yards long, double it. Thread the 2 ends through eye of needle, the loop end will be used in place of a knot. *To fasten thread*: draw thread under first intersection of cross threads at (A on illustration 5), insert the needle down at lower left hand corner of cross threads and bring it up in upper right hand corner of crossing, slip needle through loop at end of thread (see illustration 5), pull stitch tight. *To complete the cross*: draw thread again under same intersection but inserting needle down at upper left and up in lower right corner, slip needle through loop from right to left (see illustration 6), set stitch (to set the stitch draw thread so that loop comes directly over center of intersection), pull thread to left, in same direction as next cross, this will lock stitch. The knots must be pulled very tight to prevent slipping. This completes the first cross.

Continue to work across upper row as follows: draw thread under next intersection inserting needle down at lower left hand corner of cross threads and up in upper right hand corner, slip needle upward through loop from right to left in same direction as next cross (see illustration 7), set stitch, pull thread to left to lock stitch. This is the first half of cross. *Second half of cross*: draw thread again under same intersection but inserting needle down at upper left hand corner of cross threads and up in lower right hand corner, slip needle through loop from right to

left (see illustration 6), set stitch, pull thread to left to lock stitch. This completes a cross. Continue to work a cross under each intersection until corner crossing is reached. In making the corner cross make the first half same as before. *Second half of cross*: draw thread under same intersection as before inserting needle down at lower right corner and up in upper left corner, slip needle downward through loop (see illustration 8), set stitch, pull thread downward in same direction as next cross to lock the stitch.

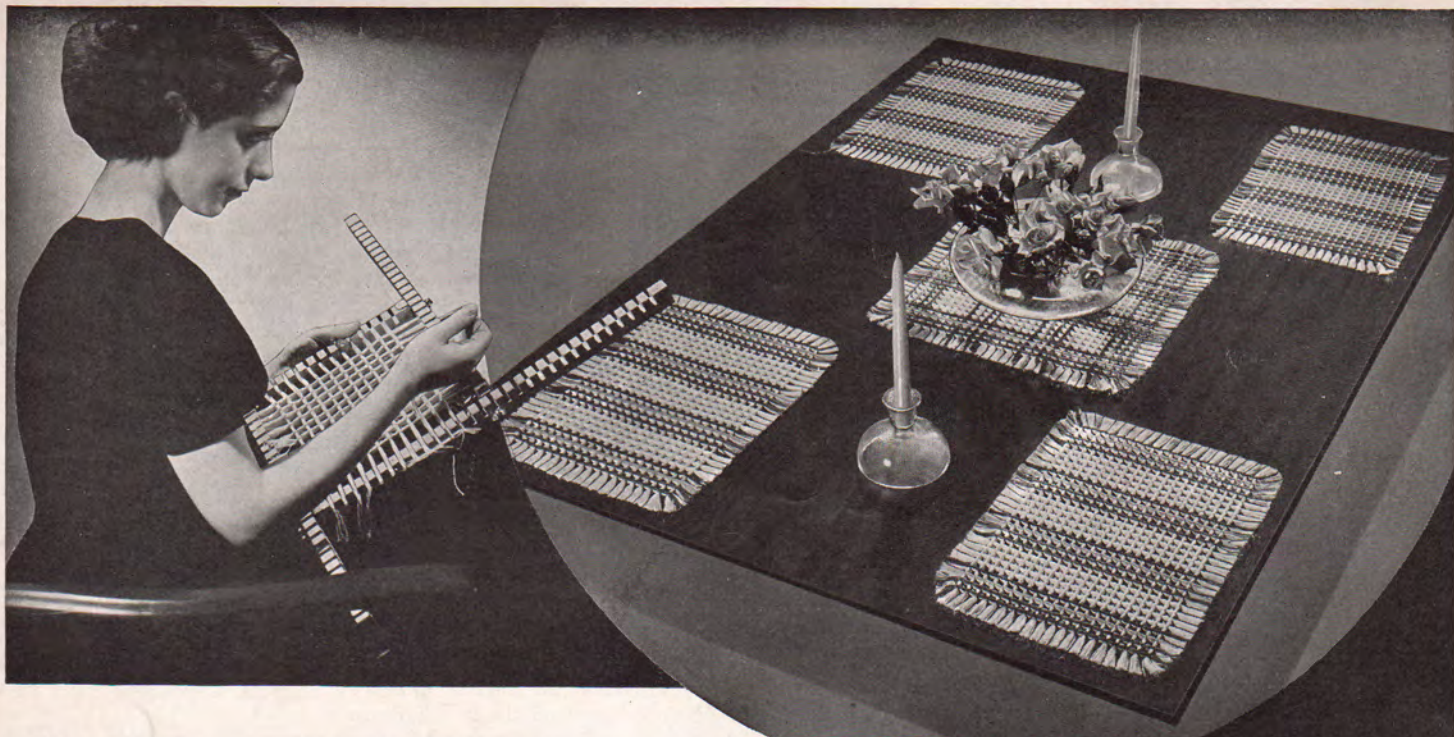
**To Work Down Left Side of Frame**—Draw thread under next intersection inserting needle down at lower left corner and up in upper right hand corner, slip needle downward through loop in same direction as next cross (see illustration 9), set stitch, draw thread downward to lock stitch. *Second half of cross*: draw thread under same intersection as before inserting the needle down at lower right hand corner and up in upper left hand corner, slip needle downward through loop (see illustration 8), set stitch, pull thread downward to lock stitch. This completes a cross. Continue to make these crosses down side of frame until corner cross is reached, make first half of corner cross, then turn frame so that the corner cross to be completed is at upper right hand side as at beginning. Continue to work across top and down left side as before. It is very important to work each cross as directed in order to have all threads cross in same direction on right side of work.

**Diagonal Weaving**—Use a No. 3480 Chenille Needle for weaving. It is advisable when tying not to pull the knots that are later to be used as a foundation for diagonal weaving, too tight. Thread needle with double thread as before, draw thread under first knot from upper left hand corner inserting the needle upward under knot diagonally from left to right (see illustration 10), slip needle through loop at end of thread. Draw thread diagonally to first knot from side of frame in row below, slip needle downward diagonally from right to left (see illustration 11), draw thread down straight to knot directly below, insert needle under knot diagonally from left to right, draw thread diagonally up to second knot from side of frame in row above. Continue in this way running a thread diagonally from upper right to lower left corner of each square. When all the squares have been crossed, recross them in opposite direction (see illustration 12).

**To Remove Work from Frame**—Use a sharp knife or blade, cut the threads crossed under corners of frame, then cut the threads wound around teeth. Trim fringe to desired length.

**Washing**—Wash the article in lukewarm soapy water. Lay the piece on an ironing board, pinning it as near the original size as possible. All waffle weaving shrinks slightly in washing but anything lost in the size will be gained in thickness and fluffiness.

# BUCILLA CROCHET COTTONS — IDEAL FOR "WAFFLE-WEAVING"



"Waffle-Weaving" is doubly fascinating when you use Bucilla Boilproof Crochet Cottons! These fine quality cottons are made from choice, long staple threads and have a resiliency and strength that is particularly good for "Waffle-Weave" creations! When you use Bucilla Crochet Cottons together with the new Bucilla Adjustable "Waffle-Weave" Frame you have the assurance that your creation will be right and be the envy of all your friends! Don't be misled by cheaper, inferior brands of cotton—they may save you a few cents in the beginning but prove utterly disappointing in the long run. Use Bucilla Cottons and feel secure in the knowledge you are using the best threads available . . . the only crochet and knitting cottons made in absolutely Boilproof colors!

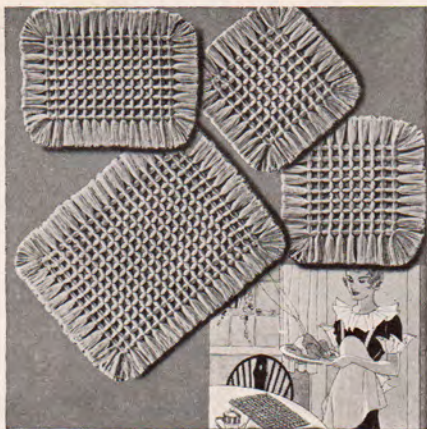
The new improved Adjustable "Waffle-Weave" Frame (Pat. Applied For) illustrated above is used to make all the articles shown in this book. Your articles cannot be made correctly in accordance with the instructions contained in this book unless you purchase this new improved frame.

It is sturdily constructed of fine quality, full kiln dried Maple that will not warp . . . it is easy to adjust to various sizes for making articles from 6" to 18" and is very easy to set up and work.

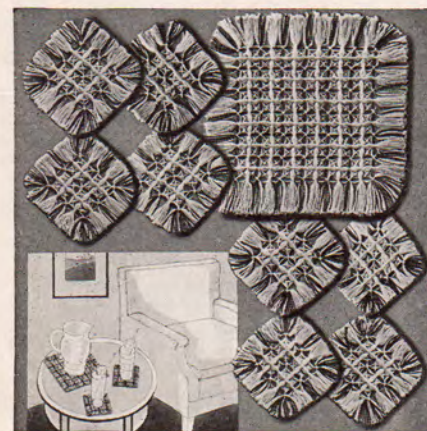


# SIX ADDITIONAL SMART "WAFFLE-WEAVE" SETS

PACKED IN HANDY COMPACT KITS



**Set of 4 Hot Plate Mats—Kit No. 3626**  
May be had in Green and Unbleached Combination or Orange and Unbleached. Boilproof Cotton to complete and instructions for working included.



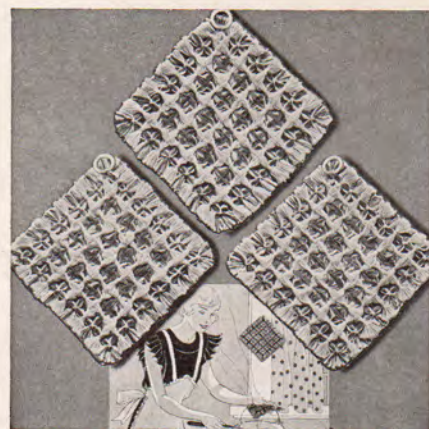
**9 Piece Refreshment Set—Kit No. 3628**  
Consists of 1 doily approx. 9" square and 8 doilies each approx. 5" square. Unbleached and Black Crochet Cotton to complete set, and instructions for working included.

If you're looking for something entirely new and appealing—look to "Waffle-Weaving"! Even if you do not know how to knit, crochet or embroider you can still possess lovely things for the home . . . it's child's play!

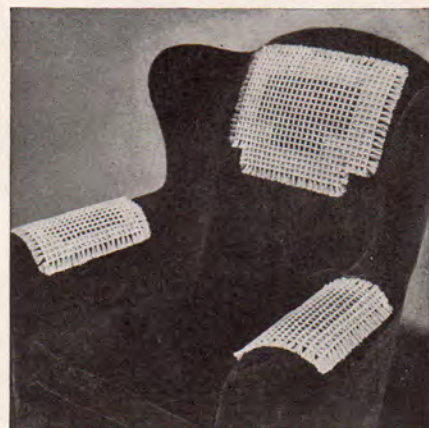
"Waffle-Weaving" is in reality a revival of an old art and particularly featured in Blind Institutions and Veteran's Hospitals due to its utter simplicity. The old art of "Waffle-Weaving" was very crude but with the new Bucilla Adjustable "Waffle-Weave" Frame (Pat. Applied For) it has been simplified to such an extent that even a child, with very little instruction, can create attractive accessories for the home.

Illustrated on this page is a collection of new, easy-to-do creations. Each kit pictured contains sufficient fine quality cotton to complete the entire article and illustrated directions for working.

The "Waffle-Weave" Frame is not included in the price of the kit. This must be purchased separately. Ask for the new Bucilla Adjustable "Waffle-Weave" Frame . . . it is made of full kiln dried Maple that will not warp. It is very easy to set up and work, and will make articles from 6 to 18". All directions contained in the kits shown on this page call for this new modernized frame. *For perfect results insist on it!*

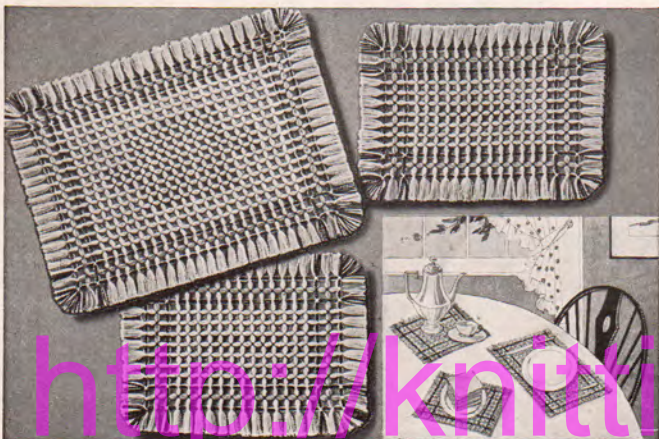


**Set of 3 Potholders—Kit No. 3629**  
May be had in Unbleached and Blue combination or Unbleached and Red. Includes Unbleached and Boilproof Crochet Cotton to complete, rings, and instructions for working.



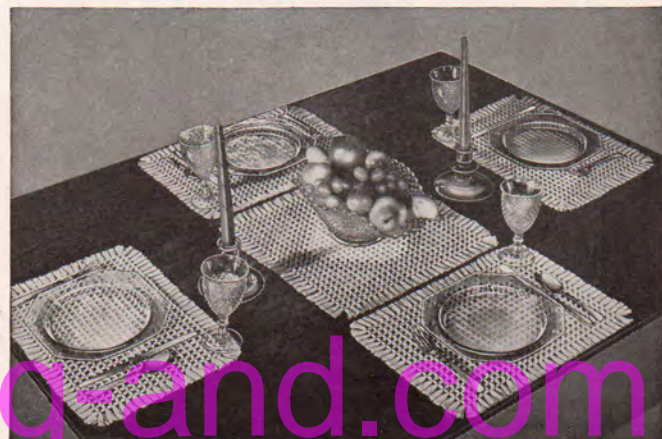
**3 Piece Chair Set—Kit No. 3631**  
A "Waffle-Weave" chair set will lend a smart touch to your Living Room. Unbleached Crochet Cotton to complete and instructions for working included.

*NOTE—Your dealer has or can procure for you any of the "Waffle-Weave" kits shown here.*



**3 Piece Doily Set for Living Room Mats or Breakfast Nook—Kit No. 3630**

Consists of 1 mat size 12 x 17" and 2 mats each size 9 x 12". Includes Boilproof Beige, Black and Orange Cotton to complete and instructions.



**5 Piece Luncheon Set—Kit No. 3627**

Consists of 1 mat size 17 x 17" and 4 place doilies each 12 x 17". Includes Unbleached Crochet Cotton for background and Boilproof Orange and Green Cotton for trim, and instructions for working.



Nº 3634



# AFFLEWEAVE

## CREATIONS

EASILY AND QUICKLY MADE WITH BUCILLA CROCHET AND KNITTING COTTON

<http://knitting-and.com>



VOLUME 100



(in U.S.A.)