

Taking Account of Fisheries or Closing the Net?

Dale Rodmell
National Federation of Fishermen's
Organisations

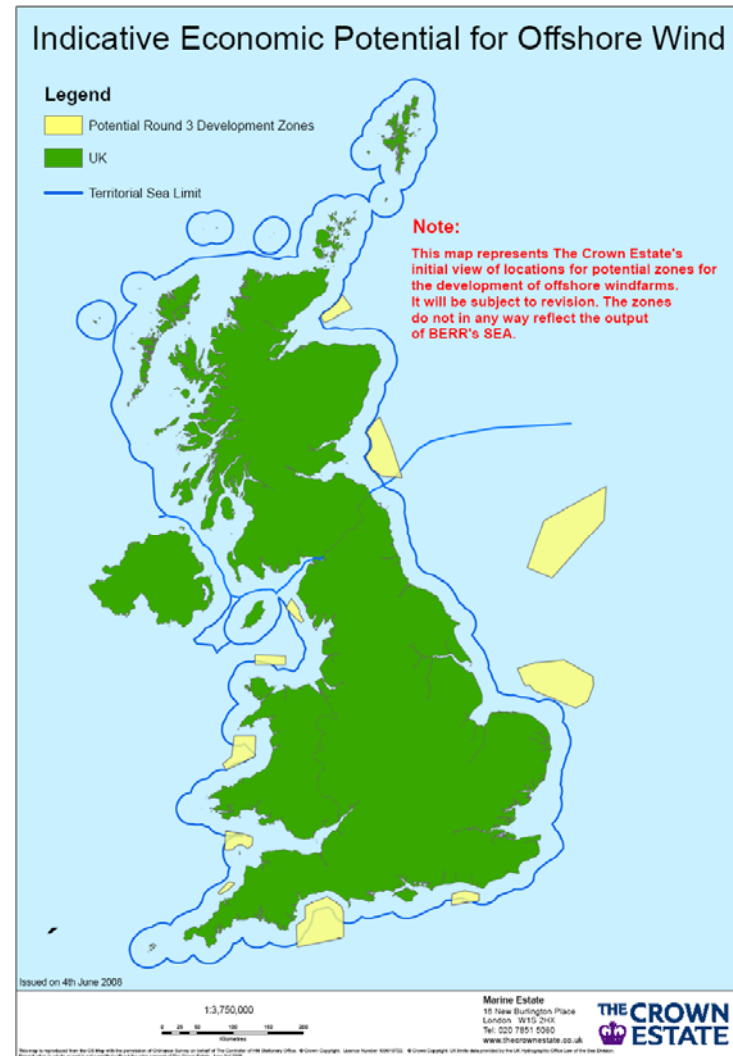
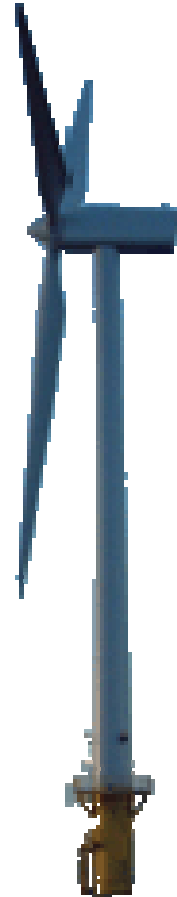
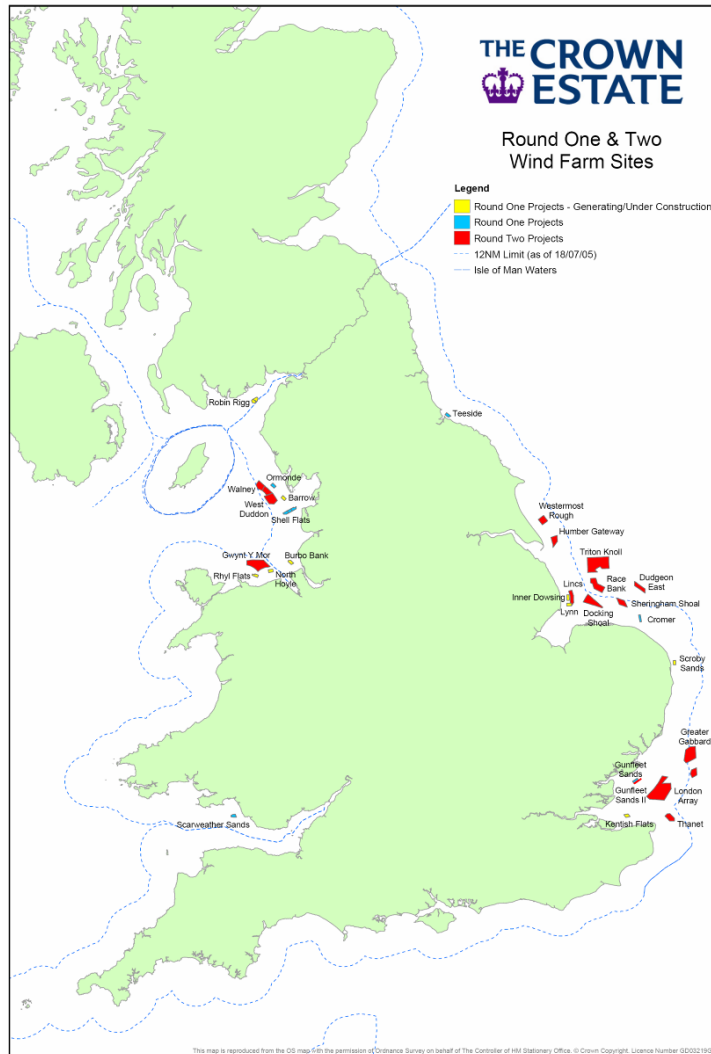


Integrated Marine Policy

- Key aim: Balancing conflicting interests to promote co-existence.
- Issue: Degree to which fishing sensitivities are recognised in the planning process

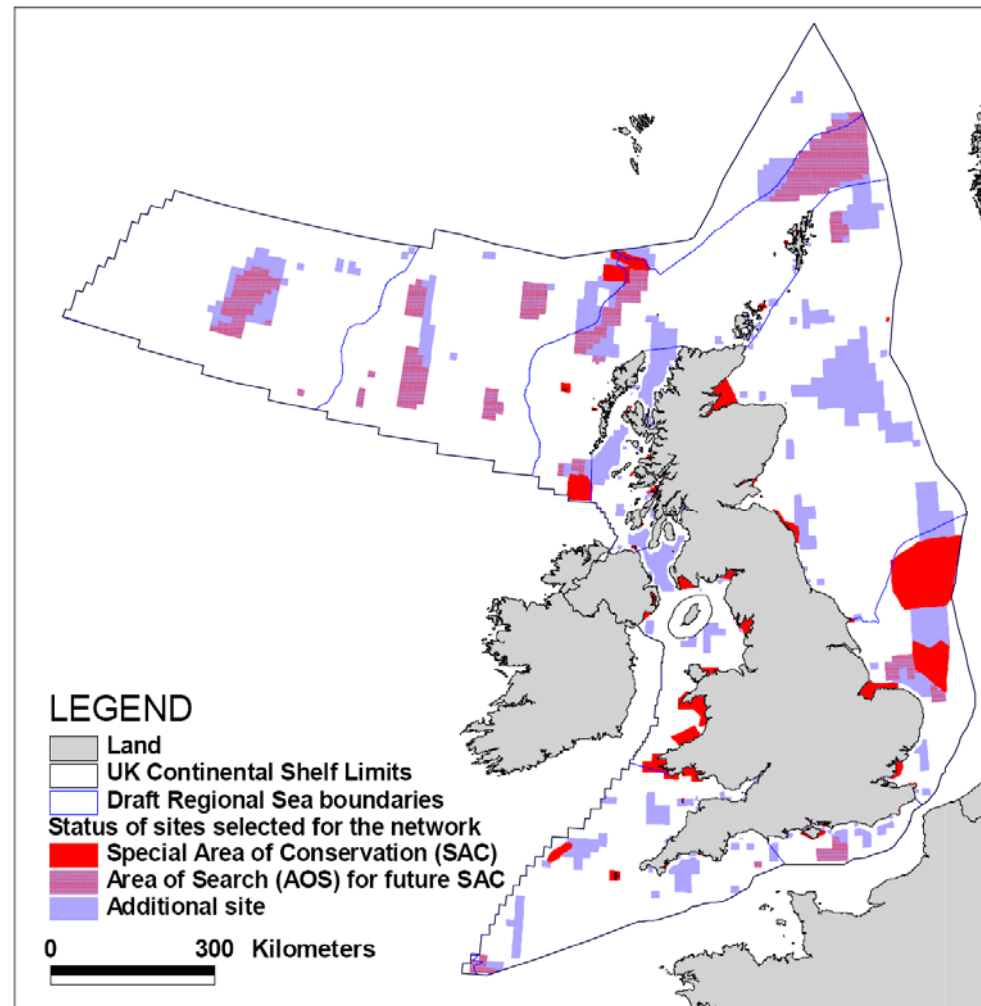


Offshore Renewable Energy



Marine Protected Area Planning

- No / limited socio-economic considerations in designation



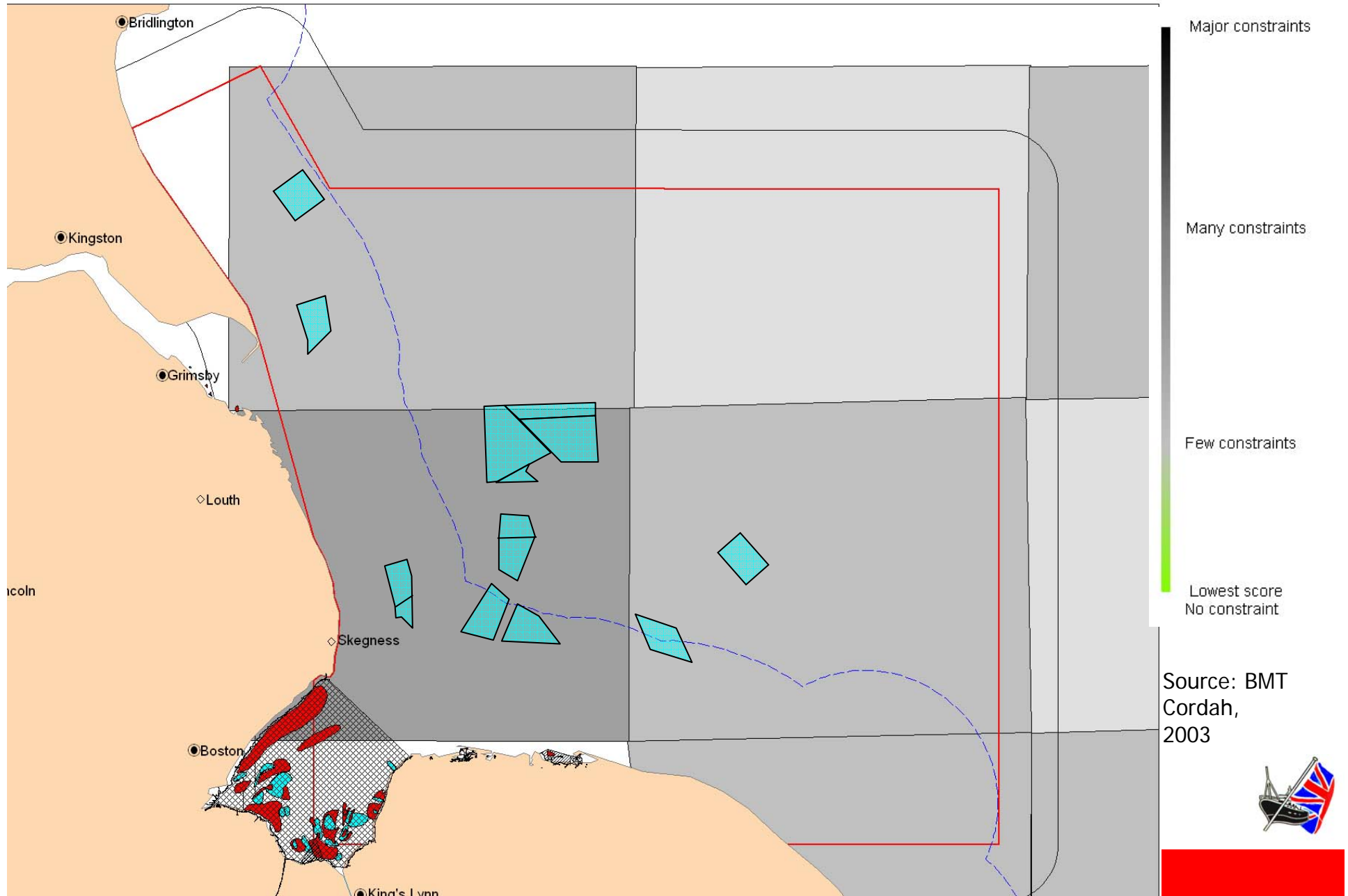
When Planning is Blind to Fisheries

- Fisheries displacement.
- Blind to impacts upon coastal communities.
- Perverse conservation outcomes?

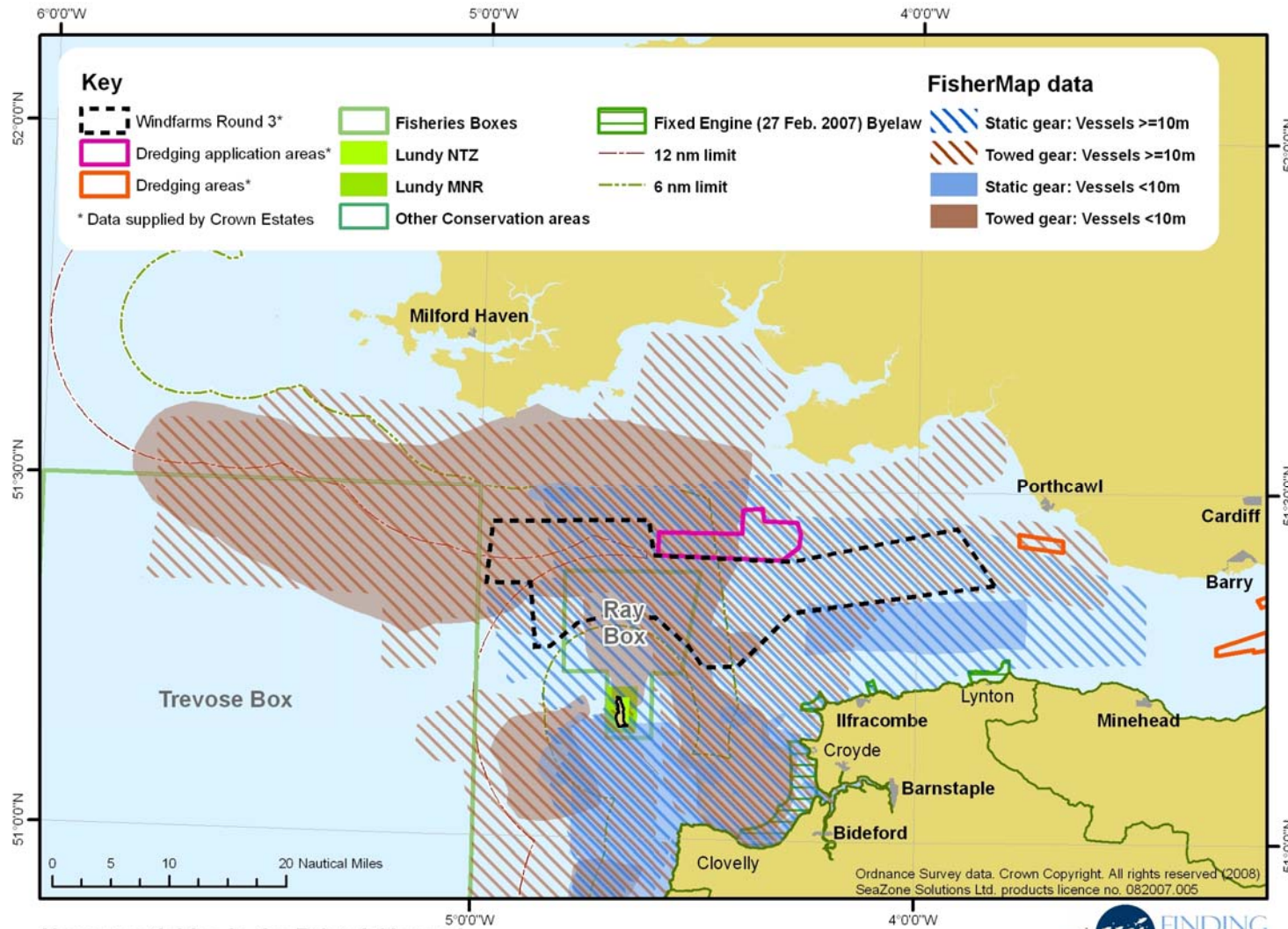


National Federation of Fishermen's Organisations

Sum of ranked score ecological and visual constraint and socio-economic factors



Fisheries Mapping



Human activities in the Bristol Channel



Conclusions

- Integrated marine policy welcome but risk of flawed planning processes that fail to recognise fisheries.
- Fisheries more difficult to define than most.
- Fisheries mapping – prerequisite to successful spatial planning.



Thank you

Web: www.nffo.org.uk

Email: nffo@nffo.org.uk

Tel: 01904 635430