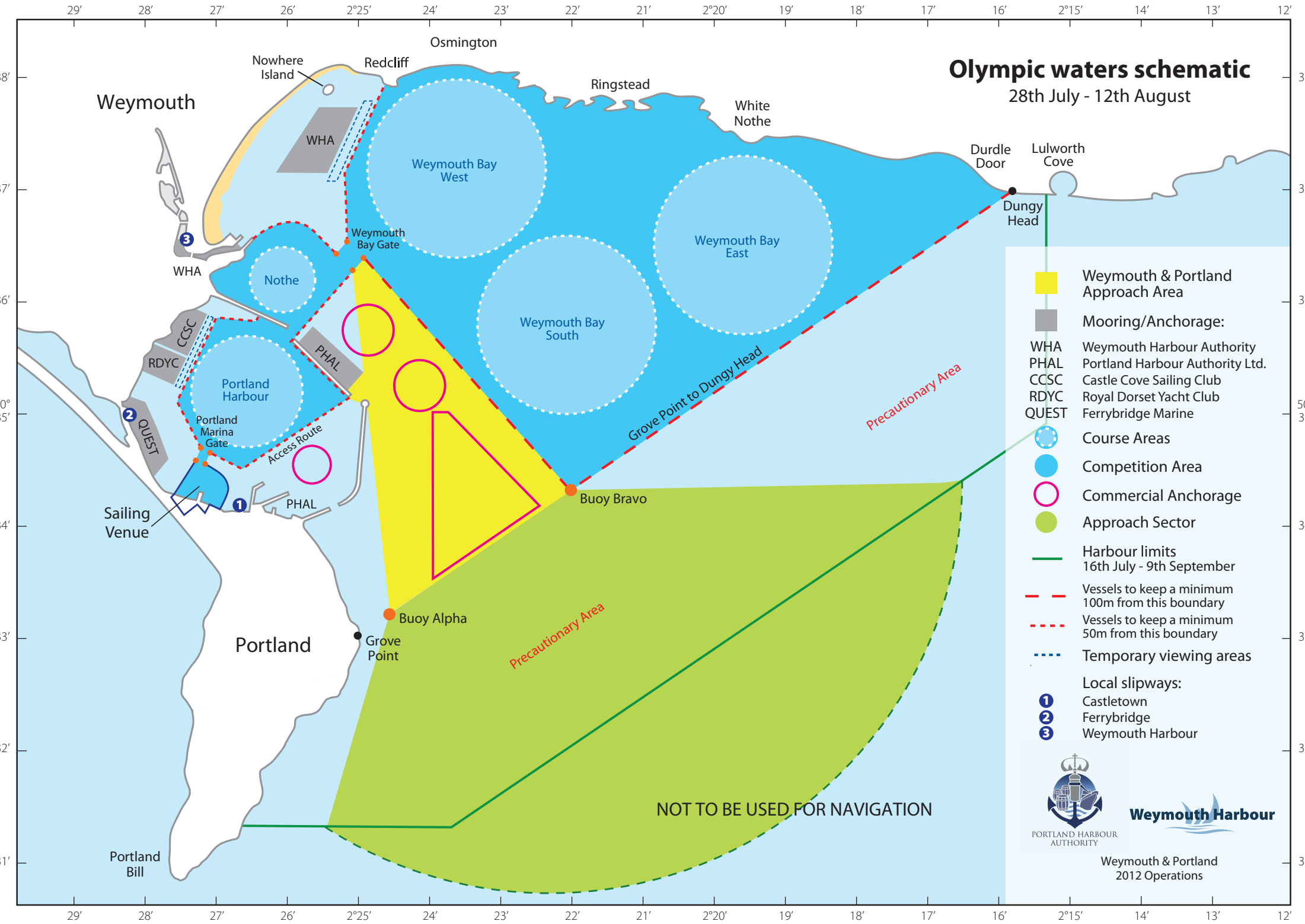


Olympic waters schematic

28th July - 12th August



- Weymouth & Portland Approach Area
- Mooring/Anchorage:
- WHA Weymouth Harbour Authority
- PHAL Portland Harbour Authority Ltd.
- CCSC Castle Cove Sailing Club
- RDYC Royal Dorset Yacht Club
- QUEST Ferrybridge Marine

- Course Areas
- Competition Area
- Commercial Anchorage
- Approach Sector
- Harbour limits
16th July - 9th September
- Vessels to keep a minimum
100m from this boundary
- Vessels to keep a minimum
50m from this boundary
- Temporary viewing areas

- Local slipways:
- 1 Castletown
 - 2 Ferrybridge
 - 3 Weymouth Harbour



Weymouth Harbour
PORTLAND HARBOUR AUTHORITY

Weymouth & Portland
2012 Operations

NOT TO BE USED FOR NAVIGATION