



# IXL and UK Schools

A partnership for personalised learning  
& data-driven decision making



# IXL and UK Schools

## A partnership in personalised learning

At IXL Learning, our goal is to create a partnership not only with your school, but with educators and senior leadership teams that help shape a student's learning journey every day.

IXL gives you everything you need to make a bigger, positive impact on learning across your school, academy, or college. Through an easy-to-use, all-inclusive platform, IXL provides thousands of curriculum and instructional resources, actionable analytics for data-driven decision making, and a state-of-the-art assessment suite. In addition to helping your schools and students succeed academically, IXL can even uncover hidden obstacles to learning, increase teacher engagement, develop students' intrinsic motivation to learn, get parents more involved, and more.

With IXL, it's surprisingly simple to get started with our teaching and learning tools. And whether it's for student report cards, progress tracking, and more, you'll have better ways to facilitate success for everyone in your school's community.

We look forward to working with you!





## 2022-2023 IXL Impact in the UK

Skills mastered  
**5,369,775**

Skills proficient  
**5,777,175**

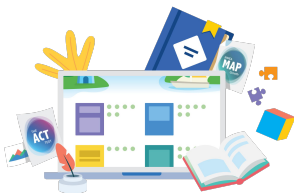
Questions answered  
**208,537,295**



**146,466**  
students



**7,460**  
teachers



IXL is aligned to the Programme of Study in both Maths and English, and prepares students for the rigor of assessments.



Studies in more than 70,000 schools show that IXL schools outperform non-IXL schools on state assessments.

### Notes from the classroom

A significant number of our 400+ children use it weekly for at least 30 minutes. Quite a few do 2 or 3 hours a week. Teachers report that those regularly using the product are making better progress than expected in their assessments, and they can then go onto more challenging concepts.

**Peter Hillier**, headteacher, Nottingham, England

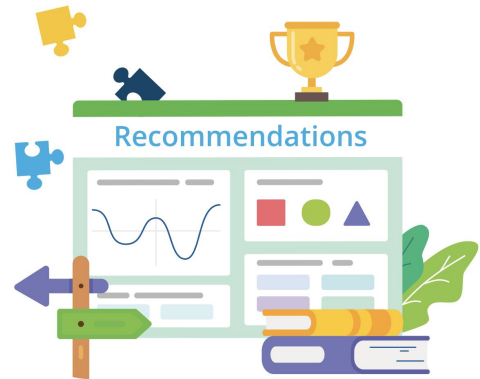
Learn more about how schools across the UK are helping students accelerate learning with IXL! Visit [uk.ixl.com/membership](https://uk.ixl.com/membership)

# Strengthen differentiation and full inclusion

Within IXL's adaptive, engaging learning experience, students are always challenged at the right level, empowered to take ownership of their learning, and work towards mastery at their own pace.

## Active learning

Built on the principle of active learning, IXL helps students learn through practice and exploration. IXL then uses insights from student work to create precise, timely, and deeply personalised [skill recommendations](#) for every learner.



## In-the-moment support

Students on IXL are always provided with immediate feedback and detailed question-specific explanations. They can also see the exact supporting skills that will scaffold their knowledge and solidify foundational concepts.



## Build a confident learner

IXL's focus on personalised learning helps develop strong, confident students. When IXL is used consistently, not only do students see growth on paper (or computer), but they are inspired to continue on that path through graduation.

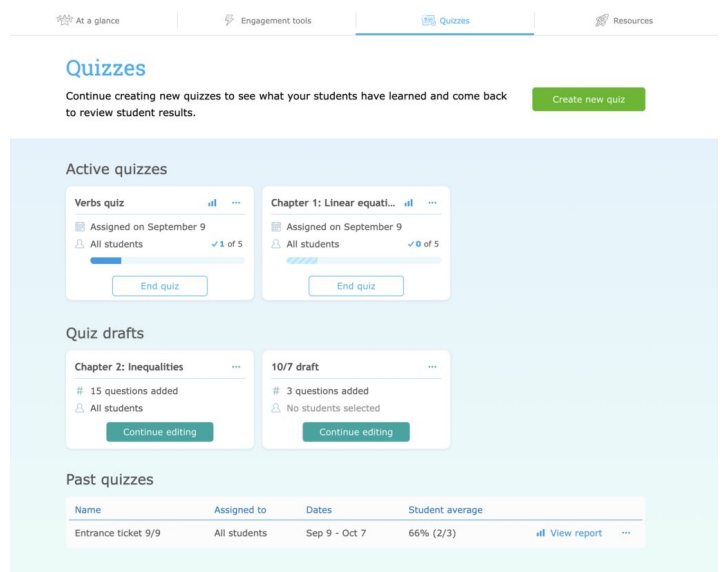
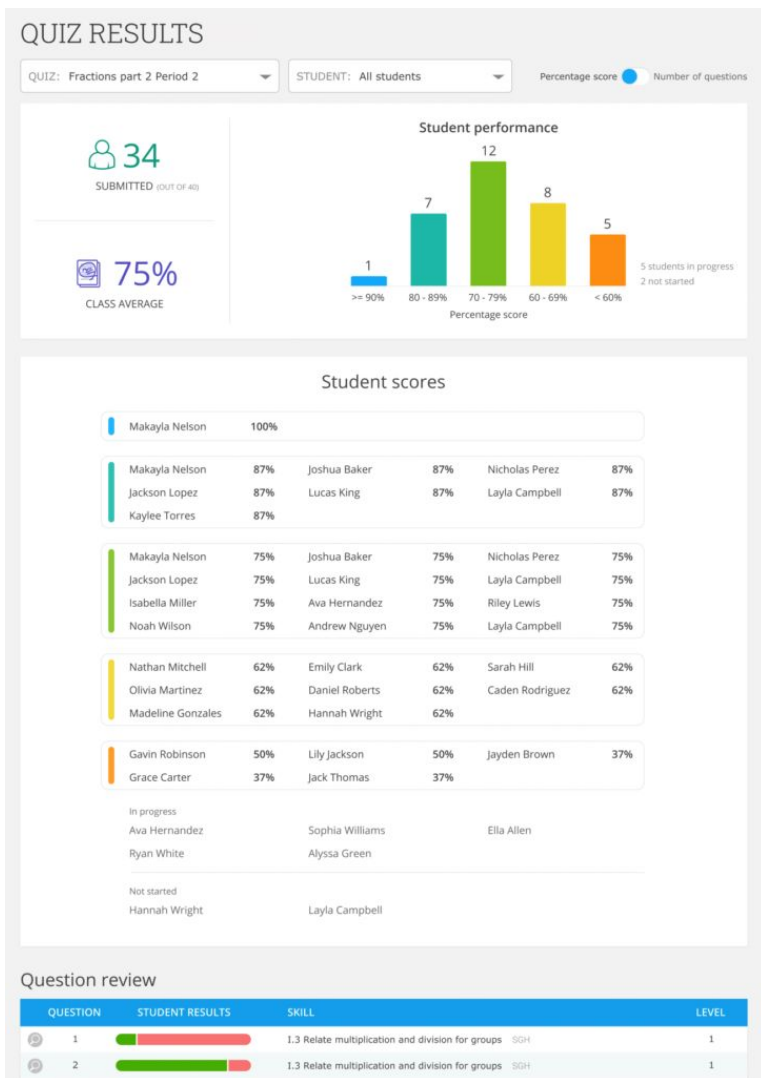




# Make standards based report cards a breeze

## Literacy for all students, in all content areas

Our custom-built skill plans for the National curriculum covers maths and English and can help educators in the UK with grading. Skill plans can be used to make [IXL quizzes](#), which are both **shareable** and **auto-marked**. Our quizzes can also generate reports that include targeted intervention groupings and question breakdowns to easily plan for intervention.



# IXL: The inclusion solution

IXL is a learning solution for **all**, providing a flexible platform that meets students where they are at, encourages growth, and supplies data that will help inform and shape instruction throughout UK schools.

## Keep students in the classrooms

With IXL's open-access R-13 curriculum, students are given interactive and adaptive learning modules that provides individualised instruction that propels growth. There's no need to pull students out of the classroom for intervention while using IXL thanks to tools like the Real-Time Diagnostic and IXL Analytics.



## Strategically scaffolded

IXL skills are crafted to introduce new concepts at the right time and in the perfect order, like **building blocks** that guide students toward fluency. We break down complex skills into distinct levels, and as a student completes each level, he or she moves on to a more challenging level. This progression allows every student to build up knowledge from easier to more rigorous content and master the skill at his or her own pace.

## IXL and Special Educational Needs

Using IXL to support SEN is as easy as 1, 2, 3! Use the IXL Real-Time Diagnostic to pinpoint year-group proficiencies and auto-create personalised Student Action Plans to give each student what they need to close gaps. The Student Action Plan constantly updates as students grow and achieve!

# Data-Driven Decision Making in Every School

Make the most of whole-class or small-group instruction with fun, engaging activities, while assessing students' progress and determining trouble spots in real time.

## Group Jam

In [Group Jam](#), All students will see the same IXL question at the same time, creating new opportunities for classroom collaboration. Teachers can gauge their entire class's understanding of the topic in real time, and make informed decisions on the best next steps to take.

Group Jam - V.12 Interpret frequency charts: one-step problems IXL

Question 1: 12 students are working on this question. Add or remove students

Carissa Hoffman answered: 9 more trails

Ver en español

1) Snowy Ridge ski resort has a map of all the trails on the mountain. Next to the map, they list the trail difficulty levels in a frequency chart.

Difficulty level	Frequency
beginner	15
intermediate	21
advanced	24
expert	19

2) How many more advanced trails are there than beginner trails?

more trails

## Live Classroom

There's a reason [Live Classroom](#) is a teacher favourite: it allows you to be everywhere at once in the classroom! You'll get a live look at class progress and be alerted when a student is struggling and in need of individualised support.

LIVE CLASSROOM

12 TOTAL STUDENTS | 2 STUDENTS IDLE | 2 STUDENTS MAY NEED HELP | 2 SKILLS IN PRACTICE | 99 QUESTIONS PRACTICED (PAST HOUR)

Student activity wall

Student	Questions Answered	Score
Steve Johnson	8	37
Caroline Jens	11	23
George Smith	15	24
Jerry Williams	2	10
Cameron Dunn	12	76
Jennifer Jackson	15	24
Jeff Williams	9	4
Geoff Ramsey	14	0
Jake Evans	11	30
Carl Clark	20	41
John Thomas	14	4
Jack Smith	15	41

## Student Action Plans

IXL's [Diagnostic Action Plans](#) are personalised to each learner. You can use these plans to understand what students already know and reveal the exact skills they should work on next to grow their knowledge. The best part? They auto-update as students grow and reach proficiency level.

IXL Diagnostic Action Plan

Your most recent levels and recommendations as of 20 October 2021

Student: Stephen Scott

The IXL Real-Time Diagnostic shows you what you know and what you're ready to learn next. Work on your personalised skill recommendations until you reach excellence (90+). Visit the Real-Time Diagnostic often to see how your stats change and to get new recommendations!

Have questions about the Real-Time Diagnostic? Visit [uk.ixl.com/diagnostic-help](https://uk.ixl.com/diagnostic-help).

Overall maths level: 760

Maths strand levels and top recommended skills

Number & Place Value: 740

2 recommended skills

- 7-A.1 Place values in whole numbers >>
- 7-M.5 Opposite integers >>

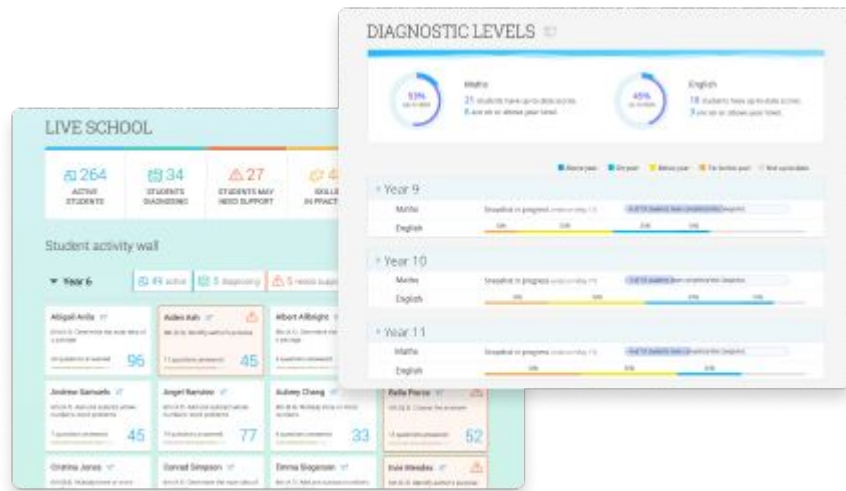


# Data-Driven Decision Making for MATs

Make the most of whole-class or small-group instruction with fun, engaging activities, while assessing students' progress and determine trouble spots in real time.

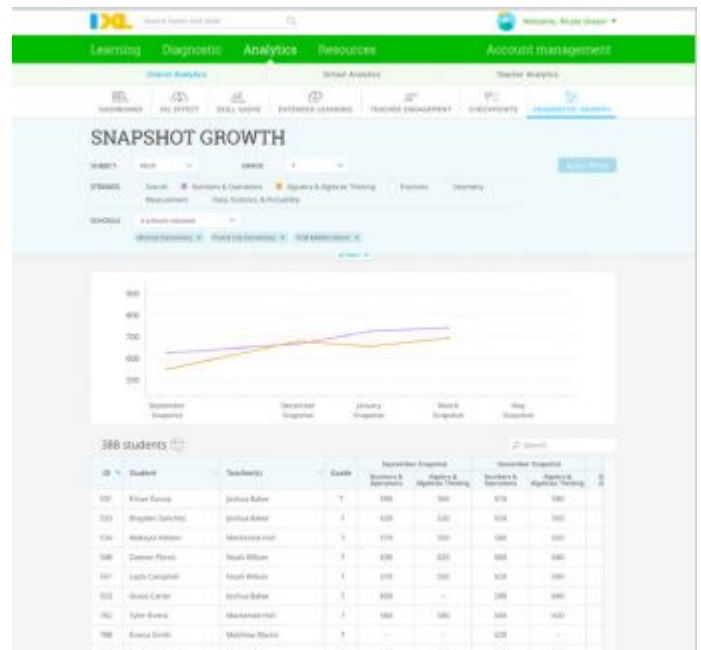
## Trust Analytics

IXL's real-time insights help you see how your trust is tracking against your goals for performance and growth. Trust [Analytics](#) helps you answer questions such as, "Are students demonstrating adequate progress at this point in the year?" With this information, you can identify where support is needed and lead improvement efforts across your schools.



## Increased Power and Flexibility

We support standard demographic data fields, as well as custom demographic fields group by level, school, or any registered demographic category allowing school leaders to further dig into their Diagnostic data and better plan for their trust.



Gender	All	Race	All	Hispanic ethnic...	All
ELL status	All	FRL status	All	IEP status	All
Home language	All	Afterschool pro...	All	Handedness	All

# Family engagement and communication

Because IXL can go wherever your students go, the learning doesn't have to stop once they leave the classroom! Getting parents involved is one great way to keep the IXL momentum going. They can join in on the fun by checking in on their students' progress, supporting their growth, and keeping them motivated to use IXL at home.

## Educate parents on the power of IXL

**Parent handout:** When educating parents about IXL, there's no better place to start than the [parent handout](#). This sheet illustrates the core components of IXL that make it a great tool for learning, offers simple ways to use IXL at home, and breaks down how the SmartScore works.

**Parent video:** The [parent guide video](#) shows families how their child learns while using IXL. The video begins with an overview of an IXL skill and introduces the adaptive capabilities of the SmartScore and personalised Recommendations wall. It also teaches parents how to take a peek at their child's progress with analytics and the Real-Time Diagnostic.

**Diagnostic and analytics guides:** Ensure parents read our guides for two of the most important features on the platform—the [Real-Time Diagnostic](#) and [IXL Analytics](#). These easy-to-read one-pagers show parents how IXL makes understanding their child's progress simple.

**Add a parent email to your register:** When a parent's email is included on your register, they will receive link sto their child's certificates through email, keeping them in the loop and in on the celebrations.



# IXL and Rosetta Stone: Better together

Did you know that Rosetta Stone is a part of the IXL Learning family of brands? Your teachers and students can benefit from a single solution for personalised language learning by bundling Rosetta Stone with IXL!

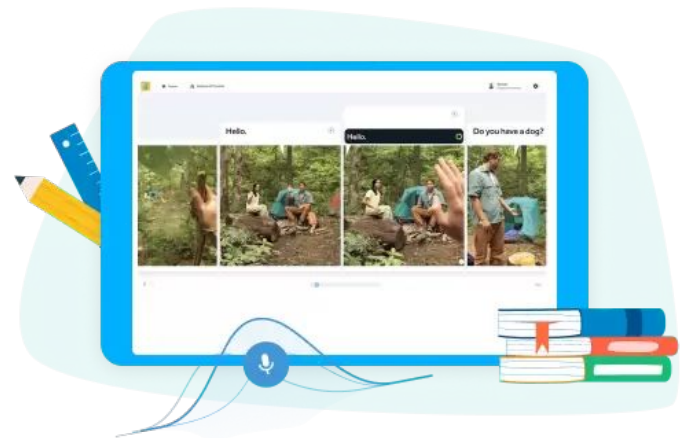
## IXL and Rosetta Stone

- Support ELLs at every stage
- Flexibility for students and educators
- Simple and convenient implementation



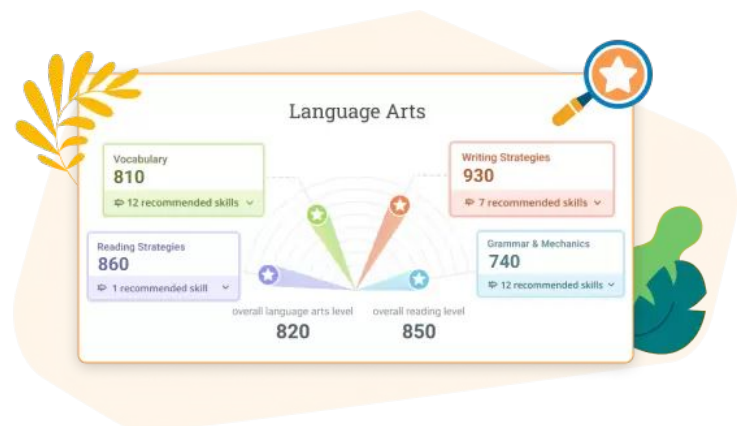
## Rosetta Stone for Schools

- Accelerate English acquisition and retention
- Engage in all four domains of language (reading, writing speaking, and listening)
- Accommodate varying degrees of English proficiency



## IXL English Language Acquisition

- Reinforce Rosetta Stone lessons
- Assess year-level proficiency
- Personalise learning with IXL action plans



# Research: Students who use IXL achieve more

Studies on 70,000 schools show that IXL schools outperform non-IXL schools on standardised assessments—and these positive impacts hold true for a variety of student populations and implementation types.

## IXL leads to improved outcomes for all students

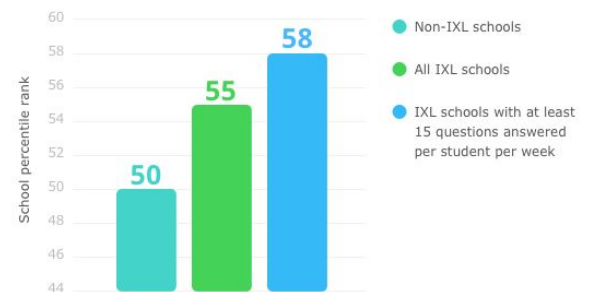
The positive benefits of IXL cut across a broad range of student groups and school types, with ESL students, SEN students, and EAL students experiencing similar or even greater gains.



## Research on IXL is rigorously designed and reviewed

IXL's research has shown that schools where students answer at least 15 questions per week outperform all the others, with even greater gains when student learning is supported with both IXL maths and IXL English.

The IXL Effect: Weekly usage



## IXL's curriculum and platform are research-based

IXL's product is grounded in best practices from [learning science research](#). Our personalised learning platform incorporates well-established methods for learning and teaching, ensuring that students have the right curriculum, guidance, and motivation to achieve lasting learning.

