

# Swan View's News

Summer 2016



Swan View Coalition  
3165 Foothill Road  
Kalispell, MT 59901

*"Nature and human nature on the same path."*

[www.swanview.org](http://www.swanview.org)  
[www.swanrange.org](http://www.swanrange.org)  
[swanview@swanview.org](mailto:swanview@swanview.org)

## *Special Flathead Forest Plan Action Issue!*

As promised in our last newsletter, here is our Summer newsletter to help you understand and comment on proposed revisions to the Flathead Forest Plan! We'll boil 2,000 pages of Forest Service documents down to just a few and provide you with ideas for **your important comments due October 3!**

Be encouraged because your prior comments and support of our Citizen reVision alternative got it evaluated in the Draft Environmental Impact Statement! **We show you how and where to comment on page 2 and we provide you a sample letter on page 3!**

It's not every day that a DEIS makes clear that reducing a Forest's logging program and protecting all roadless lands as recommended Wilderness saves the American taxpayer \$2.2 million! And **your letters and petitions landed consideration of finally closing the off-road ATV trails in Krause Basin to motorized use!**

But getting our concerns discussed in a DEIS is far from getting the agency to do the right thing - so **your letters are needed now more than ever!**

You'll notice we've dropped our newsletter format from pages 3-5 in order to provide you a form letter that you can photocopy or print to mail in and a couple DEIS maps, though at small scale. We provide you links to the larger-size color maps and documents on page 2.



Also as promised, we testified for grizzly bear habitat in Missoula on July 7, on behalf of 15 groups and individuals from across the nation (page 6). Sadly, and only days earlier, a speeding mountain biker was killed when he ran into a bear on a narrow

trail on the Flathead National Forest. Hopefully, this will lead to renewed attention to long-standing warnings about travelling fast in bear country (page 6).

We are working overtime! **Please support our work now and Cinnabar Foundation will match the first \$2,000 in donations we receive (page 7)!**

*Keith*

## *Support a Healthy reVision of the Flathead Forest Plan!*

The Flathead NF has presented four alternatives ways to manage the Forest under a Revised Plan. **Your comments on what parts of those alternatives you want to see in the Revised Plan are due October 3!**

Your previous comments were successful in getting our Citizen reVision included in the Draft Environmental Impact Statement (DEIS), largely as Alt. C while keeping important parts of the current Forest Plan (Alt. A). Your comments are essential to see that the Revised Plan chosen next year favors wilderness, fish, wildlife, and quiet, non-competitive recreation!

Alt. A would continue to implement the current Forest Plan and its grizzly bear habitat management program known as Amendment 19, along with important standards for maintaining fish habitat. But it recommends only 4% of the Forest for additional Wilderness.

Alts. B and D retain aggressive timber sale programs. Alt. B recommends 8% of the Forest for additional Wilderness but would allow motorized uses and mountain bikes there until Congress designates it. Alt. D recommends no additional Wilderness

Alt. C recommends nearly all roadless areas as additional Wilderness (21% of the Forest) and immediately prohibits motorized and mountain bike use there. It reduces the timber sale program, which saves \$2.2 million per year in taxpayer subsidy for timber sales. The DEIS says timber jobs comprise only 2% of private employment in Flathead County, while 20% are in travel and tourism. The DEIS also finds that 70% of Americans want more federal land designated Wilderness and 96% "enjoy know-

ing that future generations will be able to visit and experience wilderness areas."

Alts. B, C and D, however, are predicated on removing Endangered Species Act protections from grizzly bear and abandoning the current A19 grizzly habitat management program! Don't fall for this false choice among alternatives. Alt. C is hands-down the best Alt. for fish and wildlife habitat connectivity and, when combined with the best of Alt. A, is unbeatable in providing habitat security for grizzly bears, other wildlife and fish - including in Krause Basin!

**The letter on the following page summarizes the above in a form you can use for your comments.** Photocopy or print it and mail it in - even better if you add notes about your favorite areas on the Forest! A copy of the letter with endnotes that point you to relevant pages

in the DEIS is at [www.swanview.org/reports/FFPlan\\_Letter\\_Footnotes.pdf](http://www.swanview.org/reports/FFPlan_Letter_Footnotes.pdf) and the Forest Service documents and maps are at [www.fs.usda.gov/goto/flathead/fpr](http://www.fs.usda.gov/goto/flathead/fpr).

We've included on pages 4 and 5 two maps showing Alt. C's wilderness recommendations forest-wide and for the Swan Crest so you can see how it provides habitat connectivity! You may need larger-scale color versions of the maps, so we've posted them at [www.swanview.org/reports/Map\\_1-03.pdf](http://www.swanview.org/reports/Map_1-03.pdf) and [www.swanview.org/reports/Map\\_1-77.pdf](http://www.swanview.org/reports/Map_1-77.pdf).

**Your comments can also be submitted on-line** by pasting <https://cara.ecosystem-management.org/Public/CommentInput?Project=46286> into your browser. **Please support wilderness, wildlife and your public lands by October 3!**



Flathead National Forest - Att: Plan Revision  
650 Wolfpack Way  
Kalispell, MT 59901

Dear Forest Planning Folks;

I urge you to refine and implement Alternative C, which recommends almost all roadless areas for wilderness designation, but to also finish providing the grizzly bear security promised elsewhere on the Forest under the current Forest Plan (Alternative A). This not only honors past promises you have made to the American public, fish and wildlife, it also recognizes that wilderness is the best protection for wildlands in the face of increasing human populations, mechanized recreation and global temperatures.

By reducing the timber sale program, Alternative C saves taxpayers \$2.2 million per year in habitat-destroying logging subsidies and leaves more carbon stored in trees. This money could instead be spent conducting the ecosystem restoration work promised in the current Forest Plan, largely by decommissioning 520 miles of old logging roads that are still damaging fish and wildlife habitat and by better maintaining the 1,400 miles of roads that would remain open to motor vehicles.

Alt. C would also provide long-promised security in the wildlife-rich Krause Basin by prohibiting ATVs from all but the main Peters Ridge and Strawberry Lake roads. This would contribute to wildlife security promised in the current Forest Plan and honor the promise that the old off-road ATV trails "will NOT" be marked on the ground.

Unfortunately, Alternatives B and D in the DEIS are premised on removing Endangered Species Act protection from grizzly bears, relaxing habitat protections and adding industrial-strength recreation (in part via Focused Recreation Areas including Krause Basin) to industrial-strength logging.

Conscientiously refining and combining Alternatives A and C would continue, rather than abandon, current habitat protection programs federal agencies say are increasing grizzly bear numbers so they can expand beyond the 1% of their former range still occupied. This would be enhanced by providing greater habitat security and connectivity via recommended wilderness, by prohibiting mountain bikes and motor vehicles from recommended wilderness, by prohibiting springtime snowmobiling in areas where it is currently allowed, and by extending protections beyond inadequate recovery zones.

Sincerely,

Name:

Address:

Figure 1-03. Management areas for alternative C forestwide

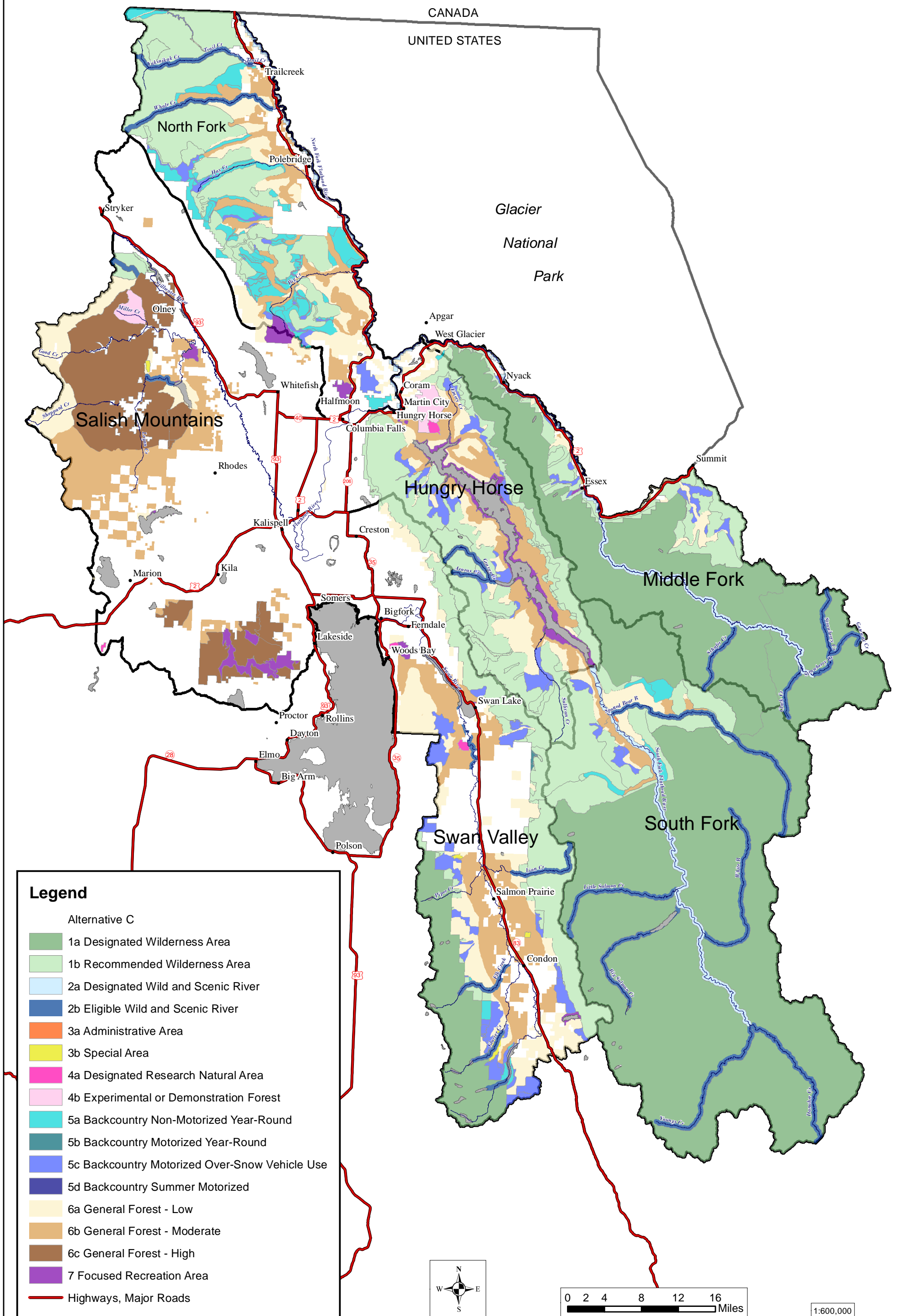
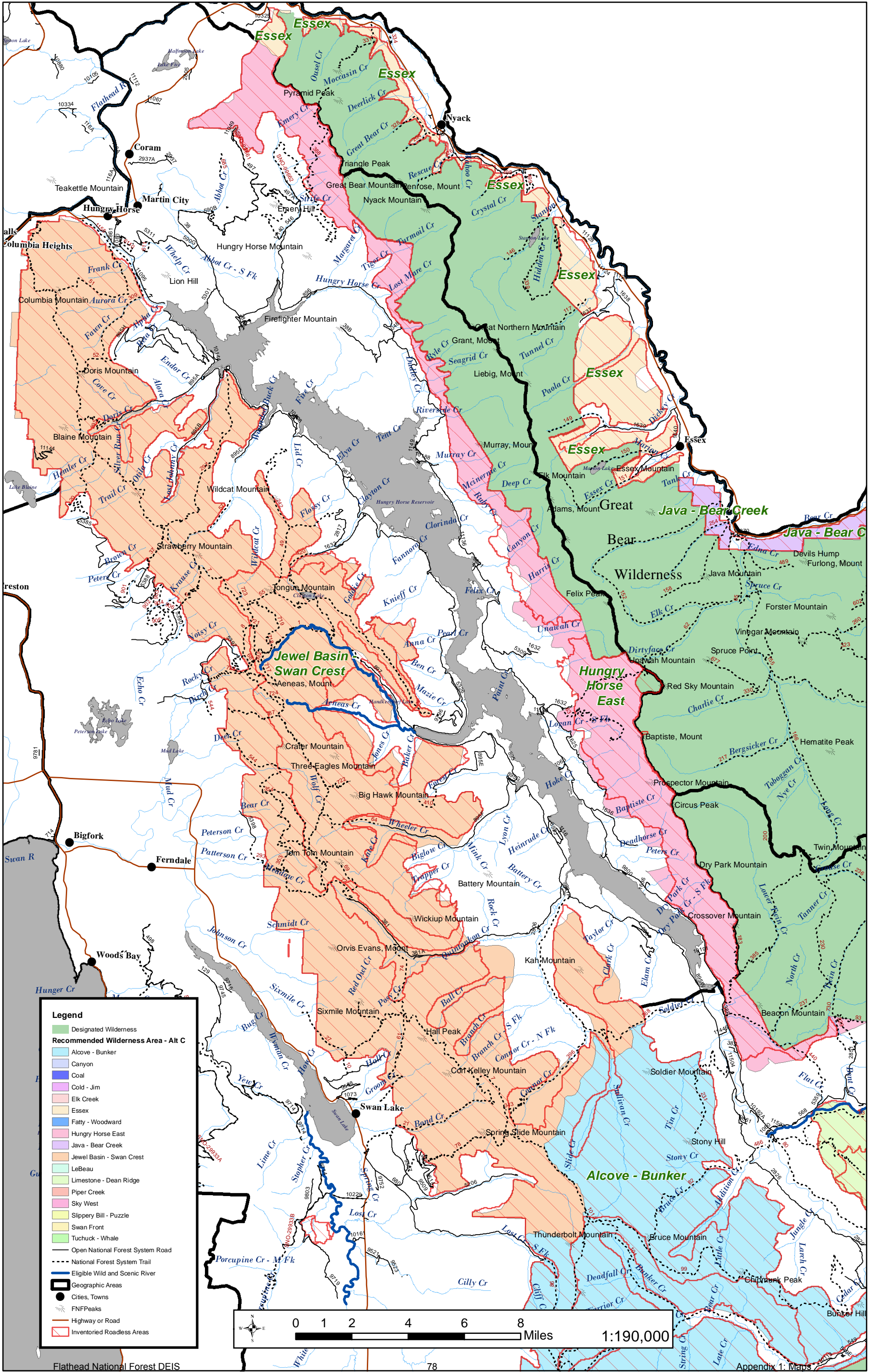




Figure 1-77 Recommended wilderness areas: Jewel Basin-Swan Crest, Hungry Horse East, Essex, Java-Bear Creek, Alcove-Bunker alt C





## *Testifying for Grizzly Bear Habitat Recovery!*

We testified on behalf of our members and 15 other groups and individuals at a July 7 Grizzly Bear Habitat-Based Recovery Criteria Workshop in Missoula. The HBRC workshop was promised by Fish and Wildlife Service in 1997 when we won our lawsuit over the fact that the 1993 Grizzly Bear Recovery Plan was over-reliant on population numbers and contained no HRBC.

FWS is now duplicating its mistakes by proposing HBRC after declaring the Northern Continental Divide Ecosystem (NCDE) grizzly bear population recovered and ready to be removed from Endangered Species Act protection. HBRC are supposed to be criteria against which recovery is measured, not after-the-fact rationalizations of why an arbitrary number of bears magically indicates "recovery!"

The good news is this workshop/hearing got a number of groups reengaged in the NCDE. You can read our testimony and find links to news coverage of the hearing by visiting our web site at [www.swanview.org/articles/blog/swan\\_view\\_testifies\\_at\\_grizzly\\_bear\\_habitat\\_workshop/228](http://www.swanview.org/articles/blog/swan_view_testifies_at_grizzly_bear_habitat_workshop/228).

Many thanks to those of you who sent FWS comments in response to our July member alert! These magnificent animals need continued ESA protection!

## *Speeding Mountain Biker Killed by Bear!*

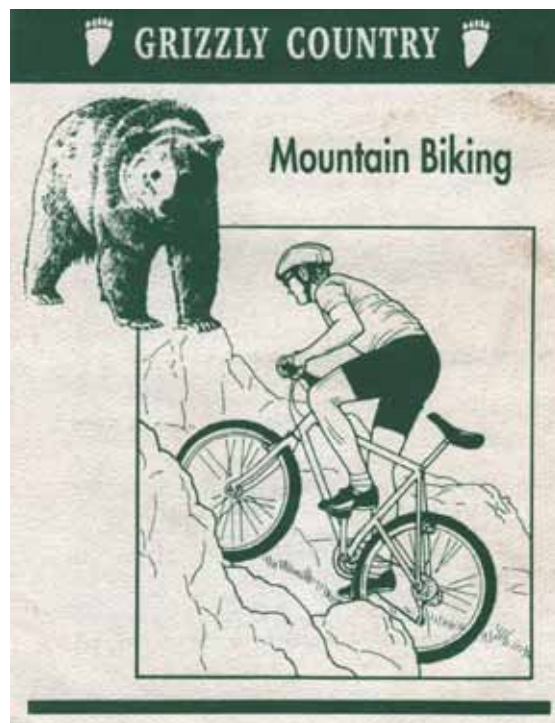
An off-duty Flathead National Forest law enforcement officer was killed June 29 while "riding his mountain bike at a high speed along a narrow [Flathead Forest] trail when he collided with a bear." Brad Treat was much loved in the community and a former Flathead High School track star. ([flatheadbeacon.com/2016/07/02/search-bear-killed-man-near-glacier-park-winds](http://flatheadbeacon.com/2016/07/02/search-bear-killed-man-near-glacier-park-winds))

The Interagency Grizzly Bear Committee warns about the dangers of travelling fast in bear country, advising bikers to "Be especially cautious when traveling fast downhill on a trail with blind curves. Slow down and make noise before rounding such bends." Singletracks.com says "Mountain biking is perhaps the most dangerous of the forms of recreating in bear country."

Agencies have also warned about trail running in bear habitat. Two weeks before

Treat's death, an ultramarathon runner was mauled by a black bear in New Mexico. Officials killed the bear though it was protecting its cubs when surprised by the runner.

Nearly 400,000 people live in NW Montana and millions more visit each year to recreate in bear habitat as bears struggle to avoid conflicts. It is important that people carry bear spray and travel slowly enough to have time to use it if a problem arises!



Interagency Grizzly Bear Committee Brochure

## Your Donations Again Doubled by Cinnabar Foundation!

Cinnabar Foundation has issued us a \$2,000 Challenge Grant - **so take advantage of the fact that the first \$2,000 in donations we receive will be doubled by Cinnabar!**

We rely in large part on member donations to fund our work protecting habitat for fish, wildlife and people. You can help us broaden our membership by giving Gift Memberships at \$25 each, either on-line or using the form below! **It's easy to join others in supporting our work:**



1. Send a check to Swan View Coalition at 3165 Foothill Road, Kalispell, MT 59901 - or -
2. Use your credit card securely on-line at [www.swanview.org](http://www.swanview.org) or [www.swanrange.org](http://www.swanrange.org), by clicking on the **Donate Now button** found there (or above)!

**Network for Good** handles your transaction securely for us and informs us immediately via email of your donation by credit card. You can also choose to give monthly, quarterly or yearly there to make it easier or more affordable (or change your mind anytime)! If you have other info you want to get to us, such as Gift Membership info, simply email it to [keith@swanview.org](mailto:keith@swanview.org) or mail it to the address in #1, above.



If there is pink on your mailing label, it means you haven't donated in nearly a year or more. Please make a donation so we can keep sending you our newsletter and continue our work!

- Here's \$25 to cover my minimum dues, newsletters, alerts, and Swan Ranger Reports.
- Here's \$50 to help restore a bit of peace and quiet to America's public lands.
- Here's \$100 to help keep forest roads from ending up in America's bull trout streams.
- Here's \$500 to help secure grizzly, lynx and wolverine habitat for future generations.
- Here's \$\_\_\_\_\_ to help save the world, one mountain range and one river at a time!
- Here's \$\_\_\_\_\_ for \_\_\_\_\_ Gift Memberships at a minimum of \$25 each. I've included each recipient's name, mailing address, email address, and my greeting on separate paper.
- As a gift of appreciation for my donation, please send me  the Swan/Flathead history booklet "The Lineage of Chief Aeneas: A History of People and Place" and/or  a Swan Ranger patch (circle "hang-loop" or "sew-on").
- Save paper! Email my newsletters to \_\_\_\_\_

NAME: \_\_\_\_\_

ADDRESS: \_\_\_\_\_

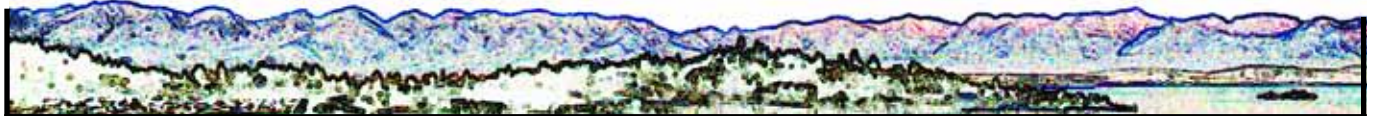
CITY, STATE, ZIP: \_\_\_\_\_

Swan View Coalition, Inc.  
3165 Foothill Road  
Kalispell, MT 59901

Printed on Recycled Paper

# Swan View's News

Summer 2016



## *Special Flathead Forest Plan Action Issue!*

Executive Summary	page 1
Support a Healthy reVision of the Flathead Forest Plan!	page 2
A Sample Form Letter for You to Use or Adapt!	page 3
Map Showing How Protecting Roadless Lands Connects Habitat!	page 4
Map With a Closer Look at the Swan Range!	page 5
Protecting Grizzly Bear Habitat and Respecting Their Presence!	page 6
<u><a href="#">Your Financial Support will be Doubled by Cinnabar Foundation!</a></u>	page 7