

# SITE SAFETY PLAN FOR DEMOLITION OPERATIONS AT 270 PARK AVE, MANHATTAN, NY

AMENDMENT #18

PHASE 1.1  
PHASE 1.2

JOB NO. (SEE BELOW)  
JOB NO. 123377782

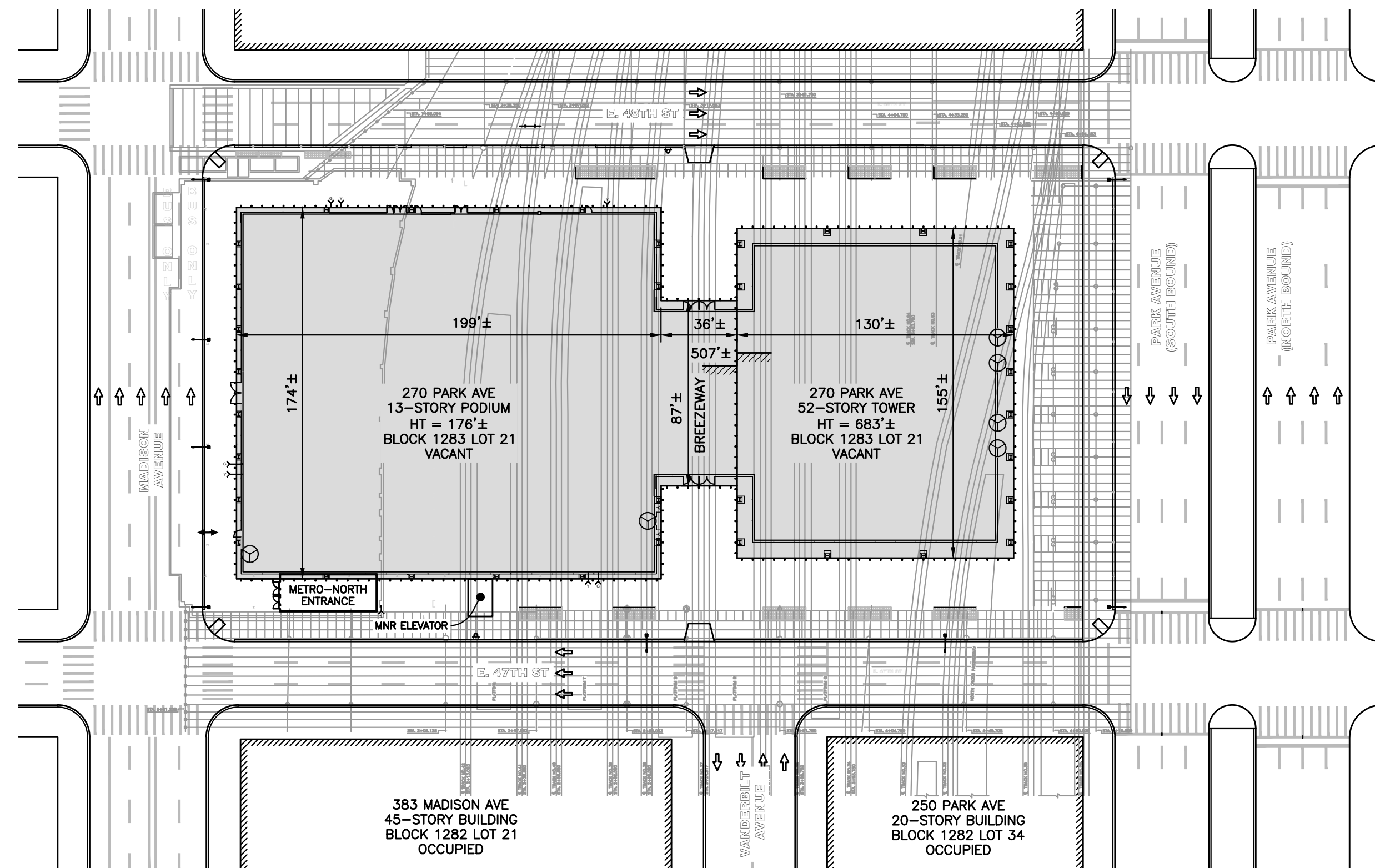
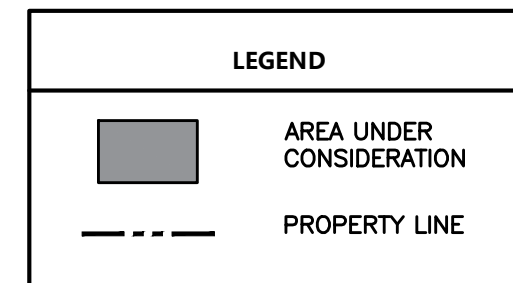
PHASE 2.1  
PHASE 2.2  
PHASE 2.3  
PHASE 2.4  
PHASE 2.5

JOB NO. 121204703  
JOB NO. 121204785  
JOB NO. (SEE BELOW)  
JOB NO. 123656640  
JOB NO. (SEE BELOW)

← AMENDMENT TO THIS APPLICATION

PHASE 3.1

JOB NO. 140939992



KEY PLAN  
Scale: 1" = 50'



**PHASE 1 :**

- PHASE 1.1 NON-STRUCTURAL INTERIOR DEMOLITION AT THE 41ST AND 29TH FLOORS.  
NON-STRUCTURAL INTERIOR DEMOLITION FOR REMAINDER OF FLOORS IN TOWER AND PODIUM BUILDINGS. INCLUDES FLOORS 1 TO 12, 15 TO 28, 30 TO 40, AND 42 TO 50.
- PHASE 1.2 DEMOLITION AND REMOVAL OF TWO CONCRETE PLANTERS AND CANOPY AT THE NORTH BREEZEWAY AND DEMOLITION OF WEST PLANTER ON 47TH STREET.  
DEMOLITION AND REMOVAL OF CONCRETE PLANTERS ON THE EAST SIDE OF 47TH ST, 48TH ST AND ALONG PARK AVE.  
DEMOLITION AND REMOVAL OF CONCRETE PLANTER AND CANOPY AT THE SOUTH BREEZEWAY ON 47TH ST.

**PHASE 2 :**

- PHASE 2.1 GLASS REMOVAL ON THE FOUR SIDES OF THE 41ST AND 29TH FLOORS AND STRIP FROM ROOF TO 2ND FLOOR ALONG NORTH AND WEST ELEVATIONS FOR HOIST ACCESS.  
GLASS REMOVAL ON ALL SIDES OF THE TOWER AT THE 16TH FLOOR AND STRIP FROM THE ROOF TO THE 1ST FLOOR ALONG THE NORTH, SOUTH, EAST AND WEST ELEVATIONS.  
GLASS REMOVAL ON ALL SIDES OF THE TOWER AT THE 2ND AND 1ST FLOORS.  
GLASS REMOVAL ON ALL SIDES OF THE PODIUM AND BREEZEWAY FROM ROOF TO THE GROUND FLOOR.  
GLASS REMOVAL AT SELECT LOCATIONS ALONG THE SOUTH ELEVATION OF THE TOWER FOR THE INSTALLATION OF CRANE TIES.
- PHASE 2.2 REMOVAL OF MECHANICAL EQUIPMENT AT TOWER ROOF, PODIUM ROOF, MECHANICAL FLOORS AT 52, 51, 35, 34, 13, 12, 11, CELLAR AND SUB-CELLARS 1 TO 3.  
REMOVAL OF MECHANICAL EQUIPMENT FROM HUNG CEILING (INTERSTITIAL SPACE).  
REMOVAL OF GARAGE RAMP AND LOADING DOCK AT GROUND FLOOR.  
MAKE FLOOR OPENINGS IN THE GROUND FLOOR, CELLAR AND SUB-CELLAR LEVELS FOR NEW B.1 COLUMNS.  
**MAKE FLOOR OPENING IN THE GROUND FLOOR AT GRIDLINES A-B AND 5-8.**
- PHASE 2.3 INSTALLATION OF NEEDLE BEAM, 300 PSF PLATFORM AND SCAFFOLD.
- PHASE 2.4 FULL STRUCTURAL DEMOLITION OF 52-STORY TOWER AND 13-STORY PODIUM BUILDING.
- PHASE 2.5 OVERLAPPING DEMOLITION AND FOUNDATION WORK OPERATIONS.

**PHASE 3 :**

- PHASE 3.1 ERECTION OF STEEL TABLE TOP FOR NEW BUILDING CONSTRUCTION.

**PERMIT LOG :**

<b>PHASE 1.1: INTERIOR DEMOLITION :</b>	
ALT-2 INTERIOR DEMOLITION (FLOORS 29, 41)	1233815999
ALT-2 INTERIOR DEMOLITION (FLOOR 1)	1235100888
ALT-2 INTERIOR DEMOLITION (FLOORS 2 TO 4)	1235100979
ALT-2 INTERIOR DEMOLITION (FLOORS 5 TO 8)	1233869700
ALT-2 INTERIOR DEMOLITION (FLOORS 9 TO 12)	1234159555
ALT-2 INTERIOR DEMOLITION (FLOORS 15 TO 16)	1234146552
ALT-2 INTERIOR DEMOLITION (FLOORS 17 TO 20)	1233869513
ALT-2 INTERIOR DEMOLITION (FLOORS 21 TO 24)	123481179
ALT-2 INTERIOR DEMOLITION (FLOORS 25 TO 28)	1234159537
ALT-2 INTERIOR DEMOLITION (FLOORS 30 TO 32)	1234146443
ALT-2 INTERIOR DEMOLITION (FLOORS 33 TO 36)	123481845
ALT-2 INTERIOR DEMOLITION (FLOORS 37 TO 40)	123479725
ALT-2 INTERIOR DEMOLITION (FLOORS 42 TO 44)	123493460
ALT-2 INTERIOR DEMOLITION (FLOORS 45 TO 48)	123493512
ALT-2 INTERIOR DEMOLITION (FLOORS 49 TO 50)	123415964
<b>HOIST, SIDEWALK SHED, SCAFFOLD, &amp; FENCE :</b>	
ALT-3 WEST HOIST COMPLEX (CARS 1 & 2)	140806894
ALT-3 WEST HOIST COMPLEX (CARS 3 & 4)	140806901
ALT-3 SUSPENDED SCAFFOLD	140809999
ALT-3 ROOF PROTECTION	140809338
ALT-3 CONSTRUCTION FENCE	M00078455
ALT-3 SIDEWALK SHED	M00066485
ALT-3 SIDEWALK SHED	M00091254
ALT-3 SIDEWALK SHED	M00098827
ALT-3 SIDEWALK SHED	M00098832
ALT-3 SIDEWALK SHED (OVER MNR EXIT)	M00127929
ALT-2 HEAVY DUTY PLATFORM (GRD)	140842257
ALT-2 LOADING DOCK (GRD)	123893331
<b>PHASE 2.3: SCAFFOLD INSTALLATION :</b>	
ALT-3 NEEDLE BEAM PLATFORM & SCAFFOLD (TOWER FLOORS 41-53)	M00105137-11-SF
ALT-3 NEEDLE BEAM PLATFORM & SCAFFOLD (TOWER FLOORS 29-41)	M00134730-11-SF
ALT-3 NEEDLE BEAM PLATFORM & SCAFFOLD (TOWER FLOORS 16-29)	M00134735-11-SF
ALT-3 TOWER BASE SCAFFOLD (TOWER FLOORS 1 TO 16)	M00140916
ALT-3 SCAFFOLD ON TOP OF SIDEWALK SHED (PODIUM FLOORS 2-14)	M00133656-11-SF
<b>PREPARATION FOR DEMOLITION :</b>	
ALT-2 WINDOW REMOVAL (FLOORS 41, 29)	121204703
ALT-2 REMOVAL OF HVAC AND MECH. EQ & EQ PERMIT	121204785
ALT-2 STANDPIPE CONVERSION	123892995
ALT-2 TROLLEY BEAM & WINCH	123885901
ALT-2 DEBRIS SHAFT	140850285
ALT-2 DEBRIS SHAFT # 2 EAST	140864223
ALT-2 TOWER DEBRIS CHUTE	PENDING
FULL DEMOLITION	123656640
TEMPORARY ELECTRIC LIGHT & POWER	M00141508-11-EL
TEMPORARY ELECTRIC BUS DUCT RE-FEED	M00141992-11-EL
<b>CRANE NOTIFICATIONS :</b>	
MOBILE CRANE FOR GENERATORS	12019
TOWER CRANE FOR DEMOLITION	17019
MOBILE CRANE FOR FOUNDATION WORK	90219
MOBILE CRANE FOR DEMOLITION	PENDING
<b>PHASE 2.5: FOUNDATION WORK :</b>	
ALT-2 INSTALLATION OF CAISSONS AND PILE CAPS (CEL, SUB)	121189285
ALT-2 FOUNDATION ENHANCEMENTS AT D-1 LINE	121204810
ALT-2 HAND DEMOLITION OF PORTION OF SUB-CELLAR 2	140883836
ALT-2 MECHANICAL DEMOLITION OF PORTION OF SUB-CELLAR 2	121207087
<b>PHASE 3.1: ERECTION OF STEEL TABLE TOP</b>	140939992

No.	DATE	DESCRIPTION	BY
18	12/28/20	REVISED COVER SHEET	KC
17	08/28/20	REVISED COVER SHEET	KC
16	06/16/20	REVISED COVER SHEET	KC
15	06/25/20	REVISED COVER SHEET	KC
14	06/01/20	REVISED COVER SHEET	KC
13	04/20/20	REVISED COVER SHEET	KC
12	03/04/20	REVISED COVER SHEET	KC
11	12/10/19	REVISED COVER SHEET	KC
10	08/30/19	REVISED COVER SHEET	KC
9	11/15/19	REVISED COVER SHEET	KC
8	05/31/19	REVISED COVER SHEET	KC
7	05/14/19	REVISED COVER SHEET	KC
6	04/17/19	REVISED COVER SHEET	KC
5	08/05/19	REVISED COVER SHEET	KC
4	02/15/19	REVISED COVER SHEET	KC
3	01/15/19	REVISED COVER SHEET	KC
2	10/22/18	REVISED COVER SHEET	KC
1	08/24/18	REVISED COVER SHEET	KC

**HOWARD I. SHAPIRO & ASSOCIATES**  
CONSULTING ENGINEERS, P.C.  
266 MERRICK ROAD, SUITE 300, LYNBROOK, N.Y. 11563  
TEL: (516) 791-2600 FAX: (516) 791-5425  
COPYRIGHT DESIGN NOT TO BE LENT, COPIED, OR REPRODUCED IN WHOLE OR IN PART WITHOUT PRIOR WRITTEN CONSENT.

**CIENT**  
NORTHSTAR CONTRACTING GROUP, INC.  
32 WILLIAMS PARKWAY  
EAST HANOVER, NJ 07936

**PROJECT**  
SITE SAFETY PLAN FOR  
DEMOLITION OPERATIONS AT  
270 PARK AVENUE, MANHATTAN, NY

**ZONING INFORMATION**  
BLOCK: 1283  
LOT: 21  
ZONE: C5-3  
ZONING MAP: 8D  
COMMUNITY BOARD: 105  
BIN #: 1035421

PLACE STICKER HERE

EXAMINER'S STAMP HERE

TITLE SHEET

SEARCHED  
INDEXED  
SERIALIZED  
FILED  
APPROVED  
01/06/2021  
CSC SSP

DRAWING BY: KC DATE: 12/28/20  
PROJECT NO: 18211.02.00  
ENGINEER: JS  
SCALE: AS NOTED  
CHK BY: JS  
DWG NO: SSP-001.18  
V: 2018\18211.00.00 | OF 339

		ISSUE			
		07/23/20	08/16/20	09/28/20	12/28/20
		15	16	17	18
STATUS: No. DRAWING LIST :					
18	001 SSP-001.18				
S	002 SSP-002.13				
S	003 SSP-002A.02				
	004 SSP-002B.00				
	005 SSP-003.01				
PHASE 1.1 :					
	006 SSP-101.01				
	007 SSP-102.00				
	008 SSP-103.00				
	009 SSP-104.00				
	011 SSP-105.01				
	012 SSP-106.00				
	013 SSP-107.00				
	014 SSP-108.00				
	015 SSP-109.00				
	016 SSP-110.00				
	017 SSP-111.00				
	018 SSP-112.00				
	019 SSP-113.00				
	020 SSP-114.00				
PHASE 1.2 :					
	021 SSP-121.03				
	022 SSP-122.01				
	023 SSP-123.03				
	024 SSP-123A.00				
	025 SSP-123B.00				
	026 SSP-123C.00				
	027 SSP-124.02				
	028 SSP-125.04				
	029 SSP-126.02				
	030 SSP-127.01				
	031 SSP-128.01				
	032 SSP-129.01				
	033 SSP-130.02				
	034 SSP-131.02				
	035 SSP-132.02				
	036 SSP-133.01				
	037 SSP-134.01				
	038 SSP-135.02				
	039 SSP-136.03				
	040 SSP-137.02				
	041 SSP-138.01				
	042 SSP-139.00				
	043 SSP-140.00				
	044 SSP-141.00				
	045 SSP-142.00				
	046 SSP-143.00				
	047 SSP-144.00				
	048 SSP-145.00				
	049 SSP-146.00				
	050 SSP-147.00				
	051 SSP-148.00				
	052 SSP-149.00				
	053 SSP-150.00				
	054 SSP-151.01				
	055 SSP-152.00				
	056 SSP-153.00				
	057 SSP-154.01				
	058 SSP-154A.00				
	059 SSP-154B.00				
	060 SSP-154C.00				
	061 SSP-154D.00				
PHASE 2.1 :					
	062 SSP-155.01				
	063 SSP-156.01				
	064 SSP-157.01				
	065 SSP-158.01				
	066 SSP-159.00				
	067 SSP-160.00				
	068 SSP-161.00				
	069 SSP-162.00				
	070 SSP-163.00				
	071 SSP-164.00				
	072 SSP-165.00				
	073 SSP-166.00				
	074 SSP-167.00				
	075 SSP-168.00				
	076 SSP-169.00				
	077 SSP-170.00				
	078 SSP-171.00				
	079 SSP-172.00				
	080 SSP-173.00				

		ISSUE			
		07/23/20	08/16/20	09/28/20	12/28/20
		15	16	17	18
STATUS: No. DRAWING LIST :					
PHASE 2.2 :					
	081 SSP-201.02				
	082 SSP-201A.01				
	083 SSP-202.00				
	084 SSP-203.00				
	085 SSP-204.00				
	086 SSP-205.00				
	087 SSP-206.00				
	088 SSP-207.00				
	089 SSP-208.00				
	090 SSP-209.00				
	091 SSP-210.00				
	092 SSP-211.00				
	093 SSP-212.01				
	094 SSP-213.00				
	095 SSP-214.00				
	096 SSP-215.00				
	097 SSP-216.00				
	098 SSP-217.00				
	099 SSP-218.00				
	100 SSP-219.00				
	101 SSP-220.00				
	102 SSP-221.00				
	103 SSP-222.00				
	104 SSP-223.00				
	105 SSP-224.01				
	106 SSP-225.01				
	107 SSP-226.01				
	108 SSP-227.00				
	109 SSP-228.01				
	110 SSP-229.01				
	111 SSP-230.01				
	112 SSP-231.00				
	113 SSP-232.01				
	114 SSP-233.00				
	115 SSP-234.00				
	116 SSP-235.00				
	117 SSP-236.00				
	118 SSP-237.00				
	119 SSP-238.00				
	120 SSP-239.00				
	121 SSP-240A.00				
	122 SSP-240B.00				
	123 SSP-240C.00				
	124 SSP-240D.00				
	125 SSP-241.00				
	126 SSP-242.00				
	127 SSP-243.01				
	128 SSP-244.00				
	129 SSP-245.00				
N	130 SSP-246.00				
N	131 SSP-247.00				
N	132 SSP-248.00				
N	133 SSP-249.00				
N	134 SSP-250.00				
N	136 SSP-251.00				
	137 SSP-251.00				
	138 SSP-252.00				
	139 SSP-253.00				
	140 SSP-254.00				
	141 SSP-255.00				
	142 SSP-256.00				
	143 SSP-261.00				
	144 SSP-262.00				
	145 SSP-263.00				
	146 SSP-264.00				
	147 SSP-265.00				
	148 SSP-266.00				
	149 SSP-267.00				
	150 SSP-268.00				
	151 SSP-269.00				
	152 SSP-270.00				
	153 SSP-271.00				
PHASE 2.3 :					
	154 SSP-301.00				
	155 SSP-302.00				
	156 SSP-303.00				
	157 SSP-304.00				
	158 SSP-305.00				
PHASE 2.4 :					
SEE DM-003 FOR FULL DM DRAWING LIST					
PHASE 2.5 :					
	301 SSP-401.00				
	302 SSP-402.00				
	303 SSP-403.00				
	304 SSP-404.00				
	305 SSP-405.00				
	306 SSP-406.00				
	307 SSP-407.00				
	308 SSP-408.00				
	309 SSP-409.00				
	310 SSP-410.01				
	311 SSP-410A.00				
* = NO CHANGE *N = NEW SHEET *S = SUPERSERING *O = OMITTED					
● DRAWING BEING SUBMITTED					

18	12/29/20	REVISED SHEETS	KC
17	08/28/20	REVISED SHEETS	KC
No.	DATE	DESCRIPTION	BY

**HOWARD I. SHAPIRO & ASSOCIATES**  
CONSULTING ENGINEERS, P.C.

266 MERRICK ROAD, SUITE 300, LYNBROOK, N.Y. 11563  
TEL: (516) 791-2600 FAX: (516) 791-5425

COPYRIGHT DESIGN NOT TO BE LENT, COPIED, OR REPRODUCED IN WHOLE OR IN PART WITHOUT PRIOR WRITTEN CONSENT.

THIS OFFICE DISCLAIMS ANY RESPONSIBILITY FOR DRAWINGS OR OTHER DOCUMENTS RELATED TO THIS PROJECT UNLESS THEY BEAR THE SIGNATURE AND SEAL OF A PROFESSIONAL ENGINEER OF THIS OFFICE. THE NEW YORK STATE EDUCATION LAW PROHIBITS ANY ALTERATIONS TO, OR DELETIONS FROM, THIS DRAWING EXCEPT AS MAY BE MADE BY A LICENSED PROFESSIONAL ENGINEER OR REGISTERED ARCHITECT WHO WILL BEAR THE RESPONSIBILITY FOR SUCH CHANGE.

CLIENT  
NORTHSTAR CONTRACTING GROUP, INC.  
32 WILLIAMS PARKWAY  
EAST HANOVER, NJ 07936

PROJECT  
SITE SAFETY PLAN FOR  
DEMOLITION OPERATIONS AT  
270 PARK AVENUE, MANHATTAN, NY

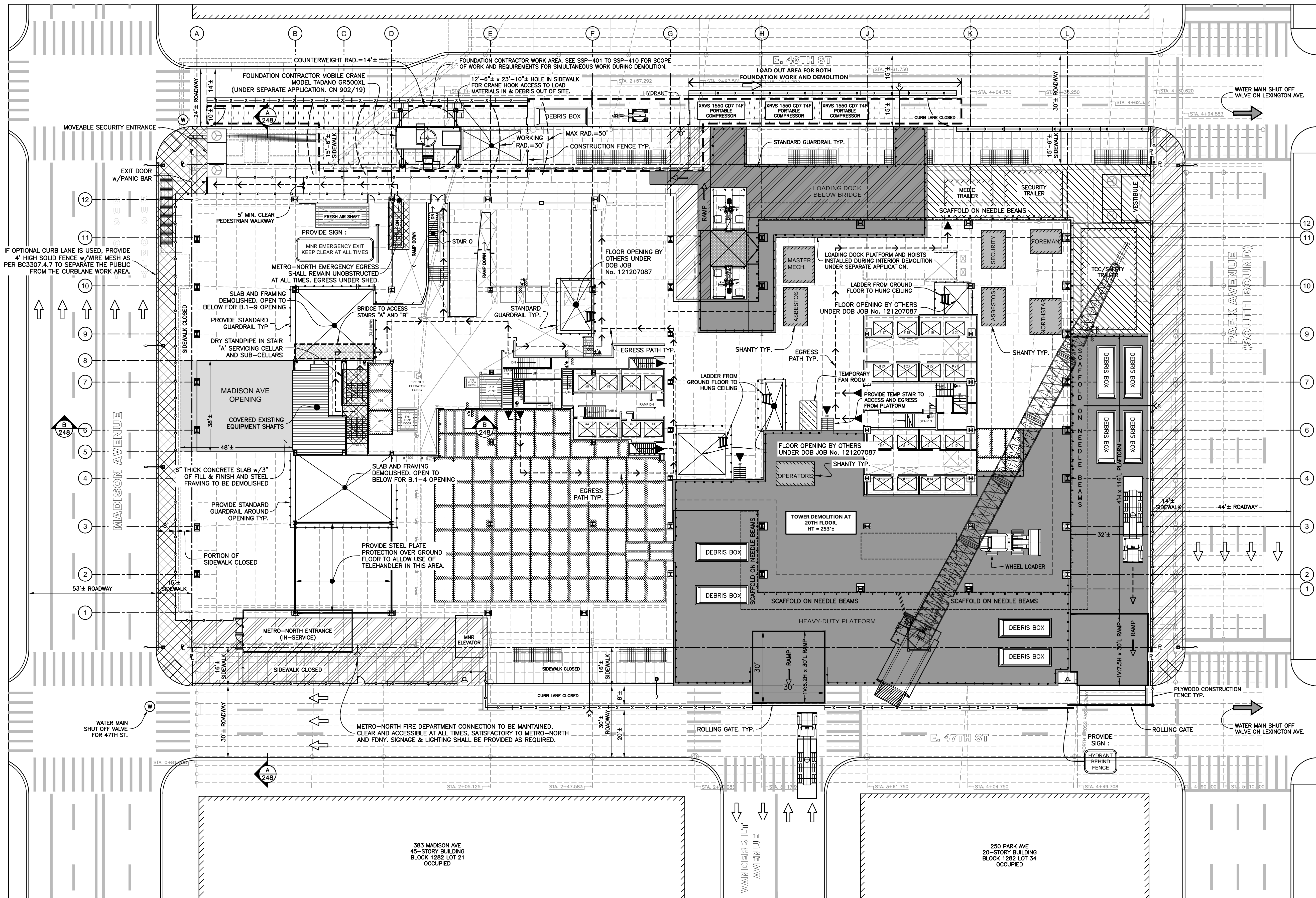
ZONING INFORMATION  
BLOCK: 1283  
LOT: 21  
ZONE: C5-3  
ZONING MAP: 8D  
COMMUNITY BOARD: 105  
BIN #: 1035421

PLACE STICKER HERE

EXAMINER'S STAMP HERE

TITLE  
DRAWING LIST

<p><b>APPROVED</b> AMENDED PLAN 01/06/2021 CSC SSP</p>	DRAWING BY: KC DATE: 12/28/20
	PROJECT NO: 18211.02.00
	ENGINEER: JS
	SCALE: AS NOTED
	CHK BY: JS
	DWG NO: SSP-002A.02
	V:2018\18211.00.00 3 OF 339



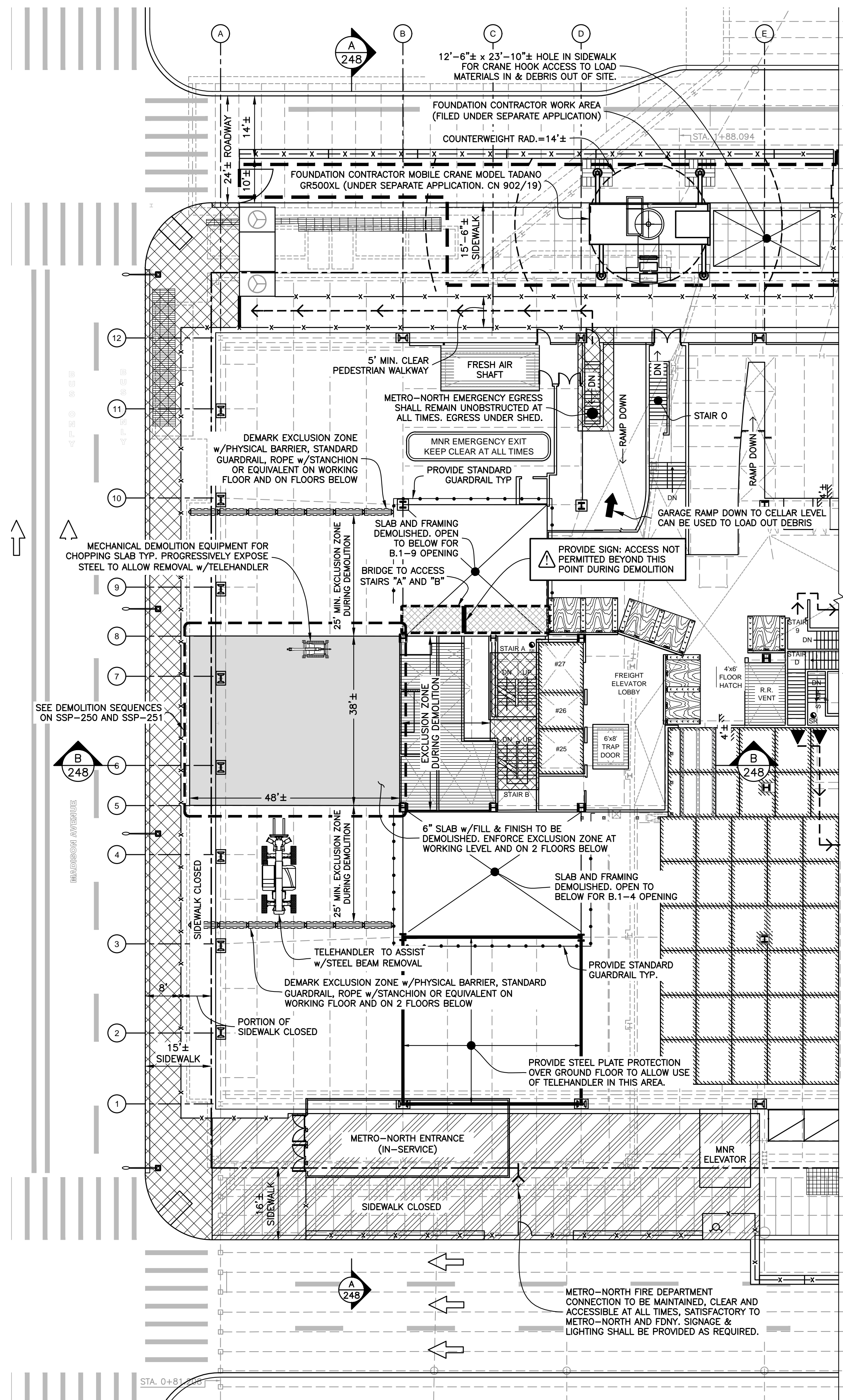
LEGEND	
	GROUND FLOOR SLAB TO BE DEMOLISHED.
	OPENINGS MADE IN THE GROUND FLOOR FOR ACCESS TO HUNG CEILING AND REMOVAL OF MEP DEBRIS
	8' HEAVY DUTY SIDEWALK SHED TYP.
	16' HIGH SIDEWALK SHED TYP.

- NOTES:
- THESE PLANS ADDRESS THE DEMOLITION OF THE EXISTING GROUND FLOOR BETWEEN A-B AND 5-8 LINES AS SHOWN IN PLAN ON THIS SHEET.
  - SEE SSP-201 AND SSP-202 FOR GENERAL NOTES FOR ADDITIONAL INFORMATION REGARDING THE USE OF MECHANICAL DEMOLITION EQUIPMENT AND SAFEGUARDS DURING DEMOLITION. SEE SSP-201A FOR LEGEND AND PERMIT LOG.
  - THE PLAN VIEW SHOWS THE B.1-4 AND THE B.1-9 OPENINGS WERE MADE PRIOR TO MAKING THE MADISON AVENUE OPENING. THE SEQUENCE CAN ALSO BE CHANGED TO MAKE THE MADISON AVENUE OPENING FIRST.

No.	DATE	DESCRIPTION	BY
<b>HOWARD I. SHAPIRO &amp; ASSOCIATES</b> CONSULTING ENGINEERS, P.C.			
266 MERRICK ROAD, SUITE 300, LYNBROOK, N.Y. 11563 TEL: (516) 791-2600 FAX: (516) 791-5425			
COPYRIGHT DESIGN NOT TO BE LENT, COPIED, OR REPRODUCED IN WHOLE OR IN PART WITHOUT PRIOR WRITTEN CONSENT.			
THIS OFFICE DISCLAIMS ANY RESPONSIBILITY FOR DRAWINGS OR OTHER DOCUMENTS RELATED TO THIS PROJECT UNLESS THEY BEAR THE SIGNATURE AND SEAL OF A PROFESSIONAL ENGINEER OF THIS OFFICE. THE NEW YORK STATE EDUCATION LAW PROHIBITS ANY ALTERATIONS TO, OR DEVIATIONS FROM, THIS DRAWING EXCEPT AS MAY BE MADE BY A LICENSED PROFESSIONAL ENGINEER OR REGISTERED ARCHITECT WHO WILL BEAR THE RESPONSIBILITY FOR SUCH CHANGE.			
CLIENT NORTHSTAR CONTRACTING GROUP, INC. 32 WILLIAMS PARKWAY, E. HANOVER, NJ 07936 PH: (973) 884-8682			
PROJECT SITE SAFETY PLAN FOR DEMOLITION OPERATIONS AT 270 PARK AVENUE, MANHATTAN, NY			
ZONING INFORMATION BLOCK: 1283 LOT: 21 ZONE: C5-3 ZONING MAP: 8D COMMUNITY BOARD: 105 BIN #: 1035421			

SITE PLAN - GROUND FLOOR  
Scale: 1" = 20'

TITLE FLOOR OPENING AT MADISON AVE SITE PLAN - GROUND FLOOR	
	DRAWING BY: SM DATE: 12/28/20 PROJECT NO: 18211.02.00 ENGINEER: JS SCALE: AS NOTED CHK BY: JS DWG NO: SSP-246.00



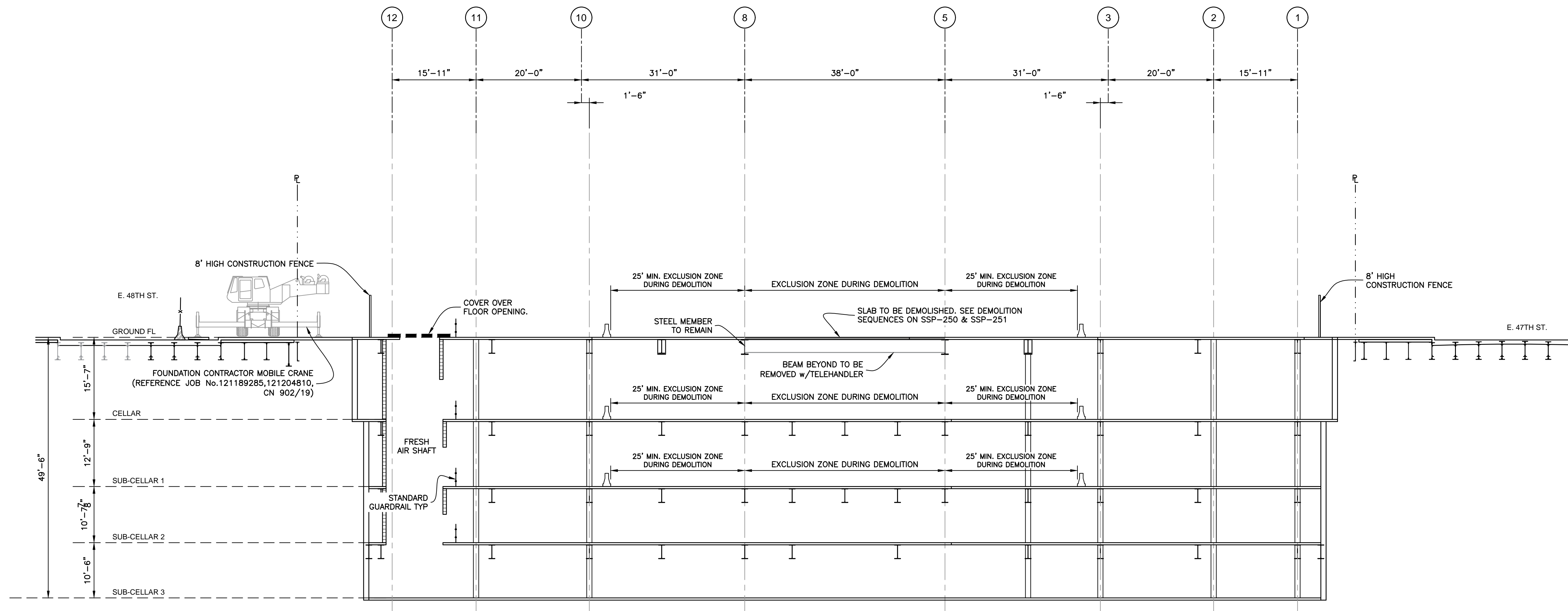
**NOTES :**

- 1.0 REFER TO SSP-201 AND SSP-202 FOR GENERAL NOTES FOR ADDITIONAL INFORMATION REGARDING THE USE OF MECHANICAL DEMOLITION EQUIPMENT AND SAFEGUARDS DURING DEMOLITION.
- 2.0 **DEMOLITION OF GROUND FLOOR SLAB AT THE B.1-LINE :**
  - 2.1 PRIOR TO DEMOLITION, INSTALL FOUNDATION WALL BRACING ALONG MADISON AVE. SEE SSP-249 FOR FOUNDATION WALL BRACING DETAILS.
  - 2.2 PRIOR TO DEMOLITION, REVIEW DEMOLITION MECHANICAL EQUIPMENT USE NOTES ON SSP-202.
  - 2.3 MARK OUT CUT LINES FOR AREAS WHERE SLAB WILL BE REMOVED. SCORE SLAB TO DEFINE BOUNDARY OF DEMOLITION.  
  
IN CASES WHERE CONTINUOUS SLAB REINFORCEMENT EXTENDS FROM PORTION OF SLAB TO REMAIN TO PORTION OF SLAB TO BE REMOVED, WELD REBAR TO STEEL BEAM TO MAINTAIN ANCHORAGE PRIOR TO DEMOLISHING SLAB.  
  
THE SPAN OF SLAB SHOWN HEREIN IS BASED ON THE ORIGINAL STRUCTURAL DRAWINGS. CONTACT THE ENGINEER AS NEEDED.
  - 2.4 VACATE AREA AT CELLAR AND SUB-CELLAR 1 DIRECTLY BELOW THE PORTION OF SLAB TO BE DEMOLISHED PLUS AN ADDITIONAL 25' IN ALL DIRECTIONS AS AN EXCLUSION ZONE FOR PROTECTION AGAINST FALLING DEBRIS. NO INDIVIDUAL SHALL BE PERMITTED IN THE EXCLUSION ZONE WHILE DEMOLITION IS IN PROGRESS.
  - 2.5 CHOP CONCRETE SLAB AND BEAM ENCASEMENT USING MECHANICAL EQUIPMENT. SEE SSP-201 FOR PERMISSIBLE EQUIPMENT.  
  
THE CONCRETE DEMOLITION SHALL NOT COMPROMISE THE INTEGRITY OF THE STEEL FRAMING BRACING THE BUILDING COLUMNS. FLANGES AND WEBS SHALL NOT BE PERFORATED OR OTHERWISE DAMAGED BY THE DEMOLITION EQUIPMENT.  
  
DEBRIS SHALL BE ADEQUATELY WETTED TO PREVENT DUST ACCUMULATION.
  - 2.6 CONCRETE DEBRIS IS PERMITTED TO DROP TO CELLAR LEVEL. PERIODICALLY CLEAN UP THE DEBRIS FROM CELLAR USING THE GARAGE RAMP.
  - 2.7 AT THE END OF EACH WORK DAY, REMOVE DEBRIS ACCUMULATION.
  - 2.8 INSTALL GUARDRAILS AS LEADING EDGES ARE CREATED BY THE DEMOLITION OF THE SLABS.
  - 2.9 IF SLAB IS DEMOLISHED BY HAND METHODS, MEN SHALL TIE OFF AND STAND ON PLANKS WHEN CHOPPING SLAB.
- 3.0 ACCESS TO STAIR B BELOW THE GROUND FLOOR WILL BE ELIMINATED BY THE B.1-4 FLOOR OPENINGS AT SUB-CELLAR 1 TO SUB-CELLAR 3. TWO FIRE PROTECTED MEANS OF EGRESS ARE AVAILABLE FROM THE CELLAR: STAIR A AND STAIR O.  
  
SOLIDLY BARRICADE DOOR EXITING FROM STAIR TO PREVENT ACCESS OUT OF STAIRWELL. PROVIDE A SIGNAGE TO INDICATE NO ACCESS AND SHAFT BEYOND DOOR.  
  
ACCESS FROM SUB-CELLAR 3 TO GROUND FLOOR IN STAIR B SHALL REMAIN UNOBSTRUCTED.

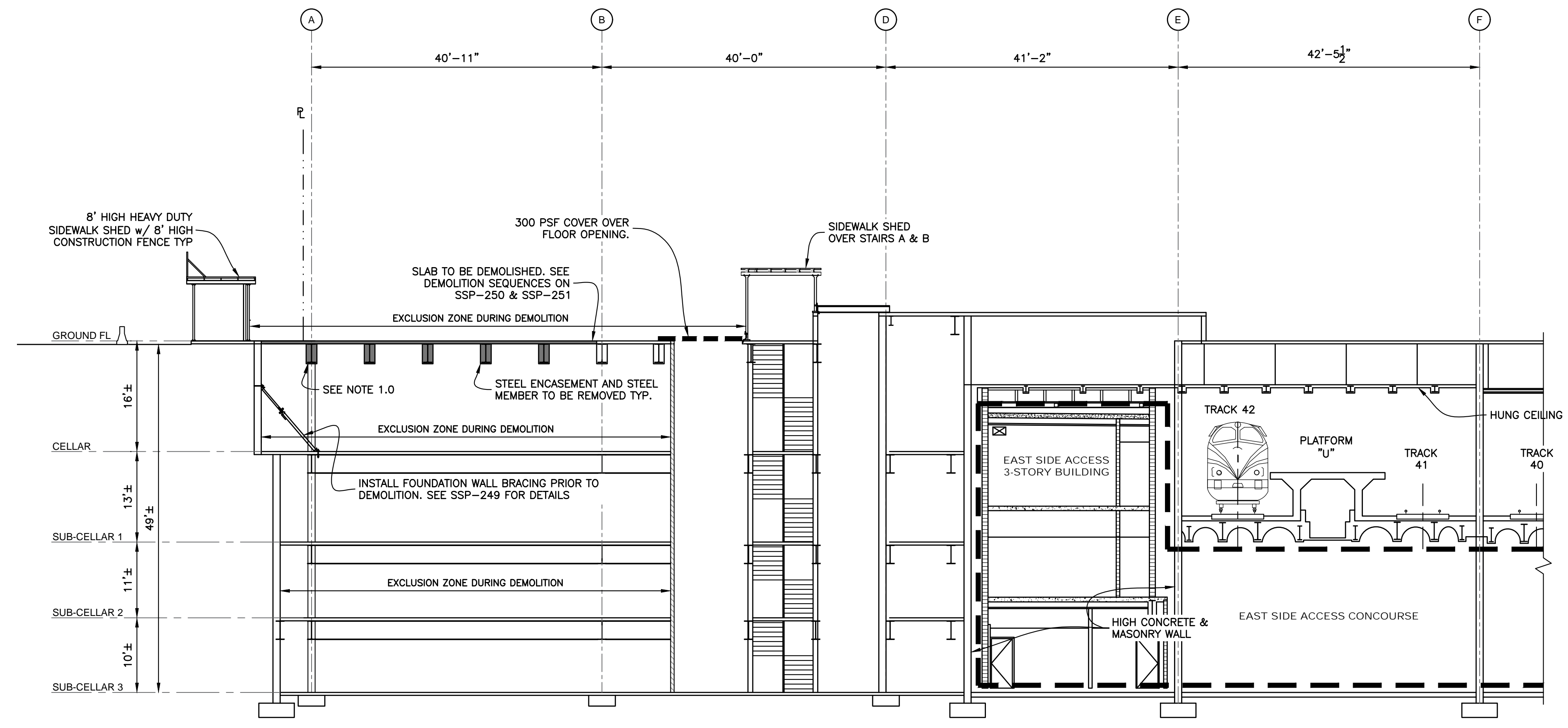
LEGEND	
	SLAB TO BE DEMOLISHED
	NO EGRESS AT FLOOR UNDER CONSIDERATION
	8' HEAVY DUTY SIDEWALK SHED TYP.
	16' HIGH SIDEWALK SHED TYP.
	STEEL BEAMS TYP.
	STEEL BEAMS TO BE REMOVED TYP.
	EXCLUSION ZONE
	SCORE SLAB ONLY TYP. SEE DETAIL ON SSP-301.
	DIRECTION OF SLAB RE-ENFORCEMENT TYP.
	EGRESS FOR FOUNDATION CONTRACTOR
	EGRESS FOR DEMOLITION CONTRACTOR
	EGRESS FOR MNR EMERGENCY EXIT
	DEBRIS LOADOUT PATH TYP.

**GROUND FLOOR - PARTIAL PLAN**  
Scale : 1" = 15'-0"

<p>No. DATE DESCRIPTION BY</p> <p><b>HOWARD I. SHAPIRO &amp; ASSOCIATES</b> CONSULTING ENGINEERS, P.C.</p> <p>266 MERRICK ROAD, SUITE 300, LYNBROOK, N.Y. 11563 TEL: (516) 791-2600 FAX: (516) 791-5425</p> <p><small>COPYRIGHT DESIGN NOT TO BE LENT, COPIED, OR REPRODUCED IN WHOLE OR IN PART WITHOUT PRIOR WRITTEN CONSENT.</small></p> <p><small>THIS OFFICE DISCLAIMS ANY RESPONSIBILITY FOR DRAWINGS OR OTHER DOCUMENTS RELATED TO THIS PROJECT UNLESS THEY BEAR THE SIGNATURE AND SEAL OF A PROFESSIONAL ENGINEER OF THIS OFFICE. THE NEW YORK STATE EDUCATION LAW PROHIBITS ANY ALTERATIONS TO, OR DELETIONS FROM, THIS DRAWING EXCEPT AS MAY BE MADE BY A LICENSED PROFESSIONAL ENGINEER OR REGISTERED ARCHITECT WHO WILL BEAR THE RESPONSIBILITY FOR SUCH CHANGE.</small></p> <p>CLIENT NORTHSTAR CONTRACTING GROUP, INC. 32 WILLIAMS PARKWAY, E. HANOVER, NJ 07936 PH: (973) 884-8682</p> <p>PROJECT SITE SAFETY PLAN FOR DEMOLITION OPERATIONS AT 270 PARK AVENUE, MANHATTAN, NY</p> <p>ZONING INFORMATION BLOCK: 1283 LOT: 21 ZONE: C5-3 ZONING MAP: 8D COMMUNITY BOARD: 105 BIN #: 1035421</p> <p style="text-align: center;">PLACE STICKER HERE</p> <p style="text-align: right;">EXAMINER'S STAMP HERE</p>	<p>TITLE <b>FLOOR OPENING AT MADISON AVE</b> GROUND FLOOR PLAN</p> <p>SEAL </p> <p><b>APPROVED</b> AMENDED PLAN 01/06/2021 CSC SSP</p> <p>DRAWING BY: SM DATE: 12/28/20 PROJECT NO: 18211.02.00 ENGINEER: JS SCALE: AS NOTED CHK BY: JS DWG NO: <b>SSP-247.00</b></p>
---	---



SECTION A-A  
Scale : 3/32" = 1'-0"

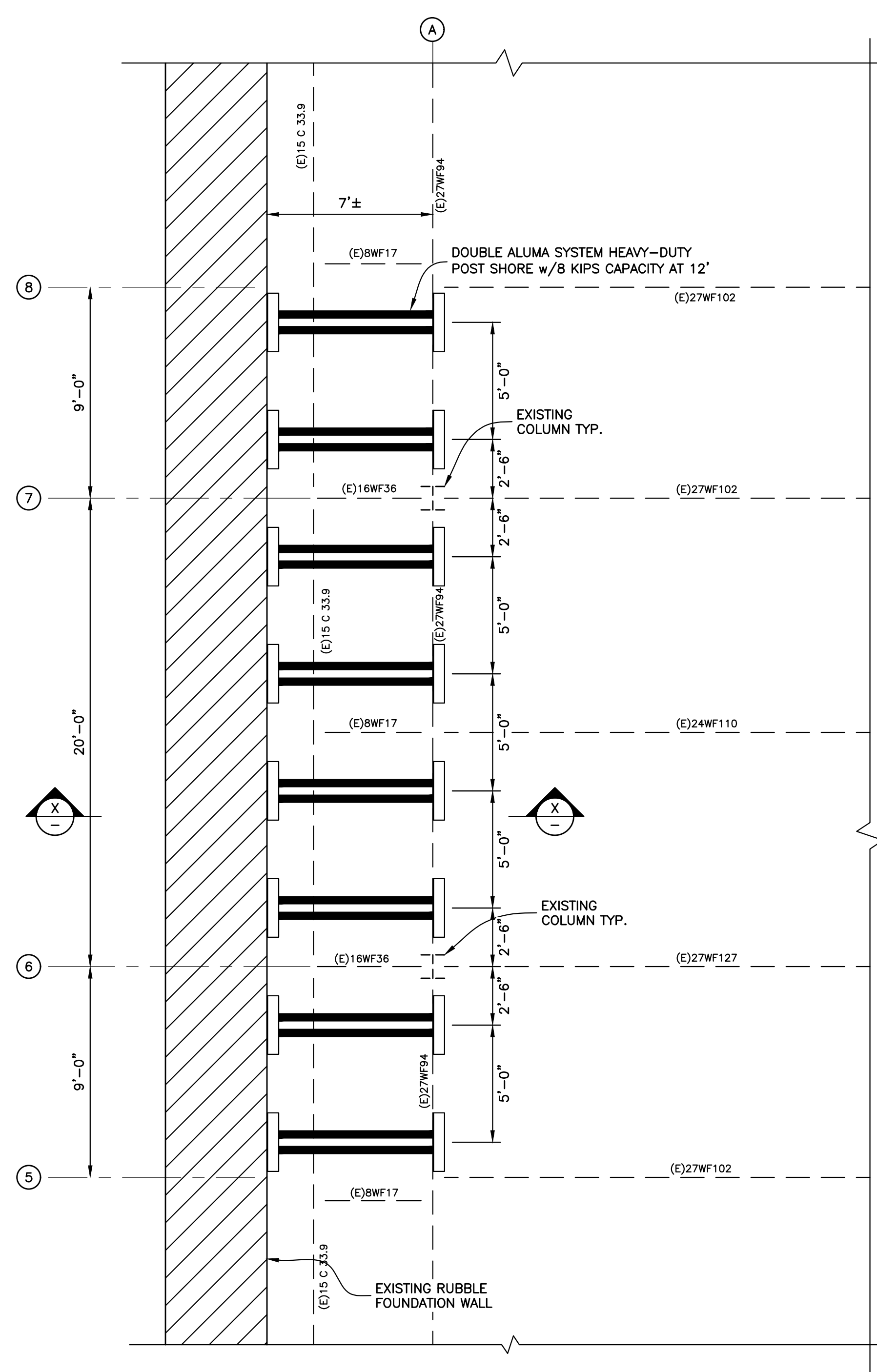


SECTION B-B  
Scale : 3/32" = 1'-0"

- NOTES :**
- 1.0 PORTION OF A-LINE HEADER BEAM TO REMAIN. REQUIRES SHORING PRIOR TO DISMANTLING THE PORTION TO BE REMOVED.  
FOR A-LINE SHORING, REFERENCE BANKER STEEL DEMOLITION GRIDLINE A DRAWINGS EQ-001 AND EQ-002 FOR DEMOLITION SEQUENCE (UNDER SEPARATE APPLICATION).
  - 2.0 LOAD OUT DEBRIS VIA GARAGE RAMP.

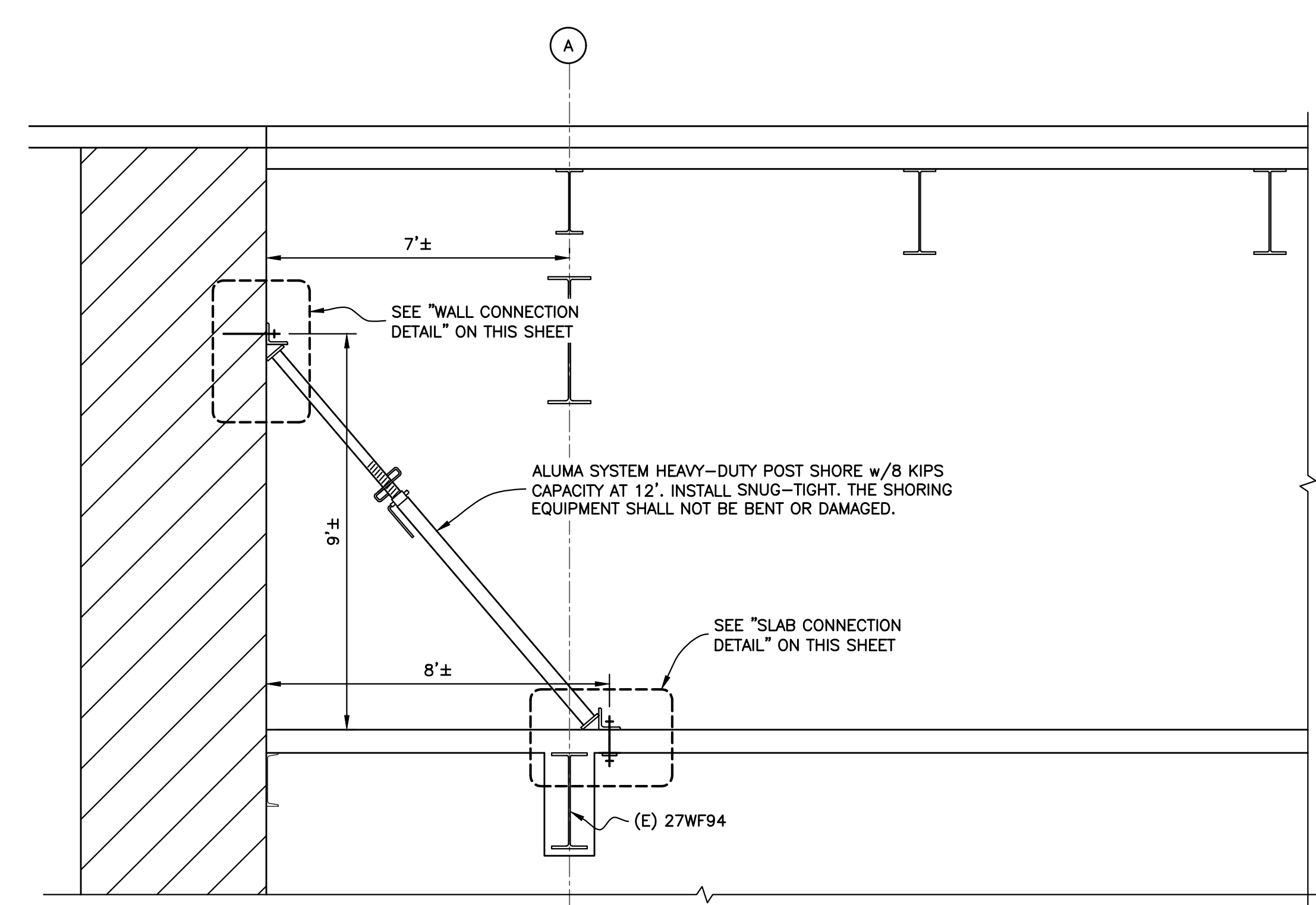
No.	DATE	DESCRIPTION	BY
266 MERRICK ROAD, SUITE 300, LYNBROOK, N.Y. 11563 TEL: (516) 791-2600 FAX: (516) 791-5425 <small>COPYRIGHT DESIGN NOT TO BE LENT, COPIED, OR REPRODUCED IN WHOLE OR IN PART WITHOUT PRIOR WRITTEN CONSENT.</small> <small>THIS OFFICE DISCLAIMS ANY RESPONSIBILITY FOR DRAWINGS OR OTHER DOCUMENTS RELATED TO THIS PROJECT UNLESS THEY BEAR THE SIGNATURE AND SEAL OF A PROFESSIONAL ENGINEER OF THIS OFFICE. THE NEW YORK STATE EDUCATION LAW PROHIBITS ANY ALTERATIONS TO, OR SELECTIONS FROM, THIS DRAWING EXCEPT AS MAY BE MADE BY A LICENSED PROFESSIONAL ENGINEER OR REGISTERED ARCHITECT WHO WILL BEAR THE RESPONSIBILITY FOR SUCH CHANGE.</small>			
<b>CLIENT</b> NORTHSTAR CONTRACTING GROUP, INC. 32 WILLIAMS PARKWAY, E. HANOVER, NJ 07936 PH: (973) 884-8682			
<b>PROJECT</b> SITE SAFETY PLAN FOR DEMOLITION OPERATIONS AT 270 PARK AVENUE, MANHATTAN, NY			
<b>ZONING INFORMATION</b> BLOCK: 1283 LOT: 21 ZONE: C5-3 ZONING MAP: 8D COMMUNITY BOARD: 105 BIN #: 1035421			
PLACE STICKER HERE		EXAMINER'S STAMP HERE	
<b>TITLE</b> FLOOR OPENING AT MADISON AVE SECTIONS A-A & B-B			
		DRAWING BY: SM DATE: 12/28/20 PROJECT NO: 18211.02.00 ENGINEER: JS SCALE: AS NOTED CHK BY: JS DWG NO:	
		<b>SSP-248.00</b>	
132 OF 339			

**NOTE:**  
 THESE DETAILS ARE SCHEMATICS AND FOR REFERENCE ONLY.  
 APPROVED CONSTRUCTION DOCUMENTS WILL BE ON SITE.

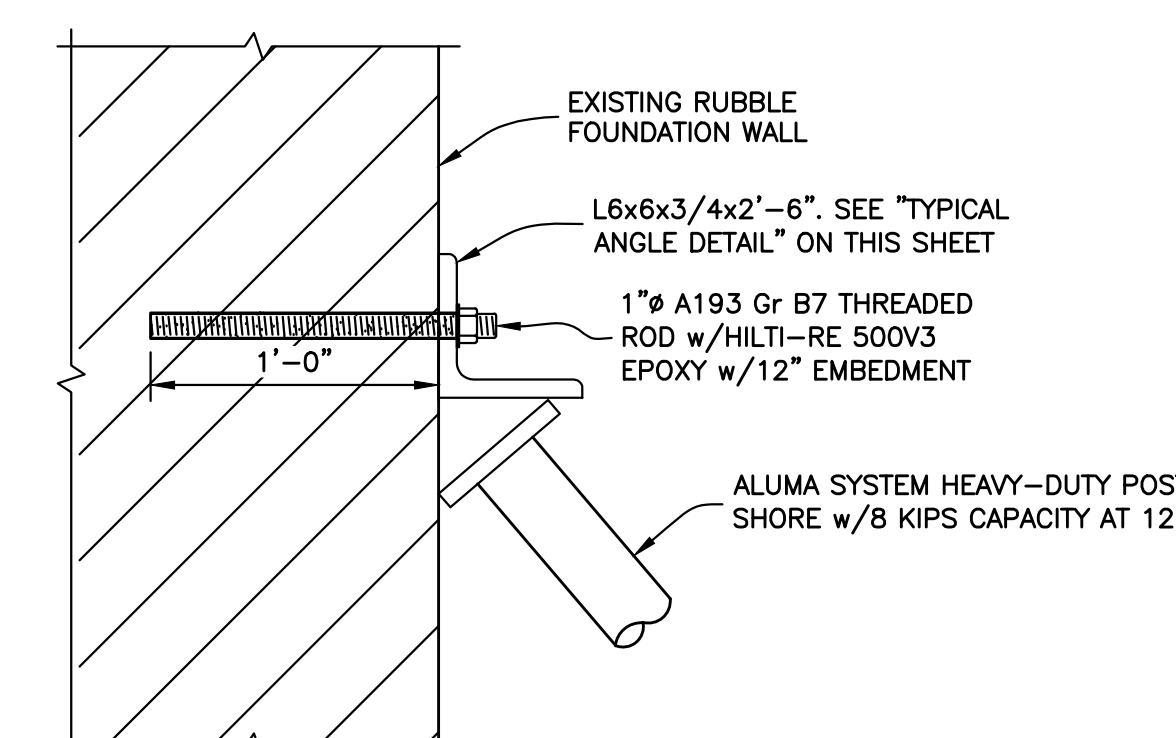


**WALL BRACING PLAN**  
 Scale: 1/4" = 1'-0"

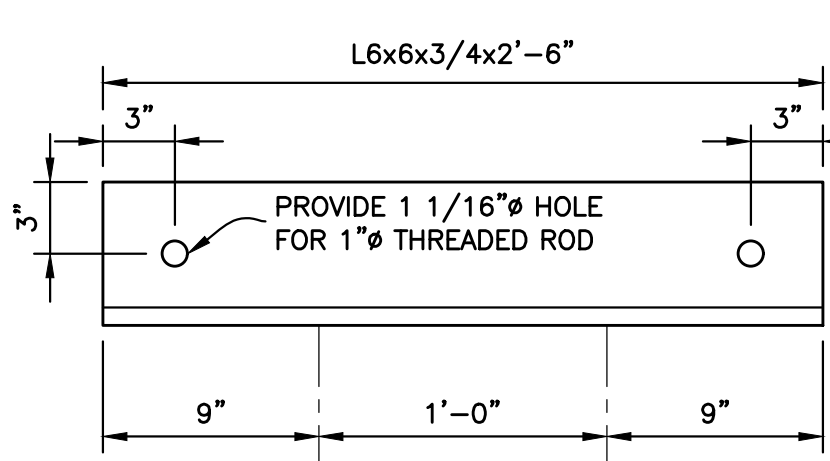
LEGEND	
	RUBBLE FOUNDATION WALL
	DOUBLE ALUMA SYSTEM HEAVY-DUTY POST SHORE w/8 KIPS CAPACITY @12' TYP.
	EXISTING STEEL BEAMS TYP.
	EXISTING COLUMN TYP.



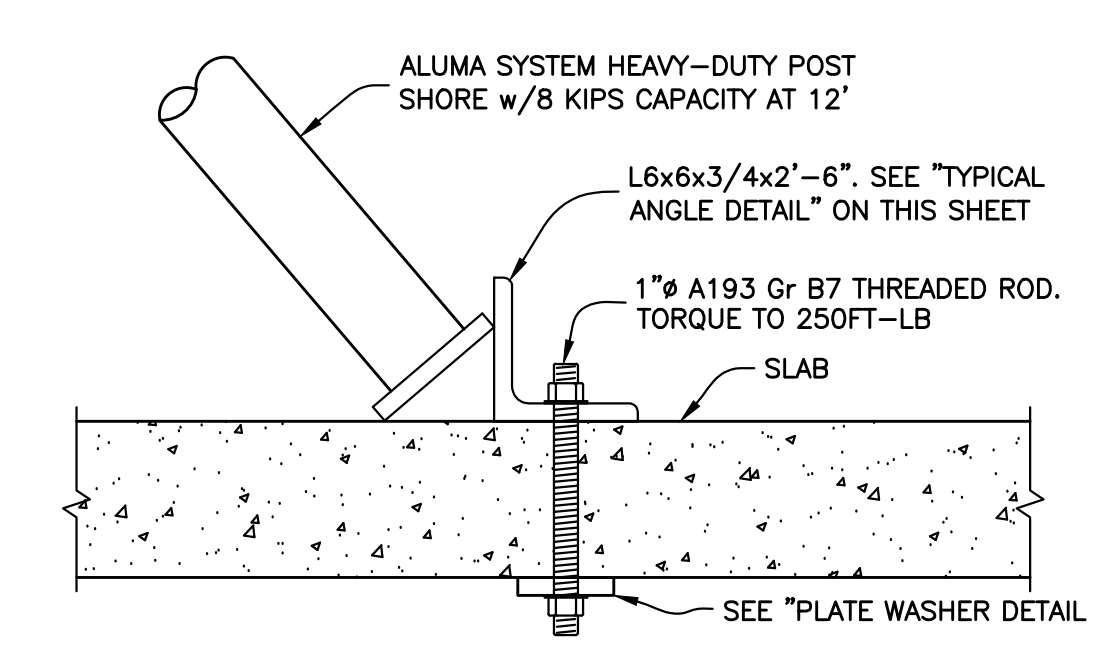
**SECTION X-X**  
 Scale: 3/8" = 1'-0"



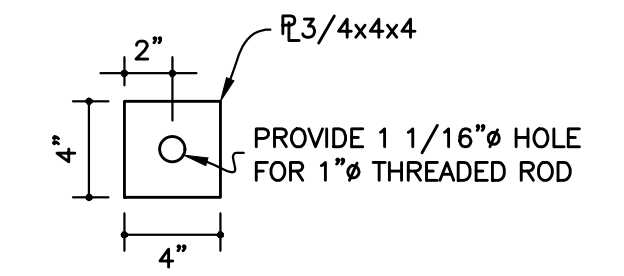
**WALL CONNECTION DETAIL**  
 Scale: 1 1/2" = 1'-0"



**TYPICAL ANGLE DETAIL**  
 Scale: 1 1/2" = 1'-0"

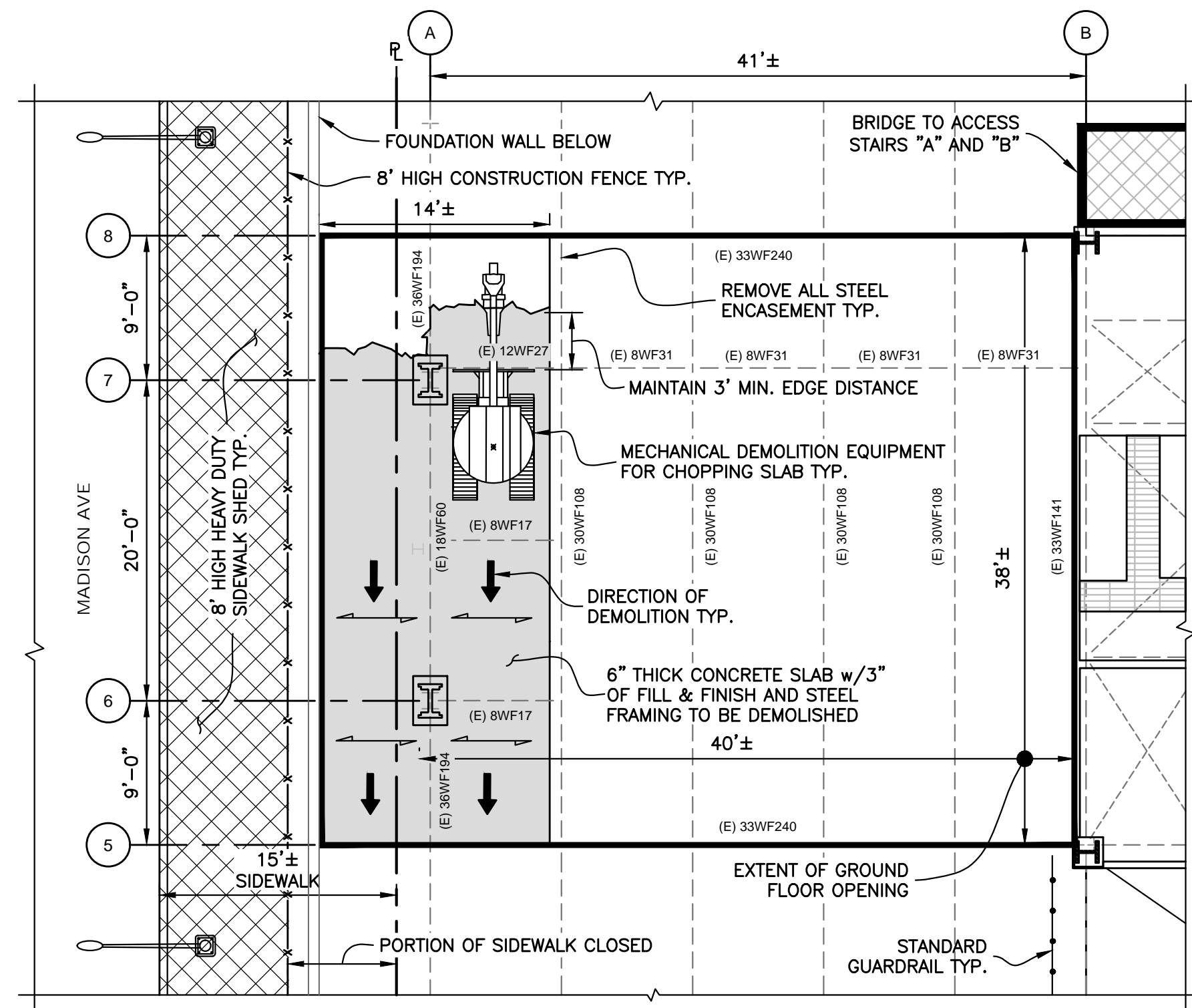


**SLAB CONNECTION DETAIL**  
 Scale: 1 1/2" = 1'-0"

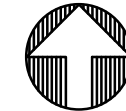


**PLATE WASHER DETAIL**  
 Scale: 1 1/2" = 1'-0"

No.	DATE	DESCRIPTION	BY
<b>HOWARD I. SHAPIRO &amp; ASSOCIATES</b> CONSULTING ENGINEERS, P.C. 266 MERRICK ROAD, SUITE 300, LYNBROOK, N.Y. 11563 TEL: (516) 791-2600 FAX: (516) 791-5425 <small>COPYRIGHT DESIGN NOT TO BE LENT, COPIED, OR REPRODUCED IN WHOLE OR IN PART WITHOUT PRIOR WRITTEN CONSENT.            THIS OFFICE DISCLAIMS ANY RESPONSIBILITY FOR DRAWINGS OR OTHER DOCUMENTS RELATED TO THIS PROJECT UNLESS THEY BEAR THE SIGNATURE AND SEAL OF A PROFESSIONAL ENGINEER OF THIS OFFICE. THE NEW YORK STATE EDUCATION LAW PROHIBITS ANY ALTERATIONS TO, OR DELETIONS FROM, THIS DRAWING EXCEPT AS MAY BE MADE BY A LICENSED PROFESSIONAL ENGINEER OR REGISTERED ARCHITECT WHO WILL BEAR THE RESPONSIBILITY FOR SUCH CHANGE.</small>			
CLIENT			
NORTHSTAR CONTRACTING GROUP, INC. 32 WILLIAMS PARKWAY, E. HANOVER, NJ 07936 PH: (973) 884-8682			
PROJECT			
SITE SAFETY PLAN FOR DEMOLITION OPERATIONS AT 270 PARK AVENUE, MANHATTAN, NY			
ZONING INFORMATION			
BLOCK: 1283 LOT: 21 ZONE: C5-3 ZONING MAP: 8D COMMUNITY BOARD: 105 BIN #: 1035421			
PLACE STICKER HERE		EXAMINER'S STAMP HERE	
TITLE			
FOUNDATION WALL BRACING CELLAR PARTIAL PLAN SECTION AND DETAILS			
		DRAWING BY: SM DATE: 12/28/20 PROJECT NO: 18211.02.00 ENGINEER: JS SCALE: AS NOTED CHK BY: JS DWG NO:	
<b>APPROVED</b> <b>AMENDED PLAN</b> 01/06/2021 CSC SSP		<b>SSP-249.00</b>	
		133 OF 339	

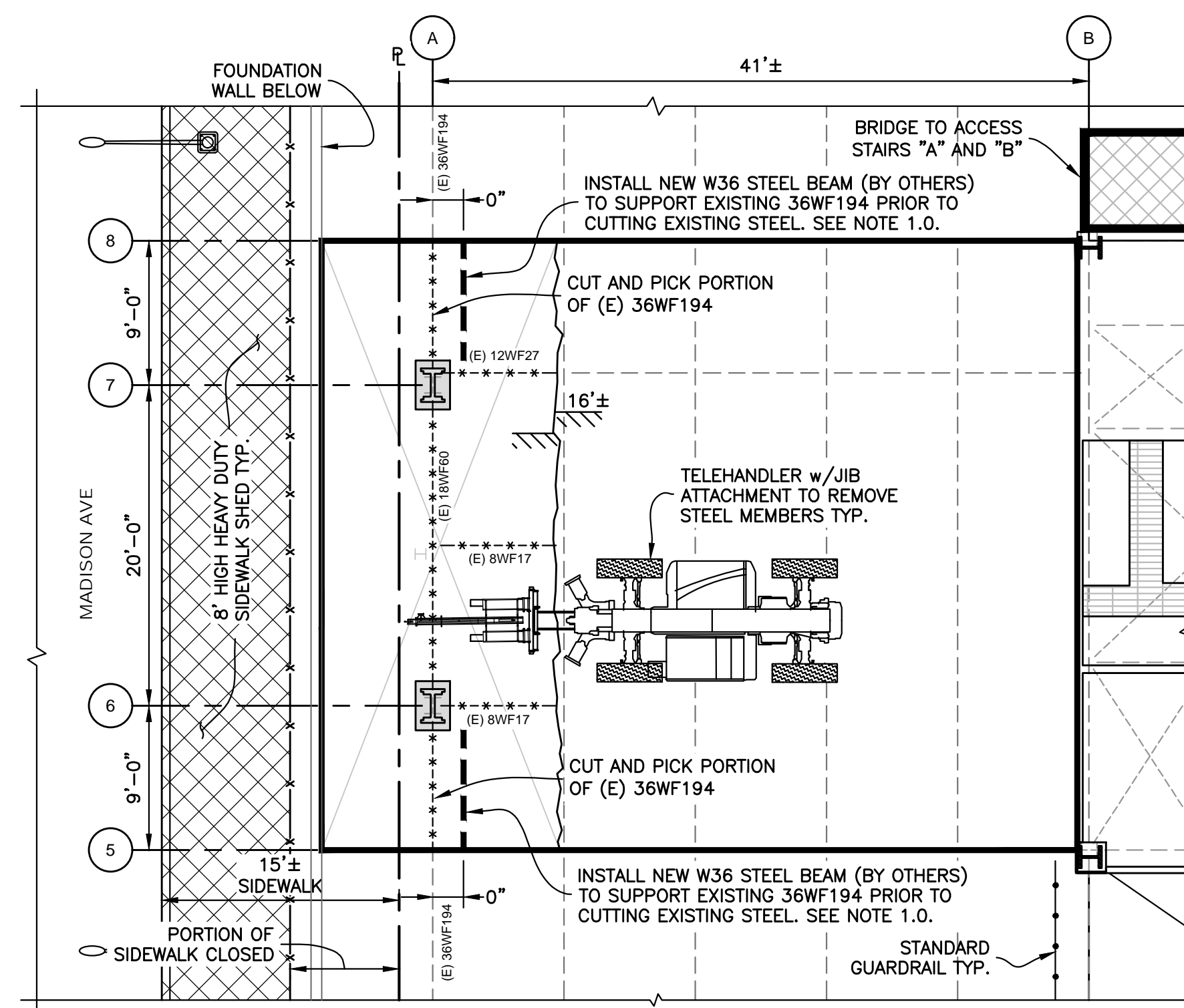


**DEMOLITION SEQUENCE 1- PLAN**  
Scale: 1/8" = 1'-0"



**SEQUENCE 1:**

- PRIOR TO COMMENCING DEMOLITION, ENFORCE EXCLUSION ZONES AT THE WORK AREA AND AN ADDITIONAL 25' IN ALL DIRECTIONS SURROUNDING THE WORK AREA AT THE WORKING LEVEL AND ON TWO FLOORS BELOW.  
PROVIDE STANDARD GUARDRAIL, YODOCKS, CAUTION TAPE, ROPE w/STANCHION OR EQUIVALENT TO DEMARK EXCLUSION ZONE.
- PROVIDE PLYWOOD PROTECTION OVER BRACING FOR FOUNDATION WALL TO DEFLECT DEBRIS PRIOR TO CHOPPING SLAB.
- DEMOLISH PORTION OF SLAB AS SHOWN IN PLAN BETWEEN 5 TO 8 LINES WITH MECHANICAL DEMOLITION EQUIPMENT. MECHANICAL DEMOLITION EQUIPMENT TO MAINTAIN A MINIMUM OF 3' EDGE DISTANCE BETWEEN EDGE OF BLADE OR TRACK AND WORKING FACE DURING SLAB DEMOLITION.

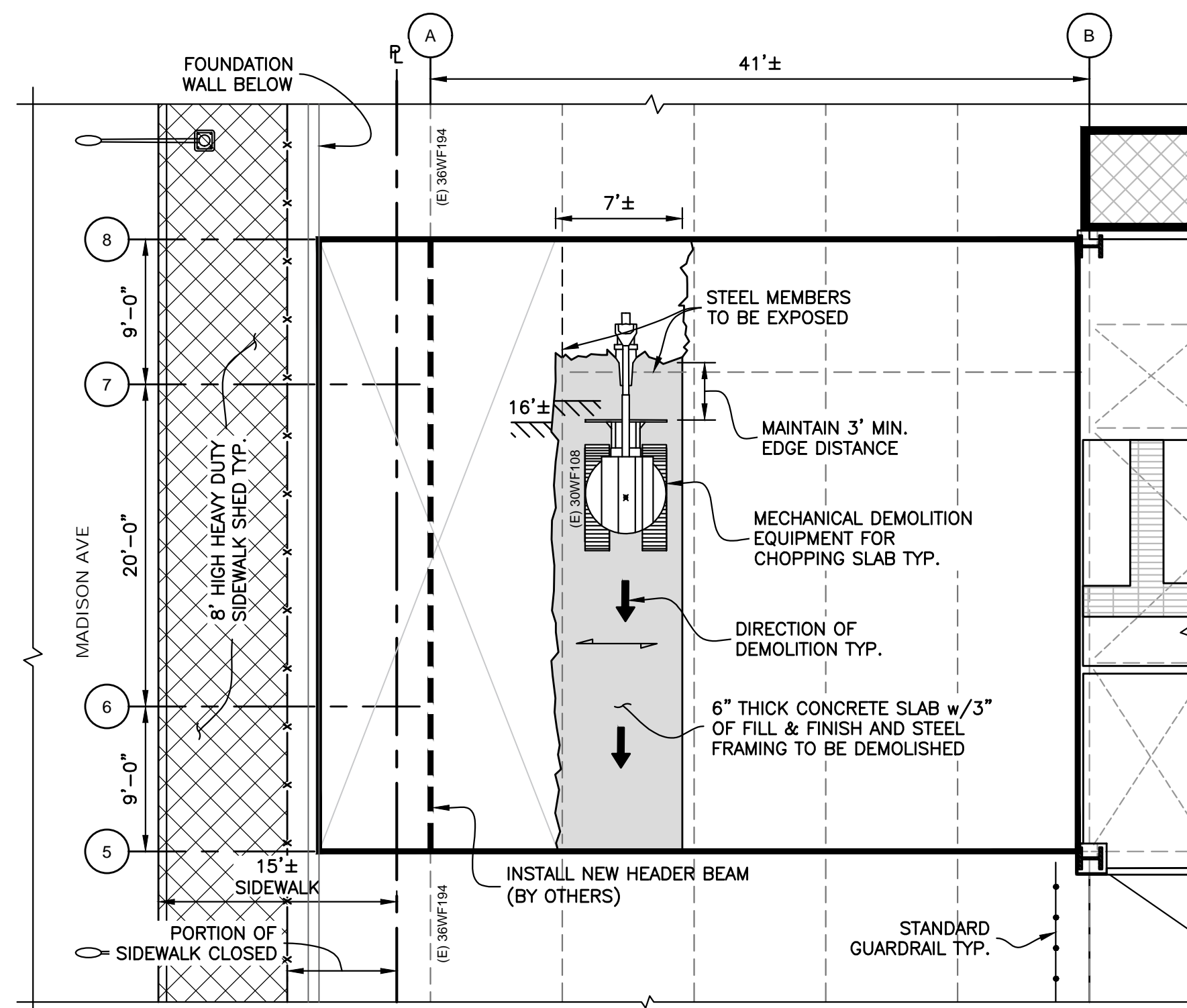


**DEMOLITION SEQUENCE 2- PLAN**  
Scale: 1/8" = 1'-0"



**SEQUENCE 2:**

- INSTALL NEW W36 STEEL BEAM (BY OTHERS) TO SUPPORT EXISTING 36WF194 PRIOR TO CUTTING AND PICKING PORTION OF EXISTING STEEL ON THE A-LINE.
- CUT AND PICK PORTIONS OF EXISTING 36WF194 AFTER INSTALLING NEW W36 STEEL BEAM. REMOVE ALL ENCASEMENT PRIOR TO PICKING STEEL.
- CUT AND PICK EXISTING 18WF60. REMOVE ALL ENCASEMENT PRIOR TO PICKING STEEL.
- CUT AND PICK PORTION OF COLUMN AT THE 6 AND 7 LINES AT EL.-5'-6"±. REMOVE ALL ENCASEMENT PRIOR TO PICKING STEEL.



**DEMOLITION SEQUENCE 3- PLAN**  
Scale: 1/8" = 1'-0"



**SEQUENCE 3:**

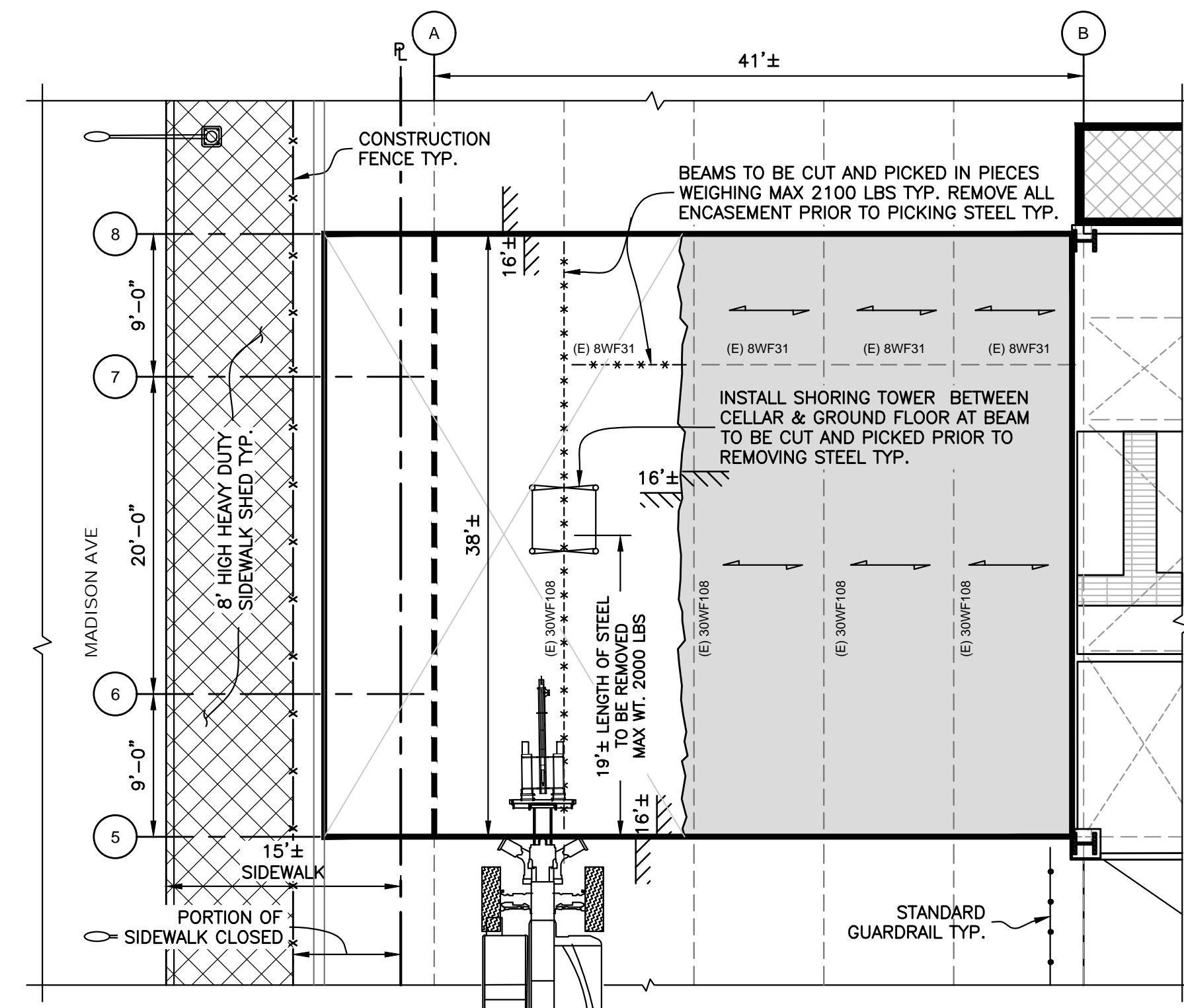
- INSTALL NEW HEADER BEAM (BY OTHERS) BETWEEN 5 TO 8 LINES.
- DEMOLISH PORTION OF SLAB AS SHOWN IN PLAN WITH MECHANICAL DEMOLITION EQUIPMENT.

LEGEND	
	EXTENT OF FLOOR OPENING
	SLAB TO BE DEMOLISHED
	8' HIGH HEAVY DUTY SIDEWALK SHED.
	DIRECTION OF SLAB DEMOLITION TYP.
	EXISTING STEEL BEAMS BELOW SLAB TYP.
	STEEL BEAMS TO BE REMOVED TYP.
	NEW STEEL BEAM TYP.
	STANDARD GUARDRAIL TYP.
	COLUMN TYP.
	COLUMN TO BE REMOVED TYP.

**NOTES:**

- PORTION OF A-LINE HEADER BEAM TO REMAIN. REQUIRES SHORING PRIOR TO DISMANTLING THE PORTION TO BE REMOVED.  
FOR A-LINE SHORING, REFERENCE BANKER STEEL DEMOLITION GRIDLINE A DRAWINGS EQ-001 AND EQ-002 FOR DEMOLITION SEQUENCE (UNDER SEPARATE APPLICATION).
- LOAD OUT DEBRIS VIA GARAGE RAMP.

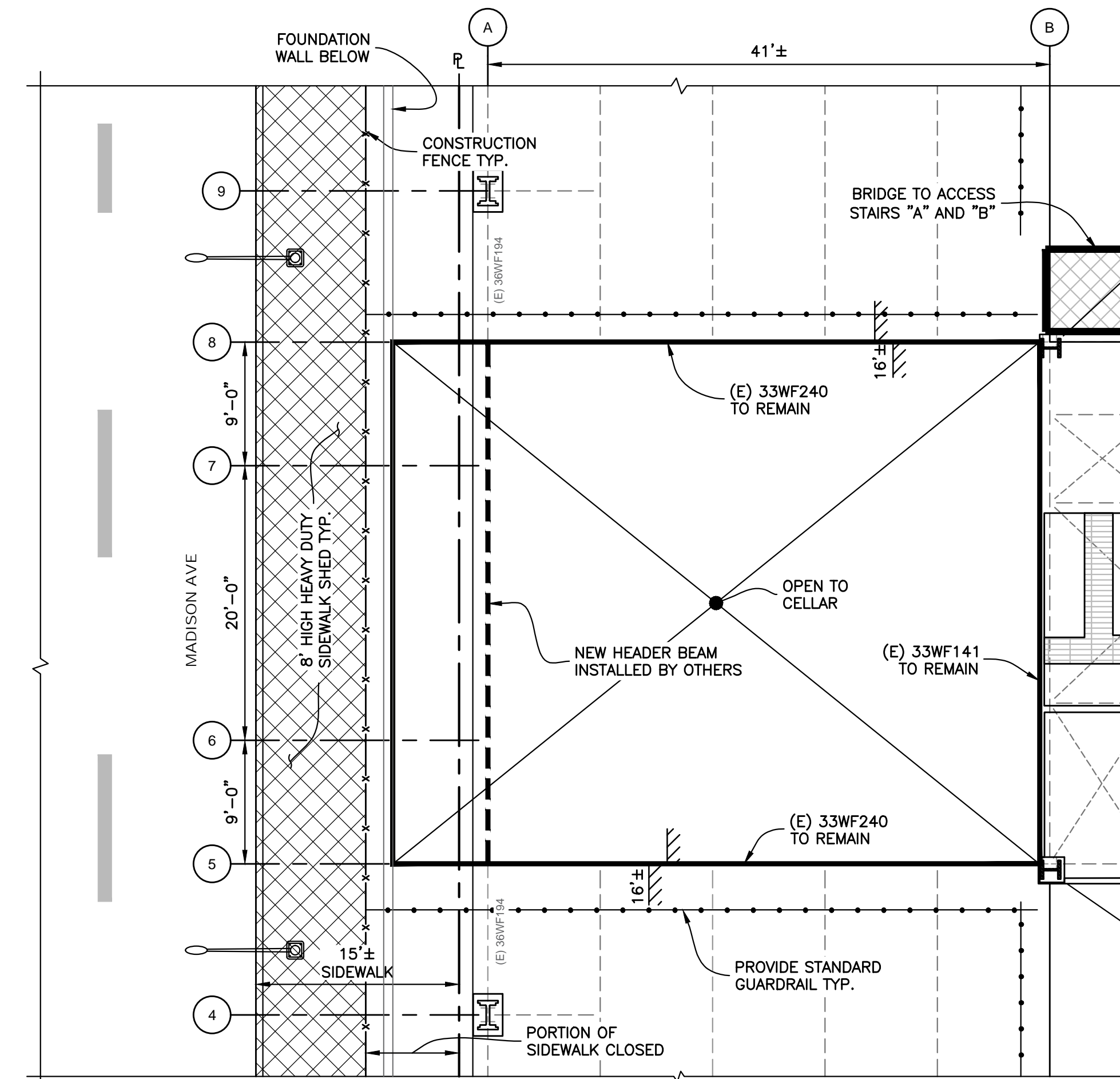
No.	DATE	DESCRIPTION	BY
266 MERRICK ROAD, SUITE 300, LYNBROOK, N.Y. 11563 TEL: (516) 791-2600 FAX: (516) 791-5425 <small>COPYRIGHT DESIGN NOT TO BE LENT, COPIED, OR REPRODUCED IN WHOLE OR IN PART WITHOUT WRITTEN CONSENT.          THIS OFFICE DISCLAIMS ANY RESPONSIBILITY FOR DRAWINGS OR OTHER DOCUMENTS RELATED TO THIS PROJECT UNLESS THEY BEAR THE SIGNATURE AND SEAL OF A PROFESSIONAL ENGINEER OF THIS OFFICE. THE NEW YORK STATE EDUCATION LAW PROHIBITS ANY ALTERATIONS TO, OR SELECTIONS FROM, THIS DRAWING EXCEPT AS MAY BE MADE BY A LICENSED PROFESSIONAL ENGINEER OR REGISTERED ARCHITECT WHO WILL BEAR THE RESPONSIBILITY FOR SUCH CHANGE.</small>			
<b>CLIENT</b> NORTHSTAR CONTRACTING GROUP, INC. 32 WILLIAMS PARKWAY, E. HANOVER, NJ 07936 PH: (973) 884-8682			
<b>PROJECT</b> SITE SAFETY PLAN FOR DEMOLITION OPERATIONS AT 270 PARK AVENUE, MANHATTAN, NY			
<b>ZONING INFORMATION</b> BLOCK: 1283 LOT: 21 ZONE: C5-3 ZONING MAP: 8D COMMUNITY BOARD: 105 BIN #: 1035421			
PLACE STICKER HERE		EXAMINER'S STAMP HERE	
<b>TITLE</b> FLOOR OPENING AT MADISON AVE DEMOLITION SEQUENCES 1 TO 3 PLAN VIEWS			
		DRAWING BY: SM DATE: 12/28/20 PROJECT NO: 18211.02.00 ENGINEER: JS SCALE: AS NOTED CHK BY: JS DWG NO:	
<b>APPROVED</b> <b>AMENDED PLAN</b> 01/06/2021 CSC SSP		SSP-250.00	
		134 OF 339	



**DEMOLITION SEQUENCE 4- PLAN**  
Scale: 1/8" = 1'-0"

**SEQUENCE 4:**

1. INSTALL SHORING TOWERS BETWEEN CELLAR TO GROUND FLOOR TO SUPPORT EXISTING STEEL BEAMS TO ALLOW CUTTING AND PICKING WITH TELEHANDLER.
2. CUT AND PICK 19'± LENGTH OF STEEL WEIGHING MAX 2100 LBS. REMOVE ALL ENCASUREMENT PRIOR TO PICKING STEEL.
3. REPEAT STEP 2 AS SHOWN IN DEMOLITION SEQUENCE 3 THEN REPEAT STEPS 1 AND 2 AS DESCRIBED ABOVE FOR EACH SUB-BAY, PRIOR TO MOVING ON TO THE NEXT SUB-BAY.



**SEQUENCE 5- PLAN**  
Scale: 1/8" = 1'-0"

**SEQUENCE 5:**

1. INSTALL STANDARD GUARDRAIL AROUND FLOOR OPENING.

LEGEND	
	EXTENT OF FLOOR OPENING
	SLAB TO BE DEMOLISHED
	8' HIGH HEAVY DUTY SIDEWALK SHED.
	DIRECTION OF SLAB DEMOLITION TYP.
	EXISTING STEEL BEAMS BELOW SLAB TYP.
	STEEL BEAMS TO BE REMOVED TYP.
	NEW STEEL BEAM TYP.
	STANDARD GUARDRAIL TYP.
	COLUMN TYP.
	COLUMN TO BE REMOVED TYP.

No.	DATE	DESCRIPTION	BY
<b>HOWARD I. SHAPIRO &amp; ASSOCIATES</b> CONSULTING ENGINEERS, P.C.			
266 MERRICK ROAD, SUITE 300, LYMBROOK, N.Y. 11563 TEL: (516) 791-2600 FAX: (516) 791-5425			
COPYRIGHT DESIGN NOT TO BE LENT, COPIED, OR REPRODUCED IN WHOLE OR IN PART WITHOUT PRIOR WRITTEN CONSENT.			
THIS OFFICE DISCLAIMS ANY RESPONSIBILITY FOR DRAWINGS OR OTHER DOCUMENTS RELATED TO THIS PROJECT UNLESS THEY BEAR THE SIGNATURE AND SEAL OF A PROFESSIONAL ENGINEER OF THIS OFFICE. THE NEW YORK STATE EDUCATION LAW PROHIBITS ANY ALTERATIONS TO, OR DELETIONS FROM, THIS DRAWING EXCEPT AS MAY BE MADE BY A LICENSED PROFESSIONAL ENGINEER OR REGISTERED ARCHITECT WHO WILL BEAR THE RESPONSIBILITY FOR SUCH CHANGE.			

CLIENT  
NORTHSTAR CONTRACTING GROUP, INC.  
32 WILLIAMS PARKWAY, E. HANOVER, NJ 07936  
PH: (973) 884-8682

PROJECT  
SITE SAFETY PLAN FOR  
DEMOLITION OPERATIONS AT  
270 PARK AVENUE, MANHATTAN, NY

ZONING INFORMATION  
BLOCK: 1283  
LOT: 21  
ZONE: C5-3  
ZONING MAP: 8D  
COMMUNITY BOARD: 105  
BIN #: 1035421

PLACE STICKER HERE

EXAMINER'S STAMP HERE

TITLE  
FLOOR OPENING AT MADISON AVE  
DEMOLITION SEQUENCES 4 & 5  
PLAN VIEWS

<p><b>APPROVED</b> AMENDED PLAN 01/06/2021 CSC SSP</p>	<p>DRAWING BY: SM DATE: 12/28/20</p> <p>PROJECT NO: 18211.02.00</p> <p>ENGINEER: JS</p> <p>SCALE: AS NOTED</p> <p>CHK BY: JS</p> <p>DWG NO: SSP-251.00</p>
--	--