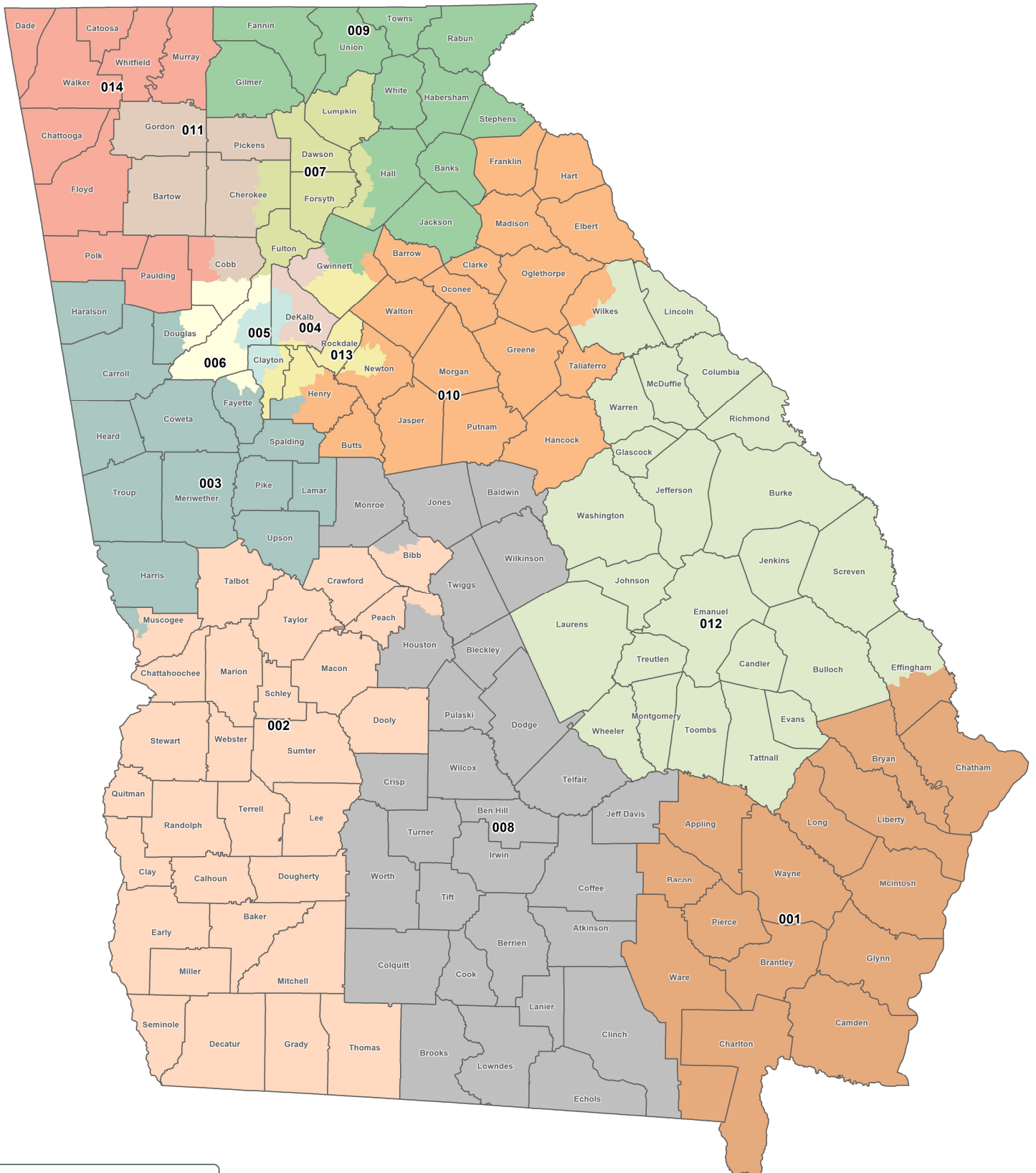



# Proposed Congressional Districts of Georgia

Client: S049  
Plan: Congress-2023  
Type: Congress



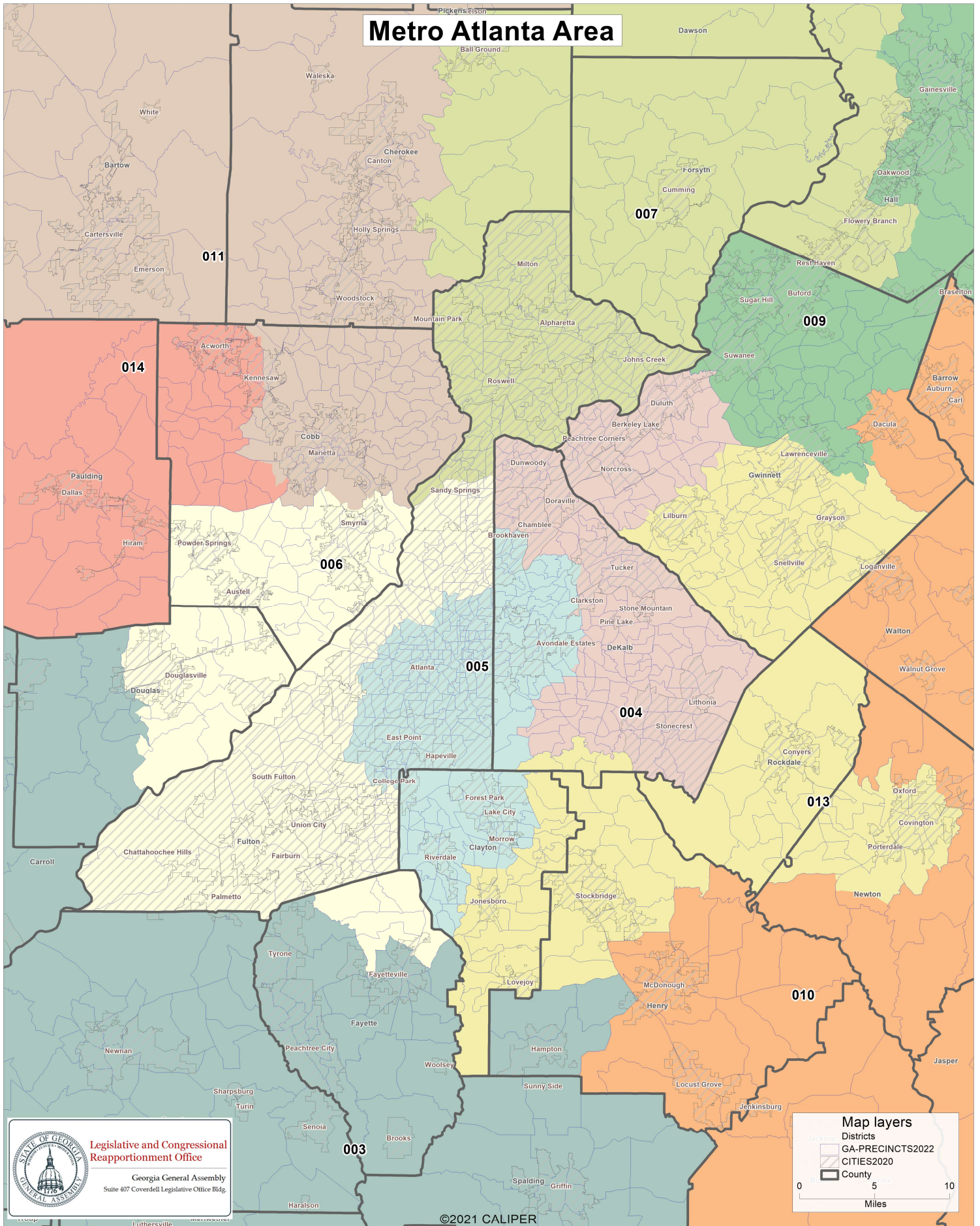
**Legislative and Congressional Reapportionment Office**  
Georgia General Assembly  
Suite 407 Coverdell Legislative Office Bldg.

©2021 CALIPER

**Map layers**  
Districts  
County  
0 20 40  
Miles

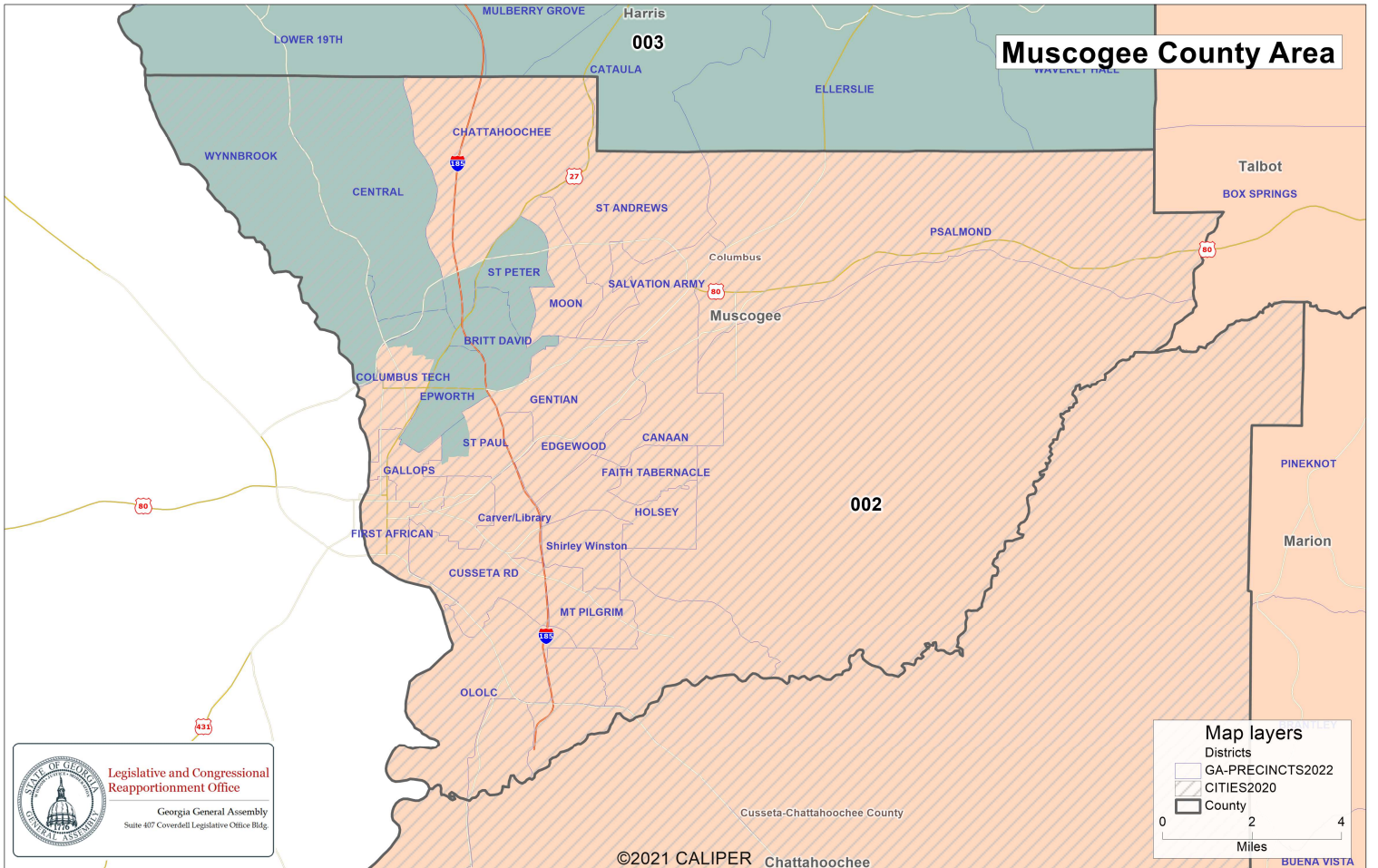
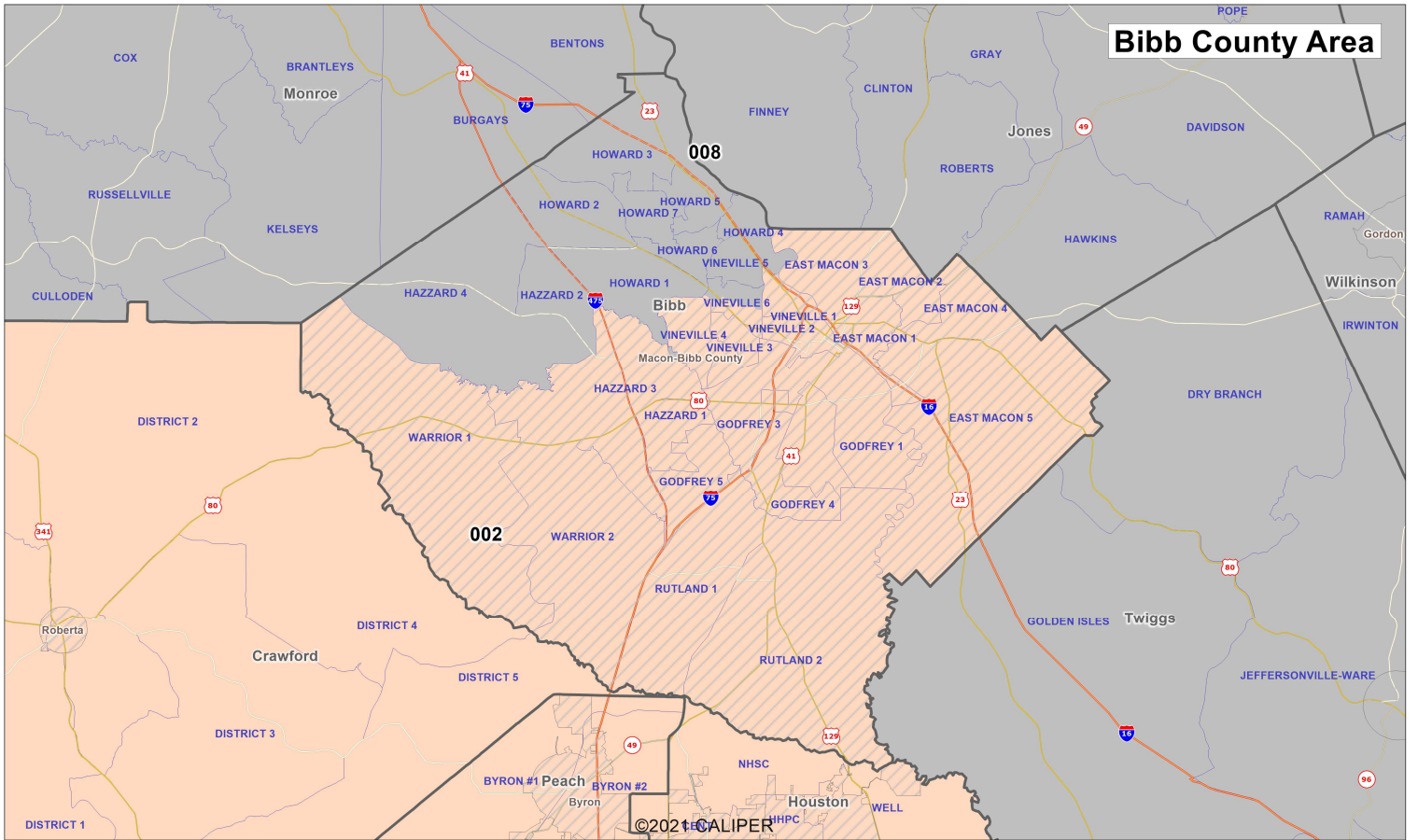
# Proposed Congressional Districts of Georgia

Client: S049  
Plan: Congress-2023  
Type: Congress



# Proposed Congressional Districts of Georgia

Client: S049  
Plan: Congress-2023  
Type: Congress



Legislative and Congressional Reapportionment Office  
Georgia General Assembly  
Suite 407 Coverdell Legislative Office Bldg.

**Map layers**

- Districts
- GA-PREINCTS2022
- CITIES2020
- County

0 2 4 Miles

## Population Summary

District	Population	Deviation	% Devn.	[18+_Pop]	[% 18+_Pop]	[% NH_Wht]	[% NH_Blk]	[% Hispanic Origin]	[% NH_Asn]	[% NH_Ind]	[% NH_Hwn]	[% NH_Oth]	[% NH_2+ Races]
001	765,137	1	0.00%	589,266	77.01%	57.59%	27.54%	7.75%	2.19%	0.24%	0.16%	0.44%	5.32%
002	765,137	1	0.00%	587,555	76.79%	39.94%	49.03%	5.95%	1.34%	0.21%	0.1%	0.34%	4.02%
003	765,136	0	0.00%	586,319	76.63%	64.37%	22.61%	6.31%	2.09%	0.21%	0.04%	0.47%	5.1%
004	765,137	1	0.00%	582,946	76.19%	19.71%	47.54%	19.25%	9.6%	0.16%	0.03%	0.64%	4.03%
005	765,137	1	0.00%	613,735	80.21%	31.02%	49.79%	9.89%	5.07%	0.17%	0.03%	0.55%	4.34%
006	765,136	0	0.00%	593,690	77.59%	29.78%	50.18%	12.34%	3.4%	0.17%	0.04%	0.68%	4.4%
007	765,137	1	0.00%	579,339	75.72%	63.72%	7.75%	10.24%	13.54%	0.17%	0.04%	0.58%	5.25%
008	765,136	0	0.00%	585,857	76.57%	57.91%	29.72%	7.17%	1.56%	0.19%	0.05%	0.31%	4.03%
009	765,135	-1	0.00%	582,752	76.16%	60.91%	11.91%	16.14%	6.75%	0.18%	0.04%	0.45%	4.76%
010	765,137	1	0.00%	590,322	77.15%	62.48%	23.32%	7.61%	2.25%	0.17%	0.03%	0.54%	4.67%
011	765,135	-1	0.00%	589,100	76.99%	66.68%	11.44%	12.15%	4.14%	0.19%	0.04%	0.8%	5.93%
012	765,136	0	0.00%	588,119	76.86%	52.13%	36.12%	5.63%	1.83%	0.21%	0.11%	0.36%	4.7%
013	765,136	0	0.00%	572,137	74.78%	24.58%	49.62%	14.48%	6.91%	0.18%	0.05%	0.7%	4.63%
014	765,136	0	0.00%	579,137	75.69%	69.99%	11.86%	11.94%	1.51%	0.21%	0.04%	0.44%	5.28%

**Total:** 10,711,908

**Ideal District:** 765,136

### Summary Statistics:

Population Range:	765,135 to 765,137
Ratio Range:	0.00
Absolute Range:	-1 to 1
Absolute Overall Range:	2
Relative Range:	0.00% to 0.00%
Relative Overall Range:	0.00%
Absolute Mean Deviation:	0.57
Relative Mean Deviation:	0.00%
Standard Deviation:	0.70

# Population Summary

District	Population	Deviation	% Devn.	[18+_Pop]	[% 18+_Pop]	[% NH18+_Wht]	[% NH18+_Blk]	[% H18+_Pop]	[% NH18+_Asn]	[% NH18+_Ind]	[% NH18+_Hwn]	[% NH18+_Oth]	[% NH18+_2+ Races]
001	765,137	1	0.00%	589,266	77.01%	60.41%	26.44%	6.78%	2.36%	0.26%	0.14%	0.37%	3.24%
002	765,137	1	0.00%	587,555	76.79%	42.73%	47.62%	5.12%	1.41%	0.23%	0.09%	0.28%	2.53%
003	765,136	0	0.00%	586,319	76.63%	66.83%	22%	5.33%	2.08%	0.22%	0.04%	0.38%	3.11%
004	765,137	1	0.00%	582,946	76.19%	21.75%	47.86%	17%	9.92%	0.15%	0.03%	0.57%	2.71%
005	765,137	1	0.00%	613,735	80.21%	33.65%	48.53%	8.59%	5.48%	0.17%	0.04%	0.5%	3.05%
006	765,136	0	0.00%	593,690	77.59%	32.8%	49.04%	10.64%	3.69%	0.18%	0.04%	0.62%	2.97%
007	765,137	1	0.00%	579,339	75.72%	66.77%	7.73%	9.05%	12.44%	0.15%	0.04%	0.52%	3.29%
008	765,136	0	0.00%	585,857	76.57%	60.52%	28.84%	6.1%	1.6%	0.2%	0.05%	0.25%	2.43%
009	765,135	-1	0.00%	582,752	76.16%	64.51%	11.43%	13.72%	6.82%	0.2%	0.04%	0.36%	2.93%
010	765,137	1	0.00%	590,322	77.15%	65.28%	22.38%	6.45%	2.28%	0.18%	0.03%	0.47%	2.93%
011	765,135	-1	0.00%	589,100	76.99%	69.37%	11.4%	10.44%	4.07%	0.2%	0.04%	0.72%	3.76%
012	765,136	0	0.00%	588,119	76.86%	54.65%	35.06%	4.87%	1.95%	0.22%	0.1%	0.3%	2.86%
013	765,136	0	0.00%	572,137	74.78%	27.83%	48.6%	12.66%	7.14%	0.19%	0.05%	0.63%	2.91%
014	765,136	0	0.00%	579,137	75.69%	73.12%	11.47%	10%	1.54%	0.22%	0.04%	0.36%	3.25%

**Total: 10,711,908**  
**Ideal District: 765,136**

### Summary Statistics:

Population Range:	765,135 to 765,137
Ratio Range:	0.00
Absolute Range:	-1 to 1
Absolute Overall Range:	2
Relative Range:	0.00% to 0.00%
Relative Overall Range:	0.00%
Absolute Mean Deviation:	0.57
Relative Mean Deviation:	0.00%
Standard Deviation:	0.70

## Population Summary

\*Census designation "AP" denotes respondents who are Any or Part of a race category; respondents may fall into more than one category.

District	Population	Deviation	% Devn.	[18+_Pop]	[% 18+_Pop]	[% 18+_AP_Wht]	[% 18+_AP_Blkl]	[% H18+_Pop]	[% 18+_AP_Ind]	[% 18+_AP_Asn]	[% 18+_AP_Hwn]	[% 18+_AP_Oth]	[% 18+_2+_Races]
001	765,137	1	0.00%	589,266	77.01%	66.62%	28.17%	6.78%	2%	2.99%	0.29%	5.46%	5.16%
002	765,137	1	0.00%	587,555	76.79%	46.83%	49.29%	5.12%	1.54%	1.89%	0.22%	4.39%	3.85%
003	765,136	0	0.00%	586,319	76.63%	72.38%	23.32%	5.33%	2.09%	2.55%	0.12%	4.8%	4.97%
004	765,137	1	0.00%	582,946	76.19%	29.33%	50.59%	17%	1.9%	10.64%	0.15%	15.14%	7.24%
005	765,137	1	0.00%	613,735	80.21%	39.57%	51.06%	8.59%	1.53%	6.33%	0.13%	7.42%	5.57%
006	765,136	0	0.00%	593,690	77.59%	39.56%	51.75%	10.64%	1.63%	4.31%	0.13%	9.52%	6.41%
007	765,137	1	0.00%	579,339	75.72%	75.03%	8.93%	9.05%	1.79%	13.23%	0.13%	8.51%	7.23%
008	765,136	0	0.00%	585,857	76.57%	65.6%	30.04%	6.1%	1.63%	2.03%	0.14%	4.83%	4%
009	765,135	-1	0.00%	582,752	76.16%	73.8%	12.65%	13.72%	2.31%	7.37%	0.12%	11.68%	7.58%
010	765,137	1	0.00%	590,322	77.15%	71.04%	23.69%	6.45%	1.93%	2.78%	0.12%	5.81%	5.08%
011	765,135	-1	0.00%	589,100	76.99%	78.35%	12.83%	10.44%	2.36%	4.75%	0.12%	9.55%	7.58%
012	765,136	0	0.00%	588,119	76.86%	59.51%	36.72%	4.87%	1.67%	2.55%	0.22%	4.01%	4.33%
013	765,136	0	0.00%	572,137	74.78%	34.82%	51.45%	12.66%	1.85%	7.74%	0.16%	11.35%	6.9%
014	765,136	0	0.00%	579,137	75.69%	80.9%	12.59%	10%	2.68%	1.95%	0.11%	8.43%	6.36%

**Total: 10,711,908**

**Ideal District: 765,136**

### Summary Statistics:

Population Range:	765,135 to 765,137
Ratio Range:	0.00
Absolute Range:	-1 to 1
Absolute Overall Range:	2
Relative Range:	0.00% to 0.00%
Relative Overall Range:	0.00%
Absolute Mean Deviation:	0.57
Relative Mean Deviation:	0.00%
Standard Deviation:	0.70