

ETHIOPIA

SEPTEMBER 2022

Subregion: East Africa
 Income Group: Low Income Country (World Bank Classification)
 IDEA Country Dashboard: <https://idea.usaid.gov/cd/ethiopia>

People

Population (millions) ¹	120.8	(2022)	205.4	(2050)
Urban ²	22.7%	(2022)	39.1%	(2050)
Rural ¹³	77.3%	(2022)	60.9%	(2050)
Age 0-14 ¹²	39.2%	(2022)	28.3%	(2050)
Age 15-64 ¹²	57.2%	(2022)	65.6%	(2050)
Age 65+ ¹²	3.6%	(2022)	6.1%	(2050)
Population growth (annual) ¹	2.4%	(2022)	1.4%	(2050)
Human Development Index ⁴	Ranked 173/189 (Low human development)			
Languages ³	Oromo (official working language in Oromiya) 33.8%, Amharic (official national language) 29.3%, Somali (official working language of Sumale) 6.2%, Tigrigna (Tigrinya) (official working language of Tigray) 5.9%, Sidamo 4%, Wolaytta 2.2%, Gurage 2%, Afar (official working language of Afar) 1.7%, Hadiyya 1.7%, Gamo 1.5%, Gedeo 1.3%, other 10.4%, English, Arabic			
Religions ³	Ethiopian Orthodox 43.8%, Muslim 31.3%, Protestant 22.8%, Catholic 0.7%, traditional 0.6%, other 0.8% (2016 est.)			
Ethnic Composition ³	Oromo 35.8%, Amhara 24.1%, Somali 7.2%, Tigray 5.7%, Sidama 4.1%, Guragie 2.6%, Welaita 2.3%, Afar 2.2%, Silte 1.3%, Kefficho 1.2%, other 13.5% (2022 est.)			

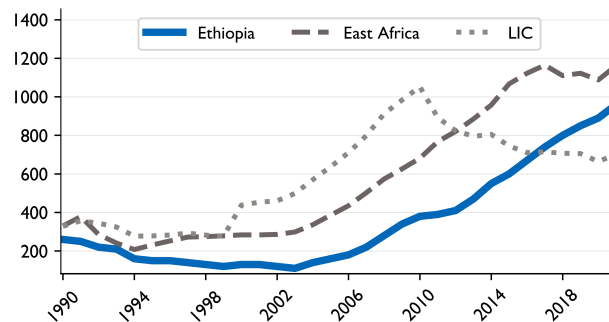
Government

Capital ³	Addis Ababa		
Government Type ³	federal parliamentary republic		
Head of State ³	President SAHLE-WORK Zewde (since 25 October 2018) (2018)		
Head of Government ³	Prime Minister ABIY Ahmed Ali (since April 2018, began a new five-year term on 4 October 2021)		
Legislature ³	bicameral Parliament consists of: House of Federation and House of People's Representatives		
Females in parliament (%) ⁵	42.6%	(2021)	
Corruption Perception Index ⁶	Ranked 87/180	(2021)	
Ibrahim Index ⁷	Ranked 31/54	(2019)	
Land area (sq km) ⁵	1,129,300	(1.5X the size of Texas)	

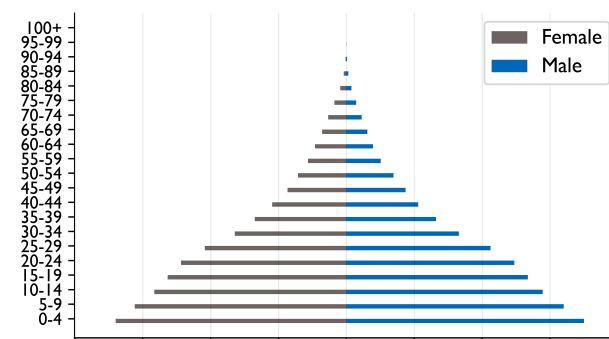
Official Development Assistance

From all donors (US\$, net) ⁵	5,301,660,156	(2020)
as % of income ⁵	5.0%	(2020)
per capita (US\$) ⁵	46.1	(2020)
From U.S. (US\$, net disbursements) ⁸	794,179,623	(2020)

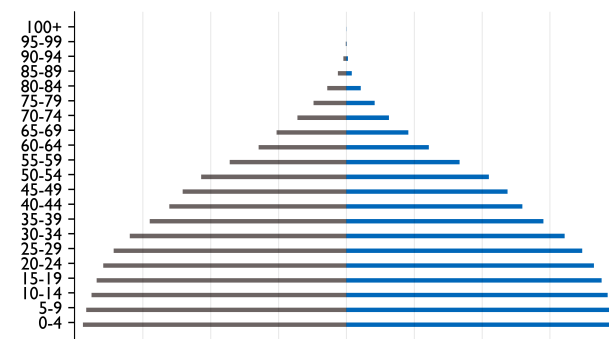
Income per capita, US\$



2022 Population

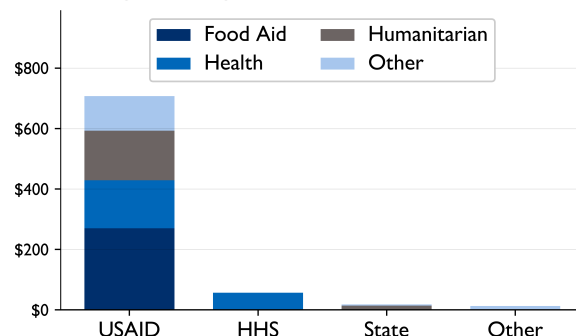


2050 Population



U.S. net disbursements by agency and sector, 2020 US\$ millions

Note: de-obligations or negative net disbursements are not shown on the chart



ETHIOPIA

SEPTEMBER 2022

Economy

GDP (US\$ millions) ⁵	111,271	(2021)
GDP growth (annual %) ⁵	5.6%	(2021)
10 year average ⁵	8.6%	(2021)
Merchandise exports (US\$ millions) ⁹	3,393	(2019)
Merchandise imports (US\$ millions) ⁹	22,148	(2019)
Percent of population living under \$1.90/day ⁵	30.8%	(2015)
Share of income held by the poorest 20% ⁵	7.3%	(2015)
Share of income held by the richest 20% ⁵	43.0%	(2015)
Youth unemployment (ages 15-24) ⁵	5.7%	(2021)
Annual inflation ¹⁰	25.2%	(2021)

Education

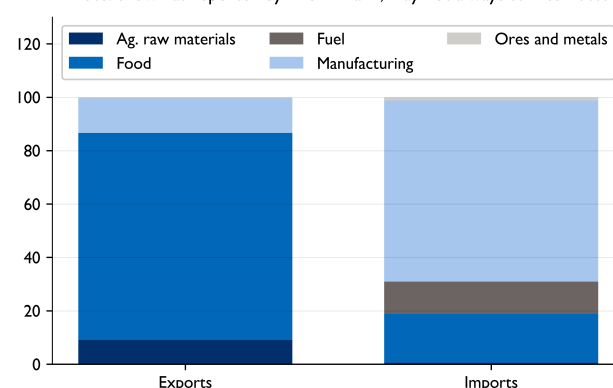
Completion rate, primary ⁵	68.1%	(2020)
Female ⁵	65.4%	(2020)
Male ⁵	70.7%	(2020)
Pupil-trained teacher ratio, primary ¹¹	68.5	(2009)
Pupil-trained teacher ratio, secondary ¹¹	72.1	(2008)
Public education expenditure (% of GDP) ¹¹	4.7%	(2015)
Literacy rate (ages 15-24) ⁵	72.8%	(2017)
Children out of school, primary ⁵	2,187,570	(2020)
Of which, female ⁵	65.1%	(2020)
Of which, male ⁵	34.9%	(2020)

Health

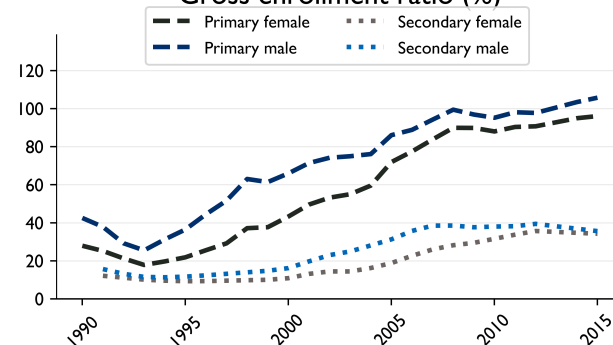
Prevalence of HIV (ages 15-49) ¹²	1.0%	(2018)
Antiretroviral coverage (% of adults 15+) ⁵	78.0%	(2020)
Incidence of TB (per 100,000 population) ¹³	132	(2020)
Deaths from malaria (total) ¹⁴	5,369	(2017)
Prevalence of stunting (% of children under 5) ¹⁵	36.8%	(2019)
DPT3 immunization rate (children aged one) ¹⁵	61.1%	(2019)
Fertility rate (children per woman) ¹⁵	4.1	(2019)
Modern contraceptive prevalence (%) ¹⁶	40.5%	(2019)
Maternal mortality ratio (per 100,000 live births) ¹⁷	401	(2017)
Births attended by a skilled health worker ¹⁵	49.8%	(2019)
At least basic water source (% of population) ¹⁸	49.6%	(2020)
Public health expenditure (% of GDP) ¹⁹	0.7%	(2019)

Shares of merchandise trade (%), 2020

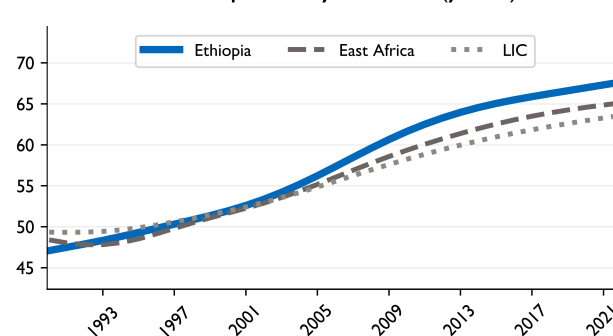
Note: shown as reported by World Bank, may not always sum to 100%



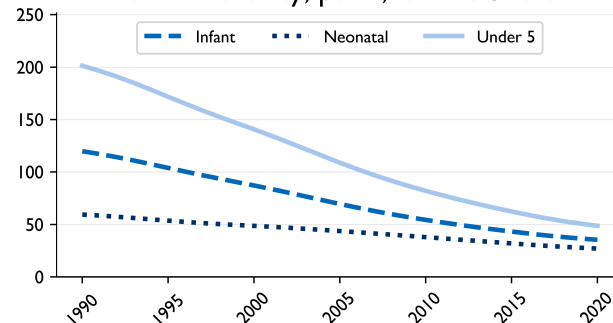
Gross enrollment ratio (%)



Life expectancy at birth (years)



Child mortality, per 1,000 live births



Sources: 1. United Nations, World Population Prospects; 2. United Nations, World Urbanization Prospects; 3. CIA, World Factbook; 4. United Nations Development Program (UNDP), Human Development Report; 5. World Bank, World Development Indicators (WDI); 6. Transparency International, Corruption Perceptions Index; 7. Mo Ibrahim Foundation, Index of African Governance; 8. OECD, Creditor Reporting System (CRS++); 9. IMF, Direction of Trade Statistics; 10. IMF, World Economic Outlook Database; 11. UNESCO, Institute for Statistics (UIS) Database; 12. UNAIDS, Epidemiological Estimates (EPI) Database; 13. World Health Organization (WHO), Global Tuberculosis Database; 14. World Health Organization (WHO), World Health Statistics; 15. Demographic Health Surveys; 16. UN Population Division, World Contraceptive Use; 17. World Health Organization (WHO), Maternal Mortality; 18. WHO/UNICEF, Joint Monitoring Programme (JMP) for Water Supply, Sanitation, and Hygiene; 19. World Health Organization (WHO), Global Health Expenditure Database; 20. UN Inter-agency Group for Child Mortality Estimation, Child Mortality Estimates 21. World Bank, Country and Lending Groups